

Welcome to the 1st Annual...

CANADIAN LEGACY!

Showcasing 50 Lots
of CANADIAN ANGUS
GENETICS

DECEMBER 13 2011

TUESDAY • 1:00 P.M.

OLDS COW PALACE • OLDS, ALBERTA

WELCOME TO THE CANADIAN LEGACY SALE



Shane Castle

CR
M
**Castlerock
Marketing**

Shane & Tammy Castle

Box 415, Swift Current
SK S9H 3V8

Cell: 306-741-7485

Ph: 306-784-2241

WEBSITE:

www.castlerockmarketing.com

THE 2011 CANADIAN LEGACY SALE! The first of its kind in Canada and we are very excited about the cattle selected for this inaugural event!

The consignors were more than willing to go that extra mile in opening their herds up for this sale! I was personally at every place to select the cattle from Nottawa, Ontario, to Monte Lake, British Columbia, and points in between. What we have gathered is an extremely awesome set of sound, functional cattle that boast some **CANADIAN BRED GENETICS!**

We are all proud of the cattle we are breeding and raising regardless of where we come from. I think Canada offers a great testing ground for genetics with it's trying winters, scorching dry summers, hurricane like winds ... you name it, our cattle go through it! With that, cattle are like the people wherever you live because we endure it along side, as well. So without discrediting genetics from any other part of the world, it is our intention to gather cattle that vary slightly in being "Canadian Bred" in their makeup thus offering an outcross pedigree.

This isn't a straight Canadian Sale but rather a celebration and sale of genetics that, for the most part bred for generations in Canada. It's been the thought of many, that as proud breeders, a sale that puts these type of cattle under one roof is long overdue.

Canadian bred cattle are set with the disadvantage of not being able to compete in the EPD department - the cattle stand proud in their quality as their own production merits. We have top quality herd bulls that offer an outcross advantage, flushes, embryos and semen that is rare and valuable, not to mention the excellent cows, bred heifers and heifer calves. The sale cattle offer their own "**Legacy**" from their respective herds.

Join us December 13th for "that Canadian Sale" and you will be impressed! If you have any questions regarding the sale offering, by all means give any of the consignors, sales staff or myself a call!

See you Sale Day!!

Shane Castle
Castlerock Marketing

CANADIAN LEGACY SALE CONSIGNORS

ANGUS ACRES.....Lot #s: 44, 45
Bill Armitage - Box 70, Kinsella, AB ToB 2No - Ph: 780-336-2445

ANGUS RIDGE.....Lot #43
Walter Brown - Box 632, Carlyle, SK SoC oRo - Ph: 306-453-6010

BAR CR ANGUS.....Lot #s: 8, 10
Linda Froelich/Doug Crozier & Family - Box 8 Perdue, SK SoK 3Co - Ph: 306-221-4088

BAR HEART ANGUS.....Lot #s: 2, 14, 29, 34 40
Georgina & Bill Smith/Kim Sailer - RR 4, Rimbey AB ToC 2Jo - Ph: 403-843-4133

BRAEMAR ANGUS.....Lot #s: 20, 31, 38, 41
Peter & Christine Boake - Box 143, Acme, AB ToM oAo - Ph: 403-546-2684

BRANDL CATTLE CO.....Lot #s: 11, 15, 16, 19, 22, 24, 29, 39
Byron & Gwen Brandl - Box 128, Jarvie, AB ToG 1Ho - Ph: 780-954-2599

BROYNX ANGUS.....Lot #25
Bryce Mawby - Box 1367, Unity, SK - Ph: 587-433-8600

FLEURY CATTLE CO.....Lot #s: 28, 35
Fleury, Matt - Box 177, Aberdeen, SK SoK oAo - Ph: 306-291-3960

FLICEK FARMS.....Lot #s: 13, 30
Rick & RubyFlicek - Box 42, Neilburg, SK SoM 2Co - Ph 306-823-4725

GLEN ISLAY FARMS.....Lot #s: 1, 27
Don & Jeanette Currie - 2234 Conc 11, RR1, Nottawa, ON LoM 1Po - Ph: 705-445-1526

LOOKOUT STOCK FARM INC.....Lot #3, 4, 32
Roy & Cindy Bjorklund - Box 2044, Fairview AB ToH 1Lo - Ph: 780-835-3530

MILLER WILSON ANGUS.....Lot #s: 5, 42
Lee & DawnWilson - Box 550, Bashaw, AB ToB oHo - Ph: 780-372-3529

RONAN R ANGUS FARM.....Lot #s: 12, 17, 18, 21
Ralph & Lorree Erdell - Box 961, Mayerthorpe, AB ToE 1No - Ph: 780-786-2961

SEALIN CREEK RANCH.....Lot #s: 26, 36
Dan & Jeanette Speller - Monte Lake, BC - Ph: 250-375-2268

SPRUCE VIEW RANCHES.....Lot #s: 9, 33, 37
Wayne G. Grant - Box 174, Killam, AB ToB 2Lo - Ph: 780-385-2216

SUNNY GROVE ANGUS.....Lot #7
Desmond & ChantelleRasmussen - Box 822 Radville, SK SoC 2Go - Ph: 306-869-2101

WILBAR FARMS.....Lot #6
Bryan & Tracey Willms - Box 132, Dundurn, SK SOK 1Ko - Ph: 306-492-2161

ZANIABAR ANGUS.....Lot #s: 46, 48
Bill Abbott - RR 1, Westeros, AB ToC 2Vo- Ph: 780-586-0770

Welcome to the...
CANADIAN

DECEMBER 13 2011

TUESDAY • 1:00 P.M.

LEGACY!

OLDS COW PALACE
OLDS • ALBERTA

– SALE DAY PHONES – Shane Castle (cell): 306-741-7485

Doug Henderson (cell): 403-350-8541 Mark Forsyth (cell): 306-784-7844

On Offer -

2 Herd Sire Prospects

1 Proven Herd Sire

5 Embryo Pkgs/Flushes

2 Proven Foundation Cows

15 Bred Heifers

16 Open Heifer Calves

7 Semen Pkgs

Cattle Viewing -

Cattle can be viewed at consignors' (please call to make arrangements) until December 11th at which time they will be transported to the Olds Cow Palace where they will be available for your inspection up until Sale Time - 1:00 p.m. on December 13th.

More info & catalogue, when available:

www.castlerockmarketing.com

Sale Staff -

Auctioneer:

Brent Carey - Carey Auction Services403-650-9028

Consultants:

Shane Castle - Castlerock Marketing306-741-7485

Mark Forsyth - Castlerock Marketing306-784-7844

Doug Henderson - DJH & Associates403-782-3888

Doug's Cell: 403-350-8541

Ring Staff:

Dennis Ericson.....780-352-7630

Dennis Cell: 780-361-9347

Mark Stock403-357-8104

Insurance Available Sale Day -

Camille Scott - Stockmens Insurance - Ph: 403-369-1791

Larry Toner - Stockmens Insurance - Ph: 306-932-4866

Accommodations -

- Olds Best Western - 1-888-908-5900
- Olds Ramada Inn & Suites - 1-866-971-7262
or 403-507-8349

Please Join Us -

Please join us early on Sale Day for pre-sale viewing and lunch starting at 11:30 a.m.



Sale Managed By -

CASTLEROCK MARKETING

Shane & Tammy Castle

Cell: 306-741-7485 Ph: 306-784-2241

Box 415, Swift Current, SK S9H 3V8

www.castlerockmarketing.com



Lot #1 - Glen Islay Trooper 32Y

CONSIGNED BY GLEN ISLAY FARMS - 705-445-1526

GLEN ISLAY TROOPER 32Y

Male JPC 32Y February 11 2011 #1604575
BW: 84 lbs.

SELLING TWO THIRDS (2/3) INTEREST & FULL POSSESSION.

We had no intentions of selling any part of Trooper until Shane showed up. The increasing interest in straight Canadian Angus genetics and the importance of this first "Legacy Sale" brought him here.

Since we started using the remaining semen from Bonnie Chance Bardolene 10A (born in 1969), we have raised many excellent sons that are out working, but this is the most promising one yet with a straight Canadian pedigree. There is no question that Bonnie Chance Bardolene 10A is one of the truly greatest breeding bulls considering the consistent power and production of all his sons and daughters.

Trooper's dam is a real power cow that never misses regardless of who she's bred to. Her good foot and depth of heel, ideal udder and flawless structure at ten years of age gives us complete confidence in Trooper.

Trooper, himself, is so well made with thickness, excellent testicles, superb structure and parentage - we really look forward to seeing his first calves and how they develop.

1

BARDOLENE LAD OF FAIRALTA 2U
BONNIE CHANCE BARDOLENE 10A (340640)
BONNIE CHANCE BLACKCLASS 22

BANDOLIERMERE G V 16P
BLUEBIRD BARDOLENE 81
BLACKMAN OF SOUTHAVEN 2
BONNIE CHANCE BLACKCAP 18

SPRUCE VIEW ESSOTERIC 31A
FOUR D BAR DOLL 299L (1073260)
OLE SASKALTA BAR DOLL 410D

JRM ESSOTERIC 26X
SPRUCE VIEW JESTRESS 29L
BARDOLENE OLE SASKALTA 118B
BAR DOLL OLE SASKALTA 142B

Proj '11 EPD's BW:+1.4 WW:+19 YW:+31 Milk:+4 TM:+24

Paternal Sister to Lot #1



Glen Islay Pride 12N

Paternal Great-Grandsire to Lot #1



Blackman of Southhaven



Lot #2 - Bar Heart Lad 191Y

CONSIGNED BY BAR HEART ANGUS - 403-843-4133

BAR HEART LAD 191Y

Male IKZ 191Y January 05 2011 #1607270
BW: 93 lbs. Adj. 205D: 621 lbs.

2

BLIND CREEK LAD 25H
LINWOOD LAD 37W (1524176)
LINWOOD ELBA 19S

BRESEE ACRES WINNIES LAD 4
BAR HEART LADY HEATHER 291S (1304530)
HAMBLIN LADY HEATHER 291P

BON VIEW WINTON 1342
ENCHANTRESS ERICA G S F 13D
STEVENSON BRUNO 561G CAF NHF
LINWOOD ELBA 3M
BRESEE ACRES ROSES LAD
WINNIE OF REO 10
DA ES RO TWISTER 0627
POPLAR MDWS LADY HEATHER 10G

SELLING TWO THIRDS (2/3) INTEREST & FULL POSSESSION.

Lad 191Y was an easy find for me this summer when touring the Bar Heart herd and when I saw his dam I was sold... and then when I learned of the pedigree I was really pumped! Lad 191Y shows a great herd bull look with natural character, structure and muscle. He presents a neat opportunity to attain some genetics that are unique to most breeders but most importantly he carries the qualities needed to be a herdbull.

His maternal sister by the Barin bull that Spruce View Angus purchased out of the "Masterpiece" Sale is also offered in this sale, she is selling as Lot #23. She and 191Y are backed by a tremendous cow family that originated with the Lady Heather cow family from Poplar Meadows in British Columbia.

Proj '11 EPD's BW:+1.4 WW:+19 YW:+31 Milk:+4 TM:+24

Maternal Grandsire to Lot #2



"Duke" - a 2475 pound Earl Marshall bull

Paternal Grandsire to Lot #2



Blind Creek Lad 25H

CANADIAN LEGACY PROVEN HERDSIRE



The Canuck daughters averaged \$3667 at the recent Lookout Dispersal

CONSIGNED BY LOOKOUT STOCK FARM - 780-835-3530

Lot #4 - Lookout Canuck 26U

LOOKOUT CANUCK 26U

Male LSF 26U February 03 2008 #1457386

BW: 85 lbs. Adj. 205D: 685 lbs. Adj. 365D: 1070 lbs.

'11 Fall EPD's **BW:+2.0 WW:+31 YW:+47 Milk:+11 TM:+27**

ADELPHI TOM BOY 20H
FIGURE 8 ANGUS TOM BOY 509R (1252270)
 FIGURE 8 ANGUS LADY 604J

ANGUS ACRES TOM BOY 64D
 ADELPHI BURGESS J 39X
 FIGURE 8 ANGUS BIG DEAL
 FIGURE 8 ANGUS LADY 604G
 PARAMONT AMBUSH 2172 AMF CAF NHF
 WILLABAR COUNTESS 90A
 PEGLEEBOB JIMBO 43P
 WILLABAR COUNTESS 168K

WILLABAR AMBUSH 45G
LOOKOUT COUNTESS 283M (1110181)
 WILLABAR COUNTESS 98Y

We are excited to be a part of this new venture that Shane has put together. He started talking in February about Canuck being a highlight for the Canadian Legacy Sale since we were dispersing our bred females.

Canuck 26U, a powerful, proud Angus bull, was our choice to take the place of Tom Boy 509R. We have used him with our partner, Jerry Jonson, for the last three breeding seasons. He's done a great job - some of the top bull calves in the pen this year are sons of Canuck and his daughters selling in our bred female dispersal are truly exceptional. Lookout Canuck 26U offers a unique pedigree and and great potential for his new owner.

CANADIAN LEGACY EMBRYOS FROM DAM OF 26U



Lookout Countess 283M - Donor or Lot #4 Embryos

EMBRYOS CONSIGNED BY LOOKOUT STOCK FARM - 780-835-3530

LOOKOUT COUNTESS 283M

Female LSF 283M March 20 2002 #1110181

BW: 77 lbs. Adj. 205D: 528 lbs.

PARAMONT AMBUSH 2172 AMF CAF NHF
WILLABAR AMBUSH 45G (899169)
 WILLABAR COUNTESS 90A

BANDOLIER ESTON DURNESS 42B
 EWS MISS BURGESS 1720
 WILLABAR JIMBO 70Y
 WILLABAR COUNTESS 13X

PEGLEEBOB JIMBO 43P
WILLABAR COUNTESS 98Y (675426)
 WILLABAR COUNTESS 168K

DOUBLE FOUR ADVENTURE 171M
 COUNTESS OF PLB 23M
 BLACK BROWE BEST MAN 35
 WILLABAR COUNTESS 61G

'11 Fall EPD's **BW:+2.5 WW:+23 YW:+37 Milk:+8 TM:+20**

Guarantee for Embryo Lots #4 & Lots #7 - #10

- Guarantee one pregnancy if implanted by a certified technician
- Embryos are exportable • Embryos FOB at place of storage

1 Pkg of 3 Frozen Embryos

Lookout Countess 283 X Coalbridge Marshall 15

This spring we took two of our best cows and flushed them to Coalbridge Marshall. The offering of these matings will play a huge part in our operation going forward.

Since we are selling Canuck 26U in this sale we wanted to offer these embryos from his mother to showcase the breeding potential from this great cow.

In studying genetics and past sales catalogues, the Coalbridge Marshall cattle always intrigued me with the overall look of quality. "Top notch cows" is the word we were told when we quizzed what they would turn out like.



Coalbridge Marshall 15

SIRE OF LOT #4 EMBRYOS

COALBRIDGE MARSHALL 15

Male GKI 15Z April 11 1968 #327280

BW: n/a

MARSHALL OF SOUTHOLM 54U
SOUTHOLM MARSHALL 57W (287821)
 FLORA OF SOUTHOLM 53U

F V MARSHALL A 11
 KARAMA OF ALJON 27S
 SOUTHOME EILEENMERE 16S
 FLORA OF ALJON 25S

EILEENMERE OLD HERMITAGE 106
MAGIC OF DUSTY LANE 7T (241464)
 MISS MAGIC OF DUSTY LANE

EILEENMERE 1514
 MISSIE OF HEATHERBROOK 30G
 BLACK BARRY OF DUSTY LANE 2
 SUNWAIL BLACK MAGIC 3

'11 Fall EPD's **BW:+1.1 WW:+2 YW:+3 Milk:-5 TM:-4**

CANADIAN LEGACY EMBRYO FLUSHES



DMM Miss Essence 90K - Donor Dam for Lot #5 Flush

FLUSH CONSIGNED BY MILLER WILSON ANGUS - PH: 780 372 3529

DMM MISS ESSENCE 90K

Female (ET) DMM 90K February 16 2000 #1073582
BW: 90 lbs.

ANGUS ACRES BANDOLIER 75T
 ANGUS ACRES BANDY 96X (667274)
 ANGUS ACRES LADY 90R

ANGUS ACRES BANDOLIER 53P
 ANGUS ACRES GOLDY 75P
 ANGUS ACRES TEXAS TEA 19M
 ANGUS ACRES LADY 68M
 PERRYVILLE ESSO EXTRA 17M
 DMM LADY JANE 58L
 WANDERING CRK DYNASTY JRM 2F
 LASS H R OF CLOVERDENE 23D

DMM ESSOTERIC 67R
 JRM MISS ESSENCE 8U (626642)
 JRM DYNA LASS 44N

'11 Fall EPD's **BW:+7.7 WW:+36 YW:+53 Milk:+16 TM:+34**

Selling One (1) Flush to the Bull of the Buyers Choice

- Bid price is per embryo.
- Terms are for one flush of eight (8) embryos. Additional embryos over 8 will be at the option of the buyer and sold at the bid price per embryo.

DMM Miss Essence 90K, a powerful, proven donor whose had a huge influence on the Miller Wilson herd is all of the things that made Canadian cattle great - super feet, big bodied, excellent structure, big bone and lots of hair, and she really pushes the scale down.

We could write volumes about this cow but we'll just touch on a few highlights;

- Her daughter, **DMM Miss Essence 21R**, was Canadian Show Female Of The Year in 2009. 21R was Supreme Champion Female at both Farmfair International and Canadian Western Agribition among many other championships.
- 90K's son, **DMM Posi-Traction 57P**, has had a tremendous influence in our herd as well siring donors, herdsires and top show cattle. His impact has been large.
- Another son, **DMM Shift 78S** was Canadian Show Bull Of The Year in '08. He is leaving some tremendous progeny here and in Australia.



Some Progeny of the Lot #5 Donor Dam - Miss Essence 90K

(top left) Miss Essence 21R
 (top right) Posi-Traction 57P
 (bottom left) Shift 78S



Wilbar Jennifer 542L - Donor Dam for Lot #6 Flush

FLUSH CONSIGNED BY WILBAR FARMS - 306-492-2161

WILBAR JENNIFER 542L

Female BW 542L February 24 2001 #1047379

BW: 86 lbs. Adj. 205D: 569 lbs. Adj. 365D: 865 lbs.

RONAN TEX 10X
 GLENNIE TEX 7J (978345)
 GLENNIE LADY ANN 28D

ANGUS ACRES TEX 16S
 RONAN MATILDA 30R
 BANNER CONCORD 34X
 GLENNIE'S LADY ANN 9S

BATSCHOL STEMWINDER 31D
 RON'S JENNIFER 74H (949746)
 BATSCHOL JENNIFER 14Z

WIWA CREEK OVERDRIVE 80A
 BATSCHOL LADY 26B
 BATSCHOL SUPER BAT 8X
 BATSCHOL JENNIFER 52R

'11 Fall EPD's **BW:+5.1 WW:+27 YW:+45 Milk:+20 TM:+34**

Terms of Flush

- 1/2 down sale day and balance due upon completion of successful flush.
- Flush to be completed after cow calves at Bow Valley Genetics, Bassano AB
- Guarantee of six (6) exportable embryo's with all expenses for the flush and shipping to go to the buyer.
- Buyer has the option to use any exclusive sire in the Wilbar program or a sire of your choice.

A few stats on Lot #6 Donor Dam, Wilbar Jennifer 542L:

- Weaning Index of 112 on 8 calves
- Daughter working at Lewis Farms in Alberta
- 3 daughters retained in Wilbar herd
- 2 maternal sisters working in herd
- Model Angus cow - deep, wide based with perfect udder
- Daughter was 2006 Senior Champion cow at Agribition
- Have sold embryos out of 542L and daughter to Mark & Charlotte Stevens, New Zealand



Wilbar Jennifer 918N - Daughter of Lot #6 Donor Dam, 542L



Silver Dome Bride 431M - Donor Dam for Lot #7 Embryos

EMBRYOS CONSIGNED BY SUNNY GROVE ANGUS - PH 306-869-2101

SILVER DOME BRIDE 431M

Female SDF 431M February 03 2002 #1095393
BW: 81 lbs. Adj. 205D: 604 lbs.

CAMILLA CHANCE 37T
CAMILLA CHANCE 14W (275539)
 CAMILLA PAULA

SPRUCE VIEW LANCER 4B
SILVER DOME BRIDE 131F (863296)
 SILVER DOME BRIDE LICORICE 31X

BONNIE CHANCE BLACKMAN 32
 CAMILLA ANNE
 BELLE VALLEY DONALD 2
 KALUSZ BELLE 3

ANGUS ACRES LANCER 60U
 SPRUCE VIEW GEORGINA 4W
 CUDLOBE STEMWINDER 13N
 GLENMERE BRIDE 31U

'11 Fall EPD's

BW:-0.3 WW:+2 YW:+16 Milk:+4 TM:+5

1 Pkg of 3 Frozen Embryos
Silver Dome Bride 431M X Angus Acres Bandy 96X

• GUARANTEE ON PAGE 4

We purchased the 431M cow out of the "All Canadian" Sale a number of years ago and what a producer she has turned out to be. Carrying a unique pedigree with being a direct daughter of Camilla Chance 14W brings uniqueness let alone being a granddaughter of one of the most famous and influential Canadian Bulls of all time!

A 431M daughter by Canadian Concord was purchased by Richard Sverdah of Delia, AB. Belmoral Farms, Don and Daryl Bell, are also running a herd-bull out of 431M that looked great this summer!

The mating of Bandy 96X is certainly an interesting one. Miller Wilson have a flush selling in Lot #5 out of a Bandy 96X cow as an example. He makes really nice females with some power, and crossing that up with 431M could be the mating in creating your next herd bull as well. If people are still using a bull twenty three years after he was born he must be doing the right thing!

Desmond doesn't flush a lot of cows but if you have the chance to see this cow and analyze her production - namely her bull calf that was on her this summer - you will have to take notice.

SIRE OF LOT #7 EMBYOS

ANGUS ACRES BANDY 96X

Male FTB 96X March 9 1988 #667274

ANGUS ACRES BANDOLIER 53P
ANGUS ACRES BANDOLIER 75T (611568)
 ANGUS ACRES GOLDY 75P

ANGUS ACRES TEXAS TEA 19M
ANGUS ACRES LADY 90R (590739)
 ANGUS ACRES LADY 68M

ANGUS ACRES BANDOLIER 78K
 LUCY OF BLACK BONANZA 3H
 ANGUS ACRES DYNASTY 72J
 BLACK BONANZA GOLDY 62H

WACO ESQUIRE 20776
 ANGUS ACRES ROYAL VELVET 9J
 TORRO NEGRO TRADITION 55H
 LADY OF ANGUS ACRES 44F

'11 Fall EPD's

BW:+7.3 WW:+35 YW:+60 Milk:+19 TM:+37



FCR Jennifer 45L - Donor Dam for Lot #8 Embryos

CONSIGNED BY BAR CR ANGUS - PH 306 221 4088

FCR JENNIFER 45L

Female (ET) FCR 45L March 21 2001 #1090290
BW: 89 lbs.

DWAJO CHIEF 92E
CRESCENT CREEK CHIEF 22G (880862)
 CRESCENT CREEK HEROINE 8D

EVERBLACK ESSOTERIC 6A
BATSCHOL KEEPSAKE 37C (761446)
 BATSCHOL JENNIFER 20X

GDAR SVF CHIEF
 WICKLOW MISS LUCY 3C
 RITO 8094 PRAIRIELANE 2060 AMF
 CRESCENT CREEK HEROINE 2Z

DMM ESSOTERIC 67R
 EVERBLACK BARBARA MCH 55N
 R T MR ANGUS JR
 BATSCHOL JENNIFER 52R

'11 Fall EPD's

BW:+4.6 WW:+36 YW:+53 Milk:+14 TM:+32

1 Pkg of 3 Frozen Embryos
FCR Jennifer 45L X Crescent Creek Tom Boy 15W

The Jennifer cow family has long anchored the herd for Bar CR with being productive and producing top selling progeny. Diamond B purchased a full sister to 45L that was responsible for a cow family that averaged over \$5000.

45L is a real example of great production and, as a 10 year old, she really impressed me with her soundness and makeup when Linda was showing me the cows. Truly a cow that is the heart of the program thus making her a donor cow.

Every 45L heifer calf Linda has retained. The 45L bull calves were top sellers at bull sales throughout the years, as well.

What better to flush her to then the \$26,000 herdsire they purchased from Crescent Creek in the spring of 2010. Tommy Boy has matured into an excellent bull that is easy doing, thick and has left an awesome set of calves. I tried prying a couple heifer calves out of Linda but to no avail.



Sire of the Lot #8 Embryos - Crescent Creek Tom Boy 15W



Lot #9 - Spruce View Blackcap 97T

CONSIGNED BY SPRUCE VIEW RANCHES - 780-385-2216

SPRUCE VIEW BLACKCAP 97T

Female WGO 97T February 14 2007 #1378911
BW: 65 lbs.

BCC SUPERBULL 19M
 SPRUCE VIEW OVERDRIVE 63R (1262513)
 SPRUCE VIEW FANNY 40H

BCC EILEENMERE LAD 23H
 SPRUCE VIEW BLACKCAP 25M (1127841)
 SPRUCE VIEW BLACKCAP 15E

LAMBS OVERDRIVE 45E
 BCC BLACK VELVET 11H
 ANGUS ACRES JYM DANDY 93D
 SPRUCE VIEW FANNY 5U
 BJ JACK DANIELS 25'92
 BJ LADY WREN 13'90
 ANGUS ACRES LANCER 60U
 SPRUCE VIEW BLACKCAP 43Y

'11 Fall EPD's

n/a

Exposed: May 7 - July 16 to Geis Kodiak 42'07

When I spotted this beauty from across the pasture walking up with her whopper of a bull calf my mind was made up, this is the cow I wanted from Wayne and Dallas. I cannot print the word that Dallas used when Wayne informed him that I had selected her for the sale, but I will give you a hint.... it wasn't "Yahoo"! Lucky I didn't ask for her bred heifer - she's pretty darn good, too!

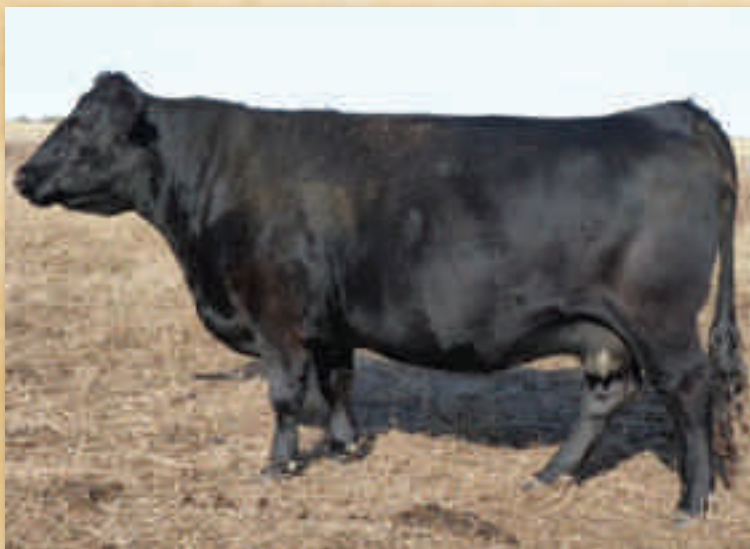
97T is a medium framed cow that has a very good udder, foot and a great attitude. Her pedigree that speaks volumes in maternal goodness with the Overdrive blood making tremendous cattle that are sound and flesh easy as well as the stalwart Jack Daniels bull at Brandl Cattle Co.

Her service to the Geis Kodiak 42'07 could really knock one out of the park! Not only is Kodiak 42'07 a son of the \$150,000 Kodiak 5R bull but his dam comes from Brian and Kim's excellent Georgina cow family. The granddam to Kodiak 42'07 is also the dam of Geis Max 26'95 that served Geis's for so long. This bull reads like the "Who's Who" when you are talking about some of the very best cattle around!

A great cow from a great program and great people - sounds pretty good to me!



HF Kodiak 5R - Sire of Kodiak 42'07 (Service Sire to Lot #9)



Lot #10 - FCR Jennifer 10P

CONSIGNED BY BAR CR ANGUS - PH 306 221 4088

FCR JENNIFER 10P

Female FCR 10P January 19 2004 #1231814
BW: 88 lbs.

DMM DYNASTY 03G
 FCR COVENANT 08M (1121790)
 DOUBLE AA ANNIE K 66'00

CRESCENT CREEK CHIEF 22G
 FCR JENNIFER 45L (1090290)
 BATSCHOL KEEPSAKE 37C

WANDERING CRK DYNASTY JRM 2F
 DMM MISS ESSENCE 22B
 DOUBLE AA BARDOLIER 13'98
 DOUBLE AA ANNIE K 87'97
 DWAJO CHIEF 92E
 CRESCENT CREEK HEROINE 8D
 EVERBLACK ESSOTERIC 6A
 BATSCHOL JENNIFER 20X

'11 Fall EPD's

BW:+3.3 WW:+37 YW:+54 Milk:+13 TM:+32

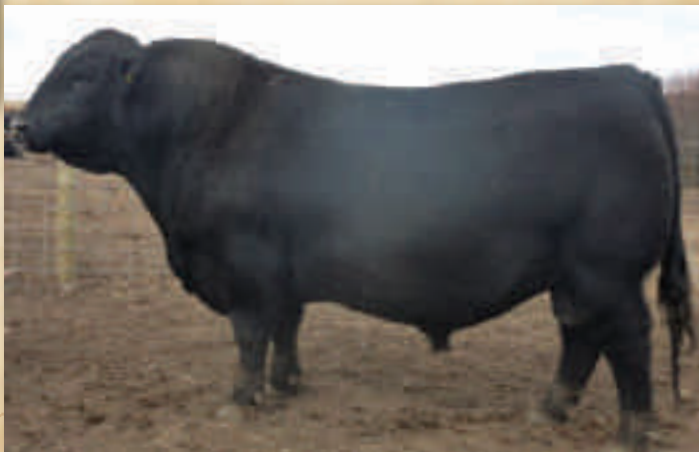
Exposed: May 1 - July 15 to Crescent Creek Tom Boy 15W

10P, a daughter of the highly prolific Jennifer 45L is just like her mother. The Jennifer cows are very sound, smooth, well made cows with great udders and overall phenotype.

Saskatoon Fall Fair was where Jennifer 10P was named Heifer Calf Champion to go with a strong showing at Agribition. She stems from the same cow family that produced our Messenger bull which shows great promise and has recently returned home to serve her sire duties this spring.

10P offers a real neat combination of Dynasty, Annie K and this tremendous cow line that originates from the Batschol herd.

10P is carrying service to the \$26,000 Tom Boy bull from Crescent Creek and they are terrific, stop by and see! Everything lines up with this mating with tremendous cow power and Tom Boy should make for an exciting service.



Steller - Maternal Brother to Lot #10



CONSIGNED BY BRANDL CATTLE CO. - 780-954-2599

Lot #11 - BCC Lady Wren 90X

BCC LADY WREN 90X

Female (ET) BCC 90X February 11 2010 #1594075

BW: 87 lbs. Adj. 205D: 658 lbs. Adj. 365D: 875 lbs.

Proj EPD's

BW:+4.9 WW:+33 YW:+56 Milk:+13 TM:+30

Exposed: April 23 – June 5 to Justamere 422 Eric 728W

Ultra Sound Dated: to April 30 breeding.

Not only is this an own daughter of the great Tomil Gnemern GR 137N exported to Uruguay, she is also a maternal sister to BCC Eileenmere Lad 17F purchased by Willie Robertson of England. 17F became the #1 sire in the UK for muscle and performance. Another maternal brother was BCC Eileenmere Lad 215 who was the 1996 Calgary Bull Sale Calf Champion selling to Tom Spady.

Lady Wren 9'91 was the 1991 Farmfair Heifer Calf Champion, while her dam 81'85 was the 1987 Farmfair Reserve Grand Champion Female.

TOMIL LAD GR 118K
TOMIL GNEMERN GR 137N (552300)
TOMIL BELLE GR 22H

BLUEBIRD LAD OF GMH 17E
DUCHESS GR 102G
BON VIEW WINTON 1342
GNEMERN BARBARA A
S C R LONE STAR 411
VONIE EUGENIE 2M
PINE DRIVE BIG SKY AMF CAF NHF
ANNSDALE LADY WREN 8E

CUDLOBE BLACK STAR 92X
BJ LADY WREN 9'91 (724202)
BJ LADY WREN 81'85



CONSIGNED BY RONAN R ANGUS FARM - 780-786-2961

Lot #12 - Ronan R Matilda 3X

RONAN R MATILDA 3X

Female KBB 3X January 17 2010 #1566501

BW: 88 lbs.

'11 Fall EPD's

n/a

Exposed: May 2 - June 14 to Ronan Bang Eston 101X

We opened the bred heifer pen up and brought every heifer in for Shane to select from for this sale. This Bandolier 78K granddaughter is one we are real proud of, not only for her pedigree but most importantly, her quality.

3X is a moderate framed heifer that is correct and fancy from one of the very long standing cow families that we have and they don't stick around if they don't work. Two maternal sisters have been retained including a full sister and Andy Becker purchased a maternal brother a few years back.

ANGUS ACRES BANDOLIER 78K
RONAN R BARDOLIER 606S (1369173)
RONAN R OAKLEAF 13J

ANGUS ACRES BANDOLIER 19H
ROYAL VELVET ANGUS ACRES 125G
BLACKTOF RANCHER 71G
RONAN OAKLEAF 21G

RONAN JIMBO 47E
BRIMAR MATILDA 50M (1092477)
RONAN MATILDA 125D

ADELPHI JIMBO 52A
EDICTA 6R
RONAN ALBERTAN 92A
RONAN MATILDA 48A

CANADIAN LEGACY BEAUTIFUL BRED HEIFERS



CONSIGNED BY FLICEK FARMS - PH 306-823-4725

Lot #13 - RNRF Grace 092X

RNRF GRACE 092X

Female RNRF 092X March 11 2010 #1568713

BW: 88 lbs.

'11 Fall EPD's

n/a

Exposed: April 27 - July 31 - Angus Acres Eric

This powerhouse heifer will give you power, bone and substance. Bond has served the Flicecks very well over the years including this past fall when they averaged over \$3000 at the "August Event" Sale. The Annie K cow family in there twice and the 47'06 bull that has left a real powerful set of calves including 3 bull calves that will be shown this fall and they are chock full of red meat!!!!

092X carries service to the newest addition to the bull battery from Angus Acres, Eric is his name and what an impressive individual he is. He is also the sire to their heifer calf in Lot #30 that is sexy.

13

LANGCO BOND 26R
RNRF UNLIMITED BOND 227U (1468808)
DOUBLE AA ANNIE K 602'03

DOUBLE AA BARDOLIER 47'06
DOUBLE AA ANNIE K 93'08 (1464962)
DOUBLE AA ANNIE K 369'06

ELLIOTT BOND 56N
LANGCO BARONESS 26K
DOUBLE AA RITO 206'97
DOUBLE AA ANNIE K 267'97
DOUBLE AA BARDOLIER 322'03
DOUBLE AA ANNIE K 289'02
SASKALTA WINSTON 12P
DOUBLE AA ANNIE K 74'99



CONSIGNED BY BAR HEART ANGUS - PH: 403-843-4133

Lot #14 - Bar Heart Matilda 69X

BAR HEART MATILDA 69X

Female KSX 69X January 03 2010 #1548291

BW: 79 lbs. Adj. 205D: 503 lbs. Adj. 365D: 672 lbs.

'11 Fall EPD's

BW:+1.3 WW:+9 YW:+22 Milk:+2 TM:+7

A.I.'ed: SAF Connection 0097 on March 29 2011
Exposed: Linwood Lad 37W - April 10 - June 2

69X is sired by the \$7500 Bar Heart Barin bull we sold in 2009 "Masterpiece" to Spruce View Angus and what an excellent set of calves he has left.

With Breesee Acres Winnies Lad 4 as this heifer's grandsire you will not only like the pedigree, but then add in the Masterplan on the bottom side and this heifer spells potential brood cow all over!!

14

BREESEE ACRES WINNIES LAD 4
BAR HEART BARIN 325T (1381067)
HAMBLIN ERICA 325P

WINDING CREEK MASTERPLAN 76M
WINDING CREEK MATILDA 69R (1253964)
WINDING CREEK MATILDA 14H

BREESEE ACRES ROSES LAD
WINNIE OF REO 10
HAMBLIN NEW TREND 324L
LITTLE BUFFALO ERICA 19D 18F
JAY EN DEE MASTERPLAN 3
WINDING CREEK LASS 94G
DALRENE MASTER 25E
WINDING CREEK MATILDA 4Z



CONSIGNED BY BRANDL CATTLE CO. - 780-954-2599

Lot #15 - BCC Black Velvet 59X

BCC BLACK VELVET 59X

Female BCC 59X January 26 2010 #1550025

BW: 73 lbs. Adj. 205D: 619 lbs. Adj. 365D: 789 lbs.

'11 Fall EPD's BW:+2.6 WW:+39 YW:+53 Milk:+17 TM:+37

Exposed: April 23 – June 5 to Justamere 422 Eric 728W

Observed Bred: April 28 **Ultra Sound:** safe to that date

Brandls' have brought 3 daughters of the great breeding Johnny Walker 4U whose dam is one of their top females and produced their young herdsire, Prairie Storm. Clarice 26K traces to Torro Negro Tradition 55H and Ridge Lane Tibbie 34N.

The Black Velvet cow family continues to be the maternal cornerstone to the Brandl Cattle Co., all descending from the matriarch Ed Rene Black Velvet 38P who produced until she was 18. Black Velvet 11K is a maternal sister to the popular Brandl herdsire, BCC Honky Tonk 21M.

15

BJ JACK DANIELS 25'92
BCC JOHNNIE WALKER 4U (1429577)
 BCC CLARICE 26K

BJ JACK DANIELS 33'90
 TOMIL CLAUDIA GR 45S
 BCC JAZZ 044
 PJ'S CINDY-LEE 15'97
 HYLINE RIGHT TIME 338 AMF CAF NHF
 HYLINE ELLEN 86
 DMM DYNASTY 03G
 BCC BLACK VELVET 47H

HYLINE RIGHT WAY 781 AMF CAF NHF
BCC BLACK VELVET 30S (1312914)
 BCC BLACK VELVET 11K



CONSIGNED BY BRANDL CATTLE CO. - 780-954-2599

Lot #16 - BCC Black Velvet 29X

BCC BLACK VELVET 29X

Female BCC 29X January 15 2010 #1548675

BW: 83 lbs. Adj. 205D: 599 lbs. Adj. 365D: 874 lbs.

'11 Fall EPD's BW:+4.8 WW:+41 YW:+65 Milk:+17 TM:+38

Exposed: April 23 – June 5 to Justamere 422 Eric 728W

Ultra Sound Dated: to May 17 breeding

Wow talk about power! Johnnie Walker 4U is going to leave his mark at Brandls' and the Angus fraternity.

Black Velvet 7T was an undefeated yearling heifer in 2008 on the Alberta Farmer Express show series which encompasses six shows in North Central Alberta. The granddam, Black Velvet 22N, has possibly the top bull calf in the 2011 Brandl bull pen.

This heifer traces 3 times to the Brandl patriarch, Jack Daniels 25'92.



Jack Daniels 25'92 -
 Sire of Johnnie Walker 4u in
 Lot #15, #16 & #22

16

BJ JACK DANIELS 25'92
BCC JOHNNIE WALKER 4U (1429577)
 BCC CLARICE 26K

BJ JACK DANIELS 33'90
 TOMIL CLAUDIA GR 45S
 BCC JAZZ 044
 PJ'S CINDY-LEE 15'97
 BCC EILEENMERE LAD 17F
 PJ'S LYNN 31'97
 LAMBS OVERDRIVE 45E
 BCC BLACK VELVET 11H

BCC SHOCKIN' Y'ALL 1P
BCC BLACK VELVET 7T (1379506)
 BCC BLACK VELVET 22N

CANADIAN LEGACY BEAUTIFUL BRED HEIFERS



CONSIGNED BY RONAN R ANGUS FARM - 780-786-2961

Lot #17 - Ronan R Matilda 165X

17

RONAN R MATILDA 165X

Female KBB 165X February 19 2010 #1645790
BW: 87 lbs.

'11 Fall EPD's

n/a

FIGURE 8 ANGUS TOM BOY 509R
LOOKOUT HUCK 135T (1374621)
 SPRUCE VIEW FANNY 24L

ADELPHI TOM BOY 20H
 FIGURE 8 ANGUS LADY 604J
 BCC EILEENMERE LAD 23H
 SPRUCE VIEW FANNY 73B

RONAN R OUTBACK 109M
RONAN R MATILDIA 52T (1477265)
 GER-RIS MATILDA 2

BT OUTBACK 41H
 RONAN LENA 28A
 RONAN MAC 30K
 C P MATILDA 7E

Exposed: May 2 - June 14 to Ronan Bang Eston 101X

Ronan purchased a Tom Boy son from Roy in 2008 adding the maternal influence, soundness, calving ease but, best of all, overall quality. Pedigree-wise this heifer carries a knockout with the genetics being sound from top to bottom including the old Ronan Mac 30K, a very good breeding bull going back to Camilla Chance 37T! Mac was sold to Nor-TEX Farms in Texas what seems like a lifetime ago.



Ronan Bang Eston 101X
 Service Sire to Lot #10, #17 & #18

CONSIGNED BY RONAN R ANGUS FARM - 780-786-2961

Lot #18 - Ronan R Belle 96X

18

RONAN R BELLE 96X

Female KBB 96X March 12 2010 #1645791
BW: 89 lbs.

'11 Fall EPD's

n/a

ANGUS ACRES BANDOLIER 78K
RONAN R BADOLIER 606S (1369173)
 RONAN R OAKLEAF 13J

ANGUS ACRES BANDOLIER 19H
 ROYAL VELVET ANGUS ACRES 125G
 BLACKTOF RANCHER 71G
 RONAN OAKLEAF 21G

BELMORAL BAROS 7'00
RONAN R BELLE 51M (1100643)
 RONAN BELLE 303H

BELMORAL BAROS 4'75
 BELMORAL S PRIDE 38'97
 RONAN ALBERTA EXPRESS
 RONAN R BELLE 3F

Exposed: May 2 - June 14 to Ronan Bang Eston 101X

Another good 606S bred heifer and this one has that extra power to bring home a real good calf.

96X carries service to our Abangomere Eston son and are quite excited to get our first calves



CONSIGNED BY BRANDL CATTLE CO. - 780-954-2599

Lot #19 - BCC Lady Wren 1X

BCC LADY WREN 1X

Female BCC 1X January 04 2010 #1546765

BW: 68 lbs. Adj. 205D: 661 lbs. Adj. 365D: 865 lbs.

'11 Fall EPD's **BW:+2.7 WW:+39 YW:+52 Milk:+17 TM:+37**

A.I.'ed: April 8 – Camilla Bandolier 85J
Exposed: April 23 – June 5 to Justamere 422 Eric 728W
Sells Safe in Calf: to Camilla Bandolier 85J whose daughter raised the \$14,750 heifer to Get-A-Long, Mile High, and Glengary in 2007.

Daughter of an ET son from the \$16 000 Sandy Bar Bardolier 2B and many times champion, Black Velvet 11H, producer of BCC Superbull 19M to Wayne Grants' Spruce View Angus as well as BCC Dynasty 28L to Jim & Linda Sprangers' Clover Meadow Angus at Langley, BC. A pedigree built around powerful females like Black Velvet 11H, Heather 5H, and Lady Wren 3'97.

SANDY BAR BARDOLIER 2B
BCC BARDOLIER 64U (1472854)
 BCC BLACK VELVET 11H

BJ BARDOLIER 24'90
 SANDY BAR MISS QUALITY 1M
 BJ JACK DANIELS 25'92
 BJ BLACK VELVET 26'89

BCC SPECIAL EDITION 36R
BCC LADY WREN 56U (1431007)
 BCC LADY WREN 2S

HOFF LIMITED EDITION SC 594 AMF CAF NHF
 CLOVER MEADOW HEATHER 5H
 HYLINE RIGHT WAY 781 AMF CAF NHF
 BJ LADY WREN 3'97



CONSIGNED BY BRAEMAR ANGUS - 403-546-2684

Lot #20 - Southholm Bride 3X

SOUTHOLM BRIDE 3X

Female SGF 3X January 13 2010 #Applied for

BW: 808 lbs. Adj. 205D: 6640 lbs.

'11 Fall EPD's **n/a**

Bred: May 19 – Southholm Heads Up 73X
Exposed: June 8th – July 10 to Arda Heads Up 10T

A direct daughter of the Dynasty 03G bull who sires females that are soooo awesome - they are deep bodied with great udders and look good raising calves! If you have the opportunity to see her dam, 105T, you will love this bred heifer that much more. The cow is a rip and for sure from the top end of the herd!!

WANDERING CRK DYNASTY JRM 2F
DMM DYNASTY 03G (906143)
 DMM MISS ESSENCE 22B

ESTON ENCOUNTER M G 55'71
 ROSE G V 37U
 DMM ESSOTERIC 67R
 HEATHERDOWN MISSIE 26S

LOMA LANES CRACKER JACK 12N
LOMA LANES BRIDE 105T (1399291)
 LOMA LANES BRIDE 105L

LOMA LANES CRACKER JACK 4F
 LOMA LANES ERROLINE 12K
 HDAF BATTLECRY 3G OF 24A
 LOMA LANES BRIDE 106G

CANADIAN LEGACY BEAUTIFUL BRED HEIFERS



CONSIGNED BY RONAN R ANGUS FARM - 780 786 2961

Lot #21 - Ronan R Miss Tip 8X

RONAN R MISS TIP 8X

Female KBB 8X January 21 2010 #1566506
BW: 83 lbs.

'11 Fall EPD's

n/a

Exposed: May 2 - June 14 to Ronan Bang Eston 101X

What a cool pedigree containing some of the breed greats - Camilla Bandolier, Albertan, Concord and the old mainstay, Abangomere Eston.

You will drive a lot of miles to line up a pedigree like this - you will drive a lot of miles to find a heifer like this as well! Moderate in frame but very good broody would best describe Tip 8X.

21

CAMILLA BANDOLIER 84G
RONAN R BANDOLIER 605S (1371423)
 RONAN BARBARA ROSE 27G

CAMILLA BANDOLIER 042D
 PRIDE OF SOUTHOLM 12A
 RONAN ALBERTAN 92A
 RONAN BARBARA ROSE 96S
 BANNER CONCORD 19S
 SPEARHEAD FERNETTA 86'82
 ABANGOMERE ESTON
 BLACK REGAL MISS TIP 12X

BANNER CONCORD 34X
RONAN MISS TIP 16P (1215399)
 RONAN REVA LASS 5E



CONSIGNED BY BRANDL CATTLE CO. - 780-954-2599

Lot #22 - BCC Miss Cassie 25X

BCC MISS CASSIE 25X

Female BCC 25X January 14 2010 #1548673

BW: 72 lbs. Adj. 205D: 515 lbs. Adj. 365D: 760 lbs.

'11 Fall EPD's

BW:+1.4 WW:+27 YW:+42 Milk:+16 TM:+30

Exposed: April 23 - June 5 to Justamere 422 Eric 728W
Ultra Sound Dated: to April 27 breeding

Feminine, deep bodied and easy fleshing describes this heifer that traces 3 times to the powerhouse Double A Willie Boy 2S. The Johnnie Walkers are an impressive sire group, having been favorites of many visitors at BCC in the past year.

Eileenmere Lad 17F was exported to England and was one of the greatest Canadian bulls to impact the UK Angus industry. The Cassie family traces back to a \$4000 daughter of the Canadian greats, Glendoddie Miss Cassie, purchased at the 1983 Cross Country Sale.

22

BJ JACK DANIELS 25'92
BCC JOHNNIE WALKER 4U (1429577)
 BCC CLARICE 26K

BJ JACK DANIELS 33'90
 TOMIL CLAUDIA GR 45S
 BCC JAZZ 044
 PJ'S CINDY-LEE 15'97
 BCC EILEENMERE LAD 17F
 PJ'S LYNN 31'97
 DOUBLE A WILLIE 11U
 SIR WMS MISS CASSIE 4962

BCC SHOCKIN' Y'ALL 1P
BCC MISS CASSIE 36S (1381163)
 BJ MISS CASSIE 29'89



CONSIGNED BY BAR HEART ANGUS - PH: 403-843-4133

Lot #23 - Bar Heart Lady Heather 29X

BAR HEART LADY HEATHER 29X

Female IKZ 29X January 18 2010 #1551558

BW: 79 lbs. Adj. 205D: 592 lbs. Adj. 365D: 695 lbs.

'11 Fall EPD's BW:+1.3 WW:+16 YW:+24 Milk:+1 TM:+9

A.I.'ed: to SAF Connection on March 29, 2011
Exposed: Linwood Lad 37W - April 10- June 2

29X is really a nice functional bred heifer that is sound and has a great udder coming and from an extremely productive cow family. The Lady Heather cows always get it done and we have two examples in this sale in this sweet bred heifer and her maternal brother in Lot #2.

With "Duke" up twice in the pedigree so close you will really be infusing some great genetics and power in the blood and in the animal itself.

23

BRESEE ACRES WINNIES LAD 4
BAR HEART BARIN 325T (1381067)
HAMBLIN ERICA 325P

BRESEE ACRES ROSES LAD
WINNIE OF REO 10
HAMBLIN NEW TREND 324L
LITTLE BUFFALO ERICA 19D 18F

BRESEE ACRES WINNIES LAD 4
BAR HEART LADY HEATHER 291S (1304530)
HAMBLIN LADY HEATHER 291P

BRESEE ACRES ROSES LAD
WINNIE OF REO 10
DA ES RO TWISTER 0627
POPLAR MDWS LADY HEATHER 10G



CONSIGNED BY BRANDL CATTLE CO. - 780-954-2599

Lot #24 - BCC Black Velvet 35X

BCC BLACK VELVET 35X

Female BCC 35X January 19 2010 #1548679

BW: 93 lbs. Adj. 205D: 558 lbs. Adj. 365D: 793 lbs.

'11 Fall EPD's BW:+5.1 WW:+16 YW:+26 Milk:+14 TM:+22

Exposed: April 23 - June 5 to Justamere 422 Eric 728W
Ultra Sound Dated: to May 02 breeding

A rare genetic opportunity. Accutron was the breed leading bull raised in the famed Southolm herd. He is the "go to" bull for calving ease, strong udders, great feet, and longevity with many of his daughters being "Elite" females.

Black Velvet 34M is a deep bodied, strong uddered daughter of the "Elite" Canadian sire, Overdrive. Black Velvet 52H was an "Elite" female and her dam was a daughter of Angus Acres Dancer 7Z and was one of the all time high performing cows to ever walk Brandl pastures.

24

WILDWOODS BRAE EXPRESS SK03
SOUTHOLM ACCUTRON (657168)
BARBARA OF ALJON 40P

GREENBRAE CHAIRMAN
BURTONS EILEEN LASS 206
SOUTHOLM MARSHALL 13K
BARBARA OF ALJON 98J

LAMBS OVERDRIVE 45E
BCC BLACK VELVET 34M (1107712)
BCC BLACK VELVET 52H

WIWA CREEK OVERDRIVE 5'88
DOUBLE J BARBARA 465X
BJ JACK DANIELS 25'92
BCC BLACK VELVET 234

CANADIAN LEGACY BEAUTIFUL BRED HEIFERS



Pacesetter 20U - Sire of Lot #25

Lot #25 - Bronyx Elena 333X

CONSIGNED BY BRONYX ANGUS - PH: 587-433-8600

BRONYX ELENA 333X

Female TOT 33X May 5 2010 #1578189
BW: 81 lbs. Adj 205D: 567 lbs.

'11 Fall EPD's BW:+3.6 WW:+35 YW:+58 Milk:+16 TM:+34

25

LOOKOUT PACESETTER 258M
 CRESCENT CREEK PACESETTER 20U (1480002)
 CRESCENT CREEK ROSEBUD 115F

DOUBLE AA BARDOLIER 322'03
 BRONYX ELENA 333U (1480492)
 DOUBLE AA ELENA 13'99

WILLABAR AMBUSH 45G
 GRASSY LANES MILLY 29U
 RITO 8094 PRAIRIELANE 2060 AMF
 CRESCENT CREEK ROSEBUD 4C 768143
 DOUBLE AA BARDOLIER 550'00
 DOUBLE AA ANNIE K 674'99
 DOUBLE AA BARDOLENE 30'94
 DOUBLE AA ELENA 13'94

A cow in the making in this broody heifer. Sired by a Pacesetter son out of the 115F cow who has written her own page in history for Crescent Creek and MWC. Of course, on the dam's side, we find the good Elena cow family from Double AA - they always make good cows.

CANADIAN LEGACY FANCY HEIFER CALVES



CONSIGNED BY SEALIN CREEK RANCH - 250-375-2268

Lot #26 - Sealin Creek Minnie 28Y

SEALIN CREEK MINNIE 28Y

Female PAK 28Y February 02 2011 #1607462
BW: 90 lbs.

'11 Fall EPD's

n/a

26

BLACKTOF ERIC 30M
 BLACKTOF ERIC 15S (1310556)
 BLACKTOF ERICA 27K

ANGUS ACRES HEADS UP 188L
 SEALIN CREEK MINNIE 50S (1328301)
 SEALIN CREEK MINNIE 86K

ERIC OF BLACKTOF 1K
 LAZY J BARBARA 27E
 ALTA BANDOLIER 02F
 BLACKTOF ERICA 79A
 ANGUS ACRES HEADS UP 124G
 ANGUS ACRES KARAMA 98H
 ANGUS ACRES TOM BOY 64D
 ADELPHI MINNIE 31C

On tour this summer I did a lot of miles and they were all worth it. My trip out to Monte Lake, BC, was a quick one but what a treat when I got there - beautiful country, good cattle and fresh mountain air - tough to beat that combo for sure!! Sealin Creek Minnie 28Y is no slouch and immediately caught my eyes and anyone else who has laid eyes upon here. This is a very good heifer!

CANADIAN LEGACY FANCY HEIFER CALVES



CONSIGNED BY GLEN ISLAY FARMS - 705-445-1526

Lot #27 - Glen Islay Maggie 12Y

GLEN ISLAY MAGGIE 12Y

Female JPC 12Y January 13 2011 #1604571

BW: 97 lbs.

Proj EPD's

BW:+5.6 WW:+24 YW:+36 Milk:+8 TM:+20

27

BARDOLENE LAD OF FAIRALTA 2U
BONNIE CHANCE BARDOLENE 10A (340640)
 BONNIE CHANCE BLACKCLASS 22

BANDOLIERMERE G V 16P
 BLUEBIRD BARDOLENE 81
 BLACKMAN OF SOUTHAVEN 2
 BONNIE CHANCE BLACKCAP 18
 WANDERING CRK DYNASTY JRM 2F
 DMM MISS ESSENCE 22B
 BANNER CONCORD 34X
 LADY JUMBO OF MARDON 263W

DMM DYNASTY 03G
GLEN ISLAY MAGGIE 24L (1041408)
 GLEN ISLAY LADY M 20F

12Y is a 3/4 sister to Glen Islay Pride 12N and is almost identical at the same age. Her mother, Maggie 24L, and her grandmother, Lady M 20F, are both still strong producers. We also have 3 maternal sisters to 12Y working for us and her powerfull full sister just raised a herd bull for Owen & Bryce Mawby from Unity, SK.

This heifer is extremely wide based, easy fleshing, and comes highly recommended to raise herd bulls and the kind of females that can improve a cow herd.



CONSIGNED BY FLEURY CATTLE CO. - 306-291-3960

Lot #28 - Fleury Elena 54Y

FLEURY ANNIE K 54Y

Female FAR 54Y February 22 2011 #626753

BW: 85 lbs. Adj. 205D: 667 lbs.

Proj EPD's

BW:+5.5 WW:+34 YW:+58 Milk:+9 TM:+26

28

DOUBLE AA BLACKMAN 292'01
DOUBLE AA BLACKMAN 414'06 (1329448)
 DOUBLE AA ANNIE K 27'00

DOUBLE AA BLACKMAN 252'96
 DOUBLE AA ANNIE K 603'92
 DOUBLE AA RETO 554'93
 DOUBLE AA ANNIE K 72'90

SASKALTA BARDOLENE 28M
DOUBLE AA ANNIE K 53'06 (1329584)
 DOUBLE AA ANNIE K 302'02

SASKALTA BARDOLENE 182H
 SASKALTA EDNA 780G
 DOUBLE AA BARDOLENE 578'98
 DOUBLE AA ANNIE K 29'99

Fleury Annie K 54Y is smooth, deep sided and is backed by a strong maternal cow family. Double AA Annie K 53'06 was one of our top picks when selecting out of the Double AA herd, is line bred Bardolene and has proven herself as one of the top at Fleury Cattle Company producing the lead off bull in last year's bull sale and Fleury Annie K 54Y, one of the top heifers this year.

Double AA Blackman 414'06 has done nothing but good for my program, leaving strong females and bulls that continuously top the sale.

Here is a powerful heifer, with a unique Canadian pedigree. Do not pass up this rare opportunity to bring some proven genetics into your program.

CANADIAN LEGACY FANCY HEIFER CALVES



CONSIGNED BY BRANDL CATTLE CO. - 780-954-2599

Lot #29 - BCC Erica 80Y

29

BCC ERICA 80Y

Female BCC 80Y February 13 2011 #1643161

BW: 82 lbs.

Proj EPD's

BW:+1.9 WW:+21 YW:+33 Milk:+6 TM:+17

BCC HONKY TONK 21M
BJ MR BAROS 95U (1432974)
B J BLACKCAP 6N

LAMBS OVERDRIVE 45E
BCC BLACK VELVET 47H
BCC DYNASTY 39K
BCC BLACKCAP 304

BCC HONKY TONK 21M
BJ ERICA 41T (1372546)
B J ERICA 23N

LAMBS OVERDRIVE 45E
BCC BLACK VELVET 47H
BCC DYNASTY 39K
CLOVER MEADOW ERICA 12H

A uniquely linebred heifer, 80Y's pedigree is doubled up on Honky Tonk 21M and Dynasty 39K resulting in 8 lines tracing to Baros of Alcan Angus 40'73 and 4 lines to Ed Rene Black Velvet 38P.

The guess work is gone here - this heifer will have maternal power, longevity, muscle and performance



CONSIGNED BY FLICEK FARMS - PH 306-823-4725

Lot #30 - RNRF Miss Roseland 107Y

30

RNRF MISS ROSELAND 107Y

Female RNRF 107Y March 24 2011 #1623278

BW: 88 lbs. Adj. 205D: 719 lbs.

Proj EPD's

BW:+2.8 WW:+36 YW:+62 Milk:+10 TM:+28

BLACKTOF ERIC 15S
ANGUS ACRES ERIC 78U (1441743)
ANGUS ACRES STARTEL 178K

BLACKTOF ERIC 30M
BLACKTOF ERICA 27K
GLENNIE SPARTAN 20R
ANGUS ACRES STARTELL 378H
VIKING RUBY BANDY 011L
ANGUS ACRES LAWN 85D
BCC EILEENMERE LAD 39H
PAHL MISS ROSEBUD 7E

ANGUS ACRES RUBAN 115P
ANGUS ACRES MISS ROSELAND 307T (1404154)
ANGUS ACRES MISS ROSELAND 307P

A dynamite heifer that I was able to squeeze out of Rick and Ruby's herd **WOW!**

Just an end of March and with a bright future ahead of her, she is sired by the powerful bull, Angus Acres Eric.

107Y is loose made, big barrelled, has great feet and legs and a very good disposition.



CONSIGNED BY BRAEMAR ANGUS - 403-546-2684

Lot #31 - Southholm Pride 23Y

SOUTHOLM PRIDE 23Y

Female SGF 23Y Februaury 25, 2011 #Applied For
BW: 85 lbs. Adj. 205D: 655 lbs.

Proj EPD's

n/a

31

ARDA DIRECT 32R
 ARDA DIRECT 23T NHF (1420555)
 ARDA PRIDE 79N

BANNER PRIMARY 76G
 SOUTHOLM PRIDE 92P (1237546)
 SOUTHOLM PRIDE 13G

ARDA DIRECT 85N
 ARDA BLACKCAP 57H
 SOUTHOLM STOCKMAN 30J
 ARDA PRIDE 76J 988173
 BANNER BLACKMAN 43A
 WHELAN'S HEATHER BLOOM 75A
 SOUTHOLM NEW TREND 39A
 SOUTHOLM PRIDE 74C

These Arda Direct calves are flashy and stout and have great hair coats and are well accepted. Bulls or heifers, they are carry that same look and eye appeal to them.

Pride 23Y is no exception to this and comes from one of Southholm's very good cow familys. Add Primary and the New Trend 39A bull in the mix and this heifer is really a sure thing in becoming a cow.



Canuck 26U - Sire of Lot #32

CONSIGNED BY LOOKOUT STOCK FARM - 780-835-3530

Blkbrd Blossom 191P - Dam of Lot #32

LOOKOUT BLKBRD BLOSSOM 62Y

Female LSFT 62Y February 19 2011 #1611107
BW: 94 lbs. Adj. 205D: 622 lbs.

Proj EPD's

BW:+3.8 WW:+25 YW:+40 Milk:+12 TM:+25

32

FIGURE 8 ANGUS TOM BOY 509R
 LOOKOUT CANUCK 26U (1457386)
 LOOKOUT COUNTESS 283M

SPRUCE VIEW JYM DANDY 40J
 SECTION 1 BLKBRD BLOSSOM 191P (1220711)
 SECTIONONE BLBIRD BLOSSOM 144E

ADELPHI TOM BOY 20H
 FIGURE 8 ANGUS LADY 604J
 WILLABAR AMBUSH 45G
 WILLABAR COUNTESS 98Y
 ANGUS ACRES JYM DANDY 93D
 SPRUCE VIEW JESTRESS 28D
 SECTION ONE LANCER 31B
 SECTION ONE BLBIRD BLOSSOM 26A

This young Canuck daughter is owned by our son Tanner. She is a sweet made, correct heifer stemming from his powerful Blkbird Blossom 191P cow that has done a great job for him.

If you've seen the bred heifers sired by Canuck at our November 9th sale and how correct they are, I believe this young heifer is going to be equally as good.

CANADIAN LEGACY FANCY HEIFER CALVES



CONSIGNED BY SPRUCE VIEW RANCHES - 780-385-2216

Lot #33 - Spruce View Lena 4Y

33

SPRUCE VIEW LENA 4Y

Female WGO 4Y January 26 2011 #1611796
BW: 96 lbs.

Proj EPD's

n/a

BRESEE ACRES WINNIES LAD 4
 BAR HEART BARIN 325T (1381067)
 HAMBLIN ERICA 325P

BRESEE ACRES ROSES LAD
 WINNIE OF REO 10
 HAMBLIN NEW TREND 324L
 LITTLE BUFFALO ERICA 19D 18F

CRESCENT CREEK CHIEF 45L
 SPRUCE VIEW LENA 31P (1214980)
 CL ANGUS LENA 11K

DWAJO CHIEF 92E
 ANGUS ACRES LAWN 85Z
 GEIS ACHIEVER 73'98
 SILVER DOME LENA 53B

Lena 4Y comes from a very good cow in our herd, Lena 31P, who has given us three bulls and all three of them being well accepted in our Annual "ABC Bull Sale" in Veteran every April.
 We purchased 4Y's sire out of the "Masterpiece" in 2009 and have been very happy with his progeny as they are consistent and very useable.
 With Bresee Acres Winnies Lad 4 as the paternal grandsire we have no doubt that these heifers will turn in to top notch cows.



CONSIGNED BY BAR HEART ANGUS - PH: 403-843-4133

Lot #34 - Bar Heart Ruby 115Y

34

BAR HEART RUBY 115Y

Female KSX 115Y February 05 2011 #1607433 AMF NHF
BW: 87 lbs. Adj. 205D: 586 lbs.

Proj EPD's

BW:+1.8 WW:+29 YW:+52 Milk:+15 TM:+30

BON VIEW WINTON 1342
 BLIND CREEK LAD 25H (456369)
 ENCHANTRESS ERICA G S F 13D

BAR HEART WINTON
 BON VIEW GAMMER 440
 DIAMONDHEAD BANDOLIERMERE 79Z
 BLACK POLL ESTON MISS 14N

S A V INITIATIVE 4406 AMF CAF NHF
 LINWOOD RUBY 25T AMF NHF (1388613)
 LINWOOD RUBY 26P

S A V 8180 TRAVELER 004 AMF CAF NHF
 S A V MISS BOBBIE 0405
 MILLCREEK PRECISE
 LINWOOD RUBY 24E

In 2010 Bar Heart purchased the Linwood herd and this heifer was an in-dam coupon. You will notice this heifer calf is sired by Blind Creek Lad who was born in 1976 and still very much in use today!
 The Lad's are correct, stout cattle that bull or heifer you will like them for their overall balance. Of course Lad goes back to the bull which Georgina's grandpa, W.O Armstrong, bred - Bon View Winton 1342. Both Winton 1342 and his paternal brother were slapped International Grand Champion Angus Bull in the consecutive years of 1974 and 1975.

CANADIAN LEGACY FANCY HEIFER CALVES



CONSIGNED BY FLEURY CATTLE CO. - 306-291-3960

Lot #35- Fleury Annie K 18Y

FLEURY ANNIE K 18Y

Female FAR 18Y February 08 2011 #1626741

BW: 83 lbs. Adj. 205D: 662 lbs.

Proj EPD's

BW:+3.9 WW:+38 YW:+63 Milk:+10 TM:+29

This thick, long bodied, broody female; Fleury Annie K 18Y, is the first Double AA Bardolene 50'08 daughter to be sold. He could be one of the finest Canadian Angus bulls around today. His dam, Double AA Annie K 280'96 is the maternal grandmother to the well known Double AA Old Post Bandler. Fleury Annie K 18Y's dam, Double AA Annie K 41'06, is another proven Annie K cow and produced a son in last year's bull sale which sold to Hi Low Angus.

Bardolene 50'08 has left us some tremendous females so I have decided to let this top heifer go. Take advantage of this opportunity, I can assure you there won't be many Double AA Bardolene 50'08 daughters leaving our program.

35

DOUBLE AA BARDOLENE 47'04
DOUBLE AA BARDOLENE 50'08 (1464835)
 DOUBLE AA ANNIE K 280'96

DOUBLE AA BLACKMAN 205'04
DOUBLE AA ANNIE K 41'06 (1329576)
 DOUBLE AA ANNIE K 257'02

DOUBLE AA BARDOLENE 8'98
 DOUBLE AA ANNIE K 289'02
 ANGUS ACRES WINSTON 249B
 DOUBLE AA ANNIE K 218'92

DOUBLE AA BLACKMAN 252'96
 DOUBLE AA ANNIE K 566'98
 DOUBLE AA BARDOLENE 587'98
 DOUBLE AA ANNIE K 82'93



CONSIGNED BY SEALIN CREEK RANCH - 250-375-2268

Lot #36 - Sealin' Creek Rosebud 96Y

SEALIN CREEK ROSEBUD 96Y

Female PAK 96Y February 26 2011 #1617277

BW: 90 lbs.

Proj EPD's

n/a

My trip to Sealin Creek was an interesting to see the challenges that breeders face in that country where it's about finding economical land to graze the cattle on through the summer. 120,000 acres is a start for sure!! We drove up and around the mountain for 45 minutes on logging trails without seeing a cow! The cattle can survive on their own and they eating anything that will sustain them and I don't care what breed they are, this is impressive! 96Y's dam has functioned in that tough environment to make it to an impressive 10 years of age.

Rosebud 96Y is a great heifer with a great pedigree that includes Jimbo, Eston, Taylor Made and the Heads Up 31D bull that headlined Ranch of the Vikings dispersal.

36

ANGUS ACRES HEADS UP 124G
ANGUS ACRES HEADS UP 188L (1059996)
 ANGUS ACRES KARAMA 98H

ANGUS ACRES RENE ESTON 183G
ADELPHI ROSEBUD 48L (1062591)
 ADELPHI ROSEBUD 4A

ANGUS ACRES HEADS UP 31D
 DV KARAMA ESTON 3C
 ANGUS ACRES TAYLOR MADE 53E
 ANGUS ACRES KARAMA 38E

ANGUS ACRES RENE ESTON 181C
 ANGUS ACRES TIPTOP 83W
 PEGLEEBOB JIMBO 43P
 ADELPHI L BUFFALO ROSEBUD 17U

CANADIAN LEGACY FANCY HEIFER CALVES



CONSIGNED BY SPRUCE VIEW RANCHES - 780-385-2216

Lot #37 - Spruce View Col Girl 103Y

37

SPRUCE VIEW COL GIRL 103Y

Female WGO 103Y February 17 2011 #1611890

BW: 94 lbs.

Proj EPD's

n/a

ANGUS ACRES BANDY 96X
ANGUS ACRES X BAND 128N (1168962)
 ANDERS BLACKBIRD 4C

ANGUS ACRES BANDOLIER 75T
 ANGUS ACRES LADY 90R
 ANGUS ACRES DANCER 7Z
 SILVERBUCKLE BLACKBIRD 1R
 DOUBLE AA BLACKMAN 252'96
 GEIS PRIDE 209'96
 ANGUS ACRES JURASSIC 69E
 SPRUCE VIEW COL GIRL 16Y

GEIS BLACKMAN 7'00
SPRUCE VIEW COL GIRL 106R (1262514)
 SPRUCE VIEW COL GIRL 49H

103Y is a top cut heifer we hate to see go but are glad to offer a very good one. She comes from a powerful cow that is a granddaughter of Blackman 252'96, a former show bull for Geis Angus Farms.

We feel we have a tremendous breeding son of the famed Bandy 96X who has certainly left his mark on the Angus world with this excellent daughters. 103Y's sire is leaving us with thick, useful progeny besides a sterling pedigree. There is a lot of promise and upside to this heifer and her pedigree contains other breed greats up close - Bandolier 75T, Texas Tea 19M and Lancer, all very useful good cattle that we like seeing in a pedigree.



CONSIGNED BY BRAEMAR ANGUS - 403-546-2684

Lot #38 - Southolm Blackbird 25Y

38

SOUTHOLM BLACKBIRD 25Y

Female SGF 25Y February 25 2011 #Applied For

BW: 85 lbs. Adj. 205D: 640 lbs.

Proj EPD's

n/a

ARDA DIRECT 32R
ARDA DIRECT 23T NHF (1420555)
 ARDA PRIDE 79N

ARDA DIRECT 85N
 ARDA BLACKCAP 57H
 SOUTHOLM STOCKMAN 30J
 ARDA PRIDE 76J 988173
 BANNER BLACKMAN 43A
 WHELAN'S HEATHER BLOOM 75A
 SOUTHOLM BAR LAD 12C
 SOUTHOLM BLACKBIRD 14T

BANNER PRIMARY 76G
SOUTHOLM BLACKBIRD 12M (1094374)
 SOUTHOLM BLACKBIRD 15F

Peter must be pretty darn proud of the job his Direct 23T bull is doing because he just doesn't miss. When Peter and I popped over the fence I was taken back by the consistency of the calves and found myself about 10 animals behind Peter because the bulls and the heifer calves look very good!

I like selecting cattle out of cows who have a bit of age on them because if they have lasted this long it was because they did so many things right.

CANADIAN LEGACY FANCY HEIFER CALVES



CONSIGNED BY BRANDL CATTLE CO. - 780-954-2599

Lot #39 - BCC Texxa 29Y

BCC TESSA 29Y

Female BCC 29Y January 21 2011 #1617480
BW: 68 lbs.

Proj EPD's

BW:+2.7 WW:+17 YW:+23 Milk:+10 TM:+19

39

EASTGATE ESTON 2
ED RENE ESTON 4E (407060)
 ED RENE SENORA

ESTON M G 19W
 IDOLENE BLACKCAP OF EASTGATE 5
 CAMILLA CHANCE 15W
 SENTA OF MYSTERY LAKE

BJ MR BAROS 89T
BCC TESSA 17W (1509680)
 BCC TESSA 19F

BCC HONKY TONK 21M
 B J BLACKCAP 6N
 BJ JACK DANIELS 25'92
 BJ TESSA 34'92

When two of the all time master cattlemen in the history of the breed partner up on a bull you know he's a great one! Frank Slezina & Ed Molzan both used 4E heavily in the Southolm and Ed Rene herds respectively. 4E was one of the longest, heaviest muscled Angus bulls, EVER.

29Y also has the 21st century Canadian genetics of Brandls' in Mr Baros 89T, Dynasty 39K and the immortal Jack Daniels daughter, Tessa 19F. 12 out of the last 14 years Tessa 19F has calved in January. The other 2 years she calved the first week of February. Fertility, longevity, structural soundness, muscle & style in 29Y!



CONSIGNED BY BAR HEART ANGUS - PH: 403-843-4133

Blind Creek Lad 25H - Sire of Lot #40

BAR HEART RUBY 127Y

Female KSX 127Y February 12 2011 #1607365 AMF CAF NHF
BW: 82 lbs. Adj. 205D: 605 lbs.

Proj EPD's

BW:+4.6 WW:+33 YW:+49 Milk:+10 TM:+27

40

BON VIEW WINTON 1342
BLIND CREEK LAD 25H (456369)
 ENCHANTRESS ERICA G S F 13D

BAR HEART WINTON
 BON VIEW GAMMER 440
 DIAMONDHEAD BANDOLIERMERE 79Z
 BLACK POLL ESTON MISS 14N

HYLINE RIGHT WAY 781 AMF CAF NHF
LINWOOD RUBY 27W AMF CAF NHF (1504375)
 LINWOOD RUBY 7H

HYLINE RIGHT TIME 338 AMF CAF NHF
 HYLINE ELLEN 86
 S A F FAME AMF CAF NHF
 LINWOOD RUBY 24D

Ruby 127Y's dam, a first calver, did a real nice job for her first go. 127Y's granddam is an excellent cow that has paid her way over the years, too.

Ruby 127Y is a direct daughter of the Lad 25H bull and what a rip she's gonna be. Seize the chance of buying a direct daughter as there aren't many chances to buy one!

CANADIAN LEGACY FANCY HEIFER CALVES



CONSIGNED BY BRAEMAR ANGUS - 403-546-2684

Lot #41 - Southolm Pride 13Y

SOUTHOLM PRIDE 13Y

Female FHR 13Y February 15 2011 #Applied For
BW: 80 lbs. Adj. 205D: 712 lbs.

Proj EPD's

n/a

41

ARDA DIRECT 32R
ARDA DIRECT 23T NHF (1420555)
 ARDA PRIDE 79N

SOUTHOLM STOCKMAN 19H
SOUTHOLM PRIDE 48L (1040632)
 SOUTHOLM PRIDE 88H

ARDA DIRECT 85N
 ARDA BLACKCAP 57H
 SOUTHOLM STOCKMAN 30J
 ARDA PRIDE 76J 988173
 TC STOCKMAN 365
 SOUTHOLM PRIDE 42A
 SOUTHOLM FLY TRAVELER 14F
 SOUTHOLM PRIDE 51F

Yet another one of these good Arda Direct 23T females - like using a cookie cutter, one after another are patterned the same. Great coats of hair, length of body, style and yet very very broody.

Note the age on the dam of this heifer - 10 years of age having this heifer calf and she still looks great. Maybe like a Cheryl Tiegs kinda thing?

Regardless, Peter and Christine opened the herd up and I think they are bringing to town an excellent set of cattle.

CANADIAN LEGACY UNIQUE SEMEN PACKAGES

SEMEN CONSIGNED BY MILLER WILSON ANGUS - PH: 780 372 3529

WANDERING CRK DYNASTY JRM 2F

Male WLS 2F February 22 1974 #430093
BW: n/a

Selling 1 Pkg of 5 Ampules of Canadian Qualified Semen

42

ESTON M G 4W
ESTON ENCOUNTER M G 5571 (385190)
 BLACKCAP OF A L F 10S

BANDOLIERMERE G V 4N
ROSE G V 37U (243857)
 ROSE G V 23N

LINKMERE ESTON 6T
 BLACKCAP OF A L F 30S
 ENERGY BET OF A L F
 ALKALI LAKE BLACKCAP SALLY
 BANDOLIERMERE G V 100
 EBA OF A L F 4K
 ARGWEN ERE BARDOLIER 48J
 ROSE OF A L F 12K

Semen on Dynasty 2F? This is *unreal* and certainly a great way to kick off this section of the "Legacy Sale". I am not sure when the last time semen was available on this breed legend but it has been a while!!!

The Dynasty name will always be associated with great females and touring Lee and Dawn's herd this summer made my mouth drop at how sweet the daughters of Dynasty 03G were, he happens to be his most famous son. Just recently at the Lookout Dispersal a son of Dynasty 2F sold to Ricky Hyland in South Dakota for \$8500 and the daughters averaged over \$3000. This isn't nostalgic, this is cold hard facts that these genetics are still as much in demand today as they ever were.

'11 Fall EPD's

BW:+1.2 WW:+20 YW:+19 Milk:+7 TM:+17

SEMEN CONSIGNED BY ANGUS RIDGE - PH: 306-453-6010

CANADIAN CONCORD

Male KMZ 27C March 06 1993 #768207
BW: n/a

Selling 1 Package of 5 Straws

43

WOODLAWN ESTON 22
ANGUS ACRES LAWN ESTON 2F (435215)
 EILEENMERE LADY ARMITAGE 3U

ANGUS ACRES TEXAS TEA 19M
ANGUS ACRES COUNTESS 70S (601186)
 TRI J K COUNTESS 012N

BANDOLIER ESTON G V 7Y
 WOODLAWN BARBARA 100
 EILEENMERE LAD 10
 WOODLAWN LADY EILEENMERE 5
 WACO ESQUIRE 20776
 ANGUS ACRES ROYAL VELVET 9J
 BLACK BROWE BANDOLIER 5K
 TRI J COUNTESS 12J

Concord semen, wow! Thank you to Walter Brown for offering this semen as very very very little semen has been available on this bull.

Concord's dam, Countess 70S, carries a real good track record being the dam to Angus Acres Dancer 7Z, Canadian Rocky, Concord and another bull named Angus Ridge Canadian Eston who was a Pacesetter son.

The Concord cattle will be long and muscular and the daughters will be what you really will cherish.

'11 Fall EPD's

BW:+1.6 WW:+15 YW:+20 Milk:+15 TM:+23

CANADIAN LEGACY UNIQUE SEMEN PACKAGES

SEMEN CONSIGNED BY ANGUS ACRES - PH: 780-336-2445

ANGUS ACRES BANDY 214Y

Male FTB 214Y March 18 1989 #681711
BW: n/a

ANGUS ACRES BANDOLIER 53P
ANGUS ACRES BANDOLIER 75T (611568)
ANGUS ACRES GOLDY 75P

ANGUS ACRES BANDOLIER 78K
LUCY OF BLACK BONANZA 3H
ANGUS ACRES DYNASTY 72J
BLACK BONANZA GOLDY 62H

ANGUS ACRES TEXAS TEA 19M
ANGUS ACRES IVY 16T (611545)
WAVENY IVY 14'81

WACO ESQUIRE 20776
ANGUS ACRES ROYAL VELVET 9J
FAIRMAC CHALLENGE 25'78
WAVENY IVY 14'77

'11 Fall EPD's BW:+4.2 WW:+22 YW:+29 Milk:+9 TM:+20

Selling 20 Straws in Total:

44A) 1 Package of 5 Straws

44B) 1 Package of 5 Straws

44C) 1 Package of 5 Straws

44D) 1 Package of 5 Straws

Angus Acres Bandy 214Y, cowmaker supreme and with a pedigree like this it's no wonder. 214Y was exported to Argentina and is only available through the use of A.I.

Great pedigree - Bandolier 75T, Dynasty, Texas Tea 19M and going back to Big Ben.

Expect some performance but also some daughters that will move your herd up another notch.

SEMEN CONSIGNED BY ANGUS ACRES - PH: 780-336-2445

ANGUS ACRES TEXAS TEA 19M

Male FTB 19M April 19 1980 #521763
BW: n/a

ESQUIRE NORTHERN MARSHALL 55
WACO ESQUIRE 20776 (463745)
ELBA OF A L F 10Z

COALBRIDGE MARSHALL 15
WILLABAR COUNTESS 21B
BARDOLIER OF A L F 25T
ELBA OF A L F 44S

WANDERING CRK DYNASTY JRM 2F
ANGUS ACRES ROYAL VELVET 9J (474182)
ROYAL VELVET OF ANGUS ACRES 9B

ESTON ENCOUNTER M G 55'71
ROSE G V 37U
CAMILLA CHANCE 10W
EILEENMERE LADY ARMITAGE 18V

'11 Fall EPD's BW:+5.9 WW:+31 YW:+38 Milk:+6 TM:+22

Selling 10 Straws in Total:

45A) 1 Package of 5 Straws

45B) 1 Package of 5 Straws

Now this is really an old time medley of some of the very best of Canadian breeding - Coalbridge Marshall 15 (sire to embryo's in Lot #4), Wandering Crk DynastY and some good old Camilla breeding.

The Texas Tea daughters will be excellent but he also sired some very good sons with one in particular being Angus Acres Tex 16S.

SEMEN CONSIGNED BY ZANIABAR ANGUS - PH: 780-586-0770

BRIMAR MR IRISH 18E

Male BIL 18E March 24 1995 #844562
BW: n/a

CARRIGROE MARK 2
RONAN R IRISH 28C (774692)
RONAN R ROSEBUD 27Y

CARN TRUSTY
CARRIGROE MARVEL 2
TOMIL GNEMERN GR 28U
RONAN R ROSEBUD 16P

LEITH CREEK REBEL 13Z
RONAN R EVENING TINGE 27C (769804)
RONAN EVENING TINGE 28X

FAIRMAC REBEL 98'85
MISS MORRISON OF KLESKUN 21M
RONAN ULTRA
RONAN EVENING TINGE 56U

'11 Fall EPD's BW:+0.3 WW:+18 YW:+26 Milk:+9 TM:+18

Selling 20 Straws in Total:

46A) 1 Package of 10 Straws

46B) 1 Package of 10 Straws

Mr Irish 18E really carries some outcross blood on the top side with some Irish breeding imported to Canada, Ian McDonald's Rebel bull and the great Evening Tinge cows from Ronan.

Calving ease with a pedigree twist but, like Angus do well, make very good daughters.

SEMEN CONSIGNED BY CASTLEROCK MARKETING - PH: 306-741-7485

BAROS OF ALCAN ANGUS 40'73

Male LAA 40E May 24 1973 #415176 AMF CAF NHF
BW: n/a

BLUEBIRD BARD OF 64K 44
BOVIMELA BAROS 13A (348766)
BOVIMELA BARDESS 16X

BLUEBIRD BARDOLIER 21
QUEEN MAE 77
BOVIMELA BARDMERE 12U
BOVIMELA BARDOLENE 16V

SOUTHOLM MARSHALL 57W
BELLA OF COALBRIDGE 34A (345489)
BELLA OF COALBRIDGE

MARSHALL OF SOUTHOLM 54U
FLORA OF SOUTHOLM 53U
BARDOLIER OF COALDALE 7
LADY BEULAH OF DUSTY LANE 1T

'11 Fall EPD's BW:+1.2 WW:+2 YW:+6 Milk:+3 TM:+4

Selling 1 Package of 5 Straws

We landed some of this special semen in a tank awhile back and thought it would be fitting to offer it up for the "Legacy Sale".

Baros of Alcan Acres 40'73 sired Loma Lanes Crackerjack 12J who went south to Erdmanns and Jim Baldrige as the High Selling Bull Calf out of the "Superstar Sale" in Edmonton.

A pedigree that is way off the map but has some interesting connecting points in such bulls as Southolm Marshall and Bovimela Baros, a herd builder for Belmoral Farms.



SEMEN CONSIGNED BY ZANIABAR ANGUS - PH: 780-586-0770

REMINGTON JUMBO 151R

48

Male (ET) RCC 151R May 27 2005 #1297236

BW: 90 lbs. Adj. 205D: 680 lbs. Adj. 365D: 1170 lbs.

HAPPYVALE BLACK BARD 34X
HAPPYVALE BLACK JUMBO 1B (367449)
BLACKCAP BOTHA

HAPPYVALE BLACKCAP 67M
HAPPYVALE BLACKCAP VIOLET 6T
BLACKCAP GRANDEUR
HAPPYVALE OF BOTHA 5

GEIS BARDOLENE 30'90
ANGUS ACRES LADY LAWN 15B (742163)
ANGUS ACRES LADY LAWN 5X

BARDOLENE OF PEAK DOT 204R
JAVA PRINCESS 2S
BOUGHBARON MARSHALL 90T
ANGUS ACRES LADY LAWN 5S

'11 Fall EPD's BW:+1.7 WW:+24 YW:+38 Milk:+3 TM:+15

Selling 20 Straws in Total:

48A) 1 Package of 10 Straws

48B) 1 Package of 10 Straws

Jumbo 151R offers a real neat mating of the Jumbo 1B bull whose semen at Remington's Dispersal averaged \$125/straw. The 1B progeny were in hot demand throughout the whole sale as the daughters impressed people with their overall balance.

151R's dam is a \$10,250 cow out of the "Northern Select" Sale years ago purchased by Remington - she became a very prolific flush cow for them.



1. TERMS: The terms of the sale are cash or cheque at par, payable to the sale clerk on sale day unless otherwise previously arranged with the seller prior to the sale. No releases will be given until satisfactory settlement has been made. All monies are in Canadian Funds, other funds will be accepted at the current rate or exchange.

2. BIDS: Every animal entering the ring will be sold to the highest bidder.

3. DISPUTES: In case of disputes, bidding will be reopened between the parties involved. If no further bid is made, the buyer will be the person from whom the auctioneer accepted the last bid. The auctioneer's decision in such matter will be final.

4. ANNOUNCEMENTS: Any changes from information in this catalogue will be announced from the auction block, such changes will take precedence over the printed matter in the catalogue. Buyers are therefore cautioned to pay close attention to any such announcements.

5. PURCHASER'S RISK: Each animal becomes the risk of the purchaser as soon as sold.

6. CERTIFICATE OF REGISTRATION: Each animal in the sale will carry registration papers issued by the Canadian Angus Association. A certificate duly transferred will be furnished to the buyer for each animal after full total payment has been made.

7. BREEDERS GUARANTEE:

- (a) All animals sold are guaranteed breeders.
- (b) All bred females have been declared safe in calf by a qualified veterinarian and carry no further breeder guarantee.
- (c) All calendar year heifer calves are guaranteed open at time of sale.
- (d) Any animal that has not proven itself a breeder within six months after date of sale, if in healthy condition, may be returned to seller at buyer's expense. The seller reserves the privilege of trying for a six month period to prove the animal a breeder. The seller, at his option, may either return the purchase price to the buyer or credit or replace the animal with another of equal value in full settlement and satisfaction of all claims. All complaints regarding breeding difficulties must be reported in writing by the buyer to the seller within time specified above and any animal returned must be free from disease and in good health. Any calendar year heifer calf flushed by purchaser is no longer guaranteed a breeder under this paragraph #7.

8. ACCIDENTS: Every precaution will be exercised to protect the safety and comfort of those attending the sale. Neither the owners, auctioneer, or any sale staff assume any responsibility in this matter and disclaim any liability, legal or otherwise, in the event of accident or loss of property.

9. LIABILITY: All persons attending the sale do so at their own risk and sellers assume no liability legal or otherwise for any accidents occurring in, on, or about the premises.

10. INSURANCE: Livestock insurance and/or transit insurance will be available.

11. EXPORT TESTING: In the case of animals purchased for export, the necessary custom, health, and export certificates will be supplied.



FOR MORE INFORMATION, CONTACT:

CASTLEROCK MARKETING

Shane & Tammy Castle

Cell: 306-741-7485 Ph: 306-784-2241

Box 415, Swift Current, SK S9H 3V8

www.castlerockmarketing.com

Catalogue available online at :

www.castlerockmarketing.com



Castlerock Marketing
Shane & Tammy Castle
Box 415, Swift Current, SK S9H 3V8



Welcome to the 1st Annual...

CANADIAN LEGACY!

Showcasing 50 Lots
of CANADIAN ANGUS GENETICS

DECEMBER 13 2011

TUESDAY • 1:00 P.M.

OLDS COW PALACE • OLDS, ALBERTA