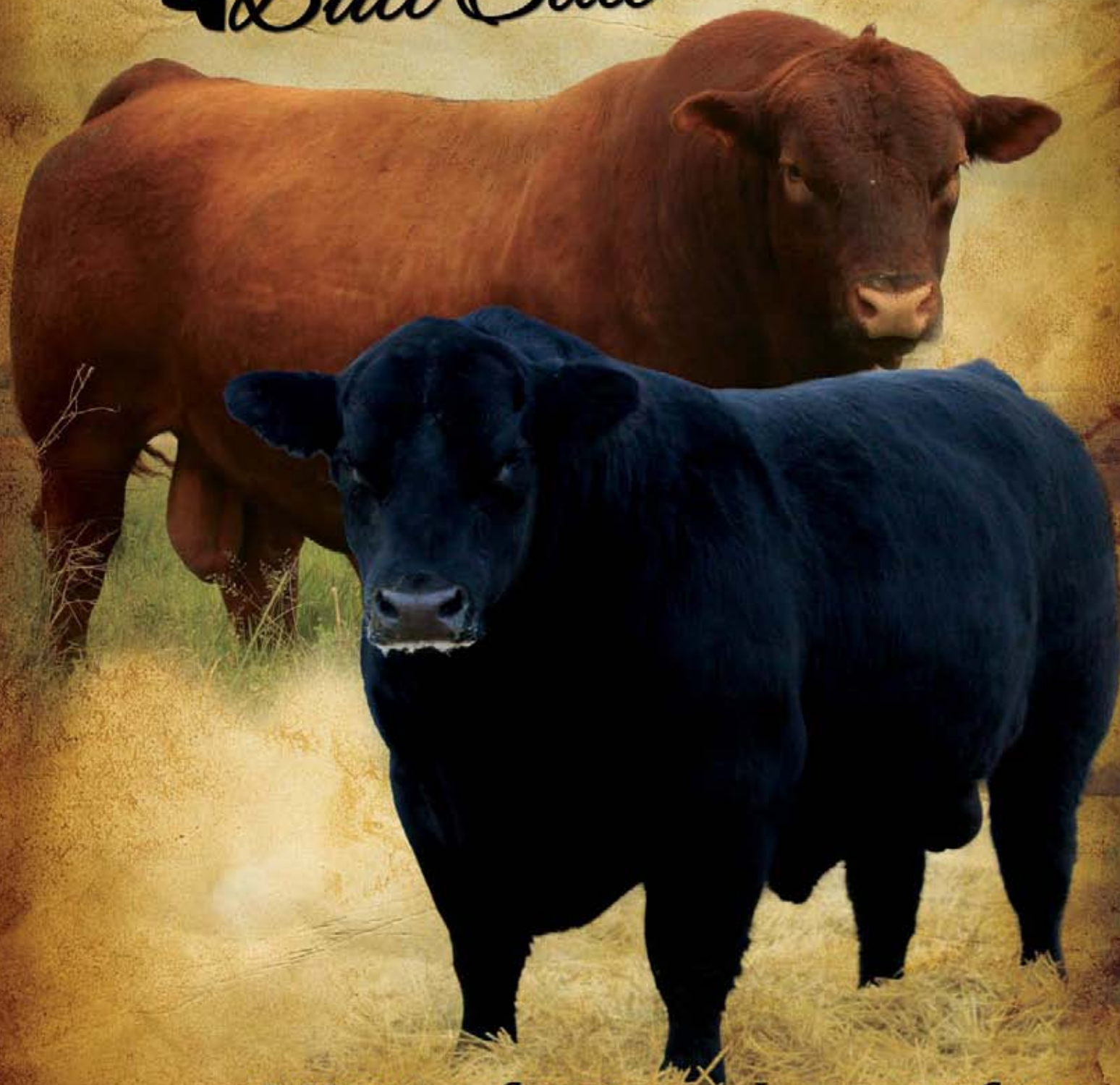


WHEELER'S & FLEURY PRESENT  
*The* **CATTLEMEN'S**  
*Bull Sale*



2:00 P.M. AT SASKATOON LIVESTOCK SALES  
**SATURDAY, MARCH 9, 2013**





## Welcome . . .

On behalf of Wheeler's Stock Farm and Fleury Cattle Company, we welcome you to the Cattlemen's Bull Sale on Saturday, March 9<sup>th</sup>, 2013 at 2:00 p.m. The Cattlemen's Bull Sale consists of two breeding programs, which will collaborate by offering 90 top Red & Black Angus yearling and two-year-old bulls. We would like to take the time to thank our customers for their continued support and faith that they have put into our breeding programs. These two operations have many similarities and one main focus when breeding cattle. Our goal is to provide the commercial cattlemen with the right bulls that will allow their calves to sell for a premium. We will continue to produce Angus bulls which excel in their breed characteristics, offer calving ease, are high in maternal traits, have longevity, and are low maintenance. The Wheelers have retained a special group of bulls that will be sold as two-year-olds in this year's sale. These bulls were not offered as yearlings and were held back purposely to be offered in 2013.

This entire sale is run by two families that have formed a partnership and work together to provide a superior product and service for our customers. We would like to welcome Bohrsen Marketing Services to our sales team; we feel their knowledge and commitment to the industry will enable us to provide optimal service to new up and coming bull buyers.

If we can assist you in any way prior to the sale, please don't hesitate to contact us. We hope to see you Saturday, March 9<sup>th</sup>, 2013 at The Cattlemen's Bull Sale. We invite you for dinner prior to the sale and encourage you to come and view our sale offering. We look forward to working with you and will continue to supply cattlemen with predictable bulls that will enhance their programs.



# **WHEELER'S & FLEURY PRESENT** **The CATTLEMEN'S** *Bull Sale*

## SATURDAY, MARCH 9<sup>TH</sup>, 2013

2:00 P.M. CST AT SASKATOON LIVESTOCK SALES • SASKATOON, SK

*Located six miles west of Saskatoon on Hwy #14*

### SELLING 90 RED & BLACK ANGUS TWO YEAR OLD & YEARLING BULLS

#### SALE DAY INFORMATION:

Lunch..... 12:00 p.m.  
Sale Time ..... 2:00 p.m.  
Social & Customer Appreciation Following the Sale

#### PHONE NUMBERS:

Saskatoon Livestock Sales.....(306) 382-8088  
Matt Fleury.....(306) 291-3960  
Michael Wheeler.....(306) 260-7336  
Harvey Wheeler.....(306) 230-3582  
Mike Fleury.....(306) 382-8088  
Auctioneer  
Craig Flewelling.....(403) 556-0515  
Nathan Marin.....(306) 869-7130  
Harvey Welter.....(306) 227-8684  
Saskatoon Livestock Sales  
Alvin Busby.....(306) 221-0905  
Saskatoon Livestock Sales  
Bill Dillabaugh.....(306) 965-2554  
Double AA Angus

**BOHRSON**  
*marketing services* 

Scott Bohrsen.....(403) 370-3010

#### THE CATTLEMEN'S SERVICE PROGRAM:

**Term:** 50% sale day and a post dated cheque for the balance dated May 31.

**Delivery:** Free delivery for purchases totaling \$2500 or more. Purchases totaling less than \$2500 will be delivered at cost. Bulls will be delivered as soon as possible following the sale. Bulls may be returned to the farm until delivery can be made or you pick up your bull.

**Wintering:** We are willing to winter your bulls free of charge until April 10th. After that date bulls will be kept for a cost of \$2.00/day. All bulls sent back to the farm MUST be insured for full mortality.

**Insurance:** Larry Toner from Stockmen's Insurance will be selling insurance sale day. Remember all bulls going back to the farm must be insured for full mortality.

**Cattlemen's Common Sense Breeding Guarantee:** All bulls will be semen tested and vet inspected. We fully guarantee all bulls sold 100%. In the event of a problem we guarantee to provide you with a quality bull to get your cows bred. We understand that when your livelihood depends on your cow herd's production you need service and not hassles.

**Sight Unseen Purchase Program:** For those who cannot attend, we offer a sight unseen purchase program. Call us with your needs and we will recommend suitable bulls. All bulls sold through this program do so with a satisfaction guarantee.

**Buyer Incentive Program:** Any animals shown by a buyer that are sired by a bull purchased at the Cattlemen's Bull Sale are eligible for a credit towards the next sale. Grand Champion \$500, Reserve Grand Champion \$250.

**Riviera Motor Inn Hotel (800) 667-5268**

2001 Ave B North Saskatoon - Ask for the Cattlemen's Rate

### Wheeler's Stock Farm

Box 284 RR#9 Saskatoon, SK S7K 1P3

Michael, Rhea, Ty & Tate Wheeler  
(306) 382-9324  
(306) 260-7336 Michael Cell

Harvey & Frances Wheeler  
(306) 931-8471  
(306) 230-3582 Harvey Cell

email: wheelers\_stock\_farm@hotmail.com

[www.wheelersstockfarm.com](http://www.wheelersstockfarm.com)

### Fleury Cattle Co.

Matthew Fleury

Box 177 Aberdeen, SK S0K 0A0  
(306) 253-4242  
(306) 291-3960 Matt Cell

[matt\\_fleury08@hotmail.com](mailto:matt_fleury08@hotmail.com)



# YOUNG BLOOD

*Printed in the 2012 Herd Reference Edition of Angus World  
Written by Laura Bodell :: Bella Spur Innovative Media Inc.*



## FLEURY CATTLE CO.

Matt Fleury is a fifth generation cattleman from a family that's been well known and respected in the seedstock cattle business for more than 50 years.

The family homesteaded near Saskatoon, Saskatchewan, in the early 1900's. Since that time, they have operated dairy and grain farms, raised commercial cattle and bred Charolais. Mike Fleury, Matt's father, is an auctioneer, manager and part owner at Saskatoon Livestock Sales. To say Matt is doing what's in his blood would be an understatement.

"At a young age I was very fortunate to be introduced to the cattle business, and I always knew this was a career I wanted to pursue," says Matt.



When Matt was 12 years old, he had saved \$3,000 dollars from his 4-H steer sales, and had two ways in mind of how to spend that money: one was buying a quad, as every 12-year-old boy dreams of, and the other was finding a good female to invest in and start a cow herd. After much thought, he settled on purchasing an Angus female. Having been successful with a Black Angus

cross steer, he decided to stay with the breed.

"At that time, Rancher's Choice had an annual sale in December that was known for quality stock," Matt recalls. "Dad came home the night before the sale and said, 'Matt, there is a really good bred heifer in the sale tomorrow I think you should take a look at.' After listening to Dad and looking her up on the Canadian Angus Association web site, I was convinced."

Twenty-four hours later, Matt was the proud new owner of Saskalta Blackcap 048K. She raised a bull calf, Fleury Winston 1M, that he was invited to sell in the Rancher's Choice spring bull sale.

"This was a great opportunity for me, but sad to say Winston took to scratching three weeks before the sale and scratched all his hair off," says Matt. "After this incident I didn't put him in the sale, but sold him to dad for his commercial herd."

With that profit, Matt invested in more Rancher's Choice females and eventually ended up putting a bull in the Rancher's Choice Bull Sale, which was purchased by Saskalta Farms.

Fleury Cattle Co. now runs 200 purebred Black Angus cows just north of Aberdeen, Saskatchewan, along the south Saskatchewan River. Matt's program is based on outcross Canadian genetics.

"I was very fortunate to meet a true mentor of mine early on, Bill Dillabaugh of Double AA Angus," explains Matt. "He gave me the opportunity to purchase a large part of his cowherd, which is world renowned for the Annie K cow family."

That group of cows was the result of 40 years of strict genetic development at Double AA Angus. "The Double AA program consisted of a closed herd developing their own genetics, and that is what I feel a true breeding program is," Matt says. "Very few people offer the bloodlines we use, and our genetics have been selected by cattle producers throughout Canada and the United States."

In the fall of 2005, Matt also purchased the entire Coyote Coulee Angus herd from Isaac Schellenberg.

"I am very grateful that these highly respected stockmen saw that I was expressing a keen interest in the cattle business and took me under their wing," Matt says. "This has helped me remarkably to get where I am today."

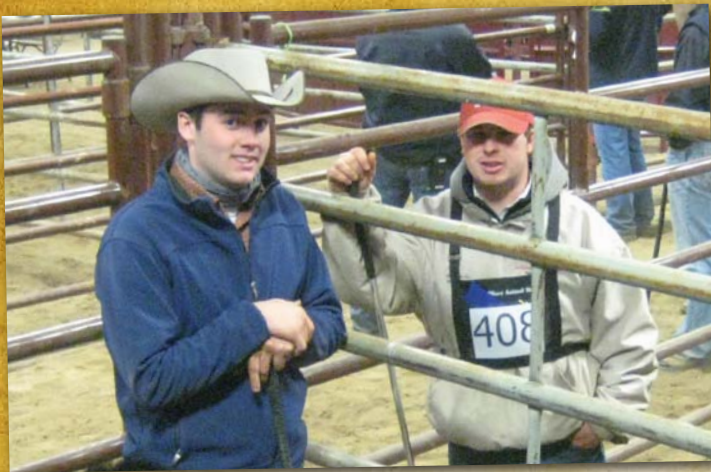
Some of the prominent bull lines in his program include Bardolene, Blackman, Bardolier, Bandolier, Tex, and Tommy Boy.

"The cattle business enables me to manage my own operation, be my own boss, do what I love doing, and work with great people on a daily basis," he says.

Matt's goal is simple, "I want to develop a reputation as having the industry's finest outcross genetics within the Angus breed - cattle that promote uniformity, consistency and predictability."

He believes the success of the Angus breed is due to the hard work and promotion of both breeders and staff within the Angus associations. "The consumer believes that Angus beef is No. 1," says Matt. "The challenge in the future is maintaining our position in the industry and breeding the right type of cattle that will feed and provide a product that the consumer demands."





Aside from Matt's involvement with his parents' cattle operation at an early age, his passion for the business was fueled by an eight-year 4-H career, and then receiving the Robert C. McHaffie Junior Angus Ambassador award in 2009. This role enabled him to travel to San Francisco, the 2009 World Angus Forum in Calgary, Toronto and Denmark, representing the Canadian Junior Angus Association.

"This was an unforgettable experience, providing me with the opportunity to meet young people that share the same interests in agriculture that I do," recalls Matt. "The people I met through being the Junior Angus Ambassador will be life-long contacts and will have a big impact on my future."

One of the people he met through 4-H was Michael Wheeler.



## WHEELER'S STOCK FARM

Though the Wheeler family is relatively new to the Angus business, breeding cattle has been in their blood for five generations as well. In fact, at one time they were running more than 500 commercial and purebred females.

Michael and Rhea, along with their sons Ty and Tate, and Michael's parents Harvey and Frances, own and operate Wheeler's Stock Farm just a few miles east of Saskatoon, Saskatchewan.

Even at age four, Ty loves to check cows – well, mostly his own cow. While riding out to the pasture with his dad last month, Ty turned to Michael to confirm, "My cow's tag says 'T-Y', right dad?" Michael nodded, and Ty told him, "Tomorrow, I have bull sale." Succession to the next generation may come early at WSF!

The Wheeler family added the purebred herd to their operation in 1997. Prior to that time, Wheelers had been running an Simmental/Charolais-based commercial herd.

"A lot of our commercial cows were being custom

grazed at Handford Red Angus, which is how we were first exposed to Angus," explains Michael. They had been AI'ing the cowherd for several years, and Handford's provided them with Red Angus semen.

"We really liked the calves," says Michael. "They came out easily and we really appreciated the vigour. There was no more messing around with getting calves up to suck."

The heavy end of the steer calves were weaning off at more than 800 pounds without creep, and the females made great replacements. After seeing how well the cattle worked, Wheelers started purchasing a few purebred Red Angus females. Then in the fall of '97, Handford's approached with a leasing opportunity, and Wheelers acquired their first group of 20 Red Angus females. The heifer calves retained from that agreement, along with a few purchased females, were the start of their Red Angus herd.

Some of Wheelers' foundation cow families include Avocet, Bridget, Becky and Misty, many of which are original Six Mile families. The nucleus of their herd came from being able to retain groups of half sisters from the Handford lease, along with sisters of several of the bulls they had originally used for AI on the commercial herd. Another female that had a tremendous impact on their program was Michael's first purebred 4-H project; many of their best females go back to this original Auburn cow family. Their most promoted female, however, was the Pride heifer purchased from Flyaway Red Angus at Red Roundup. She was shown almost every year of her life before she died in 2006, and was National Junior Supreme Champion Female at Showdown in Brandon, Manitoba.

Michael was a 4-H member for 12 years, as well as a Canadian Junior Angus Association member, culminating in serving as president of the CJAA. His first experience at a junior Angus event was the inaugural Showdown in Regina.

"It was the first livestock event I'd attended with representation from across the provinces, and so I met a lot of people," remembers Michael. "From that point, I was hooked, and never missed a provincial junior show for five years."

"Junior activities kept me involved with the herd, and I owned my own cattle, which made me really proud," Michael says. "It also kept me grounded and, really, kept me on the farm because I enjoyed going to the junior events so much."

He feels very fortunate that his parents always allowed him to have so much involvement in the program, from picking the original 20 cows to making breeding decisions. Since the beginning, Michael has been responsible for keeping all the records, including registrations and data submissions. In addition, he takes care of all the marketing – preparing and taking the showstring out, promoting the bull sale, and advertising.







“For a long time, we relied on the cattle to sell themselves,” Michael says, but they have seen a huge difference in their sale values as Michaels’ marketing expertise from his professional experience has been put to work at home.

“We are most proud of the cattle that have gone out and done the job for our commercial customers,” Michael says, “but we’re also really honoured to have placed bulls and females in several of Canada’s top purebred operations.” These include the Alliance bull sold to Bar E-L, another to Brylor Ranch, and several bulls & females working at Blairs.Ag.

Though Wheelers are primarily purebred breeders now, they stay involved with the commercial industry on a daily basis. Both their purebred and commercial herds have always been managed the same in terms of environment, and expected to produce at the same level.

One of the biggest reasons Wheelers are committed to the breed is they believe Angus are still the backbone of the commercial cowherd. “Our approach is to try and breed cattle that will work at all levels, but our main focus has always been to serve the commercial cattle producer,” Michael notes. “Having raised commercial cattle for so long, it’s really the base of our decisions making, from how we manage the cattle to how we market them.”

Michael also sees the ability the Angus breed has to stay on the cutting edge of research and breed development. “There is likely a lot more technology coming down the pipeline, and Angus certainly has an advantage in terms of resources.”

Even with the advancements in cattle breeding, he believes it’s critical to stay on course with what is really important. “We can’t lose focus on what is in demand from our customers,” says Michael. “One of the biggest opportunities Angus have is that they perform well at all levels of the production chain.”



For this reason, they obtain the best herd bulls they are able to acquire, rather than using AI sires, to increase consistency in the herd for bull customers to access more half and three-quarter brothers. This year Wheelers are using five bulls that carry their own prefix, which is more than half of their bull battery. A few of the most influential herd sires they have purchased have been None Better 260D from Handfords; Jack Daniels 18M, bought in dam with the purchase of the Pride cow; Paramount 13P from Bar E-L; Atlantic City from Northline; Gangster 14S from South View; Jack 25T from Double Bar D and now DMM Creed 75W from Miller Wilson.

His passion for the business makes even the toughest of days merely part of the experience for Michael. “I really enjoy the challenge of breeding cattle,” he explains. “Simply selecting genetics and learning about cattle is always interesting to me.” He also enjoys the opportunity to meet a large number of people at various industry events and learn from them. This is the inspiration for the Cattlemen’s Corner and Breed Changer sections on their new website, highlighting tidbits of advice Michael has picked up from others along the way.

“You’re always learning and improving,” Michael says. They certainly did learn, as Wheelers’ and Fleury’s annual Cattlemen’s Bull Event Sale is now one of the most successful Angus bull sales in Canada.

## CATTELMEN’S BULL SALE

Wheeler’s Stock Farm began marketing their bulls through an annual sale a short six years after they started breeding purebred Red Angus. In 2009, Michael and Matt teamed up to create the Cattlemen’s Bull Sale, which takes place the second Saturday of March each year at Saskatoon Livestock Sales.

“Our programs have similar goals,” Michael explains. “We are both focused on the commercial industry, have similar management styles, and having teamed up at a young age, we intend to keep the partnership for a long time.”

This unique partnership enables Wheelers to sell quality Red Angus and Matt to feature Black Angus genetics. “This allows us to market each others cattle and not compete,” says Matt.

He feels the way they run the sale defines them and their customers appreciate the family commitment. Between the two families, all of the sale operations are handled internally. Matt “pounds the pavement” and talks to people, while Michael takes care of the sale advertising and catalogue publishing. The Fleury family hosts the sale at SLS and also manages the accounts, while the Wheelers take care of the sale day meal and keeping the crew fed. Everyone pitches in to get the bulls ready.

“The approach we’ve tried to take with the sale is marketing it as a “Cattlemen’s Bull Sale” program,” Michael says. “Regardless of which breeder they purchase from, the quality and customer service will be the same.”

Perhaps their greatest strength, though, is the passion of their youth.

“We feel we have a tremendous future in the business because we are young, we love what we do, and we work well together,” Matt says. “I feel this sale will just continue to grow.”



# WHAT DO THE NUMBERS MEAN?

## Calving Ease Rating System:

**Power Plus ★:** Bulls marked with this symbol have more punch and will have larger calves at birth and more performance at weaning time. They are recommended for cows only.

**Curve Bender ★★:** Bulls marked with this symbol have more moderate birth weights while maintaining performance. They can be used on cows with no problems or large, well developed heifers preferably of British breeds. A few assisted births may be expected out of heifers.

**Sleep Easy ★★★:** As the name implies a Sleep Easy sire is a calving ease bull that lets you sleep easy knowing you should have very little calving difficulty. These are the bulls we recommend to use on heifers.

## Actual Weights & Data:

**BW:** Birth weight is the actual weight of a calf taken in pounds within 24 hours after birth.

**Adj. WW:** This is the weaning weight of a calf adjusted to a common age of 205 days and is adjusted for the age of the dam, for accurate comparison reasons.

**Adj. YW:** This is the yearling weight of a calf adjusted to a common age of 365 days to allow for easier comparison between bulls.

## Notes About EPD's:

EPD's between Black and Red Angus are not comparable.

**BW EPD:** The birth weight EPD is a figure expressed in pounds and is a predictor of an individual's contribution to its progeny at birth and is a comparison to breed average.

**WW EPD:** The weaning weight EPD is expressed in pounds as the average weight of his progeny compared to an average bull of the breed for weaning weight.

**YW EPD:** The yearling weight EPD is expressed in pounds as the average weight of his progeny compared to an average bull of the breed for yearling weight. It is the best indicator of overall growth.

**Milk EPD:** The Milk EPD is a predictor of a sire's genetic merit for milk and mothering ability as expressed in his daughters, or in other words that part of weaning weight attributed to milk production.

**TM EPD:** The TM EPD is a combination of an animal's Milk EPD added to 50% of its Weaning Weight EPD. It is an indicator of the growth potential of progeny based on performance and milking ability.

**CE EPD:** The Calving Ease EPD is a percentage of probability that a bull's calves will be born without any assistance. Therefore animals with a higher positive number will have greater probability of having no calving problems.

**MCE EPD:** The Maternal Calving Ease EPD is a percentage of probability that a bull's daughter's calves will be born without any assistance. Therefore daughters of an animal with a higher positive number will have a greater probability of having no calving problems.

**Carcass Data will be available sale day or prior to the sale upon request.**



# BULL POWER



Real Deal was added as an AI sire because he has a lot to offer our commercial bull customers. He excels in all the traits ranchers are looking for: deep bodied, dark red, hairy bulls with performance. His daughters are broody females with well shaped udders. They have a soft made, easy doing look and with their tidy udders are sure to be productive cows. His male and female progeny have been stand outs wherever he was used. Everyone who has calves from this breed changer says he really is "The Real Deal." Expect to see a lot more progeny in the future.



Some of the major faults we have seen in the Red Angus breed were the cattle needed a larger hoof with more depth of heel, more overall width (especially between the pin bones), and more pay weight. Atlantic City excelled and most importantly bred on and improved all those traits. We don't think there is any other bull in the breed that can add more squareness and dimension to the rump structure of his progeny. Like any great bull we feel he has outbred himself several times over and we will continue to use Atlantic City and his sons and grandsons for many years to come. His daughters have beautiful, tidy, level udders and will become the cornerstone of our cow herd.

Alliance sold through our bull sale in 2009 as the high seller at \$16,000 to Bar-E-L Angus & All Bull Holdings. Since then he has passed every test with flying colours. He has bred true like his sire, producing performance sons and very maternal females. His first daughters are calving now and really show the cow power of the Auburn females. You will really appreciate the performance, depth, muscle and scrotal in his sons. We are extremely proud to have bred a bull like Alliance and of how he has bred on at Bar-E-L.



Dodge City is one of those rare bulls that offers calving ease and performance. He has been used successfully on heifers because of his shorter gestation length. Dodge City's dam is a model Angus cow and has been in our embryo transplant program. Dodge City's first daughters have calved and sport perfect udders, which is typical of Atlantic City and his dam Miss Chief 7K. Unfortunately we lost Dodge City which was a huge genetic loss to a program.

Cowboy Cut had the world's attention after being named Reserve Grand Champion Bull at the 2009 World Angus Forum and 2010 National Western Stock Show. We bought semen in 2009 and have had our best luck mating Cowboy Cut to our Atlantic City and Gangster heifers. In our 2012 bull sale the Cowboy Cut sons from those heifers averaged around \$6,000. Cowboy Cut keeps birth weights moderate while offering capacity and tremendous maternal strength.



Jack has long been one of our lesser know herd bulls, but we have a feeling that is about to change in a big way. Jack sires tremendous dimension to his progeny with added capacity, bone, a great big foot and more hair than we have seen from any Red Angus sire. His pedigree is a little different for some programs and we plan on making him a big part of our program. He is currently one of our major walking bulls.



# NEW HERD SIRES WATCH IN 2014



**BIG DEAL**

Big Deal is one of our newest home raised herd bulls. He earned many admirers on the show road being a class winner at Red Round-Up, Grand Champion Red Angus Bull at Fall Fair, and Res. Senior Bull Calf Champion at Agribition. Big Deal should breed on the body type of Real Deal and was used primarily on our Atlantic City daughters to add softness and fleshing ability. Big Deal's dam, Heather 84S, has been a great producer and comes from one of the original cow families our herd is built around. His grand-sire Jack Daniels 18M and the Heather cow family make good uddered, big bodied cows that always wean calves at the top of the herd. Owned with Grass Roots Ranch.

Wheel N Deal has been a crowd favorite ever since he was a calf. We turned down several offers on him because we wanted to walk a Real Deal son of our own rather than relying on AI. The fact that Wheel N Deal's dam was one of our premier females with a pedigree that was unique to our herd only made him a better fit. Wheel N Deal has that special herd bull character, dark feet, great hair and muscle that are sometimes hard to find. He was the Reserve Futurity Champion at Red Round-Up and along side his dam won Grand Champion Female at Fall Fair. His dam is currently being flushed and we have a full sister that we have high hopes for.



**WHEEL N DEAL**



**DODGE CITY**

Dodge City 61Y offers tremendous growth in a deep sided, loose hided, correct package. He is one of those "size XXL" bulls weighing in at 1510 lbs with 42 cm testicles two weeks past his first birthday. We are extremely excited about what he has to offer and feel he will help take the breed to another level. The cow family backing this powerhouse only adds to the equation being big bodied, highly productive females. The Pride cow family is probably the most famous on the entire farm and many are feature donor cows. Dodge City 61Y himself has been one of our popular flush sires this year and we can't wait for his first calves to arrive. He was also our 2012 high selling bull to Brylor Ranch.

We purchased Gridmaster from Howe Red Angus in 2011. He is a direct son of the very popular Ribeye bull who we have admired for a long time and we wanted to walk a son. Gridmaster has proven to be a bull that can work in a variety of situations as he keeps birth weights more moderate than we expected and his smooth build has led us to use him on heifers and cows. His first sons are selling this year and are a very consistent sire group. They will be popular with people looking for a bull they can use on heifers and cows.



**GRIDMASTER**



**JACK**

After fully realizing how much the Jack line of cattle had to offer our herd we wanted to quickly introduce more of it into our genetics. The result was walking Jack 25T on our cows and Jack 115Y in our heifer pen. The Anne cow family he comes from are very maternal, great uddered cows that tend to pull the birthweights down. Jack 115Y is a replica of his sire offering the same depth, hair and great foot in a smaller BW package. With just a 72 lbs BW and WW of 802 lbs Jack 115Y offers the ideal growth curve. Owned with Grass Roots Ranch.

After losing our main walking herd sire Atlantic City we were in need of a power bull that could cover a large group of cows. When the chance to buy Creed came along he was a good fit as a walking bull that would add the same traits as Atlantic City: exceptional feet (probably the best we have ever seen on an Angus bull), length, style, and extra growth. He also brought to the table the exciting outcross pedigree from the highly proven Freedom line of Black Angus cattle and the record holding Essence cow family at Miller Wilson. We can't wait for his red progeny to arrive. Owned with Miller Wilson Angus.



**CREED**



# HELD OVER NOT LEFT OVER TWO YEAR OLDS



We have been getting so many requests for two year old bulls that we decided to develop a group of bulls to sell as two year olds in our 2013 sale. Our customers spoke and we listened. This year we are testing the waters because we know there is a demand for two year old bulls, but will it be economical for us to produce them. This group is the youngest part of our calf crop and will feature both calving ease and performance bulls. So if you are planning on expanding your operation and need bull power to cover larger groups of cows, we have the solution!



## BLACK WHEEL PARAMOUNT 112Y

RED CARRIER | 1626463 | FHW 112Y | 23/03/2011

RED TER-RON CINCH 910L  
RED BAR-E-L PARAMOUNT 13P  
RED BAR-E-L THELMA 19H

RED SVR GANGSTER 14S  
BLACK WHEEL ELSA 77U  
BLACK WHEEL ELSA 69P

CALVING EASE	BW	ADJ WW	ADJ YW	BW	WW	YW	M	T/M	CE	MCE
★★	84	766	1254	2.6	59	85	11	41	0.0	5.0

- Extra stout in a moderate, easy fleshing package
- His sire, Paramount, has left us some of our best females
- A well balanced bull that is the right kind for the industry today



## RED WHEEL HEADLINER 71Y

1712815 | FHW 71Y | 25/02/2011

RED HXC HEADLINER 6601S  
RED PIE HEADLINER 9012  
RED PIE RUBY 5020

RED NORTHLINE ATLANTIC CITY  
RED WHEEL FANCY LADY 134W  
RED WHEEL FANCY LADY 23N

CALVING EASE	BW	ADJ WW	ADJ YW	BW	WW	YW	M	T/M	CE	MCE
★★	88	690	1068	1.6	29	45	9	-	-	-

- Dark red, good footed, nice hip shape there is lots to like here
- A bull that could cover a lot of cows over a lot of miles and maintain his soundness and fleshing ability
- Raised by a first calf heifer with a beautiful udder



## RED WHEEL HEADLINER 93Y

1712821 | MFW 93Y | 10/03/2011

RED HXC HEADLINER 6601S  
RED PIE HEADLINER 9012  
RED PIE RUBY 5020

RED BAR-E-L PARAMOUNT 13P  
RED WHEEL REBA 101W  
RED WHEEL JACKIE 56R

CALVING EASE	BW	ADJ WW	ADJ YW	BW	WW	YW	M	T/M	CE	MCE
★★★	75	698	1105	0.7	18	28	6	-	-	-

- Moderate framed, thick made and easy fleshing
- Raised by a first calf heifer and would work well if you have a large group of heifers to breed
- Two year old calving ease bulls with this kind of stoutness are hard to come by, so don't miss out





## RED WHEEL COWBOY CUT 142Y

ET | 1712229 | FHW 142Y | 09/04/2011

RED LAZY MC STOUT 30S      RED HANDFORD NONE BETTER 260D  
RED LAZY MC COWBOY CUT 26U      RED HANDFORD AVOCET 901J  
RED LAZY MC STAR 185M      RED HANDFORD AVOCET 282D

CALVING EASE	BW	ADJ WW	ADJ YW	BW	WW	YW	M	TM	CE	MCE
***	ET	-	-	-0.5	59	86	13	-	-	-

- Exceptional calving ease prospect that is an embryo transplant calf from our old Avocet 901J cow
- Calving ease and exceptional maternal on both sides of his pedigree only add to his value
- Avocet 901J is still producing at 14 years of age, with a son selling last year to R&F Livestock



Donor Dam of Lot 4 - Red Handford Avocet 901J



## RED WHEEL ATLANTIC CITY 85Y

TWIN | 1626487 | MPW 85Y | 05/03/2011

RED PIE ATLANTIC 2204      RED LAKEFORD KAPTON 7M  
RED NORTHLINE ATLANTIC CITY      RED WHEEL BECKY 14R  
RED NORTHLINE QUEEN 240H      RED HANDFORD BECKY 805H

CALVING EASE	BW	ADJ WW	ADJ YW	BW	WW	YW	M	TM	CE	MCE
**	68	727	1125	0.0	51	86	19	45	0.0	-1.0

- Smooth made, square hipped Atlantic City son that could work on heifers or cows
- Becky 14R has an average BW on her calves of 76 pounds
- Becky 14R comes from a line of moderate framed, good uddered cows that are productive and last a long time



## RED WHEEL JACK 130Y

1626467 | FHW 130Y | 11/04/2011

RED DRYFORK K-C PRECISELY JACK      RED HANDFORD ROBIN HOOD 268J  
RED DIMLER JACK 25T      RED WHEEL FANCY LADY 31M  
RED DIMLER QUEEN 414P      RED RUTHE ELSA 978

CALVING EASE	BW	ADJ WW	ADJ YW	BW	WW	YW	M	TM	CE	MCE
**	81	862	1248	1.5	61	82	7	38	1.0	5.0

- Tremendous growth curve from an 81 lbs BW to an 862 lbs WW
- Good, dark feed like his sire and should be a good breeder
- Maternal brothers have sold to Grant Bruner, PFRA and Lloyd Saworski





7

## RED WHEEL PARAMOUNT 90Y

TWIN | 1626432 | FHW 90Y | 08/03/2011

RED TER-RON CINCH 910L  
RED BAR-E-L PARAMOUNT 13P  
RED BAR-E-L THELMA 19H

RED NORTHLINE ATLANTIC CITY  
RED WHEEL BUTTERCUP 4U  
RED HANDFORD BUTTERCUP 2K

CALVING EASE	BW	ADJ WW	ADJ YW	BW	WW	YW	M	TM	CE	MCE
★	72	682	1153	3.3	57	82	13	41	-4.0	2.0

- Smooth made bull with extra length and performance
- Add payweight to your calves and put money in your pocket
- Paramount and Atlantic City is a great cross



8

## RED WHEEL WARDEN 79Y

160074 | MFW 79Y | 04/03/2011

RED BAR-E-L RIBEYE 103R  
RED BAR-E-L WARDEN 144W  
RED BAR-E-L LARKABA 72N

RED SHODEREE DESTINY 114P  
RED BAR-E-L FANNY 50S  
RED BAR EL FANNY 7F

CALVING EASE	BW	ADJ WW	ADJ YW	BW	WW	YW	M	TM	CE	MCE
★	97	651	1125	1.6	54	83	8	-	-	-

- This bull was purchased in dam as our choice of the 2010 Bar-E-L female sale for her great udder and ideal phenotype
- His sire Warden has proven to be a great breeding sire, just like his sire Ribeye
- A bull that offers a different pedigree for those needing fresh genetics from our program



9

## RED WHEEL ALLIANCE 67Y

1712727 | MFW 67Y | 23/02/2011

RED NORTHLINE ATLANTIC CITY  
RED WHEEL ALLIANCE 22U  
RED WHEEL AUBURN 2K

RED TER-RON CINCH 910L  
RED BAR-E-L MALORIE 174S  
RED BAR-E-L MALORIE 86M

CALVING EASE	BW	ADJ WW	ADJ YW	BW	WW	YW	M	TM	CE	MCE
★	94	694	1083	1.4	53	80	15	-	-	-

- Long sided with extra muscle another bull that will add pounds to your calf crop
- Alliance has bred growth in his sons and maternal into his females so you can't go wrong here



10

## RED WHEEL ALLIANCE 107Y

1712728 | MFW 107Y | 21/03/2011

RED NORTHLINE ATLANTIC CITY  
RED WHEEL ALLIANCE 22U  
RED WHEEL AUBURN 2K

RED BAR-E-L APPROVAL 4L  
RED BAR-E-L URRISAL 14R  
RED YY URRISAL 007K

CALVING EASE	BW	ADJ WW	ADJ YW	BW	WW	YW	M	TM	CE	MCE
★	94	709	1218	1.4	54	96	14	-	-	-

- Another big performance son of Alliance with extra length
- Turn him and Lot 9 out with a big group of cows and make one big, even group of calves that will top the market
- His dam Urrisal 14R is a favorite of visitors
- We recently purchased some Approval semen to incorporate more of those genetics into our herd





11

## RED WHEEL REAL MCCOY 22Z

1695818 | MFW 22Z | 14/01/2012

RED TER-RON RELOAD 703T  
RED TER-RON REALDEAL 01W  
RED K ADAMS SAVANAH 11S

RED TER-RON CINCH 910L  
RED BBK BELLE 132R  
RED KSJ BELLE 2M

CALVING EASE	BW	ADJ WW	ADJ YW	BW	WW	YW	M	TM	CE	MCE
★	102	723	1265	5.0	71	103	4	39	-5.0	1.0

- We have been so impressed with Real Deal and we feel Real McCoy can carry this line forward
- Deep sided, dark red with lots of masculinity in a moderate package make him a real herd bull candidate
- His dam Belle 132R is the right kind, the kind you can never have enough of for her do-ability and production
- Our first Real Deal daughters have calved and they are every thing we hoped they would be
- Gestation 286 days (4 days over)



*Dam of Lot 11 - Red BBK Belle 132R*



12

## RED WHEEL EVOLUTION 3Z

1695804 | FHW 3Z | 02/01/2012

RED TER-RON RELOAD 703T  
RED TER-RON REALDEAL 01W  
RED K ADAMS SAVANAH 11S

RED SSS BUST'N 596F  
RED WHEEL BECKY 1N  
RED HANDFORD BECKY 114

CALVING EASE	BW	ADJ WW	ADJ YW	BW	WW	YW	M	TM	CE	MCE
★	99	812	1355	2.3	65	97	10	43	-1.0	4.0

- Evolution is one of those rare Angus bulls that has huge growth and performance but offers the maternal of a great Angus cow behind him
- Becky 1N is one of our reliable cows to produce a deep sided performance calf every year
- Two maternal brothers have sold to Hillcrest Colony



13

## RED WHEEL REAL DEAL 29Z

1695824 | FHW 29Z | 19/01/2012

RED TER-RON RELOAD 703T  
RED TER-RON REALDEAL 01W  
RED K ADAMS SAVANAH 11S

RED SSS BUST'N 596F  
RED WHEEL ROSE 4N  
RED SGCC ROSE 8G

CALVING EASE	BW	ADJ WW	ADJ YW	BW	WW	YW	M	TM	CE	MCE
★	94	720	1163	2.7	64	95	12	44	0.0	4.0

- A 3/4 brother to lot 12 it would be a wise investment to own both of these bulls and make one even group of calves
- Maternal brothers have sold to Hillbilly Cattle Co, Kieper Land & Cattle and Calvin Grindheim
- Most cows don't get to stay around until they are 10 years old like Rose 4N unless they are producers so buy with confidence





## RED WHEEL RIPPED 45Z

1695834 | FHW 45Z | 26/01/2012

RED TER-RON RELOAD 703T  
RED TER-RON REALDEAL 01W  
RED K ADAMS SAVANAH 11S

RED BAR-E-L PARAMOUNT 13P  
RED WHEEL ROSE 36S  
RED WHEEL ROSE 3L

CALVING EASE	BW	ADJ WW	ADJ YW	BW	WW	YW	M	TM	CE	MCE
★	97	813	1278	4.0	71	99	8	43	-2.0	2.0

- Ripped has been a favorite since birth with extra style, muscle and performance
- Class winner at Red Roundup and Reserve Senior Bull Calf Champion at Agribition
- His dam Rose 36S is an ET donor with embryos selling to GK Livestock, Australia this fall
- Rose 36S is great footed, heavy muscled and produced our best heifer calf last year



Maternal sister to Lot 14



## RED WHEEL REAL DEAL 27Z

TWIN | 1695822 | MFW 27Z | 18/01/2012

RED TER-RON RELOAD 703T  
RED TER-RON REALDEAL 01W  
RED K ADAMS SAVANAH 11S

RED BRYLOR NEW TREND 22D  
RED WHEEL AUBURN 17M  
RED WHEEL AUBURN 1J

CALVING EASE	BW	ADJ WW	ADJ YW	BW	WW	YW	M	TM	CE	MCE
★	84	567	1054	3.5	65	101	10	43	-3.0	1.0

- Tremendous genetic potential in these twins lots 15 & 16
- They will be the sleepers of the sale
- Their dam Auburn 17M has earned the ELITE dam designation from the Canadian Angus Association
- Maternal brothers have sold to Diamond K, and Mark Thoner and a full brother sold last year to Mark Margets



## RED WHEEL REAL DEAL 28Z

TWIN | 1695823 | MFW 28Z | 18/01/2012

RED TER-RON RELOAD 703T  
RED TER-RON REALDEAL 01W  
RED K ADAMS SAVANAH 11S

RED BRYLOR NEW TREND 22D  
RED WHEEL AUBURN 17M  
RED WHEEL AUBURN 1J

CALVING EASE	BW	ADJ WW	ADJ YW	BW	WW	YW	M	TM	CE	MCE
★	76	610	1006	3.5	65	101	10	43	-3.0	1.0

- Tremendous genetic potential in these twins lots 15 & 16
- They will be the sleepers of the sale
- The Auburn cows are heavy milking, productive cows you will probably notice this cow family several times in the sale
- Another good opportunity to own two full brothers





17

**RED WHEEL REAL DEAL 21Z**

160134 | MFW 21Z | 04/01/2012

RED TER-RON RELOAD 703T  
 RED TER-RON REALDEAL 01W  
 RED K ADAMS SAVANAH 11S

RED WHEEL DODGE CITY 3U  
 RED WHEEL BECKY 7X  
 RED WHEEL BECKY 805H

CALVING EASE	BW	ADJ WW	ADJ YW	BW	WW	YW	M	TM	CE	MCE
★ ★	80	692	1133	2.3	64	101	7	-	-	-

- A smaller birth weight Real Deal son raised by a first calf heifer; he was born unassisted
- He offers the dark red, hairy, good footed build of Real Deal
- Becky 7X is a well built, great uddered cow just like her dam 805H, who was a top producer until 12 years of age
- Gestation 281 days (1 day early)



18



18

**RED WHEEL REAL DEAL 36Z**

1695827 | FHW 36Z | 21/01/2012

RED TER-RON RELOAD 703T  
 RED TER-RON REALDEAL 01W  
 RED K ADAMS SAVANAH 11S

RED NORTHLINE ATLANTIC CITY  
 RED WHEEL BUTTERCUP 37W  
 RED HANDFORD BUTTERCUP 2K

CALVING EASE	BW	ADJ WW	ADJ YW	BW	WW	YW	M	TM	CE	MCE
★	102	773	1246	5.3	78	120	6	45	-5.0	-1.0

- Sure to be a crowd favorite this smooth made, deep sided attractive bull demands your attention
- Add more pounds to your calves and do not worry about calving your cows, we do not have any calving problems on cows with our genetics
- This bull is in the top 1% of the breed for WW & YW EPD's
- Gestation 285 days (3 days over)



*Red Wheel Dodge City 61Y - Maternal brother to Lot 19  
 2012 High Seller to Brylor Ranch*



19

**RED WHEEL PERFORMAX 44Z**

TWIN | 1695833 | MFW 44Z | 23/01/2012

RED TER-RON RELOAD 703T  
 RED TER-RON REALDEAL 01W  
 RED K ADAMS SAVANAH 11S

RED BRYLOR STALLION 19J  
 RED WHEEL PRIDE 29N  
 RED FLY AWAY PRIDE 161K

CALVING EASE	BW	ADJ WW	ADJ YW	BW	WW	YW	M	TM	CE	MCE
★	98	840	1242	5.1	72	115	8	44	-4.0	3.0

- Dark red, deep sided performance bull is what Pride 29N consistently produces every year
- Maternal brother was our 2012 high seller to Brylor Ranch
- Backed by an exceptional cow family that raises herd bulls
- Pride 29N will be flushed this coming year
- Top 1% of the breed for WW & YW EPD's



19







20

## RED WHEEL ALLEGIENCE 32Z

ET | 1712236 | MFW 32Z | 19/01/2012

RED PIE ATLANTIC 2204 RED HANDFORD NONE BETTER 260D  
RED NORTHLINE ATLANTIC CITY RED WHEEL AUBURN 2K  
RED NORTHLINE QUEEN 240H RED CRANSTON HERA 3G

CALVING EASE	BW	ADJ WW	ADJ YW	BW	WW	YW	M	TM	CE	MCE
★	ET	757	1203	1.7	55	85	16	-	-	-

- Allegience has big shoes to fill being a full ET brother to Alliance, high seller and herd bull for Bar-E-L Angus
- Allegience has the same muscle and herd bull look of Alliance and the older he gets the more excited we are
- A herd bull candidate with a proven full brother make Allegience one of the best opportunities of the season
- Backed by a stellar cow family with his dam and two sisters both being embryo donors



Maternal sister to Lot 20



Full brother to Lot 20  
Red Wheel Alliance 22U



21

## RED WHEEL ALLIANCE 60Z

1695842 | MFW 60Z | 03/02/2012

RED NORTHLINE ATLANTIC CITY RED WHEEL JACK DANIELS 18M  
RED WHEEL ALLIANCE 22U RED WHEEL ANN 51S  
RED WHEEL AUBURN 2K RED RSL ANN 920L

CALVING EASE	BW	ADJ WW	ADJ YW	BW	WW	YW	M	TM	CE	MCE
★	98	697	1162	1.2	47	77	18	41	-1.0	2.0

- This dark red, deep sided Alliance son will be easy to spot
- The maternal Ann family behind this bull would make him a good candidate to raise replacement females
- Maternal brothers have sold to A & L Cattle and PFRA



22

## RED WHEEL ALLIANCE 66Z

1695846 | FHW 66Z | 06/02/2012

RED NORTHLINE ATLANTIC CITY RED BAR-E-L PARAMOUNT 13P  
RED WHEEL ALLIANCE 22U RED WHEEL BRIDGET 54W  
RED WHEEL AUBURN 2K RED WHEEL BRIDGET 20N

CALVING EASE	BW	ADJ WW	ADJ YW	BW	WW	YW	M	TM	CE	MCE
★	94	729	1165	2.1	57	89	14	43	-3.0	4.0

- Dark red, smooth made with lots of muscle expression
- Alliance worked very well on our Paramount daughters producing very thick, easy doing progeny



## 23 RED WHEEL DAWSON CITY 96Z

1695859 | FHW 96Z | 22/02/2012

RED PIE ATLANTIC 2204 RED WHEEL JACK DANIELS 18M  
RED NORTHLINE ATLANTIC CITY RED WHEEL BRIDGET 31R  
RED NORTHLINE QUEEN 240H RED HANDFORD BRIDGET 113L

CALVING EASE	BW	ADJ WW	ADJ YW	BW	WW	YW	M	TM	CE	MCE
★	89	727	1209	1.5	50	81	17	42	-3.0	0.0

- A bull that has caught our attention since he was a calf
- Very complete, well balanced and sound made
- A full sister is one of our nicest young cows
- Very well balanced EPD's

## 25 RED WHEEL ATLANTIC CITY 124Z

1695879 | FHW 124Z | 10/03/2012

RED PIE ATLANTIC 2204 RED HANDFORD NONE BETTER 260D  
RED NORTHLINE ATLANTIC CITY RED WHEEL ROSE 3L  
RED NORTHLINE QUEEN 240H RED SGCC ROSE 8G

CALVING EASE	BW	ADJ WW	ADJ YW	BW	WW	YW	M	TM	CE	MCE
★	95	807	1235	2.3	59	94	18	47	-3.0	-2.0

- The youngest bull in our offering but packs as much performance as any in the offering
- Rose 3L is one of our old None Better daughters that has stuck around because she produces the good ones
- Maternal brothers have sold to Greg Grzybowski and Randy Breckner and a maternal sister Rose 36S is a donor cow

## 24 RED WHEEL ATLANTIC CITY 104Z

1712837 | MFW 104Z | 25/02/2012

RED PIE ATLANTIC 2204 RED WHEEL JACK DANIELS 18M  
RED NORTHLINE ATLANTIC CITY RED WHEEL JACKIE 56R  
RED NORTHLINE QUEEN 240H RED HANDFORD JACKIE 3K

CALVING EASE	BW	ADJ WW	ADJ YW	BW	WW	YW	M	TM	CE	MCE
★	91	719	1185	3.7	59	102	15	45	-7.0	-1.0

- A hairy, square made Atlantic City son from a cow that normally adds more hair to her calves
- You will notice most of the bulls from Jack Daniels cows are deep sided and have more hair than average
- If you have never used an Atlantic City son take advantage now as they will be limited in the future

## 26 RED WHEEL MILES CITY 1Z

NOT REGISTERED | FHW 1Z | 01/01/2012

RED NORTHLINE ATLANTIC CITY RED LAKEFORD KAPTON 7M  
RED WHEEL MILES CITY RED WHEEL AVOCET 12R  
RED HANDFORD AVOCET 170L RED HANDFORD AVOCET 901J

CALVING EASE	BW	ADJ WW	ADJ YW	BW	WW	YW	M	TM	CE	MCE
★	90	742	1137	1.5	46	62	20	43	4.0	5.0

- Sired by a feature bull from our 2011 sale sold to Hillcrest Colony
- His dam Avocet 12R has been designated as an ELITE dam by the CAA and his grand-dam 901J is an embryo donor
- Avocet 12R raises one of the high performing calves every year
- Maternal brothers have sold to Glen View Farms and Dennis Humeniuk
- SELLS WITHOUT REGISTRATION PAPERS







## RED WHEEL DODGE CITY 40Z

1695830 | FHW 40Z | 23/01/2012

RED NORTHLINE ATLANTIC CITY  
RED WHEEL DODGE CITY 3U  
RED HANDFORD MISS CHIEF 7K

RED DIMLER JACK 25T  
RED WHEEL AVOCET 101X  
RED HANDFORD AVOCET 8K

CALVING EASE	BW	ADJ WW	ADJ YW	BW	WW	YW	M	TM	CE	MCE
***	86	755	1194	1.3	52	85	15	40	-1.0	1.0

- Sired by our calving ease and growth specialist Dodge City
- Smooth made with a small head sure to be an easy calver
- Raised by a first calf Jack daughter with a great udder
- Get calving ease and growth with these Dodge City sons who were the high sellers in our 2012 sale



## RED WHEEL DODGE CITY 47Z

1695835 | FHW 47Z | 26/01/2012

RED NORTHLINE ATLANTIC CITY  
RED WHEEL DODGE CITY 3U  
RED HANDFORD MISS CHIEF 7K

RED BAR-E-L PARAMOUNT 13P  
RED WHEEL BRIDGET 51X  
RED WHEEL BRIDGET 7R

CALVING EASE	BW	ADJ WW	ADJ YW	BW	WW	YW	M	TM	CE	MCE
***	83	816	1291	0.3	52	79	15	41	0.0	2.0

- One of our favorites for the tremendous calving ease and growth curve he offers
- A calving ease bull with a herd bull look, enough bone and a large foot and a square made hip and top
- His dam has a beautiful udder and was one of the first to calve this year gaining a cycle as a first calver
- Gestation 273 days (9 days early)







## RED WHEEL COWBOY CUT 6Z

1695805 | MFW 6Z | 06/01/2012

RED LAZY MC STOUT 30S  
RED LAZY MC COWBOY CUT 26U  
RED LAZY MC STAR 185M

RED WHEEL DODGE CITY 3U  
RED WHEEL BECKY 6X  
RED HANDFORD BECKY 805H

CALVING EASE	BW	ADJ WW	ADJ YW	BW	WW	YW	M	TM	CE	MCE
***	78	680	1122	-0.7	50	78	14	39	2.0	1.0

- Proven calving ease on both sides of this pedigree
- Deep ribbed and an easy doing look
- The Cowboy Cut sons were crowd favorites last year but he sired mostly heifers last year so we don't have as many bulls
- Gestation 277 days (5 days early)



## RED WHEEL GRIDMASTER 10Z

1695808 | FHW 10Z | 07/01/2012

RED LAZY MC STOUT 30S  
RED LAZY MC COWBOY CUT 26U  
RED LAZY MC STAR 185M

RED JCC WARRIOR 5K  
RED WHEEL DAWN 34N  
RED KENRAY DAWN 113L

CALVING EASE	BW	ADJ WW	ADJ YW	BW	WW	YW	M	TM	CE	MCE
**	83	678	1275	-0.3	50	72	14	39	1.0	3.0

- This guy would be a good choice for those looking to breed some cows and a few heifers
- He carries the deep ribbed stamp of Cowboy Cut whose first females look to be making good cows
- Grand-dam Dawn 113L was an embryo donor



## RED WHEEL TOP CUT 50Z

1695836 | MFW 50Z | 28/01/2012

RED LAZY MC STOUT 30S  
RED LAZY MC COWBOY CUT 26U  
RED LAZY MC STAR 185M

RED SVR GANGSTER 14S  
RED WHEEL ANN 45X  
RED WHEEL HICK CHICK 7T

CALVING EASE	BW	ADJ WW	ADJ YW	BW	WW	YW	M	TM	CE	MCE
*	94	847	1273	2.4	67	97	12	46	-1.0	4.0

- Top Cut carries the stamp of his maternal grand-sire, Gangster, being longer bodied, dark red and higher performing
- Tremendous weaning weight of 847 lbs from a first calf heifer
- One of our favorites on grass all summer





32

## RED WHEEL GRIDMASTER 23Z

1695819 | MFW 23Z | 14/01/2012

RED BAR-E-L RIBEYE 103R  
RED HOWE GRIDMASTER 34X  
RED HOWE MS CRESTON 80S

RED BAR-E-L PARAMOUNT 13P  
RED WHEEL ANN 63U  
RED WHEEL DEEP CANYON 51P

CALVING EASE	BW	ADJ WW	ADJ YW	BW	WW	YW	M	TM	CE	MCE
★★	89	718	1158	0.7	49	66	12	36	3.0	4.0

- The first Gridmaster sons have all proven to have moderate birthweights while having extra length
- Built long and smooth, we think this bull could work well on heifers for the right person
- Lots of milk in his dam and the rest of the Ann cow family



34

## RED WHEEL GRIDMASTER 81Z

1695851 | FHW 81Z | 15/02/2012

RED BAR-E-L RIBEYE 103R  
RED HOWE GRIDMASTER 34X  
RED HOWE MS CRESTON 80S

RED NORTHLINE ATLANTIC CITY  
RED WHEEL ROSE 118W  
RED WHEEL ROSE 29P

CALVING EASE	BW	ADJ WW	ADJ YW	BW	WW	YW	M	TM	CE	MCE
★★	82	732	1161	1.1	54	79	13	40	0.0	0.0

- The deepest sided of the Gridmaster sons with a square hip
- Another calf that caught our eye out on pasture
- A bull that could be used on a variety of types of cows or even some heifers
- Gestation 282 days (due date)



33

## RED WHEEL GRIDMASTER 51Z

1695837 | FHW 51Z | 28/01/2012

RED BAR-E-L RIBEYE 103R  
RED HOWE GRIDMASTER 34X  
RED HOWE MS CRESTON 80S

RED BJR JR 105  
RED WHEEL HEATHER 5P  
RED WHEEL HEATHER 6K

CALVING EASE	BW	ADJ WW	ADJ YW	BW	WW	YW	M	TM	CE	MCE
★★★	87	682	1125	-1.6	45	62	7	30	6.0	5.0

- Another Gridmaster stamped with his long, smooth, dark red design; it will be tough to choose a favorite in this sire group
- Heather 5P has 6 calves with an average birth weight of 80 lbs hence the lower BW EPD for this bull
- Maternal brothers have sold to Kinzie Farms and Hank Dedden
- Gestation 281 days (1 day early)



35

## RED WHEEL KNIGHT 41Z

1712234 | FHW 41Z | 23/01/2012

RED YY RED KNIGHT 640F  
RED SVR KNIGHT 73P  
RED SVR JINNY 19K

RED DIMLER JACK 25T  
RED WHEEL BRIDGET 92X  
RED HANDFORD BRIDGET 907J

CALVING EASE	BW	ADJ WW	ADJ YW	BW	WW	YW	M	TM	CE	MCE
★★	86	736	1200	0.8	53	75	4	-	-	-

- We used the Knight 73P bull from South View as a proven AI bull on our heifers to offer some new genetics
- Raised by a first calf Jack daughter you will be impressed with the job she has done on this bull
- Knight is known for the exceptional females he produces
- Gestation 281 days (1 day early)



36

## RED WHEEL JACK 100Z

1695862 | FHW 100Z | 24/02/2012

RED DRYFORK K-C PRECISELY JACK  
RED DIMLER JACK 25T  
RED DIMLER QUEEN 414P

RED BAR-E-L PARAMOUNT 13P  
RED WHEEL RUBY 25W  
RED WHEEL RUBY 70R

CALVING EASE	BW	ADJ WW	ADJ YW	BW	WW	YW	M	TM	CE	MCE
★★	70	782	1218	-0.1	55	75	8	36	3.0	2.0

- This moderate, thick made Jack son offers a moderate birth weight with a great weaning weight
- The Ruby cow family is known in our herd for reducing birth weight but not growth
- One of the younger bulls in the offering; make sure you don't overlook this one







37

## RED WHEEL JACK 97Z

1695860 | FHW 97Z | 22/02/2012

RED DRYFORK K-C PRECISELY JACK  
RED DIMLER JACK 25T  
RED DIMLER QUEEN 414P

RED BAR-E-L PARAMOUNT 13P  
RED WHEEL HEATHER 108U  
RED WHEEL HEATHER 6K

CALVING EASE	BW	ADJ WW	ADJ YW	BW	WW	YW	M	TM	CE	MCE
★	97	749	1179	3.4	62	90	5	36	-4.0	3.0

- A hairy, big boned performance son of Jack from a moderate, easy fleshing Paramount daughter
- The Jack sons are on average a month younger than most of the other bulls, so you have to be impressed with their growth



39

## RED WHEEL ROB ROY 59Z

1695841 | FHW 59Z | 02/02/2012

RED WILD ROSE ROBIN HOOD 11F  
RED NORTHLINE ROB ROY 122K  
RED BAR EL SYBIL 122E

RED SVR GANGSTER 14S  
RED WHEEL BECKY 69W  
RED HANDFORD BECKY 114

CALVING EASE	BW	ADJ WW	ADJ YW	BW	WW	YW	M	TM	CE	MCE
★	99	719	1151	3.0	56	89	22	50	-4.0	5.0

- Rob Roy and Gangster has proven to be one of the great matings in the entire Red Angus breed
- A full brother sold to R&F Livestock last year and when we saw him in July at their branding he looked exceptional
- A different pedigreed bull in our offering if you have used a lot of our other lines in your herd



40

## RED WHEEL HEADLINER 25Z

TWIN | 1712823 | MFW 25Z | 13/01/2012

RED HXC HEADLINER 660IS  
RED PIE HEADLINER 9012  
RED PIE RUBY 5020

RED DIMLER JACK 25T  
RED WHEEL BECKY 86X  
RED WHEEL BECKY 78T

CALVING EASE	BW	ADJ WW	ADJ YW	BW	WW	YW	M	TM	CE	MCE
★★★	66	699	1219	0.8	31	50	5	-	-	-

- These Headliner sons are all dark red, long sided, and have dark feet that are sure to be trouble free
- Raised by a first calf Jack daughter who had twins and still re-bred to calve at the start of the herd this year
- Great udder quality in this cow family



41

## RED WHEEL HEADLINER 72Z

1712832 | FHW 72Z | 08/02/2012

RED HXC HEADLINER 660IS  
RED PIE HEADLINER 9012  
RED PIE RUBY 5020

RED DIMLER JACK 25T  
RED WHEEL BRIDGET 134X  
RED WHEEL BRIDGET 79U

CALVING EASE	BW	ADJ WW	ADJ YW	BW	WW	YW	M	TM	CE	MCE
★★★	76	661	1192	-1.5	22	34	4	-	-	-

- Another Headliner from a Jack heifer that is dark red
- Would be a safe bet to use on heifers
- One of the high indexing bulls from weaning till yearling
- Now might be the time to retain more heifers and we have the bulls that you need to get them bred



38

## RED WHEEL JACK 105Z

695866 | FHW 105Z | 26/02/2012

RED DRYFORK K-C PRECISELY JACK  
RED DIMLER JACK 25T  
RED DIMLER QUEEN 414P

RED NORTHLINE ATLANTIC CITY  
BLACK WHEEL ANNIE K 115U  
BLACK WHEEL ANNIE K 48S

CALVING EASE	BW	ADJ WW	ADJ YW	BW	WW	YW	M	TM	CE	MCE
★	104	794	1240	3.9	65	104	8	41	-6.0	-1.0

- Another typical Jack son being big boned, square hipped, deep sided and wide based
- Outcross black genetics going back to a Double AA Annie K





## 42 RED WHEEL HEADLINER 95Z

1712834 | FHW 95Z | 21/02/2012

RED HXC HEADLINER 6601S  
RED PIE HEADLINER 9012  
RED PIE RUBY 5020

RED NORTHLINE ATLANTIC CITY  
RED WHEEL ROSE 70X  
RED WHEEL ROSE 1L

CALVING EASE	BW	ADJ WW	ADJ YW	BW	WW	YW	M	TM	CE	MCE
★★★	72	748	1169	-2.2	27	45	10	-	-	-

- We have more calving ease bulls on offer than ever before so if you are retaining replacements we have many options for you
- Our Atlantic City daughters are becoming the cornerstone of our cow herd with 70 daughters and grand-daughters

## 44 RED WHEEL HEADLINER 88Z

1712947 | FHW 88Z | 17/02/2012

RED HXC HEADLINER 6601S  
RED PIE HEADLINER 9012  
RED PIE RUBY 5020

RED NORTHLINE ATLANTIC CITY  
RED WHEEL HEATHER 142X  
RED WHEEL HEATHER 16N

CALVING EASE	BW	ADJ WW	ADJ YW	BW	WW	YW	M	TM	CE	MCE
★	96	829	1372	-	-	-	-	-	-	-

- This Headliner son comes from a high performing Atlantic City daughter and is sure to grab your attention
- Dark red, big topped with a great foot

## 46 BLACK WHEEL ALLIANCE 63Z

RED CARRIER | TWIN | 1695844 | MFW 63Z | 05/02/2012

RED NORTHLINE ATLANTIC CITY  
RED WHEEL ALLIANCE 22U  
RED WHEEL AUBURN 2K

RED WHEEL JACK DANIELS 18M  
BLACK WHEEL COUNTESS 69S  
BLACK WHEEL COUNTESS 7N

CALVING EASE	BW	ADJ WW	ADJ YW	BW	WW	YW	M	TM	CE	MCE
★★★	80	667	1126	-0.1	45	78	18	40	1.0	3.0

- This heavy muscled Alliance son comes from one of our deepest bodied, easiest fleshing cow families
- A maternal brother was a sale feature last year selling to Blairs.Ag, and another sold to West Luselnd Enterprises
- An opportunity to use our highly proven Atlantic City line in a black hided package
- We would use this bull on heifers
- Gestation 269 days (twin 13 days early)



## 47 BLACK WHEEL GRIDMASTER 53Z

RED CARRIER | 1695839 | FHW 53Z | 30/01/2012

RED BAR-E-L RIBEYE 103R  
RED HOWE GRIDMASTER 34X  
RED HOWE MS CRESTON 80S

ELLIOTT BANDY 33M  
BLACK WHEEL ELSA 69P  
RED RUTHE ELSA 978

CALVING EASE	BW	ADJ WW	ADJ YW	BW	WW	YW	M	TM	CE	MCE
★★★	80	700	1211	-0.8	44	61	17	39	5.0	5.0

- This black Gridmaster son is made in the same smooth, deep sided pattern as his red brothers
- His dam Elsa 69P is a heavy milking productive cow so we would recommend keeping this bulls daughters
- Another good calving ease prospect

## 43 RED WHEEL HEADLINER 89Z

1712833 | FHW 89Z | 17/02/2012

RED HXC HEADLINER 6601S  
RED PIE HEADLINER 9012  
RED PIE RUBY 5020

RED NORTHLINE ATLANTIC CITY  
RED WHEEL BRIDGET 87X  
RED WHEEL BRIDGET 31R

CALVING EASE	BW	ADJ WW	ADJ YW	BW	WW	YW	M	TM	CE	MCE
★★	85	759	1219	0.8	28	45	10	-	-	-

- This bull's dam is a full sister to Lot 23 and she is a nice uddered, long sided young cow
- The Headliner sons are constantly sound in their structure
- Use this guy on cows or heifers

## 45 RED WHEEL HEADLINER 99Z

1712835 | MFW 99Z | 24/02/2012

RED HXC HEADLINER 6601S  
RED PIE HEADLINER 9012  
RED PIE RUBY 5020

RED NORTHLINE ATLANTIC CITY  
RED WHEEL ANN 106X  
RED WHEEL ANN 51S

CALVING EASE	BW	ADJ WW	ADJ YW	BW	WW	YW	M	TM	CE	MCE
★	98	798	1262	5.5	39	61	10	-	-	-

- A 3/4 brother to lot 44 these two bulls would work great together on a large group of cows
- Again dark red, big topped with a great foot, I think you see the pattern here with these Headliner sons

## 48 BLACK WHEEL TIGGER 62Z

160133 | FHW 62Z | 30/01/2012

HF KODIAK 5R  
HF TIGER 5T  
HF ECHO 84R

SAV 004 PREDOMINANT 4438  
BLACK WHEEL JESTRESS 88X  
CRESCENT CREEK JESTRESS 128F

CALVING EASE	BW	ADJ WW	ADJ YW	BW	WW	YW	M	TM	CE	MCE
★★★	80	809	1326	-	-	-	-	-	-	-

- An son of the highly proven and many times champion HF Tiger who is know for calving ease and huge growth
- This bulls dam is an ET daughter of the matriarch of our Black herd; back in the day, she was a tremendous cow
- This bull is homozygous black and would work great on heifers
- Gestation 273 days (9 days early)



# COW POWER

The strength and consistency of a bull pen can only be as great as the strength and consistency of the cow herd behind it. The Angus cow is the backbone of the cattle industry and we continue to select for the traits that have made her irreplaceable: udder & hoof quality, fleshing ability, mothering instinct, fertility and milk production. These are the Cattlemen's kind.





# BULL POWER

**FLEURY**   
**CATTLE COMPANY**

He is a straight Canadian bred bull that has highly influenced Fleury Cattle Company's program. Double AA 50'08 carries excellent bone, lots of mass and muscle, and has a picture perfect foot. RCE 50'08 is a bull that has been admired by many commercial bull buyers, breeders, and international guests. Double AA Bardolene 50'08's progeny are very stylish and he continuously stamps his calves. Sons and daughters have been sold throughout Canada and the USA and have been a big influence on these programs. The ANNIE K cow family is highly regarded within the Angus industry, excelling in numerous purebred operations; 50'08's pedigree has some of the most influential ANNIE K cow's that have ever existed. 50U's dam, DOUBLE AA ANNIE K 280'96, is a very recognized cow in the Angus business. This cow produced many successful herd bulls for Double AA Angus and is the grandmother to the well known Double AA Old Post bull. We really feel we have something special and unique. We are excited about the progeny off of 50U and feel they are the type of cattle that the industry demands.



This strong herd bull was discovered in the spring of 2007. Double AA Blackman 414'06 was our pick of the Dillabough's 2007 yearling bull pen. We bought half interest in this bull at the Rancher's Choice sale in Medicine Hat. This bull has sure proven himself, producing many females retained in the herd. The Blackman 414'06 sons have worked well for the commercial cattlemen, leaving calves that have extra growth and performance. This bull has an 80 lbs birth weight, 708 lbs weaning weight, and a 1411 lbs yearling weight. The numbers are right, his daughters are producers, and his sons are simply good. He has great ultrasound data with AAA marbling, 13.35"² REA. We are proud to have this bull working in our herd, and are sure his sons will impress you.

Saskalta Bandolier 40W was selected out of the Saskalta Farms program the spring of 2010. This bull was selected on his out-cross pedigree, big hip, and overall natural thickness. Saskalta Bandolier 40W will be used on our Double AA Blackman 414'06 and Double AA Bardolene 50'08 daughters, as I feel these types of cattle will complement each other. 40W is an extremely easy fleshing bull with a picture perfect foot and great disposition. The sons on offer sired by Saskalta Bandolier 40W are very easy fleshing, stout, and carry lots of lower quarter and scrotal. Saskalta Bandolier 40W is co-owned with Saskalta Farms and Double AA Angus.



Angus Acres Winston 249B was purchased by Dillabough Bros, Kim Robertson, and Johnston Brothers as a two-year-old bull from Angus Acres. Angus Acres 249B was admired for his length of body, style, and overall correctness. Angus Acres Winston 249B has proven himself as being a bull that sires model females for the industry. FTB 249B's mature weight was 2650lbs. He was extremely good footed and offers calving ease. We thought it was fitting to breed our heifers in 2011 to Angus Acres Winston 249B. As a result, he has left us many respectable females and sons that will breed top replacement females and calves with that extra length.

Bardolene Of Old Post 5 was a bull purchased by Double AA Angus from the Peak Dot Ranch. Bardolene Of Old Post 5 wrote history both in the show ring and in test stations. This bull had tremendous muscle expression and thickness and was the foundation of the Bardolene line for Double AA Angus. Bardolene Of Old Post 5 is an absolute legend in the Angus breed and has worked well for us at Fleury Cattle Co.





Double AA Bardolene 285'06 was purchased by D.R. Land & Cattle Ltd. RCE 285S was appreciated for his length of body, overall smoothness, and picture perfect foot. Double AA Bardolene 285'06 has a great disposition and offers calving ease.

Ranchers Choice Bardolier 161X was the high selling bull in the Ranchers Choice 2011 sale from Saskalta Angus. This bull was admired for his length, growth, and performance while still offering calving ease. BTR 161X's sons are stamped very similarly and will work well on heifers by maximizing performance. Ranchers Choice Bardolier 161X is now owned by Century Cattle Co., in Ririe Idaho.

Johnston Bandolier 170F was owned by Fertile Valley, Dennis Johnston, and Isaac A Schellenberg. This bull was known for his thickness, big hip, and overall good disposition. DJ 170F's offspring are very easy doing and are loaded with performance. Sons sired by Johnston Bandolier 170F have topped test stations and the females are nice uddered and easy fleshing. If you are looking for a bull that will sire with that added performance, we strongly recommend a son of Johnston Bandolier 170F.

RNRF Bandolier 805Y is an extremely long-bodied, heavy-boned bull, who is out of a top cow Double AA Annie K 813'06. This bull was discovered at the Flice's bull sale in 2012 and was a standout in our eyes. RNRF Bandolier 805Y is sired by the well-known Double AA Bardolier 47'06: a sire that has had a large impact on many breeding programs. We feel RNRF 805Y is the type of bull the industry demands and are extremely excited about what he has to offer for our breeding program. RNRF Bandolier 805Y is co-owned with Saskalta Farms and Double AA Angus.

# NEW HERD SIRES WATCH IN 2014



**BANDOLIER 805Y**



**TOM BOY 14Y**

In the spring of 2012, we toured the Sealin Creek cow herd from Monte Lake BC. We were impressed with the group of cattle that Sealin creek had to offer and felt it was suiting to invest in some of their genetics. When touring their program we were impressed by the udders, feet, and the breeding program behind the cow herd. When Sealin Creek Tom Boy 14Y was spotted we were immediately sold on the bull. Sealin Creek Eline 64N, PAK 14Y's dam, is a top producing cow with lots of length of body, power, and has a gorgeous udder. Sealin Creek Tom Boy 14Y was the champion Angus bull at the Williams Lake Bull sale, and caught the attention of many cattlemen. Sealin Creek Tom Boy 14Y left his mark on the Williams Lake Bull Sale by setting sale records, which generated a lot of interest. PAK 14Y comes from a program where structurally sound and good-footed cattle are emphasized; these cattle are expected to cover a lot of distance grazing the mountain pastures. This bull comes from a very similar breeding program as ours and we are very excited to incorporate this addition into our cow herd. Sealin Creek Tom Boy 14Y is co-owned with Saskalta Farms.





Maternal brother to Lot 49  
sold to Fred & Rebecca Sanders



## FLEURY BARDOLENE 44Z

1681520 | FAR 44Z | 14/02/2012

DOUBLE AA BARDOLENE 47'04  
DOUBLE AA BARDOLENE 50'08  
DOUBLE AA ANNIE K 280'96

CC 170F 19K  
CC MISS ROYCE 2M  
VALLEYHILLS BLACKCAP 20K

CALVING EASE	BW	ADJ WW	ADJ YW	BW	WW	YW	M	TM	CE	MCE
★ ★	89	638	1126	2.0	26	48	8	21	3.0	4.0

- FAR 44Z has always stood out as a long-bodied, heavy muscled bull with lots of depth.
- CC Miss Royce 2M has been a strong producing cow, raising numerous replacement heifers and bulls sold to PFRA and Fred and Rebecca Sanders.



## FLEURY BARDOLENE 50Z

1681525 | FAR 50Z | 15/02/2012

DOUBLE AA BARDOLENE 47'04  
DOUBLE AA BARDOLENE 50'08  
DOUBLE AA ANNIE K 280'96

DOUBLE AA RITO 21'03  
DOUBLE AA ANNIE K 36'06  
DOUBLE AA ANNIE K 7360'02

CALVING EASE	BW	ADJ WW	ADJ YW	BW	WW	YW	M	TM	CE	MCE
★	97	620	1100	5.6	33	59	7	24	-2.0	1.0

- Fleury Bardolene 50Z is a stout, stylish, smooth-made bull.
- Double AA Annie K 36'06, FAR 50Z's dam, has proven herself to be a top producing female.
- In last year's sale, a full brother to FAR 50Z was sold to KBJ Angus.



Full brother to Lot 50  
sold to KBJ Round Farms





51

## FLEURY BARDOLENE 63Z

1681529 | FAR 63Z | 18/02/2012

DOUBLE AA BARDOLENE 47'04  
DOUBLE AA BARDOLENE 50'08  
DOUBLE AA ANNIE K 280'96

SASKALTA BARDOLENE 28M  
DOUBLE AA ANNIE K 53'06  
DOUBLE AA ANNIE K 302'02

CALVING EASE	BW	ADJ WW	ADJ YW	BW	WW	YW	M	TM	CE	MCE
★	96	758	1201	4.1	38	61	14	33	-1.0	3.0

- Here is a real stand-out, straight Canadian 50'08 son; Fleury Bardolene 63Z will turn some heads on sale day.
- FAR 63Z is one of the widest-based bulls in the pen, with lots of muscle expression and balance throughout.
- Fleury Bardolene 63Z has the capabilities of taking any commercial or pure-bred herd to the next level.
- His dam, Double AA Annie K 53'06, offers a lot of predictability and has produced a top female sold to Richard Sverdahl and the lead-off bull in our 2011 sale.



*Full brother to Lot 51 sold to  
Quill Lake Farming Co Ltd.*



52

## FLEURY BARDOLENE 66Z

1681766 | FAR 66Z | 20/02/2012

DOUBLE AA BARDOLENE 47'04  
DOUBLE AA BARDOLENE 50'08  
DOUBLE AA ANNIE K 280'96

DOUBLE AA BLACKMAN 80'04  
DOUBLE AA ANNIE K 324'06  
DOUBLE AA ANNIE K 682'99

CALVING EASE	BW	ADJ WW	ADJ YW	BW	WW	YW	M	TM	CE	MCE
★	102	755	1230	4.9	38	61	11	30	-3.0	1.0

- Fleury Bardolene 66Z is one of the longest bulls in our pen, who offers a lot of performance and frame.
- FAR 66Z has been a stand-out since a calf, and is a bull that will sire steers that will punch the scale down.
- Double AA Annie K 324'06, FAR 66Z's dam, is a nice uddered female, who produced a son sold in last year's sale to Davies Livestock.







**53**

## FLEURY BARDOLENE 41Z

1681519 | FAR 41Z | 13/02/2012

DOUBLE AA BARDOLENE 47'04  
DOUBLE AA BARDOLENE 50'08  
DOUBLE AA ANNIE K 280'96

LOMA LANES CRACKER JACK 51J  
FLEURY LADY LASS 64S  
SASKALTA LASS 755J

CALVING EASE	BW	ADJ WW	ADJ YW	BW	WW	YW	M	TM	CE	MCE
★	97	590	1079	4.3	26	48	3	16	-1.0	1.0

- Fleury Bardolene 41Z is a stout, stylish, deep-bodied bull.
- A maternal brother to FAR 41Z was purchased by Western Beef Development Centre.

**54**

## FLEURY BARDOLENE 49Z

1681527 | FAR 49Z | 15/02/2012

DOUBLE AA BARDOLENE 47'04  
DOUBLE AA BARDOLENE 50'08  
DOUBLE AA ANNIE K 280'96

DOUBLE AA BLACKMAN 548'05  
MILL IRON ANNIE 817'08  
DOUBLE AA ANNIE K 591'00

CALVING EASE	BW	ADJ WW	ADJ YW	BW	WW	YW	M	TM	CE	MCE
★	96	661	1032	4.8	29	51	9	24	-1.0	3.0

- Fleury Bardolene 49Z is an extremely thick, easy-fleshing, moderate-framed bull.
- ZMR 817U, FAR 49Z's dam, is a moderate-framed female, who produced a son sold to Murray Stadnyk.
- FAR 49Z is a well-balanced bull, who is backed by a nice uddered cow family.

**55**

## FLEURY BARDOLENE 31Z

1681511 | FAR 31Z | 11/02/2012

DOUBLE AA BARDOLENE 47'04  
DOUBLE AA BARDOLENE 50'08  
DOUBLE AA ANNIE K 280'96

EASTONDALE ALLIANCE 57'04  
FLEURY BONNIE 6T  
HALCYON BONNIE ERICA 968

CALVING EASE	BW	ADJ WW	ADJ YW	BW	WW	YW	M	TM	CE	MCE
★	90	612	1107	2.5	23	48	9	21	4.0	5.0

- Fleury Bardolene 31Z is a thick, square-hipped bull with heavy muscle expression.
- FAR 31Z's dam, Fleury Bonnie 6T, is a nice uddered cow, who has been admired by many visitors.

**56**

## FLEURY BARDOLENE 35Z

1681517 | FAR 35Z | 12/02/2012

DOUBLE AA BARDOLENE 47'04  
DOUBLE AA BARDOLENE 50'08  
DOUBLE AA ANNIE K 280'96

JOHNSTON BANDOLIER 170F  
FLEURY ANNIE K 22T  
DOUBLE AA ELENA 38'02

CALVING EASE	BW	ADJ WW	ADJ YW	BW	WW	YW	M	TM	CE	MCE
★	99	665	1109	4.0	31	56	4	20	0.0	2.0

- Fleury Bardolene 35Z is a high-performing, heavy-muscled bull with lots of length.
- Commercial cattlemen, this is your kind of bull.
- FAR 35Z goes back to one of our top maternal cow families and offers some predictable genetics.



**57****FLEURY BARDOLENE 29Z**

1681760 | FAR 29Z | 11/02/2012

DOUBLE AA BARDOLENE 47'04  
 DOUBLE AA BARDOLENE 50'08  
 DOUBLE AA ANNIE K 280'96

DOUBLE AA RITO 21'03  
 DOUBLE AA AMBER 292'06  
 DOUBLE AA AMBER 683'03

CALVING EASE	BW	ADJ WW	ADJ YW	BW	WW	YW	M	TM	CE	MCE
★	95	615	1042	4.8	31	59	3	19	0.0	2.0

- FAR 29Z is a moderate-framed, easy-fleshing, stout bull.
- FAR 29Z's dam, Double AA Amber 22'06, has been a strong producing cow, producing numerous females retained in our herd and two sons, who were sold to Western Beef Development Centre.



*Maternal brother to Lot 57  
 sold to Western Beef Development Center*

**58****FLEURY BARDOLENE 52Z**

1681524 | FAR | 15/02/2012

DOUBLE AA BARDOLENE 47'04  
 DOUBLE AA BARDOLENE 50'08  
 DOUBLE AA ANNIE K 280'96

JOHNSTON BANDOLIER 170F  
 CC MISS 170 UNIVERSE 73P  
 VALLEYHILLS BLACKCAP 73K

CALVING EASE	BW	ADJ WW	ADJ YW	BW	WW	YW	M	TM	CE	MCE
★	92	600	1141	3.6	34	62	6	23	2.0	3.0

- Fleury Bardolene 52Z is a long-sided bull with lots of bone.
- FAR 52Z is a power bull offering lots of performance.
- FAR 52Z's dam, CC Miss 170 Universe 73P, is a stylish female who has an exceptional udder and has produced numerous females in our herd.

**60****FLEURY BARDOLENE 56Z**

1681762 | FAR 56Z | 16/02/2012

DOUBLE AA BARDOLENE 47'04  
 DOUBLE AA BARDOLENE 50'08  
 DOUBLE AA ANNIE K 280'96

DOUBLE AA BARDOLIER 558'03  
 DOUBLE AA ANNIE K 550'06  
 DOUBLE AA ANNIE K 64'94

CALVING EASE	BW	ADJ WW	ADJ YW	BW	WW	YW	M	TM	CE	MCE
★★	85	593	1016	2.6	24	45	10	22	3.0	4.0

- Fleury Bardolene 56Z is a moderate-framed, easy-fleshing, thick-made bull.
- A maternal brother to FAR 56Z sold to PFRA.
- FAR 56Z will add width, hind quarter, and muscling to your program.

**59****FLEURY BARDOLENE 54Z**

1681523 | FAR 54Z | 15/02/2012

DOUBLE AA BARDOLENE 47'04  
 DOUBLE AA BARDOLENE 50'08  
 DOUBLE AA ANNIE K 280'96

DOUBLE AA BARDOLIER 550'00  
 DOUBLE AA ANNIE K 359'03  
 DOUBLE AA ANNIE K 211'99

CALVING EASE	BW	ADJ WW	ADJ YW	BW	WW	YW	M	TM	CE	MCE
★★	83	629	1058	2.2	23	43	6	18	4.0	5.0

- FAR 54Z is a stylish, moderately framed bull with lots of thickness, depth, and hip.
- Double AA Annie K 359'03, FAR 54Z's dam, is a moderately framed, thick cow who has produced several replacement females and sons sold to Edward Wilson and R & F Livestock.







61

## FLEURY BARDOLENE 68Z

TWIN | 1681764 | FAR 68Z | 20/02/2012

DOUBLE AA BARDOLENE 47'04  
DOUBLE AA BARDOLENE 50'08  
DOUBLE AA ANNIE K 280'96

DOUBLE AA BLACKMAN 205'04  
DOUBLE AA ELENA 50'06  
DOUBLE AA ELENA 300'02

CALVING EASE	BW	ADJ WW	ADJ YW	BW	WW	YW	M	TM	CE	MCE
★ ★	79	658	1083	2.3	34	55	11	27	4.0	5.5

- Fleury Bardolene 68Z is another stout calf with lots of hair, shape, and depth.
- FAR 68Z's dam, Double AA Elena 50'06, has produced three top females working in our herd today.
- FAR 68Z excels in maternal traits.



62

## FLEURY BARDOLENE 108Z

1681771 | FAR 108Z | 09/03/2012

DOUBLE AA BARDOLENE 47'04  
DOUBLE AA BARDOLENE 50'08  
DOUBLE AA ANNIE K 280'96

PEAK DOT NEW TREND 42M  
DOUBLE AA ANNIE K 393'06  
DOUBLE AA ANNIE K 684'99

CALVING EASE	BW	ADJ WW	ADJ YW	BW	WW	YW	M	TM	CE	MCE
★ ★	82	671	1215	3.8	35	70	10	28	4.0	5.0

- Fleury Bardolene 108Z is a clean-fronted, wide-muzzled, hard-muscled bull.
- FAR 108Z's dam has produced females retained in our cow herd and a son sold to Shaun and Tammy Kuryluk.



63

## FLEURY BARDOLENE 115Z

1681555 | FAR 115Z | 11/03/2012

DOUBLE AA BARDOLENE 47'04  
DOUBLE AA BARDOLENE 50'08  
DOUBLE AA ANNIE K 280'96

DOUBLE AA BARDOLIER 322'03  
DOUBLE AA ANNIE K 460'06  
DOUBLE AA ANNIE K 568'00

CALVING EASE	BW	ADJ WW	ADJ YW	BW	WW	YW	M	TM	CE	MCE
★ ★	86	604	1048	2.9	28	57	9	23	4.0	5.0

- Fleury Bardolene 115Z is a moderately framed, hard-muscled bull with lots of eye-appeal.
- FAR 115Z is one of the youngest bulls that we have on offer on sale day, and we feel that he may be a sale sleeper.
- Double AA Annie K 460'06, FAR 115Z's dam, has been a productive female for us, producing sons sold to Edward Wilson and R & F Livestock.



64

## FLEURY BARDOLENE 119Z

1681560 | FAR 119Z | 12/03/2012

DOUBLE AA BARDOLENE 47'04  
DOUBLE AA BARDOLENE 50'08  
DOUBLE AA ANNIE K 280'96

DOUBLE AA BLACKMAN 414'06  
FLEURY BLACKLASS 35U  
DOUBLE D BLACKLASS 6M

CALVING EASE	BW	ADJ WW	ADJ YW	BW	WW	YW	M	TM	CE	MCE
★	90	642	1125	4.0	30	56	11	26	2.0	5.0

- Fleury Bardolene 119Z is a middle of March bull that has lots of thickness, hair, hindquarter and muscling.
- This bull was easy to spot as a calf and is admired for his ruggedness and growth.





65

## FLEURY BARDOLENE 99Z

1681541 | FAR 99Z | 02/03/2012

DOUBLE AA BARDOLENE 47'04  
DOUBLE AA BARDOLENE 50'08  
DOUBLE AA ANNIE K 280'96

DOUBLE AA BLACKMAN 414'06  
FLEURY BLACKCAP 1U  
VALLEYHILLS BLACKCAP 20K

CALVING EASE	BW	ADJ WW	ADJ YW	BW	WW	YW	M	TM	CE	MCE
★	104	672	1160	5.1	29	52	9	24	-4.0	1.0

- Fleury Bardolene 99Z offers plenty of performance, length, hair, and bone.
- Commercial cattlemen look here; this bull will produce top steer calves and, with the cow family behind him, his females will impress you.



66

## FLEURY BARDOLENE 120Z

1681772 | FAR 120Z | 13/03/2012

DOUBLE AA BARDOLENE 47'04  
DOUBLE AA BARDOLENE 50'08  
DOUBLE AA ANNIE K 280'96

PEAK DOT NEW TREND 42M  
DOUBLE AA ANNIE K 580'06  
DOUBLE AA ANNIE K 533'94

CALVING EASE	BW	ADJ WW	ADJ YW	BW	WW	YW	M	TM	CE	MCE
★★	84	719	1139	2.3	38	69	12	31	5.0	7.0

- FAR 120Z is a stylish, hard-muscled bull with lots of hair and scrotal.
- Fleury Bardolene 120Z is an exact replica of his sire.
- FAR 120Z has been noticed ever since he was a calf, and we feel he is one of the top 50'08 sons on offer this year.
- Double AA Annie K 580'06, FAR 120's dam, is a model cow for the Angus breed.







**67**

## FLEURY OLD POST 62Z

1681530 | FAR 62Z | 18/02/2012

BONNIE CHANCE BARDOLENE 10A  
BARDOLENE OF OLD POST 5  
BAMBI OF OLD POST

PEAK DOT NEW TREND 42M  
DOUBLE AA PRINCESS 96'06  
DOUBLE AA PRINCESS 403'03

CALVING EASE	BW	ADJ WW	ADJ YW	BW	WW	YW	M	TM	CE	MCE
★	95	672	1195	2.8	17	34	12	21	1.0	4.0

- FAR 62Z is a stout bull, with lots of hair and bone.
- This bull has loads of width, muscle, and is extremely heavy-quartered.
- Bardolene Of Old Post 5, the sire of FAR 62Z, played an integral role in building the Annie K cow herd.
- FAR 62Z's dam, Double AA Princess 96'06, has been a top producing cow in our cow herd, producing top sons selling to Ron Winder, Harvey Mills, and Carter Cattle Co.



*Maternal brother to Lot 67 sold to  
Ron Winder & Harvey Mills*



*Maternal brother to Lot 67 sold to  
Carter Cattle Co.*



**68**

## FLEURY BARDOLENE 96Z

1681769 | FAR 96Z | 02/03/2012

DOUBLE AA BARDOLENE 333'03  
DOUBLE AA BARDOLENE 285'06  
DOUBLE AA ANNIE K 580'03

DOUBLE AA BLACKMAN 333'04  
DOUBLE AA ANNIE K 213'06  
DOUBLE AA ANNIE K 586'02

CALVING EASE	BW	ADJ WW	ADJ YW	BW	WW	YW	M	TM	CE	MCE
★★★	77	688	1047	0.8	30	52	13	28	5.0	7.0

- Fleury Bardolene 96Z is a smooth-shouldered bull, and we believe that he will offer you calving ease.
- Double AA Bardolene 285'06, FAR 96Z's sire, had a picture perfect foot and great disposition.
- FAR 96Z's dam, RCE 213S, offers performance and would be one of our larger framed cows.



**69**

## FLEURY BARDOLENE 78Z

1681534 | FAR 78Z | 24/02/2012

DOUBLE AA BARDOLENE 333'03  
DOUBLE AA BARDOLENE 285'06  
DOUBLE AA ANNIE K 580'03

DOUBLE AA BLACKMAN 292'01  
DOUBLE AA ANNIE K 665'05  
DOUBLE AA ANNIE K 638'97

CALVING EASE	BW	ADJ WW	ADJ YW	BW	WW	YW	M	TM	CE	MCE
★	92	694	1028	3.5	27	43	11	25	-1.0	3.0

- Here is another Bardolene son, FAR 78Z is clean-fronted and long-bodied.
- Double AA Annie K 665'05, FAR 78Z's dam, is a moderately framed, tight-uddered female, who raised a son purchased by Bruce Neudorf.





70

## DOUBLE AA BARDOLIER 45Z

1707964 | RCE 45Z | 14/02/2012

FLEURY ROCK SOLID 63S  
SASKALTA BANDOLIER 40W  
SASKALTA BLACKBIRD 103L

DOUBLE AA BARDOLIER 47'06  
DOUBLE AA ANNIE K 83'08  
DOUBLE AA ANNIE K 26'06

CALVING EASE	BW	SEPT 24	JAN 24	BW	WW	YW	M	TM	CE	MCE
★	91	748	1111	-	-	-	-	-	-	-

- RCE 45Z is a stout bull with lots of depth and muscle.
- Double AA Bardolier 45Z's dam, Double AA Annie K 83'08, produced the high selling bull in last year's sale, who was sold to Saskalta Farms.
- RCE 45Z's dam, RCE 83'08, is a real deep sided female and is one of the top udder females in our program.
- RCE 45Z is an extremely easy-fleshing power bull.



71

## DOUBLE AA BARDOLIER 43Z

1707963 | RCE 43Z | 14/02/2012

FLEURY ROCK SOLID 63S  
SASKALTA BANDOLIER 40W  
SASKALTA BLACKBIRD 103L

DOUBLE AA BARDOLINE 47'04  
DOUBLE AA ANNIE K 74'08  
DOUBLE AA ANNIE K 402'05

CALVING EASE	BW	SEPT 24	JAN 24	BW	WW	YW	M	TM	CE	MCE
★	89	715	1074	-	-	-	-	-	-	-

- RCE 43Z is an extremely thick, big-hipped, heavy-muscled, easy-fleshing bull.
- RCE 43Z's sire, Saskalta Bandolier 40W, will add that easy fleshing ability and muscle into your program.
- Double AA Bandolier 43Z's dam, RCE 74U, has produced some strong females, working in our program today.







72

## FLEURY BANDOLIER 13Z

1712258 | FAR 13Z | 03/02/2012

FLEURY ROCK SOLID 63S  
SASKALTA BANDOLIER 40W  
SASKALTA BLACKBIRD 103L

BLACK WHEEL KRYPTONITE 41P  
FLEURY BLACKCAP 63W  
FLEURY BLACKCAP 3P

CALVING EASE	BW	ADJ WW	ADJ YW	BW	WW	YW	M	TM	CE	MCE
★	99	652	1145	4.2	34	62	9	26	-2.0	1.0

- Fleury Bandolier 13Z is a thick-topped, long-spined bull offering lots of growth and natural muscle expression.
- FAR 13Z is another Bandolier 40W son who offers easy-fleshing, high-performing genetics.



73

## FLEURY BANDOLIER 26Z

1681757 | FAR 26Z | 09/02/2012

FLEURY ROCK SOLID 63S  
SASKALTA BANDOLIER 40W  
SASKALTA BLACKBIRD 103L

SASKALTA BARDOLINE 28M  
DOUBLE AA ANNIE K 31'06  
DOUBLE AA ANNIE K 318'02

CALVING EASE	BW	ADJ WW	ADJ YW	BW	WW	YW	M	TM	CE	MCE
★	97	776	1156	4.4	43	65	18	40	-3.0	0.0

- Fleury Bandolier 26Z is a high-performing, long-bodied bull with lots of scrotal.
- FAR 26Z has always portrayed a great disposition, and will add length and performance into your breeding program.
- FAR 26Z is a bull I highly recommend for any program wanting to excel in weight.



74

## FLEURY BANDOLIER 60Z

1681763 | FAR 60Z | 18/02/2012

FLEURY ROCK SOLID 63S  
SASKALTA BANDOLIER 40W  
SASKALTA BLACKBIRD 103L

DOUBLE AA BARDOLIER 322'03  
DOUBLE AA ANNIE K 231'06  
DOUBLE AA ANNIE K 642'02

CALVING EASE	BW	ADJ WW	ADJ YW	BW	WW	YW	M	TM	CE	MCE
★	89	664	1098	3.1	32	59	10	26	1.0	2.0

- This bull is one of the stouter calves in the bull sale offering.
- He portrays tremendous thickness and natural muscling.
- Double AA Annie K 231'06, FAR 60Z's dam, and Saskalta Bandolier 40W, FAR 60Z's sire, are easy doing genetics through and through.



75

## FLEURY BANDOLIER 103Z

1681545 | FAR 103Z | 06/03/2012

FLEURY ROCK SOLID 63S  
SASKALTA BANDOLIER 40W  
SASKALTA BLACKBIRD 103L

DOUBLE AA BARDOLIER 47'06  
FLEURY ANNIE K 098W  
DOUBLE AA ANNIE K 450'06

CALVING EASE	BW	ADJ WW	ADJ YW	BW	WW	YW	M	TM	CE	MCE
★	96	700	1068	6.3	39	72	13	33	-6.0	-1.0

- FAR 103Z is an easy-fleshing bull, with lots of thickness and hind quarter.
- FAR 103Z's dam, Fleury Annie K 098W, is a long-sided female, with an ideal udder.





Maternal brother to Lot 76 sold to  
Matador Pasture Co-op Ltd.



76

## FLEURY BANDOLIER 59Z

1690191 | FAR 59Z | 18/02/2012

BROOKSIDE BANDOLIER 12U  
JOHNSTON BANDOLIER 170F  
JOHNSTON MAX TRADITION 370A

SASKALTA BARDOLENE 28M  
DOUBLE AA ANNIE K 90'06  
DOUBLE AA ANNIE K 433'02

CALVING EASE	BW	ADJ WW	ADJ YW	BW	WW	YW	M	TM	CE	MCE
★	98	755	1146	4.5	39	66	6	26	-3.0	-1.0

- Fleury Bandolier 59Z is a loose-hided, performance bull that mirrors his sire's make-up.
- This bull excels in growth, and will add frame to your calves.
- Double AA Annie K 90'06, FAR 59Z's dam, is a predictable cow, raising numerous females in our herd and sons sold to Matador Pasture Co-op Ltd. and Dan Clark.



77

## FLEURY UPWARD 1Z

1681744 | FAR 1Z | 03/01/2012

CONNEALY ONWARD  
SITZ UPWARD 307R  
SITZ HENRIETTA PRIDE 81M

CUDLOBE MILLENNIUM 6M  
J P D BLACKCAP 5R  
J P D BLACKCAP 10M

CALVING EASE	BW	ADJ WW	ADJ YW	BW	WW	YW	M	TM	CE	MCE
★	92	726	1203	3.9	62	113	27	58	1.0	5.0

- Fleury Upward 1Z is a long-sided, smooth-made bull, full of performance.
- J P D Blackcap 5R, FAR 1Z's dam, has been designated as an elite cow through the Canadian Angus Association.
- J P D Blackcap 5R was purchased the fall of 2011 from Domaine Trevallon, from Quebec.
- FAR 1Z will add performance to your program, and has some remarkable females in his pedigree.



78

## FLEURY WINSTON 4Z

1681745 | FAR 4Z | 28/01/2012

ANGUS ACRES WINSTON 198X  
ANGUS ACRES WINSTON 249B  
ANGUS ACRES LADY ALLEGRA 58U

MILL IRON BLACKJACK 727'07  
FLEURY HEROINE 54X  
DOUBLE D HEROINE 14P

CALVING EASE	BW	ADJ WW	ADJ YW	BW	WW	YW	M	TM	CE	MCE
★★★	78	647	1180	1.9	33	59	15	32	5.0	6.0

- FAR 4Z is a long-bodied, smooth-made bull with lots of balance.
- Fleury Winston 4Z is out of a first calf heifer and offers calving ease.



79

## FLEURY WINSTON 7Z

1681746 | FAR 7Z | 30/01/2012

ANGUS ACRES WINSTON 198X  
ANGUS ACRES WINSTON 249B  
ANGUS ACRES LADY ALLEGRA 58U

FLEURY ROPER 15T  
FLEURY ELENA 3X  
FLEURY ELENA 9U

CALVING EASE	BW	ADJ WW	ADJ YW	BW	WW	YW	M	TM	CE	MCE
★★★	76	674	1122	1.5	39	64	13	33	6.0	7.0

- FAR 7Z is a smooth-made bull with lots of length of body.
- This bull offers calving ease, with only a 76 lbs birth weight out of a first calf heifer.
- FAR 7Z's dam, Fleury Elena 3X, is a moderate framed female with an ideal udder.



80

## FLEURY WINSTON 8Z

1681747 | FAR 8Z | 31/01/2012

ANGUS ACRES WINSTON 198X  
ANGUS ACRES WINSTON 249B  
ANGUS ACRES LADY ALLEGRA 58U

MILL IRON BLACKJACK 727'07  
FLEURY PRINCESS 105X  
FLEURY PRINCESS 24T

CALVING EASE	BW	ADJ WW	ADJ YW	BW	WW	YW	M	TM	CE	MCE
★★★	79	649	1067	2.4	36	63	12	30	4.0	4.0

- Fleury Winston 8Z is a moderate-framed, clean-fronted, calving-ease bull.
- FAR 8Z is out of a first calf heifer and is recommended as a heifer bull.



81

## FLEURY WINSTON 9Z

1712257 | FAR 9Z | 01/02/2012

ANGUS ACRES WINSTON 198X  
ANGUS ACRES WINSTON 249B  
ANGUS ACRES LADY ALLEGRA 58U

FLEURY ROPER 15T  
FLEURY ANNIE K 5X  
FLEURY ANNIE K 17U

CALVING EASE	BW	ADJ WW	ADJ YW	BW	WW	YW	M	TM	CE	MCE
★★★	77	652	1108	3.6	38	65	14	33	2.0	4.0

- FAR 9Z is a moderately framed bull who offers calving ease.
- Fleury Winston 9Z was out of a first calf heifer, FAR 5X, a well-balanced, tight uddered female.





82

## FLEURY WINSTON 10Z

1681750 | FAR 10Z | 03/02/2012

ANGUS ACRES WINSTON 198X  
ANGUS ACRES WINSTON 249B  
ANGUS ACRES LADY ALLEGRA 58U

DOUBLE AA BLACKMAN 414'06  
FLEURY BLACKCAP 40X  
FLEURY BLACKCAP 53N

CALVING EASE	BW	ADJ WW	ADJ YW	BW	WW	YW	M	T/M	CE	MCE
★ ★	84	713	1183	3.7	35	61	16	34	1.0	5.0

- Fleury Winston 10Z is a long-bodied, smooth-made, clean-fronted calving-ease bull.
- FAR 10Z is out of a first calf heifer, FAR 40X, and would work well on heifers.

83

## FLEURY WINSTON 11Z

1681748 | FAR 11Z | 03/02/2012

ANGUS ACRES WINSTON 198X  
ANGUS ACRES WINSTON 249B  
ANGUS ACRES LADY ALLEGRA 58U

FLEURY ROPER 15T  
FLEURY BLACKCAP 1X  
FLEURY BLACKCAP 10U

CALVING EASE	BW	ADJ WW	ADJ YW	BW	WW	YW	M	T/M	CE	MCE
★	98	742	1179	7.0	42	71	16	37	-7.0	0.0

- Fleury Winston 11Z is a larger-framed bull with lots of length and performance.
- Fleury Blackcap 1X, FAR 11Z's dam, is a feminine, long-sided cow with a nice udder.

84

## FLEURY WINSTON 15Z

1681752 | FAR 15Z | 05/02/2012

ANGUS ACRES WINSTON 198X  
ANGUS ACRES WINSTON 249B  
ANGUS ACRES LADY ALLEGRA 58U

MILL IRON BLACKJACK 727'07  
FLEURY ANNIE K 89X  
DOUBLE AA ANNIE K 324'06

CALVING EASE	BW	ADJ WW	ADJ YW	BW	WW	YW	M	T/M	CE	MCE
★ ★ ★	82	654	1078	3.8	36	60	15	33	0.0	3.0

- FAR 15Z is a calving-ease bull, who is smooth-made and long-bodied.
- FAR 15Z's sire, Angus Acres Winston 249B, offers calving ease and is a strong maternal bred bull.







Maternal brother to Lot 88 sold Rick & Ruby Flicek



Maternal brother to Lot 88 sold to Carter Cattle Co.



85

## FLEURY WINSTON 20Z

1681755 | FAR 20Z | 07/02/2012

ANGUS ACRES WINSTON 198X DOUBLE AA BLACKMAN 414'06  
ANGUS ACRES WINSTON 249B FLEURY ANNIE K 74X  
ANGUS ACRES LADY ALLEGRA 58U DOUBLE AA ANNIE K 213'06

CALVING EASE	BW	ADJ WW	ADJ YW	BW	WW	YW	M	TM	CE	MCE
★	95	731	1244	5.3	36	64	16	34	-4.0	2.0

- Fleury Winston 20Z is a long-sided, deep-bodied, high-performing Angus Acres Winston 249B son.
- FAR 20Z's dam, Fleury Annie K 74X, is a moderate-framed, deep-sided Angus cow, who has proven herself at a young age by raising one of our top Winston 249B calves.



86

## FLEURY WINSTON 24Z

1681756 | FAR 24Z | 08/02/2012

ANGUS ACRES WINSTON 198X DOUBLE AA BLACKMAN 414'06  
ANGUS ACRES WINSTON 249B FLEURY RUBY 70X  
ANGUS ACRES LADY ALLEGRA 58U ELLIOTT RUBY 53 79N

CALVING EASE	BW	ADJ WW	ADJ YW	BW	WW	YW	M	TM	CE	MCE
★	92	685	1092	5.1	35	61	14	32	-3.0	1.0

- FAR 24Z is a smooth-made, clean-fronted bull with lots of length of body.
- Fleury Winston 24Z's pedigree is backed by many strong maternal cows, which will enable him to produce many respectable replacement females.



87

## FLEURY WINSTON 42Z

1713003 | FAR 42Z | 13/02/2012

ANGUS ACRES WINSTON 198X DOUBLE AA BLACKMAN 414'06  
ANGUS ACRES WINSTON 249B FLEURY PRINCESS 36X  
ANGUS ACRES LADY ALLEGRA 58U DOUBLE AA PRINCESS 51'03

CALVING EASE	BW	ADJ WW	ADJ YW	BW	WW	YW	M	TM	CE	MCE
★	94	679	1125	6.6	33	57	11	28	-7.0	-1.0

- Fleury Winston 42Z is a smooth-made, long-sided, well balanced bull.
- Angus Acres Winston 249B females are great uddered, herd-building type of females; you can't go wrong retaining females off of a 249B son.



88

## FLEURY WINSTON 74Z

1681768 | FAR 74Z | 23/02/2012

ANGUS ACRES WINSTON 198X PEAK DOT NEW TREND 42M  
ANGUS ACRES WINSTON 249B DOUBLE AA ANNIE K 558'06  
ANGUS ACRES LADY ALLEGRA 58U DOUBLE AA ANNIE K 261'98

CALVING EASE	BW	ADJ WW	ADJ YW	BW	WW	YW	M	TM	CE	MCE
★	97	662	1147	5.0	34	68	15	32	-2.0	2.0

- Fleury Winston 74Z is a bull that promotes length and is very smooth-fronted.
- FAR 74Z's dam, RCE 558S, is one of our longer, larger bodied cows.
- FAR 74Z offers predictable genetics, maternal brothers having sold to Rick Flicek and Carter Cattle Co.







## FLEURY BLACKMAN 77Z

1681535 | FAR 77Z | 24/02/2012

DOUBLE AA BLACKMAN 292'01  
DOUBLE AA BLACKMAN 414'06  
DOUBLE AA ANNIE K 27'00

BLACK WHEEL KRYPTONITE 41P  
FLEURY BLACKCAP 55S  
FLEURY BLACKCAP 53N

CALVING EASE	BW	ADJ WW	ADJ YW	BW	WW	YW	M	TM	CE	MCE
★	97	633	1137	5.4	31	57	13	29	-4.0	3.0

- Fleury Blackman 77Z is a long-bodied, stylish bull with lots of hair and muscle.
- FAR 77Z's dam, Fleury Blackcap 55S, is a moderately framed cow that has produced many females in our herd and a full brother, FAR 29U, sold to Walter Hauber.
- He is a performance bull that is recommended as a cow bull.



## FLEURY BLACKMAN 89Z

1681537 | FAR 89Z | 28/02/2012

DOUBLE AA BLACKMAN 292'01  
DOUBLE AA BLACKMAN 414'06  
DOUBLE AA ANNIE K 27'00

JOHNSTON BANDOLIER 170F  
CC MISS 170 RUBY 3P  
LJB RUBY 3J

CALVING EASE	BW	ADJ WW	ADJ YW	BW	WW	YW	M	TM	CE	MCE
★★	87	638	1046	3.5	30	55	7	22	1.0	5.0

- Fleury Blackman 89Z is a well-balanced bull with excellent muscle expression, and is a son of the known Double AA Blackman 414'06.
- The Blackman line is known for performance and excellent carcass traits.
- The Blackman sons have repeatedly worked well for our customers.



## FLEURY BLACKMAN 104Z

1681544 | FAR 104Z | 04/03/2012

DOUBLE AA BLACKMAN 292'01  
DOUBLE AA BLACKMAN 414'06  
DOUBLE AA ANNIE K 27'00

SASKALTA BLACKMAN 43J  
SASKALTA PRINCESS 213M  
SASKALTA PRINCESS 741G

CALVING EASE	BW	ADJ WW	ADJ YW	BW	WW	YW	M	TM	CE	MCE
★	97	587	1039	5.9	23	42	10	22	-6.0	1.0

- FAR 104Z is a long-bodied bull with lots of hair and style.
- FAR 104Z's dam, Saskalta Princess 213M, has produced numerous females working in our herd today and a bull sold to Teneycke Farms Inc.



## FLEURY BLACKMAN 107Z

1681768 | FAR 107Z | 23/02/2012

DOUBLE AA BLACKMAN 292'01  
DOUBLE AA BLACKMAN 414'06  
DOUBLE AA ANNIE K 27'00

JL FINAL ANSWER 07030  
FLEURY BONNIE 20W  
FLEURY BONNIE 6T

CALVING EASE	BW	ADJ WW	ADJ YW	BW	WW	YW	M	TM	CE	MCE
★★	84	678	1139	2.6	33	64	15	32	3.0	8.0

- Fleury Blackman 107Z is a moderate-framed, hard-muscled Blackman 414'06 son.
- FAR 107Z's maternal brother was sold in last year's sale to Norman and Carol Laventure.





## FLEURY BARDOLIER 91Z

160038 | FAR 91Z | 29/02/2012

DOUBLE AA BARDOLIER 217'06  
RANCHERS CHOICE BARDOLIER 161X  
SASKALTA ANNE K 202T  
DOUBLE AA BLACKMAN 414'06  
FLEURY RUBY 64X  
CC MISS 170 RUBY 3P

CALVING EASE	BW	SEPT 24	JAN 24	BW	WW	YW	M	TM	CE	MCE
★ ★ ★	82	609	960	3.0	31	54	11	27	2.0	5.0

- Fleury Bardolier 91Z is a thick-made, heavy-muscled bull, with lots of hind quarter and balance.
- FAR 91Z has lots of hair, style, and is a wide-based bull.



## FLEURY BARDOLIER 117Z

152691 | FAR 117Z | 12/03/2012

DOUBLE AA BARDOLIER 217'06  
RANCHERS CHOICE BARDOLIER 161X  
SASKALTA ANNE K 202T  
FLEURY ROPER 15T  
FLEURY ANNIE K 11X  
FLEURY ANNIE K 27U

CALVING EASE	BW	SEPT 23	JAN 24	BW	WW	YW	M	TM	CE	MCE
★ ★	88	683	1007	-	-	-	-	-	-	-

- Fleury Bardolier 117Z is full of growth, length and has lots of bone.
- Rancher's Choice Bardolier 161X, FAR 117Z's sire, is admired for his added length and performance while his calves' birth weights remain moderate.

## Notes:

## Terms and Conditions

### Terms:

The terms of the sale are cash or cheque, payable at par at the sale locations. The right of property shall not pass until after settlement has been made; no invoicing on buyers in attendance unless previous arrangements have been made. Every animal sells to the highest bidder and in cases of disputes the auctioneer's decision will be final.

Announcements from the auction block will take precedence over the printed matter in the catalogue. Current exchange rates will be announced sale day. All monies are in Canadian funds.

### Certificate of Registration:

Each animal will carry papers issued by the Canadian Angus Association. A certificate of registry duly transferred will be furnished to the buyer for each animal after payment has been made.

### Health:

All animals in the sale have met all necessary health requirements.

### Guarantee:

Each animal becomes the purchaser's risk immediately after the animal is sold. All animals in this sale will be sold under the terms and guarantees set for by the Canadian Angus Association with regard to health, freedom from defects and from both reproductive and specific genetic unsoundness.

### Liabilities:

All persons attend the sale at their own risk. The sellers, facility owner, auctioneer and sale staff assume no liability, legal or otherwise, for any accidents that occur.

### Delivery:

Every assistance will be given in getting your purchases home. Each animal becomes the risk of the purchaser as soon as sold.

### Sight Unseen Purchase Program:

For those who cannot attend, we offer a sight unseen purchase program. Call us with your needs and we will recommend suitable bulls. All bulls sold through this program do so with a satisfaction guarantee.

### Insurance:

Agents will be in attendance to insure your purchases. We strongly recommend that insurance is purchased for full value. All bulls returning back to the sellers must be insured.

### The Right to Collect Semen:

Wheeler's Stock Farm and Fleury Cattle Co. reserve the right to collect semen for within herd use on any of the bulls sold at their expense and the buyer's convenience.

### Errors:

All announcements at sale time, written or oral, supersede any written material in the catalogue.

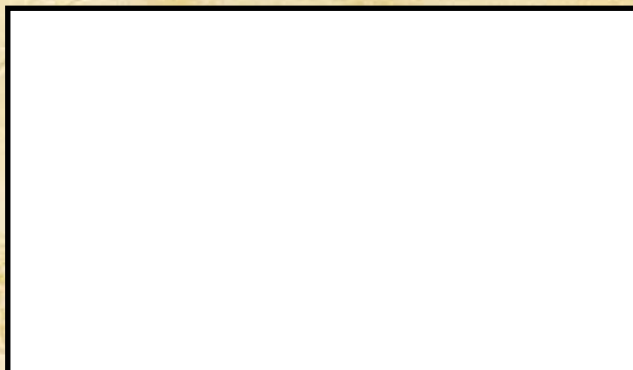
*Please bring this catalogue with you to the sale.*

*View the catalog online at:*

**LIVESTOCKXCHANGE.CA**  
Canada's premier cattle website



Return to:  
The Cattlemen's Bull Sale  
Box 284 R.R.#9  
Saskatoon, SK S7K 1P3



**SLS**  
Saskatoon Livestock Sales Ltd.

