

**19<sup>th</sup> Annual**

# **CATTLEMAN'S CONNECTION**

**Bull Sale**

**Friday, March 7, 2014**

**Heartland Livestock  
Brandon, Manitoba**



*Grant Radston*



19th Annual

# CATTLEMAN'S CONNECTION



## BLACK ANGUS BULL SALE FRIDAY, MARCH 7, 2014 - 1:00 P.M.

HEARTLAND LIVESTOCK YARDS, BRANDON, MANITOBA

STORM DATE: March 10, 2014 - listen to 880 CKLQ Radio for storm date information

SALE HEADQUARTERS: Lakeview Inn & Suites  
1880 18th Street North, Brandon, Manitoba - (204) 728-1880

*Selling:* 124 YEARLING BLACK ANGUS BULLS (All Guaranteed Breeders)

**SALE DAY PHONE: 204-727-1431**

- **WE STAND BEHIND WHAT WE SELL** - all bulls will be semen tested & breeding soundness evaluated
- **SIGHT UNSEEN PURCHASE PLAN** - your satisfaction guaranteed
- **WINTERING POLICY** - free board on bulls until April 1, 2014
- **POUNDS** - generations of bred on muscle, without sacrificing maternal traits
- **CALVING EASE** - 40% of the bulls selling are suitable for heifers
- **ALL BULLS** - carcass evaluated through ultrasound

*Join us for lunch at 11:30 am*

**AUCTIONEER:** Brent Carey  
403-549-2478 Cell: 403-650-9028

**RINGMEN:**

Mark Stock - 306-678-4811 Cell: 306-357-8104  
Scott Johnstone - 306-631-0767

**BUYERS REP:**

John Lamport 204-841-4136  
Brody Gardner Cell: 403-994-0552



**BROOKMORE PHOTOGRAPHER:**  
Grant Rolston Photography Ltd.  
403-593-2217

**LIVESTOCK INSURANCE**  
Available Sale Day



Sale Manager:

**Douglas J. Henderson  
& Associates Ltd.**

P.O. Box 5900, Lacombe, Alberta T4L 1X4  
Doug & Linda Henderson

Phone: (403) 782-3888 Fax: (403) 782-3849 Cell: (403) 350-8541  
Brody Gardner Cell: 403-994-0552  
email: djhenderson@platinum.ca www.hendersoncattle.com

## BROOKMORE =ANGUS=

**Jack & Barb Hart**

BROOKDALE, MANITOBA R0K 0G0  
(204) 476-2607 Cell: (204) 476-6696  
email: brookmoreangus@gmail.com



Barb Airey, Mgr.

**AIREY CATTLE CO.**  
**Barb & Ray Airey**

BOX 922, RIVERS, MANITOBA R0K 1X0 (204) 566-2134  
Barb Cell: (204) 761-1851 Ray Cell: (204) 724-3600  
email: rbairay@hotmail.com

# Welcome TO THE 19TH ANNUAL CATTLEMAN'S CONNECTION

## BROOKMORE —ANGUS—

**Jack & Barb Hart**  
BROOKDALE, MANITOBA R0K 0G0  
(204) 476-2607 Cell: (204) 476-6696  
email: brookmoreangus@gmail.com

Our Annual Cattleman's Connection Bull Sale has slipped around rather quickly and although there have been a few bumps in the road this year, everything will go on as usual. We have had to give some serious thought to the size of our operation and have decided to down size our herd, selling a group of cows to HBH Farms Inc. of Oak River. We are excited to have joining us in the Cattleman's Connection Sale, HBH Inc. as a guest consignor and we look forward to working with manager, Barb Airey.

We are confident that as you browse through the catalog you will find something that will suit the needs of your cattle operation. We have added three new A.I. Sire groups this year for you to consider. The sires of the bulls on offer have been selected for calving ease, performance and carcass traits. All Bulls will be scrotal measured and semen evaluated, as well as having carcass evaluation done by ultra sound prior to sale day.

All bulls sell with our personal guarantee for soundness and fertility as well as complete satisfaction to our customers. Your purchases may come back to the farm for pickup or delivery at a later date, but we recommend that if your purchases are returning to our farm that you place insurance on them. There will be an insurance rep at the sale to help you with that. If we can be of any assistance in helping you to choose the right bull for your operation please feel free to give us or any of our capable sales staff a call. The bulls will be in at the stockyards for viewing on Wednesday, March 4, or at the farm anytime before that. Just give us a call.

We hope you enjoy looking through our catalog, we feel that our bulls speak for themselves. Please join us for lunch prior to the sale at 11:30. We look forward to visiting with you on or before sale day.

At this time we would like to thank you for your continuing support.

Jack & Barb  
CATTLEMAN'S  
CONNECTION



Jack & Barb

*Brookmore Angus  
was honoured to receive  
the 2013 Manitoba Angus  
Purebred Breeder of the Year Award*



JACK & BARB HART WITH MANITOBA ANGUS DIRECTOR TIM BAKER

DJH

### Welcome to the Cattleman's Connection Bull Sale

For the last number of years the cattle produced at Brookmore have been phenomenal. Brookmore has certainly established a reputation for productive top bulls and females and further proof is here in this the 19th Annual Cattleman's Connection Bull Sale catalog.

Jack and Barb Hart's philosophy is unchanged; it is still one of producing moderate birth weight bulls, with explosive growth, muscle shape, volume and style with strong maternal traits. The Brookmore program is based on customer satisfaction, these bulls can power up any herd, commercial or purebred. Note there are a large number of these bulls whose birth weights and birth EPDs would indicate that they could be used in either the heifer or cow breeding pastures.

The Harts are pleased to have HBH as a guest consignor and as you can see they have used a great deal of Brookmore genetics. Performance and carcass numbers along with style and eye appeal, this is a fine group of bulls. Stop by Brookmore or HBH and view this powerful offering, also note they are sired by a number of new herd bulls.

Come early and study this great set of young bulls, and I am confident you will be impressed. If you can't make the sale give us a call to discuss your herd sire needs, "Our Sight Unseen Purchase Plan" is available with satisfaction guaranteed.

If Jack and Barb, Ray and Barb, John Lamport any of the sale crew or myself can be of assistance in any way please give us a call.

Yours truly,  
Doug Henderson

**Douglas J. Henderson & Associates Ltd.**

P.O. Box 5900, Lacombe, Alberta T4L 1X4 Doug & Linda Henderson  
Phone: (403) 782-3888 Fax: (403) 782-3849 Cell: (403) 350-8541

# CATTLEMAN'S CONNECTION ANGUS BULL SALE 2014



LOT 1  
BROOKMORE  
ZORZAL 48A

## 1 BROOKMORE ZORZAL 48A

MALE JVJ 48A 1752769 JANUARY 17 2013

TRES MARIAS 6301 ZORZAL  
WAF ZORZAL 321U AMF CAF NHF OSF 1485949  
TRES MARIAS 6582 CUMELLEN 5632

HARB PENDLETON 765 J H AMF CAF NHF DDF  
BROOKMORE DAISY 100X 1558361  
BROOKMORE DAISY 34U

TRES MARIAS 5887 HORNERO  
TRES MARIAS 4850 WIND EXT  
TRES MARIAS 5837 CUMELLEN  
TRES MARIAS 5632 CHAPAR 5026  
S A V FINAL ANSWER 0035 AMF CAF NHF DDF  
H A R B BLACK LADY 375 J H  
B C MATRIX 4132 AMF CAF NHF DDF  
BROOKMORE DAISY 45S

CARCASS	
MARB	5.30
BF	6.22
REA	12.50
%LMY	62.55

ACT. BW	ACT. WW	ADJ. 205	ADJ. 365	EPDS								
				BW	WW	YW	MILK	TM				
80	876	750	1397	+2.0	36%	+53	26%	+78	15%	+19	8%	+46



LOT 2 - BROOKMORE ZORZAL 57A

## 2 BROOKMORE ZORZAL 57A

MALE JVJ 57A 1752742 TWIN JANUARY 20 2013

TRES MARIAS 6301 ZORZAL  
WAF ZORZAL 321U AMF CAF NHF OSF 1485949  
TRES MARIAS 6582 CUMELLEN 5632

HARB PENDLETON 765 J H AMF CAF NHF DDF  
GREENBUSH GEORGINA 3X 1602420  
GREENBUSH GEORGINA 5U

TRES MARIAS 5887 HORNERO  
TRES MARIAS 4850 WIND EXT  
TRES MARIAS 5837 CUMELLEN  
TRES MARIAS 5632 CHAPAR 5026

S A V FINAL ANSWER 0035 AMF CAF NHF DDF  
H A R B BLACK LADY 375 J H  
S A V 004 DENSITY 4336 AMF CAF NHF DDF  
GREENBUSH GEORGINA 69M

CARCASS	
MARB	5.30
BF	9.54
REA	12.50
%LMY	59.15

ACT. BW	ACT. WW	ADJ. 205	ADJ. 365	EPDS								
				BW	WW	YW	MILK	TM				
66	742	647	1465	+2.2	P	+40	P	+63	P	+16	P	-

*Zorzal*

Outcross genetics from Argentina, bred by Tres Marias, the top Angus herd in South America, 17 times breeder of the year award winner.

Tres Marias 6301 Zorzal, the sire of Zorzal 321U, was Grand Champion Bull at Palermo, South America's biggest show in 2004 and sired the Palermo Grand Champion bulls in 2006, 2008 and 2010, and the Grand Champion Females at Palermo in 2008 and 2012.

## WAF ZORZAL 321U

**BW +3.7 WW +34 YW +43 Milk +8 TM +25 SC +0.04**

BW: 98 lbs. Adj. 205D: 771 lbs. Adj. 365D: 1309 lbs.

WAF Zorzal 321U was the high selling bull in the Remington Dispersal Sale at \$75,000 to French River Cattle Co. He sires thick-topped correct cattle with great dispositions, fertility and great hair.

**16 SONS SELL**



# CATTLEMAN'S CONNECTION ANGUS BULL SALE 2014



LOT 3 - BROOKMORE ZORZAL 95A



LOT 5 - BROOKMORE ZORZAL 107A

## 3 BROOKMORE ZORZAL 95A

MALE JVJ 95A 1765633 JANUARY 27 2013

TRES MARIAS 6301 ZORZAL  
WAF ZORZAL 321U AMF CAF NHF OSF 1485949  
TRES MARIAS 6582 CUMELLEN 5632

TRES MARIAS 5887 HORNERO  
TRES MARIAS 4850 WIND EXT  
TRES MARIAS 5837 CUMELLEN  
TRES MARIAS 5632 CHAPAR 5026

CARCASS	
MARB	5.50
BF	7.64
REA	12.44
%LMY	61.05

BUSHES GRAND DESIGN AMF CAF NHF DDF  
BROOKMORE ERICETTE 10P 1212309  
BROOKMORE ERICETTE 135M

BON VIEW NEW DESIGN 1407 AMF CAF NHF DDC  
BUSHES LADY DIVIDEND 872  
BENCHMARK MAGIC MAN 007  
MV F ERICETTE 62J

ACT. BW	ACT. WW	ADJ. 205	ADJ. 365	EPDS								
				BW	WW	YW	MILK	TM				
82	717	607	1276	+2.1	36%	+33	27%	+50	15%	+14	10%	+31

## 5 BROOKMORE ZORZAL 107A

MALE JVJ 107A 1752726 JANUARY 30 2013

TRES MARIAS 6301 ZORZAL  
WAF ZORZAL 321U AMF CAF NHF OSF 1485949  
TRES MARIAS 6582 CUMELLEN 5632

TRES MARIAS 5887 HORNERO  
TRES MARIAS 4850 WIND EXT  
TRES MARIAS 5837 CUMELLEN  
TRES MARIAS 5632 CHAPAR 5026

CARCASS	
MARB	5.30
BF	8.12
REA	14.47
%LMY	62.21

S A V BISMARCK 5682 AMF CAF NHF DDF  
BROOKMORE MAIDEN 147W 1527551  
BROOKMORE MAIDEN 156T CAF

G A R GRID MAKER AMF CAF NHF DDF  
S A V ABIGALE 0451  
S A F 598 BANDO 5175 AMF CAC DDF  
BROOKMORE MAIDEN 48M

ACT. BW	ACT. WW	ADJ. 205	ADJ. 365	EPDS								
				BW	WW	YW	MILK	TM				
90	874	762	1489	+2.8	36%	+49	27%	+75	16%	+20	9%	+45

## 4 BROOKMORE ZORZAL 104A

MALE JVJ 104A 1752551 JANUARY 28 2013

TRES MARIAS 6301 ZORZAL  
WAF ZORZAL 321U AMF CAF NHF OSF 1485949  
TRES MARIAS 6582 CUMELLEN 5632

TRES MARIAS 5887 HORNERO  
TRES MARIAS 4850 WIND EXT  
TRES MARIAS 5837 CUMELLEN  
TRES MARIAS 5632 CHAPAR 5026

CARCASS	
MARB	5.45
BF	10.54
REA	12.39
%LMY	58.04

BUSHES GRAND DESIGN AMF CAF NHF DDF  
BROOKMORE RUBY 19P 1212243  
BROOKMORE RUBY 30M

BON VIEW NEW DESIGN 1407 AMF CAF NHF DDC  
BUSHES LADY DIVIDEND 872  
V D A R LUCYS BOY AMF CAF NHF DDF  
BROOKMORE RUBY 77K

ACT. BW	ACT. WW	ADJ. 205	ADJ. 365	EPDS								
				BW	WW	YW	MILK	TM				
86	892	755	1282	+2.0	36%	+46	27%	+65	16%	+15	9%	+38

## 6 BROOKMORE ZORZAL 118A

MALE JVJ 118A 1752665 JANUARY 31 2013

TRES MARIAS 6301 ZORZAL  
WAF ZORZAL 321U AMF CAF NHF OSF 1485949  
TRES MARIAS 6582 CUMELLEN 5632

TRES MARIAS 5887 HORNERO  
TRES MARIAS 4850 WIND EXT  
TRES MARIAS 5837 CUMELLEN  
TRES MARIAS 5632 CHAPAR 5026

CARCASS	
MARB	4.75
BF	7.62
REA	12.67
%LMY	61.26

S A V NET WORTH 4200 AMF CAF NHF DDF  
BROOKMORE QUEEN 141U 1441313  
BROOKMORE QUEEN 77L

S A V 8180 TRAVELER 004 DMF DMF AMF CAF NHF OSF DDF  
S A V MAY 2410  
O G L BATTLE CRY 427 128  
BROOKMORE QUEEN 91H

ACT. BW	ACT. WW	ADJ. 205	ADJ. 365	EPDS								
				BW	WW	YW	MILK	TM				
110	785	677	1340	+7.2	36%	+36	27%	+59	16%	+19	9%	+37



LOT 4 - BROOKMORE ZORZAL 104A



LOT 5 - BROOKMORE ZORZAL 118A

# CATTLEMAN'S CONNECTION ANGUS BULL SALE 2014



LOT 7 - BROOKMORE ZORZAL 120A



LOT 8 - BROOKMORE ZORZAL 158A

## 7 BROOKMORE ZORZAL 120A

MALE JVJ 120A 1752564 FEBRUARY 01 2013

TRES MARIAS 6301 ZORZAL  
WAF ZORZAL 321U AMF CAF NHF OSF 1485949  
TRES MARIAS 6582 CUMELEN 5632

BUSHES GRAND DESIGN AMF CAF NHF DDF  
BROOKMORE ENCHANTRESS 151P 1212234  
BROOKMORE ENCHANTRESS 12M

TRES MARIAS 5887 HORNERO  
TRES MARIAS 4850 WIND EXT  
TRES MARIAS 5837 CUMELEN  
TRES MARIAS 5632 CHAPAR 5026

BON VIEW NEW DESIGN 1407 AMF CAF NHF DDC  
BUSHES LADY DIVIDEND 872  
BENCHMARK MAGIC MAN 007  
BROOKMORE ENCHANTRESS 101K

CARCASS	
MARB	4.70
BF	5.24
REA	11.19
%LMY	62.49

ACT. BW	ACT. WW	ADJ. 205	ADJ. 365	EPDS								
				BW	WW	YW	MILK	TM				
98	742	641	1268	+4.4	36%	+35	27%	+53	15%	+12	9%	+30

## 8 BROOKMORE ZORZAL 158A

MALE JVJ 158A 1752591 FEBRUARY 04 2013

TRES MARIAS 6301 ZORZAL  
WAF ZORZAL 321U AMF CAF NHF OSF 1485949  
TRES MARIAS 6582 CUMELEN 5632

BUSHES GRAND DESIGN AMF CAF NHF DDF  
BROOKMORE MEMORA 19S 1329933  
BROOKMORE ALETA 157P

TRES MARIAS 5887 HORNERO  
TRES MARIAS 4850 WIND EXT  
TRES MARIAS 5837 CUMELEN  
TRES MARIAS 5632 CHAPAR 5026

BON VIEW NEW DESIGN 1407 AMF CAF NHF DDC  
BUSHES LADY DIVIDEND 872  
S A F 598 BANDO 5175 AMF CAC DDF  
BROOKMORE MEMORA 95L

CARCASS	
MARB	4.70
BF	5.71
REA	13.38
%LMY	63.78

ACT. BW	ACT. WW	ADJ. 205	ADJ. 365	EPDS								
				BW	WW	YW	MILK	TM				
98	790	689	1357	+4.9	36%	+42	27%	+62	16%	+16	9%	+37

## 9 BROOKMORE ZORZAL 160A

MALE JVJ 160A 1752606 FEBRUARY 04 2013

TRES MARIAS 6301 ZORZAL  
WAF ZORZAL 321U AMF CAF NHF OSF 1485949  
TRES MARIAS 6582 CUMELEN 5632

SITZ ALLIANCE 6595 DMF AMF CAF NHF DDF  
BROOKMORE ALETA 170S 1321692  
BROOKMORE ALETA 157P

TRES MARIAS 5887 HORNERO  
TRES MARIAS 4850 WIND EXT  
TRES MARIAS 5837 CUMELEN  
TRES MARIAS 5632 CHAPAR 5026

SITZ TRAVELER 8180 AMF CAF NHF DDF  
SITZ BARBARAMERE JET 2698  
VERMILION DATELINE 7078 AMF CAF NHF DDF  
BROOKMORE ALETA 120E

CARCASS	
MARB	5.10
BF	7.71
REA	13.26
%LMY	61.64

ACT. BW	ACT. WW	ADJ. 205	ADJ. 365	EPDS								
				BW	WW	YW	MILK	TM				
98	806	703	1320	+5.2	36%	+45	27%	+68	16%	+16	9%	+39

## 10 BROOKMORE ZORZAL 181A

MALE JVJ 181A 1752631 FEBRUARY 10 2013

TRES MARIAS 6301 ZORZAL  
WAF ZORZAL 321U AMF CAF NHF OSF 1485949  
TRES MARIAS 6582 CUMELEN 5632

B/R NEW FRONTIER 095 AMF CAF NHF DDF  
ATLASTA ERICA 17U 1473799  
ATLASTA ELLEN ERICA 65P

TRES MARIAS 5887 HORNERO  
TRES MARIAS 4850 WIND EXT  
TRES MARIAS 5837 CUMELEN  
TRES MARIAS 5632 CHAPAR 5026

B/R NEW DESIGN 036 AMF CAF NHF DDC  
WHITE FENCE PRIDE H1  
W V F HB ATLANTIC NATL MERIT  
MLA ELLEN ERICA 36'93

CARCASS	
MARB	4.70
BF	4.76
REA	12.49
%LMY	64.03

ACT. BW	ACT. WW	ADJ. 205	ADJ. 365	EPDS								
				BW	WW	YW	MILK	TM				
90	724	645	1166	+4.4	36%	+34	27%	+55	14%	+14	9%	+31

## 11 BROOKMORE ZORZAL 185A

MALE JVJ 185A 1752625 FEBRUARY 12 2013

TRES MARIAS 6301 ZORZAL  
WAF ZORZAL 321U AMF CAF NHF OSF 1485949  
TRES MARIAS 6582 CUMELEN 5632

BUSHES GRAND DESIGN AMF CAF NHF DDF  
BROOKMORE ALETA 184T 1375993  
BROOKMORE ALETA 157P

TRES MARIAS 5887 HORNERO  
TRES MARIAS 4850 WIND EXT  
TRES MARIAS 5837 CUMELEN  
TRES MARIAS 5632 CHAPAR 5026

BON VIEW NEW DESIGN 1407 AMF CAF NHF DDC  
BUSHES LADY DIVIDEND 872  
VERMILION DATELINE 7078 AMF CAF NHF DDF  
BROOKMORE ALETA 120E

CARCASS	
MARB	5.45
BF	6.67
REA	12.37
%LMY	61.99

ACT. BW	ACT. WW	ADJ. 205	ADJ. 365	EPDS								
				BW	WW	YW	MILK	TM				
84	825	739	1342	+2.8	36%	+45	27%	+60	16%	+16	9%	+39



LOT 9 - BROOKMORE ZORZAL 160A

# CATTLEMAN'S CONNECTION ANGUS BULL SALE 2014



LOT 13 - BROOKMORE ZORZAL 205A



LOT 14 - BROOKMORE ZORZAL 210A

## 12 BROOKMORE ZORZAL 204A

MALE JVJ 204A 1752609 FEBRUARY 19 2013

TRES MARIAS 6301 ZORZAL  
WAF ZORZAL 321U AMF CAF NHF OSF 1485949  
TRES MARIAS 6582 CUMELLEN 5632

TRES MARIAS 5887 HORNERO  
TRES MARIAS 4850 WIND EXT  
TRES MARIAS 5837 CUMELLEN  
TRES MARIAS 5632 CHAPAR 5026

CARCASS	
MARB	4.55
BF	6.19
REA	12.18
%LMY	62.32

TC FOREMAN 016  
BROOKMORE ERICETTE 181S 1345677  
MVF ERICETTE 62J

CONNELLY FOREFRONT AMF CAF NHF DDF  
TC PRIDE 8067  
SCOTCH CAP AMF CAF NHF DDF  
OLE SASKALTA ERICETTE 457D

ACT. BW	ACT. WW	ADJ. 205	ADJ. 365	EPDS								
				BW	WW	YW	MILK	TM				
88	730	673	1210	+4.0	36%	+37	27%	+56	16%	+13	9%	+32

## 14 BROOKMORE ZORZAL 210A

MALE JVJ 210A 1752605 FEBRUARY 23 2013

TRES MARIAS 6301 ZORZAL  
WAF ZORZAL 321U AMF CAF NHF OSF 1485949  
TRES MARIAS 6582 CUMELLEN 5632

TRES MARIAS 5887 HORNERO  
TRES MARIAS 4850 WIND EXT  
TRES MARIAS 5837 CUMELLEN  
TRES MARIAS 5632 CHAPAR 5026

CARCASS	
MARB	4.55
BF	6.19
REA	12.75
%LMY	62.78

F A R KRUGERRAND 410H AMF CAF NHF DDF  
BROOKMORE RUBY 78S 1321666  
BROOKMORE RUBY 19P

KRUGERRAND OF DONAMERE 490 AMF NHF  
F A R ERIANNA 286F  
BUSHS GRAND DESIGN AMF CAF NHF DDF  
BROOKMORE RUBY 30M

ACT. BW	ACT. WW	ADJ. 205	ADJ. 365	EPDS								
				BW	WW	YW	MILK	TM				
88	770	721	1201	+4.7	36%	+42	27%	+67	16%	+15	9%	+36

## 13 BROOKMORE ZORZAL 205A

MALE JVJ 205A 1752586 FEBRUARY 20 2013

TRES MARIAS 6301 ZORZAL  
WAF ZORZAL 321U AMF CAF NHF OSF 1485949  
TRES MARIAS 6582 CUMELLEN 5632

TRES MARIAS 5887 HORNERO  
TRES MARIAS 4850 WIND EXT  
TRES MARIAS 5837 CUMELLEN  
TRES MARIAS 5632 CHAPAR 5026

CARCASS	
MARB	4.80
BF	6.19
REA	12.27
%LMY	62.39

SITZ ALLIANCE 6595 DMF AMF CAF NHF DDF  
BROOKMORE DAISY 259R 1293275  
BABA DAISY 24L

SITZ TRAVELER 8180 AMF CAF NHF DDF  
SITZ BARBARAMERE JET 2698  
MVF FULLBACK 100J  
BROOKMORE DAISY 117E

ACT. BW	ACT. WW	ADJ. 205	ADJ. 365	EPDS								
				BW	WW	YW	MILK	TM				
82	745	689	1267	+3.3	36%	+37	27%	+59	16%	+16	9%	+35

## 15 BROOKMORE ZORZAL 215A

MALE JVJ 215A 1752560 FEBRUARY 26 2013

TRES MARIAS 6301 ZORZAL  
WAF ZORZAL 321U AMF CAF NHF OSF 1485949  
TRES MARIAS 6582 CUMELLEN 5632

TRES MARIAS 5887 HORNERO  
TRES MARIAS 4850 WIND EXT  
TRES MARIAS 5837 CUMELLEN  
TRES MARIAS 5632 CHAPAR 5026

CARCASS	
MARB	4.00
BF	5.27
REA	11.67
%LMY	62.84

VERMILION DATELINE 7078 AMF CAF NHF DDF  
BROOKMORE ALETA 116P 1211909  
BROOKMORE ALETA 30F

CONNELLY DATELINE DDF  
VERMILION BLACKBIRD 5044  
MINERTS FORTUNE 2000 AMF CAF NHF DDF  
BROOKMORE ALETA 121D

ACT. BW	ACT. WW	ADJ. 205	ADJ. 365	EPDS								
				BW	WW	YW	MILK	TM				
92	793	751	1259	+4.7	37%	+45	28%	+70	16%	+16	9%	+39



LOT 16 - BROOKMORE ZORZAL 221A

## 16 BROOKMORE ZORZAL 221A

MALE JVJ 221A 1752750 MARCH 01 2013

TRES MARIAS 6301 ZORZAL  
WAF ZORZAL 321U AMF CAF NHF OSF 1485949  
TRES MARIAS 6582 CUMELLEN 5632

TRES MARIAS 5887 HORNERO  
TRES MARIAS 4850 WIND EXT  
TRES MARIAS 5837 CUMELLEN  
TRES MARIAS 5632 CHAPAR 5026

CARCASS	
MARB	4.65
BF	6.67
REA	10.96
%LMY	60.84

REMITALL SUPEREVENT 532S  
ATLASTA BLACKCAP 31X 1582938  
ATLASTA BB BLACKCAP 012T

JUSTAMERE 1118 CASH 665P  
KBJ ANNIE 829N  
BON VIEW NEW DESIGN 878 AMF CAF NHF DDF  
BB BLACKCAP 15P

ACT. BW	ACT. WW	ADJ. 205	ADJ. 365	EPDS								
				BW	WW	YW	MILK	TM				
68	661	671	1286	+1.3	35%	+44	26%	+69	11%	+16	7%	+38



# CATTLEMAN'S CONNECTION ANGUS BULL SALE 2014



LOT 17  
BROOKMORE  
UPWARD 179A

## 17 BROOKMORE UPWARD 179A

MALE JVJ 179A 1752721 FEBRUARY 08 2013

CONNEALY ONWARD DMF AMF CAF NHF DDF  
SITZ UPWARD 307R DMF AMF CAF NHF DDF 1385926  
SITZ HENRIETTA PRIDE 81M

S A V FINAL ANSWER 0035 AMF CAF NHF DDF  
BROOKMORE TIBBIE 131W 1513161  
WKJ TIBBIE 4K

CONNEALY LEAD ON DMF AMF CAF NHF DDF  
ALTUNE OF CONANGA 6104  
SITZ VALUE 7097 AMF CAF NHF DDF  
SITZ HENRIETTA PRIDE 1370  
SITZ TRAVELER 8180 AMF CAF NHF DDF  
S A V EMULOUS 8145 CAF  
S A F FAME AMF CAF NHF DDF  
KENOSSE PARK TIBBIE 22C

CARCASS	
MARB	4.00
BF	4.76
REA	12.78
%LMY	64.27

ACT. BW	ACT. WW	ADJ. 205	ADJ. 365	EPDS								
				BW	WW	YW	MILK	TM				
90	814	735	1312	+4.4	37%	+62	29%	+109	24%	+29	22%	+60



LOT 18 - BROOKMORE UPWARD 55A

## 18 BROOKMORE UPWARD 55A

MALE JVJ 55A 1752717 JANUARY 19 2013

CONNEALY ONWARD DMF AMF CAF NHF DDF  
SITZ UPWARD 307R DMF AMF CAF NHF DDF 1385926  
SITZ HENRIETTA PRIDE 81M

S A V 004 DENSITY 4336 AMF CAF NHF DDF  
BROOKMORE ALETA 84W 1513994  
BROOKMORE ALETA 164N

CONNEALY LEAD ON DMF AMF CAF NHF DDF  
ALTUNE OF CONANGA 6104  
SITZ VALUE 7097 AMF CAF NHF DDF  
SITZ HENRIETTA PRIDE 1370  
S A V 8180 TRAVELER 004 DMF DWF AMF CAF NHF OSF DDF  
S A V MAY 7238 CAF DDF  
BON VIEW NEW DESIGN 878 AMF CAF NHF DDF  
BROOKMORE ALETA 56L

CARCASS	
MARB	5.20
BF	7.17
REA	14.69
%LMY	63.36

ACT. BW	ACT. WW	ADJ. 205	ADJ. 365	EPDS								
				BW	WW	YW	MILK	TM				
82	850	713	1515	+1.9	37%	+58	29%	+103	24%	+34	22%	+63

## SITZ UPWARD 307R

**BW +2.5 WW +70 YW +132 Milk +42 TM +77 SC: +1.62**

BW: 85 lbs. Adj. 205D: 902 lbs. Adj. 365D: 1395 lbs.

Sitz Upward 307R has set the standard by which all other Angus bulls are measured. He combines moderate birth weight, huge weaning and yearling growth. His daughters are outstanding females with good udders and good disposition making the Upward progeny some of the most popular in the breed.

**20 SONS SELL**



# CATTLEMAN'S CONNECTION ANGUS BULL SALE 2014



LOT 23 - BROOKMORE UPWARD 102A



LOT 24 - BROOKMORE UPWARD 119A

## 19 BROOKMORE UPWARD 56A

MALE JVJ 56A 1752541 JANUARY 20 2013

CONNELY ONWARD DMF AMF CAF NHF DDF  
SITZ UPWARD 307R DMF AMF CAF NHF DDF 1385926  
SITZ HENRIETTA PRIDE 81M

MVF STOCKMAN 45H  
BROOKMORE TIBBIE 35N 1186652  
WKJ TIBBIE 4K

CONNELY LEAD ON DMF AMF CAF NHF DDF  
ALTUNE OF CONANGA 6104  
SITZ VALUE 7097 AMF CAF NHF DDF  
SITZ HENRIETTA PRIDE 1370

TC STOCKMAN 365  
DODSWOOD ENCHANTRESS MAX-90  
S A F FAME AMF CAF NHF DDF  
KENOSEE PARK TIBBIE 22C

CARCASS	
MARB	4.25
BF	4.76
REA	12.77
%LMY	64.26

ACT. BW	ACT. WW	ADJ. 205	ADJ. 365	EPDS								
				BW	WW	YW	MILK	TM				
80	738	609	1149	+2.3	38%	+56	29%	+96	25%	+22	24%	+50

## 22 BROOKMORE UPWARD 94A

MALE JVJ 94A 1752719 JANUARY 27 2013

CONNELY ONWARD DMF AMF CAF NHF DDF  
SITZ UPWARD 307R DMF AMF CAF NHF DDF 1385926  
SITZ HENRIETTA PRIDE 81M

S A V NET WORTH 4200 AMF CAF NHF DDF  
BROOKMORE HEROINE 128W 1513396  
BROOKMORE HEROINE 151L

CONNELY LEAD ON DMF AMF CAF NHF DDF  
ALTUNE OF CONANGA 6104  
SITZ VALUE 7097 AMF CAF NHF DDF  
SITZ HENRIETTA PRIDE 1370

S A V 8180 TRAVELER 004 DMF DWF AMF CAF NHF OSF DDF  
S A V MAY 2410  
G D A R ROLLS ROYCE 203  
BROOKMORE HEROINE 17A

CARCASS	
MARB	4.50
BF	6.67
REA	12.79
%LMY	62.33

ACT. BW	ACT. WW	ADJ. 205	ADJ. 365	EPDS								
				BW	WW	YW	MILK	TM				
82	710	617	1183	+1.7	37%	+54	29%	+110	24%	+31	22%	+58

## 20 BROOKMORE UPWARD 74A

MALE JVJ 74A 1752582 JANUARY 23 2013

CONNELY ONWARD DMF AMF CAF NHF DDF  
SITZ UPWARD 307R DMF AMF CAF NHF DDF 1385926  
SITZ HENRIETTA PRIDE 81M

SITZ ALLIANCE 6595 DMF AMF CAF NHF DDF  
BROOKMORE LUCY 119R 1293389  
BROOKMORE LUCY 61N

CONNELY LEAD ON DMF AMF CAF NHF DDF  
ALTUNE OF CONANGA 6104  
SITZ VALUE 7097 AMF CAF NHF DDF  
SITZ HENRIETTA PRIDE 1370

SITZ TRAVELER 8180 AMF CAF NHF DDF  
SITZ BARBARAMERE JET 2698  
MVF STOCKMAN 45H  
KEMBAR LUCY 16F

CARCASS	
MARB	4.25
BF	5.71
REA	13.35
%LMY	63.76

ACT. BW	ACT. WW	ADJ. 205	ADJ. 365	EPDS								
				BW	WW	YW	MILK	TM				
90	737	616	1251	+3.6	38%	+49	29%	+97	25%	+29	23%	+54

## 23 BROOKMORE UPWARD 102A

MALE JVJ 102A 1752698 JANUARY 28 2013

CONNELY ONWARD DMF AMF CAF NHF DDF  
SITZ UPWARD 307R DMF AMF CAF NHF DDF 1385926  
SITZ HENRIETTA PRIDE 81M

SITZ ALLIANCE 6595 DMF AMF CAF NHF DDF  
BROOKMORE HEROINE 274U 1441476  
BROOKMORE HEROINE 263P

CONNELY LEAD ON DMF AMF CAF NHF DDF  
ALTUNE OF CONANGA 6104  
SITZ VALUE 7097 AMF CAF NHF DDF  
SITZ HENRIETTA PRIDE 1370

SITZ TRAVELER 8180 AMF CAF NHF DDF  
SITZ BARBARAMERE JET 2698  
MVF STOCKMAN 45H  
BROOKMORE HEROINE 146K

CARCASS	
MARB	5.35
BF	9.07
REA	13.43
%LMY	60.39

ACT. BW	ACT. WW	ADJ. 205	ADJ. 365	EPDS								
				BW	WW	YW	MILK	TM				
84	876	741	1431	+2.6	37%	+61	29%	+112	24%	+31	22%	+62

## 21 BROOKMORE UPWARD 86A

MALE JVJ 86A 1752677 JANUARY 26 2013

CONNELY ONWARD DMF AMF CAF NHF DDF  
SITZ UPWARD 307R DMF AMF CAF NHF DDF 1385926  
SITZ HENRIETTA PRIDE 81M

S A V NET WORTH 4200 AMF CAF NHF DDF  
BROOKMORE BELLE 223U 1476223  
MADSEN'S BELLE 9N

CONNELY LEAD ON DMF AMF CAF NHF DDF  
ALTUNE OF CONANGA 6104  
SITZ VALUE 7097 AMF CAF NHF DDF  
SITZ HENRIETTA PRIDE 1370

S A V 8180 TRAVELER 004 DMF DWF AMF CAF NHF OSF DDF  
S A V MAY 2410  
BJ'S KORONA 3L  
BOTANY ANGUS BELLE 93H

CARCASS	
MARB	4.75
BF	5.27
REA	12.82
%LMY	63.78

ACT. BW	ACT. WW	ADJ. 205	ADJ. 365	EPDS								
				BW	WW	YW	MILK	TM				
80	724	610	1197	+2.3	37%	+52	29%	+102	24%	+30	22%	+56

## 24 BROOKMORE UPWARD 119A

MALE JVJ 119A 1752718 JANUARY 31 2013

CONNELY ONWARD DMF AMF CAF NHF DDF  
SITZ UPWARD 307R DMF AMF CAF NHF DDF 1385926  
SITZ HENRIETTA PRIDE 81M

S A V 004 DENSITY 4336 AMF CAF NHF DDF  
BROOKMORE TIBBIE 124W 1513402  
BROOKMORE TIBBIE 185L

CONNELY LEAD ON DMF AMF CAF NHF DDF  
ALTUNE OF CONANGA 6104  
SITZ VALUE 7097 AMF CAF NHF DDF  
SITZ HENRIETTA PRIDE 1370

S A V 8180 TRAVELER 004 DMF DWF AMF CAF NHF OSF DDF  
S A V MAY 7238 CAF DDF  
AHVA BARDOLIER 36H  
BROOKMORE TIBBIE 196H

CARCASS	
MARB	5.00
BF	7.14
REA	15.09
%LMY	63.71

ACT. BW	ACT. WW	ADJ. 205	ADJ. 365	EPDS								
				BW	WW	YW	MILK	TM				
94	824	723	1489	+4.5	37%	+62	28%	+107	24%	+28	22%	+59

# CATTLEMAN'S CONNECTION ANGUS BULL SALE 2014

## 25

### BROOKMORE UPWARD 122A

MALE JVJ 122A 1752659 FEBRUARY 01 2013

CONNEALY ONWARD DMF AMF CAF NHF DDF  
SITZ UPWARD 307R DMF AMF CAF NHF DDF 1385926  
SITZ HENRIETTA PRIDE 81M

CONNEALY LEAD ON DMF AMF CAF NHF DDF  
ALTUNE OF CONANGA 6104  
SITZ VALUE 7097 AMF CAF NHF DDF  
SITZ HENRIETTA PRIDE 1370

CARCASS	
MARB	5.15
BF	7.14
REA	13.08
%LMY	62.07

S A V NET WORTH 4200 AMF CAF NHF DDF  
BROOKMORE TIBBIE 88U 1441440  
BROOKMORE TIBBIE 53P

S A V 8180 TRAVELER 004 DMF DWF AMF CAF NHF OSF DDF  
S A V MAY 2410  
SITZ ALLIANCE 6595 DMF AMF CAF NHF DDF  
MVF TIBBIE 38H

ACT. BW	ACT. WW	ADJ. 205	ADJ. 365	EPDS								
				BW	WW	YW	MILK	TM				
84	755	650	1313	+2.1	38%	+52	29%	+101	24%	+30	22%	+56



LOT 27 - BROOKMORE UPWARD 137A

## 26

### BROOKMORE UPWARD 131A

MALE JVJ 131A 1752757 FEBRUARY 02 2013

CONNEALY ONWARD DMF AMF CAF NHF DDF  
SITZ UPWARD 307R DMF AMF CAF NHF DDF 1385926  
SITZ HENRIETTA PRIDE 81M

CONNEALY LEAD ON DMF AMF CAF NHF DDF  
ALTUNE OF CONANGA 6104  
SITZ VALUE 7097 AMF CAF NHF DDF  
SITZ HENRIETTA PRIDE 1370

CARCASS	
MARB	4.25
BF	6.22
REA	13.03
%LMY	62.98

DUNLOUISE CORTACHY BOY D137 AMF CAF NHF DDF  
BROOKMORE TIBBIE 68X 1558351  
BROOKMORE TIBBIE 149T

ASHLEY EULAR  
CHAMPAGNE CHERRY BEE B117  
S A V 004 DENSITY 4336 AMF CAF NHF DDF  
BROOKMORE TIBBIE 73K

ACT. BW	ACT. WW	ADJ. 205	ADJ. 365	EPDS								
				BW	WW	YW	MILK	TM				
84	730	669	1282	+3.9	37%	+51	28%	+89	24%	+28	21%	+54

## 29

### BROOKMORE UPWARD 152A

MALE JVJ 152A 1752569 FEBRUARY 04 2013

CONNEALY ONWARD DMF AMF CAF NHF DDF  
SITZ UPWARD 307R DMF AMF CAF NHF DDF 1385926  
SITZ HENRIETTA PRIDE 81M

CONNEALY LEAD ON DMF AMF CAF NHF DDF  
ALTUNE OF CONANGA 6104  
SITZ VALUE 7097 AMF CAF NHF DDF  
SITZ HENRIETTA PRIDE 1370

CARCASS	
MARB	4.75
BF	9.05
REA	13.52
%LMY	60.49

MVF PERFECT BLEND 32H  
BROOKMORE LADY JANE 250P 1212215  
BROOKMORE LADY JANE 137L

N BAR EMULATION EXT AMF CAF NHF DDF  
MVF TIBBIE 64F  
ALBERDA TRAVELER 416 AMF CAF NHF DDF  
BROOKMORE LADY JANE 56A

ACT. BW	ACT. WW	ADJ. 205	ADJ. 365	EPDS								
				BW	WW	YW	MILK	TM				
88	814	708	1379	+4.3	38%	+55	29%	+101	24%	+32	23%	+60

## 27

### BROOKMORE UPWARD 137A

MALE JVJ 137A 1752561 FEBRUARY 03 2013

CONNEALY ONWARD DMF AMF CAF NHF DDF  
SITZ UPWARD 307R DMF AMF CAF NHF DDF 1385926  
SITZ HENRIETTA PRIDE 81M

CONNEALY LEAD ON DMF AMF CAF NHF DDF  
ALTUNE OF CONANGA 6104  
SITZ VALUE 7097 AMF CAF NHF DDF  
SITZ HENRIETTA PRIDE 1370

CARCASS	
MARB	4.15
BF	4.76
REA	13.83
%LMY	65.12

BUSHES GRAND DESIGN AMF CAF NHF DDF  
BROOKMORE TIBBIE 122P 1212262  
BROOKMORE TIBBIE 51M

BON VIEW NEW DESIGN 1407 AMF CAF NHF DDF  
BUSHES LADY DIVIDEND 872  
PF 7215 AVENGER 0232  
BROOKMORE TIBBIE 38E

ACT. BW	ACT. WW	ADJ. 205	ADJ. 365	EPDS								
				BW	WW	YW	MILK	TM				
94	790	686	1352	+4.2	38%	+55	29%	+93	24%	+27	23%	+55

## 30

### BROOKMORE UPWARD 169A

MALE JVJ 169A 1752603 FEBRUARY 06 2013

CONNEALY ONWARD DMF AMF CAF NHF DDF  
SITZ UPWARD 307R DMF AMF CAF NHF DDF 1385926  
SITZ HENRIETTA PRIDE 81M

CONNEALY LEAD ON DMF AMF CAF NHF DDF  
ALTUNE OF CONANGA 6104  
SITZ VALUE 7097 AMF CAF NHF DDF  
SITZ HENRIETTA PRIDE 1370

CARCASS	
MARB	4.85
BF	6.67
REA	13.29
%LMY	62.73

L T 598 BANDO 9074 AMF CAF NHF DDF  
BROOKMORE LADY JANE 35S 1321699  
BROOKMORE LADY JANE 250P

S A F 598 BANDO 5175 AMF CAF NHF DDF  
MILL COULEE BARBARA K 323  
MVF PERFECT BLEND 32H  
BROOKMORE LADY JANE 137L

ACT. BW	ACT. WW	ADJ. 205	ADJ. 365	EPDS								
				BW	WW	YW	MILK	TM				
94	811	712	1436	+3.6	38%	+54	29%	+104	25%	+31	23%	+58

## 28

### BROOKMORE UPWARD 151A

MALE JVJ 151A 1752673 FEBRUARY 04 2013

CONNEALY ONWARD DMF AMF CAF NHF DDF  
SITZ UPWARD 307R DMF AMF CAF NHF DDF 1385926  
SITZ HENRIETTA PRIDE 81M

CONNEALY LEAD ON DMF AMF CAF NHF DDF  
ALTUNE OF CONANGA 6104  
SITZ VALUE 7097 AMF CAF NHF DDF  
SITZ HENRIETTA PRIDE 1370

CARCASS	
MARB	5.05
BF	6.67
REA	13.30
%LMY	62.75

K C F BENNETT TOTAL AMF CAF NHF DDF  
BROOKMORE KARAMA 185U 1441450  
BROOKMORE KARAMA 77P

SITZ ALLIANCE 6595 DMF AMF CAF NHF DDF  
EXT OF CONANGA 6790  
VERMILION DATELINE 7078 AMF CAF NHF DDF  
BROOKMORE KARAMA 177L

ACT. BW	ACT. WW	ADJ. 205	ADJ. 365	EPDS								
				BW	WW	YW	MILK	TM				
88	759	661	1304	+2.9	37%	+53	29%	+102	24%	+29	22%	+56

## 31

### BROOKMORE UPWARD 186A

MALE JVJ 186A 1752568 TWIN FEBRUARY 12 2013

CONNEALY ONWARD DMF AMF CAF NHF DDF  
SITZ UPWARD 307R DMF AMF CAF NHF DDF 1385926  
SITZ HENRIETTA PRIDE 81M

CONNEALY LEAD ON DMF AMF CAF NHF DDF  
ALTUNE OF CONANGA 6104  
SITZ VALUE 7097 AMF CAF NHF DDF  
SITZ HENRIETTA PRIDE 1370

CARCASS	
MARB	4.70
BF	4.76
REA	12.05
%LMY	63.67

F A R KRUGERRAND 410H AMF CAF NHF DDF  
BROOKMORE EILEENMERE 233P 1212297  
BROOKMORE EILEENMERE 111M

KRUGERRAND OF DONAMERE 490 AMF NHF  
F A R ERIANNA 286F  
MVF PERFECT BLEND 32H  
BROOKMORE EILEENMERE 188H

ACT. BW	ACT. WW	ADJ. 205	ADJ. 365	EPDS								
				BW	WW	YW	MILK	TM				
68	769	687	1229	+2.4	P	+58	P	+108	P	+27	P	-

# CATTLEMAN'S CONNECTION ANGUS BULL SALE 2014



LOT 32 - BROOKMORE UPWARD 189A



LOT 33 - BROOKMORE UPWARD 202A

## 32 BROOKMORE UPWARD 189A

MALE JVJ 189A 1752546 FEBRUARY 13 2013

CONNEALY ONWARD DMF AMF CAF NHF DDF  
SITZ UPWARD 307R DMF AMF CAF NHF DDF 1385926  
SITZ HENRIETTA PRIDE 81M

CONNEALY LEAD ON DMF AMF CAF NHF DDF  
ALTUNE OF CONANGA 6104  
SITZ VALUE 7097 AMF CAF NHF DDF  
SITZ HENRIETTA PRIDE 1370

CARCASS	
MARB	4.50
BF	5.84
REA	13.02
%LMY	63.36

BON VIEW NEW DESIGN 878 AMF CAF NHF DDF  
BROOKMORE ALETA 164N 1186917  
BROOKMORE ALETA 56L

B/R NEW DESIGN 036 AMF CAF NHF DDF  
BON VIEW GAMMER 85 CAC  
MVF FULLBACK 100J  
BROOKMORE ALETA 63H

ACT. BW	ACT. WW	ADJ. 205	ADJ. 365	EPDS								
				BW	WW	YW	MILK	TM				
82	803	722	1317	+1.5	38%	+58	29%	+101	25%	+31	23%	+60

## 35 BROOKMORE UPWARD 216A

MALE JVJ 216A 1752557 FEBRUARY 27 2013

CONNEALY ONWARD DMF AMF CAF NHF DDF  
SITZ UPWARD 307R DMF AMF CAF NHF DDF 1385926  
SITZ HENRIETTA PRIDE 81M

CONNEALY LEAD ON DMF AMF CAF NHF DDF  
ALTUNE OF CONANGA 6104  
SITZ VALUE 7097 AMF CAF NHF DDF  
SITZ HENRIETTA PRIDE 1370

CARCASS	
MARB	4.20
BF	6.67
REA	12.47
%LMY	62.07

S A F BANDO 5175 AMF CAC DDF  
BROOKMORE ELLEN 66P CAF 1211884  
BROOKMORE ELLEN 143D

BON VIEW BANDO 598 AMF CAC DDF  
S A F ROYAL LASS 1002  
MVHF STARDOM 12A  
BROOKMORE ELLEN 53U

ACT. BW	ACT. WW	ADJ. 205	ADJ. 365	EPDS								
				BW	WW	YW	MILK	TM				
90	809	769	1324	+4.5	38%	+58	29%	+109	25%	+31	23%	+60

## 33 BROOKMORE UPWARD 202A

MALE JVJ 202A 1752782 FEBRUARY 18 2013

CONNEALY ONWARD DMF AMF CAF NHF DDF  
SITZ UPWARD 307R DMF AMF CAF NHF DDF 1385926  
SITZ HENRIETTA PRIDE 81M

CONNEALY LEAD ON DMF AMF CAF NHF DDF  
ALTUNE OF CONANGA 6104  
SITZ VALUE 7097 AMF CAF NHF DDF  
SITZ HENRIETTA PRIDE 1370

CARCASS	
MARB	5.00
BF	7.17
REA	13.28
%LMY	62.21

S A V NET WORTH 4200 AMF CAF NHF DDF  
BROOKMORE KARAMA 189X 1558295  
BROOKMORE KARAMA 76R

S A V 8180 TRAVELER 004 DMF AMF CAF NHF OSF DDF  
S A V MAY 2410  
MVF STOCKMAN 45H  
BROOKMORE KARAMA 130E

ACT. BW	ACT. WW	ADJ. 205	ADJ. 365	EPDS								
				BW	WW	YW	MILK	TM				
84	773	747	1397	+3.3	36%	+62	27%	+115	23%	+32	22%	+63

## 36 BROOKMORE UPWARD 231A

MALE JVJ 231A 1752770 MARCH 06 2013

CONNEALY ONWARD DMF AMF CAF NHF DDF  
SITZ UPWARD 307R DMF AMF CAF NHF DDF 1385926  
SITZ HENRIETTA PRIDE 81M

CONNEALY LEAD ON DMF AMF CAF NHF DDF  
ALTUNE OF CONANGA 6104  
SITZ VALUE 7097 AMF CAF NHF DDF  
SITZ HENRIETTA PRIDE 1370

CARCASS	
MARB	4.40
BF	4.33
REA	12.87
%LMY	64.78

DUNLOUISE COMMANDER BOND AMF CAF NHF DDF  
BROOKMORE HEROINE 101X 1558266  
BROOKMORE HEROINE 114P

WEDDERLIE EVICTOR  
CHAMPAGNE CHERRY BEE B117  
BON VIEW NEW DESIGN 878 AMF CAF NHF DDF  
BROOKMORE HEROINE 228M

ACT. BW	ACT. WW	ADJ. 205	ADJ. 365	EPDS								
				BW	WW	YW	MILK	TM				
78	651	675	1333	+1.7	37%	+45	28%	+79	24%	+29	21%	+52

## 34 BROOKMORE UPWARD 208A

MALE JVJ 208A 1752529 FEBRUARY 22 2013

CONNEALY ONWARD DMF AMF CAF NHF DDF  
SITZ UPWARD 307R DMF AMF CAF NHF DDF 1385926  
SITZ HENRIETTA PRIDE 81M

CONNEALY LEAD ON DMF AMF CAF NHF DDF  
ALTUNE OF CONANGA 6104  
SITZ VALUE 7097 AMF CAF NHF DDF  
SITZ HENRIETTA PRIDE 1370

CARCASS	
MARB	4.70
BF	5.27
REA	12.54
%LMY	63.55

BENCHMARK MAGIC MAN 007  
MADSEN'S ALETA 7M 1094477  
BROOKMORE ALETA 83K

EBON HILL MAGIC MAN 41'97  
STRATHISLA AUTUMN ROSE 803'98  
DAVIS MILLENNIUM 7518  
BROOKMORE ALETA 47F

ACT. BW	ACT. WW	ADJ. 205	ADJ. 365	EPDS								
				BW	WW	YW	MILK	TM				
84	732	709	1235	+3.7	38%	+55	29%	+105	23%	+26	23%	+54

**ASK ABOUT  
OUR SIGHT UNSEEN  
PURCHASE PLAN**

**Your satisfaction  
is guaranteed**

# CATTLEMAN'S CONNECTION ANGUS BULL SALE 2014



LOT 37  
BROOKMORE  
CONSENSUS 132A

## 37 BROOKMORE CONSENSUS 132A

MALE JVJ 132A 1752710 FEBRUARY 02 2013

CONNEALY CONSENSUS  
CONNEALY CONSENSUS 7229 CAF DDF 1593730  
BLUE LILLY OF CONANGA 16 CAF

KMK ALLIANCE 6595 187 AMF CAF NHF DDF  
BLINDA OF CONANGA 004  
WOODHILL ADMIRAL 77K AMF CAF NHF DDF  
BLUE CASH OF CONANGA 6020 CAF

CARCASS	
MARB	5.65
BF	10.49
REA	14.15
%LMY	59.52

S A V 004 DENSITY 4336 AMF CAF NHF DDF  
BROOKMORE RUBY 62W 1516059  
BROOKMORE RUBY 78S

S A V 8180 TRAVELER 004 DMF DMF AMF CAF NHF OSF DDF  
S A V MAY 7238 CAF DDF  
F A R KRUGERRAND 410H AMF CAF NHF DDF  
BROOKMORE RUBY 19P

ACT. BW	ACT. WW	ADJ. 205	ADJ. 365	EPDS								
				BW	WW	YW	MILK	TM				
88	809	715	1424	+3.5	37%	+57	28%	+98	24%	+30	18%	+59



LOT 38 - BROOKMORE CONSENSUS 18A

## 38 BROOKMORE CONSENSUS 18A

MALE JVJ 18A 1753074 JANUARY 10 2013

CONNEALY CONSENSUS  
CONNEALY CONSENSUS 7229 CAF DDF 1593730  
BLUE LILLY OF CONANGA 16 CAF

KMK ALLIANCE 6595 187 AMF CAF NHF DDF  
BLINDA OF CONANGA 004  
WOODHILL ADMIRAL 77K AMF CAF NHF DDF  
BLUE CASH OF CONANGA 6020 CAF

CARCASS	
MARB	4.60
BF	4.76
REA	12.38
%LMY	63.94

SITZ UPWARD 307R DMF AMF CAF NHF DDF  
BROOKMORE KARAMA 89Y 1633904  
BROOKMORE KARAMA 89N CAF

CONNEALY ONWARD DMF AMF CAF NHF DDF  
SITZ HENRIETTA PRIDE 81M  
S A F 598 BANDO 5175 AMF CAC DDF  
BROOKMORE KARAMA 45H

ACT. BW	ACT. WW	ADJ. 205	ADJ. 365	EPDS								
				BW	WW	YW	MILK	TM				
80	730	657	1208	+3.0	37%	+55	28%	+97	24%	+30	18%	+58

## CONNEALY CONSENSUS 7229

**BW +2.3 WW +64 YW +105 Milk +35 TM +67 SC: +0.99**

BW: 71 lbs. Adj. 205D: 817 lbs. Adj. 365D: 1420 lbs.

Connealy Consensus 7229 is a bull with powerful stature, strong EPDs and outstanding phenotype. He has proven a reliable sire producing low birth with excellent weaning, yearling weights and marbling. Consensus 7229 has sired more high selling sons than any bull in the business and his daughters are top prospects.

**6 SONS SELL**



# CATTLEMAN'S CONNECTION ANGUS BULL SALE 2014



LOT 39 - BROOKMORE CONSENSUS 36A

## 39 BROOKMORE CONCENSUS 36A

MALE JVJ 36A 1753079 JANUARY 14 2013

CONNEALY CONSENSUS  
**CONNEALY CONSENSUS 7229** CAF DDF 1593730  
 BLUE LILLY OF CONANGA 16 CAF

SITZ UPWARD 307R DMF AMF CAF NHF DDF  
**BROOKMORE ERICETTE 104Y** 1603612  
 BROOKMORE ERICETTE 10P

KMK ALLIANCE 6595 187 AMF CAF NHF DDF  
 BLINDA OF CONANGA 004  
 WOODHILL ADMIRAL 77K AMF CAF NHF DDF  
 BLUE CASH OF CONANGA 6020 CAF  
 CONNEALY ONWARD DMF AMF CAF NHF DDF  
 SITZ HENRIETTA PRIDE 81M  
 BUSHS GRAND DESIGN AMF CAF NHF DDF  
 BROOKMORE ERICETTE 135M

CARCASS	
MARB	5.60
BF	7.17
REA	16.18
%LMY	64.57

ACT. BW	ACT. WW	ADJ. 205	ADJ. 365	EPDS								
				BW	WW	YW	MILK	TM				
86	892	793	1538	+3.7	37%	+66	28%	+107	23%	+35	18%	+68

## 40 BROOKMORE CONCENSUS 39A

MALE JVJ 39A 1753064 JANUARY 15 2013

CONNEALY CONSENSUS  
**CONNEALY CONSENSUS 7229** CAF DDF 1593730  
 BLUE LILLY OF CONANGA 16 CAF

TC ABERDEEN 759 AMF CAF NHF DDF  
**BROOKMORE MARY 43Y** 1603955  
 BROOKMORE MARY 230U

KMK ALLIANCE 6595 187 AMF CAF NHF DDF  
 BLINDA OF CONANGA 004  
 WOODHILL ADMIRAL 77K AMF CAF NHF DDF  
 BLUE CASH OF CONANGA 6020 CAF  
 C R A BEXTOR 872 5205 608 AMF CAF NHF DDF  
 TC BLACKBIRD 4034 CAF  
 S A V 004 DENSITY 4336 AMF CAF NHF DDF  
 BROOKMORE MARY 90M

CARCASS	
MARB	4.70
BF	7.64
REA	13.19
%LMY	61.65

ACT. BW	ACT. WW	ADJ. 205	ADJ. 365	EPDS								
				BW	WW	YW	MILK	TM				
90	850	763	1329	+4.1	37%	+63	28%	+106	23%	+33	18%	+65



LOT 40 - BROOKMORE CONSENSUS 39A



LOT 41 - BROOKMORE CONSENSUS 97A

## 41 BROOKMORE CONCENSUS 97A

MALE JVJ 97A 1752777 JANUARY 27 2013

CONNEALY CONSENSUS  
**CONNEALY CONSENSUS 7229** CAF DDF 1593730  
 BLUE LILLY OF CONANGA 16 CAF

S A V NET WORTH 4200 AMF CAF NHF DDF  
**BROOKMORE ALETA 125X** 1558257  
 BROOKMORE ALETA 54P

KMK ALLIANCE 6595 187 AMF CAF NHF DDF  
 BLINDA OF CONANGA 004  
 WOODHILL ADMIRAL 77K AMF CAF NHF DDF  
 BLUE CASH OF CONANGA 6020 CAF  
 S A V 8180 TRAVELER 004 DMF DWF AMF CAF NHF OSF DDF  
 S A V MAY 2410  
 MVF STOCKMAN 45H  
 BROOKMORE ALETA 122H

CARCASS	
MARB	5.20
BF	7.17
REA	10.75
%LMY	60.16

ACT. BW	ACT. WW	ADJ. 205	ADJ. 365	EPDS								
				BW	WW	YW	MILK	TM				
76	697	627	1203	+3.1	37%	+50	28%	+92	24%	+26	18%	+51

## 42 BROOKMORE CONCENSUS 117A

MALE JVJ 117A 1753096 JANUARY 31 2013

CONNEALY CONSENSUS  
**CONNEALY CONSENSUS 7229** CAF DDF 1593730  
 BLUE LILLY OF CONANGA 16 CAF

SITZ UPWARD 307R DMF AMF CAF NHF DDF  
**BROOKMORE DAISY 177Y** 1603922  
 BROOKMORE DAISY 34U

KMK ALLIANCE 6595 187 AMF CAF NHF DDF  
 BLINDA OF CONANGA 004  
 WOODHILL ADMIRAL 77K AMF CAF NHF DDF  
 BLUE CASH OF CONANGA 6020 CAF  
 CONNEALY ONWARD DMF AMF CAF NHF DDF  
 SITZ HENRIETTA PRIDE 81M  
 B C MATRIX 4132 AMF CAF NHF DDF  
 BROOKMORE DAISY 45S

CARCASS	
MARB	4.80
BF	3.99
REA	13.11
%LMY	65.32

ACT. BW	ACT. WW	ADJ. 205	ADJ. 365	EPDS								
				BW	WW	YW	MILK	TM				
80	789	750	1341	+2.4	37%	+64	28%	+108	23%	+34	18%	+66



LOT 42 - BROOKMORE CONSENSUS 117A

# CATTLEMAN'S CONNECTION ANGUS BULL SALE 2014



LOT 43 - BROOKMORE CONSENSUS 156A



LOT 44 - BROOKMORE CONSENSUS 157A

## 43 BROOKMORE CONCENSUS 156A

MALE JVJ 156A 1771206 FEBRUARY 04 2013

CONNEALY CONSENSUS  
CONNEALY CONSENSUS 7229 CAF DDF 1593730  
BLUE LILLY OF CONANGA 16 CAF

JUSTAMERE 1118 CASH 665P  
ATLASTA ELLEN ERICA 74Y 1620415  
ATLASTA ELLEN ERICA 62N

KMK ALLIANCE 6595 187 AMF CAF NHF DDF  
BLINDA OF CONANGA 004  
WOODHILL ADMIRAL 77K AMF CAF NHF DDF  
BLUE CASH OF CONANGA 6020 CAF

EXAR BIG TIMBER 1118  
REMITALL KEEPSAKE 143L  
DMM STOCKMAN 106J  
ATLASTA ELLEN 2H

CARCASS	
MARB	5.55
BF	8.57
REA	11.80
%LMY	59.58

ACT. BW	ACT. WW	ADJ. 205	ADJ. 365	EPDS				
				BW	WW	YW	MILK	TM
68	663	650	1305	+0.9 P+%	+46 P+%	+89 P+%	+30 P	-

## 44 BROOKMORE CONCENSUS 157A

MALE JVJ 157A 1752735 FEBRUARY 04 2013

CONNEALY CONSENSUS  
CONNEALY CONSENSUS 7229 CAF DDF 1593730  
BLUE LILLY OF CONANGA 16 CAF

S A V NET WORTH 4200 AMF CAF NHF DDF  
BROOKMORE ENCHANTRESS 193W 1514078  
BROOKMORE ENCHANTRESS 151P

KMK ALLIANCE 6595 187 AMF CAF NHF DDF  
BLINDA OF CONANGA 004  
WOODHILL ADMIRAL 77K AMF CAF NHF DDF  
BLUE CASH OF CONANGA 6020 CAF

S A V 8180 TRAVELER 004 DMF DMF AMF CAF NHF OSF DDF  
S A V MAY 2410  
BUSHS GRAND DESIGN AMF CAF NHF DDF  
BROOKMORE ENCHANTRESS 12M

CARCASS	
MARB	4.70
BF	6.67
REA	12.09
%LMY	61.76

ACT. BW	ACT. WW	ADJ. 205	ADJ. 365	EPDS				
				BW	WW	YW	MILK	TM
82	796	708	1333	+3.9 37%	+57 29%	+97 24%	+28 19%	+57

*From the Vet. . .*

Welcome to the 19th Annual Cattleman's Connection Sale. I have had the privilege of working with Brookmore Angus for more than 20 years. One of my jobs within this herd is to maintain the overall health status of the herd. We have long since moved from concentrating on individual sick animals to focusing on the overall general health of the entire herd. The health program followed for the bulls includes vaccination with Bovishield 4 FP and Ultrabac 7-S on the way to pasture & boosting at weaning time. Dectomax pour-on is given both spring & fall. One Shot vaccine is also given in the fall. As these bulls are introduced to their new herds, I would strongly recommend they be boosted with these vaccines or converted to the new herds' vaccination program.

The majority of bulls presented for sale are AI sired. They are the result of an immense amount of effort in an intensive AI & synchronization program, all done to present some of the best bulls you will see in one group anywhere. These bulls have been selected from approximately 160 bull calves and fed a high plane of nutrition and minerals to optimize growth and fertility.

Breeding Soundness Evaluations include scrotal measures, semen evaluation and structural evaluation. There are three possible outcomes to the evaluation.

1) Satisfactory:

- a) scrotal size is at or above breed standards for the age of the bull. **\*\* (we use actual measures not adjusted for age) \*\***
- b) Semen evaluation has shown 70% or more of sperm are normal with good motility.
- c) The bull is structurally sound for breeding.

2) Deferred Decision:

- a) scrotal size is at or above breed standards for the age of the bull.
- b) Semen evaluation shows less than 70% normal sperm and/or motility is suspect.
- c) The bull is structurally sound for breeding.

3) Unsatisfactory: Don't worry; these bulls don't come to the sale.

Note: Deferred Decision bulls usually improve with age. As we follow these bulls through each spring, all but a few test Satisfactory as they gain maturity. These Decision Deferred bulls are presented for sale with a full breeder guarantee behind them. Buy with confidence.

These bulls have been fed very well to get them looking so impressive. Once they hit pasture expect them to lose some condition as they become active breeders and adapt to a pasture ration. A 60 day breeding season with up to 20 females is a good first year expectation. For a more intense breeding program, I would recommend supplemental feeding to maintain condition. Remember, these bulls are still growing so look after them during and after the breeding season.

Dr. Trevor Shamanski, Brandon Hills Veterinary Clinic

# CATTLEMAN'S CONNECTION ANGUS BULL SALE 2014



**LOT 45**  
**BROOKMORE**  
**ABERDEEN 14A**

**45**

## BROOKMORE ABERDEEN 14A

MALE JVJ 14A 1753104 JANUARY 10 2013

C R A BEXTOR 872 5205 608 AMF CAF NHF DDF  
TC ABERDEEN 759 AMF CAF NHF DDF **1485453**  
TC BLACKBIRD 4034 CAF

B A R EXT TRAVELER 205 DMF AMF CAF NHF DDF  
CRA LADY JAYE 608 498 S EASY  
BON VIEW NEW DESIGN 208 AMF CAC NHF DDF  
TC BLACKBIRD 1013

CARCASS	
MARB	4.30
BF	7.14
REA	14.12
%LMY	62.92

SITZ UPWARD 307R DMF AMF CAF NHF DDF  
BROOKMORE HEROINE 210Y **1603931**  
BROOKMORE HEROINE 110U

CONNELLY ONWARD DMF AMF CAF NHF DDF  
SITZ HENRIETTA PRIDE 81M  
S A V 004 DENSITY 4336 AMF CAF NHF DDF  
BROOKMORE HEROINE 284R

ACT. BW	ACT. WW	ADJ. 205	ADJ. 365	EPDS								
				BW	WW	YW	MILK	TM				
86	850	751	1522	+3.9	37%	+61	28%	+112	24%	+37	21%	+68



**LOT 46 - BROOKMORE ABERDEEN 6A**

**46**

## BROOKMORE ABERDEEN 6A

MALE JVJ 6A 1753059 JANUARY 07 2013

C R A BEXTOR 872 5205 608 AMF CAF NHF DDF  
TC ABERDEEN 759 AMF CAF NHF DDF **1485453**  
TC BLACKBIRD 4034 CAF

B A R EXT TRAVELER 205 DMF AMF CAF NHF DDF  
CRA LADY JAYE 608 498 S EASY  
BON VIEW NEW DESIGN 208 AMF CAC NHF DDF  
TC BLACKBIRD 1013

CARCASS	
MARB	5.00
BF	7.71
REA	13.92
%LMY	62.18

S A V BISMARCK 5682 AMF CAF NHF DDF  
BROOKMORE MAIDEN 4Y **1603984**  
BROOKMORE MAIDEN 130W

G A R GRID MAKER AMF CAF NHF DDF  
S A V ABIGALE 0451  
QUAKER HILL OBJECTIVE 3J15 AMF CAF NHF DDF  
BROOKMORE MAIDEN 221P

ACT. BW	ACT. WW	ADJ. 205	ADJ. 365	EPDS								
				BW	WW	YW	MILK	TM				
78	828	726	1295	+0.9	37%	+61	28%	+101	24%	+32	21%	+63

## TC ABERDEEN 759

**BW +0.8 WW +56 YW +102 Milk +37 TM +65 SC: +0.53**

TC Aberdeen 759 sires low birth weight, attractive structurally correct cattle. A breed leader in maternal traits, docility and udder quality. An Elite Carcass Merit sire, a bull with performance, style and calving ease.

**7 SONS & 3 GRANDSONS SELL**





# CATTLEMAN'S CONNECTION ANGUS BULL SALE 2014



LOT 47 - BROOKMORE ABERDEEN 12A



LOT 49 - BROOKMORE ABERDEEN 37A

## 47 BROOKMORE ABERDEEN 12A

MALE JVJ 12A 1753063 JANUARY 09 2013

C R A BEXTOR 872 5205 608 AMF CAF NHF DDF  
**TC ABERDEEN 759** AMF CAF NHF DDF **1485453**  
 TC BLACKBIRD 4034 CAF

S A V BISMARCK 5682 AMF CAF NHF DDF  
**BROOKMORE MARY 25Y 1604001**  
 BROOKMORE MARY 209W

B A R EXT TRAVELER 205 DMF AMF CAF NHF DDF  
 CRA LADY JAYE 608 498 S EASY  
 BON VIEW NEW DESIGN 208 AMF CAC NHF DDF  
 TC BLACKBIRD 1013

G A R GRID MAKER AMF CAF NHF DDF  
 S A V ABIGALE 0451  
 K C F BENNETT TOTAL AMF CAF NHF DDF  
 BROOKMORE MARY 90M

CARCASS	
MARB	4.60
BF	7.62
REA	13.06
%LMY	61.57

ACT. BW	ACT. WW	ADJ. 205	ADJ. 365	EPDS								
				BW	WW	YW	MILK	TM				
68	825	725	1270	-0.2	37%	+58	28%	+102	23%	+32	21%	+61

## 48 BROOKMORE ABERDEEN 30A

MALE JVJ 30A 1753100 JANUARY 13 2013

C R A BEXTOR 872 5205 608 AMF CAF NHF DDF  
**TC ABERDEEN 759** AMF CAF NHF DDF **1485453**  
 TC BLACKBIRD 4034 CAF

SITZ UPWARD 307R DMF AMF CAF NHF DDF  
**BROOKMORE ALETA 193Y 1603608**  
 BROOKMORE ALETA 164N

B A R EXT TRAVELER 205 DMF AMF CAF NHF DDF  
 CRA LADY JAYE 608 498 S EASY  
 BON VIEW NEW DESIGN 208 AMF CAC NHF DDF  
 TC BLACKBIRD 1013

CONNEALY ONWARD DMF AMF CAF NHF DDF  
 SITZ HENRIETTA PRIDE 81M  
 BON VIEW NEW DESIGN 878 AMF CAF NHF DDF  
 BROOKMORE ALETA 56L

CARCASS	
MARB	5.50
BF	5.71
REA	13.44
%LMY	63.83

ACT. BW	ACT. WW	ADJ. 205	ADJ. 365	EPDS								
				BW	WW	YW	MILK	TM				
72	788	706	1367	+0.9	37%	+56	28%	+100	24%	+34	21%	+62

## 49 BROOKMORE ABERDEEN 37A

MALE JVJ 37A 1753070 JANUARY 14 2013

C R A BEXTOR 872 5205 608 AMF CAF NHF DDF  
**TC ABERDEEN 759** AMF CAF NHF DDF **1485453**  
 TC BLACKBIRD 4034 CAF

S A V BISMARCK 5682 AMF CAF NHF DDF  
**BROOKMORE MAIDEN 81Y 1603926**  
 BROOKMORE MAIDEN 72U

B A R EXT TRAVELER 205 DMF AMF CAF NHF DDF  
 CRA LADY JAYE 608 498 S EASY  
 BON VIEW NEW DESIGN 208 AMF CAC NHF DDF  
 TC BLACKBIRD 1013

G A R GRID MAKER AMF CAF NHF DDF  
 S A V ABIGALE 0451  
 SITZ ALLIANCE 6595 DMF AMF CAF NHF DDF  
 BROOKMORE MAIDEN 114R

CARCASS	
MARB	4.75
BF	5.75
REA	13.41
%LMY	63.77

ACT. BW	ACT. WW	ADJ. 205	ADJ. 365	EPDS								
				BW	WW	YW	MILK	TM				
72	788	708	1311	+1.1	37%	+56	28%	+102	24%	+33	21%	+61

## 50 BROOKMORE ABERDEEN 40A

MALE JVJ 40A 1753110 JANUARY 15 2013

C R A BEXTOR 872 5205 608 AMF CAF NHF DDF  
**TC ABERDEEN 759** AMF CAF NHF DDF **1485453**  
 TC BLACKBIRD 4034 CAF

BROOKMORE NEUTRON 72R  
**BROOKMORE ROSEBUD 243Y 1603800**  
 BROOKMORE ROSEBUD 222S

B A R EXT TRAVELER 205 DMF AMF CAF NHF DDF  
 CRA LADY JAYE 608 498 S EASY  
 BON VIEW NEW DESIGN 208 AMF CAC NHF DDF  
 TC BLACKBIRD 1013

S A NEUTRON 377 AMF CAF NHF DDF  
 BROOKMORE TIBBIE 57M  
 SITZ ALLIANCE 6595 DMF AMF CAF NHF DDF  
 LENLOOK ROSEBUD 25M

CARCASS	
MARB	5.60
BF	5.71
REA	12.99
%LMY	63.46

ACT. BW	ACT. WW	ADJ. 205	ADJ. 365	EPDS								
				BW	WW	YW	MILK	TM				
80	725	663	1299	+2.9	36%	+48	28%	+90	23%	+27	19%	+51

## 51 BROOKMORE ABERDEEN 51A

MALE JVJ 51A 1753090 JANUARY 17 2013

C R A BEXTOR 872 5205 608 AMF CAF NHF DDF  
**TC ABERDEEN 759** AMF CAF NHF DDF **1485453**  
 TC BLACKBIRD 4034 CAF

SITZ UPWARD 307R DMF AMF CAF NHF DDF  
**BROOKMORE ALETA 145Y 1633901**  
 BROOKMORE ALETA 172T CAF

B A R EXT TRAVELER 205 DMF AMF CAF NHF DDF  
 CRA LADY JAYE 608 498 S EASY  
 BON VIEW NEW DESIGN 208 AMF CAC NHF DDF  
 TC BLACKBIRD 1013

CONNEALY ONWARD DMF AMF CAF NHF DDF  
 SITZ HENRIETTA PRIDE 81M  
 S A F 598 BANDO 5175 AMF CAC DDF  
 BROOKMORE ENCHANTRESS 26P

CARCASS	
MARB	5.45
BF	9.05
REA	14.22
%LMY	61.05

ACT. BW	ACT. WW	ADJ. 205	ADJ. 365	EPDS								
				BW	WW	YW	MILK	TM				
84	754	690	1460	+3.5	37%	+59	28%	+108	24%	+34	21%	+64



LOT 51 - BROOKMORE ABERDEEN 51A

# CATTLEMAN'S CONNECTION ANGUS BULL SALE 2014



LOT 52 - BROOKMORE ABERDEEN 226A

## 52

### BROOKMORE ABERDEEN 226A

MALE JVJ 226A 1753103 MARCH 05 2013

TC ABERDEEN 759 AMF CAF NHF DDF  
**BROOKMORE ABERDEEN 8Y 1603986**  
 BROOKMORE PRINCESS 135W

S A V FINAL ANSWER 0035 AMF CAF NHF DDF  
**BROOKMORE TIBBIE 207Y 1603912**  
 BROOKMORE TIBBIE 242T AMF

C R A BEXTOR 872 5205 608 AMF CAF NHF DDF  
 TC BLACKBIRD 4034 CAF  
 S A V 004 DENSITY 4336 AMF CAF NHF DDF  
 BROOKMORE PRINCESS 12N

SITZ TRAVELER 8180 AMF CAF NHF DDF  
 S A V EMULOUS 8145 CAF  
 BROOKMORE DIRECTION 208R  
 BROOKMORE TIBBIE 63R CAC

CARCASS	
MARB	4.80
BF	7.14
REA	11.22
%LMY	60.56

ACT. BW	ACT. WW	ADJ. 205	ADJ. 365	EPDS								
				BW	WW	YW	MILK	TM				
70	646	704	1339	+0.6	33%	+52	22%	+88	14%	+25	11%	+51



LOT 54 - BROOKMORE ABERDEEN 249A

## 53

### BROOKMORE ABERDEEN 233A

MALE JVJ 233A 1753076 MARCH 08 2013

TC ABERDEEN 759 AMF CAF NHF DDF  
**BROOKMORE ABERDEEN 8Y 1603986**  
 BROOKMORE PRINCESS 135W

SITZ UPWARD 307R DMF AMF CAF NHF DDF  
**BROOKMORE DAISY 93Y 1603839**  
 BROOKMORE DAISY 47T

C R A BEXTOR 872 5205 608 AMF CAF NHF DDF  
 TC BLACKBIRD 4034 CAF  
 S A V 004 DENSITY 4336 AMF CAF NHF DDF  
 BROOKMORE PRINCESS 12N

CONNELLY ONWARD DMF AMF CAF NHF DDF  
 SITZ HENRIETTA PRIDE 81M  
 S A V 004 DENSITY 4336 AMF CAF NHF DDF  
 BABA DAISY 24L

CARCASS	
MARB	4.60
BF	6.19
REA	12.75
%LMY	62.78

ACT. BW	ACT. WW	ADJ. 205	ADJ. 365	EPDS								
				BW	WW	YW	MILK	TM				
78	680	745	1439	+2.1	33%	+55	22%	+99	14%	+29	11%	+57

## 54

### BROOKMORE ABERDEEN 249A

MALE JVJ 249A 1752728 MARCH 15 2013

TC ABERDEEN 759 AMF CAF NHF DDF  
**BROOKMORE ABERDEEN 8Y 1603986**  
 BROOKMORE PRINCESS 135W

S A V 004 DENSITY 4336 AMF CAF NHF DDF  
**BROOKMORE ROSE 167W 1514028**  
 BROOKMORE ROSE 80P CAF

C R A BEXTOR 872 5205 608 AMF CAF NHF DDF  
 TC BLACKBIRD 4034 CAF  
 S A V 004 DENSITY 4336 AMF CAF NHF DDF  
 BROOKMORE PRINCESS 12N

S A V 8180 TRAVELER 004 DMF DMF AMF CAF NHF OSF DDF  
 S A V MAY 7238 CAF DDF  
 S A F 598 BANDO 5175 AMF CAC DDF  
 BROOKMORE ROSE 34L

CARCASS	
MARB	4.75
BF	6.22
REA	12.56
%LMY	62.60

ACT. BW	ACT. WW	ADJ. 205	ADJ. 365	EPDS								
				BW	WW	YW	MILK	TM				
88	677	705	1299	+3.9	33%	+50	22%	+90	15%	+27	12%	+52

*Brookmore Angus Bulls  
 Recommended for Heifers*

OUT OF FIRST CALF HEIFERS:

Lot #  
 38, 42, 46, 48, 49, 50, 51,  
 52, 53, 55, 56, 57, 58, 59,  
 60, 61, 62, 63, 64, 65, 66

OUT OF COWS:

Lot #  
 2, 3, 19, 21, 22, 25,  
 31, 32, 36, 38,  
 67, 68, 74, 76, 78,  
 81, 83, 84, 85, 92, 94

**WHAT DOES OUR  
 CARCASS DATA MEAN?**

Explanation on page 39 of this catalog  
 - results from bull scans -  
 January 18, 2014

# CATTLEMAN'S CONNECTION ANGUS BULL SALE 2014

## 55 BROOKMORE RIGHT ANSWER 7A

MALE JVJ 7A 1753060 JANUARY 07 2013

S A V FINAL ANSWER 0035 AMF CAF NHF DDF  
**CONNEALY RIGHT ANSWER 746** AMF CAF NHF DDF 1547517  
 HAPPY DELL OF CONANGA 262

SITZ TRAVELER 8180 AMF CAF NHF DDF  
 S A V EMULOUS 8145 CAF  
 HYLINE RIGHT TIME 338 AMF CAF NHF DDF  
 HAPPY DAZE OF CONANGA 6260

CARCASS	
MARB	5.00
BF	7.64
REA	14.13
%LMY	62.42

S A V BISMARCK 5682 AMF CAF NHF DDF  
**BROOKMORE DAISY 5Y** 1603991  
 BROOKMORE DAISY 163W

G A R GRID MAKER AMF CAF NHF DDF  
 S A V ABIGALE 0451  
 S A V HERITAGE 6295 AMF CAF NHF DDF  
 BROOKMORE DAISY 204S

ACT. BW	ACT. WW	ADJ. 205	ADJ. 365	EPDS								
				BW	WW	YW	MILK	TM				
70	757	670	1361	+0.3	37%	+61	28%	+109	24%	+31	20%	+62



LOT 55 - BROOKMORE RIGHT ANSWER 7A

## 56 BROOKMORE RIGHT ANSWER 10A

MALE JVJ 10A 1753080 JANUARY 09 2013

S A V FINAL ANSWER 0035 AMF CAF NHF DDF  
**CONNEALY RIGHT ANSWER 746** AMF CAF NHF DDF 1547517  
 HAPPY DELL OF CONANGA 262

SITZ TRAVELER 8180 AMF CAF NHF DDF  
 S A V EMULOUS 8145 CAF  
 HYLINE RIGHT TIME 338 AMF CAF NHF DDF  
 HAPPY DAZE OF CONANGA 6260

CARCASS	
MARB	5.10
BF	8.12
REA	11.44
%LMY	59.75

SITZ UPWARD 307R DMF AMF CAF NHF DDF  
**BROOKMORE BLACKCAP 105Y** 1603919  
 ATLASTA BLACKCAP 12U

CONNEALY ONWARD DMF AMF CAF NHF DDF  
 SITZ HENRIETTA PRIDE 81M  
 W C C SPECIAL DESIGN L309 AMF CAF NHF DDF  
 ATLASTA BLACKCAP 114M

ACT. BW	ACT. WW	ADJ. 205	ADJ. 365	EPDS								
				BW	WW	YW	MILK	TM				
78	741	663	1292	+2.6	37%	+60	28%	+110	23%	+33	20%	+63



LOT 56 - BROOKMORE RIGHT ANSWER 10A

## 57 BROOKMORE RIGHT ANSWER 13A

MALE JVJ 13A 1753109 JANUARY 10 2013

S A V FINAL ANSWER 0035 AMF CAF NHF DDF  
**CONNEALY RIGHT ANSWER 746** AMF CAF NHF DDF 1547517  
 HAPPY DELL OF CONANGA 262

SITZ TRAVELER 8180 AMF CAF NHF DDF  
 S A V EMULOUS 8145 CAF  
 HYLINE RIGHT TIME 338 AMF CAF NHF DDF  
 HAPPY DAZE OF CONANGA 6260

CARCASS	
MARB	5.75
BF	9.07
REA	14.32
%LMY	61.12

BROOKMORE DENSITY 111T  
**BROOKMORE ANNE 227Y** 1603575  
 BROOKMORE ANNE 126M

S A V 004 DENSITY 4336 AMF CAF NHF DDF  
 BROOKMORE LADY JANE 224N  
 G D A R ROLLS ROYCE 203  
 GREENBUSH ANNE 37J

ACT. BW	ACT. WW	ADJ. 205	ADJ. 365	EPDS								
				BW	WW	YW	MILK	TM				
74	822	727	1451	+1.5	36%	+65	27%	+109	22%	+29	18%	+62

*Join us for lunch  
at 11:30 am*

## CONNEALY RIGHT ANSWER 746

**BW -0.3 WW +67 YW +121 Milk +38 TM +72 SC: +1.11**

BW: 76 lbs. Adj. 205D: 882 lbs. Adj. 365D: 1506 lbs.

Connealy Right Answer 746, is a leading calving ease sire with excellent EPDs in the top 3% for weaning weight, top 2% yearling weight, top 2% for milk and top 20% for marbling. A great combination of two of the breeds greats, Final Answer and Right Time.

**6 SONS SELL**



# CATTLEMAN'S CONNECTION ANGUS BULL SALE 2014



LOT 58 - BROOKMORE RIGHT ANSWER 28A

## 58 BROOKMORE RIGHT ANSWER 28A

MALE JVJ 28A 1753082 JANUARY 12 2013

S A V FINAL ANSWER 0035 AMF CAF NHF DDF  
**CONNEALY RIGHT ANSWER 746** AMF CAF NHF DDF 1547517  
 HAPPY DELL OF CONANGA 262

SITZ TRAVELER 8180 AMF CAF NHF DDF  
 S A V EMULOUS 8145 CAF  
 HYLINE RIGHT TIME 338 AMF CAF NHF DDF  
 HAPPY DAZE OF CONANGA 6260

CARCASS	
MARB	4.85
BF	4.29
REA	14.73
%LMY	66.34

SITZ UPWARD 307R DMF AMF CAF NHF DDF  
**BROOKMORE TIBBIE 119Y** 1603836  
 GREENBUSH TIBBIE 21T

CONNEALY ONWARD DMF AMF CAF NHF DDF  
 SITZ HENRIETTA PRIDE 81M  
 S A V 004 DENSITY 4336 AMF CAF NHF DDF  
 GREENBUSH TIBBIE 9N

ACT. BW	ACT. WW	ADJ. 205	ADJ. 365	EPDS				
				BW	WW	YW	MILK	TM
80	779	699	1331	+2.9 37%	+61 28%	+110 23%	+34 20%	+65



LOT 59 - BROOKMORE RIGHT ANSWER 29A

## 59 BROOKMORE RIGHT ANSWER 29A

MALE JVJ 29A 1753077 JANUARY 12 2013

S A V FINAL ANSWER 0035 AMF CAF NHF DDF  
**CONNEALY RIGHT ANSWER 746** AMF CAF NHF DDF 1547517  
 HAPPY DELL OF CONANGA 262

SITZ TRAVELER 8180 AMF CAF NHF DDF  
 S A V EMULOUS 8145 CAF  
 HYLINE RIGHT TIME 338 AMF CAF NHF DDF  
 HAPPY DAZE OF CONANGA 6260

CARCASS	
MARB	5.55
BF	5.75
REA	11.68
%LMY	62.37

S A V BISMARCK 5682 AMF CAF NHF DDF  
**BROOKMORE HEROINE 96Y** 1603924  
 BROOKMORE HEROINE 52U

G A R GRID MAKER AMF CAF NHF DDF  
 S A V ABIGALE 0451  
 S A V 004 DENSITY 4336 AMF CAF NHF DDF  
 BROOKMORE HEROINE 59R

ACT. BW	ACT. WW	ADJ. 205	ADJ. 365	EPDS				
				BW	WW	YW	MILK	TM
80	895	789	1261	+2.1 37%	+67 28%	+111 23%	+33 20%	+67



LOT 60 - BROOKMORE RIGHT ANSWER 43A

## 60 BROOKMORE RIGHT ANSWER 43A

MALE JVJ 43A 1753102 JANUARY 16 2013

S A V FINAL ANSWER 0035 AMF CAF NHF DDF  
**CONNEALY RIGHT ANSWER 746** AMF CAF NHF DDF 1547517  
 HAPPY DELL OF CONANGA 262

SITZ TRAVELER 8180 AMF CAF NHF DDF  
 S A V EMULOUS 8145 CAF  
 HYLINE RIGHT TIME 338 AMF CAF NHF DDF  
 HAPPY DAZE OF CONANGA 6260

CARCASS	
MARB	5.10
BF	7.62
REA	12.92
%LMY	61.46

SITZ UPWARD 307R DMF AMF CAF NHF DDF  
**BROOKMORE RUBY 203Y** 1603534  
 BROOKMORE RUBY 30M

CONNEALY ONWARD DMF AMF CAF NHF DDF  
 SITZ HENRIETTA PRIDE 81M  
 V D A R LUCY'S BOY AMF CAF NHF DDF  
 BROOKMORE RUBY 77K

ACT. BW	ACT. WW	ADJ. 205	ADJ. 365	EPDS				
				BW	WW	YW	MILK	TM
58	857	764	1367	-1.2 37%	+65 28%	+115 24%	+36 20%	+69

**WE STAND  
 BEHIND OUR BULLS**  
 All bulls are semen tested  
 & breeding soundness  
 evaluated

# CATTLEMAN'S CONNECTION ANGUS BULL SALE 2014



LOT 61  
BROOKMORE  
BISMARCK 19A

## 61 BROOKMORE BISMARCK 19A

MALE JVJ 19A 1753067 JANUARY 11 2013

G A R GRID MAKER AMF CAF NHF DDF  
S A V BISMARCK 5682 AMF CAF NHF DDF 1369591  
S A V ABIGALE 0451

S A V PIONEER 7301 AMF CAF NHF DDF  
BROOKMORE LENLOCK 53Y 1603721  
BROOKMORE LENLOCK 93R

G D A R TRAVELER 044 AMF CAF NHF DDF  
G A R PRECISION 2536 AMC NHF  
SCHOENES FIX IT 826 AMF CAF NHF DDF  
S A V ABIGALE 6062  
S A V FINAL ANSWER 0035 AMF CAF NHF DDF  
S A V BLACKBIRD 5297 CAC  
W C C SPECIAL DESIGN L309 AMF CAF NHF DDF  
BROOKMORE LENLOCK 140K

CARCASS	
MARB	5.35
BF	10.02
REA	13.96
%LMY	59.86

ACT.		ADJ.		EPDS								
BW	WW	205	365	BW	WW	YW	MILK	TM				
74	830	735	1403	+1.9	37%	+60	28%	+99	24%	+25	21%	+55



LOT 62 - BROOKMORE BISMARCK 22A

## 62 BROOKMORE BISMARCK 22A

MALE JVJ 22A 1753065 JANUARY 11 2013

G A R GRID MAKER AMF CAF NHF DDF  
S A V BISMARCK 5682 AMF CAF NHF DDF 1369591  
S A V ABIGALE 0451

S A V PIONEER 7301 AMF CAF NHF DDF  
BROOKMORE ALETA 45Y 1603714  
BROOKMORE ALETA 12R

G D A R TRAVELER 044 AMF CAF NHF DDF  
G A R PRECISION 2536 AMC NHF  
SCHOENES FIX IT 826 AMF CAF NHF DDF  
S A V ABIGALE 6062  
S A V FINAL ANSWER 0035 AMF CAF NHF DDF  
S A V BLACKBIRD 5297 CAC  
BUSHS GRAND DESIGN AMF CAF NHF DDF  
BROOKMORE ALETA 60N

CARCASS	
MARB	4.75
BF	8.18
REA	14.54
%LMY	62.20

ACT.		ADJ.		EPDS								
BW	WW	205	365	BW	WW	YW	MILK	TM				
76	849	750	1345	+2.0	37%	+60	28%	+104	24%	+28	21%	+58

## S A V BISMARCK 5682

**BW +0.3 WW +57 YW +97 Milk +26 TM +55 SC: +1.19**

BW: 76 lbs. Adj. 205D: 884 lbs. Adj. 365D: 1596 lbs.

A very popular calving ease sire that uniquely stamps his low birth weight, early gestation progeny with extra rib eye area, muscle shape and style. His sons have performance; his daughters have great udder quality and optimum milk.

*9 SONS SELL*



# CATTLEMAN'S CONNECTION ANGUS BULL SALE 2014



LOT 63 - BROOKMORE BISMARCK 25A

## 63

### BROOKMORE BISMARCK 25A

MALE JVJ 25A 1753075 JANUARY 11 2013

G A R GRID MAKER AMF CAF NHF DDF  
**S A V BISMARCK 5682** AMF CAF NHF DDF 1369591  
 S A V ABIGALE 0451

TC ABERDEEN 759 AMF CAF NHF DDF  
**BROOKMORE ENCHANTRESS 90Y 1603918**  
 BROOKMORE ENCHANTRESS 1U

G D A R TRAVELER 044 AMF CAF NHF DDF  
 G A R PRECISION 2536 AMC NHF  
 SCHOENES FIX IT 826 AMF CAF NHF DDF  
 S A V ABIGALE 6062

C R A BEXTOR 872 5205 608 AMF CAF NHF DDF  
 TC BLACKBIRD 4034 CAF  
 CONNEALY FREIGHTLINER AMF CAF NHF  
 BROOKMORE ENCHANTRESS 42S

CARCASS	
MARB	5.10
BF	5.75
REA	13.38
%LMY	63.75

ACT. BW	ACT. WW	ADJ. 205	ADJ. 365	EPDS								
				BW	WW	YW	MILK	TM				
84	875	772	1440	+2.1	37%	+60	28%	+105	24%	+29	21%	+59

## 64

### BROOKMORE BISMARCK 27A

MALE JVJ 27A 1753085 JANUARY 12 2013

G A R GRID MAKER AMF CAF NHF DDF  
**S A V BISMARCK 5682** AMF CAF NHF DDF 1369591  
 S A V ABIGALE 0451

S A V FINAL ANSWER 0035 AMF CAF NHF DDF  
**BROOKMORE MAIDEN 131Y 1604002**  
 BROOKMORE MAIDEN 213W

G D A R TRAVELER 044 AMF CAF NHF DDF  
 G A R PRECISION 2536 AMC NHF  
 SCHOENES FIX IT 826 AMF CAF NHF DDF  
 S A V ABIGALE 6062

SITZ TRAVELER 8180 AMF CAF NHF DDF  
 S A V EMULOUS 8145 CAF  
 BROOKMORE DENSITY 111T  
 BROOKMORE MAIDEN 38R

CARCASS	
MARB	5.35
BF	9.60
REA	13.37
%LMY	59.80

ACT. BW	ACT. WW	ADJ. 205	ADJ. 365	EPDS								
				BW	WW	YW	MILK	TM				
60	776	692	1347	-1.7	37%	+61	28%	+100	23%	+26	20%	+57



LOT 64 - BROOKMORE BISMARCK 27A

## 65

### BROOKMORE BISMARCK 113A

MALE JVJ 113A 1753058 JANUARY 31 2013

G A R GRID MAKER AMF CAF NHF DDF  
**S A V BISMARCK 5682** AMF CAF NHF DDF 1369591  
 S A V ABIGALE 0451

S A V FINAL ANSWER 0035 AMF CAF NHF DDF  
**BROOKMORE HEROINE 3Y 1603998**  
 BROOKMORE HEROINE 192W

G D A R TRAVELER 044 AMF CAF NHF DDF  
 G A R PRECISION 2536 AMC NHF  
 SCHOENES FIX IT 826 AMF CAF NHF DDF  
 S A V ABIGALE 6062

SITZ TRAVELER 8180 AMF CAF NHF DDF  
 S A V EMULOUS 8145 CAF  
 MOHLEN DYNAMITE 1356 AMF CAF NHF DDF  
 BROOKMORE HEROINE 263P

CARCASS	
MARB	3.90
BF	5.27
REA	12.89
%LMY	63.83

ACT. BW	ACT. WW	ADJ. 205	ADJ. 365	EPDS								
				BW	WW	YW	MILK	TM				
64	689	663	1172	-1.0	37%	+57	28%	+97	24%	+23	21%	+52



LOT 66 - BROOKMORE BISMARCK 135A

## 66

### BROOKMORE BISMARCK 135A

MALE JVJ 135A 1753105 FEBRUARY 02 2013

G A R GRID MAKER AMF CAF NHF DDF  
**S A V BISMARCK 5682** AMF CAF NHF DDF 1369591  
 S A V ABIGALE 0451

SITZ UPWARD 307R DMF AMF CAF NHF DDF  
**BROOKMORE KARAMA 211Y 1603921**  
 BROOKMORE KARAMA 16U

G D A R TRAVELER 044 AMF CAF NHF DDF  
 G A R PRECISION 2536 AMC NHF  
 SCHOENES FIX IT 826 AMF CAF NHF DDF  
 S A V ABIGALE 6062

CONNEALY ONWARD DMF AMF CAF NHF DDF  
 SITZ HENRIETTA PRIDE 81M  
 QUAKER HILL OBJECTIVE 3J15 AMF CAF NHF DDF  
 BROOKMORE KARAMA 24S

CARCASS	
MARB	4.50
BF	5.75
REA	12.28
%LMY	62.86

ACT. BW	ACT. WW	ADJ. 205	ADJ. 365	EPDS								
				BW	WW	YW	MILK	TM				
68	785	749	1404	-0.1	37%	+65	28%	+110	24%	+30	21%	+63

# CATTLEMAN'S CONNECTION ANGUS BULL SALE 2014

## 67 BROOKMORE BISMARCK 153A

MALE JVJ 153A 1752714 TWIN FEBRUARY 04 2013

G A R GRID MAKER AMF CAF NHF DDF  
**S A V BISMARCK 5682** AMF CAF NHF DDF 1369591  
 S A V ABIGALE 0451

S A V FINAL ANSWER 0035 AMF CAF NHF DDF  
**BROOKMORE MAIDEN 82W** 1527549  
 BROOKMORE MAIDEN 114R

G D A R TRAVELER 044 AMF CAF NHF DDF  
 G A R PRECISION 2536 AMC NHF  
 SCHOENES FIX IT 826 AMF CAF NHF DDF  
 S A V ABIGALE 6062

SITZ TRAVELER 8180 AMF CAF NHF DDF  
 S A V EMULOUS 8145 CAF  
 MVF STOCKMAN 45H  
 BROOKMORE MAIDEN 155J

CARCASS	
MARB	4.40
BF	5.27
REA	11.72
%LMY	62.88

ACT. BW	ACT. WW	ADJ. 205	ADJ. 365	EPDS				
				BW	WW	YW	MILK	TM
70	744	662	1185	+1.2 P	+58 P	+95 P	+25 P	-



LOT 67 - BROOKMORE BISMARCK 153A

## 68 BROOKMORE BISMARCK 154A

MALE JVJ 154A 1752715 TWIN FEBRUARY 04 2013

G A R GRID MAKER AMF CAF NHF DDF  
**S A V BISMARCK 5682** AMF CAF NHF DDF 1369591  
 S A V ABIGALE 0451

S A V FINAL ANSWER 0035 AMF CAF NHF DDF  
**BROOKMORE MAIDEN 82W** 1527549  
 BROOKMORE MAIDEN 114R

G D A R TRAVELER 044 AMF CAF NHF DDF  
 G A R PRECISION 2536 AMC NHF  
 SCHOENES FIX IT 826 AMF CAF NHF DDF  
 S A V ABIGALE 6062

SITZ TRAVELER 8180 AMF CAF NHF DDF  
 S A V EMULOUS 8145 CAF  
 MVF STOCKMAN 45H  
 BROOKMORE MAIDEN 155J

CARCASS	
MARB	4.50
BF	6.67
REA	14.58
%LMY	63.79

ACT. BW	ACT. WW	ADJ. 205	ADJ. 365	EPDS				
				BW	WW	YW	MILK	TM
72	739	658	1317	+1.2 P	+58 P	+95 P	+25 P	



LOT 68 - BROOKMORE BISMARCK 154A

## 69 BROOKMORE BISMARCK 168A

MALE JVJ 168A 1752657 FEBRUARY 06 2013

G A R GRID MAKER AMF CAF NHF DDF  
**S A V BISMARCK 5682** AMF CAF NHF DDF 1369591  
 S A V ABIGALE 0451

S A V NET WORTH 4200 AMF CAF NHF DDF  
**BROOKMORE LENLOCK 64U** 1441488  
 BROOKMORE LENLOCK 93R

G D A R TRAVELER 044 AMF CAF NHF DDF  
 G A R PRECISION 2536 AMC NHF  
 SCHOENES FIX IT 826 AMF CAF NHF DDF  
 S A V ABIGALE 6062

S A V 8180 TRAVELER 004 DMF DMF AMF CAF NHF OSF DDF  
 S A V MAY 2410  
 W C C SPECIAL DESIGN L309 AMF CAF NHF DDF  
 BROOKMORE LENLOCK 140K

CARCASS	
MARB	5.40
BF	4.76
REA	12.58
%LMY	64.10

ACT. BW	ACT. WW	ADJ. 205	ADJ. 365	EPDS				
				BW	WW	YW	MILK	TM
88	729	640	1324	+3.4 37%	+49 29%	+87 24%	+20 22%	+45



LOT 69 - BROOKMORE BISMARCK 168A

**CAN'T MAKE THE SALE?**

**Remember -  
 your next bull is just  
 a phone call away!**

## CATTLEMAN'S CONNECTION

*Wintering Policy*

**WINTERING OF BULLS  
 IS FREE UNTIL APRIL 1ST, 2014.**

We ask purchasers to state their intentions  
 for wintering at the time of settlement.

*We strongly encourage you  
 to insure your bulls under this policy.*

# CATTLEMAN'S CONNECTION ANGUS BULL SALE 2014



**LOT 70**  
**BROOKMORE**  
**PIONEER 170A**

**70**

## BROOKMORE PIONEER 170A

MALE JVJ 170A 1752700 FEBRUARY 06 2013

S A V FINAL ANSWER 0035 AMF CAF NHF DDF  
S A V PIONEER 7301 AMF CAF NHF DDF 1481377  
S A V BLACKBIRD 5297 CAC

SITZ TRAVELER 8180 AMF CAF NHF DDF  
S A V EMULOUS 8145 CAF  
BOYD NEW DAY 8005 AMF CAF NHF DDF  
S A V BLACKBIRD 1082 CAC

CARCASS	
MARB	5.15
BF	7.64
REA	14.16
%LMY	62.45

BROOKMORE AVENGER 42P  
BROOKMORE TIBBIE 292U 1441408  
BROOKMORE TIBBIE 69N

PF 7215 AVENGER 0232  
BROOKMORE PRINCESS 59G  
G D A UNIVERSE 726G  
BROOKMORE TIBBIE 73K

ACT. BW	ACT. WW	ADJ. 205	ADJ. 365	EPDS								
				BW	WW	YW	MILK	TM				
80	835	730	1386	+2.5	37%	+59	28%	+105	23%	+24	20%	+54



**LOT 71 - BROOKMORE PIONEER 49A**

**71**

## BROOKMORE PIONEER 49A

MALE JVJ 49A 1752607 JANUARY 17 2013

S A V FINAL ANSWER 0035 AMF CAF NHF DDF  
S A V PIONEER 7301 AMF CAF NHF DDF 1481377  
S A V BLACKBIRD 5297 CAC

SITZ TRAVELER 8180 AMF CAF NHF DDF  
S A V EMULOUS 8145 CAF  
BOYD NEW DAY 8005 AMF CAF NHF DDF  
S A V BLACKBIRD 1082 CAC

CARCASS	
MARB	5.80
BF	10.49
REA	15.28
%LMY	60.44

TC FOREMAN 016  
BROOKMORE ENCHANTRESS 175S 1345658  
BROOKMORE ENCHANTRESS 190H

CONNELLY FOREFRONT AMF CAF NHF DDF  
TC PRIDE 8067  
EBON HILL EXTRA GOLD 3195  
BROOKMORE ENCHANTRESS 14B

ACT. BW	ACT. WW	ADJ. 205	ADJ. 365	EPDS								
				BW	WW	YW	MILK	TM				
92	885	722	1630	+3.9	38%	+57	29%	+97	24%	+23	22%	+52

## S A V PIONEER 7301

**BW +2.1 WW +60 YW +109 Milk +34 TM +64 SC: +1.32**

BW: 69 lbs. Adj. 205D: 965 lbs. Adj. 365D: 1466 lbs.

SAV 004 Pioneer combines ideal phenotype and outstanding EPDs. He has moderate birth weight, high growth spread, with rib eye area EPDs that are exceptional.

*8 SONS SELL*





# CATTLEMAN'S CONNECTION ANGUS BULL SALE 2014



LOT 73 - BROOKMORE PIONEER 129A



LOT 75 - BROOKMORE PIONEER 188A

## 72 BROOKMORE PIONEER 54A

MALE JVJ 54A 1752671 TWIN JANUARY 19 2013

S A V FINAL ANSWER 0035 AMF CAF NHF DDF  
**S A V PIONEER 7301** AMF CAF NHF DDF 1481377  
 S A V BLACKBIRD 5297 CAC

SITZ TRAVELER 8180 AMF CAF NHF DDF  
 S A V EMULOUS 8145 CAF  
 BOYD NEW DAY 8005 AMF CAF NHF DDF  
 S A V BLACKBIRD 1082 CAC

CARCASS	
MARB	5.30
BF	9.13
REA	15.22
%LMY	61.79

BUSHES STRUT 756 AMF CAF NHF DDF  
**BROOKMORE KARAMA 175U** 1441299  
 BROOKMORE KARAMA 161K

S A F STRATEGY 9015 AMF CAF NHF DDF  
 BUSHES LADY LA BELLE 457  
 BROOKMORE TOUCHSTONE 2F  
 BROOKMORE KARAMA 144G

ACT. BW	ACT. WW	ADJ. 205	ADJ. 365	EPDS				
				BW	WW	YW	MILK	TM
74	791	648	1324	+4.5 P	+55 P	+101 P	+24 P	-

## 75 BROOKMORE PIONEER 188A

MALE JVJ 188A 1752712 FEBRUARY 13 2013

S A V FINAL ANSWER 0035 AMF CAF NHF DDF  
**S A V PIONEER 7301** AMF CAF NHF DDF 1481377  
 S A V BLACKBIRD 5297 CAC

SITZ TRAVELER 8180 AMF CAF NHF DDF  
 S A V EMULOUS 8145 CAF  
 BOYD NEW DAY 8005 AMF CAF NHF DDF  
 S A V BLACKBIRD 1082 CAC

CARCASS	
MARB	5.00
BF	6.67
REA	15.51
%LMY	64.54

S A V 004 DENSITY 4336 AMF CAF NHF DDF  
**BROOKMORE TIBBIE 77W** 1513153  
 BROOKMORE TIBBIE 196H

S A V 8180 TRAVELER 004 DMF DWF AMF CAF NHF OSF DDF  
 S A V MAY 7238 CAF DDF  
 EBON HILL EXTRA GOLD 3195  
 BROOKMORE TIBBIE 93F

ACT. BW	ACT. WW	ADJ. 205	ADJ. 365	EPDS				
				BW	WW	YW	MILK	TM
84	778	716	1275	+3.1 37%	+54 28%	+95 24%	+27 22%	+54

## 73 BROOKMORE PIONEER 129A

MALE JVJ 129A 1752550 FEBRUARY 02 2013

S A V FINAL ANSWER 0035 AMF CAF NHF DDF  
**S A V PIONEER 7301** AMF CAF NHF DDF 1481377  
 S A V BLACKBIRD 5297 CAC

SITZ TRAVELER 8180 AMF CAF NHF DDF  
 S A V EMULOUS 8145 CAF  
 BOYD NEW DAY 8005 AMF CAF NHF DDF  
 S A V BLACKBIRD 1082 CAC

CARCASS	
MARB	5.75
BF	9.52
REA	13.64
%LMY	60.10

BENCHMARK MAGIC MAN 007  
**BROOKMORE HEROINE 17P** 1212299  
 BROOKMORE HEROINE 124M

EBON HILL MAGIC MAN 4197  
 STRATHISLA AUTUMN ROSE 80398  
 EBON HILL STOCKMAN 5595  
 BROOKMORE HEROINE 15F

ACT. BW	ACT. WW	ADJ. 205	ADJ. 365	EPDS				
				BW	WW	YW	MILK	TM
102	856	741	1549	+4.5 38%	+56 29%	+102 24%	+25 22%	+53

## 76 BROOKMORE PIONEER 191A

MALE JVJ 191A 1752562 FEBRUARY 13 2013

S A V FINAL ANSWER 0035 AMF CAF NHF DDF  
**S A V PIONEER 7301** AMF CAF NHF DDF 1481377  
 S A V BLACKBIRD 5297 CAC

SITZ TRAVELER 8180 AMF CAF NHF DDF  
 S A V EMULOUS 8145 CAF  
 BOYD NEW DAY 8005 AMF CAF NHF DDF  
 S A V BLACKBIRD 1082 CAC

CARCASS	
MARB	4.90
BF	7.17
REA	13.82
%LMY	62.66

VERMILION DATELINE 7078 AMF CAF NHF DDF  
**BROOKMORE ELINE 125P** 1212170  
 BROOKMORE ELINE 106K

CONNELLY DATELINE DDF  
 VERMILION BLACKBIRD 5044  
 G D A R ROLLS ROYCE 203  
 BROOKMORE ELINE 78D

ACT. BW	ACT. WW	ADJ. 205	ADJ. 365	EPDS				
				BW	WW	YW	MILK	TM
84	790	711	1412	+2.5 38%	+55 29%	+97 24%	+24 22%	+52

## 74 BROOKMORE PIONEER 174A

MALE JVJ 174A 1752578 FEBRUARY 07 2013

S A V FINAL ANSWER 0035 AMF CAF NHF DDF  
**S A V PIONEER 7301** AMF CAF NHF DDF 1481377  
 S A V BLACKBIRD 5297 CAC

SITZ TRAVELER 8180 AMF CAF NHF DDF  
 S A V EMULOUS 8145 CAF  
 BOYD NEW DAY 8005 AMF CAF NHF DDF  
 S A V BLACKBIRD 1082 CAC

CARCASS	
MARB	4.70
BF	5.27
REA	13.14
%LMY	64.03

MVF STOCKMAN 45H  
**BROOKMORE HEROINE 59R** 1293238  
 BROOKMORE HEROINE 23K

TC STOCKMAN 365  
 DODSWOOD ENCHANTRESS MAX-90  
 V D A R LUCYS BOY AMF CAF NHF DDF  
 BROOKMORE HEROINE 168H

ACT. BW	ACT. WW	ADJ. 205	ADJ. 365	EPDS				
				BW	WW	YW	MILK	TM
78	790	694	1247	+1.5 38%	+50 29%	+89 24%	+24 23%	+49

## 77 BROOKMORE PIONEER 201A

MALE JVJ 201A 1752579 FEBRUARY 17 2013

S A V FINAL ANSWER 0035 AMF CAF NHF DDF  
**S A V PIONEER 7301** AMF CAF NHF DDF 1481377  
 S A V BLACKBIRD 5297 CAC

SITZ TRAVELER 8180 AMF CAF NHF DDF  
 S A V EMULOUS 8145 CAF  
 BOYD NEW DAY 8005 AMF CAF NHF DDF  
 S A V BLACKBIRD 1082 CAC

CARCASS	
MARB	4.65
BF	8.12
REA	14.09
%LMY	61.90

MVF STOCKMAN 45H  
**BROOKMORE KARAMA 76R** 1293169  
 BROOKMORE KARAMA 130E

TC STOCKMAN 365  
 DODSWOOD ENCHANTRESS MAX-90  
 EARLY SUNSET EXTRA 30Z  
 BROOKMORE KARAMA 70T

ACT. BW	ACT. WW	ADJ. 205	ADJ. 365	EPDS				
				BW	WW	YW	MILK	TM
80	702	642	1199	+2.8 37%	+45 29%	+88 24%	+24 22%	+47

# CATTLEMAN'S CONNECTION ANGUS BULL SALE 2014



LOT 78 - BROOKMORE IMPRINT 96A



LOT 79 - BROOKMORE IMPRINT 90A

## 78

### BROOKMORE IMPRINT 96A

MALE JVJ 96A 1752703 JANUARY 27 2013

CONNELY IMPRESSION AMF CAF NHF DDF  
**CONNELY IMPRINT 8317** AMF CAF NHF 1659104  
 ELLINA OF CONANGA 868 7127

CONNELY REFLECTION AMF CAF NHF DDF  
 PEARL PAMMY OF CONANGA 194 CAF  
 G A R GRID MAKER AMF CAF NHF DDF  
 ELIGENCE PLUS OF CONANGA

CARCASS	
MARB	4.70
BF	7.64
REA	15.98
%LMY	63.92

K C F BENNETT TOTAL AMF CAF NHF DDF  
**BROOKMORE ALETA 25W** 1516111  
 BROOKMORE ALETA 172T CAF

SITZ ALLIANCE 6595 DMF AMF CAF NHF DDF  
 EXT OF CONANGA 6790  
 S A F 598 BANDO 5175 AMF CAC DDF  
 BROOKMORE ENCHANTRESS 26P

ACT. BW	ACT. WW	ADJ. 205	ADJ. 365	EPDS								
				BW	WW	YW	MILK	TM				
82	835	720	1459	+1.9	37%	+58	28%	+96	20%	+21	14%	+50

## 80

### BROOKMORE IMPRINT 111A

MALE JVJ 111A 1752534 JANUARY 31 2013

CONNELY IMPRESSION AMF CAF NHF DDF  
**CONNELY IMPRINT 8317** AMF CAF NHF 1659104  
 ELLINA OF CONANGA 868 7127

CONNELY REFLECTION AMF CAF NHF DDF  
 PEARL PAMMY OF CONANGA 194 CAF  
 G A R GRID MAKER AMF CAF NHF DDF  
 ELIGENCE PLUS OF CONANGA

CARCASS	
MARB	4.60
BF	6.22
REA	12.24
%LMY	62.34

BROOKMORE LANCER 32F  
**BROOKMORE MAIDEN 50M** 1135429  
 BROOKMORE MAIDEN 96U

MINBURN LANCER 22D  
 BROOKMORE ELINE 78D  
 MOUNTAIN VIEW CRACKER JACK 18R  
 BROOKMORE MAIDEN 20R

ACT. BW	ACT. WW	ADJ. 205	ADJ. 365	EPDS								
				BW	WW	YW	MILK	TM				
98	758	680	1436	+4.3	37%	+41	28%	+70	20%	+18	14%	+39

## 79

### BROOKMORE IMPRINT 90A

MALE JVJ 90A 1752526 JANUARY 26 2013

CONNELY IMPRESSION AMF CAF NHF DDF  
**CONNELY IMPRINT 8317** AMF CAF NHF 1659104  
 ELLINA OF CONANGA 868 7127

CONNELY REFLECTION AMF CAF NHF DDF  
 PEARL PAMMY OF CONANGA 194 CAF  
 G A R GRID MAKER AMF CAF NHF DDF  
 ELIGENCE PLUS OF CONANGA

CARCASS	
MARB	5.20
BF	5.71
REA	10.85
%LMY	61.72

ALBERDA TRAVELER 416 AMF CAF NHF DDF  
**BROOKMORE LADY JANE 137L** 1067776  
 BROOKMORE LADY JANE 56A

D H D TRAVELER 6807 AMF NHF  
 ALBERDA QUEEN KIMBERLY 222  
 PYRAMID BACK STREET 6W  
 BROOKMORE LADY JANE 68W

ACT. BW	ACT. WW	ADJ. 205	ADJ. 365	EPDS								
				BW	WW	YW	MILK	TM				
86	744	655	1351	+3.9	38%	+47	29%	+80	22%	+20	15%	+44

## 81

### BROOKMORE IMPRINT 128A

MALE JVJ 128A 1752540 FEBRUARY 02 2013

CONNELY IMPRESSION AMF CAF NHF DDF  
**CONNELY IMPRINT 8317** AMF CAF NHF 1659104  
 ELLINA OF CONANGA 868 7127

CONNELY REFLECTION AMF CAF NHF DDF  
 PEARL PAMMY OF CONANGA 194 CAF  
 G A R GRID MAKER AMF CAF NHF DDF  
 ELIGENCE PLUS OF CONANGA

CARCASS	
MARB	4.60
BF	5.75
REA	11.58
%LMY	62.29

PF 7215 AVENGER 0232  
**BROOKMORE DAISY 23N** 1186868  
 BROOKMORE DAISY 209H

WK APPEAL  
 ALGOMA GOLDEN SUMMER T112  
 EBON HILL EQUALIZER 49'96  
 MVBF DAISY 4A

ACT. BW	ACT. WW	ADJ. 205	ADJ. 365	EPDS								
				BW	WW	YW	MILK	TM				
78	672	581	1197	+2.2	37%	+43	28%	+75	21%	+16	14%	+38



## CONNELY IMPRINT 8317

**BW +2.6 WW +63 YW +100 Milk +22 TM +54 SC: +1.00**

BW: 82 lbs. Adj. 205D: 684 lbs. Adj. 365D: 1305 lbs.

Connealy Imprint 8317 is a bull whose physical design includes extra muscle, body length and functional feet and legs. In the top 10% for weaning weight, top 15% for yearling weight and top 20% for marbling.

**9 SONS SELL**

# CATTLEMAN'S CONNECTION ANGUS BULL SALE 2014



LOT 82 - BROOKMORE IMPRINT 91A



LOT 85 - BROOKMORE IMPRINT 149A

## 82 BROOKMORE IMPRINT 91A

MALE JVJ 91A 1752548 JANUARY 26 2013

CONNEALY IMPRESSION AMF CAF NHF DDF  
**CONNEALY IMPRINT 8317** AMF CAF NHF 1659104  
 ELLINA OF CONANGA 868 7127

CONNEALY REFLECTION AMF CAF NHF DDF  
 PEARL PAMMY OF CONANGA 194 CAF  
 G A R GRID MAKER AMF CAF NHF DDF  
 ELIGENCE PLUS OF CONANGA

CARCASS	
MARB	4.60
BF	4.76
REA	13.77
%LMY	65.07

BUSHES GRAND DESIGN AMF CAF NHF DDF  
**BROOKMORE ALETA 3P** 1212238  
 BROOKMORE ALETA 22M

BON VIEW NEW DESIGN 1407 AMF CAF NHF DDC  
 BUSHES LADY DIVIDEND 872  
 YOUNKIN TRIUMPH 4966 AMF CAF NHF DDF  
 BROOKMORE ALETA 120E

ACT. BW	ACT. WW	ADJ. 205	ADJ. 365	EPDS				
				BW	WW	YW	MILK	TM
98	764	646	1309	+4.6 36%	+49 28%	+81 21%	+19 14%	+44

## 85 BROOKMORE IMPRINT 149A

MALE JVJ 149A 1752577 TWIN FEBRUARY 04 2013

CONNEALY IMPRESSION AMF CAF NHF DDF  
**CONNEALY IMPRINT 8317** AMF CAF NHF 1659104  
 ELLINA OF CONANGA 868 7127

CONNEALY REFLECTION AMF CAF NHF DDF  
 PEARL PAMMY OF CONANGA 194 CAF  
 G A R GRID MAKER AMF CAF NHF DDF  
 ELIGENCE PLUS OF CONANGA

CARCASS	
MARB	4.65
BF	4.33
REA	12.31
%LMY	64.33

W C C SPECIAL DESIGN L309 AMF CAF NHF DDF  
**BROOKMORE MAIDEN 38R** 1293348  
 BROOKMORE MAIDEN 129M

BON VIEW NEW DESIGN 878 AMF CAF NHF DDF  
 N BAR PRIMROSE 2424  
 BROOKMORE TOUCHSTONE 2F  
 BROOKMORE MAIDEN 70G

ACT. BW	ACT. WW	ADJ. 205	ADJ. 365	EPDS				
				BW	WW	YW	MILK	TM
72	633	551	1243	+3.0 P	+54 P	+88 P	+22 P	

## 83 BROOKMORE IMPRINT 147A

MALE JVJ 147A 1752533 FEBRUARY 04 2013

CONNEALY IMPRESSION AMF CAF NHF DDF  
**CONNEALY IMPRINT 8317** AMF CAF NHF 1659104  
 ELLINA OF CONANGA 868 7127

CONNEALY REFLECTION AMF CAF NHF DDF  
 PEARL PAMMY OF CONANGA 194 CAF  
 G A R GRID MAKER AMF CAF NHF DDF  
 ELIGENCE PLUS OF CONANGA

CARCASS	
MARB	4.65
BF	7.14
REA	11.23
%LMY	60.57

SITZ ALLIANCE 6595 DMF AMF CAF NHF DDF  
**BROOKMORE TIBBIE 46M** 1112732  
 BROOKMORE TIBBIE 124K

SITZ TRAVELER 8180 AMF CAF NHF DDF  
 SITZ BARBARAMERE JET 2698  
 BROOKMORE TOUCHSTONE 2F  
 BROOKMORE TIBBIE 93F

ACT. BW	ACT. WW	ADJ. 205	ADJ. 365	EPDS				
				BW	WW	YW	MILK	TM
80	737	668	1252	+2.3 37%	+46 28%	+81 21%	+22 15%	+45

## 86 BROOKMORE IMPRINT 177A

MALE JVJ 177A 1752628 FEBRUARY 08 2013

CONNEALY IMPRESSION AMF CAF NHF DDF  
**CONNEALY IMPRINT 8317** AMF CAF NHF 1659104  
 ELLINA OF CONANGA 868 7127

CONNEALY REFLECTION AMF CAF NHF DDF  
 PEARL PAMMY OF CONANGA 194 CAF  
 G A R GRID MAKER AMF CAF NHF DDF  
 ELIGENCE PLUS OF CONANGA

CARCASS	
MARB	3.90
BF	5.24
REA	13.86
%LMY	64.66

W C C SPECIAL DESIGN L309 AMF CAF NHF DDF  
**ATLATA BLACKCAP 12U** 1473726  
 ATLATA BLACKCAP 114M

BON VIEW NEW DESIGN 878 AMF CAF NHF DDF  
 N BAR PRIMROSE 2424  
 SVF SIEBRINGS FOREVER RUSS AMF CAF NHF DDF  
 MLA BLACKCAP 6'93

ACT. BW	ACT. WW	ADJ. 205	ADJ. 365	EPDS				
				BW	WW	YW	MILK	TM
86	775	685	1376	+2.8 37%	+55 28%	+91 20%	+20 14%	+48

## 84 BROOKMORE IMPRINT 148A

MALE JVJ 148A 1752576 TWIN FEBRUARY 04 2013

CONNEALY IMPRESSION AMF CAF NHF DDF  
**CONNEALY IMPRINT 8317** AMF CAF NHF 1659104  
 ELLINA OF CONANGA 868 7127

CONNEALY REFLECTION AMF CAF NHF DDF  
 PEARL PAMMY OF CONANGA 194 CAF  
 G A R GRID MAKER AMF CAF NHF DDF  
 ELIGENCE PLUS OF CONANGA

CARCASS	
MARB	5.00
BF	3.33
REA	11.34
%LMY	64.56

W C C SPECIAL DESIGN L309 AMF CAF NHF DDF  
**BROOKMORE MAIDEN 38R** 1293348  
 BROOKMORE MAIDEN 129M

BON VIEW NEW DESIGN 878 AMF CAF NHF DDF  
 N BAR PRIMROSE 2424  
 BROOKMORE TOUCHSTONE 2F  
 BROOKMORE MAIDEN 70G

ACT. BW	ACT. WW	ADJ. 205	ADJ. 365	EPDS				
				BW	WW	YW	MILK	TM
76	770	669	1210	+3.0 P	+54 P	+88 P	+22 P	



LOT 84 - BROOKMORE IMPRINT 148A

# CATTLEMAN'S CONNECTION ANGUS BULL SALE 2014



LOT 87 - BROOKMORE WARRIOR 268A



LOT 88 - BROOKMORE WARRIOR 273A

## 87 BROOKMORE WARRIOR 268A

MALE JVJ 268A 1752549 MARCH 25 2013

REMITALL H RACHIS 21R AMF NHF OSF  
REMITALL F WARRIOR 2W 1500423  
REMITALL JANESSA 641S

REMITALL NIGHTHAWK 37N  
HENDERSON MISSIE 32'02  
JUSTAMERE 1118 CASH 665P  
REMITALL JANESSA 107N

CARCASS	
MARB	4.15
BF	5.71
REA	11.81
%LMY	62.51

F A R KRUGERRAND 410H AMF CAF NHF DDF  
BROOKMORE BEAUTY 4P 1212245  
BROOKMORE BEAUTY 43M

KRUGERRAND OF DONAMERE 490 AMF NHF  
F A R ERIANNA 286F  
BENCHMARK MAGIC MAN 007  
CHICO BEAUTY 16G

ACT. BW	ACT. WW	ADJ. 205	ADJ. 365	EPDS								
				BW	WW	YW	MILK	TM				
80	643	684	1287	+2.4	34%	+39	23%	+79	15%	+16	12%	+36

## 89 BROOKMORE WARRIOR 247A

MALE JVJ 247A 1752779 MARCH 14 2013

REMITALL H RACHIS 21R AMF NHF OSF  
REMITALL F WARRIOR 2W 1500423  
REMITALL JANESSA 641S

REMITALL NIGHTHAWK 37N  
HENDERSON MISSIE 32'02  
JUSTAMERE 1118 CASH 665P  
REMITALL JANESSA 107N

CARCASS	
MARB	4.85
BF	5.71
REA	11.41
%LMY	62.18

S A V HERITAGE 6295 AMF CAF NHF DDF  
BROOKMORE LUCY 159X 1558308  
BROOKMORE LUCY 119R

CAR DUKE 104  
S A V BLACKCAP MAY 4136 CAF  
SITZ ALLIANCE 6595 DMF AMF CAF NHF DDF  
BROOKMORE LUCY 61N

ACT. BW	ACT. WW	ADJ. 205	ADJ. 365	EPDS								
				BW	WW	YW	MILK	TM				
84	660	707	1264	+3.8	34%	+45	23%	+88	15%	+23	11%	+46

## 88 BROOKMORE WARRIOR 273A

MALE JVJ 273A 1752768 MARCH 29 2013

REMITALL H RACHIS 21R AMF NHF OSF  
REMITALL F WARRIOR 2W 1500423  
REMITALL JANESSA 641S

REMITALL NIGHTHAWK 37N  
HENDERSON MISSIE 32'02  
JUSTAMERE 1118 CASH 665P  
REMITALL JANESSA 107N

CARCASS	
MARB	5.00
BF	8.59
REA	12.52
%LMY	60.14

S A V NET WORTH 4200 AMF CAF NHF DDF  
BROOKMORE ERICETTE 98X 1558245  
BROOKMORE ERICETTE 10P

S A V 8180 TRAVELER 004 DMF DWF AMF CAF NHF OSF DDF  
S A V MAY 2410  
BUSHS GRAND DESIGN AMF CAF NHF DDF  
BROOKMORE ERICETTE 135M

ACT. BW	ACT. WW	ADJ. 205	ADJ. 365	EPDS								
				BW	WW	YW	MILK	TM				
80	580	666		+3.3	34%	+38	23%	+78	15%	+24	11%	+43

## 90 BROOKMORE RACHIS 228A

MALE JVJ 228A 1752583 MARCH 05 2013

REMITALL H RACHIS 21R AMF NHF OSF  
CCL RACHIS 64X 1559703  
JUSTAMERE 0405 BLACKBIRD 348N

REMITALL NIGHTHAWK 37N  
HENDERSON MISSIE 32'02  
ROTH REGULATOR 0405 CAF  
RR ENVIOUS BLACKBIRD 9982

CARCASS	
MARB	5.50
BF	8.12
REA	12.34
%LMY	60.48

S A F 598 BANDO 5175 AMF CAC DDF  
BROOKMORE TIBBIE 172R CAF 1293199  
MVF TIBBIE 38H

BON VIEW BANDO 598 AMF CAC DDF  
S A F ROYAL LASS 1002  
BROOKMORE LANCER 32F  
MVF TIBBIE 35A

ACT. BW	ACT. WW	ADJ. 205	ADJ. 365	EPDS								
				BW	WW	YW	MILK	TM				
104	784	765	1401	+7.3	34%	+52	23%	+89	15%	+21	13%	+47



## REMITALL H RACHIS 21R

**BW +5.3 WW +63 YW +125 Milk +27 TM +59 SC: +1.19**

BW: 78 lbs. Adj. 205D: 766 lbs. Adj. 365D: 1562 lbs.

Remitall H Rachis 21R was the 2007 Edmonton Farmfair Supreme Champion Bull. His two sons CCL Rachis 64X and Remitall F Warrior 2W are doing an outstanding job at Brookmore Farms.

**4 GRANDSONS & 2 GREAT-GRANDSONS SELL**

# CATTLEMAN'S CONNECTION ANGUS BULL SALE 2014



LOT 91 - BROOKMORE ESCALADE 257A



LOT 92 - BROOKMORE ESCALADE 144A

## 91 BROOKMORE ESCALADE 257A

MALE JVJ 257A 1752747 MARCH 20 2013

MJ ESCALADE 2W AMF NHF  
**J SQUARE S ESCALADE 12Y 1601294**  
 NORTHERN VIEW BLACKCAP 3U

REMITALL H RACHIS 21R AMF NHF OSF  
 REMITALL ANNIE 543T  
 NORTHERN VIEW QUANTUM 86P  
 NORTHERN VIEW BLACKCAP 30N

CARCASS	
MARB	4.90
BF	6.69
REA	12.98
%LMY	62.45

HARB PENDLETON 765 J H AMF CAF NHF DDF  
**BROOKMORE HEROINE 18X 1558377**  
 BROOKMORE HEROINE 110U

S A V FINAL ANSWER 0035 AMF CAF NHF DDF  
 H A R B BLACK LADY 375 J H  
 S A V 004 DENSITY 4336 AMF CAF NHF DDF  
 BROOKMORE HEROINE 284R

ACT. BW	ACT. WW	ADJ. 205	ADJ. 365	EPDS								
				BW	WW	YW	MILK	TM				
82	643	707	1350	+2.7	33%	+41	21%	+84	12%	+26	9%	+47

## 94 BROOKMORE NEUTRON 237A

MALE JVJ 237A 1752666 MARCH 10 2013

S A NEUTRON 377 AMF CAF NHF DDF  
**BROOKMORE NEUTRON 72R 1293332**  
 BROOKMORE TIBBIE 57M

S A F NEUTRON AMF CAF NHF DDF  
 S A QUEEN SUSAN 102  
 A A R REALLY WINDY 1205 AMF CAF NHF DDF  
 BROOKMORE TIBBIE 73K

CARCASS	
MARB	5.20
BF	5.75
REA	12.30
%LMY	62.87

BUSHES STRUT 756 AMF CAF NHF DDF  
**BROOKMORE ALETA 149U 1441430**  
 BROOKMORE ALETA 9P

S A F STRATEGY 9015 AMF CAF NHF DDF  
 BUSHES LADY LA BELLE 457  
 BUSHES GRAND DESIGN AMF CAF NHF DDF  
 BROOKMORE ALETA 49M

ACT. BW	ACT. WW	ADJ. 205	ADJ. 365	EPDS								
				BW	WW	YW	MILK	TM				
70	714	711	1319	+0.8	35%	+48	25%	+91	18%	+17	13%	+41

## 92 BROOKMORE ESCALADE 144A

MALE JVJ 144A 1752778 FEBRUARY 03 2013

MJ ESCALADE 2W AMF NHF  
**J SQUARE S ESCALADE 12Y 1601294**  
 NORTHERN VIEW BLACKCAP 3U

REMITALL H RACHIS 21R AMF NHF OSF  
 REMITALL ANNIE 543T  
 NORTHERN VIEW QUANTUM 86P  
 NORTHERN VIEW BLACKCAP 30N

CARCASS	
MARB	4.45
BF	4.33
REA	10.46
%LMY	62.83

HARB PENDLETON 765 J H AMF CAF NHF DDF  
**BROOKMORE KARAMA 126X 1558395**  
 BROOKMORE KARAMA 204U

S A V FINAL ANSWER 0035 AMF CAF NHF DDF  
 H A R B BLACK LADY 375 J H  
 S A V 004 DENSITY 4336 AMF CAF NHF DDF  
 BROOKMORE KARAMA 89N CAF

ACT. BW	ACT. WW	ADJ. 205	ADJ. 365	EPDS								
				BW	WW	YW	MILK	TM				
78	735	675	1249	+1.0	33%	+40	21%	+79	12%	+23	9%	+43

## 95 BROOKMORE STOCKMAN 206A

MALE JVJ 206A 1752547 FEBRUARY 20 2013

TC STOCKMAN 365  
**MVF STOCKMAN 45H 926195**  
 DODSWOOD ENCHANTRESS MAX-90

TC STOCKMAN  
 TC PRIDE 0014  
 G T MAXIMUM AMF CAF NHF DDF  
 DODSWOOD RITOTRESS 2100-56

CARCASS	
MARB	4.85
BF	4.29
REA	11.66
%LMY	63.84

S A NEUTRON 377 AMF CAF NHF DDF  
**BROOKMORE LADY JANE 178N 1186888**  
 BROOKMORE LADY JANE 52K

S A F NEUTRON AMF CAF NHF DDF  
 S A QUEEN SUSAN 102  
 DAVIS MILLENNIUM 7518  
 BROOKMORE LADY JANE 11G

ACT. BW	ACT. WW	ADJ. 205	ADJ. 365	EPDS								
				BW	WW	YW	MILK	TM				
100	840	777	1383	+6.7	36%	+57	27%	+97	21%	+12	20%	+41

## 93 BROOKMORE NEUTRON 245A

MALE JVJ 245A 1752617 MARCH 14 2013

S A NEUTRON 377 AMF CAF NHF DDF  
**BROOKMORE NEUTRON 72R 1293332**  
 BROOKMORE TIBBIE 57M

S A F NEUTRON AMF CAF NHF DDF  
 S A QUEEN SUSAN 102  
 A A R REALLY WINDY 1205 AMF CAF NHF DDF  
 BROOKMORE TIBBIE 73K

CARCASS	
MARB	4.30
BF	6.67
REA	11.86
%LMY	61.57

BOYD BEEF MAKER 3069 AMC CAF NHF DDF  
**BROOKMORE KARAMA 105T AMF 1375861**  
 BROOKMORE KARAMA 40M

C A FUTURE DIRECTION 5321 AMC CAF NHC DDF  
 BOYD FOREVER LADY 7120  
 PF 7215 AVENGER 0232  
 BROOKMORE KARAMA 119F

ACT. BW	ACT. WW	ADJ. 205	ADJ. 365	EPDS								
				BW	WW	YW	MILK	TM				
82	630	638	1265	+2.7	36%	+33	26%	+76	19%	+20	14%	+37

## 96 BROOKMORE IMAGE MAKER 275A

MALE JVJ 275A 1752574 APRIL 01 2013

H A IMAGE MAKER 0415 AMF CAF NHF DDF  
**F V IMAGE MAKER 64X 1577735**  
 F V 308M ANNIE K 669S

HERO 6267 OF R R 2418  
 H A RITO BLACKCAP 9038  
 F V 20K KING 308M AMF CAF NHF DDF  
 F V 12U ANNIE K 474P

CARCASS	
MARB	5.05
BF	4.76
REA	9.83
%LMY	61.87

BUSHES GRAND DESIGN AMF CAF NHF DDF  
**BROOKMORE ALETA 12R 1411627**  
 BROOKMORE ALETA 60N

BON VIEW NEW DESIGN 1407 AMF CAF NHF DDF  
 BUSHES LADY DIVIDEND 872  
 S A NEUTRON 377 AMF CAF NHF DDF  
 BROOKMORE ALETA 30F

ACT. BW	ACT. WW	ADJ. 205	ADJ. 365	EPDS								
				BW	WW	YW	MILK	TM				
86	700	770		+2.4	34%	+52	23%	+89	14%	+24	13%	+50

# CATTLEMAN'S CONNECTION ANGUS BULL SALE 2014



## AIREY CATTLE CO.

Barb & Ray Airey

BOX 922, RIVERS, MANITOBA R0K 1X0 (204) 566-2134

Barb Cell: (204) 761-1851 Ray Cell: (204) 724-3600

email: rbairey@hotmail.com



Ray, Barb  
Terinda  
& Nikoda

It is an honour to be guest consigning to the 19th Cattleman's Connection Bull Sale. Ray & Barb are relatively new to the Angus business, although, they have been involved in the seedstock business for 30+ years with Rolling D Charolais, and HTA Charolais. Ray and Barb were married five years ago. A new life, a new direction, a new color. Barb became manager of HBH Farms Inc. three years ago and soon after Ray & Barb along with girls Terinda and Nikoda purchased their first Angus females under Airey Cattle Company.

Our breeding objective is to produce top quality seed stock. We will do this through Artificial Insemination and top quality walking sires such as Brookmore Cactus Jack. Cactus Jack was the high selling bull purchased in the Cattleman's Connection bull sale two years ago. Each year we have purchased some top end females, many of them being Brookmore females. This year HBH has had the good fortune to acquire 50 females from Brookmore, making a considerable difference in our seed stock herd.

We cull our bulls hard and only keep the very best. Our sale offering is from leading A.I. sires - Aberdeen, Imprint, Armor, Zorzal and Mentor. Our largest sire group is from Cactus Jack, a bull that will have no problem competing with any A.I. sire. Our bulls were selected for calving ease, performance, eye appeal, and carcass traits. Every bull has been scrotal measured, semen tested and carcass evaluated and is ready to work for you. Each one comes with our personal guarantee.

We look forward to working with Jack and Barb, as well as meeting new people and forming many new friendships. Feel free to call us or stop by the farm. Come and enjoy lunch with us sale day!

Barb & Ray



LOT 97

HBH  
ANCHOR 303A

97

HBH ANCHOR 303A

MALE HBH 303A 1748112 JANUARY 11 2013

C R A BEXTOR 872 5205 608 AMF CAF NHF DDF  
TC ABERDEEN 759 AMF CAF NHF DDF 1485453  
TC BLACKBIRD 4034 CAF

B A R EXT TRAVELER 205 DMF AMF CAF NHF DDF  
CRA LADY JAYE 608 498 S EASY  
BON VIEW NEW DESIGN 208 AMF CAC NHF DDF  
TC BLACKBIRD 1013

CARCASS	
MARB	5.75
BF	10.95
REA	15.09
%LMY	59.82

SITZ UPWARD 307R DMF AMF CAF NHF DDF  
BROOKMORE BELLA 29Y 1603632  
BROOKMORE BELLA 43P

CONNELLY ONWARD DMF AMF CAF NHF DDF  
SITZ HENRIETTA PRIDE 81M  
SITZ ALLIANCE 6595 DMF AMF CAF NHF DDF  
BROOKMORE BELLA 125L

ACT.		ADJ.		EPDS								
BW	WW	205	365	BW	WW	YW	MILK	TM				
75	938	848	1475	+1.0	37%	+64	28%	+110	24%	+36	21%	+68



TC ABERDEEN 759

**BW +0.8 WW +56 YW +102 Milk +37 TM +65 SC: +0.53**  
TC Aberdeen 759 sires low birth weight, attractive structurally correct cattle. A breed leader in maternal traits, docility and udder quality. An Elite Carcass Merit sire, a bull with performance, style and calving ease.

# CATTLEMAN'S CONNECTION ANGUS BULL SALE 2014

## 98

### HBH AVERY 338A

MALE HBH 338A 1771126 FEBRUARY 19 2013

TRES MARIAS 6301 ZORZAL  
WAF ZORZAL 321U AMF CAF NHF OSF 1485949  
TRES MARIAS 6582 CUMELLEN 5632

TRES MARIAS 5887 HORNERO  
TRES MARIAS 4850 WIND EXT  
TRES MARIAS 5837 CUMELLEN  
TRES MARIAS 5632 CHAPAR 5026

CARCASS	
MARB	5.05
BF	8.12
REA	12.91
%LMY	60.94

PRAIRIELANE OBJECTIVE 7093  
PRAIRIELANE 7093 ESTELLE 0060 1551826  
PRAIRIELANE FOCUS ESTELLE 8194

S S OBJECTIVE T510 OT26 DMF AMF CAF NHF DDF  
PRAIRIELANE 7451 ESTELLE 1076  
CUDLOBE IN FOCUS 17S  
PRAIRIELANE 4019 ESTELLE 6015

EPDS									
ACT. BW	ACT. WW	ADJ. 205	ADJ. 365	BW	WW	YW	MILK	TM	
98	770	732	1485	+6.4 P+%	+58 P+%	+103 P+%	+19 P		



LOT 98 - HBH AVERY 338A

## 99

### HBH ACE 9A

MALE HBH 9A 1732139 MARCH 10 2013

TRES MARIAS 6301 ZORZAL  
WAF ZORZAL 321U AMF CAF NHF OSF 1485949  
TRES MARIAS 6582 CUMELLEN 5632

TRES MARIAS 5887 HORNERO  
TRES MARIAS 4850 WIND EXT  
TRES MARIAS 5837 CUMELLEN  
TRES MARIAS 5632 CHAPAR 5026

CARCASS	
MARB	5.25
BF	8.59
REA	12.39
%LMY	60.04

PRAIRIELANE IDEAL 2014-4019  
PRAIRIELANE 4019 ESTELLE 6086 1323790  
PRAIRIELANE 1022 ESTELLE 4081

PRAIRIELANE IDEAL 7451-2014  
PRAIRIELANE 7081 CREST 0005  
PRAIRIELANE IDEAL 7451-1022  
PRAIRIELANE 6008 ESTELLE 9009

EPDS									
ACT. BW	ACT. WW	ADJ. 205	ADJ. 365	BW	WW	YW	MILK	TM	
105	787	822	1490	+6.3 36%	+49 26%	+77 15%	+13 8%	+38	



LOT 89 - HBH ACE 9A

## CATTLEMAN'S CONNECTION BULL SALE

Bulls for the working man

*Please join us for lunch  
prior to the sale*

### WAF ZORZAL 321U

**BW +3.7 WW +34 YW +43 Milk +8 TM +25 SC +0.04**

BW: 98 lbs. Adj. 205D: 771 lbs. Adj. 365D: 1309 lbs.

Outcross genetics from Argentina, bred by Tres Marias, the top Angus herd in South America, 17 times breeder of the year award winner. WAF Zorzal 321U was the high selling bull in the Remington Dispersal Sale at \$75,000 to French River Cattle Co. He sires thick-topped correct cattle with great dispositions, fertility and great hair.

**2 SONS SELL**



# CATTLEMAN'S CONNECTION ANGUS BULL SALE 2014



LOT 100

HBH  
AGENT 310A

## 100

## HBH AGENT 310A

MALE HBH 310A 1732068 FEBRUARY 04 2013

SITZ UPWARD 307R DMF AMF CAF NHF DDF  
BROOKMORE CACTUS JACK 87Y 1603570  
BROOKMORE ELINE 91M

CONNEALY ONWARD DMF AMF CAF NHF DDF  
SITZ HENRIETTA PRIDE 81M  
BENCHMARK STRETCH 062  
BROOKMORE ELINE 42K

CARCASS	
MARB	5.00
BF	9.07
REA	13.94
%LMY	60.81

HBH GRAND DESIGN 4S  
HBH HI LITE DESIGN 63W 1542989  
HBH HI LITE 27S

BUSHS GRAND DESIGN AMF CAF NHF DDF  
KEMBAR LUCY 93P  
MVF NEW FRONTIER 016N  
KEMBAR HI LITE 44N

ACT. BW	ACT. WW	ADJ. 205	ADJ. 365	EPDS								
				BW	WW	YW	MILK	TM				
87	881	814	1399	+2.4	32%	+53	20%	+88	9%	+17	10%	+44



LOT 101 - HBH ADAR 315A

## 101

## HBH ADAR 315A

MALE HBH 315A 1732074 FEBRUARY 08 2013

SITZ UPWARD 307R DMF AMF CAF NHF DDF  
BROOKMORE CACTUS JACK 87Y 1603570  
BROOKMORE ELINE 91M

CONNEALY ONWARD DMF AMF CAF NHF DDF  
SITZ HENRIETTA PRIDE 81M  
BENCHMARK STRETCH 062  
BROOKMORE ELINE 42K

CARCASS	
MARB	4.60
BF	8.57
REA	10.95
%LMY	58.88

TC FOREMAN 016  
HBH BLACKCAP 12S 1354725  
KEMBAR BLACKCAP 83P

CONNEALY FOREFRONT AMF CAF NHF DDF  
TC PRIDE 8067  
MVF 234D TRAVELER 145M  
KEMBAR BLACKCAP 56M

ACT. BW	ACT. WW	ADJ. 205	ADJ. 365	EPDS								
				BW	WW	YW	MILK	TM				
85	782	720	1246	+2.6	34%	+46	23%	+81	12%	+21	12%	+44

## BROOKMORE CACTUS JACK 87Y

**BW +1.8 WW +57 YW +104 Milk +27 TM +56**  
BW: 94 lbs. Adj. 205D: 785 lbs. Adj. 365D: 1522 lbs.

Cactus Jack 87Y was the lead off bull at the 2012 Cattleman's Connection Bull Sale. a son of the excellent breeding bull, Sitz Upward 307R. He had a 205 day weight of 785 and a 365 day weight of 1522. Cactus Jack had a marbling score of 6.80 and a REA of 15.61 and a %LMY of nearly 62.

**13 SONS SELL**





# CATTLEMAN'S CONNECTION ANGUS BULL SALE 2014



LOT 102 - HBH AMARO 307A



LOT 104 - HBH ARTHUR 311A

## 102

### HBH AMARO 307A

MALE HBH 307A 1732064 FEBRUARY 02 2013

SITZ UPWARD 307R DMF AMF CAF NHF DDF  
BROOKMORE CACTUS JACK 87Y 1603570  
BROOKMORE ELINE 91M

CONNELY ONWARD DMF AMF CAF NHF DDF  
SITZ HENRIETTA PRIDE 81M  
BENCHMARK STRETCH 062  
BROOKMORE ELINE 42K

CARCASS	
MARB	4.80
BF	5.27
REA	12.48
%LMY	63.50

MVF EXTRA 85R  
HBH LUCY KAY 78U 1682268  
HBH LUCY KAY 17R

NICHOLS EXTRA H6 AMF CAF NHF DDF  
HAPPYVALE JRP NEONIA 85E  
F A R KRUGERRAND 410H AMF CAF NHF DDF  
KEMBAR LUCY 90N

ACT. BW	ACT. WW	ADJ. 205	ADJ. 365	EPDS								
				BW	WW	YW	MILK	TM				
65	759	681	1319	-0.8	31%	+41	20%	+82	10%	+20	9%	+41

## 103

### HBH AARON 309A

MALE HBH 309A 1732070 FEBRUARY 04 2013

SITZ UPWARD 307R DMF AMF CAF NHF DDF  
BROOKMORE CACTUS JACK 87Y 1603570  
BROOKMORE ELINE 91M

CONNELY ONWARD DMF AMF CAF NHF DDF  
SITZ HENRIETTA PRIDE 81M  
BENCHMARK STRETCH 062  
BROOKMORE ELINE 42K

CARCASS	
MARB	4.60
BF	5.71
REA	10.85
%LMY	61.73

KEMBAR TWISTER 31J  
KEMBAR PRIDE 52P 1219449  
KEMBAR PRIDE 76G

S A F FAME AMF CAF NHF DDF  
BROOKMORE MAY 88F  
MVF DIRECTOR 55A  
KEMBAR PRIDE 6Y

ACT. BW	ACT. WW	ADJ. 205	ADJ. 365	EPDS								
				BW	WW	YW	MILK	TM				
70	663	564	1237	-0.6	34%	+37	22%	+67	12%	+16	12%	+35

## 104

### HBH ARTHUR 311A

MALE HBH 311A 1732067 FEBRUARY 04 2013

SITZ UPWARD 307R DMF AMF CAF NHF DDF  
BROOKMORE CACTUS JACK 87Y 1603570  
BROOKMORE ELINE 91M

CONNELY ONWARD DMF AMF CAF NHF DDF  
SITZ HENRIETTA PRIDE 81M  
BENCHMARK STRETCH 062  
BROOKMORE ELINE 42K

CARCASS	
MARB	4.80
BF	8.12
REA	13.34
%LMY	61.29

S CHISUM 6175 AMF CAF NHF  
HBH MISS THUNDER 67Y 1646548  
HBH MISS THUNDER 47W

S ALLIANCE 3313 AMF  
S GLORIA 464  
CONNELY THUNDER AMF CAF NHF DDF  
HBH MISS EVA 10S

ACT. BW	ACT. WW	ADJ. 205	ADJ. 365	EPDS								
				BW	WW	YW	MILK	TM				
80	838	833	1503	+2.1	34%	+60	23%	+106	12%	+29	11%	+59

## 105

### HBH ACARIO 314A

MALE HBH 314A 1732075 FEBRUARY 08 2013

SITZ UPWARD 307R DMF AMF CAF NHF DDF  
BROOKMORE CACTUS JACK 87Y 1603570  
BROOKMORE ELINE 91M

CONNELY ONWARD DMF AMF CAF NHF DDF  
SITZ HENRIETTA PRIDE 81M  
BENCHMARK STRETCH 062  
BROOKMORE ELINE 42K

CARCASS	
MARB	4.80
BF	10.00
REA	14.15
%LMY	60.03

MVF NEW FRONTIER 016N  
HBH ELINE 19R 1315468  
KEMBAR ELINE 78N

B/R NEW FRONTIER 095 AMF CAF NHF DDF  
GREENBUSH TIBBIE 5H  
KEMBAR TWISTER 31J  
BROOKMORE ELINE 68J

ACT. BW	ACT. WW	ADJ. 205	ADJ. 365	EPDS								
				BW	WW	YW	MILK	TM				
90	761	701	1290	+2.5	34%	+43	22%	+75	10%	+19	12%	+41

## 106

### HBH AZIZ 324A

MALE HBH 324A 1732081 FEBRUARY 12 2013

SITZ UPWARD 307R DMF AMF CAF NHF DDF  
BROOKMORE CACTUS JACK 87Y 1603570  
BROOKMORE ELINE 91M

CONNELY ONWARD DMF AMF CAF NHF DDF  
SITZ HENRIETTA PRIDE 81M  
BENCHMARK STRETCH 062  
BROOKMORE ELINE 42K

CARCASS	
MARB	4.99
BF	8.57
REA	12.63
%LMY	60.25

MVF NEW FRONTIER 016N  
HBH HEIRESS 61T 1480465  
KEMBAR HEIRESS 116N

B/R NEW FRONTIER 095 AMF CAF NHF DDF  
GREENBUSH TIBBIE 5H  
BROOKMORE STOCKMAN 89K  
KEMBAR HEIRESS 4C

ACT. BW	ACT. WW	ADJ. 205	ADJ. 365	EPDS								
				BW	WW	YW	MILK	TM				
87	773	723	1330	+2.8	32%	+44	21%	+79	9%	+20	11%	+42



LOT 106 - HBH AZIZ 324A

# CATTLEMAN'S CONNECTION ANGUS BULL SALE 2014



LOT 107 - HBH AMIGO 348A

## 107

### HBH AMIGO 348A

MALE HBH 348A 1732096 FEBRUARY 21 2013

SITZ UPWARD 307R DMF AMF CAF NHF DDF  
**BROOKMORE CACTUS JACK 87Y 1603570**  
 BROOKMORE ELINE 91M

MVF EXTRA 85R  
**HBH BLACKBIRD 62T 1483436**  
 KEMBAR BLACKBIRD 92N

CONNELLY ONWARD DMF AMF CAF NHF DDF  
 SITZ HENRIETTA PRIDE 81M  
 BENCHMARK STRETCH 062  
 BROOKMORE ELINE 42K

NICHOLS EXTRA H6 AMF CAF NHF DDF  
 HAPPYVALE JRP NEONIA 85E  
 BROOKMORE STOCKMAN 89K  
 KEMBAR BLACKBIRD 117H

CARCASS	
MARB	5.10
BF	10.00
REA	11.69
%LMY	58.03

ACT. BW	ACT. WW	ADJ. 205	ADJ. 365	EPDS								
				BW	WW	YW	MILK	TM				
100	706	686	1279	+5.3	32%	+38	21%	+76	10%	+19	11%	+38



LOT 108 - HBH ASSURE 363A

## 108

### HBH ASSURE 363A

MALE HBH 363A 1755363 FEBRUARY 24 2013

SITZ UPWARD 307R DMF AMF CAF NHF DDF  
**BROOKMORE CACTUS JACK 87Y 1603570**  
 BROOKMORE ELINE 91M

SCC LUCRATIVE 25L  
**KEMBAR LUCY 74N 1153933**  
 KEMBAR LUCY 45K

CONNELLY ONWARD DMF AMF CAF NHF DDF  
 SITZ HENRIETTA PRIDE 81M  
 BENCHMARK STRETCH 062  
 BROOKMORE ELINE 42K

GV DUKE 18C  
 MVF TIBBIE 52F  
 MVF EMULATION EXT 20G  
 KEMBAR LUCY 81G

CARCASS	
MARB	5.60
BF	7.62
REA	13.57
%LMY	61.99

ACT. BW	ACT. WW	ADJ. 205	ADJ. 365	EPDS								
				BW	WW	YW	MILK	TM				
100	732	720	1389	+5.5	34%	+42	23%	+76	12%	+18	12%	+39



LOT 109 - HBH ALADIN 366A

## 109

### HBH ALADIN 366A

MALE HBH 366A 1732111 FEBRUARY 24 2013

SITZ UPWARD 307R DMF AMF CAF NHF DDF  
**BROOKMORE CACTUS JACK 87Y 1603570**  
 BROOKMORE ELINE 91M

K C F BENNETT TOTAL AMF CAF NHF DDF  
**HBH BANDOLIER LASS 3R 1315475**  
 KEMBAR BANDOLIER LASS 37N

CONNELLY ONWARD DMF AMF CAF NHF DDF  
 SITZ HENRIETTA PRIDE 81M  
 BENCHMARK STRETCH 062  
 BROOKMORE ELINE 42K

SITZ ALLIANCE 6595 DMF AMF CAF NHF DDF  
 EXT OF CONANGA 6790  
 CONNELLY VENTURE 4423  
 KEMBAR BANDOLIER LASS 14L

CARCASS	
MARB	5.65
BF	10.00
REA	13.28
%LMY	59.32

ACT. BW	ACT. WW	ADJ. 205	ADJ. 365	EPDS								
				BW	WW	YW	MILK	TM				
83	701	689	1328	+1.1	34%	+43	23%	+82	12%	+22	12%	+44

## 110

### HBH AZARIAH 375A

MALE HBH 375A 1732119 FEBRUARY 26 2013

SITZ UPWARD 307R DMF AMF CAF NHF DDF  
**BROOKMORE CACTUS JACK 87Y 1603570**  
 BROOKMORE ELINE 91M

KEMBAR FREEDOM 39P  
**HBH BANDOLIER LASS 18S 1354728**  
 KEMBAR BANDOLIER LASS 35P

CONNELLY ONWARD DMF AMF CAF NHF DDF  
 SITZ HENRIETTA PRIDE 81M  
 BENCHMARK STRETCH 062  
 BROOKMORE ELINE 42K

BUSHES GRAND DESIGN AMF CAF NHF DDF  
 KEMBAR HEIRESS 35M  
 KEMBAR TWISTER 31J  
 KEMBAR BANDOLIER 155H

CARCASS	
MARB	5.20
BF	9.07
REA	12.96
%LMY	60.01

ACT. BW	ACT. WW	ADJ. 205	ADJ. 365	EPDS								
				BW	WW	YW	MILK	TM				
92	690	639	1297	+2.2	33%	+44	22%	+74	10%	+18	11%	+40

# CATTLEMAN'S CONNECTION ANGUS BULL SALE 2014



LOT 111 - HBH ABBAS 379A



LOT 113 - HBH ALVIS 339A

## 111

### HBH ABBAS 379A

MALE HBH 379A 1732121 FEBRUARY 27 2013

SITZ UPWARD 307R DMF AMF CAF NHF DDF  
**BROOKMORE CACTUS JACK 87Y 1603570**  
 BROOKMORE ELINE 91M

CONNELY ONWARD DMF AMF CAF NHF DDF  
 SITZ HENRIETTA PRIDE 81M  
 BENCHMARK STRETCH 062  
 BROOKMORE ELINE 42K

CARCASS	
MARB	4.65
BF	9.05
REA	13.74
%LMY	60.67

MVF NEW DESIGN 315P  
**HBH EILEEN 10U 1492216**  
 KEMBAR EILEEN 50N

MVF NEW DESIGN 67M  
 MVRB TIBBIE 123J  
 KEMBAR TWISTER 31J  
 KEMBAR EILEEN 98G

ACT. BW	ACT. WW	ADJ. 205	ADJ. 365	EPDS				
				BW	WW	YW	MILK	TM
90	747	744	1350	+2.5 32%	+44 21%	+76 10%	+19 11%	+41

## 113

### HBH ALVIS 339A

MALE HBH 339A 1732092 FEBRUARY 20 2013

CONNELY IMPRESSION AMF AMF CAF NHF DDF  
**CONNELY IMPRINT 8317 AMF CAF NHF 1659104**  
 ELLINA OF CONANGA 868 7127

CONNELY REFLECTION AMF AMF CAF NHF DDF  
 PEARL PAMMY OF CONANGA 194 CAF  
 G A R GRID MAKER AMF AMF CAF NHF DDF  
 ELIGENCE PLUS OF CONANGA

CARCASS	
MARB	4.70
BF	10.00
REA	12.56
%LMY	58.73

MVF NEW DESIGN 315P  
**HBH LUCY 16U 1492220**  
 KEMBAR LUCY 74N

MVF NEW DESIGN 67M  
 MVRB TIBBIE 123J  
 SCC LUCRATIVE 25L  
 KEMBAR LUCY 45K

ACT. BW	ACT. WW	ADJ. 205	ADJ. 365	EPDS				
				BW	WW	YW	MILK	TM
105	693	671	1312	+6.4 34%	+42 25%	+69 17%	+16 12%	+37

## 112

### HBH AMOS 383A

MALE HBH 383A 1732125 FEBRUARY 28 2013

SITZ UPWARD 307R DMF AMF CAF NHF DDF  
**BROOKMORE CACTUS JACK 87Y 1603570**  
 BROOKMORE ELINE 91M

CONNELY ONWARD DMF AMF CAF NHF DDF  
 SITZ HENRIETTA PRIDE 81M  
 BENCHMARK STRETCH 062  
 BROOKMORE ELINE 42K

CARCASS	
MARB	4.70
BF	7.14
REA	11.61
%LMY	60.88

S A V 004 DENSITY 4336 AMF AMF CAF NHF DDF  
**HBH LUCY 39W 1542982**  
 KEMBAR LUCY 93P

S A V 8180 TRAVELER 004 DMF DMF AMF CAF NHF OSF DDF  
 S A V MAY 7238 CAF DDF  
 SCC LUCRATIVE 25L  
 KEMBAR LUCY 84L

ACT. BW	ACT. WW	ADJ. 205	ADJ. 365	EPDS				
				BW	WW	YW	MILK	TM
90	723	691	1339	+3.6 32%	+51 21%	+93 12%	+22 11%	+48

## 114

### HBH ALONSO 343A

MALE HBH 343A 1732094 FEBRUARY 21 2013

CONNELY IMPRESSION AMF AMF CAF NHF DDF  
**CONNELY IMPRINT 8317 AMF CAF NHF 1659104**  
 ELLINA OF CONANGA 868 7127

CONNELY REFLECTION AMF AMF CAF NHF DDF  
 PEARL PAMMY OF CONANGA 194 CAF  
 G A R GRID MAKER AMF AMF CAF NHF DDF  
 ELIGENCE PLUS OF CONANGA

CARCASS	
MARB	4.70
BF	7.62
REA	12.34
%LMY	60.99

MVF EXTRA 85R  
**HBH BANDOLIER LASS 66U 1523401**  
 HBH BANDOLIER LASS 33S

NICHOLS EXTRA H6 AMF AMF CAF NHF DDF  
 HAPPYVALE JRP NEONIA 85E  
 MVF NEW FRONTIER 016N  
 KEMBAR BANDOLIER LASS 23N

ACT. BW	ACT. WW	ADJ. 205	ADJ. 365	EPDS				
				BW	WW	YW	MILK	TM
89	746	724	1332	+3.3 34%	+45 25%	+77 16%	+19 12%	+42



LOT 112 - HBH AMOS 383A



LOT 114 - HBH ALONSO 343A

# CATTLEMAN'S CONNECTION ANGUS BULL SALE 2014



**LOT 115**  
**HBH**  
**ACKLEY 319A**

**115**

**HBH ACKLEY 319A**

MALE HBH 319A 1755362 FEBRUARY 10 2013

CONNEALY IMPRESSION AMF CAF NHF DDF  
**CONNEALY IMPRINT 8317** AMF CAF NHF **1659104**  
ELLINA OF CONANGA 868 7127

CONNEALY REFLECTION AMF CAF NHF DDF  
PEARL PAMMY OF CONANGA 194 CAF  
G A R GRID MAKER AMF CAF NHF DDF  
ELIGENCE PLUS OF CONANGA

CARCASS	
MARB	5.00
BF	9.60
REA	13.36
%LMY	59.80

MVF NEW FRONTIER 016N  
**HBH LUCY 24R** 1315471  
KEMBAR LUCY 50K

B/R NEW FRONTIER 095 AMF CAF NHF DDF  
GREENBUSH TIBBIE 5H  
MVF EMULATION EXT 20G  
KEMBAR LUCY 72G

ACT. BW	ACT. WW	ADJ. 205	ADJ. 365	EPDS								
				BW	WW	YW	MILK	TM				
99	772	718	1412	+4.4	36%	+46	26%	+75	18%	+14	13%	+37



**LOT 116 - HBH ARNIE 354A**

**116**

**HBH ARNIE 354A**

MALE HBH 354A 1732105 FEBRUARY 23 2013

CONNEALY IMPRESSION AMF CAF NHF DDF  
**CONNEALY IMPRINT 8317** AMF CAF NHF **1659104**  
ELLINA OF CONANGA 868 7127

CONNEALY REFLECTION AMF CAF NHF DDF  
PEARL PAMMY OF CONANGA 194 CAF  
G A R GRID MAKER AMF CAF NHF DDF  
ELIGENCE PLUS OF CONANGA

CARCASS	
MARB	5.30
BF	10.48
REA	12.04
%LMY	57.82

MVF EXTRA 85R  
**HBH LUCY 20T** 1602890  
HBH LUCY 13R

NICHOLS EXTRA H6 AMF CAF NHF DDF  
HAPPYVALE JRP NEONIA 85E  
TC FOREMAN 016  
KEMBAR LUCY 77N

ACT. BW	ACT. WW	ADJ. 205	ADJ. 365	EPDS								
				BW	WW	YW	MILK	TM				
79	776	759	1348	+1.2	34%	+49	25%	+85	18%	+19	12%	+44

## CONNEALY IMPRINT 8317

**BW +2.6 WW +63 YW +100 Milk +22 TM +54 SC: +1.00**

BW: 82 lbs. Adj. 205D: 684 lbs. Adj. 365D: 1305 lbs.

Connealy Imprint 8317 is a bull whose physical design includes extra muscle, body length and functional feet and legs. In the top 10% for weaning weight, top 15% for yearling weight and top 20% for marbling.

**6 SONS SELL**



# CATTLEMAN'S CONNECTION ANGUS BULL SALE 2014

## 117

### HBH ADEN 361A

MALE HBH 361A 1732109 FEBRUARY 24 2013

CONNEALY IMPRESSION AMF CAF NHF DDF  
**CONNEALY IMPRINT 8317** AMF CAF NHF **1659104**  
 ELLINA OF CONANGA 868 7127

CONNEALY REFLECTION AMF CAF NHF DDF  
 PEARL PAMMY OF CONANGA 194 CAF  
 G A R GRID MAKER AMF CAF NHF DDF  
 ELIGENCE PLUS OF CONANGA

CARCASS	
MARB	4.55
BF	7.62
REA	11.90
%LMY	60.63

MVF NEW FRONTIER 016N  
**HBH ELINE 02T** 1439958  
 KEMBAR ELINE 78N

B/R NEW FRONTIER 095 AMF CAF NHF DDF  
 GREENBUSH TIBBIE 5H  
 KEMBAR TWISTER 31J  
 BROOKMORE ELINE 68J

ACT. BW	ACT. WW	ADJ. 205	ADJ. 365	EPDS								
				BW	WW	YW	MILK	TM				
96	799	786	1283	+3.5	34%	+51	25%	+79	18%	+17	12%	+43

## 118

### HBH ABE 330A

MALE HBH 330A 1732086 FEBRUARY 16 2013

CONNEALY IMPRESSION AMF CAF NHF DDF  
**CONNEALY IMPRINT 8317** AMF CAF NHF **1659104**  
 ELLINA OF CONANGA 868 7127

CONNEALY REFLECTION AMF CAF NHF DDF  
 PEARL PAMMY OF CONANGA 194 CAF  
 G A R GRID MAKER AMF CAF NHF DDF  
 ELIGENCE PLUS OF CONANGA

CARCASS	
MARB	5.60
BF	9.05
REA	13.03
%LMY	60.09

SITZ ALLIANCE 6595 DMF AMF CAF NHF DDF  
**HBH ALL LUCY 15S** 1354726  
 KEMBAR LUCY 68P

SITZ TRAVELER 8180 AMF CAF NHF DDF  
 SITZ BARBARAMERE JET 2698  
 KEMBAR TWISTER 31J  
 KEMBAR LUCY 95G

ACT. BW	ACT. WW	ADJ. 205	ADJ. 365	EPDS								
				BW	WW	YW	MILK	TM				
91	758	721	1194	+2.9	36%	+47	28%	+74	20%	+20	14%	+44

*HBH Angus Bulls  
 Recommended for Heifers*

OUT OF FIRST CALF HEIFERS:  
 Lot # 97, 104, 120, 121, 122

OUT OF COWS:  
 Lot # 102, 103, 109, 116, 119, 123

**OFFSPRING SIRED BY BULLS  
 PURCHASED AT CATTLEMAN'S  
 CONNECTION QUALIFY FOR THE  
 CANADIAN ANGUS CERTIFICATION  
 PROGRAM & RANCHER ENDORSED  
 BRANDED BEEF PROGRAMS**

For tags & more info contact:  
 Canadian Angus Association  
 1-866-571-8093

[www.cdnangus.ca](http://www.cdnangus.ca)



[www.rancherendorsed.com](http://www.rancherendorsed.com)

## NO BULL

"Fertility and normal sex drive in the bull go hand in hand with strong muscular features. This means good muscular definition, freedom from excessive fat and the profile of a bull that has a well-developed front quarter and a masculine head and neck."

*- Jan C. Bonsma, Animal Scientist*

"Cattle breeding is a relatively simple endeavor. The only difficult part is to keep it simple".

*- Tom Lasater, Beefmaster Founder & Breeder*

"He [the successful breeder] brings inferior stock up to a higher level by consistent use of prepotent sires of the same improved type."

*- James Wright, Wright's Bulletin*

"The female's role in life is to maintain environmental adaptability. The male's role is to maintain overall vigor. Sexual distinction, a masculine vigorous male and feminine adaptable female, is vital to reproductivity."

*- Larry Leonhardt, Shoshone Angus*

"Selecting a herd sire is the hardest thing to do. Always try to get one that has an excellent mother and look-alike grandmothers."

*- James Lingle, Wye Plantation*

# CATTLEMAN'S CONNECTION ANGUS BULL SALE 2014



LOT 119

HBH  
ARIUS 362A

## 119

## HBH ARIUS 362A

MALE HBH 362A 1732110 FEBRUARY 24 2013

MYTTY IN FOCUS AMF CAF NHF DDF  
WILDE'S ARMOR 6210 AMF CAF NHF DDF 1534586  
WILDE'S 8005 ELGA 6210 CAF

S A F FOCUS OF E R AMF CAF NHF DDF  
MYTTY COUNTESS 906  
BOYD NEW DAY 8005 AMF CAF NHF DDF  
WILDE'S 022 ELGA 4100

CARCASS	
MARB	5.75
BF	10.00
REA	11.83
%LMY	58.14

MVF NEW FRONTIER 016N  
HBH MISS EVA 10S 1354724  
KEMBAR MISS EVA 28N

B/R NEW FRONTIER 095 AMF CAF NHF DDF  
GREENBUSH TIBBIE 5H  
KEMBAR TWISTER 31J  
BROOKMORE MISS EVA 78J

ACT. BW	ACT. WW	ADJ. 205	ADJ. 365	EPDS								
				BW	WW	YW	MILK	TM				
82	688	676	1322	+0.6	34%	+41	25%	+75	18%	+16	14%	+37



LOT 120 - HBH ARMERY 359A

## 120

## HBH ARMERY 359A

MALE HBH 359A 1732101 FEBRUARY 23 2013

MYTTY IN FOCUS AMF CAF NHF DDF  
WILDE'S ARMOR 6210 AMF CAF NHF DDF 1534586  
WILDE'S 8005 ELGA 6210 CAF

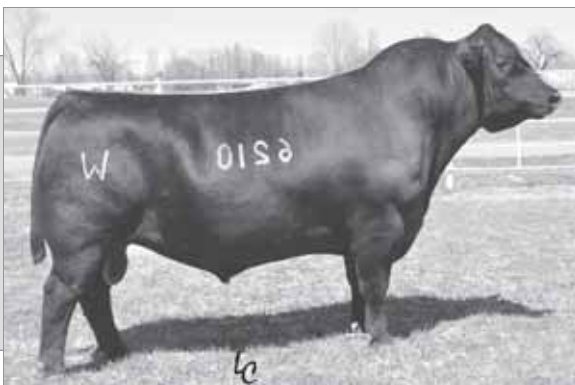
S A F FOCUS OF E R AMF CAF NHF DDF  
MYTTY COUNTESS 906  
BOYD NEW DAY 8005 AMF CAF NHF DDF  
WILDE'S 022 ELGA 4100

CARCASS	
MARB	5.70
BF	8.12
REA	11.39
%LMY	59.70

S A V BISMARCK 5682 AMF CAF NHF DDF  
HBH GRAND LASS 62Y 1652215  
HBH GRAND LASS 17W

G A R GRID MAKER AMF CAF NHF DDF  
S A V ABIGALE 0451  
HBH GRAND DESIGN 4S  
HBH BANDOLIER LASS 25S

ACT. BW	ACT. WW	ADJ. 205	ADJ. 365	EPDS								
				BW	WW	YW	MILK	TM				
84	766	824	1431	+1.8	36%	+58	26%	+95	19%	+20	13%	+49



## WILDE'S ARMOR 6210

**BW -0.3 WW +59 YW +100 Milk +19 TM +49 SC: +0.62**

BW: 80 lbs. Adj. 205D: 776 lbs. Adj. 365D: 1405 lbs.

A calving ease sire with loads of style and pattern, a son of the great calving ease sire, Mytty In Focus. Wilde's Armor 6210 ranks in the top 20% for birth weight, top 10% for weaning weight and top 15% for yearling weight and is very fertile.

**3 SONS SELL**

# CATTLEMAN'S CONNECTION ANGUS BULL SALE 2014

LOT 122  
HBH  
ALMO 313A



121

HBH AMARI 304A

MALE HBH 304A 1732063 FEBRUARY 02 2013

MYTTY IN FOCUS AMF CAF NHF DDF  
WILDE'S ARMOR 6210 AMF CAF NHF DDF 1534586  
WILDE'S 8005 ELGA 6210 CAF

S A F FOCUS OF E R AMF CAF NHF DDF  
MYTTY COUNTESS 906  
BOYD NEW DAY 8005 AMF CAF NHF DDF  
WILDE'S 022 ELGA 4100

S A V 004 DENSITY 4336 AMF CAF NHF DDF  
KEMBAR ROSEBUD 69P  
MVV NEW DESIGN 315P  
KEMBAR LUCY 59P

CARCASS	
MARB	5.35
BF	8.59
REA	15.13
%LMY	62.26

HBH DENSITY 65W  
HBH LUCY 61Y 1652223  
HBH LUCY 47T

ACT. BW	ACT. WW	ADJ. 205	ADJ. 365	EPDS								
				BW	WW	YW	MILK	TM				
80	785	780	1433	+1.7	35%	+53	25%	+89	17%	+19	12%	+46

122

HBH ALMO 313A

MALE HBH 313A 1732072 FEBRUARY 07 2013

G A R RETAIL PRODUCT AMF CAF NHF DDF  
CONNEALY MENTOR 7374 AMF CAF NHF DDF 1657134  
EXECUTA OF CONANGA 939

G A R PRECISION 1680 AMC NHC  
G A R EXT 4927  
JAUER 353 TRAVELER 589 27  
EXEC OF CONANGA 6940

S A V PIONEER 7301 AMF CAF NHF DDF  
HBH LUCY 15Y 1652256  
HBH LUCY 42S

S A V FINAL ANSWER 0035 AMF CAF NHF DDF  
S A V BLACKBIRD 5297 CAC  
KEMBAR FREEDOM 39P  
KEMBAR LUCY 21P

CARCASS	
MARB	5.80
BF	10.48
REA	13.28
%LMY	58.83

ACT. BW	ACT. WW	ADJ. 205	ADJ. 365	EPDS								
				BW	WW	YW	MILK	TM				
60	766	774	1448	-1.9	36%	+49	28%	+89	21%	+31	18%	+56

**EXCELLENT SPREAD  
FROM BIRTH TO YEARLING**  
Low BW + High YW =  
easy calving offspring that  
grow & put on pounds

## CONNEALY MENTOR 7374

**BW +1.5 WW +57 YW +105 Milk +36 TM +65 SC +1.91**

BW: 85 lbs. Adj. 205D: 849 lbs. Adj. 365D: 1500 lbs.

Mentor's dam has been described as one of the most powerful cows to ever leave Connealy Angus. As a yearling Mentor ratioed 116 for WW, 118 for YW, 124 for IMF and 122 for ribeye against 400 herdmates. He sires the "Rancher Kind" that are right-sized with good feet, more than average muscle, ease of fleshing and udders that last. A true beef bull.



# CATTLEMAN'S CONNECTION ANGUS BULL SALE 2014



LOT 123 - HBH ADIDAS 305A



LOT 124 - HBH ADLER 25A

## 123

### HBH ADIDAS 305A

MALE HBH 305A 1732065 FEBRUARY 02 2013

QUAKER HILL OBJECTIVE 3J15 AMF CAF NHF DDF	S S OBJECTIVE T510 OT26 DMF AMF CAF NHF DDF	<table border="1"> <tr><th colspan="2">CARCASS</th></tr> <tr><td>MARB</td><td>4.60</td></tr> <tr><td>BF</td><td>9.54</td></tr> <tr><td>REA</td><td>11.78</td></tr> <tr><td>%LMY</td><td>58.57</td></tr> </table>	CARCASS		MARB	4.60	BF	9.54	REA	11.78	%LMY	58.57
CARCASS												
MARB	4.60											
BF	9.54											
REA	11.78											
%LMY	58.57											
HBH OBJECTIVE 46U 1543794	QUAKER HILL QUEEN 1L4 AMF NHF											
KEMBAR LUCY 21P	KEMBAR TWISTER 31J											
	KEMBAR LUCY 81G											
HBH GRAND DESIGN 4S	BUSHES GRAND DESIGN AMF CAF NHF DDF											
HBH GRAND LUCY 58U 1523397	KEMBAR LUCY 93P											
HBH LUCY 24R	MVF NEW FRONTIER 016N											
	KEMBAR LUCY 50K											

ACT. BW	ACT. WW	ADJ. 205	ADJ. 365	EPDS								
				BW	WW	YW	MILK	TM				
78	781	702	1332	+1.0	32%	+42	21%	+69	10%	+17	10%	+38

## 124

### HBH ADLER 25A

MALE HBH 25A 1732152 MARCH 20 2013

S A V HERITAGE 6295 AMF CAF NHF DDF	CAR DUKE 104	<table border="1"> <tr><th colspan="2">CARCASS</th></tr> <tr><td>MARB</td><td>4.85</td></tr> <tr><td>BF</td><td>9.07</td></tr> <tr><td>REA</td><td>13.66</td></tr> <tr><td>%LMY</td><td>60.58</td></tr> </table>	CARCASS		MARB	4.85	BF	9.07	REA	13.66	%LMY	60.58
CARCASS												
MARB	4.85											
BF	9.07											
REA	13.66											
%LMY	60.58											
HBH HERITAGE 16X 1640335	S A V BLACKCAP MAY 4136 CAF											
KEMBAR ELINE 15N	CONNELLY VENTURE 4423											
	KEMBAR ELINE 13L											
KEMBAR FREEDOM 39P	BUSHES GRAND DESIGN AMF CAF NHF DDF											
HBH ROSEBUD 51S 1354693	KEMBAR HEIRESS 35M											
KEMBAR ROSEBUD 69P	WINDY WILLOWS BRUNO 44L											
	KEMBAR ROSEBUD 1L											

ACT. BW	ACT. WW	ADJ. 205	ADJ. 365	EPDS								
				BW	WW	YW	MILK	TM				
93	720	729	1477	+5.5	31%	+51	20%	+87	10%	+21	11%	+47

## GENERAL INFORMATION

**CATTLE INSPECTION:** All carry permanent identity tags, corresponding to Sale Lot Numbers. All shall be available for inspection prior to sale.

**HEALTH STATUS:** The bulls offered for the sale have been vaccinated for IBR, PI-3, BRSV, 8 WAY BLACK LEG, HEAMOPHILUS, SOMNUS AND PASTEURILLA HAEMOLYTICA. All were treated for internal and external parasites.

**ALL CATTLE ARE SOLD:** Subject to such tests as required for export under regulations of the Health of Animals Branch, Department of Agriculture for Canada - those corresponding to Bureau of Animal Industry requirements.

**BREEDING GUARANTEE:** All cattle are sound and right, and all with a responsible breeder guarantee of satisfaction. In the event of any unlikely dispute, the regular terms and conditions, standard with the Canadian Aberdeen Angus Association shall apply.

**HOLDING AND SHIPMENTS:** Approximately one week is required for export transfers and other documents to be processed. Export animals will be held at no charge and under excellent care. Joint export shipping

arrangements to attain minimum shipping cost will gladly be made if instructions to that effect are provided to clerk of the sale when settlement is made.

**INTEREST:** The Cattleman's Connection Consignors reserve the right to retain an interest in any of the animals selling.

**INSURANCE:** Ownership risk to purchaser commences when the Auctioneer's hammer falls. Livestock coverage will be available at the Clerk's desk from the appointed representatives on sale day, also from the Sales Management at any time.

**TERMS OF SALE:** Are cash or cheque at par, payable to Clerks of the Sale on Sale Day. US funds accepted at the current rate of exchange. No release will be given until satisfactory settlement has been made. We reserve the right to withhold animals from export shipment for whom payments have not been received prior to departure times.

**ALL PERSONS** who attend the Sale do so at their own risk, and the Owners, Sale Management and Sale Staff assume no liability, legal or otherwise, for property loss or for any accidents that may occur.



# CATTLEMAN'S CONNECTION ANGUS BULL SALE 2014

## SPECIAL OFFERS TO BUYERS

### TRUCKING

Cattleman's Connection consignors will deliver bulls at cost to central stockyard locations in Canada. Cattleman's Connection Consignors will be more than willing to assist you in getting your bull delivered in a timely fashion and as affordable as possible.

### SIGHT UNSEEN PURCHASE PLAN

If you are unable to attend sale day, you may call or send bids to the consignors or any member of the sales management team. Those who are interested in this plan are urged to contact anyone of the consignors to discuss your bull requirements and determine a budget. Every effort will be made to buy you the right bull or bulls, at the right price to make you a repeat customer. If for any reason you are not satisfied with any of the cattle you purchased on order, you are under no obligation to accept them.

**SIGHT UNSEEN  
PURCHASE  
PLAN**

### WINTERING POLICY

Wintering of bulls is free until April 1st, 2014. We ask purchasers to state their intentions for wintering at the time of settlement. *We strongly encourage you to insure your bulls under this policy.*

### CATTLEMAN'S CONNECTION BULL WARRANTY

Cattleman's Connection guarantees to sell you a bull that is structurally sound, a bull that has passed a semen test and a breeding soundness evaluation by a licensed veterinarian. Should any Cattleman's Connection bull fail to be a satisfactory breeder - unable to physically service a cow or heifer - he will be replaced with a bull of equal value. Should this not be possible, an adjustment will be made to reflect the value of the bull in question, or a credit will be given towards the purchase of another bull.

### IN SHORT, WE GUARANTEE TO PROVIDE YOU WITH A SOUND, BREEDING BULL.

We, however, will not provide replacement or adjustment for physical injury or mismanagement. Bearing this in mind, we stress the importance of insurance on your bull. At no time shall the seller's liability exceed the purchase price of the bull. Should you have a problem with your bull, call

us right away. We will work with you to make sure you are satisfied with your Cattleman's Connection bull.

*Brookmore & HBH Farms use Canadian Angus Performance Program whole herd reporting.*



## UNDERSTANDING ULTRASOUND

The first thing producers want to know about ultrasound is: How accurate is it? The answer to the question depends on who does the actual scanning of the animals and who interprets the images. Ultrasound data in this catalogue was collected and analyzed by a technician that is certified by AUP and CUP. This means that this technician has met the standards set by many breed associations. The accuracy, although not perfect, is high enough that bulls selected based on ultrasound, results in positive genetic change in progeny carcass traits. Heritability for carcass traits are moderate to high, which is slightly higher than birth weights, weaning weights, and yearling weights.

**MARBLING (MARB)** - Marbling is the best indicator that we have to tell us what kind of eating experience we will have when eating beef. Extensive research shows that average AAA and above marbling produces the most satisfied consumers. As marbling increases so does the juiciness, the flavorfulness, and the tenderness. This may not always be true but for the most part AAA marbling produces more satisfied customers than does A or AA marbling carcasses.

CARCASS	
MARB	5.70
BF	5.71
REA	13.38
%LMY	63.78

3.00 - 3.99	Single A	Standard
4.00 - 4.99	Double AA	Select
above 5.00	Triple AAA	Choice

### BACK FAT (BF mm)

Fat depth influences lean meat yield. Fat bulls have less lean meat/muscle in the carcass. The fat measurement also gives an indication of the bulls fleshing ability. Calves from a bull with very little fat may finish too slowly in the feedlot. Body condition score (fat depth) in females is related to their ability to reach puberty at an early age, produce milk, rebreed, and maintain a short calving interval. On the other hand, bulls carrying excessive fat may suffer reduced fertility.

### RIBEYE AREA (REA in<sup>2</sup>)

The REA is the largest muscle in the body at birth, so REA gives an indication of overall carcass muscling (measured in inches)

### CUTABILITY (% LMY)

Cutability is the percentage lean meat yield in the carcass. Yield grade is an important factor in both Canada and the U.S.A. Producing calves with a high genetic potential for this trait can be an important objective of a breeding program. Back fat will reduce yield by 7 to 8 times what REA will increase yield.

### SUMMARY

Like all traits we should avoid the extremes. Moderation is the key. As producers we need to evaluate our own females and then decide what kind of progeny we want to produce and this should dictate what kind of sire we want to purchase.

**All Bulls Ultrasounded by Rod Wendorff on Jan. 18, 2014  
(AUP - CUP Certified)**

## EXPECTED PROGENY DIFFERENCES - EPDS

EPDs are an estimate of how future progeny of each sire can be expected to perform in each of the traits listed. EPDs are followed by % Accuracy - the higher the Accuracy, the higher the reliability.

**BW: Birth Weight EPD** - expressed in pounds, is a predictor of a sire's ability to transmit birth weight to his progeny compared to that of other sires.

**WW: Weaning Weight EPD** - expressed in pounds, is a predictor of a sire's ability to transmit weaning growth to his progeny compared to that of other sires. Weaning weight is an indicator of growth from birth to weaning (205 days of age). The calf's growth during this period is influenced by its own ability to grow plus its mother's maternal abilities.

**YW: Yearling Weight EPD** - expressed in pounds, is a predictor of a sire's ability to transmit yearling growth to his progeny compared to that of other sires.

**MILK: Milk EPD** - is an indicator of milking ability in daughters. It represents the differences in weaning weights of calves due to the amount of milk produced by their mothers. It is expressed in pounds of calf weaned.

**TM: Total Maternal EPD** - is a combination of the weaning weight and milk EPDs. It is calculated as: 1/2 Weaning Weight EPD + Milk EPD = Total Maternal. This EPD represents the differences in weaning weights between calves due to mothering and milking ability of their dams.

### AVERAGE EPDS - CANADIAN BLACK ANGUS BORN IN 2013

ACT. BW	ACT. WW	ADJ. 205	ADJ. 365	EPDS				
				BW	WW	YW	MILK	TM
				+2.7	+43	+76	+19	+41

NOTES

**CATTLEMAN'S  
CONNECTION**

*Thank You*  
for your interest in our programs  
We appreciate your support  
over 19 years of bull sales!

DjH Douglas J. Henderson  
& Associates Ltd.

P.O. Box 5900, Lacombe, Alberta T4L 1X4



LOT 7



LOT 70



LOT 97



RETURN POSTAGE GUARANTEED  
PORT DE RETOUR GARANTI

**BROOKMORE**  
=ANGUS=



19<sup>th</sup> Annual  
**CATTLEMAN'S  
CONNECTION**  
**Black Angus  
Bull Sale**

*Bulls for the  
Working Man*



FRIDAY, MARCH 7, 2014