

15th Annual

CATTLEMAN'S CONNECTION

Bull Sale

Friday, March 5, 2010

**Heartland Livestock
Brandon, Manitoba**



Grant Rolston

15TH
ANNUAL

CATTLEMAN'S CONNECTION



BLACK ANGUS BULL SALE

FRIDAY, MARCH 5, 2010 - 1:00 P.M.

HEARTLAND LIVESTOCK YARDS, BRANDON, MANITOBA

STORM DATE: March 8, 2010 - listen to 880 CKLQ Radio for storm date information

SALE HEADQUARTERS: Lakeview Inn & Suites
1880 18th Street North, Brandon, Manitoba - (204) 728-1880

SELLING: 120 YEARLING BLACK ANGUS BULLS

(All Guaranteed Breeders)

SALE DAY PHONE: 204-727-1431

- **WE STAND BEHIND WHAT WE SELL** - all bulls will be semen tested & breeding soundness evaluated
- **SIGHT UNSEEN PURCHASE PLAN** - your satisfaction guaranteed
- **WINTERING POLICY** - free board on bulls until April 1, 2010
- **POUNDS** - generations of bred on muscle, without sacrificing maternal traits
- **CALVING EASE** - 30% of the bulls selling are suitable for heifers
- **ALL BULLS** - carcass evaluated through ultrasound

Join us for lunch at 11:30 am

AUCTIONEER: Brent Carey
403-549-2478 Cel: 403-650-9028

RINGMEN:
Ryan Dorran - 403-226-2985 Cel: 403-507-6483
Dave Hasson - 519-546-4145

PHOTOGRAPHER:
Grant Rolston Photography Ltd.
403-593-2217



View the catalogue on-line
with updated weights &
scrotal measurements at

www.mountainviewfarms.ca



MARKETING AGENT:
Venture Livestock
Wayne Burgess 403-813-8416

CONSIGNORS

MOUNTAIN VIEW FARMS LTD.

Scott & Orcia Anderson
Bo & Gloria Wohlers

SWAN RIVER, MANITOBA

Phone: (204) 734-2503 Fax: (204) 734-5074
Scott Cel: (204) 734-8821 email: mtnview@mts.net

BROOKMORE ANGUS

Jack & Barb Hart

BROOKDALE, MANITOBA

(204) 476-2607

Cel: (204) 476-6696

CATTLEMAN'S CONNECTION

On behalf of everyone at Brookmore Angus and Mountain View Farms we would like to invite everyone to our 15th Annual Cattleman's Connection Bull Sale.

A lot has changed over the last 15 years in the cattle industry. But raising bulls for the commercial cattleman has not changed that much. They demand sound, athletic bulls that can get out and move freely. Calving ease and performance bulls. Bulls with eye appeal, hair, thickness, strong maternal traits and carcass traits.

MVF and Brookmore have listened to their commercial customers and paid special attention to detail in their breeding programs. Always using proven herd sires that produce progeny that give our customers a competitive edge.

As you turn the pages in this book you will see pedigrees stacked with breed leaders for performance, maternal and carcass traits. Most of the bulls selling have EPDs in the top percentiles of the Angus breed for performance and maternal traits.

Buy your next herd bull from an outfit that understands the beef industry and are raising bulls that will always be in demand. Bulls with tons of performance and backed by generations of proven genetics. These bulls sell with our personal guarantee for soundness and fertility and complete satisfaction.

Please join us for lunch at 11:30 sale day. For additional information please feel free to call Jack, Scott or any of our capable sales staff.

Yours truly,
Cattleman's Connection Group



SCOTT & ORYCIA ANDERSON
AARON & MARK



JACK & BARB HART

CATTLEMAN'S CONNECTION ANGUS BULL SALE 2010

SPECIAL OFFERS TO BUYERS

TRUCKING

Cattleman's Connection consignors will deliver bulls at cost to central stockyard locations in Canada. Cattleman's Connection Consignors will be more than willing to assist you in getting your bull delivered in a timely fashion and as affordable as possible.

SIGHT UNSEEN PURCHASE PLAN

If you are unable to attend sale day, you may call or send bids to the consignors or any member of the sales management team. Those who are interested in this plan are urged to contact anyone of the consignors to discuss your bull requirements and determine a budget. Every effort will be made to buy you the right bull or bulls, at the right price to make you a repeat customer. If for any reason you are not satisfied with any of the cattle you purchased on order, you are under no obligation to accept them.

SIGHT UNSEEN
PURCHASE
PLAN

WINTERING POLICY

Wintering of bulls is free until April 1st, 2010. We ask purchasers to state their intentions for wintering at the time of settlement. *We strongly encourage you to insure your bulls under this policy.*

CATTLEMAN'S CONNECTION BULL WARRANTY

Cattleman's Connection group guarantees to sell you a bull that is structurally sound, a bull that has passed a semen test and a breeding soundness evaluation by a licensed veterinarian. Should any Cattleman's Connection bull fail to be a satisfactory breeder - unable to physically service a cow or heifer - he will be replaced with a bull of equal value. Should this not be possible, an adjustment will be made to reflect the value of the bull in question, or a credit will be given towards the purchase of another bull.

IN SHORT, WE GUARANTEE TO PROVIDE YOU WITH A SOUND, BREEDING BULL.

We, however, will not provide replacement or adjustment for physical injury or mismanagement. Bearing this in mind, we stress the importance of insurance on your bull. At no time shall the seller's liability exceed the purchase price of the bull. Should you have a problem with your bull, call us right away. We will work with you to make sure you are satisfied with your Cattleman's Connection bull.



Mountain View Farms Ltd. & Brookmore Angus use Canadian Angus Performance Program whole herd reporting.

UNDERSTANDING ULTRASOUND

The first thing producers want to know about ultrasound is: How accurate is it? The answer to the question depends on who does the actual scanning of the animals and who interprets the images. Ultrasound data in this catalogue was collected and analyzed by a technician that is certified by AUP and CUP. This means that this technician has met the standards set by many breed associations. The accuracy, although not perfect, is high enough that bulls selected based on ultrasound, results in positive genetic change in progeny carcass traits. Heritability for carcass traits are moderate to high, which is slightly higher than birth weights, weaning weights, and yearling weights.

MARBLING (MAR.) - Marbling is the best indicator that we have to tell us what kind of eating experience we will have when eating beef. Extensive research shows that average AAA and above marbling produces the most satisfied consumers. As marbling increases so does the juiciness, the flavorfulness, and the tenderness. This may not always be true but for the most part AAA marbling produces more satisfied customers than does A or AA marbling carcasses.

CARCASS	
MAR.	5.56
BF	9.10
REA	15.55
%LMY	61.94

3.00 - 3.99	Single A	Standard
4.00 - 4.99	Double AA	Select
above 5.00	Triple AAA	Choice

BACK FAT (BF mm)

Fat depth influences lean meat yield. Fat bulls have less lean meat/muscle in the carcass. The fat measurement also gives an indication of the bulls fleshing ability. Calves from a bull with very little fat may finish too slowly in the feedlot. Body condition score (fat depth) in females is related to their ability to reach puberty at an early age, produce milk, rebreed, and maintain a short calving interval. On the other hand, bulls carrying excessive fat may suffer reduced fertility.

RIBEYE AREA (REA in²)

The REA is the largest muscle in the body at birth, so REA gives an indication of overall carcass muscling (measured in inches)

CUTABILITY (% LMY)

Cutability is the percentage lean meat yield in the carcass. Yield grade is an important factor in both Canada and the U.S.A. Producing calves with a high genetic potential for this trait can be an important objective of a breeding program. Back fat will reduce yield by 7 to 8 times what REA will increase yield.

SUMMARY

Like all traits we should avoid the extremes. Moderation is the key. As producers we need to evaluate our own females and then decide what kind of progeny we want to produce and this should dictate what kind of sire we want to purchase.

**All Bulls Ultrasounded by Rod Wendorff
(AUP - CUP Certified)**

EXPECTED PROGENY DIFFERENCES - EPDS

EPDs are an estimate of how future progeny of each sire can be expected to perform in each of the traits listed. EPDs are followed by % Accuracy - the higher the Accuracy, the higher the reliability.

BW: Birth Weight EPD - expressed in pounds, is a predictor of a sire's ability to transmit birth weight to his progeny compared to that of other sires.

WW: Weaning Weight EPD - expressed in pounds, is a predictor of a sire's ability to transmit weaning growth to his progeny compared to that of other sires. Weaning weight is an indicator of growth from birth to weaning (205 days of age). The calf's growth during this period is influenced by its own ability to grow plus its mother's maternal abilities.

YW: Yearling Weight EPD - expressed in pounds, is a predictor of a sire's ability to transmit yearling growth to his progeny compared to that of other sires.

MILK: Milk EPD - is an indicator of milking ability in daughters. It represents the differences in weaning weights of calves due to the amount of milk produced by their mothers. It is expressed in pounds of calf weaned.

TM: Total Maternal EPD - is a combination of the weaning weight and milk EPDs. It is calculated as: 1/2 Weaning Weight EPD + Milk EPD = Total Maternal. This EPD represents the differences in weaning weights between calves due to mothering and milking ability of their dams.

AVERAGE EPDS - CANADIAN BLACK ANGUS BORN IN 2009

ACTUAL BW	ADJ. 205	ADJ. 365	EPDS					DAM'S AGE
			BW	WW	YW	MILK	TM	
			+3.0	+40	+71	+17	+37	

CATTLEMAN'S CONNECTION ANGUS BULL SALE 2010



LOT 1
MVF RICOCHET 85W



LOT 2 - MVF RICOCHET 46W

1

MVF RICOCHET 85W

MALE ABA 85W 1524854 FEBRUARY 05 2009

ROTH REGULATOR 0405
BJ'S RICOCHET 7R 1250151
SANDY BAR DUCHESS 33G

GDAR SVF RUSS 184B
BEAR MTN LADY ERALINE 302
BAR 20 RAINMAKER 344D
SANDY BAR DUCHESS 1A

CARCASS	
MAR.	5.25
BF	7.62
REA	13.24
%LMY	61.72

TC STOCKMAN 365
MVF GEORGINA 10K 1017146
WAVY GEORGINA 2C

TC STOCKMAN
TC PRIDE 0014
RITO 2100 G D A R
WAVY GEORGINA 1S

ACTUAL BW	ADJ. 205	ADJ. 365	EPDS							DAM'S AGE		
			BW	WW	YW	MILK	TM					
91	830	1451	+4.0	34%	+45	25%	+73	16%	+19	14%	+42	9

- Act. WW Oct. 23/09: 978 lbs.
- Maternal brother sold at the 2009 Cattleman's Connection Bull Sale to Lee Garrett, Woodworth, ND for \$5,900.00
- Another maternal brother was the Reserve Senior Bull Calf Champion at the 2004 CWA
- A maternal sister sold at the 75th MVF Anniversary Sale to Legend Lane Angus, Brunner, ON for \$4,600.00, another maternal sister sold at the 2004 MVF Production Sale for \$3,600.00 also to Legend Lane
- A very powerful bull from a cow family that consistently produces the kind of cattle that are in demand

2

MVF RICOCHET 46W

MALE ABA 46W 1524848 JANUARY 23 2009

ROTH REGULATOR 0405
BJ'S RICOCHET 7R 1250151
SANDY BAR DUCHESS 33G

GDAR SVF RUSS 184B
BEAR MTN LADY ERALINE 302
BAR 20 RAINMAKER 344D
SANDY BAR DUCHESS 1A

CARCASS	
MAR.	5.70
BF	10.49
REA	14.32
%LMY	59.66

MVBL ASSET 42H
N.B.A. HI LITE 58L 1057034
MVF HI LITE 39J

TC STOCKMAN 365
MVRB TIBBIE 18D
CONNEALY DATELINE
MVF HI LITE 66F

ACTUAL BW	ADJ. 205	ADJ. 365	EPDS							DAM'S AGE		
			BW	WW	YW	MILK	TM					
95	934	1362	+4.8	31%	+48	22%	+83	14%	+17	12%	+41	8

- Act. WW Oct. 23/09: 1155 lbs.
- A maternal brother sold at the 2009 Cattleman's Connection Bull Sale to Joe Bouchard, Fisher Branch, MB for \$3,750.00
- MVF Hi Lite 39J was the 2000 National Heifer Calf Champion and was a very prolific producer for Trevor White's Northern Black Angus herd in Smithers, BC
- Check out this bull's ultra sound data

BJ'S RICOCHET 7R

BW: +6.6 WW: +65 YW: +102 Milk: +19 TM: +52 YG: +38

9 SONS SELL



CATTLEMAN'S CONNECTION ANGUS BULL SALE 2010



LOT 3
MVF RICOCHET 48W



LOT 4
MVF RICOCHET 59W

3

MVF RICOCHET 48W

MALE ABA 48W 1524910 JANUARY 24 2009

ROTH REGULATOR 0405
BJ'S RICOCHET 7R 1250151
SANDY BAR DUCHESS 33G

GDAR SVF RUSS 184B
BEAR MTN LADY ERALINE 302
BAR 20 RAINMAKER 344D
SANDY BAR DUCHESS 1A

G A R GRID MAKER NHF AMF
MVF TIBBIE 80R 1290364
MVF TIBBIE 28C

G D A R TRAVELER 044 NHF AMF
G A R PRECISION 2536 NHF AMC
V D A R NEW TREND 315 NHF AMF
MVF TIBBIE 48W

CARCASS	
MAR.	4.65
BF	5.75
REA	13.43
%LMY	63.79

ACTUAL BW	ADJ. 205	ADJ. 365	EPDS					DAM'S AGE				
			BW	WW	YW	MILK	TM					
87	835	1400	+4.0	34%	+54	24%	+91	16%	+15	12%	+42	4

- Act. WW Oct. 23/09: 1008 lbs.
- Dam is a moderate framed, perfect uddered, easy fleshing Grid Maker Daughter
- MVF Tibbie 28C has produced many top selling females through our production sales that have gone on to be outstanding producers for their owners

4

MVF RICOCHET 59W

MALE ABA 59W 1524913 JANUARY 30 2009

ROTH REGULATOR 0405
BJ'S RICOCHET 7R 1250151
SANDY BAR DUCHESS 33G

GDAR SVF RUSS 184B
BEAR MTN LADY ERALINE 302
BAR 20 RAINMAKER 344D
SANDY BAR DUCHESS 1A

MVF HEADS UP 029M
MVF TIBBIE 349R 1304750
MVF TIBBIE 124N

ANGUS ACRES HEADS UP 31D
MVF TIBBIE 10G
MVF DATELINE 156L
MVF TIBBIE 030L

CARCASS	
MAR.	4.75
BF	8.59
REA	13.02
%LMY	60.55

ACTUAL BW	ADJ. 205	ADJ. 365	EPDS					DAM'S AGE				
			BW	WW	YW	MILK	TM					
98	832	1468	+6.0	34%	+50	23%	+85	14%	+14	10%	+39	4

- Act. WW Oct. 23/09: 954 lbs.
- Extremely well balanced, thick topped calf

TAKE ADVANTAGE
OF OUR WINTERING POLICY

We offer free board on bulls
until April 1, 2010

CATTLEMAN'S CONNECTION ANGUS BULL SALE 2010



LOT 6
MVF RICOCHET 76W

5

MVF RICOCHET 70W

MALE ABA 70W 1524978 FEBRUARY 03 2009

ROTH REGULATOR 0405
BJ'S RICOCHET 7R 1250151
SANDY BAR DUCHESS 33G

GDAR SVF RUSS 184B
BEAR MTN LADY ERALINE 302
BAR 20 RAINMAKER 344D
SANDY BAR DUCHESS 1A

CARCASS	
MAR.	5.90
BF	14.34
REA	14.63
%LMY	55.99

MVF VRD DATELINE 913P AMF
MVF TIBBIE 102S 1346842
MVF TIBBIE 25N

VERMILION DATELINE 7078 NHF AMF
MVF LADY DI 60K
BON VIEW NEW DESIGN 878 NHF AMF
BXB FIRST DATE 208L

ACTUAL BW	ADJ. 205	ADJ. 365	EPDS					DAM'S AGE
			BW	WW	YW	MILK	TM	
95	1046	1553	+5.0 32%	+62 23%	+102 14%	+22 10%	+53	3

- Act. WW Oct. 23/09: 1260 lbs.
- Maternal brother sold at the 2009 Cattleman's Connection Bull Sale to John Magarrell, Domain, MB for \$4,000.00
- Dam was the undefeated Heifer Calf Champion in 2006; MB Beef Expo Heifer Calf Champion, Edmonton Farmfair Spring Heifer Calf Champion, CWA Junior Heifer Calf Champion
- MVF Tibbie 25N and BXB First Date 208L are both embryo donors at MVF
- Big ribeye and high marbling score
- Ricochet 70W is a powerful bull with tremendous EPDs that will most definitely put those extra pounds on your calf crop



LOT 5 - MVF RICOCHET 70W

6

MVF RICOCHET 76W

MALE ABA 76W 1524918 FEBRUARY 04 2009

ROTH REGULATOR 0405
BJ'S RICOCHET 7R 1250151
SANDY BAR DUCHESS 33G

GDAR SVF RUSS 184B
BEAR MTN LADY ERALINE 302
BAR 20 RAINMAKER 344D
SANDY BAR DUCHESS 1A

CARCASS	
MAR.	5.10
BF	7.62
REA	13.14
%LMY	61.64

CONNEALY FREIGHTLINER NHF AMF
MVF TIBBIE 43S 1346868
MVF TIBBIE 38P

BON VIEW BANDO 598 AMF
JOANA ERICA OF CONANGA
NICHOLS EXTRA H6 NHF AMF
MVF TIBBIE 12M

ACTUAL BW	ADJ. 205	ADJ. 365	EPDS					DAM'S AGE
			BW	WW	YW	MILK	TM	
97	843	1492	+4.6 34%	+56 24%	+95 15%	+21 12%	+49	3

- Act. WW Oct. 23/09: 950 lbs.
- Maternal brother sold at the 2009 Cattleman's Connection Bull sale to John Magarrell, Domain, MB for \$3,500.00
- Dam is a maternal sister to MVF Tibbie 148U, the Heifer Calf Champion and Reserve Champion Female 2008 MB Beef Expo and top selling heifer calf at the 2008 MVF Production Sale for \$8,750.00 to Gaberts at Fort Saskatchewan, AB

7

MVF RICOCHET 78W

MALE ABA 78W 1524852 TW FEBRUARY 04 2009

ROTH REGULATOR 0405
BJ'S RICOCHET 7R 1250151
SANDY BAR DUCHESS 33G

GDAR SVF RUSS 184B
BEAR MTN LADY ERALINE 302
BAR 20 RAINMAKER 344D
SANDY BAR DUCHESS 1A

CARCASS	
MAR.	4.70
BF	8.18
REA	13.91
%LMY	61.68

VERMILION DATELINE 7078 NHF AMF
MVF TIPTOP 73N 1175025
BICKFORD TIPTOP 25Z

CONNEALY DATELINE
VERMILION BLACKBIRD 5044
Q A S TRAVELER 23-4 NHF AMF
BICKFORD TIPTOP 62W

ACTUAL BW	ADJ. 205	ADJ. 365	EPDS					DAM'S AGE
			BW	WW	YW	MILK	TM	
94	863	1393	+4.6 5%	+50 5%	+86 5%	+14 5%	+39	6

- Act. WW Oct. 23/09: 1020 lbs.
- Full brother sells as Lot 8

CATTLEMAN'S CONNECTION ANGUS BULL SALE 2010



LOT 8 - MVF RICOCHET 79W

8

MVF RICOCHET 79W

MALE ABA 79W 1530271 TW FEBRUARY 04 2009

ROTH REGULATOR 0405
BJ'S RICOCHET 7R 1250151
SANDY BAR DUCHESS 33G

GDAR SVF RUSS 184B
BEAR MTN LADY ERALINE 302
BAR 20 RAINMAKER 344D
SANDY BAR DUCHESS 1A

CARCASS

MAR.	5.00
BF	9.54
REA	13.13
%LMY	59.66

VERMILION DATELINE 7078 NHF AMF
MVF TIPTOP 73N 1175025
BICKFORD TIPTOP 25Z

CONNELLY DATELINE
VERMILION BLACKBIRD 5044
Q A S TRAVELER 23-4 NHF AMF
BICKFORD TIPTOP 62W

ACTUAL BW	ADJ. 205	ADJ. 365	EPDS					DAM'S AGE
			BW	WW	YW	MILK	TM	
93	824	1372	+4.6 5%	+50 5%	+86 5%	+14 5%	+39	6

- Act. WW Oct. 23/09: 974 lbs.
- Full brother sells as Lot 7

9

MVF RICOCHET 92W

MALE ABA 92W 1524919 FEBRUARY 08 2009

ROTH REGULATOR 0405
BJ'S RICOCHET 7R 1250151
SANDY BAR DUCHESS 33G

GDAR SVF RUSS 184B
BEAR MTN LADY ERALINE 302
BAR 20 RAINMAKER 344D
SANDY BAR DUCHESS 1A

CARCASS

MAR.	5.60
BF	6.69
REA	11.37
%LMY	61.64

MVF VRD DATELINE 13M
MVF DOLLY 328R 1304743
MVF DOLLY 231M

VERMILION DATELINE 7078 NHF AMF
MVF ZARA LISA 24F
MVF STOCKMAN 79K
DARLENE DOLLY OF N.B.A. 3K

ACTUAL BW	ADJ. 205	ADJ. 365	EPDS					DAM'S AGE
			BW	WW	YW	MILK	TM	
90	811	1318	+4.1 33%	+52 23%	+90 14%	+15 10%	+41	4

- Act. WW Oct. 23/09: 900 lbs.
- Maternal brother sold at the 1999 Cattleman's Connection Bull Sale to Roger Griffith, ON for \$2,800.00

MVF

MOUNTAIN VIEW FARMS

&

BROOKMORE

BROOKMORE ANGUS

have over

110 YEARS

combined breeding Angus

Now that's
LONGEVITY!



**OFFSPRING FROM BULLS PURCHASED
AT CATTLEMAN'S CONNECTION QUALIFY
FOR THE CANADIAN ANGUS
CERTIFICATION PROGRAM**

For tags & more info contact:
Canadian Angus Association

1-866-571-8093

www.cdnangus.ca



CAN'T MAKE THE SALE?

Remember - we are just
a phone call away!

CATTLEMAN'S CONNECTION ANGUS BULL SALE 2010



LOT 10
MYF GRID MAKER 42W



LOT 12 - MYF GRID MAKER 25W

10 MYF GRID MAKER 42W

MALE ABA 42W 1525017 JANUARY 22 2009

G D A R TRAVELER 044 NHF AMF
G A R GRID MAKER NHF AMF 1129870
G A R PRECISION 2536 NHF AMC

D H D TRAVELER 6807 NHF AMF
G D A R BLACKCAP LADY 840
G A R PRECISION 1680 NHC AMC
G A R EXT 2104

CARCASS	
MAR.	4.60
BF	7.14
REA	14.65
%LMY	63.36

NICHOLS EXTRA H6 NHF AMF
MYF TIBBIE 616S 1346557
MVHF TIBBIE 39B

N BAR EMULATION EXT NHF AMF
NICHOLS EILEEN MAY F261
V D A R NEW TREND 315 NHF AMF
MVHF TIBBIE 31Z

ACTUAL BW	ADJ. 205	ADJ. 365	EPDS					DAM'S AGE
			BW	WW	YW	MILK	TM	
91	905	1499	+4.8 33%	+59 25%	+106 20%	+17 21%	+47	3

- Act. WW Oct. 23/09: 1075 lbs.
- Stout, powerful Grid Maker Son

11 MYF GRID MAKER 38W

MALE ABA 38W 1524846 JANUARY 20 2009

G D A R TRAVELER 044 NHF AMF
G A R GRID MAKER NHF AMF 1129870
G A R PRECISION 2536 NHF AMC

D H D TRAVELER 6807 NHF AMF
G D A R BLACKCAP LADY 840
G A R PRECISION 1680 NHC AMC
G A R EXT 2104

CARCASS	
MAR.	5.90
BF	5.24
REA	14.25
%LMY	64.97

TC STOCKMAN 365
MYF TIBBIE 115K 1011788
RRD TIBBIE 12E

TC STOCKMAN
TC PRIDE 0014
RITO 2100 G D A R
MYF TIBBIE 16C

ACTUAL BW	ADJ. 205	ADJ. 365	EPDS					DAM'S AGE
			BW	WW	YW	MILK	TM	
90	741	1300	+4.7 35%	+46 26%	+86 20%	+11 22%	+34	9

- Act. WW Oct. 23/09: 922 lbs.
- Maternal sister was the Intermediate Heifer Calf Champion at the 2006 CWA and sold to Tanya Belsham, Houston, BC for \$6,100.00
- RRD Tibbie 12E was the \$26,000.00 top selling female at the 2000 MVF Production Sale to Staneylane Angus, Virden, MB

12 MYF GRID MAKER 25W

MALE ABA 25W 1524845 JANUARY 12 2009

G D A R TRAVELER 044 NHF AMF
G A R GRID MAKER NHF AMF 1129870
G A R PRECISION 2536 NHF AMC

D H D TRAVELER 6807 NHF AMF
G D A R BLACKCAP LADY 840
G A R PRECISION 1680 NHC AMC
G A R EXT 2104

CARCASS	
MAR.	5.40
BF	14.60
REA	14.94
%LMY	55.97

WESTERN WIDESPREAD 1L
MYF TIBBIE 216P 1222310
MYF TIBBIE 192H

WHITSTONE WIDESPREAD MB NHF AMF
BDM BLUE LADY ERICA 126'95
BROOKMORE LANCER 32F
RRD TIBBIE 12E

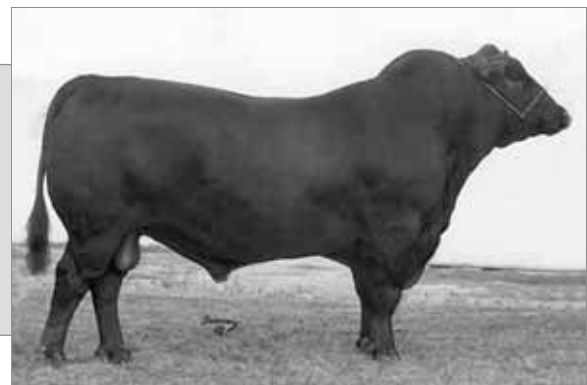
ACTUAL BW	ADJ. 205	ADJ. 365	EPDS					DAM'S AGE
			BW	WW	YW	MILK	TM	
89	917	1480	+4.0 34%	+56 25%	+98 19%	+12 21%	+40	5

- Act. WW Oct. 23/09: 1180 lbs.
- Maternal sister sold to RRD Ranch, Maidstone, SK at the 2009 MVF Production Sale for \$4,800.00

G A R GRID MAKER

BW: +5.9 WW: +68 YW: +120 Milk: +10 TM: +44 YG: +52

3 SONS SELL



CATTLEMAN'S CONNECTION ANGUS BULL SALE 2010



LOT 13
MVF NET WORTH 17W



LOT 15 - MVF NET WORTH 171W

13 MVF NET WORTH 17W

MALE ABA 17W 1524975 JANUARY 08 2009

S A V 8180 TRAVELER 004 NHF AMF
S A V NET WORTH 4200 NHF AMF 1309743
S A V MAY 2410

SITZ TRAVELER 8180 NHF AMF
BOYD FOREVER LADY 8003
S A F 598 BANDO 5175 AMF
S A V MAY 6269

CARCASS	
MAR.	5.20
BF	12.86
REA	17.30
%LMY	59.67

MVF VRD DATELINE 913P AMF
MVF TIBBIE 132S 1346853
MVF TIBBIE 252N

VERMILION DATELINE 7078 NHF AMF
MVF LADY DI 60K
DESSA TRAVELER 4E
MVF TIBBIE 113G

ACTUAL BW	ADJ. 205	ADJ. 365	EPDS					DAM'S AGE				
			BW	WW	YW	MILK	TM					
90	917	1496	+3.6	33%	+48	25%	+90	18%	+26	16%	+50	3

- Act. WW Oct. 23/09: 1145 lbs.
- Maternal sister sold to Norman Bednar, Vita, MB at the 2008 MVF Production Sale
- Check out this guy's ultra sound data: largest ribeye 17.30 square inches and a 5.20 marbling score

14 MVF NET WORTH 137W

MALE ABA 137W 1524864 FEBRUARY 18 2009

S A V 8180 TRAVELER 004 NHF AMF
S A V NET WORTH 4200 NHF AMF 1309743
S A V MAY 2410

SITZ TRAVELER 8180 NHF AMF
BOYD FOREVER LADY 8003
S A F 598 BANDO 5175 AMF
S A V MAY 6269

CARCASS	
MAR.	4.80
BF	9.54
REA	14.34
%LMY	60.65

TC STOCKMAN 365
MVRB TIBBIE 98K 1017527
MVRB TIBBIE 77E

TC STOCKMAN
TC PRIDE 0014
MINERTS FORTUNE 2000 NHF AMF
MVF TIBBIE 48W

ACTUAL BW	ADJ. 205	ADJ. 365	EPDS					DAM'S AGE				
			BW	WW	YW	MILK	TM					
91	813	1301	+4.7	36%	+48	27%	+89	20%	+20	19%	+44	9

- Act. WW Oct. 23/09: 912 lbs.

15 MVF NET WORTH 171W

MALE ABA 171W 1524872 FEBRUARY 24 2009

S A V 8180 TRAVELER 004 NHF AMF
S A V NET WORTH 4200 NHF AMF 1309743
S A V MAY 2410

SITZ TRAVELER 8180 NHF AMF
BOYD FOREVER LADY 8003
S A F 598 BANDO 5175 AMF
S A V MAY 6269

CARCASS	
MAR.	4.75
BF	7.62
REA	14.21
%LMY	62.51

MVF STOCKMAN 79K
MVF ELBA 291N 1183997
HOMESTEADER ELBA 8C

TC STOCKMAN 365
RRD TIBBIE 12E
G D A R EXECUTIVE 727 NHF AMF
TERRLENE ELBA 8U

ACTUAL BW	ADJ. 205	ADJ. 365	EPDS					DAM'S AGE				
			BW	WW	YW	MILK	TM					
93	822	1424	+4.8	32%	+41	24%	+79	18%	+23	18%	+44	6

- Act. WW Oct. 23/09: 900 lbs.
- Tremendous thickness and well balanced EPDs

S A V NET WORTH 4200

BW: +4.8 WW: +59 YW: +112 Milk: +32 TM: +62 YG: +53

- Net Worth is a performance power house. He recorded an individual 205 day weight of 995 lbs., a 365 day weight of 1573 lbs. with an 17.2 REA at scan time

18 SONS SELL



CATTLEMAN'S CONNECTION ANGUS BULL SALE 2010



LOT 16 - BROOKMORE NET WORTH 58W

16

BROOKMORE NET WORTH 58W

MALE JVJ 58W 1516060 AMF JANUARY 24 2009

S A V 8180 TRAVELER 004 NHF AMF
S A V NET WORTH 4200 NHF AMF 1309743
 S A V MAY 2410

SITZ TRAVELER 8180 NHF AMF
 BOYD FOREVER LADY 8003
 S A F 598 BANDO 5175 AMF
 S A V MAY 6269

CARCASS	
MAR.	6.00
BF	12.40
REA	16.54
%LMY	59.52

BOYD BEEF MAKER 3069 NHF AMC
BROOKMORE LADY JANE 97S AMC 1345773
 BROOKMORE LADY JANE 137L

C A FUTURE DIRECTION 5321 NHC AMC
 BOYD FOREVER LADY 7120
 ALBERDA TRAVELER 416 NHF AMF
 BROOKMORE LADY JANE 56A

ACTUAL BW	ADJ. 205	ADJ. 365	EPDS					DAM'S AGE
			BW	WW	YW	MILK	TM	
78	809	1572	+3.4 35%	+56 26%	+101 21%	+29 18%	+57	3

• Act. WW Oct. 3/09: 930 lbs.

17

BROOKMORE NET WORTH 60W

MALE JVJ 60W 1513331 JANUARY 25 2009

S A V 8180 TRAVELER 004 NHF AMF
S A V NET WORTH 4200 NHF AMF 1309743
 S A V MAY 2410

SITZ TRAVELER 8180 NHF AMF
 BOYD FOREVER LADY 8003
 S A F 598 BANDO 5175 AMF
 S A V MAY 6269

CARCASS	
MAR.	6.20
BF	11.44
REA	13.80
%LMY	58.27

BROOKMORE EXTRA GOLD 135J
KEMBAR LUCY 6L 1058180
 KEMBAR LUCY 126H

EBON HILL EXTRA GOLD 31'95
 BROOKMORE FLORA 40E
 S A F FAME NHF AMF
 KEMBAR LUCY 6A

ACTUAL BW	ADJ. 205	ADJ. 365	EPDS					DAM'S AGE
			BW	WW	YW	MILK	TM	
78	753	1411	+2.2 36%	+47 26%	+84 19%	+20 18%	+44	8

• Act. WW Oct. 3/09: 905 lbs.



LOT 18 - BROOKMORE NETWORK 65W

18

BROOKMORE NETWORK 65W

MALE JVJ 65W 1513164 JANUARY 26 2009

S A V 8180 TRAVELER 004 NHF AMF
S A V NET WORTH 4200 NHF AMF 1309743
 S A V MAY 2410

SITZ TRAVELER 8180 NHF AMF
 BOYD FOREVER LADY 8003
 S A F 598 BANDO 5175 AMF
 S A V MAY 6269

CARCASS	
MAR.	4.40
BF	13.81
REA	13.35
%LMY	55.48

MVF PERFECT BLEND 32H
BROOKMORE PRINCESS 62K 1001701
 BROOKMORE PRINCESS 106H

N BAR EMULATION EXT NHF AMF
 MVF TIBBIE 64F
 EBON HILL EXTRA GOLD 31'95
 BROOKMORE PRINCESS 29F

ACTUAL BW	ADJ. 205	ADJ. 365	EPDS					DAM'S AGE
			BW	WW	YW	MILK	TM	
106	688	1348	+7.3 36%	+43 27%	+85 21%	+21 19%	+43	9

• Act. WW Oct. 3/09: 816 lbs.



LOT 17
 BROOKMORE
 NET WORTH 60W

CATTLEMAN'S CONNECTION ANGUS BULL SALE 2010



LOT 19
BROOKMORE NET WORTH 71W



LOT 20
BROOKMORE NET WORTH 99W

19 BROOKMORE NET WORTH 71W

MALE JVJ 71W 1514082 TW JANUARY 26 2009

S A V 8180 TRAVELER 004 NHF AMF
S A V NET WORTH 4200 NHF AMF 1309743
S A V MAY 2410

SITZ TRAVELER 8180 NHF AMF
BOYD FOREVER LADY 8003
S A F 598 BANDO 5175 AMF
S A V MAY 6269

PF 7215 AVENGER 0232
BROOKMORE ELLEN 180P 1212000
BROOKMORE ELLEN 133G

WK APPEAL
ALGOMA GOLDEN SUMMER T112
EARLY SUNSET EXTRA 56B
BROOKMORE ELLEN 110B

CARCASS	
MAR.	5.30
BF	7.14
REA	13.15
%LMY	62.05

ACTUAL BW	ADJ. 205	ADJ. 365	EPDS					DAM'S AGE
			BW	WW	YW	MILK	TM	
90	764	1426	+5.0 5%	+50 5%	+89 5%	+25 5%	+49	5

• Act. WW Oct. 3/09: 912 lbs.

20 BROOKMORE NET WORTH 99W

MALE JVJ 99W 1513991 JANUARY 30 2009

S A V 8180 TRAVELER 004 NHF AMF
S A V NET WORTH 4200 NHF AMF 1309743
S A V MAY 2410

SITZ TRAVELER 8180 NHF AMF
BOYD FOREVER LADY 8003
S A F 598 BANDO 5175 AMF
S A V MAY 6269

VERMILION DATELINE 7078 NHF AMF
BROOKMORE PEARL 96N 1186686
MVF PEARL 20E

CONNELLY DATELINE
VERMILION BLACKBIRD 5044
MINERTS FORTUNE 2000 NHF AMF
ROY MAC PEARL 16C

CARCASS	
MAR.	4.70
BF	11.44
REA	14.10
%LMY	58.51

ACTUAL BW	ADJ. 205	ADJ. 365	EPDS					DAM'S AGE
			BW	WW	YW	MILK	TM	
92	799	1513	+4.8 36%	+54 27%	+97 21%	+25 19%	+52	6

• Act. WW Oct. 3/09: 940 lbs.

**WE STAND BEHIND
WHAT WE SELL!**

**All bulls are semen tested and
breeding soundness evaluated**

CATTLEMAN'S CONNECTION ANGUS BULL SALE 2010



LOT 21 - BROOKMORE NET WORTH 103W



LOT 24 - BROOKMORE NET WORTH 123W

21 BROOKMORE NET WORTH 103W

MALE JVJ 103W 1514163 FEBRUARY 01 2009

S A V 8180 TRAVELER 004 NHF AMF
S A V NET WORTH 4200 NHF AMF 1309743
S A V MAY 2410

SITZ TRAVELER 8180 NHF AMF
BOYD FOREVER LADY 8003
S A F 598 BANDO 5175 AMF
S A V MAY 6269

S A NEUTRON 377 NHF AMF
BROOKMORE HEROINE 81R 1293182
BROOKMORE HEROINE 90G

S A F NEUTRON NHF AMF
S A QUEEN SUSAN 102
EARLY SUNSET EXTRA 56B
BROOKMORE HEROINE 26C

CARCASS	
MAR.	5.40
BF	12.04
REA	16.02
%LMY	59.47

ACTUAL BW	ADJ. 205	ADJ. 365	EPDS					DAM'S AGE				
			BW	WW	YW	MILK	TM					
90	736	1364	+4.6	36%	+54	26%	+98	21%	+23	19%	+50	4

• Act. WW Oct. 3/09: 840 lbs.

24 BROOKMORE NET WORTH 123W

MALE JVJ 123W 1513738 FEBRUARY 04 2009

S A V 8180 TRAVELER 004 NHF AMF
S A V NET WORTH 4200 NHF AMF 1309743
S A V MAY 2410

SITZ TRAVELER 8180 NHF AMF
BOYD FOREVER LADY 8003
S A F 598 BANDO 5175 AMF
S A V MAY 6269

A A R REALLY WINDY 1205 NHF AMF
BROOKMORE TIBBIE 57M 1112717
BROOKMORE TIBBIE 73K

A A R WINDY RIDGE 362
A A R LADY KELTON 2170
DAVIS MILLENNIUM 7518
BROOKMORE TIBBIE 38E

CARCASS	
MAR.	4.85
BF	9.05
REA	16.19
%LMY	62.66

ACTUAL BW	ADJ. 205	ADJ. 365	EPDS					DAM'S AGE				
			BW	WW	YW	MILK	TM					
94	752	1391	+3.9	36%	+50	27%	+97	22%	+22	19%	+47	7

• Act. WW Oct. 3/09: 868 lbs.

22 BROOKMORE NET WORTH 107W

MALE JVJ 107W 1513338 FEBRUARY 01 2009

S A V 8180 TRAVELER 004 NHF AMF
S A V NET WORTH 4200 NHF AMF 1309743
S A V MAY 2410

SITZ TRAVELER 8180 NHF AMF
BOYD FOREVER LADY 8003
S A F 598 BANDO 5175 AMF
S A V MAY 6269

EBON HILL EQUALIZER 117'97
FREYBURN ENCHANTRESS 43L 1047702
BROOKMORE ENCHANTRESS 1H

BELVIN BLACK MAGIC 42'92
EBON HILL PRIDE 17'88
EBON HILL EXTRA GOLD 31'95
BROOKMORE ENCHANTRESS 17X

CARCASS	
MAR.	5.00
BF	12.87
REA	12.24
%LMY	54.54

ACTUAL BW	ADJ. 205	ADJ. 365	EPDS					DAM'S AGE				
			BW	WW	YW	MILK	TM					
84	775		+2.5	36%	+46	27%	+89	21%	+25	19%	+48	8

• Act. WW Oct. 3/09: 906 lbs.

25 BROOKMORE NET WORTH 137W

MALE JVJ 137W 1513972 FEBRUARY 05 2009

S A V 8180 TRAVELER 004 NHF AMF
S A V NET WORTH 4200 NHF AMF 1309743
S A V MAY 2410

SITZ TRAVELER 8180 NHF AMF
BOYD FOREVER LADY 8003
S A F 598 BANDO 5175 AMF
S A V MAY 6269

BJ'S KORONA 3L
MADSEN'S BELLE 9N 1179417
BOTANY ANGUS BELLE 93H

EBON HILL MAGIC MAN 41'97
SANDY BAR LINDA 6G
MVMW WESTERN RITO 47F
BOTANY ANGUS BELLE 26F

CARCASS	
MAR.	5.60
BF	15.66
REA	14.92
%LMY	54.87

ACTUAL BW	ADJ. 205	ADJ. 365	EPDS					DAM'S AGE				
			BW	WW	YW	MILK	TM					
84	717	1450	+3.1	36%	+45	26%	+87	18%	+22	18%	+45	6

• Act. WW Oct. 3/09: 825 lbs.

23 BROOKMORE NET WORTH 119W

MALE JVJ 119W 1513154 FEBRUARY 03 2009

S A V 8180 TRAVELER 004 NHF AMF
S A V NET WORTH 4200 NHF AMF 1309743
S A V MAY 2410

SITZ TRAVELER 8180 NHF AMF
BOYD FOREVER LADY 8003
S A F 598 BANDO 5175 AMF
S A V MAY 6269

HOLLBROOK 2100 19G
SARAMAR ROSEBUD 60J 996124
CRESCENT CREEK ROSEBUD 106F

RITO 2100 G D A R
HOLLBROOK SOCIALITE 12C
CRESCENT CREEK MAXIMUM 54C
CRESCENT CREEK ROSEBUD 38D

CARCASS	
MAR.	4.20
BF	7.62
REA	12.35
%LMY	60.99

ACTUAL BW	ADJ. 205	ADJ. 365	EPDS					DAM'S AGE				
			BW	WW	YW	MILK	TM					
100	757	1332	+6.3	36%	+48	27%	+89	20%	+19	19%	+43	10

• Act. WW Oct. 3/09: 876 lbs.

26 BROOKMORE NET WORTH 142W

MALE JVJ 142W 1514147 FEBRUARY 06 2009

S A V 8180 TRAVELER 004 NHF AMF
S A V NET WORTH 4200 NHF AMF 1309743
S A V MAY 2410

SITZ TRAVELER 8180 NHF AMF
BOYD FOREVER LADY 8003
S A F 598 BANDO 5175 AMF
S A V MAY 6269

S A NEUTRON 377 NHF AMF
BROOKMORE ROSEBUD BLOSSOM 43R 1293178
NU WAVE ROSEBUD BLOSSUM 9G

S A F NEUTRON NHF AMF
S A QUEEN SUSAN 102
YOUNG-FREY TOUCHSTONE 1E
OAK BEND ROSEBUD 208B

CARCASS	
MAR.	5.00
BF	9.60
REA	13.70
%LMY	60.08

ACTUAL BW	ADJ. 205	ADJ. 365	EPDS					DAM'S AGE				
			BW	WW	YW	MILK	TM					
68	666	1329	+1.4	36%	+43	26%	+91	20%	+20	19%	+42	4

• Act. WW Oct. 3/09: 746 lbs.

CATTLEMAN'S CONNECTION ANGUS BULL SALE 2010

LOT 27
BROOKMORE NET WORTH 151W



LOT 28
BROOKMORE NET WORTH 152W

27 BROOKMORE NET WORTH 151W

MALE JVJ 151W 1514041 FEBRUARY 08 2009

S A V 8180 TRAVELER 004 NHF AMF
S A V NET WORTH 4200 NHF AMF 1309743
S A V MAY 2410

SITZ TRAVELER 8180 NHF AMF
BOYD FOREVER LADY 8003
S A F 598 BANDO 5175 AMF
S A V MAY 6269

CARCASS	
MAR.	4.80
BF	12.38
REA	14.82
%LMY	58.14

VERMILION DATELINE 7078 NHF AMF
BROOKMORE KARAMA 109P 1212178
BROOKMORE KARAMA 159K

CONNEALY DATELINE
VERMILION BLACKBIRD 5044
BROOKMORE TOUCHSTONE 2F
BROOKMORE KARAMA 70T

ACTUAL BW	ADJ. 205	ADJ. 365	EPDS					DAM'S AGE
			BW	WW	YW	MILK	TM	
100	814	1449	+5.8 34%	+55 26%	+102 20%	+23 19%	+51	5

• Act. WW Oct. 3/09: 925 lbs.

29 BROOKMORE NET WORTH 159W

MALE JVJ 159W 1513165 FEBRUARY 10 2009

S A V 8180 TRAVELER 004 NHF AMF
S A V NET WORTH 4200 NHF AMF 1309743
S A V MAY 2410

SITZ TRAVELER 8180 NHF AMF
BOYD FOREVER LADY 8003
S A F 598 BANDO 5175 AMF
S A V MAY 6269

CARCASS	
MAR.	5.00
BF	11.44
REA	13.71
%LMY	58.19

DAVIS MILLENNIUM 7518
BROOKMORE TIBBIE 73K 1001487
BROOKMORE TIBBIE 38E

N BAR EMULATION EXT NHF AMF
FINKS 982 OF 666 N T
MINERTS FORTUNE 2000 NHF AMF
BROOKMORE TIBBIE 30B

ACTUAL BW	ADJ. 205	ADJ. 365	EPDS					DAM'S AGE
			BW	WW	YW	MILK	TM	
84	773	1298	+3.7 36%	+53 28%	+97 22%	+21 20%	+48	9

• Act. WW Oct. 3/09: 874 lbs.

28 BROOKMORE NET WORTH 152W

MALE JVJ 152W 1513971 FEBRUARY 08 2009

S A V 8180 TRAVELER 004 NHF AMF
S A V NET WORTH 4200 NHF AMF 1309743
S A V MAY 2410

SITZ TRAVELER 8180 NHF AMF
BOYD FOREVER LADY 8003
S A F 598 BANDO 5175 AMF
S A V MAY 6269

CARCASS	
MAR.	4.45
BF	9.54
REA	13.29
%LMY	59.79

BON VIEW NEW DESIGN 878 NHF AMF
BROOKMORE ELBA 1N 1210797
MV F ELBA 45L

B/R NEW DESIGN 036 NHF AMF
BON VIEW GAMMER 85
G D A R ROLLS ROYCE 203
HOMESTEADER ELBA 8C

ACTUAL BW	ADJ. 205	ADJ. 365	EPDS					DAM'S AGE
			BW	WW	YW	MILK	TM	
106	743	1337	+5.4 36%	+45 27%	+87 21%	+26 19%	+49	6

• Act. WW Oct. 3/09: 843 lbs.

30 BROOKMORE NET WORTH 170W

MALE JVJ 170W 1513365 FEBRUARY 11 2009

S A V 8180 TRAVELER 004 NHF AMF
S A V NET WORTH 4200 NHF AMF 1309743
S A V MAY 2410

SITZ TRAVELER 8180 NHF AMF
BOYD FOREVER LADY 8003
S A F 598 BANDO 5175 AMF
S A V MAY 6269

CARCASS	
MAR.	5.55
BF	8.57
REA	13.76
%LMY	61.17

MV F PERFECT BLEND 32H
BROOKMORE LADY JANE 81L 1068103
BROOKMORE LADY JANE 1J

N BAR EMULATION EXT NHF AMF
MV F TIBBIE 64F
UX GRAND SLAM 12G
BROOKMORE LADY JANE 11G

ACTUAL BW	ADJ. 205	ADJ. 365	EPDS					DAM'S AGE
			BW	WW	YW	MILK	TM	
100	832	1377	+5.8 36%	+55 26%	+95 20%	+25 18%	+53	8

• Act. WW Oct. 3/09: 935 lbs.

CATTLEMAN'S CONNECTION ANGUS BULL SALE 2010



LOT 31
BROOKMORE DENSITY 67W

31 BROOKMORE DENSITY 67W

MALE JVJ 67W 1516052 JANUARY 26 2009

S A V 8180 TRAVELER 004 NHF AMF
S A V 004 DENSITY 4336 NHF AMF 1266311
S A V MAY 7238

SITZ TRAVELER 8180 NHF AMF
BOYD FOREVER LADY 8003
LEACHMAN RIGHT TIME
S A R PROSPECTOR MAY 9124

CARCASS	
MAR.	5.60
BF	8.12
REA	16.94
%LMY	64.22

TC FOREMAN 016
BROOKMORE ENCHANTRESS 16S 1321667
BROOKMORE ENCHANTRESS 26P

CONNELLY FOREFRONT NHF AMF
TC PRIDE 8067
BUSH'S GRAND DESIGN NHF AMF
BROOKMORE ENCHANTRESS 55M

ACTUAL BW	ADJ. 205	ADJ. 365	EPDS					TM	DAM'S AGE			
			BW	WW	YW	MILK						
80	782	1434	+2.5	35%	+52	26%	+95	20%	+19	18%	+45	3

• Act. WW Oct. 3/09: 890 lbs.

32 BROOKMORE DENSITY 85W

MALE JVJ 85W 1513982 JANUARY 28 2009

S A V 8180 TRAVELER 004 NHF AMF
S A V 004 DENSITY 4336 NHF AMF 1266311
S A V MAY 7238

SITZ TRAVELER 8180 NHF AMF
BOYD FOREVER LADY 8003
LEACHMAN RIGHT TIME
S A R PROSPECTOR MAY 9124

CARCASS	
MAR.	4.65
BF	9.05
REA	15.86
%LMY	62.39

MVF STOCKMAN 45H
BROOKMORE PRINCESS 58N 1186891
BROOKMORE PRINCESS 62K

TC STOCKMAN 365
DODSWOOD ENCHANTRESS MAX-90
MVF PERFECT BLEND 32H
BROOKMORE PRINCESS 106H

ACTUAL BW	ADJ. 205	ADJ. 365	EPDS					TM	DAM'S AGE			
			BW	WW	YW	MILK						
104	803	1514	+6.3	36%	+55	26%	+98	20%	+15	18%	+43	6

• Act. WW Oct. 3/09: 950 lbs.



LOT 32 - BROOKMORE DENSITY 85W

33 BROOKMORE DENSITY 87W

MALE JVJ 87W 1513746 JANUARY 29 2009

S A V 8180 TRAVELER 004 NHF AMF
S A V 004 DENSITY 4336 NHF AMF 1266311
S A V MAY 7238

SITZ TRAVELER 8180 NHF AMF
BOYD FOREVER LADY 8003
LEACHMAN RIGHT TIME
S A R PROSPECTOR MAY 9124

CARCASS	
MAR.	5.00
BF	8.59
REA	17.22
%LMY	63.96

EBON HILL STOCKMAN 55'95
BROOKMORE PRINCESS 101M 1112348
BROOKMORE PRINCESS 22B

WIWA CREEK STOCKMAN 43'93
DURNES BARDELLA 55C
MANHATTAN OF INDIAN CREEK
BROOKMORE PRINCESS 85S

ACTUAL BW	ADJ. 205	ADJ. 365	EPDS					TM	DAM'S AGE			
			BW	WW	YW	MILK						
104	781	1535	+6.9	36%	+45	26%	+78	19%	+18	18%	+41	7

• Act. WW Oct. 3/09: 920 lbs.

S A V 004 DENSITY 4336

BW: +4.4 WW: +52 YW: +97 Milk: +19 TM: +45 YG: +45

• Density combines flawless phenotype with outstanding performance

9 SONS SELL



CATTLEMAN'S CONNECTION ANGUS BULL SALE 2010



LOT 34 - BROOKMORE DENSITY 94W



LOT 39 - BROOKMORE DENSITY 186W

34 BROOKMORE DENSITY 94W

MALE JVJ 94W 1513985 JANUARY 29 2009

S A V 8180 TRAVELER 004 NHF AMF
S A V 004 DENSITY 4336 NHF AMF 1266311
S A V MAY 7238

SITZ TRAVELER 8180 NHF AMF
BOYD FOREVER LADY 8003
LEACHMAN RIGHT TIME
S A R PROSPECTOR MAY 9124

CARCASS	
MAR.	4.90
BF	10.02
REA	16.15
%LMY	61.64

PF 7215 AVENGER 0232
BROOKMORE KONA 62N 1186880
BROOKMORE KONA 189J

WK APPEAL
ALGOMA GOLDEN SUMMER T112
BROOKMORE EXTRA 99D
BROOKMORE KONA 81B

ACTUAL BW	ADJ. 205	ADJ. 365	EPDS					TM	DAM'S AGE			
			BW	WW	YW	MILK	%LMY					
88	750	1354	+4.7	36%	+46	26%	+84	20%	+18	18%	+41	6

• Act. WW Oct. 3/09: 886 lbs.

37 BROOKMORE DENSITY 149W

MALE JVJ 149W 1516048 FEBRUARY 07 2009

S A V 8180 TRAVELER 004 NHF AMF
S A V 004 DENSITY 4336 NHF AMF 1266311
S A V MAY 7238

SITZ TRAVELER 8180 NHF AMF
BOYD FOREVER LADY 8003
LEACHMAN RIGHT TIME
S A R PROSPECTOR MAY 9124

CARCASS	
MAR.	5.40
BF	9.07
REA	14.22
%LMY	61.04

MVF STOCKMAN 45H
BROOKMORE TIBBIE 285R 1293250
BROOKMORE TIBBIE 94K

TC STOCKMAN 365
DODSWOOD ENCHANTRESS MAX-90
WINDOVER MATADOR 13H
BROOKMORE TIBBIE 196H

ACTUAL BW	ADJ. 205	ADJ. 365	EPDS					TM	DAM'S AGE			
			BW	WW	YW	MILK	%LMY					
84	807	1383	+3.5	35%	+51	26%	+92	20%	+16	18%	+42	4

• Act. WW Oct. 3/09: 905 lbs.

35 BROOKMORE DENSITY 109W

MALE JVJ 109W 1513162 FEBRUARY 01 2009

S A V 8180 TRAVELER 004 NHF AMF
S A V 004 DENSITY 4336 NHF AMF 1266311
S A V MAY 7238

SITZ TRAVELER 8180 NHF AMF
BOYD FOREVER LADY 8003
LEACHMAN RIGHT TIME
S A R PROSPECTOR MAY 9124

CARCASS	
MAR.	4.75
BF	10.48
REA	13.94
%LMY	59.37

MADSEN'S JOHNNY WALKER 98F
MADSENS ELSIE 12K 1008032
BIEVER'S PRIDE 54F

HF WALK-ON 14C
ARGWEN LUCY 98D
BIEVER'S STOCKMAN 24D
BIEVER'S PRIDE 54D

ACTUAL BW	ADJ. 205	ADJ. 365	EPDS					TM	DAM'S AGE			
			BW	WW	YW	MILK	%LMY					
78	735	1378	+1.0	36%	+46	27%	+75	19%	+17	19%	+40	9

• Act. WW Oct. 3/09: 860 lbs.

38 BROOKMORE DENSITY 168W

MALE JVJ 168W 1513379 FEBRUARY 11 2009

S A V 8180 TRAVELER 004 NHF AMF
S A V 004 DENSITY 4336 NHF AMF 1266311
S A V MAY 7238

SITZ TRAVELER 8180 NHF AMF
BOYD FOREVER LADY 8003
LEACHMAN RIGHT TIME
S A R PROSPECTOR MAY 9124

CARCASS	
MAR.	5.10
BF	11.44
REA	12.52
%LMY	57.23

BROOKMORE EXTRA GOLD 155G
BROOKMORE LUCY 143L 1067977
KEMBAR LUCY 16F

EBON HILL EXTRA GOLD 31'95
BROOKMORE DAISY 117E
MVF LINEDRIVE 40Y
KEMBAR LUCY 3Y

ACTUAL BW	ADJ. 205	ADJ. 365	EPDS					TM	DAM'S AGE			
			BW	WW	YW	MILK	%LMY					
90	688	1411	+3.9	36%	+36	26%	+77	20%	+15	18%	+33	8

• Act. WW Oct. 3/09: 773 lbs.

36 BROOKMORE DENSITY 139W

MALE JVJ 139W 1513151 FEBRUARY 05 2009

S A V 8180 TRAVELER 004 NHF AMF
S A V 004 DENSITY 4336 NHF AMF 1266311
S A V MAY 7238

SITZ TRAVELER 8180 NHF AMF
BOYD FOREVER LADY 8003
LEACHMAN RIGHT TIME
S A R PROSPECTOR MAY 9124

CARCASS	
MAR.	5.10
BF	10.02
REA	14.50
%LMY	60.29

BROOKMORE TOUCHSTONE 2F
BROOKMORE LADY JANE 68H 918847
BROOKMORE LADY JANE 42D

CENTURY TOUCHSTONE 131
BROOKMORE HEROINE 56C
EARLY SUNSET EXTRA 30Z
BROOKMORE LADY JANE 44B

ACTUAL BW	ADJ. 205	ADJ. 365	EPDS					TM	DAM'S AGE			
			BW	WW	YW	MILK	%LMY					
98	824	1524	+5.5	37%	+45	27%	+79	21%	+15	19%	+38	11

• Act. WW Oct. 3/09: 916 lbs.

39 BROOKMORE DENSITY 186W

MALE JVJ 186W 1516038 FEBRUARY 17 2009

S A V 8180 TRAVELER 004 NHF AMF
S A V 004 DENSITY 4336 NHF AMF 1266311
S A V MAY 7238

SITZ TRAVELER 8180 NHF AMF
BOYD FOREVER LADY 8003
LEACHMAN RIGHT TIME
S A R PROSPECTOR MAY 9124

CARCASS	
MAR.	6.10
BF	7.62
REA	13.06
%LMY	61.57

S A F 598 BANDO 5175 AMF
BROOKMORE TIBBIE 172R 1293199
MVF TIBBIE 38H

BON VIEW BANDO 598 AMF
S A F ROYAL LASS 1002
BROOKMORE LANCER 32F
MVF TIBBIE 35A

ACTUAL BW	ADJ. 205	ADJ. 365	EPDS					TM	DAM'S AGE			
			BW	WW	YW	MILK	%LMY					
98	833	1464	+5.6	35%	+52	26%	+90	20%	+19	19%	+45	4

• Act. WW Oct. 3/09: 898 lbs.

CATTLEMAN'S CONNECTION ANGUS BULL SALE 2010



LOT 40 - BROOKMORE FINAL ANSWER 7W



LOT 42 - BROOKMORE FINAL ANSWER 57W

40 BROOKMORE FINAL ANSWER 7W

MALE JVJ 7W 1516107 JANUARY 05 2009

SITZ TRAVELER 8180 NHF AMF		G D A R TRAVELER 71 NHF AMF		CARCASS
S A V FINAL ANSWER 0035 NHF AMF 1061938		SITZ EVERELDA ENTENSE 1137		
S A V EMULOUS 8145		BON VIEW BANDO 598 AMF		
S A V 004 DENSITY 4336 NHF AMF		S A V 8180 TRAVELER 004 NHF AMF		MAR. 6.10
BROOKMORE TIBBIE 149T 1375796		S A V MAY 7238		BF 13.33
BROOKMORE TIBBIE 73K		DAVIS MILLENNIUM 7518		REA 13.58
		BROOKMORE TIBBIE 38E		%LMY 56.16

ACTUAL	ADJ.	ADJ.	EPDS					DAM'S				
BW	205	365	BW	WW	YW	MILK	TM	AGE				
64	770	1369	+0.5	35%	+58	26%	+100	20%	+18	18%	+47	2

• Act. WW Oct. 3/09: 900 lbs.

41 BROOKMORE FINAL ANSWER 23W

MALE JVJ 23W 1516112 JANUARY 10 2009

SITZ TRAVELER 8180 NHF AMF		G D A R TRAVELER 71 NHF AMF		CARCASS
S A V FINAL ANSWER 0035 NHF AMF 1061938		SITZ EVERELDA ENTENSE 1137		
S A V EMULOUS 8145		BON VIEW BANDO 598 AMF		
BUSHES GRAND DESIGN NHF AMF		BON VIEW NEW DESIGN 1407 NHF AMF		MAR. 4.75
BROOKMORE ALETA 184T 1375993		BUSHES LADY DIVIDEND 872		BF 7.62
BROOKMORE ALETA 157P		VERMILION DATELINE 7078 NHF AMF		REA 15.78
		BROOKMORE ALETA 120E		%LMY 63.78

ACTUAL	ADJ.	ADJ.	EPDS					DAM'S				
BW	205	365	BW	WW	YW	MILK	TM	AGE				
72	827	1387	-0.1	35%	+62	26%	+101	20%	+22	19%	+53	2

• Act. WW Oct. 3/09: 955 lbs.



LOT 43 - BROOKMORE FINAL ANSWER 127W

42 BROOKMORE FINAL ANSWER 57W

MALE JVJ 57W 1513970 JANUARY 24 2009

SITZ TRAVELER 8180 NHF AMF		G D A R TRAVELER 71 NHF AMF		CARCASS
S A V FINAL ANSWER 0035 NHF AMF 1061938		SITZ EVERELDA ENTENSE 1137		
S A V EMULOUS 8145		BON VIEW BANDO 598 AMF		
MVF PERFECT BLEND 32H		N BAR EMULATION EXT NHF AMF		MAR. 5.30
BROOKMORE LADY 245M 1112384		MVF TIBBIE 64F		BF 11.96
BROOKMORE LENLOCK 87C		BROOKMORE STARFIRE 25A		REA 14.43
		BROOKMORE LENLOCK 14X		%LMY 58.24

ACTUAL	ADJ.	ADJ.	EPDS					DAM'S				
BW	205	365	BW	WW	YW	MILK	TM	AGE				
80	755	1398	+0.9	36%	+49	27%	+83	21%	+17	20%	+42	7

• Act. WW Oct. 3/09: 910 lbs.

43 BROOKMORE FINAL ANSWER 127W

MALE JVJ 127W 1516105 FEBRUARY 04 2009

SITZ TRAVELER 8180 NHF AMF		G D A R TRAVELER 71 NHF AMF		CARCASS
S A V FINAL ANSWER 0035 NHF AMF 1061938		SITZ EVERELDA ENTENSE 1137		
S A V EMULOUS 8145		BON VIEW BANDO 598 AMF		
BOYD BEEF MAKER 3069 NHF AMC		C A FUTURE DIRECTION 5321 NHC AMC		MAR. 5.10
BROOKMORE KARAMA 148T AMF 1375933		BOYD FOREVER LADY 7120		BF 9.07
BROOKMORE KARAMA 167M		VIKING CRACKER JACK 153F		REA 14.13
		BROOKMORE KARAMA 99F		%LMY 60.96

ACTUAL	ADJ.	ADJ.	EPDS					DAM'S				
BW	205	365	BW	WW	YW	MILK	TM	AGE				
80	826	1447	+3.0	35%	+54	26%	+96	20%	+21	18%	+48	2

• Act. WW Oct. 3/09: 870 lbs.

44 BROOKMORE FINAL ANSWER 211W

MALE JVJ 211W 1515921 FEBRUARY 25 2009

SITZ TRAVELER 8180 NHF AMF		G D A R TRAVELER 71 NHF AMF		CARCASS
S A V FINAL ANSWER 0035 NHF AMF 1061938		SITZ EVERELDA ENTENSE 1137		
S A V EMULOUS 8145		BON VIEW BANDO 598 AMF		
PF 7215 AVENGER 0232		S A V SKY EMULOUS 2124		MAR. 4.70
BROOKMORE MAIDEN 101R 1293225		WK APPEAL		BF 8.57
BROOKMORE MAIDEN 79J		ALGOMA GOLDEN SUMMER T112		REA 13.11
		EBON HILL STOCKMAN 55'95		%LMY 60.64
		BROOKMORE MAIDEN 121B		

ACTUAL	ADJ.	ADJ.	EPDS					DAM'S				
BW	205	365	BW	WW	YW	MILK	TM	AGE				
98	734	1342	+5.3	36%	+44	26%	+80	20%	+18	19%	+40	4

• Act. WW Oct. 3/09: 763 lbs.

CATTLEMAN'S CONNECTION ANGUS BULL SALE 2010



LOT 45 - MVF FINAL ANSWER 10W

45

MVF FINAL ANSWER 10W

MALE ABA 10W 1525000 JANUARY 03 2009

SITZ TRAVELER 8180 NHF AMF
S A V FINAL ANSWER 0035 NHF AMF 1061938
 S A V EMULOUS 8145

G D A R TRAVELER 71 NHF AMF
 SITZ EVERELDA ENTENSE 1137
 BON VIEW BANDO 598 AMF
 S A V SKY EMULOUS 2124

CARCASS	
MAR.	4.65
BF	7.17
REA	12.34
%LMY	61.45

KMK ALLIANCE 6595 I87 NHF AMF
MVF TIBBIE 60T 1419803
 FREYBURN TIBBIE 10H

SITZ ALLIANCE 6595 NHF AMF
 G A R EXT 916 AMF
 G D A R EXECUTIVE 727 NHF AMF
 MVF TIBBIE 8E

ACTUAL BW	ADJ. 205	ADJ. 365	EPDS					TM	DAM'S AGE			
			BW	WW	YW	MILK						
86	855	1383	+1.4	33%	+56	25%	+99	19%	+18	19%	+46	2

- Act. WW Oct. 23/09: 1032 lbs.
- Easy fleshing, soft made Final Answer son
- Very well balanced EPDs
- Recommended for heifers



LOT 44 - BROOKMORE FINAL ANSWER 211W

S A V FINAL ANSWER 0035

BW: -1.0 WW: +61 YW: +105 Milk: +20 TM: +51 YG: +45

- Final Answer has established himself as one of the breed's elite
- His combination of low BW and high growth to a year is only topped by his easy fleshing daughters that survive and thrive in any environment

8 SONS SELL



LOT 46 - MVF FINAL ANSWER 29W

46

MVF FINAL ANSWER 29W

MALE ABA 29W 1530283 JANUARY 15 2009

SITZ TRAVELER 8180 NHF AMF
S A V FINAL ANSWER 0035 NHF AMF 1061938
 S A V EMULOUS 8145

G D A R TRAVELER 71 NHF AMF
 SITZ EVERELDA ENTENSE 1137
 BON VIEW BANDO 598 AMF
 S A V SKY EMULOUS 2124

CARCASS	
MAR.	5.00
BF	11.90
REA	12.75
%LMY	56.95

MVF NEW FRONTIER 14N
MVF RUBY 356S 1369029
 CAYMEN RUBY 16'02

B/R NEW FRONTIER 095 NHF AMF
 MVF TIBBIE 39E
 EBON HILL BLACK POWER 41'99
 CAYMEN RUBY 23'00

ACTUAL BW	ADJ. 205	ADJ. 365	EPDS					TM	DAM'S AGE			
			BW	WW	YW	MILK						
69	781	1320	-0.8	32%	+49	23%	+92	17%	+19	17%	+44	3

- Act. WW Oct. 23/09: 900 lbs.
- Low BW Final Answer son with tremendous performance
- Recommended for heifers

47

MVF FINAL ANSWER 54W

MALE ABA 54W 1525046 JANUARY 27 2009

SITZ TRAVELER 8180 NHF AMF
S A V FINAL ANSWER 0035 NHF AMF 1061938
 S A V EMULOUS 8145

G D A R TRAVELER 71 NHF AMF
 SITZ EVERELDA ENTENSE 1137
 BON VIEW BANDO 598 AMF
 S A V SKY EMULOUS 2124

CARCASS	
MAR.	5.50
BF	10.54
REA	12.26
%LMY	57.93

KMK ALLIANCE 6595 I87 NHF AMF
MVF TIBBIE 969T 1421210
 MVF TIBBIE 176G

SITZ ALLIANCE 6595 NHF AMF
 G A R EXT 916 AMF
 RITO 9FB3 OF 5H11 FULLBACK NHF AMF
 MVF TIBBIE 14C

ACTUAL BW	ADJ. 205	ADJ. 365	EPDS					TM	DAM'S AGE			
			BW	WW	YW	MILK						
71	789	1332	+0.0	33%	+49	25%	+87	19%	+20	19%	+45	2

- Act. WW Oct. 23/09: 872 lbs.
- Low BW recommended for heifers
- Dam is a gorgeous KMK Alliance daughter, very easy fleshing, with a perfect udder



CATTLEMAN'S CONNECTION ANGUS BULL SALE 2010



LOT 48 - BROOKMORE HERITAGE 88W



LOT 50 - BROOKMORE HERITAGE 126W

48 BROOKMORE HERITAGE 88W

MALE JVJ 88W 1514144 JANUARY 29 2009

CAR DUKE 104
S A V HERITAGE 6295 NHF AMF 1481376
S A V BLACKCAP MAY 4136

CAR TRACKER 904
C A R MISS RAINDANCER 421
S A V 8180 TRAVELER 004 NHF AMF
S A V MAY 2397

CARCASS	
MAR.	5.80
BF	12.38
REA	14.40
%LMY	57.55

SITZ ALLIANCE 6595 NHF AMF
BROOKMORE BELLE 14R 1293369
MADSEN'S BELLE 9N

SITZ TRAVELER 8180 NHF AMF
SITZ BARBARAMERE JET 2698
BJ'S KORONA 3L
BOTANY ANGUS BELLE 93H

ACTUAL BW	ADJ. 205	ADJ. 365	EPDS					DAM'S AGE				
			BW	WW	YW	MILK	TM					
98	814	1559	+5.1	35%	+61	25%	+104	12%	+25	11%	+56	4

• Act. WW Oct. 3/09: 942 lbs.

50 BROOKMORE HERITAGE 126W

MALE JVJ 126W 1513758 FEBRUARY 04 2009

CAR DUKE 104
S A V HERITAGE 6295 NHF AMF 1481376
S A V BLACKCAP MAY 4136

CAR TRACKER 904
C A R MISS RAINDANCER 421
S A V 8180 TRAVELER 004 NHF AMF
S A V MAY 2397

CARCASS	
MAR.	4.90
BF	10.49
REA	13.42
%LMY	58.93

SITZ ALLIANCE 6595 NHF AMF
BROOKMORE ALETA 160M 1135427
BROOKMORE ALETA 119K

SITZ TRAVELER 8180 NHF AMF
SITZ BARBARAMERE JET 2698
G D A R ROLLS ROYCE 203
BROOKMORE ALETA 30F

ACTUAL BW	ADJ. 205	ADJ. 365	EPDS					DAM'S AGE				
			BW	WW	YW	MILK	TM					
88	779	1489	+4.4	35%	+57	26%	+102	12%	+27	12%	+56	7

• Act. WW Oct. 3/09: 900 lbs.

49 BROOKMORE HERITAGE 89W

MALE JVJ 89W 1514026 JANUARY 29 2009

CAR DUKE 104
S A V HERITAGE 6295 NHF AMF 1481376
S A V BLACKCAP MAY 4136

CAR TRACKER 904
C A R MISS RAINDANCER 421
S A V 8180 TRAVELER 004 NHF AMF
S A V MAY 2397

CARCASS	
MAR.	4.70
BF	10.02
REA	15.33
%LMY	60.96

S A F 598 BANDO 5175 AMF
BROOKMORE ELLEN 66P 1211884
BROOKMORE ELLEN 143D

BON VIEW BANDO 598 AMF
S A F ROYAL LASS 1002
MVHF STARDOM 12A
BROOKMORE ELLEN 53U

ACTUAL BW	ADJ. 205	ADJ. 365	EPDS					DAM'S AGE				
			BW	WW	YW	MILK	TM					
106	801	1634	+7.7	35%	+57	26%	+99	13%	+26	12%	+55	5

• Act. WW Oct. 3/09: 943 lbs.

51 BROOKMORE HERITAGE 141W

MALE JVJ 141W 1513364 FEBRUARY 06 2009

CAR DUKE 104
S A V HERITAGE 6295 NHF AMF 1481376
S A V BLACKCAP MAY 4136

CAR TRACKER 904
C A R MISS RAINDANCER 421
S A V 8180 TRAVELER 004 NHF AMF
S A V MAY 2397

CARCASS	
MAR.	5.05
BF	10.97
REA	14.49
%LMY	59.31

SCOTCH CAP NHF AMF
MVF ERICETTE 62J 983681
OLE SASKALTA ERICETTE 457D

P S POWER PLAY
HOFF BAND 07 OF S C 509
JOHNSTON 2100 TRADITION 485Y
ERICETTE OLE SASKALTA 97A

ACTUAL BW	ADJ. 205	ADJ. 365	EPDS					DAM'S AGE				
			BW	WW	YW	MILK	TM					
100	885	1446	+5.5	36%	+61	27%	+103	13%	+21	13%	+52	10

• Act. WW Oct. 3/09: 1015 lbs.

S A V HERITAGE 6295

BW: +6.0 WW: +72 YW: +120 Milk: +28 TM: +64 YG: +48

- Heritage comes from the same cow family as Density and Net Worth

6 SONS SELL



CATTLEMAN'S CONNECTION ANGUS BULL SALE 2010



LOT 54 - BROOKMORE BISMARCK 40W



LOT 55 - BROOKMORE BISMARCK 121W

52

BROOKMORE HERITAGE 146W

MALE JVJ 146W 1513757 FEBRUARY 07 2009

CAR DUKE 104
S A V HERITAGE 6295 NHF AMF 1481376
S A V BLACKCAP MAY 4136

CAR TRACKER 904
C A R MISS RAINDANCER 421
S A V 8180 TRAVELER 004 NHF AMF
S A V MAY 2397

CARCASS	
MAR.	4.50
BF	9.07
REA	12.37
%LMY	59.53

BENCHMARK MAGIC MAN 007
BROOKMORE ERICETTE 135M 1112664
MVF ERICETTE 62J

EBON HILL MAGIC MAN 41'97
STRATHISLA AUTUMN ROSE 803'98
SCOTCH CAP NHF AMF
OLE SASKALTA ERICETTE 457D

ACTUAL BW	ADJ. 205	ADJ. 365	EPDS					TM	DAM'S AGE			
			BW	WW	YW	MILK	%LMY					
102	828	1508	+5.8	36%	+57	26%	+98	11%	+21	12%	+50	7

• Act. WW Oct. 3/09: 945 lbs.

54

BROOKMORE BISMARCK 40W

MALE JVJ 40W 1516133 JANUARY 19 2009

G A R GRID MAKER NHF AMF
S A V BISMARCK 5682 NHF AMF 1369591
S A V ABIGALE 0451

G D A R TRAVELER 044 NHF AMF
G A R PRECISION 2536 NHF AMC
SCHOENES FIX IT 826 NHF AMF
S A V ABIGALE 6062

CARCASS	
MAR.	4.40
BF	8.12
REA	15.80
%LMY	63.29

SITZ ALLIANCE 6595 NHF AMF
BROOKMORE HEROINE 79N 1186932
BROOKMORE HEROINE 134L

SITZ TRAVELER 8180 NHF AMF
SITZ BARBARAMERE JET 2698
EBON HILL EXTRA GOLD 31'95
BROOKMORE HEROINE 15F

ACTUAL BW	ADJ. 205	ADJ. 365	EPDS					TM	DAM'S AGE			
			BW	WW	YW	MILK	%LMY					
88	732	1505	+2.6	35%	+48	26%	+87	17%	+23	12%	+47	6

• Act. WW Oct. 3/09: 895 lbs.

53

BROOKMORE HERITAGE 174W

MALE JVJ 174W 1516045 FEBRUARY 12 2009

CAR DUKE 104
S A V HERITAGE 6295 NHF AMF 1481376
S A V BLACKCAP MAY 4136

CAR TRACKER 904
C A R MISS RAINDANCER 421
S A V 8180 TRAVELER 004 NHF AMF
S A V MAY 2397

CARCASS	
MAR.	4.40
BF	6.69
REA	14.95
%LMY	64.06

SITZ ALLIANCE 6595 NHF AMF
BROOKMORE DAISY 259R 1293275
BABA DAISY 24L

SITZ TRAVELER 8180 NHF AMF
SITZ BARBARAMERE JET 2698
MVF FULLBACK 100J
BROOKMORE DAISY 117E

ACTUAL BW	ADJ. 205	ADJ. 365	EPDS					TM	DAM'S AGE			
			BW	WW	YW	MILK	%LMY					
108	831	1592	+7.5	35%	+59	26%	+103	13%	+25	11%	+55	4

• Act. WW Oct. 3/09: 911 lbs.

55

BROOKMORE BISMARCK 121W

MALE JVJ 121W 1513735 FEBRUARY 04 2009

G A R GRID MAKER NHF AMF
S A V BISMARCK 5682 NHF AMF 1369591
S A V ABIGALE 0451

G D A R TRAVELER 044 NHF AMF
G A R PRECISION 2536 NHF AMC
SCHOENES FIX IT 826 NHF AMF
S A V ABIGALE 6062

CARCASS	
MAR.	4.45
BF	6.69
REA	14.11
%LMY	63.38

V D A R LUCYS BOY NHF AMF
BROOKMORE ALETA 49M 1112739
BROOKMORE ALETA 145K

TRAVELER 1148 G D A R
V D A R PINE DRIVE LUCY 5
WINDOVER MATADOR 13H
BROOKMORE ALETA 63H

ACTUAL BW	ADJ. 205	ADJ. 365	EPDS					TM	DAM'S AGE			
			BW	WW	YW	MILK	%LMY					
82	717	1395	+0.7	36%	+45	26%	+81	17%	+20	13%	+43	7

• Act. WW Oct. 3/09: 828 lbs.

S A V BISMARCK 5682

BW: +0.1 WW: +57 YW: +101 Milk: +25 TM: +54 YG: +44

2 SONS SELL



CATTLEMAN'S CONNECTION ANGUS BULL SALE 2010



LOT 56 - BROOKMORE FFREIGHTLINER 11W



LOT 57 - BROOKMORE FREIGHTLINER 13W

56 BROOKMORE FREIGHTLINER 11W

MALE JVJ 11W 1516122 JANUARY 06 2009

BON VIEW BANDO 598 AMF
CONNELY FREIGHTLINER NHF AMF 964749
 JOANA ERICA OF CONANGA

TEHAMA BANDO 155 NHF AMF
 BON VIEW DORA 56
 NICHOLS HEAVY DUTY X100
 JARNE ERICA OF CONANGA

S A V 004 DENSITY 4336 NHF AMF
BROOKMORE ENCHANTRESS 253T 1375803
 BROOKMORE ENCHANTRESS 139K

S A V 8180 TRAVELER 004 NHF AMF
 S A V MAY 7238
 MVF PERFECT BLEND 32H
 BROOKMORE ENCHANTRESS 96H

CARCASS	
MAR.	4.50
BF	9.54
REA	14.22
%LMY	60.55

ACTUAL BW	ADJ. 205	ADJ. 365	EPDS						DAM'S AGE			
			BW	WW	YW	MILK	TM					
82	716	1303	+3.8	35%	+46	26%	+87	20%	+17	20%	+40	2

• Act. WW Oct. 3/09: 820 lbs.

58 BROOKMORE FREIGHTLINER 93W

MALE JVJ 93W 1514085 JANUARY 29 2009

BON VIEW BANDO 598 AMF
CONNELY FREIGHTLINER NHF AMF 964749
 JOANA ERICA OF CONANGA

TEHAMA BANDO 155 NHF AMF
 BON VIEW DORA 56
 NICHOLS HEAVY DUTY X100
 JARNE ERICA OF CONANGA

SITZ ALLIANCE 6595 NHF AMF
BROOKMORE LADY JANE 192P 1212182
 BROOKMORE LADY JANE 198K

SITZ TRAVELER 8180 NHF AMF
 SITZ BARBARAMERE JET 2698
 EBON HILL STOCKMAN 55'95
 BROOKMORE LADY JANE 68W

CARCASS	
MAR.	5.50
BF	11.43
REA	13.15
%LMY	57.75

ACTUAL BW	ADJ. 205	ADJ. 365	EPDS						DAM'S AGE			
			BW	WW	YW	MILK	TM					
88	747	1317	+2.7	36%	+41	26%	+79	21%	+21	21%	+42	5

• Act. WW Oct. 3/09: 882 lbs.

57 BROOKMORE FREIGHTLINER 13W

MALE JVJ 13W 1516079 JANUARY 06 2009

BON VIEW BANDO 598 AMF
CONNELY FREIGHTLINER NHF AMF 964749
 JOANA ERICA OF CONANGA

TEHAMA BANDO 155 NHF AMF
 BON VIEW DORA 56
 NICHOLS HEAVY DUTY X100
 JARNE ERICA OF CONANGA

SITZ ALLIANCE 6595 NHF AMF
BROOKMORE TIBBIE 30T 1375998
 BROOKMORE TIBBIE 194P

SITZ TRAVELER 8180 NHF AMF
 SITZ BARBARAMERE JET 2698
 MVF STOCKMAN 45H
 BROOKMORE TIBBIE 56G

CARCASS	
MAR.	4.80
BF	10.48
REA	13.73
%LMY	59.20

ACTUAL BW	ADJ. 205	ADJ. 365	EPDS						DAM'S AGE			
			BW	WW	YW	MILK	TM					
84	797	1447	+2.5	35%	+52	26%	+94	20%	+19	20%	+45	2

• Act. WW Oct. 3/09: 925 lbs.

**BULLS SIRED BY
 ANGUS BREED LEADERS**
 For performance, maternal
 and carcass traits

CONNELY FREIGHTLINER

BW: +1.8 WW: +47 YW: +91 Milk: +18 TM: +42 YG: +44

- Freightliner is one of the greatest "Cow Makers" in the history of the Angus Breed. His daughters exhibit tremendous fertility, maternal ability and maintain body condition in any environment
- Sons are deep ribbed thick made and easy fleshing

3 SONS & 4 GRANDSONS SELL



CATTLEMAN'S CONNECTION ANGUS BULL SALE 2010



LOT 59 - MVF FREIGHTLINER 107W



LOT 62 - MVF FREIGHTLINER 186W

59 MVF FREIGHTLINER 107W

MALE ABA 107W 1524924 FEBRUARY 11 2009

CONNELY FREIGHTLINER NHF AMF
MVF FREIGHTLINER 630T 1423573
MVF ELLEN 26N

BON VIEW BANDO 598 AMF
JOANA ERICA OF CONANGA
GDAR SVF TRAVELER 234D NHF AMF
MVF ELLEN 111J

CARCASS	
MAR.	4.80
BF	5.71
REA	15.10
%LMY	65.18

WESTERN WIDESPREAD 1L
MVF TIBBIE 361R 1304729
MVF TIBBIE 223M

WHITSTONE WIDESPREAD MB NHF AMF
BDM BLUE LADY ERICA 126'95
MVF FULLBACK 127J
MVF TIBBIE 192H

ACTUAL BW	ADJ. 205	ADJ. 365	EPDS					TM	DAM'S AGE			
			BW	WW	YW	MILK						
87	876	1579	+3.6	31%	+59	20%	+96	9%	+21	10%	+51	4

- Act. WW Oct. 23/09: 966 lbs.
- Sired by the bull co-owned with Sharon Wagner, Moose Jaw, SK
- MVF Freightliner 630T has bred very well in both herds

61 MVF FREIGHTLINER 160W

MALE ABA 160W 1525002 FEBRUARY 22 2009

CONNELY FREIGHTLINER NHF AMF
MVF FREIGHTLINER 630T 1423573
MVF ELLEN 26N

BON VIEW BANDO 598 AMF
JOANA ERICA OF CONANGA
GDAR SVF TRAVELER 234D NHF AMF
MVF ELLEN 111J

CARCASS	
MAR.	4.80
BF	9.05
REA	12.69
%LMY	59.81

CURRIE NEW DAY 6P
WILBAR PRIDE DOLLY 453S 1312307
PSF PRIDE DOLLY 22L

BOYD NEW DAY 8005 NHF AMF
CURRIE MIGNONNE 4J
WIWA CREEK STOCKMAN 26'97
ROYAL PRIDE DOLLY 68E

ACTUAL BW	ADJ. 205	ADJ. 365	EPDS					TM	DAM'S AGE			
			BW	WW	YW	MILK						
91	864	1447	+5.2	32%	+52	20%	+89	8%	+20	9%	+46	3

- Act. WW Oct. 23/09: 912 lbs.

60 MVF FREIGHTLINER 152W

MALE ABA 152W 1524825 FEBRUARY 21 2009

CONNELY FREIGHTLINER NHF AMF
MVF FREIGHTLINER 630T 1423573
MVF ELLEN 26N

BON VIEW BANDO 598 AMF
JOANA ERICA OF CONANGA
GDAR SVF TRAVELER 234D NHF AMF
MVF ELLEN 111J

CARCASS	
MAR.	4.70
BF	5.75
REA	12.05
%LMY	62.67

CONNELY DATELINE
BROOKMORE MISS EVA 35J 976627
BROOKMORE MISS EVA 111G

D H D TRAVELER 6807 NHF AMF
EILA EILA OF CONANGA AMF
EARLY SUNSET EXTRA 56B
BROOKMORE MISS EVA 91D

ACTUAL BW	ADJ. 205	ADJ. 365	EPDS					TM	DAM'S AGE			
			BW	WW	YW	MILK						
89	787	1346	+3.9	33%	+49	22%	+85	12%	+16	13%	+41	10

- Act. WW Oct. 23/09: 872 lbs.
- A maternal brother sold at the 2007 Cattleman's Connection Bull Sale to Gerard Cattle Co., Innisfail, AB for \$6,100.00
- Dam has been a never miss cow at MVF

62 MVF FREIGHTLINER 186W

MALE ABA 186W 1524934 FEBRUARY 26 2009

CONNELY FREIGHTLINER NHF AMF
MVF FREIGHTLINER 630T 1423573
MVF ELLEN 26N

BON VIEW BANDO 598 AMF
JOANA ERICA OF CONANGA
GDAR SVF TRAVELER 234D NHF AMF
MVF ELLEN 111J

CARCASS	
MAR.	4.90
BF	9.05
REA	12.74
%LMY	59.86

WESTERN WIDESPREAD 1L
MVF ZARA LISA 316R 1304713
MVF ZARA LISA 57K

WHITSTONE WIDESPREAD MB NHF AMF
BDM BLUE LADY ERICA 126'95
GRAND ISLAND ELMO
NORTHCOTE ZARA LISA

ACTUAL BW	ADJ. 205	ADJ. 365	EPDS					TM	DAM'S AGE			
			BW	WW	YW	MILK						
96	859	1481	+6.3	30%	+52	19%	+84	9%	+17	10%	+43	4

- Act. WW Oct. 23/09: 892 lbs.
- This calf has been a standout since birth

CHECK OUT OUR
SIGHT UNSEEN
PURCHASE PLAN
Your satisfaction guaranteed!

CATTLEMAN'S CONNECTION ANGUS BULL SALE 2010



LOT 63
BROOKMORE OBJECTIVE 198W



LOT 64 - BROOKMORE OBJECTIVE 164W

63 BROOKMORE OBJECTIVE 198W

MALE JVJ 198W 1515967 FEBRUARY 19 2009

S S OBJECTIVE T510 OT26 NHF AMF
QUAKER HILL OBJECTIVE 3J15 NHF AMF 1385921
QUAKER HILL QUEEN 1L4 NHF AMF

S S TRAVELER 6807 T510 NHF AMF
S S MISS RITA R011 7R8 NHF AMF
BW/QHF BLACKCAP LAD
ANKONY QUEEN Q H F R981

SITZ ALLIANCE 6595 NHF AMF
BROOKMORE LUCY 119R 1293389
BROOKMORE LUCY 61N

SITZ TRAVELER 8180 NHF AMF
SITZ BARBARAMERE JET 2698
MVF STOCKMAN 45H
KEMBAR LUCY 16F

CARCASS	
MAR.	4.60
BF	7.64
REA	14.09
%LMY	62.39

ACTUAL BW	ADJ. 205	ADJ. 365	EPDS					DAM'S AGE				
			BW	WW	YW	MILK	TM					
92	830	1431	+3.7	35%	+60	26%	+102	21%	+26	14%	+56	4

• Act. WW Oct. 3/09: 888 lbs.

64 BROOKMORE OBJECTIVE 164W

MALE JVJ 164W 1513979 FEBRUARY 10 2009

S S OBJECTIVE T510 OT26 NHF AMF
QUAKER HILL OBJECTIVE 3J15 NHF AMF 1385921
QUAKER HILL QUEEN 1L4 NHF AMF

S S TRAVELER 6807 T510 NHF AMF
S S MISS RITA R011 7R8 NHF AMF
BW/QHF BLACKCAP LAD
ANKONY QUEEN Q H F R981

BENCHMARK MAGIC MAN 007
BROOKMORE QUEEN 25N 1186886
BROOKMORE QUEEN 44K

EBON HILL MAGIC MAN 41'97
STRATHISLA AUTUMN ROSE 803'98
G D A R ROLLS ROYCE 203
KDR QUEEN 1505

CARCASS	
MAR.	5.05
BF	8.10
REA	13.80
%LMY	61.69

ACTUAL BW	ADJ. 205	ADJ. 365	EPDS					DAM'S AGE				
			BW	WW	YW	MILK	TM					
82	774	1477	+1.7	35%	+56	26%	+101	20%	+23	13%	+51	6

• Act. WW Oct. 3/09: 875 lbs.

65 BROOKMORE OBJECTIVE 154W

MALE JVJ 154W 1513375 FEBRUARY 09 2009

S S OBJECTIVE T510 OT26 NHF AMF
QUAKER HILL OBJECTIVE 3J15 NHF AMF 1385921
QUAKER HILL QUEEN 1L4 NHF AMF

S S TRAVELER 6807 T510 NHF AMF
S S MISS RITA R011 7R8 NHF AMF
BW/QHF BLACKCAP LAD
ANKONY QUEEN Q H F R981

ALBERDA TRAVELER 416 NHF AMF
BROOKMORE LADY JANE 137L 1067776
BROOKMORE LADY JANE 56A

D H D TRAVELER 6807 NHF AMF
ALBERDA QUEEN KIMBERLY 222
PYRAMID BACK STREET 6W
BROOKMORE LADY JANE 68W

CARCASS	
MAR.	4.90
BF	9.07
REA	16.07
%LMY	62.54

ACTUAL BW	ADJ. 205	ADJ. 365	EPDS					DAM'S AGE				
			BW	WW	YW	MILK	TM					
100	783	1484	+5.6	36%	+54	27%	+93	22%	+26	16%	+53	8

• Act. WW Oct. 3/09: 886 lbs.

66 BROOKMORE OBJECTIVE 101W

MALE JVJ 101W 1514077 JANUARY 31 2009

S S OBJECTIVE T510 OT26 NHF AMF
QUAKER HILL OBJECTIVE 3J15 NHF AMF 1385921
QUAKER HILL QUEEN 1L4 NHF AMF

S S TRAVELER 6807 T510 NHF AMF
S S MISS RITA R011 7R8 NHF AMF
BW/QHF BLACKCAP LAD
ANKONY QUEEN Q H F R981

VERMILION DATELINE 7078 NHF AMF
BROOKMORE BLACKCLASS 148P 1212083
BROOKMORE BLACKCLASS 13J

CONNELLY DATELINE
VERMILION BLACKBIRD 5044
BROOKMORE LANCER 32F
BROOKMORE BLACKCLASS 59F

CARCASS	
MAR.	4.70
BF	9.52
REA	14.06
%LMY	60.44

ACTUAL BW	ADJ. 205	ADJ. 365	EPDS					DAM'S AGE				
			BW	WW	YW	MILK	TM					
86	788	1534	+3.5	36%	+63	26%	+107	21%	+24	14%	+56	5

• Act. WW Oct. 3/09: 925 lbs.

GOOD WORKING BULLS

For hard working
Canadian Cattlemen

CATTLEMAN'S CONNECTION ANGUS BULL SALE 2010

67

BROOKMORE OBJECTIVE 75W

MALE JVJ 75W 1515930 JANUARY 27 2009

S S OBJECTIVE T510 OT26 NHF AMF
 QUAKER HILL OBJECTIVE 3J15 NHF AMF 1385921
 QUAKER HILL QUEEN 1L4 NHF AMF

S S TRAVELER 6807 T510 NHF AMF
 S S MISS RITA R011 7R8 NHF AMF
 BW/QHF BLACKCAP LAD
 ANKONY QUEEN Q H F R981

CARCASS	
MAR.	5.35
BF	8.59
REA	13.35
%LMY	60.84

W C C SPECIAL DESIGN L309 NHF AMF
 BROOKMORE KARAMA 110R 1293319
 BROOKMORE KARAMA 40M

BON VIEW NEW DESIGN 878 NHF AMF
 N BAR PRIMROSE 2424
 PF 7215 AVENGER 0232
 BROOKMORE KARAMA 119F

ACTUAL BW	ADJ. 205	ADJ. 365	EPDS					TM	DAM'S AGE			
			BW	WW	YW	MILK						
88	733	1470	+4.2	35%	+57	26%	+100	21%	+28	14%	+57	4

• Act. WW Oct. 3/09: 852 lbs.



LOT 67 - BROOKMORE OBJECTIVE 75W

68

BROOKMORE OBJECTIVE 55W

MALE JVJ 55W 1516046 TW JANUARY 22 2009

S S OBJECTIVE T510 OT26 NHF AMF
 QUAKER HILL OBJECTIVE 3J15 NHF AMF 1385921
 QUAKER HILL QUEEN 1L4 NHF AMF

S S TRAVELER 6807 T510 NHF AMF
 S S MISS RITA R011 7R8 NHF AMF
 BW/QHF BLACKCAP LAD
 ANKONY QUEEN Q H F R981

CARCASS	
MAR.	5.15
BF	7.71
REA	13.82
%LMY	62.09

BROOKMORE BANDO 5175 9N
 BROOKMORE QUEEN 263R 1310476
 BROOKMORE QUEEN 42L

S A F 598 BANDO 5175 AMF
 BROOKMORE HEROINE 126H
 O G L BATTLE CRY 427 128
 KDR QUEEN 1505

ACTUAL BW	ADJ. 205	ADJ. 365	EPDS					TM	DAM'S AGE			
			BW	WW	YW	MILK						
60	701	1373	+2.7	5%	+54	5%	+93	5%	+28	5%	+55	4

• Act. WW Oct. 3/09: 835 lbs.



EPDs:

- Expected Progeny Differences are values that predict how the future progeny of an animal will perform relative to the progeny of other animals in the same breed.
- Are expressed in the units measured of that particular trait. For example, weaning weight is measured in pounds thus the weaning weight EPD is also expressed in pounds.
- Allow a fair comparison of breeding value by removing environmental bias such as climate, feed and special management.
- Are the best genetic tool available to compare animals between herds, countries and even year of birth.

EPDs . . . an important tool for a successful business

69

BROOKMORE OBJECTIVE 29W

MALE JVJ 29W 1516076 JANUARY 11 2009

S S OBJECTIVE T510 OT26 NHF AMF
 QUAKER HILL OBJECTIVE 3J15 NHF AMF 1385921
 QUAKER HILL QUEEN 1L4 NHF AMF

S S TRAVELER 6807 T510 NHF AMF
 S S MISS RITA R011 7R8 NHF AMF
 BW/QHF BLACKCAP LAD
 ANKONY QUEEN Q H F R981

CARCASS	
MAR.	4.95
BF	9.54
REA	16.34
%LMY	62.27

K C F BENNETT TOTAL NHF AMF
 BROOKMORE DAISY 18T 1376056
 BROOKMORE DAISY 212R

SITZ ALLIANCE 6595 NHF AMF
 EXT OF CONANGA 6790
 S A F 598 BANDO 5175 AMF
 BROOKMORE DAISY 209H

ACTUAL BW	ADJ. 205	ADJ. 365	EPDS					TM	DAM'S AGE			
			BW	WW	YW	MILK						
80	812	1499	+2.2	35%	+63	26%	+109	20%	+28	13%	+60	2

• Act. WW Oct. 3/09: 930 lbs.

QUAKER HILL OBJECTIVE 3J15

BW: +2.7 WW: +74 YW: +123 Milk: +32 TM: +69 YG: +40

- Objective has no equal in the Angus Sire Summary for combination of pure growth and carass excellence

7 SONS SELL



CATTLEMAN'S CONNECTION ANGUS BULL SALE 2010



LOT 70
MVF STOUT 182W



LOT 71 - MVF STOUT 200W

70 MVF STOUT 182W

MALE ABA 182W 1524935 FEBRUARY 26 2009

TC FREEDOM 104 NHF AMF
TC STOUT 407 NHF AMF 1302212
TC PRIDE 2053

CONNELLY FOREFRONT NHF AMF
T C RUBY 9095
VERMILION DATELINE 7078 NHF AMF
TC PRIDE 5045

CARCASS	
MAR.	5.30
BF	5.71
REA	11.43
%LMY	62.19

MVF VRD DATELINE 13M
MVF LADY 371R 1304751
MVF LADY 112F

VERMILION DATELINE 7078 NHF AMF
MVF ZARA LISA 24F
DALRENE EXTRA 36A
BATSCHOL LADY 2N

ACTUAL BW	ADJ. 205	ADJ. 365	EPDS					TM	DAM'S AGE			
			BW	WW	YW	MILK						
79	801	1340	+3.6	35%	+47	25%	+86	17%	+17	16%	+41	4

- Act. WW Oct. 23/09: 830 lbs.
- Exceptional thickness and top in this calf

71 MVF STOUT 200W

MALE ABA 200W 1525066 MARCH 01 2009

TC FREEDOM 104 NHF AMF
TC STOUT 407 NHF AMF 1302212
TC PRIDE 2053

CONNELLY FOREFRONT NHF AMF
T C RUBY 9095
VERMILION DATELINE 7078 NHF AMF
TC PRIDE 5045

CARCASS	
MAR.	4.85
BF	7.71
REA	12.73
%LMY	61.21

MVF STOCKMAN 79K
MVF MAYFLOWER 145N 1175205
MVF MAYFLOWER 114H

TC STOCKMAN 365
RRD TIBBIE 12E
MVS LIMITED EDITION 10E
MVF MAYFLOWER 82E

ACTUAL BW	ADJ. 205	ADJ. 365	EPDS					TM	DAM'S AGE			
			BW	WW	YW	MILK						
96	840	1455	+5.1	33%	+44	25%	+85	19%	+16	17%	+38	6

- Act. WW Oct. 23/09: 902 lbs.
- Tremendous bone and awesome hair

72 MVF STOUT 162W

MALE ABA 162W 1524869 FEBRUARY 22 2009

TC FREEDOM 104 NHF AMF
TC STOUT 407 NHF AMF 1302212
TC PRIDE 2053

CONNELLY FOREFRONT NHF AMF
T C RUBY 9095
VERMILION DATELINE 7078 NHF AMF
TC PRIDE 5045

CARCASS	
MAR.	4.00
BF	3.86
REA	14.97
%LMY	66.94

YOUNKIN TRIUMPH 4966 NHF AMF
MOHR ANGA DARLING 3L 1056291
LLB DARLING 060F

BRUSETT SPECTRUM 62
YOUNKIN ROSE 4952
MINBURN LANCER 73B
CORVALLIS DARLING 53'84

ACTUAL BW	ADJ. 205	ADJ. 365	EPDS					TM	DAM'S AGE			
			BW	WW	YW	MILK						
93	951	1400	+4.8	33%	+58	24%	+103	19%	+22	18%	+51	8

- Act. WW Oct. 23/09: 1052 lbs.
- Maternal brother is herd sire at MVF
- Another maternal brother sold at the 2005 MVF Spring Bull Sale to Circle 7 Angus, Shaunavon, SK for \$5,100.00

TC STOUT 407

BW: +4.1 WW: +57 YW: +106 Milk: +28 TM: +57 YG: +49

13 SONS SELL



CATTLEMAN'S CONNECTION ANGUS BULL SALE 2010



LOT 75 - MVF STOUT 126W

75

MVF STOUT 126W

MALE ABA 126W 1524927 FEBRUARY 15 2009

TC FREEDOM 104 NHF AMF
TC STOUT 407 NHF AMF 1302212
TC PRIDE 2053

CONNELLY FOREFRONT NHF AMF
T C RUBY 9095
VERMILION DATELINE 7078 NHF AMF
TC PRIDE 5045

CARCASS	
MAR.	4.90
BF	6.19
REA	12.76
%LMY	62.79

WESTERN WIDESPREAD 1L
MVF DOLLY 295P 1270545
DARLENE DOLLY OF N.B.A. 3K

WHITSTONE WIDESPREAD MB NHF AMF
BDM BLUE LADY ERICA 126'95
MVBL ASSET 42H
TAFIKA 75E DOLLY 67G

ACTUAL BW	ADJ. 205	ADJ. 365	EPDS					DAM'S AGE				
			BW	WW	YW	MILK	TM					
83	795	1422	+3.6	35%	+49	25%	+91	19%	+20	16%	+45	5

- Act. WW Oct. 23/09: 884 lbs.
- Tremendous thickness and hair, excellent EPDs

76

MVF STOUT 120W

MALE ABA 120W 1525059 FEBRUARY 14 2009

TC FREEDOM 104 NHF AMF
TC STOUT 407 NHF AMF 1302212
TC PRIDE 2053

CONNELLY FOREFRONT NHF AMF
T C RUBY 9095
VERMILION DATELINE 7078 NHF AMF
TC PRIDE 5045

CARCASS	
MAR.	5.05
BF	6.19
REA	12.29
%LMY	62.41

MVSB LIMITED EDITION 10E
MVF MAYFLOWER 114H 926180
MVF MAYFLOWER 82E

DALRENE EXTRA 36A
SANDY BAR ANNIE K 16C
GNS ALLIANCE 9C
OLE SASKALTA MAYFLOWER 339C

ACTUAL BW	ADJ. 205	ADJ. 365	EPDS					DAM'S AGE				
			BW	WW	YW	MILK	TM					
89	793	1424	+3.4	36%	+43	26%	+82	20%	+11	18%	+33	11

- Act. WW Oct. 23/09: 872 lbs.
- This Mayflower cow family have consistently produced the right kind of cattle that are always in demand

77

MVF STOUT 105W

MALE ABA 105W 1524921 FEBRUARY 10 2009

TC FREEDOM 104 NHF AMF
TC STOUT 407 NHF AMF 1302212
TC PRIDE 2053

CONNELLY FOREFRONT NHF AMF
T C RUBY 9095
VERMILION DATELINE 7078 NHF AMF
TC PRIDE 5045

CARCASS	
MAR.	5.00
BF	9.07
REA	13.07
%LMY	60.61

KMK ALLIANCE 6595 187 NHF AMF
MVF TIBBIE 28R 1290858
MVF TIBBIE 123M

SITZ ALLIANCE 6595 NHF AMF
G A R EXT 916 AMF
G D A UNIVERSE 726G
MVF TIBBIE 132J

ACTUAL BW	ADJ. 205	ADJ. 365	EPDS					DAM'S AGE				
			BW	WW	YW	MILK	TM					
89	771	1346	+3.4	34%	+52	25%	+100	18%	+24	17%	+50	4

- Act. WW Oct. 23/09: 872 lbs.
- Outstanding EPDs with this calf

78

MVF STOUT 103W

MALE ABA 103W 1524823 FEBRUARY 10 2009

TC FREEDOM 104 NHF AMF
TC STOUT 407 NHF AMF 1302212
TC PRIDE 2053

CONNELLY FOREFRONT NHF AMF
T C RUBY 9095
VERMILION DATELINE 7078 NHF AMF
TC PRIDE 5045

CARCASS	
MAR.	4.65
BF	3.86
REA	13.34
%LMY	65.65

MADSEN'S JOHNNY WALKER 98F
MADSEN'S MADGE WALKER 3H 933211
HAPPYVALE MADGE 83B

HF WALK-ON 14C
ARGWEN LUCY 98D
HAPPYVALE BANDY 27Z
HAPPYVALE MADGE 22Y

ACTUAL BW	ADJ. 205	ADJ. 365	EPDS					DAM'S AGE				
			BW	WW	YW	MILK	TM					
110	857	1314	+5.4	35%	+44	25%	+63	18%	+24	17%	+46	11

- Act. WW Oct. 23/09: 956 lbs.

73

MVF STOUT 154W

MALE ABA 154W 1524982 FEBRUARY 21 2009

TC FREEDOM 104 NHF AMF
TC STOUT 407 NHF AMF 1302212
TC PRIDE 2053

CONNELLY FOREFRONT NHF AMF
T C RUBY 9095
VERMILION DATELINE 7078 NHF AMF
TC PRIDE 5045

CARCASS	
MAR.	4.60
BF	4.33
REA	12.37
%LMY	64.38

BXB VENTURE SON 9P
MVF TIBBIE 174S 1346886
MVF TIBBIE 110P

V F VENTURE FORWARD NHF AMF
BXB DATELINE 50M
F A R KRUGERRAND 410H NHF AMF
MVF TIBBIE 8L

ACTUAL BW	ADJ. 205	ADJ. 365	EPDS					DAM'S AGE				
			BW	WW	YW	MILK	TM					
84	849	1364	+3.5	32%	+47	24%	+92	16%	+23	14%	+47	3

- Act. WW Oct. 23/09: 900 lbs.
- Well balanced EPDs come with this calf

74

MVF STOUT 141W

MALE ABA 141W 1524824 FEBRUARY 19 2009

TC FREEDOM 104 NHF AMF
TC STOUT 407 NHF AMF 1302212
TC PRIDE 2053

CONNELLY FOREFRONT NHF AMF
T C RUBY 9095
VERMILION DATELINE 7078 NHF AMF
TC PRIDE 5045

CARCASS	
MAR.	3.95
BF	5.37
REA	11.74
%LMY	62.80

G D A R EXECUTIVE 727 NHF AMF
FREYBURN TIBBIE 10H 937424
MVF TIBBIE 8E

P J M POWER 291
G D A R RACHEL 5115
DALRENE EXTRA 36A
MVHF TIBBIE 39B

ACTUAL BW	ADJ. 205	ADJ. 365	EPDS					DAM'S AGE				
			BW	WW	YW	MILK	TM					
99	823	1302	+6.4	36%	+49	27%	+92	19%	+22	18%	+47	11

- Act. WW Oct. 23/09: 888 lbs.
- A maternal brother sold at the 2009 Cattleman's Connection Bull Sale to Lee Leno, Tuttle, ND for \$2,500.00
- Another maternal brother sold to Westwood Land and Cattle Co., Mossomin, SK at the 2006 Cattleman's Connection Bull Sale for \$6,750.00
- Another maternal brother was the Reserve Spring Bull Calf Champion at the 2001 Edmonton Farmfair show and sold at the 2002 Cattleman's Connection Bull sale to Murray Rankin, Killarney, MB for \$6,600.00

UPDATES ONLINE

Check for current weights & scrotal measurements at
www.mountainviewfarms.ca

CATTLEMAN'S CONNECTION ANGUS BULL SALE 2010



LOT 81 - MVF STOUT 82W

81

MVF STOUT 82W

STEER ABA 82W 1524856 FEBRUARY 05 2009

TC FREEDOM 104 NHF AMF
TC STOUT 407 NHF AMF 1302212
TC PRIDE 2053

CONNELLY FOREFRONT NHF AMF
T C RUBY 9095
VERMILION DATELINE 7078 NHF AMF
TC PRIDE 5045

CARCASS	
MAR.	5.00
BF	8.12
REA	13.46
%LMY	61.39

DESSA TRAVELER 4E
MVF TIBBIE 252N 1175149
MVF TIBBIE 113G

Q A S TRAVELER 23-4 NHF AMF
DOUBLE FOUR BARBARA 38Z
G D A R EXECUTIVE 727 NHF AMF
MVF TIBBIE 20D

ACTUAL BW	ADJ. 205	ADJ. 365	EPDS					DAM'S AGE				
			BW	WW	YW	MILK	TM					
104	811	1465	+4.6	35%	+38	25%	+76	19%	+22	17%	+41	6

• Act. WW Oct. 23/09: 952 lbs.

82

MVF STOUT 60W

MALE ABA 60W 1524850 JANUARY 31 2009

TC FREEDOM 104 NHF AMF
TC STOUT 407 NHF AMF 1302212
TC PRIDE 2053

CONNELLY FOREFRONT NHF AMF
T C RUBY 9095
VERMILION DATELINE 7078 NHF AMF
TC PRIDE 5045

CARCASS	
MAR.	4.60
BF	6.19
REA	13.59
%LMY	63.46

MVF FULLBACK 127J
MVF ANNIE K 234M 1128236
REMINGTON'S ANNIE K 185D

RITO 9FB3 OF 5H11 FULLBACK NHF AMF
MVF TIBBIE 14C
SOUTHERN OX ENFORCER 19Z
DOUBLE AA ANNIE K 646'89

ACTUAL BW	ADJ. 205	ADJ. 365	EPDS					DAM'S AGE				
			BW	WW	YW	MILK	TM					
104	934	1393	+6.2	34%	+51	25%	+85	17%	+25	17%	+51	7

• Act. WW Oct. 23/09: 1120 lbs.

83

MVF LOOKOUT 21W

MALE ABA 21W 1525013 JANUARY 11 2009

O C C LEGEND 616L
B C LOOKOUT 7024 NHF AMF 1359327
GIBBET HILL MIGNONNE E37

O C C EMBLAZON 854E
O C C BLACKBIRD 632J
PAPA EQUATOR 2928 NHF AMF
GIBBET HILL MIGNONNE TR 29

CARCASS	
MAR.	4.75
BF	4.80
REA	13.35
%LMY	64.69

S A V NET WORTH 4200 NHF AMF
MVF TIBBIE 26T 1414348
MVF TIBBIE 84N

S A V 8180 TRAVELER 004 NHF AMF
S A V MAY 2410
F A R KRUGERRAND 410H NHF AMF
MVF TIBBIE 28C

ACTUAL BW	ADJ. 205	ADJ. 365	EPDS					DAM'S AGE				
			BW	WW	YW	MILK	TM					
90	854	1183	+4.6	33%	+46	25%	+87	17%	+16	13%	+39	2

• Act. WW Oct. 23/09: 1002 lbs.

• A full brother to the dam MVF TIBBIE 26T sold to Bob Duncan, Cromer, MB for \$6,500.00 at the 2009 Cattleman's Connection Bull Sale



BC LOOKOUT 7024

BW: +2.7 WW: +48 YW: +85 Milk: +13 TM: +37 YG: +36

- Selected for the strength of his powerful dam
- Lookout combines powerful muscle shape with a clean overall makeup

7 SONS SELL

CATTLEMAN'S CONNECTION ANGUS BULL SALE 2010



LOT 84 - MVF LOOKOUT 28W



LOT 85 - MVF LOOKOUT 32W

84

MVF LOOKOUT 28W

MALE ABA 28W 1525045 JANUARY 13 2009

O C C LEGEND 616L
B C LOOKOUT 7024 NHF AMF 1359327
 GIBBET HILL MIGNONNE E37

O C C EMBLAZON 854E
 O C C BLACKBIRD 632J
 PAPA EQUATOR 2928 NHF AMF
 GIBBET HILL MIGNONNE TR 29

KMK ALLIANCE 6595 I87 NHF AMF
MVF TIBBIE 980T 1421226
 MVF TIBBIE 176G

SITZ ALLIANCE 6595 NHF AMF
 G A R EXT 916 AMF
 RITO 9FB3 OF 5H11 FULLBACK NHF AMF
 MVF TIBBIE 14C

CARCASS	
MAR.	4.85
BF	6.31
REA	13.40
%LMY	63.19

ACTUAL BW	ADJ. 205	ADJ. 365	EPDS					DAM'S AGE				
			BW	WW	YW	MILK	TM					
92	908	1462	+3.7	32%	+50	24%	+84	17%	+18	13%	+43	2

- Act. WW Oct. 23/09: 1065 lbs.
- This Lookout calf has a little extra frame than most but still has that explosive thickness and top

85

MVF LOOKOUT 32W

MALE ABA 32W 1525015 JANUARY 16 2009

O C C LEGEND 616L
B C LOOKOUT 7024 NHF AMF 1359327
 GIBBET HILL MIGNONNE E37

O C C EMBLAZON 854E
 O C C BLACKBIRD 632J
 PAPA EQUATOR 2928 NHF AMF
 GIBBET HILL MIGNONNE TR 29

BOYD BEEF MAKER 3069 NHF AMC
MVF PRIDE LADY 2T 1414110
 MVF PRIDE LADY 71L

C A FUTURE DIRECTION 5321 NHC AMC
 BOYD FOREVER LADY 7120
 GDAR SVF TRAVELER 228D
 SKY WEST PRIDE LADY 45J

CARCASS	
MAR.	4.40
BF	10.00
REA	15.17
%LMY	60.86

ACTUAL BW	ADJ. 205	ADJ. 365	EPDS					DAM'S AGE				
			BW	WW	YW	MILK	TM					
91	861	1354	+4.3	34%	+47	25%	+82	17%	+17	13%	+41	2

- Act. WW Oct. 23/09: 994 lbs.
- A very well balanced calf with a lot of middle and thickness

86

MVF LOOKOUT 43W

MALE ABA 43W 1525019 JANUARY 22 2009

O C C LEGEND 616L
B C LOOKOUT 7024 NHF AMF 1359327
 GIBBET HILL MIGNONNE E37

O C C EMBLAZON 854E
 O C C BLACKBIRD 632J
 PAPA EQUATOR 2928 NHF AMF
 GIBBET HILL MIGNONNE TR 29

KMK ALLIANCE 6595 I87 NHF AMF
MVF TIBBIE 83T 1419843
 GREENBUSH TIBBIE 15L

SITZ ALLIANCE 6595 NHF AMF
 G A R EXT 916 AMF
 YOUNKIN TRIUMPH 4966 NHF AMF
 GREENBUSH TIBBIE 23F

CARCASS	
MAR.	5.10
BF	9.60
REA	12.80
%LMY	59.34

ACTUAL BW	ADJ. 205	ADJ. 365	EPDS					DAM'S AGE				
			BW	WW	YW	MILK	TM					
81	810	1354	+3.0	5%	+51	5%	+83	5%	+15	5%	+40	2

- Act. WW Oct. 23/09: 910 lbs.
- Very thick and stout

87

MVF LOOKOUT 45W

MALE ABA 45W 1524996 JANUARY 23 2009

O C C LEGEND 616L
B C LOOKOUT 7024 NHF AMF 1359327
 GIBBET HILL MIGNONNE E37

O C C EMBLAZON 854E
 O C C BLACKBIRD 632J
 PAPA EQUATOR 2928 NHF AMF
 GIBBET HILL MIGNONNE TR 29

MVF FOCUS 2P
MVF BELLE 378S 1365636
 MVF BELLE 111P

S A F FOCUS OF E R NHF AMF
 MVF BARANDA 2K
 F A R KRUGERRAND 410H NHF AMF
 KENOSEE PARK BELLE 41D

CARCASS	
MAR.	5.60
BF	13.93
REA	14.88
%LMY	56.60

ACTUAL BW	ADJ. 205	ADJ. 365	EPDS					DAM'S AGE				
			BW	WW	YW	MILK	TM					
85	820	1335	+2.9	31%	+45	22%	+78	14%	+12	11%	+35	3

- Act. WW Oct. 23/09: 920 lbs.
- Exceptional top and thickness with this calf

88

MVF LOOKOUT 50W

MALE ABA 50W 1525020 JANUARY 26 2009

O C C LEGEND 616L
B C LOOKOUT 7024 NHF AMF 1359327
 GIBBET HILL MIGNONNE E37

O C C EMBLAZON 854E
 O C C BLACKBIRD 632J
 PAPA EQUATOR 2928 NHF AMF
 GIBBET HILL MIGNONNE TR 29

WESTERN WIDESPREAD 1L
MVF ANTAEUS JEAN 56T 1419809
 MVF ANTAEUS JEAN 162H

WHITSTONE WIDESPREAD MB NHF AMF
 BDM BLUE LADY ERICA 126'95
 BROOKMORE LANCER 32F
 WOODCREST'S ANTAEUS JEAN

CARCASS	
MAR.	5.05
BF	8.12
REA	12.73
%LMY	60.80

ACTUAL BW	ADJ. 205	ADJ. 365	EPDS					DAM'S AGE				
			BW	WW	YW	MILK	TM					
84	807	1339	+3.7	34%	+42	25%	+72	16%	+13	13%	+34	2

- Act. WW Oct. 23/09: 894 lbs.

OUR CUSTOMERS
 COME FIRST
 All bulls are fully guaranteed

CATTLEMAN'S CONNECTION ANGUS BULL SALE 2010



LOT 89 - MVF LOOKOUT 56W

89

MVF LOOKOUT 56W

MALE ABA 56W 1525021 JANUARY 30 2009

O C C LEGEND 616L
B C LOOKOUT 7024 NHF AMF 1359327
 GIBBET HILL MIGNONNE E37

BOYD BEEF MAKER 3069 NHF AMC
MVF KEEPSAKE 27T 1419795
 MVF KEEPSAKE 88G

O C C EMBLAZON 854E
 O C C BLACKBIRD 632J
 PAPA EQUATOR 2928 NHF AMF
 GIBBET HILL MIGNONNE TR 29
 C A FUTURE DIRECTION 5321 NHC AMC
 BOYD FOREVER LADY 7120
 MVSB LIMITED EDITION 10E
 MISS SHAUN OF DOUBLE H 34X

CARCASS	
MAR.	5.60
BF	7.14
REA	13.99
%LMY	62.82

ACTUAL BW	ADJ. 205	ADJ. 365	EPDS					DAM'S AGE				
			BW	WW	YW	MILK	TM					
88	880	1394	+4.1	34%	+49	25%	+84	17%	+16	13%	+41	2

• Act. WW Oct. 23/09: 970 lbs.

LOT 90
 MVF DATELINE 36W



90

MVF DATELINE 36W

MALE ABA 36W 1525016 JANUARY 19 2009

VERMILION DATELINE 7078 NHF AMF
MVF VRD DATELINE 913P AMF 1232661
 MVF LADY DI 60K

G A R GRID MAKER NHF AMF
MVF LADY ANN 935S 1365942
 BOTANY ANGUS LADY ANN 17J

CONNELLY DATELINE
 VERMILION BLACKBIRD 5044
 MVBL LANCER 9F
 DOUBLE AA LADY DI 744'94
 G D A R TRAVELER 044 NHF AMF
 G A R PRECISION 2536 NHF AMC
 MVMW WESTERN RITO 47F
 BOTANY ANGUS LADY ANN 41G

CARCASS	
MAR.	5.85
BF	10.75
REA	16.55
%LMY	61.22

ACTUAL BW	ADJ. 205	ADJ. 365	EPDS					DAM'S AGE				
			BW	WW	YW	MILK	TM					
94	998	1576	+5.2	31%	+57	23%	+102	16%	+19	13%	+48	3

- Act. WW Oct. 23/09: 1265 lbs.
- Bull Calf Champion 2009 MB Beef Expo
- Reserve Senior Bull Calf Champion 2009 CWA
- Dam is a gorgeous Grid Maker daughter, perfect uddered, very easy fleshing, one of the very best cows at MVF
- Three full brothers to MVF Lady Ann 935S sold at the 2007 Cattleman's Connection Bull Sale for a \$4,600.00 average
- Botany Angus Lady Ann 17J was sold to Circle 7 Angus, Shanavon, SK at the 2006 MVF Production Sale
- MVF Dateline 36W has the same depth of fore rib as his sire with more muscle
- 36W has tremendous performance, excellent ultra sound data, well balanced EPDs, perfect foot in a very phenotypically complete package
- Serious beef producers take a close look here

BULL CALF CHAMPION 2009
 MANITOBA LIVESTOCK EXPO



RESERVE SENIOR BULL CALF CHAMPION AGRIBITION 2009

CATTLEMAN'S CONNECTION ANGUS BULL SALE 2010

91

MVF DATELINE 15W

MALE ABA 15W 1525043 TW JANUARY 06 2009

VERMILION DATELINE 7078 NHF AMF MVF VRD DATELINE 913P AMF 1232661 MVF LADY DI 60K	CONNEALY DATELINE VERMILION BLACKBIRD 5044 MVBL LANCER 9F DOUBLE AA LADY DI 744'94	CARCASS	
WESTERN WIDESPREAD 1L MVF TIBBIE 341R 1304708 HCA CRESENT TIBBIE BROOK	WHITESTONE WIDESPREAD MB NHF AMF BDM BLUE LADY ERICA 126'95 BROOKMORE EXTRA 145D CRESCENT CREEK TIBBIE 3A		MAR. 4.60
			BF 4.33
			REA 12.37
		%LMY 64.38	

ACTUAL BW	ADJ. 205	ADJ. 365	EPDS					TM	DAM'S AGE
			BW	WW	YW	MILK	TM		
72	744	1234	+4.8 5%	+50 5%	+83 5%	+19 5%	+44	4	

- Act. WW Oct. 23/09: 926 lbs.
- Tremendous hair and length of spine



LOT 93 - MVF DATELINE 37W

92

MVF DATELINE 24W

MALE ABA 24W 1524976 JANUARY 12 2009

VERMILION DATELINE 7078 NHF AMF MVF VRD DATELINE 913P AMF 1232661 MVF LADY DI 60K	CONNEALY DATELINE VERMILION BLACKBIRD 5044 MVBL LANCER 9F DOUBLE AA LADY DI 744'94	CARCASS	
WESTERN WIDESPREAD 1L MVF LUCY 89S 1346831 MVF LUCY 211M	WHITESTONE WIDESPREAD MB NHF AMF BDM BLUE LADY ERICA 126'95 MVF FULLBACK 127J S AND T LUCY 13X		MAR. 4.70
			BF 6.67
			REA 12.78
		%LMY 62.32	

ACTUAL BW	ADJ. 205	ADJ. 365	EPDS					TM	DAM'S AGE
			BW	WW	YW	MILK	TM		
93	854	1266	+4.9 34%	+55 24%	+92 15%	+21 12%	+49	3	

- Act. WW Oct. 23/09: 1048 lbs.
- Extremely long spined calf

94

MVF DATELINE 39W

MALE ABA 39W 1524909 JANUARY 20 2009

VERMILION DATELINE 7078 NHF AMF MVF VRD DATELINE 913P AMF 1232661 MVF LADY DI 60K	CONNEALY DATELINE VERMILION BLACKBIRD 5044 MVBL LANCER 9F DOUBLE AA LADY DI 744'94	CARCASS	
BOYD BEEF MAKER 3069 NHF AMC MVF LADY 33S 1346840 MVF LADY 11N	C A FUTURE DIRECTION 5321 NHC AMC BOYD FOREVER LADY 7120 MVF STOCKMAN 67J MVF LADY 34K		MAR. 4.70
			BF 7.14
			REA 12.71
		%LMY 61.78	

ACTUAL BW	ADJ. 205	ADJ. 365	EPDS					TM	DAM'S AGE
			BW	WW	YW	MILK	TM		
89	930	1421	+4.1 33%	+60 24%	+101 16%	+24 13%	+54	3	

- Act. WW Oct. 23/09: 1115 lbs.

93

MVF DATELINE 37W

MALE ABA 37W 1524820 JANUARY 19 2009

VERMILION DATELINE 7078 NHF AMF MVF VRD DATELINE 913P AMF 1232661 MVF LADY DI 60K	CONNEALY DATELINE VERMILION BLACKBIRD 5044 MVBL LANCER 9F DOUBLE AA LADY DI 744'94	CARCASS	
BROOKMORE EXTRA 145D HCA CRESENT TIBBIE BROOK 1038539 CRESCENT CREEK TIBBIE 3A	EARLY SUNSET EXTRA 56B BROOKMORE TIBBIE 10B ACHIEVER 873Y OF J R S CRESCENT CREEK TIBBIE 10L		MAR. 5.65
			BF 11.49
			REA 12.90
		%LMY 57.48	

ACTUAL BW	ADJ. 205	ADJ. 365	EPDS					TM	DAM'S AGE
			BW	WW	YW	MILK	TM		
98	838	1396	+4.7 33%	+46 23%	+75 15%	+18 13%	+41	9	

- Act. WW Oct. 23/09: 1048 lbs.
- Excellent hair and perfect back leg

95

MVF DATELINE 81W

MALE ABA 81W 1524855 FEBRUARY 05 2009

VERMILION DATELINE 7078 NHF AMF MVF VRD DATELINE 913P AMF 1232661 MVF LADY DI 60K	CONNEALY DATELINE VERMILION BLACKBIRD 5044 MVBL LANCER 9F DOUBLE AA LADY DI 744'94	CARCASS	
MVF STOCKMAN 67J MVF LADY 10N 1183989 MVF LADY 34K	TC STOCKMAN 365 MVF TIBBIE 14C MVBL LANCER 9F MVF LADY 604F		MAR. 4.80
			BF 9.52
			REA 13.52
		%LMY 60.00	

ACTUAL BW	ADJ. 205	ADJ. 365	EPDS					TM	DAM'S AGE
			BW	WW	YW	MILK	TM		
102	872	1457	+6.1 33%	+55 23%	+95 15%	+21 13%	+49	6	

- Act. WW Oct. 23/09: 1026 lbs.

MVF DATELINE 913P

BW: +5.2 WW: +56 YW: +95 Milk: +20 TM: +48 YG: +39

- Undefeated 2006 Champion at Farmfair National Show & Agribition
- BW: 96 lbs. WW: 995 lbs. Nov. 1/04 Adj. 365D: 1,488 lbs.
- Carcass - Mar: 6.00 BF: 7.62 REA: 13.98 %LMY: 62.32
- Adds carcass quality, hair coat, thickness, depth and performance

6 SONS SELL



CATTLEMAN'S CONNECTION ANGUS BULL SALE 2010



LOT 96 - MVF DATELINE 183W



VERMILION DATELINE 7078 - SIRE OF DATELINE 913P & 345R

96

MVF DATELINE 183W

MALE ABA 183W 1524933 FEBRUARY 26 2009

MVF VRD DATELINE 13M
MVF DATELINE 345R 1304761
MVF TIBBIE 69L

VERMILION DATELINE 7078 NHF AMF
MVF ZARA LISA 24F
TC STOCKMAN 365
GREENBUSH TIBBIE 5H

CARCASS	
MAR.	4.95
BF	9.05
REA	13.97
%LMY	60.86

FCR BANNOCKBURN 05N
CJB BURGESS 58R 1277164
CJB MISS BURGESS 62M

VERMILION DATELINE 7078 NHF AMF
RON'S ERICA 1D
O G L BATTLE CRY 427 128
DOUBLE FOUR MISS BURGESS 158G

ACTUAL BW	ADJ. 205	ADJ. 365	EPDS						DAM'S AGE			
			BW	WW	YW	MILK	TM					
81	894	1518	+2.7	33%	+52	21%	+85	10%	+18	9%	+44	4

• Act. WW Oct. 23/09: 956 lbs.

97

MVF DATELINE 197W

MALE ABA 197W 1524937 MARCH 01 2009

MVF VRD DATELINE 13M
MVF DATELINE 345R 1304761
MVF TIBBIE 69L

VERMILION DATELINE 7078 NHF AMF
MVF ZARA LISA 24F
TC STOCKMAN 365
GREENBUSH TIBBIE 5H

CARCASS	
MAR.	4.55
BF	5.71
REA	11.50
%LMY	62.25

AJC H A F TRAVELER 01L
YOUNG DALE ROSEBUD 87R 1290241
YOUNG DALE ROSEBUD 531M

SITZ TRAVELER 043
AJC HAF KIRSTEN 45J
YOUNG DALE KRUGERRAND 2H
DOUBLE J ROSEBUD 355C

ACTUAL BW	ADJ. 205	ADJ. 365	EPDS						DAM'S AGE			
			BW	WW	YW	MILK	TM					
89	826	1349	+4.5	33%	+53	22%	+88	13%	+16	9%	+43	4

• Act. WW Oct. 23/09: 870 lbs.

PLEASE JOIN
US FOR A BEEF LUNCH
AT 11:30 AM
ON SALE DAY

MVF DATELINE 345R

BW: +3.2 WW: +58 YW: +85 Milk: +18 TM: +47 YG: +27

2 SONS SELL



CATTLEMAN'S CONNECTION ANGUS BULL SALE 2010

LOT 98
BROOKMORE TOTAL 22W



LOT 100 - BROOKMORE TOTAL 27W

99

BROOKMORE TOTAL 26W

MALE JVJ 26W 1516081 JANUARY 10 2009

SITZ ALLIANCE 6595 NHF AMF
K C F BENNETT TOTAL NHF AMF 1083033
EXT OF CONANGA 6790

SITZ TRAVELER 8180 NHF AMF
SITZ BARBARAMERE JET 2698
N BAR EMULATION EXT NHF AMF
LADY ENCHANTRESS OF CONANGA

CARCASS	
MAR.	5.00
BF	9.05
REA	14.27
%LMY	61.10

S A V 004 DENSITY 4336 NHF AMF
BROOKMORE DAISY 47T 1375813
BABA DAISY 24L

S A V 8180 TRAVELER 004 NHF AMF
S A V MAY 7238
MV F FULLBACK 100J
BROOKMORE DAISY 117E

ACTUAL BW	ADJ. 205	ADJ. 365	EPDS					DAM'S AGE				
			BW	WW	YW	MILK	TM					
74	742	1423	+1.5	35%	+45	26%	+83	20%	+19	19%	+42	2

• Act. WW Oct. 3/09: 845 lbs.

100

BROOKMORE TOTAL 27W

MALE JVJ 27W 1516118 JANUARY 10 2009

SITZ ALLIANCE 6595 NHF AMF
K C F BENNETT TOTAL NHF AMF 1083033
EXT OF CONANGA 6790

SITZ TRAVELER 8180 NHF AMF
SITZ BARBARAMERE JET 2698
N BAR EMULATION EXT NHF AMF
LADY ENCHANTRESS OF CONANGA

CARCASS	
MAR.	5.30
BF	11.43
REA	13.66
%LMY	58.17

BROOKMORE DIRECTION 208R
BROOKMORE TIBBIE 242T AMF 1376025
BROOKMORE TIBBIE 63R

C A FUTURE DIRECTION 5321 NHC AMC
BROOKMORE LADY JANE 137L
S A F 598 BANDO 5175 AMF
WKJ TIBBIE 4K

ACTUAL BW	ADJ. 205	ADJ. 365	EPDS					DAM'S AGE				
			BW	WW	YW	MILK	TM					
84	772	1339	+3.5	35%	+49	25%	+87	19%	+22	17%	+47	2

• Act. WW Oct. 3/09: 881 lbs.

98

BROOKMORE TOTAL 22W

MALE JVJ 22W 1516080 JANUARY 08 2009

SITZ ALLIANCE 6595 NHF AMF
K C F BENNETT TOTAL NHF AMF 1083033
EXT OF CONANGA 6790

SITZ TRAVELER 8180 NHF AMF
SITZ BARBARAMERE JET 2698
N BAR EMULATION EXT NHF AMF
LADY ENCHANTRESS OF CONANGA

CARCASS	
MAR.	5.10
BF	16.23
REA	13.29
%LMY	52.95

B C MATRIX 4132 NHF AMF
BROOKMORE BELLA 35T 1376062
BROOKMORE BELLA 242R

O C C EMBLAZON 854E
CAF PURE PRIDE EXT 99
SITZ ALLIANCE 6595 NHF AMF
BROOKMORE BELLA 10L

ACTUAL BW	ADJ. 205	ADJ. 365	EPDS					DAM'S AGE				
			BW	WW	YW	MILK	TM					
74	780	1385	+0.6	35%	+52	26%	+90	20%	+22	19%	+48	2

• Act. WW Oct. 3/09: 900 lbs.

K C F BENNETT TOTAL

BW: +0.0 WW: +45 YW: +83 Milk: +21 TM: +44 YG: +38

- Bennet Total has emerged as one of the best sons of Alliance 6595 for combining physical, superiority, performance and carcass excellence
- Daughters are perfect in udder, structure and teat size

9 SONS SELL



CATTLEMAN'S CONNECTION ANGUS BULL SALE 2010

101

BROOKMORE TOTAL 48W

MALE JVJ 48W 1513983 JANUARY 21 2009

SITZ ALLIANCE 6595 NHF AMF
K C F BENNETT TOTAL NHF AMF 1083033
 EXT OF CONANGA 6790

SITZ TRAVELER 8180 NHF AMF
 SITZ BARBARAMERE JET 2698
 N BAR EMULATION EXT NHF AMF
 LADY ENCHANTRESS OF CONANGA

CARCASS	
MAR.	5.35
BF	7.17
REA	14.41
%LMY	63.13

S A NEUTRON 377 NHF AMF
BROOKMORE ALETA 60N 1186706
 BROOKMORE ALETA 30F

S A F NEUTRON NHF AMF
 S A QUEEN SUSAN 102
 MINERTS FORTUNE 2000 NHF AMF
 BROOKMORE ALETA 121D

ACTUAL BW	ADJ. 205	ADJ. 365	EPDS					DAM'S AGE				
			BW	WW	YW	MILK	TM					
78	751	1431	+1.3	36%	+51	27%	+95	20%	+16	21%	+42	6

• Act. WW Oct. 3/09: 915 lbs.

103

BROOKMORE TOTAL 70W

MALE JVJ 70W 1514162 JANUARY 26 2009

SITZ ALLIANCE 6595 NHF AMF
K C F BENNETT TOTAL NHF AMF 1083033
 EXT OF CONANGA 6790

SITZ TRAVELER 8180 NHF AMF
 SITZ BARBARAMERE JET 2698
 N BAR EMULATION EXT NHF AMF
 LADY ENCHANTRESS OF CONANGA

CARCASS	
MAR.	5.00
BF	9.54
REA	12.92
%LMY	59.49

MVF STOCKMAN 45H
BROOKMORE KARAMA 76R 1293169
 BROOKMORE KARAMA 130E

TC STOCKMAN 365
 DODSWOOD ENCHANTRESS MAX-90
 EARLY SUNSET EXTRA 30Z
 BROOKMORE KARAMA 70T

ACTUAL BW	ADJ. 205	ADJ. 365	EPDS					DAM'S AGE				
			BW	WW	YW	MILK	TM					
88	714	1397	+2.9	36%	+40	26%	+77	21%	+18	20%	+38	4

• Act. WW Oct. 3/09: 832 lbs.

102

BROOKMORE TOTAL 66W

MALE JVJ 66W 1514044 JANUARY 26 2009

SITZ ALLIANCE 6595 NHF AMF
K C F BENNETT TOTAL NHF AMF 1083033
 EXT OF CONANGA 6790

SITZ TRAVELER 8180 NHF AMF
 SITZ BARBARAMERE JET 2698
 N BAR EMULATION EXT NHF AMF
 LADY ENCHANTRESS OF CONANGA

CARCASS	
MAR.	4.60
BF	9.52
REA	13.40
%LMY	59.91

S A F 598 BANDO 5175 AMF
BROOKMORE RUBY 112P 1212155
 BROOKMORE RUBY 20K

BON VIEW BANDO 598 AMF
 S A F ROYAL LASS 1002
 ALBERDA TRAVELER 416 NHF AMF
 BROOKMORE RUBY 77H

ACTUAL BW	ADJ. 205	ADJ. 365	EPDS					DAM'S AGE				
			BW	WW	YW	MILK	TM					
84	765	1311	+1.3	36%	+51	27%	+96	21%	+20	21%	+46	5

• Act. WW Oct. 3/09: 915 lbs.

104

BROOKMORE TOTAL 125W

MALE JVJ 125W 1516053 FEBRUARY 04 2009

SITZ ALLIANCE 6595 NHF AMF
K C F BENNETT TOTAL NHF AMF 1083033
 EXT OF CONANGA 6790

SITZ TRAVELER 8180 NHF AMF
 SITZ BARBARAMERE JET 2698
 N BAR EMULATION EXT NHF AMF
 LADY ENCHANTRESS OF CONANGA

CARCASS	
MAR.	5.10
BF	13.35
REA	12.49
%LMY	55.25

CONNELLY FREIGHTLINER NHF AMF
BROOKMORE KARAMA 29S 1345883
 BROOKMORE KARAMA 77P

BON VIEW BANDO 598 AMF
 JOANA ERICA OF CONANGA
 VERMILION DATELINE 7078 NHF AMF
 BROOKMORE KARAMA 177L

ACTUAL BW	ADJ. 205	ADJ. 365	EPDS					DAM'S AGE				
			BW	WW	YW	MILK	TM					
78	759	1419	+0.8	35%	+47	26%	+88	20%	+19	20%	+43	3

• Act. WW Oct. 3/09: 834 lbs.

CALVING EASE
 30% of the offering
 is suitable for heifers

105

BROOKMORE TOTAL 133W

MALE JVJ 133W 1516072 FEBRUARY 05 2009

SITZ ALLIANCE 6595 NHF AMF
K C F BENNETT TOTAL NHF AMF 1083033
 EXT OF CONANGA 6790

SITZ TRAVELER 8180 NHF AMF
 SITZ BARBARAMERE JET 2698
 N BAR EMULATION EXT NHF AMF
 LADY ENCHANTRESS OF CONANGA

CARCASS	
MAR.	4.90
BF	12.40
REA	14.15
%LMY	57.58

CONNELLY FREIGHTLINER NHF AMF
BROOKMORE ERICETTE 227S 1345881
 BROOKMORE ERICETTE 10P

BON VIEW BANDO 598 AMF
 JOANA ERICA OF CONANGA
 BUSHES GRAND DESIGN NHF AMF
 BROOKMORE ERICETTE 135M

ACTUAL BW	ADJ. 205	ADJ. 365	EPDS					DAM'S AGE				
			BW	WW	YW	MILK	TM					
82	718	1395	+1.4	35%	+40	26%	+76	20%	+19	20%	+39	3

• Act. WW Oct. 3/09: 782 lbs.

106

BROOKMORE TOTAL 169W

MALE JVJ 169W 1514018 FEBRUARY 11 2009

SITZ ALLIANCE 6595 NHF AMF
K C F BENNETT TOTAL NHF AMF 1083033
 EXT OF CONANGA 6790

SITZ TRAVELER 8180 NHF AMF
 SITZ BARBARAMERE JET 2698
 N BAR EMULATION EXT NHF AMF
 LADY ENCHANTRESS OF CONANGA

CARCASS	
MAR.	4.50
BF	7.71
REA	14.89
%LMY	62.97

BUSHES GRAND DESIGN NHF AMF
BROOKMORE ENCHANTRESS 26P 1212269
 BROOKMORE ENCHANTRESS 55M

BON VIEW NEW DESIGN 1407 NHF AMF
 BUSHES LADY DIVIDEND 872
 BENCHMARK MAGIC MAN 007
 BROOKMORE ENCHANTRESS 28K

ACTUAL BW	ADJ. 205	ADJ. 365	EPDS					DAM'S AGE				
			BW	WW	YW	MILK	TM					
82	733	1383	+1.2	36%	+43	27%	+80	21%	+19	21%	+41	5

• Act. WW Oct. 3/09: 825 lbs.



LOT 106 - BROOKMORE TOTAL 169W

CATTLEMAN'S CONNECTION ANGUS BULL SALE 2010



LOT 107
BROOKMORE DYNAMITE 78W

107

BROOKMORE DYNAMITE 78W

MALE JVJ 78W 1514094 JANUARY 28 2009

BALDRIDGE KABOOM K243 KCF
MOHNEN DYNAMITE 1356 NHF AMF 1373516
MOHNEN JILT 910

JAUER 353 TRAVELER 589 27
PLEASANTA OF CONANGA 736
CLEARWATER PAF SEVILLA 1977
MOHNEN JILT 143

CARCASS	
MAR.	4.60
BF	5.71
REA	16.21
%LMY	66.08

BUSHES GRAND DESIGN NHF AMF
BROOKMORE LADY JANE 195P 1212325
BROOKMORE LADY JANE 190M

BON VIEW NEW DESIGN 1407 NHF AMF
BUSHES LADY DIVIDEND 872
MVF PERFECT BLEND 32H
BROOKMORE LADY JANE 100J

ACTUAL BW	ADJ. 205	ADJ. 365	EPDS							DAM'S AGE		
			BW	WW	YW	MILK	TM					
98	777	1579	+4.7	34%	+53	25%	+92	19%	+16	12%	+43	5

• Act. WW Oct. 3/09: 920 lbs.

108

BROOKMORE DYNAMITE 47W

MALE JVJ 47W 1514019 JANUARY 21 2009

BALDRIDGE KABOOM K243 KCF
MOHNEN DYNAMITE 1356 NHF AMF 1373516
MOHNEN JILT 910

JAUER 353 TRAVELER 589 27
PLEASANTA OF CONANGA 736
CLEARWATER PAF SEVILLA 1977
MOHNEN JILT 143

CARCASS	
MAR.	4.70
BF	9.54
REA	13.88
%LMY	60.27

SITZ ALLIANCE 6595 NHF AMF
BROOKMORE BELLA 43P 1212211
BROOKMORE BELLA 125L

SITZ TRAVELER 8180 NHF AMF
SITZ BARBARAMERE JET 2698
EBON HILL EXTRA GOLD 31'95
BROOKMORE BELLA 104G

ACTUAL BW	ADJ. 205	ADJ. 365	EPDS							DAM'S AGE		
			BW	WW	YW	MILK	TM					
72	665	1431	+1.0	35%	+46	26%	+87	20%	+14	12%	+37	5

• Act. WW Oct. 3/09: 810 lbs.

109

BROOKMORE DYNAMITE 181W

MALE JVJ 181W 1513999 FEBRUARY 14 2009

BALDRIDGE KABOOM K243 KCF
MOHNEN DYNAMITE 1356 NHF AMF 1373516
MOHNEN JILT 910

JAUER 353 TRAVELER 589 27
PLEASANTA OF CONANGA 736
CLEARWATER PAF SEVILLA 1977
MOHNEN JILT 143

CARCASS	
MAR.	4.95
BF	8.10
REA	14.00
%LMY	61.85

BUSHES GRAND DESIGN NHF AMF
BROOKMORE ALETA 9P 1212258
BROOKMORE ALETA 49M

BON VIEW NEW DESIGN 1407 NHF AMF
BUSHES LADY DIVIDEND 872
V D A R LUCYS BOY NHF AMF
BROOKMORE ALETA 145K

ACTUAL BW	ADJ. 205	ADJ. 365	EPDS							DAM'S AGE		
			BW	WW	YW	MILK	TM					
84	817	1318	+1.4	34%	+53	25%	+93	18%	+18	12%	+45	5

• Act. WW Oct. 3/09: 910 lbs.

110

BROOKMORE STRUT 157W

MALE JVJ 157W 1513773 FEBRUARY 09 2009

S A F STRATEGY 9015 NHF AMF
BUSHES STRUT 756 NHF AMF 1254556
BUSHES LADY LA BELLE 457

S A F FOCUS OF E R NHF AMF
S A F ROYAL QUEEN 5084
VERMILION DATELINE 7078 NHF AMF
BUSHES LA BELLE 518

CARCASS	
MAR.	4.70
BF	8.57
REA	16.59
%LMY	63.47

MVF PERFECT BLEND 32H
BROOKMORE PRINCESS 161M 1112613
BROOKMORE PRINCESS 104H

N BAR EMULATION EXT NHF AMF
MVF TIBBIE 64F
BROOKMORE LANCER 32F
BROOKMORE PRINCESS 76C

ACTUAL BW	ADJ. 205	ADJ. 365	EPDS							DAM'S AGE		
			BW	WW	YW	MILK	TM					
90	789	1544	+5.1	36%	+61	26%	+108	19%	+14	17%	+45	7

• Act. WW Oct. 3/09: 895 lbs.

MOHEN DYNAMITE

BW: +2.6 WW: +58 YW: +110 Milk: +14 TM: +43 YG: +53

3 SONS SELL



CATTLEMAN'S CONNECTION ANGUS BULL SALE 2010



LOT 111 - MVF FRONTIER 75W

111 MVF FRONTIER 75W

MALE ABA 75W 1530549 FEBRUARY 03 2009

LLB NEW FRONTIER 81N
NORSEMAN FRONTIER 2'07 1406726
MERIT COUNTESS 3211

B/R NEW FRONTIER 095 NHF AMF
ISLA BANK PRINCESS ANNIE 4L
CUDLOBE HOGAN 79L
MERIT COUNTESS 91K

CARCASS	
MAR.	6.15
BF	10.48
REA	14.05
%LMY	59.46

MVF STOCKMAN 67J
MVF DAISY 171M 1101675
MVF DAISY 3E

TC STOCKMAN 365
MVF TIBBIE 14C
CENTURY TOUCHSTONE 131
MVF DAISY 38C

ACTUAL BW	ADJ. 205	ADJ. 365	EPDS					DAM'S AGE				
			BW	WW	YW	MILK	TM					
98	807	1392	+3.3	33%	+43	21%	+86	11%	+14	9%	+36	7

- Act. WW Oct. 3/09: 956 lbs.
- Excellent Ultra Sound data with this bull, big ribeye and high marbling score

112 MVF FRONTIER 87W

MALE ABA 87W 1530557 FEBRUARY 06 2009

LLB NEW FRONTIER 81N
NORSEMAN FRONTIER 2'07 1406726
MERIT COUNTESS 3211

B/R NEW FRONTIER 095 NHF AMF
ISLA BANK PRINCESS ANNIE 4L
CUDLOBE HOGAN 79L
MERIT COUNTESS 91K

CARCASS	
MAR.	4.55
BF	6.90
REA	11.78
%LMY	61.26

MVF 234D TRAVELER 145M
KEMBAR ELINE 39R 1275394
KEMBAR ELINE 13L

GDAR SVF TRAVELER 234D NHF AMF
DOUBLE AA ANNIE K 691'94
V D A R LUCYS BOY NHF AMF
BROOKMORE ELINE 68J

ACTUAL BW	ADJ. 205	ADJ. 365	EPDS					DAM'S AGE				
			BW	WW	YW	MILK	TM					
90	713	1243	+4.6	32%	+37	21%	+73	10%	+14	7%	+33	4

- Act. WW Oct. 23/09: 816 lbs.

113 MVF FRONTIER 113W

MALE ABA 113W 1530546 FEBRUARY 11 2009

LLB NEW FRONTIER 81N
NORSEMAN FRONTIER 2'07 1406726
MERIT COUNTESS 3211

B/R NEW FRONTIER 095 NHF AMF
ISLA BANK PRINCESS ANNIE 4L
CUDLOBE HOGAN 79L
MERIT COUNTESS 91K

CARCASS	
MAR.	4.65
BF	4.29
REA	13.64
%LMY	65.46

MVSB LIMITED EDITION 10E
MVF KEEPSAKE 88G 894061
MISS SHAUN OF DOUBLE H 34X

DALRENE EXTRA 36A
SANDY BAR ANNIE K 16C
EARLY SUNSET TRANSFORMER 24K
BATSCHOL KEEPSAKE 86S

ACTUAL BW	ADJ. 205	ADJ. 365	EPDS					DAM'S AGE				
			BW	WW	YW	MILK	TM					
84	791	1322	+2.3	33%	+38	22%	+73	12%	+8	10%	+27	12

- Act. WW Oct. 23/09: 880 lbs.

114 MVF FRONTIER 114W

MALE ABA 114W 1530550 FEBRUARY 12 2009

LLB NEW FRONTIER 81N
NORSEMAN FRONTIER 2'07 1406726
MERIT COUNTESS 3211

B/R NEW FRONTIER 095 NHF AMF
ISLA BANK PRINCESS ANNIE 4L
CUDLOBE HOGAN 79L
MERIT COUNTESS 91K

CARCASS	
MAR.	N/A
BF	
REA	
%LMY	

SITZ ALLIANCE 6595 NHF AMF
BxB MISS ALLIANCE 242L 1124125
MVF GEORGINA 21J

SITZ TRAVELER 8180 NHF AMF
SITZ BARBARAMERE JET 2698
MVSB LIMITED EDITION 10E
MVF GEORGINA 62F

ACTUAL BW	ADJ. 205	ADJ. 365	EPDS					DAM'S AGE				
			BW	WW	YW	MILK	TM					
90	783	1325	+2.3	33%	+40	22%	+80	11%	+15	11%	+35	8

- Act. WW Oct. 23/09: 898 lbs.

115 MVF FRONTIER 128W

MALE ABA 128W 1525048 FEBRUARY 15 2009

B/R NEW FRONTIER 095 NHF AMF
MVF FRONTIER 25P 1232673
MVF FAVORITE 58L

B/R NEW DESIGN 036 NHF AMF
WHITE FENCE PRIDE H1
TC STOCKMAN 365
CAN AM FAVORITE 12G

CARCASS	
MAR.	5.50
BF	9.13
REA	13.24
%LMY	60.18

MVF VRD DATELINE 913P AMF
MVF TIBBIE 183T 1419836
MVF TIBBIE 115K

VERMILION DATELINE 7078 NHF AMF
MVF LADY DI 60K
TC STOCKMAN 365
RRD TIBBIE 12E

ACTUAL BW	ADJ. 205	ADJ. 365	EPDS					DAM'S AGE				
			BW	WW	YW	MILK	TM					
71	823	1391	+1.6	33%	+44	23%	+78	14%	+15	10%	+37	2

- Act. WW Oct. 23/09: 852 lbs.
- Low BW recommended for heifers

MVF FRONTIER 25P

BW: +1.4 WW: +36 YW: +69 Milk: +13 TM: +31 YG: +33

3 SONS SELL



NORSEMAN FRONTIER 2'07

BW: +1.5 WW: +46 YW: +93 Milk: +15 TM: +38 YG: +47

4 SONS SELL

CATTLEMAN'S CONNECTION ANGUS BULL SALE 2010



LOT 116 - MVF FRONTIER 145W

116

MVF FRONTIER 145W

MALE ABA 145W 1525030 FEBRUARY 19 2009

B/R NEW FRONTIER 095 NHF AMF
MVF FRONTIER 25P 1232673
MVF FAVORITE 58L

B/R NEW DESIGN 036 NHF AMF
WHITE FENCE PRIDE H1
TC STOCKMAN 365
CAN AM FAVORITE 12G

MVF VRD DATELINE 13M
MVF ERROLLINE 147T 1419788
MVF ERROLLINE 85F

VERMILION DATELINE 7078 NHF AMF
MVF ZARA LISA 24F
G D A R EXECUTIVE 727 NHF AMF
WINDOVER ERROLLINE 9C

CARCASS	
MAR.	5.10
BF	9.54
REA	12.09
%LMY	58.82

ACTUAL BW	ADJ. 205	ADJ. 365	EPDS					DAM'S AGE				
			BW	WW	YW	MILK	TM					
71	833	1340	+1.5	33%	+38	22%	+70	14%	+16	10%	+35	2

- Act. WW Oct. 23/09: 850 lbs.
- Low BW recommended for heifers

117

MVF FRONTIER 169W

MALE ABA 169W 1530308 FEBRUARY 24 2009

B/R NEW FRONTIER 095 NHF AMF
MVF FRONTIER 25P 1232673
MVF FAVORITE 58L

B/R NEW DESIGN 036 NHF AMF
WHITE FENCE PRIDE H1
TC STOCKMAN 365
CAN AM FAVORITE 12G

WESTERN WIDESPREAD 1L
MVF MAY 172T 1419830
CAYMEN MAY 55'00

WHITESTONE WIDESPREAD MB NHF AMF
BDM BLUE LADY ERICA 126'95
CONNELLY DATELINE
MVF MAY 80H

CARCASS	
MAR.	4.80
BF	5.71
REA	12.26
%LMY	62.87

ACTUAL BW	ADJ. 205	ADJ. 365	EPDS					DAM'S AGE				
			BW	WW	YW	MILK	TM					
79	885	1321	+3.5	34%	+50	23%	+86	14%	+17	11%	+42	2

- Act. WW Oct. 23/09: 890 lbs.
- Low BW recommended for heifers



LOT 120 - MVF GRAND DESIGN 33W



LOT 118 - MVF VOODOO 134W

118

MVF VOODOO 134W

MALE ABA 134W 1525060 FEBRUARY 17 2009

KOUPALS B&B TRAVELER 4062
WHITESTONE VOO DOO W253 1405572
WHITESTONE POLLY U249

S A V 8180 TRAVELER 004 NHF AMF
KOUPAL VOLTAGE 5016
WHITESTONE BY DESIGN P102
TRIPLE J POLLY 186

K C F BENNETT ARCHITECT M299 NHF AMF
TRIARA TIBBIE 1T 1391819
MVF TIBBIE 100R

BON VIEW NEW DESIGN 1407 NHF AMF
K C F MISS BOB K310
GDAR SVF TRAVELER 234D NHF AMF
MVF TIBBIE 22K

CARCASS	
MAR.	5.05
BF	8.59
REA	14.89
%LMY	62.06

ACTUAL BW	ADJ. 205	ADJ. 365	EPDS					DAM'S AGE				
			BW	WW	YW	MILK	TM					
90	914	1514	+3.3	30%	+48	17%	+83	8%	+26	8%	+50	2

- Act. WW Oct. 23/09: 946 lbs.
- Well balanced EPDs
- Excellent Ultra Sound data

119

MVF RETAIL PRODUCT 127W

MALE ABA 127W 1525029 FEBRUARY 15 2009

G A R RETAIL PRODUCT NHF AMF
MVF RETAIL PRODUCT 54S 1346624
MVF TIBBIE 123L

G A R PRECISION 1680 NHC AMC
G A R EXT 4927
TC STOCKMAN 365
MVF TIBBIE 179G

MVF VRD DATELINE 13M
MVF LADY 144T 1419888
MVF LADY 91N

VERMILION DATELINE 7078 NHF AMF
MVF ZARA LISA 24F
YOUNKIN TRIUMPH 4966 NHF AMF
MVF LADY 112F

CARCASS	
MAR.	4.70
BF	4.33
REA	12.79
%LMY	64.72

ACTUAL BW	ADJ. 205	ADJ. 365	EPDS					DAM'S AGE				
			BW	WW	YW	MILK	TM					
94	846	1354	+7.1	33%	+49	22%	+89	9%	+17	10%	+42	2

- Act. WW Oct. 23/09: 874 lbs.
- Sired by the top selling bull at the 2007 Cattleman's Connection Bull Sale to Northern Black Angus and Tanya Belsham, BC

120

MVF GRAND DESIGN 33W

MALE ABA 33W 1524908 JANUARY 17 2009

BON VIEW NEW DESIGN 1407 NHF AMF
BUSHES GRAND DESIGN NHF AMF 1112697
BUSHES LADY DIVIDEND 872

B/R NEW DESIGN 036 NHF AMF
BON VIEW PRIDE 664
TC DIVIDEND 963 NHF AMF
B A 714 LADY 619

MVF VRD DATELINE 13M
MVF ZARA LISA 327R 1304742
MVF ZARA LISA 54H

VERMILION DATELINE 7078 NHF AMF
MVF ZARA LISA 24F
BROOKMORE LANCER 32F
NORTHCOTE ZARA LISA

CARCASS	
MAR.	4.90
BF	7.62
REA	14.35
%LMY	62.63

ACTUAL BW	ADJ. 205	ADJ. 365	EPDS					DAM'S AGE				
			BW	WW	YW	MILK	TM					
83	833	1335	+2.6	34%	+43	25%	+71	18%	+18	19%	+40	4

- Act. WW Oct. 23/09: 1003
- Moderate BW bull

CATTLEMAN'S CONNECTION ANGUS BULL SALE 2010

SALE INDEX

LOT	TATTOO	LOT	TATTOO	LOT	TATTOO
1	ABA 85W	41	JVJ 23W	81	ABA 82W
2	ABA 46W	42	JVJ 57W	82	ABA 60W
3	ABA 48W	43	JVJ 127W	83	ABA 21W
4	ABA 59W	44	JVJ 211W	84	ABA 28W
5	ABA 70W	45	ABA 10W	85	ABA 32W
6	ABA 76W	46	ABA 29W	86	ABA 43W
7	ABA 78W	47	ABA 54W	87	ABA 45W
8	ABA 79W	48	JVJ 88W	88	ABA 50W
9	ABA 92W	49	JVJ 89W	89	ABA 56W
10	ABA 42W	50	JVJ 126W	90	ABA 36W
11	ABA 38W	51	JVJ 141W	91	ABA 15W
12	ABA 25W	52	JVJ 146W	92	ABA 24W
13	ABA 17W	53	JVJ 174W	93	ABA 37W
14	ABA 137W	54	JVJ 40W	94	ABA 39W
15	ABA 171W	55	JVJ 121W	95	ABA 81W
16	JVJ 58W	56	JVJ 11W	96	ABA 183W
17	JVJ 60W	57	JVJ 13W	97	ABA 197W
18	JVJ 65W	58	JVJ 93W	98	JVJ 22W
19	JVJ 71W	59	ABA 107W	99	JVJ 26W
20	JVJ 99W	60	ABA 152W	100	JVJ 27W
21	JVJ 103W	61	ABA 160W	101	JVJ 48W
22	JVJ 107W	62	ABA 186W	102	JVJ 66W
23	JVJ 119W	63	JVJ 198W	103	JVJ 70W
24	JVJ 123W	64	JVJ 164W	104	JVJ 125W
25	JVJ 137W	65	JVJ 154W	105	JVJ 133W
26	JVJ 142W	66	JVJ 101W	106	JVJ 169W
27	JVJ 151W	67	JVJ 75W	107	JVJ 78W
28	JVJ 152W	68	JVJ 55W	108	JVJ 47W
29	JVJ 159W	69	JVJ 29W	109	JVJ 181W
30	JVJ 170W	70	ABA 182W	110	JVJ 157W
31	JVJ 67W	71	ABA 200W	111	ABA 75W
32	JVJ 85W	72	ABA 162W	112	ABA 87W
33	JVJ 87W	73	ABA 154W	113	ABA 113W
34	JVJ 94W	74	ABA 141W	114	ABA 114W
35	JVJ 109W	75	ABA 126W	115	ABA 128W
36	JVJ 139W	76	ABA 120W	116	ABA 145W
37	JVJ 149W	77	ABA 105W	117	ABA 169W
38	JVJ 168W	78	ABA 103W	118	ABA 134W
39	JVJ 186W	79	ABA 94W	119	ABA 127W
40	JVJ 7W	80	ABA 91W	120	ABA 33W

NOTES

GENERAL INFORMATION

CATTLE INSPECTION: All carry permanent identity tags, corresponding to Sale Lot Numbers. All shall be available for inspection prior to sale.

HEALTH STATUS: The bulls offered for the sale have been vaccinated for IBR, PI-3, BRSV, 8 WAY BLACK LEG, HEAMOPHILUS, SOMNUS AND PASTEURELLA HAEMOLYTICA. All were treated for internal and external parasites.

ALL CATTLE ARE SOLD: Subject to such tests as required for export under regulations of the Health of Animals Branch, Department of Agriculture for Canada - those corresponding to Bureau of Animal Industry requirements.

BREEDING GUARANTEE: All cattle are sound and right, and all with a responsible breeder guarantee of satisfaction. In the event of any unlikely dispute, the regular terms and conditions, standard with the Canadian Aberdeen Angus Association shall apply.

HOLDING AND SHIPMENTS: Approximately one week is required for export transfers and other documents to be processed. Export animals will be held at no charge and under excellent care. Joint export shipping arrangements to attain minimum shipping cost will gladly be made if instructions to that effect are provided to clerk of the sale when settlement is made.

INTEREST: The Cattleman's Connection Consignors reserve the right to retain an interest in any of the animals selling.

INSURANCE: Ownership risk to purchaser commences when the Auctioneer's hammer falls. Livestock coverage will be available at the Clerk's desk from the appointed representatives on sale day, also from the Sales Management at any time.

TERMS OF SALE: Are cash or cheque at par, payable to Clerks of the Sale on Sale Day. U.S. Funds will be accepted at the current rate of exchange. No release will be given until satisfactory settlement has been made. We reserve the right to withhold animals from export shipment for whom payments have not been received prior to departure times.

ALL PERSONS who attend the Sale do so at their own risk, and the Owners, Sale Management and Sale Staff assume no liability, legal or otherwise, for property loss or for any accidents that may occur.

THANK YOU
for your interest
in our programs

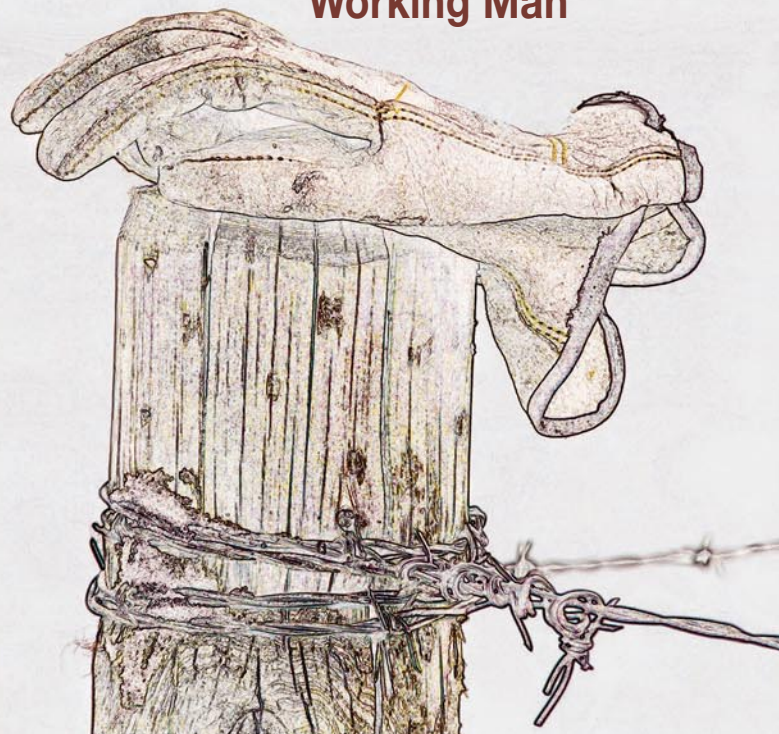
8th Annual
**MOUNTAIN VIEW FARMS
SPRING BULL SALE**
April 16, 2010, Virden, Manitoba
Catalogue online at
www.MountainViewFarms.ca

MOUNTAIN VIEW FARMS
COMP 3 RR #2
SWAN RIVER, MANITOBA R0L 1Z0



15th Annual
**CATTLEMAN'S
CONNECTION**
**Black Angus
Bull Sale**

**Bulls for the
Working Man**



Friday, March 5, 2010