

20th Anniversary

CATTLEMAN'S CONNECTION

Bull Sale

Friday, March 6, 2015

**Heartland Livestock
Brandon, Manitoba**



Grant Rolston

Welcome

20TH ANNIVERSARY CATTLEMAN'S CONNECTION

BROOKMORE =ANGUS=

Jack & Barb Hart
BROOKDALE, MANITOBA R0K 0G0
(204) 476-2607 Cell: (204) 476-6696
email: brookmoreangus@gmail.com

This year we celebrate the 20th Anniversary of the Cattleman's Connection Bull Sale. There have been a few changes over the years, but our goal remains the same, to raise Black Angus bulls for both the purebred and commercial breeder. It has been our pleasure to serve you over these past years. We'd like to welcome back to the sale, HBH Farms Inc. and Airey Cattle Co.

We are confident that as you look through our offering of bulls you will find something to suit the needs of your cattle operation, whether it be for calving ease bulls for your heifers or for performance bulls to use on your cows. The sires of the bulls on offer have been selected for calving ease, performance and carcass traits. There will be scrotal measurements and weights available sale day. Semen evaluation and carcass evaluation by ultra sound will be done prior to sale day.

These bulls sell with our personal guarantee for soundness and fertility, as well as complete satisfaction to our customers. We will bring your purchases back to the farm after the sale for pickup or delivery at a later date, but we do recommend that if your purchases are returning to our farm that you place insurance on them. We will have an insurance representative at the sale to help you with that.

Bulls are available for viewing any time on the farm prior to the sale and the coffee is always on. We'd love to have you check them out before hand. They will be moved to Brandon and can be viewed March 5 at Heartland.

If we can be of any assistance in helping you to choose the right bull for your farming operation please feel free to give us or any of our capable sales staff a call. We hope you enjoy looking through our catalog, we feel that our bulls speak for themselves. We look forward to visiting with you on or before sale day. You are invited to join us for lunch at 11:30 prior to the sale.

Thank you for your support.

As always,
Jack & Barb

**CATTLEMAN'S
CONNECTION**

*Brookmore Angus
weaning weights taken
October 4, 2014*

Sale live online at DLMS.ca
see page 13 for details

★★ Please Note ★★
**ALL BULLS
GOING BACK TO THE FARM
MUST BE INSURED**



Jack & Barb

DjH

Welcome to the Cattleman's Connection Bull Sale

It is amazing how fast twenty years go by, it is also amazing how many outstanding bulls have sold in this sale in the past twenty years. The good news is that this is one of the very strongest group of bulls ever offered with twenty-one sires being represented, fifteen of which are the nations top A.I. sires.

The Harts are pleased to be again working with HBH Farms, manager Barb Airey and Airey Cattle Co., Barb and Ray Airey.

Come expecting to find moderate birth weight bulls with explosive growth, muscle shape, volume and style with strong maternal traits. The Brookmore, HBH and Airey programs are based on customer satisfaction; these are bulls that can improve both commercial and purebred programs. As in the past there are a large number of these bulls whose birth weights and birth EPDs would indicate they could be used on heifers but still with the performance to do a top job on cows.

Come early and study this great set of young bulls, and I am confident you will be impressed. If you can't make the sale give us a call to discuss your herd sire needs, "Our Sight Unseen Purchase Plan" is available with satisfaction guaranteed.

If Jack and Barb, Ray and Barb, John Lamport any of the sale crew or myself can be of assistance in any way please give us a call.

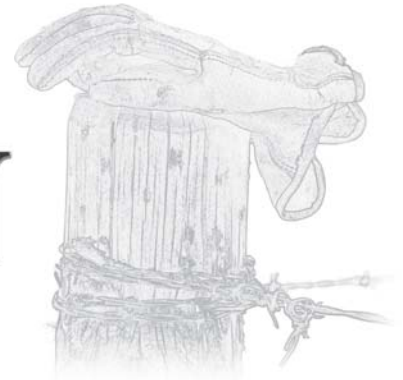
Yours truly,
Doug Henderson

Douglas J. Henderson & Associates Ltd.
P.O. Box 5900, Lacombe, Alberta T4L 1X4 Doug & Linda Henderson
Phone: (403) 782-3888 Fax: (403) 782-3849 Cell: (403) 350-8541

20th Anniversary

CATTLEMAN'S CONNECTION

BLACK ANGUS BULL SALE
FRIDAY, MARCH 6, 2015 - 1:00 P.M.



HEARTLAND LIVESTOCK YARDS, BRANDON, MANITOBA

STORM DATE: March 9, 2015 - listen to 880 CKLQ Radio for storm date information

SALE HEADQUARTERS: Lakeview Inn & Suites
1880 18th Street North, Brandon, Manitoba - (204) 728-1880

Selling: **133 YEARLING & 1 TWO YEAR OLD
BLACK ANGUS BULLS** (All Guaranteed Breeders)

SALE DAY PHONE: 204-727-1431



- **WE STAND BEHIND WHAT WE SELL** - all bulls will be semen tested & breeding soundness evaluated
- **SIGHT UNSEEN PURCHASE PLAN** - your satisfaction guaranteed
- **WINTERING POLICY** - free board on bulls until April 1, 2015
- **POUNDS** - generations of bred on muscle, without sacrificing maternal traits
- **CALVING EASE** - 40% of the bulls selling are suitable for heifers
- **ALL BULLS** - carcass evaluated through ultrasound

AUCTIONEER: Brent Carey
403-549-2478 Cell: 403-650-9028

RINGMEN:

Mark Stock - 306-678-4811 Cell: 306-357-8104
Scott Johnstone - 306-631-0767

BUYERS REP:

John Lampert 204-841-4136
Brody Gardner Cell: 403-994-0552
Keith Cleaver 204-727-1431 Cell: 204-761-0668
Jim Nugent 204-841-0113
Arthur Eddy - US 721-754-2526 Cell: 712-330-5791



BROOKMORE PHOTOGRAPHER
Grant Rolston Photography Ltd.
403-593-2217

Join us for lunch at 11:30 am

LIVESTOCK INSURANCE - Available Sale Day

Sale Manager:
**DjH Douglas J. Henderson
& Associates Ltd.**

P.O. Box 5900, Lacombe, Alberta T4L 1X4
Doug & Linda Henderson
Phone: (403) 782-3888 Fax: (403) 782-3849 Cell: (403) 350-8541
Brody Gardner Cell: 403-994-0552
email: djhenderson@platinum.ca www.hendersoncattle.com

**BROOKMORE
=ANGUS=**

Jack & Barb Hart

BROOKDALE, MANITOBA R0K 0G0
(204) 476-2607 Cell: (204) 476-6696
email: brookmoreangus@gmail.com



Barb Airey, Mgr.

AIREY CATTLE CO.
Barb & Ray Airey

BOX 922, RIVERS, MANITOBA R0K 1X0 (204) 566-2134
Barb Cell: (204) 761-1851 Ray Cell: (204) 724-3600
email: rbairay@hotmail.com



LOT 1
BROOKMORE
UPWARD
115B

1

BROOKMORE UPWARD 115B

MALE JVJ 115B 1800578 FEBRUARY 08 2014

CONNEALY ONWARD DMF AMF CAF NHF DDF
SITZ UPWARD 307R DMF AMF CAF NHF DDF 1385926
SITZ HENRIETTA PRIDE 81M

S A V 004 DENSITY 4336 AMF CAF NHF DDF
BROOKMORE TIBBIE 207T 1375877
BROOKMORE TIBBIE 57M

CONNEALY LEAD ON DMF AMF CAF NHF DDF
ALTUNE OF CONANGA 6104
SITZ VALUE 7097 AMF CAF NHF DDF
SITZ HENRIETTA PRIDE 1370

S A V 8180 TRAVELER 004 DMF DWF AMF CAF NHF OSF DDF
S A V MAY 7238 CAF DDF
A A R REALLY WINDY 1205 AMF CAF NHF DDF
BROOKMORE TIBBIE 73K

| CARCASS | |
|---------|-------|
| MARB | 6.30 |
| BF | 7.17 |
| REA | 13.28 |
| %LMY | 62.21 |

| ACT. BW | ACT. WW | ADJ. 205 | ADJ. 365 | EPDS | | | | | | | | |
|---------|---------|----------|----------|------|-----|-----|------|------|-----|-----|-----|-----|
| | | | | BW | WW | YW | MILK | TM | | | | |
| 88 | 746 | 655 | 1413 | +3.4 | 38% | +53 | 29% | +103 | 24% | +27 | 23% | +54 |



LOT 2 - BROOKMORE UPWARD 67B

2

BROOKMORE UPWARD 67B

MALE JVJ 67B 1800707 JANUARY 28 2014

CONNEALY ONWARD DMF AMF CAF NHF DDF
SITZ UPWARD 307R DMF AMF CAF NHF DDF 1385926
SITZ HENRIETTA PRIDE 81M

S A V NET WORTH 4200 AMF CAF NHF DDF
BROOKMORE HEROINE 120Y 1603525
BROOKMORE HEROINE 151L

CONNEALY LEAD ON DMF AMF CAF NHF DDF
ALTUNE OF CONANGA 6104
SITZ VALUE 7097 AMF CAF NHF DDF
SITZ HENRIETTA PRIDE 1370

S A V 8180 TRAVELER 004 DMF DWF AMF CAF NHF OSF DDF
S A V MAY 2410
G D A R ROLLS ROYCE 203
BROOKMORE HEROINE 17A

| CARCASS | |
|---------|-------|
| MARB | 4.65 |
| BF | 9.05 |
| REA | 13.51 |
| %LMY | 60.48 |

| ACT. BW | ACT. WW | ADJ. 205 | ADJ. 365 | EPDS | | | | | | | | |
|---------|---------|----------|----------|------|-----|-----|------|------|-----|-----|-----|-----|
| | | | | BW | WW | YW | MILK | TM | | | | |
| 70 | 773 | 687 | 1381 | +0.8 | 37% | +57 | 29% | +109 | 24% | +31 | 22% | +60 |

SITZ UPWARD 307R

BW +2.5 WW +71 YW +132 Milk +38 TM +74 SC: +1.65

BW: 85 lbs. Adj. 205D: 902 lbs. Adj. 365D: 1395 lbs.

Sitz Upward was the #1 sire in North America for registrations in 2013. He ranks #1 in the breed for growth and maternal milk. Upward progeny are some of the most popular in the breed..

8 SONS SELL





LOT 3 - BROOKMORE UPWARD 52B



LOT 4 - BROOKMORE UPWARD 143B

3 BROOKMORE UPWARD 52B

MALE JVJ 52B 1800414 JANUARY 25 2014

CONNEALY ONWARD DMF AMF CAF NHF DDF
SITZ UPWARD 307R DMF AMF CAF NHF DDF 1385926
SITZ HENRIETTA PRIDE 81M

CONNEALY LEAD ON DMF AMF CAF NHF DDF
ALTUNE OF CONANGA 6104
SITZ VALUE 7097 AMF CAF NHF DDF
SITZ HENRIETTA PRIDE 1370

| CARCASS | |
|---------|-------|
| MARB | 5.00 |
| BF | 5.75 |
| REA | 13.22 |
| %LMY | 63.62 |

BUSHES GRAND DESIGN AMF CAF NHF DDF
BROOKMORE RUBY 19P 1212243
BROOKMORE RUBY 30M

BON VIEW NEW DESIGN 1407 AMF CAF NHF DDF
BUSHES LADY DIVIDEND 872
V D A R LUCY'S BOY AMF CAF NHF DDF
BROOKMORE RUBY 77K

| ACT. BW | ACT. WW | ADJ. 205 | ADJ. 365 | EPDS | | | | | | | | |
|---------|---------|----------|----------|------|-----|-----|------|------|-----|-----|-----|-----|
| | | | | BW | WW | YW | MILK | TM | | | | |
| 88 | 940 | 781 | 1489 | +2.5 | 38% | +66 | 30% | +108 | 25% | +30 | 23% | +63 |

6 BROOKMORE UPWARD 130B

MALE JVJ 130B 1800544 FEBRUARY 16 2014

CONNEALY ONWARD DMF AMF CAF NHF DDF
SITZ UPWARD 307R DMF AMF CAF NHF DDF 1385926
SITZ HENRIETTA PRIDE 81M

CONNEALY LEAD ON DMF AMF CAF NHF DDF
ALTUNE OF CONANGA 6104
SITZ VALUE 7097 AMF CAF NHF DDF
SITZ HENRIETTA PRIDE 1370

| CARCASS | |
|---------|-------|
| MARB | 5.70 |
| BF | 7.14 |
| REA | 12.93 |
| %LMY | 61.95 |

SITZ ALLIANCE 6595 DMF AMF CAF NHF DDF
BROOKMORE ALETA 170S 1321692
BROOKMORE ALETA 157P

SITZ TRAVELER 8180 AMF CAF NHF DDF
SITZ BARBARAMERE JET 2698
VERMILION DATELINE 7078 AMF CAF NHF DDF
BROOKMORE ALETA 120E

| ACT. BW | ACT. WW | ADJ. 205 | ADJ. 365 | EPDS | | | | | | | | |
|---------|---------|----------|----------|------|-----|-----|------|------|-----|-----|-----|-----|
| | | | | BW | WW | YW | MILK | TM | | | | |
| 92 | 771 | 697 | 1507 | +4.4 | 38% | +59 | 29% | +107 | 24% | +29 | 22% | +59 |

4 BROOKMORE UPWARD 143B

MALE JVJ 143B 1800524 FEBRUARY 22 2014

CONNEALY ONWARD DMF AMF CAF NHF DDF
SITZ UPWARD 307R DMF AMF CAF NHF DDF 1385926
SITZ HENRIETTA PRIDE 81M

CONNEALY LEAD ON DMF AMF CAF NHF DDF
ALTUNE OF CONANGA 6104
SITZ VALUE 7097 AMF CAF NHF DDF
SITZ HENRIETTA PRIDE 1370

| CARCASS | |
|---------|-------|
| MARB | 4.90 |
| BF | 6.67 |
| REA | 14.81 |
| %LMY | 63.97 |

SITZ ALLIANCE 6595 DMF AMF CAF NHF DDF
BROOKMORE BELLA 242R 1293273
BROOKMORE BELLA 10L

SITZ TRAVELER 8180 AMF CAF NHF DDF
SITZ BARBARAMERE JET 2698
BROOKMORE EXTRA GOLD 155G
BROOKMORE BELLA 119H

| ACT. BW | ACT. WW | ADJ. 205 | ADJ. 365 | EPDS | | | | | | | | |
|---------|---------|----------|----------|------|-----|-----|------|-----|-----|-----|-----|-----|
| | | | | BW | WW | YW | MILK | TM | | | | |
| 84 | 798 | 737 | 1461 | +2.4 | 38% | +54 | 30% | +95 | 25% | +30 | 23% | +57 |

7 BROOKMORE UPWARD 94B

MALE JVJ 94B 1800633 FEBRUARY 02 2014

CONNEALY ONWARD DMF AMF CAF NHF DDF
SITZ UPWARD 307R DMF AMF CAF NHF DDF 1385926
SITZ HENRIETTA PRIDE 81M

CONNEALY LEAD ON DMF AMF CAF NHF DDF
ALTUNE OF CONANGA 6104
SITZ VALUE 7097 AMF CAF NHF DDF
SITZ HENRIETTA PRIDE 1370

| CARCASS | |
|---------|-------|
| MARB | 5.10 |
| BF | 7.64 |
| REA | 11.85 |
| %LMY | 60.57 |

DUNLOUISE COMMANDER BOND AMF CAF NHF DDF
BROOKMORE HEROINE 101X 1558266
BROOKMORE HEROINE 114P

WEDDERLIE EVICTOR
CHAMPAGNE CHERRY BEE B117
BON VIEW NEW DESIGN 878 AMF CAF NHF DDF
BROOKMORE HEROINE 228M

| ACT. BW | ACT. WW | ADJ. 205 | ADJ. 365 | EPDS | | | | | | | | |
|---------|---------|----------|----------|------|-----|-----|------|-----|-----|-----|-----|-----|
| | | | | BW | WW | YW | MILK | TM | | | | |
| 84 | 805 | 706 | 1410 | +2.0 | 38% | +48 | 29% | +83 | 24% | +27 | 22% | +51 |

5 BROOKMORE UPWARD 33B

MALE JVJ 33B 1800420 JANUARY 21 2014

CONNEALY ONWARD DMF AMF CAF NHF DDF
SITZ UPWARD 307R DMF AMF CAF NHF DDF 1385926
SITZ HENRIETTA PRIDE 81M

CONNEALY LEAD ON DMF AMF CAF NHF DDF
ALTUNE OF CONANGA 6104
SITZ VALUE 7097 AMF CAF NHF DDF
SITZ HENRIETTA PRIDE 1370

| CARCASS | |
|---------|-------|
| MARB | 4.75 |
| BF | 10.02 |
| REA | 14.53 |
| %LMY | 60.32 |

S A F 598 BANDO 5175 AMF CAC DDF
BROOKMORE ELLEN 66P CAF 1211884
BROOKMORE ELLEN 143D

BON VIEW BANDO 598 AMF CAC DDF
S A F ROYAL LASS 1002
MVHF STARDOM 12A
BROOKMORE ELLEN 53U

| ACT. BW | ACT. WW | ADJ. 205 | ADJ. 365 | EPDS | | | | | | | | |
|---------|---------|----------|----------|------|-----|-----|------|------|-----|-----|-----|-----|
| | | | | BW | WW | YW | MILK | TM | | | | |
| 98 | 912 | 750 | 1626 | +5.6 | 38% | +60 | 30% | +110 | 25% | +30 | 23% | +60 |



LOT 7 - BROOKMORE UPWARD 94B



LOT 8 - BROOKMORE UPWARD 125B



LOT 9 - BROOKMORE IMPRINT 128B

8 BROOKMORE UPWARD 125B

MALE JVJ 125B 1800589 FEBRUARY 14 2014

CONNEALY ONWARD DMF AMF CAF NHF DDF
SITZ UPWARD 307R DMF AMF CAF NHF DDF 1385926
SITZ HENRIETTA PRIDE 81M

CONNEALY LEAD ON DMF AMF CAF NHF DDF
ALTUNE OF CONANGA 6104
SITZ VALUE 7097 AMF CAF NHF DDF
SITZ HENRIETTA PRIDE 1370

| CARCASS | |
|---------|-------|
| MARB | 5.00 |
| BF | 4.80 |
| REA | 14.40 |
| %LMY | 65.54 |

S A V 004 DENSITY 4336 AMF CAF NHF DDF
BROOKMORE DAISY 128U 1441309
BABA DAISY 50L

S A V 8180 TRAVELER 004 DMF DWF AMF CAF NHF OSF DDF
S A V MAY 7238 CAF DDF
MV F FULLBACK 100J
BROOKMORE DAISY 117E

| ACT. BW | ACT. WW | ADJ. 205 | ADJ. 365 | EPDS | | | | | | | | |
|---------|---------|----------|----------|------|-----|-----|------|------|-----|-----|-----|-----|
| | | | | BW | WW | YW | MILK | TM | | | | |
| 82 | 776 | 695 | 1411 | +2.9 | 38% | +57 | 29% | +105 | 24% | +28 | 22% | +57 |

10 BROOKMORE IMPRINT 75B

MALE JVJ 75B 1800649 JANUARY 30 2014

CONNEALY IMPRESSION AMF CAF NHF DDF
CONNEALY IMPRINT 8317 AMF CAF NHF 1659104
ELLINA OF CONANGA 868 7127

CONNEALY REFLECTION AMF CAF NHF DDF
PEARL PAMMY OF CONANGA 194 CAF DDF
G A R GRID MAKER AMF CAF NHF DDF
ELIGENCE PLUS OF CONANGA

| CARCASS | |
|---------|-------|
| MARB | 5.60 |
| BF | 8.12 |
| REA | 13.03 |
| %LMY | 61.04 |

S A V NET WORTH 4200 AMF CAF NHF DDF
BROOKMORE HEROINE 142X 1558179
BROOKMORE HEROINE 151L

S A V 8180 TRAVELER 004 DMF DWF AMF CAF NHF OSF DDF
S A V MAY 2410
G D A R ROLLS ROYCE 203
BROOKMORE HEROINE 17A

| ACT. BW | ACT. WW | ADJ. 205 | ADJ. 365 | EPDS | | | | | | | | |
|---------|---------|----------|----------|------|-----|-----|------|-----|-----|-----|-----|-----|
| | | | | BW | WW | YW | MILK | TM | | | | |
| 86 | 822 | 713 | 1409 | +3.1 | 37% | +55 | 28% | +97 | 23% | +19 | 16% | +47 |

9 BROOKMORE IMPRINT 128B

MALE JVJ 128B 1800514 FEBRUARY 16 2014

CONNEALY IMPRESSION AMF CAF NHF DDF
CONNEALY IMPRINT 8317 AMF CAF NHF 1659104
ELLINA OF CONANGA 868 7127

CONNEALY REFLECTION AMF CAF NHF DDF
PEARL PAMMY OF CONANGA 194 CAF DDF
G A R GRID MAKER AMF CAF NHF DDF
ELIGENCE PLUS OF CONANGA

| CARCASS | |
|---------|-------|
| MARB | 5.05 |
| BF | 5.27 |
| REA | 12.52 |
| %LMY | 63.53 |

MV F PERFECT BLEND 32H
BROOKMORE DAISY 300P 1212159
BROOKMORE DAISY 40K

N BAR EMULATION EXT AMF CAF NHF DDF
MV F TIBBIE 64F
V D A R LUCYS BOY AMF CAF NHF DDF
BROOKMORE DAISY 209H

| ACT. BW | ACT. WW | ADJ. 205 | ADJ. 365 | EPDS | | | | | | | | |
|---------|---------|----------|----------|------|-----|-----|------|-----|-----|-----|-----|-----|
| | | | | BW | WW | YW | MILK | TM | | | | |
| 104 | 805 | 729 | 1369 | +6.5 | 38% | +52 | 29% | +87 | 23% | +21 | 16% | +47 |

11 BROOKMORE IMPRINT 79B

MALE JVJ 79B 1800436 JANUARY 31 2014

CONNEALY IMPRESSION AMF CAF NHF DDF
CONNEALY IMPRINT 8317 AMF CAF NHF 1659104
ELLINA OF CONANGA 868 7127

CONNEALY REFLECTION AMF CAF NHF DDF
PEARL PAMMY OF CONANGA 194 CAF DDF
G A R GRID MAKER AMF CAF NHF DDF
ELIGENCE PLUS OF CONANGA

| CARCASS | |
|---------|-------|
| MARB | 5.00 |
| BF | 10.48 |
| REA | 13.96 |
| %LMY | 59.39 |

VERMILION DATELINE 7078 AMF CAF NHF DDF
BROOKMORE ALETA 116P 1211909
BROOKMORE ALETA 30F

CONNEALY DATELINE DDF
VERMILION BLACKBIRD 5044
MINERTS FORTUNE 2000 AMF CAF NHF DDF
BROOKMORE ALETA 121D

| ACT. BW | ACT. WW | ADJ. 205 | ADJ. 365 | EPDS | | | | | | | | |
|---------|---------|----------|----------|------|-----|-----|------|-----|-----|-----|-----|-----|
| | | | | BW | WW | YW | MILK | TM | | | | |
| 90 | 845 | 719 | 1455 | +4.1 | 38% | +59 | 29% | +99 | 24% | +20 | 16% | +50 |



CONNEALY IMPRINT 8317

BW +2.7 WW +65 YW +107 Milk +18 TM +51 SC: +1.23

BW: 82 lbs. Adj. 205D: 684 lbs. Adj. 365D: 1305 lbs.

Connealy Imprint is a growth and carcass superstar with extra muscle and body length.

13 SONS SELL

LOT 12
BROOKMORE
IMPRINT
78B



12 BROOKMORE IMPRINT 78B

MALE JVJ 78B 1800429 JANUARY 30 2014

CONNELLY IMPRESSION AMF CAF NHF DDF
CONNELLY IMPRINT 8317 AMF CAF NHF 1659104
ELLINA OF CONANGA 868 7127

CONNELLY REFLECTION AMF CAF NHF DDF
PEARL PAMMY OF CONANGA 194 CAF DDF
G A R GRID MAKER AMF CAF NHF DDF
ELIGENCE PLUS OF CONANGA

| CARCASS | |
|---------|-------|
| MARB | 5.65 |
| BF | 10.00 |
| REA | 14.17 |
| %LMY | 60.05 |

S A F 598 BANDO 5175 AMF CAC DDF
BROOKMORE ALETA 108P CAC 1212196
BROOKMORE ALETA 56L

BON VIEW BANDO 598 AMF CAC DDF
S A F ROYAL LASS 1002
MVF FULLBACK 100J
BROOKMORE ALETA 63H

| ACT. | | ADJ. | | EPDS | | | | | | | | |
|------|-----|------|------|------|-----|-----|------|-----|-----|-----|-----|-----|
| BW | WW | 205 | 365 | BW | WW | YW | MILK | TM | | | | |
| 86 | 854 | 723 | 1545 | +3.1 | 38% | +57 | 29% | +93 | 24% | +19 | 16% | +48 |



LOT 13 - BROOKMORE IMPRINT 13B

13 BROOKMORE IMPRINT 13B

MALE JVJ 13B 1800523 JANUARY 14 2014

CONNELLY IMPRESSION AMF CAF NHF DDF
CONNELLY IMPRINT 8317 AMF CAF NHF 1659104
ELLINA OF CONANGA 868 7127

CONNELLY REFLECTION AMF CAF NHF DDF
PEARL PAMMY OF CONANGA 194 CAF DDF
G A R GRID MAKER AMF CAF NHF DDF
ELIGENCE PLUS OF CONANGA

| CARCASS | |
|---------|-------|
| MARB | 5.20 |
| BF | 10.02 |
| REA | 17.01 |
| %LMY | 62.33 |

S A F 598 BANDO 5175 AMF CAC DDF
BROOKMORE DAISY 212R CAC 1293214
BROOKMORE DAISY 209H

BON VIEW BANDO 598 AMF CAC DDF
S A F ROYAL LASS 1002
EBON HILL EQUALIZER 49'96
MVBF DAISY 4A

| ACT. | | ADJ. | | EPDS | | | | | | | | |
|------|-----|------|------|------|-----|-----|------|-----|-----|-----|-----|-----|
| BW | WW | 205 | 365 | BW | WW | YW | MILK | TM | | | | |
| 98 | 936 | 751 | 1707 | +5.4 | 38% | +56 | 29% | +99 | 24% | +22 | 16% | +50 |



LOT 14 - BROOKMORE IMPRINT 15B

14 BROOKMORE IMPRINT 15B

MALE JVJ 15B 1800318 JANUARY 15 2014

CONNELLY IMPRESSION AMF CAF NHF DDF
CONNELLY IMPRINT 8317 AMF CAF NHF 1659104
ELLINA OF CONANGA 868 7127

CONNELLY REFLECTION AMF CAF NHF DDF
PEARL PAMMY OF CONANGA 194 CAF DDF
G A R GRID MAKER AMF CAF NHF DDF
ELIGENCE PLUS OF CONANGA

| CARCASS | |
|---------|-------|
| MARB | 5.30 |
| BF | 7.14 |
| REA | 13.92 |
| %LMY | 62.76 |

ALBERDA TRAVELER 416 AMF CAF NHF DDF
BROOKMORE LADY JANE 137L 1067776
BROOKMORE LADY JANE 56A

D H D TRAVELER 6807 AMF NHF
ALBERDA QUEEN KIMBERLY 222
PYRAMID BACK STREET 6W
BROOKMORE LADY JANE 68W

| ACT. | | ADJ. | | EPDS | | | | | | | | |
|------|-----|------|------|------|-----|-----|------|-----|-----|-----|-----|-----|
| BW | WW | 205 | 365 | BW | WW | YW | MILK | TM | | | | |
| 86 | 785 | 660 | 1470 | +4.1 | 38% | +49 | 30% | +85 | 24% | +18 | 17% | +43 |



LOT 15 - BROOKMORE IMPRINT 19B



LOT 16 - BROOKMORE IMPRINT 55B

15 BROOKMORE IMPRINT 19B

MALE JVJ 19B 1800605 JANUARY 15 2014

CONNEALY IMPRESSION AMF CAF NHF DDF
CONNEALY IMPRINT 8317 AMF CAF NHF 1659104
 ELLINA OF CONANGA 868 7127

CONNEALY REFLECTION AMF CAF NHF DDF
 PEARL PAMMY OF CONANGA 194 CAF DDF
 G A R GRID MAKER AMF CAF NHF DDF
 ELIGENCE PLUS OF CONANGA

| CARCASS | |
|---------|-------|
| MARB | 5.00 |
| BF | 10.00 |
| REA | 13.05 |
| %LMY | 59.13 |

QUAKER HILL OBJECTIVE 3J15 AMF CAF NHF DDF
BROOKMORE MAIDEN 130W 1514098
 BROOKMORE MAIDEN 221P

S S OBJECTIVE T510 OT26 DMF AMF CAF NHF DDF
 QUAKER HILL QUEEN 1L4 AMF NHF
 SITZ ALLIANCE 6595 DMF AMF CAF NHF DDF
 BROOKMORE MAIDEN 142K

| ACT. BW | ACT. WW | ADJ. 205 | ADJ. 365 | EPDS | | | | | | | | |
|---------|---------|----------|----------|------|-----|-----|------|-----|-----|-----|-----|-----|
| | | | | BW | WW | YW | MILK | TM | | | | |
| 74 | 810 | 650 | 1370 | +1.3 | 37% | +55 | 29% | +92 | 23% | +18 | 16% | +46 |

17 BROOKMORE IMPRINT 129B

MALE JVJ 129B 1800574 FEBRUARY 16 2014

CONNEALY IMPRESSION AMF CAF NHF DDF
CONNEALY IMPRINT 8317 AMF CAF NHF 1659104
 ELLINA OF CONANGA 868 7127

CONNEALY REFLECTION AMF CAF NHF DDF
 PEARL PAMMY OF CONANGA 194 CAF DDF
 G A R GRID MAKER AMF CAF NHF DDF
 ELIGENCE PLUS OF CONANGA

| CARCASS | |
|---------|-------|
| MARB | 6.00 |
| BF | 5.24 |
| REA | 12.51 |
| %LMY | 63.56 |

BOYD BEEF MAKER 3069 AMF CAF NHF DDF
BROOKMORE LADY 80T AMF 1375935
 BROOKMORE LADY 245M

C A FUTURE DIRECTION 5321 AMF CAF NHF DDF
 BOYD FOREVER LADY 7120
 MVF PERFECT BLEND 32H
 BROOKMORE LENLOCK 87C

| ACT. BW | ACT. WW | ADJ. 205 | ADJ. 365 | EPDS | | | | | | | | |
|---------|---------|----------|----------|------|-----|-----|------|-----|-----|-----|-----|-----|
| | | | | BW | WW | YW | MILK | TM | | | | |
| 88 | 752 | 680 | 1300 | +2.9 | 37% | +49 | 29% | +83 | 23% | +20 | 16% | +45 |

16 BROOKMORE IMPRINT 55B

MALE JVJ 55B 1800596 JANUARY 26 2014

CONNEALY IMPRESSION AMF CAF NHF DDF
CONNEALY IMPRINT 8317 AMF CAF NHF 1659104
 ELLINA OF CONANGA 868 7127

CONNEALY REFLECTION AMF CAF NHF DDF
 PEARL PAMMY OF CONANGA 194 CAF DDF
 G A R GRID MAKER AMF CAF NHF DDF
 ELIGENCE PLUS OF CONANGA

| CARCASS | |
|---------|-------|
| MARB | 6.00 |
| BF | 9.05 |
| REA | 13.38 |
| %LMY | 60.37 |

K C F BENNETT TOTAL AMF CAF NHF DDF
BROOKMORE KARAMA 185U 1441450
 BROOKMORE KARAMA 77P

SITZ ALLIANCE 6595 DMF AMF CAF NHF DDF
 EXT OF CONANGA 6790
 VERMILION DATELINE 7078 AMF CAF NHF DDF
 BROOKMORE KARAMA 177L

| ACT. BW | ACT. WW | ADJ. 205 | ADJ. 365 | EPDS | | | | | | | | |
|---------|---------|----------|----------|------|-----|-----|------|-----|-----|-----|-----|-----|
| | | | | BW | WW | YW | MILK | TM | | | | |
| 86 | 901 | 752 | 1566 | +2.7 | 37% | +59 | 29% | +98 | 23% | +17 | 16% | +47 |

**ASK ABOUT
 OUR SIGHT UNSEEN
 PURCHASE PLAN**

**Your satisfaction
 is guaranteed**



LOT 18 - BROOKMORE IMPRINT 32B

18 BROOKMORE IMPRINT 32B

MALE JVJ 32B 1800585 JANUARY 20 2014

CONNEALY IMPRESSION AMF CAF NHF DDF
CONNEALY IMPRINT 8317 AMF CAF NHF 1659104
 ELLINA OF CONANGA 868 7127

CONNEALY REFLECTION AMF CAF NHF DDF
 PEARL PAMMY OF CONANGA 194 CAF DDF
 G A R GRID MAKER AMF CAF NHF DDF
 ELIGENCE PLUS OF CONANGA

| CARCASS | |
|---------|-------|
| MARB | 5.25 |
| BF | 8.59 |
| REA | 14.30 |
| %LMY | 61.58 |

S A V NET WORTH 4200 AMF CAF NHF DDF
BROOKMORE TIBBIE 47U 1441267
 MVF TIBBIE 38H

S A V 8180 TRAVELER 004 DMF AMF CAF NHF OSF DDF
 S A V MAY 2410
 BROOKMORE LANCER 32F
 MVF TIBBIE 35A

| ACT. BW | ACT. WW | ADJ. 205 | ADJ. 365 | EPDS | | | | | | | | |
|---------|---------|----------|----------|------|-----|-----|------|-----|-----|-----|-----|-----|
| | | | | BW | WW | YW | MILK | TM | | | | |
| 80 | 802 | 656 | 1312 | +2.7 | 37% | +52 | 29% | +89 | 23% | +14 | 16% | +40 |



LOT 19 - BROOKMORE IMPRINT 61B



LOT 20 - BROOKMORE IMPRINT 62B

19 BROOKMORE IMPRINT 61B

MALE JVJ 61B 1800390 TWIN JANUARY 27 2014

CONNEALY IMPRESSION AMF CAF NHF DDF
CONNEALY IMPRINT 8317 AMF CAF NHF **1659104**
 ELLINA OF CONANGA 868 7127

CONNEALY REFLECTION AMF CAF NHF DDF
 PEARL PAMMY OF CONANGA 194 CAF DDF
 G A R GRID MAKER AMF CAF NHF DDF
 ELIGENCE PLUS OF CONANGA

| CARCASS | |
|---------|-------|
| MARB | 4.75 |
| BF | 5.27 |
| REA | 13.78 |
| %LMY | 64.55 |

SITZ ALLIANCE 6595 DMF AMF CAF NHF DDF
BROOKMORE TIBBIE 46M 1112732
 BROOKMORE TIBBIE 124K

SITZ TRAVELER 8180 AMF CAF NHF DDF
 SITZ BARBARAMERE JET 2698
 BROOKMORE TOUCHSTONE 2F
 BROOKMORE TIBBIE 93F

| ACT. BW | ACT. WW | ADJ. 205 | ADJ. 365 | EPDS | | | | |
|---------|---------|----------|----------|--------|-------|-------|-------|-----|
| | | | | BW | WW | YW | MILK | TM |
| 72 | 821 | 713 | 1371 | +3.0 P | +49 P | +86 P | +19 P | +44 |

20 BROOKMORE IMPRINT 62B

MALE JVJ 62B 1800392 TWIN JANUARY 27 2014

CONNEALY IMPRESSION AMF CAF NHF DDF
CONNEALY IMPRINT 8317 AMF CAF NHF **1659104**
 ELLINA OF CONANGA 868 7127

CONNEALY REFLECTION AMF CAF NHF DDF
 PEARL PAMMY OF CONANGA 194 CAF DDF
 G A R GRID MAKER AMF CAF NHF DDF
 ELIGENCE PLUS OF CONANGA

| CARCASS | |
|---------|-------|
| MARB | 4.25 |
| BF | 6.19 |
| REA | 13.04 |
| %LMY | 63.02 |

SITZ ALLIANCE 6595 DMF AMF CAF NHF DDF
BROOKMORE TIBBIE 46M 1112732
 BROOKMORE TIBBIE 124K

SITZ TRAVELER 8180 AMF CAF NHF DDF
 SITZ BARBARAMERE JET 2698
 BROOKMORE TOUCHSTONE 2F
 BROOKMORE TIBBIE 93F

| ACT. BW | ACT. WW | ADJ. 205 | ADJ. 365 | EPDS | | | | |
|---------|---------|----------|----------|--------|-------|-------|-------|-----|
| | | | | BW | WW | YW | MILK | TM |
| 70 | 822 | 714 | 1250 | +3.0 P | +49 P | +86 P | +19 P | +44 |

From the Vet. . .

Welcome to the 20th Annual Cattleman's Connection Sale. I have had the privilege of working with Brookmore Angus for more than 20 years. One of my jobs within this herd is to maintain the overall health status of the herd. We have long since moved from concentrating on individual sick animals to focusing on the overall general health of the entire herd. The health program followed for the bulls includes vaccination with Bovishield 4 FP and Ultrabac 7-S on the way to pasture & boosting at weaning time. Dectomax pour-on is given both spring & fall. One Shot vaccine is also given in the fall. As these bulls are introduced to their new herds, I would strongly recommend they be boosted with these vaccines or converted to the new herds' vaccination program.

The majority of bulls presented for sale are AI sired. They are the result of an immense amount of effort in an intensive AI & synchronization program, all done to present some of the best bulls you will see in one group anywhere. These bulls have been selected from approximately 160 bull calves and fed a high plane of nutrition and minerals to optimize growth and fertility.

Breeding Soundness Evaluations include scrotal measures, semen evaluation and structural evaluation. There are three possible outcomes to the evaluation.

- 1) Satisfactory:
 - a) scrotal size is at or above breed standards for the age of the bull. ****we use actual measures not adjusted for age****
 - b) Semen evaluation has shown 70% or more of sperm are normal with good motility.
 - c) The bull is structurally sound for breeding.
- 2) Deferred Decision:
 - a) Scrotal size is at or above breed standards for the age of the bull.
 - b) Semen evaluation shows less than 70% normal sperm and/or motility is suspect.
 - c) The bull is structurally sound for breeding.
- 3) Unsatisfactory: Don't worry; these bulls don't come to the sale.

Note: Deferred Decision bulls usually improve with age. As we follow these bulls through each spring, all but a few test Satisfactory as they gain maturity. These Decision Deferred bulls are presented for sale with a full breeder guarantee behind them. Buy with confidence.

These bulls have been fed very well to get them looking so impressive. Once they hit pasture expect them to lose some condition as they become active breeders and adapt to a pasture ration. A 60 day breeding season with up to 20 females is a good first year expectation. For a more intense breeding program, I would recommend supplemental feeding to maintain condition. Remember, these bulls are still growing so look after them during and after the breeding season.

Dr. Trevor Shamanski, Brandon Hills Veterinary Clinic



LOT 21

**BROOKMORE
SIGNIFICANT
63B**

21

BROOKMORE SIGNIFICANT 63B

MALE JVJ 63B 1800522 JANUARY 27 2014

CONNEALY CONSENSUS 7229 AMF CAF NHF DDF
EXAR SIGNIFICANT 1769B AMF CAF DDF 1707960
SITZ HENRIETTA PRIDE 643T

CONNEALY CONSENSUS DDF
BLUE LILLY OF CONANGA 16 CAF
CONNEALY ONWARD DMF AMF CAF NHF DDF
SITZ HENRIETTA PRIDE 81M

| CARCASS | |
|---------|-------|
| MARB | 4.50 |
| BF | 4.80 |
| REA | 13.46 |
| %LMY | 64.78 |

S A F 598 BANDO 5175 AMF CAC DDF
BROOKMORE TIBBIE 172R CAF 1293199
MVF TIBBIE 38H

BON VIEW BANDO 598 AMF CAC DDF
S A F ROYAL LASS 1002
BROOKMORE LANCER 32F
MVF TIBBIE 35A

| ACT. BW | ACT. WW | ADJ. 205 | ADJ. 365 | EPDS | | | | |
|---------|---------|----------|----------|----------|---------|---------|---------|-----|
| | | | | BW | WW | YW | MILK | TM |
| 90 | 776 | 653 | 1403 | +4.1 38% | +47 29% | +80 23% | +24 14% | +48 |



LOT 22 - BROOKMORE SIGNIFICANT 41B

22

BROOKMORE SIGNIFICANT 41B

MALE JVJ 41B 1800527 JANUARY 22 2014

CONNEALY CONSENSUS 7229 AMF CAF NHF DDF
EXAR SIGNIFICANT 1769B AMF CAF DDF 1707960
SITZ HENRIETTA PRIDE 643T

CONNEALY CONSENSUS DDF
BLUE LILLY OF CONANGA 16 CAF
CONNEALY ONWARD DMF AMF CAF NHF DDF
SITZ HENRIETTA PRIDE 81M

| CARCASS | |
|---------|-------|
| MARB | 5.20 |
| BF | 5.84 |
| REA | 13.92 |
| %LMY | 64.09 |

MVF STOCKMAN 45H
BROOKMORE TIBBIE 285R 1293250
BROOKMORE TIBBIE 94K

TC STOCKMAN 365 DDF
DODSWOOD ENCHANTRESS MAX-90
WINDOVER MATADOR 13H
BROOKMORE TIBBIE 196H

| ACT. BW | ACT. WW | ADJ. 205 | ADJ. 365 | EPDS | | | | |
|---------|---------|----------|----------|----------|---------|---------|---------|-----|
| | | | | BW | WW | YW | MILK | TM |
| 80 | 780 | 643 | 1213 | +2.6 37% | +47 29% | +85 22% | +22 14% | +46 |

EXAR SIGNIFICANT 1769B

BW +2.1 WW +57 YW +93 Milk +33 TM +62 SC: +0.62

BW: 87 lbs. Adj. 205D: 763 lbs.

EXAR Significant 1769B is one of the most impressive Consensus sons and out of the famous full sister to Sitz Upward. His EPDs rank him among the breed's highest for \$Value.

5 SONS SELL





LOT 23 - BROOKMORE SIGNIFICANT 20B



LOT 25 - BROOKMORE SIGNIFICANT 46B

23 BROOKMORE SIGNIFICANT 20B

MALE JVJ 20B 1800418 JANUARY 16 2014

| CONNEALY CONSENSUS 7229 AMF CAF NHF DDF EXAR SIGNIFICANT 1769B AMF CAF DDF 1707960 SITZ HENRIETTA PRIDE 643T | CONNEALY CONSENSUS DDF BLUE LILLY OF CONANGA 16 CAF CONNEALY ONWARD DMF AMF CAF NHF DDF SITZ HENRIETTA PRIDE 81M | <table border="1"> <tr><th colspan="2">CARCASS</th></tr> <tr><td>MARB</td><td>5.75</td></tr> <tr><td>BF</td><td>7.14</td></tr> <tr><td>REA</td><td>13.14</td></tr> <tr><td>%LMY</td><td>62.13</td></tr> </table> | CARCASS | | MARB | 5.75 | BF | 7.14 | REA | 13.14 | %LMY | 62.13 |
|---|---|--|---------|--|------|------|----|------|-----|-------|------|-------|
| CARCASS | | | | | | | | | | | | |
| MARB | 5.75 | | | | | | | | | | | |
| BF | 7.14 | | | | | | | | | | | |
| REA | 13.14 | | | | | | | | | | | |
| %LMY | 62.13 | | | | | | | | | | | |
| SITZ ALLIANCE 6595 DMF AMF CAF NHF DDF BROOKMORE TIBBIE 53P 1212022 MVF TIBBIE 38H | SITZ TRAVELER 8180 AMF CAF NHF DDF SITZ BARBARAMERE JET 2698 BROOKMORE LANCER 32F MVF TIBBIE 35A | | | | | | | | | | | |

| ACT. BW | ACT. WW | ADJ. 205 | ADJ. 365 | EPDS | | | | | | | | |
|---------|---------|----------|----------|------|-----|-----|------|-----|-----|-----|-----|-----|
| | | | | BW | WW | YW | MILK | TM | | | | |
| 78 | 870 | 700 | 1492 | +1.5 | 38% | +51 | 29% | +84 | 23% | +23 | 14% | +49 |

25 BROOKMORE SIGNIFICANT 46B

MALE JVJ 46B 1800581 JANUARY 24 2014

| CONNEALY CONSENSUS 7229 AMF CAF NHF DDF EXAR SIGNIFICANT 1769B AMF CAF DDF 1707960 SITZ HENRIETTA PRIDE 643T | CONNEALY CONSENSUS DDF BLUE LILLY OF CONANGA 16 CAF CONNEALY ONWARD DMF AMF CAF NHF DDF SITZ HENRIETTA PRIDE 81M | <table border="1"> <tr><th colspan="2">CARCASS</th></tr> <tr><td>MARB</td><td>5.30</td></tr> <tr><td>BF</td><td>4.29</td></tr> <tr><td>REA</td><td>14.00</td></tr> <tr><td>%LMY</td><td>65.74</td></tr> </table> | CARCASS | | MARB | 5.30 | BF | 4.29 | REA | 14.00 | %LMY | 65.74 |
|---|---|--|---------|--|------|------|----|------|-----|-------|------|-------|
| CARCASS | | | | | | | | | | | | |
| MARB | 5.30 | | | | | | | | | | | |
| BF | 4.29 | | | | | | | | | | | |
| REA | 14.00 | | | | | | | | | | | |
| %LMY | 65.74 | | | | | | | | | | | |
| W C C SPECIAL DESIGN L309 AMF CAF NHF DDF ATLASTA BLACKCAP 12U 1473726 ATLASTA BLACKCAP 114M | BON VIEW NEW DESIGN 878 AMF CAF NHF DDF N BAR PRIMROSE 2424 SVF SIEBRINGS FOREVER RUSS AMF CAF NHF DDF MLA BLACKCAP 6'93 | | | | | | | | | | | |

| ACT. BW | ACT. WW | ADJ. 205 | ADJ. 365 | EPDS | | | | | | | | |
|---------|---------|----------|----------|------|-----|-----|------|-----|-----|-----|-----|-----|
| | | | | BW | WW | YW | MILK | TM | | | | |
| 100 | 892 | 742 | 1418 | +4.9 | 37% | +57 | 28% | +92 | 21% | +25 | 14% | +54 |

24 BROOKMORE SIGNIFICANT 58B

MALE JVJ 58B 1800567 TWIN JANUARY 26 2014

| CONNEALY CONSENSUS 7229 AMF CAF NHF DDF EXAR SIGNIFICANT 1769B AMF CAF DDF 1707960 SITZ HENRIETTA PRIDE 643T | CONNEALY CONSENSUS DDF BLUE LILLY OF CONANGA 16 CAF CONNEALY ONWARD DMF AMF CAF NHF DDF SITZ HENRIETTA PRIDE 81M | <table border="1"> <tr><th colspan="2">CARCASS</th></tr> <tr><td>MARB</td><td>5.15</td></tr> <tr><td>BF</td><td>6.19</td></tr> <tr><td>REA</td><td>13.20</td></tr> <tr><td>%LMY</td><td>63.15</td></tr> </table> | CARCASS | | MARB | 5.15 | BF | 6.19 | REA | 13.20 | %LMY | 63.15 |
|---|---|--|---------|--|------|------|----|------|-----|-------|------|-------|
| CARCASS | | | | | | | | | | | | |
| MARB | 5.15 | | | | | | | | | | | |
| BF | 6.19 | | | | | | | | | | | |
| REA | 13.20 | | | | | | | | | | | |
| %LMY | 63.15 | | | | | | | | | | | |
| CONNEALY FREIGHTLINER AMF CAF NHF DDF BROOKMORE ERICETTE 227S 1345881 BROOKMORE ERICETTE 10P | BON VIEW BANDO 598 AMF CAF NHF DDF JOANA ERICA OF CONANGA BUSHS GRAND DESIGN AMF CAF NHF DDF BROOKMORE ERICETTE 135M | | | | | | | | | | | |

| ACT. BW | ACT. WW | ADJ. 205 | ADJ. 365 | EPDS | | | | | | | | |
|---------|---------|----------|----------|------|----|-----|------|-----|---|-----|---|-----|
| | | | | BW | WW | YW | MILK | TM | | | | |
| 74 | 795 | 663 | 1333 | +2.5 | P | +48 | P | +83 | P | +26 | P | +50 |

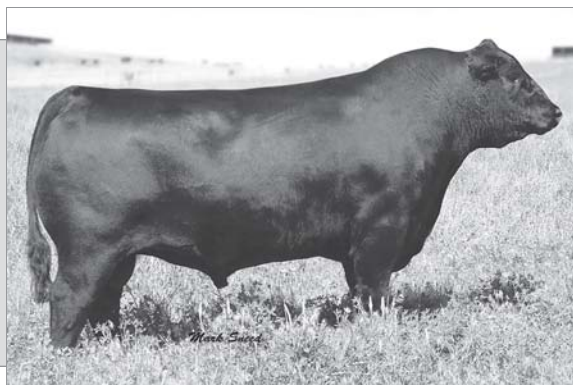
WHAT DOES OUR CARCASS DATA MEAN?
See the last page of this catalog
- Scans taken -
January 16, 2015

CONNEALY CONSENSUS 7229

BW +2.2 WW +634 YW +104 Milk +33 TM +65 SC: +0.97
BW: 71 lbs. Adj. 205D: 817 lbs. Adj. 365D: 1420 lbs.

Connealy Consensus 7229 is a bull with powerful stature, strong EPDS and outstanding phenotype. He has proven a reliable sire producing low birth with excellent weaning, yearling weights and marbling. Consensus 7229 has sired more high selling sons than any bull in the business and his daughters are top prospects.

7 SONS SELL





LOT 26 - BROOKMORE CONCENSUS 70B



LOT 28 - BROOKMORE CONCENSUS 69B

26 BROOKMORE CONCENSUS 70B

MALE JVJ 70B 1800618 JANUARY 29 2014

CONNELY CONSENSUS DDF
CONNELY CONSENSUS 7229 AMF CAF NHF DDF 1593730
 BLUE LILLY OF CONANGA 16 CAF

REMITALL SUPEREVENT 532S
ATLASTA BLACKCAP 31X 1582938
 ATLASTA BB BLACKCAP 012T

KMK ALLIANCE 6595 187 AMF CAF NHF DDF
 BLINDA OF CONANGA 004
 WOODHILL ADMIRAL 77K AMF CAF NHF DDF
 BLUE CASH OF CONANGA 6020 CAF
 JUSTAMERE 1118 CASH 665P
 KBJ ANNIE 829N
 BON VIEW NEW DESIGN 878 AMF CAF NHF DDF
 BB BLACKCAP 15P

| CARCASS | |
|---------|-------|
| MARB | 5.85 |
| BF | 10.48 |
| REA | 14.05 |
| %LMY | 59.46 |

| ACT. BW | ACT. WW | ADJ. 205 | ADJ. 365 | EPDS | | | | | | | | |
|---------|---------|----------|----------|------|-----|-----|------|------|-----|-----|-----|-----|
| | | | | BW | WW | YW | MILK | TM | | | | |
| 68 | 805 | 693 | 1369 | +0.2 | 37% | +59 | 28% | +101 | 20% | +27 | 21% | +57 |

28 BROOKMORE CONCENSUS 69B

MALE JVJ 69B 1800727 JANUARY 28 2014

CONNELY CONSENSUS DDF
CONNELY CONSENSUS 7229 AMF CAF NHF DDF 1593730
 BLUE LILLY OF CONANGA 16 CAF

SITZ UPWARD 307R DMF AMF CAF NHF DDF
BROOKMORE ALETA 154Y 1603750
 BROOKMORE ALETA 37S

KMK ALLIANCE 6595 187 AMF CAF NHF DDF
 BLINDA OF CONANGA 004
 WOODHILL ADMIRAL 77K AMF CAF NHF DDF
 BLUE CASH OF CONANGA 6020 CAF
 CONNEALY ONWARD DMF AMF CAF NHF DDF
 SITZ HENRIETTA PRIDE 81M
 BUSHS GRAND DESIGN AMF CAF NHF DDF
 BROOKMORE ALETA 108P CAC

| CARCASS | |
|---------|-------|
| MARB | 6.90 |
| BF | 6.19 |
| REA | 12.04 |
| %LMY | 62.21 |

| ACT. BW | ACT. WW | ADJ. 205 | ADJ. 365 | EPDS | | | | | | | | |
|---------|---------|----------|----------|------|-----|-----|------|------|-----|-----|-----|-----|
| | | | | BW | WW | YW | MILK | TM | | | | |
| 78 | 812 | 720 | 1256 | +1.7 | 37% | +61 | 29% | +106 | 24% | +30 | 21% | +61 |

27 BROOKMORE CONCENSUS 141B

MALE JVJ 141B 1800736 FEBRUARY 22 2014

CONNELY CONSENSUS DDF
CONNELY CONSENSUS 7229 AMF CAF NHF DDF 1593730
 BLUE LILLY OF CONANGA 16 CAF

SITZ UPWARD 307R DMF AMF CAF NHF DDF
BROOKMORE ALETA 193Y 1603608
 BROOKMORE ALETA 164N

KMK ALLIANCE 6595 187 AMF CAF NHF DDF
 BLINDA OF CONANGA 004
 WOODHILL ADMIRAL 77K AMF CAF NHF DDF
 BLUE CASH OF CONANGA 6020 CAF
 CONNEALY ONWARD DMF AMF CAF NHF DDF
 SITZ HENRIETTA PRIDE 81M
 BON VIEW NEW DESIGN 878 AMF CAF NHF DDF
 BROOKMORE ALETA 56L

| CARCASS | |
|---------|-------|
| MARB | 6.50 |
| BF | 6.31 |
| REA | 12.04 |
| %LMY | 62.08 |

| ACT. BW | ACT. WW | ADJ. 205 | ADJ. 365 | EPDS | | | | | | | | |
|---------|---------|----------|----------|------|-----|-----|------|-----|-----|-----|-----|-----|
| | | | | BW | WW | YW | MILK | TM | | | | |
| 80 | 699 | 685 | 1327 | +2.0 | 37% | +54 | 29% | +95 | 24% | +29 | 21% | +56 |

29 BROOKMORE CONCENSUS 35B

MALE JVJ 35B 1800729 TWIN JANUARY 21 2014

CONNELY CONSENSUS DDF
CONNELY CONSENSUS 7229 AMF CAF NHF DDF 1593730
 BLUE LILLY OF CONANGA 16 CAF

SITZ UPWARD 307R DMF AMF CAF NHF DDF
BROOKMORE ROSEBUD 158Y 1603568
 BROOKMORE ROSEBUD 72M

KMK ALLIANCE 6595 187 AMF CAF NHF DDF
 BLINDA OF CONANGA 004
 WOODHILL ADMIRAL 77K AMF CAF NHF DDF
 BLUE CASH OF CONANGA 6020 CAF
 CONNEALY ONWARD DMF AMF CAF NHF DDF
 SITZ HENRIETTA PRIDE 81M
 G D A R ROLLS ROYCE 203
 SARAMAR ROSEBUD 60J

| CARCASS | |
|---------|-------|
| MARB | 6.25 |
| BF | 9.52 |
| REA | 11.82 |
| %LMY | 58.62 |

| ACT. BW | ACT. WW | ADJ. 205 | ADJ. 365 | EPDS | | | | | | | | |
|---------|---------|----------|----------|------|----|-----|------|------|---|-----|---|-----|
| | | | | BW | WW | YW | MILK | TM | | | | |
| 62 | 786 | 680 | 1302 | +3.7 | P | +59 | P | +103 | P | +29 | P | +58 |



LOT 27 - BROOKMORE CONCENSUS 141B

30 BROOKMORE CONCENSUS 57B

MALE JVJ 57B 1800696 JANUARY 26 2014

CONNELY CONSENSUS DDF
CONNELY CONSENSUS 7229 AMF CAF NHF DDF 1593730
 BLUE LILLY OF CONANGA 16 CAF

SITZ UPWARD 307R DMF AMF CAF NHF DDF
BROOKMORE ALETA 85Y 1603660
 BROOKMORE ALETA 157P

KMK ALLIANCE 6595 187 AMF CAF NHF DDF
 BLINDA OF CONANGA 004
 WOODHILL ADMIRAL 77K AMF CAF NHF DDF
 BLUE CASH OF CONANGA 6020 CAF
 CONNEALY ONWARD DMF AMF CAF NHF DDF
 SITZ HENRIETTA PRIDE 81M
 VERMILION DATELINE 7078 AMF CAF NHF DDF
 BROOKMORE ALETA 120E

| CARCASS | |
|---------|-------|
| MARB | 4.70 |
| BF | 4.80 |
| REA | 12.99 |
| %LMY | 64.40 |

| ACT. BW | ACT. WW | ADJ. 205 | ADJ. 365 | EPDS | | | | | | | | |
|---------|---------|----------|----------|------|-----|-----|------|-----|-----|-----|-----|-----|
| | | | | BW | WW | YW | MILK | TM | | | | |
| 82 | 752 | 667 | 1213 | +3.3 | 37% | +57 | 29% | +98 | 24% | +30 | 21% | +59 |



LOT 31 - BROOKMORE CONCENCUS 56B



LOT 33 - BROOKMORE BISMARCK 25B

31 BROOKMORE CONCENCUS 56B

MALE JVJ 56B 1809964 JANUARY 26 2014

CONNEALY CONSENSUS DDF
CONNEALY CONSENSUS 7229 AMF CAF NHF DDF 1593730
 BLUE LILLY OF CONANGA 16 CAF

KMK ALLIANCE 6595 187 AMF CAF NHF DDF
 BLINDA OF CONANGA 004
 WOODHILL ADMIRAL 77K AMF CAF NHF DDF
 BLUE CASH OF CONANGA 6020 CAF

| CARCASS | |
|---------|-------|
| MARB | 5.75 |
| BF | 6.19 |
| REA | 12.72 |
| %LMY | 62.76 |

BUSHES GRAND DESIGN AMF CAF NHF DDF
BROOKMORE ERICETTE 10P 1212309
 BROOKMORE ERICETTE 135M

BON VIEW NEW DESIGN 1407 AMF CAF NHF DDC
 BUSHES LADY DIVIDEND 872
 BENCHMARK MAGIC MAN 007
 MVF ERICETTE 62J

| ACT. BW | ACT. WW | ADJ. 205 | ADJ. 365 | EPDS | | | | | | | | |
|---------|---------|----------|----------|------|-----|-----|------|-----|-----|-----|-----|-----|
| | | | | BW | WW | YW | MILK | TM | | | | |
| 94 | 843 | 706 | 1460 | +3.7 | 38% | +54 | 29% | +89 | 24% | +26 | 23% | +53 |

33 BROOKMORE BISMARCK 25B

MALE JVJ 25B 1800388 JANUARY 17 2014

G A R GRID MAKER AMF CAF NHF DDF
S A V BISMARCK 5682 AMF CAF NHF DDF 1369591
 S A V ABIGALE 0451

G D A R TRAVELER 044 AMF CAF NHF DDF
 G A R PRECISION 2536 AMC NHF
 SCHOENES FIX IT 826 AMF CAF NHF DDF
 S A V ABIGALE 6062

| CARCASS | |
|---------|-------|
| MARB | 4.65 |
| BF | 6.19 |
| REA | 12.31 |
| %LMY | 62.42 |

BENCHMARK MAGIC MAN 007
BROOKMORE BEAUTY 43M 1112527
 CHICO BEAUTY 16G

EBON HILL MAGIC MAN 41'97
 STRATHISLA AUTUMN ROSE 803'98
 ASPELUND'S WILDCAT 27'95
 LLB BEAUTY LASS 75E

| ACT. BW | ACT. WW | ADJ. 205 | ADJ. 365 | EPDS | | | | | | | | |
|---------|---------|----------|----------|------|-----|-----|------|-----|-----|-----|-----|-----|
| | | | | BW | WW | YW | MILK | TM | | | | |
| 78 | 781 | 659 | 1261 | +0.9 | 38% | +43 | 29% | +76 | 24% | +15 | 23% | +37 |

32 BROOKMORE CONCENCUS 118B

MALE JVJ 118B 1800731 FEBRUARY 09 2014

CONNEALY CONSENSUS DDF
CONNEALY CONSENSUS 7229 AMF CAF NHF DDF 1593730
 BLUE LILLY OF CONANGA 16 CAF

KMK ALLIANCE 6595 187 AMF CAF NHF DDF
 BLINDA OF CONANGA 004
 WOODHILL ADMIRAL 77K AMF CAF NHF DDF
 BLUE CASH OF CONANGA 6020 CAF

| CARCASS | |
|---------|-------|
| MARB | 5.40 |
| BF | 7.14 |
| REA | 14.14 |
| %LMY | 62.94 |

SITZ UPWARD 307R DMF AMF CAF NHF DDF
BROOKMORE DAISY 177Y 1603922
 BROOKMORE DAISY 34U

CONNEALY ONWARD DMF AMF CAF NHF DDF
 SITZ HENRIETTA PRIDE 81M
 B C MATRIX 4132 AMF CAF NHF DDF
 BROOKMORE DAISY 45S

| ACT. BW | ACT. WW | ADJ. 205 | ADJ. 365 | EPDS | | | | | | | | |
|---------|---------|----------|----------|------|-----|-----|------|------|-----|-----|-----|-----|
| | | | | BW | WW | YW | MILK | TM | | | | |
| 82 | 782 | 725 | 1349 | +2.0 | 37% | +61 | 28% | +104 | 24% | +31 | 21% | +62 |

34 BROOKMORE BISMARCK 92B

MALE JVJ 92B 1800463 FEBRUARY 02 2014

G A R GRID MAKER AMF CAF NHF DDF
S A V BISMARCK 5682 AMF CAF NHF DDF 1369591
 S A V ABIGALE 0451

G D A R TRAVELER 044 AMF CAF NHF DDF
 G A R PRECISION 2536 AMC NHF
 SCHOENES FIX IT 826 AMF CAF NHF DDF
 S A V ABIGALE 6062

| CARCASS | |
|---------|-------|
| MARB | 4.60 |
| BF | 7.14 |
| REA | 11.91 |
| %LMY | 61.12 |

MVF PERFECT BLEND 32H
BROOKMORE LADY JANE 250P 1212215
 BROOKMORE LADY JANE 137L

N BAR EMULATION EXT AMF CAF NHF DDF
 MVF TIBBIE 64F
 ALBERDA TRAVELER 416 AMF CAF NHF DDF
 BROOKMORE LADY JANE 56A

| ACT. BW | ACT. WW | ADJ. 205 | ADJ. 365 | EPDS | | | | | | | | |
|---------|---------|----------|----------|------|-----|-----|------|-----|-----|-----|-----|-----|
| | | | | BW | WW | YW | MILK | TM | | | | |
| 90 | 804 | 690 | 1362 | +4.3 | 38% | +50 | 29% | +84 | 25% | +22 | 23% | +47 |



S A V BISMARCK 5682

BW +0.3 WW +58 YW +97 Milk +23 TM +52 SC: +1.19



LOT 34 - BROOKMORE BISMARCK 92B



LOT 35
BROOKMORE
PIONEER
23B

35

BROOKMORE PIONEER 23B

MALE JVJ 23B 1809969 TWIN JANUARY 16 2014

S A V FINAL ANSWER 0035 AMF CAF NHF DDF
S A V PIONEER 7301 AMF CAF NHF DDF 1481377
S A V BLACKBIRD 5297 CAC

TC FOREMAN 016 DDF
BROOKMORE ENCHANTRESS 175S 1345658
BROOKMORE ENCHANTRESS 190H

SITZ TRAVELER 8180 AMF CAF NHF DDF
S A V EMULOUS 8145 CAF
BOYD NEW DAY 8005 AMF CAF NHF DDF
S A V BLACKBIRD 1082 CAC
CONNELLY FOREFRONT AMF CAF NHF DDF
TC PRIDE 8067 DDF
EBON HILL EXTRA GOLD 31'95
BROOKMORE ENCHANTRESS 14B

| CARCASS | |
|---------|-------|
| MARB | 5.70 |
| BF | 9.52 |
| REA | 16.09 |
| %LMY | 62.09 |

| ACT. BW | ACT. WW | ADJ. 205 | ADJ. 365 | EPDS | | | | |
|---------|---------|----------|----------|--------|-------|-------|-------|-----|
| | | | | BW | WW | YW | MILK | TM |
| 74 | 896 | 720 | 1448 | +3.2 P | +54 P | +96 P | +21 P | +48 |



LOT 36 - BROOKMORE PIONEER 38B

36

BROOKMORE PIONEER 38B

MALE JVJ 38B 1800615 JANUARY 22 2014

S A V FINAL ANSWER 0035 AMF CAF NHF DDF
S A V PIONEER 7301 AMF CAF NHF DDF 1481377
S A V BLACKBIRD 5297 CAC

MOHNEN DYNAMITE 1356 AMF CAF NHF DDF
BROOKMORE ALETA 234W 1513998
BROOKMORE ALETA 3P

SITZ TRAVELER 8180 AMF CAF NHF DDF
S A V EMULOUS 8145 CAF
BOYD NEW DAY 8005 AMF CAF NHF DDF
S A V BLACKBIRD 1082 CAC
BALDRIDGE KABOOM K243 KCF CAF
MOHNEN JILT 910 AMF CAF DDF
BUSHS GRAND DESIGN AMF CAF NHF DDF
BROOKMORE ALETA 22M

| CARCASS | |
|---------|-------|
| MARB | 6.15 |
| BF | 7.14 |
| REA | 14.73 |
| %LMY | 63.42 |

| ACT. BW | ACT. WW | ADJ. 205 | ADJ. 365 | EPDS | | | | |
|---------|---------|----------|----------|----------|---------|----------|---------|-----|
| | | | | BW | WW | YW | MILK | TM |
| 85 | 817 | 673 | 1469 | +3.0 38% | +56 29% | +101 24% | +19 22% | +47 |

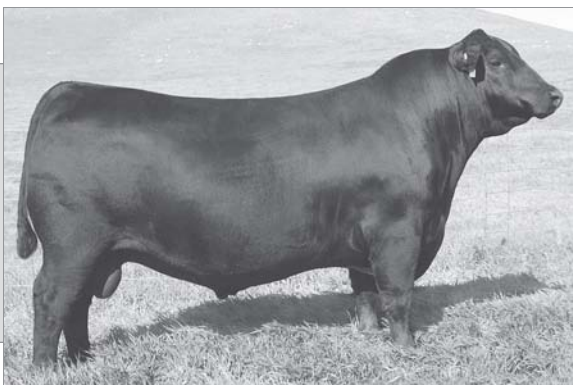
SAV PIONEER 7301

BW +2.1 WW +61 YW +109 Milk +30 TM +61 SC: +1.40

BW: 69 lbs. Adj. 205D: 965 lbs. Adj. 365D: 1466 lbs.

SAV Pioneer combines ideal phenotype and outstanding EPDs. He has moderate birth weight, high growth spread, with rib eye area EPDs that are exceptional.

7 SONS SELL



37

BROOKMORE PIONEER 24B

MALE JVJ 24B 1809971 TWIN JANUARY 16 2014

S A V FINAL ANSWER 0035 AMF CAF NHF DDF
S A V PIONEER 7301 AMF CAF NHF DDF 1481377
 S A V BLACKBIRD 5297 CAC

SITZ TRAVELER 8180 AMF CAF NHF DDF
 S A V EMULOUS 8145 CAF
 BOYD NEW DAY 8005 AMF CAF NHF DDF
 S A V BLACKBIRD 1082 CAC

| CARCASS | |
|---------|-------|
| MARB | 5.80 |
| BF | 8.12 |
| REA | 14.02 |
| %LMY | 61.84 |

TC FOREMAN 016 DDF
BROOKMORE ENCHANTRESS 175S 1345658
 BROOKMORE ENCHANTRESS 190H

CONNELLY FOREFRONT AMF CAF NHF DDF
 TC PRIDE 8067 DDF
 EBON HILL EXTRA GOLD 31'95
 BROOKMORE ENCHANTRESS 14B

| ACT. BW | ACT. WW | ADJ. 205 | ADJ. 365 | EPDS | | | | |
|---------|---------|----------|----------|--------|-------|-------|-------|-----|
| | | | | BW | WW | YW | MILK | TM |
| 62 | 733 | 589 | 1243 | +3.2 P | +54 P | +96 P | +21 P | +48 |



LOT 37 - BROOKMORE PIONEER 24B

38

BROOKMORE PIONEER 28B

MALE JVJ 28B 1809963 JANUARY 18 2014

S A V FINAL ANSWER 0035 AMF CAF NHF DDF
S A V PIONEER 7301 AMF CAF NHF DDF 1481377
 S A V BLACKBIRD 5297 CAC

SITZ TRAVELER 8180 AMF CAF NHF DDF
 S A V EMULOUS 8145 CAF
 BOYD NEW DAY 8005 AMF CAF NHF DDF
 S A V BLACKBIRD 1082 CAC

| CARCASS | |
|---------|-------|
| MARB | 4.30 |
| BF | 5.24 |
| REA | 14.03 |
| %LMY | 64.80 |

S A NEUTRON 377 AMF CAF NHF DDF
BROOKMORE KARAMA 51P 1212028
 BROOKMORE KARAMA 45H

S A F NEUTRON AMF CAF NHF DDF
 S A QUEEN SUSAN 102
 EBON HILL EQUALIZER 49'96
 BROOKMORE KARAMA 119F

| ACT. BW | ACT. WW | ADJ. 205 | ADJ. 365 | EPDS | | | | |
|---------|---------|----------|----------|----------|---------|----------|---------|-----|
| | | | | BW | WW | YW | MILK | TM |
| 88 | 899 | 730 | 1492 | +3.8 38% | +59 29% | +101 25% | +22 23% | +52 |



LOT 40 - BROOKMORE PIONEER 107B

39

BROOKMORE PIONEER 98B

MALE JVJ 98B 1800595 FEBRUARY 03 2014

S A V FINAL ANSWER 0035 AMF CAF NHF DDF
S A V PIONEER 7301 AMF CAF NHF DDF 1481377
 S A V BLACKBIRD 5297 CAC

SITZ TRAVELER 8180 AMF CAF NHF DDF
 S A V EMULOUS 8145 CAF
 BOYD NEW DAY 8005 AMF CAF NHF DDF
 S A V BLACKBIRD 1082 CAC

| CARCASS | |
|---------|-------|
| MARB | 5.20 |
| BF | 11.43 |
| REA | 14.12 |
| %LMY | 58.54 |

BUSHES STRUT 756 AMF CAF NHF DDF
BROOKMORE TIBBIE 178U 1441456
 BROOKMORE TIBBIE 122P

S A F STRATEGY 9015 AMF CAF NHF DDF
 BUSHES LADY LA BELLE 457
 BUSHES GRAND DESIGN AMF CAF NHF DDF
 BROOKMORE TIBBIE 51M

| ACT. BW | ACT. WW | ADJ. 205 | ADJ. 365 | EPDS | | | | |
|---------|---------|----------|----------|----------|---------|----------|---------|-----|
| | | | | BW | WW | YW | MILK | TM |
| 88 | 819 | 705 | 1407 | +4.0 38% | +61 29% | +101 24% | +22 22% | +53 |

40

BROOKMORE PIONEER 107B

MALE JVJ 107B 1800591 FEBRUARY 06 2014

S A V FINAL ANSWER 0035 AMF CAF NHF DDF
S A V PIONEER 7301 AMF CAF NHF DDF 1481377
 S A V BLACKBIRD 5297 CAC

SITZ TRAVELER 8180 AMF CAF NHF DDF
 S A V EMULOUS 8145 CAF
 BOYD NEW DAY 8005 AMF CAF NHF DDF
 S A V BLACKBIRD 1082 CAC

| CARCASS | |
|---------|-------|
| MARB | 5.10 |
| BF | 5.71 |
| REA | 13.04 |
| %LMY | 63.50 |

S A V 004 DENSITY 4336 AMF CAF NHF DDF
BROOKMORE BELLA 144U 1441362
 BROOKMORE BELLA 114M

S A V 8180 TRAVELER 004 DMF DWF AMF CAF NHF OSF DDF
 S A V MAY 7238 CAF DDF
 O G L BATTLE CRY 427 128 DDF
 BROOKMORE BELLA 30E

| ACT. BW | ACT. WW | ADJ. 205 | ADJ. 365 | EPDS | | | | |
|---------|---------|----------|----------|----------|---------|---------|---------|-----|
| | | | | BW | WW | YW | MILK | TM |
| 90 | 808 | 703 | 1319 | +3.6 38% | +53 29% | +93 24% | +22 22% | +49 |

41

BROOKMORE PIONEER 123B

MALE JVJ 123B 1800516 FEBRUARY 13 2014

S A V FINAL ANSWER 0035 AMF CAF NHF DDF
S A V PIONEER 7301 AMF CAF NHF DDF 1481377
 S A V BLACKBIRD 5297 CAC

SITZ TRAVELER 8180 AMF CAF NHF DDF
 S A V EMULOUS 8145 CAF
 BOYD NEW DAY 8005 AMF CAF NHF DDF
 S A V BLACKBIRD 1082 CAC

| CARCASS | |
|---------|-------|
| MARB | 5.05 |
| BF | 5.71 |
| REA | 12.32 |
| %LMY | 62.92 |

MVF STOCKMAN 45H
BROOKMORE HEROINE 59R 1293238
 BROOKMORE HEROINE 23K

TC STOCKMAN 365 DDF
 DODSWOOD ENCHANTRESS MAX-90
 V D A R LUCYS BOY AMF CAF NHF DDF
 BROOKMORE HEROINE 168H

| ACT. BW | ACT. WW | ADJ. 205 | ADJ. 365 | EPDS | | | | |
|---------|---------|----------|----------|----------|---------|---------|---------|-----|
| | | | | BW | WW | YW | MILK | TM |
| 80 | 705 | 630 | 1250 | +1.8 38% | +44 29% | +81 24% | +21 23% | +43 |

Can't make it to the sale?
Internet Bidding Available.

To view this sale visit www.dlms.ca, Fill out the registration form located under registration and sign-up for your free user account and select a username and password.

BIDDERS - To be approved as a bidder, Log in to dlms.ca and click BUYER APPROVAL tab, select the sale you are interested in bidding at and click sign up.

For more information
 Call DLMS Reps:

Whitney Bosovich 780.991-3025
 Sheldon Wilcox 780.349.1680





LOT 42 - BROOKMORE ZORZAL 84B



LOT 44 - BROOKMORE ZORZAL 68B

42

BROOKMORE ZORZAL 84B

MALE JVJ 84B 1800600 JANUARY 31 2014

TRES MARIAS 6301 ZORZAL
WAF ZORZAL 321U AMF CAF NHF OSF **1485949**
 TRES MARIAS 6582 CUMELEN 5632

TRES MARIAS 5887 HORNERO
 TRES MARIAS 4850 WIND EXT
 TRES MARIAS 5837 CUMELEN
 TRES MARIAS 5632 CHAPAR 5026

| CARCASS | |
|---------|-------|
| MARB | 5.85 |
| BF | 8.59 |
| REA | 13.16 |
| %LMY | 60.66 |

BROOKMORE AVENGER 42P
BROOKMORE TIBBIE 292U 1441408
 BROOKMORE TIBBIE 69N

PF 7215 AVENGER 0232
 BROOKMORE PRINCESS 59G
 G D A UNIVERSE 726G
 BROOKMORE TIBBIE 73K

| ACT. BW | ACT. WW | ADJ. 205 | ADJ. 365 | EPDS | | | | | | | | |
|---------|---------|----------|----------|------|-----|-----|------|-----|-----|----|-----|-----|
| | | | | BW | WW | YW | MILK | TM | | | | |
| 86 | 760 | 648 | 1368 | +4.6 | 36% | +42 | 27% | +68 | 20% | +6 | 12% | +27 |

44

BROOKMORE ZORZAL 68B

MALE JVJ 68B 1800540 JANUARY 28 2014

TRES MARIAS 6301 ZORZAL
WAF ZORZAL 321U AMF CAF NHF OSF **1485949**
 TRES MARIAS 6582 CUMELEN 5632

TRES MARIAS 5887 HORNERO
 TRES MARIAS 4850 WIND EXT
 TRES MARIAS 5837 CUMELEN
 TRES MARIAS 5632 CHAPAR 5026

| CARCASS | |
|---------|-------|
| MARB | 4.80 |
| BF | 9.54 |
| REA | 12.76 |
| %LMY | 59.36 |

L T 598 BANDO 9074 AMF CAF NHF DDF
BROOKMORE LADY JANE 35S 1321699
 BROOKMORE LADY JANE 250P

S A F 598 BANDO 5175 AMF CAC DDF
 MILL COULEE BARBARA K 323
 MVF PERFECT BLEND 32H
 BROOKMORE LADY JANE 137L

| ACT. BW | ACT. WW | ADJ. 205 | ADJ. 365 | EPDS | | | | | | | | |
|---------|---------|----------|----------|------|-----|-----|------|-----|-----|-----|-----|-----|
| | | | | BW | WW | YW | MILK | TM | | | | |
| 100 | 830 | 701 | 1521 | +5.3 | 37% | +40 | 28% | +65 | 22% | +10 | 14% | +30 |

43

BROOKMORE ZORZAL 30B

MALE JVJ 30B 1800586 TWIN JANUARY 20 2014

TRES MARIAS 6301 ZORZAL
WAF ZORZAL 321U AMF CAF NHF OSF **1485949**
 TRES MARIAS 6582 CUMELEN 5632

TRES MARIAS 5887 HORNERO
 TRES MARIAS 4850 WIND EXT
 TRES MARIAS 5837 CUMELEN
 TRES MARIAS 5632 CHAPAR 5026

| CARCASS | |
|---------|-------|
| MARB | 5.70 |
| BF | 9.54 |
| REA | 14.50 |
| %LMY | 60.78 |

S A V NET WORTH 4200 AMF CAF NHF DDF
BROOKMORE LENLOCK 64U 1441488
 BROOKMORE LENLOCK 93R

S A V 8180 TRAVELER 004 DMF DMF AMF CAF NHF OSF DDF
 S A V MAY 2410
 W C C SPECIAL DESIGN L309 AMF CAF NHF DDF
 BROOKMORE LENLOCK 140K

| ACT. BW | ACT. WW | ADJ. 205 | ADJ. 365 | EPDS | | | | | | | | |
|---------|---------|----------|----------|------|----|-----|------|-----|---|----|---|-----|
| | | | | BW | WW | YW | MILK | TM | | | | |
| 70 | 790 | 644 | 1354 | +4.8 | P | +43 | P | +67 | P | +7 | P | +28 |

45

BROOKMORE ZORZAL 65B

MALE JVJ 65B 1800525 TWIN JANUARY 27 2014

TRES MARIAS 6301 ZORZAL
WAF ZORZAL 321U AMF CAF NHF OSF **1485949**
 TRES MARIAS 6582 CUMELEN 5632

TRES MARIAS 5887 HORNERO
 TRES MARIAS 4850 WIND EXT
 TRES MARIAS 5837 CUMELEN
 TRES MARIAS 5632 CHAPAR 5026

| CARCASS | |
|---------|-------|
| MARB | 5.35 |
| BF | 7.64 |
| REA | 11.59 |
| %LMY | 60.36 |

BROOKMORE BANDO 5175 9N
BROOKMORE QUEEN 263R 1310476
 BROOKMORE QUEEN 42L

S A F 598 BANDO 5175 AMF CAC DDF
 BROOKMORE HEROINE 126H
 O G L BATTLE CRY 427 128 DDF
 KDR QUEEN 1505

| ACT. BW | ACT. WW | ADJ. 205 | ADJ. 365 | EPDS | | | | | | | | |
|---------|---------|----------|----------|------|----|-----|------|-----|---|-----|---|-----|
| | | | | BW | WW | YW | MILK | TM | | | | |
| 60 | 688 | 575 | 1199 | +2.7 | P | +36 | P | +54 | P | +12 | P | +29 |



WAF ZORZAL 321U

BW +3.8 WW +38 YW +50 Milk +0 TM +19 SC +0.02

BW: 98 lbs. Adj. 205D: 771 lbs. Adj. 365D: 1309 lbs.

Outcross genetics from Argentina, Zorzal was bred by Tres Marias, the top Angus herd in South America, 17 times breeder of the year award winner. Tres Marias 6301 Zorzal, the sire of Zorzal 321U, was Grand Champion Bull at Palermo, South America's biggest show in 2004 and sired the Palermo Grand Champion bulls in 2006, 2008 and 2010, and the Grand Champion Females at Palermo in 2008 and 2012.

10 SONS SELL

46

BROOKMORE ZORZAL 47B

MALE JVJ 47B 1800613 JANUARY 24 2014

TRES MARIAS 6301 ZORZAL
WAF ZORZAL 321U AMF CAF NHF OSF 1485949
TRES MARIAS 6582 CUMELLEN 5632

TRES MARIAS 5887 HORNERO
TRES MARIAS 4850 WIND EXT
TRES MARIAS 5837 CUMELLEN
TRES MARIAS 5632 CHAPAR 5026

| CARCASS | |
|---------|-------|
| MARB | 5.00 |
| BF | 6.69 |
| REA | 14.91 |
| %LMY | 64.02 |

SITZ ALLIANCE 6595 DMF AMF CAF NHF DDF
BROOKMORE PRINCESS 187W 1513170
BROOKMORE PRINCESS 95K

SITZ TRAVELER 8180 AMF CAF NHF DDF
SITZ BARBARAMERE JET 2698
DAVIS MILLENNIUM 7518
BROOKMORE PRINCESS 57Z

| ACT. BW | ACT. WW | ADJ. 205 | ADJ. 365 | EPDS | | | | |
|---------|---------|----------|----------|----------|---------|---------|--------|-----|
| | | | | BW | WW | YW | MILK | TM |
| 90 | 850 | 706 | 1526 | +4.3 37% | +47 27% | +72 21% | +9 13% | +33 |



LOT 46 - BROOKMORE ZORZAL 47B

47

BROOKMORE ZORZAL 73B

MALE JVJ 73B 1800396 JANUARY 29 2014

TRES MARIAS 6301 ZORZAL
WAF ZORZAL 321U AMF CAF NHF OSF 1485949
TRES MARIAS 6582 CUMELLEN 5632

TRES MARIAS 5887 HORNERO
TRES MARIAS 4850 WIND EXT
TRES MARIAS 5837 CUMELLEN
TRES MARIAS 5632 CHAPAR 5026

| CARCASS | |
|---------|-------|
| MARB | 4.80 |
| BF | 6.22 |
| REA | 12.06 |
| %LMY | 62.19 |

BON VIEW NEW DESIGN 878 AMF CAF NHF DDF
BROOKMORE ELBA 1N 1210797
MVV ELBA 45L

B/R NEW DESIGN 036 AMF CAF NHF DDC
BON VIEW GAMMER 85 CAC
G D A R ROLLS ROYCE 203
HOMESTEADER ELBA 8C

| ACT. BW | ACT. WW | ADJ. 205 | ADJ. 365 | EPDS | | | | |
|---------|---------|----------|----------|----------|---------|---------|---------|-----|
| | | | | BW | WW | YW | MILK | TM |
| 86 | 804 | 707 | 1465 | +2.5 37% | +41 28% | +58 22% | +10 13% | +31 |

50

BROOKMORE ZORZAL 124B

MALE JVJ 124B 1809960 FEBRUARY 13 2014

TRES MARIAS 6301 ZORZAL
WAF ZORZAL 321U AMF CAF NHF OSF 1485949
TRES MARIAS 6582 CUMELLEN 5632

TRES MARIAS 5887 HORNERO
TRES MARIAS 4850 WIND EXT
TRES MARIAS 5837 CUMELLEN
TRES MARIAS 5632 CHAPAR 5026

| CARCASS | |
|---------|-------|
| MARB | 4.70 |
| BF | 7.62 |
| REA | 12.10 |
| %LMY | 60.80 |

S A V 004 DENSITY 4336 AMF CAF NHF DDF
BROOKMORE TIBBIE 149T 1375796
BROOKMORE TIBBIE 73K

S A V 8180 TRAVELER 004 DMF DMF AMF CAF NHF OSF DDF
S A V MAY 7238 CAF DDF
DAVIS MILLENNIUM 7518
BROOKMORE TIBBIE 38E

| ACT. BW | ACT. WW | ADJ. 205 | ADJ. 365 | EPDS | | | | |
|---------|---------|----------|----------|----------|---------|---------|---------|-----|
| | | | | BW | WW | YW | MILK | TM |
| 100 | 770 | 689 | 1297 | +6.8 37% | +42 28% | +64 21% | +10 14% | +31 |

48

BROOKMORE ZORZAL 116B

MALE JVJ 116B 1800604 FEBRUARY 08 2014

TRES MARIAS 6301 ZORZAL
WAF ZORZAL 321U AMF CAF NHF OSF 1485949
TRES MARIAS 6582 CUMELLEN 5632

TRES MARIAS 5887 HORNERO
TRES MARIAS 4850 WIND EXT
TRES MARIAS 5837 CUMELLEN
TRES MARIAS 5632 CHAPAR 5026

| CARCASS | |
|---------|-------|
| MARB | 5.00 |
| BF | 7.64 |
| REA | 13.01 |
| %LMY | 61.51 |

S A V 004 DENSITY 4336 AMF CAF NHF DDF
BROOKMORE TIBBIE 77W 1513153
BROOKMORE TIBBIE 196H

S A V 8180 TRAVELER 004 DMF DMF AMF CAF NHF OSF DDF
S A V MAY 7238 CAF DDF
EBON HILL EXTRA GOLD 31'95
BROOKMORE TIBBIE 93F

| ACT. BW | ACT. WW | ADJ. 205 | ADJ. 365 | EPDS | | | | |
|---------|---------|----------|----------|----------|---------|---------|---------|-----|
| | | | | BW | WW | YW | MILK | TM |
| 100 | 907 | 795 | 1513 | +5.6 36% | +50 27% | +74 21% | +10 13% | +35 |

51

BROOKMORE ZORZAL 64B

MALE JVJ 64B 1827815 JANUARY 27 2014

TRES MARIAS 6301 ZORZAL
WAF ZORZAL 321U AMF CAF NHF OSF 1485949
TRES MARIAS 6582 CUMELLEN 5632

TRES MARIAS 5887 HORNERO
TRES MARIAS 4850 WIND EXT
TRES MARIAS 5837 CUMELLEN
TRES MARIAS 5632 CHAPAR 5026

| CARCASS | |
|---------|-------|
| MARB | 4.70 |
| BF | 6.67 |
| REA | 11.79 |
| %LMY | 61.51 |

S A F 598 BANDO 5175 AMF CAC DDF
BROOKMORE ERICETTE 238R CAF 1293349
BROOKMORE ERICETTE 135M

BON VIEW BANDO 598 AMF CAC DDF
S A F ROYAL LASS 1002
BENCHMARK MAGIC MAN 007
MVV ERICETTE 62J

| ACT. BW | ACT. WW | ADJ. 205 | ADJ. 365 | EPDS | | | | |
|---------|---------|----------|----------|---------|--------|--------|------|-----|
| | | | | BW | WW | YW | MILK | TM |
| 82 | 783 | 657 | 1461 | +2.5 P+ | +37 P+ | +72 P+ | +8 P | +28 |

49

BROOKMORE ZORZAL 119B

MALE JVJ 119B 1800740 FEBRUARY 09 2014

TRES MARIAS 6301 ZORZAL
WAF ZORZAL 321U AMF CAF NHF OSF 1485949
TRES MARIAS 6582 CUMELLEN 5632

TRES MARIAS 5887 HORNERO
TRES MARIAS 4850 WIND EXT
TRES MARIAS 5837 CUMELLEN
TRES MARIAS 5632 CHAPAR 5026

| CARCASS | |
|---------|-------|
| MARB | 5.20 |
| BF | 7.62 |
| REA | 11.70 |
| %LMY | 60.47 |

BROOKMORE NEUTRON 72R
BROOKMORE ENCHANTRESS 229Y 1603757
BROOKMORE ENCHANTRESS 175S

S A NEUTRON 377 AMF CAF NHF DDF
BROOKMORE TIBBIE 57M
TC FOREMAN 016 DDF
BROOKMORE ENCHANTRESS 190H

| ACT. BW | ACT. WW | ADJ. 205 | ADJ. 365 | EPDS | | | | |
|---------|---------|----------|----------|----------|---------|---------|--------|-----|
| | | | | BW | WW | YW | MILK | TM |
| 70 | 705 | 657 | 1257 | +1.8 36% | +41 26% | +69 20% | +9 11% | +30 |

**WE STAND
BEHIND OUR BULLS**
All bulls are semen tested
& breeding soundness
evaluated



LOT 52

**BROOKMORE
ABERDEEN
127B**

52

BROOKMORE ABERDEEN 127B

MALE JVJ 127B 1800622 FEBRUARY 14 2014

C R A BEXTOR 872 5205 608 AMF CAF NHF DDF
TC ABERDEEN 759 AMF CAF NHF DDF 1485453
TC BLACKBIRD 4034 CAF

S A V FINAL ANSWER 0035 AMF CAF NHF DDF
BROOKMORE TIBBIE 34X 1558151
BROOKMORE TIBBIE 115K

B A R EXT TRAVELER 205 DMF AMF CAF NHF DDF
CRA LADY JAYE 608 498 S EASY
BON VIEW NEW DESIGN 208 AMF CAC NHF DDF
TC BLACKBIRD 1013 DDF

SITZ TRAVELER 8180 AMF CAF NHF DDF
S A V EMULOUS 8145 CAF
DAVIS MILLENNIUM 7518
MVHF TIBBIE 5Z

| CARCASS | |
|---------|-------|
| MARB | 5.55 |
| BF | 6.67 |
| REA | 14.06 |
| %LMY | 63.36 |

| ACT. BW | ACT. WW | ADJ. 205 | ADJ. 365 | EPDS | | | | | | | | |
|---------|---------|----------|----------|------|-----|-----|------|-----|-----|-----|-----|-----|
| | | | | BW | WW | YW | MILK | TM | | | | |
| 78 | 780 | 714 | 1396 | +1.0 | 36% | +55 | 28% | +92 | 23% | +24 | 22% | +52 |



LOT 53 - BROOKMORE ABERDEEN 3B

53

BROOKMORE ABERDEEN 3B

MALE JVJ 3B 1800757 JANUARY 07 2014

C R A BEXTOR 872 5205 608 AMF CAF NHF DDF
TC ABERDEEN 759 AMF CAF NHF DDF 1485453
TC BLACKBIRD 4034 CAF

SITZ UPWARD 307R DMF AMF CAF NHF DDF
BROOKMORE ERICETTE 124Z 1666843
BROOKMORE ERICETTE 135M

B A R EXT TRAVELER 205 DMF AMF CAF NHF DDF
CRA LADY JAYE 608 498 S EASY
BON VIEW NEW DESIGN 208 AMF CAC NHF DDF
TC BLACKBIRD 1013 DDF

CONNELLY ONWARD DMF AMF CAF NHF DDF
SITZ HENRIETTA PRIDE 81M
BENCHMARK MAGIC MAN 007
MVF ERICETTE 62J

| CARCASS | |
|---------|-------|
| MARB | 5.30 |
| BF | 5.27 |
| REA | 13.01 |
| %LMY | 63.93 |

| ACT. BW | ACT. WW | ADJ. 205 | ADJ. 365 | EPDS | | | | | | | | |
|---------|---------|----------|----------|------|-----|-----|------|-----|-----|-----|-----|-----|
| | | | | BW | WW | YW | MILK | TM | | | | |
| 76 | 798 | 698 | 1402 | +2.0 | 37% | +54 | 28% | +98 | 23% | +28 | 21% | +55 |

TC ABERDEEN 759

BW +0.8 WW +56 YW +101 Milk +31 TM +59 SC: +0.57

TC Aberdeen 759 sires low birth weight, attractive structurally correct cattle. A breed leader in maternal traits, docility and udder quality. An Elite Carcass Merit sire, a bull with performance, style and calving ease.

7 SONS & 4 GRANDSONS SELL





LOT 54 - BROOKMORE ABERDEEN 140B



LOT 57 - BROOKMORE ABERDEEN 49B

54 BROOKMORE ABERDEEN 140B

MALE JVJ 140B 1800683 FEBRUARY 22 2014

C R A BEXTOR 872 5205 608 AMF CAF NHF DDF
TC ABERDEEN 759 AMF CAF NHF DDF **1485453**
 TC BLACKBIRD 4034 CAF

S A V FINAL ANSWER 0035 AMF CAF NHF DDF
BROOKMORE KARAMA 83Y 1603636
 BROOKMORE KARAMA 58P

B A R EXT TRAVELER 205 DMF AMF CAF NHF DDF
 CRA LADY JAYE 608 498 S EASY
 BON VIEW NEW DESIGN 208 AMF CAC NHF DDF
 TC BLACKBIRD 1013 DDF

SITZ TRAVELER 8180 AMF CAF NHF DDF
 S A V EMULOUS 8145 CAF
 MVF STOCKMAN 45H
 BROOKMORE KARAMA 130E

| CARCASS | |
|---------|-------|
| MARB | 5.20 |
| BF | 8.18 |
| REA | 13.62 |
| %LMY | 61.46 |

| ACT. BW | ACT. WW | ADJ. 205 | ADJ. 365 | EPDS | | | | | | | | |
|---------|---------|----------|----------|------|-----|-----|------|-----|-----|-----|-----|-----|
| | | | | BW | WW | YW | MILK | TM | | | | |
| 78 | 734 | 716 | 1468 | +1.5 | 37% | +52 | 28% | +92 | 24% | +25 | 22% | +51 |

57 BROOKMORE ABERDEEN 49B

MALE JVJ 49B 1800671 TWIN JANUARY 24 2014

C R A BEXTOR 872 5205 608 AMF CAF NHF DDF
TC ABERDEEN 759 AMF CAF NHF DDF **1485453**
 TC BLACKBIRD 4034 CAF

S A V PIONEER 7301 AMF CAF NHF DDF
BROOKMORE ALETA 45Y 1603714
 BROOKMORE ALETA 12R

B A R EXT TRAVELER 205 DMF AMF CAF NHF DDF
 CRA LADY JAYE 608 498 S EASY
 BON VIEW NEW DESIGN 208 AMF CAC NHF DDF
 TC BLACKBIRD 1013 DDF

S A V FINAL ANSWER 0035 AMF CAF NHF DDF
 S A V BLACKBIRD 5297 CAC
 BUSHS GRAND DESIGN AMF CAF NHF DDF
 BROOKMORE ALETA 60N

| CARCASS | |
|---------|-------|
| MARB | 5.00 |
| BF | 7.62 |
| REA | 14.74 |
| %LMY | 62.94 |

| ACT. BW | ACT. WW | ADJ. 205 | ADJ. 365 | EPDS | | | | | | | | |
|---------|---------|----------|----------|------|----|-----|------|------|---|-----|---|-----|
| | | | | BW | WW | YW | MILK | TM | | | | |
| 62 | 770 | 674 | 1314 | +2.4 | P | +56 | P | +100 | P | +30 | P | +57 |

55 BROOKMORE ABERDEEN 48B

MALE JVJ 48B 1800670 TWIN JANUARY 24 2014

C R A BEXTOR 872 5205 608 AMF CAF NHF DDF
TC ABERDEEN 759 AMF CAF NHF DDF **1485453**
 TC BLACKBIRD 4034 CAF

S A V PIONEER 7301 AMF CAF NHF DDF
BROOKMORE ALETA 45Y 1603714
 BROOKMORE ALETA 12R

B A R EXT TRAVELER 205 DMF AMF CAF NHF DDF
 CRA LADY JAYE 608 498 S EASY
 BON VIEW NEW DESIGN 208 AMF CAC NHF DDF
 TC BLACKBIRD 1013 DDF

S A V FINAL ANSWER 0035 AMF CAF NHF DDF
 S A V BLACKBIRD 5297 CAC
 BUSHS GRAND DESIGN AMF CAF NHF DDF
 BROOKMORE ALETA 60N

| CARCASS | |
|---------|-------|
| MARB | 4.95 |
| BF | 6.67 |
| REA | 12.19 |
| %LMY | 61.84 |

| ACT. BW | ACT. WW | ADJ. 205 | ADJ. 365 | EPDS | | | | | | | | |
|---------|---------|----------|----------|------|----|-----|------|------|---|-----|---|-----|
| | | | | BW | WW | YW | MILK | TM | | | | |
| 60 | 792 | 691 | 1127 | +2.4 | P | +56 | P | +100 | P | +30 | P | +57 |

58 BROOKMORE ABERDEEN 117B

MALE JVJ 117B 1800519 FEBRUARY 09 2014

C R A BEXTOR 872 5205 608 AMF CAF NHF DDF
TC ABERDEEN 759 AMF CAF NHF DDF **1485453**
 TC BLACKBIRD 4034 CAF

MVF STOCKMAN 45H
BROOKMORE KARAMA 76R 1293169
 BROOKMORE KARAMA 130E

B A R EXT TRAVELER 205 DMF AMF CAF NHF DDF
 CRA LADY JAYE 608 498 S EASY
 BON VIEW NEW DESIGN 208 AMF CAC NHF DDF
 TC BLACKBIRD 1013 DDF

TC STOCKMAN 365 DDF
 DODSWOOD ENCHANTRESS MAX-90
 EARLY SUNSET EXTRA 30Z
 BROOKMORE KARAMA 70T

| CARCASS | |
|---------|-------|
| MARB | 5.00 |
| BF | 6.22 |
| REA | 12.98 |
| %LMY | 62.94 |

| ACT. BW | ACT. WW | ADJ. 205 | ADJ. 365 | EPDS | | | | | | | | |
|---------|---------|----------|----------|------|-----|-----|------|-----|-----|-----|-----|-----|
| | | | | BW | WW | YW | MILK | TM | | | | |
| 78 | 786 | 690 | 1300 | +1.7 | 38% | +47 | 29% | +87 | 24% | +22 | 23% | +46 |

56 BROOKMORE ABERDEEN 77B

MALE JVJ 77B 1800747 JANUARY 30 2014

C R A BEXTOR 872 5205 608 AMF CAF NHF DDF
TC ABERDEEN 759 AMF CAF NHF DDF **1485453**
 TC BLACKBIRD 4034 CAF

S A V PIONEER 7301 AMF CAF NHF DDF
BROOKMORE ALETA 43Z 1667276
 BROOKMORE ALETA 234W

B A R EXT TRAVELER 205 DMF AMF CAF NHF DDF
 CRA LADY JAYE 608 498 S EASY
 BON VIEW NEW DESIGN 208 AMF CAC NHF DDF
 TC BLACKBIRD 1013 DDF

S A V FINAL ANSWER 0035 AMF CAF NHF DDF
 S A V BLACKBIRD 5297 CAC
 MOHNEN DYNAMITE 1356 AMF CAF NHF DDF
 BROOKMORE ALETA 3P

| CARCASS | |
|---------|-------|
| MARB | 5.60 |
| BF | 5.75 |
| REA | 12.66 |
| %LMY | 63.16 |

| ACT. BW | ACT. WW | ADJ. 205 | ADJ. 365 | EPDS | | | | | | | | |
|---------|---------|----------|----------|------|-----|-----|------|-----|-----|-----|-----|-----|
| | | | | BW | WW | YW | MILK | TM | | | | |
| 80 | 616 | 599 | 1327 | +2.9 | 37% | +44 | 28% | +90 | 24% | +23 | 21% | +45 |

59 BROOKMORE ABERDEEN 151B

MALE JVJ 151B 1800733 FEBRUARY 27 2014

C R A BEXTOR 872 5205 608 AMF CAF NHF DDF
TC ABERDEEN 759 AMF CAF NHF DDF **1485453**
 TC BLACKBIRD 4034 CAF

SITZ UPWARD 307R DMF AMF CAF NHF DDF
BROOKMORE TIBBIE 185Y 1603656
 BROOKMORE TIBBIE 122P

B A R EXT TRAVELER 205 DMF AMF CAF NHF DDF
 CRA LADY JAYE 608 498 S EASY
 BON VIEW NEW DESIGN 208 AMF CAC NHF DDF
 TC BLACKBIRD 1013 DDF

CONNELLY ONWARD DMF AMF CAF NHF DDF
 SITZ HENRIETTA PRIDE 81M
 BUSHS GRAND DESIGN AMF CAF NHF DDF
 BROOKMORE TIBBIE 51M

| CARCASS | |
|---------|-------|
| MARB | 6.00 |
| BF | 7.24 |
| REA | 12.84 |
| %LMY | 61.78 |

| ACT. BW | ACT. WW | ADJ. 205 | ADJ. 365 | EPDS | | | | | | | | |
|---------|---------|----------|----------|------|-----|-----|------|-----|-----|-----|-----|-----|
| | | | | BW | WW | YW | MILK | TM | | | | |
| 90 | 744 | 740 | 1428 | +4.2 | 34% | +51 | 23% | +88 | 15% | +24 | 12% | +50 |



LOT 60 - BROOKMORE ABERDEEN 85B



LOT 62 - BROOKMORE ABERDEEN 178B

60 BROOKMORE ABERDEEN 85B

MALE JVJ 85B 1800759 JANUARY 31 2014

TC ABERDEEN 759 AMF CAF NHF DDF
BROOKMORE ABERDEEN 8Y 1603986
BROOKMORE PRINCESS 135W

C R A BEXTOR 872 5205 608 AMF CAF NHF DDF
TC BLACKBIRD 4034 CAF
S A V 004 DENSITY 4336 AMF CAF NHF DDF
BROOKMORE PRINCESS 12N

| CARCASS | |
|---------|-------|
| MARB | 5.00 |
| BF | 7.62 |
| REA | 12.77 |
| %LMY | 61.34 |

S A V BISMARCK 5682 AMF CAF NHF DDF
BROOKMORE QUEEN 138Z 1666964
BROOKMORE QUEEN 263R

G A R GRID MAKER AMF CAF NHF DDF
S A V ABIGALE 0451
BROOKMORE BANDO 5175 9N
BROOKMORE QUEEN 42L

| ACT. BW | ACT. WW | ADJ. 205 | ADJ. 365 | EPDS | | | | | | | | |
|---------|---------|----------|----------|------|-----|-----|------|-----|-----|-----|-----|-----|
| | | | | BW | WW | YW | MILK | TM | | | | |
| 76 | 784 | 740 | 1492 | +1.1 | 34% | +51 | 23% | +86 | 15% | +24 | 11% | +50 |

62 BROOKMORE ABERDEEN 178B

MALE JVJ 178B 1809962 MARCH 14 2014

TC ABERDEEN 759 AMF CAF NHF DDF
BROOKMORE ABERDEEN 8Y 1603986
BROOKMORE PRINCESS 135W

C R A BEXTOR 872 5205 608 AMF CAF NHF DDF
TC BLACKBIRD 4034 CAF
S A V 004 DENSITY 4336 AMF CAF NHF DDF
BROOKMORE PRINCESS 12N

| CARCASS | |
|---------|-------|
| MARB | 5.00 |
| BF | 5.24 |
| REA | 11.12 |
| %LMY | 62.43 |

MOHNEN DYNAMITE 1356 AMF CAF NHF DDF
BROOKMORE MAIDEN 176Z 1667050
BROOKMORE MAIDEN 156T CAF

BALDRIDGE KABOOM K243 KCF CAF
MOHNEN JILT 910 AMF CAF DDF
S A F 598 BANDO 5175 AMF CAF DDF
BROOKMORE MAIDEN 48M

| ACT. BW | ACT. WW | ADJ. 205 | WT. 1/16/15 | EPDS | | | | | | | | |
|---------|---------|----------|-------------|------|-----|-----|------|-----|-----|-----|-----|-----|
| | | | | BW | WW | YW | MILK | TM | | | | |
| 80 | 665 | 742 | 1040 | +2.8 | 34% | +53 | 23% | +98 | 14% | +21 | 11% | +48 |

61 BROOKMORE ABERDEEN 169B

MALE JVJ 169B 1800755 MARCH 11 2014

TC ABERDEEN 759 AMF CAF NHF DDF
BROOKMORE ABERDEEN 8Y 1603986
BROOKMORE PRINCESS 135W

C R A BEXTOR 872 5205 608 AMF CAF NHF DDF
TC BLACKBIRD 4034 CAF
S A V 004 DENSITY 4336 AMF CAF NHF DDF
BROOKMORE PRINCESS 12N

| CARCASS | |
|---------|-------|
| MARB | 4.65 |
| BF | 4.80 |
| REA | 13.62 |
| %LMY | 64.91 |

S A V BISMARCK 5682 AMF CAF NHF DDF
BROOKMORE BELLA 88Z 1666874
BROOKMORE BELLA 43P

G A R GRID MAKER AMF CAF NHF DDF
S A V ABIGALE 0451
SITZ ALLIANCE 6595 DMF AMF CAF NHF DDF
BROOKMORE BELLA 125L

| ACT. BW | ACT. WW | ADJ. 205 | ADJ. 365 | EPDS | | | | | | | | |
|---------|---------|----------|----------|------|-----|-----|------|-----|-----|-----|-----|-----|
| | | | | BW | WW | YW | MILK | TM | | | | |
| 66 | 675 | 743 | 1305 | +0.5 | 34% | +52 | 23% | +89 | 15% | +22 | 12% | +48 |

*Brookmore Angus Bulls
Recommended for Heifers*

OUT OF FIRST CALF HEIFERS:
Lots 53, 60, 61, 63, 64 & 65

OUT OF COWS:
Lots 4, 7, 15, 23, 24, 26, 27, 28, 32, 33,
41, 49, 51, 52, 54, 55, 57, 58, 69 & 75

**BROOKMORE
WEANING WEIGHTS**

taken October 4, 2014

**20 YEARS!
CATTLEMAN'S
CONNECTION**

ANGUS BEEF?

ANGUS TAGS

For information contact:
Canadian Angus Association
1-866-571-8093

www.cdnangus.ca





LOT 63

**BROOKMORE
FOCUS 6B**



LOT 65 - BROOKMORE FOCUS 9B

63

BROOKMORE FOCUS 6B

MALE JVJ 6B 1800744 JANUARY 11 2014

MYTTY IN FOCUS AMF CAF NHF DDF
B P F SPECIAL FOCUS 504 DMF AMF CAF NHF DDF 1644193
B P F BLACK CASH 341

S A F FOCUS OF E R AMF CAF NHF DDF
MYTTY COUNTESS 906
J R SOMETHING SPECIAL AMF CAC NHF DDF
B P F BLACK CASH 944

| CARCASS | |
|---------|-------|
| MARB | 5.50 |
| BF | 5.75 |
| REA | 15.40 |
| %LMY | 65.39 |

S A V FINAL ANSWER 0035 AMF CAF NHF DDF
BROOKMORE RUBY 9Z 1667312
BROOKMORE RUBY 213X

SITZ TRAVELER 8180 AMF CAF NHF DDF
S A V EMULOUS 8145 CAF
S A V HERITAGE 6295 AMF CAF NHF DDF
BROOKMORE RUBY 178L

| ACT. BW | ACT. WW | ADJ. 205 | ADJ. 365 | EPDS | | | | | | | | |
|---------|---------|----------|----------|------|-----|-----|------|------|-----|-----|-----|-----|
| | | | | BW | WW | YW | MILK | TM | | | | |
| 78 | 877 | 768 | 1550 | +0.6 | 37% | +59 | 28% | +101 | 23% | +27 | 20% | +57 |

64

BROOKMORE FOCUS 2B

MALE JVJ 2B 1800754 JANUARY 07 2014

MYTTY IN FOCUS AMF CAF NHF DDF
B P F SPECIAL FOCUS 504 DMF AMF CAF NHF DDF 1644193
B P F BLACK CASH 341

S A F FOCUS OF E R AMF CAF NHF DDF
MYTTY COUNTESS 906
J R SOMETHING SPECIAL AMF CAC NHF DDF
B P F BLACK CASH 944

| CARCASS | |
|---------|-------|
| MARB | 5.15 |
| BF | 9.52 |
| REA | 12.72 |
| %LMY | 59.35 |

S A V PIONEER 7301 AMF CAF NHF DDF
BROOKMORE LUCY 75Z 1667260
BROOKMORE LUCY 138W

S A V FINAL ANSWER 0035 AMF CAF NHF DDF
S A V BLACKBIRD 5297 CAC
S A V HERITAGE 6295 AMF CAF NHF DDF
KEMBAR LUCY 16F

| ACT. BW | ACT. WW | ADJ. 205 | ADJ. 365 | EPDS | | | | | | | | |
|---------|---------|----------|----------|------|-----|-----|------|-----|-----|-----|-----|-----|
| | | | | BW | WW | YW | MILK | TM | | | | |
| 60 | 762 | 667 | 1253 | -1.3 | 37% | +50 | 28% | +92 | 23% | +26 | 20% | +51 |

65

BROOKMORE FOCUS 9B

MALE JVJ 9B 1800748 JANUARY 12 2014

MYTTY IN FOCUS AMF CAF NHF DDF
B P F SPECIAL FOCUS 504 DMF AMF CAF NHF DDF 1644193
B P F BLACK CASH 341

S A F FOCUS OF E R AMF CAF NHF DDF
MYTTY COUNTESS 906
J R SOMETHING SPECIAL AMF CAC NHF DDF
B P F BLACK CASH 944

| CARCASS | |
|---------|-------|
| MARB | 5.00 |
| BF | 10.48 |
| REA | 13.08 |
| %LMY | 58.67 |

SITZ UPWARD 307R DMF AMF CAF NHF DDF
BROOKMORE MAIDEN 48Z 1667263
BROOKMORE MAIDEN 147W

CONNELLY ONWARD DMF AMF CAF NHF DDF
SITZ HENRIETTA PRIDE 81M
S A V BISMARCK 5682 AMF CAF NHF DDF
BROOKMORE MAIDEN 156T CAF

| ACT. BW | ACT. WW | ADJ. 205 | ADJ. 365 | EPDS | | | | | | | | |
|---------|---------|----------|----------|------|-----|-----|------|------|-----|-----|-----|-----|
| | | | | BW | WW | YW | MILK | TM | | | | |
| 74 | 887 | 777 | 1353 | +0.3 | 37% | +65 | 28% | +111 | 23% | +33 | 20% | +66 |

B P F SPECIAL FOCUS 504

BW -1.2 WW +54 YW +96 Milk +30 TM +57 SC: +1.25
BW: 72 lbs. Adj. 205D: 769 lbs.

BPF Special Focus, proven calving ease that offers maternal strength, performance and carcass quality along with great phenotype, muscle thickness and fleshing ability with great structure.

3 SONS SELL





LOT 66 - BROOKMORE CHISEL 189B



LOT 67 - BROOKMORE CHISEL 195B

66

BROOKMORE CHISEL 189B

MALE JVJ 189B 1808738 MARCH 19 2014

S CHISUM 6175 AMF CAF NHF DDF
REMITALL F CHISELED 132Z 1670435
 REMINGTON BEAUTY 14U

S ALLIANCE 3313 AMF
 S GLORIA 464
 CUDLOBE YELLOWSTONE 80M
 F V LT BEAUTY 479N

| CARCASS | |
|---------|-------|
| MARB | 4.80 |
| BF | 6.67 |
| REA | 14.61 |
| %LMY | 63.81 |

S A V PIONEER 7301 AMF CAF NHF DDF
BROOKMORE LENLOCK 53Y 1603721
 BROOKMORE LENLOCK 93R

S A V FINAL ANSWER 0035 AMF CAF NHF DDF
 S A V BLACKBIRD 5297 CAC
 W C C SPECIAL DESIGN L309 AMF CAF NHF DDF
 BROOKMORE LENLOCK 140K

| ACT. BW | ACT. WW | ADJ. 205 | WT. 1/16/15 | EPDS | | | | |
|---------|---------|----------|-------------|----------|---------|---------|---------|-----|
| | | | | BW | WW | YW | MILK | TM |
| 82 | 722 | 779 | 1190 | +3.2 34% | +55 23% | +95 14% | +21 12% | +49 |

67

BROOKMORE CHISEL 195B

MALE JVJ 195B 1808739 MARCH 27 2014

S CHISUM 6175 AMF CAF NHF DDF
REMITALL F CHISELED 132Z 1670435
 REMINGTON BEAUTY 14U

S ALLIANCE 3313 AMF
 S GLORIA 464
 CUDLOBE YELLOWSTONE 80M
 F V LT BEAUTY 479N

| CARCASS | |
|---------|-------|
| MARB | 4.65 |
| BF | 6.67 |
| REA | 12.98 |
| %LMY | 62.48 |

TC ABERDEEN 759 AMF CAF NHF DDF
BROOKMORE MARY 43Y 1603955
 BROOKMORE MARY 230U

C R A BEXTOR 872 5205 608 AMF CAF NHF DDF
 TC BLACKBIRD 4034 CAF
 S A V 004 DENSITY 4336 AMF CAF NHF DDF
 BROOKMORE MARY 90M

| ACT. BW | ACT. WW | ADJ. 205 | WT. 1/16/15 | EPDS | | | | |
|---------|---------|----------|-------------|----------|---------|---------|---------|-----|
| | | | | BW | WW | YW | MILK | TM |
| 84 | 724 | 809 | 1155 | +2.6 34% | +55 23% | +97 14% | +25 12% | +53 |



LOT 68 - BROOKMORE CHISEL 177B

68

BROOKMORE CHISEL 177B

MALE JVJ 177B 1808733 MARCH 14 2014

S CHISUM 6175 AMF CAF NHF DDF
REMITALL F CHISELED 132Z 1670435
 REMINGTON BEAUTY 14U

S ALLIANCE 3313 AMF
 S GLORIA 464
 CUDLOBE YELLOWSTONE 80M
 F V LT BEAUTY 479N

| CARCASS | |
|---------|-------|
| MARB | 5.15 |
| BF | 9.52 |
| REA | 11.98 |
| %LMY | 58.75 |

SITZ UPWARD 307R DMF AMF CAF NHF DDF
BROOKMORE BELLA 182Y 1603838
 BROOKMORE BELLA 35T

CONNELY ONWARD DMF AMF CAF NHF DDF
 SITZ HENRIETTA PRIDE 81M
 B C MATRIX 4132 AMF CAF NHF DDF
 BROOKMORE BELLA 242R

| ACT. BW | ACT. WW | ADJ. 205 | WT. 1/16/15 | EPDS | | | | |
|---------|---------|----------|-------------|----------|---------|----------|---------|-----|
| | | | | BW | WW | YW | MILK | TM |
| 90 | 744 | 785 | 1170 | +3.4 34% | +59 23% | +102 14% | +22 12% | +52 |

REMITALL F CHISELED 132Z

BW +2.4 WW +50 YW +90 Milk +20 TM +45
 BW: 89 lbs. Adj. 205D: 893 lbs. Adj. 365D: 1414 lbs.

Remitall F Chiseled 132Z is a son of the Genex sire, S Chisum and out of a top Yellowstone daughter who was a donor female for Remitall and Soo Line. She has produced herd sires for Cudlobe, Brookmore and Lorenzon Farms in Illinois.

3 SONS SELL

Sire: S CHISUM





LOT 69
BROOKMORE
WARRIOR 150B



LOT 71
BROOKMORE
WARRIOR 157B

69 BROOKMORE WARRIOR 150B

MALE JVJ 150B 1800691 FEBRUARY 26 2014

REMITALL H RACHIS 21R AMF NHF OSF
REMITALL F WARRIOR 2W 1500423
REMITALL JANESEA 641S

REMITALL NIGHTHAWK 37N
HENDERSON MISSIE 32'02
JUSTAMERE 1118 CASH 665P
REMITALL JANESEA 107N

| CARCASS | |
|---------|-------|
| MARB | 5.10 |
| BF | 7.62 |
| REA | 13.79 |
| %LMY | 62.17 |

S A V PIONEER 7301 AMF CAF NHF DDF
BROOKMORE DAISY 84Y 1603597
BROOKMORE DAISY 153N

S A V FINAL ANSWER 0035 AMF CAF NHF DDF
S A V BLACKBIRD 5297 CAC
S A NEUTRON 377 AMF CAF NHF DDF
2J DAISY 12J

| ACT. BW | ACT. WW | ADJ. 205 | ADJ. 365 | EPDS | | | | | | | | |
|---------|---------|----------|----------|------|-----|-----|------|-----|-----|-----|-----|-----|
| | | | | BW | WW | YW | MILK | TM | | | | |
| 64 | 712 | 706 | 1312 | +0.1 | 35% | +44 | 24% | +84 | 16% | +20 | 12% | +42 |

71 BROOKMORE WARRIOR 157B

MALE JVJ 157B 1800732 MARCH 03 2014

REMITALL H RACHIS 21R AMF NHF OSF
REMITALL F WARRIOR 2W 1500423
REMITALL JANESEA 641S

REMITALL NIGHTHAWK 37N
HENDERSON MISSIE 32'02
JUSTAMERE 1118 CASH 665P
REMITALL JANESEA 107N

| CARCASS | |
|---------|-------|
| MARB | 4.75 |
| BF | 4.33 |
| REA | 13.88 |
| %LMY | 65.60 |

S A V PIONEER 7301 AMF CAF NHF DDF
BROOKMORE LADY JANE 184Y 1603580
BROOKMORE LADY JANE 190M

S A V FINAL ANSWER 0035 AMF CAF NHF DDF
S A V BLACKBIRD 5297 CAC
MVF PERFECT BLEND 32H
BROOKMORE LADY JANE 100J

| ACT. BW | ACT. WW | ADJ. 205 | ADJ. 365 | EPDS | | | | | | | | |
|---------|---------|----------|----------|------|-----|-----|------|-----|-----|-----|-----|-----|
| | | | | BW | WW | YW | MILK | TM | | | | |
| 98 | 776 | 782 | 1442 | +5.3 | 35% | +46 | 24% | +81 | 16% | +24 | 12% | +47 |

70 BROOKMORE WARRIOR 161B

MALE JVJ 161B 1800590 MARCH 05 2014

REMITALL H RACHIS 21R AMF NHF OSF
REMITALL F WARRIOR 2W 1500423
REMITALL JANESEA 641S

REMITALL NIGHTHAWK 37N
HENDERSON MISSIE 32'02
JUSTAMERE 1118 CASH 665P
REMITALL JANESEA 107N

| CARCASS | |
|---------|-------|
| MARB | 4.80 |
| BF | 10.49 |
| REA | 13.06 |
| %LMY | 58.64 |

S A V NET WORTH 4200 AMF CAF NHF DDF
BROOKMORE TIBBIE 132U 1441262
BROOKMORE TIBBIE 56G

S A V 8180 TRAVELER 004 DMF DWF AMF CAF NHF OSF DDF
S A V MAY 2410
MVS LIMITED EDITION 10E
BROOKMORE TIBBIE 38E

| ACT. BW | ACT. WW | ADJ. 205 | ADJ. 365 | EPDS | | | | | | | | |
|---------|---------|----------|----------|------|-----|-----|------|-----|-----|-----|-----|-----|
| | | | | BW | WW | YW | MILK | TM | | | | |
| 82 | 740 | 715 | 1435 | +3.1 | 35% | +44 | 25% | +79 | 16% | +18 | 13% | +40 |

72 BROOKMORE WARRIOR 171B

MALE JVJ 171B 1800593 MARCH 11 2014

REMITALL H RACHIS 21R AMF NHF OSF
REMITALL F WARRIOR 2W 1500423
REMITALL JANESEA 641S

REMITALL NIGHTHAWK 37N
HENDERSON MISSIE 32'02
JUSTAMERE 1118 CASH 665P
REMITALL JANESEA 107N

| CARCASS | |
|---------|-------|
| MARB | 5.65 |
| BF | 6.67 |
| REA | 12.87 |
| %LMY | 62.39 |

SITZ ALLIANCE 6595 DMF AMF CAF NHF DDF
BROOKMORE KARAMA 164U 1441446
BROOKMORE KARAMA 58P

SITZ TRAVELER 8180 AMF CAF NHF DDF
SITZ BARBARAMERE JET 2698
MVF STOCKMAN 45H
BROOKMORE KARAMA 130E

| ACT. BW | ACT. WW | ADJ. 205 | WT. 1/16/15 | EPDS | | | | | | | | |
|---------|---------|----------|-------------|------|-----|-----|------|-----|-----|-----|-----|-----|
| | | | | BW | WW | YW | MILK | TM | | | | |
| 90 | 607 | 602 | 1005 | +3.8 | 35% | +28 | 25% | +63 | 16% | +20 | 13% | +34 |

CATTLEMAN'S CONNECTION

*Join us for lunch
at 11:30 am*



LOT 73 - BROOKMORE ESCALADE 170B



LOT 75 - BROOKMORE ESCALADE 152B

73 BROOKMORE ESCALADE 170B

MALE JVJ 170B 1800616 MARCH 11 2014

MJ ESCALADE 2W AMF NHF
J SQUARE S ESCALADE 12Y 1601294
NORTHERN VIEW BLACKCAP 3U

REMITALL H RACHIS 21R AMF NHF OSF
REMITALL ANNIE 543T
NORTHERN VIEW QUANTUM 86P
NORTHERN VIEW BLACKCAP 30N

| CARCASS | |
|---------|-------|
| MARB | 6.20 |
| BF | 8.59 |
| REA | 12.45 |
| %LMY | 60.09 |

BROOKMORE DENSITY 111T
BROOKMORE ROSEBUD 263W 1536852
BROOKMORE ROSEBUD 36P

S A V 004 DENSITY 4336 AMF CAF NHF DDF
BROOKMORE LADY JANE 224N
BUSHES GRAND DESIGN AMF CAF NHF DDF
BROOKMORE ROSEBUD 72M

| ACT. BW | ACT. WW | ADJ. 205 | ADJ. 1/16/15 | EPDS | | | | | | | | |
|---------|---------|----------|--------------|------|-----|-----|------|-----|-----|-----|----|-----|
| | | | | BW | WW | YW | MILK | TM | | | | |
| 102 | 736 | 730 | 1102 | +5.3 | 34% | +44 | 22% | +77 | 12% | +20 | 9% | +42 |

75 BROOKMORE ESCALADE 152B

MALE JVJ 152B 1800587 FEBRUARY 28 2014

MJ ESCALADE 2W AMF NHF
J SQUARE S ESCALADE 12Y 1601294
NORTHERN VIEW BLACKCAP 3U

REMITALL H RACHIS 21R AMF NHF OSF
REMITALL ANNIE 543T
NORTHERN VIEW QUANTUM 86P
NORTHERN VIEW BLACKCAP 30N

| CARCASS | |
|---------|-------|
| MARB | 5.60 |
| BF | 5.71 |
| REA | 14.42 |
| %LMY | 64.62 |

S A V 004 DENSITY 4336 AMF CAF NHF DDF
BROOKMORE LADY JANE 82U 1441314
BROOKMORE LADY JANE 81L

S A V 8180 TRAVELER 004 DMF DMF AMF CAF NHF OSF DDF
S A V MAY 7238 CAF DDF
MVF PERFECT BLEND 32H
BROOKMORE LADY JANE 1J

| ACT. BW | ACT. WW | ADJ. 205 | ADJ. 365 | EPDS | | | | | | | | |
|---------|---------|----------|----------|------|-----|-----|------|-----|-----|-----|-----|-----|
| | | | | BW | WW | YW | MILK | TM | | | | |
| 80 | 707 | 670 | 1346 | +2.4 | 34% | +37 | 23% | +70 | 13% | +21 | 10% | +40 |

74 BROOKMORE ESCALADE 147B

MALE JVJ 147B 1800738 FEBRUARY 26 2014

MJ ESCALADE 2W AMF NHF
J SQUARE S ESCALADE 12Y 1601294
NORTHERN VIEW BLACKCAP 3U

REMITALL H RACHIS 21R AMF NHF OSF
REMITALL ANNIE 543T
NORTHERN VIEW QUANTUM 86P
NORTHERN VIEW BLACKCAP 30N

| CARCASS | |
|---------|-------|
| MARB | 4.60 |
| BF | 5.24 |
| REA | 12.90 |
| %LMY | 63.88 |

S A V BISMARCK 5682 AMF CAF NHF DDF
BROOKMORE TIBBIE 214Y 1633923
BROOKMORE TIBBIE 172R CAF

G A R GRID MAKER AMF CAF NHF DDF
S A V ABIGALE 0451
S A F 598 BANDO 5175 AMF CAC DDF
MVF TIBBIE 38H

| ACT. BW | ACT. WW | ADJ. 205 | ADJ. 365 | EPDS | | | | | | | | |
|---------|---------|----------|----------|------|-----|-----|------|-----|-----|-----|-----|-----|
| | | | | BW | WW | YW | MILK | TM | | | | |
| 82 | 764 | 756 | 1412 | +2.9 | 34% | +44 | 22% | +80 | 13% | +24 | 10% | +46 |

Wintering Policy

**WINTERING OF BULLS
IS FREE UNTIL APRIL 1ST, 2015**

We ask purchasers to state their intentions
for wintering at the time of settlement

*All bulls going back to the farm
MUST BE INSURED*



REMITALL H RACHIS 21R

BW +5.6 WW +64 YW +126 Milk +28 TM +60 SC: +1.07

BW: 78 lbs. Adj. 205D: 766 lbs. Adj. 365D: 1562 lbs.

Remitall H Rachis 21R was the 2007 Edmonton Farm Fair Supreme Champion Bull. Remitall F Warrior 2W has done an excellent job at Brookmore along with the Rachis grandson J Square S Escalade 12Y.

4 GRANDSONS & 3 GREAT-GRANDSONS SELL



AIREY CATTLE CO.

Barb & Ray Airey

BOX 922, RIVERS, MANITOBA R0K 1X0 (204) 566-2134

Barb Cell: (204) 761-1851 Ray Cell: (204) 724-3600

email: rbairey@hotmail.com



Ray, Barb
Terinda
& Nikoda

We are excited to be consigning our HBH and ARY bulls to the 20th Cattleman's Connection bull sale. It is an exciting time for the beef industry. Prices for feeder and fat cattle are at record levels. Inventories are low and a growing world demand point to positive prices for years to come. It is a perfect time to invest in quality, performance tested genetics.

In the last three years HBH and ARY have purchased 148 females from Brookmore Angus to add to their foundation herds. Our goal is to produce top quality seed stock and to achieve this we use top quality herd sires such as Cactus Jack, Ambush and Zebull. We also use a large number of AI sires. Our bull pen has been selected for calving ease, performance, eye appeal, and carcass traits. Every bull has been scrotal measured, semen tested and carcass evaluated and is ready to work for you.

HBH would like to welcome Jim McGhee to our farm staff. Stop by the farm for a visit and a preview of the bulls. If any of us at HBH and ARY can be of any assistance in selecting your bulls please feel free to give us a call, or call any of our sale staff.

We would like to thank Jack and Barb for giving us this great opportunity in the Angus business. Jack and Barb are great to work with and wonderful mentors. Come and enjoy lunch with us sale day!

Barb & Ray



LOT 76

HBH
BAKARI 418B



VISION UNANIMOUS 1418

BW +2.5 WW +79 YW +141 Milk +20 TM +60 SC: +1.44

Vision Unanimous 1418 has phenomenal performance with a 1611 lb. yearling weight and a 902 lb. weaning weight. He has a fresh outcross pedigree; as well Unanimous has outstanding feet and leg.

2 SONS SELL

76

HBH BAKARI 418B

MALE HBH 418B 1784508 JANUARY 23 2014

VISIONTOPLINE ROYAL STOCKMAN DDF
VISION UNANIMOUS 1418 AMF CAF NHF DDF 1701532
VISION EDELLA 665 CAF

GAMBLES ROYAL FLUSH AMF
LAGRAND PRIDE 7140
BOYD ON TARGET 1083 AMF CAC NHF DDF
VISION EDELLA 337

| CARCASS | |
|---------|-------|
| MARB | 4.85 |
| BF | 12.40 |
| REA | 13.20 |
| %LMY | 56.80 |

TC FOREMAN 016 DDF
HBH BANDOLIER LASS 18R 1315467
KEMBAR BANDOLIER LASS 23N

CONNELLY FOREFRONT AMF CAF NHF DDF
TC PRIDE 8067 DDF
BROOKMORE STOCKMAN 89K
KEMBAR BANDOLIER LASS 42J

| ACT. BW | ACT. WW | ADJ. 205 | ADJ. 365 | EPDS | | | | | | | | |
|---------|---------|----------|----------|------|-----|-----|------|------|-----|-----|-----|-----|
| | | | | BW | WW | YW | MILK | TM | | | | |
| 94 | 844 | 751 | 1508 | +3.8 | 37% | +62 | 28% | +109 | 20% | +19 | 11% | +50 |

77

HBH BAXTER 447B

MALE HBH 447B 1784532 JANUARY 31 2014

VISIONTOPLINE ROYAL STOCKMAN DDF
VISION UNANIMOUS 1418 AMF CAF NHF DDF 1701532
 VISION EDELLA 665 CAF

GAMBLES ROYAL FLUSH AMF
 LAGRAND PRIDE 7140
 BOYD ON TARGET 1083 AMF CAC NHF DDF
 VISION EDELLA 337

| CARCASS | |
|---------|-------|
| MARB | 5.00 |
| BF | 7.62 |
| REA | 12.19 |
| %LMY | 60.86 |

MVF EXTRA 85R
HBH HEROINE 63T 1492213
 KEMBAR HEROINE 21N

NICHOLS EXTRA H6 AMF CAF NHF DDF
 HAPPYVALE JRP NEONIA 85E
 KEMBAR TWISTER 31J
 KEMBAR HEROINE 15J

| ACT. BW | ACT. WW | ADJ. 205 | ADJ. 365 | EPDS | | | | | | | | |
|---------|---------|----------|----------|------|-----|-----|------|-----|-----|-----|----|-----|
| | | | | BW | WW | YW | MILK | TM | | | | |
| 97 | 744 | 684 | 1309 | +4.6 | 34% | +53 | 25% | +97 | 17% | +18 | 9% | +45 |

HBH / AIREY WEANING WEIGHTS TAKEN SEPT. 14/14
 with the exception of
 Lots 79 - 86 - 93 - 103
 105 - 111 - 124 - 132
 WEANED OCT. 5/14



LOT 78

HBH
 BOUNTY 415B



LOT 79 - HBH BEAUMONT 455B

78

HBH BOUNTY 415B

MALE HBH 415B 1784505 JANUARY 21 2014

S A V 707 RITO 9969 DMF AMF CAF NHF DDF
S A V REVERE 1180 AMF CAF NHF 1717315
 A C DUKE GIRL 57 AMF CAF DDF

RITO 707 OF IDEAL 3407 7075
 BR POLLY 8077-472
 CAR TRACKER 305
 A C DUKE GIRL 330 AMF

| CARCASS | |
|---------|-------|
| MARB | 5.20 |
| BF | 7.17 |
| REA | 13.93 |
| %LMY | 62.74 |

MVF NEW FRONTIER 016N
HBH ELINE 13S 1492209
 KEMBAR ELINE 78N

B/R NEW FRONTIER 095 AMF CAF NHF DDF
 GREENBUSH TIBBIE 5H
 KEMBAR TWISTER 31J
 BROOKMORE ELINE 68J

| ACT. BW | ACT. WW | ADJ. 205 | ADJ. 365 | EPDS | | | | | | | | |
|---------|---------|----------|----------|------|-----|-----|------|-----|-----|-----|-----|-----|
| | | | | BW | WW | YW | MILK | TM | | | | |
| 83 | 768 | 678 | 1364 | +0.7 | 35% | +41 | 25% | +77 | 16% | +21 | 11% | +42 |

79

HBH BEAUMONT 455B

MALE HBH 455B 1784540 FEBRUARY 02 2014

S A V 707 RITO 9969 DMF AMF CAF NHF DDF
S A V REVERE 1180 AMF CAF NHF 1717315
 A C DUKE GIRL 57 AMF CAF DDF

RITO 707 OF IDEAL 3407 7075
 BR POLLY 8077-472
 CAR TRACKER 305
 A C DUKE GIRL 330 AMF

| CARCASS | |
|---------|-------|
| MARB | 5.00 |
| BF | 10.02 |
| REA | 11.88 |
| %LMY | 58.16 |

HBH OBJECTIVE 46U
HBH BURGESS 78Y 1652165
 KEMBAR BURGESS 13K

QUAKER HILL OBJECTIVE 3J15 AMF CAF NHF DDF
 KEMBAR LUCY 21P
 KDR JUSTIN 2D
 KEMBAR BURGESS 11E

| ACT. BW | ACT. WW | ADJ. 205 | ADJ. 365 | EPDS | | | | | | | | |
|---------|---------|----------|----------|------|-----|-----|------|-----|-----|-----|-----|-----|
| | | | | BW | WW | YW | MILK | TM | | | | |
| 74 | 759 | 685 | 1205 | +1.0 | 35% | +45 | 25% | +87 | 16% | +28 | 11% | +51 |



S A V REVERE 1180

BW +2.1 WW +46 YW +104 Milk +34 TM +57 SC: +1.45
 2 SONS SELL



LOT 80

HBH
BOURBON 410B

80

HBH BOURBON 410B

MALE HBH 410B 1784500 JANUARY 17 2014

TRES MARIAS 6301 ZORZAL
WAF ZORZAL 321U AMF CAF NHF OSF 1485949
TRES MARIAS 6582 CUMELLEN 5632

TRES MARIAS 5887 HORNERO
TRES MARIAS 4850 WIND EXT
TRES MARIAS 5837 CUMELLEN
TRES MARIAS 5632 CHAPAR 5026

S A V BISMARCK 5682 AMF CAF NHF DDF
BROOKMORE MAIDEN 147W 1527551
BROOKMORE MAIDEN 156T CAF

G A R GRID MAKER AMF CAF NHF DDF
S A V ABIGALE 0451
S A F 598 BANDO 5175 AMF CAC DDF
BROOKMORE MAIDEN 48M

| CARCASS | |
|---------|-------|
| MARB | 6.50 |
| BF | 12.40 |
| REA | 14.76 |
| %LMY | 58.08 |

| ACT. BW | ACT. WW | ADJ. 205 | ADJ. 365 | EPDS | | | | | | | | |
|---------|---------|----------|----------|------|-----|-----|------|-----|-----|-----|-----|-----|
| | | | | BW | WW | YW | MILK | TM | | | | |
| 85 | 792 | 689 | 1376 | +2.1 | 37% | +45 | 27% | +72 | 21% | +14 | 13% | +37 |



LOT 81 - HBH BENEFIT 460B

81

HBH BENEFIT 460B

MALE HBH 460B 1784544 FEBRUARY 03 2014

TRES MARIAS 6301 ZORZAL
WAF ZORZAL 321U AMF CAF NHF OSF 1485949
TRES MARIAS 6582 CUMELLEN 5632

TRES MARIAS 5887 HORNERO
TRES MARIAS 4850 WIND EXT
TRES MARIAS 5837 CUMELLEN
TRES MARIAS 5632 CHAPAR 5026

S A V NET WORTH 4200 AMF CAF NHF DDF
BROOKMORE HEROINE 128W 1513396
BROOKMORE HEROINE 151L

S A V 8180 TRAVELER 004 DMF DMF AMF CAF NHF OSF DDF
S A V MAY 2410
G D A R ROLLS ROYCE 203
BROOKMORE HEROINE 17A

| CARCASS | |
|---------|-------|
| MARB | 5.35 |
| BF | 11.96 |
| REA | 11.97 |
| %LMY | 56.25 |

| ACT. BW | ACT. WW | ADJ. 205 | ADJ. 365 | EPDS | | | | | | | | |
|---------|---------|----------|----------|------|-----|-----|------|-----|-----|----|-----|-----|
| | | | | BW | WW | YW | MILK | TM | | | | |
| 86 | 748 | 695 | 1292 | +2.3 | 36% | +44 | 27% | +73 | 21% | +9 | 13% | +31 |

WAF ZORZAL 321U

BW +3.8 WW +38 YW +50 Milk +0 TM +19 SC +0.02

BW: 98 lbs. Adj. 205D: 771 lbs. Adj. 365D: 1309 lbs.

Outcross genetics from Argentina, Zorzal was bred by Tres Marias, the top Angus herd in South America, 17 times breeder of the year award winner. Tres Marias 6301 Zorzal, the sire of Zorzal 321U, was Grand Champion Bull at Palermo, South America's biggest show in 2004 and sired the Palermo Grand Champion bulls in 2006, 2008 and 2010, and the Grand Champion Females at Palermo in 2008 and 2012.

7 SONS SELL





LOT 82 - HBH BOMBER 404B



BROOKMORE KARAMA 129U - DAM OF LOT 82

82 HBH BOMBER 404B

MALE HBH 404B 1784495 JANUARY 13 2014

TRES MARIAS 6301 ZORZAL
WAF ZORZAL 321U AMF CAF NHF OSF 1485949
TRES MARIAS 6582 CUMELEN 5632

TRES MARIAS 5887 HORNERO
TRES MARIAS 4850 WIND EXT
TRES MARIAS 5837 CUMELEN
TRES MARIAS 5632 CHAPAR 5026

| CARCASS | |
|---------|-------|
| MARB | 5.00 |
| BF | 9.54 |
| REA | 13.91 |
| %LMY | 60.30 |

S A V 004 DENSITY 4336 AMF CAF NHF DDF
BROOKMORE KARAMA 129U 1441454
BROOKMORE KARAMA 109P

S A V 8180 TRAVELER 004 DMF DMF AMF CAF NHF DDF
S A V MAY 7238 CAF DDF
VERMILION DATELINE 7078 AMF CAF NHF DDF
BROOKMORE KARAMA 159K

| ACT. BW | ACT. WW | ADJ. 205 | ADJ. 365 | EPDS | | | | | | | | |
|---------|---------|----------|----------|------|-----|-----|------|-----|-----|----|-----|-----|
| | | | | BW | WW | YW | MILK | TM | | | | |
| 86 | 699 | 601 | 1292 | +3.5 | 36% | +35 | 27% | +58 | 21% | +8 | 13% | +26 |

84 HBH BARBER 420B

MALE HBH 420B 1784510 JANUARY 23 2014

TRES MARIAS 6301 ZORZAL
WAF ZORZAL 321U AMF CAF NHF OSF 1485949
TRES MARIAS 6582 CUMELEN 5632

TRES MARIAS 5887 HORNERO
TRES MARIAS 4850 WIND EXT
TRES MARIAS 5837 CUMELEN
TRES MARIAS 5632 CHAPAR 5026

| CARCASS | |
|---------|-------|
| MARB | 5.20 |
| BF | 11.43 |
| REA | 12.41 |
| %LMY | 57.15 |

K C F BENNETT TOTAL AMF CAF NHF DDF
BROOKMORE MARY 209W 1513743
BROOKMORE MARY 90M

SITZ ALLIANCE 6595 DMF AMF CAF NHF DDF
EXT OF CONANGA 6790
PF 7215 AVENGER 0232
BROOKMORE MARY 37E

| ACT. BW | ACT. WW | ADJ. 205 | ADJ. 365 | EPDS | | | | | | | | |
|---------|---------|----------|----------|------|-----|-----|------|-----|-----|-----|-----|-----|
| | | | | BW | WW | YW | MILK | TM | | | | |
| 70 | 690 | 613 | 1230 | +0.9 | 36% | +35 | 27% | +58 | 21% | +10 | 13% | +28 |

83 HBH BANDIT 406B

MALE HBH 406B 1784496 JANUARY 15 2014

TRES MARIAS 6301 ZORZAL
WAF ZORZAL 321U AMF CAF NHF OSF 1485949
TRES MARIAS 6582 CUMELEN 5632

TRES MARIAS 5887 HORNERO
TRES MARIAS 4850 WIND EXT
TRES MARIAS 5837 CUMELEN
TRES MARIAS 5632 CHAPAR 5026

| CARCASS | |
|---------|-------|
| MARB | 6.65 |
| BF | 12.86 |
| REA | 11.27 |
| %LMY | 54.77 |

MOHNEN DYNAMITE 1356 AMF CAF NHF DDF
BROOKMORE ENCHANTRESS 59W 1514108
BROOKMORE ENCHANTRESS 225P

BALDRIDGE KABOOM K243 KCF CAF
MOHNEN JILT 910 AMF CAF DDF
SITZ ALLIANCE 6595 DMF AMF CAF NHF DDF
BROOKMORE ENCHANTRESS 68L

| ACT. BW | ACT. WW | ADJ. 205 | ADJ. 365 | EPDS | | | | | | | | |
|---------|---------|----------|----------|------|-----|-----|------|-----|-----|----|-----|-----|
| | | | | BW | WW | YW | MILK | TM | | | | |
| 84 | 686 | 594 | 1282 | +3.4 | 37% | +40 | 28% | +71 | 21% | +6 | 13% | +26 |

85 HBH BRASS 452B

MALE HBH 452B 1784538 FEBRUARY 01 2014

TRES MARIAS 6301 ZORZAL
WAF ZORZAL 321U AMF CAF NHF OSF 1485949
TRES MARIAS 6582 CUMELEN 5632

TRES MARIAS 5887 HORNERO
TRES MARIAS 4850 WIND EXT
TRES MARIAS 5837 CUMELEN
TRES MARIAS 5632 CHAPAR 5026

| CARCASS | |
|---------|-------|
| MARB | 6.25 |
| BF | 10.54 |
| REA | 11.28 |
| %LMY | 57.14 |

S A V NET WORTH 4200 AMF CAF NHF DDF
BROOKMORE LUCY 187U 1441329
BROOKMORE LUCY 143L

S A V 8180 TRAVELER 004 DMF DMF AMF CAF NHF OSF DDF
S A V MAY 2410
BROOKMORE EXTRA GOLD 155G
KEMBAR LUCY 16F

| ACT. BW | ACT. WW | ADJ. 205 | ADJ. 365 | EPDS | | | | | | | | |
|---------|---------|----------|----------|------|-----|-----|------|-----|-----|-----|-----|-----|
| | | | | BW | WW | YW | MILK | TM | | | | |
| 100 | 769 | 710 | 1386 | +6.2 | 36% | +45 | 27% | +74 | 21% | +10 | 13% | +33 |



LOT 85 - HBH BRASS 452B

86 HBH BONNER 12B

MALE HBH 12B 1784587 FEBRUARY 18 2014

TRES MARIAS 6301 ZORZAL
WAF ZORZAL 321U AMF CAF NHF OSF 1485949
TRES MARIAS 6582 CUMELEN 5632

TRES MARIAS 5887 HORNERO
TRES MARIAS 4850 WIND EXT
TRES MARIAS 5837 CUMELEN
TRES MARIAS 5632 CHAPAR 5026

| CARCASS | |
|---------|-------|
| MARB | 6.15 |
| BF | 12.38 |
| REA | 13.09 |
| %LMY | 56.74 |

S A V FINAL ANSWER 0035 AMF CAF NHF DDF
BROOKMORE DAISY 105W 1516065
BROOKMORE DAISY 176S

SITZ TRAVELER 8180 AMF CAF NHF DDF
S A V EMULOUS 8145 CAF
W C C SPECIAL DESIGN L309 AMF CAF NHF DDF
2J DAISY 12J

| ACT. BW | ACT. WW | ADJ. 205 | ADJ. 365 | EPDS | | | | | | | | |
|---------|---------|----------|----------|------|-----|-----|------|-----|-----|-----|-----|-----|
| | | | | BW | WW | YW | MILK | TM | | | | |
| 90 | 764 | 693 | 1241 | +2.7 | 36% | +51 | 27% | +74 | 21% | +10 | 13% | +36 |

LOT 87
ARY
BOLD 3B



87

ARY BOLD 3B

MALE ARY 3B 1781171 JANUARY 12 2014

MYTTY IN FOCUS AMF CAF NHF DDF
B P F SPECIAL FOCUS 504 DMF AMF CAF NHF DDF 1644193
B P F BLACK CASH 341

S A F FOCUS OF E R AMF CAF NHF DDF
MYTTY COUNTESS 906
J R SOMETHING SPECIAL AMF CAC NHF DDF
B P F BLACK CASH 944

| CARCASS | |
|---------|-------|
| MARB | 5.80 |
| BF | 12.40 |
| REA | 12.51 |
| %LMY | 56.24 |

SITZ UPWARD 307R DMF AMF CAF NHF DDF
BROOKMORE DAISY 214Z 1666961
BROOKMORE DAISY 259R

CONNEALY ONWARD DMF AMF CAF NHF DDF
SITZ HENRIETTA PRIDE 81M
SITZ ALLIANCE 6595 DMF AMF CAF NHF DDF
BABA DAISY 24L

| ACT. | | ADJ. | | EPDS | | | | | | | | |
|------|-----|------|------|------|-----|-----|------|------|-----|-----|-----|-----|
| BW | WW | 205 | 365 | BW | WW | YW | MILK | TM | | | | |
| 71 | 803 | 757 | 1487 | +0.4 | 37% | +58 | 28% | +103 | 23% | +31 | 20% | +60 |



LOT 88 - ARY BRAVEHEART 6B

88

ARY BRAVEHEART 6B

MALE ARY 6B 1781174 JANUARY 17 2014

MYTTY IN FOCUS AMF CAF NHF DDF
B P F SPECIAL FOCUS 504 DMF AMF CAF NHF DDF 1644193
B P F BLACK CASH 341

S A F FOCUS OF E R AMF CAF NHF DDF
MYTTY COUNTESS 906
J R SOMETHING SPECIAL AMF CAC NHF DDF
B P F BLACK CASH 944

| CARCASS | |
|---------|-------|
| MARB | 4.70 |
| BF | 10.48 |
| REA | 14.77 |
| %LMY | 60.05 |

BROOKMORE DENSITY 111T
BROOKMORE ENCHANTRESS 208Z 1666872
BROOKMORE ENCHANTRESS 26P

S A V 004 DENSITY 4336 AMF CAF NHF DDF
BROOKMORE LADY JANE 224N
BUSHS GRAND DESIGN AMF CAF NHF DDF

| ACT. | | ADJ. | | EPDS | | | | | | | | |
|------|-----|------|------|------|-----|-----|------|-----|-----|-----|-----|-----|
| BW | WW | 205 | 365 | BW | WW | YW | MILK | TM | | | | |
| 79 | 801 | 770 | 1488 | +1.4 | 36% | +60 | 27% | +97 | 22% | +25 | 18% | +55 |

B P F SPECIAL FOCUS 504

BW -1.2 WW +54 YW +96 Milk +30 TM +57 SC: +1.25
BW: 72 lbs. Adj. 205D: 769 lbs.

BPF Special Focus, proven calving ease that offers maternal strength, performance and carcass quality along with great phenotype, muscle thickness and fleshing ability with great structure.

2 SONS SELL





LOT 89 - HBH BARDO 438B



VIN-MAR FOCUS IN 8847

BW -0.2 WW +67 YW +119 Milk +25 TM +59 SC: +0.92

89

HBH BARDO 438B

MALE HBH 438B 1784522 JANUARY 29 2014

MYTTY IN FOCUS AMF CAF NHF DDF
VIN-MAR FOCUS IN 8847 AMF CAF NHF DDF 1536482
BALDRIDGE ERROLINE S216 CAF

S A F FOCUS OF E R AMF CAF NHF DDF
MYTTY COUNTESS 906
RITO 112 OF 2536 RITO 616 AMF CAF NHF DDF
BALDRIDGE ERROLINE L540

| CARCASS | |
|---------|-------|
| MARB | 5.85 |
| BF | 9.52 |
| REA | 12.79 |
| %LMY | 59.41 |

HBH DENSITY 65W
HBH LUCY 240Z 1682335
KEMBAR LUCY 93P

S A V 004 DENSITY 4336 AMF CAF NHF DDF
KEMBAR ROSEBUD 69P
SCC LUCRATIVE 25L
KEMBAR LUCY 84L

| ACT. BW | ACT. WW | ADJ. 205 | ADJ. 365 | EPDS | | | | | | | | |
|---------|---------|----------|----------|------|-----|-----|------|------|-----|-----|-----|-----|
| | | | | BW | WW | YW | MILK | TM | | | | |
| 77 | 723 | 732 | 1359 | +1.1 | 36% | +57 | 26% | +101 | 19% | +19 | 15% | +48 |

90

ARY AVENGER 9A

MALE ARY 9A 1731949 FEBRUARY 23 2013

MYTTY IN FOCUS AMF CAF NHF DDF
WILDE'S ARMOR 6210 AMF CAF NHF DDF 1534586
WILDE'S 8005 ELGA 6210 CAF

S A F FOCUS OF E R AMF CAF NHF DDF
MYTTY COUNTESS 906
BOYD NEW DAY 8005 AMF CAF NHF DDF
WILDE'S 022 ELGA 4100

PRAIRIELANE 6018-9050
FRIESO 1116Y PRAIRIE 9050 1610365
FRIESO 8005U PRAIRIE 6037

PRAIRIELANE FINAL ANSWER 6018
PRAIRIELANE 5057 ESTELLE 7114
PRAIRIELANE PAYWEIGHT 6037S
FRIESO 4065P PRAIRIE 0051

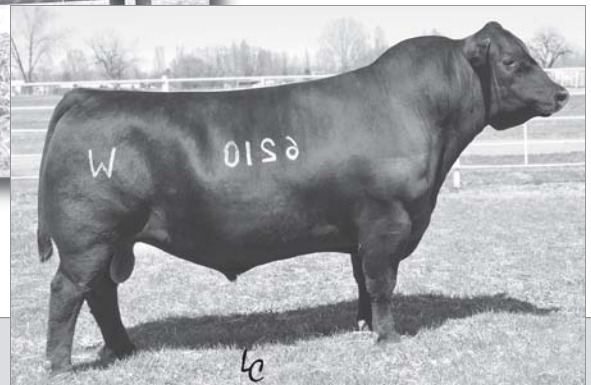
| ACT. BW | ACT. WW | ADJ. 205 | ADJ. 365 | EPDS | | | | | | | | |
|---------|---------|----------|----------|------|-----|-----|------|------|-----|-----|-----|-----|
| | | | | BW | WW | YW | MILK | TM | | | | |
| 80 | 765 | 823 | 1433 | +2.7 | 36% | +67 | 26% | +107 | 24% | +19 | 12% | +53 |



2 Year Old

LOT 90

ARY
AVENGER 9A



WILDE'S ARMOR 6210

BW -0.4 WW +60 YW +100 Milk +14 TM +44 SC: +0.62

*HBH Angus Bulls
Recommended for Heifers*

OUT OF 1ST CALF HEIFERS: Lots 87, 88, 89, 91, 92, 93, 117 & 131

OUT OF COWS: Lots 78, 79, 80, 84, 95, 98, 99, 100, 106,
110, 111, 119, 120, 121, 122, 123, 126, 129, 130 & 132



LOT 91
HBH
BOOKER 14B

91 HBH BOOKER 14B

MALE HBH 14B 1784585 FEBRUARY 18 2014

LEMAR DAKOTA GOLD 18T AMF CAF NHF DDF
HBH ZEBUL 231Z 1682319
HBH MISS THUNDER 47W

MYTTY IN FOCUS AMF CAF NHF DDF
LEMAR PEGGY 74R
CONNEALY THUNDER AMF CAF NHF DDF
HBH MISS EVA 10S

| CARCASS | |
|---------|-------|
| MARB | 5.15 |
| BF | 10.07 |
| REA | 14.19 |
| %LMY | 59.99 |

PRAIRIELANE 8127 - 0081
PRAIRIELANE 0081 ROSEVERA 2104 1669209
PRAIRIELANE 7093 ROSEVERA 9049

PRAIRIELANE 5057-8127
PRAIRIELANE PFRED ROSEBUD 2008
PRAIRIELANE OBJECTIVE 7093
PRAIRIELANE 0009 ROSEVERA 3010

| ACT. | | ADJ. | | EPDS | | | | | | | | |
|------|-----|------|------|------|-----|-----|------|------|-----|-----|----|-----|
| BW | WW | 205 | 365 | BW | WW | YW | MILK | TM | | | | |
| 76 | 746 | 810 | 1565 | +1.1 | 33% | +60 | 21% | +104 | 10% | +25 | 8% | +55 |



LOT 92 - HBH BEVAL 472B

92 HBH BEVAL 472B

MALE HBH 472B 1784552 FEBRUARY 07 2014

LEMAR DAKOTA GOLD 18T AMF CAF NHF DDF
HBH ZEBUL 231Z 1682319
HBH MISS THUNDER 47W

MYTTY IN FOCUS AMF CAF NHF DDF
LEMAR PEGGY 74R
CONNEALY THUNDER AMF CAF NHF DDF
HBH MISS EVA 10S

| CARCASS | |
|---------|-------|
| MARB | 5.70 |
| BF | 7.62 |
| REA | 12.24 |
| %LMY | 60.91 |

HBH THUNDER 25W
HBH LUCY OBJECTIVE 285Z 1682366
HBH LUCY OBJECTIVE HBH 18W

CONNEALY THUNDER AMF CAF NHF DDF
HBH BANDOLIER LASS 40T
QUAKER HILL OBJECTIVE 3J15 AMF CAF NHF DDF
KEMBAR LUCY 113P

| ACT. | | ADJ. | | EPDS | | | | | | | | |
|------|-----|------|------|------|-----|-----|------|-----|-----|-----|----|-----|
| BW | WW | 205 | 365 | BW | WW | YW | MILK | TM | | | | |
| 68 | 670 | 706 | 1388 | -1.5 | 33% | +45 | 21% | +84 | 11% | +20 | 8% | +43 |



LOT 93 - HBH BELLAMY 41B

93 HBH BELLAMY 41B

MALE HBH 41B 1784610 MARCH 12 2014

LEMAR DAKOTA GOLD 18T AMF CAF NHF DDF
HBH ZEBUL 231Z 1682319
HBH MISS THUNDER 47W

MYTTY IN FOCUS AMF CAF NHF DDF
LEMAR PEGGY 74R
CONNEALY THUNDER AMF CAF NHF DDF
HBH MISS EVA 10S

| CARCASS | |
|---------|-------|
| MARB | 4.30 |
| BF | 7.14 |
| REA | 12.34 |
| %LMY | 61.48 |

HBH THUNDER 25W
HBH BANDOLIER LASS 227Z 1682321
HBH BANDOLIER LASS 5W

CONNEALY THUNDER AMF CAF NHF DDF
HBH BANDOLIER LASS 40T
MVF NEW DESIGN 315P
HBH BANDOLIER LASS 18R

| ACT. | | ADJ. | | EPDS | | | | | | | | |
|------|-----|------|------|------|-----|-----|------|-----|-----|-----|----|-----|
| BW | WW | 205 | 365 | BW | WW | YW | MILK | TM | | | | |
| 80 | 610 | 679 | 1315 | +1.3 | 32% | +42 | 21% | +79 | 11% | +20 | 8% | +41 |



LOT 94

HBH
BARCLAY 23B

94

HBH BARCLAY 23B

MALE HBH 23B 1784592 FEBRUARY 22 2014

SITZ UPWARD 307R DMF AMF CAF NHF DDF
BROOKMORE CACTUS JACK 87Y 1603570
BROOKMORE ELINE 91M

CONNELLY ONWARD DMF AMF CAF NHF DDF
SITZ HENRIETTA PRIDE 81M
BENCHMARK STRETCH 062
BROOKMORE ELINE 42K

| CARCASS | |
|---------|-------|
| MARB | 5.65 |
| BF | 10.02 |
| REA | 11.58 |
| %LMY | 57.92 |

MVF EXTRA 85R
HBH BANDOLIER LASS 49T 1523381
HBH BANDOLIER LASS 30R

NICHOLS EXTRA H6 AMF CAF NHF DDF
HAPPYVALE JRP NEONIA 85E
MVF NEW FRONTIER 016N
KEMBAR BANDOLIER LASS 109H

| ACT. BW | ACT. WW | ADJ. 205 | ADJ. 365 | EPDS | | | | | | | | |
|---------|---------|----------|----------|------|-----|-----|------|-----|-----|-----|-----|-----|
| | | | | BW | WW | YW | MILK | TM | | | | |
| 101 | 807 | 810 | 1497 | +4.8 | 33% | +52 | 22% | +90 | 12% | +21 | 11% | +47 |



LOT 95 - HBH BISHOP 405B

95

HBH BISHOP 405B

MALE HBH 405B 1784494 JANUARY 13 2014

SITZ UPWARD 307R DMF AMF CAF NHF DDF
BROOKMORE CACTUS JACK 87Y 1603570
BROOKMORE ELINE 91M

CONNELLY ONWARD DMF AMF CAF NHF DDF
SITZ HENRIETTA PRIDE 81M
BENCHMARK STRETCH 062
BROOKMORE ELINE 42K

| CARCASS | |
|---------|-------|
| MARB | 5.60 |
| BF | 6.67 |
| REA | 11.97 |
| %LMY | 61.66 |

HBH GRAND DESIGN 4S
HBH GRAND LASS 24U 1523382
HBH BANDOLIER LASS 25S

BUSHS GRAND DESIGN AMF CAF NHF DDF
KEMBAR LUCY 93P
MVF NEW FRONTIER 016N
KEMBAR BANDOLIER LASS 24N

| ACT. BW | ACT. WW | ADJ. 205 | ADJ. 365 | EPDS | | | | | | | | |
|---------|---------|----------|----------|------|-----|-----|------|-----|-----|-----|-----|-----|
| | | | | BW | WW | YW | MILK | TM | | | | |
| 64 | 678 | 580 | 1199 | -0.3 | 33% | +41 | 22% | +75 | 11% | +18 | 11% | +39 |

BROOKMORE CACTUS JACK 87Y

BW +3.2 WW +60 YW +107 Milk +24 TM +54
BW: 94 lbs. Adj. 205D: 785 lbs. Adj. 365D: 1522 lbs.

What a great group of sons. Cactus Jack 87Y was the lead off bull at the 2012 Cattleman's Connection Bull Sale, he had a 205 day weight of 785 lbs. and a 365 day weight of 1522 lbs., a marbling score of 6.80 and a REA of 15.61 with a % LMY of nearly 62. You will like his sons.

13 SONS SELL





LOT 96 - HBH BARBAR 1B



LOT 99 - HBH BENTLEY 446B

96

HBH BABAR 1B

MALE HBH 1B 1784574 FEBRUARY 14 2014

SITZ UPWARD 307R DMF AMF CAF NHF DDF
BROOKMORE CACTUS JACK 87Y 1603570
BROOKMORE ELINE 91M

CONNELY ONWARD DMF AMF CAF NHF DDF
SITZ HENRIETTA PRIDE 81M
BENCHMARK STRETCH 062
BROOKMORE ELINE 42K

| CARCASS | |
|---------|-------|
| MARB | 4.65 |
| BF | 6.22 |
| REA | 12.09 |
| %LMY | 62.21 |

HBH GRAND DESIGN 4S
HBH HEIRESS 67W 1682269
HBH HEIRESS 53S

BUSHES GRAND DESIGN AMF CAF NHF DDF
KEMBAR LUCY 93P
MVF NEW FRONTIER 016N
KEMBAR HEIRESS 116N

| ACT. BW | ACT. WW | ADJ. 205 | ADJ. 365 | EPDS | | | | | | | | |
|---------|---------|----------|----------|------|-----|-----|------|-----|-----|-----|-----|-----|
| | | | | BW | WW | YW | MILK | TM | | | | |
| 97 | 779 | 756 | 1433 | +4.8 | 32% | +52 | 21% | +87 | 11% | +21 | 10% | +47 |

99

HBH BENTLEY 446B

MALE HBH 446B 1784531 JANUARY 31 2014

SITZ UPWARD 307R DMF AMF CAF NHF DDF
BROOKMORE CACTUS JACK 87Y 1603570
BROOKMORE ELINE 91M

CONNELY ONWARD DMF AMF CAF NHF DDF
SITZ HENRIETTA PRIDE 81M
BENCHMARK STRETCH 062
BROOKMORE ELINE 42K

| CARCASS | |
|---------|-------|
| MARB | 5.65 |
| BF | 9.05 |
| REA | 13.75 |
| %LMY | 60.67 |

HBH GRAND DESIGN 4S
HBH ALL LUCY 89W 1668774
HBH ALL LUCY 15S

BUSHES GRAND DESIGN AMF CAF NHF DDF
KEMBAR LUCY 93P
SITZ ALLIANCE 659S DMF AMF CAF NHF DDF
KEMBAR LUCY 68P

| ACT. BW | ACT. WW | ADJ. 205 | ADJ. 365 | EPDS | | | | | | | | |
|---------|---------|----------|----------|------|-----|-----|------|-----|-----|-----|-----|-----|
| | | | | BW | WW | YW | MILK | TM | | | | |
| 85 | 742 | 681 | 1441 | +2.5 | 33% | +47 | 22% | +79 | 12% | +21 | 11% | +45 |

97

HBH BAILEY 450B

MALE HBH 450B 1784533 JANUARY 31 2014

SITZ UPWARD 307R DMF AMF CAF NHF DDF
BROOKMORE CACTUS JACK 87Y 1603570
BROOKMORE ELINE 91M

CONNELY ONWARD DMF AMF CAF NHF DDF
SITZ HENRIETTA PRIDE 81M
BENCHMARK STRETCH 062
BROOKMORE ELINE 42K

| CARCASS | |
|---------|-------|
| MARB | 4.70 |
| BF | 6.67 |
| REA | 13.37 |
| %LMY | 62.80 |

BROOKMORE STOCKMAN 89K
KEMBAR PRIDE 44P 1232739
KEMBAR PRIDE 14F

EBON HILL STOCKMAN 55'95
BROOKMORE PRIDE 139F
MVF LINEDRIVE 40Y
KEMBAR PRIDE 6Y

| ACT. BW | ACT. WW | ADJ. 205 | ADJ. 365 | EPDS | | | | | | | | |
|---------|---------|----------|----------|------|-----|-----|------|-----|-----|-----|-----|-----|
| | | | | BW | WW | YW | MILK | TM | | | | |
| 91 | 815 | 748 | 1401 | +3.5 | 35% | +50 | 24% | +82 | 15% | +18 | 12% | +43 |

100

HBH BART 466B

MALE HBH 466B 1784549 FEBRUARY 05 2014

SITZ UPWARD 307R DMF AMF CAF NHF DDF
BROOKMORE CACTUS JACK 87Y 1603570
BROOKMORE ELINE 91M

CONNELY ONWARD DMF AMF CAF NHF DDF
SITZ HENRIETTA PRIDE 81M
BENCHMARK STRETCH 062
BROOKMORE ELINE 42K

| CARCASS | |
|---------|-------|
| MARB | 6.20 |
| BF | 10.97 |
| REA | 12.86 |
| %LMY | 57.99 |

HBH KRUGERRAND 1S
HBH LUCY KRU 1U 1492214
KEMBAR LUCY 31P

F A R KRUGERRAND 410H AMF CAF NHF DDF
KEMBAR LUCY 59P
SCC LUCRATIVE 25L
KEMBAR LUCY 126H

| ACT. BW | ACT. WW | ADJ. 205 | ADJ. 365 | EPDS | | | | | | | | |
|---------|---------|----------|----------|------|-----|-----|------|-----|-----|-----|-----|-----|
| | | | | BW | WW | YW | MILK | TM | | | | |
| 82 | 722 | 676 | 1333 | +2.2 | 34% | +46 | 23% | +83 | 13% | +14 | 11% | +37 |

98

HBH BAKER 453B

MALE HBH 453B 1784536 FEBRUARY 01 2014

SITZ UPWARD 307R DMF AMF CAF NHF DDF
BROOKMORE CACTUS JACK 87Y 1603570
BROOKMORE ELINE 91M

CONNELY ONWARD DMF AMF CAF NHF DDF
SITZ HENRIETTA PRIDE 81M
BENCHMARK STRETCH 062
BROOKMORE ELINE 42K

| CARCASS | |
|---------|-------|
| MARB | 5.15 |
| BF | 8.10 |
| REA | 12.68 |
| %LMY | 60.78 |

MVF NEW FRONTIER 016N
HBH BURGESS 28R 1360223
KEMBAR BURGESS 13K

B/R NEW FRONTIER 095 AMF CAF NHF DDF
GREENBUSH TIBBIE 5H
KDR JUSTIN 2D
KEMBAR BURGESS 11E

| ACT. BW | ACT. WW | ADJ. 205 | ADJ. 365 | EPDS | | | | | | | | |
|---------|---------|----------|----------|------|-----|-----|------|-----|-----|-----|-----|-----|
| | | | | BW | WW | YW | MILK | TM | | | | |
| 81 | 676 | 607 | 1248 | +3.3 | 31% | +40 | 21% | +71 | 13% | +19 | 12% | +39 |

101

HBH BOGART 473B

MALE HBH 473B 1784554 FEBRUARY 07 2014

SITZ UPWARD 307R DMF AMF CAF NHF DDF
BROOKMORE CACTUS JACK 87Y 1603570
BROOKMORE ELINE 91M

CONNELY ONWARD DMF AMF CAF NHF DDF
SITZ HENRIETTA PRIDE 81M
BENCHMARK STRETCH 062
BROOKMORE ELINE 42K

| CARCASS | |
|---------|-------|
| MARB | 5.30 |
| BF | 11.92 |
| REA | 13.38 |
| %LMY | 57.44 |

S A V NET WORTH 4200 AMF CAF NHF DDF
HBH HEROINE 31W 1542979
HBH HEROINE 33T

S A V 8180 TRAVELER 004 DMF AMF CAF NHF OSF DDF
S A V MAY 2410
MVF NEW FRONTIER 016N
KEMBAR HEROINE 6M

| ACT. BW | ACT. WW | ADJ. 205 | ADJ. 365 | EPDS | | | | | | | | |
|---------|---------|----------|----------|------|-----|-----|------|-----|-----|-----|-----|-----|
| | | | | BW | WW | YW | MILK | TM | | | | |
| 87 | 727 | 686 | 1344 | +3.4 | 33% | +50 | 23% | +91 | 14% | +21 | 11% | +46 |



LOT 102 - HBH BARNEY 34B

102

HBH BARNEY 34B

MALE HBH 34B 1784603 MARCH 02 2014

SITZ UPWARD 307R DMF AMF CAF NHF DDF
BROOKMORE CACTUS JACK 87Y 1603570
 BROOKMORE ELINE 91M

CONNELLY ONWARD DMF AMF CAF NHF DDF
 SITZ HENRIETTA PRIDE 81M
 BENCHMARK STRETCH 062
 BROOKMORE ELINE 42K

| CARCASS | |
|---------|-------|
| MARB | 4.90 |
| BF | 10.49 |
| REA | 12.33 |
| %LMY | 58.05 |

MVF EXTRA 85R
HBH BLACKBIRD 62T 1483436
 KEMBAR BLACKBIRD 92N

NICHOLS EXTRA H6 AMF CAF NHF DDF
 HAPPYVALE JRP NEONIA 85E
 BROOKMORE STOCKMAN 89K
 KEMBAR BLACKBIRD 117H

| ACT. BW | ACT. WW | ADJ. 205 | ADJ. 365 | EPDS | | | | |
|---------|---------|----------|----------|----------|---------|---------|---------|-----|
| | | | | BW | WW | YW | MILK | TM |
| 103 | 708 | 736 | 1531 | +6.3 33% | +47 22% | +85 13% | +19 11% | +43 |

103

HBH BAHAR 478B

MALE HBH 478B 1784555 FEBRUARY 07 2014

SITZ UPWARD 307R DMF AMF CAF NHF DDF
BROOKMORE CACTUS JACK 87Y 1603570
 BROOKMORE ELINE 91M

CONNELLY ONWARD DMF AMF CAF NHF DDF
 SITZ HENRIETTA PRIDE 81M
 BENCHMARK STRETCH 062
 BROOKMORE ELINE 42K

| CARCASS | |
|---------|-------|
| MARB | 4.55 |
| BF | 7.14 |
| REA | 12.82 |
| %LMY | 61.87 |

MVF NEW FRONTIER 016N
HBH HEIRESS 61T 1480465
 KEMBAR HEIRESS 116N

B/R NEW FRONTIER 095 AMF CAF NHF DDF
 GREENBUSH TIBBIE 5H
 BROOKMORE STOCKMAN 89K
 KEMBAR HEIRESS 4C

| ACT. BW | ACT. WW | ADJ. 205 | ADJ. 365 | EPDS | | | | |
|---------|---------|----------|----------|----------|---------|---------|---------|-----|
| | | | | BW | WW | YW | MILK | TM |
| 87 | 790 | 687 | 1215 | +3.7 33% | +53 22% | +87 12% | +19 11% | +46 |



LOT 107 - HBH BASTIAN 465B

104

HBH BARLOW 485B

MALE HBH 485B 1784561 FEBRUARY 09 2014

SITZ UPWARD 307R DMF AMF CAF NHF DDF
BROOKMORE CACTUS JACK 87Y 1603570
 BROOKMORE ELINE 91M

CONNELLY ONWARD DMF AMF CAF NHF DDF
 SITZ HENRIETTA PRIDE 81M
 BENCHMARK STRETCH 062
 BROOKMORE ELINE 42K

| CARCASS | |
|---------|-------|
| MARB | 5.55 |
| BF | 10.49 |
| REA | 13.54 |
| %LMY | 59.03 |

MVF EXTRA 85R
HBH BURGESSA 42T 1483432
 HBH BURGESS 15R

NICHOLS EXTRA H6 AMF CAF NHF DDF
 HAPPYVALE JRP NEONIA 85E
 TC FOREMAN 016 DDF
 KEMBAR BURGESS 16N

| ACT. BW | ACT. WW | ADJ. 205 | ADJ. 365 | EPDS | | | | |
|---------|---------|----------|----------|----------|---------|---------|---------|-----|
| | | | | BW | WW | YW | MILK | TM |
| 100 | 800 | 761 | 1495 | +5.0 34% | +50 23% | +91 13% | +23 11% | +48 |

105

HBH BALBO 20B

MALE HBH 20B 1784593 FEBRUARY 22 2014

SITZ UPWARD 307R DMF AMF CAF NHF DDF
BROOKMORE CACTUS JACK 87Y 1603570
 BROOKMORE ELINE 91M

CONNELLY ONWARD DMF AMF CAF NHF DDF
 SITZ HENRIETTA PRIDE 81M
 BENCHMARK STRETCH 062
 BROOKMORE ELINE 42K

| CARCASS | |
|---------|-------|
| MARB | 5.85 |
| BF | 9.05 |
| REA | 11.81 |
| %LMY | 59.10 |

SITZ ALLIANCE 6595 DMF AMF CAF NHF DDF
HBH ALL LUCY 15S 1354726
 KEMBAR LUCY 68P

SITZ TRAVELER 8180 AMF CAF NHF DDF
 SITZ BARBARAMERE JET 2698
 KEMBAR TWISTER 31J
 KEMBAR LUCY 95G

| ACT. BW | ACT. WW | ADJ. 205 | ADJ. 365 | EPDS | | | | |
|---------|---------|----------|----------|----------|---------|---------|---------|-----|
| | | | | BW | WW | YW | MILK | TM |
| 89 | 794 | 731 | 1251 | +3.1 35% | +55 25% | +84 15% | +23 12% | +51 |

106

HBH BARNABAS 28B

MALE HBH 28B 1784597 FEBRUARY 24 2014

SITZ UPWARD 307R DMF AMF CAF NHF DDF
BROOKMORE CACTUS JACK 87Y 1603570
 BROOKMORE ELINE 91M

CONNELLY ONWARD DMF AMF CAF NHF DDF
 SITZ HENRIETTA PRIDE 81M
 BENCHMARK STRETCH 062
 BROOKMORE ELINE 42K

| CARCASS | |
|---------|-------|
| MARB | 4.60 |
| BF | 11.44 |
| REA | 13.54 |
| %LMY | 58.05 |

MVF EXTRA 85R
HBH LUCY 20T 1602890
 HBH LUCY13R

NICHOLS EXTRA H6 AMF CAF NHF DDF
 HAPPYVALE JRP NEONIA 85E
 TC FOREMAN 016 DDF
 KEMBAR LUCY 77N

| ACT. BW | ACT. WW | ADJ. 205 | ADJ. 365 | EPDS | | | | |
|---------|---------|----------|----------|----------|---------|---------|---------|-----|
| | | | | BW | WW | YW | MILK | TM |
| 85 | 708 | 717 | 1410 | +2.5 33% | +48 22% | +87 13% | +21 11% | +45 |

107

HBH BASTIAN 465B

MALE HBH 465B 1784545 FEBRUARY 04 2014

G A R RETAIL PRODUCT AMF CAF NHF DDF
CONNELLY MENTOR 7374 AMF CAF NHF DDF 1657134
 EXECUTA OF CONANGA 939

G A R PRECISION 1680 AMC NHC
 G A R EXT 4927
 JAUER 353 TRAVELER 589 27
 EXEC OF CONANGA 6940

| CARCASS | |
|---------|-------|
| MARB | 5.45 |
| BF | 11.49 |
| REA | 14.90 |
| %LMY | 59.11 |

HBH DENSITY 65W
HBH LUCY 61Y 1652223
 HBH LUCY 47T

S A V 004 DENSITY 4336 AMF CAF NHF DDF
 KEMBAR ROSEBUD 69P
 MVF NEW DESIGN 315P
 KEMBAR LUCY 59P

| ACT. BW | ACT. WW | ADJ. 205 | ADJ. 365 | EPDS | | | | |
|---------|---------|----------|----------|----------|---------|---------|---------|-----|
| | | | | BW | WW | YW | MILK | TM |
| 87 | 722 | 711 | 1391 | +3.1 36% | +49 27% | +88 20% | +20 19% | +45 |



LOT 108
HBH
BEACON 489B

108

HBH BEACON 489B

MALE HBH 489B 1784566 FEBRUARY 10 2014

TJF AMBUSH 20X
TJF 20X AMBUSH 14Z 1708244
TJF MS FREEDOM 35U

SOO LINE KODIAK 8158
KEMBAR ELINE 48Y 1624863
KEMBAR ELINE 112U

REMINGTON AMBUSH 290T
TJF CHIEF LADY 95U
WESTERN FREEDOM 505
TJF ROSEBUD 90R

HF KODIAK 5R AMF CAF NHF MAF DDF
WINDOVER DELIA 10E
WINDY WILLOWS BRUNO 44L
KEMBAR ELINE 13L

| CARCASS | |
|---------|-------|
| MARB | 5.90 |
| BF | 10.48 |
| REA | 12.59 |
| %LMY | 58.27 |

| EPDS | | | | | | | | | | | | |
|---------|---------|----------|----------|------|-----|-----|------|-----|-----|-----|----|-----|
| ACT. BW | ACT. WW | ADJ. 205 | ADJ. 365 | BW | WW | YW | MILK | TM | | | | |
| 85 | 738 | 743 | 1480 | +3.6 | 33% | +49 | 21% | +81 | 10% | +20 | 8% | +45 |



LOT 109 - HBH BANJORA 38B

109

HBH BANJORA 38B

MALE HBH 38B 1784608 MARCH 10 2014

TJF AMBUSH 20X
TJF 20X AMBUSH 14Z 1708244
TJF MS FREEDOM 35U

HBH GRAND DESIGN 4S
HBH HEROINE 66W 1668772
HBH HEROINE 43S

REMINGTON AMBUSH 290T
TJF CHIEF LADY 95U
WESTERN FREEDOM 505
TJF ROSEBUD 90R

BUSHES GRAND DESIGN AMF CAF NHF DDF
KEMBAR LUCY 93P
KEMBAR FREEDOM 39P
KEMBAR HEROINE 104P

| CARCASS | |
|---------|-------|
| MARB | 5.00 |
| BF | 8.12 |
| REA | 12.29 |
| %LMY | 60.44 |

| EPDS | | | | | | | | | | | | |
|---------|---------|----------|----------|------|-----|-----|------|-----|----|-----|----|-----|
| ACT. BW | ACT. WW | ADJ. 205 | ADJ. 365 | BW | WW | YW | MILK | TM | | | | |
| 85 | 709 | 765 | 1523 | +3.4 | 31% | +50 | 19% | +78 | 7% | +20 | 8% | +45 |

TJF 20X AMBUSH 14Z

BW +4.6 WW +60 YW +107 Milk +24 TM +54

BW: 90 lbs. Adj. 205D: 859 lbs. Adj. 365D: 1405 lbs

TJF 20X Ambush 14Z was the all time high selling bull for Triple J Farms. HBH selected 14Z from the 2013 Triple J Farms Sale, where he was most impressive, and he has sired a very impressive group of sons. This young sire had a 205-day weight of 859 lbs. and a 365 day weight of 1405 lbs. and has done a phenomenal job of breeding.

9 SONS SELL





LOT 110 - HBH BOUNCER 457B



LOT 112 - ARY BRUNO 9B

110

HBH BOUNCER 457B

MALE HBH 457B 1784541 FEBRUARY 02 2014

TJF AMBUSH 20X
TJF 20X AMBUSH 14Z 1708244
TJF MS FREEDOM 35U

REMINGTON AMBUSH 290T
TJF CHIEF LADY 95U
WESTERN FREEDOM 505
TJF ROSEBUD 90R

| CARCASS | |
|---------|-------|
| MARB | 5.00 |
| BF | 11.44 |
| REA | 12.87 |
| %LMY | 57.51 |

HBH KRUGERRAND 1S
HBH ELINE 21Y 1652265
HBH ELINE 19R

F A R KRUGERRAND 410H AMF CAF NHF DDF
KEMBAR LUCY 59P
MVF NEW FRONTIER 016N
KEMBAR ELINE 78N

| ACT. BW | ACT. WW | ADJ. 205 | ADJ. 365 | EPDS | | | | | | | | |
|---------|---------|----------|----------|------|-----|-----|------|-----|----|-----|----|-----|
| | | | | BW | WW | YW | MILK | TM | | | | |
| 79 | 621 | 613 | 1397 | +2.2 | 33% | +40 | 21% | +68 | 8% | +15 | 8% | +35 |

112

ARY BRUNO 9B

MALE ARY 9B 1781178 FEBRUARY 03 2014

TJF AMBUSH 20X
TJF 20X AMBUSH 14Z 1708244
TJF MS FREEDOM 35U

REMINGTON AMBUSH 290T
TJF CHIEF LADY 95U
WESTERN FREEDOM 505
TJF ROSEBUD 90R

| CARCASS | |
|---------|-------|
| MARB | 5.20 |
| BF | 12.38 |
| REA | 12.65 |
| %LMY | 56.38 |

S A V PIONEER 7301 AMF CAF NHF DDF
BROOKMORE ALETA 73Y 1655685
BROOKMORE ALETA 60N

S A V FINAL ANSWER 0035 AMF CAF NHF DDF
S A V BLACKBIRD 5297 CAC
S A NEUTRON 377 AMF CAF NHF DDF
BROOKMORE ALETA 30F

| ACT. BW | ACT. WW | ADJ. 205 | ADJ. 365 | EPDS | | | | | | | | |
|---------|---------|----------|----------|------|-----|-----|------|-----|-----|-----|----|-----|
| | | | | BW | WW | YW | MILK | TM | | | | |
| 83 | 709 | 696 | 1447 | +3.5 | 32% | +53 | 21% | +93 | 11% | +21 | 9% | +48 |

111

HBH BARTHOLOMEW 459B

MALE HBH 459B 1784542 FEBRUARY 03 2014

TJF AMBUSH 20X
TJF 20X AMBUSH 14Z 1708244
TJF MS FREEDOM 35U

REMINGTON AMBUSH 290T
TJF CHIEF LADY 95U
WESTERN FREEDOM 505
TJF ROSEBUD 90R

| CARCASS | |
|---------|-------|
| MARB | 4.80 |
| BF | 9.05 |
| REA | 13.84 |
| %LMY | 60.74 |

S A V PIONEER 7301 AMF CAF NHF DDF
HBH LUCY 15Y 1652256
HBH LUCY 42S

S A V FINAL ANSWER 0035 AMF CAF NHF DDF
S A V BLACKBIRD 5297 CAC
KEMBAR FREEDOM 39P
KEMBAR LUCY 21P

| ACT. BW | ACT. WW | ADJ. 205 | ADJ. 365 | EPDS | | | | | | | | |
|---------|---------|----------|----------|------|-----|-----|------|-----|-----|-----|----|-----|
| | | | | BW | WW | YW | MILK | TM | | | | |
| 74 | 738 | 670 | 1264 | +1.3 | 33% | +49 | 22% | +81 | 10% | +24 | 9% | +49 |

113

HBH BASIL 468B

MALE HBH 468B 1784548 FEBRUARY 05 2014

TJF AMBUSH 20X
TJF 20X AMBUSH 14Z 1708244
TJF MS FREEDOM 35U

REMINGTON AMBUSH 290T
TJF CHIEF LADY 95U
WESTERN FREEDOM 505
TJF ROSEBUD 90R

| CARCASS | |
|---------|-------|
| MARB | 5.40 |
| BF | 12.40 |
| REA | 11.41 |
| %LMY | 55.35 |

HBH OBJECTIVE 36U
HBH BURGESS 95Y 1652258
HBH BURGESS 04T

QUAKER HILL OBJECTIVE 3J15 AMF CAF NHF DDF
HBH BURGESS 28R
MVF NEW FRONTIER 016N
KEMBAR BURGESS 16N

| ACT. BW | ACT. WW | ADJ. 205 | ADJ. 365 | EPDS | | | | | | | | |
|---------|---------|----------|----------|------|-----|-----|------|-----|----|-----|----|-----|
| | | | | BW | WW | YW | MILK | TM | | | | |
| 90 | 714 | 707 | 1339 | +4.4 | 33% | +46 | 20% | +75 | 7% | +21 | 7% | +44 |



LOT 113 - HBH BASIL 468B

114

HBH BASIL 4B

MALE HBH 4B 1784579 FEBRUARY 16 2014

TJF AMBUSH 20X
TJF 20X AMBUSH 14Z 1708244
TJF MS FREEDOM 35U

REMINGTON AMBUSH 290T
TJF CHIEF LADY 95U
WESTERN FREEDOM 505
TJF ROSEBUD 90R

| CARCASS | |
|---------|-------|
| MARB | 6.10 |
| BF | 9.60 |
| REA | 11.09 |
| %LMY | 57.95 |

S A V BISMARCK 5682 AMF CAF NHF DDF
HBH GRAND LASS 62Y 1652215
HBH GRAND LASS 17W

G A R GRID MAKER AMF CAF NHF DDF
S A V ABIGALE 0451
HBH GRAND DESIGN 4S
HBH BANDOLIER LASS 25S

| ACT. BW | ACT. WW | ADJ. 205 | ADJ. 365 | EPDS | | | | | | | | |
|---------|---------|----------|----------|------|-----|-----|------|-----|-----|-----|----|-----|
| | | | | BW | WW | YW | MILK | TM | | | | |
| 91 | 766 | 788 | 1278 | +4.2 | 33% | +56 | 21% | +88 | 10% | +22 | 9% | +50 |



LOT 115 - HBH BARON 479B



LOT 116 - ARY BENEFIT 14B

115

HBH BARON 479B

MALE HBH 479B 1784558 FEBRUARY 08 2014

TJF AMBUSH 20X
TJF 20X AMBUSH 14Z 1708244
TJF MS FREEDOM 35U

REMINGTON AMBUSH 290T
TJF CHIEF LADY 95U
WESTERN FREEDOM 505
TJF ROSEBUD 90R

| CARCASS | |
|---------|-------|
| MARB | 4.30 |
| BF | 6.69 |
| REA | 12.40 |
| %LMY | 61.99 |

S A V BISMARCK 5682 AMF CAF NHF DDF
BROOKMORE DAISY 56Y 1603737
BROOKMORE DAISY 259R

G A R GRID MAKER AMF CAF NHF DDF
S A V ABIGALE 0451
SITZ ALLIANCE 6595 DMF AMF CAF NHF DDF
BABA DAISY 24L

| ACT. BW | ACT. WW | ADJ. 205 | ADJ. 365 | EPDS | | | | | | | | |
|---------|---------|----------|----------|------|-----|-----|------|-----|-----|-----|----|-----|
| | | | | BW | WW | YW | MILK | TM | | | | |
| 88 | 718 | 718 | 1353 | +3.6 | 33% | +52 | 22% | +86 | 12% | +23 | 9% | +49 |

116

ARY BENEFIT 14B

MALE ARY 14B 1781182 FEBRUARY 15 2014

TJF AMBUSH 20X
TJF 20X AMBUSH 14Z 1708244
TJF MS FREEDOM 35U

REMINGTON AMBUSH 290T
TJF CHIEF LADY 95U
WESTERN FREEDOM 505
TJF ROSEBUD 90R

| CARCASS | |
|---------|-------|
| MARB | 5.30 |
| BF | 9.05 |
| REA | 10.53 |
| %LMY | 58.06 |

S A V NET WORTH 4200 AMF CAF NHF DDF
N7'S HEROINE 37Y 1616307
N7'S HEROINE 65R

S A V 8180 TRAVELER 004 DMF DMF AMF CAF NHF OSF DDF
S A V MAY 2410
N7'S VISION 9M
LENLOOK HEROINE 28M

| ACT. BW | ACT. WW | ADJ. 205 | ADJ. 365 | EPDS | | | | | | | | |
|---------|---------|----------|----------|------|-----|-----|------|-----|----|-----|----|-----|
| | | | | BW | WW | YW | MILK | TM | | | | |
| 94 | 646 | 668 | 1349 | +4.6 | 19% | +46 | 21% | +78 | 9% | +21 | 9% | +44 |



LOT 117

ARY
BOSSMAN 4B

117

ARY BOSSMAN 4B

MALE ARY 4B 1781172 JANUARY 13 2014

C R A BEXTOR 872 5205 608 AMF CAF NHF DDF
TC ABERDEEN 759 AMF CAF NHF DDF 1485453
TC BLACKBIRD 4034 CAF

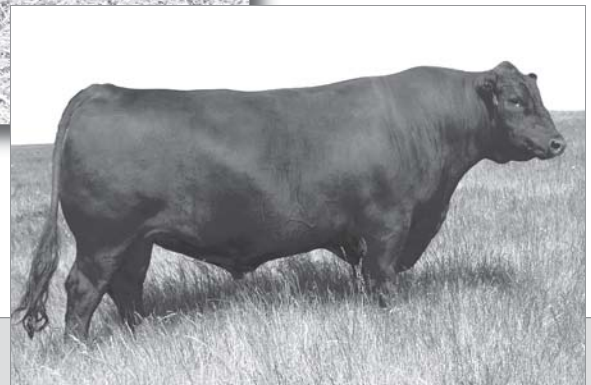
B A R EXT TRAVELER 205 DMF AMF CAF NHF DDF
CRA LADY JAYE 608 498 S EASY
BON VIEW NEW DESIGN 208 AMF CAF NHF DDF
TC BLACKBIRD 1013 DDF

| CARCASS | |
|---------|-------|
| MARB | 5.85 |
| BF | 9.54 |
| REA | 14.73 |
| %LMY | 60.97 |

S A V PIONEER 7301 AMF CAF NHF DDF
BROOKMORE PRINCESS 156Z 1666852
BROOKMORE PRINCESS 58N

S A V FINAL ANSWER 0035 AMF CAF NHF DDF
S A V BLACKBIRD 5297 CAC
MVF STOCKMAN 45H
BROOKMORE PRINCESS 62K

| ACT. BW | ACT. WW | ADJ. 205 | ADJ. 365 | EPDS | | | | | | | | |
|---------|---------|----------|----------|------|-----|-----|------|------|-----|-----|-----|-----|
| | | | | BW | WW | YW | MILK | TM | | | | |
| 79 | 791 | 751 | 1550 | +2.4 | 37% | +59 | 28% | +105 | 24% | +28 | 21% | +58 |



TC ABERDEEN 759

BW +0.8 WW +56 YW +101 Milk +31 TM +59 SC: +0.57



LOT 118 - HBH BREWSTER 425B



LOT 121 - HBH BIGTIME 439B

118

HBH BREWSTER 425B

MALE HBH 425B 1784515 JANUARY 25 2014

CONNEALY ONWARD DMF AMF CAF NHF DDF
SITZ UPWARD 307R DMF AMF CAF NHF DDF 1385926
SITZ HENRIETTA PRIDE 81M

CONNEALY LEAD ON DMF AMF CAF NHF DDF
ALTUNE OF CONANGA 6104
SITZ VALUE 7097 AMF CAF NHF DDF
SITZ HENRIETTA PRIDE 1370

| CARCASS | |
|---------|-------|
| MARB | 5.10 |
| BF | 7.17 |
| REA | 13.40 |
| %LMY | 62.31 |

SITZ ALLIANCE 6595 DMF AMF CAF NHF DDF
BROOKMORE LUCY 119R 1293389
BROOKMORE LUCY 61N

SITZ TRAVELER 8180 AMF CAF NHF DDF
SITZ BARBARAMERE JET 2698
MVF STOCKMAN 45H
KEMBAR LUCY 16F

| ACT. BW | ACT. WW | ADJ. 205 | ADJ. 365 | EPDS | | | | | | | | |
|---------|---------|----------|----------|------|-----|-----|------|-----|-----|-----|-----|-----|
| | | | | BW | WW | YW | MILK | TM | | | | |
| 87 | 732 | 657 | 1381 | +3.0 | 38% | +51 | 30% | +96 | 25% | +26 | 23% | +52 |

121

HBH BIGTIME 439B

MALE HBH 439B 1784524 JANUARY 29 2014

CONNEALY ONWARD DMF AMF CAF NHF DDF
SITZ UPWARD 307R DMF AMF CAF NHF DDF 1385926
SITZ HENRIETTA PRIDE 81M

CONNEALY LEAD ON DMF AMF CAF NHF DDF
ALTUNE OF CONANGA 6104
SITZ VALUE 7097 AMF CAF NHF DDF
SITZ HENRIETTA PRIDE 1370

| CARCASS | |
|---------|-------|
| MARB | 5.20 |
| BF | 8.12 |
| REA | 13.07 |
| %LMY | 61.07 |

TC ABERDEEN 759 AMF CAF NHF DDF
BROOKMORE TIBBIE 212Y 1603928
BROOKMORE TIBBIE 88U

C R A BEXTOR 872 5205 608 AMF CAF NHF DDF
TC BLACKBIRD 4034 CAF
S A V NET WORTH 4200 AMF CAF NHF DDF
BROOKMORE TIBBIE 53P

| ACT. BW | ACT. WW | ADJ. 205 | ADJ. 365 | EPDS | | | | | | | | |
|---------|---------|----------|----------|------|-----|-----|------|------|-----|-----|-----|-----|
| | | | | BW | WW | YW | MILK | TM | | | | |
| 83 | 708 | 683 | 1449 | +1.6 | 37% | +55 | 29% | +107 | 24% | +28 | 22% | +56 |

119

HBH BEDFORD 419B

MALE HBH 419B 1784509 JANUARY 23 2014

CONNEALY ONWARD DMF AMF CAF NHF DDF
SITZ UPWARD 307R DMF AMF CAF NHF DDF 1385926
SITZ HENRIETTA PRIDE 81M

CONNEALY LEAD ON DMF AMF CAF NHF DDF
ALTUNE OF CONANGA 6104
SITZ VALUE 7097 AMF CAF NHF DDF
SITZ HENRIETTA PRIDE 1370

| CARCASS | |
|---------|-------|
| MARB | 5.45 |
| BF | 8.10 |
| REA | 12.51 |
| %LMY | 60.64 |

S A V NET WORTH 4200 AMF CAF NHF DDF
BROOKMORE BELLE 223U 1476223
MADSEN'S BELLE 9N

S A V 8180 TRAVELER 004 DMF AMF CAF NHF OSF DDF
S A V MAY 2410
BJ'S KORONA 3L
BOTANY ANGUS BELLE 93H

| ACT. BW | ACT. WW | ADJ. 205 | ADJ. 365 | EPDS | | | | | | | | |
|---------|---------|----------|----------|------|-----|-----|------|------|-----|-----|-----|-----|
| | | | | BW | WW | YW | MILK | TM | | | | |
| 80 | 717 | 638 | 1347 | +1.6 | 38% | +53 | 29% | +103 | 24% | +26 | 22% | +53 |

122

HBH BJORN 403B

MALE HBH 403B 1784493 JANUARY 12 2014

CONNEALY ONWARD DMF AMF CAF NHF DDF
SITZ UPWARD 307R DMF AMF CAF NHF DDF 1385926
SITZ HENRIETTA PRIDE 81M

CONNEALY LEAD ON DMF AMF CAF NHF DDF
ALTUNE OF CONANGA 6104
SITZ VALUE 7097 AMF CAF NHF DDF
SITZ HENRIETTA PRIDE 1370

| CARCASS | |
|---------|-------|
| MARB | 5.30 |
| BF | 8.10 |
| REA | 12.01 |
| %LMY | 60.24 |

S A V 004 DENSITY 4336 AMF CAF NHF DDF
BROOKMORE ALETA 56W 1513406
MADSEN'S ALETA 7M

S A V 8180 TRAVELER 004 DMF AMF CAF NHF OSF DDF
S A V MAY 7238 CAF DDF
BENCHMARK MAGIC MAN 007
BROOKMORE ALETA 83K

| ACT. BW | ACT. WW | ADJ. 205 | ADJ. 365 | EPDS | | | | | | | | |
|---------|---------|----------|----------|------|-----|-----|------|------|-----|-----|-----|-----|
| | | | | BW | WW | YW | MILK | TM | | | | |
| 80 | 802 | 684 | 1268 | +2.1 | 38% | +59 | 29% | +110 | 24% | +24 | 22% | +54 |

120

HBH BRANDON 463B

MALE HBH 463B 1784547 TWIN FEBRUARY 04 2014

CONNEALY ONWARD DMF AMF CAF NHF DDF
SITZ UPWARD 307R DMF AMF CAF NHF DDF 1385926
SITZ HENRIETTA PRIDE 81M

CONNEALY LEAD ON DMF AMF CAF NHF DDF
ALTUNE OF CONANGA 6104
SITZ VALUE 7097 AMF CAF NHF DDF
SITZ HENRIETTA PRIDE 1370

| CARCASS | |
|---------|-------|
| MARB | 5.15 |
| BF | 7.62 |
| REA | 13.92 |
| %LMY | 62.27 |

S A V HERITAGE 6295 AMF CAF NHF DDF
BROOKMORE LUCY 138W 1513145
KEMBAR LUCY 16F

CAR DUKE 104
S A V BLACKCAP MAY 4136 CAF
MVF LINEDRIVE 40Y
KEMBAR LUCY 3Y

| ACT. BW | ACT. WW | ADJ. 205 | ADJ. 365 | EPDS | | | | | | | | |
|---------|---------|----------|----------|------|----|-----|------|------|---|-----|---|-----|
| | | | | BW | WW | YW | MILK | TM | | | | |
| 70 | 750 | 698 | 1395 | +2.4 | P | +56 | P | +105 | P | +27 | P | +55 |



SITZ UPWARD 307R

BW +2.5 WW +71 YW +132 Milk +38 TM +74 SC: +1.65

123

HBH BINGO 444B

MALE HBH 444B 1784529 TWIN JANUARY 30 2014

CONNELLY ONWARD DMF AMF CAF NHF DDF
SITZ UPWARD 307R DMF AMF CAF NHF DDF 1385926
SITZ HENRIETTA PRIDE 81M

CONNELLY LEAD ON DMF AMF CAF NHF DDF
ALTUNE OF CONANGA 6104
SITZ VALUE 7097 AMF CAF NHF DDF
SITZ HENRIETTA PRIDE 1370

S A V FINAL ANSWER 0035 AMF CAF NHF DDF
BROOKMORE ELLEN 37W 1516058
BROOKMORE ELLEN 51S

SITZ TRAVELER 8180 AMF CAF NHF DDF
S A V EMULOUS 8145 CAF
L T 598 BANDO 9074 AMF CAF NHF DDF
BROOKMORE ELLEN 180P

| CARCASS | |
|---------|-------|
| MARB | 5.70 |
| BF | 9.05 |
| REA | 12.30 |
| %LMY | 59.50 |

| ACT. BW | ACT. WW | ADJ. 205 | ADJ. 365 | EPDS | | | | |
|---------|---------|----------|----------|--------|-------|--------|-------|-----|
| | | | | BW | WW | YW | MILK | TM |
| 63 | 726 | 662 | 1372 | +1.0 P | +62 P | +110 P | +29 P | +59 |



LOT 123 - HBH BINGO 444B

124

HBH BARDO 429B

MALE HBH 429B 1814573 TWIN JANUARY 27 2014

EXAR WORLDWIDE 9600B DMF CAF DDF
EXAR GRIT 1025B AMF CAF NHF DDF 1760627
EXAR LADY BLANCHE 9739 NHF

EXAR SPARTAN 6225 AMF CAF NHF DDF
DIXIE ERICA OF RR 6289 DDF
EXAR 263C AMF CAF NHF DDF
EXAR LADY BLANCHE 372 AMF CAF NHF

HBH OBJECTIVE 36U
HBH KEMBAR LUCY 10Y 1652250
KEMBAR LUCY 59P

QUAKER HILL OBJECTIVE 3J15 AMF CAF NHF DDF
HBH BURGESS 28R
BUSHS GRAND DESIGN AMF CAF NHF DDF
KEMBAR LUCY 60M

| CARCASS | |
|---------|-------|
| MARB | 4.45 |
| BF | 6.22 |
| REA | 11.58 |
| %LMY | 61.80 |

| ACT. BW | ACT. WW | ADJ. 205 | ADJ. 365 | EPDS | | | | |
|---------|---------|----------|----------|--------|-------|-------|-------|-----|
| | | | | BW | WW | YW | MILK | TM |
| 65 | 685 | 609 | 1291 | +3.1 P | +53 P | +92 P | +21 P | +48 |

CATTLEMAN'S CONNECTION ONLINE
 Catalog @ www.HendersonCattle.com
 Bid online @ www.DLMS.ca



LOT 125 - ARY BRAVIA 7B

125

ARY BRAVIA 7B

MALE ARY 7B 1781176 JANUARY 18 2014

EXAR WORLDWIDE 9600B DMF CAF DDF
EXAR GRIT 1025B AMF CAF NHF DDF 1760627
EXAR LADY BLANCHE 9739 NHF

EXAR SPARTAN 6225 AMF CAF NHF DDF
DIXIE ERICA OF RR 6289 DDF
EXAR 263C AMF CAF NHF DDF
EXAR LADY BLANCHE 372 AMF CAF NHF

STUART DESTINATION 32S
GERLEI MAYFLOWER 52U 1458647
EASTONDALE MAYFLOWER 19'01

S A V 004 DENSITY 4336 AMF CAF NHF DDF
KBJ MISS ROSE 802G
STEVENSON BRUNO 561G CAF NHF DDF
KENWAW MAYFLOWER 38E

| CARCASS | |
|---------|-------|
| MARB | 5.95 |
| BF | 8.59 |
| REA | 12.93 |
| %LMY | 60.47 |

| ACT. BW | ACT. WW | ADJ. 205 | ADJ. 365 | EPDS | | | | |
|---------|---------|----------|----------|----------|---------|---------|---------|-----|
| | | | | BW | WW | YW | MILK | TM |
| 87 | 780 | 681 | 1401 | +2.1 36% | +51 27% | +92 18% | +17 11% | +43 |



EXAR GRIT 1025B

BW +2.1 WW +67 YW +118 Milk +26 TM +60 SC +1.16

EXAR Grit 1025B excels in performance and eye appeal ranks in the top 2% of the breed for weaning weight and yearling weight, top 20% for milk, top 3% for \$W and \$F and top 15% for \$B. This great young sire was lost at an early age but has done a great job and is highly regarded.

2 SONS SELL



LOT 126

HBH
BLACKOUT 423B

126

HBH BLACKOUT 423B

MALE HBH 423B 1784513 JANUARY 25 2014

CONNEALY CONSENSUS DDF
CONNEALY CONSENSUS 7229 AMF CAF NHF DDF 1593730
BLUE LILLY OF CONANGA 16 CAF

KMK ALLIANCE 6595 187 AMF CAF NHF DDF
BLINDA OF CONANGA 004
WOODHILL ADMIRAL 77K AMF CAF NHF DDF
BLUE CASH OF CONANGA 6020 CAF

| CARCASS | |
|---------|-------|
| MARB | 6.10 |
| BF | 10.95 |
| REA | 13.26 |
| %LMY | 58.33 |

B C MATRIX 4132 AMF CAF NHF DDF
BROOKMORE DAISY 246U 1441512
BROOKMORE DAISY 259R

O C C EMBLAZON 854E DMF AMF CAF NHF OSF DDF
CAF PURE PRIDE EXT 99
SITZ ALLIANCE 6595 DMF AMF CAF NHF DDF
BABA DAISY 24L

| ACT. BW | ACT. WW | ADJ. 205 | ADJ. 365 | EPDS | | | | | | | | |
|---------|---------|----------|----------|------|-----|-----|------|-----|-----|-----|-----|-----|
| | | | | BW | WW | YW | MILK | TM | | | | |
| 80 | 809 | 724 | 1401 | +1.5 | 38% | +57 | 29% | +95 | 24% | +27 | 22% | +56 |



LOT 127 - HBH BOOSTER 422B

127

HBH BOOSTER 422B

MALE HBH 422B 1784512 JANUARY 24 2014

CONNEALY CONSENSUS DDF
CONNEALY CONSENSUS 7229 AMF CAF NHF DDF 1593730
BLUE LILLY OF CONANGA 16 CAF

KMK ALLIANCE 6595 187 AMF CAF NHF DDF
BLINDA OF CONANGA 004
WOODHILL ADMIRAL 77K AMF CAF NHF DDF
BLUE CASH OF CONANGA 6020 CAF

| CARCASS | |
|---------|-------|
| MARB | 5.80 |
| BF | 8.59 |
| REA | 13.18 |
| %LMY | 60.68 |

S A V BISMARCK 5682 AMF CAF NHF DDF
BROOKMORE LUCY 124Y 1603950
BROOKMORE LUCY 187U

G A R GRID MAKER AMF CAF NHF DDF
S A V ABIGALE 0451
S A V NET WORTH 4200 AMF CAF NHF DDF
BROOKMORE LUCY 143L

| ACT. BW | ACT. WW | ADJ. 205 | ADJ. 365 | EPDS | | | | | | | | |
|---------|---------|----------|----------|------|-----|-----|------|------|-----|-----|-----|-----|
| | | | | BW | WW | YW | MILK | TM | | | | |
| 92 | 845 | 793 | 1541 | +4.6 | 37% | +66 | 29% | +108 | 24% | +29 | 21% | +62 |

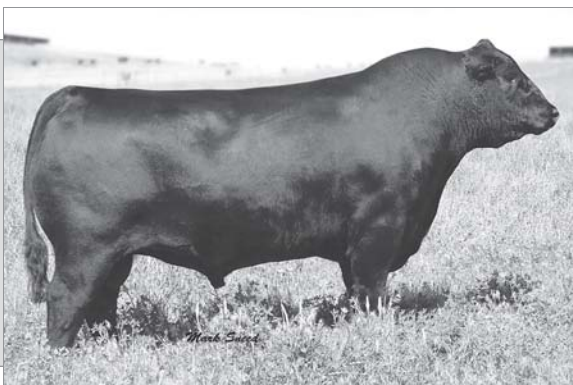
CONNEALY CONSENSUS 7229

BW +2.2 WW +634 YW +104 Milk +33 TM +65 SC: +0.97

BW: 71 lbs. Adj. 205D: 817 lbs. Adj. 365D: 1420 lbs.

Connealy Consensus 7229 is a bull with powerful stature, strong EPDS and outstanding phenotype. He has proven a reliable sire producing low birth with excellent weaning, yearling weights and marbling. Consensus 7229 has sired more high selling sons than any bull in the business and his daughters are top prospects.

7 SONS SELL





LOT 128 - HBH BLACKJACK 18B



LOT 131 - ARY BOOMER 5B

128

HBH BLACKJACK 18B

MALE HBH 18B 1784589 FEBRUARY 19 2014

CONNEALY CONSENSUS DDF
CONNEALY CONSENSUS 7229 AMF CAF NHF DDF 1593730
BLUE LILLY OF CONANGA 16 CAF

KMK ALLIANCE 6595 187 AMF CAF NHF DDF
BLINDA OF CONANGA 004
WOODHILL ADMIRAL 77K AMF CAF NHF DDF
BLUE CASH OF CONANGA 6020 CAF

| CARCASS | |
|---------|-------|
| MARB | 5.75 |
| BF | 8.57 |
| REA | 13.15 |
| %LMY | 60.67 |

SITZ UPWARD 307R DMF AMF CAF NHF DDF
BROOKMORE MAXIE 166Y CAF 1658725
BROOKMORE MAXIE 219S CAC

CONNEALY ONWARD DMF AMF CAF NHF DDF
SITZ HENRIETTA PRIDE 81M
S A F 598 BANDO 5175 AMF CAC DDF
BATTLE LAKE MAXIE 9N

| ACT. BW | ACT. WW | ADJ. 205 | ADJ. 365 | EPDS | | | | | | | | |
|---------|---------|----------|----------|------|-----|-----|------|------|-----|-----|-----|-----|
| | | | | BW | WW | YW | MILK | TM | | | | |
| 89 | 729 | 761 | 1393 | +3.4 | 37% | +58 | 29% | +103 | 24% | +33 | 21% | +62 |

131

ARY BOOMER 5B

MALE ARY 5B 1781173 JANUARY 15 2014

G A R GRID MAKER AMF CAF NHF DDF
S A V BISMARCK 5682 AMF CAF NHF DDF 1369591
S A V ABIGALE 0451

G D A R TRAVELER 044 AMF CAF NHF DDF
G A R PRECISION 2536 AMC NHF
SCHOENES FIX IT 826 AMF CAF NHF DDF
S A V ABIGALE 6062

| CARCASS | |
|---------|-------|
| MARB | 5.65 |
| BF | 11.43 |
| REA | 14.84 |
| %LMY | 59.13 |

S A V 004 DENSITY 4336 AMF CAF NHF DDF
GREENBUSH TIBBIE 58Z 1682237
GREENBUSH TIBBIE 22K

S A V 8180 TRAVELER 004 DMF DMF AMF CAF NHF OSF DDF
S A V MAY 7238 CAF DDF
AHVA BARDOLIER 36H
GREENBUSH TIBBIE 25F

| ACT. BW | ACT. WW | ADJ. 205 | ADJ. 365 | EPDS | | | | | | | | |
|---------|---------|----------|----------|------|-----|-----|------|-----|-----|-----|-----|-----|
| | | | | BW | WW | YW | MILK | TM | | | | |
| 78 | 727 | 702 | 1374 | +2.0 | 37% | +51 | 28% | +84 | 22% | +18 | 21% | +44 |

129

HBH BACARDI 416B

MALE HBH 416B 1784507 JANUARY 22 2014

CONNEALY CONSENSUS DDF
CONNEALY CONSENSUS 7229 AMF CAF NHF DDF 1593730
BLUE LILLY OF CONANGA 16 CAF

KMK ALLIANCE 6595 187 AMF CAF NHF DDF
BLINDA OF CONANGA 004
WOODHILL ADMIRAL 77K AMF CAF NHF DDF
BLUE CASH OF CONANGA 6020 CAF

| CARCASS | |
|---------|-------|
| MARB | 5.60 |
| BF | 10.48 |
| REA | 13.39 |
| %LMY | 58.92 |

SITZ UPWARD 307R DMF AMF CAF NHF DDF
BROOKMORE ALETA 145Y 1633901
BROOKMORE ALETA 172T CAF

CONNEALY ONWARD DMF AMF CAF NHF DDF
SITZ HENRIETTA PRIDE 81M
S A F 598 BANDO 5175 AMF CAC DDF
BROOKMORE ENCHANTRESS 26P

| ACT. BW | ACT. WW | ADJ. 205 | ADJ. 365 | EPDS | | | | | | | | |
|---------|---------|----------|----------|------|-----|-----|------|------|-----|-----|-----|-----|
| | | | | BW | WW | YW | MILK | TM | | | | |
| 81 | 820 | 764 | 1439 | +2.2 | 37% | +66 | 29% | +115 | 24% | +31 | 21% | +64 |

132

HBH BUSTER 37B

MALE HBH 37B 1784607 MARCH 05 2014

MJ ESCALADE 2W AMF NHF
J SQUARE S ESCALADE 12Y 1601294
NORTHERN VIEW BLACKCAP 3U

REMITALL H RACHIS 21R AMF NHF OSF
REMITALL ANNIE 543T
NORTHERN VIEW QUANTUM 86P
NORTHERN VIEW BLACKCAP 30N

| CARCASS | |
|---------|-------|
| MARB | 4.80 |
| BF | 6.19 |
| REA | 12.76 |
| %LMY | 62.79 |

S A V BISMARCK 5682 AMF CAF NHF DDF
GREENBUSH TIBBIE 15W 1510980
GREENBUSH TIBBIE 49T

G A R GRID MAKER AMF CAF NHF DDF
S A V ABIGALE 0451
L T 598 BANDO 9074 AMF CAF NHF DDF
GREENBUSH TIBBIE 102R

| ACT. BW | ACT. WW | ADJ. 205 | ADJ. 365 | EPDS | | | | | | | | |
|---------|---------|----------|----------|------|-----|-----|------|-----|-----|-----|-----|-----|
| | | | | BW | WW | YW | MILK | TM | | | | |
| 80 | 757 | 729 | 1489 | +1.6 | 32% | +47 | 21% | +84 | 12% | +24 | 10% | +48 |

130

HBH BRADDOCK 443B

MALE HBH 443B 1784528 JANUARY 30 2014

CONNEALY CONSENSUS 7229 AMF CAF NHF DDF
EXAR SIGNIFICANT 1769B AMF CAF DDF 1707960
SITZ HENRIETTA PRIDE 643T

CONNEALY CONSENSUS DDF
BLUE LILLY OF CONANGA 16 CAF
CONNEALY ONWARD DMF AMF CAF NHF DDF
SITZ HENRIETTA PRIDE 81M

| CARCASS | |
|---------|-------|
| MARB | 4.40 |
| BF | 8.18 |
| REA | 13.81 |
| %LMY | 61.61 |

S A V PIONEER 7301 AMF CAF NHF DDF
BROOKMORE KARAMA 183X 1558389
BROOKMORE KARAMA 175U

S A V FINAL ANSWER 0035 AMF CAF NHF DDF
S A V BLACKBIRD 5297 CAC
BUSHES STRUT 756 AMF CAF NHF DDF
BROOKMORE KARAMA 161K

| ACT. BW | ACT. WW | ADJ. 205 | ADJ. 365 | EPDS | | | | | | | | |
|---------|---------|----------|----------|------|-----|-----|------|------|-----|-----|-----|-----|
| | | | | BW | WW | YW | MILK | TM | | | | |
| 81 | 780 | 757 | 1369 | +2.4 | 37% | +58 | 28% | +101 | 22% | +27 | 13% | +56 |



LOT 132 - HBH BUSTER 37B



LOT 133 - HBH BULLSEYE 45B



LOT 134 - HBH BASIC 30B

133

HBH BULLSEYE 45B

MALE HBH 45B 1808744 MARCH 15 2014

S CHISUM 6175 AMF CAF NHF DDF
REMITALL F CHISELED 132Z 1670435
 REMINGTON BEAUTY 14U

S ALLIANCE 3313 AMF
 S GLORIA 464
 CUDLOBE YELLOWSTONE 80M
 F V LT BEAUTY 479N

| CARCASS | |
|---------|-------|
| MARB | 4.65 |
| BF | 10.00 |
| REA | 13.66 |
| %LMY | 59.63 |

S A V FINAL ANSWER 0035 AMF CAF NHF DDF
BROOKMORE TIBBIE 207Y 1603912
 BROOKMORE TIBBIE 242T AMF

SITZ TRAVELER 8180 AMF CAF NHF DDF
 S A V EMULOUS 8145 CAF
 BROOKMORE DIRECTION 208R
 BROOKMORE TIBBIE 63R CAC

| ACT. BW | ACT. WW | ADJ. 205 | ADJ. 365 | EPDS | | | | |
|---------|---------|----------|----------|----------|---------|---------|---------|-----|
| | | | | BW | WW | YW | MILK | TM |
| 86 | 701 | 813 | 1399 | +2.5 34% | +58 23% | +93 14% | +21 12% | +50 |

134

HBH BASIC 30B

MALE HBH 30B 1808746 FEBRUARY 27 2014

S CHISUM 6175 AMF CAF NHF DDF
REMITALL F CHISELED 132Z 1670435
 REMINGTON BEAUTY 14U

S ALLIANCE 3313 AMF
 S GLORIA 464
 CUDLOBE YELLOWSTONE 80M
 F V LT BEAUTY 479N

| CARCASS | |
|---------|-------|
| MARB | 4.50 |
| BF | 10.07 |
| REA | 13.79 |
| %LMY | 59.66 |

S A V BISMARCK 5682 AMF CAF NHF DDF
BROOKMORE MAIDEN 81Y 1603926
 BROOKMORE MAIDEN 72U

G A R GRID MAKER AMF CAF NHF DDF
 S A V ABIGALE 0451
 SITZ ALLIANCE 6595 DMF AMF CAF NHF DDF
 BROOKMORE MAIDEN 114R

| ACT. BW | ACT. WW | ADJ. 205 | ADJ. 365 | EPDS | | | | |
|---------|---------|----------|----------|----------|---------|---------|---------|-----|
| | | | | BW | WW | YW | MILK | TM |
| 90 | 680 | 736 | 1536 | +3.4 34% | +51 23% | +91 14% | +22 12% | +48 |

CATTLEMAN'S CONNECTION

Thank You

We appreciate your support
 over 20 years of bull sales!

GENERAL INFORMATION

CATTLE INSPECTION: All carry permanent identity tags, corresponding to Sale Lot Numbers. All shall be available for inspection prior to sale.

HEALTH STATUS: The bulls offered for the sale have been vaccinated for IBR, PI-3, BRSV, 8 WAY BLACK LEG, HEAMOPHILUS, SOMNUS AND PASTEURELLA HAEMOLYTICA. All were treated for internal and external parasites.

ALL CATTLE ARE SOLD: Subject to such tests as required for export under regulations of the Health of Animals Branch, Department of Agriculture for Canada - those corresponding to Bureau of Animal Industry requirements.

BREEDING GUARANTEE: All cattle are sound and right, and all with a responsible breeder guarantee of satisfaction. In the event of any unlikely dispute, the regular terms and conditions, standard with the Canadian Aberdeen Angus Association shall apply.

HOLDING AND SHIPMENTS: Approximately one week is required for export transfers and other documents to be processed. Export animals will be held at no charge and under excellent care. Joint export shipping arrangements to attain minimum shipping cost will gladly be made if instructions to that effect are provided to clerk of the sale when settlement is made.

INTEREST: The Cattleman's Connection Consignors reserve the right to retain an interest in any of the animals selling.

INSURANCE: Ownership risk to purchaser commences when the Auctioneer's hammer falls. Livestock coverage will be available at the Clerk's desk from the appointed representatives on sale day, also from the Sales Management at any time.

TERMS OF SALE: Are cash or cheque at par, payable to Clerks of the Sale on Sale Day. US funds accepted at the current rate of exchange. No release will be given until satisfactory settlement has been made. We reserve the right to withhold animals from export shipment for whom payments have not been received prior to departure times.

ALL PERSONS who attend the Sale do so at their own risk, and the Owners, Sale Management and Sale Staff assume no liability, legal or otherwise, for property loss or for any accidents that may occur.

CAN'T MAKE THE SALE?
 Your next bull is just a phone call
 or mouse click away!

SPECIAL OFFERS TO BUYERS

TRUCKING

Cattleman's Connection consignors will deliver bulls at cost to central stockyard locations in Canada. Cattleman's Connection Consignors will be more than willing to assist you in getting your bull delivered in a timely fashion and as affordable as possible.

SIGHT UNSEEN PURCHASE PLAN

If you are unable to attend sale day, you may call or send bids to the consignors or any member of the sales management team. Those who are interested in this plan are urged to contact anyone of the consignors to discuss your bull requirements and determine a budget. Every effort will be made to buy you the right bull or bulls, at the right price to make you a repeat customer. If for any reason you are not satisfied with any of the cattle you purchased on order, you are under no obligation to accept them.

**SIGHT UNSEEN
PURCHASE
PLAN**

WINTERING POLICY

Wintering of bulls is free until April 1st, 2015. We ask purchasers to state their intentions for wintering at the time of settlement. *We strongly encourage you to insure your bulls under this policy.*

CATTLEMAN'S CONNECTION BULL WARRANTY

Cattleman's Connection guarantees to sell you a bull that is structurally sound, a bull that has passed a semen test and a breeding soundness evaluation by a licensed veterinarian. Should any Cattleman's Connection bull fail to be a satisfactory breeder - unable to physically service a cow or heifer - he will be replaced with a bull of equal value. Should this not be possible, an adjustment will be made to reflect the value of the bull in question, or a credit will be given towards the purchase of another bull.

IN SHORT, WE GUARANTEE TO PROVIDE YOU WITH A SOUND, BREEDING BULL.

We, however, will not provide replacement or adjustment for physical injury or mismanagement. Bearing this in mind, we stress the importance of insurance on your bull. At no time shall the seller's liability exceed the purchase price of the bull. Should you have a problem with your bull, call

us right away. We will work with you to make sure you are satisfied with your Cattleman's Connection bull.



Brookmore & HBH Farms use Canadian Angus Performance Program whole herd reporting.

UNDERSTANDING ULTRASOUND

The first thing producers want to know about ultrasound is: How accurate is it? The answer to the question depends on who does the actual scanning of the animals and who interprets the images. Ultrasound data in this catalogue was collected and analyzed by a technician that is certified by AUP and CUP. This means that this technician has met the standards set by many breed associations. The accuracy, although not perfect, is high enough that bulls selected based on ultrasound, results in positive genetic change in progeny carcass traits. Heritability for carcass traits are moderate to high, which is slightly higher than birth weights, weaning weights, and yearling weights.

MARBLING (MARB) - Marbling is the best indicator that we have to tell us what kind of eating experience we will have when eating beef. Extensive research shows that average AAA and above marbling produces the most satisfied consumers. As marbling increases so does the juiciness, the flavorfulness, and the tenderness. This may not always be true but for the most part AAA marbling produces more satisfied customers than does A or AA marbling carcasses.

| CARCASS | |
|---------|-------|
| MARB | 5.70 |
| BF | 5.71 |
| REA | 13.38 |
| %LMY | 63.78 |

| | | |
|-------------|------------|----------|
| 3.00 - 3.99 | Single A | Standard |
| 4.00 - 4.99 | Double AA | Select |
| above 5.00 | Triple AAA | Choice |

BACK FAT (BF mm)

Fat depth influences lean meat yield. Fat bulls have less lean meat/muscle in the carcass. The fat measurement also gives an indication of the bulls fleshing ability. Calves from a bull with very little fat may finish too slowly in the feedlot. Body condition score (fat depth) in females is related to their ability to reach puberty at an early age, produce milk, rebreed, and maintain a short calving interval. On the other hand, bulls carrying excessive fat may suffer reduced fertility.

RIBEYE AREA (REA in²)

The REA is the largest muscle in the body at birth, so REA gives an indication of overall carcass muscling (measured in inches)

CUTABILITY (% LMY)

Cutability is the percentage lean meat yield in the carcass. Yield grade is an important factor in both Canada and the U.S.A. Producing calves with a high genetic potential for this trait can be an important objective of a breeding program. Back fat will reduce yield by 7 to 8 times what REA will increase yield.

SUMMARY

Like all traits we should avoid the extremes. Moderation is the key. As producers we need to evaluate our own females and then decide what kind of progeny we want to produce and this should dictate what kind of sire we want to purchase.

**All Bulls Ultrasounded by Rod Wendorff on Jan. 16, 2015
(AUP - CUP Certified)**

EXPECTED PROGENY DIFFERENCES - EPDS

EPDs are an estimate of how future progeny of each sire can be expected to perform in each of the traits listed. EPDs are followed by % Accuracy - the higher the Accuracy, the higher the reliability.

BW: Birth Weight EPD - expressed in pounds, is a predictor of a sire's ability to transmit birth weight to his progeny compared to that of other sires.

WW: Weaning Weight EPD - expressed in pounds, is a predictor of a sire's ability to transmit weaning growth to his progeny compared to that of other sires. Weaning weight is an indicator of growth from birth to weaning (205 days of age). The calf's growth during this period is influenced by its own ability to grow plus its mother's maternal abilities.

YW: Yearling Weight EPD - expressed in pounds, is a predictor of a sire's ability to transmit yearling growth to his progeny compared to that of other sires.

MILK: Milk EPD - is an indicator of milking ability in daughters. It represents the differences in weaning weights of calves due to the amount of milk produced by their mothers. It is expressed in pounds of calf weaned.

TM: Total Maternal EPD - is a combination of the weaning weight and milk EPDs. It is calculated as: 1/2 Weaning Weight EPD + Milk EPD = Total Maternal. This EPD represents the differences in weaning weights between calves due to mothering and milking ability of their dams.

AVERAGE EPDS - ALL CANADIAN BLACK ANGUS BORN IN 2014

| ACT. BW | ACT. WW | ADJ. 205 | ADJ. 365 | EPDS | | | | |
|---------|---------|----------|----------|------|-----|-----|------|-----|
| | | | | BW | WW | YW | MILK | TM |
| | | | | +2.7 | +45 | +79 | +19 | +41 |

DjH Douglas J. Henderson
& Associates Ltd.

P.O. Box 5900, Lacombe, Alberta T4L 1X4

| | | | |
|---------------------------------|---------------------|--|----------------------------|
| R P G / P R G | CANADA |  | POSTES |
| | POST | | CANADA |
| | Postage paid | | Port payé |
| | Addressed Admail | | Médiaposte avec adresse |
| | 03683273 | | |

RETURN POSTAGE GUARANTEED
PORT DE RETOUR GARANTI

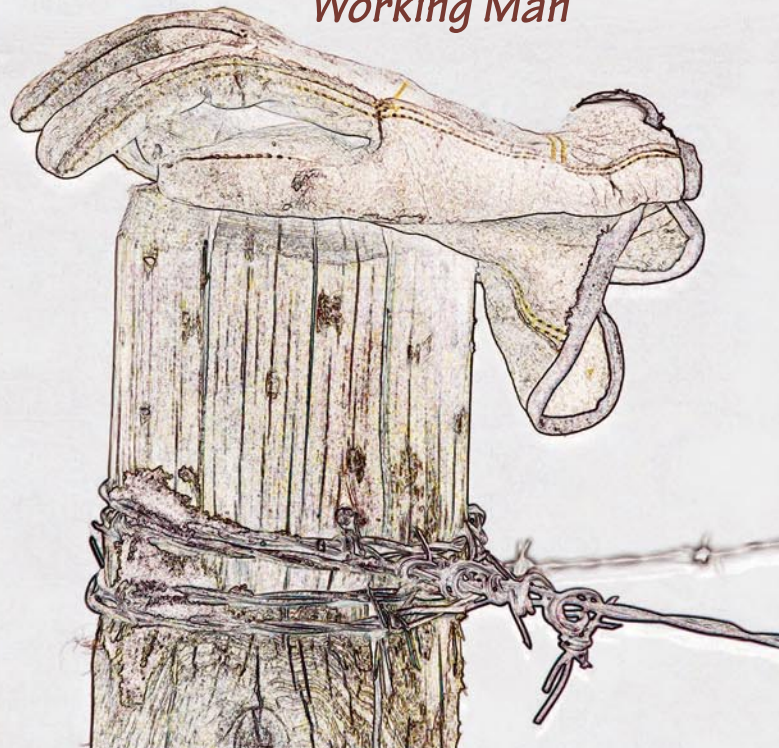


BROOKMORE —ANGUS—

HBH FARMS INC.
AIREY CATTLE CO.

20th Anniversary CATTLEMAN'S CONNECTION Black Angus Bull Sale

*Bulls for the
Working Man*



FRIDAY, MARCH 6, 2015