



BUCK LAKE RANCH

ESTABLISHED IN 1906

2nd Annual Production Sale

**Saturday, March 31, 2012, 1:00pm
Calgary Stockyards,
Strathmore, AB**

www.BUCKLAKERANCH.ca

SATURDAY, MARCH 31, 2012 ~ 1 P.M. ~ CALGARY STOCKYARDS, STRATHMORE, AB.

BUCK LAKE RANCH

2nd Annual Production Sale

SCHEDULE OF EVENTS

9AM - IPM -Viewing of Livestock

12:00 NOON - Steak lunch provided by the Schmitke family

1 PM - AUCTION SALE

End of Auction - Door Prize Draw

SALE DAY PHONES:

Sale Manager, Ben Payne (403) 633-4175

Auctioneer, Don Raffan (250) 558-6789

TEAM, Jason Danard (403) 519-8916

Steve Gibson (250) 878-0758

Wayne Fipke (250) 862-6800

Robert Schmitke (403) 627-8070

AUCTIONEER:

DONALD RAFFAN (250) 558-6789

RINGMEN:

DEAN EDGE (403) 704-0280

CRAIG FLEWING (403) 556-0515

SALE MANAGER:

BEN PAYNE (403) 633-4175

FACILITY AND SALES MANAGEMENT BY:

CALGARY STOCKYARDS

OFFICE (403)234-7429

BRYAN DENARD cell (403) 934-1644

HELD AT THE CALGARY STOCKYARDS, STRATHMORE, AB

Buyers unable to attend the sale may send their bids to the Sale Manager, Auctioneer or a TEAM representative.



BROADCAST LIVE ON INTERNET

SALE LOCATION

From Calgary, approximately 45kms east along Highway 1, at the Strathmore Auction site.

ACCOMMODATIONS:

Travelodge
50 Ridge Road, Strathmore, AB
(403) 901-0000

Days Inn
400 Ranch Market, Strathmore AB
(403) 934-1134

SALE BOOK DESIGN - Kendra Roberts, kendradesign.ca

BULL PHOTOS - Grant Ralston associate Craig Scott

BULL FITTING - Megan Bond

COMMENTS FROM THE SALE MANAGER

The Calgary Stock Yards, the TEAM auction and myself are proud and excited at the opportunity to host the second annual Buck Lake Ranch bull sale. It's an exciting time for all of us involved in the cattle business and in particular the cow calf operators have something to look forward to again! The Buck Lake Ranch provides a great opportunity for both the pure bred and commercial operators to take advantage of some industry leading, performance enhancing genetics in both the bulls and the females. And better yet the ownership and management of the Buck Lake Ranch are committed to a proactive service based program which will continue to insure a superior product that modern ranch economics demand. In closing join us on March 31st, check out the catalogue, and get in touch with any one of us if you want to view the bulls prior to sale day. We are happy to help and excited to see you there. *Sincerely Ben Payne*

TERMS AND CONDITIONS: All cattle sell under the standard Terms and Conditions set out by the Canadian Angus Association.

REGISTRATION PAPERS: All animals selling are registered and will be transferred only upon full payment

CATTLE INSPECTIONS: All carry permanent identity tags, corresponding to Sale Lot numbers. All shall be available for inspection prior to the sale.

ALL CATTLE ARE SOLD: Subject to tests required for export by the Canadian Food Inspection Agency, Health of Animals Act and Regulations.

ANNOUNCEMENTS: Errors discovered in the catalogue will be corrected by announcements from the auction stand at sale time and such corrections will take precedence over the printed material in the catalogue.

RELEASES: No cattle will be released until the conclusion of the sale. Each animal becomes the risk of the purchaser as soon as sold.

INSURANCE: Ownership risk to purchasers commences when the Auctioneer's hammer falls. Livestock coverage should be available from insurance representatives on sale day.

TERMS OF SETTLEMENT: All animals lots are sold at auction on a cash basis unless prior credit arrangements are made with the vendor directly. Payment shall be cash or cheque to clerks of the sale on sale day. U.S. funds will be accepted at the current rate of exchange. No release will be given until satisfactory settlement has been made. We reserve the right to withhold animals from shipment for whom payments have not been received prior to departure times.

EVERY ANIMAL SELLS to the highest bidder, and in the case of disputes, the auctioneer's decision will be final.

ALL PERSONS who attend the Sale do so at their own risk and the owners, livestock auction, management and staff assume no liability, legal or otherwise, for property loss or for any accidents that may occur.

GENETIC DEFECTS:

All buck Lake cattle offered in its production sale have been tested FREE of or have pedigrees cleared free of genetic defects, AM NH, AND CA

BUCK LAKE RANCH BULL GUARANTEE: Buck Lake guarantees to provide buyers with a sound, fertile bull capable of servicing a reasonable number of cows. Should a Buck Lake Bull fail to be a satisfactory breeder, he will be replaced with a bull of equal value, or a credit will be given towards the purchase of another Buck Lake bull less salvage value. This guarantee does not cover accidents, mismanagement or physical injury and is limited to the original selling price. It is also limited to 6 months from date of purchase.

A DISCOUNT OF \$50 per animal will be deducted from the sale price at the settlement cashier for buyers who haul their own purchases.

LOADING OUT: Please bring your own truck and trailer, loading out will be available after sale.

TRANSPORT: of animals shall be the responsibility of the buyers of that animal. PLEASE NOTE that all cattle need to be moved from the stockyards by Monday, April 2, 2012 unless arrangements are made directly with the Calgary Sockyards. Transport providers will be lined up and will gladly assist in organizing your trucking needs.

If requested, **BUCK LAKE RANCH** will deliver properly insured animals, **AT NO CHARGE** to **ALBERTA** buyers from locations south of Edmonton, subject to having proper receiving yards to off load and reload other bulls and subject to having exact route maps or directions from the buyer.

VENDOR CONTACT INFO

STEVE AND JOAN GIBSON

585 BEAVER CREEK ROAD

BEAVERDELL, B.C. V0H 1A0

PHONE/FAX (250) 484-5470

WWW.BUCKLAKERANCH.CA

EMAIL STEVE : SJGIBSON99@GMAIL.COM

CELL PHONE ON SALE DAY (250)878-0758

EMAIL WAYNE : WFIPKE@SHAW.CA

CELL PHONE ON SALE DAY (250) 862-6800

**Ultrasound and Performance,
weights and Scrotal information
will be available as a supplemental
sheet at the sale and as soon as
available will be posted at
www.bucklakeranch.ca**

BUCK LAKE RANCH

ESTABLISHED IN 1906

THE FAMILIES AND FRIENDS OF BUCK LAKE RANCH WELCOME YOU TO OUR SECOND ANNUAL PRODUCTION SALE

THE BULLS AND HEIFERS WE ARE OFFERING FEATURE SUPERIOR ANGUS GENETICS GEARED TO SUPPLY THE COMMERCIAL CATTLEMAN WITH THE BEST.

WE KEEP DILIGENT PERFORMANCE RECORDS AND USE ALL THE AVAILABLE TESTS TO ENABLE YOU TO EVALUATE OUR CATTLE. THEIR EPDS, ULTRASOUND RESULTS, WEIGHT GAINS, SEMEN TESTS AND EXTENSIVE VACINATIONS DEMONSTRATE OUR DESIRE TO PROVE THE WORTH OF THESE CATTLE. THEIR NUTRITION HAS BEEN FORMULATED FOR DEVELOPMENT GROWTH.

LOOK THEM OVER, EXAMINE THEIR STRUCTURE AND PHENOTYPE AND YOU WILL FIND THAT THEY COMPARE VERY FAVORABLY TO ANY OTHER HERDS. THEY ARE READY TO GO TO WORK FOR YOU AND GIVE YOU THE CUTTING EDGE YOU NEED TO MAXIMIZE YOUR PROFITS.

PLEASE JOIN US AT THE SALE AT THE CALGARY STOCKYARDS IN STRATHMORE, ALBERTA AT 1 P.M. ON MARCH 31, 2012. LOOK OVER THE CATTLE BEFORE THE SALE AND JOIN US FOR LUNCH AT NOON PUT ON BY OUR FRIENDS AND GUEST CONSIGNERS, RAFTER LAZY S RANCH.

AS A SPECIAL ATTRACTION TO TAKE UP OUR INVITATION AND COME TO THE SALE WE ARE OFFERING AN ALLURING DOORPRIZE - ONE OF OUR BEST HEIFERS.

STEVE AND JOAN GIBSON | THE FIPKE FAMILY | THE LYONS FAMILY



Steve and Joan Gibson



*Wayne, Ava and daughter
Johanna Fipke*



*David and Susan Lyons,
and family (Ranch
Co-owners)*

DOOR PRIZE

Win!



A HEIFER WITH TOP EPDs IN CANADA!

Buck Lake Ranch Production Sale Door Prize! Buck Lake Crystal 335Y ... ready to add to your herd, halter broke. Top 1% EPDs in Canada for weaning and yearling weights, milk, rib eye and marbling.

	BW	WW	YWT	Milk	SC	REA	CW	Marble	Fat
EPD	+1.9	+63	+110	+29	+0.41	+0.62	+19	+0.81	-0.003
Acc	P	P	P	P	P	P	P	P	P
Top %	25	1	1	2	50	1	40	1	20

BUCK LAKE CRYSTAL 335Y

Birth Date: 10/02/2011

S S TRAVELER 6807 T510 1033829 AMF NHF CAF

Sire: S S OBJECTIVE T510 OT26 1179389 AMF NHF CAF

S S MISS RITA R011 7R8 US12958951 AMF NHF

BUCK LAKE CRYSTAL 335Y 1643598

G A R PREDESTINED 1162499 AMF NHF CAF

Dam: DC RWPC ERICA U473 1534484 AMF NHF

BASIN ERICA 927M US14102351

BKLN 335Y- WHO EVER HEARD OF GIVING AWAY YOUR BEST? It is CRYSTAL clear that this is a promotion. Yes, Buck Lake is doing this to attract interest in its breeding program. This heifers numbers are a reflection of her top 1% QUALITY. Cross your fingers and rub your good luck charms, all you need is to be there and be lucky.

DOOR PRIZE RULES

1.) To be eligible for the draw, the person whose name is drawn must be present and a registered bidder on site at the auction. 2.) For those using TEAM, actual buyers names will be added to the draw barrel during the course of the auction. 3.) The winner's name will be drawn at the end of the auction by the auctioneer. 4.) In the event that the winner is not present or is not a TEAM buyer, the auctioneer will draw another name until this requirement is met. 5.) The auctioneer's decision of the winner will be final.

SATURDAY, MARCH 31, 2012 ~ 1 P.M. ~ CALGARY STOCKYARDS, STRATHMORE, AB.

WHY BUY FROM BUCK LAKE RANCH

The single most important reason to buy from us rather than another seedstock producer is that our cattle have major improvements in EPDs (expected progeny differences) that will yield more profits to the commercial cattlemen who use them.

CANADIAN BLACK ANGUS AVERAGE E.P.D.S FOR CALVES BORN IN 2011

	BW	WW	YWT	Milk	Marble	REA	CW
EPD	+2.8	42	74	17	0.23	0.14	17

BUCK LAKE SALE CALVES AVERAGE E.P.D.S FOR THOSE BORN IN 2011

	BW	WW	YWT	Milk	Marble	REA	CW
EPD	+2.6	56	100	24	0.49	0.36	27

BUCK LAKE SALE CALVES AVERAGE E.P.D.S PERCENTILE RANKINGS

	BW	WW	YWT	Milk	Marble	REA	CW
EPD	TOP 44 %	TOP 6%	TOP 5%	TOP 10%	TOP 12%	TOP 12%	TOP 14%

ADVANTAGES OF BUCK LAKE ARE EVIDENT IN THE PERCENTILE RANKINGS

BIRTH WEIGHT: TOP 44% Buck Lake cattle maintain lower than average birth weights

WEANING WEIGHT: TOP 6% Buck Lake cattle have huge advances here which are crucial to a cow/calf producer.

YEARLING WEIGHT: TOP 5% Continuing advances in growth curves are important to buyers of calves or owners retaining them.

MILK: TOP 10% Strong milk production is important to commercial cattlemen planning on retaining or selling replacement heifers.

MARBLING: TOP 12% Intermuscular fat is the most important meat quality indicator for how beef will grade.

REA: TOP 12% Rib eye area is an important indicator of the meat to bone/waste of an animal.

CARCASS WEIGHT: TOP 14% The heavier the carcass the more its worth.

EVERY ANIMAL IN THE SALE HAS ITS INDIVIDUAL EPDS AND RANKINGS FOR YOU TO EVALUATE ITS POTENTIAL AS A MONEY MAKING ADDITION TO YOUR PROGRAM

Buck Lake Ranch has a well-managed herd of Angus cattle. The Ranch uses Pfizer Gold vaccination program and semen test all their bulls offered for sale. The cow herd is healthy with a good breeding program in place. *Dr. Ruth Sims, CVM*

REFERENCE SIRE



	BW	WW	YWT	Milk	TM	SC	CE	MCE	REA	CW	Marble	Fat
EPD	+4.6	+59	+111	+29	+59	+0.74	+4.0	+7.0	+0.34	+50	+0.55	+0.066
Acc	98	96	95	88	-	94	82	83	64	60	65	62
Top %	85	3	1	2	1	15	35	30	15	1	8	99

V D A R NEW TREND 315 689500 AMF NHF CAF

Sire: B/R NEW DESIGN 036 928540 AMF NHF CAF

B/R BLACKCAP EMPRESS 76 US10970296

GAR PREDESTINED 1309743 AMF NHF CAF

N BAR EMULATION EXT 849773 AMF NHF CAF

Dam: G A R EXT 4206 US12716727

G A R 6807 TRAVELER 1432 US11872350

He moderates size, gives thickness, depth of flank, superior feet and legs, and is a high accuracy breed leading production gain and carcass quality king. His daughters are knock-outs. His EPDs are fabulous carcass ratings of top 1% for marbling and REA and 5% for carcass weight with production yearling weight in the top 7%.



	BW	WW	YWT	Milk	TM	SC	CE	MCE	REA	CW	Marble	Fat
EPD	+1.0	+70	+123	+31	+66	+0.20	+12.0	+7.0	+0.71	+5	+0.81	-0.035
Acc	98	97	96	93	-	97	95	89	81	79	81	80
Top %	10	1	1	1	1	75	1	30	1	94	1	1

SITZ TRAVELER 8180 866597 AMF NHF CAF

Sire: S A V 8180 TRAVELER 004 1421804 AMF NHF CAF

BOYD FOREVER LADY 8003 US13050778

S A V NET WORTH 4200 1309743 AMF NHF CAF

S A F 598 BANDO 5175 994198 AMF CAC

Dam: S A V MAY 2410 US14140883

S A V MAY 6269 US12573540

He transmits unprecedented thickness, muscle, volume and weight gain power without adding height. Daughters are deep and broody with superior fleshing ease and udder quality. His EPDs reflect his qualities giving top 1% for yearling and carcass weight, top 3% WW, while his marbling maintains top 8%.



	BW	WW	YWT	Milk	TM	SC	CE	MCE	REA	CW	Marble	Fat
EPD	+4.6	+59	+111	+29	+59	+0.74	+4.0	+7.0	+0.34	+50	+0.55	+0.066
Acc	98	96	95	88	-	94	82	83	64	60	65	62
Top %	75	10	7	2	2	60	35	20	1	5	1	93

D H D TRAVELER 6807 773800 AMF NHF

Sire: S S TRAVELER 6807 T510 1033829 AMF NHF CAF

S S MISS HI SPADE A114 US11665432

S S OBJECTIVE T510 0T26 1179389 AMF NHF CAF

S S RITO RITO R76 R011 US11494687

Dam: S S MISS RITA R011 7R8 US12958951 AMF NHF

S S MISS ULTRESS U56 US12490161

One of the breeds most dominant sires, he brings outstanding calving ease and explosive growth along with outstanding carcass improvements of marbling, rib eye, added capacity and rib shape. His progeny have top weaning and yearling weights making them favorites with commercial cattlemen. Daughters have excellent udders and small teat size.

REFERENCE SIREs



	BW	WW	YWT	Milk	TM	SC	CE	MCE	REA	CW	Marble	Fat
EPD	+2.4	+72	+137	+44	+80	+1.39	+6.0	+9.0	+0.65	+59	+0.39	+0.003
Acc	97	96	94	78	-	94	87	69	62	57	62	59
Top %	40	1	1	1	1	1	20	10	1	1	20	30

CONNEALY LEAD ON 1179972 AMF NHF CAF
Sire: CONNEALY ONWARD 1273540 AMF NHF CAF
 ALTUNE OF CONANGA 6104 US13169198

SITZ UPWARD 307R 1385926 AMF NHF CAF

SITZ VALUE 7097 953344 AMF NHF CAF
Dam: SITZ HENRIETTA PRIDE 81M US14087650
 SITZ HENRIETTA PRIDE 1370 US13576315

Adds huge performance growth, extra muscle, sound bone structure and bigger scrotal to his offspring. His EPDs feature top 1% in the breed for weaning weight, yearling weight, milk and carcass weight. Daughters are broody with strong udder structure and small teat size.

CONNEALY LEAD ON 1179972 AMF NHF CAF
Sire: CONNEALY ONWARD 1273540 AMF NHF CAF
 ALTUNE OF CONANGA 6104 US13169198

SITZ ONWARD 298S 1433537

SITZ TRAVELER 5556 US12571619
Dam: SITZ EMMA E 104M US14087233
 SITZ EMMA E 1968 US12996412



	BW	WW	YWT	Milk	TM	SC	CE	MCE	REA	CW	Marble	Fat
EPD	+1.7	+63	+115	+22	+54	+0.29	+7.0	+7.0	+0.46	+33	+0.38	+0.032
Acc	59	46	29	25	-	P	35	20	28	19	24	23
Top %	25	1	1	15	3	65	15	30	5	5	20	85

Like UPWARD 307R he is sired by CONNEALY ONWARD, but his dam side descends from the \$3 million progeny earning SITZ ELVERELDA ENTENSE 1137. His progeny deliver huge performance growth with EPDs earned for the top 1% for weaning weight and yearling weight while demonstrating good calving ease. He delivers great sons as well as superior daughters.



	BW	WW	YWT	Milk	TM	SC	CE	MCE	REA	CW	Marble	Fat
EPD	+3.1	+65	+115	+25	+58	+0.57	+1.0	+8.0	+0.33	+35	+0.45	+0.028
Acc	41	31	27	19	-	35	24	15	23	16	21	18
Top %	55	1	1	7	1	30	60	20	15	3	15	80

C A FUTURE DIRECTION 5321 867594 CAF NHC AMC
Sire: STEVENSON CE DELUXE 1914 1477246 AMF CAF NHC
 FSHK PRIDE 180 US13868600 NHF

WAYNES DIAMOND BUCK LAKE 10U 1466920 NHF

VERMILION PAYWEIGHT J847 1201685 AMF NHF CAF
Dam: DIAMOND NOLA S251 1441342
 DIAMOND NOLA 2995 US14115455

He was the top performing bull of Buck Lakes 2008 calf crop and has continued to demonstrate superiority in his progeny earning him EPDs in the top 1% for weaning weight and yearling weight, top 3% carcass weight while maintaining top 15% in carcass quality indicators of marbling and REA. His sire has a similar profile with EPDs in the top 1% for WW, YW, Milk and Marbling with excellent calving ease, while his dam, a daughter of VERMILION PAYWEIGHT, transmits top 1% scrotal circumference as well as production power.

REFERENCE SIREs

SANDY BAR ADVANTAGE 43M 1119001

Sire: HF KODIAK 5R 1274305 MAF AMF NHF CAF

WILBAR RUBY 955N 1145690

HF TIGER 5T 1402252 CAF NHF AMF

TC FREEDOM 104 1169224 CAF AMF NHF

Dam: HF ECHO 84R 1274314

HFDF ECHO 6N 1186561

Winner of many show titles including Grand Champion of the World Angus Forum, this son of the internationally recognized sire, HF KODIAK 5R out of a daughter of TC FREEDOM 104 is undoubtedly one of the most outstanding bulls ever bred in Canada. His EPDs of top 1% for weaning and yearling weight are coupled with dramatic calving ease. Buck Lake has a sizable calf crop from him in 2012.



	BW	WW	YWT	Milk	TM	SC	CE	MCE	REA	CW	Marble	Fat
EPD	+0.4	+67	+124	+24	+58	+0.62	+10.0	+9.0	+0.19	+17	+0.03	+0.003
Acc	85	83	71	43	-	69	69	37	17	11	17	13
Top %	8	1	1	10	1	25	3	10	35	50	92	30



	BW	WW	YWT	Milk	TM	SC	CE	MCE	REA	CW	Marble	Fat
EPD	+0.1	+58	+107	+34	+63	+0.48	+11.0	+10.0	+0.01	+33	+0.44	+0.042
Acc	96	94	92	76	-	92	91	69	50	42	51	47
Top %	6	4	1	1	1	45	2	8	75	5	15	94

BUCK LAKE ACE 01T

Moderate sized but chunky and muscular, ACE is a son of BOYD ON TARGET 1083, who also demonstrates a growth curve leading to a top 2% yearling weight EPD. While on test ACE recorded gains of over 5 lbs/day. He has a top 1% EPD for scrotal circumference correlating to increased heifer fertility. He has top 20% low birth weight EPD and has been used as a calving ease bull on heifers and young cows but is now tackling larger cows.

HARB PENDLETON 765 JH 1471747 AMF NHF CAF

SITZ TRAVELER 8180 866597 AMF NHF CAF

Sire: S A V FINAL ANSWER 0035 1061938 AMF NHF CAF

S A V EMULOUS 8145 US13094078 CAF

Dam: H A R B HIGH PLAINS 975 JH 1205665 AMF NHF CAF
H A R B BLACK LADY 375 J H US14611224
H A R B BLACK LADY 073 J H US13787972

Heralded for delivering low birth weight combined with explosive growth and unusual muscle mass for a calving ease sire this bull has been a success with Angus breeders looking to transfer these traits to their commercial customers.

BUCK LAKE ACE 01T 1428007 CAF

S A F 598 BANDO 5175 994198 AMF CAC

Sire: BOYD ON TARGET 1083 1302247 AMF NHF CAC

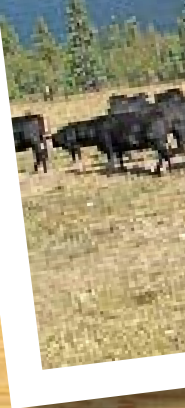
BOYD FOREVER LADY 7095 US12799321

Dam: CONNEALY LEAD ON 1179972 AMF NHF CAF
LONE STAR JUDY BLACKCAP 17S 1308232

LONE STAR JUDY BLACKCAP 25L 1054448

	BW	WW	YWT	Milk	TM	SC	CE	MCE	REA	CW	Marble	Fat
EPD	+1.6	+47	+94	+22	+46	+1.21	+5.0	+7.0	+0.33	+26	+0.29	-0.005
Acc	41	31	27	21	-	35	32	19	24	17	22	20
Top %	20	25	10	15	15	1	25	30	15	15	35	15

2 YEAR OLDS



LOT
152X



BKLN 152X / #1584517 / FEB.15/10

BKLN 152X

B/R NEW DESIGN 036 928540 AMF NHF CAF
Sire: G A R PREDESTINED 1162499 AMF NHF CAF
 B/R BLACKCAP EMPRESS 76 US10970296

BKLN HOMESTEADER 152X 1584517

BASIN YELLOWSTONE 116P US14686102 AMF NHF CAF
Dam: BASIN PAMELA S305 1441220
 BASIN PAMELA 9943 US14477433

This bull served as a herd sire for us last year, mostly on heifers. His EPDs give Top 1% for marbling and his ultrasound verified AAA. His birth weight and EPD are improvements over his sire yet his top 7% carcass weight and milk and top 8% yearling weight and his weaning weight numbers hold up to PREDESTINED. His ET dam by BASIN YELLOWSTONE 116P has top 1% marbling and better calving ease and top production EPDs., providing maternal support for an excellent herd builder.

BW Adj. WW

77^{ET} 600

	BW	WW	YWT	Milk	TM	CE	MCE	REA	CW	Marble	Fat
EPD	+2.4	+52	+96	+25	+51	+5.5	+8.5	+0.25	+31	+1.02	+0.036
Acc	P	P	P	P	-	P	P	P	P	P	P
Top %	40	10	8	7	7	20	15	25	7	1	90

LOT
168X



BKLN 168X / #1584525 / FEB.20/10

BKLN 168X

B/R NEW DESIGN 036 928540 AMF NHF CAF
Sire: G A R PREDESTINED 1162499 AMF NHF CAF
 G A R EXT 4206 US12716727

BUCK LAKE BRAVE 168X 1584527

CONNEALY RIGHT DIRECTION 3499 US14528228 CAF AMF NHF
Dam: SCR QUEENIE 60722 1480380 NHF
 PLATTEMERE QUEENIE 714 US14746364

We used BRAVE on a select group of cows last year. He is a major carcass quality improver with EPDs in the top 1% for marbling and ribeye and top 3% for carcass weight. He holds the top 5% in Milk and top 6% for yearling weight and top 10% for weaning weight. BRAVE is a big time cow maker. In every quadrant of his pedigree the direct influence of breed legends enhance his performance.

BW Adj. WW

87^{ET} 565

	BW	WW	YWT	Milk	TM	CE	MCE	REA	CW	Marble	Fat
EPD	+3.3	+54	+98	+26	+53	+5.5	+8.5	+0.57	+34	+0.89	+0.022
Acc	P	P	P	P	-	P	P	P	P	P	P
Top %	60	10	6	5	4	20	15	1	3	1	70



**LOT
210X**



BKLG 210X / # 1575895 / Birthdate

BW	Adj. WW
83	595

	BW	WW	YWT	Milk	TM	CE	MCE	REA	CW	Marble	Fat
EPD	+1.9	+53	+97	+25	+52	+5.5	+8.5	+0.18	+32	+1.11	+0.039
Acc	37	28	23	21	-	P	P	27	20	24	22
Top %	25	10	7	7	6	20	15	40	6	1	92

BKLG 210X

B/R NEW DESIGN 036 928540 AMF NHF CAF
Sire: G A R PREDESTINED 1162499 AMF NHF CAF
 G A R EXT 4206 US12716727

BUCK LAKE TITAN 210X 1575895

BASIN YELLOWSTONE 116P US14686102 AMF NHF CAF
Dam: BASIN PAMELA S305 1441220
 BASIN PAMELA 9943 US14477433

The heaviest bull in the sale is strongly muscled rather than overweight. TITAN had the highest marbling ultrasound result of his contemporary group and his top 1% EPD reflects this. He has solid scrotal development and his birth weight EPD is moderate. His EPDs for yearling weight and milk are in the top 7% of the breed in Canada. He was used last year in herd on a select group of cows and is eager to go to work for an asute commercial cattleman who wants quality beef as well as top production growth.

**LOT
281X**



BKLG 281X / # 1575903 / Birthdate

BW	Adj. WW
89	550

	BW	WW	YWT	Milk	TM	CE	MCE	REA	CW	Marble	Fat
EPD	+2.4	+56	+104	+19	+47	+7.5	+8.0	+0.52	+35	+0.41	+0.003
Acc	34	23	14	13	-	P	P	P	P	P	P
Top %	40	6	2	40	15	10	20	3	3	15	30

BKLG 281X

CONNELLY ONWARD 1273540 AMF NHF CAF
Sire: SITZ ONWARD 298S 1433537
 SITZ EMMA E 104M US14087233

BUCK LAKE WALKER 281X 1575903

BT CROSSOVER 758N 1410202 CAF AMC NHC
Dam: SCR QUEEN 60568 1480383 AMF NHF
 SCR QUEEN 653 US14617589

A favorite bull out of our great herdsire, 298s, WALKER holds EPDs of the top 2% for yearling weight, top 3% for REA and carcass weight, and top 6% for weaning weight. He saw herd service last year on a select group of Buck Lake cows.

YEARLINGS

LOT
304Y



BKLG 304Y / #1621269 / JAN.16/11

BW	Adj. WW
82	518

This yearling by Hirsche's star bull, a son of SAV NET WORTH, is out of the biggest heifer in the herd who has EPDs of the top 1% weaning weight and carcass weight as well as top 2% ribeye and yearling weight. He'll throw calves with punch in them from your cows.

BUCK LAKE ENTREPRENEUR 304Y

S A V NET WORTH 4200 1309743 AMF NHF CAF

Sire: GH ADAMS WALLSTREET 1U 1466340

GH EQUATOR ROSE 152S 1319665

GH COVERBOY ERIC 110R 1289436

Dam: GH ADAMS 110R FLORA 1W 1518203

BIG SKY FLORA 020 1023753

GH ADAMS 110R
FLORA 1W
Dam of 304Y



	BW	WW	YWT	Milk	TM	CE	MCE	REA	CW	Marble	Fat
EPD	+4.9	+58	+93	+20	+49	-2.0	+5.0	+0.35	+38	+0.10	+0.012
Acc	31	20	10	9	-	22	7	P	P	P	P
Top %	91	4	10	30	10	80	55	10	1	80	50

BUCK LAKE OUTFITTER 306Y

LOT
306Y



BKLG 306Y / # 1621271 / JAN.23/11

BW	Adj. WW
73	546

This bull has outstanding heifer bull written all over him with big caving ease on both sides, with excellent weight gain and carcass EPDs.

S A V FINAL ANSWER 0035 1061938 AMF NHF CAF

Sire: HARB PENDLETON 765 J H 1471747 AMF NHF CAF

H A R B BLACK LADY 375 J H US14611224

QUAKER HILL OBJECTIVE 3J15 1385921 AMF NHF CAF

Dam: AVAS PRIDE BKLG 7W 1507937

TAFIKA NEUTRON PRIDE 65R 1297523

	BW	WW	YWT	Milk	TM	CE	MCE	REA	CW	Marble	Fat
EPD	+1.3	+59	+105	+29	+59	+9.0	+9.0	+0.36	+27	+0.36	+0.030
Acc	36	28	22	20	-	31	18	P	P	P	P
Top %	15	3	2	2	1	6	10	10	10	20	85

BUCK LAKE CAPTAIN 310Y

LOT
310Y



BKLG 310Y / # 1621274 / JAN.26/11

BW	Adj. WW
75	617

Here is a heifer bull with explosive growth built into his calves. His weaning weight and yearling weight EPDs are in the top 1% and his carcass characteristics are excellent.

S S TRAVELER 6807 T510 1033829 AMF NHF CAF

Sire: S S OBJECTIVE T510 OT26 1179389 AMF NHF CAF

S S MISS RITA R011 7R8 US12958951 AMF NHF

SITZ ONWARD 298S 1433537

Dam: VENUS OF BUCK LAKE 38W 1508132

BARBARA OF PEAK DOT 534S 1337700

	BW	WW	YWT	Milk	TM	CE	MCE	REA	CW	Marble	Fat
EPD	+0.9	+73	+122	+27	+64	+10.0	+8.0	+0.45	+18	+0.52	-0.002
Acc	36	27	20	19	-	30	17	P	P	P	P
Top %	10	1	1	3	1	3	20	6	45	10	20

BUCK LAKE GAME DAY 313

LOT
313Y



BW Adj. WW
88 583

BKLN 313Y / # 1621279 / JAN.27/11

A Mountain View Farms breeding from a productive 7 year old famous Tibbie line dam gives us a very solid bull, with top 3% calving ease, top 1% ribeye and top 5% yearling weight from his Sire against his maternal gsire, MF DESTROYER, known for top 1% milk, top 7% ribeye and top 10% weaning weight.

BOYD NEW DAY 8005 994200 AMF NHF CAF

Sire: GDAR GAME DAY 449 1385923 AMF NHF CAF

G D A R MISS WIX 474 US12190986

MF DESTROYER 093 1362129 CAF

Dam: MVF TIBBIE 131W 1525049

MVF TIBBIE 979T 1421222

	BW	WW	YWT	Milk	TM	CE	MCE
EPD	+3.0	+52	+97	+28	+54	0.0	+7.0
Acc	36	27	22	19	-	31	16
Top %	50	10	7	2	3	65	30

BUCK LAKE WRANGLER 321Y

LOT
321Y

BKLN 321Y / # 1621282 / JAN.30/11

Super heifer bull with EPDs of top 1% calving ease, weaning weight, yearling weight and milk.

S S TRAVELER 6807 T510 1033829 AMF NHF CAF

Sire: S S OBJECTIVE T510 OT26 1179389 AMF NHF CAF

S S MISS RITA R011 7R8 US12958951 AMF NHF

SITZ ONWARD 298S 1433537

Dam: VENUS OF BUCK LAKE 38W 1508132

BARBARA OF PEAK DOT 534S 1337700

BW Adj. WW
72 630

	BW	WW	YWT	Milk	TM	CE	MCE	REA	CW	Marble	Fat
EPD	+0.9	+63	+111	+32	+64	+11.5	+8.0	+0.45	+17	+0.56	+0.001
Acc	25	28	22	20	-	P	P	P	P	P	P
Top %	10	1	1	1	1	1	20	6	50	8	25

BUCK LAKE RELIABLE JOE 315Y

LOT
315Y

BKLN 315Y / # 1653975 / JAN.18/11

This heifer bull has superb spread, low BW but huge growth and impressive carcass traits.

S A V FINAL ANSWER 0035 1061938 AMF NHF CAF

Sire: HARB PENDLETON 765 J H 1471747 AMF NHF CAF

H A R B BLACK LADY 375 J H US14611224

QUAKER HILL OBJECTIVE 3J15 1385921 AMF NHF CAF

Dam: AVAS PRIDE BKLN 7W 1507937

TAFIKA NEUTRON PRIDE 65R 1297523

BW Adj. WW
68 593

	BW	WW	YWT	Milk	SC	REA	CW	Marble	Fat
EPD	-0.8	+60	+110	+29	+0.10	+0.30	+17	+0.67	+0.006
Acc	36	27	20	19	-	30	17	P	P
Top %	10	1	1	3	1	3	20	6	45

LOT
322Y

BUCK LAKE PILOT 322Y

BKLN 322Y / # 1621283 / JAN.30/11

PILOT has outstanding power bull written all over him. In addition to excellent production his Milk EPD is in the top 1%.

CONNELLY ONWARD 1273540 AMF NHF CAF

Sire: SITZ UPWARD 307R 1385926 AMF NHF CAF

SITZ HENRIETTA PRIDE 81M US14087650

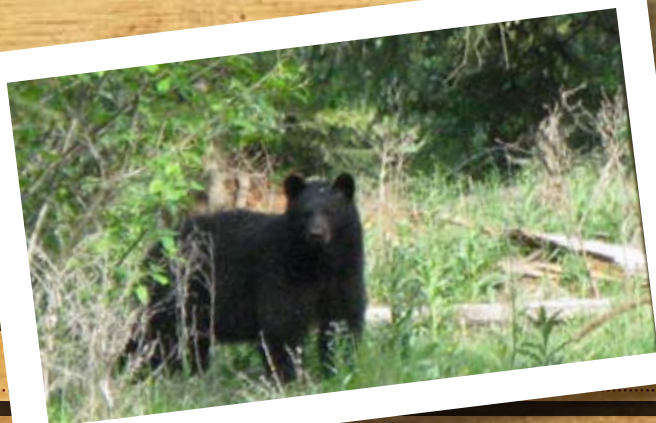
WESTERN WIDESPREAD 1L 1041526

Dam: MVF TIBBIE 258R 1292711

MVF TIBBIE 192H 926176

BW Adj. WW
88 564

	BW	WW	YWT	Milk	TM	SC	CE	MCE
EPD	+3.3	+58	+105	+30	+59	+0.82	+1.0	+8.0
Acc	36	28	21	21	-	P	27	16
Top %	60	4	2	1	1	10	60	20



**LOT
324Y**



BKLK 324Y / # 1621285 / JAN.31/11

BW	Adj. WW
88	539

A thick wide bull by Net Worth out of one of our best thick and soggy dams.

BUCK LAKE BLACKCOMBE 324Y

S A V 8180 TRAVELER 004 1421804 AMF NHF CAF

Sire: S A V NET WORTH 4200 1309743 AMF NHF CAF

S A V MAY 2410 US14140883

K C PRIME TIME 6029 95 896109 AMF NHF CAF

Dam: UBAR HIGH TIME PRIDE 9M 1093590

UBAR JANICE PRIDE 315 1015354

**UBAR HIGH TIME
PRIDE 9M
Dam of 304Y**



	BW	WW	YWT	Milk	TM	CE	MCE	REA	CW	Marble	Fat
EPD	+3.5	+47	+88	+22	+46	+2.0	+5.0	+0.13	+36	+0.41	+0.038
Acc	36	28	21	22	-	28	18	P	P	P	P
Top %	65	25	15	15	15	50	55	50	2	15	92

BUCK LAKE FORT KNOX 325Y

**LOT
325Y**



BKLK 325Y / # 1621286 / FEB.1/11

This bull is solid gold, a thick and solid performance son of Net Worth out of an excellent Retail Product dam.

S A V 8180 TRAVELER 004 1421804 AMF NHF CAF

Sire: S A V NET WORTH 4200 1309743 AMF NHF CAF

S A V MAY 2410 US14140883

G A R RETAIL PRODUCT 1238634 AMF NHF CAF

Dam: N.B.A. BURGESS 28T 1391060

MVF BURGESS 93R 1290360

BW	Adj. WW
86	500

	BW	WW	YWT	Milk	TM	CE	MCE	REA	CW	Marble	Fat
EPD	+3.3	+50	+96	+23	+48	+4.0	+7.0	+0.31	+34	+0.45	+0.029
Acc	36	28	22	21	-	30	18	P	P	P	P
Top %	60	15	8	10	10	35	30	15	3	15	80

BUCK LAKE LION 326Y

**LOT
326Y**



BKLK 326Y / # 1653976 / FEB.3/11

A very solid typical Hamilton Farms bred bull out of the world famous Tiger by a bred heifer we acquired from them.

HF KODIAK 5R 1274305 MAF AMF NHF CAF

Sire: HF TIGER 5T 1402252 CAF NHF AMF

HF ECHO 84R 1274314

DUFF ENCORE 702 1485946 AMF NHF CAF

Dam: HF ERICA 289W 1511394

HF ERICA 61F 858812

BW	Adj. WW
73	548

	BW	WW	YWT	Milk	SC	REA	CW	Marble	Fat
EPD	+1.5	+53	+97	+17	+0.07	+0.22	+15	+0.14	-0.003
Acc	P+	P+	P+	P	P	P	P	P	P
Top %	20	10	7	55	80	30	60	70	20

**LOT
327Y**



BKLK 327Y / # 1621287 / FEB.6/11

BW Adj. **WW**
78 | **509**

A Mountain View Farms bred cow delivered an energetic bull with lots of production power.

**BUCK LAKE
DAZZLER 327Y**

CONNELY ONWARD 1273540 AMF NHF CAF

Sire: SITZ UPWARD 307R 1385926 AMF NHF CAF

SITZ HENRIETTA PRIDE 81M US14087650

WESTERN WIDESPREAD 1L 1041526

Dam: MVF TIBBIE 216P 1222310

MVF TIBBIE 192H 926176

	BW	WW	YWT	Milk	TM	CE	MCE
EPD	+2.3	+52	+100	+27	+53	+5.0	+10.0
Acc	37	28	22	21	-	27	17
Top %	35	10	5	3	4	25	8

BUCK LAKE NETWORK 328Y

BKLK 328Y / # 1643601 / FEB.7/11

**LOT
328Y**

Big production power on both sides of his pedigree. A very good cow bull.

S A V 8180 TRAVELER 004 1421804 AMF NHF CAF

Sire: S A V NET WORTH 4200 1309743 AMF NHF CAF

S A V MAY 2410 US14140883

S A NEUTRON 377 1074546 AMF NHF CAF

Dam: TAFIKA NEUTRON PRIDE 65R 1297523

TAFIKA RR PRIDE 90L 1045480

BW Adj. **WW**
86ET | **526**

	BW	WW	YWT	Milk	SC	REA	CW	Marble	Fat
EPD	+4.8	+56	+103	+23	+0.79	+0.35	+38	+0.31	+0.047
Acc	P	P	P	P	P	P	P	P	P
Top %	90	6	3	10	15	10	1	30	96

BUCK LAKE EXPLORER 334Y

**LOT
334Y**



BKLK 334Y / # 1643604 / FEB.9/11

BW Adj. **WW**
80ET | **546**

This is a feature bull, excellent in all departments, top 1% EPDs in weaning weight, yearling weight and carcass weight and top 10% marbling and ribeye, out of one of our best donor cows.

S A V 8180 TRAVELER 004 1421804 AMF NHF CAF

Sire: S A V NET WORTH 4200 1309743 AMF NHF CAF

S A V MAY 2410 US14140883

F A R SUPERIOR 210M US14276440 AMF

Dam: SCR MISS EXTEND 70528 1480384

SCR MISS EXTEND 50878 US15164312 CAF

	BW	WW	YWT	Milk	SC	REA	CW	Marble	Fat
EPD	+4.9	+65	+121	+26	+0.37	+0.38	+51	+0.47	+0.039
Acc	P	P	P	P	P	P	P	P	P
Top %	91	1	1	5	55	10	1	10	92



**LOT
351Y**



BW	Adj. WW
93	559

BKLG 351Y / # 1621289 / FEB.14/11

A powerhouse combination, thickness and depth, out of a Riverbend Blueprint cow with the best of New design attributes. He has top 5% weaning weight, top 1% yearling weight and carcass weight, with excellent carcass EPDs.

**BUCK LAKE
EXCELLENCY 351Y**

S A V 8180 TRAVELER 004 1421804 AMF NHF CAF

Sire: S A V NET WORTH 4200 1309743 AMF NHF CAF

S A V MAY 2410 US14140883

RIVERBEND BLUEPRINT L24 1196489 AMF NHF CAF

Dam: SCR ENCHANTRESS ERICA 60905 1480388 NHF

SCR ENCHANTRESS ERICA 452 US14342321 NHF AMF

	BW	WW	YWT	Milk	TM	CE	MCE	REA	CW	Marble	Fat
EPD	+4.4	+57	+110	+23	+52	+3.0	+6.5	+0.35	+40	+0.45	+0.037
Acc	37	28	24	21	-	P	P	P	P	P	P
Top %	85	5	1	10	6	40	35	10	1	15	91

**LOT
356Y**

BUCK LAKE RULER 356Y



BW	Adj. WW
71ET	453

BKLG 356Y / # 1643621 / FEB.15/11

This bull will put huge carcass advantages into your herd with EPDs in the top 1% for marbling and ribeye, without sacrificing production with a weaning weight EPD in the top 4%. His dam has power in her pedigree from Gridmaker and Neutron. Could be used on larger heifers.

B/R NEW DESIGN 036 928540 AMF NHF CAF

Sire: G A R PREDESTINED 1162499 AMF NHF CAF

G A R EXT 4206 US12716727

LONE STAR GRID MAKER 29P 1237044

Dam: LONE STAR CINDY 5S 1357868

LONE STAR CINDY 9N 1170454

	BW	WW	YWT	Milk	SC	REA	CW	Marble	Fat
EPD	+4.7	+58	+97	+20	+0.22	+0.57	+26	+0.80	+0.028
Acc	P	P	P	P	P	P	P	P	P
Top %	85	4	7	30	70	1	15	1	80

**LOT
358Y**

BUCK LAKE BIG BEN 358Y



BW	Adj. WW
89	530

BKLG 358Y / # 1621290 / FEB.15/11

This boy gets excellent marbling from his sire and would be a good choice if you want to consider his progeny as replacement heifers.

B/R NEW DESIGN 036 928540 AMF NHF CAF

Sire: G A R PREDESTINED 1162499 AMF NHF CAF

G A R EXT 4206 US12716727

TAFIKA POWER DESIGN 57S 1318067

Dam: JOHANNA OF BUCK LAKE 20U 1429653

BARDOLIA OF PEAK DOT 530S 1337657

	BW	WW	YWT	Milk	TM	CE	MCE	REA	CW	Marble	Fat
EPD	+4.4	+44	+86	+25	+47	+1.0	+6.0	+0.34	+25	+0.70	+0.023
Acc	36	27	21	19	-	29	16	P	P	P	P
Top %	85	40	20	7	15	60	45	15	15	3	75

**LOT
361Y**



BW Adj. **WW**
105ET | **541**

BKLG 361Y / # 1643596 / FEB.16/11

This young bull carries some of the highest EPDs in Canada, with TOP 1% for Weaning weight, yearling weight, ribeye, marbling. His full sister is the Feature door prize heifer. The combination of Objective and Predestined is highly desired by cattlemen who want top growth as well as carcass premiums.

**BUCK LAKE
BIG BEAR 361Y**

S S TRAVELER 6807 T510 1033829 AMF NHF CAF

Sire: S S OBJECTIVE T510 OT26 1179389 AMF NHF CAF

S S MISS RITA R011 7R8 US12958951 AMF NHF

G A R PREDESTINED 1162499 AMF NHF CAF

Dam: DC RWPC ERICA U473 1534484 AMF NHF

BASIN ERICA 927M US14102351

	BW	WW	YWT	Milk	SC	REA	CW	Marble	Fat
EPD	+1.9	+63	+110	+29	+0.41	+0.62	+19	+0.81	-0.003
Acc	P	P	P	P	P	P	P	P	P
Top %	25	1	1	2	50	1	40	1	20

**LOT
362Y**

BUCK LAKE MONARCH 362Y



BW Adj. **WW**
93ET | **519**

BKLG 362Y / # 1643622 / FEB.16/11

Here we have production power with carcass weight EPDs in the top 1%.

S A V 8180 TRAVELER 004 1421804 AMF NHF CAF

Sire: S A V NET WORTH 4200 1309743 AMF NHF CAF

S A V MAY 2410 US14140883

S A NEUTRON 377 1074546 AMF NHF CAF

Dam: TAFIKA NEUTRON PRIDE 65R 1297523

TAFIKA RR PRIDE 90L 1045480

	BW	WW	YWT	Milk	SC	REA	CW	Marble	Fat
EPD	+4.8	+56	+103	+23	+0.79	+0.35	+38	+0.31	+0.047
Acc	P	P	P	P	P	P	P	P	P
Top %	90	6	3	10	15	10	1	30	96

**LOT
364Y**

BUCK LAKE SHAKESPEARE 364Y



BW Adj. **WW**
86ET | **506**

BKLG 364Y / # 1643733 / FEB.17/11

An excellent herd bull prospect with lots to write about. His Peak Dot dam, a Predominant daughter, is one of our best.

S S TRAVELER 6807 T510 1033829 AMF NHF CAF

Sire: S S OBJECTIVE T510 OT26 1179389 AMF NHF CAF

S S MISS RITA R011 7R8 US12958951 AMF NHF

S A V 004 PREDOMINANT 4438 1291656 AMF NHF CAF

Dam: BARDOLIA OF PEAK DOT 530S 1337657

BARDOLIA OF PEAK DOT 442N 1165379

	BW	WW	YWT	Milk	SC	REA	CW	Marble	Fat
EPD	+2.8	+59	+103	+27	+0.10	+0.40	+19	+0.51	-0.005
Acc	P	P	P	P	P	P	P	P	P
Top %	50	3	3	3	80	9	40	10	15

LOT
370Y

BUCK LAKE MAX 370Y



BW Adj. WW
93 555

BKLN 370Y / # 1621295 / FEB.18/11

One of the best bulls in the sale. MAX has depth, width and plenty of muscle. His dam out of Vermillion Payweight also carries production power.

S A V 8180 TRAVELER 004 1421804 AMF NHF CAF

Sire: S A V NET WORTH 4200 1309743 AMF NHF CAF

S A V MAY 2410 US14140883

VERMILION PAYWEIGHT J847 1201685 AMF NHF CAF

Dam: STEVENSON ELINE ERICA 407S 1441222

STEVENSON ELINE ERICA P248 US14701296

	BW	WW	YWT	Milk	TM	CE	MCE	REA	CW	Marble	Fat
EPD	+4.0	+54	+101	+28	+55	+2.5	+8.5	+0.34	+37	+0.40	+0.040
Acc	P	P	P	P	P	P	P	P	P	P	P
Top %	75	10	4	2	2	45	15	15	1	20	93

BUCK LAKE BLACKJACK 372Y

LOT
372Y



BW Adj. WW
84ET 508

BKLN 372Y / # 1643559 / FEB.18/11

Note top 1% EPDs for Weaning and Yearling weight, Marbling, Carcass weight and Ribeye. His powerhouse dam is our top donor cow.

B/R NEW DESIGN 036 928540 AMF NHF CAF

Sire: G A R PREDESTINED 1162499 AMF NHF CAF

G A R EXT 4206 US12716727

F A R SUPERIOR 210M US14276440 AMF

Dam: SCR MISS EXTEND 70528 1480384

SCR MISS EXTEND 50878 US15164312 CAF

	BW	WW	YWT	Milk	SC	REA	CW	Marble	Fat
EPD	+4.6	+62	+114	+26	+0.18	+0.53	+42	+0.81	+0.026
Acc	P	P	P	P	P	P	P	P	P
Top %	85	1	1	5	75	2	1	1	80

LOT
375Y

BUCK LAKE TITAN 375Y



BW Adj. WW
101ET 606

BKLN 375Y / # 1643561 / FEB.19/11

Titan is like his sire, thick and solid, and he is reinforced with the big production power on his dam's side. His EPDs feature top 1% in weaning weight, top 2% in yearling weight and excellent carcass values.

S A V 8180 TRAVELER 004 1421804 AMF NHF CAF

Sire: S A V NET WORTH 4200 1309743 AMF NHF CAF

S A V MAY 2410 US14140883

LONE STAR GRID MAKER 29P 1237044

Dam: LONE STAR CINDY 5S 1357868

LONE STAR CINDY 9N 1170454

	BW	WW	YWT	Milk	SC	REA	CW	Marble	Fat
EPD	+5.0	+62	+104	+20	+0.41	+0.42	+35	+0.45	+0.040
Acc	P	P	P	P	P	P	P	P	P
Top %	92	1	2	30	50	7	3	15	93

LOT
376Y

BUCK LAKE BARD 376Y



BW Adj. WW
93 520

BKLN 376Y / # 1621299 / FEB.19/11

Predestined coupled with a big Nebraska dam out of Connealy Right Direction give us top 1% in carcass attributes of marbling and ribeye in a thick wide package.

B/R NEW DESIGN 036 928540 AMF NHF CAF

Sire: G A R PREDESTINED 1162499 AMF NHF CAF

G A R EXT 4206 US12716727

CONNELLY RIGHT DIRECTION 3499 US14528228 CAF AMF NHF

Dam: SCR QUEENIE 60722 1480380 NHF

PLATTEMERE QUEENIE 714 US14746364

	BW	WW	YWT	Milk	TM	CE	MCE	REA	CW	Marble	Fat
EPD	+3.8	+52	+95	+26	+52	+5.5	+8.5	+0.57	+34	+0.89	+0.022
Acc	P	P	P	P	P	P	P	P	P	P	P
Top %	70	10	9	5	6	20	15	1	3	1	70



LOT 380Y BUCK LAKE ADAM 380Y



BW Adj. **WW**
84 | 530

BKLN 380Y / # 1621297 / FEB.19/11

ADAM has top 1% EPDs for marbling with the rest of his numbers at the high end. His dam out of Mytty In Focus provides a moderating calving ease potential for possible use on larger heifers.

B/R NEW DESIGN 036 928540 AMF NHF CAF

Sire: G A R PREDESTINED 1162499 AMF NHF CAF
G A R EXT 4206 US12716727

MYTTY IN FOCUS 1251205 AMF NHF CAF
Dam: LEILA OF BUCK LAKE 11U 1428003
GH WESTERN BLACKCAP 265N 1188986

	BW	WW	YWT	Milk	TM	CE	MCE	REA	CW	Marble	Fat
EPD	+2.4	+48	+87	+22	+46	+5.0	+8.0	+0.28	+25	+0.89	+0.017
Acc	36	28	22	21	-	29	18	P	P	P	P
Top %	40	25	20	15	15	25	20	20	15	1	65

LOT 381Y BUCK LAKE ROMEO 381Y



BW Adj. **WW**
78ET | 539

BKLN 381Y / # 1643562 / FEB.20/11

Here we have calving ease from Objective on a bull with EPDs for weaning, yearling weight and milk in the top 3%. ROMEO is out of a Peak Dot dam by SAV Predominant over Stevenson Bruno, a real cow maker combination.

S S TRAVELER 6807 T510 1033829 AMF NHF CAF

Sire: S S OBJECTIVE T510 OT26 1179389 AMF NHF CAF
S S MISS RITA R011 7R8 US12958951 AMF NHF

S A V 004 PREDOMINANT 4438 1291656 AMF NHF CAF
Dam: BARDOLIA OF PEAK DOT 530S 1337657
BARDOLIA OF PEAK DOT 442N 1165379

	BW	WW	YWT	Milk	SC	REA	CW	Marble	Fat
EPD	+2.8	+59	+103	+27	+0.10	+0.40	+19	+0.51	-0.005
Acc	P	P	P	P	P	P	P	P	P
Top %	50	3	3	3	80	9	40	10	15

**LOT
383Y**



BKLK 383Y / # 1621302 / FEB.21/11

BW	Adj. WW
84	486

You can't get better than the top 1% and this bull has such a rating for marbling. Most of the rest of his numbers are in the top 10%. His dam is one of our best cows, thick and soggy, sired by a great BASIN YELLOWSTONE bull.

**BUCK LAKE KING DAVID
383Y**

B/R NEW DESIGN 036 928540 AMF NHF CAF

Sire: G A R PREDESTINED 1162499 AMF NHF CAF

G A R EXT 4206 US12716727

BASIN YELLOWSTONE 043R US14981220

Dam: BASIN LASS 44TO 1485198

BASIN LASS P971 US14724481

**BASIN LASS 44TO
Dam of 383Y**



	BW	WW	YWT	Milk	TM	CE	MCE	REA	CW	Marble	Fat
EPD	+3.6	+50	+91	+25	+50	0.0	+5.0	+0.39	+27	+0.80	+0.041
Acc	36	27	22	20	-	P	P	P	P	P	P
Top %	65	15	10	7	8	65	55	10	10	1	93

**LOT
386Y**

BUCK LAKE BEAU 386Y



BW	Adj. WW
88	569

BKLK 386Y / # 1643564 / FEB.22/11

His sire, Prince Elias, brings the calving ease and huge production of HARB PENDLETON crossed with the power of a Peak Dot SAV PREDOMINANT daughter. Beau has a great dam, a WOODHILL FORESIGHT daughter.

HARB PENDLETON 765 J H 1471747 AMF NHF CAF

Sire: PRINCE ELIAS BKLK 20W 1508131

BARDOLIA OF PEAK DOT 530S 1337657

WOODHILL FORESIGHT 1191517 AMF NHF CAF

Dam: UBAR HEIDI PRIDE PN 1392207

UBAR BETSY PRIDE P.N. 867856 (EE+)

	BW	WW	YWT	Milk	TM	CE	MCE	REA	CW	Marble	Fat
EPD	+2.9	+48	+86	+25	+49	+3.0	+5.0	+0.17	+30	+0.34	+0.016
Acc	31	21	11	11	-	21	9	P	P	P	P
Top %	50	25	20	7	10	40	55	40	8	25	60

**LOT
392Y**

BUCK LAKE WHISTLER 392Y



BW	Adj. WW
92	573

BKLK 392Y / # 1621304 / FEB.26/11

An OBJECTIVE son with solid power and cow maker potential, WHISTLER has EPD ratings of top 3% REA, top 4% WW, top 5% YW and top 7% marbling. His dam is our best Willow Springs bred female by Justamere New Deal, himself sired by the cow maker king, Bon View New Design 1407.

S S TRAVELER 6807 T510 1033829 AMF NHF CAF

Sire: S S OBJECTIVE T510 OT26 1179389 AMF NHF CAF

S S MISS RITA R011 7R8 US12958951 AMF NHF

JUSTAMERE NEW DEAL 726L 1076549

Dam: WILLOW EXT U07 1484328

WILLOW EXT S07 1361144

	BW	WW	YWT	Milk	TM	CE	MCE	REA	CW	Marble	Fat
EPD	+3.0	+58	+99	+25	+54	+3.0	+4.0	+0.49	+7	+0.57	-0.019
Acc	35	26	20	20	-	28	16	P	P	P	P
Top %	50	4	5	7	3	40	65	3	90	7	4

**LOT
397Y**



BKLK 397Y/ #PENDING / Sire: DNA still to come

**BUCK LAKE THUNDER-
BIRD 397Y**

A solid bull.



BUCK LAKE PITCHER 421Y

**LOT
421Y**



BW	Adj. WW
75	575

BKLK 421Y / # 1644963 / MAR.10/11

PITCHER is a heifer bull whose sire was noted in ultrasound results as the best marbling bull of his group.

TAFIKA POWER DESIGN 57S 1318067

Sire: BUCK POWER ACE 17U 1429650

PANSY OF PEAK DOT 554S 1337710

MFA TIMELINE 22P 1217449

Dam: WILLOW EXT U25 1484344

WILLOW EXT P08 1198373

	BW	WW	YWT	Milk	TM	CE	MCE	REA	CW	Marble	Fat
EPD	+1.2	+44	+79	+17	+39	+6.0	+10.0	-0.01	+13	+0.34	+0.005
Acc	31	18	10	7	-	18	5	P	P	P	P
Top %	15	40	35	55	45	20	8	80	70	25	35

BUCK LAKE RANGEMASTER 426Y

**LOT
426Y**



BW	Adj. WW
83	587

BKLK 426Y / # 1643591 / MAR.13/11

RANGEMASTER will be an excellent cow maker as well as a dynamic steer sire. His sire throws progeny much like SITZ UPWARD 307, extra thick and outstanding weight gains but he has a bit better female lines. Here 298S produced a son out of a fertile hard working BENCHMARK AMBUSH daughter.

CONNELLY ONWARD 1273540 AMF NHF CAF

Sire: SITZ ONWARD 298S 1433537

SITZ EMMA E 104M US14087233

BENCHMARK AMBUSH 5118 1254121

Dam: BUCK LAKE ANNIE 6T 1402834

BLACK WOLF TRUE LADY 428P 1204499

	BW	WW	YWT	Milk	TM	CE	MCE	REA	CW	Marble	Fat
EPD	+2.7	+52	+95	+28	+54	+3.0	+5.0	+0.22	+27	+0.33	+0.018
Acc	32	21	9	10	-	19	6	P	P	P	P
Top %	45	10	9	2	3	40	55	30	10	25	65

BUCK LAKE FORMIDABLE 427Y

LOT
427Y



BW Adj. WW
80 | 483

BKLK 427Y / # 1643579 / MAR.13/11

This bull has EPDs mostly in the top 25%. He is a second calf of a hard working range dam. Down the road he will be truly FORMIDABLE.

CONNEALY ONWARD 1273540 AMF NHF CAF

Sire: SITZ ONWARD 298S 1433537

SITZ EMMA E 104M US14087233

MFA TIMELINE 22P 1217449

Dam: WILLOW AT-LASS U34 1484351

WILLOW G05 899343

	BW	WW	YWT	Milk	TM	CE	MCE	REA	CW	Marble	Fat
EPD	+2.2	+49	+86	+16	+41	+5.0	+6.0	+0.25	+22	+0.22	+0.012
Acc	33	22	12	11	-	19	7	P	P	P	P
Top %	35	20	20	60	35	25	45	25	25	50	50

BUCK LAKE CHAMPION 429Y

LOT
429Y



BW Adj. WW
87 | 536

BKLK 429Y / # 1643578 / MAR.14/11

Here we see the influence of 298S. CHAMPION is the best calf of 4 his Hirsche bred dam has delivered to us. Solid production power.

CONNEALY ONWARD 1273540 AMF NHF CAF

Sire: SITZ ONWARD 298S 1433537

SITZ EMMA E 104M US14087233

WILLDON LUSTY KRUGERRAND 26L 1067624

Dam: SGH KRUGGIE BLACKCAP 132S 1319743

GH WESTERN BLACKCAP 265N 1188986

	BW	WW	YWT	Milk	TM	CE	MCE	REA	CW	Marble	Fat
EPD	+2.7	+48	+90	+12	+36	+3.0	+5.0	+0.26	+26	+0.29	+0.011
Acc	33	21	9	11	-	19	7	P	P	P	P
Top %	45	25	15	85	60	40	55	25	15	35	50

BUCK LAKE SOLOMON 437Y

LOT
437Y



BW Adj. WW
86 | 590

BKLK 437Y / # 1643577 / MAR.15/11

SOLOMON is a wise choice of the 298S sons. Though born mid-March he caught up to bulls born 2 months earlier. His EPDS include top 4% weaning weight, top 5% yearling weight and top 10% ribeye. His dam out of the powerhouse WOODHILL FORESIGHT has been used in our donor program.

CONNEALY ONWARD 1273540 AMF NHF CAF

Sire: SITZ ONWARD 298S 1433537

SITZ EMMA E 104M US14087233

WOODHILL FORESIGHT 1191517 AMF NHF CAF

Dam: LONE STAR GAINES LADY 26S 1308250

ANKONY GAINES LADY T171 832450

	BW	WW	YWT	Milk	TM	CE	MCE	REA	CW	Marble	Fat
EPD	+1.9	+58	+99	+22	+51	+4.0	+6.0	+0.38	+28	+0.45	+0.016
Acc	34	24	14	13	-	21	10	P	P	P	P
Top %	25	4	5	15	7	35	45	10	10	15	60

BUCK LAKE RIDER 467Y

LOT
467Y



BW Adj. WW
83 | 530

BKLK 467Y / # 1643568 / APR.7/11

RIDER demonstrates the production power of his sire, born in April yet gaining rapidly catching up to those born 6 weeks earlier. This is a good bull.

STEVENSON CE DELUXE 1914 1477246 AMF CAF NHC

Sire: WAYNES DIAMOND BUCK LAKE 10U 1466920 NHF

DIAMOND NOLA S251 1441342

MJT WESTERN CLAY 66L 1052295

Dam: GH WESTERN BLACKCAP 265N 1188986

GH BLACKCAP MISS 1L 1188985

	BW	WW	YWT	Milk	TM	CE	MCE	REA	CW	Marble	Fat
EPD	+3.3	+46	+80	+15	+38	-1.0	+6.0	+0.13	+23	+0.32	+0.006
Acc	32	20	9	11	-	18	7	P	P	P	P
Top %	60	30	35	70	50	75	45	50	25	30	40

**LOT
443Y**



BUCK LAKE JEDI 443Y

BOYD ON TARGET 1083 1302247 AMF NHF CAC

Sire: BUCK LAKE ACE 01T 1428007 CAF

LONE STAR JUDY BLACKCAP 17S 1308232

CONNEALY RIGHT DIRECTION 3499 US14528228 CAF AMF NHF

Dam: SCR JESSICA 60899 1480387 NHF

SCR JESSICA 412 US14373987

BKLK 351Y / # 1621289 / MAR.19/11

BW	Adj. WW
87	508

JEDI is out of super heifer bull on a high production power queen. His EPDs are the top 10% for yearling weight, carcass weight and ribeye and the top 15% for calving ease and weaning weight. He could be used on larger heifers and should throw excellent replacement heifers.

	BW	WW	YWT	Milk	TM	CE	MCE	REA	CW	Marble	Fat
EPD	+1.4	+50	+94	+22	+47	+6.5	+8.0	+0.39	+28	+0.23	-0.004
Acc	32	21	13	12	-	P	P	P	P	P	P
Top %	20	15	10	15	15	15	20	10	10	50	20

BUCK LAKE MAGNIFICENT 481Y

**LOT
481Y**



BW	Adj. WW
79	618

BKLK 481Y / # 1653978 / APR.20/11

MAGNIFICENT is one of the best performers in the sale, in spite of his April 20 birth. His EPDs include top 3% for yearling weight and carcass, top 4% for weaning weight. His Peak Dot dam out of SAV PREDOMINANT has ET bulls in this sale - 364Y and 381Y and her BKLK 20W son was a heifer bull herd sire for us.

STEVENS ON CE DELUXE 1914 1477246 AMF CAF NHC

Sire: WAYNES DIAMOND BUCK LAKE 10U 1466920 NHF
DIAMOND NOLA S251 1441342

S A V 004 PREDOMINANT 4438 1291656 AMF NHF CAF

Dam: BARDOLIA OF PEAK DOT 530S 1337657

BARDOLIA OF PEAK DOT 442N 1165379

	BW	WW	YWT	Milk	SC	REA	CW	Marble	Fat
EPD	+2.5	+58	+103	+24	+0.29	+0.21	+34	+0.33	+0.027
Acc	P+	P+	P+	P	P	P	P	P	P
Top %	40	4	3	10	65	30	3	25	80

BUCK LAKE PROSPECTOR 484Y

**LOT
484Y**



BW	Adj. WW
79	553

BKLK 484Y / # 1653979 / APR.26/11

PROSPECTOR is the youngest bull in the sale. Like his sire he will make a heifer bull to grow into a mature herd bull. The influence from his dam of the breed legends B/R NEW DESIGN 036 and QAS TRAVELER 23-4 could mean real treasure down the road.

HARB PENDLETON 765 J H 1471747 AMF NHF CAF

Sire: PRINCE ELIAS BKLK 20W 1508131

BARDOLIA OF PEAK DOT 530S 1337657

B/R NEW DESIGN 036 928540 AMF NHF CAF

Dam: UBAR NUGGET 1392200

UBAR CHRISTINA NUGGET 23-4 1031828

	BW	WW	YWT	Milk	REA	CW	Marble	Fat
EPD	+1.0	+39	+77	+22	+0.01	+18	+0.19	+0.019
Acc	P+	P+	P+	P	P	P	P	P
Top %	10	60	40	15	75	45	60	65

HEIFERS

LOT
335Y



DOOR PRIZE BUCK LAKE CRYSTAL 335Y

Birth Date: 10/02/2011

S S TRAVELER 6807 T510 1033829 AMF NHF CAF

Sire: S S OBJECTIVE T510 OT26 1179389 AMF NHF CAF

S S MISS RITA R011 7R8 US12958951 AMF NHF

BUCK LAKE CRYSTAL 335Y 1643598

G A R PREDESTINED 1162499 AMF NHF CAF

Dam: DC RWPC ERICA U473 1534484 AMF NHF

BASIN ERICA 927M US14102351

BW	Adj. WW
84ET	597

A HEIFER WITH TOP EPDs IN CANADA!

Who ever heard of giving away your BEST? It is CRYSTAL clear that this is a promotion. Yes, Buck Lake is doing this to attract interest in its breeding program. This heifers numbers are a reflection of her top 1% QUALITY. Cross your fingers and rub your good luck charms, all you need is to be there and be lucky.

	BW	WW	YWT	Milk	SC	REA	CW	Marble	Fat
EPD	+1.9	+63	+110	+29	+0.41	+0.62	+19	+0.81	-0.003
Acc	P	P	P	P	P	P	P	P	P
Top %	25	1	1	2	50	1	40	1	20

LOT
307Y

BUCK LAKE FAVORITE 307Y

S S TRAVELER 6807 T510 1033829 AMF NHF CAF

Sire: S S OBJECTIVE T510 OT26 1179389 AMF NHF CAF

S S MISS RITA R011 7R8 US12958951 AMF NHF

ROYAL NEW DESIGN DRCC 7016T 1367846

Dam: VVF FAVORITE 9W 1490807

MVF FAVORITE 67S 1346863

1621270 / BUCK LAKE FAVORITE 307Y / JAN.23/11



FAVORITE is a strong and good looking heifer out of the S.S. SUPERSIRE OBJECTIVE on a maternal line of Mountain View Farms with 67S out of CONNEALY FREIGHTLINER. This heifer has more than just stellar numbers going for her.

BW	Adj. WW
75	564

	BW	WW	YWT	Milk	TM	CE	MCE
EPD	+1.9	+57	+100	+29	+58	+6.0	+9.0
Acc	35	26	20	19	-	29	17
Top %	25	5	5	2	1	20	10

LOT
309Y

BUCK LAKE SUSAN 309Y

S S TRAVELER 6807 T510 1033829 AMF NHF CAF

Sire: S S OBJECTIVE T510 OT26 1179389 AMF NHF CAF

S S MISS RITA R011 7R8 US12958951 AMF NHF

BON VIEW NEW DESIGN 208 1088254 AMF NHF CAC

Dam: VVF MISS BURGESS 8W 1490806 CAF

N.B.A. BURGESS 28T 1391060

1621275 / BUCK LAKE SUSAN 309Y / JAN.26/11

What a perfect package, look at her EPDs with top 1% in WW, YW and Milk. Her dam's sire NEW DESIGN 208 has one of the breed's highest proven REA numbers.

BW	Adj. WW
72	537



	BW	WW	YWT	Milk	TM	CE	MCE
EPD	+0.8	+65	+112	+31	+64	+9.0	+7.0
Acc	36	28	22	21	-	31	19
Top %	10	1	1	1	1	6	30

LOT
331Y

BUCK LAKE BRITTANY 331Y

S S TRAVELER 6807 T510 1033829 AMF NHF CAF

Sire: S S OBJECTIVE T510 OT26 1179389 AMF NHF CAF

S S MISS RITA R011 7R8 US12958951 AMF NHF

G A R PREDESTINED 1162499 AMF NHF CAF

Dam: DC RWPC ERICA U473 1534484 AMF NHF

BASIN ERICA 927M US14102351

1643599 BUCK LAKE BRITTANY 331Y

Is there another heifer in Canada being offered for sale with such extraordinary EPDs of top 1% across the board? We know of one other - her full sister being GIVEN AWAY as a Door Prize right here. So if you want to make your own luck, BID on BRITTANY.

BW	Adj. WW
75Et	567



	BW	WW	YWT	Milk	SC	REA	CW	Marble	Fat
EPD	+1.9	+63	+110	+29	+0.41	+0.62	+19	+0.81	-0.003
Acc	P	P	P	P	P	P	P	P	P
Top %	25	1	1	2	50	1	40	1	20

HEIFERS

LOT
368Y

BUCK LAKE MAID MARION 368Y

B/R NEW DESIGN 036 928540 AMF NHF CAF

Sire: G A R PREDESTINED 1162499 AMF NHF CAF

G A R EXT 4206 US12716727

S S OBJECTIVE T510 OT26 1179389 AMF NHF CAF

Dam: LONE STAR MISS MARION 33U 1455637

LONE STAR MISS MARION 30P 1240113

1644964 / BUCK LAKE MAID MARION 368Y / Feb.17/11

The breeding of MAID MARION is the mirror of 331Y and 335Y with the sire and the dam's sire switching places. We have out of this world top 1% marbling and REA, top 2% YW and top 3% WW, slightly more birth weight and the cow making influence of PREDESTINED as the sire, so look her over.



BW	Adj. WW
88ET	551

	BW	WW	YWT	Milk	SC	REA	CW	Marble	Fat
EPD	+2.7	+59	+105	+23	+0.18	+0.77	+22	+0.83	+0.003
Acc	P	P	P	P	P	P	P	P	P
Top %	45	3	2	10	75	1	25	1	30

LOT
398Y

BUCK LAKE LADY 398Y

STEVENSON CE DELUXE 1914 1477246 AMF CAF NHC

Sire: WAYNES DIAMOND BUCK LAKE 10U 1466920 NHF

DIAMOND NOLA S251 1441342

S A F FOCUS OF E R 940839 AMF NHF CAF

Dam: UBAR LADY PRIDE 5M 1093587

UBAR BETSY PRIDE P.N. 867856 (EE+)

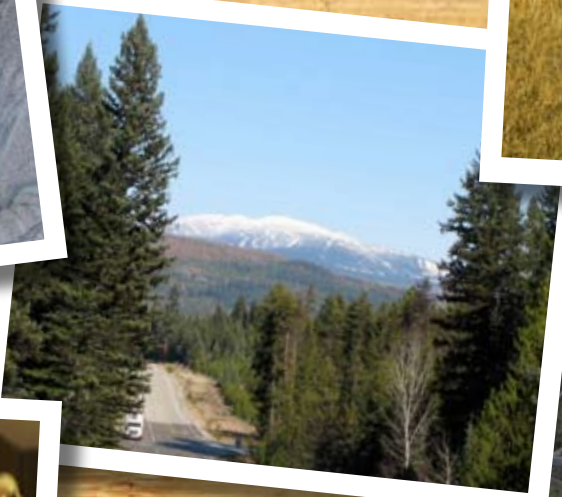
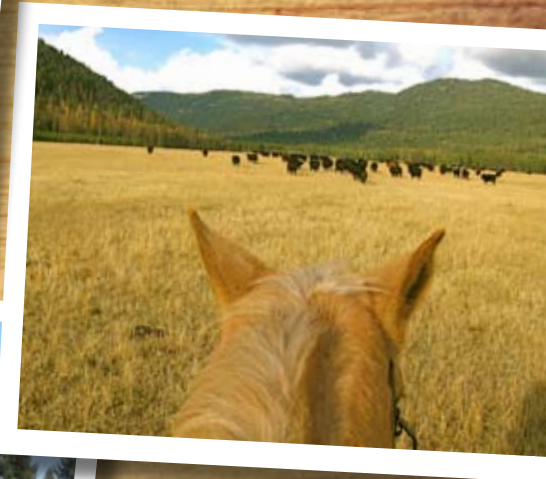
1643566 / BUCK LAKE LADY 398Y / FEB.28/11

A sweet heifer out of an exceptionally deep and broody cow.

BW	Adj. WW
83	496



	BW	WW	YWT	Milk	TM	CE	MCE	REA	CW	Marble	Fat
EPD	+2.3	+53	+93	+23	+50	+2.0	+7.0	+0.18	+24	+0.38	+0.006
Acc	32	21	12	12	-	20	9	P	P	P	P
Top %	35	10	10	10	8	50	30	40	20	20	40



GUEST CONSIGNER:

RAFTER LAZY S RANCH

We are pleased to have this opportunity to present Rafter Lazy S Livestock Company's first production sale with Buck Lake Ranch. We have been commercial cow/ calf producers for many years in the Cardston area and are now expanding into Angus Purebreds. Our herd sires go back to exceptional genetics produced from Buck Lake. Our 16U bull is very thick and deep and is throwing excellent calves, as you can see in our offering. Most of the dams of the bulls offered came from SeWall Working Man Ranch. All the bulls were out of first calvers but they are strong contenders being muscular and uniform in structure and performance and most could serve as heifer bulls.

We have an excellent calf crop again this year from cattle we purchased last year at Buck Lake's sale, including bulls sired by SS OBJECTIVE and SAV NET WORTH and heifers by PREDESTINED and OBJECTIVE. Our objective is to provide quality purebred seedstock that offer top weaning and yearling weight gains to commercial cow/calf operators.

The Schmitke Family, Robert, Heather, Michaela and Karlee.

REFERENCE SIRE

BANDOLIER OF BUCK LAKE 16U

K C F BENNET COALITION SCC 1202394 AMF NHF CAF

Sire: LONE STAR COALITION 28S 1308239
LONE STAR 9FB3 ATLANTA 6J 983776

BUCK LAKE BANDOLIER

S A V BANDOLIER 1916 1211349 AMF
Dam: LONE STAR CINDY 8S 1308243
BIEVER'S CINDY 99G 879887

Bandolier of Buck Lake 16U was the main herd sire for this year's exceptional calf crop. He did a tremendous job with our heifers and created many desired qualities in his offspring.



	BW	WW	YWT	Milk	TM	SC	CE	MCE	REA	CW	Marble	Fat
EPD	+4.8	+48	+85	+23	+47	-0.24	0.0	+5.0	+0.17	+22	+0.43	+0.043
Acc	48	34	21	12	-	31	37	10	16	10	15	12



**LOT
2Y**



RLS Coalition Zeb 2Y / 1646017 / 12/02/2011

This bull has real thick, smooth shoulder and is a favorite of ours. He has strong BUCK LAKE genetics dominating a strong maternal line.

LONE STAR COALITION 28S 1308239

Sire: BANDOLIER OF BUCK LAKE 16U 1441558

LONE STAR CINDY 8S 1308243

BAD LANDS ZEB 21R 1261682

Dam: SANDY CREEK JANETTE 87W 1495432

SANDY CREEK JANETTE 77S 1334154

BW	Adj. WW
90	824

	BW	WW	YWT	Milk	TM	CE	MCE
EPD	+3.6	+42	+71	+21	+42	+1.0	+6.0
Acc	31	19	10	6	-	22	5
Top %	65	50	55	25	30	60	45

**LOT
4Y**



RLS Bentley 4Y / 1646019 / 16/02/2011

This big bull will cruise the pasture just like a big Bentley loaded with powerful genetics.

LONE STAR COALITION 28S 1308239

Sire: BANDOLIER OF BUCK LAKE 16U 1441558

LONE STAR CINDY 8S 1308243

BAD LANDS ZEB 21R 1261682

Dam: SANDY CREEK JANETTE 88W 1495431

SANDY CREEK JANETTE 73S 1334149

BW	Adj. WW
92	780

	BW	WW	YWT	Milk	TM	CE	MCE
EPD	+4.2	+40	+69	+20	+40	0.0	+4.0
Acc	31	19	10	7	-	22	5
Top %	80	55	60	30	40	65	65

**LOT
5Y**



RLS Bushwacker Coalition 5Y / 1646020 / 19/02/2011

Little lower birth weight with some above average EPDs

LONE STAR COALITION 28S 1308239

Sire: BANDOLIER OF BUCK LAKE 16U 1441558

LONE STAR CINDY 8S 1308243

BAD LANDS AMBUSH 37N 1172259

Dam: SANDY CREEK PRIDE 79W 1495409

SANDY CREEK PRIDE 58'02 1101391

BW	Adj. WW
81	759

	BW	WW	YWT	Milk	TM	CE	MCE
EPD	+2.5	+41	+74	+18	+39	+4.0	+8.0
Acc	32	20	11	8	-	23	6
Top %	40	50	50	45	45	35	20

**LOT
6Y**



RLS Coalition 6Y / 1646021 / 19/02/2011

A leader in maternal calving ease, this bull will be an excellent addition to your herd.

LONE STAR COALITION 28S 1308239

Sire: BANDOLIER OF BUCK LAKE 16U 1441558

LONE STAR CINDY 8S 1308243

BAD LANDS AMBUSH 37N 1172259

Dam: SANDY CREEK BLACKDROP 73W 1495394

SANDY CREEK BLACKDROP 30'00 1009388

BW	Adj. WW
79	723

	BW	WW	YWT	Milk	TM	CE	MCE
EPD	+2.3	+36	+68	+18	+36	+6.0	+10.0
Acc	32	20	11	8	-	23	6
Top %	35	70	65	45	60	20	8

LOT
7Y



RLS Full Back Ambush 7Y / 1646022 / 20/02/2011

This great grandson of SAV BANDOLIER 1916 was the top performer of his group. He is very correct, has great hip, excellent top line, with a long neck and smooth shoulders; EPDs indicate no calving problems.

LONE STAR COALITION 28S 1308239

Sire: BANDOLIER OF BUCK LAKE 16U 1441558

LONE STAR CINDY 8S 1308243

H A IMAGE MAKER 0415 1195032 AMF NHF CAF

Dam: SANDY CREEK PATTI QUEEN 59W 1495441

SANDY CREEK PATTI QUEEN 1T 1378078

BW	Adj. WW
94	853

	BW	WW	YWT	Milk	TM	CE	MCE
EPD	+4.5	+53	+92	+26	+53	0.0	+4.0
Acc	32	21	12	9	-	25	7
Top %	85	10	10	5	4	65	65

LOT
8Y



RLS Bandolier Ambush 8Y / 1646023 / 20/02/2011

With the lowest birth weight of his group, and AMBUShing one of the top rates of gain, he will make a great selection for a herd sire.

LONE STAR COALITION 28S 1308239

Sire: BANDOLIER OF BUCK LAKE 16U 1441558

LONE STAR CINDY 8S 1308243

BAD LANDS AMBUSH 37N 1172259

Dam: SANDY CREEK ROYAL LADY 80W 1495410

SANDY CREEK ROYAL LADY 70'03 1166743

BW	Adj. WW
78	856

	BW	WW	YWT	Milk	TM	CE	MCE
EPD	+1.7	+40	+72	+18	+38	+6.0	+9.0
Acc	32	20	11	8	-	23	6
Top %	25	55	55	45	50	20	10

LOT
9Y

RLS Full Back Coalition 9Y

RLS Full Back Coalition 9Y / 1646024 / 21/02/2011

The higher weaning weight is a reflection of the maternal sire, which should pass on to the daughters of this great bull.

LONE STAR COALITION 28S 1308239

Sire: BANDOLIER OF BUCK LAKE 16U 1441558

LONE STAR CINDY 8S 1308243

BAD LANDS AMBUSH 37N 1172259

Dam: SANDY CREEK ROYAL LADY 78W 1495415

SANDY CREEK ROYAL LADY 80'03 1166747

BW	Adj. WW
83	817

	BW	WW	YWT	Milk	TM	CE	MCE
EPD	+2.7	+43	+80	+20	+42	+4.0	+8.0
Acc	32	20	11	8	-	23	6
Top %	45	45	35	30	30	35	20

LOT
11Y



RLS Right Time Coalition 11Y / 1646026 / 22/02/2011

This bull will grow into a top performer like his sire, BUCKLAKE BANDOLIER.

LONE STAR COALITION 28S 1308239

Sire: BANDOLIER OF BUCK LAKE 16U 1441558

LONE STAR CINDY 8S 1308243

BAD LANDS AMBUSH 37N 1172259

Dam: SANDY CREEK COUNTESS 86W 1495436

SANDY CREEK COUNTESS 84S 1334160

BW	Adj. WW
85	775

	BW	WW	YWT	Milk	TM	CE	MCE
EPD	+3.6	+43	+76	+19	+41	+1.0	+6.0
Acc	32	20	11	7	-	22	6
Top %	65	45	45	40	35	60	45





**LOT
12Y**

RLS Bandolier 12Y

RLS BANDOLIER 12Y / 1646027 / 23/02/2011

Last chance offering of a BUCKLAKE BANDOLIER Bull. This bull is, in our eyes one of the top performers in his group. He shows every quality that the BANDOLIER line has to offer.

LONE STAR COALITION 28S 1308239

Sire: BANDOLIER OF BUCK LAKE 16U 1441558

LONE STAR CINDY 8S 1308243

BAD LANDS AMBUSH 37N 1172259

Dam: SANDY CREEK ANNIE 72W 1495435

SANDY CREEK ANNIE 83S 1334158

BW	Adj. WW
83	815

	BW	WW	YWT	Milk	TM	CE	MCE
EPD	+3.6	+43	+76	+19	+41	+1.0	+6.0
Acc	32	20	11	7	-	22	6
Top %	65	45	45	40	35	60	45

**LOT
16Y**



RLS True Grit 16Y / 1654350 / 22/03/2011

Let's cowboy up. This bull's EPDs indicate easy calving and lots of milk which equals lots of beef and sleep during calving season.

MYTTY IN FOCUS 1251205 AMF NHF CAF

Sire: BEAU OF BUCK LAKE 15U 1428006

ANNIE K OF PEAK DOT 555S 1337717

S A V TRUE GRIT 6303 1373548 NHC

Dam: REMINGTON ANNIE 516U 1528344 NHF

REMINGTON ANNIE 169S 1357091

BW	Adj. WW
85	848

	BW	WW	YWT	Milk	SC	REA	CW	Marble	Fat
EPD	+3.4	+49	+86	+23	0.40	+0.10	+18	+0.64	+0.008
Acc	P+	P+	P+	P	P	P	P	P	P
Top %	60	20	20	10	50	55	45	5	45

**LOT
17Y**



RLS Mytty Traveler 17Y / 1654347 / 27/03/2011

Here is a genetic power pack of TRAVELER lines used at SITZ, PEAK DOT, SAV, you name it, this bull's got what every breeder wants in calving ease and performance.

MYTTY IN FOCUS 1251205 AMF NHF CAF

Sire: BEAU OF BUCK LAKE 15U 1428006

ANNIE K OF PEAK DOT 555S 1337717

S A V FINAL ANSWER 0035 1061938 AMF NHF CAF

Dam: SANDY CREEK ELBA 60W 1495403

SANDY CREEK ELBA 31'01 1057466

BW	Adj. WW
80	777

	BW	WW	YWT	Milk	SC	REA	CW	Marble	Fat
EPD	+1.2	+43	+76	+18	+0.40	-0.02	+12	+0.28	+0.011
Acc	P+	P+	P+	P	P	P	P	P	P
Top %	15	45	45	45	50	80	75	35	50



