



# Brandl Cattle Co.

**Black & Red Angus Bull Sale**  
**Saturday, March 3rd, 2012**  
**Live Video Auction - 3:00 PM**  
**At the Farm - Jarvie, AB**



# Welcome

Welcome to our 10th Annual Bull Sale! They say time flies when you're having fun. When I look back on the last 10 years, it has certainly been interesting, challenging and educational. There were definitely times that were anything but fun as across the country we've all seen foreclosures, farm sales and dispersals. It gives us a new perspective and appreciation of where we are now in the industry and where we are going yet!

It was 36 years ago that I purchased my first Angus cow and started selling bulls. Bulls were sold at consignment sales at Kamloops, Williams Lake and after moving to Jarvie in 1993 at Calgary, Lloydminster, Lacombe and by private treaty.

Ten years ago when we decided to hold our own sale we realized it needed to be "not just another" bull sale. It's interesting to look back at things and how they have evolved. We pioneered a couple of concepts, one of them being a silent auction bull sale and our second sale held in 2004 was the first purebred sale in Canada to be on the internet. Our third sale, in 2005, was held at the Dapp Hall and also included a customer appreciation evening. Then in 2006 the first Red Angus bulls were offered at our sale. The 2008 version of our sale was our first to offer video viewing of the bulls as they sold. 2010 saw the young enthusiastic auctioneer Ryan Dorran become part of our sales staff and marked the final chapter of our silent auction series. Our ninth sale in 2011 was our first sale held in our own facility right on the farm and was a 100% live auction with the bulls presented on a big screen TV.

Many things evolved over the past 10 years but a couple things have remained constant as well. Our commitment to quality has not surpassed our desire to sell volume. While we've continued to increase the number of bulls we sell every year, they must be good and right. The best way to guarantee bulls is to only sell the good ones in the first place. The second constant over the past 10 years is our tremendous customer base. Through thick and thin we have a following of faithful customers that have helped to ensure that we stay in business for the long haul. Annually 75-80% of our bulls sell to repeat customers. The following are a few of the highlights from the past 9 sales:

## High Selling Bull

- 2003 Wayne Grant, Killam, AB
- 2004 Brad & Christine Tymkow, Dapp, AB
- 2005 Don Petryshen, Dapp, AB
- 2006 John & Tammy LeBlanc, Sunset House, AB
- 2007 Fred & Rita vandeLigt, Jarvie, AB
  
- 2008 Brad & Christine Tymkow, Dapp, AB
- 2009 Fred & Ronalie DeBock, Barrhead, AB
  
- 2010 Jason & Trisha French, Mayerthorpe, AB
- 2011 Jason & Trisha French, Mayerthorpe, AB

## Volume Buyer

- Clyde McCoy, Clyde, AB (3)
- Dan Homeak, Rich Valley, AB (3)
- Ross & Beau Lyons, Vimy, AB (2)
- Dave & Myrna vandeLigt, Jarvie, AB (4)
- Jay & Robin Booth, Flatbush, AB (4)
- Clyde McCoy, Clyde, AB (5)
- Ken & Joanne Kaliel, Fawcett, AB (3)
- John, Tammie & Melissa LeBlanc (3)
- Lorne & Terryl Koch, Jarvie, AB (3)
- Chris Fauque, Nestow, AB (3)
- Keith Anderson, Athabasca, AB (3)

Join us on Saturday, March 3rd for our 10th annual sale. We promise another strong set of bulls designed for the top cattlemen. We will be featuring some unique genetic accomplishments including the first and only sons of two British bulls. We are the only herd in North America to offer these genetics. The beef industry continues to improve, but one thing is really noticeable. In the history of the industry there has never been larger spreads in calves of the same weight range. Top quality genetics are making a huge difference. Don't miss the bull you really want for \$500 because over the life of the bull on a modest 100 calves that only amounts to \$5 per calf.

The sale will start at 3:00 PM and will be followed by a customer appreciation supper as well as some entertainment. New this year will be the Spring Barn Dance which will start at 8:00 PM. All proceeds from this will be donated to the Flatbush 4-H Beef Club. There will also be a fundraising dutch auction of raffle tickets on a calf shelter for the Pembina West 4-H Beef Club. All proceeds from the dance, silent and live auction items go to these 4-H clubs so come out and support these young cattlemen.

We look forward to your appraisal of our bulls. If you have any questions at all please do not hesitate to contact us or our sales staff.

Regards,

*Byron*



**Byron & Gwen**

**Kailey, Wynton & Landon Brandl**

**Box 128 Jarvie, AB T0G 1H0**  
**Ph/Fx: 780-954-2599**  
**Email: brandl@mcsnet.ca**



# Black Angus & Red Angus Bull Sale

• Saturday March 3rd 2012 •

**Live Auction Sale Time: 3:00 PM**

Sale Location: Brandl Cattle Co New Sale Facility  
See Back Cover for Map to Farm

## SALE DAY PHONES

Brandl Cattle Co. (780) 954-2599  
Byron Brandl Cell (780) 349-1765  
Gwen Brandl Cell (780) 349-1704  
Jason French (780) 305-9789  
Mark Shologan (780) 699-5082

Brandl Cattle Co. invites everyone to come for supper  
and entertainment after the sale ..  
**THEN NEW THIS YEAR...Spring Barn Dance**  
with all proceeds to Flatbush 4-H Beef Club 8PM - 1AM -  
Details on Page 5.

**Sale goes no matter the weather - Please come  
and view the the cattle anytime prior to the sale.**

## *Offering 44 Bulls*

**27 Black Angus Bulls • 17 Red Angus Bulls**

## *Sale Staff*

### **Auctioneer:**

Ryan Dorran Cell: 403-507-6483

### **Ringmen:**

Robert Lind: 780-542-0123

Bryon Wolters: 780-581-7711

### **Sale Reps:**

Shane Castle - Ph: (306) 741-7485

Bryan McKenzie - Ph: (403) 627-8266

Jason French - Ph: (780)-305-9789

### **DLMS Online Internet Bidding:**

Mark Shologan - 780-699-5082

See page 5 complete details.

### **Insurance:**

Canadian Farm Insurance

Monica Czech - (780) 732-8613

### **Special Guest Representatives:**

Brian Good - Canadian Angus Assn Commercial Fieldman

## *Local Accomodations*

Westlock Inn

Ph. 780-349-4483

West 18 Inn

Ph. 780-349-4102

If you wish we would be happy to arrange accommodations for you.

## *Live Auction Video Sale*

We are continuing our sale format from last year. We are going to host a live video auction sale in our new sale facility on the farm.

With this new format we will have a live auctioneer and a starting sale time of 3:00 pm. with supper and entertainment to follow.

During the sale video clips of the bulls will play on the big screen, and the bulls will be displayed just outside the barn in their regular pens.

This sale format is very successfully and we feel that is the best way to keep stress low on the cattle. If you have any questions please call BCC.

**Video Clips for Sale lot  
available at: [www.cattlevids.ca](http://www.cattlevids.ca)**



**CATTLEVIDS.CA**

## *Sight Unseen Purchase Plan*

We would like you to attend our sale, but if you can not you can have Byron or any of our sales staff personally handle your purchase. Call them with your specifications and discuss the offering, preferably a week before the sale. Byron or any of the sales staff will gladly assist you with your sale selections and represent you on sale day. We guarantee full satisfaction upon delivery or you don't own them.

## *Bull Delivery Options*

### **Option 1 - Immediate Pick Up**

Buyer takes immediate possession and transports own bulls within 3 days of sale and receives a \$50/bull discount on the purchase price.

### **Option 2 - BCC Delivery**

Brandl Cattle Co. will deliver bulls free of charge at our convenience following the sale with in 500 KM of Jarvie, further will be at cost.

### **Option 3 - BCC Development**

Yearling bulls can be left at Brandl Cattle Co. after April 15 at the buyers risk and a charge of \$3.00/ day until buyer wishes to transport own bulls. Insurance recommended.

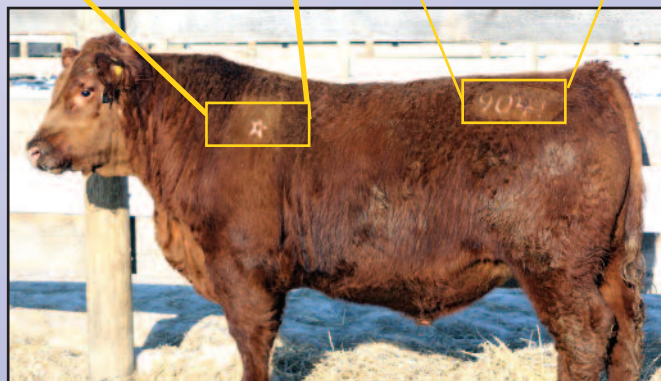
## *Volume Buyers Discount*

2012 Volume Discount -

3 bulls 3%, 4 bulls 4%, 5 or more bulls 5%

## *Freeze Brand Number*

All bulls carry the 5 point star brand on the left shoulder - BCC Brand of Quality and an individual freeze brand with their own number....no more reading tattoos when the bulls loose their ear tags!



*View Sale Catalogue  
& Videos Online at:*

[www.brandlcattleco.com](http://www.brandlcattleco.com)

[www.dlms.ca](http://www.dlms.ca)

[www.cattlevids.ca](http://www.cattlevids.ca)

## **The 10 and Over Club** (Who will be the first to 20?)

Uphill Feeders -  
Gordon, Bev Colby & Dylan Hansen 18 Bulls  
Jay & Robin Booth 18 Bulls  
Dave & Myrna van de Ligt 12 Bulls  
French Creek Farms -  
Michel & Rhonda Kaniel/  
David & Mary Kaniel 11 Bulls  
Allen Crop & Cattle -  
Earl & Ward Allen 11 Bulls

Eastlight Farms -  
Fred & Rita/Donald van de Ligt 10 Bulls  
Brad & Christine Tymkow 10 Bulls  
**Almost There**  
K5 Farms - Ken & Joanne Kaniel 9 Bulls  
Clyde McCoy 9 Bulls  
Bill & Barb McCarthur 9 Bulls  
Lyons - Ross & Penny/ Beau & Cristy 8 Bulls  
Rinas - Barry & Stacey/ Don & Dorothy 8 Bulls

# Can't make it to the sale?

## Bid Live Online.



### Instructions for Viewing And Bidding At the Sale

1. Visit [www.dlms.ca](http://www.dlms.ca)
2. Fill out the registration form located under registration.
3. Click on downloads and follow the four step instructions located on the screen.
4. Click test your computer. You will see the Test Video and Bid Control Box.

To be Approved as a bidder or any other questions please e-mail [mshologan@dlms.ca](mailto:mshologan@dlms.ca) or call Mark - 780-699-5082

With DLMS you can Watch, Listen & Bid on Your Computer just like you were there with Online Bidding over the Internet

Direct Livestock Marketing Systems  
*We're Making the Connection*

DLMS  
[www.dlms.ca](http://www.dlms.ca)

**Visit [www.dlms.ca](http://www.dlms.ca) today !**

## *Come for the bulls.....*

*but stay for the fun and great entertainment!*

Brandl Cattle Co. invites everyone to come for supper and entertainment after the sale ... THEN NEW THIS YEAR.... Spring Barn Dance with proceeds to the Flatbush 4-H Beef Club 8PM - 1AM

- all bull customers past and present get in free.
- tickets \$15 each all proceeds to Flatbush 4-H Beef Club
- DJ services by Terikel Tunes
- silent auction items
- all proceeds from dance ticket sales and silent auction items will be donated to the Flatbush 4-H Beef Club

### Pembina West 4-H Beef Club Calf Shelter Raffle

Last year Bill Fauque approached me with a very generous donation from himself and Peter Hanlon. They donated a calf shelter to the Flatbush 4-H Beef Club as a fundraiser. We sold raffle tickets by Dutch Auction at the start of the sale and it was a great success.

This we we are pleased to announce that Bill and Peter have donated a shelter to the Pembina West 4-H Beef Club. Brandl Cattle Co. is more than happy to offer the venue for another ticket auction. Following the post sale supper we will have a dutch auction for raffle tickets.



On behalf of both Flatbush 4-H Beef Club and Pembina West 4-H Beef Club  
ThankYou everyone for your generosity!



## *Yearling Bull Herd Health Protocol*

All bulls have been vaccinated for Blackleg, Tetanus, IBR, PI3, BVD and other associated viruses/diseases including Footrot as per the following schedule:

- Birth - Powerbac Probiotic, Power Boost Vitamin & Mineral Drench
- March/April - Covexin 9, Pyramid MLV4, Somnustar PH, Injectable Ivomec
- September - Vision 8 Somnus, Vista Once, Ivomec Pour-On
- January - Fusogard
- February - Fusogard

## *Semen Testing*

All of the bulls selling will have satisfactorily passed a semen test by Roy Lewis, DVM - Westlock, AB prior to sale.

## *Footrot Vaccine*

All Brandl Cattle Co bulls selling in the 2012 sale have received 2 shots of Fusogard hoofrot vaccine, this is to help keep the bulls working for you our customers.

### **NO BULL.**

No bull? No breeding program. When you've got lame bulls due to footrot, it's like having no bulls at all. Fusogard® vaccine is the simple and straightforward way to help prevent footrot and keep your breeding program on track.

FUSOGARD® | POWERFUL | ECONOMICAL | PROACTIVE

**FUSOGARD®**



© 2011 Novartis Animal Health Canada Inc. Fusogard® is a registered trademark of Novartis AG; Novartis Animal Health Canada Inc., licensed user.

 **NOVARTIS**  
ANIMAL HEALTH

# Brandl Cattle Company Black Reference Sires

## Ref Sire *Bosullo Elmark Q209*



BW	<b>86</b>
205 Day Wt.	<b>879</b>
365 Day Wt.	<b>1510</b>

WEDDERLIE NETMARK A281  
**SIRE: BOSULLOW BLACKMARK E151**  
 BOSULLOW BLACKIRD C092

NIGHTINGALE ECHT A060  
**DAM: BOSULLOW ERICA C085**  
 BOSULLOW ERICA W3

- Total Outcross to North American genetics
- Explosive performance
- Top 1% EBV's for weight, milk, carcass & fertility



## Ref Sire *BCC Prairie Moon 5570*



BW	<b>98</b>
205 Day Wt.	<b>725</b>
365 Day Wt.	<b>1209</b>

SANDY BAR CASTLEROCK 173P  
**SIRE: SAR SILVER PRAIRIE 173S**  
 SFL BLUEBIRD LASS 15F

BCC JAZZ 044  
**DAM: BCC CLARICE 26K**  
 PJ'S CINDY-LEE 15'97

- Outcross pedigree with generations of Muscle, Performance & Maternal Power
- His dam is an ELITE female with a weaning index of 109 on 10 calves

## Ref Sire *BCC Premium Edition 47U*



BW	<b>85</b>
205 Day Wt.	<b>769</b>
365 Day Wt.	<b>1200</b>

HOFF LIMITED EDITION SC 594  
**SIRE: BCC SPECIAL EDITION 36R**  
 CLOVER MEADOW HEATHER 5H

BCC EILEENMERE LAD 26G  
**DAM: BCC LYNN 88J**  
 PJ'S LYNN 31'97

- Exceptional calving ease with performance
- His dam is an ELITE female with a weaning index of 107 on 10 calves
- Sold in our 2011 sale to Wayne McNary for \$5500



## Ref Sire *Justamere 422 Eric 72870*



BW	<b>85</b>
205 Day Wt.	<b>735</b>
365 Day Wt.	<b>1200</b>

EXAR SUDDEN IMPACT 1537  
**SIRE: EXARPAF 422**  
 PAF 8571 AT 1013

SAR DIVERSITYS TRAVELER 2280  
**DAM: ENNS DIVERSITY'S ERICA 25P**  
 S A R STOCKMAN ERICA 2626

- Purchased from Justamere Dispersal in 2009
- Calving ease with excellent performance

# Black Angus



Lot  
★  
7Y

*BCC Elmark 7Y*

**BCC 7Y DOB: 15 JAN 2011**

BW	205 Day Wt.	365 Day Wt.
<b>90</b>	<b>671</b>	<b>1150</b>

BOSULLOW BLACKMARK E151  
**SIRE: BOSULLOW ELMARK G209**  
 BOSULLOW ERICA C085  
 LAMBS OVERDRIVE 45E  
**DAM: BCC MISS CASSIE 46M**  
 BJ MISS CASSIE 29'89

We're kicking this off with some power. The Elmark sons are definitely one of the strongest sire groups we've ever raised. 7Y's dam is a deep bodied excellent uddered Overdrive daughter. Maternal brothers have sold to Clyde McCoy, and Ben and Hendria Hospers. 46M is the grand dam to Lot 125Y.



*-Kailey -  
Champion Steer*



*- Wynton -  
Champion Novice Calf*





# Black Angus



*Dam:*  
*BCC Black Velvet 7S*



Lot  
★  
19Y

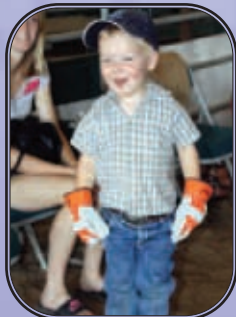
*BCC Elmark 19Y*

**BCC 19Y DOB: 19 JAN 2011**

BOSULLOW BLACKMARK E151  
**SIRE: BOSULLOW ELMARK G209**  
BOSULLOW ERICA C085  
HYLINE RIGHT WAY 781  
**DAM: BCC BLACK VELVET 7S**  
BCC BLACK VELVET 47H

BW	205 Day Wt.	365 Day Wt.
98	745	1258

A weaning index of 108 and a 365 day index of 123. This is the #1 gaining Black bull. The 7S dam has an average weaning index of 111 on 4 calves. A maternal brother sold to Keith and Lindy Wiart. This is one of our greatest accomplishments of Muscle, Performance and Maternal Power.



# Black Angus



*Dam:*  
*BCC Black Velvet 34M*



Lot  
★  
20Y

*BCC Elmark 20Y*

**BCC 20Y DOB: 19 JAN 2011**

**BOSULLOW BLACKMARK E151**  
**SIRE: BOSULLOW ELMARK G209**  
BOSULLOW ERICA C085  
LAMBS OVERDRIVE 45E  
**DAM: BCC BLACK VELVET 34M**  
BCC BLACK VELVET 52H

BW	205 Day Wt.	365 Day Wt.
92	751	1173

From a dam by the CAA ELITE sire "Overdrive". 20Y had a weaning index of 110. A maternal brother sold to Fred & Rita van de Ligt for \$3800 and a maternal sister recently sold in the Canadian Legacy Sale to Blackwell Angus for \$2600. The grand dam 52H is an ELITE Jack Daniels daughter and was one of the all time productive females raised at Brandl Cattle Co.

*Congratulations to local Junior  
Cattlemen on their success with  
Brandl Cattle Co. Genetics*



*Grand Champion Steer*

**Hailey Booth**



*Reserve  
Champion Steer*

**Ashley Booth**

# Black Angus



*Dam:*  
*BCC Black Velvet 32H*



Lot  
★  
26Y

*BCC Elmark 26Y*

**BCC 26Y DOB: 20 JAN 2011**

BW	205 Day Wt.	365 Day Wt.
<b>105</b>	<b>791</b>	<b>1211</b>

BOSULLOW BLACKMARK E151  
**SIRE: BOSULLOW ELMARK G209**  
 BOSULLOW ERICA C085  
 BCC NEW DEAL 41F  
**DAM: BCC BLACK VELVET 32H**  
 BCC BLACK VELVET 23F

Selling your calves by the pound? Note the 791 lb 205 day weight giving him a weaning index of 114 off of a 13 year old cow! 32H has a weaning index of 106 on 12 calves. Maternal brothers have sold to Bill & Barb McCarthur as well as Luke Boelman. 26Y is also a maternal brother to BCC Black Velvet 46U the 2010 Alberta Farmer Express Show Series High Point Female. Remember that the only place in North America that you can buy an Elmark son is Brandl Cattle Co. on March 3rd.



*Reserve Champion*  
*Cow Calf Pair*  
**Ashley Booth**



*Reserve Grand*  
*Champion Heifer*  
**Daylen Lebsack**



*Reserve Champion Heifer*  
**Hailey Booth**

# Black Angus

## BCE Premium Edition 34Y



**BCC 34Y DOB: 23 JAN 2011**

BCC SPECIAL EDITION 36R

**SIRE: BCC PREMIUM EDITION 47U**

BCC LYNN 88J

BCC STAMINA 22T

**DAM: BCC MISS BLOSSOM 59W**

BCC MISS BLOSSOM 22S



BW	79
205 Day Wt.	705
365 Day Wt.	1174

A low BW son of Premium Edition 47U that sold to Wayne McNary for \$5500. The dam is sired by Stamina 22T who was a \$5000 bull to Fred & Ronalie DeBock. Here's a "sleep at night" calving ease heifer bull with enough performance to also go on your cows.

## BCE Hardrock 35Y



**BCC 35Y DOB: 24 JAN 2011**

SAR SILVER PRAIRIE 173S

**SIRE: BCC HARDROCK 45W**

BCC LYNN 88J

BCC BIG DEAL 78S

**DAM: BJ MISS BURGESS 14W**

BJ LADY ANN 29T



BW	83
205 Day Wt.	702
365 Day Wt.	1069

Here's a low BW heifer bull that is smooth and well muscled. The sire is an excellent son of Silver Prairie that sold to Bob & Rose Brandl for \$3700 and now that they sold their cows he is working for Orval Hayes at Smith.

## BCE Premium Edition 41Y



**BCC 41Y DOB: 27 JAN 2011**

BCC SPECIAL EDITION 36R

**SIRE: BCC PREMIUM EDITION 47U**

BCC LYNN 88J

SAR SILVER PRAIRIE 173S

**DAM: BCC MISS BLOSSOM 10W**

BCC MISS BLOSSOM 30P



BW	76
205 Day Wt.	701
365 Day Wt.	1085

Premium Edition 47U does a lot of things right. Low birth weight, deep bodied, easy fleshing sons with good hair coats.



## BCC Bardolier 60Y

**BCC 60Y DOB: 02 FEB 2011**

BCC HONKY TONK 21M

**SIRE: BJ MR BAROS 95U**

B J BLACKCAP 6N

BCC HONKY TONK 21M

**DAM: BJ BLACK VELVET 16U**

BJ BLACK VELVET 1'93



BW **76**  
205 Day Wt. **660**  
365 Day Wt. **1033**

Super Low BW with depth and thickness. Sired by a full brother to Mr Baros 89T. A predominantly Canadian pedigree on an excellent calving ease sire.



## BCC Bardolier 63Y

**BCC 63Y DOB: 04 FEB 2011**

BCC HONKY TONK 21M

**SIRE: BJ MR BAROS 95U**

B J BLACKCAP 6N

PJ'S NEW FRONTIER 14'98

**DAM: BJ ERICA 6K**

CLOVER MEADOW ERICA 12H



BW **98**  
205 Day Wt. **733**  
365 Day Wt. **1146**

Style, performance and a great maternal package. Just look at his dam and grand dam. Wouldn't you like to own a whole herd of cows like these?

*Paternal Grand Dam: BJ Blackcap 6N*

*Dam: BJ Erica 6K*



## BCC Prairie Storm 69Y

**BCC 69Y DOB: 10 FEB 2011**

SAR SILVER PRAIRIE 173S

**SIRE: BCC PRAIRIE MOON 55W**

BCC CLARICE 26K

TOMIL GNEMERN GR 137N

**DAM: BCC BLACK VELVET 8J**

BJ BLACK VELVET 26'89



*Dam: BCC Black Velvet 8J*

BW **93**  
205 Day Wt. **685**  
365 Day Wt. **1103**

A direct son of our faithful old 8J cow. Still in production at 12 years of age, she has entered our embryo transplant program. This bull has maternal power stacked in his pedigree. His paternal grand dam 26K is an ELITE female with a weaning index average of 109 on 10 calves while the 8J dam is an ELITE female with a lifetime index of 102 on 11 calves. Maternal brothers have sold to Janice Pitman, Dave van de Ligt, Ken Keldsen, Edmund Kolesar, Ward Allen and David Borody for an average of \$3467. This bull is a sure bet to give you a set of fertile productive daughters with excellent udders.

# Black Angus



*BCC Impact 71Y*



## *BCC Impact 71Y*

**BCC 71Y DOB: 10 FEB 2011**

TWIN	BW	205 Day Wt.	365 Day Wt.
	76	664	1042



## *BCC Impact 72Y*

**BCC 72Y DOB: 10 FEB 2011**

TWIN	BW	205 Day Wt.	365 Day Wt.
	74	635	1014



*Dam:*  
*BCC Black Velvet 7T*

EXARPAF 422  
**SIRE: JUSTAMERE 422 ERIC 728W**  
 ENNS DIVERSITY'S ERICA 25P  
 BCC SHOCKIN' Y'ALL 1P  
**DAM: BCC BLACK VELVET 7T**  
 BCC BLACK VELVET 22N

To be honest we don't usually even bother with twins, but these two guys are pretty neat. Eric and 7T are a great sire and dam in their own right. These twins are small headed, smooth shouldered and well structured. 7T was undefeated in the show ring as a yearling heifer in the Alberta Farmer Express Show Series. She is becoming an even better brood matron with a son selling to Brad & Christine Tymkow for \$2900 and a heifer to Steinley Farms, Sask for \$3100. The 22N grand dam is recognized as an ELITE female by the Canadian Angus Assn. with a weaning index of 106 on 6 calves.

We encourage you to take advantage of the livestock insurance that will be available sale day.



**Canadian Farm  
Insurance Corp.**

**Monica Czech**  
 Phone: (780) 732-8613  
 Fax: (780) 448-0281  
 Toll Free: 1-877-472-8678

Suite 375, 13220 St. Albert Trail • Edmonton, AB T5L 4W1  
 cfauque@cdnfarmins.com • www.cfiinsurance.ca  
 Commercial • Personal Lines • Farm • Livestock



## *BCC Bardolier 85Y*

**BCC 85Y DOB: 16 FEB 2011**

BW	85
205 Day Wt.	618
365 Day Wt.	1000

BCC HONKY TONK 21M  
**SIRE: BJ MR BAROS 95U**  
 B J BLACKCAP 6N  
 BCC DYNASTY 39K  
**DAM: B J MISS BURGESS 46N**  
 BCC MISS BURGESS 14K

Low BW. Lots of deep bodied, easy fleshing cattle stacked in this pedigree. Mr. Baros and Dynasty equals fertility and longevity.



## BCC Prairie Storm 76Y

**BCC 76Y DOB: 11 FEB 2011**

SAR SILVER PRAIRIE 173S

**SIRE: BCC PRAIRIE MOON 55W**

BCC CLARICE 26K

B T ULTRAVOX 297E

**DAM: BCC LYNN 2R**

BCC LYNN 88J

BW	<b>94</b>
205 Day Wt.	<b>691</b>
365 Day Wt.	<b>1175</b>



The #2 gaining black bull in the sale with an ADG of 3.02. The 2R dam was the first animal Kailey ever showed all by herself. Two ELITE grand dams in 26K and 88J. Prairie Moon has done an excellent job for us and is now working for Trevor & Kristy Lebsack.



## BCC Premium Edition 86Y

**BCC 86Y DOB: 16 FEB 2011**

BCC SPECIAL EDITION 36R

**SIRE: BCC PREMIUM EDITION 47U**

BCC LYNN 88J

SAR SILVER PRAIRIE 173S

**DAM: BCC MISS BURGESS 78W**

BCC MISS BURGESS 22M

BW	<b>83</b>
205 Day Wt.	<b>697</b>
365 Day Wt.	<b>1073</b>



A heifers first calf with Calving Ease, Muscle, Performance & Maternal Power. 47U has consistently sired cattle that do the right things. Notice how we like to stack those ELITE females with 88J on the top of the pedigree having a weaning index of 107 on 10 calves and 22M on the bottom with an index of 107 on 8 calves so far.



## BCC Premium Edition 91Y

**BCC 91Y DOB: 17 FEB 2011**

BCC SPECIAL EDITION 36R

**SIRE: BCC PREMIUM EDITION 47U**

BCC LYNN 88J

SAR SILVER PRAIRIE 173S

**DAM: BCC LYNN 64W**

BCC LYNN 7P

BW	<b>74</b>
205 Day Wt.	<b>691</b>
365 Day Wt.	<b>1070</b>



## BCC Prairie Storm 99Y

**BCC 99Y DOB: 20 FEB 2011**

SAR SILVER PRAIRIE 173S

**SIRE: BCC PRAIRIE MOON 55W**

BCC CLARICE 26K

BCC GREAT NORTHERN 45H

**DAM: BCC MISS BURGESS 45L**

BCC MISS BURGESS 13G

BW	<b>90</b>
205 Day Wt.	<b>658</b>
365 Day Wt.	<b>1105</b>

Moderate BW and from an ELITE female with a life-time weaning index of 103 on 9 calves. 99Y had a gain index on feed of 108. Maternal brothers have sold to Ross & Beau Lyons, Robert & Connie Amundson, and two to Jay and Robin Booth.

We believe in line breeding for consistency. Note the Lynn family on top and bottom of this pedigree. An ultra low BW and still very good performance in this young bull from a first calf heifer. Premium Edition 47U strikes again!

# Black Angus



*Dam: BCC Miss Burgess 14K*

Lot  
★  
92Y

*BCC Bardolier 92Y*

**BCC 92Y DOB: 17 FEB 2011**

BW	205 Day Wt.	365 Day Wt.
97	693	1079

**BCC HONKY TONK 21M**  
**SIRE: BJ MR BAROS 95U**  
 B J BLACKCAP 6N  
 BCC JAZZ 044  
**DAM: BCC MISS BURGESS 14K**  
 BCC MISS BURGESS 135

A straight Canadian pedigree in a deep bodied, easy fleshing meat machine. If your looking to the future with a herd of high maternal, moderate framed black cows here is your solution. A maternal brother sold to Mitchell Benson.

Lot  
★  
98Y

*BCC Impact 98Y*

**BCC 98Y DOB: 19 FEB 2011**

EXARPAF 422

**SIRE: JUSTAMERE 422 ERIC 728W**  
 ENNS DIVERSITY'S ERICA 25P

BCC SHOCKIN' Y'ALL 1P

**DAM: BCC LADY WREN 28T**  
 BCC LADY WREN 42N



BW	79
205 Day Wt.	683
365 Day Wt.	1114

This long, smooth young bull has been one of my favorites all along. Low BW from a four year old cow. A maternal brother sold to Leonard and Doris Stewart for \$3800. Generations of low birth weight bred in along with very good performance. The 42N grand dam is recognized as an ELITE female by the Canadian Angus Assn.





### BCC Bardolier 105Y

**BCC 105Y DOB: 02 FEB 2011**

BCC HONKY TONK 21M

**SIRE: BJ MR BAROS 95U**

B J BLACKCAP 6N

BCC HONKY TONK 21M

**DAM: BJ ERICA 22U**

BJ ERICA 14'9S

BW	100
205 Day Wt.	713
365 Day Wt.	1038

A straight Canadian pedigree on this bull with a weaning index of 102. Lots of spring of rib and muscle in these Mr. Baro's sons.



### Black Angus BCC Prairie Storm 106Y

**BCC 106Y DOB: 24 FEB 2011**

SAR SILVER PRAIRIE 173S

**SIRE: BCC PRAIRIE MOON 55W**

BCC CLARICE 26K

BCC GREAT NORTHERN 45H

**DAM: BCC BLACK VELVET 18P**

BCC BLACK VELVET 43H

BW	76
205 Day Wt.	615
365 Day Wt.	1002

Consistently low BW from this dam. In fact she has averaged 76 lbs on 6 calves. Maternal brothers have sold to Ken & Joanne Kaliel and Kwasney Farms.



### BCC Impact 111Y

**BCC 111Y DOB: 27 FEB 2011**

EXARPAF 422

**SIRE: JUSTAMERE 422 ERIC 728W**

ENNS DIVERSITY'S ERICA 25P

BCC SPECIAL EDITION 36R

**DAM: BCC LADY WREN 56U**

BCC LADY WREN 2S

BW	90
205 Day Wt.	748
365 Day Wt.	1095

This attractive, correct structured young sire carries as much potential as any in this sale. He is a maternal brother to the \$4400 high selling bred heifer to Sunny Grove Angus, Radville, SK. The 56U dam has a weaning index of 114 on her first two calves.



### BCC Impact 112Y

**BCC 112Y DOB: 27 FEB 2011**

EXARPAF 422

**SIRE: JUSTAMERE 422 ERIC 728W**

ENNS DIVERSITY'S ERICA 25P

BCC NEW DAY 48S

**DAM: BCC BLACK VELVET 46U**

BCC BLACK VELVET 32H

BW	90
205 Day Wt.	714
365 Day Wt.	1144

A royally bred herdsire prospect, being a son of the 2010 Alberta Farmer Express Show Series High Point Female. This bull has a weaning index of 104 and a yearling index of 103. He is a maternal brother to the \$5100 bull sold to Joe Olson in last years sale.



*Dam: BCC Black Velvet 46U*

# Black Angus

## BCC Impact 116Y



**BCC 116Y DOB: 01 MAR 2011**

EXARPAF 422

**SIRE: JUSTAMERE 422 ERIC 728W**

ENNS DIVERSITY'S ERICA 25P

BCC NEW DAY 48S

**DAM: BCC LADY WREN 61U**

BCC LADY WREN 42N

BW	<b>81</b>
205 Day Wt.	<b>791</b>
365 Day Wt.	<b>1236</b>

We really should have a photo of this bull. Maybe the best numbers in the entire sale! #1 for gain from birth to 205 day wt. Note that his dam is by the same sire as the 46U dam of lot 112Y. BCC New Day 48S was the \$5000 bull to Eldon Nicholson, Raymore, SK in our 2008 sale. Low BW, excellent performance, deep and thick. His dam is moderate and functional.

# Livestock Solutions

Feedlot and Herd Management  
Nutrition Consulting through to  
Market Strategies

## Al Hersberger Consultant

403 556-0063

*Let my experience be your advantage*



**BCC 125Y DOB: 07 MAR 2011**

EXARPAF 422

**SIRE: JUSTAMERE 422 ERIC 728W**

ENNS DIVERSITY'S ERICA 25P

BCC SHOCKIN' Y'ALL 1P

**DAM: BCC MISS CASSIE 53T**

BCC MISS CASSIE 46M

BW	<b>98</b>
205 Day Wt.	<b>774</b>
365 Day Wt.	<b>1217</b>

Whether your building a set of cows or a pen of feeder calves this bull has the tools to get the job done. Length, muscle & maternal power. Note that the 53T dam is a maternal sister to the Lot 7Y bull at the start of the catalogue.



**BCC 126Y DOB: 08 MAR 2011**

EXARPAF 422

**SIRE: JUSTAMERE 422 ERIC 728W**

ENNS DIVERSITY'S ERICA 25P

BCC SPECIAL EDITION 36R

**DAM: BCC MISS CASSIE 25U**

BCC MISS CASSIE 46M

BW	<b>83</b>
205 Day Wt.	<b>720</b>
365 Day Wt.	<b>1157</b>

Another low BW son of Eric that put up some really good growth numbers. The dams of 126Y and 125Y are both maternal sisters. Both of them being out of Cassie 46M they also trace back to Miss Cassie 29'89 who produced until she was 17 years old. Not only do you get calving ease, muscle and performance but you get fertility and longevity as well!



# Black Angus



## BCC Prairie Storm 127Y

**BCC 127Y DOB: 08 MAR 2011**

SAR SILVER PRAIRIE 173S

**SIRE: BCC PRAIRIE MOON 55W**

BCC CLARICE 26K

LAMBS OVERDRIVE 45E

**DAM: BCC BLACK VELVET 22N**

BCC BLACK VELVET 11H



BW **93**  
205 Day Wt. **698**  
365 Day Wt. **1133**

Don't pass this guy up because he is the youngest black bull in the sale. This is probably the stoutest, heaviest muscled bull in the sale. The dam is an ELITE daughter of Overdrive with a weaning index of 104 on 7 calves. Maternal brothers have sold to Paul & Lorraine Boulерice as well as Lyle & Sharon Hogarth at Wandering River. 22N is a maternal sister to BCC Superbull 19M who did an excellent job for Wayne Grant at Spruceview Angus, Killam as well as BCC Bardolier 64U who sired the \$4400 BCC Lady Wren 1X at the recent Canadian Legacy Sale.



## Brandl Cattle Company Red Reference Sires

Ref Sire

### Red BCC Emperor 54W

RED COMPASS MULBERRY 449M

**SIRE: RED FINE LINE MULBERRY 26P**

RED DUS FAYETTE 8G

RED BADLANDS BONUS 702

**DAM: RED JSF CHEROK 15M**

RED JSF CHEROK 19J



BW **93**  
205 Day Wt. **737**  
365 Day Wt. **1345**

- One of only 3 Red Angus bulls in Canada that is +3 or lower on BW and still +55 WW +100 Y and +47TM
- Calving Ease, Muscle, Performance, Maternal Power
- Tremendous Muscle

Owned with Jason & Trisha French, Luv-N-It Cattle Co., Mayerthorpe, AB

# Red Angus

## Red BCC Piper 13Y



**BCC 13Y DOB: 16 JAN 2011**

AULHOUSEBURN KARLOS

**SIRE: NIGHTINGALE RED PIPER**  
NIGHTINGALE PRECSPRINCESS

RED BUF CRK CHF 824-1658

**DAM: RED BCR SCAARA 10N**

RED MISS SCAARA 531E



BW **96**  
205 Day Wt. **775**  
365 Day Wt. **1281**

Now for something completely different...we had the opportunity to be the only ones in North America to access some British genetics. The sire of this bull is not only outcross genetics but he is a red bull from two black parents. Red Piper is the leading bull in the UK for performance. If you want to add some length and performance to your calves this bull will do it for you. The 10N dam was purchased out of the 2007 Red Roundup Sale.



*Dam:*  
**Red BCR**  
**Scaara 10N**

## Red BCC Networth 15Y



**BCC 15Y DOB: 17 JAN 2011**

PFFR SHAQ 607

**SIRE: RED BADLANDS NET WORTH 23U**  
RED BADLANDS MEDORA 406

RED BRYLOR GOLD 55H

**DAM: RED BRYLOR SENSITIVE 188S**

RED 77 MARTA 46G



BW **92**  
205 Day Wt. **699**  
365 Day Wt. **1352**

Wow! Talk about a herdsire in the making. This is a long, smooth, well muscled, structurally correct young bull. The #1 bull on feed with an ADG of 4.08 lbs per day and a gain index of 144! Yes that's right 44% greater than the average. Do you know what that translates to on a pen of feeder steers? 44% greater = MONEY!!! This bulls dam has a beautiful udder and is super feminine. We let Wynton pick a heifer to start his own herd and he chose a Mulberry daughter from this same cow. Just watch for some great red cattle with a BCCW tattoo.

## Red BCC Sensational 11Y



**BCCK 11Y DOB: 16 JAN 2011**

GARDENS SENSATION 039 S1

**SIRE: RED BASIN SENSATION 702E**  
STEVENSON ELEMRERE 538C

RED BRYLOR MASTER PLAN 17M

**DAM: RED BRYLOR COUNTESS 41W**

RED BRYLOR COUNTESS 217T

BW **81**  
205 Day Wt. **702**  
365 Day Wt. **1061**

The Basin Sensation sons are always noted for calving ease and still having some muscle and performance. Kailey purchased the 41W dam at the 2009 Tradition With A Vision Sale. We also bought the 217T grand dam that day as one of the top selling cows at \$6000.

## Red BCC Sensational 23Y



**BCC 23Y DOB: 20 JAN 2011**

GARDENS SENSATION 039 S1

**SIRE: RED BASIN SENSATION 702E**  
STEVENSON ELEMRERE 538C

RED FINE LINE MULBERRY 26P

**DAM: RED BCC LASA 90W**

RED MEM LASA 26S

BW **79**  
205 Day Wt. **700**  
365 Day Wt. **1062**

The Basin Sensation cattle are consistent. This bull is extremely similar to the Lot 11Y bull of Kailey's, in fact compare their numbers - they're only a pound or two different across the board. Remember when we bought the rights to Mulberry for the month of May in 2008? This bulls dam is a result of that. Deep bodied, feminine and a perfect udder.



## Red BCC Emperor 40Y

**BCC 40Y DOB: 27 JAN 2011**

RED FINE LINE MULBERRY 26P

**SIRE: RED BCC EMPEROR 54W**

RED JSF CHEROK 15M

RED SSS BEDROCK 68H

**DAM: RED CRIPPS MAXINE 821U**

RED SSS MAXINE 556F



BW	<b>92</b>
205 Day Wt.	<b>822</b>
365 Day Wt.	<b>1184</b>

A young bull with an awful lot of good things in his favor! #1 weaning red bull with an index of 121. He's meaty, smooth, long, structurally correct - but that's what you would expect mating Emperor to the \$4000 female purchased from Greg Cripps at the 2009 Red Roundup Sale. The Bedrock bull has done a super job for Cripps' and could very well be the best Boomer son out there.



*Dam:  
Maxine 821U*



## Red BCC Net Worth 43Y

**BCC 43Y DOB: 29 JAN 2011**

PFFR SHAQ 607

**SIRE: RED BADLANDS NET WORTH 23U**

RED BADLANDS MEDORA 406

ANKONIAN DYNAMO

**DAM: RED BRYLOR VIDALIA 140M**

RED MEADOW CK MISS SEAMAN 31A

BW	<b>91</b>
205 Day Wt.	<b>633</b>
365 Day Wt.	<b>1090</b>

Something you don't find everyday is a son off of a Dynamo daughter. And not only that she's a maternal sister to Brylor's famous New Trend 22D bull, one of the top maternal bulls in the breed! This young bull is moderate framed with a wealth of functional cattle up close in his pedigree. A maternal sister sold to Wildcat Creek Ranch, Kansas.



*Dam: Red Brylor Vidalia 140M*



## Red BCC Emperor 48Y

**BCC 48Y DOB: 31 JAN 2011**

RED FINE LINE MULBERRY 26P

**SIRE: RED BCC EMPEROR 54W**

RED JSF CHEROK 15M

RED LAZY MC SMASH 41N

**DAM: RED COPPERHEAD DUCHESS 173U**

RED COPPERHEAD D DUCHESS 105P

BW	<b>81</b>
205 Day Wt.	<b>721</b>
365 Day Wt.	<b>1137</b>

Low BW and a weaning index of 106. Here's another Emperor son that combines calving ease with some carcass quality as well. Use this bull on your heifers as well as your cows. The 173U dam was purchased as a pick of the Copperhead calf crop through the Red Roundup Sale. Both of her first two calves have had a weaning index of 106.



# Red Angus

## Red BCC Machete 51Y

Lot  
★  
51Y

**BCC 51Y DOB: 31 JAN 2011**

RED BRYLOR STALLION 19J  
**SIRE: RED BRYLOR UNITED 211U**  
RED COMPASS MS DIVIDEND

RED ZAMA PINE 517G  
**DAM: RED BRYLOR CARRIE 37P**  
RED FCC CARRIE 403

BW **97**  
205 **681**  
Day Wt.  
365 **1068**  
Day Wt.



This bull is selling unregistered, but is no less a genetic powerhouse than the others. His dam has done a superb job having two other sons sold to a couple of very astute herds, namely Jason & Trisha French, and Don Petryshen.

## Red BCC Piper 65Y

Lot  
★  
65Y

**BCC 65Y DOB: 05 FEB 2011**

AULDHOUSEBURN KARLOS  
**SIRE: NIGHTINGALE RED PIPER H44E**  
NIGHTINGALE PRECS PRINCESS

CAMILLA BANDOLIER 85J  
**DAM: BCC BLACK VELVET 3N**  
BCC BLACK VELVET 234

BW **102**  
205 **717**  
Day Wt.  
365 **1236**  
Day Wt.



Unique is the only way to describe 65Y. The only two Red Piper sons in North America are in this catalogue. This bull is also unique in that his dam is a black cow and a daughter of Camilla Bandolier 85J born in 1977. Black Velvet 3N is a tremendously deep bodied female with a sound level udder and small teats. Her dam by Angus Acres Dancer 7Z was one of the all time high performance producing females to ever work at Brandl Cattle Co. 65Y is a maternal brother to BCC Blackberry 81W the Mulberry son that sold to Eugene & Elaine Gingras for \$3700. He just happens to be the sire of Kailey's current 4-H steer. Red Piper is on top of the leader board in the UK for performance and carcass traits. 65Y has a weaning index of 102 and a 365 day gain index of 115.

## Red BCC Macho 68Y

Lot  
★  
68Y

**BCC 68Y DOB: 08 FEB 2011**

RED BRYLOR STALLION 19J  
**SIRE: RED BRYLOR UNITED 211U**  
RED COMPASS MS DIVIDEND 815J

RED PIE DEEP CANYON 908  
**DAM: RED SSF SCOTTS MISS FREAK 217P**  
RED SSF SCOTTS MISS PRISS 156M

BW **95**  
205 **707**  
Day Wt.  
365 **1329**  
Day Wt.



The #2 gaining red bull with an ADG on feed of 3.89 and an index of 138! The 217P dam is recognized as an ELITE female with an average weaning index of 105 on 6 calves. 68Y is sired by a big powerful Stallion 19J son that we purchased at Brylor Ranch. The Stallion cattle are strong footed, fertile cattle with good hair.

# Red Angus



*Dam:*  
*Goldie 47N*



*Maternal Brother*  
*Red BCC Crimson Jewels*



## *Red BCC Machinist 70Y*

**BCC 70Y DOB: 10 FEB 2011**

BW	205 Day Wt.	365 Day Wt.
95	762	1303

RED BRYLOR STALLION 19J  
**SIRE: RED BRYLOR UNITED 211U**  
 RED COMPASS MS DIVIDEND 815J  
 RED WILD ROSE LIGHTNING 183J  
**DAM: RED RAVEN RIVER GOLDIE 47N**  
 RED WILD ROSE GOLDIE 47H

Built in performance and power. A 110 weaning index and a 120 yearling index. This is a maternal brother to Red BCC Crimson Jewels 102U who is now a \$12 000 half interest herdsire for Phil Bernie at WRAZ Red Angus in Wawota, SK. He is also a popular AI sire through Brylor semen sales throughout North America and Australia. The guess work is all gone here when it comes to **MUSCLE, PERFORMANCE AND MATERNAL POWER!!!** The 47N dam is best described as a tank. Not the tallest cow, but as much volume as you can imagine. Another maternal son sold to Don Petryshen.



## *Red BCC Macintosh 73Y*

**BCC 73Y DOB: 10 FEB 2011**

BW	<b>85</b>
205 Day Wt.	<b>662</b>
365 Day Wt.	<b>1112</b>

RED BRYLOR STALLION 19J  
**SIRE: RED BRYLOR UNITED 211U**  
 RED COMPASS MS DIVIDEND 815J  
 RED NORTHLINE ROB ROY 122K  
**DAM: RED WILBAR FAYET 627S**  
 RED SSS FAYET 760L



As structurally correct as they come. Reminds me of the old Black bull we raised called Jack Daniels. Moderate in his numbers across the board, but you show me something wrong with him...he's flawless. A young bull highly recommended for your heifers yet enough jam that you can use him on your cows. His dam is an excellent female we bought from Bryan & Tracy Wilms, Wilbar Angus, SK as a \$4000 heifer through Red Roundup. A maternal brother sold to Gary Gill and two sisters have been retained. In fact check out Lot 84Y who is out of one of those sisters.

# Red Angus

Lot  
★  
84Y

## Red BCC Clutch 84Y

**BCC 84Y DOB: 14 FEB 2011**

RED STEWART CLUTCH 19T  
**SIRE: RED SHODEREE CLUTCH 38W**  
RED SHODEREE CORALITE 9M

RED FINE LINE MULBERRY 26P  
**DAM: RED BCC FAYET 95W**

RED WILBAR FAYET 627S

BW **80**  
205 Day Wt. **699**  
365 Day Wt. **1149**

Square hipped, deep bodied, good haired, low BW and excellent performance. This bull is sired by the Clutch bull that sold in last years sale to the Kaliel's at French Creek Farms. The dam is a maternal sister to Lot 73Y. You talk about a deep broody good uddered Mulberry daughter! Some people thought it was insane to pay \$10 000 to have Mulberry for the month of May in 2008. Not only did we get a pile of advertising out of it but what a group of Mulberry daughters we have assembled for the future of our red herd!



*Dam:*  
*Fayet 95W*

Lot  
★  
90Y

## Red BCC Emperor 90Y

**BCC 90Y DOB: 17 FEB 2011**

RED FINE LINE MULBERRY 26P  
**SIRE: RED BCC EMPEROR 54W**  
RED JSF CHEROK 15M

SAR FORT ROCK 151R  
**DAM: BLACK BRYLOR 140M VIDALIA 34U**  
RED BRYLOR VIDALIA 140M

BW **88**  
205 Day Wt. **729**  
365 Day Wt. **1186**

An Emperor son with a twist to his pedigree. The dam is a daughter of the 2007 Agribition Grand Champion Black Angus Bull and from our old Dynamo daughter. This bull has a weaning index of 106 ranking him 4th at weaning. Moderate BW and excellent performance. I wouldn't be a bit scared to use this bull on good sized heifers. Notice the length of body and muscle on these Emperor sons... = carcass \$\$\$.

Lot  
★  
115Y

## Red BCC Machine Gun 115Y

**BCC 115Y DOB: 28 FEB 2011**

RED BRYLOR STALLION 19J  
**SIRE: RED BRYLOR UNITED 211U**  
RED COMPASS MS DIVIDEND 815J

RED BLUE SPRUCE LEGACY 36D  
**DAM: RED WILD ROSE GOLDIE 47H**  
RED BLUE SPRUCE GOLDIE 192Y

BW **80**  
205 Day Wt. **647**  
365 Day Wt. **1028**

This is an unregistered son of our old Goldie cow. She is the grand dam to Red BCC Crimson Jewels 102U as well as Lot 70Y. She is an ELITE female with a weaning index of 104 on 11 calves. Maternal brothers are at Ben & Hendria Hospers, Raven River Red Angus, L4L Ranches, Wild Rose Red Angus, Alpine Farms and remember the awesome 3 year old in our sale last year that Carnwood Red Angus bought from us, used two years then sold to Bill & Barb McCarthur. This old 47H cow knows how to get things done. She is one of the really good cows in the breed.

## Using Yearling Bulls

We firmly believe in the use of yearling bulls and feel that it is one of the best years of their lives. It is a time when they are easy to manage and introduce to the herd and their only concern is breeding cows. When yearling bulls are managed appropriately they will perform better over time than bulls purchased as two year olds. Here are some guidelines for care of your yearling bulls:

- Upon arrival at your ranch, keep yearling bulls separate from older bulls and feed them a maintenance ration of 5 - 8 lbs of grain or pellets and free choice of hay. Then reduce the amount of grain so they are on straight hay or grass two weeks prior to turn out.
- Where possible try to limit the bulls to 45 - 60 days of pasture service the first year. At this time remove them and put them in a separate pasture with plenty of grass or good quality hay.
- A winter feeding ration of 3 - 5 lbs of grain or pellets plus free choice hay will put the bulls in condition and allow them to grow and develop. You will also benefit by one and probably two or more years of use out of a well managed and healthy bull purchased as a yearling.





## Red BCC Clutch 124Y

**BCC 124Y DOB: 05 MAR 2011**

RED STEWART CLUTCH 19T  
**SIRE: RED SHODEREE CLUTCH 38W**  
RED SHODEREE CORALITE 9M

RED CYT LEAD-PINE 14P  
**DAM: RED BCC VELVET 23W**  
BCC BLACK VELVET 12N



BW **86**  
205 Day Wt. **698**  
365 Day Wt. **1130**

Another good Clutch son. Look at the muscle and depth of quarter on this bull. A different pedigree with Camilla Bandolier and CYT Lead Pine on the bottom. In 2008 Bryan McKenzie purchased a cow from us bred to Lead Pine, then sold her resulting bull calf for 5 figures. Nice return on investment there!



## Red BCC Clutch 130Y

**BCC 130Y DOB: 20 MAR 2011**

RED STEWART CLUTCH 19T  
**SIRE: RED SHODEREE CLUTCH 38W**  
RED SHODEREE CORALITE 9M

RED FINE LINE MULBERRY 26P  
**DAM: RED BCC CHARITY 58W**  
RED BRYLOR DVSF CHARITY 414L

BW **86**  
205 Day Wt. **674**  
365 Day Wt. **1107**

Another good Mulberry daughter gets it done again. A Clutch son from a first calf heifer. This bull has Smash, Dynamo, Mulberry and Zama Pine lined up in his ancestry so you know he's going to calve easy and leave you replacement quality females as well. 58W is a maternal sister to the dam of the \$45 000 Red Brylor Big Rock 85T as well as Red BCC Updraft 113U that sold to Trevor and Kristy Lebsack.

# Still need a bull?

**Brandl Cattle Co. has  
more bulls available  
privately on a first  
come first served  
basis.**

## What is an ELITE Angus female?

Basically it is a program set up by the Canadian Angus Association to acknowledge females that achieve a benchmark level of performance and fertility within their own herd. The following are a few of the requirements:

1. The cow must be enrolled in the Canadian Angus Performance Program
2. The cows first calf must be born and weaned within 1000 days
3. The cow must maintain a regular calving interval. Regular is considered 365 days (+/- 30 days)
4. The average of the cows first 4 calves weaning weight ratio must be at least 105
5. If a cow fails to meet these requirements she can qualify later providing the average progeny weaning ratio is 105 and she meets all the other requirements.

Brandl Cattle co. is proud to have many females recognized by the Canadian Angus Association as ELITE females. Many of the bulls in the sale have ELITE females as either their dam or grand dam.



# Northern Stars Pen Show & Sale

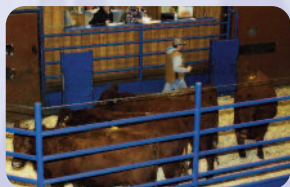
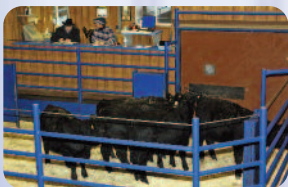
**Mark Your Calendar !!!**

**December 2012 • Triple J Auction, Westlock**

- 2012 Replacement Heifer Calf Division •
- 2011 Bred Heifer Division •

**Bigger and Better – Thousands of Dollars in Prizes!  
Exclusively for Brandl Bull Customers!**

**Plan Now –  
The Market is Hot  
and will be great on  
Replacement Fe-  
male This Fall!**



## *Thank You to Our 2011*

### *Bull Buyers*



Jason & Trisha French  
- High Selling Bull -



Keith & Sue Anderson  
- Volume Buyer -

- |                              |   |
|------------------------------|---|
| Wayne McNary                 | Ulrich & Agnes Eberhardt                |
| Jason & Trisha French        | Fred & Ronalie DeBock                   |
| Keith & Colette Conquergood  | Stan & Bernice Chamzuk - 2              |
| Peter & Linda Dirks          | Gerritt & Laura Minekus                 |
| Dave & Myrna van de Ligt -2  | Beau & Cristy Lyons                     |
| Brad & Christine Tymkow - 2  | Tony Van Boxtel                         |
| McCarthur Farms Ltd.         | Joe Olson                               |
| Jay & Loretta McEwan         | Len & Mary Mueller                      |
| Kwasney Farms - 2            | Nil-Ray Farms/<br>South Peace Ranch - 3 |
| Keith & Sue Anderson - 3     | Gurba Seed Farms                        |
| Charles & Berenice Grabler   | Rick & Matty Graf                       |
| French Creek Farms           | David & Sharon Brassard                 |
| Ed & Freda Wasuita           | Ken & Joanne Kalliel                    |
| James & Jillian Careless - 2 | Ben & Hendria Hospers                   |
| Chris Fauque                 | Darryl & Kathleen Buss                  |
| Denis Paradis                | Lyle & Sharon Hogarth                   |
| Pibroch Colony               | Movald Ranches Ltd. -2                  |
| Trevor & Kristi Lebsack - 2  | Hiwan Ranch                             |
| Fred & Rita van de Ligt - 2  | Eugene & Elaine Gingras                 |
| Bob & Nancy Foster           |   |



Res. Champ. Bred Heifers  
Donald Van De Ligt



Champion Bred Heifers  
Fred & Rita Van De Ligt



1st Place Red Angus  
Bred Heifers  
Donald Van De Ligt



Champion Heifer Calves  
Alice Benson & Larry Moore



Res. Champ. Heifer Calves  
Brad & Christine Tymkow



Honorable Mention  
Pen of 5 Bred Heifers  
French Creek Farms

## Thank You to the Northern Stars Sponsors



Honorable Mention Pen  
of 5 Heifer Calves  
Brad & Christine Tymkow



Canadian Red Angus  
Promotion Society



Westlock Veterinary Center



1st Place Red Angus  
Heifer Calves  
Steve and Val Breitkreutz.

### Terms & Conditions

**CATTLE INSPECTION:** All carry tags corresponding to the sale lot numbers. All bulls will be available for viewing prior to the sale.

**BREEDING GUARANTEE:** All bulls are sound and right and sell with a responsible breeder guarantee of satisfaction. In the event of any unlikely dispute, the regular terms and conditions, standard with the Canadian Angus Association shall apply. All complaints must be reported in writing by the buyer to the seller within 6 months and any animal returned must be free of disease and in good health.

**TERMS OF SALE:** 50% cash or cheque payable to Brandl Cattle Co. on sale day and a post dated cheque for the remaining 50% dated April 15, 2012 or pay the full amount at time of sale. No release will be given until satisfactory settlement has been made.

**VOLUME DISCOUNT:** 3 bulls 3%, 4 bulls 4%, 5 or more bulls 5% on total Purchases.

**INSURANCE:** Ownership risk to purchaser commences immediately. Livestock insurance will be available sale day.

**LIABILITY:** All persons attending this function do so at their own risk, and the owners and sale staff assume no liability, legal or otherwise, for property loss or for any accidents that may occur.

**ANNOUNCEMENTS:** Errors discovered in this catalogue will be corrected by announcements at the time of the sale and such corrections will take place over all printed material.

**DELIVERY:** Three options for Delivery **OPTION 1:** Buyer takes immediate possession and transports own bulls within 3 days of sale and receives a \$50/bull discount on the purchase price. **OPTION 2:** Brandl Cattle Co. will deliver bulls free of charge at our convenience with in 500 KM of Jarvie, further will be at cost. **OPTION 3:** Yearling bulls can be left at Brandl Cattle Co. at the buyers risk at a charge of \$3.00/day until buyer wishes to transport own bulls. Insurance recommended.

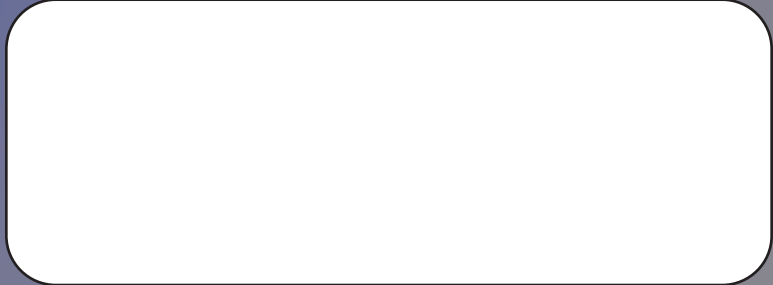
- All bulls will have passed a semen test prior to the sale. Roy Lewis, DVM - Westlock, AB prior to delivery.
- Sound cattle with good feet, legs and fertility. Cattle bred for reality, not purebred fads.
- All Brandl Cattle Co bulls selling in the 2012 sale have received 2 shots of hoofrot vaccine, this is to help keep the bulls working for you our customers
- Quality before quantity - No steers with nuts. All of our \$1800 bulls are steers!
- Uniformity - starting with a predictable cowherd, our bulls are bred similarly. Many 1/2 and 3/4 brothers.
- We plan on staying in the business for a long time. Satisfied customers will keep it that way.



**Brandl Cattle Co.**  
**Box 128**  
**Jarvie, AB**  
**T0G 1H0**



**Time Sensitive Material**



# STOKE THE FIRE!!!

*This Business is Getting Hot!*

*Now is the Time for a  
Brandl Bull*

