

Remember The Past ...



Prepare For The Future



Brandl Cattle Co.

Black Angus & Red Angus Bull Sale

March 6th, 2010

Viewing at the farm - 1:00 PM - Jarvie, AB

Video Sale at Dapp Hall - 4:30 PM - Dapp, AB

Welcome

It is always exciting for us, and a real pleasure to welcome you to the Brandl Cattle Co. Bull Sale. This is the 34th year of raising Angus cattle and the 8th year we have held this sale. As we think back over the past years there are a lot of lessons to be remembered. It is always important that we be prepared for the future. Always try to be a step ahead of where you need to be.

Over the years every generation has endured hardships, whether it was the depression, war times, or extreme high interest rates. All of our parents, grand parents and great grandparents faced hard times and persisted and prepared for the future. We've all done well because of it. Do you think when your grandfather or great grandfather arrived in this country he ever imagined you'd be where you are and have all that you have today?

We continue to enhance our program each year to offer you the best genetics that we believe are available. Early visitors to the bull pen have said they believe this to be our strongest sale offering ever.

It will be our honor and pleasure to have you appraise our cattle on March 6th. Once again it promises to be a day of fellowship with cattlemen, good times, good cattle, plenty of food and fun as the sale will include a great roast beef supper and followed up by a dance featuring the excellent band "Midnite Special" These guys played for our wedding nearly 10 years ago and we've had some requests to bring them back.

As you look through this catalog if you have any questions at all please feel free to contact us or any of the competent sales affiliates. Once again the bulls will sell by our own unique auction method that our customers enjoy so much. Are you prepared for the future?

See you March 6th,

Byron & Gwen

Brandl & Family



**Byron & Gwen
Kailey, Wynton & Landon Brandl**

**Box 128
Jarvie, AB
T0G 1H0
Ph/Fx: 780-954-2599
Email: brandl@mcsnet.ca**



Black Angus & Red Angus Bull Sale

Saturday March 6 th 2010 • 1:00 PM
Open House and Silent Auction Bidding starts
at Brandl Cattle Co.

4:30 PM

First Bids Close at Dapp hall
Cocktails, Dinner and Dance at Dapp Hall
with completion of Silent Auction
Entertainment by Midnite Special

**Video of each Bull will be played on the big screen at
Dapp Hall During the Bids Closing**

**Sale goes no matter the weather - Please Come
and view the the cattle anytime prior to the sale.**

SALE DAY PHONES

Brandl Cattle Co. (780) 954-2599
Brandl Cell (780) 349-1704
Brandl Cell (780) 349-1765
Dapp Hall (780) 954-3944
Bryan Mackenzie (403) 627-8266
Jason French (780) 305-9789

How The Auction Works

All of the bulls will be offered by Silent Auction. This is a fair and economical way for us to give everyone a chance at every bull. It's much the same as a private treaty sale, but nobody gets first pick. It's better than a live auction because you always know who you are bidding against.

The bulls will be individually priced and a corresponding sheet will be posted for each bull.

Should you wish to bid on a bull, simply write your name and bid on the sheet that you choose. These are not sealed bids. Everyone can see who is bidding and for how much. Should someone else want to bid on the same bull they must top your bid by at least \$100.

A sale order will be posted, so you may plan your bidding, in order. At 4:30 PM bidding will move to the Dapp Hall and during our supper and dance we will close the bidding on the bulls.

As we close each lot in order, we will ask if any interested parties are done bidding. If there are no more bidders the last name on the sheet will be the purchaser of the bull. Should there be more than one active bidder it will become a live auction to decide who is the purchaser of the bull.

We will return to any unsold lots at our discretion.

Lot #100R • BCC Black Bull 100R
Starting Price \$2000

Bid	Name
2000	Jim Smith
2100	John Doe
2200	Jim Smith
2300	Jack Black
2400	John Doe

*Example of
Bidding Sheet:*

When bidding closes John Doe will be the purchaser for \$2400

Offering

29 Black Angus Yearling Bulls
20 Red Angus Yearling Bulls
**1 Hybrid Red Angus/Hereford
Yearling Bull**
**1 Hybrid ¾ Maine Anjou ¼ Angus
Yearling Bull**

Sale Marketing Agents

Bryan Mackenzie
Hm: 403-627- 5676 - Cell 403-627-8266
Jason French
Hm: 780-786-9150 - Cell: 780-305-9789
Ryan Dorran
Cell: 403-507-6483

Local Accomodations

Westlock Inn
Ph. 780-349-4483
West 18 Inn
Ph. 780-349-4102

If you wish we would be happy to arrange
accommodations for you.

View Catalogue & Herd Online

WWW.BRANDLCATTLECO.COM

Sight Unseen Purchase Plan

We would like you to attend our sale, but if you can not you can have Byron personally handle your purchase. Call him with your specification and discuss the offering, preferably a week before the sale. Byron will gladly assist you with your sale selections and represent you on sale day. We guarantee full satisfaction upon delivery or you don't own them. With the relaxed pace of our silent auction you can be on the phone at the time of closing of bids on particular bulls if you desire.

Volume Buyers Discount

2010 Volume Discount - 3 bulls 3%, 4 bulls 4%, 5 or more bulls 5%

Videos

Videos of Bulls will be played on the big screen at Dapp Hall During the Bids Closing.

Footrot Vaccine

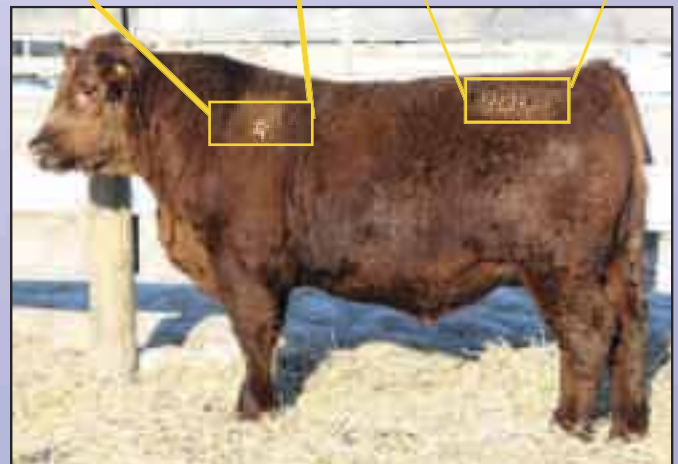
All Brandl Cattle Co bulls selling in the 2010 sale have received 2 shots of hoofrot vaccine, this is to help keep the bulls working for you our customers.

Freeze Brand Number

All bulls carry the 5 point star brand on the left shoulder - BCC Brand of Quality and an individual freeze brand with their own number....no more reading tattoos when the bulls loose their ear tags!

Semen Testing

- All of the bulls selling will have satisfactorily passed a semen test by Roy Lewis, DVM - Westlock, AB prior to delivery.



We encourage you to take advantage of the livestock insurance that will be available sale day.



**Canadian Farm
Insurance Corp.**

Monica Czech

Phone: (780) 732-8613

Fax: (780) 448-0281

Toll Free: 1-877-472-8678

Suite 375, 13220 St. Albert Trail • Edmonton, AB T5L 4W1
cfauque@cdnfarmins.com • www.cfiinsurance.ca

Commercial • Personal Lines • Farm • Livestock

**\$\$ Short on Cash \$\$
but Need a Good Bull**

Talk to us – we will take grain,
hay, straw, silage, gravel, labor
as payment.

Must be approved prior to sale.

*Come for the bulls.....
but stay for the fun and great music!*



**Country Music Group
Midnite Special Band**

**Everyone is Invited to Supper and Dance
Saturday March 6th • 4:30 PM**

First Bids Close at Dapp hall
Cocktails, Dinner and Dance at Dapp Hall
with completion of Silent Auction
Entertainment by Midnite Special
Sale & Dinner goes no matter the weather

Thanks to the Fawcett Fire Department for
Running the Bar. All proceeds from donation for
bar purchases go to the
Pembina West 4-H Beef Club

**Every One is Welcome for the Supper and
Dance Please Bring your family for a fun
filled evening with some great entertainment**

Fawcett Playground Donation Heifer



Donation
Heifer

BCC Black Velvet 370

BCC 3W DOB: 6 JAN 2009

HYLINE RIGHT WAY 781

SIRE: BCC RIGHT WAY 19S

BCC LADY WREN 24F

BCC SHOCKIN' Y'ALL 1P

DAM: BCC BLACK VELVET 34T

BJ BLACK VELVET 26'89



The W.R. Frose school at Fawcett was instructed to replace their playground. In Alberta school playgrounds are publically funded. The parent council and playground committee has a plan in place and now must move forward with fundraising. Any donations to the playground will qualify for a matching grant. The approximate cost of the new facility will be \$75 - \$80 000 or as finances dictate. The new facility will be utilized by the entire community and will accommodate children from preschool age up to Jr. High. It will also be wheel chair accessible.

Brandl Cattle Co. is donating this purebred heifer to the fundraising committee. At the start of the sale at 4:30 PM donations will be taken through a dutch auction. For every \$10 donation bid you will receive a chance to win this heifer. Donate \$500 and you get 50 chances, etc. Donations of \$500 and greater will have permanent signage recognition at the new playground. Smaller donations will receive recognition and promotion in future print materials.



SAR Silver Prairie 1738

SAR 173S DOB: 24 APRIL 2006

BW	205 Day Wt.
98	808

TC ADVANTAGE 942993
SIRE: SANDY BAR CASTLEROCK 173P
SANDY BAR LASS 29M

BELVIN BOARDWALK 11'92
DAM: SFL BLUEBIRD LASS 15F
ABERLYNN LASS 10'93

Silver Prairie was a \$7750 purchase from Stauffer Ranches in 2008. He is long, deep and easy fleshing. His 14 year old dam is still in production and is the matriarch of their strongest cow family. She is a Belvin Boardwalk daughter and out of a Wiwa Creek Atlas female. Both top and bottom of the pedigree there's generations of Maternal Power, Muscle, Performance and Longevity. After only one season of use Stacy talked us into selling him back to him as he lost his sire. This is quite a set of sons on offer. Take advantage of a good thing in limited supply.

Remember The Past.....



Prepare For The Future

Black Angus

BJ Mr Baros 89T



BJAF 89T DOB: 23 FEB 2007

LAMBS OVERDRIVE 45E
SIRE: BCC HONKY TONK 21M
BCC BLACK VELVET 47H

BCC DYNASTY 39K
DAM: B J BLACKCAP 6N
BCC BLACKCAP 304



BW	105
205 Day Wt.	846
365 Day Wt.	1276

Mr Baros is our straight Canadian pedigreed herdsire. He has the same mass, power and big strong foot of his sire and his dam is a deep bodied powerhouse of production. We recently purchased the dam from Mom and Dad so you will be seeing and hearing a lot more of her in the future. We only have a handful of sons on offer this year from Mr Baros. You should see the mouth watering set of heifer calves that we have from him.



Dam:
Blackcap 6N



BCC Stamina 22T

BCC 22T DOB: 13 JAN 2007

TC FREEDOM 104
SIRE: TC STOUT 407
TC PRIDE 2053

DOUBLE A JAZZ 44B
DAM: BJ LADY WREN 3'97
BJ LADY WREN 81'85



BW	94
205 Day Wt.	843
365 Day Wt.	1328

A powerful son of TC Stout off of the thick, deep Lady Wren 3'97 cow. She boasts a weaning index of 109 on 9 calves. It is no accident that this bull has depth, thickness and performance. He is a long, smooth, good bodied bull with a great disposition. We used 22T as a yearling, then he became our high selling bull last year to Fred and Ronalie DeBock for \$5000. The 22T calves are moderate birth weight yet performed very well. Maternal brothers to Stamina have sold to Jubilee, Ken Haughton, and Brad Tymkow, as well a sister sold to Larry Schultz in the 2006 August Event.



Dam:
BJ Lady
Wren 3'97

Remember The Past.....



Prepare For The Future

Black Angus



BCC Rightway 19S
Sire of
97W and 147W



Lot
★
9W

BCC Right U R 97W

BCC 9W DOB: 11 JAN 2009

BW	205 Day Wt.	365 Day Wt.
70	665	1058

HYLINE RIGHT WAY 781
SIRE: BCC RIGHT WAY 19S
 BCC LADY WREN 24F
 BCC SHOCKIN' Y'ALL 1P
DAM: BCC LADY WREN 28T
 BCC LADY WREN 42N

BCC Rightway 19S has done a great job for us. Calving ease, carcass quality and his first daughters look outstanding. 28T is a full sister to BCC 64S who was the high selling bull in 2007 to Fred & Rita van de Ligt at \$5300. Your heifers will love this guy.

Lot
★
14W

BCC Right On 147W

BCC 14W DOB: 14 JAN 2009

BW	79
205 Day Wt.	664
365 Day Wt.	1064

HYLINE RIGHT WAY 781
SIRE: BCC RIGHT WAY 19S
 BCC LADY WREN 24F
 BCC SHOCKIN' Y'ALL 1P
DAM: BCC BLACK VELVET 7T
 BCC BLACK VELVET 22N



Dam: BCC Black Velvet 7T

Calving ease and maternal power, this 19S son is from the super 7T female who was the undefeated Champion heifer on the 2008 Alberta Farmer Express Summer Show Series. A pedigree loaded with well muscled, hassle free cattle.

Black Angus

BCC Baros 16W

Lot
★
16W

BCC 16W DOB: 15 JAN 2009

BCC HONKY TONK 21M

SIRE: BJ MR BAROS 89T

B J BLACKCAP 6N

BJ JACK DANIELS 25'92

DAM: BCC BLACK VELVET 43H

BCC BLACK VELVET 065

BW **86**
205 Day Wt. **627**
365 Day Wt. **1049**



43H just keeps doing it year after year. This is her 10th calf with four daughters retained, one sold to Jose Saravia, Mexico and one to Clegg Angus, St. Albert. Sons have sold to Ward Betts and Dave van de Ligt. Fertility, Longevity and Calving Ease come in a tidy well muscled package here.

BCC Silversmith 20W

Lot
★
20W

BCC 20W DOB: 19 JAN 2009

SANDY BAR CASTLEROCK 173P

SIRE: SAR SILVER PRAIRIE 173S

SFL BLUEBIRD LASS 15F

LANDMARK NEW FRONTIER

DAM: PJ'S CINDY-LEE 15'97

MISS SCUD OF LARKSPUR 6A

BW **90**
205 Day Wt. **639**
365 Day Wt. **1054**



A son of the CAA ELITE female 15G. Two sons sold to Allan Dzivinski in 2007 and one last year to Len Mueller. This young sire will moderate frame size and put a beautiful udder to your future females.

Dam: PJ's Cindy-Lee 15'97

BCC Baros 21W

Lot
★
21W

BCC 21W DOB: 19 JAN 2009

BCC HONKY TONK 21M

SIRE: BJ MR BAROS 89T

B J BLACKCAP 6N

BCC GREAT NORTHERN 45H

DAM: BCC MISS BURGESS 45L

BCC MISS BURGESS 13G

BW **92**
205 Day Wt. **635**
365 Day Wt. **1053**



Straight Canadian pedigree from an ELITE female. Maternal brothers have sold to Jay Booth and Ross Lyons with daughters selling to Jose Saravia, Mexico and recently our high selling female to Table Butte Angus.

Sire: BJ Mr. Baros 89T as a yearling

Black Angus

Lot
★
22W

BCC Prairie Storm 22W

BCC 22W DOB: 20 JAN 2009

SANDY BAR CASTLEROCK 173P

SIRE: SAR SILVER PRAIRIE 173S

SFL BLUEBIRD LASS 15F

BCC GREAT NORTHERN 45H

DAM: BCC MISS BLOSSOM 54L

PJ'S MISS BLOSSOM 79'96



Dam: BCC Miss Blossom 54L

BW **83**
205 Day Wt. **643**
365 Day Wt. **1153**

A calving ease sire with good performance. 54L is a moderate sized, strong uddered female. Three daughters have been retained and one son to Ken and Deb McLeod and one to Bar 80 Angus, Evansburg. The ELITE granddam 79F produced a \$4000 son to Steve Klein, \$3900 to Blue Jay Angus, \$4000 to Brad Tymkow, \$3500 to Gordon Hansen, and \$2100 to Mike Owchar.

Lot
★
31W

BCC Freedom 31W

BCC 31W DOB: 22 JAN 2009

TC STOUT 407

SIRE: BCC STAMINA 22T

BJ LADY WREN 3'97

RED LAMB'S CURNT VALUE MANN 4L

DAM: RED BRYLOR ELLE CHEROK 83P

RED BRYLOR CHEROK 22L



BW **90**
205 Day Wt. **671**
365 Day Wt. **1109**

Black/Red Gene Carrier. This is a deep, stout, good haired bull. The 83P dam is highly productive having also produced a feature heifer calf in our female sale in 2008 to Dinant Red Angus. Stamina 22T was the high selling bull in last year's sale to Fred & Ronalie DeBock at \$5000.



Congratulations Hailey Booth - Flatbush 4-H Club Champion Steer



Congratulations Kaitlin Boulerice - Pembina West 4-H Reserve Club Champion Steer

Black Angus



*Maternal Brother
Sold to Brad &
Christine Tymkow
\$5500*



Lot
★
32W

BCC Prairie Thunder 32W

BCC 32W DOB: 22 JAN 2009

BW	205 Day Wt.	365 Day Wt.
101	729	1290

SANDY BAR CASTLEROCK 173P
SIRE: SAR SILVER PRAIRIE 173S
SFL BLUEBIRD LASS 15F
DAM: PJ'S LINDSAY 2'97
PJ'S LINDSAY 49'95

The end of an era. Lindsay 2'97 has consistently produced at the top end of the herd, but she injured a hip last year so this will be her last offering. Maternal brothers have sold to Brian Wiese, Clyde McCoy, Brad & Christine Tymkow, and Melissa LeBlanc, with a sister also selling to Bar 80. These Silver Prairie cattle pound the scale down. This bull had a weaning index of 106 and a yearling index of 114. Long, smooth, strong topped, structurally sound. Muscle – Performance – Maternal Power.

Lot
★
36W

BCC Forefront 36W

BCC 36W DOB: 23 JAN 2009

BW	87
205 Day Wt.	609
365 Day Wt.	1213

PAPA FORTE 1921
SIRE: WOODHILL FORESIGHT
BON VIEW GAMMER 85
LANDMARK NEW FRONTIER
DAM: PJ'S LYNN 31'97
LYNN OF LARKSPUR 8W



Dam:

PJ Lynn 31'97



An ET calf from 31G, one of the breed's highest maternal females and one of the most fertile. She consistently pumps out 30 embryos per flush and her eggs have been sold world wide. We sold her to Blair's Ag Cattle Co. in 2008. Sons have sold to Jim Haughton, Bill McCarthur, Brad Tymkow, and Eldon Nicholson's Jelmar Angus at Raymore, SK. Woodhill Foresight is a high maternal carcass improver being Papa Forte's best son. This was his recipient dam's first calf. Visitors have commented on this calf's big square hip, sound structure and great front end. This calf has all the tools to bring your program to the forefront.

Black Angus



Dam:
Clover Meadow
Heather 5H



Lot
★
39W

BCC Prairie Fire 39W

BCC 39W DOB: 24 JAN 2009

BW	205 Day Wt.	365 Day Wt.
100	773	1238

SANDY BAR CASTLEROCK 173P
SIRE: SAR SILVER PRAIRIE 173S
SFL BLUEBIRD LASS 15F
BCC JAZZ 044
DAM: CLOVER MEADOW HEATHER 5H
CLOVER MEADOW HEATHER 40W

Built for power. The 5H dam has quite a record. She raised the high selling bull in 05 to Don Petryshen, then she raised BCC Special Edition 36R the many times Champion who bred so well for us. She produced a bull to Duane Farrar and a heifer to Jose Saravia, Mexico. These Silver Prairie sons are easy fleshing bulls whose calves will pound down the scales. This was the #1 weaning black bull calf with an index of 114.

Lot
★
41W

BCC Bardolier 41W

BCC 41W DOB: 25 JAN 2009

BW	83
205 Day Wt.	633
365 Day Wt.	1085

BJ BARDOLIER 24'90
SIRE: SANDY BAR BARDOLIER 2B
SANDY BAR MISS QUALITY 1M
BJ JACK DANIELS 25'92
DAM: BCC BLACK VELVET 11H
BJ BLACK VELVET 26'89



Dam:
Black Velvet
11H



Straight Canadian ET calf. 11H has produced a \$6000 son to Clover Meadow Farm, \$4000 son to Spruceview Angus, as well as a couple of good bulls to Gordon Hansen and Lorne Coche. Sandy Bar Bardolier 2B was a \$15 000 2/3 interest son of BJ Bardolier 24'90 who we sold to Sandybar Angus in the 1991 Cross Canada Sale for \$4700. We used a full sibling to 41W on our heifers last year and love the results.

Black Angus

BCC Castlerock 42W

Lot
★
42W

BCC 42W DOB: 26 JAN 2009

SANDY BAR CASTLEROCK 173P

SIRE: SAR SILVER PRAIRIE 173S

SFL BLUEBIRD LASS 15F

DOUBLE A JAZZ 44B

DAM: BJ LADY WREN 3'97

BJ LADY WREN 81'85

BW **100**
205 **752**
Day Wt.
365 **1136**
Day Wt.



Dam: BJ Lady Wren 3'97

The #2 weaning bull with an index of 110. 3G consistently weans a top calf. She has accumulated an average weaning index of 109 on 9 calves. This is a maternal brother to Stamina 22T who was our high selling bull last year at \$5000 to Fred and Ronalie DeBock. Other maternal siblings have sold to Brad & Christine Tymkow, Jubilee Farm, Ken Haughton, Larry Schultz, and an excellent son BCC Jose Quervo 33U to Calvin Wilson in Ontario for \$3700. This bull will add depth of body and production.

BCC Hardrock 45W

Lot
★
45W

BCC 45W DOB: 28 JAN 2009

SANDY BAR CASTLEROCK 173P

SIRE: SAR SILVER PRAIRIE 173S

SFL BLUEBIRD LASS 15F

BCC EILEENMERE LAD 26G

DAM: BCC LYNN 88J

PJ'S LYNN 31'97

BW **88**
205 **651**
Day Wt.
365 **1170**
Day Wt.



Dam: BCC Lynn 88J

What an opportunity to get a great son of Silver Prairie here today. We have 4 daughters of 88J retained in our herd, as well we are using a son of hers BCC Premium Edition 47U. She is an ELITE female with an average weaning index of 108 on 9 calves. This guy is moderate birth weight and will leave you a great set of daughters. Are you prepared for the future?

BCC Advantage 46W

Lot
★
46W

BCC 46W DOB: 28 JAN 2009

SANDY BAR CASTLEROCK 173P

SIRE: SAR SILVER PRAIRIE 173S

SFL BLUEBIRD LASS 15F

S A F FAME 808742

DAM: PJ'S SHIRE 10'97

PJ'S SHIRE 35'95

BW **90**
205 **647**
Day Wt.
365 **1112**
Day Wt.



Dam: PJ's Shire 10'97

When you see these Silver Prairie sons you'll soon figure out why Stacy Stauffer wanted to buy him back from us. They're one of the most consistent sire groups we've had. Honest, strong bodied, well structured beef bulls. The 10G dam has accumulated quite a record as well with sons to Ross Lyons, Gaylen Spencer, Brad Tymkow, a daughter in the package of females to Mexico two years ago, and many will remember her great son that sold to the Gateway Research Organization last year for \$4000.



BCE Stamina 48W

BCC 48W DOB: 29 JAN 2009

TC STOUT 407

SIRE: BCC STAMINA 22T

BJ LADY WREN 3'97

HYLINE RIGHT WAY 781

DAM: BCC BLACK VELVET 30S

BCC BLACK VELVET 11K

BW	87
205 Day Wt.	650
365 Day Wt.	1117



Dam: BCE Black Velvet 30S

We used last year's high selling bull on our second and third calves when he was a yearling. What a good move that was. These are moderate birth weight bulls with excellent performance. They can be used on heifers or cows with confidence. The 30S dam has always been a favorite of visitors here. She produced a son in last year's sale to the Boulerice Family. Congratulations to Kaitlyn Boulerice on having Reserve Club Champion Steer last year.



BCE Stamina 50W

BCC 50W DOB: 31 JAN 2009

TC STOUT 407

SIRE: BCC STAMINA 22T

BJ LADY WREN 3'97

HYLINE RIGHT WAY 781

DAM: BCC BLACK VELVET 7S

BCC BLACK VELVET 47H

BW	81
205 Day Wt.	702
365 Day Wt.	1232



All the right tools and more! Low birth weight with excellent performance. His dam has a weaning index of 106 on her first two calves. 7S has about the nicest udder on the farm as well. The 47H grand dam was designated as an ELITE female by the Canadian Angus Association.



BCE Stamina 56W

BCC 56W DOB: 2 FEB 2009

TC STOUT 407

SIRE: BCC STAMINA 22T

BJ LADY WREN 3'97

BCC SHOCKIN' Y'ALL 1P

DAM: BCC MISS CASSIE 36S

BJ MISS CASSIE 29'89

BW	85
205 Day Wt.	682
365 Day Wt.	1083



**Brad & Christine Tymkow Steers
November 16/2009 - 692 lbs Avg.**

Three of our top cow families in this pedigree. Lady Wren, Lynn, and Miss Cassie. 29'89 produced until she was 19 years old. A moderate, functional beef bull built to be trouble free.

Black Angus

BCC Baros 77W

Lot
★
77W

BCC 77W DOB: 13 FEB 2009

BCC HONKY TONK 21M

SIRE: BJ MR BAROS 89T

B J BLACKCAP 6N

BCC DYNASTY 30L

DAM: BCC LADY WREN 42N

BCC LADY WREN 57K

BW **88**
205 **671**
Day Wt.
365 **1189**
Day Wt.



*Maternal Brother \$5300 Sold to
Fred and Rita vandeLigt*

Straight Canadian pedigree. This is a maternal brother to the high selling bull in 07 to Fred & Rita van de Ligt at \$5300. 42N also produced a son to Eugene & Elaine Gingras and we have two daughters in our herd. Dynasty 30L was as good a bull as we've seen for putting a beautiful udder on his daughters.

Lot
★
76W

BCC KB Ernest 76W

BCC 76W DOB: 13 FEB 2009

TC STOUT 407

SIRE: BCC STAMINA 22T

BJ LADY WREN 3'97

LOMA LANES BIG DEAL 146N

DAM: BCC LYNN 108S

BCC LYNN 88J

BW **81**
205 **642**
Day Wt.
365 **1075**
Day Wt.

This is Kailey's first bull to sell. She named him herself hence the name KB Ernest! A pretty neat bull in his own right. Low BW and a stout, well muscled and smooth. Use him on your heifers with confidence and it wouldn't hurt to give him some cows too. There's a lot of maternal power behind this rascal. The Big Deal breeding has turned out to be a great calving ease line.

Lot
★
80W

BCC Stamina 80W

BCC 80W DOB: 14 FEB 2009

TC STOUT 407

SIRE: BCC STAMINA 22T

BJ LADY WREN 3'97

F A R KRUGERRAND 410H

DAM: BCC GEORGINA 12S

BCC GEORGINA 28F

BW **89**
205 **732**
Day Wt.
365 **1285**
Day Wt.

This is sure to be a crowd favorite. The combination of Stout, Lady Wren, 410H and the old Georgina cow family this guy is no accident. Generations of quality. This bull has a weaning index of 109 and a yearling index of 112. The first calf from 12S was a heifer and she sure looks good in our pen of 2 year old cows.

Lot
★
89W

BJ Mr Baros 89W

BJAF 89W DOB: 17 FEB 2009

LAMBS OVERDRIVE 45E

SIRE: BCC HONKY TONK 21M

BCC BLACK VELVET 47H

BCC JAZZ 044

DAM: BCC MISS BURGESS 14K

BCC MISS BURGESS 135

BW **94**
205 **679**
Day Wt.
365 **1319**
Day Wt.



The Honky Tonks have become renowned for their muscle and power. This bull is no exception. An ADG of 4.0 lbs/day. Just ask the guy who buys and feeds your calves if this is the kind of bulls you should buy. Jazz 044 originally sold to Clover Meadow Farm in BC for \$5000, we bought him back as a 4 year old, used him a couple years and he finished his career working for Don and Barry Rinas until he was 10 or 11.



Lot
★
81W

BCC Blackberry 81W

BCC 81W DOB: 15 FEB 2009

BW	205 Day Wt.	365 Day Wt.
84	705	1383

RED COMPASS MULBERRY 449M
SIRE: RED FINE LINE MULBERRY 26P
RED DUS FAYETTE 8G

CAMILLA BANDOLIER 85J
DAM: BCC BLACK VELVET 3N
BCC BLACK VELVET 234

Black/Red Gene Carrier. Unique is the word here. Not only is he a black son of the great Mulberry, but he is from a dam sired by the old Camilla Bandolier 85J. We have three 85J daughters in the herd. Remember an 85J daughter raised our \$14 750 Red Roundup heifer that sold to Glengary, Get A Long and Mile High. The best part is that this bulls' dam is the best of the three sisters. Note the awesome performance on this bull. Black Velvet 234 was one of the all time high producing females to grace our pastures with a weaning index of 111 on 10 calves. This bull is solid! When we weighed the bulls in Jan he surprised me so much I backed him off and weighed him again to make sure it was right. A weaning index of 104 and a yearling index of 121 with an ADG of 4.2 putting him in #1 position.

Lot
★
100W

BCC Silver Bullion 100W

BCC 100W DOB: 24 FEB 2009

BW	94
205 Day Wt.	639
365 Day Wt.	1125

SANDY BAR CASTLEROCK 173P
SIRE: SAR SILVER PRAIRIE 173S
SFL BLUEBIRD LASS 15F

G D A R CENTENNIAL 911
DAM: BCC KEEPSAKE 055
BJ KEEPSAKE 31'91



Performance and longevity bred in. The 5E dam was 14 when she raised this bull, and the Dam of Silver Prairie is still in production at 14 years of age as well. 5E has produced sons for Jubilee, Len Mueller, VanDeFive, Verbeeks, and Gerald & Jodie McCrimmon.

Dam: BCC Keepsake 055

Black Angus

BCC Stamina 107W

Lot
★
107W

BCC 107W DOB: 3 MAR 2009

TC STOUT 407

SIRE: BCC STAMINA 22T

BJ LADY WREN 3'97

BCC SHOCKIN' Y'ALL 1P

DAM: BCC BLACK VELVET 41S

BCC BLACK VELVET 22N

BW **84**
205 **639**
Day Wt.
365 **1168**
Day Wt.



Note the low birth weight on this well muscled, square hipped prospect. He is a maternal brother to the bull purchased by the Pibroch Colony for \$3600 last year. 41S is a full sister to 7T, the dam of lot 14W. This bull has a yearling index of 105. The Stamina sons all know how to perform on feed.

*Maternal Brother \$3600
Sold to Pibroch Colony*

BJ Mr Baros 109W

Lot
★
109W

BJAF 109W DOB: 4 MAR 2009

LAMBS OVERDRIVE 45E

SIRE: BCC HONKY TONK 21M

BCC BLACK VELVET 47H

DOUBLE A JAZZ 44B

DAM: BJ MISS BURGESS 7'96

BJ MISS BURGESS 4'93

BW **90**
205 **714**
Day Wt.
365 **1290**
Day Wt.



Wouldn't you like to have a whole herd of cows that look like this bull's dam? Full brothers to 109W have sold to Jay & Robin Booth and Shaun & Jacquie Nutt. It's no coincidence that both of those operations have some of the most sought after and respected calves in the business. Here's your chance to join the trio.

Dam:

*BJ Miss
Burgess 7'96*



BCC Silver Bar 114W

Lot
★
114W

BCC 114W DOB: 14 MAR 2009

SANDY BAR CASTLEROCK 173P

SIRE: SAR SILVER PRAIRIE 173S

SFL BLUEBIRD LASS 15F

BCC BLACKMAN 6H

DAM: CLOVER MEADOW PRIDE 9M

CLOVER MEADOW PRIDE 17D

BW **87**
205 **652**
Day Wt.
365 **1198**
Day Wt.

The youngest Silver Prairie son. Moderate birth weight and excellent performance. Maternal brothers have sold to Joel Ortega, Mexico and Fred & Ronalie DeBock. This bull has a yearling index of 111 with an ADG of 3.4 lb/day



Lot
★
726W

Justamere 422 Star 726W

AFA 726W DOB: 14 JAN 2009

EXAR SUDDEN IMPACT 1537

SIRE: EXARPAF 422

PAF 8571 AT 1013

ROYLE-HEAD RIGHT TIME 27E

DAM: LLB BLACKBIRD STAR 135J

LLB BLACKBIRD STAR 312C



BW	100
205 Day Wt.	710
365 Day Wt.	1220

Long, smooth and thick with a big set of nuts. Sired by the 422 bull that has left some of the best calves at Justamere year in and year out. The 135J dam is a big stout cow with a great production record. A maternal brother to 726W sold to Emerson Ranches Ltd. Royal Head Right Time has left a lot of great females at LLB. This bull will increase carcass yield and leave you a set of cows.

Lot
★
774W

Justamere 113R Duster 774W

AFA 774W DOB: 29 JAN 2009

EXAR MASTER 253

SIRE: JUSTAMERE 253 NEXT STEP 113R

JUSTAMERE 66F ROSILLA 645K

CONNEALY LEAD ON

DAM: ENNS BLACKCAP'S LEAD 36R

SAR BLACKCAP 4448



BW	85
205 Day Wt.	706
365 Day Wt.	1327

Curve bending performance. Look at that low birth weight and explosive growth. ADG of 3.9 Sired by the \$30 000 Next Step who was Reserve Champion at Agribition in 2006. The dam is a great young Lead On daughter who also produced a bull for Notts Spruce Lane Farm. Look at the depth and power of this well bred herdsire prospect.

Lot
★
794W

Justamere 235P Edgar 794W

AFA 794W DOB: 8 FEB 2009

LEACHMAN RIGHT TIME

SIRE: JUSTAMERE TIMELESS 234R

JUSTA SOURCE ANDEE 687X

PERRY POWER DESIGN 715

DAM: ENNS DESIGN OF ELEGANCE 48P

W B ELEGANCE 2352



BW	85
205 Day Wt.	669
365 Day Wt.	1220

Calving ease, carcass quality, maternal power and performance all in one neat package. Timeless was the last natural calf from the 687X female that was so influential at Justamere. Proven genetics at work here. Take the guesswork out of your calf crop.

**BCC Black Velvet 46U -
We're Prepared For The Future!**

Red Angus

Notes on Our Red Angus Program

Since 2005, after requests from local bull customers, we started a Red cowherd to compliment our Blacks. Some of our commercial customers wanted red bulls of equal quality and type to our black bulls.

We have sourced foundation females from the top herds in Western Canada. Most of our purchases have been through dispersal sales and the famed Red Roundup Sale as well as the Brylor Ranch "Tradition With A Vision" sale. Most of our females have genetics from breeding programs that have a good commercial customer base. As you read through our red pedigrees you will repeatedly find names like Brylor, Triple SSS, Wilbar, Finesline, and Towaw.

Equally daunting has been our search for herdsire power. Our first purchase was Red Brylor Affirmed 96R who was the high selling bull at Brylor's bull sale in 2006. In 2008 the opportunity was available to have possibly the greatest Red Angus bull in the world walk our pastures for a month. Yes, we had the famed Red Finesline Mulberry 26P here for the month of May. It was invigorating to look out across the pasture and watch that noble beast in full stride.

In the short time we've been in the Red Angus business, our accomplishments have been notable. In 2007 we set a Red Roundup Record selling a yearling heifer for \$14 750 to Glengary, Get A Long and Mile High. (The record was broken the same day...congratulations Dennis & Shelly) Then in 2008 we had the High Selling Red Roundup Heifer Calf at \$9 000 to Colby Lind and Eric Nelson, Spring Grove MN, USA. It was certainly exciting to have them show this heifer at the 2009 National Western Stock Show in Denver, where she placed first in the Jr. Show as well as first in her class in the Red Angus Show. 2008 also saw a package of our Red Angus females sell to "Chema" Saravia, Durango, Durango, Mexico.

In 2009 we bolstered our herdsire roster with the addition of two more top yearlings from Brylor Ranch. We have a big powerful son of Stallion 19J from MS Dividend 815J. As well we added a stout, meaty son of Bodasius 79K from Prime Ribs best daughter Goldie 17J. We are confident these bulls will position us well in the future.

We continue to laid down the foundation for the future. Look to Brandl Cattle Co. with confidence for your Red Angus requirements. Like I said in a previous article - it's not just a side show; we're serious about these red cattle.



Ref
★
Sire

Red Fine Line Mulberry 26P

NVG 26P DOB: 31 JAN 2004

BW	205 Day Wt.	365 Day Wt.
103	737	1261

RED HR RAMBO ET 91K
SIRE: RED COMPASS MULBERRY 449M
 RED BRYLOR MISS ROC 20H
 RED SILVEIRAS REDFORD
DAM: RED DUS FAYETTE 8G
 RED MC DOUGALL FAYETTE 59A

Yes, remember we had him here for the month of May in 2008. The only other place in the world where you will find a group of natural sons is at Brylor Ranch. We all knew he was the proclaimed King of The Cattle World, and he proved just that last summer at the World Angus Forum where he was named the Premium Sire based on the dominating placings of his progeny. There has not been a bull like Mulberry before that has been so dominant and prolific. His calves have density, volume, appetite, muscle shape, hair coat and his great disposition and personality.

Red Angus

Lot
★
24W

Red BCC No Mercy 24W

BCC 24W DOB: 20 JAN 2009

RED BJR HIGH CAPACITY 008

SIRE: RED UBAR SEQUOIA 202

RED FORSTER COPPRQUEEN 7168

RED SSS KA-BOOM 818G

DAM: RED FINE LINE TAMMY 62K

RED FINE LINE TAMMY 2F



BW	89
205 Day Wt.	617
365 Day Wt.	1187

When we went to the Fineline Dispersal we asked Nick which cows consistently produced his best bulls and his first recommendation was 62K. She has produced bulls for Eugene Tremblay, Les Bredeson, Ian Thomson, Les & Joyce Scobey and last year to Stanley & Bernice Chamzuk. Sequoia is becoming noted for his maternal excellence. He is the sire of the mature cow Champion at the 2009 Farmfair and Agribition.

Dam:

Fine Line

Tammy 62K



Dam:

Raven River

Goldie 47N



Lot
★
28W

Red BCC King 28W

BCC 28W DOB: 21 JAN 2009

RED COMPASS MULBERRY 449M

SIRE: RED FINE LINE MULBERRY 26P

RED DUS FAYETTE 8G

RED WILD ROSE LIGHTNING 183J

DAM: RED RAVEN RIVER GOLDIE 47N

RED WILD ROSE GOLDIE 47H

BW	205 Day Wt.	365 Day Wt.
79	672	1325

Explosive gain in a moderate frame. This guy started out little and never looked back. His dam is an absolute tank, again not the biggest framed cow we own but has the hardest time wiggling her way through a loading alley or handling system. Her son last year sold to Brownalta Angus at Hairy Hill where he did an excellent job of breeding.

Red Angus

Red BCC Monarch 33W

Lot
★
33W

BCC 33W DOB: 23 JAN 2009

RED COMPASS MULBERRY 449M

SIRE: RED FINE LINE MULBERRY 26P

RED DUS FAYETTE 8G

RED YY RED KNIGHT 640F

DAM: RED NORTHLINE HOLLY 211J

RED NORTHLINE HOLLY 111C

BW **92**
205 **680**
Day Wt.
365 **1235**
Day Wt.



Dark red, and strong topped. Between Mulberry and Red Night 640F it eliminates the guess work. Proven genetics that have been and always will be profitable. 211J's very first son brought \$8000 to Meyer Ranch, other sons have sold to Oldfield Farms, L4L Ranches, Pinhorn Grazing Assn., East Cardston Colony, and Clyde McCoy.

Red BCC Olympian 40W

Lot
★
40W

BCC 40W DOB: 25 JAN 2009

RED BJR HIGH CAPACITY 008

SIRE: RED UBAR SEQUOIA 202

RED FORSTER COPPRQUEEN 7168

RED LAMB'S CURNT VALUE MANN 4L

DAM: RED FINE LINE STORM 10R

RED FINE LINE GAL 6N

BW **92**
205 **735**
Day Wt.
365 **1327**
Day Wt.



Sire: Ubar Sequoia 202

If you like them dark red check this bull out. Besides leaving some superior females around the country Sequoia is noted for leaving some of them very dark. This is one of the longest, smoothest bulls on offer. Strong topped and full of performance he will increase the carcass yield in your calves. The 10R dam has an incredible weaning index of 116 thus far in her career. A daughter sold through Red Roundup to Brownalta Angus. This herdsire prospect has a weaning index of 108 and a yearling index of 106 with an ADG of 3.7

Red Shoderee Gallant 41W

Lot
★
41W

SKG 41W DOB: 16 FEB 2009

RED H70 QUANTOCK 597N

SIRE: RED H70 QUANTOCK 659S

RED H70 QUANTOCK 100 MS 422M

RED FLYING K CHISOLM 28K

DAM: RED SHODEREE POWDER 10N

RED RV POWER TRACK 69B

BW **80**
205 **689**
Day Wt.
365 **1112**
Day Wt.



Check out this low birth weight carcass sire. He boasts a weaning index of 106. He is sired by the high selling bull at Quantock's in 2007. Get a good nights sleep when your heifers are calving.



Lot
★
54W

Red BCC Emperor 54W

BCC 54W DOB: 1 FEB 2009

BW	205 Day Wt.	365 Day Wt.
93	737	1345

RED COMPASS MULBERRY 449M
SIRE: RED FINE LINE MULBERRY 26P
 RED DUS FAYETTE 8G
 RED BADLANDS BONUS 702
DAM: RED JSF CHEROK 15M
 RED JSF CHEROK 19J

Wow, there's some awfully good Mulberry's out there, but how do you make them any deeper, thicker, smoother and nicer fronted than this? This guy has butt, guts and nuts. A weaning index of 108, yearling 109 and an ADG of 3.8 lb/day. Emperor is dark with a great disposition and a proud herdsire attitude to him. His dam is a very feminine, long bodied production machine with a big square hip on her. 15M is also the dam of a herdsire for Russell Coward and a \$3100 heifer to Remington Cattle Co.

Lot
★
62W

Red BCC Ruler 62W

BCC 62W DOB: 5 FEB 2009

BW	81
205 Day Wt.	600
365 Day Wt.	1162

RED COMPASS MULBERRY 449M
SIRE: RED FINE LINE MULBERRY 26P
 RED DUS FAYETTE 8G
 RED RUSTY CREEK VIPER 67G
DAM: RED SNOWY RIVER FIREFLY 143L
 RED SANROSE FIREFLY 43A



Dam: Snowy River Firefly

Mulberry continues to prove that he's a calving ease and performance sire, but perhaps the best thing when everything is said and done is the maternal strength that he adds. Maternal brothers to 62W have sold to Rudolf Jahn and Colby Hansen. A sister is now at Bar 5 in Ontario.

Red Angus

BCE Mulford 67W



BCC 67W DOB: 6 FEB 2009

RED COMPASS MULBERRY 449M

SIRE: RED FINE LINE MULBERRY 26P

RED DUS FAYETTE 8G

WABASH SANDSTONE 200L

DAM: BCCH GOLDEN PRIDE 5S

L9 GOLDEN PRIDE 10J



BW	90
205 Day Wt.	620
365 Day Wt.	1097

This is Mulford (Mulberry x Hereford) When we still had a few Hereford cows here people said they wanted to add a white face but not all the other white. Here's the answer. The last couple years we've offered some hybrid Herefords with great acceptance. All the goodness of a Mulberry and put that crossbred look on your calves.



Red BCE Principal 68W

BCC 68W DOB: 9 FEB 2009

RED COMPASS MULBERRY 449M

SIRE: RED FINE LINE MULBERRY 26P

RED DUS FAYETTE 8G

RED BRYLOR GOLD 55H

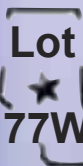
DAM: RED BRYLOR SUNSHINE 187S

RED 77 MARTA 46G



BW	81
205 Day Wt.	681
365 Day Wt.	1260

Guess what? Yet another low birth weight Mulberry with great performance. This guy is soggy, deep and good haired. Marta 46G is an ELITE female with an average weaning index of 110.



Red Shoderee Breaker 77W

SKG 77W DOB: 20 FEB 2009

RED SOUTHLAND ENERGIZER 100R

SIRE: RED BAR-E-L TIE BREAKER 14T

RED BAR-E-L ROBERTA 46R

RED HLH BUSTER 406 603

DAM: RED SHODEREE SHEILA 39M

RED SHODEREE SHEILA 5K



BW	90
205 Day Wt.	721
365 Day Wt.	1241

Dark red and full of meat and muscle. Being a son of Tie Breaker that is what you would expect. Tie Breaker is also out of a Red Knight 640F daughter so you know the maternal power is there too. The 39M dam is an ELITE female with other sons working at Neely Agro, and 4Wal Ranching.



Lot
★
75W

Red BCC Nobleman 75W

BCC 75W DOB: 12 FEB 2009

BW	205 Day Wt.	365 Day Wt.
94	778	1328

RED COMPASS MULBERRY 449M
SIRE: RED FINE LINE MULBERRY 26P
 RED DUS FAYETTE 8G
 RED BADLANDS BONUS 702
DAM: RED VIKSE PROOF 204P
 RED THORNHILL ABSOROKA 4L

The 204P cow is fast becoming one of our most treasured cows. She has produced a \$4000 heifer to Kinared in Manitoba, a \$5200 heifer to Ellie Karweik in Michigan and now she's hit a homerun in the herdsire department. This was the #1 weaning red bull with an index of 115. This is a strong topped, long quartered, smooth shouldered meat machine. It's interesting to note that two of our top red bulls are 3/4 brothers, both being Mulberry's from Badlands Bonus 702 (Fargo) daughters. What a great combination.

Lot
★
87W

BCC Maineman 87W

BCC 87W DOB: 13 FEB 2009

BW	98
205 Day Wt.	610
365 Day Wt.	1088

COWAN'S ALI 4M
SIRE: CMAC TYSON ET
 CMAC CATERINA ET
 SAF ELMO
DAM: BCC ELLIEMAY 39P
 PJ'S LINDSAY 2'97



Now for something completely different. This is a 3/4 Maine Anjou bull bred to produce that show steer look. He will put a big square rump on his calves, that tight chiseled front end and a great hair coat. Note that on the Angus genetics he traces back to the Lindsay 2'97 cow that has produced some great bulls in her time.

Red Angus

Red Shoderee Norseman 90W

Lot
★
90W

SKG 90W DOB: 23 FEB 2009

RED 5L NORSEMAN KING 2291

SIRE: RED SSS NORSEMAN 412S

RED SSS DUCHESS 606P

RED HILL SPRINGS ROBIN HOOD 6F

DAM: RED HILL SPRINGS BANE BERRY

RED BL SPR BANE BERRY 206C

BW 76
205 Day Wt. 661
365 Day Wt. 1082



Norseman 412S was the high selling bull at the 2007 SSS bull Sale. He is thick, meaty and large scrotaled. His daughters are described as full bodied, moderate and pretty. The dam of 90W has been a solid producer with one of her sons working for Dave and Rhonda Bablitz in their Rainbow Red Angus herd, another was at Prescott Ranches and four others into good commercial herds.

Red BCC Aristocrat 93W

Lot
★
93W

BCC 93W DOB: 19 FEB 2009

RED COMPASS MULBERRY 449M

SIRE: RED FINE LINE MULBERRY 26P

RED DUS FAYETTE 8G

RED BLADES DIVIDEND 84M

DAM: RED BRYLOR 4S IDA 314P

RED TOP LINE IDA 27L

BW 98
205 Day Wt. 778
365 Day Wt. 1401



Dam: Brylor 4S Ida 314P

Performance Plus! A weaning index of 114, yearling index 111 and an ADG of 3.9 lb/day. The 314P dam is a strong bodied brood cow. We sold a daughter of hers to R&S Reds in Ontario. This bull will add a little frame and he'll certainly add some pounds and some dollars to your program.

Red BCC Lord 99W

Lot
★
99W

BCC 99W DOB: 23 FEB 2009

RED COMPASS MULBERRY 449M

SIRE: RED FINE LINE MULBERRY 26P

RED DUS FAYETTE 8G

RED BLUE SPRUCE LEGACY 36D

DAM: RED WILD ROSE GOLDIE 47H

RED BLUE SPRUCE GOLDIE 192Y

BW 78
205 Day Wt. 628
365 Day Wt. 1122



Dam: Goldie 47H

A super calving ease bull from an ELITE dam. Last year we sold a two year old son of 47H to Carnwood Red Angus, Drayton Valley for \$4600. Other sons have sold to Abraham Land & Cattle for \$4500, Blaine Dunlop for \$4600 and L4L Ranches at \$3000. Note that the 28W bull in this sale is from a daughter of 47H. The Mulberry sons are all mighty sons of the King of the cattle world. Check out this bulls name – now I ask you who would you want your heifers bred to other than the Lord?



Red Shoderee Clutch 107W

SKG 107W DOB: 26 FEB 2009

RED LAZY MC SMASH 41N
SIRE: RED STEWART CLUTCH 19T
RED JEWEL MISS PATHY 62A

RED FLYING K DYNAMITE 66L
DAM: RED SHODEREE BABY 71R
RED SHODEREE BABY 49H

BW	82
205 Day Wt.	691
365 Day Wt.	1161



A son of the high selling bull at the 2008 Signature Series Bull Sale. The dam of Clutch 19T is one of the most popular cows in Canada with sons working in several purebred herds. He is a calving ease sire that produces high maternal, easy fleshing cattle that grow.



Red BCC Master 110W

BCC 110W DOB: 4 MAR 2009

RED COMPASS MULBERRY 449M
SIRE: RED FINE LINE MULBERRY 26P
RED DUS FAYETTE 8G

RED RUSTY CREEK DESIGN 17D
DAM: RED RUSTY CREEK REBELLO 77G
RED RUSTY CREEK REBELLO 29D

BW	83
205 Day Wt.	714
365 Day Wt.	1219



Yes, yet another low birth weight, high performance son of Mulberry. The dam of this bull has always been one of my favorites since we acquired her from the T-S Dispersal. She just quietly goes about doing her job year after year. Last year her son sold to Gordon & Paulie Lea. Other sons have sold to the PFRA and Dexter Christman.

Dam: Rebello 77G



Red BCC Verified 115W

BCC 115W DOB: 17 MAR 2009

RED PERKS ADVANCE 121R
SIRE: RED BRYLOR AFFIRMED 96R
RED 77 SPICY 50H

RED THAT'LL DO FUSION 26F
DAM: RED THAT'LL DO RENEE 683H
RED THAT'LL DO RENEE 57A

BW	90
205 Day Wt.	698
365 Day Wt.	1117



This is the only son in the sale by our original red herd sire Affirmed. He was the high point bull on the Alberta Farmer Express Summer Show Series in 2008. 683H has been the dam of many notable offspring. A daughter sold to Ungers U2 Angus for \$4000, a son to Ter-Ron for \$3800, a daughter to D'arcy McGahn for \$3700, and a son last year to Beau & Christy Lyons for \$3200. This calf is one of the youngest in the sale, but he's loaded with muscle, performance, and maternal power.

Dam:

Renee 683H



Red Angus

Red Shoderee Norseman 141W

Lot
★
141W

DDF 141W DOB: 1 MAR 2009

RED 5L NORSEMAN KING 2291

SIRE: RED SSS NORSEMAN 412S

RED SSS DUCHESS 606P

RED HILL SPRINGS ROBIN HOOD 6F

DAM: RED HILL SPRINGS BANE BERRY

RED BL SPR BANE BERRY 206C

BW 93
205 Day Wt. 688
365 Day Wt. 1140



Another son of the thick, meaty SSS Norseman who was the high selling bull at SSS in 2007. A maternal brother sold last year to Neely Agro. Maternal power to spare here.

Red Shoderee Clutch 154W

Lot
★
154W

SKG 154W DOB: 6 MAR 2009

RED LAZY MC SMASH 41N

SIRE: RED STEWART CLUTCH 19T

RED JEWEL MISS PATHY 62A

RED SSS STORM 87M

DAM: RED SHODEREE LADY 169R

RED SHODEREE LEADING LADY 8L

BW 76
205 Day Wt. 662
365 Day Wt. 1079

We have been really impressed with the Clutch 19T offspring. Clutch is one of the really good Smash sons in the business. Just what the Red Angus cattle are noted for calving ease and high maternal ability.

Red Shoderee Oscar 174W

Lot
★
174W

NF 174W DOB: 15 MAR 2009

RED CROWFOOT OLE'S OSCAR 2042M

SIRE: RED SHODEREE OSCAR 52S

SHODEREE PATSY 113P

RED LAZY MC BLAZE 23J

DAM: RED SHODEREE NINA 121L

RED SHODEREE NINA 59G

BW 92
205 Day Wt. 662
365 Day Wt. 1165

The Oscar 52S offspring were a highlight in the Shoderee Dispersal last fall. Oscar combined with the black Right Time bull, Blaze and Hi Ho add up to great mother cows and lots of longevity and production.

Red Shoderee Pursue 183W

Lot
★
183W

SKG 183W DOB: 18 MAR 2009

RED SSS PURSUE 99M

SIRE: RED SSS PURSUE 808T

RED SSS BLOCKANNA 666F

RED BJR MAKE MY DAY 981

DAM: RED SHODEREE SERETA 56P

RED SHODEREE SERETA 28M

BW 93
205 Day Wt. 760
365 Day Wt. 1268

Sired by the high selling bull at the 2008 SSS sale, the performance here is no accident. Pursue 808T had a weaning weight of 782 and a yearling weight of 1307 with a 36 cm scrotal measurement. Maternal, milk and performance with a lot of thickness and volume. 56P has raised 4 bulls in a row with the first three all going into top commercial herds. Look at the performance and stature of this bull, then remember that he is a couple weeks shy of his first birthday at sale time. Imagine what he'll look like in your pasture as a three year old with a bunch of big strapping calves around him – awesome.

Planes, Trains & Automobiles...and Cattle

Many of you have seen the classic comedy movie *Planes, Trains & Automobiles* starring John Candy and Steve Martin. In the movie there's a scene where the two men are travelling at night down the wrong side of a freeway. People in the other lane are frantically hollering at them "You're going the wrong way". The two remain oblivious to the comments and insist they are right while commenting "How do those people know where we are going to?" That is until the two men have a near death experience when they meet two semi trucks barreling towards them.

Seems to me this has a lot of similarities to the cattle business. Over the last 10-15 years many breeders have been anxious to jump on the numbers train. As long as a computer generates the right numbers animals are promoted as being special to the business. I have always stated that Mother Nature doesn't quite go along with the same ideas as a computer when it comes to cows. Oh, there are a lot of people out there with a lot more education than me that will say otherwise. Many of them have to say that to justify their job existence.

The following is an article that caught my attention in the June/July 2009 issue of the *Canadian Cattlemen Magazine*:

Quality Grade and Yield Grade Going The Wrong Way

USDA data reveals that during the decade from 1996 to 2006, beef carcasses declined in both quality and yield. In 1996, 62.6 percent of federally graded carcasses were Choice or Prime compared to 59.0 percent in 2006. During that same time period, carcasses became fatter and heavier resulting in an increase in the percentage of carcasses yield grading 4 or 5 from only 1.7 percent in 1996 to a whopping 11.7 percent in 2006. The quality grade decline actually began after 1986, when the percentage of carcasses grading Choice or Prime peaked at 96.9 percent. These data clearly indicate that we are depositing more fat externally while at the same time depositing less intramuscular fat (marbling) in the rib eye. (Source: USDA).

This article was written by Daniel Buskirk and Steven Rust who are animal scientists at Michigan State University. I wonder why this article was so small. If we're all about raising quality this should have been the feature story!

Even before I spent time working in an abattoir, I was interested in carcass data and which cattle were actually hanging up the top carcasses. I've always thought the numbers were not making sense. Not just carcass EPD's but also birth weight, growth, and maternal numbers as well. While I'm all in favor of useful technology, a lot of these numbers are simply a marketing tool for people that are not good enough cattlemen to be able to look at a pen of animals and find the good ones. Anyone out there ever had a cattle buyer ask for the EPD's on your steer calves yet?

Ask yourself, "Am I on that freeway insisting I'm going the right way, only waiting to be hit by a semi or am I in the right lane? The best thing is to ask the guys feeding your calves, hanging them on the rail, and getting the actual data. The good thing about raising cattle is that we all like something a little different and if we decide we've screwed up there's usually someone that has what we need to fix it. It's just like if every boy in the school all liked the same girl...it'd be a hell of a mess.

Thank You to Our 2009 Bull Buyers



Fred & Ronalie DeBock
- High Selling Bull



John, Tammie & Melissa
LeBlanc* - Volume Buyer

Fred & Ronalie DeBock (2)*
Pibroch Colony*

Len & Mary Mueller*
John & Brenda Podolski*
Colby Hansen (2)*
Harold & Joanne Stark
Roy & Ruth Forbes*
Ken Keldson*

Brad & Christine Tymkow (2)*
Gateway Research
Organization
Calvin Wilson

Doug & Cindy Kreutzer*
Paul & Lorraine Boulerice (2)*
Keith & Colette Conquergood
Karlen & Evelyn Krikke*
Henry & Marianne Punko*
Ron & Barb Kwasney (2)
Greg Pirie
Fred & Rita vandeLigt*
Ken & Deb McLeod*



High Selling Bull 2009
BCC Stamina 22T \$5000

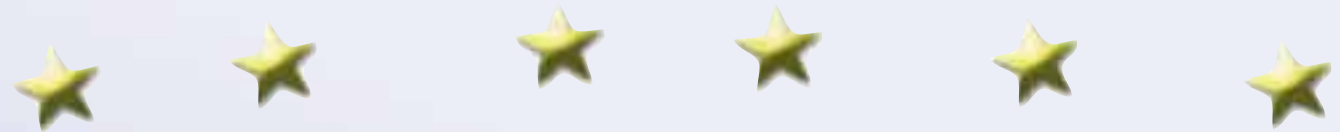
Lorne & Terryl Coche (3)*
Bob & Rose Brandl*
Dave & Sharon Brassard
Stanley & Bernice Chamzuk
Keith & Sue Anderson
Ben & Hendria Hospers*
Linford & Laurie
Breckenridge
Gordon & Paulie Lea
Lena Ricci*
Earl & Sue Allen*
Beau & Christy Lyons*
Ross & Penny Lyons*
Trevor & Christy Lebsack
Clyde McCoy*
Brownalta Farms*
Steve & Kim Klein*
Stacy & Michelle Stauffer
Gary Gill

* **Denoted Repeat Buyer**

Thank You to Our 2009 Female Buyers

Leonard Tuftnay
Dinant Red Angus*
Hazel Bluff Red Angus
Clegg Angus

Carl & Judy Bysterveld*
Trevor & Christy Lebsack*
Davis Rairdan
Table Butte Angus*
Ringstead Ranch



Northern Stars Pen Show & Sale

Returning By Popular Demand

December 2010 • Triple J Auction, Westlock

- 2010 Replacement Heifer Calf Division •
- 2009 Bred Heifer Division •

Bigger and Better – Thousands of Dollars in Prizes!
Exclusively for Brandl Bull Customers!



Terms & Conditions

CATTLE INSPECTION: All carry tags corresponding to the sale lot numbers. All bulls will be available for viewing prior to the sale.

BREEDING GUARANTEE: All bulls are sound and right and sell with a responsible breeder guarantee of satisfaction. In the event of any unlikely dispute, the regular terms and conditions, standard with the Canadian Angus Association shall apply.

TERMS OF SALE: 50% cash or cheque payable to Brandl Cattle Co. on sale day and a post dated cheque for the remaining 50% dated April 1, 2010 or pay the full amount at time of sale. No release will be given until satisfactory settlement has been made.

VOLUME DISCOUNT: 3 bulls 3%, 4 bulls 4%, 5 or more bulls 5% on total Purchases.

INSURANCE: Ownership risk to purchaser commences immediately. Livestock coverage will be available sale day.

LIABILITY: All persons attending this function do so at their own risk, and the owners and sale staff assume no liability, legal or otherwise, for property loss or for any accidents that may occur.

ANNOUNCEMENTS: Errors discovered in this catalogue will be corrected by announcements at the time of the sale and such corrections will take place over all printed material.

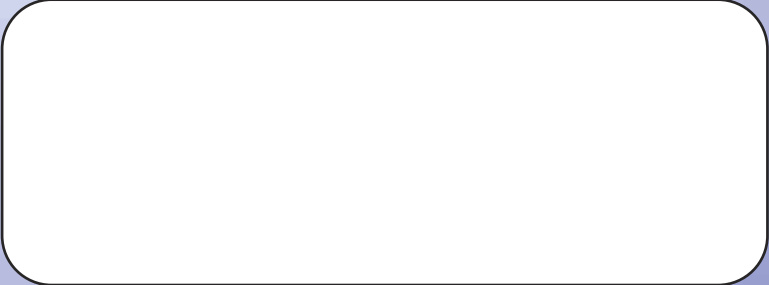
DELIVERY: All bulls will be kept free of charge until March 15. Delivery is free within 500 km of Jarvie.

Further distances at cost. Purchasers who wish to take immediate possession and haul their own bulls will receive a \$50/bull discount. These must be hauled within 3 days of the sale.

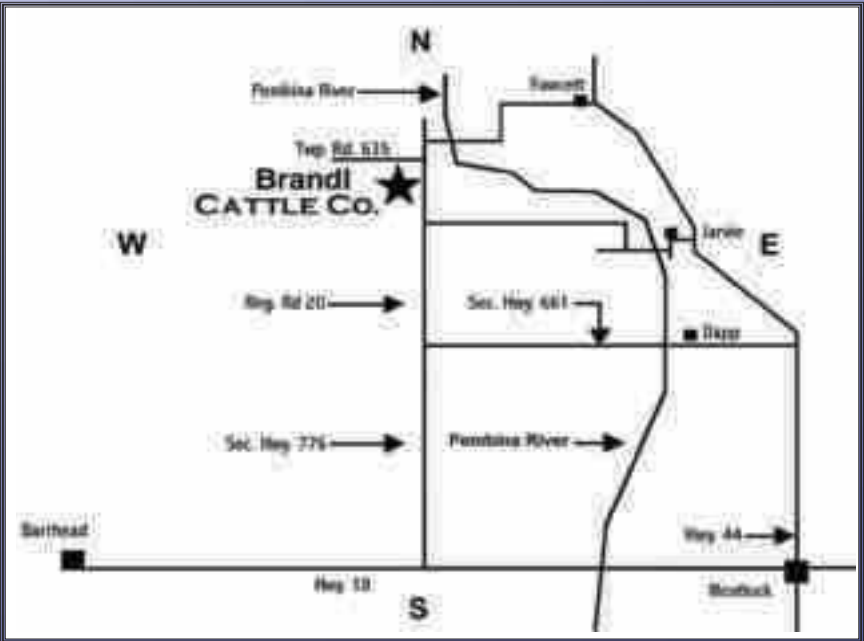
- All of the bulls selling will have satisfactorily passed a semen test by Roy Lewis, DVM - Westlock, AB prior to delivery.
- Sound cattle with good feet, legs and fertility. Cattle bred for reality, not purebred fads.
- All Brandl Cattle Co bulls selling in the 2010 sale have received 2 shots of hoofrot vaccine, this is to help keep the bulls working for you our customers
- Quality before quantity - No steers with nuts. All of our \$1500 bulls are steers!
- Uniformity - starting with a predictable cowherd, our bulls are bred similarly. Many $\frac{1}{2}$ and $\frac{3}{4}$ brothers.
- We plan on staying in the business for a long time. Satisfied customers will keep it that way.



Time Sensitive Material
PLEASE DELIVER BY FEB 24



Brandl Cattle Co.
Box 128
Jarvie, AB
T0G 1H0



See You at The

Brandl Cattle Co.

Black Angus & Red Angus Bull Sale

March 6th, 2010

Viewing at the farm 1:00 PM - Jarvie, AB

Video Sale at Dapp Hall - 4:30 PM - Dapp, AB