

BOWERMAN BROS.
NESSET LAKE ANGUS

6th Annual

**BLACK
ANGUS
BULL SALE**



FRIDAY, MARCH 18, 2011 • 1 PM (CST)

Meadow Lake Stockyards. • Meadow Lake, Saskatchewan



Reference Dam - B. B. A. R Lady Monogram 167'96

She appears in the pedigrees of Lots 9, 10, 11, 12, 13, 14, 17, 18, 19 & 31

B.B.A.R. LADY MONOGRAM 167'96

REFERENCE DAM XIT 167F 875528 FEBRUARY 20 1996

N BAR EMULATION EXT NHF AMF CAF
LEACHMAN RIGHT TIME AMF 779510
 LEACHMAN ERICA 0025

EMULATION N BAR 5522
 N BAR PRIMROSE 2424
 TEHAMA BANDO 155 NHF AMF CAF
 LEACHMAN ERICA 8058

G T MAXIMUM NHF AMF CAF
LADY MONOGRAM 67/94 874445
 F V LADY MONOGRAM 607Y

SCOTCH CAP NHF AMF CAF
 GT MISS TRAVELER 58
 RITO 2100 G D A R
 GREEN VALLEY LASS 707

BW: 96 lbs. Adj. 205D: 734 lbs. Adj. 365D: 959 lbs.

EPDs	BW	WW	YW	MILK	TM	CE	CEM
	+4.8 52%	+53 41%	+86 36%	+23 41%	+50	+0.0 37%	+3.0 30%

BBAR Lady Monogram 167'96
 is a Canadian Elite Cow.

Many of her daughters and granddaughters
 are also Elite Cows with the Canadian
 Angus Association, including two in
 the Diamond B Ranches herd,
 which dispersed, December 2010.

To view the sale online:

Go to www.mlstockyards.com

For online bidding registration contact: Brent Brooks at 306-240-5340

6th Annual

BLACK ANGUS BULL SALE

Friday, March 18, 2011, 1 PM (CST)

Meadow Lake Stockyards, Meadow Lake, SK
Hwy. 55 East (east side of town, north side of Hwy. 55)

SALE DAY PHONE: 306-236-3411

Featuring 87 Black Angus Bulls

43 TWO-YEAR-OLD BULLS • 44 YEARLINGS

Plus 16 Black Angus Females

1 COW • 1 TWO-YEAR-OLD • 8 YEARLINGS • 6 COMMERCIAL ANGUS HEIFERS

Please Join Us For Complimentary Lunch On Sale Day

CATTLE WILL
BE ON DISPLAY
AT MEADOW LAKE
FROM NOON
THURSDAY, MARCH 17
FOR VIEWING

- Free Delivery on bulls up to 300 miles and the rest at the cost of fuel.
- All bulls will be kept until May 1, 2010 at no cost to the buyer.
- Bulls must be insured for death loss.
- \$50 discount on two-year-old bulls if picked up on Sale Day.
- Sale weights and scrotal measurements available Sale Day.
- Practical, Predictable and Profitable - Conception to Consumer

SALE CONDUCTED BY: Meadow Lake Stockyards

Auctioneer: Steve Dorran - 403-226-2985

Market Operator & Buyers Representative:

Brent Brooks 306-240-5340 Harvey Trach 780-645-5172

John Setrakov 306-837-4800

SALE HEADQUARTERS

Super 8 Motel 306-236-1188

Woodland Inn 306-236-5939

Nor-Wester Motor Inn 306-236-4424

Four Seasons 306-236-4493

BOWERMAN BROS.

Harvey Bowerman

306-236-5395 Cell: 306-240-7180

Leonard Bowerman

306-236-5086 Cell: 306-240-8191

Box 358, Meadow Lake, SK S9X 1Y3

MARKETING AGENT:

**Douglas J. Henderson
& Associates Ltd.**

P.O. Box 5900, Lacombe, Alberta T4L 1X4

Doug & Linda Henderson

Phone: (403) 782-3888 Fax: (403) 782-3849

Cell: (403) 350-8541

email: djhenderson@platinum.ca www.hendersoncattle.com

NESSET LAKE ANGUS

Ivan & Julie Demmans

& Family

306-236-6058

Cell: 306-236-8086

Box 225, Meadow Lake, SK S9X 1Y2

BLACK ANGUS BULL SALE



The #1 way to get more dollars from your cow herd is to put more live calves on the ground, make them all the same and make them Black

BOWERMAN BROS. ANGUS RANCH

Box 358, Meadow Lake, SK S9X 1Y3
Harvey Bowerman Ph: 306-236-5395 Cell: 306-240-7180 Fax: 306-236-1782
Leonard Bowerman Ph: 306-236-5086 Cell: 306-240-8191

Dear Friends,

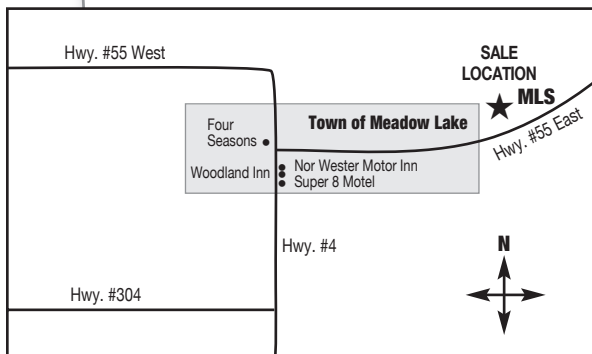
Welcome to our 15th Annual Bull Sale, our goals remain the same as always. The seedstock we offer in this sale are the result of generations of intense selection, not only for low birth, but balanced performance, in an efficient uniform maternal oriented package. Also we strive for phenotypically and structurally sound cattle with perfect feet and perfect udders. These cattle easily convert forage into beef while effectively making you the primary producer more net dollars with a consistent, uniform calf crop that performs very well - conception to consumer.

These bulls are raised on only their mothers and mother nature, they were weaned mid December, back-grounded on high forage ration then grazed on grass from late April until mid November. The average gain on grass was 515 lbs. per bull over 190 days, 2.71 lbs. per day average.

Looking to a bright future.

Sincerely,
The Bowerman Family

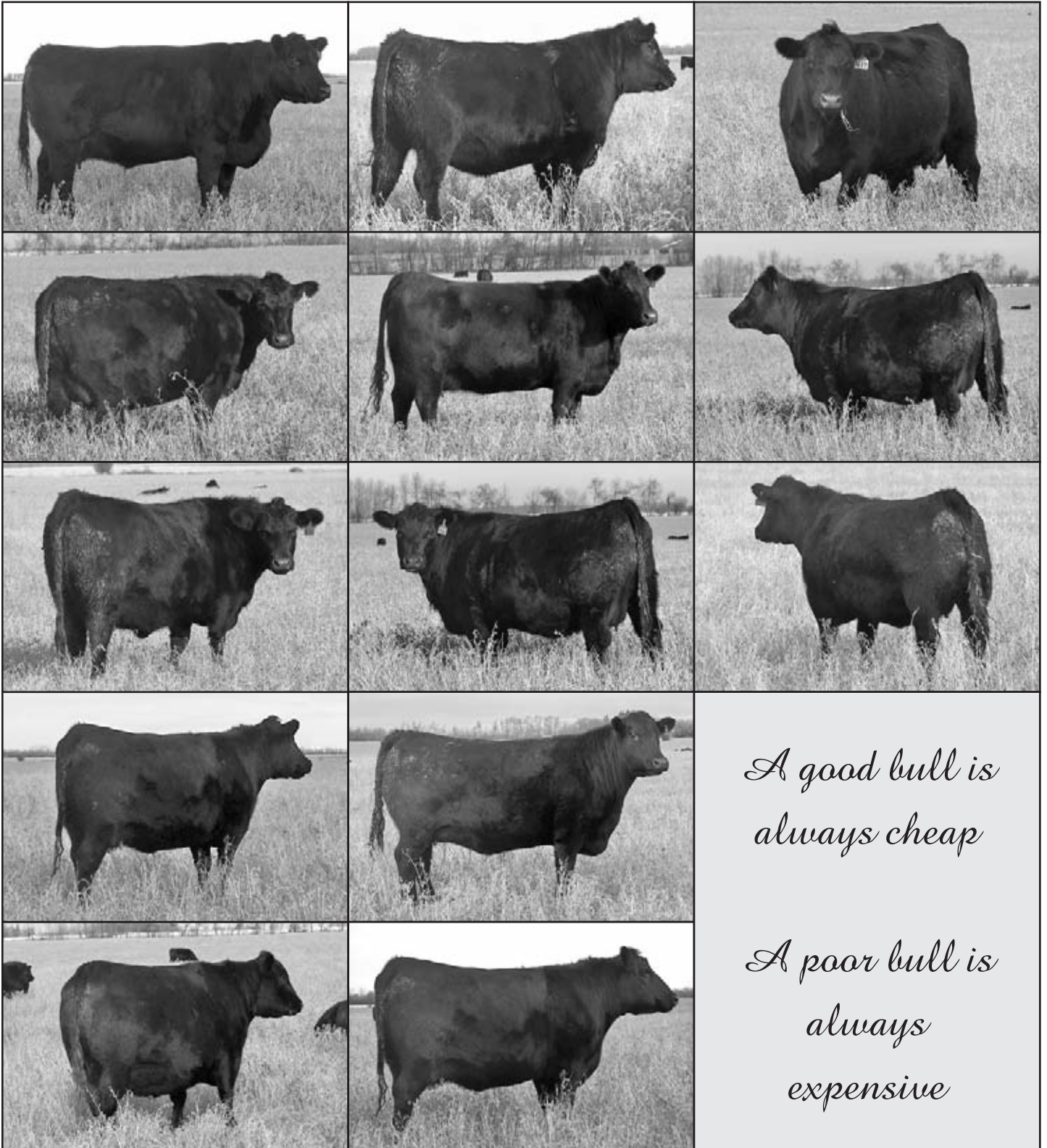
P.S. Roast Beef lunch will be on at 12:00



BOWERMAN BROS.

BLACK ANGUS BULL SALE

Snapshots of Bowerman's Legacy Daughters



BOWERMAN BROS.

REFERENCE SIREs



Johnston Nugget 370E

A

JOHNSTON NUGGET 370E

MALE DJ 370E 831706 FEBRUARY 11 1995

G D A R NUGGET 670
NUGGET 801X OF J R S 802983
 AHLGRENS ESTELLA 2758 E T E

RITO 2100 G D A R
 LT PRIMROSE LADY 232 G D A R
 IBERIAN MASSIVE OF LOVEMERE
 AHLGRENS ESTELLA 2273

EMULATION 31
N BAR KINCHTRY BEAUTY 7393 657939
 N BAR KINCHTRY BEAUTY 1467

F C R ELATION LAD 652
 MISS EMULOUS 243
 BIG ELBAN 134 OF BURDUC
 KINCHTRY BEAUTY N BAR 751

BW: 89 lbs. Adj. 205D: 800 lbs. Adj. 365D: 1320 lbs.

EPDs	BW	WW	YW	MILK	TM	CE	CEM
	+0.1 78%	+38 70%	+58 62%	-3 62%	+16	+10.0 52%	+11.0 45%

Nugget has been an outstanding sire of superior females and herd bulls. His sons are making their mark in great herds such as GBT Angus, Rinas Stock Farms, Crowfoot Cattle Co., Phil Campbell Ranch, Hill Fire Angus as well as some of the most progressive commercial herds in Western Canada.

Nugget bred natural service for 10 years. He is now deceased.



O C C Legacy 839L

B

O C C LEGACY 839L

MALE IMP 839L 1193688 SEPTEMBER 9 2001

D H D TRAVELER 6807
O C C ECHELON 857E 1079153
 DIXIE ERICA OF C H 1019

Q A S TRAVELER 23-4
 BEMINDFUL MAID D H D 0807
 PBC 707 1M F0203
 DIXIE ERICA OF C H 615

O C C ANCHOR 771A
O C C DIXIE ERICA 960E 12615369
 DIXIE ERICA OF R R 4345

D H D TRAVELER 6807
 O C C JUANADA 709V
 SHOSHONE VANTAGE JB23
 DIXIE ERICA OF R R 9275

EPDs	BW	WW	YW	MILK	TM	CE	CEM
	+1.4 85%	+36 82%	+68 78%	+16 67%	+34	+6.0 65%	+1.0 56%

Co-owned with Hill Fire Angus, Crowfoot Cattle and Ohlde Cattle Co.

One of the greatest sons of O C C Echelon 857E, out of the sensational O C C Dixie Erica 960E cow who is also the dam of O C C Hunter. Legacy was imported from the Ohlde herd in Kansas and has bred over seventy cows per year and gained weight doing it at Bowermans and Vee Tee.

Limited Semen Packages Available



Sitz Alliance 83K

C

SITZ ALLIANCE 83K

MALE IMP 83K 1107822 FEBRUARY 13 2000

SITZ TRAVELER 8180
SITZ ALLIANCE 6595 1036949
 SITZ BARBARAMERE JET 2698

G D A R TRAVELER 71
 SITZ EVERELDA ENTENSE 1137
 3 BAR SPIKE 1766
 SITZ BARBARAMERE JET 155

RITO 054 G D A R
SITZ RACHEL 2156 12528141
 SITZ RACHEL 312

C S U RITO 4114
 BLACKCAP FOREVER 485 G D A R
 D H D TRAVELER 6807
 SITZ RACHEL 2180

EPDs	BW	WW	YW	MILK	TM	CE	CEM
	+3.2 74%	+41 63%	+66 58%	+35 47%	+56	+4.0 46%	+8.0 35%

Co-owned with Hill Fire Angus
 Purchased as a two year old in 2002 Sitz Bull Sale. He was the deepest, thickest bull of over 400 bulls. 83K has left an outstanding set of females on both ranches.

BOWERMAN BROS.

REFERENCE SIREs

D

O C C MUSCLE MAN 710M

MALE IMP 710M 1189149 MARCH 16 2002

O C C BACKSTOP 888B
O C C EUREKA 865E 12514352
BLACKBIRD OF R R 1204

O C C BOULDER 855B
O C C IDEAL BLACKBIRD 701F 12708078
EE 6286 OF IDEAL 4109-1254

D H D TRAVELER 6807
REVOLUTION ROSE OF R R 9239
PBC 707 1M F0203
BLACKBIRD OF R R 7023

PBC 707 1M F0203
ROLLIN ROCK BLACKBIRD 1304
EE 30 1254 OF IDEAL 5254 960
ELDORADO 4109 IDEAL 2314 156

EPDs	BW	WW	YW	MILK	TM	CE	CEM
	+0.1 74%	+16 62%	+35 53%	+2 37%	+10	+10.0 54%	-3.0 29%

Calving ease, muscle and fleshing ability. Daughters in production will be some of the most efficient cows there are. 1st calvers are weaning calves close to 70% of their own weight. Now deceased.



O C C Muscle Man 710M

E

B.B.A.R LEGACY 767

REFERENCE XIT 67T 1402955 FEBRUARY 18 2007

O C C ECHELON 857E
O C C LEGACY 839L 1193688
O C C DIXIE ERICA 960E

LEACHMAN RIGHT TIME AMF
B.B.A.R. LADY MONOGRAM 167'96 875528
LADY MONOGAM 67/94

D H D TRAVELER 6807 NHF AMF
DIXIE ERICA OF C H 1019
O C C ANCHOR 771A CAF
DIXIE ERICA OF R R 4345

N BAR EMULATION EXT NHF AMF CAF
LEACHMAN ERICA 0025
G T MAXIMUM NHF AMF CAF
F V LADY MONOGRAM 607Y

BW: 89 lbs. Adj. 205D: 930 lbs. Adj. 365D: 1505 lbs.

EPDs	BW	WW	YW	MILK	TM	CE	CEM
	+0.3 52%	+38 40%	+68 24%	+21 22%	+40	+6.0 32%	+6.0 18%

Co-owned with Jeanott Farms, Whitewood, SK



B.B.A.R. Legacy 767

F

B.B.A.R LEGACY 616

REFERENCE XIT 16S 1337761 MARCH 12 2006

O C C ECHELON 857E
O C C LEGACY 839L 1193688
O C C DIXIE ERICA 960E

JOHNSTON NUGGET 370E
B.B.A.R. RUBY MAJORETTE 116G 909269
RUBY MAJORETTE 16'93

D H D TRAVELER 6807 NHF AMF
DIXIE ERICA OF C H 1019
O C C ANCHOR 771A CAF
DIXIE ERICA OF R R 4345

NUGGET 801X OF J R S NHF AMF CAF
N BAR KINCHTRY BEAUTY 7393
G T MAXIMUM NHF AMF CAF
RUBY MAJORETTE MO 16'84

BW: 88 lbs. Adj. 205D: 743 lbs. Adj. 365D: 1149 lbs.

EPDs	BW	WW	YW	MILK	TM	CE	CEM
	+0.8 50%	+34 37%	+57 25%	+13 21%	+30	+7.0 32%	+3.0 16%

Co-owned with Bill Hamblin, Vermilion, AB



B.B.A.R Legacy 616

B O W E R M A N B R O S .

REFERENCE SIREs



B.B.A.R. Eureka 459

G

B.B.A.R. EUREKA 459

REFERENCE XIT 59P 1227479 MARCH 26 2004

O C C EUREKA 865E
O C C MUSCLE MAN 710M 1189149
O C C IDEAL BLACKBIRD 701F

O C C BACKSTOP 888B
BLACKBIRD OF R R 1204
O C C BOULDER 855B
EE 6286 OF IDEAL 4109-1254

JOHNSTON NUGGET 370E
B.B.A.R. MISS MORRISON 59H 948770
MISS MORRISON 18/94

NUGGET 801X OF J R S NHF AMF CAF
N BAR KINCHTRY BEAUTY 7393
G T MAXIMUM NHF AMF CAF
MISS MORRISON MO 18'81

BW: 82 lbs. Adj. 205D: 647 lbs. Adj. 365D: 1179 lbs.

EPDs	BW	WW	YW	MILK	TM	CE	CEM
	+0.6 65%	+26 51%	+50 25%	+1 16%	+14	+8.0 36%	+3.0 12%

Co-owned with Cactus Ranching, Redcliff, AB

459 is a tremendous breeding bull, excellent feet and legs, unmatched width, depth and fleshing ability. Mature weight, 2360 lbs on straight forage.



B.B.A.R. Legacy 4234

H

B.B.A.R. LEGACY 4234

REFERENCE XIT 234P 1227514 FEBRUARY 22 2004

O C C ECHELON 857E
O C C LEGACY 839L 1193688
O C C DIXIE ERICA 960E

D H D TRAVELER 6807 NHF AMF
DIXIE ERICA OF C H 1019
O C C ANCHOR 771A CAF
DIXIE ERICA OF R R 4345

HERO 6267 OF R R 2418
B.B.A.R. RUBY BELLE 1934 1073638
B.B.A.R. RUBY BELLE 34'99

RR HERO 6267
R R EVERELDA ENTENSE 0413
B.B.A.R. ROYCE 24G
B.B.A.R. RUBY BELLE 34G

BW: 83 lbs. Adj. 205D: 791 lbs. Adj. 365D: 1371 lbs.

EPDs	BW	WW	YW	MILK	TM	CE	CEM
	+0.9 52%	+37 39%	+65 35%	+20 26%	+39	+8.0 36%	+3.0 20%

EPDs:

- Expected Progeny Differences are values that predict how the future progeny of an animal will perform relative to the progeny of other animals in the same breed.
- Are expressed in the units measured of that particular trait. For example, weaning weight is measured in pounds thus the weaning weight EPD is also expressed in pounds.
- Allow a fair comparison of breeding value by removing environmental bias such as climate, feed and special management.
- Are the best tool available to compare animals between herds, countries and year of birth.

Average Black EPDs for all calves born in 2010

EPDs	BW	WW	YW	MILK	TM	CE	CEM
	+2.9	+41	+72	+17	+37	+1.3	+4.3

I

STEVENSON GARTH W24S

REFERENCE IMP 24S 1537617 MARCH 24 2006

BALDRIDGE NOTCH A C
GARTH G256 NHF CAF 14141818
G A R EXT 614 AMF

BON VIEW BANDO 598 AMF CAC
S V F BLACKBIRD 1620
N BAR EMULATION EXT NHF AMF CAF
G A R SCOTCH CAP 309

BASIN EMULATION 5653 NHF AMF CAF
WILSAR SASSY 16D 12173880
WILSAR SASSY 505B

N BAR EMULATION 8520
BASIN ENCHANTRESS 1051
BASIN RAINMAKER D S 380U
WILSAR SASSY 3U

EPDs	BW	WW	YW	MILK	TM	CE	CEM
	+1.0 52%	+47 39%	+81 36%	+16 20%	+40	+6.0 32%	+5.0 16%

BLACK ANGUS BULL SALE



Lot 1



Dam of Lot 1 with 2011 bull calf at side



Lot 1

1

B.B.A.R LEGACY 9134

MALE XIT 134W 1540476 APRIL 23 2009

O C C ECHELON 857E
O C C LEGACY 839L 1193688
O C C DIXIE ERICA 960E

D H D TRAVELER 6807 NHF AMF
DIXIE ERICA OF C H 1019
O C C ANCHOR 771A CAF
DIXIE ERICA OF R R 4345

HERO 6267 OF R R 2418
B.B.A.R RUBY BELLE 1934 1073638
B.B.A.R. RUBY BELLE 34'99

RR HERO 6267
R R EVERELDA ENTENSE 0413
B.B.A.R. ROYCE 24G
B.B.A.R. RUBY BELLE 34G

BW: 84 lbs. Adj. 205D: 887 lbs.

EPDs	BW	WW	YW	MILK	TM	CE	CEM
	+1.1 36%	+39 27%	+68 21%	+22 20%	+42	+7.0 28%	+2.0 17%

SELLING 2/3 INTEREST FULL POSSESSION.
RETAINING A 1/3 INTEREST



Lot 2



Lot 2

2

B.B.A.R LEGACY 9165

MALE LAE 165W 1540521 APRIL 17 2009

O C C ECHELON 857E
O C C LEGACY 839L 1193688
O C C DIXIE ERICA 960E

D H D TRAVELER 6807 NHF AMF
DIXIE ERICA OF C H 1019
O C C ANCHOR 771A CAF
DIXIE ERICA OF R R 4345

O C C MUSCLE MAN 710M
B.B.A.R BLACKCAP 665 1337835
B.B.A.R BLACKCAP 1165

O C C EUREKA 865E
O C C IDEAL BLACKBIRD 701F
JOHNSTON NUGGET 370E
VALLEYHILLS BLACKCAP 165D

BW: 84 lbs. Adj. 205D: 836 lbs.

EPDs	BW	WW	YW	MILK	TM	CE	CEM
	+1.6 35%	+34 25%	+65 19%	+9 17%	+26	+5.0 26%	+0.0 14%

BOWERMAN BROS.

BLACK ANGUS BULL SALE



Lot 3



B.B.A.R. Miss Morrison 7133 - Dam of Lot 3

3

B.B.A.R CHALLENGER 9133

MALE XIT 133W 1540502 APRIL 16 2009

O C C EUREKA 865E
O C C MUSCLE MAN 710M 1189149
O C C IDEAL BLACKBIRD 701F

O C C BACKSTOP 888B
BLACKBIRD OF R R 1204
O C C BOULDER 855B
EE 6286 OF IDEAL 4109-1254

O C C LEGACY 839L
B.B.A.R MISS MORRISON 7133 1402977
B.B.A.R. MISS MORRISON 133'99

O C C ECHELON 857E
O C C DIXIE ERICA 960E
N BAR EXPLOSION
B.B.A.R. MISS MORRISON 33G

BW: 72 lbs. Adj. 205D: 953 lbs.

EPDs	BW	WW	YW	MILK	TM	CE	CEM
	-0.3 34%	+37 24%	+63 17%	+12 14%	+31	+9.0 26%	+2.0 11%

SELLING 2/3 INTEREST FULL POSSESSION.
RETAINING A 1/3 INTEREST



Lot 4



Flush sisters to Lot 4

4

B.B.A.R EMBLAZON 9460

MALE XIT 460W 1544084 ET APRIL 07 2009

D H D TRAVELER 6807 NHF AMF
O C C EMBLAZON 854E NHF AMF CAF 1541351
DIXIE ERICA OF C H 1019

Q A S TRAVELER 23-4 NHF AMF CAF
BEMINDFUL MAID D H D 0807
PBC 707 1M F0203
DIXIE ERICA OF C H 615

STEVENSON ROLLING THUNDER NHF CAF
STEVENSON LADY 8760 1537622
STEVENSON LADY 305H

G D A R RAINMAKER 340
AHLGRENS ESTELLA 2758 E T E
MGR 604G OF PARTNER
STEVENSON LADY 753E

BW: 87 lbs. Adj. 205D: 834 lbs.

EPDs	BW	WW	YW	MILK	TM	CE	CEM
	+0.3 P	+43 P	+74 P	+19 P			

SELLING 2/3 INTEREST FULL POSSESSION.
RETAINING A 1/3 INTEREST

BOWERMAN BROS.

BLACK ANGUS BULL SALE

5

HILLFIRE EMB. 903W

MALE JAS 903W 1590009 ET APRIL 28 2009

D H D TRAVELER 6807 NHF AMF
O C C EMBLAZON 854E NHF AMF CAF 1541351
 DIXIE ERICA OF C H 1019

Q A S TRAVELER 23-4 NHF AMF CAF
 BEMINDFUL MAID D H D 0807
 PBC 707 1M F0203
 DIXIE ERICA OF C H 615

STEVENSON ROLLING THUNDER NHF CAF
STEVENSON LADY 8760 1537622
 STEVENSON LADY 305H

G D A R RAINMAKER 340
 AHLGRENS ESTELLA 2758 E T E
 MGR 604G OF PARTNER
 STEVENSON LADY 753E

BW: 89 lbs.

EPDs	BW	WW	YW	MILK	TM	CE	CEM
	+0.3 P	+43 P	+74 P	+19 P	+40	+10.0 P	+5.5 P



Lot 5

6

HILLFIRE PROTO 905W

MALE JAS 905W 1590045 ET MAY 01 2009

O C C KANGA 886K
O C C PROTOTYPE 847P 1541352
 O C C DIXIE ERICA 867K

O C C EMBLAZON 854E NHF AMF CAF
 O C C DIXIE ERICA 963H
 PAPA FORTE 1921
 O C C DIXIE ERICA 747F

STEVENSON ROLLING THUNDER NHF CAF
STEVENSON LADY 8760 1537622
 STEVENSON LADY 305H

G D A R RAINMAKER 340
 AHLGRENS ESTELLA 2758 E T E
 MGR 604G OF PARTNER
 STEVENSON LADY 753E

BW: 88 lbs.

EPDs	BW	WW	YW	MILK	TM	CE	CEM
	-0.4 P	+41 P	+72 P	+18 P	+38	+10.0 P	+7.5 P



Lot 6

7

HILL FIRE STAR 960W

MALE JAS 960W 1590044 ET APRIL 01 2009

N BAR PRIME TIME D806 NHF AMF CAF
GARDENS PRIME STAR NHF AMF CAF 1436724
 GREEN GARDEN JILT C242 S1 NHF

GARDENS PRIME TIME NHF AMF CAF
 N BAR MISS EMULOUS A404
 S S TRAVELER 6807 T510 NHF AMF CAF
 GREEN GARDEN JILT 9242 S1 AMF

STEVENSON ROLLING THUNDER NHF CAF
STEVENSON LADY 8760 1537622
 STEVENSON LADY 305H

G D A R RAINMAKER 340
 AHLGRENS ESTELLA 2758 E T E
 MGR 604G OF PARTNER
 STEVENSON LADY 753E

BW: N/A

EPDs	BW	WW	YW	MILK	TM	CE	CEM
	+1.0 P	+38 P	+77 P	+22 P	+41	+10.0 P	+9.0 P

SELLING 2/3 INTEREST FULL POSSESSION.
 RETAINING A 1/3 INTEREST



Lot 7

BOWERMAN BROS.

BLACK ANGUS BULL SALE



Lot 11

10

B.B.A.R 767 9118

MALE XIT 118W 1540472 MAY 01 2009

O C C LEGACY 839L
B.B.A.R LEGACY 767 1402955
 B.B.A.R. LADY MONOGRAM 167'96

O C C ECHELON 857E
 O C C DIXIE ERICA 960E
 LEACHMAN RIGHT TIME AMF
 LADY MONOGAM 67/94

JOHNSTON NUGGET 370E
B.B.A.R. MISS MORRISON 18'99 989819
 MISS MORRISON 18/94

NUGGET 801X OF J R S NHF AMF CAF
 N BAR KINOCOTRY BEAUTY 7393
 G T MAXIMUM NHF AMF CAF
 MISS MORRISON MO 18'81

BW: 87 lbs. Adj. 205D: 848 lbs.

EPDs	BW	WW	YW	MILK	TM	CE	CEM
	+2.6 33%	+42 22%	+71 12%	+11 12%	+32	+4.0 22%	+4.0 9%

11

B.B.A.R 767-941

MALE XIT 41W 1540493 JUNE 28 2009

O C C LEGACY 839L
B.B.A.R LEGACY 767 1402955
 B.B.A.R. LADY MONOGRAM 167'96

O C C ECHELON 857E
 O C C DIXIE ERICA 960E
 LEACHMAN RIGHT TIME AMF
 LADY MONOGAM 67/94

O C C MAGNUM 749M
CROWFOOT ROSE OF L 5441R 1294221
 GLADWALL ROSE OF L 890

O C C EUREKA 865E
 O C C JUANADA 818E
 N BAR EMULATION EXT NHF AMF CAF
 GLADWALL ROSE OF L 347

BW: 87 lbs.

EPDs	BW	WW	YW	MILK	TM	CE	CEM
	+3.1 P	+48 P	+74 P	+17 P	+40	+4.0 P	+2.5 P

8

PCRL NUGGET 5W

MALE PCRL 5W 1490833 MARCH 04 2009

JOHNSTON NUGGET 370E
B.B.A.R. NUGGET 2022 1113984
 LADY FANNY 22/94

NUGGET 801X OF J R S NHF AMF CAF
 N BAR KINOCOTRY BEAUTY 7393
 F V MAXIMUM 465A
 LADY FANNY MO 22'81

B.B.A.R. NUGGET 122H
SCA LADY ANN 58M 1134518
 SCA LADY ANN 56G

JOHNSTON NUGGET 370E
 B.B.A.R. RUBY BARONETTE 5'96
 LEACHMAN RIGHT TIME AMF
 SCA LADY ANN 12X

BW: 79 lbs.

9

B.B.A.R 767-965

MALE LAE 65W 1540514 MAY 08 2009

O C C LEGACY 839L
B.B.A.R LEGACY 767 1402955
 B.B.A.R. LADY MONOGRAM 167'96

O C C ECHELON 857E
 O C C DIXIE ERICA 960E
 LEACHMAN RIGHT TIME AMF
 LADY MONOGAM 67/94

B.B.A.R. ROYCE 24G
B.B.A.R. BLACKCAP 3165 1158030
 B.B.A.R. BLACKCAP 1165

STEVENSON ROYCE 741C NHF CAF
 RUBY MAJORETTE 24/94
 JOHNSTON NUGGET 370E
 VALLEYHILLS BLACKCAP 165D

BW: 86 lbs. Adj. 205D: 825 lbs.

EPDs	BW	WW	YW	MILK	TM	CE	CEM
	+2.8 33%	+38 21%	+73 12%	+15 11%	+34	+3.0 21%	+3.0 8%

12

B.B.A.R 767-953

MALE XIT 53W 1540488 MAY 05 2009

O C C LEGACY 839L
B.B.A.R LEGACY 767 1402955
 B.B.A.R. LADY MONOGRAM 167'96

O C C ECHELON 857E
 O C C DIXIE ERICA 960E
 LEACHMAN RIGHT TIME AMF
 LADY MONOGAM 67/94

O C C ECHELON 857E
CROWFOOT HEATHER 4053P 1267506
 CROWFOOT HEATHER 2107M

D H D TRAVELER 6807 NHF AMF
 DIXIE ERICA OF C H 1019
 SITZ ALLIANCE 6595 NHF AMF
 STEVENSON HEATHER 499G

BW: 83 lbs. Adj. 205D: 720 lbs.

EPDs	BW	WW	YW	MILK	TM	CE	CEM
	+1.5 33%	+33 21%	+67 11%	+16 11%	+33	+7.0 22%	+5.0 9%

B O W E R M A N B R O S .

BLACK ANGUS BULL SALE



13

B.B.A.R 767-9166

MALE LAE 166W 1540512 MAY 28 2009

O C C LEGACY 839L
B.B.A.R. LEGACY 767 1402955
 B.B.A.R. LADY MONOGRAM 167'96

O C C ECHELON 857E
 O C C DIXIE ERICA 960E
 LEACHMAN RIGHT TIME AMF
 LADY MONOGRAM 67/94

JOHNSTON NUGGET 370E
B.B.A.R. ENCHANTRESS 2166 1113962
 B.B.A.R. BLACKCAP ELVA 66'96

NUGGET 801X OF J R S NHF AMF CAF
 N BAR KINOCHTRY BEAUTY 7393
 JOHNSTON MAXIMUM 361A
 VALLEYHILLS BLACKCAP ELVA 66B

BW: 80 lbs. Adj. 205D: 817 lbs.

EPDs	BW	WW	YW	MILK	TM	CE	CEM
	+0.6 33%	+39 22%	+64 13%	+11 12%	+31	+8.0 22%	+8.0 9%

14

B.B.A.R 767-9266

MALE LAE 266W 1540516 JUNE 11 2009

O C C LEGACY 839L
B.B.A.R. LEGACY 767 1402955
 B.B.A.R. LADY MONOGRAM 167'96

O C C ECHELON 857E
 O C C DIXIE ERICA 960E
 LEACHMAN RIGHT TIME AMF
 LADY MONOGRAM 67/94

SITZ ALLIANCE 83K
B.B.A.R. BLACKCAP ELVA 466 1227521
 B.B.A.R. BLACKCAP ELVA 66'96

SITZ ALLIANCE 6595 NHF AMF
 SITZ RACHEL 2156
 JOHNSTON MAXIMUM 361A
 VALLEYHILLS BLACKCAP ELVA 66B

BW: 86 lbs. Adj. 205D: 933 lbs.

EPDs	BW	WW	YW	MILK	TM	CE	CEM
	+2.1 33%	+48 21%	+78 11%	+22 11%	+46	+5.0 21%	+5.0 8%

15

B.B.A.R EUREKA 9466

MALE LAE 466W 1540518 MAY 04 2009

O C C MUSCLE MAN 710M
B.B.A.R. EUREKA 459 1227479
 B.B.A.R. MISS MORRISON 59H

O C C EUREKA 865E
 O C C IDEAL BLACKBIRD 701F
 JOHNSTON NUGGET 370E
 MISS MORRISON 18/94

O C C GLORY 950G
B.B.A.R. BLACKCAP ELVA 5166 1282704
 B.B.A.R. BLACKCAP ELVA 066K

O C C EXODUS 712E
 O C C DIXIE ERICA 971E
 B.B.A.R. ROYCE 24G
 VALLEYHILLS BLACKCAP ELVA 66B

BW: 78 lbs. Adj. 205D: 814 lbs.

EPDs	BW	WW	YW	MILK	TM	CE	CEM
	+0.5 34%	+28 23%	+58 12%	+8 10%	+22	+9.0 22%	+5.0 8%

16

B.B.A.R EUREKA 9616

MALE XIT 616W 1540497 APRIL 29 2009

O C C MUSCLE MAN 710M
B.B.A.R. EUREKA 459 1227479
 B.B.A.R. MISS MORRISON 59H

O C C EUREKA 865E
 O C C IDEAL BLACKBIRD 701F
 JOHNSTON NUGGET 370E
 MISS MORRISON 18/94

B.B.A.R. LEGACY 4234
B.B.A.R. RUBY MAJORETTE 6416 1337823
 B.B.A.R. RUBY MAJORETTE 4116

O C C LEGACY 839L
 B.B.A.R. RUBY BELLE 1934
 O C C LEGACY 839L
 B.B.A.R. RUBY MAJORETTE 116G

BW: 80 lbs. Adj. 205D: 805 lbs.

EPDs	BW	WW	YW	MILK	TM	CE	CEM
	+0.7 33%	+29 22%	+55 11%	+9 8%	+24	+8.0 21%	+3.0 5%

B O W E R M A N B R O S .

BLACK ANGUS BULL SALE



17

B.B.A.R EUREKA 9867

MALE XIT 867W 1540495 MAY 17 2009

O C C MUSCLE MAN 710M
B.B.A.R. EUREKA 459 1227479
 B.B.A.R. MISS MORRISON 59H

B.B.A.R. LEGACY 4234
BBCR LADY MONOGRAM 6167 1337857
 B.B.A.R. LADY MONOGRAM 2167

O C C EUREKA 865E
 O C C IDEAL BLACKBIRD 701F
 JOHNSTON NUGGET 370E
 MISS MORRISON 18/94

O C C LEGACY 839L
 B.B.A.R. RUBY BELLE 1934
 JOHNSTON NUGGET 370E
 B.B.A.R. LADY MONOGRAM 167'96

BW: 83 lbs. Adj. 205D: 805 lbs.

EPDs	BW	WW	YW	MILK	TM	CE	CEM
	+1.4 33%	+31 22%	+55 11%	+8 9%	+24	+7.0 21%	+4.0 6%



Group of four B.B.A.R Eureka 469 daughters

18

B.B.A.R EUREKA 9467

MALE XIT 467W 1540486 APRIL 30 2009

O C C MUSCLE MAN 710M
B.B.A.R. EUREKA 459 1227479
 B.B.A.R. MISS MORRISON 59H

O C C LEGACY 839L
B.B.A.R. LADY MONOGRAM 4567 1227507
 B.B.A.R. LADY MONOGRAM 267K

O C C EUREKA 865E
 O C C IDEAL BLACKBIRD 701F
 JOHNSTON NUGGET 370E
 MISS MORRISON 18/94

O C C ECHELON 857E
 O C C DIXIE ERICA 960E
 JOHNSTON NUGGET 370E
 B.B.A.R. LADY MONOGRAM 167'96

BW: 92 lbs. Adj. 205D: 860 lbs.

EPDs	BW	WW	YW	MILK	TM	CE	CEM
	+2.6 34%	+37 23%	+66 12%	+8 10%	+27	+4.0 22%	+1.0 7%



19

B.B.A.R EUREKA 9367

MALE XIT 367W 1540478 MAY 13 2009

O C C MUSCLE MAN 710M
B.B.A.R. EUREKA 459 1227479
 B.B.A.R. MISS MORRISON 59H

B.B.A.R. ROYCE 24G
B.B.A.R. LADY MONOGRAM 2567 1114042
 B.B.A.R. LADY MONOGRAM 267K

O C C EUREKA 865E
 O C C IDEAL BLACKBIRD 701F
 JOHNSTON NUGGET 370E
 MISS MORRISON 18/94

STEVENSON ROYCE 741C NHF CAF
 RUBY MAJORETTE 24/94
 JOHNSTON NUGGET 370E
 B.B.A.R. LADY MONOGRAM 167'96

BW: 91 lbs. Adj. 205D: 859 lbs.

EPDs	BW	WW	YW	MILK	TM	CE	CEM
	+2.4 34%	+35 23%	+67 11%	+11 10%	+29	+4.0 22%	+2.0 7%

BOWERMAN BROS.

BLACK ANGUS BULL SALE



Lot 20



Lot 21

20

B.B.A.R EUREKA 939

MALE XIT 39W 1597792 MAY 2 2009

O C C MUSCLE MAN 710M
B.B.A.R. EUREKA 459 1227479
 B.B.A.R. MISS MORRISON 59H

O C C EUREKA 865E
 O C C IDEAL BLACKBIRD 701F
 JOHNSTON NUGGET 370E
 MISS MORRISON 18/94

O C C LEGACY 839L
B.B.A.R MISS PRIDE 639 1337804
 B.B.A.R PRIDE 339

O C C ECHELON 857E
 O C C DIXIE ERICA 960E
 JOHNSTON NUGGET 370E
 SANDY BAR PRIDE 39J

BW: 89 lbs. Adj. 205D: 885 lbs.

EPDs	BW	WW	YW	MILK	TM	CE	CEM
	+1.0 P+	+39 P+	+69 P+	+8 P+			

21

B.B.A.R EUREKA 9122

MALE XIT 122W 1540483 MAY 25 2009

O C C MUSCLE MAN 710M
B.B.A.R. EUREKA 459 1227479
 B.B.A.R. MISS MORRISON 59H

O C C EUREKA 865E
 O C C IDEAL BLACKBIRD 701F
 JOHNSTON NUGGET 370E
 MISS MORRISON 18/94

SITZ ALLIANCE 83K
B.B.A.R. LADY FANNY 4122 1227463
 B.B.A.R. LADY FANNY 22G

SITZ ALLIANCE 6595 NHF AMF
 SITZ RACHEL 2156
 JOHNSTON NUGGET 370E
 LADY FANNY 22/94

BW: 88 lbs. Adj. 205D: 827 lbs.

EPDs	BW	WW	YW	MILK	TM	CE	CEM
	+2.0 34%	+31 23%	+56 11%	+11 10%	+27	+5.0 21%	+4.0 6%



Bowerman bulls on pasture

22

B.B.A.R EUREKA 9566

MALE LAE 566W 1540519 MAY 13 2009

O C C MUSCLE MAN 710M
B.B.A.R. EUREKA 459 1227479
 B.B.A.R. MISS MORRISON 59H

O C C EUREKA 865E
 O C C IDEAL BLACKBIRD 701F
 JOHNSTON NUGGET 370E
 MISS MORRISON 18/94

SITZ ALLIANCE 83K
B.B.A.R BLACKCAP ELVA 5266 1282717
 B.B.A.R. ENCHANTRESS 2166

SITZ ALLIANCE 6595 NHF AMF
 SITZ RACHEL 2156
 JOHNSTON NUGGET 370E
 B.B.A.R. BLACKCAP ELVA 66'96

BW: 79 lbs. Adj. 205D: 780 lbs.

EPDs	BW	WW	YW	MILK	TM	CE	CEM
	+0.6 34%	+26 23%	+47 11%	+9 10%	+22	+9.0 21%	+7.0 7%

BOWERMAN BROS.

BLACK ANGUS BULL SALE



Lot 23



Lot 25

23

B.B.A.R EUREKA 966

MALE LAE 66W 1540511 APRIL 29 2009

O C C MUSCLE MAN 710M
B.B.A.R. EUREKA 459 1227479
 B.B.A.R. MISS MORRISON 59H

O C C EUREKA 865E
 O C C IDEAL BLACKBIRD 701F
 JOHNSTON NUGGET 370E
 MISS MORRISON 18/94

B.B.A.R. ROYCE 24G
B.B.A.R. BLACKCAP ELVA 066K 1035388
 VALLEYHILLS BLACKCAP ELVA 66B

STEVENSON ROYCE 741C NHF CAF
 RUBY MAJORETTE 24/94
 BASIN EMULATION 5653 NHF AMF CAF
 VALLEYHILLS BLACKCAP ELVA 54U

BW: 82 lbs. Adj. 205D: 778 lbs.

EPDs	BW	WW	YW	MILK	TM	CE	CEM
	+0.6 34%	+23 23%	+46 11%	+7 11%	+19	+7.0 22%	+5.0 8%

25

B.B.A.R EUREKA 9318

MALE XIT 318W 1540496 APRIL 28 2009

O C C MUSCLE MAN 710M
B.B.A.R. EUREKA 459 1227479
 B.B.A.R. MISS MORRISON 59H

O C C EUREKA 865E
 O C C IDEAL BLACKBIRD 701F
 JOHNSTON NUGGET 370E
 MISS MORRISON 18/94

SITZ ALLIANCE 83K
B.B.A.R. MISS MORRISON 6218 1337762
 B.B.A.R. MISS MORRISON 118G

SITZ ALLIANCE 6595 NHF AMF
 SITZ RACHEL 2156
 JOHNSTON NUGGET 370E
 MISS MORRISON 18/94

BW: 81 lbs. Adj. 205D: 868 lbs.

EPDs	BW	WW	YW	MILK	TM	CE	CEM
	+1.4 34%	+36 23%	+61 11%	+11 9%	+29	+7.0 21%	+5.0 7%

24

B.B.A.R EUREKA 9418

MALE XIT 418W 1540498 MAY 10 2009

O C C MUSCLE MAN 710M
B.B.A.R. EUREKA 459 1227479
 B.B.A.R. MISS MORRISON 59H

O C C EUREKA 865E
 O C C IDEAL BLACKBIRD 701F
 JOHNSTON NUGGET 370E
 MISS MORRISON 18/94

O C C LEGACY 839L
B.B.A.R. MISS MORRISON 6418 1337791
 B.B.A.R. MISS MORRISON 1318

O C C ECHELON 857E
 O C C DIXIE ERICA 960E
 STEVENSON BRUNO 561G NHF CAF
 B.B.A.R. MISS MORRISON 118G

BW: 81 lbs. Adj. 205D: 861 lbs.

EPDs	BW	WW	YW	MILK	TM	CE	CEM
	+1.0 34%	+34 23%	+60 12%	+8 10%	+25	+7.0 22%	+3.0 8%

26

B.B.A.R EUREKA 9262

MALE XIT 262W 1540494 MAY 20 2009

O C C MUSCLE MAN 710M
B.B.A.R. EUREKA 459 1227479
 B.B.A.R. MISS MORRISON 59H

O C C EUREKA 865E
 O C C IDEAL BLACKBIRD 701F
 JOHNSTON NUGGET 370E
 MISS MORRISON 18/94

B.B.A.R. LEGACY 4234
B.B.A.R. RUBY MAJORETTE 6162 1337807
 B.B.A.R. RUBY MAJORETTE 362

O C C LEGACY 839L
 B.B.A.R. RUBY BELLE 1934
 B.B.A.R. BIG JAKE 1216
 B.B.A.R. RUBY MAJORETTE 62H

BW: 74 lbs. Adj. 205D: 858 lbs.

EPDs	BW	WW	YW	MILK	TM	CE	CEM
	-0.1 33%	+34 22%	+59 10%	+7 8%	+24	+10.0 21%	+6.0 6%

BOWERMAN BROS.

BLACK ANGUS BULL SALE

27

B.B.A.R EUREKA 9162

MALE XIT 162W 1540480 MAY 30 2009

O C C MUSCLE MAN 710M
B.B.A.R. EUREKA 459 1227479
 B.B.A.R. MISS MORRISON 59H

B.B.A.R. BIG JAKE 1216
B.B.A.R. RUBY MAJORETTE 362 1157926
 B.B.A.R. RUBY MAJORETTE 62H

O C C EUREKA 865E
 O C C IDEAL BLACKBIRD 701F
 JOHNSTON NUGGET 370E
 MISS MORRISON 18/94

T Z JAGUAR 9J
 B.B.A.R. RUBY MAJORETTE 116G
 JOHNSTON NUGGET 370E
 RUBY MAJORETTE 16'94

BW: 83 lbs. Adj. 205D: 758 lbs.

EPDs	BW	WW	YW	MILK	TM	CE	CEM
	+1.0 34%	+27 23%	+49 10%	+3 10%	+17	+8.0 21%	+6.0 6%



Lot 31

28

B.B.A.R EUREKA 933

MALE XIT 33W 1540469 JUNE 08 2009

O C C MUSCLE MAN 710M
B.B.A.R. EUREKA 459 1227479
 B.B.A.R. MISS MORRISON 59H

JOHNSTON NUGGET 370E
B.B.A.R. MISS MORRISON 33G 909260
 MISS MORRISON 33/94

O C C EUREKA 865E
 O C C IDEAL BLACKBIRD 701F
 JOHNSTON NUGGET 370E
 MISS MORRISON 18/94

NUGGET 801X OF J R S NHF AMF CAF
 N BAR KINCHTRY BEAUTY 7393
 G T MAXIMUM NHF AMF CAF
 MORRISON MO 33'80

BW: 86 lbs. Adj. 205D: 725 lbs.

EPDs	BW	WW	YW	MILK	TM	CE	CEM
	+2.0 34%	+25 23%	+48 10%	+0 11%	+13	+5.0 22%	+3.0 8%

30

B.B.A.R EUREKA 918

MALE XIT 18W 1540466 JUNE 28 2009

O C C MUSCLE MAN 710M
B.B.A.R. EUREKA 459 1227479
 B.B.A.R. MISS MORRISON 59H

G T MAXIMUM NHF AMF CAF
MISS MORRISON 18/94 874443
 MISS MORRISON MO 18'81

O C C EUREKA 865E
 O C C IDEAL BLACKBIRD 701F
 JOHNSTON NUGGET 370E
 MISS MORRISON 18/94

SCOTCH CAP NHF AMF CAF
 GT MISS TRAVELER 58
 ROLLING STOCK CHALLENGER 16J
 DON WOOD MORRISON 46'77

BW: 73 lbs. Adj. 205D: 750 lbs.

EPDs	BW	WW	YW	MILK	TM	CE	CEM
	+0.0 35%	+22 25%	+46 12%	+1 12%	+12	+9.0 22%	+5.0 9%

29

B.B.A.R EUREKA 934

MALE XIT 34W 1540473 JULY 15 2009

O C C MUSCLE MAN 710M
B.B.A.R. EUREKA 459 1227479
 B.B.A.R. MISS MORRISON 59H

B.B.A.R. ROYCE 24G
B.B.A.R. RUBY BELLE 34'99 989835
 B.B.A.R. RUBY BELLE 34G

O C C EUREKA 865E
 O C C IDEAL BLACKBIRD 701F
 JOHNSTON NUGGET 370E
 MISS MORRISON 18/94

STEVENSON ROYCE 741C NHF CAF
 RUBY MAJORETTE 24/94
 JOHNSTON NUGGET 370E
 RUBY BELLE 34C

BW: 81 lbs.

EPDs	BW	WW	YW	MILK	TM	CE	CEM
	+1.7 P	+30 P	+57 P	+9 P	+24	+5.0 P	+3.0 P

31

B.B.A.R MUSCLEMAN 9233

MALE XIT 233W 1540505 MAY 09 2009

O C C EUREKA 865E
O C C MUSCLE MAN 710M 1189149
 O C C IDEAL BLACKBIRD 701F

B.B.A.R. LEGACY 5167
B.B.A.R. MISS MORRISON 7233 1402996
 B.B.A.R. MISS MORRISON 333

O C C BACKSTOP 888B
 BLACKBIRD OF R R 1204
 O C C BOULDER 855B
 EE 6286 OF IDEAL 4109-1254

O C C LEGACY 839L
 B.B.A.R. LADY MONOGRAM 167'96
 JOHNSTON NUGGET 370E
 MISS MORRISON 33/94

BW: 80 lbs. Adj. 205D: 821 lbs.

EPDs	BW	WW	YW	MILK	TM	CE	CEM
	+1.7 34%	+33 23%	+57 16%	+6 12%	+23	+6.0 24%	+0.0 9%

BOWERMAN BROS.

BLACK ANGUS BULL SALE

32

B.B.A.R MUSCLEMAN 9433

MALE XIT 433W 1540507 MAY 08 2009

O C C EUREKA 865E
O C C MUSCLE MAN 710M 1189149
 O C C IDEAL BLACKBIRD 701F

B.B.A.R. LEGACY 4234
B.B.A.R MISS MORRISON 7433 1403039
 B.B.A.R MISS MORRISON 5233

O C C BACKSTOP 888B
 BLACKBIRD OF R R 1204
 O C C BOULDER 855B
 EE 6286 OF IDEAL 4109-1254

O C C LEGACY 839L
 B.B.A.R RUBY BELLE 1934
 O C C MUSCLE MAN 710M
 B.B.A.R. MISS MORRISON 3133

BW: 82 lbs. Adj. 205D: 770 lbs.

EPDs	BW	WW	YW	MILK	TM	CE	CEM
	+1.8 32%	+22 22%	+44 14%	+7 12%	+18	+6.0 24%	-2.0 9%

35

B.B.A.R GARTH 915

MALE XIT 15W 1540482 MAY 03 2009

GARTH G256 NHF CAF
STEVENSON GARTH W24S 1537617
 WILSAR SASSY 16D

O C C MUSCLE MAN 710M
4 CORNERS RUBY BARONETTE 15P 1216077
 B.B.A.R. RUBY BARONETTE 2028

BALDRIDGE NOTCH A C
 G A R EXT 614 AMF
 BASIN EMULATION 5653 NHF AMF CAF
 WILSAR SASSY 505B

O C C EUREKA 865E
 O C C IDEAL BLACKBIRD 701F
 JOHNSTON NUGGET 370E
 B.B.A.R. RUBY BARONETTE 28'93

BW: 70 lbs. Adj. 205D: 807 lbs.

EPDs	BW	WW	YW	MILK	TM	CE	CEM
	-1.5 31%	+36 20%	+64 12%	+10 9%	+28	+12.0 20%	+7.0 6%

33

B.B.A.R MUSCLEMAN 916

MALE XIT 16W 1540471 MAY 08 2009

O C C EUREKA 865E
O C C MUSCLE MAN 710M 1189149
 O C C IDEAL BLACKBIRD 701F

C H QUANTUM 3330
B.B.A.R. RUBY MAJORETTE 16'99 989815
 RUBY MAJORETTE 16'93

O C C BACKSTOP 888B
 BLACKBIRD OF R R 1204
 O C C BOULDER 855B
 EE 6286 OF IDEAL 4109-1254

G D A R QUANTUM 1245
 DIXIE ERICA OF C H 6180
 G T MAXIMUM NHF AMF CAF
 RUBY MAJORETTE MO 16'84

BW: 88 lbs. Adj. 205D: 837 lbs.

EPDs	BW	WW	YW	MILK	TM	CE	CEM
	+2.1 35%	+27 25%	+49 17%	+8 16%	+22	+5.0 26%	+1.0 12%

36

B.B.A.R GARTH 9116

MALE XIT 116W 1540477 APRIL 29 2009

GARTH G256 NHF CAF
STEVENSON GARTH W24S 1537617
 WILSAR SASSY 16D

JOHNSTON NUGGET 370E
B.B.A.R. RUBY MAJORETTE 2116 1113980
 RUBY MAJORETTE 16'94

BALDRIDGE NOTCH A C
 G A R EXT 614 AMF
 BASIN EMULATION 5653 NHF AMF CAF
 WILSAR SASSY 505B

NUGGET 801X OF J R S NHF AMF CAF
 N BAR KINCHTRY BEAUTY 7393
 G T MAXIMUM NHF AMF CAF
 RUBY MAJORETTE MO 16'84

BW: 81 lbs. Adj. 205D: 868 lbs.

EPDs	BW	WW	YW	MILK	TM	CE	CEM
	+0.7 33%	+44 22%	+73 14%	+11 12%	+33	+7.0 21%	+7.0 9%

34

B.B.A.R GARTH 9416

MALE XIT 416W 1540484 APRIL 30 2009

GARTH G256 NHF CAF
STEVENSON GARTH W24S 1537617
 WILSAR SASSY 16D

O C C LEGACY 839L
B.B.A.R. RUBY MAJORETTE 4416 1227517
 B.B.A.R. RUBY MAJORETTE 2116

BALDRIDGE NOTCH A C
 G A R EXT 614 AMF
 BASIN EMULATION 5653 NHF AMF CAF
 WILSAR SASSY 505B

O C C ECHELON 857E
 O C C DIXIE ERICA 960E
 JOHNSTON NUGGET 370E
 RUBY MAJORETTE 16'94

BW: 80 lbs. Adj. 205D: 895 lbs.

EPDs	BW	WW	YW	MILK	TM	CE	CEM
	+0.5 33%	+46 22%	+77 13%	+14 11%	+37	+8.0 22%	+6.0 9%



The bull pen

BOWERMAN BROS.

BLACK ANGUS FEMALES



Lot 37
Stevenson Lady 8760

37

STEVENSON LADY 8760

FEMALE IMP 8760K 1537622 MARCH 05 2000

G D A R RAINMAKER 340
STEVENSON ROLLING THUNDER NHF CAF 12747805
AHLGRENS ESTELLA 2758 E T E

LOVANA
LADY BLACKBIRD 987 G D A R
IBERIAN MASSIVE OF LOVEMERE
AHLGRENS ESTELLA 2273

MGR 604G OF PARTNER
STEVENSON LADY 305H 13079379
STEVENSON LADY 753E

BASIN EMULATION 178C
M R G MAUDIE 93G
TRAVELER 425B OF JRS
STEVENSON LADY 131C

BW: N/A

EPDs	BW	WW	YW	MILK	TM	CE	CEM
	-0.3 51%	+36 38%	+68 35%	+27 35%	+45	+9.0 33%	+10.0 24%

Stevenson Lady 8760 was purchased in 2007 at the Stevenson-Basin Female Sale as a feature donor cow. She is a very productive sound and fertile Pathfinder cow - the highest production Rolling Thunder daughter in the Stevenson herd. She has averaged 11 #1 eggs per flush, then rebred and has raised two natural heifers which we are offering for sale as Lots 37A & 37B.

This is a rare opportunity to acquire this type of genetics.

37A

O C C ECHELON 857E
O C C LEGACY 839L 1193688
O C C DIXIE ERICA 960E

STEVENSON ROLLING THUNDER NHF CAF
STEVENSON LADY 8760 1537622
STEVENSON LADY 305H

BW: 82 lbs.

37B

O C C EMBLAZON 854E NHF AMF CAF
O C C KIDDO 832K NHF AMF CAF 1541694
O C C JUANADA 957F

STEVENSON ROLLING THUNDER NHF CAF
STEVENSON LADY 8760 1537622
STEVENSON LADY 305H

BW: 78 lbs. Adj. 205D: 736 lbs.

EPDs	BW	WW	YW	MILK	TM	CE	CEM
	+0.5 36%	+41 26%	+67 19%	+17 17%	+38	+8.0 P	+6.0 P

B.B.A.R LADY 1060

FEMALE XIT 60X APPLIED MAY 11 2010

D H D TRAVELER 6807 NHF AMF
DIXIE ERICA OF C H 1019
O C C ANCHOR 771A CAF
DIXIE ERICA OF R R 4345

G D A R RAINMAKER 340
AHLGRENS ESTELLA 2758 E T E
MGR 604G OF PARTNER
STEVENSON LADY 753E

B.B.A.R LADY 960

FEMALE XIT 60W 1549264 MARCH 14 2009

D H D TRAVELER 6807 NHF AMF
DIXIE ERICA OF C H 1019
O C C ANCHOR 771A CAF
O C C JUANADA 775C

G D A R RAINMAKER 340
AHLGRENS ESTELLA 2758 E T E
MGR 604G OF PARTNER
STEVENSON LADY 753E

Please join us for a complimentary lunch on Sale Day

B O W E R M A N B R O S .

BLACK ANGUS BULL SALE

NESSET LAKE ANGUS

Ivan, Julie, Jenna & Lacey Demmans
 Box 225, Meadow Lake, SK S9X 1Y2
 PH: 306-236-6058 Cell: 306-236-8086

We are pleased to be hosting our 6th Annual Black Angus Bull Sale at the Meadow Lake Stockyards. We are excited to bring you our top bull selections and a select group of heifers from the heart of our replacements. The positive outlook in the agriculture industry is one we have not seen for a number of years. The prices are looking great for the spring and fall calf markets. It will be exciting to be a part of this upswing in the industry. The bulls have been fed a ration of 14% range pellets and free choice hay. We feel that these top end bulls in the sale have excelled at a high rate of gain on this ration. The bulls have been vaccinated spring and pre-weaning with express vaccine. The A.I. sires we have selected have a balance of calving ease, fleshing ability and strong maternal traits.

Our cows' swath graze until mid-January so we select for low maintenance cattle. We run a family operation so temperament is also an important trait in our herd.



We had a busy year, which saw Jenna marrying Chris Ward, and we were very excited to have a granddaughter born on January 1, 2011.

We would like to take this opportunity to thank all of our past buyers and look forward to seeing you again this year. We invite anyone interested in viewing the bulls or heifer pens to stop by for a visit and the coffee is always on. We are looking forward to meeting and visiting with you on sale day.

Ivan, Julie & Lacey
 Jenna, Chris & Madison



Chris, Jenna & Madison Ward



Lacey, Ivan & Julie

Nesset Lake Angus reserves the right to draw semen for in herd use from any of the bulls at purchasers convenience and sellers expense.



S A V Final Answer 0035

J

S A V FINAL ANSWER 0035

REFERENCE IMP 035K 1061938 NHF AMF CAF FEBRUARY 22 2000

G D A R TRAVELER 71 NHF AMF CAF
SITZ TRAVELER 8180 NHF AMF CAF 866597
 SITZ EVERELDA ENTENSE 1137

TRAVELER 1148 G D A R
 G D A R MISS BLACKCAP 567
 G D A R RAINMAKER 340
 SITZ EVERELDA ENTENSE 2335

BON VIEW BANDO 598 AMF CAC
S A V EMULOUS 8145 13094078
 S A V SKY EMULOUS 2124

TEHAMA BANDO 155 NHF AMF CAF
 BON VIEW DORA 56
 ELLANIN SKY DIVER
 TAIL N 0383

EPDs	BW	WW	YW	MILK	TM	CE	CEM
	-1.0 97%	+61 96%	+104 94%	+19 81%	+50	+12.0 94%	+9.0 72%

A famous sire for easy doing, fertile cattle. Designated Elite since 2007.

NESSET LAKE ANGUS

REFERENCE SIREs

K DUNLOUISE CORTACHY BOY D137

REFERENCE IMP 137P 1486724 NHF AMF CAF SEPTEMBER 08 2004

EROCO OF BANKHEAD
ASHLEY EULAR 15815538
 ASHLEY EULONA

RAMBLER OF NEWCROFT
 ELANARA 2 OF BANKHEAD
 EUTHEDAX OF DOUNESIDE
 ASHLEY EULINA

ASHLEY ELMIGHTY
CHAMPAGNE CHERRY BEE B117 15726484
 CHERRY BEE W9 OF CHAMPAGNE

EVERSTRIKE OF MILLHOUSE
 ASHLEY ELSARA
 EVAN OF CHAMPAGNE
 CHERRY BEE OF CHAMPAGNE

BW: 73 lbs.

EPDs	BW	WW	YW	MILK	TM	CE	CEM
	+1.5 84%	+12 76%	+15 51%	+2 5%	+8	+0.0 51%	+1.0 5%

A Scottish bull with moderate frame that will add muscle.



Dunlouise Cortachy Boy D137

L DUNLOUISE COMMANDER BOND

REFERENCE IMP 176S 1486721 NHF AMF CAF JANUARY 28 2006

NEWHOUSE EDWIN ELKO
WEDDERLIE EVICTOR 197003
 EVISTA OF WEDDERLIE

JESEDAX ERIC OF DOUNESIDE
 NEWHOUSE EDWINA EMILY
 NEWHOUSE EXCELLENCE
 EVICTRESS OF WEDDERLIE

ASHLEY ELMIGHTY
CHAMPAGNE CHERRY BEE B117 15726484
 CHERRY BEE W9 OF CHAMPAGNE

EVERSTRIKE OF MILLHOUSE
 ASHLEY ELSARA
 EVAN OF CHAMPAGNE
 CHERRY BEE OF CHAMPAGNE

BW: 66 lbs.

EPDs	BW	WW	YW	MILK	TM	CE	CEM
	-0.7 82%	+2 72%	-12 22%	+2 5%	+3	+5.0 39%	+3.0 5%

Offers muscle, style and outcross pedigree.



Dunlouise Commander Bond

M LODGE TOTAL 15U

REFERENCE VLC 15U 1457170 JANUARY 15 2008

SITZ ALLIANCE 6595 NHF AMF
K C F BENNETT TOTAL NHF AMF CAF 1083033
 EXT OF CONANGA 6790

SITZ TRAVELER 8180 NHF AMF CAF
 SITZ BARBARAMERE JET 2698
 N BAR EMULATION EXT NHF AMF CAF
 LADY ENCHANTRESS OF CONANGA

F A R KRUGERRAND 410H NHF AMF CAF
LODGE COUNTESS 62R 1250517
 LODGE COUNTESS 2J

KRUGERRAND OF DONAMERE 490 NHF AMF
 F A R ERIANNA 286F
 EASTONDALE EXTRA 19G
 EASTONDALE COUNTESS 3G

BW: 89 lbs. Adj. 205D: 730 lbs. Adj. 365D: 1356 lbs.

EPDs	BW	WW	YW	MILK	TM	CE	CEM
	+2.6 48%	+50 35%	+98 25%	+18 21%	+43	+2.0 33%	+6.0 18%

Purchased at the Triple A Bull Sale for his performance and he had a 14.68 ribeye. This bull was recommended by Joyce and Laird Senft. He said he was too good of a bull to go to a commercial herd.



Lodge Total 15U

NESSET LAKE ANGUS

REFERENCE SIREs



GBT Forte 861

N

GBT FORTE 861

REFERENCE TB 861U 1457541 MARCH 18 2008

PAPA FORTE 1921
BAD LANDS FORTE 5S 1321570
 BAD LANDS PRINCESS 63K

PAPA OPTIMA 9818
 PAPA ENVIOUS BLACKBIRD 8832
 HBR ECLIPSE 7116
 BAD LANDS PRINCESS 835H

WAVENY ULTRA 16F
HOLLBROOK SOCIALITE 48K 1020068
 HOLLBROOK SOCIALITE 3H

O S U 6T6 ULTRA
 DWW GAMMER 8U
 N BAR EMULATION EXT NHF AMF CAF
 HOLLBROOK SOCIALITE 2F

BW: 89 lbs. Adj. 205D: 694 lbs. Adj. 365D: 1214 lbs.

EPDs	BW	WW	YW	MILK	TM	CE	CEM
	+3.8 51%	+42 37%	+70 21%	+17 12%	+38	+2.0 30%	+5.0 9%

Purchased this bull because he was moderate framed, thick topped, massive rib and also for his phenotype. He is working well on our 2164 daughters.



Nesset Lake Windy 20T

O

NESSET LAKE WINDY 20T

REFERENCE IDM 20T 1393017 FEBRUARY 05 2007

A A R WINDY RIDGE 362
A A R REALLY WINDY 1205 NHF AMF CAF 1036963
 A A R LADY KELTON 2170

WINDY RIDGE COMMODORE
 A A R FERNS PRIDE 1170
 WINDY RIDGE COMMODORE
 A A R LADY KELTON 66

WIWA CREEK TREND 51'93
ANDERS IRIS 37J 979243
 WAVENY ROSEBUD 131Z

WHITE LAKE STYLE TREND 1A
 WIWA CREEK ERICA 13X 11'90
 DWW MINBURN TONKA 8X
 WAVENY ROSEBUD 031X

BW: 96 lbs. Adj. 205D: 720 lbs. Adj. 365D: 1273 lbs.

EPDs	BW	WW	YW	MILK	TM	CE	CEM
	-0.1 58%	+33 44%	+68 37%	+11 21%	+28	+9.0 41%	+2.0 18%

P

MFA FINAL ANSWER 24U

REFERENCE MF 24U 1435070 JANUARY 30 2008

SITZ TRAVELER 8180 NHF AMF CAF
S A V FINAL ANSWER 0035 NHF AMF CAF 1061938
 S A V EMULOUS 8145

G D A R TRAVELER 71 NHF AMF CAF
 SITZ EVERELDA INTENSE 1137
 BON VIEW BANDO 598 AMF CAC
 S A V SKY EMULOUS 2124

MFA TIMELINE 69M
MFA PRINCESS 92S 1320591
 MFA PRINCESS 114M

CONNELLY TIMELINE CAF
 MFA PRIDE 42K
 EVERBLACK ESTON 4J
 MFA PRINCESS 43H

BW: 80 lbs. Adj. 205D: 753 lbs. Adj. 365D: 1300 lbs.

EPDs	BW	WW	YW	MILK	TM	CE	CEM
	-1.6 50%	+52 37%	+92 26%	+22 18%	+48	+11.0 34%	+9.0 17%

Purchased at the Black Harvest Sale for his extreme wide base and he carried his thickness all the way through. He still had a moderate birth weight of 80 lbs and he had a large ribeye of 15.37.



MVF Final Answer 24U

NESSET LAKE ANGUS

REFERENCE SIREs

Q

NESSET LAKE FREIGHTLINER 17U

REFERENCE IDM 17U 1480796 ET JANUARY 24 2008

BON VIEW BANDO 598 AMF CAC
CONNELLY FREIGHTLINER NHF AMF CAF 964749
 JOANA ERICA OF CONANGA

TEHAMA BANDO 155 NHF AMF CAF
 BON VIEW DORA 56
 NICHOLS HEAVY DUTY X100
 JARNE ERICA OF CONANGA

NESSET LAKE RAINMAKER 1Z
NESSET LAKE ERICA 76C 777189
 NESSET LAKE ERICA 2A

G D A R RAINMAKER 340
 WILBAR MAYFLOWER 88R
 LEACHMAN NEW STYLE
 ERICA OF CROSSMOUNT 7S

BW: 77 lbs. Adj. 205D: 695 lbs. Adj. 365D: 1228 lbs.

EPDs	BW	WW	YW	MILK	TM	CE	CEM
	+0.3 52%	+38 40%	+68 24%	+21 22%	+40	+6.0 32%	+6.0 18%

We flushed our old 76C cow hoping for more heifers and we retained this son feeling he will leave us some exceptional daughters in our herd.



Nesset Lake Freightliner 17U

R

DOUBLE AA BARDOLIER 47'06

REFERENCE RCE 47S 1329580 FEBRUARY 20 2006

DOUBLE AA BARDOLIER 550'00
DOUBLE AA BARDOLIER 322'03 1162365
 DOUBLE AA ANNIE K 674'99

DOUBLE AA BARDOLIER 505'97
 DOUBLE AA ANNIE K 64'94
 LANCER OF RIDGE LANE 4G
 SHALICA ANNIE K 199 97

DOUBLE AA RITO 206'97
DOUBLE AA ANNIE K 289'02 1103193
 DOUBLE AA ANNIE K 534'92

DOUBLE AA RETO 554'93
 DOUBLE AA ANNIE K 504'90
 DOUBLE AA BARDOLIER 15'90
 DOUBLE AA ANNIE K 605'82

BW: 90 lbs.

EPDs	BW	WW	YW	MILK	TM	CE	CEM
	+4.3 33%	+36 24%	+65 17%	+11 11%	+29	-7.0 20%	-1.0 6%

S

O C C EMBLAZON 854E

REFERENCE IMP 854E 1541351 ET NHF AMF CAF MARCH 19 1995

Q A S TRAVELER 23-4 NHF AMF CAF
D H D TRAVELER 6807 NHF AMF 773800
 BEMINDFUL MAID D H D 0807

BAND 234 OF IDEAL 3163
 Q A S BLACKBIRD EVE 601 1
 PBC 707 1M F0203
 BEMINDFUL MAID OF R R 1079

PBC 707 1M F0203
DIXIE ERICA OF C H 1019 9973782
 DIXIE ERICA OF C H 615

R R RITO 707 NHF AMF CAF
 EVOCATE PRINCESS T
 SCHEARBROOK EMULOUS 11N7
 R R DIXIE ERICA OF C H 447

EPDs	BW	WW	YW	MILK	TM	CE	CEM
	+0.8 97%	+49 95%	+79 93%	+10 91%	+35	+11.0 90%	+1.0 86%

Remember . . .

- Free Delivery on bulls up to 300 miles and the rest at the cost of fuel.
- All bulls will be kept until May 1, 2011 at no cost to the buyer.
- Bulls must be insured for death loss.
- \$50 discount on two-year-old bulls if picked up on Sale Day.
- Sale weights and scrotal measurements available Sale Day.
- Practical, Predictable and Profitable - Conception to Consumer

NESSET LAKE ANGUS

BLACK ANGUS BULL SALE



Lot 38

38 NESSET LAKE FINAL ANSWER 19X

MALE IDM 19X 1588661 ET FEBRUARY 07 2010

SITZ TRAVELER 8180 NHF AMF CAF
S A V FINAL ANSWER 0035 NHF AMF CAF 1061938
S A V EMULOUS 8145

G D A R TRAVELER 71 NHF AMF CAF
SITZ EVERELDA ENTENSE 1137
BON VIEW BANDO 598 AMF CAC
S A V SKY EMULOUS 2124

NESSET LAKE SCOTCHCAP IDM 58K
NESSET LAKE ERICA IDM 111M 1106549
NESSET LAKE ERICA IDM 42K

R R SCOTCHCAP 9440 NHF AMF
NESSET LAKE ERICA 76C
NESSET LAKE TRAVELER 8F
NESSET LAKE ERICA 44H

BW: 94 lbs. Adj. 205D: 749 lbs.
Sept. 16/10 Wt: 800lbs. Jan. 9/11 Wt: 1100 lbs.

EPDs	BW	WW	YW	MILK	TM	CE	CEM
	+0.4 30%	+49 23%	+85 19%	+20 19%	+45	+7.0 P	+7.5 P



*Nesset Lake Erica IDM 111M
Dam of Lot 38 & 39, 40, 41 & 59*

Selling Choice

Lot 38 or Lot 39

Retaining the other for in herd use



Lot 39

We flushed Lacey's old 4-H cow hoping to get some daughters. She is moderate framed, good footed and has an excellent udder. 111M always maintains her condition while raising one of the top calves every year. Lacey has been very successful showing her progeny in 4-H. Her 2010 natural bull calf weighed 820 lbs. on September 16.

39 NESSET LAKE FINAL ANSWER 22X

MALE IDM 22X 1588655 ET FEBRUARY 07 2010

SITZ TRAVELER 8180 NHF AMF CAF
S A V FINAL ANSWER 0035 NHF AMF CAF 1061938
S A V EMULOUS 8145

G D A R TRAVELER 71 NHF AMF CAF
SITZ EVERELDA ENTENSE 1137
BON VIEW BANDO 598 AMF CAC
S A V SKY EMULOUS 2124

NESSET LAKE SCOTCHCAP IDM 58K
NESSET LAKE ERICA IDM 111M 1106549
NESSET LAKE ERICA IDM 42K

R R SCOTCHCAP 9440 NHF AMF
NESSET LAKE ERICA 76C
NESSET LAKE TRAVELER 8F
NESSET LAKE ERICA 44H

BW: 92 lbs. Adj. 205D: 781 lbs.
Sept. 16/10 Wt: 835 lbs. Jan. 9/11 Wt: 1060 lbs.

EPDs	BW	WW	YW	MILK	TM	CE	CEM
	+0.6 P	+50 P	+86 P	+20 P			

These are a thick topped well muscled pair of bulls.

NESSET LAKE ANGUS

BLACK ANGUS BULL SALE

40 NESSET LAKE FINAL ANSWER 14X

MALE IDM 14X 1588659 TWIN ET FEBRUARY 05 2010

SITZ TRAVELER 8180 NHF AMF CAF
S A V FINAL ANSWER 0035 NHF AMF CAF 1061938
 S A V EMULOUS 8145

G D A R TRAVELER 71 NHF AMF CAF
 SITZ EVERELDA ENTENSE 1137
 BON VIEW BANDO 598 AMF CAC
 S A V SKY EMULOUS 2124

NESSET LAKE SCOTCHCAP IDM 58K
NESSET LAKE ERICA IDM 111M 1106549
 NESSET LAKE ERICA IDM 42K

R R SCOTCHCAP 9440 NHF AMF
 NESSET LAKE ERICA 76C
 NESSET LAKE TRAVELER 8F
 NESSET LAKE ERICA 44H

BW: 72 lbs. Adj. 205D: 622 lbs.
 Sept. 16/10 Wt: 690 lbs. Jan. 9/11 Wt: 900 lbs.

EPDs	BW	WW	YW	MILK	TM	CE	CEM
	+0.6 P	+50 P	+86 P	+20 P			

14X and 15X are twins both raised by recip cow.



Nesset Lake pairs

41 NESSET LAKE FINAL ANSWER 15X

MALE IDM 15X 1588660 TWIN ET FEBRUARY 05 2010

SITZ TRAVELER 8180 NHF AMF CAF
S A V FINAL ANSWER 0035 NHF AMF CAF 1061938
 S A V EMULOUS 8145

G D A R TRAVELER 71 NHF AMF CAF
 SITZ EVERELDA ENTENSE 1137
 BON VIEW BANDO 598 AMF CAC
 S A V SKY EMULOUS 2124

NESSET LAKE SCOTCHCAP IDM 58K
NESSET LAKE ERICA IDM 111M 1106549
 NESSET LAKE ERICA IDM 42K

R R SCOTCHCAP 9440 NHF AMF
 NESSET LAKE ERICA 76C
 NESSET LAKE TRAVELER 8F
 NESSET LAKE ERICA 44H

BW: 74 lbs. Adj. 205D: 604 lbs.
 Sept. 16/10 Wt: 690 lbs. Jan. 9/11 Wt: 950 lbs.

EPDs	BW	WW	YW	MILK	TM	CE	CEM
	+0.6 P	+50 P	+86 P	+20 P			

43 NESSET LAKE FINAL ANSWER 18X

MALE IDM 18X 1575793 FEBRUARY 07 2010

SITZ TRAVELER 8180 NHF AMF CAF
S A V FINAL ANSWER 0035 NHF AMF CAF 1061938
 S A V EMULOUS 8145

G D A R TRAVELER 71 NHF AMF CAF
 SITZ EVERELDA ENTENSE 1137
 BON VIEW BANDO 598 AMF CAC
 S A V SKY EMULOUS 2124

RITO 8K4 OF 5028 RITO 3X25 NHF AMF
NESSET LAKE LASS 44U 1441617
 NESSET LAKE LASS 26G

RITO 3X25 OF 5H11 EXT AMF
 RITA 5028 OF 2T4 AMBUSH
 NESSET LAKE RAINMAKER 1Z
 NESSET LAKE LASS 3A

BW: 78 lbs. Adj. 205D: 729 lbs.
 Sept. 16/10 Wt: 700 lbs. Jan. 9/11 Wt: 950 lbs.

EPDs	BW	WW	YW	MILK	TM	CE	CEM
	+1.6 35%	+55 26%	+83 20%	+22 19%	+50	+5.0 28%	+7.0 17%

First calf heifer did a great job.

42 NESSET LAKE FINAL ANSWER 17X

MALE IDM 17X 1575792 FEBRUARY 07 2010

SITZ TRAVELER 8180 NHF AMF CAF
S A V FINAL ANSWER 0035 NHF AMF CAF 1061938
 S A V EMULOUS 8145

G D A R TRAVELER 71 NHF AMF CAF
 SITZ EVERELDA ENTENSE 1137
 BON VIEW BANDO 598 AMF CAC
 S A V SKY EMULOUS 2124

A A R REALLY WINDY 1205 NHF AMF CAF
NESSET LAKE VAL 21U 1476106
 NESSET LAKE VAL 50S

A A R WINDY RIDGE 362
 A A R LADY KELTON 2170
 NESSET LAKE RITO 8K4 IDM 79M
 NESSET LAKE VAL 1C

BW: 88 lbs. Adj. 205D: 720 lbs.
 Sept. 16/10 Wt: 690 lbs. Jan. 9/11 Wt: 1000 lbs.

EPDs	BW	WW	YW	MILK	TM	CE	CEM
	+1.7 35%	+54 26%	+93 20%	+18 19%	+45	+6.0 30%	+5.0 18%

Really Windy dam, calving ease bred in here.

44 NESSET LAKE FINAL ANSWER 4X

MALE IDM 4X 1575781 JANUARY 30 2010

SITZ TRAVELER 8180 NHF AMF CAF
S A V FINAL ANSWER 0035 NHF AMF CAF 1061938
 S A V EMULOUS 8145

G D A R TRAVELER 71 NHF AMF CAF
 SITZ EVERELDA ENTENSE 1137
 BON VIEW BANDO 598 AMF CAC
 S A V SKY EMULOUS 2124

NESSET LAKE FREIGHTLINER 21S
NESSET LAKE RAIN 105U 1476102
 NESSET LAKE RAIN 138S

CONNELLY FREIGHTLINER NHF AMF CAF
 NESSET LAKE TIP TOP 5L
 NESSET LAKE RITO 8K4 IDM 79M
 NESSET LAKE RAIN IDM 126M

BW: 80 lbs. Adj. 205D: 754 lbs.
 Sept. 16/10 Wt: 750 lbs. Jan. 9/11 Wt: 950 lbs.

EPDs	BW	WW	YW	MILK	TM	CE	CEM
	+0.2 35%	+59 25%	+99 17%	+18 17%	+48	+9.0 29%	+9.0 16%

Can't say enough about these Final Answer calves, they are born unassisted and have weaning weights right with the cows.

NESSET LAKE ANGUS

BLACK ANGUS BULL SALE



Lot 47



Lot 48

Selling Choice

Lot 47 or Lot 48

45 NESSET LAKE FINAL ANSWER 11X

MALE JLD 11X 1575788 FEBRUARY 03 2010

SITZ TRAVELER 8180 NHF AMF CAF
S A V FINAL ANSWER 0035 NHF AMF CAF 1061938
S A V EMULOUS 8145

G D A R TRAVELER 71 NHF AMF CAF
SITZ EVERELDA ENTENSE 1137
BON VIEW BANDO 598 AMF CAC
S A V SKY EMULOUS 2124

BAR LU BANDOLIER 73'02
NESSET LAKE QUEEN 113U 1440071
NESSET LAKE QUEEN 14P

LAZY J BANDOLIER 21G
BAR LU NEW DUCHESS 73H
NESSET LAKE STOCKMAN IDM 60L
NESSET LAKE QUEEN 56D

BW: 82 lbs. Adj. 205D: 649 lbs.
Sept. 16/10 Wt: 650 lbs. Jan. 9/11 Wt: 945 lbs.

EPDs	BW	WW	YW	MILK	TM	CE	CEM
	+1.3 35%	+56 25%	+90 19%	+14 18%	+42	+6.0 27%	+7.0 15%

First calf heifer with a good weaning weight.

47 NESSET LAKE CORTACHY BOY 23X

MALE IDM 23X 1588657 ET FEBRUARY 09 2010

ASHLEY EULAR
DUNLOUISE CORTACHY BOY D137 NHF AMF CAF 1486724
CHAMPAGNE CHERRY BEE B117

EROCO OF BANKHEAD
ASHLEY EULONA
ASHLEY ELMIGHTY
CHERRY BEE W9 OF CHAMPAGNE

NESSET LAKE RAINMAKER 1Z
NESSET LAKE ERICA 76C 777189
NESSET LAKE ERICA 2A

G D A R RAINMAKER 340
WILBAR MAYFLOWER 88R
LEACHMAN NEW STYLE
ERICA OF CROSSMOUNT 7S

BW: 96 lbs. Adj. 205D: 708 lbs.
Sept. 16/10 Wt: 750 lbs. Jan. 9/11 Wt: 1040 lbs.

EPDs	BW	WW	YW	MILK	TM	CE	CEM
	+1.2 31%	+18 25%	+27 17%	+13 8%	+22	+1.0 P	+1.0 P

At 17 years of age, Erica 76C still had a perfect udder and good feet. Her natural heifer calf weighed 615 lbs at 205 days.

46 NESSET LAKE FINAL ANSWER 152X

MALE IDM 152X 1575867 MARCH 25 2010

SITZ TRAVELER 8180 NHF AMF CAF
S A V FINAL ANSWER 0035 NHF AMF CAF 1061938
S A V EMULOUS 8145

G D A R TRAVELER 71 NHF AMF CAF
SITZ EVERELDA ENTENSE 1137
BON VIEW BANDO 598 AMF CAC
S A V SKY EMULOUS 2124

BASIN MAX 602C NHF AMF CAF
VALLEYHILLS MISSIE 85U 1463549
VALLEYHILLS MISSIE 94R

G T MAXIMUM NHF AMF CAF
BASIN ELINE ERICA 315U
O C C GLORY 950G
VALLEYHILLS MISSIE 49M

BW: 78 lbs. Adj. 205D: 763 lbs.
Sept. 16/10 Wt: 600 lbs. Jan. 9/11 Wt: 850 lbs.

EPDs	BW	WW	YW	MILK	TM	CE	CEM
	+1.5 35%	+54 26%	+98 19%	+18 19%	+45	+6.0 30%	+5.0 18%

End of March bull off a 602C daughter we purchased at the Valley Hills Dispersal Sale.

48 NESSET LAKE CORTACHY BOY 25X

MALE IDM 25X 1588658 ET FEBRUARY 10 2010

ASHLEY EULAR
DUNLOUISE CORTACHY BOY D137 NHF AMF CAF 1486724
CHAMPAGNE CHERRY BEE B117

EROCO OF BANKHEAD
ASHLEY EULONA
ASHLEY ELMIGHTY
CHERRY BEE W9 OF CHAMPAGNE

NESSET LAKE RAINMAKER 1Z
NESSET LAKE ERICA 76C 777189
NESSET LAKE ERICA 2A

G D A R RAINMAKER 340
WILBAR MAYFLOWER 88R
LEACHMAN NEW STYLE
ERICA OF CROSSMOUNT 7S

BW: 92 lbs. Adj. 205D: 636 lbs.
Sept. 16/10 Wt: 670 lbs. Jan. 9/11 Wt: 1000 lbs.

EPDs	BW	WW	YW	MILK	TM	CE	CEM
	+1.1 P	+17 P	+26 P	+14 P			

NESSET LAKE ANGUS

BLACK ANGUS BULL SALE

49 NESSET LAKE CORTACHY BOY 48X

MALE IDM 48X 1575812 FEBRUARY 20 2010

ASHLEY EULAR
DUNLOUISE CORTACHY BOY D137 NHF AMF CAF 1486724
CHAMPAGNE CHERRY BEE B117

EROCO OF BANKHEAD
ASHLEY EULONA
ASHLEY ELMIGHTY
CHERRY BEE W9 OF CHAMPAGNE

TC STOCKMAN 2164 AMF
NESSET LAKE VAL IDM 11M 1106541
NESSET LAKE VAL 44J

TC STOCKMAN
TC RUBY 5087
R R SCOTCHCAP 9440 NHF AMF
NESSET LAKE VAL 9F

BW: 83 lbs. Adj. 205D: 642 lbs.
Sept. 16/10 Wt: 650 lbs. Jan. 9/11 Wt: 950 lbs.

EPDs	BW	WW	YW	MILK	TM	CE	CEM
	+1.4 36%	+24 26%	+41 17%	+10 7%	+22	+4.0 24%	+7.0 6%



Bringing the pairs home

50 NESSET LAKE CORTACHY BOY 34X

MALE IDM 34X 1575802 FEBRUARY 17 2010

ASHLEY EULAR
DUNLOUISE CORTACHY BOY D137 NHF AMF CAF 1486724
CHAMPAGNE CHERRY BEE B117

EROCO OF BANKHEAD
ASHLEY EULONA
ASHLEY ELMIGHTY
CHERRY BEE W9 OF CHAMPAGNE

CONNELY FREIGHTLINER NHF AMF CAF
NESSET LAKE LASS 3S 1326058
NESSET LAKE LASS IDM 12P

BON VIEW BANDO 598 AMF CAC
JOANA ERICA OF CONANGA
NESSET LAKE RITO 8K4 IDM 79M
NESSET LAKE LASS 3A

BW: 90 lbs. Adj. 205D: 689 lbs.
Sept. 16/10 Wt: 690 lbs. Jan. 9/11 Wt: 900 lbs.

EPDs	BW	WW	YW	MILK	TM	CE	CEM
	+1.9 35%	+29 26%	+45 17%	+9 6%	+24	+2.0 25%	+5.0 5%

Dam is a moderate framed Connealy Freightliner daughter.

52

NESSET LAKE BOND 50X

MALE IDM 50X 1575813 FEBRUARY 21 2010

WEDDERLIE EVICTOR
DUNLOUISE COMMANDER BOND NHF AMF CAF 1486721
CHAMPAGNE CHERRY BEE B117

NEWHOUSE EDWIN ELKO
EVISTA OF WEDDERLIE
ASHLEY ELMIGHTY
CHERRY BEE W9 OF CHAMPAGNE

BAR LU BANDOLIER 73'02
NESSET LAKE JUNE 9P 1195670
NESSET LAKE JUNE IDM 63M

LAZY J BANDOLIER 21G
BAR LU NEW DUCHESS 73H
NESSET LAKE SCOTCHCAP IDM 58K
NESSET LAKE JUNE 7D

BW: 86 lbs. Adj. 205D: 694 lbs.
Sept. 16/10 Wt: 700 lbs. Jan. 9/11 Wt: 1050 lbs.

EPDs	BW	WW	YW	MILK	TM	CE	CEM
	+1.1 35%	+28 25%	+37 11%	+7 6%	+21	+3.0 22%	+4.0 5%

These Scottish calves are all moderate birth weight, suitable for heifer bulls.

51 NESSET LAKE CORTACHY BOY 37X

MALE IDM 37X 1575804 FEBRUARY 18 2010

ASHLEY EULAR
DUNLOUISE CORTACHY BOY D137 NHF AMF CAF 1486724
CHAMPAGNE CHERRY BEE B117

EROCO OF BANKHEAD
ASHLEY EULONA
ASHLEY ELMIGHTY
CHERRY BEE W9 OF CHAMPAGNE

SANDY BAR BARDOLIER 82C
VALLEY BLOSSOM MS QUALITY 820L 1042267
SANDY BAR MISS QUALITY 70G

BJ BARDOLIER 24'90
SANDY BAR MISS QUALITY 11Y
BELVIN CHIEF
SANDY BAR MISS QUALITY 19U

BW: 86 lbs. Adj. 205D: 661 lbs.
Sept. 16/10 Wt: 675 lbs. Jan. 9/11 Wt: 930 lbs.

EPDs	BW	WW	YW	MILK	TM	CE	CEM
	+2.0 36%	+17 26%	+27 16%	+9 7%	+18	-1.0 23%	+1.0 5%



NESSET LAKE ANGUS

BLACK ANGUS BULL SALE



Dinner time

55

NESSET LAKE BOND 58X

MALE IDM 58X 1575815 FEBRUARY 23 2010

WEDDERLIE EVICTOR
DUNLOUISE COMMANDER BOND NHF AMF CAF 1486721
 CHAMPAGNE CHERRY BEE B117

NEWHOUSE EDWIN ELKO
 EVISTA OF WEDDERLIE
 ASHLEY ELMIGHTY
 CHERRY BEE W9 OF CHAMPAGNE

NESET LAKE RITO 8K4 IDM 79M
NESET LAKE LASS IDM 12P 1201844
 NESSET LAKE LASS 3A

RITO 8K4 OF 5028 RITO 3X25 NHF AMF
 NESSET LAKE ERICA 44H
 LEACHMAN NEW STYLE
 NESSET LAKE LASS 71X

BW: 94 lbs. Adj. 205D: 622 lbs.
 Sept. 16/10 Wt: 650 lbs. Jan. 9/11 Wt: 950 lbs.

EPDs	BW	WW	YW	MILK	TM	CE	CEM
	+2.3 35%	+19 25%	+20 11%	+8 7%	+18	+0.0 22%	+4.0 5%

53

NESSET LAKE BOND 7X

MALE IDM 7X 1575784 FEBRUARY 02 2010

WEDDERLIE EVICTOR
DUNLOUISE COMMANDER BOND NHF AMF CAF 1486721
 CHAMPAGNE CHERRY BEE B117

NEWHOUSE EDWIN ELKO
 EVISTA OF WEDDERLIE
 ASHLEY ELMIGHTY
 CHERRY BEE W9 OF CHAMPAGNE

KMA FOURTRAX 5134
KENOSEE PARK BLACKBIRD 2K 1015329
 KENOSEE PARK BLACKBIRD 89H

RITO 2RT2 OF 0B5 RR TRAVELER NHF AMF CAF
 KMA ERISKAY 8044
 KENOSEE PARK STOCKMAN 46B
 KENOSEE PARK BLACKBIRD 85C

BW: 78 lbs. Adj. 205D: 597 lbs.
 Sept. 16/10 Wt: 650 lbs. Jan. 9/11 Wt: 940 lbs.

EPDs	BW	WW	YW	MILK	TM	CE	CEM
	+1.1 36%	+20 26%	+29 10%	+6 7%	+16	+3.0 23%	+3.0 5%

Not too many 4 Trax daughters around.

56

NESSET LAKE BOND 29X

MALE IDM 29X 1575799 TWIN FEBRUARY 14 2010

WEDDERLIE EVICTOR
DUNLOUISE COMMANDER BOND NHF AMF CAF 1486721
 CHAMPAGNE CHERRY BEE B117

NEWHOUSE EDWIN ELKO
 EVISTA OF WEDDERLIE
 ASHLEY ELMIGHTY
 CHERRY BEE W9 OF CHAMPAGNE

CONNELLY TIMELINE CAF
NESET LAKE TIMELINE IDM 89M 1106539
 NESSET LAKE TRAVELER 31J

CONNELLY DATELINE
 ENCHANTS FORTUNE CONANGA 6127
 TC STOCKMAN 2164 AMF
 MINERS CREEK TRAVELER 16C

BW: 74 lbs. Adj. 205D: 571 lbs.
 Sept. 16/10 Wt: 620 lbs. Jan. 9/11 Wt: 920 lbs.

EPDs	BW	WW	YW	MILK	TM	CE	CEM
	+1.3 P	+21 P	+29 P	+8 P			

54

NESSET LAKE BOND 10X

MALE IDM 10X 1575787 FEBRUARY 02 2010

WEDDERLIE EVICTOR
DUNLOUISE COMMANDER BOND NHF AMF CAF 1486721
 CHAMPAGNE CHERRY BEE B117

NEWHOUSE EDWIN ELKO
 EVISTA OF WEDDERLIE
 ASHLEY ELMIGHTY
 CHERRY BEE W9 OF CHAMPAGNE

NESET LAKE SCOTCHCAP IDM 58K
NESET LAKE JUNE IDM 63M 1106482
 NESSET LAKE JUNE 7D

R R SCOTCHCAP 9440 NHF AMF
 NESSET LAKE ERICA 76C
 G T MAXIMUM NHF AMF CAF
 NESSET LAKE JUNE 73X

BW: 84 lbs. Adj. 205D: 552 lbs.
 Sept. 16/10 Wt: 600 lbs. Jan. 9/11 Wt: 900 lbs.

EPDs	BW	WW	YW	MILK	TM	CE	CEM
	+0.7 35%	+12 25%	+19 11%	+6 7%	+12	+5.0 22%	+7.0 5%

57

NESSET LAKE BOND 30X

MALE IDM 30X 1575800 TWIN FEBRUARY 14 2010

WEDDERLIE EVICTOR
DUNLOUISE COMMANDER BOND NHF AMF CAF 1486721
 CHAMPAGNE CHERRY BEE B117

NEWHOUSE EDWIN ELKO
 EVISTA OF WEDDERLIE
 ASHLEY ELMIGHTY
 CHERRY BEE W9 OF CHAMPAGNE

CONNELLY TIMELINE CAF
NESET LAKE TIMELINE IDM 89M 1106539
 NESSET LAKE TRAVELER 31J

CONNELLY DATELINE
 ENCHANTS FORTUNE CONANGA 6127
 TC STOCKMAN 2164 AMF
 MINERS CREEK TRAVELER 16C

BW: 78 lbs. Adj. 205D: 645 lbs.
 Sept. 16/10 Wt: 670 lbs. Jan. 9/11 Wt: 960 lbs.

EPDs	BW	WW	YW	MILK	TM	CE	CEM
	+1.3 P	+21 P	+29 P	+8 P			

NESSET LAKE ANGUS

BLACK ANGUS BULL SALE

58

NESSET LAKE BOND 78X

MALE IDM 78X 1596266 MARCH 01 2010

WEDDERLIE EVICTOR
DUNLOUSE COMMANDER BOND NHF AMF CAF 1486721
 CHAMPAGNE CHERRY BEE B117

NEWHOUSE EDWIN ELKO
 EVISTA OF WEDDERLIE
 ASHLEY ELMIGHTY
 CHERRY BEE W9 OF CHAMPAGNE

MINBURN MAIN EVENT 126P
NESSET LAKE ERICA 94S 1355746
 NESSET LAKE ERICA 44H

CRESCENT CREEK MAIN EVENT 6H
 MINBURN BLACKBIRD 163K
 LEACHMAN RIGHT TIME AMF
 NESSET LAKE ERICA 78F

BW: 78 lbs.
 Sept. 16/10 Wt: 550 lbs. Jan. 9/11 Wt: 850 lbs.



59

NESSET LAKE TOTAL 1X

MALE LACE 1X 1575780 JANUARY 21 2010

K C F BENNETT TOTAL NHF AMF CAF
LODGE TOTAL 15U 1457170
 LODGE COUNTESS 62R

SITZ ALLIANCE 6595 NHF AMF
 EXT OF CONANGA 6790
 F A R KRUGERRAND 410H NHF AMF CAF
 LODGE COUNTESS 2J

NESSET LAKE SCOTCHCAP IDM 58K
NESSET LAKE ERICA IDM 111M 1106549
 NESSET LAKE ERICA IDM 42K

R R SCOTCHCAP 9440 NHF AMF
 NESSET LAKE ERICA 76C
 NESSET LAKE TRAVELER 8F
 NESSET LAKE ERICA 44H

BW: 92 lbs. Adj. 205D: 691 lbs.
 Sept. 16/10 Wt: 820 lbs. Jan. 9/11 Wt: 1100 lbs.

EPDs	BW	WW	YW	MILK	TM	CE	CEM
	+2.2 32%	+48 20%	+87 11%	+20 10%	+44	+3.0 21%	+6.0 7%

The dam of this bull is also the dam of Lots 38, 39, 40 & 41.

61

NESSET LAKE TOTAL 76X

MALE IDM 76X 1575824 FEBRUARY 28 2010

K C F BENNETT TOTAL NHF AMF CAF
LODGE TOTAL 15U 1457170
 LODGE COUNTESS 62R

SITZ ALLIANCE 6595 NHF AMF
 EXT OF CONANGA 6790
 F A R KRUGERRAND 410H NHF AMF CAF
 LODGE COUNTESS 2J

NESSET LAKE STOCKMAN IDM 60L
NESSET LAKE VAL 104R 1253302
 NESSET LAKE VAL IDM 83L

TC STOCKMAN 2164 AMF
 NESSET LAKE ERICA 44H
 W P R 3J DIVIDEND 9321
 NESSET LAKE VAL 9F

BW: 88 lbs. Adj. 205D: 685 lbs.
 Sept. 16/10 Wt: 670 lbs. Jan. 9/11 Wt: 950 lbs.

EPDs	BW	WW	YW	MILK	TM	CE	CEM
	+2.3 33%	+44 21%	+82 11%	+18 11%	+40	+3.0 21%	+5.0 8%

60

NESSET LAKE TOTAL 36X

MALE JLD 36X 1575803 FEBRUARY 18 2010

K C F BENNETT TOTAL NHF AMF CAF
LODGE TOTAL 15U 1457170
 LODGE COUNTESS 62R

SITZ ALLIANCE 6595 NHF AMF
 EXT OF CONANGA 6790
 F A R KRUGERRAND 410H NHF AMF CAF
 LODGE COUNTESS 2J

NESSET LAKE STOCKMAN IDM 60L
NESSET LAKE JESTRESS 64P 1196179
 ANDERS JESTRESS 30K

TC STOCKMAN 2164 AMF
 NESSET LAKE ERICA 44H
 EVERBLACK MASTERMAN 25E
 ANDERS JESTRESS 27F

BW: 94 lbs. Adj. 205D: 656 lbs.
 Sept. 16/10 Wt: 700 lbs. Jan. 9/11 Wt: 1000 lbs.

EPDs	BW	WW	YW	MILK	TM	CE	CEM
	+2.9 33%	+47 21%	+82 11%	+15 11%	+39	+0.0 21%	+3.0 7%

62

NESSET LAKE TOTAL 65X

MALE IDM 65X 1575819 FEBRUARY 24 2010

K C F BENNETT TOTAL NHF AMF CAF
LODGE TOTAL 15U 1457170
 LODGE COUNTESS 62R

SITZ ALLIANCE 6595 NHF AMF
 EXT OF CONANGA 6790
 F A R KRUGERRAND 410H NHF AMF CAF
 LODGE COUNTESS 2J

BAR LU BANDOLIER 73'02
NESSET LAKE VAL 97R 1253304
 NESSET LAKE VAL IDM 11M

LAZY J BANDOLIER 21G
 BAR LU NEW DUCHESS 73H
 TC STOCKMAN 2164 AMF
 NESSET LAKE VAL 44J

BW: 88 lbs. Adj. 205D: 643 lbs.
 Sept. 16/10 Wt: 640 lbs. Jan. 9/11 Wt: 890 lbs.

EPDs	BW	WW	YW	MILK	TM	CE	CEM
	+2.5 33%	+42 21%	+79 11%	+17 11%	+38	+3.0 21%	+6.0 8%

NESSET LAKE ANGUS

BLACK ANGUS BULL SALE



Lot 65

64

NESSET LAKE FORTE 96X

MALE IDM 96X 1575838 MARCH 05 2010

BAD LANDS FORTE 5S
GBT FORTE 861 1457541
 HOLLBROOK SOCIALITE 48K

TC STOCKMAN 2164 AMF
NESSET LAKE LASS 6N 1154913
 NESSET LAKE LASS 26G

PAPA FORTE 1921
 BAD LANDS PRINCESS 63K
 WAVENY ULTRA 16F
 HOLLBROOK SOCIALITE 3H

TC STOCKMAN
 TC RUBY 5087
 NESSET LAKE RAINMAKER 1Z
 NESSET LAKE LASS 3A

BW: 90 lbs. Adj. 205D: 694 lbs.
 Sept. 16/10 Wt: 665 lbs.

EPDs	BW	WW	YW	MILK	TM	CE	CEM
	+3.0 34%	+37 22%	+58 12%	+20 10%	+39	+2.0 21%	+6.0 7%

63

NESSET LAKE FORTE 87X

MALE JLD 87X 1575831 MARCH 03 2010

BAD LANDS FORTE 5S
GBT FORTE 861 1457541
 HOLLBROOK SOCIALITE 48K

BAR LU BANDOLIER 73'02
NESSET LAKE BLACK VELVET 4P 1196176
 NESSET LAKE BLACK VELVET 17M

PAPA FORTE 1921
 BAD LANDS PRINCESS 63K
 WAVENY ULTRA 16F
 HOLLBROOK SOCIALITE 3H

LAZY J BANDOLIER 21G
 BAR LU NEW DUCHESS 73H
 W P R 3J DIVIDEND 9321
 MGA BLACK VELVET 29K

BW: 92 lbs. Adj. 205D: 731 lbs.
 Sept. 16/10 Wt: 740 lbs. Jan. 9/11 Wt: 1080 lbs.

EPDs	BW	WW	YW	MILK	TM	CE	CEM
	+3.7 33%	+48 21%	+77 11%	+19 9%	+43	+0.0 21%	+4.0 5%

65

NESSET LAKE FORTE 66X

MALE IDM 66X 1575820 FEBRUARY 25 2010

BAD LANDS FORTE 5S
GBT FORTE 861 1457541
 HOLLBROOK SOCIALITE 48K

TC STOCKMAN 2164 AMF
NESSET LAKE ERICA 57N 1154898
 NESSET LAKE ERICA 44H

PAPA FORTE 1921
 BAD LANDS PRINCESS 63K
 WAVENY ULTRA 16F
 HOLLBROOK SOCIALITE 3H

TC STOCKMAN
 TC RUBY 5087
 LEACHMAN RIGHT TIME AMF
 NESSET LAKE ERICA 78F

BW: 98 lbs. Adj. 205D: 706 lbs.
 Sept. 16/10 Wt: 700 lbs. Jan. 9/11 Wt: 1060 lbs.

EPDs	BW	WW	YW	MILK	TM	CE	CEM
	+5.8 33%	+47 22%	+80 12%	+16 10%	+40	-5.0 21%	+2.0 8%



Just a quick trim

66

NESSET LAKE FORTE 61X

MALE IDM 61X 1575818 TW FEBRUARY 24 2010

BAD LANDS FORTE 5S
GBT FORTE 861 1457541
 HOLLBROOK SOCIALITE 48K

TC STOCKMAN 2164 AMF
NESSET LAKE ERIKA IDM 52L 1074937
 NESSET LAKE ERIKA 76C

PAPA FORTE 1921
 BAD LANDS PRINCESS 63K
 WAVENY ULTRA 16F
 HOLLBROOK SOCIALITE 3H

TC STOCKMAN
 TC RUBY 5087
 NESSET LAKE RAINMAKER 1Z
 NESSET LAKE ERIKA 2A

BW: 88 lbs. Adj. 205D: 683 lbs.
 Sept. 16/10 Wt: 680 lbs. Jan. 9/11 Wt: 1030 lbs.

EPDs	BW	WW	YW	MILK	TM	CE	CEM
	+4.3 P	+42 P	+70 P	+21 P			

NESSET LAKE ANGUS

BLACK ANGUS BULL SALE

67

NESSET LAKE TOTAL 83X

MALE IDM 83X 1575828 MARCH 02 2010

BAD LANDS FORTE 5S
GBT FORTE 861 1457541
 HOLLBROOK SOCIALITE 48K

PAPA FORTE 1921
 BAD LANDS PRINCESS 63K
 WAVENY ULTRA 16F
 HOLLBROOK SOCIALITE 3H

W P R 3J DIVIDEND 9321
NESSET LAKE VAL IDM 83L 1074958
 NESSET LAKE VAL 9F

TC DIVIDEND 963 NHF AMF
 J A S MISS LUCY J928
 LEACHMAN NEW STYLE
 NESSET LAKE VAL 1A

BW: 92 lbs. Adj. 205D: 721 lbs.
 Sept. 16/10 Wt: 700 lbs. Jan. 9/11 Wt: 1020 lbs.

EPDs	BW	WW	YW	MILK	TM	CE	CEM
	+2.8 34%	+38 22%	+66 12%	+21 10%	+40	+3.0 22%	+4.0 7%



Lot 70

68

NESSET LAKE FORTE 82X

MALE JLD 82X 1575827 MARCH 02 2010

BAD LANDS FORTE 5S
GBT FORTE 861 1457541
 HOLLBROOK SOCIALITE 48K

PAPA FORTE 1921
 BAD LANDS PRINCESS 63K
 WAVENY ULTRA 16F
 HOLLBROOK SOCIALITE 3H

EVERBLACK MASTERMAN 25E
ANDERS JESTRESS 30K 1027040
 ANDERS JESTRESS 27F

JAY EN DEE MASTERPLAN 3
 EVERBLACK ESTHER 68T
 DOUBLE AA BARDOLIER 532'93
 ANGUS ACRES JESTRESS 0155B

BW: 96 lbs. Adj. 205D: 610 lbs.
 Sept. 16/10 Wt: 620 lbs. Jan. 9/11 Wt: 950 lbs.

EPDs	BW	WW	YW	MILK	TM	CE	CEM
	+3.6 34%	+31 22%	+50 10%	+13 10%	+29	-2.0 21%	+1.0 6%

70

NESSET LAKE WINDY 55X

MALE IDM 55X 1595134 FEBRUARY 23 2010

A A R REALLY WINDY 1205 NHF AMF CAF
NESSET LAKE WINDY 20T 1393017
 ANDERS IRIS 37J

A A R WINDY RIDGE 362
 A A R LADY KELTON 2170
 WIWA CREEK TREND 51'93
 WAVENY ROSEBUD 131Z

CONNELY THUNDER NHF AMF CAF
NESSET LAKE LASS 15U 1441702
 NESSET LAKE LASS 31S

BALDRIDGE KABOOM K243 KCF
 PARKA OF CONANGA 241 NHF AMF
 CONNEALY FREIGHTLINER NHF AMF CAF
 NESSET LAKE LASS 26G

BW: 85 lbs.
 Sept. 16/10 Wt: 755 lbs. Jan. 9/11 Wt: 1000 lbs.

EPDs	BW	WW	YW	MILK	TM	CE	CEM
	+1.1 P+	+39 P+	+72 P	+18 P			

Really good bull off a first calf heifer.

69

NESSET LAKE FORTE 94X

MALE IDM 94X 1575836 MARCH 04 2010

BAD LANDS FORTE 5S
GBT FORTE 861 1457541
 HOLLBROOK SOCIALITE 48K

PAPA FORTE 1921
 BAD LANDS PRINCESS 63K
 WAVENY ULTRA 16F
 HOLLBROOK SOCIALITE 3H

TC STOCKMAN 2164 AMF
NESSET LAKE JUNE IDM 14L 1074939
 NESSET LAKE JUNE 7D

TC STOCKMAN
 TC RUBY 5087
 G T MAXIMUM NHF AMF CAF
 NESSET LAKE JUNE 73X

BW: 82 lbs. Adj. 205D: 676 lbs.
 Sept. 16/10 Wt: 650 lbs. Jan. 9/11 Wt: 950 lbs.

EPDs	BW	WW	YW	MILK	TM	CE	CEM
	+2.6 33%	+41 22%	+75 12%	+11 10%	+32	+4.0 21%	+7.0 8%

71

NESSET LAKE WINDY 26X

MALE IDM 26X 1575796 FEBRUARY 10 2010

A A R REALLY WINDY 1205 NHF AMF CAF
NESSET LAKE WINDY 20T 1393017
 ANDERS IRIS 37J

A A R WINDY RIDGE 362
 A A R LADY KELTON 2170
 WIWA CREEK TREND 51'93
 WAVENY ROSEBUD 131Z

MINBURN MAIN EVENT 126P
NESSET LAKE TIP TOP 35T 1393075
 NESSET LAKE TIP TOP 25P

CRESCENT CREEK MAIN EVENT 6H
 MINBURN BLACKBIRD 163K
 NESSET LAKE STOCKMAN IDM 60L
 NESSET LAKE TIP TOP 5L

BW: 76 lbs. Adj. 205D: 628 lbs.
 Sept. 16/10 Wt: 650 lbs. Jan. 9/11 Wt: 950 lbs.

EPDs	BW	WW	YW	MILK	TM	CE	CEM
	-1.8 33%	+39 22%	+73 13%	+9 10%	+29	+11.0 22%	+9.0 7%

NESSET LAKE ANGUS

BLACK ANGUS BULL SALE



Lot 73

73

NESSET LAKE WINDY 57X

MALE IDM 57X 1575817 FEBRUARY 23 2010

A A R REALLY WINDY 1205 NHF AMF CAF
NESSET LAKE WINDY 20T 1393017
 ANDERS IRIS 37J

A A R WINDY RIDGE 362
 A A R LADY KELTON 2170
 WIWA CREEK TREND 51'93
 WAVENY ROSEBUD 131Z

BAR LU BANDOLIER 73'02
NESSET LAKE JUNE 118T 1393010
 NESSET LAKE JUNE 72G

LAZY J BANDOLIER 21G
 BAR LU NEW DUCHESS 73H
 NESSET LAKE EXTREME 53E
 NESSET LAKE JUNE 7D

BW: 88 lbs. Adj. 205D: 678 lbs.
 Sept. 16/10 Wt: 640 lbs. Jan. 9/11 Wt: 850 lbs.

EPDs	BW	WW	YW	MILK	TM	CE	CEM
	+2.3 33%	+38 22%	+68 13%	+11 10%	+30	+2.0 22%	+1.0 8%

72

NESSET LAKE WINDY 91X

MALE IDM 91X 1575834 MARCH 03 2010

A A R REALLY WINDY 1205 NHF AMF CAF
NESSET LAKE WINDY 20T 1393017
 ANDERS IRIS 37J

A A R WINDY RIDGE 362
 A A R LADY KELTON 2170
 WIWA CREEK TREND 51'93
 WAVENY ROSEBUD 131Z

L T 598 BANDO 9074 NHF AMF CAF
NESSET LAKE ERICA 30T 1393019
 NESSET LAKE ERICA 105J

S A F 598 BANDO 5175 AMF CAC
 MILL COULEE BARBARA K 323
 HILOW SUPER SYSTEMS 11D
 NESSET LAKE ERICA 4G

BW: 87 lbs. Adj. 205D: 660 lbs.
 Sept. 16/10 Wt: 630 lbs. Jan. 9/11 Wt: 900 lbs.

EPDs	BW	WW	YW	MILK	TM	CE	CEM
	+1.1 33%	+36 22%	+70 14%	+17 11%	+35	+6.0 23%	+3.0 9%

74

NESSET LAKE FINAL ANSWER 115X

MALE IDM 115X 1575845 MARCH 10 2010

S A V FINAL ANSWER 0035 NHF AMF CAF
MFA FINAL ANSWER 24U 1435070
 MFA PRINCESS 92S

SITZ TRAVELER 8180 NHF AMF CAF
 S A V EMULOUS 8145
 MFA TIMELINE 69M
 MFA PRINCESS 114M

NESSET LAKE SCOTCHCAP IDM 58K
NESSET LAKE KARAMA IDM 116M 1106558
 NESSET LAKE KARAMA IDM 76K

R R SCOTCHCAP 9440 NHF AMF
 NESSET LAKE ERICA 76C
 NEW FORCE END ZONE 80H
 CALLAMERE KARAMA 5F

BW: 89 lbs. Adj. 205D: 722 lbs.
 Sept. 16/10 Wt: 710 lbs. Jan. 9/11 Wt: 920 lbs.

EPDs	BW	WW	YW	MILK	TM	CE	CEM
	+1.1 33%	+49 21%	+82 12%	+23 11%	+48	+6.0 22%	+9.0 8%



On duty

75

NESSET LAKE FINAL ANSWER 110X

MALE IDM 110X 1575841 MARCH 09 2010

S A V FINAL ANSWER 0035 NHF AMF CAF
MFA FINAL ANSWER 24U 1435070
 MFA PRINCESS 92S

SITZ TRAVELER 8180 NHF AMF CAF
 S A V EMULOUS 8145
 MFA TIMELINE 69M
 MFA PRINCESS 114M

NESSET LAKE SCOTCHCAP IDM 58K
NESSET LAKE RAIN IDM 126M 1106521
 NESSET LAKE RAIN 33G

R R SCOTCHCAP 9440 NHF AMF
 NESSET LAKE ERICA 76C
 NESSET LAKE RAINMAKER 1Z
 MINERS CREEK TRAVELER 10C

BW: 81 lbs. Adj. 205D: 697 lbs.
 Sept. 16/10 Wt: 655 lbs. Jan. 9/11 Wt: 930 lbs.

EPDs	BW	WW	YW	MILK	TM	CE	CEM
	-0.9 32%	+41 20%	+71 10%	+20 11%	+41	+9.0 21%	+8.0 8%

NESSET LAKE ANGUS

BLACK ANGUS BULL SALE



Lot 76



Lot 78

76 NESSET LAKE FINAL ANSWER 109X

MALE IDM 109X 1575840 MARCH 09 2010

S A V FINAL ANSWER 0035 NHF AMF CAF
MFA FINAL ANSWER 24U 1435070
 MFA PRINCESS 92S

SITZ TRAVELER 8180 NHF AMF CAF
 S A V EMULOUS 8145
 MFA TIMELINE 69M
 MFA PRINCESS 114M

A A R REALLY WINDY 1205 NHF AMF CAF
NESSET LAKE KARMARA 11S 1326078
 NESSET LAKE KARMARA 45P

A A R WINDY RIDGE 362
 A A R LADY KELTON 2170
 BAR LU BANDOLIER 73'02
 NESSET LAKE KARMARA IDM 14M

BW: 82 lbs. Adj. 205D: 708 lbs.
 Sept. 16/10 Wt: 650 lbs. Jan. 9/11 Wt: 900 lbs.

EPDs	BW	WW	YW	MILK	TM	CE	CEM
	-0.8 33%	+46 21%	+83 12%	+22 11%	+45	+11.0 23%	+8.0 9%

78 NESSET LAKE FREIGHTLINER 113X

MALE IDM 113X 1575843 MARCH 10 2010

CONNELLY FREIGHTLINER NHF AMF CAF
NESSET LAKE FREIGHTLINER 17U 1480796
 NESSET LAKE ERICA 76C

BON VIEW BANDO 598 AMF CAC
 JOANA ERICA OF CONANGA
 NESSET LAKE RAINMAKER 1Z
 NESSET LAKE ERICA 2A

NESSET LAKE RITO 8K4 IDM 79M
NESSET LAKE BEAUTY LASS 30P 1237385
 NESSET LAKE BEAUTY IDM 1K

RITO 8K4 OF 5028 RITO 3X25 NHF AMF
 NESSET LAKE ERICA 44H
 S A F FAME NHF AMF CAF
 BELL BEAUTY LASS 16H

BW: 88 lbs. Adj. 205D: 786 lbs.
 Sept. 16/10 Wt: 735 lbs. Jan. 9/11 Wt: 1030 lbs.

EPDs	BW	WW	YW	MILK	TM	CE	CEM
	+2.2 32%	+52 21%	+83 10%	+16 11%	+42	+2.0 21%	+6.0 9%

77 NESSET LAKE FINAL ANSWER 120X

MALE IDM 120X 1575849 MARCH 12 2010

S A V FINAL ANSWER 0035 NHF AMF CAF
MFA FINAL ANSWER 24U 1435070
 MFA PRINCESS 92S

SITZ TRAVELER 8180 NHF AMF CAF
 S A V EMULOUS 8145
 MFA TIMELINE 69M
 MFA PRINCESS 114M

NESSET LAKE EXTREME 53E
NESSET LAKE JUNE 72G 910190
 NESSET LAKE JUNE 7D

MR EXTREME OF ANGUS RIDGE 1A
 NESSET LAKE ERICA 76C
 G T MAXIMUM NHF AMF CAF
 NESSET LAKE JUNE 73X

BW: 84 lbs. Adj. 205D: 728 lbs.
 Sept. 16/10 Wt: 550 lbs. Jan. 9/11 Wt: 910 lbs.

EPDs	BW	WW	YW	MILK	TM	CE	CEM
	+0.0 34%	+40 22%	+72 12%	+15 12%	+35	+7.0 22%	+7.0 9%

79 NESSET LAKE FREIGHTLINER 118X

MALE IDM 118X 1575848 MARCH 12 2010

CONNELLY FREIGHTLINER NHF AMF CAF
NESSET LAKE FREIGHTLINER 17U 1480796
 NESSET LAKE ERICA 76C

BON VIEW BANDO 598 AMF CAC
 JOANA ERICA OF CONANGA
 NESSET LAKE RAINMAKER 1Z
 NESSET LAKE ERICA 2A

NESSET LAKE STOCKMAN IDM 60L
NESSET LAKE LOIS 69S 1325869
 B.B.A.R. QUEEN LOIS 38K

TC STOCKMAN 2164 AMF
 NESSET LAKE ERICA 44H
 B.B.A.R. ROYCE 24G
 KBJ QUEEN LOIS 318E

BW: 97 lbs. Adj. 205D: 661 lbs.
 Sept. 16/10 Wt: 600 lbs. Jan. 9/11 Wt: 930 lbs.

EPDs	BW	WW	YW	MILK	TM	CE	CEM
	+3.2 32%	+39 20%	+67 9%	+17 11%	+37	+0.0 20%	+3.0 8%

NESSET LAKE ANGUS

BLACK ANGUS BULL SALE



81

NESSET LAKE HICK HOP 56X

MALE IDM 56X 1582158 FEBRUARY 23 2010

BLACK WHEEL HICK HOP 49R
DOUBLE AA HICK HOP 47'07 1389662
 DOUBLE AA ANNIE K 289'02

ROTH REGULATOR 0405
 FCR LUCILLE 40K
 DOUBLE AA RITO 206'97
 DOUBLE AA ANNIE K 534'92

DOUBLE AA RITO 21'03
DOUBLE AA ERICA 221'06 1329787
 DOUBLE AA ERICA 522'03

DOUBLE AA RITO 206'97
 DOUBLE AA ANNIE K 275'97
 DOUBLE AA BARDOLIER 515'99
 DOUBLE AA ERICA 296'97

BW: 94 lbs. Adj. 205D: 656 lbs.
 Sept. 16/10 Wt: 640 lbs. Jan. 9/11 Wt: 960 lbs.

EPDs	BW	WW	YW	MILK	TM	CE	CEM
	+5.9 29%	+40 16%	+71 5%	+8 6%	+28	-9.0 18%	-2.0 5%

From the Double A herd.

80

NESSET LAKE FREIGHTLINER 162X

MALE IDM 162X 1575872 APRIL 01 2010

CONNEALY FREIGHTLINER NHF AMF CAF
NESSET LAKE FREIGHTLINER 17U 1480796
 NESSET LAKE ERICA 76C

BON VIEW BANDO 598 AMF CAC
 JOANA ERICA OF CONANGA
 NESSET LAKE RAINMAKER 1Z
 NESSET LAKE ERICA 2A

SITZ ALLIANCE 6595 NHF AMF
NU WAVE SITZ 130N 1159307
 NU WAVE ROSEBUD OF 5 13L

SITZ TRAVELER 8180 NHF AMF CAF
 SITZ BARBARAMERE JET 2698
 SUMMITCREST HI FLYER 3B18 NHF AMF
 CAF
 NU WAVE ROSEBUD 3J

BW: 87 lbs. Adj. 205D: 774 lbs.
 Sept. 16/10 Wt: 650 lbs. Jan. 9/11 Wt: 900 lbs.

EPDs	BW	WW	YW	MILK	TM	CE	CEM
	+1.0 32%	+45 21%	+77 10%	+22 12%	+45	+5.0 22%	+7.0 9%

82

NESSET LAKE HICK HOP 69X

MALE IDM 69X 1575822 FEBRUARY 26 2010

BLACK WHEEL HICK HOP 49R
DOUBLE AA HICK HOP 47'07 1389662
 DOUBLE AA ANNIE K 289'02

ROTH REGULATOR 0405
 FCR LUCILLE 40K
 DOUBLE AA RITO 206'97
 DOUBLE AA ANNIE K 534'92

DOUBLE AA BARDOLIER 550'00
DOUBLE AA ANNIE K 263'06 1329727
 DOUBLE AA ANNIE K 214'03

DOUBLE AA BARDOLIER 505'97
 DOUBLE AA ANNIE K 64'94
 DOUBLE AA BARDOLIER 13'98
 DOUBLE AA ANNIE K 39'98

BW: 100 lbs. Adj. 205D: 684 lbs.
 Sept. 16/10 Wt: 660 lbs. Jan. 9/11 Wt: 930 lbs.

EPDs	BW	WW	YW	MILK	TM	CE	CEM
	+5.7 29%	+33 17%	+61 5%	+13 6%	+30	-10.0 18%	-2.0 5%



All in a day's work

83

NESSET LAKE BARDOLENE 117X

MALE IDM 117X 1575847 MARCH 12 2010

SASKALTA BARDOLENE 28M
DOUBLE AA BARDOLENE 803'07 1389668
 DOUBLE AA ANNIE K 808'02

SASKALTA BARDOLENE 182H
 SASKALTA EDNA 780G
 DOUBLE AA BLACKMAN 252'96
 DOUBLE AA ANNIE K 271'95

DOUBLE AA BARDOLIER 322'03
SASKALTA ANNIE K 711T 1433491
 DOUBLE AA ANNIE K 513'01

DOUBLE AA BARDOLIER 550'00
 DOUBLE AA ANNIE K 674'99
 DOUBLE AA RITO 206'97
 DOUBLE AA ANNIE K 41'97

BW: 94 lbs. Adj. 205D: 653 lbs.
 Sept. 16/10 Wt: 600 lbs. Jan. 9/11 Wt: 950 lbs.

EPDs	BW	WW	YW	MILK	TM	CE	CEM
	+4.4 28%	+34 16%	+59 5%	+7 7%	+24	-5.0 18%	+1.0 5%

NESSET LAKE ANGUS

BLACK ANGUS BULL SALE

Two Year Old Bulls

84 NESSET LAKE EMBLAZON IDM 135W

MALE IDM 135W 1594101 ET APRIL 08 2009

D H D TRAVELER 6807 NHF AMF
O C C EMBLAZON 854E NHF AMF CAF 1541351
DIXIE ERICA OF C H 1019

Q A S TRAVELER 23-4 NHF AMF CAF
BEMINDFUL MAID D H D 0807
PBC 707 1M F0203
DIXIE ERICA OF C H 615

STEVENSON ROLLING THUNDER NHF CAF
STEVENSON LADY 8760 1537622
STEVENSON LADY 305H

G D A R RAINMAKER 340
AHLGRENS ESTELLA 2758 E T E
MGR 604G OF PARTNER
STEVENSON LADY 753E

BW: 78 lbs.
WW: 710 lbs. Jan. 30/11 Wt: 1700 lbs.

EPDs	BW	WW	YW	MILK	TM	CE	CEM
	+0.3 P	+43 P	+74 P	+19 P	+40	+10.0 P	+5.5 P



Lot 84

85 NESSET LAKE EMBLAZON IDM 140W

MALE IDM 140W 1594099 ET APRIL 11 2009

D H D TRAVELER 6807 NHF AMF
O C C EMBLAZON 854E NHF AMF CAF 1541351
DIXIE ERICA OF C H 1019

Q A S TRAVELER 23-4 NHF AMF CAF
BEMINDFUL MAID D H D 0807
PBC 707 1M F0203
DIXIE ERICA OF C H 615

STEVENSON ROLLING THUNDER NHF CAF
STEVENSON LADY 8760 1537622
STEVENSON LADY 305H

G D A R RAINMAKER 340
AHLGRENS ESTELLA 2758 E T E
MGR 604G OF PARTNER
STEVENSON LADY 753E

BW: 82 lbs.
WW: 610 lbs. Jan. 30/11 Wt: 1575 lbs.

EPDs	BW	WW	YW	MILK	TM	CE	CEM
	+0.3 P	+43 P	+74 P	+19 P	+40	+10.0 P	+5.5 P

Lot 85, 86 and 87 are all sons of Stevenson Lady 8760, Lot 37 in this sale.



Lot 85

86 NESSET LAKE EMBLAZON IDM 142W

MALE IDM 142W 1594098 ET APRIL 12 2009

D H D TRAVELER 6807 NHF AMF
O C C EMBLAZON 854E NHF AMF CAF 1541351
DIXIE ERICA OF C H 1019

Q A S TRAVELER 23-4 NHF AMF CAF
BEMINDFUL MAID D H D 0807
PBC 707 1M F0203
DIXIE ERICA OF C H 615

STEVENSON ROLLING THUNDER NHF CAF
STEVENSON LADY 8760 1537622
STEVENSON LADY 305H

G D A R RAINMAKER 340
AHLGRENS ESTELLA 2758 E T E
MGR 604G OF PARTNER
STEVENSON LADY 753E

BW: 86 lbs.
WW: 630 lbs. Jan. 30/11 Wt: 1750 lbs.

EPDs	BW	WW	YW	MILK	TM	CE	CEM
	+0.3 P	+43 P	+74 P	+19 P	+40	+10.0 P	+5.5 P



Lot 86

NESSET LAKE ANGUS

BLACK ANGUS BULL SALE



Stevenson Lady 8760 - Dam of Lots 84, 85 & 86

88 NESSET LAKE MAIN EVENT 162W

MALE IDM 162W 1510125 JUNE 06 2009

CRESCENT CREEK MAIN EVENT 6H
MINBURN MAIN EVENT 126P 1242304
 MINBURN BLACKBIRD 163K

STEVENS FORTUNE 425C NHF AMF CAF
 CRESCENT CREEK ROSEBUD 115F
 DOUBLE AA BARDOLIER 532'93
 MINBURN BLACKBIRD 73F

NESSET LAKE STOCKMAN IDM 60L
NESSET LAKE TIP TOP 25P 1201852
 NESSET LAKE TIP TOP 5L

TC STOCKMAN 2164 AMF
 NESSET LAKE ERICA 44H
 ALBERDA TRAVELER 416 NHF AMF CAF
 ANDERS TIPTOP 17D

BW: 88 lbs. Adj. 205D: 871 lbs.
 Jan. 30/11 Wt: 1650 lbs.

EPDs	BW	WW	YW	MILK	TM	CE	CEM
	+1.4 33%	+55 22%	+89 14%	+9 13%	+37	+4.0 21%	+9.0 8%

87 NESSET LAKE MAIN EVENT 154W

MALE IDM 154W 1510121 MAY 07 2009

CRESCENT CREEK MAIN EVENT 6H
MINBURN MAIN EVENT 126P 1242304
 MINBURN BLACKBIRD 163K

STEVENS FORTUNE 425C NHF AMF CAF
 CRESCENT CREEK ROSEBUD 115F
 DOUBLE AA BARDOLIER 532'93
 MINBURN BLACKBIRD 73F

HILOW SUPER SYSTEMS 11D
NESSET LAKE ERICA IDM 108K 1022713
 NESSET LAKE ERICA 76C

NICHOLS SUPER SYSTEMS R43
 HILOW LADY 6X
 NESSET LAKE RAINMAKER 1Z
 NESSET LAKE ERICA 2A

BW: 84 lbs. Adj. 205D: 654 lbs.
 Jan. 30/11 Wt: 1400 lbs.

EPDs	BW	WW	YW	MILK	TM	CE	CEM
	+1.3 33%	+29 22%	+54 13%	+10 13%	+25	+4.0 21%	+8.0 8%

89 NESSET LAKE SUPER SYSTEMS 157W

MALE IDM 157W 1510123 MAY 17 2009

NICHOLS SUPER SYSTEMS R43
HILOW SUPER SYSTEMS 12S 1317115
 HILOW ESTON ANNE 50H

F NICHOLS PROMISE N5
 NICHOLS LULA N9
 HILOW RIGHT TIME 38F
 HILOW ESTON ANNE 44D

SITZ ALLIANCE 6595 NHF AMF
NU WAVE SITZE 130N 1159307
 NU WAVE ROSEBUD OF 5 13L

SITZ TRAVELER 8180 NHF AMF CAF
 SITZ BARBARAMERE JET 2698
 SUMMITCREST HI FLYER 3B18 NHF AMF CAF
 NU WAVE ROSEBUD 3J

BW: 86 lbs. Adj. 205D: 797 lbs.
 Jan. 30/11 Wt: 1700 lbs.

EPDs	BW	WW	YW	MILK	TM	CE	CEM
	+0.9 32%	+39 22%	+68 13%	+14 12%	+34	+5.0 22%	+5.0 9%



Clipping time

90 NESSET LAKE WIDESPREAD 147W

MALE IDM 147W 1539516 APRIL 17 2009

WHITSTONE WIDESPREAD MB NHF AMF
NEW FORCE WIDESPREAD 94T 1384629
 NEW FORCE MISS LARK LEE 94N

N BAR EMULATION EXT NHF AMF CAF
 M B RACHEL 2173
 S A F 598 BANDO 5175 AMF CAC
 NEW FORCE MISS LARK 82F

CONNELLY ONWARD NHF AMF CAF
NEW FORCE RUBY 10T 1384758
 SKY HIGH RUBY 1K

CONNELLY LEAD ON NHF AMF CAF
 ALTUNE OF CONANGA 6104
 LINWOOD FAME 3H
 LINWOOD RUBY 21G

BW: 81 lbs. Adj. 205D: 756 lbs.
 Jan. 30/11 Wt: 1550 lbs.

EPDs	BW	WW	YW	MILK	TM	CE	CEM
	+2.5 32%	+41 21%	+79 9%	+17 11%	+38	+6.0 22%	+8.0 9%

NESSET LAKE ANGUS

BLACK ANGUS FEMALES

Yearling Heifers

Selling Choice

Lot 91 or Lot 92

91

NESSET LAKE KARAMA 8X

FEMALE IDM 8X 1575785 FEBRUARY 02 2010

SITZ TRAVELER 8180 NHF AMF CAF
S A V FINAL ANSWER 0035 NHF AMF CAF 1061938
 S A V EMULOUS 8145

G D A R TRAVELER 71 NHF AMF CAF
 SITZ EVERELDA ENTENSE 1137
 BON VIEW BANDO 598 AMF CAC
 S A V SKY EMULOUS 2124

BAR LU BANDOLIER 73'02
NESSET LAKE KARMA 109U 1441644
 NESSET LAKE KARAMA IDM 76K

LAZY J BANDOLIER 21G
 BAR LU NEW DUCHESS 73H
 NEW FORCE END ZONE 80H
 CALLAMERE KARAMA 5F

BW: 60 lbs. Adj. 205D: 628 lbs. Jan. 30/11 Wt: 800 lbs.

EPDs	BW	WW	YW	MILK	TM	CE	CEM
	-0.3 35%	+52 25%	+90 19%	+19 18%	+45	+10.0 29%	+9.0 16%



Lot 91

92

NESSET LAKE LASS 9X

FEMALE IDM 9X 1575786 FEBRUARY 02 2010

SITZ TRAVELER 8180 NHF AMF CAF
S A V FINAL ANSWER 0035 NHF AMF CAF 1061938
 S A V EMULOUS 8145

G D A R TRAVELER 71 NHF AMF CAF
 SITZ EVERELDA ENTENSE 1137
 BON VIEW BANDO 598 AMF CAC
 S A V SKY EMULOUS 2124

BAR LU BANDOLIER 73'02
NESSET LAKE LASS 99U 1441684
 NESSET LAKE LASS 100R

LAZY J BANDOLIER 21G
 BAR LU NEW DUCHESS 73H
 NESSET LAKE RITO 8K4 IDM 79M
 NESSET LAKE LASS IDM 3K

BW: 82 lbs. Adj. 205D: 703 lbs. Jan. 30/11 Wt: 825 lbs.

EPDs	BW	WW	YW	MILK	TM	CE	CEM
	+2.8 35%	+59 25%	+99 19%	+17 18%	+47	+2.0 28%	+4.0 16%



Lot 92

It is hard to part with any of these Final Answer daughters.

93

NESSET LAKE JUNE 13X

FEMALE IDM 13X 1575790 FEBRUARY 05 2010

SITZ TRAVELER 8180 NHF AMF CAF
S A V FINAL ANSWER 0035 NHF AMF CAF 1061938
 S A V EMULOUS 8145

G D A R TRAVELER 71 NHF AMF CAF
 SITZ EVERELDA ENTENSE 1137
 BON VIEW BANDO 598 AMF CAC
 S A V SKY EMULOUS 2124

ISLA BANK DATELINE 624S
NESSET LAKE JUNE 76U 1441619
 NESSET LAKE JUNE 72G

BWB DATELINE 36P
 ISLA BANK PRIMOSE 24P
 NESSET LAKE EXTREME 53E
 NESSET LAKE JUNE 7D

BW: 78 lbs. Adj. 205D: 645 lbs. Jan. 30/11 Wt: 775 lbs.

EPDs	BW	WW	YW	MILK	TM	CE	CEM
	+1.4 35%	+50 25%	+84 19%	+15 17%	+40	+6.0 28%	+7.0 15%



Lot 93

NESSET LAKE ANGUS

BLACK ANGUS FEMALES



Lot 94



Lot 97

94 NESSET LAKE QUEEN MOTHER 80X

FEMALE IDM 80X 1575825 MARCH 01 2010

BAD LANDS FORTE 5S
GBT FORTE 861 1457541
 HOLLBROOK SOCIALITE 48K

PAPA FORTE 1921
 BAD LANDS PRINCESS 63K
 WAVENY ULTRA 16F
 HOLLBROOK SOCIALITE 3H

TC STOCKMAN 2164 AMF
NESSET LAKE QUEEN MOTHER 13N 1154902
 STANDARD HILL QUEEN MOTHER 68K

TC STOCKMAN
 TC RUBY 5087
 MGA TRIPLE THREAT 098H
 STANDARD HILL QUEEN MOTHER 27H

BW: 105 lbs. Adj. 205D: 718 lbs. Jan. 30/11 Wt: 850 lbs.

EPDs	BW	WW	YW	MILK	TM	CE	CEM
	+6.5 33%	+46 22%	+75 11%	+17 10%	+40	-8.0 21%	+0.0 7%

96 NESSET LAKE STAR QUEEN 86X

FEMALE IDM 86X 1575830 MARCH 03 2010

BAD LANDS FORTE 5S
GBT FORTE 861 1457541
 HOLLBROOK SOCIALITE 48K

PAPA FORTE 1921
 BAD LANDS PRINCESS 63K
 WAVENY ULTRA 16F
 HOLLBROOK SOCIALITE 3H

NESSET LAKE RITO 8K4 IDM 79M
NESSET LAKE STAR QUEEN 82P 1201869
 NESSET LAKE TRAVELER 63F

RITO 8K4 OF 5028 RITO 3X25 NHF AMF
 NESSET LAKE ERICA 44H
 MR EXTREME OF ANGUS RIDGE 1A
 MINERS CREEK TRAVELER 16C

BW: 86 lbs. Adj. 205D: 610 lbs. Jan. 30/11 Wt: 725 lbs.

EPDs	BW	WW	YW	MILK	TM	CE	CEM
	+3.3 33%	+42 21%	+67 11%	+14 9%	+35	+1.0 20%	+4.0 6%

95 NESSET LAKE LASS 84X

FEMALE IDM 84X 1575829 MARCH 02 2010

BAD LANDS FORTE 5S
GBT FORTE 861 1457541
 HOLLBROOK SOCIALITE 48K

PAPA FORTE 1921
 BAD LANDS PRINCESS 63K
 WAVENY ULTRA 16F
 HOLLBROOK SOCIALITE 3H

NESSET LAKE STOCKMAN IDM 60L
NESSET LAKE LASS 19P 1201847
 NESSET LAKE LASS 44E

TC STOCKMAN 2164 AMF
 NESSET LAKE ERICA 44H
 MR EXTREME OF ANGUS RIDGE 1A
 NESSET LAKE LASS 3A

BW: 90 lbs. Adj. 205D: 670 lbs. Jan. 30/11 Wt: 850 lbs.

EPDs	BW	WW	YW	MILK	TM	CE	CEM
	+3.7 33%	+38 21%	+60 11%	+15 9%	+34	+1.0 21%	+4.0 6%

97 NESSET LAKE JUNE 151X

FEMALE IDM 151X 1575866 MARCH 25 2010

CONNEALY FREIGHTLINER NHF AMF CAF
NESSET LAKE FREIGHTLINER 17U 1480796
 NESSET LAKE ERICA 76C

BON VIEW BANDO 598 AMF CAC
 JOANA ERICA OF CONANGA
 NESSET LAKE RAINMAKER 1Z
 NESSET LAKE ERICA 2A

NESSET LAKE STOCKMAN IDM 60L
NESSET LAKE JUNE 31R 1253275
 NESSET LAKE JUNE 72G

TC STOCKMAN 2164 AMF
 NESSET LAKE ERICA 44H
 NESSET LAKE EXTREME 53E
 NESSET LAKE JUNE 7D

BW: 73 lbs. Adj. 205D: 561 lbs. Jan. 30/11 Wt: 650 lbs.

EPDs	BW	WW	YW	MILK	TM	CE	CEM
	-0.4 33%	+33 21%	+60 11%	+14 11%	+31	+9.0 21%	+9.0 7%

NESSET LAKE ANGUS

BLACK ANGUS FEMALES



Lot 98

98

NESSET LAKE LASS 154X

FEMALE IDM 154X 1575868 MARCH 28 2010

CONNEALY FREIGHTLINER NHF AMF CAF
NESSET LAKE FREIGHTLINER 17U 1480796
NESSET LAKE ERICA 76C

BON VIEW BANDO 598 AMF CAC
JOANA ERICA OF CONANGA
NESSET LAKE RAINMAKER 1Z
NESSET LAKE ERICA 2A

NESSET LAKE STOCKMAN IDM 60L
NESSET LAKE LASS 101S 1325857
NESSET LAKE LASS 3A

TC STOCKMAN 2164 AMF
NESSET LAKE ERICA 44H
LEACHMAN NEW STYLE
NESSET LAKE LASS 71X

BW: 76 lbs. Adj. 205D: 591 lbs. Jan. 30/11 Wt: 700 lbs.

EPDs	BW	WW	YW	MILK	TM	CE	CEM
	+0.6 33%	+30 22%	+50 12%	+18 11%	+33	+6.0 21%	+7.0 8%

Both grandams of this heifer produced until 17 years of age.

99

PEN OF 3 HEIFERS

OPEN COMMERCIAL FEMALES

100

PEN OF 3 HEIFERS

OPEN COMMERCIAL FEMALES

Expected Progeny Difference (EPD) Explanations

An estimation of an animal's breeding value based on its pedigree and performance. EPDs indicate the average performance expected from an animal's progeny in comparison to another animal or to the breed average. They allow for fair comparison of animals' genetics across herds, regardless of environment and management differences.

P = Parental Average EPDs: These are the most basic and least accurate EPDs. They are the best guideline available when calves are first reported and there is no performance data on them yet. Parental Average EPDs are indicated by a P for accuracy and are simply an average of the dam and sire's EPDs. If a calf has only one parent with EPDs, its Parental Average EPDs will be only half of its one parent's EPDs.

P+ = Interim EPDs: These EPDs utilize the Parental Average EPD information on the calf plus any performance data on file and its ratio amongst its contemporary group. Interim EPDs are indicated by a P+ for accuracy and have a higher accuracy than a Parental Average EPD as they also include some performance data.

% = National EPDs: Calculated in the National Cattle Evaluations (NCEs), these EPDs are the most accurate prediction of breeding value or genetic merit that can be determined from pedigree and performance data submitted. National EPDs are published with numerical accuracies that reflect the quantity and quality of data used in its calculation.

BW = Birth Weight: Expressed in lbs., predicts on average how much heavier or lighter than the breed average an animal's calves will be. If the breed average is 3 and an Angus animal has a BW EPD of 5 then on average this animal's calves will be 2 lbs heavier than the breed average.

WW = Weaning Weight: Expressed in lbs, predicts comparative progeny weight at 205 days of age. This EPD reflects pre-weaning growth potential that an animal is expected to contribute to its calves.

YW = Yearling Weight: Expressed in lbs, predicts the differences in progeny performance at 365 days. The YW EPD reflects the animal's calves' potential for post-weaning growth.

Fertility Trait EPDs

Milk = Milk: Expressed in lbs. of calf weaned, this is a prediction of an animal's daughter's milking ability.

TM = Total Maternal: A measurement comprised of half of an animal's Milk EPD and half of its additive genetic contribution to its calves' weaning weights.

CE = Calving Ease Direct: Predicts the percentage of unassisted birthings expected from an animal's calves. This EPD reflects a combination of gestational growth and a calf's conformation. The higher the CED EPD, the more likely it is that the animal's calves will be born without assistance.

CEM = Calving Ease Maternal: Predicts the percentage of unassisted births an animal's daughters will have with their first calves. This is a reflection of daughters' pelvic shape and level of hormonal reactions and stamina during labour. The higher the CEM EPD, the more likely it is that the animal's daughters will give birth without assistance.

Terms & Conditions

CONDITIONS AND GUARANTEE: All entries sell with a responsible breeder guarantee of satisfaction. In the event of any unlikely dispute whatever, regular TERMS AND CONDITIONS recognized with Sales Management shall apply, and in accordance with the Canadian Aberdeen Angus Association Code of Ethics.

CATTLE INSPECTION: All carry permanent identity tags, corresponding to Sale Lot Numbers. All shall be available for inspection prior to sale.

ANNOUNCEMENTS: Errors discovered in the catalogue will be corrected by announcements from the auction stand at sale time and such corrections will take precedence over the printed matter in the catalogue.

EVERY ANIMAL: Sells to the highest bidder and in cases of disputes, the auctioneer's decision will be final.

RELEASE: No cattle will be released until the conclusion of the sale. Each animal becomes the risk of the purchaser as soon as sold.

INSURANCE: Ownership risk to purchaser commences when the Auctioneer's hammer falls. Livestock coverage will be available at the Clerk's desk from the appointed representatives on sale day.

TERMS OF SALE: Are cash or cheque at par, payable to Clerks of the Sale on Sale Day. No release will be given until satisfactory settlement has been made. We reserve the right to withhold animals from export shipment for whom payments have not been received.

ALL PERSONS: Who attend the Sale do so at their own risk, and the Owners, Sale Management and Sale Staff assume no liability, legal or otherwise, for property loss or for any accidents that may occur.

Please bring this catalog with you to the sale



**Douglas J. Henderson
& Associates Ltd.**

P.O. Box 5900, Lacombe, Alberta T4L 1X4

R P G / P R G	CANADA		POSTES
	POST		CANADA
	Postage paid		Port payé
	Addressed Admail		Médiaposte avec adresse
	03683273		

RETURN POSTAGE GUARANTEED
PORT DE RETOUR GARANTI

**BOWERMAN BROS.
NESSET LAKE ANGUS**

6th Annual
**BLACK ANGUS
BULL SALE**

FRIDAY, MARCH 18, 2011 • 1 PM (CST)

Meadow Lake Stockyards • Meadow Lake, Saskatchewan

