

#LOVE WHAT YOU DO



In The Loft
At Benlock Farms
Bull & Female Sale
February 23, 2017 | 1:00 pm

In The Loft At Benlock Farms

February 23, 2017 • 1:00 p.m.

Sale Staff...

Auctioneer
Ringman
Ringman
Consultant
Consultant
Consultant
Consultant
DLMS
Canadian Angus Ass. Rep

Sale Day Numbers...

Mike Fleury 306.222.9526
Harvey Welter 306.227.8684
Scott Johnstone 306.631.0767
Doug Henderson 403.350.8541
Harv Verishine 306.281.5424
Alvin Busby 306.221.0905
Randy Aims 306.858.7788
Mark Shologan 780.699.5082
Bob Toner 306.716.5272
Tom's Cell 306.230.9809

Catalogue 306.221.9073
Photography 403.593.2217
Insurance 306.931.0088

Cattlemen Serving Cattlemen

Need a hand? Contact anyone of our sales staff. Just good people that love the cow business as much as you and I.



Tom

Please join us for a breakfast prior to the sale of hot biscuits and gravy and then after the sale for Wagyu Angus Roast Beef.

Foot Rot - All bulls will be double vaccinated with Fusogard

Eye Spot on cattle will be indicated on lots by *es

Terms & Conditions...

- Video sale, be sure to come early to assess the bulls before the sale.
- Benlock reserves the right to collect semen on any bull.
- Benlock deliveries will happen prior to our own calving season, which starts last week of April.
- Bulls picked up after May 1st, are subject to a \$2.00/day feed charge.
- Each animal becomes the risk of the purchaser as soon as sold.
- Cash or cheque payable on sale day, unless other arrangements have been made prior to the sale. Announcements from the block will take precedence over printed material in the catalogue.
- All cattle sell under the standard terms and conditions set forth by the Canadian Angus Association. Precautions have been taken to ensure your safety; neither owners nor sale staff are responsible for any accidents.



Tom & Shawnda Blacklock
Box 145, Grandora, SK S0K 1V0
P: 306.668.2125 C: 306.230.9809
E: benlockfarms@gmail.com
www.benlockfarms.com

Welcome to Benlock Farms...

This may be the most fun sale of the Spring Bull Sale season with this being the fourth year be in the loft of the great old hip roof barn at Benlock. Loads of fun all day long, with an opportunity to buy good genetics from a reliable source.

This year the sale features 40 coming two year old bulls featuring the breeding of Alaskan, Panda, Scottie, Black Berry, McCoy and Crescent Creek McCumber 105A.

Also 50 bred heifers, featuring the service of Coleman Knight, Double Vision, KR Cash and Speckle Park.

This year will also have five exceptional purebred Angus upcoming yearling heifers and a very fancy Speckle Park heifer.

The Benlock herd was founded in 1963, the herd produced the dam and grandmother of the legendary herd sire Pine Drive Big Sky; Tom also raised the Champion Bred and Owned Female at the 1975 National Junior Heifer Show at Omaha, Nebraska.

Benlock was the home of the world famous Select Sires bull Early Sunset Emulous 60E, Agribition Grand Champion and Stampede Iceberg 36'79 who was the 1980 Grand Champion Bull at the Toronto Royal Winder Fair and in 1981 the Grand Champion at Farmfair and Reserve Grand Champion at Agribition.

Early Sunset Emulous 60E sired teh 1977 Champion Get of Sire at Agribition for Benlock, included in the many outstanding offspring was the great PS Power Play, a North American Champion.

Shawnda and Tom have established an excellent restaurant and high-end meat trade, not many programs have seen as many of their production presented directly to the consumer with exceptional results. Tom, a 5th generation Angus Breeder is supplying the cattle industry with genetics that work, proven by Tom and Shawnda's beef retail business.

Tom and Shawnda's program is most impressive; these cattle work well for them and their customers.

Tom and Shawnda have hand picked their best for this unique event. This has become a must attend sale with great food, hospitality and most importantly top Angus Breeding Stock.

If any of the staff, Tomm, Shawnda, Linda or myself can be of help in any way concerning this exciting event, please call.

See you in the loft at Benlock Farms.

Yours truly,

Doug Henderson

Douglas J. Henderson & Associates Ltd.

P.O. Box 5900, Lacombe, Alberta T4L 1X4

Doug & Linda Henderson

P: 403.782.3888 F: 403.782.3849 C: 403.350.8541

djhenderson@platinum.ca www.hendersoncattle.com

Can't make it to the sale? Internet Bidding Available.

To view this sale visit www.dlms.ca. Fill out the registration form located under registration and sign-up for your free user account and select a username and password.

BIDDERS - To be approved as a bidder, Log in to dlms.ca and click BUYER APPROVAL tab, select the sale you are interested in bidding at and click sign up.

For more information

Call DLMS Reps:

Whitney Besovich 780.991-3025

Mark Shologan 780.699.5082

DLMS
www.dlms.ca

Welcome...

Thank you so much... check out our back cover, a great picture as Bill Bestrop celebrates his 60th at our 2016 sale. Both Bill and Dave Fjaagesund have surpassed 20 years of buying Benlock bulls. Thank you and to all of our customers for your support. At the end of the day it's the people you remember. And we've been very blessed.

Not your typical bull supplier... these bulls, born at pasture, spent their first winter with their mothers on good quality silage and hay, till March of 2016. Using natural selection to help us sort and select genetics, grown and develop, durable sound healthy two year olds that will cover more cows, and hold their shape in a variety of environments.

These naturally presented, easy to evaluate bulls are yours to pre select, on budget, at your convenience, without pressure.

Cattlemen have enough challenges, the bulls you buy shouldn't be one of them.

We manage cattle not numbers... I love these twos, we just grow them out slow, a little pea screenings, at the end to shine them up, and out they go. Despite this you'll find these bulls show a lot of natural shape, with growth that'll compete with the best. As they say, the devil is in the detail, a lot of pride has gone into feet, structure, fertility, calving ease, maternal, all of which has been intensely bred in through many generations, of the same.

Private Treaty Bulls... a program designed to be customer friendly. Bulls, in numbers, on budget, convenient, low pressure. And the extra bonus that you can still flip, if you so choose, to an auction bull. Just sit back and enjoy the social knowing you've been looked after.

Foundation Style Females... breeding 500 females this year we have selected a fine group to offer. All of our commercial bred heifers as well as a nice sampling of purebreds. They all carry some fascinating services which come sale day will represent only a 60 day wait for your return. That's a fast turn around on your investment.

The heifer calves, once again, fancy fancy, will add a little Bling.

Please come... enjoy the social. This year's food is all Benlock raised with our famous in house hot dogs and Wagyu Angus roast beef. And of course our pre sale breakfast of biscuits and gravy. As we all celebrate another year traveling down the cow trail.

Tom & Shawnda



**Benlock Panda 112C****1 Benlock Panda 112C**

1876912 TOM 112C 09/05/2015 Male

HF TIGER 5T
BENLOCK KUNG FU PANDA 72X 1582803
 BENLOCK EVENING TINGE 15U

BAR A GRID IRON 25P
BENLOCK ATALANTA 93S 1344867
 BENLOCK ATALANTA 76J

HF KODIAK 5R
 HF ECHO 84R
 BENLOCK MONTANA 67N
 BENLOCK EVENING TINGE 2P

G A R GRID MAKER
 GET-A-LONG ERICA 025
 S A F FAME
 BENLOCK ATALANTA 24F

| EPDS | BW | WW | YW | MM | TM | ACT BW | ADJ 205 WW | CE |
|------|-----|----|----|----|----|--------|------------|----|
| | 2.1 | 55 | 91 | 21 | 48 | 87 | 770 | * |

As thick and correct as they come, this is the 3rd feature bull 93S has produced with Thrive, then Prospective high seller to Les Schick.

2 Benlock Alaskan 46C

1876864 TOM 46C 29/04/2015 Male *es

HF KODIAK 5R
HF ALASKAN 94T 1411905
 HF ECHO 112R

BENLOCK MONTANA 67N
BENLOCK EVENING TINGE 15U 1468814
 BENLOCK EVENING TINGE 2P

SANDY BAR ADVANTAGE 43M
 WILBAR RUBY 955N
 BT RIGHT TIME 24J
 HF ECHO 187N

YOUNG DALE KRUGERRAND 3L
 WILBAR RUBY 548L
 BENLOCK DATELINE 127L
 BENLOCK EVENING TINGE 19L

| EPDS | BW | WW | YW | MM | TM | ACT BW | ADJ 205 WW | CE |
|------|-----|----|----|----|----|--------|------------|----|
| | 2.0 | 57 | 89 | 15 | 31 | 88 | 766 | ** |

Out of Panda's mom, this bulls full brother sold to Lyal Klatt last year as our 2nd high seller. 46C has it all.

**Benlock Alaskan 46C**

3

Benlock Alaskan 62C

1876874 TOM 62C 02/05/2015 Male

HF KODIAK 5R
HF ALASKAN 94T 1411905
 HF ECHO 112R

SANDY BAR ADVANTAGE 43M
 WILBAR RUBY 955N
 BT RIGHT TIME 24J
 HF ECHO 187N

BENLOCK MONTANA 67N
BENLOCK ROSEBUD 118U 1468881
 BENLOCK ROSEBUD 9R

YOUNG DALE KRUGERRAND 3L
 WILBAR RUBY 548L
 YOUNG DALE TOUCH DOWN 36M
 BENLOCK ROSEBUD 21K

| EPDS | BW | WW | YW | MM | TM | ACT BW | ADJ 205 WW | CE |
|------|-----|----|----|----|----|--------|------------|----|
| | 2.5 | 55 | 86 | 17 | 46 | 90 | 775 | * |

62C is moderate framed like his dam, yet just simply massive in volume.

**Benlock Alaskan 62C**

4

Benlock Alaskan 83C

1876874 TOM 62C 02/05/2015 Male

HF KODIAK 5R
HF ALASKAN 94T 1411905
 HF ECHO 112R

SANDY BAR ADVANTAGE 43M
 WILBAR RUBY 955N
 BT RIGHT TIME 24J
 HF ECHO 187N

BENLOCK TOUCH DOWN 107S
BENLOCK ERICA 110W 1537803
 BENLOCK ERICA 87P

BENLOCK TOUCH DOWN 42P
 PARK LAND MO 51K
 FCR TIMELESS RITO 48M
 YOR MAX ERICA 6H

| EPDS | BW | WW | YW | MM | TM | ACT BW | ADJ 205 WW | CE |
|------|-----|----|----|----|----|--------|------------|----|
| | 2.8 | 50 | 74 | 15 | 41 | 87 | 728 | * |

Generations of perfect phenotype.

**Benlock Alaskan 83C**

5

Benlock Panda 71C

1876887 TOM 71C 03/05/2015 Male

HF TIGER 5T
BENLOCK KUNG FU PANDA 72X 1582803
 BENLOCK EVENING TINGE 15U

HF KODIAK 5R
 HF ECHO 84R
 BENLOCK MONTANA 67N
 BENLOCK EVENING TINGE 2P

SMW ULYSSES 7U
BENLOCK EVENING TINGE 153X 1582740
 BENLOCK EVENING TINGE 29R

S A V NET WORTH 4200
 SMW MISTRESS 22P
 YOUNG DALE TOUCH DOWN 36M
 BENLOCK EVENING TINGE 18K

| EPDS | BW | WW | YW | MM | TM | ACT BW | ADJ 205 WW | CE |
|------|-----|----|----|----|----|--------|------------|----|
| | 3.2 | 50 | 85 | 18 | 42 | 88 | 669 | * |

When you look at this bulls pedigree, you can see why this bull puts all the puzzle pieces together.

**Benlock Panda 71C**



6

Benlock Blackberry 271C

1886563 TOM 271C 20/06/2015 Male

BENLOCK BLACKBERRY 39T
BENLOCK BLACKBERRY 58Z 1700769
 BENLOCK ERICA 31S

BENLOCK BLACKBERRY 110P
 BENLOCK ATLANTA 25N
 BENLOCK MONTANA 67N
 BENLOCK ERICA 92N

BENLOCK EASY TOUCH 6P
BENLOCK ATALANTA 49S 1344934
 BENLOCK ATALANTA 30P

YOUNG DALE TOUCH DOWN 36M
 BENLOCK BLACKBIRD 3K
 BENLOCK DATELINE 127L
 BENLOCK ATALANTA 24F

| EPDS | BW | WW | YW | MM | TM | ACT BW | ADJ 205 WW | CE |
|------|-----|----|----|----|----|--------|------------|----|
| | 2.7 | 45 | 72 | 23 | 46 | 90 | 743 | * |

Our own home grown bloodline, Blackberry, are so consistant, we just need to use them more.

**Benlock Cucumber 192C**

7

Benlock Cucumber 192C

1876989 TOM 192C 21/05/2015 Male

MC CUMBER 8R101 RITO 1136
CRESCENT CREEK ENTREPRENEUR105A 1759306
 CRESCENT CREEK HEROINE 119U

SINCLAIR ENTREPRENEUR 8R101
 MISS WIX 7176 OF MC CUMBER
 MINBURN MAIN EVENT 82R
 CRESCENT CREEK HEROINE 13L

SANDY BAR ADVANTAGE 65W
BENLOCK EVENING TINGE 116Z 1700749
 BENLOCK EVENING TINGE 120P

WILBAR ADVANTAGE 202R
 SANDY BAR ANNIE K 78K
 FCR TIMELESS RITO 48M
 BENLOCK EVENING TINGE 13L

| EPDS | BW | WW | YW | MM | TM | ACT BW | ADJ 205 WW | CE |
|------|-----|----|----|----|----|--------|------------|----|
| | 2.9 | 42 | 72 | 3 | 23 | 85 | 563 | ** |

Don't worry about his 205, there is lots of growth and milk genetics in this bull.

Bull Buyer Draw

**Benlock Farms will donate
 \$400.00 to the 4-H Club as
 chosen by the winner of the
 Bull Buyer Draw**



2014 Winner - Al Lowe
Viscount 4-H Club

2015 Winner - Les Schick
Briercrest 4-H Club

2016 Winner - Bill Bestrop
Ernfold 4-H Club



Benlock Alaskan 61C

8

Benlock Alaskan 61C

1877043 RYE 61C 02/05/2015 Male *es

HF KODIAK 5R
HF ALASKAN 94T 1411905
 HF ECHO 112R

BENLOCK MONTANA 67N
BENLOCK ELBA 3X 1582839
 HOMESTEADER ELBA 1K

SANDY BAR ADVANTAGE 43M
 WILBAR RUBY 955N
 BT RIGHT TIME 24J
 HF ECHO 187N

YOUNG DALE KRUGERRAND 3L
 WILBAR RUBY 548L
 KBJ ROGUE II 424H
 HOMESTEADER ELBA 9E

| EPDS | BW | WW | YW | MM | TM | ACT BW | ADJ 205 WW | CE |
|------|-----|----|----|----|----|--------|------------|----|
| | 2.6 | 57 | 88 | 17 | 39 | 90 | 739 | * |

Last years full brother went to Brent Griffin. Very high quality bull, with a little extra stretch.

9

Benlock Scotty 97C

1876901 TOM 97C 07/05/2015 Male *es

MVF FREIGHTLINER 630T
BENLOCK SCOTTY 1Y 1640371
 MVF ELLEN 48N

BENLOCK MONTANA 100N
BENLOCK EVENING TINGE 111S 1364822
 BENLOCK EVENING TINGE 18K

CONNEALY FREIGHTLINER
 MVF ELLEN 26N
 GDAR SVF TRAVELER 234D
 BOTANY ANGUS ELLEN 6G

YOUNG DALE KRUGERRAND 3L
 BENLOCK RUBY 13A
 BENLOCK FORTUNE 4H
 BENLOCK EVENING TINGE 64H

| EPDS | BW | WW | YW | MM | TM | ACT BW | ADJ 205 WW | CE |
|------|-----|----|----|----|----|--------|------------|----|
| | 1.3 | 55 | 86 | 17 | 45 | 84 | 820 | ** |

Selling 1/2 int and 1/2 possession July 22 breeding season possession date or buyer can double bid price and take the whole bull.



Benlock Scotty 97C

**Benlock Alaskan 210C**

10 Benlock Alaskan 210C

1876999 TOM 210C 25/05/2015 Male

HF KODIAK 5R
HF ALASKAN 94T 1411905
 HF ECHO 112R

KMK ALLIANCE 6595 I87
MVF TIBBIE 979T 1421222
 MVF TIBBIE 176G

SANDY BAR ADVANTAGE 43M
 WILBAR RUBY 955N
 BT RIGHT TIME 24J
 HF ECHO 187N

SITZ ALLIANCE 6595
 G A R EXT 916
 RITO 9FB3 OF 5H11 FULLBACK
 MVF TIBBIE 14C

| EPDS | BW | WW | YW | MM | TM | ACT BW | ADJ 205 WW | CE |
|------|-----|----|----|----|----|-----------|---------------|----|
| | 2.6 | 56 | 88 | 19 | 49 | 88 | 797 | * |

Tibbie the dam of "Tid Bit" who sold to Brad and Murray Kinar. 210C has that same length that pushes down the scale.

11 Benlock Panda 193C

1876990 TOM 193C 21/05/2015 Male

HF TIGER 5T
BENLOCK KUNG FU PANDA 72X 1582803
 BENLOCK EVENING TINGE 15U

BENLOCK TOUCH DOWN 22R
BENLOCK EVENING TINGE 83X 1582771
 BENLOCK EVENING TINGE 88S

HF KODIAK 5R
 HF ECHO 84R
 BENLOCK MONTANA 67N
 BENLOCK EVENING TINGE 2P

YOUNG DALE TOUCH DOWN 36M
 BENLOCK ATLANTA 5N
 BENLOCK MONTANA 100N
 BENLOCK EVENING TINGE 53D

| EPDS | BW | WW | YW | MM | TM | ACT BW | ADJ 205 WW | CE |
|------|-----|----|----|----|----|-----------|---------------|----|
| | 2.2 | 52 | 87 | 15 | 40 | 87 | 691 | ** |

Very complete bull, with the Panda Shape.

**Benlock Panda 193C**

12 Benlock Alaskan 96C

1876900 TOM 96C 07/05/2015 Male

HF KODIAK 5R
HF ALASKAN 94T 1411905
 HF ECHO 112R

SANDY BAR ADVANTAGE 43M
 WILBAR RUBY 955N
 BT RIGHT TIME 24J
 HF ECHO 187N

BENLOCK MONTANA 67N
BENLOCK EVENING TINGE 12W 1525884
 BENLOCK EVENING TINGE 62S

YOUNG DALE KRUGERRAND 3L
 WILBAR RUBY 548L
 BAR A GRID IRON 25P
 BENLOCK EVENING TINGE 120N

| EPDS | BW | WW | YW | MM | TM | ACT BW | ADJ 205 WW | CE |
|------|-----|----|----|----|----|--------|------------|-----|
| | 0.9 | 53 | 83 | 12 | 40 | 85 | 742 | *** |

Full brother was last years lead off bull selling to Jack & Ron Traynor.

**Benlock Alaskan 96C****13 Benlock Alaskan 12C**

1876442 TOM 12C 18/04/2015 Male

HF KODIAK 5R
HF ALASKAN 94T 1411905
 HF ECHO 112R

SANDY BAR ADVANTAGE 43M
 WILBAR RUBY 955N
 BT RIGHT TIME 24J
 HF ECHO 187N

BENLOCK GRID IRON 15S
BENLOCK ERICA 250Z 1701230
 BENLOCK ERICA 34X

BAR A GRID IRON 25P
 BENLOCK ATALANTA 24F
 BENLOCK MONTANA 67N
 BENLOCK ERICA 120T

| EPDS | BW | WW | YW | MM | TM | ACT BW | ADJ 205 WW | CE |
|------|-----|----|----|----|----|--------|------------|-----|
| | 1.6 | 47 | 75 | 14 | 39 | 84 | 696 | *** |

Great mix of calving ease without sacrificing length.

**Benlock Alaskan 12C****14 Benlock Scotty 170C**

1876976 TOM 170C 17/05/2015 Male

MVF FREIGHTLINER 630T
BENLOCK SCOTTY 1Y 1640371
 MVF ELLEN 48N

CONNELLY FREIGHTLINER
 MVF ELLEN 26N
 GDAR SVF TRAVELER 234D
 BOTANY ANGUS ELLEN 6G

BENLOCK TASTE TEST 8P
BENLOCK EVENING TINGE 167W 1526502
 BENLOCK EVENING TINGE 13N

YOUNG DALE TOUCH DOWN 36M
 BENLOCK ATALANTA 19D
 BASIN MAX 602C
 BENLOCK EVENING TINGE 59D

| EPDS | BW | WW | YW | MM | TM | ACT BW | ADJ 205 WW | CE |
|------|-----|----|----|----|----|--------|------------|----|
| | 2.7 | 59 | 94 | 19 | 49 | 89 | 776 | * |

Scotty, Taste Test, Max, there is a ton of performance in this bull.

15 Benlock Alaskan 124C

1876919 TOM 124C 10/05/2015 Male

HF KODIAK 5R
HF ALASKAN 94T 1411905
 HF ECHO 112R

SANDY BAR ADVANTAGE 43M
 WILBAR RUBY 955N
 BT RIGHT TIME 24J
 HF ECHO 187N

BAR A GRID IRON 25P
BENLOCK GRACE 39S 1344884
 FREYBURN GRACE 57K

G A R GRID MAKER
 GET-A-LONG ERICA 02S
 EBON HILL EQUALIZER 117'97
 YOUNG DALE GRACE 32C

| EPDS | BW | WW | YW | MM | TM | ACT BW | ADJ 205 WW | CE |
|------|-----|----|----|----|----|--------|------------|-----|
| | 1.5 | 41 | 67 | 13 | 37 | 84 | 730 | *** |

These Alaskans will give you shape, length, and calving ease.

16 Benlock Panda 126C

1876921 TOM 126C 10/05/2015 Male

HF TIGER 5T
BENLOCK KUNG FU PANDA 72X 1582803
 BENLOCK EVENING TINGE 15U

HF KODIAK 5R
 HF ECHO 84R
 BENLOCK MONTANA 67N
 BENLOCK EVENING TINGE 2P

BENLOCK TOUCH DOWN 107S
BENLOCK ERICA 116Y 1640492
 BENLOCK ERICA 87P

BENLOCK TOUCH DOWN 42P
 PARK LAND MO 51K
 FCR TIMELESS RITO 48M
 YOR MAX ERICA 6H

| EPDS | BW | WW | YW | MM | TM | ACT BW | ADJ 205 WW | CE |
|------|-----|----|----|----|----|--------|------------|----|
| | 3.3 | 57 | 88 | 18 | 46 | 90 | 757 | * |

Lots of natural thickness.

17 Benlock Alaska 7C

1876434 TOM 7C 17/04/2015 Male

HF KODIAK 5R
HF ALASKAN 94T 1411905
 HF ECHO 112R

SANDY BAR ADVANTAGE 43M
 WILBAR RUBY 955N
 BT RIGHT TIME 24J
 HF ECHO 187N

SMW ULYSSES 7U
BENLOCK TIP TOP 62A 1761815
 BENLOCK TIPTOP 38T

S A V NET WORTH 4200
 SMW MISTRESS 22P
 BAR A GRID IRON 25P
 BENLOCK TIP TOP 4K

| EPDS | BW | WW | YW | MM | TM | ACT BW | ADJ 205 WW | CE |
|------|-----|----|----|----|----|--------|------------|----|
| | 2.7 | 46 | 75 | 14 | 36 | 82 | 621 | ** |

Heifers first calf.



Benlock Benlock Raven Ray 34C

18 Benlock Benlock Raven Ray 34C

1886567 TOM 34C 27/04/2015 Male

BENLOCK TOUCH DOWN 107S
BENLOCK STOKED 211Y 1640545
BENLOCK BLACKLASS 19T

BENLOCK TOUCH DOWN 42P
PARK LAND MO 51K
BENLOCK TASTE TEST 8P
BENLOCK BLACKLASS 42K

BENLOCK EASY TOUCH 6P
BENLOCK BLACKLASS 40S 1344944
BENLOCK BLACKLASS 92P

YOUNG DALE TOUCH DOWN 36M
BENLOCK BLACKBIRD 3K
SCC 561G MARKSMAN 50M
BENLOCK BLACKLASS 91J

| EPDS | BW | WW | YW | MM | TM | ACT BW | ADJ 205 WW | CE |
|------|-----|----|----|----|----|--------|------------|----|
| | 4.1 | 34 | 54 | 22 | 40 | 90 | 613 | * |

Triple bred Touch Down, adds shape and hair.

19 Benlock Scotty 128C

1876923 TOM 128C 10/05/2015 Male

MVF FREIGHTLINER 630T
BENLOCK SCOTTY 1Y 1640371
MVF ELLEN 48N

CONNELLY FREIGHTLINER
MVF ELLEN 26N
GDAR SVF TRAVELER 234D
BOTANY ANGUS ELLEN 6G

BENLOCK MONTANA 67N
BENLOCK BLACKLASS 134W 1525474
BENLOCK BLACKLASS 24H

YOUNG DALE KRUGERRAND 3L
WILBAR RUBY 548L
OLE SASKALTA RITO 133D
BENLOCK BLACKLASS 5E

| EPDS | BW | WW | YW | MM | TM | ACT BW | ADJ 205 WW | CE |
|------|-----|----|----|----|----|--------|------------|----|
| | 2.6 | 47 | 77 | 15 | 39 | 88 | 672 | * |

The Scotties are proven to perform.



20 Benlock Panda 155C

1876966 TOM 155C 14/05/2015 Male

HF TIGER 5T
BENLOCK KUNG FU PANDA 72X 1582803
BENLOCK EVENING TINGE 15U

HF KODIAK 5R
HF ECHO 84R
BENLOCK MONTANA 67N
BENLOCK EVENING TINGE 2P

BAR A GRID IRON 25P
BENLOCK ATALANTA 64U 1468726
BENLOCK ATALANTA 40J

G A R GRID MAKER
GET-A-LONG ERICA 025
M DOUBLE B EXECUTIVE 17G
BENLOCK ATALANTA 68CC

| EPDS | BW | WW | YW | MM | TM | ACT BW | ADJ 205 WW | CE |
|------|-----|----|----|----|----|--------|------------|-----|
| | 2.5 | 52 | 85 | 18 | 43 | 84 | 719 | *** |

Calving ease and performance.

21 Benlock Cucumber 102C

1876905 TOM 102C 07/05/2015 Male

MC CUMBER 8R101 RITO 1136

CRESCENT CREEK ENTREPRENEUR105A 1759306

CRESCENT CREEK HEROINE 119U

SINCLAIR ENTREPRENEUR 8R101

MISS WIX 7176 OF MC CUMBER

MINBURN MAIN EVENT 82R

CRESCENT CREEK HEROINE 13L

BENLOCK TASTE TEST 8P

BENLOCK ATALANTA 120Z 1701187

BENLOCK ATALANTA 12U

YOUNG DALE TOUCH DOWN 36M

BENLOCK ATALANTA 19D

M DOUBLE B HOBSON 136S

BENLOCK ATALANTA 93S

| EPDS | BW | WW | YW | MM | TM | ACT BW | ADJ 205 WW | CE |
|------|-----|----|----|----|----|--------|------------|----|
| | 2.9 | 50 | 82 | 16 | 41 | 84 | 714 | ** |

The Cucumbers are moderate and will catch your eye.



Benlock Cucumber 102C

22 Benlock Panda 279C

1877028 TOM 279C 23/06/2015 Male

HF TIGER 5T

BENLOCK KUNG FU PANDA 72X 1582803

BENLOCK EVENING TINGE 15U

HF KODIAK 5R

HF ECHO 84R

BENLOCK MONTANA 67N

BENLOCK EVENING TINGE 2P

SMW ULYSSES 7U

BENLOCK EVENING TINGE 57Y 1640555

BENLOCK EVENING TINGE 104T

S A V NET WORTH 4200

SMW MISTRESS 22P

BENLOCK BLACKBERRY 110P

BENLOCK EVENING TINGE 126R

| EPDS | BW | WW | YW | MM | TM | ACT BW | ADJ 205 WW | CE |
|------|-----|----|----|----|----|--------|------------|----|
| | 2.6 | 50 | 86 | 18 | 43 | 88 | 682 | ** |

One of my personal favorites. Style, quality, thickness, he has it all.



Benlock Panda 279C

23 Benlock Ulysses 109C

1900834 TOM 109C 08/05/2015 Male

SMW ULYSSES 7U

BENLOCK ULYSSES 163Y 1640432

PARK LAND MO 51K

S A V NET WORTH 4200

SMW MISTRESS 22P

JNH RANCHERS PROMISE 99F

MORRISON MO 51F

BENLOCK TOUCH DOWN 107S

BENLOCK ATLANTA 133W 1537793

BENLOCK ATALANTA 103M

BENLOCK TOUCH DOWN 42P

PARK LAND MO 51K

TC STOCKMAN 365

BENLOCK EVENING TINGE 18K

| EPDS | BW | WW | YW | MM | TM | ACT BW | ADJ 205 WW | CE |
|------|-----|----|----|----|----|--------|------------|----|
| | 3.8 | 46 | 65 | 18 | 41 | 89 | 694 | * |

This bull takes shape & style to that extra level.



**Benlock McCoy 3C**

24 Benlock McCoy 3C

1876429 TOM 3C 15/04/2015 Male

RA LINCOLN W144
S MCCOY 124 1820770
 S MAYFLOWER 751

REICH LEAD ON 424
 RA BRANDY P11
 G A R GRID MAKER
 S MAYFLOWER 2118

HF ALASKAN 94T
BENLOCK TIBBIE 21A 1761824
 MVF TIBBIE 979T

HF KODIAK 5R
 HF ECHO 112R
 KMK ALLIANCE 6595 I87
 MVF TIBBIE 176G

| EPDS | BW | WW | YW | MM | TM | ACT BW | ADJ 205 WW | CE |
|------|-----|----|----|----|----|--------|------------|-----|
| | 1.4 | 44 | 80 | 23 | 45 | 82 | 625 | *** |

Calving ease with extra depth.

25 Benlock Cucumber 63C

1876875 TOM 63C 02/05/2015 Male

MC CUMBER 8R101 RITO 1136
CRESCENT CREEK ENTREPRENEUR105A 1759306
 CRESCENT CREEK HEROINE 119U

SINCLAIR ENTREPRENEUR 8R101
 MISS WIX 7176 OF MC CUMBER
 MINBURN MAIN EVENT 82R
 CRESCENT CREEK HEROINE 13L

BENLOCK BLACKBERRY 39T
BENLOCK EVENING TINGE 94Z 1700727
 BENLOCK EVENING TINGE 36L

BENLOCK BLACKBERRY 110P
 BENLOCK ATLANTA 25N
 OLE SASKALTA RITO 133D
 BENLOCK EVENING TINGE 49Z

| EPDS | BW | WW | YW | MM | TM | ACT BW | ADJ 205 WW | CE |
|------|-----|----|----|----|----|--------|------------|----|
| | 2.3 | 53 | 82 | 11 | 36 | 88 | 775 | ** |

Massive early growth numbers with a moderate mature frame.



26 Benlock Scotty 215C

1893892 RYE 215C 29/05/2015 Male

MVF FREIGHTLINER 630T
BENLOCK SCOTTY 1Y 1640371
 MVF ELLEN 48N

CONNEALY FREIGHTLINER
 MVF ELLEN 26N
 GDAR SVF TRAVELER 234D
 BOTANY ANGUS ELLEN 6G

BENLOCK TASTE TEST 8P
BENLOCK EVENING TINGE 48X 1525474
 BENLOCK EVENING TINGE 36L

YOUNG DALE TOUCH DOWN 36M
 BENLOCK ATALANTA 19D
 OLE SASKALTA RITO 133D
 BENLOCK EVENING TINGE 49Z

| EPDS | BW | WW | YW | MM | TM | ACT BW | ADJ 205 WW | CE |
|------|-----|----|----|----|----|--------|------------|----|
| | 2.5 | 57 | 88 | 17 | 46 | 90 | 739 | * |

Scotty, Taste Test, growth with nice shape.



Benlock Blackberry 173C

27 Benlock Blackberry 173C

1876978 TOM 173C 17/05/2015 Male

BENLOCK BLACKBERRY 39T
BENLOCK BLACKBERRY 58Z 1700769
BENLOCK ERICA 31S

BENLOCK BLACKBERRY 110P
BENLOCK ATLANTA 25N
BENLOCK MONTANA 67N
BENLOCK ERICA 92N

HF ALASKAN 94T
BENLOCK ATALANTA 74Z 1700729
BENLOCK ATALANTA 19M

HF KODIAK 5R
HF ECHO 112R
VERMILION DATELINE 7078
BENLOCK ATALANTA 76J

| EPDS | BW | WW | YW | MM | TM | ACT BW | ADJ 205 WW | CE |
|------|-----|----|----|----|----|--------|------------|----|
| | 2.5 | 50 | 80 | 17 | 43 | 88 | 720 | ** |

A tank, who goes back to some very proven cows.

28 Benlock McCoy 14C

1876443 TOM 14C 19/04/2015 Male

RA LINCOLN W144
S MCCOY 124 1820770
S MAYFLOWER 751

REICH LEAD ON 424
RA BRANDY P11
G A R GRID MAKER
S MAYFLOWER 2118

HF ALASKAN 94T
BENLOCK ATALANTA 284A 1761854
BENLOCK ATLANTA 112W

HF KODIAK 5R
HF ECHO 112R
BENLOCK MONTANA 67N
BENLOCK ATLANTA 127R

| EPDS | BW | WW | YW | MM | TM | ACT BW | ADJ 205 WW | CE |
|------|-----|----|----|----|----|--------|------------|-----|
| | 1.4 | 44 | 81 | 20 | 42 | 80 | 607 | *** |

Bigger framed calving east McCoy.

29 Benlock Cucumber 129C

1876926 TOM 129C 10/05/2015 Male *es

MC CUMBER 8R101 RITO 1136
CRESCENT CREEK ENTREPRENEUR105A 1759306
CRESCENT CREEK HEROINE 119U

SINCLAIR ENTREPRENEUR 8R101
MISS WIX 7176 OF MC CUMBER
MINBURN MAIN EVENT 82R
CRESCENT CREEK HEROINE 13L

HF ALASKAN 94T
BENLOCK ERICA 244Z 1700741
BENLOCK ERICA 25P

HF KODIAK 5R
HF ECHO 112R
BENLOCK DATELINE 127L
BENLOCK ERICA 69G

| EPDS | BW | WW | YW | MM | TM | ACT BW | ADJ 205 WW | CE |
|------|-----|----|----|----|----|--------|------------|----|
| | 2.4 | 54 | 85 | 15 | 42 | 87 | 789 | * |

Extremely thick. 244Z cow is a beautiful female, and a maternal sister to Tibeon.



Benlock Cucumber 129C



Benlock Kung Fu Panda 166C



30 Benlock Kung Fu Panda 166C

1876973 TOM 166C 16/05/2015 Male

HF TIGER 5T
BENLOCK KUNG FU PANDA 72X 1582803
BENLOCK EVENING TINGE 15U

HF KODIAK 5R
HF ECHO 84R
BENLOCK MONTANA 67N
BENLOCK EVENING TINGE 2P

BENLOCK TASTE TEST 8P
BENLOCK ROSEBUD 134Y 1640430
BENLOCK ROSEBUD 21K

YOUNG DALE TOUCH DOWN 36M
BENLOCK ATALANTA 19D
BENLOCK FORTUNE 4H
YOR MAX ROSE 3H

| EPDS | BW | WW | YW | MM | TM | ACT BW | ADJ 205 WW | CE |
|------|-----|----|-----|----|----|-----------|---------------|-----|
| | 1.6 | 63 | 101 | 22 | 53 | 78 | 777 | *** |

Huge birth to weaning numbers.

31 Benlock Blackberry 223C

1877001 TOM 223C 31/05/2015 Male

BENLOCK BLACKBERRY 39T
BENLOCK BLACKBERRY 58Z 1700769
BENLOCK ERICA 31S

BENLOCK BLACKBERRY 110P
BENLOCK ATLANTA 25N
BENLOCK MONTANA 67N
BENLOCK ERICA 92N

BENLOCK TOUCH DOWN 22R
BENLOCK BLACKLASS 164Z 1700786
BENLOCK BLACKLASS 19T

YOUNG DALE TOUCH DOWN 36M
BENLOCK ATLANTA 5N
BENLOCK TASTE TEST 8P
BENLOCK BLACKLASS 42K

| EPDS | BW | WW | YW | MM | TM | ACT BW | ADJ 205 WW | CE |
|------|-----|----|----|----|----|-----------|---------------|----|
| | 3.5 | 55 | 82 | 22 | 50 | 88 | 767 | ** |

Right at the top for weaning weights.



Benlock Blackberry 223C

32 Benlock Alaskan 134C

1876934 TOM 134C 11/05/2015 Male

HF KODIAK 5R
HF ALASKAN 94T 1411905
HF ECHO 112R

SANDY BAR ADVANTAGE 43M
WILBAR RUBY 955N
BT RIGHT TIME 24J
HF ECHO 187N

SMW ULYSSES 7U
BENLOCK EVA 15X 1582739
BENLOCK EVA 20R

S A V NET WORTH 4200
SMW MISTRESS 22P
YOUNG DALE TOUCH DOWN 36M
BENLOCK EVA 117M

| EPDS | BW | WW | YW | MM | TM | ACT BW | ADJ 205 WW | CE |
|------|-----|----|----|----|----|--------|------------|----|
| | 1.7 | 55 | 84 | 15 | 44 | 86 | 755 | ** |

Has the Alaskan Stretch and temperament.

33 TOM 19C ~ Sells Unregistered

TOM 19C 20/04/2015 Male

HF KODIAK 5R
HF ALASKAN 94T 1411905
HF ECHO 112R

SANDY BAR ADVANTAGE 43M
WILBAR RUBY 955N
BT RIGHT TIME 24J
HF ECHO 187N

TOM 299A

| EPDS | BW | WW | YW | MM | TM | ACT BW | ADJ 205 WW | CE |
|------|----|----|----|----|----|--------|------------|----|
| | | | | | | 85 | N/A | * |

As long bodied as you can make them.

34 Benlock Panda 182C

1876982 TOM 182C 19/05/2015 Male

HF TIGER 5T
BENLOCK KUNG FU PANDA 72X 1582803
BENLOCK EVENING TINGE 15U

HF KODIAK 5R
HF ECHO 84R
BENLOCK MONTANA 67N
BENLOCK EVENING TINGE 2P

BENLOCK DATELINE 127L
BENLOCK ERICA 29P 1230663
BENLOCK ERICA 8Z

VERMILION DATELINE 7078
BENLOCK DELIA 61J
F V VOYAGEUR 328X
BENLOCK ERICA TOM 7R

| EPDS | BW | WW | YW | MM | TM | ACT BW | ADJ 205 WW | CE |
|------|-----|----|----|----|----|--------|------------|----|
| | 2.4 | 47 | 83 | 20 | 43 | 88 | 709 | ** |

The 29P cow is still producing at the top of her game.

35 Benlock Cucumber 50C

1876869 TOM 50C 30/04/2015 Male

MC CUMBER 8R101 RITO 1136
CRESCENT CREEK ENTREPRENEUR105A 1759306
CRESCENT CREEK HEROINE 119U

SINCLAIR ENTREPRENEUR 8R101
MISS WIX 7176 OF MC CUMBER
MINBURN MAIN EVENT 82R
CRESCENT CREEK HEROINE 13L

BENLOCK GRID IRON 15S
BENLOCK ATALANTA 256Z 1701243
BENLOCK ATALANTA 115X

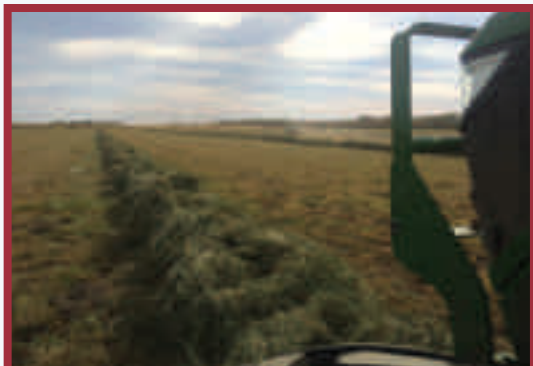
BAR A GRID IRON 25P
BENLOCK ATALANTA 24F
SMW ULYSSES 7U
BENLOCK ATALANTA 28P

| EPDS | BW | WW | YW | MM | TM | ACT BW | ADJ 205 WW | CE |
|------|-----|----|----|----|----|--------|------------|-----|
| | 1.0 | 53 | 84 | 14 | 39 | 78 | 767 | *** |

Probably our best calving ease to performance bull with style to boot.



Benlock Cucumber 50C



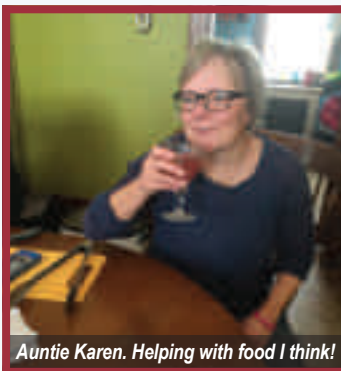
Chewby the Show Dog



Gordi Banda with his 10 foot Grizzly



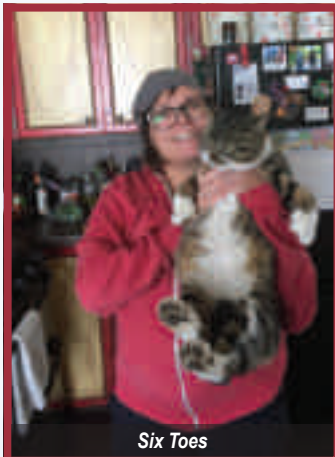
Tom & Maddie with the other herd!



Auntie Karen. Helping with food I think!



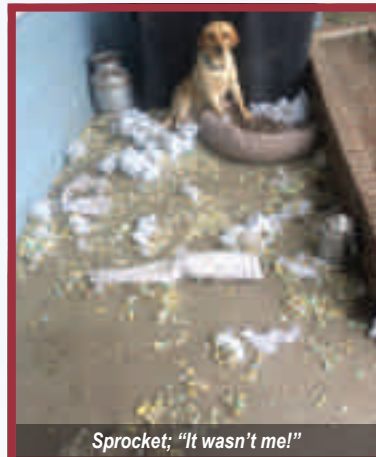
Joan Tomas (pictured) & Joan Sparrow do our sale accounting.



Six Toes



One Tree Pasture



Sprocket; "It wasn't me!"



Boys of Summer



They grow fast on Jersey milk



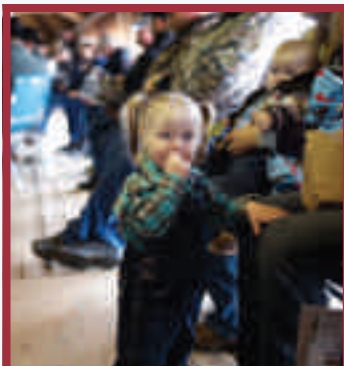
Milking Crew



Grazing Pigs



Happy Crew



**Benlock Alaskan 122C****36 Benlock Alaskan 122C**

1876917 TOM 122C 09/05/2015 Male AI

HF KODIAK 5R
HF ALASKAN 94T 1411905
 HF ECHO 112R

SANDY BAR ADVANTAGE 43M
 WILBAR RUBY 955N
 BT RIGHT TIME 24J
 HF ECHO 187N

SMW ULYSSES 7U
BENLOCK EVENING TINGE 22X 1582588
 BENLOCK EVENING TINGE 19H

S A V NET WORTH 4200
 SMW MISTRESS 22P
 S A F FAME
 BENLOCK EVENING TINGE 80F

| EPDS | BW | WW | YW | MM | TM | ACT BW | ADJ 205 WW | CE |
|------|-----|----|----|----|----|--------|------------|-----|
| | 1.0 | 41 | 68 | 10 | 31 | 78 | 635 | *** |

Such and awesome bull. We transplanted his full sister this summer.

**Benlock Alaskan 64C****37 Benlock Alaskan 64C**

1876880 TOM 64C 02/05/2015 Male

HF KODIAK 5R
HF ALASKAN 94T 1411905
 HF ECHO 112R

SANDY BAR ADVANTAGE 43M
 WILBAR RUBY 955N
 BT RIGHT TIME 24J
 HF ECHO 187N

BENLOCK DATELINE 127L
BENLOCK ERICA 25P 1230696
 BENLOCK ERICA 69G

VERMILION DATELINE 7078
 BENLOCK DELIA 61J
 HF HURRICANE 10E
 BENLOCK ERICA 8Z

| EPDS | BW | WW | YW | MM | TM | ACT BW | ADJ 205 WW | CE |
|------|-----|----|----|----|----|--------|------------|-----|
| | 1.3 | 46 | 74 | 21 | 45 | 78 | 723 | *** |

Maternal brother to Tibetan. This bull offers many things, and is also the quietest bull in the group.

**Benlock Alaskan 15C****38 Benlock Alaskan 15C**

1876444 TOM 15C 19/04/2015 Male

HF KODIAK 5R
HF ALASKAN 94T 1411905
 HF ECHO 112R

SANDY BAR ADVANTAGE 43M
 WILBAR RUBY 955N
 BT RIGHT TIME 24J
 HF ECHO 187N

BENLOCK SPECK 63X
BENLOCK EVENING TINGE 95A 1761883
 BENLOCK EVENING TINGE 109X

BENLOCK TOUCH DOWN 107S
 BENLOCK ATALANTA 17T
 SMW ULYSSES 7U
 BENLOCK EVENING TINGE 22T

| EPDS | BW | WW | YW | MM | TM | ACT BW | Nov. 3 WW | CE |
|------|-----|----|-----|----|----|--------|-----------|-----|
| | 3.5 | 68 | 104 | 11 | 36 | 82 | N/A | *** |

15C reflects a lot of our top bloodlines.



Benlock Cucumber 214C

39 Benlock Cucumber 214C

1877000 TOM 214C 28/05/2015 Male

MC CUMBER 8R101 RITO 1136
CRESCENT CREEK ENTREPRENEUR105A 1759306
 CRESCENT CREEK HEROINE 119U

SINCLAIR ENTREPRENEUR 8R101
 MISS WIX 7176 OF MC CUMBER
 MINBURN MAIN EVENT 82R
 CRESCENT CREEK HEROINE 13L

HF ALASKAN 94T
BENLOCK ERICA 152Z 1701229
 BENLOCK ERICA 25X

HF KODIAK 5R
 HF ECHO 112R
 BENLOCK MONTANA 67N
 BENLOCK ERICA 29P

| EPDS | BW | WW | YW | MM | TM | ACT BW | ADJ 205 WW | CE |
|------|-----|----|----|----|----|--------|------------|-----|
| | 2.3 | 47 | 79 | 13 | 35 | 85 | 698 | *** |

Carries a perfect profile.

40 Benlock Scotty 119C

1876915 TOM 119C 09/05/2015 Male

MVF FREIGHTLINER 630T
BENLOCK SCOTTY 1Y 1640371
 MVF ELLEN 48N

CONNEALY FREIGHTLINER
 MVF ELLEN 26N
 GDAR SVF TRAVELER 234D
 BOTANY ANGUS ELLEN 6G

BENLOCK TOUCH DOWN 22R
BENLOCK ELBA 174Y 1640459
 BENLOCK ELBA 83M

YOUNG DALE TOUCH DOWN 36M
 BENLOCK ATLANTA 5N
 NORTHERN IMPROVEMENT 4480 GF
 HOMESTEADER ELBA 2C

| EPDS | BW | WW | YW | MM | TM | ACT BW | ADJ 205 WW | CE |
|------|-----|----|----|----|----|--------|------------|-----|
| | 2.0 | 45 | 76 | 16 | 39 | 84 | 629 | *** |

Stylish calving ease package.



Benlock Scotty 119C



Lot 41 - TOM 269C

Speckle Parks

Speckles continue to gain respect at the yards, in productions, or on a plate. We bought our picks out of Codiak's last year bull sale. Between Putnam and Be My Guest, your getting the best in Speckle genetics you can find. These cattle will do much more than just catch your imagination.



Speckle Park Bred Speckle

41 TOM 269C June 18, 2015

SIRE: Crescent Creek Entrepreneur 105A **DAM:** Commercial Speckle Park

Favorable to AI Breeding to Codiak Putnam on July 15, 2016; then exposed to Codiak Be My Guest GNK 59B

Angus Bred Speckle Park

42 TOM 5C April 16, 2015

SIRE: Panda

DAM: Benlock Grace 56Y

Favorable to AI Breeding to Codiak Putnam on July 15, 2016; then exposed to Codiak Be My Guest GNK 59B

43 TOM 33C April 27, 2015

SIRE: Angus

DAM: Taste Test daughter 30U

Favorable to AI Breeding to Codiak Putnam on July 15, 2016; then exposed to Codiak Be My Guest GNK 59B

44 TOM 39C April 29, 2015

SIRE: Wagyu

DAM: Benlock Evenin Tinge 89A

Favorable to AI Breeding to Codiak Putnam on July 15, 2016; then exposed to Codiak Be My Guest GNK 59B

45 TOM 65C May 3, 2015

SIRE: Angus

DAM: G18

Favorable to AI Breeding to Codiak Putnam on July 15, 2016; then exposed to Codiak Be My Guest GNK 59B

46 TOM 95C May 7, 2015

SIRE: Angus

DAM: G6

Favorable to AI Breeding to Codiak Putnam on July 15, 2016; then exposed to Codiak Be My Guest GNK 59B

47 TOM 115C May 9, 2015

SIRE: Angus

DAM: Sim Angus Cross

Favorable to AI Breeding to Codiak Putnam on July 15, 2016; then exposed to Codiak Be My Guest GNK 59B

48 TOM 121C May 9, 2015

SIRE: Angus

DAM: G10

Favorable to AI Breeding to Codiak Putnam on July 15, 2016; then exposed to Codiak Be My Guest GNK 59B

49 TOM 131C May 10, 2015 *Registered

SIRE: Benlock Alaskan 12A

DAM: Benlock Evening Tinge 204A

Exposed from July 17, 2016 to Codiak Be My Guest GNK 59B

50 TOM 136C May 11, 2015

SIRE: Angus

DAM: G23

Favorable to AI Breeding to Codiak Putnam on July 15, 2016; then exposed to Codiak Be My Guest GNK 59B

51 TOM 144C May 12, 2015

SIRE: Angus

DAM: LV 56Y

Favorable to AI Breeding to Codiak Putnam on July 15, 2016; then exposed to Codiak Be My Guest GNK 59B

52 TOM 150C May 13, 2015 *Registered

SIRE: Crescent Creek Entrepreneur 105A **DAM:** Benlock Atalanta 22Z

Exposed from July 17, 2016 to Codiak Be My Guest GNK 59B

Angus Bred Speckle Park

| | | |
|--|-----------------|--|
| 53 | TOM 165C | May 16, 2015 |
| SIRE: Angus | | DAM: G20 |
| Favorable to AI Breeding to Codiak Putnam on July 15, 2016; then exposed to Codiak Be My Guest GNK 59B | | |
| 54 | TOM 176C | May 18, 2015 |
| SIRE: Angus | | DAM: Benlock Evening Tinge 95T |
| Favorable to AI Breeding to Codiak Putnam on July 15, 2016; then exposed to Codiak Be My Guest GNK 59B | | |
| 55 | TOM 220C | May 30, 2015 |
| SIRE: Angus | | DAM: TOM 79Y |
| AI Bred to Codiak Putnam on July 15, 2016; then exposed to Codiak Be My Guest GNK 59B | | |
| 56 | TOM 230C | June 1, 2015 |
| SIRE: Angus | | DAM: G43 |
| Favorable to AI Breeding to Codiak Putnam on July 15, 2016; then exposed to Codiak Be My Guest GNK 59B | | |
| 57 | TOM 233C | June 2, 2015 |
| SIRE: Angus | | DAM: LV 55Y |
| Favorable to AI Breeding to Codiak Putnam on July 15, 2016; then exposed to Codiak Be My Guest GNK 59B | | |
| 58 | TOM 268C | June 17, 2015 |
| SIRE: Angus | | DAM: Benlock Tip Top 93N |
| Exposed from July 17, 2015 to Codiak Be My Guest GNK 59B | | |
| 59 | TOM 274C | June 20, 2015 |
| SIRE: Angus | | DAM: G24 |
| Exposed from July 17, 2015 to Codiak Be My Guest GNK 59B | | |
| 60 | TOM 281C | June 27, 2015 *Registered |
| SIRE: HF Alaskan | | DAM: Benlock Evening Tinge 109X |
| Exposed from July 17, 2016 to Codiak Be My Guest GNK 59B | | |
| 61 | TOM 282C | June 28, 2015 |
| SIRE: Angus | | DAM: Benlock Grace 90X |
| Exposed from July 17, 2016 to Codiak Be My Guest GNK 59B | | |
| 62 | TOM 287C | June 29, 2015 |
| SIRE: Angus | | DAM: LV 71Y |
| Favorable to AI Breeding to Codiak Putnam on July 15, 2016; then exposed to Codiak Be My Guest GNK 59B | | |



Kodiak Putnam



Camouflage Speckles



Speckles are easy calving



Speckle calf in calving pasture



Shawnda & her Speckles



Angus Bred Angus

| | | | |
|--|-----------------|--|--------------------|
| 63 | RYE 13C | April 18, 2015 | *Registered |
| SIRE: H F Alaskan | | DAM: Benlock Elba 228A | |
| AI bred Jindra Double Vision on July 15, 2016; then exposed to Benlock Thrive 24B | | | |
| 64 | TOM 16C | April 19, 2015 | *Registered |
| SIRE: H F Alaska | | DAM: Benlock Rosebud 161A | |
| Favorable to AI July 15, 2016 to Coleman Knight; then exposed to Crescent Creek Entrepreneur 105A & Benlock Oklahoma 22B | | | |
| 65 | TOM 20C | April 22, 2015 | *Registered |
| SIRE: S McCoy 124 | | DAM: Benlock Evening Tinge 87A | |
| Favorable to AI July 15, 2016 to Coleman Knight; then exposed to Benlock Thrive 24B | | | |
| 66 | TOM 26C | April 23, 2015 | *Registered |
| SIRE: H F Alaskan | | DAM: Benlock Ruby 193A | |
| AI bred Jindra Double Vision July 15; then exposed to Crescent Creek Entrepreneur 105A & Benlock Oklahoma 22B | | | |
| 67 | TOM 28C | April 24, 2015 | |
| SIRE: Angus | | DAM: Benlock Atalanta 80Y | |
| Exposed from July 15, 2016 to Benlock Thrive 24B | | | |
| 68 | TOM 40C | April 28, 2015 | |
| SIRE: Wagyu | | DAM: Benlock Evening Tinge 216A | |
| Favorable to AI July 15, 2016 to Coleman Knight; then exposed to Benlock Thrive 24B | | | |
| 69 | TOM 48C | April 30, 2015 | |
| SIRE: Wagyu | | DAM: Benlock Evening Tinge 234A | |
| AI bred to Jindra Double Vision July 15, 2016; then exposed to Benlock Thrive 24B | | | |
| 70 | TOM 73C | May 4, 2015 | |
| SIRE: Angus | | DAM: G5 | |
| Favorable to AI July 15, 2016 to Jindra Double Vision; then exposed to Benlock Thrive 24B | | | |
| 71 | TOM 80C | May 5, 2015 | *Registered |
| SIRE: Benlock Stoked 211Y | | DAM: Benlock Queen Lass 168X | |
| AI bred July 15, 2016 to KR Cash; then exposed to Benlock Thrive 24B | | | |
| 72 | TOM 87C | May 5, 2015 | |
| SIRE: Angus | | DAM: G29 | |
| Favorable to AI July 15, 2016 to KR Cash; then exposed to Benlock Thrive 24B | | | |
| 73 | TOM 91C | May 6, 2015 | *Registered |
| SIRE: Crescent Creek Entrepreneur 105A | | DAM: Benlock Elba 66Z | |
| AI bred July 15, 2016 to Coleman Knight; then exposed to Benlock Thrive 24B | | | |
| 74 | TOM 100C | May 7, 2015 | *Registered |
| SIRE: S McCoy 124 | | DAM: Benlock Evening Tinge 67A | |
| AI bred July 15, 2016 to KR Cash; then exposed to Benlock Thrive 24B | | | |
| 75 | TOM 160C | May 15, 2015 | *Registered |
| SIRE: Crescent Creek Entrepreneur 105A | | DAM: Benlock Atalanta 163Z | |
| AI bred July 15, 2016 to Coleman Knight; then exposed to Benlock Thrive 24B | | | |
| 76 | TOM 161C | May 15, 2015 | |
| SIRE: Angus | | DAM: LV 67Y | |
| Favorable to AI July 15, 2016 to KR Cash; then exposed to Benlock Thrive 24B | | | |

Angus Bred Angus

| | | | |
|---|-----------------|--|--------------------|
| 77 | TOM 163C | May 16, 2015 | *Registered |
| SIRE: H F Alaskan | | DAM: Benlock Erica 87P | |
| AI bred July 15, 2016 to Coleman Knight; then exposed to Benlock Thrive 24B | | | |
| 78 | TOM 167C | May 16, 2015 | *Registered |
| SIRE: Benlock Blackberry 58Z | | DAM: Benlock Erica 141A | |
| Exposed July 15, 2016 to Benlock Thrive 24B | | | |
| 79 | TOM 174C | May 18, 2015 | |
| SIRE: Benlock Blackberry 58Z | | DAM: 165A Alaskan Daughter | |
| Favorable to AI July 15, 2016 to Jindra Double Vision; then exposed to Benlock Thrive 24B | | | |
| 80 | TOM 196C | May 22, 2015 | |
| SIRE: Angus | | DAM: Benlock Blackclass 19T | |
| Favorable to AI July 15, 2016 to KR Cash; then exposed to Benlock Thrive 24B | | | |
| 81 | TOM 197C | May 22, 2015 | *Registered |
| SIRE: Crescent Creek Entrepreneur 105A | | DAM: Benlock Erica 232Z | |
| Favorable to AI July 15, 2016 to KR Cash; then exposed to Benlock Thrive 24B | | | |
| 82 | TOM 201C | May 23, 2015 | |
| SIRE: Angus | | DAM: G20 | |
| Favorable to AI July 15, 2016 to KR Cash; then exposed to Benlock Thrive 24B | | | |
| 83 | TOM 219C | May 30, 2015 | *Registered |
| SIRE: Benlock Scotty 1Y | | DAM: Benlock Atalanta 147T | |
| AI bred July 15, 2016 to KR Cash; then exposed to Benlock Thrive 24B | | | |
| 84 | TOM 222C | May 31, 2015 | |
| SIRE: Angus | | DAM: 16Z | |
| Favorable to AI July 15, 2016 to Coleman Knight; then exposed to Benlock Thrive 24B | | | |
| 85 | TOM 224C | May 31, 2015 | *Registered |
| SIRE: Crescent Creek Entrepreneur 105A | | DAM: Benlock Evening Tinge 109Z | |
| AI bred July 15, 2016 to KR Cash; then exposed to Benlock Thrive 24B | | | |
| 86 | TOM 225C | May 31, 2015 | *Registered |
| SIRE: Kung Fu Panda | | DAM: Benlock Erica 20W | |
| Favorable to AI July 15, 2016 to Jindra Double Vision; then exposed to Benlock Thrive 24B | | | |
| 87 | TOM 231C | June 1, 2015 | |
| SIRE: Benlock Grid Iron | | DAM: 306A | |
| Exposed after July 15, 2016 to Benlock Thrive 24B | | | |
| 88 | TOM 234C | June 2, 2015 | |
| SIRE: Angus | | DAM: LV 60Y | |
| Favorable to July 15, 2016 to KR Cash; then exposed to Benlock Thrive 24B | | | |
| 89 | TOM 241C | June 3, 2015 | |
| SIRE: Angus | | DAM: Benlock Evening Tinge 203Y | |
| Favorable to July 15, 2016 to Jindra Double Vision; then exposed to Benlock Thrive 24B | | | |



Coleman Knight



KR Cash



Jindra Double Vision

***Registered**

Registered & transferable, time tested genetics, without the high cost. Calving with mother nature is great, however tough on purebred female sales.

Diamonds in the rough, bred right, sell with a fast return on investment.



Benlock Blacklass 59D

90 Benlock Blacklass 59D

1934375 TOM 59D 27/04/2016 Female

J SQUARE S FIREMAN 14Y
HF FIREMAN 280B 1799317
HF ROSEBUD 93X

MJ ESCALADE 2W
BROOKMORE ENCHANTRESS 229S
HF EL TIGRE 28U
HF ROSEBUD 97P

BENLOCK TASTE TEST 8P
BENLOCK BLACKLASS 131Z 1701212
BENLOCK BLACKLASS 53W

YOUNG DALE TOUCH DOWN 36M
BENLOCK ATALANTA 19D
BENLOCK TOUCH DOWN 107S
BENLOCK BLACKLASS 92P

| EPDS | BW | WW | YW | MM | TM |
|------|-----|----|----|----|----|
| | 3.4 | 49 | 75 | 20 | 44 |

Sire, our new herd bull owned with Tom and Vicki Flanigan, know at Benlock as Firebug, as we think he's going to light a few fires. Im not a show guy but I think this heifer could be competitive. Bonus is she has a sweet temperament and would make a great Junior project.



Benlock Blackbird 28D

91 Benlock Blackbird 28D

1934189 TOM 28D 23/04/2016 Female

HF KODIAK 5R
HF ALASKAN 94T 1411905
HF ECHO 112R

SANDY BAR ADVANTAGE 43M
WILBAR RUBY 955N
BT RIGHT TIME 24J
HF ECHO 187N

BENLOCK BLACKBERRY 39T
BENLOCK BLACKBIRD 70Z 1701203
BENLOCK BLACKBIRD 119U

BENLOCK BLACKBERRY 110P
BENLOCK ATLANTA 25N
BENLOCK MONTANA 67N
BENLOCK BLACKBIRD 3K

| EPDS | BW | WW | YW | MM | TM |
|------|-----|----|----|----|----|
| | 1.9 | 45 | 72 | 17 | 39 |

The 119U cow is one of our best, with 2 sons in our own bull battery in Alaskan 12A and Oklahoma 22B. It truly pains me to let her go, as I know what this combo can do, but I wanted to honour and celebrate the old bull with a great one from his final season.



Lot 95 as a baby, rescued from the cold mud hole.

92 Benlock Atalanta 175D

1934206 TOM 175D 12/05/2016 Female

HF TIGER 5T
BENLOCK KUNG FU PANDA 72X 1582803
BENLOCK EVENING TINGE 15U

HF KODIAK 5R
HF ECHO 84R
BENLOCK MONTANA 67N
BENLOCK EVENING TINGE 2P

BENLOCK TOUCH DOWN 22R
BENLOCK ATALANTA 196Z 1700774
BENLOCK ATALANTA 49S

YOUNG DALE TOUCH DOWN 36M
BENLOCK ATALANTA 5N
BENLOCK EASY TOUCH 6P
BENLOCK ATALANTA 30P

| EPDS | BW | WW | YW | MM | TM |
|------|-----|----|----|----|----|
| | 2.4 | 52 | 88 | 20 | 50 |

Typical Panda quality. 30P raised our top seller 2 years ago. 49S son sells this year as Lot 6. 196Z's first daughter was our feature display female at the bottom of the stairs from the loft at last years sale.

93 Benlock Evening Tinge 17D

1950550 TOM 17D 21/04/2016 Female

CONNEALY REFLECTION

JINDRA DOUBLE VISION 1764385

HOFF RACHEL 8312 405

BON VIEW NEW DESIGN 878

HAPPY GRILL OF CONANGA 6260

HOFF LIMITED EDITION SC 594

HOFF MISS EXPO S C 4223

YOUNG DALE XCALIBER 32X

BENLOCK EVENING TINGE 2B 1950549

BENLOCK EVENING TINGE 128Z

YOUNG DALE KNOCK OUT 134U

BROOKMORE TIBBIE 222T

HF ALASKAN 94T

BENLOCK EVENING TINGE 62S

| EPDS | BW | WW | YW | MM | TM |
|------|-----|----|-----|----|----|
| | 2.4 | 59 | 106 | 20 | 50 |

Our heifers calve on grass and I was so pleased with the job Double Vision did for us. The 62S cow is one of the most complete cows we've ever owned.



Benlock Evening Tinge 17D

94 Benlock Elba 171D

1942450 TOM 171D 12/05/2016 Female

BENLOCK KUNG FU PANDA 72X

BENLOCK TIBETAN 24A 1761740

BENLOCK ERICA 25P

HF TIGER 5T

BENLOCK EVENING TINGE 15U

BENLOCK DATELINE 127L

BENLOCK ERICA 69G

SMW ULYSSES 7U

BENLOCK ELBA 137Z 1700733

BENLOCK ELBA 83M

S A V NET WORTH 4200

SMW MISTRESS 22P

NORTHERN IMPROVEMENT 4480 GF

HOMESTEADER ELBA 2C

| EPDS | BW | WW | YW | MM | TM |
|------|-----|----|----|----|----|
| | 1.9 | 34 | 58 | 25 | 42 |

I love my Tibetan calves, this "little one" is a bit green for the sale, but for the person that sees through that they'll be well rewarded.



Last year's heifer to Jackson Aims with this years Lot 95.

95 Benlock Paint 22D

TOM 22D 22/04/2016 Female

MC CUMBER 8R101 RITO 1136

CRESCENT CREEK ENTREPRENEUR105A 1759306

CRESCENT CREEK HEROINE 119U

SINCLAIR ENTREPRENEUR 8R101

MISS WIX 7176 OF MC CUMBER

MINBURN MAIN EVENT 82R

CRESCENT CREEK HEROINE 13L

SPECKLE PARK COMMERCIAL COW

| EPDS | BW | WW | YW | MM | TM |
|------|-----|----|----|----|----|
| | 1.4 | 47 | 78 | 21 | 45 |

Found cold and stuck in the mud hole, she was brought in, washed, warmed up, and wrapped in Shawndas green scarf. Took a picture not realizing the paint pails were in the background from renovating. All you need is a dash of Paint.



Benlock Paint 22D

96 Benlock Alaskan 21C

1876468 TOM 21C 22/04/2015 Male

HF KODIAK 5R
HF ALASKAN 94T 1411905
 HF ECHO 112R

SANDY BAR ADVANTAGE 43M
 WILBAR RUBY 955N
 BT RIGHT TIME 24J
 HF ECHO 187N

BENLOCK SPECK 63X
BENLOCK ATALANTA 97A 1761741
 BENLOCK ATALANTA 28P

BENLOCK TOUCH DOWN 107S
 BENLOCK ATALANTA 17T
 YOUNG DALE TOUCH DOWN 36M
 BENLOCK ATALANTA 76J

| EPDS | BW | WW | YW | MM | TM | ACT BW | ADJ 205 WW | CE |
|------|-----|----|----|----|----|--------|------------|----|
| | 4.4 | 46 | 71 | 11 | 34 | 89 | N/A | * |

97 Benlock Cucumber 43C

1876862 TOM 43C 29/04/2015 Male

MC CUMBER 8R101 RITO 1136
CRESCENT CREEK ENTREPRENEUR105A 1759306
 CRESCENT CREEK HEROINE 119U

SINCLAIR ENTREPRENEUR 8R101
 MISS WIX 7176 OF MC CUMBER
 MINBURN MAIN EVENT 82R
 CRESCENT CREEK HEROINE 13L

HF ALASKAN 94T
BENLOCK EVENING TINGE 128Z 1700775
 BENLOCK EVENING TINGE 62S

HF KODIAK 5R
 HF ECHO 112R
 BAR A GRID IRON 25P
 BENLOCK EVENING TINGE 120N

| EPDS | BW | WW | YW | MM | TM | ACT BW | ADJ 205 WW | CE |
|------|-----|----|----|----|----|--------|------------|-----|
| | 0.9 | 40 | 70 | 9 | 28 | 78 | 622 | *** |

98 Benlock Cucumber 67C

1876882 TOM 67C 03/05/2015 Male

MC CUMBER 8R101 RITO 1136
CRESCENT CREEK ENTREPRENEUR105A 1759306
 CRESCENT CREEK HEROINE 119U

SINCLAIR ENTREPRENEUR 8R101
 MISS WIX 7176 OF MC CUMBER
 MINBURN MAIN EVENT 82R
 CRESCENT CREEK HEROINE 13L

SMW ULYSSES 7U
BENLOCK ELBA 234Z 1700763
 BENLOCK ELBA 109R

S A V NET WORTH 4200
 SMW MISTRESS 22P
 YOUNG DALE KRUGERRAND 3L
 BENLOCK ELBA 101M

| EPDS | BW | WW | YW | MM | TM | ACT BW | ADJ 205 WW | CE |
|------|-----|----|----|----|----|--------|------------|----|
| | 3.1 | 52 | 83 | 14 | 39 | 92 | 728 | * |

99 Benlock Ulysses 88C

1900841 TOM 88C 05/05/2015 Male

SMW ULYSSES 7U
BENLOCK ULYSSES 163Y 1640432
 PARK LAND MO 51K

S A V NET WORTH 4200
 SMW MISTRESS 22P
 JNH RANCHERS PROMISE 99F
 MORRISON MO 51F

BENLOCK TOUCH DOWN 22R
BENLOCK ERICA 54U 1468877
 BENLOCK ERICA 87P

YOUNG DALE TOUCH DOWN 36M
 BENLOCK ATLANTA 5N
 FCR TIMELESS RITO 48M
 YOR MAX ERICA 6H

| EPDS | BW | WW | YW | MM | TM | ACT BW | ADJ 205 WW | CE |
|------|-----|----|----|----|----|--------|------------|----|
| | 2.6 | 50 | 72 | 13 | 38 | 84 | 684 | ** |

100 TOM 101C

*Sells Unregistered 7/05/2015 Male

DNA PENDING

YOUNG DALE KRUGERRAND 3L
BENLOCK ELBA 90P 1230933
 BENLOCK ELBA 83M

YOUNG DALE KRUGERRAND 2H
 FREYBURN BLACKBIRD 41J
 NORTHERN IMPROVEMENT 4480 GF
 HOMESTEADER ELBA 2C

| EPDS | BW | WW | YW | MM | TM | ACT BW | ADJ 205 WW | CE |
|------|----|----|----|----|----|--------|------------|----|
| | | | | | | 95 | N/A | * |

101 Benlock Cucumber 105C

1876907 TOM 105C 07/05/2015 Male

MC CUMBER 8R101 RITO 1136
CRESCENT CREEK ENTREPRENEUR105A 1759306
 CRESCENT CREEK HEROINE 119U

SINCLAIR ENTREPRENEUR 8R101
 MISS WIX 7176 OF MC CUMBER
 MINBURN MAIN EVENT 82R
 CRESCENT CREEK HEROINE 13L

BENLOCK TOUCH DOWN 22R
BENLOCK BLACKLASS 214Z 1700723
 BENLOCK BLACKLASS 42K

YOUNG DALE TOUCH DOWN 36M
 BENLOCK ATLANTA 5N
 OLE SASKALTA RITO 133D
 BENLOCK BLACKLASS 21Z

| EPDS | BW | WW | YW | MM | TM | ACT BW | ADJ 205 WW | CE |
|------|-----|----|----|----|----|--------|------------|----|
| | 2.9 | 43 | 70 | 12 | 33 | 87 | 639 | ** |



New Stauffer Ranch herd bull. Vias for top of hill.



Some of our Leo Corruthers Pasture gets pretty thick, even for porcupines!

102 Benlock Alaskan 110C

1876910 TOM 110C 08/05/2015 Male

HF KODIAK 5R
HF ALASKAN 94T 1411905
 HF ECHO 112R

SANDY BAR ADVANTAGE 43M
 WILBAR RUBY 955N
 BT RIGHT TIME 24J
 HF ECHO 187N

REMINGTON BANDY 236S
DOUBLE AA LADY 114'09 1520732
 DOUBLE AA LADY 357'06

ANGUS ACRES BANDY 96X
 DMM MISS DYNA ESSENCE 7M
 DOUBLE AA BARDOLINE 47'04
 DOUBLE AA LADY 76'99

| EPDS | BW | WW | YW | MM | TM | ACT BW | ADJ 205 WW | CE |
|------|-----|----|----|----|----|--------|------------|----|
| | 2.3 | 47 | 72 | 12 | 36 | 84 | 717 | ** |

103 Benlock Cucumber 117C

1876914 TOM 117C 09/05/2015 Male

MC CUMBER 8R101 RITO 1136
CRESCENT CREEK ENTREPRENEUR105A 1759306
 CRESCENT CREEK HEROINE 119U

SINCLAIR ENTREPRENEUR 8R101
 MISS WIX 7176 OF MC CUMBER
 MINBURN MAIN EVENT 82R
 CRESCENT CREEK HEROINE 13L

YOUNG DALE BARNEY 2X
BENLOCK BLACKCLASS 134Z 1700723
 BENLOCK BLACKCLASS 61P

S A V 004 TRAVELER 8649
 YOUNG DALE ERICA 19U
 YOUNG DALE KRUGERRAND 3L
 BENLOCK BLACKCLASS 18M

| EPDS | BW | WW | YW | MM | TM | ACT BW | ADJ 205 WW | CE |
|------|-----|----|----|----|----|--------|------------|-----|
| | 1.8 | 38 | 68 | 8 | 26 | 72 | 525 | *** |

104 Benlock Alaskan 123C

1876918 TOM 123C 09/05/2015 Male

HF KODIAK 5R
HF ALASKAN 94T 1411905
 HF ECHO 112R

SANDY BAR ADVANTAGE 43M
 WILBAR RUBY 955N
 BT RIGHT TIME 24J
 HF ECHO 187N

BENLOCK MONTANA 67N
BENLOCK EVENING TINGE 124W 1525478
 BENLOCK EVENING TINGE 13L

YOUNG DALE KRUGERRAND 3L
 WILBAR RUBY 548L
 BT DIRECTION 65D
 BENLOCK EVENING TINGE 41E

| EPDS | BW | WW | YW | MM | TM | ACT BW | ADJ 205 WW | CE |
|------|-----|----|----|----|----|--------|------------|-----|
| | 1.6 | 56 | 86 | 16 | 46 | 87 | 795 | *** |

105 Benlock Ulysses 130C

1900837 TOM 130C 10/05/2015 Male

SMW ULYSSES 7U
BENLOCK ULYSSES 163Y 1640432
 PARK LAND MO 51K

S A V NET WORTH 4200
 SMW MISTRESS 22P
 JNH RANCHERS PROMISE 99F
 MORRISON MO 51F

BENLOCK BLACKBERRY 39T **BENLOCK ATALANTA 97X 1586443**
 BENLOCK ATALANTA 5T

BENLOCK BLACKBERRY 110P
 BENLOCK ATLANTA 25N
 BENLOCK TASTE TEST 8P
 BENLOCK ATLANTA 17P

| EPDS | BW | WW | YW | MM | TM | ACT BW | ADJ 205 WW | CE |
|------|-----|----|----|----|----|--------|------------|----|
| | 3.6 | 50 | 74 | 17 | 43 | 85 | 670 | * |

106 Benlock Cucumber 145C

1876941 TOM 145C 12/05/2015 Male

MC CUMBER 8R101 RITO 1136
CRESCENT CREEK ENTREPRENEUR105A 1759306
 CRESCENT CREEK HEROINE 119U

SINCLAIR ENTREPRENEUR 8R101
 MISS WIX 7176 OF MC CUMBER
 MINBURN MAIN EVENT 82R
 CRESCENT CREEK HEROINE 13L

SMW ULYSSES 7U
BENLOCK ATALANTA 206Z 1701211
 BENLOCK ATALANTA 47W

S A V NET WORTH 4200
 SMW MISTRESS 22P
 BENLOCK TOUCH DOWN 107S
 BENLOCK ATLANTA 36N

| EPDS | BW | WW | YW | MM | TM | ACT BW | ADJ 205 WW | CE |
|------|-----|----|----|----|----|--------|------------|----|
| | 3.2 | 47 | 78 | 13 | 36 | 87 | 719 | * |

107 Benlock Cucumber 147C

1876943 TOM 147C 12/05/2015 Male

MC CUMBER 8R101 RITO 1136
CRESCENT CREEK ENTREPRENEUR105A 1759306
 CRESCENT CREEK HEROINE 119U

SINCLAIR ENTREPRENEUR 8R101
 MISS WIX 7176 OF MC CUMBER
 MINBURN MAIN EVENT 82R
 CRESCENT CREEK HEROINE 13L

HF ALASKAN 94T
BENLOCK ATALANTA 32Z 1700737
 BENLOCK ATLANTA 36N

HF KODIAK 5R
 HF ECHO 112R
 TC STOCKMAN 36S
 BENLOCK ATALANTA 19D

| EPDS | BW | WW | YW | MM | TM | ACT BW | ADJ 205 WW | CE |
|------|-----|----|----|----|----|--------|------------|----|
| | 3.1 | 47 | 78 | 11 | 34 | 87 | 663 | * |



Blackberry



HF Alaskan pictured at 9.5 years of age.

108 Benlock Panda 156C

1876967 TOM 156C 14/05/2015 Male

HF TIGER 5T

BENLOCK KUNG FU PANDA 72X 1582803
BENLOCK EVENING TINGE 15U

HF KODIAK 5R

HF ECHO 84R
BENLOCK MONTANA 67N
BENLOCK EVENING TINGE 2P

SMW ULYSSES 7U

BENLOCK BLACKBIRD 101Y 1649790
BENLOCK BLACKBIRD 26NS A V NET WORTH 4200
SMW MISTRESS 22P
S A F 598 BANDO 5175
BENLOCK BLACKBIRD 45K

| EPDS | BW | WW | YW | MM | TM | ACT BW | ADJ 205 WW | CE |
|------|-----|----|----|----|----|--------|------------|----|
| | 3.5 | 52 | 89 | 17 | 42 | 87 | 631 | * |

109 Benlock Cucumber 175C

1876979 TOM 175C 18/05/2015 Male

MC CUMBER 8R101 RITO 1136

CRESCENT CREEK ENTREPRENEUR105A 1759306
CRESCENT CREEK HEROINE 119USINCLAIR ENTREPRENEUR 8R101
MISS WIX 7176 OF MC CUMBER
MINBURN MAIN EVENT 82R
CRESCENT CREEK HEROINE 13L

BENLOCK TOUCH DOWN 22R

BENLOCK ATALANTA 260Z 1701183
BENLOCK ATALANTA 147TYOUNG DALE TOUCH DOWN 36M
BENLOCK ATLANTA 5N
BENLOCK MONTANA 100N
BENLOCK ATALANTA 55M

| EPDS | BW | WW | YW | MM | TM | ACT BW | ADJ 205 WW | CE |
|------|-----|----|----|----|----|--------|------------|----|
| | 2.8 | 46 | 76 | 11 | 33 | 84 | 650 | ** |

110 Benlock Cucumber 229C

1877008 TOM 229C 01/06/2015 Male

MC CUMBER 8R101 RITO 1136

CRESCENT CREEK ENTREPRENEUR105A 1759306
CRESCENT CREEK HEROINE 119USINCLAIR ENTREPRENEUR 8R101
MISS WIX 7176 OF MC CUMBER
MINBURN MAIN EVENT 82R
CRESCENT CREEK HEROINE 13L

YOUNG DALE BARNEY 2X

BENLOCK QUEEN LASS 259Z 1701257
BENLOCK QUEEN LASS 106WS A V 004 TRAVELER 8649
YOUNG DALE ERICA 19U
BENLOCK MONTANA 67N
BENLOCK QUEEN LASS 48S

| EPDS | BW | WW | YW | MM | TM | ACT BW | ADJ 205 WW | CE |
|------|-----|----|----|----|----|--------|------------|----|
| | 2.8 | 46 | 75 | 11 | 33 | 84 | 661 | ** |

111 Benlock Scotty 253C

1877023 TOM 253C 09/06/2015 Male

MVF FREIGHTLINER 630T

BENLOCK SCOTTY 1Y 1640371
MVF ELLEN 48NCONNEALY FREIGHTLINER
MVF ELLEN 26N
GDAR SVF TRAVELER 234D
BOTANY ANGUS ELLEN 6G

BENLOCK TOUCH DOWN 22R

BENLOCK ERELITE 150Y 1640483
BENLOCK ERELITE 7PYOUNG DALE TOUCH DOWN 36M
BENLOCK ATLANTA 5N
NORTHERN IMPROVEMENT 4480 GF
BENLOCK ERELITE 45M

| EPDS | BW | WW | YW | MM | TM | ACT BW | ADJ 205 WW | CE |
|------|-----|----|----|----|----|--------|------------|----|
| | 2.3 | 46 | 76 | 14 | 38 | 86 | 652 | ** |

112 Benlock Panda 285C

1877032 TOM 285C 29/06/2015 Male

HF TIGER 5T

BENLOCK KUNG FU PANDA 72X 1582803
BENLOCK EVENING TINGE 15U

HF KODIAK 5R

HF ECHO 84R
BENLOCK MONTANA 67N
BENLOCK EVENING TINGE 2P

BENLOCK BLACKBERRY 110P

BENLOCK ATALANTA 17T 1403984
BENLOCK ATALANTA 40JSCC 561G MARKSMAN 50M
BENLOCK BLACKLASS 42K
M DOUBLE B EXECUTIVE 17G
BENLOCK ATALANTA 68CC

| EPDS | BW | WW | YW | MM | TM | ACT BW | ADJ 205 WW | CE |
|------|-----|----|----|----|----|--------|------------|----|
| | 2.6 | 49 | 80 | 15 | 39 | 90 | 669 | * |

113 Benlock Cucumber 286C

1877033 TOM 286C 29/06/2015 Male

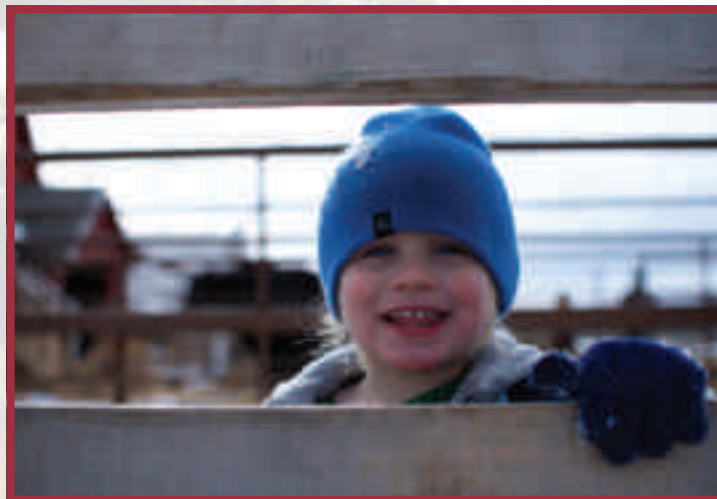
MC CUMBER 8R101 RITO 1136

CRESCENT CREEK ENTREPRENEUR105A 1759306
CRESCENT CREEK HEROINE 119USINCLAIR ENTREPRENEUR 8R101
MISS WIX 7176 OF MC CUMBER
MINBURN MAIN EVENT 82R
CRESCENT CREEK HEROINE 13L

BENLOCK BLACKBERRY 39T

BENLOCK EVENING TINGE 24Z 1700781
BENLOCK EVENING TINGE 2TBENLOCK BLACKBERRY 110P
BENLOCK ATLANTA 25N
FCR FOREMAN 36R
BENLOCK EVENING TINGE 35M

| EPDS | BW | WW | YW | MM | TM | ACT BW | ADJ 205 WW | CE |
|------|-----|----|----|----|----|--------|------------|----|
| | 2.4 | 42 | 69 | 9 | 29 | 87 | 675 | ** |





HF Alaskan 94T

Pictured going on 10 years of age, Alaskan, is simple, the best bull we've ever used.



Benlock Kung Fu Panda 72X

If your looking to add volume to your cow herd, Panda is your answer. Our lead off Lot 1 deserves the consideration of any cattleman, looking to add volume and mass.



Benlock Scotty 1Y

Scotty genetics are completely proven. Gorgeous females, extra stretch and performance. Check out Lot 9, I believe he'll outbred his sire.



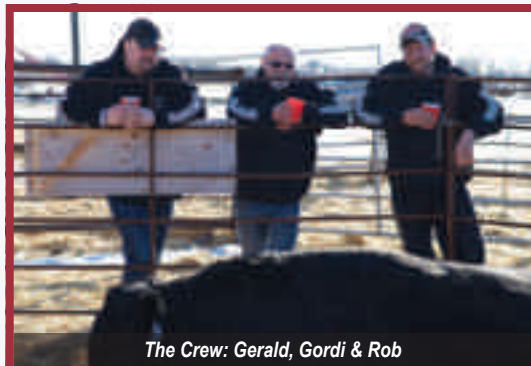
Crescent Creek Entrepreneur 105A "Cucumber"

Incredible consistency and quality. Cattle I believe will stand the test of time, in a variety of environments.





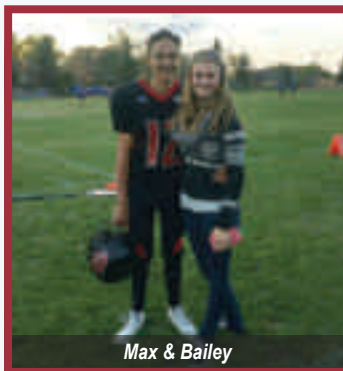
Alberta Mae



The Crew: Gerald, Gordi & Rob



Owl Cove



Max & Bailey



Shawnda & Stella



The warmth of the Caribbean!



Beef Wagon



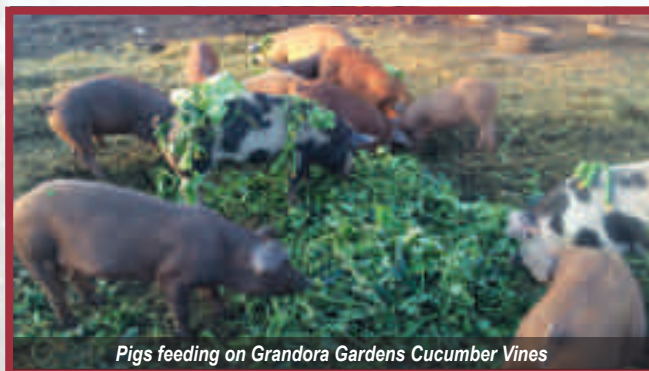
Special Birthday Surprise!!



Maddie & Angela at the Market



Keith Shologan. Doesn't seem possible for someone to be so nice, and yet still so tough on the defensive line.



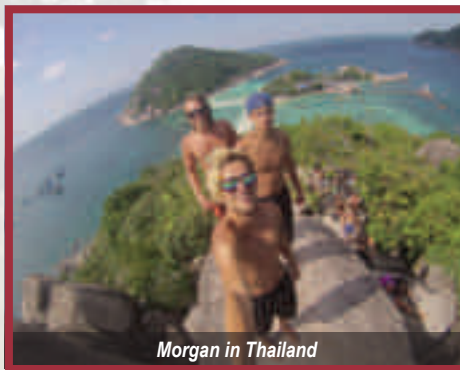
Pigs feeding on Grandora Gardens Cucumber Vines



Shawnda, Eilleen, & Auntie Karen biking & touring in P.E.I.



Free box of cats with every bull purchase!



Morgan in Thailand



Tibetian in the Display Pen

**Return Undeliverable
Canadian Addresses To:
Tom & Shawnda Blacklock
Box 145, Grandora, SK S0K 1V0
P: 306.668.2125 C: 306.230.9809
E: benlockfarms@gmail.com
www.benlockfarms.com**

Just Follow the Signs!

At Grandora Turnoff

Turn off #14 HWY on to 672 Road,
3 mile South, Right on No Name Road,
1 mile West, 1.5 mile South.

Via Vanscoy

Turn off #7 on to 672 Road,
4 mile North, 1 mile West,
1/2 mile North.



**Bill Bestrop
Celebrates his
60th Birthday
at our 2016 Sale!**