

# B

April 15, 2015  
1pm at the Ranch  
Warner, Alberta

*19th Annual*  
*Makin' the Grade*  
**BULL SALE**

**BENCHMARK**

*Your Carcass Source*

*Angus*



# BENCHMARK

## Your Carcass Source *Angus*

### **Friends and Fellow Cattlemen**

Welcome one and all to our 19th Makin' the Grade Bull Sale. We have moved our date to the middle of April. You probably are wondering why. As you know, we provide more information on our bulls than any other breeder. In order to provide you with the actual scan data and up-to-date EPDs we found we needed more time and the extra days sure makes a difference especially when you are talking January weather.

The cattle business has never been better and it seems when one considers the cow numbers, it should be good for a few years.

I read an article the other day suggesting that in the good times one should look at his cow herd and spend a few extra dollars in the area that you would really like to improve on. It made a lot of sense. So if you would like more milk in your cows, zero in on the bulls with the better milk EPDs and take them home. If it is muscle, marbling, weaning weight or whatever, the information is provided so you can make an educated decision on improving where you see it is most important. EPDs are a tool and must be used in conjunction with visual appraisal of the cattle, but I think you will agree that visual appraisal doesn't help much when it comes to what's under the hide. We suggest and from our experience, know the EPDs go a long way in explaining the economic benefits of one bull over another. Put them to use and move your program forward in the direction you see fit.

2014 has been a very good year for Benchmark. Our beef business is doing so well, we had a terrific fall bull sale, we had decent moisture, everyone is healthy and the grandkids are growing like weeds and are such a delight. Dale and Laura sent their eldest daughter off to Briercrest College, not sure Dale has got over that yet and Levi continues to get taller, much taller. We are so thankful for Dale and his family and for Heather. We are blessed at Benchmark and thank the good Lord.

Mike and I really appreciate each one of you as friends and colleagues in this great business. We have developed a program featuring the most efficient cows there is for our environment and trust those genetics as expressed by the EPDs on the cattle to generate extra profits for you, our valued customer. Profit is nice, extra profit is better.

Thanks for your consideration and do call if we can help in any way. Remember our slogan ... "Be sure your cattle measure up - use a Benchmark bull".

See you on the 15th of April and lunch is on us.

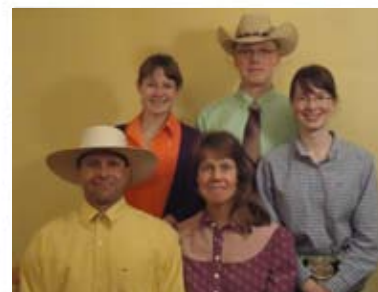
Sincerely,

*Mike & Doug Manton*

Mike 403-394-4303 Doug 403-328-6966



*The Manton Family...*



*The Ranch Crew...*

Dale, Laura, Hannah, Levi & Rebakah Fehr



Heather Peel

## BALOG AUCTION SERVICES INC.

P.O. BOX 786, LETHBRIDGE, ALBERTA T1J 3Z6  
PHONE (403) 320-1980 • FAX (403) 320-2660

### **Fellow Cattlemen,**

#### **What a fantastic year we have seen in the Livestock Industry!**

Record prices for all classes of cattle.

Now without question is the time to move your program whether it be purebred or commercial to the next level.

The Benchmark Angus Bull Sale gives you that opportunity!!

Doug and Mike have spent a lifetime producing the right kind of cattle that make a difference and add profit to your bottom line.

Their main emphasis has always been on carcass performance and maternal traits. Compare the EPD's and carcass numbers from this herd and you will see they are at the top of the breed.

www.balogauction.com  
email: bob@balogauction.com

Benchmark strives to improve their offering year after year and as you compare - it's working.

Benchmark genetics will make a difference in your herd.

Compare the bulls and the numbers and help yourself to one of the great breeding programs in the Nation.

See you at the sale!

Respectfully,  
R.C. (Bob) Balog

*Bob*

19th Annual  
**Benchmark Angus**  
*Makin' the Grade*  
**BULL SALE**

April 15, 2015 ~ 1pm  
 at the Ranch West of Warner, Alberta

**On Offer...**

62 Black Angus Yearling Bulls  
 27 Red Angus Yearling Bulls

**Sale Day Phones...**

Mike Munton .....403-394-4903  
 Robert Balog.....403-382-5727  
 Mark Lenz.....403-330-7600  
 Brad Balog.....403-642-7444  
 Louis Balog.....403-331-0611

**Sales Staff...**

Robert Balog, Auctioneer .....403-320-1980  
 Mark Lenz, Ringman .....403-330-7600  
 Brad Balog, Ringman .....403-642-7444  
 Louis Balog, Ringman .....403-331-0611  
 Dennis Ericson, Sales Consultant..780-361-9347

**Wintering Policy – Post Sale...**

Free feed until April 30, 2015.  
 Feed at \$2 per day, thereafter.  
 Bulls left at the Ranch MUST be insured.

**Insurance...**

Maureen Balog.....403-320-1980

**Lunch...**

On us, at the Ranch, prior to the sale.

*Updated weights and Scrotal measurements will be available sale day!*

**Calving Performance and EPD legend...**

AOD.....Age of Dam  
 BW.....Actual Birth Weight  
 205D...205 Day Weight  
 365D...365 Day Weight

CARCASS EPDs	ACTUAL SCAN
MARB	%IMF
REA	REA
Fat	Rib Fat
	LMY

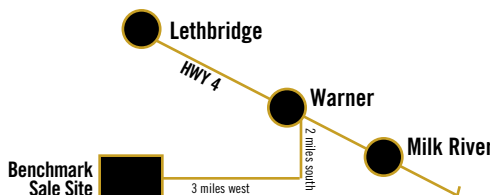
See page 22 for explanations on Carcass Ultrasound and EPD information.

**Elite Dams...**

The Canadian Elite Cow Report is an effort to identify superior cows in the Angus breed. Emphasis is placed on early puberty, breeding and early calving, followed by regularity of calving interval and above-average performance of the off spring. The Elite Cow Report requires a cow to have a minimum of five calves to determine her regularity of calving and ability to consistently produce calves with a superior weaning weight year after year. See page 39 for more details.

**Benchmark Angus**

Doug and Mike Munton  
 Box 997, Lethbridge, AB T1J 4A2  
 Phone: 403-328-6966  
 Cell: 403-394-4903  
 Email: doug@muntonco.com  
 See Catalogue on-line at www.benchmarkangus.com

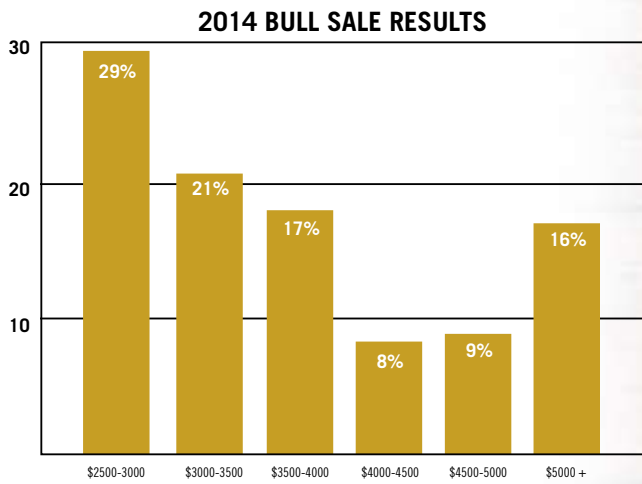


At Warner, go west down Main Street, past the school and at T intersection, turn left and go two miles south, then right and go three miles west. Look for signs.

the electronic auction market  
**team**  
 www.teamauctionsales.com

**BROADCAST LIVE ON INTERNET  
 TEAM CONTACT  
 JASON DANARD (403)519-8916**

If you require, representatives from TEAM will be happy to assist you with internet bidding. Please become comfortable with and familiar with its' features prior to sale day.





# Reference Sire

## Benchmark Midland 753

15 Sons Sell

Avg. BW: 90 lbs Avg. 205 D: 705 lbs Avg. 365 D: 1,201 lbs



Genomic  
Enhanced  
EPDs

BW  
1.4

WW  
+48

YW  
+94

Milk  
+17

MARB  
+0.09

REA  
+0.37

Fat  
+0.026

PERF	AOD	BW	205D	365D	Value Index	\$W	\$F	\$G	\$B
	ET	ET	610	1124		35.19	55.65	12.81	69.22

TWIN VALLEY PRECISION E161 AMF CAF NHC  
Sire: **BR MIDLAND 1178822 AMF NHF CAF**  
BR ROYAL LASS 7036-19

G A R PRECISION 1680 NHC AMC  
W C C BLACKCAP C9  
S A F NEUTRON AMF NHF CAF  
SAF ROYAL LASS 7036

TC FREEDOM 104 CAF AMF NHF  
Dam: **PF 104 RUGH 3131 1404756**  
EXAR RUTH 1233

CONNELLY FOREFRONT AMF NHF CAF  
T C RUBY 9095 CAF  
BON VIEW NEW DESIGN 1407 AMF NHF CAF  
SHADY BROOK RUTH 284G



Midland 753 is sired by BR Midland, the \$202,000 bull out of the Midland Bull Test who is now owned by Whitestone Krebs and Express Ranches. He is a proven calving ease sire with good carcass numbers and has 6,671 daughters on the registry. He has sired numerous champions throughout North America. The mother of Midland 753 was a donor at Pollard Farms and is sired by the ever popular TC Freedom 104 out of a 1407 daughter bred

at Express. Note the 248G cow is by a son of 6807 from the great Sitz Everelda Entense 1137. Angus breeding at its best.

Midland has been Zoetis 50 K tested and carries a top 1% rating for Residual Feed Intake which is a measure of feed intake to pound gained. We are not aware of any bull that is ranked this high. Midland sired our high-selling black bull in Sale XVII 2013 to Rod Nelson Farms.

## BAGGING IN MOTION

"For all your silaging needs."

**Darren Unger**  
Phone: 403/345-2333  
Coaldale, Alberta

SEEDING • SWATHING • CHOPPING • TRUCKING • BAGGING



**Benchmark Midland 81'12**  
Lot 21, Sale XVII, sold to Rod Nelson Farms.

# Bulls Sired by Benchmark Midland 753

LOT **1**

## Benchmark Midland 2'14

Male BFL 2B February 12 2014 1821249



CARCASS EPDs	ACTUAL
MARB +.23	% IMF 3.61
REA +0.29	REA 1.09
Fat +0.007	Rib Fat 0.18
	LMY 63.3

BR MIDLAND DMF AMF CAF NHF DDF  
Sire: **BENCHMARK MIDLAND 753 DDF (1417210)**  
PF 104 RUTH 3131

TWIN VALLEY PRECISION E161 AMF CAF NHC DDF  
BR ROYAL LASS 7036-19  
TC FREEDOM 104 AMF CAF NHF DDF  
EXAR RUTH 1233

TC FREEDOM 104 AMF CAF NHF DDF  
Dam: **BENCHMARK FOREVER LADY 038 (1600258)**  
DAVIS FOREVER LADY 7653

CONNELLY FOREFRONT AMF CAF NHF DDF  
T C RUBY 9095 CAF  
G A R PRECISION 1680 AMC NHC  
S V F Forever Lady 1121

Note the ever popular TC Freedom 104 sired dam who is out of a donor cow that we owned with Pollard Farms in Oklahoma.

PERF	AOD	BW	205D	365D	2015 EPDs	BW	WW	YW	MILK
	4	83	649	1040		+1.5	+44	+85	+19

LOT **2**

## Benchmark Midland 7'14

Male BFL 7B February 18 2014 1779763



CARCASS EPDs	ACTUAL
MARB -.05	% IMF 2.56
REA +0.17	REA 1.00
Fat +0.019	Rib Fat 0.17
	LMY 63.4

BR MIDLAND DMF AMF CAF NHF DDF  
Sire: **BENCHMARK MIDLAND 753 DDF (1417210)**  
PF 104 RUTH 3131

TWIN VALLEY PRECISION E161 AMF CAF NHC DDF  
BR ROYAL LASS 7036-19  
TC FREEDOM 104 AMF CAF NHF DDF  
EXAR RUTH 1233

BEN'S BIG BOY 3'73  
Dam: **KENALTA PRIDE 29'03 (1192372)**  
KENALTA PRIDE 30'01

SOUTHOLM BIG BEN  
ERICA OF EAST CHAMPION 16C  
REICH COBRA 39J  
KENALTA PRIDE 24'99

Maternal brothers at Peter Heins & Sons, Black Acre Farms, Deer Creek Livestock and a full brother at Delbert Snortlands.

PERF	AOD	BW	205D	365D	2015 EPDs	BW	WW	YW	MILK
	11	87	657	1152		+2.1	40	72	16

LOT **3**

## Benchmark Midland 11'14

Male BFL 11B February 22 2014 1779766



CARCASS EPDs	ACTUAL
MARB +0.22	% IMF 3.91
REA +0.40	REA 1.03
Fat +0.029	Rib Fat 0.33
	LMY 60.5

BR MIDLAND DMF AMF CAF NHF DDF  
Sire: **BENCHMARK MIDLAND 753 DDF (1417210)**  
PF 104 RUTH 3131

TWIN VALLEY PRECISION E161 AMF CAF NHC DDF  
BR ROYAL LASS 7036-19  
TC FREEDOM 104 AMF CAF NHF DDF  
EXAR RUTH 1233

G A R US PREMIUM BEEF AMF CAF NHF DDF  
Dam: **BENCHMARK LUCY 769 (1417249)**  
ROYAL LUCY DRCC 3014N

G A R PRECISION 1680 AMC NHC  
G A R EXT 2928 AMF NHF  
ALBERDA TRAVELER 416 AMF CAF NHF DDF  
THOMAS LUCY 0775

A full brother serves for Joseph Kaupp.

PERF	AOD	BW	205D	365D	2015 EPDs	BW	WW	YW	MILK
	7	96	752	1253		+2.4	51	91	19

LOT **4**

## Benchmark Midland 38'14

Male LAA 38B March 02 2014 1779920



CARCASS EPDs	ACTUAL
MARB +.30	% IMF 4.10
REA +0.52	REA 1.07
Fat +0.047	Rib Fat 0.36
	LMY 60.2

BR MIDLAND DMF AMF CAF NHF DDF  
Sire: **BENCHMARK MIDLAND 753 DDF (1417210)**  
PF 104 RUTH 3131

TWIN VALLEY PRECISION E161 AMF CAF NHC DDF  
BR ROYAL LASS 7036-19  
TC FREEDOM 104 AMF CAF NHF DDF  
EXAR RUTH 1233

ALC BIG EYE D09N AMF CAF NHF DDF  
Dam: **BENCHMARK BLACKBIRD 028 (1565615)**  
BENCHMARK BLACKBIRD 6196

C A FUTURE DIRECTION 5321 AMF CAF NHC DDF  
ALC HAZEL L12L AMF CAF  
BASIN PRIME CUT 080M  
THOMAS BLACKBIRD 9537

Blackbird 028 has a daughter in the herd and a son at the very astute cattleman Richard Hiebert. She is one of our best. Bred to be that way.

PERF	AOD	BW	205D	365D	2015 EPDs	BW	WW	YW	MILK
	4	86	730	1311		+0.1	51	93	25

# Bulls Sired by Benchmark Midland 753

LOT **5**

## Benchmark Midland 41'14

Male BFL 41A March 03 2014 1779786



CARCASS EPDs	ACTUAL
MARB +0.32	% IMF 3.70
REA +0.28	REA 1.11
Fat +0.021	Rib Fat 0.32
	LMY 61.0

BR MIDLAND DMF AMF CAF NHF DDF  
Sire: **BENCHMARK MIDLAND 753 DDF (1417210)**  
PF 104 RUTH 3131

TWIN VALLEY PRECISION E161 AMF CAF NHC DDF  
BR ROYAL LASS 7036-19  
TC FREEDOM 104 AMF CAF NHF DDF  
EXAR RUTH 1233

LCC FEW DOLLARS MORE H013N AMF NHC  
Dam: **BENCHMARK LASSIE 926 NHF (1499306)**  
BENCHMARK LASSIE 35

C A FUTURE DIRECTION 5321 AMC CAF NHC DDF  
LCC LAKINA K3218  
J R JUICE 2005 CAFF  
BENCHMARK LASSIE 126

Lassie 926 is designated as an Elite Dam by the Canadian Angus Association with four calves having a weaning index of 112. She has a son at Flying T Land and Livestock and a full sister to 41B in the herd.

PERF	AOD	BW	205D	365D	2015 EPDs	BW	WW	YW	MILK
	5	98	770	1219		+2.2	49	91	24

LOT **6**

## Benchmark Midland 43'14

Male LAA 43B March 03 2014 1779922



CARCASS EPDs	ACTUAL
MARB +.13	% IMF 4.86
REA +0.34	REA 1.14
Fat +0.022	Rib Fat 0.30
	LMY 61.2

BR MIDLAND DMF AMF CAF NHF DDF  
Sire: **BENCHMARK MIDLAND 753 DDF (1417210)**  
PF 104 RUTH 3131

TWIN VALLEY PRECISION E161 AMF CAF NHC DDF  
BR ROYAL LASS 7036-19  
TC FREEDOM 104 AMF CAF NHF DDF  
EXAR RUTH 1233

PF E161 PRECISION 2188  
Dam: **BENCHMARK PRIDE 5136 NHF (1254262)**  
BENCHMARK PRIDE 158

TWIN VALLEY PRECISION E161 AMF CAF NHC DDF  
SPRING COVE ALICE 446  
EBON HILL MAGIC MAN 41'97  
BENCHMARK PRIDE 3'97

The dam of Lot 6 has a son at Ryan Chipman's and a daughter in the herd.

PERF	AOD	BW	205D	365D	2015 EPDs	BW	WW	YW	MILK
	9	89	687	1154		+2.0	46	85	20

LOT **7**

## Benchmark Midland 61'14

Male BFL 61B March 08 2014 1779795



BR MIDLAND DMF AMF CAF NHF DDF  
Sire: **BENCHMARK MIDLAND 753 DDF (1417210)**  
PF 104 RUTH 3131

TWIN VALLEY PRECISION E161 AMF CAF NHC DDF  
BR ROYAL LASS 7036-19  
TC FREEDOM 104 AMF CAF NHF DDF  
EXAR RUTH 1233

STANDARD HILL PAYOFF 20P AMF NHF  
Dam: **BENCHMARK ANNIE K 740 (1370543)**  
BENCHMARK ANNIE K 5123

C A FUTURE DIRECTION 5321 AMC CAF NHC DDF  
STANDARD HILL QUEEN MOTHER 13M  
BENCHMARK AMBUSH 363  
BENCHMARK ANNIE K 3160

PERF	AOD	BW	205D	365D	2015 EPDs	BW	WW	YW	MILK
	8	97	802	1308		+3.3	52	87	25

CARCASS EPDs	ACTUAL
MARB +.21	% IMF 4.54
REA +0.47	REA 1.10
Fat +0.010	Rib Fat 0.29
	LMY 62.3

Lot 7 is from a Payoff daughter who is designated Elite by Canadian Angus Association with six calves at an average ratio of 111. Annie K 740 has sons at Steve Oczkowski's and a son at Kinsella Research Ranch. Note the 205D weight on this guy and just on mom's milk and Milk River Ridge grass.

*Sale Sponsor*



## Taber Animal Clinic

Nick VanGeest, D.V.M.


6212 - 54th Ave., Taber, AB T1G 1X3

Phone: 403/223-2474  
Fax: 403/223-0046  
Cell: 403/330-6442  
Res: 403/223-1298

**Lynn Pearson**  
Senior Wealth Advisor  
Tel: 403/317-4836

**Karen Ohno CFP, CIM, FCSI**  
Wealth Advisor  
Tel: 403/317-7041

319 - 4th Street South  
Lethbridge, AB T1J 1Z9  
Tel: 403/317-4571  
Fax: 403/317-7048  
Toll Free: 1-888-797-0778



ScotiaMcLeod is a division of Scotia Capital Inc., a member of the Scotiabank Group.



# Bulls Sired by Benchmark Midland 753

LOT  
**8**

## Benchmark Midland 81'14

Male BFL 81B March 10 2014 1779803



BR MIDLAND DMF AMF CAF NHF DDF  
Sire: **BENCHMARK MIDLAND 753 DDF (1417210)**  
PF 104 RUTH 3131

GARDENS PRIME STAR 1029 AMF  
Dam: **BENCHMARK TIBBIE D 9261 (1535990)**  
BENCHMARK TIBBIE D 4212

TWIN VALLEY PRECISION E161 AMF CAF NHC DDF  
BR ROYAL LASS 7036-19  
TC FREEDOM 104 AMF CAF NHF DDF  
EXAR RUTH 1233

GARDENS PRIME STAR AMF CAF NHF DDF  
GREEN GARDEN BLKBD D17 S1  
S A NEUTRON 377 AMF CAF NHF DDF  
TIBBIE D OF ALCAN 145

CARCASS EPDs	ACTUAL
MARB +0.34	% IMF 4.54
REA +0.39	REA 1.15
Fat +.035	Rib Fat 0.22
	LMY 62.7

PERF	AOD	BW	205D	365D	2015 EPDs	BW	WW	YW	MILK
	5	74	622	1125		-0.1	44	84	19

Heifer bull in Lot 8. A full sister calves this spring at Benchmark.

LOT  
**9**

## Benchmark Midland 97'14

Male BFL 97B March 15 2014 1779812



BR MIDLAND DMF AMF CAF NHF DDF  
Sire: **BENCHMARK MIDLAND 753 DDF (1417210)**  
PF 104 RUTH 3131

G A R PREDESTINED AMF CAF NHF DDC  
Dam: **BENCHMARK LUCY 66 (1345904)**  
ROYAL LUCY DRCC 2128M

TWIN VALLEY PRECISION E161 AMF CAF NHC DDF  
BR ROYAL LASS 7036-19  
TC FREEDOM 104 AMF CAF NHF DDF  
EXAR RUTH 1233

B/R NEW DESIGN 036 AMF CAF NHF DDC  
G A R EXT 4206  
B C C BUSHWACKER 41-93 AMF CAF NHF DDFC  
THOMAS LUCY 3109

CARCASS EPDs	ACTUAL
MARB +0.46	% IMF 5.36
REA +0.36	REA 1.14
Fat +.018	Rib Fat 0.24
	LMY 61.9

PERF	AOD	BW	205D	365D	2015 EPDs	BW	WW	YW	MILK
	8	83	616	1099		+1.4	42	79	21

The dam by Predestined has a son at Del Giles, and a son at Blaine Walburgers that we used at Benchmark as well. Lucy 66 is an Elite with 5 calves at 107.

LOT  
**10**

## Benchmark Midland 99'14

Male POKE 99B March 16 2014 1779870



BR MIDLAND DMF AMF CAF NHF DDF  
Sire: **BENCHMARK MIDLAND 753 DDF (1417210)**  
PF 104 RUTH 3131

ALC BIG EYE D09N AMF CAF NHF DDF  
Dam: **BENCHMARK BLACK LASS 745 (1371349)**  
BALE MISS 727 120L

TWIN VALLEY PRECISION E161 AMF CAF NHC DDF  
BR ROYAL LASS 7036-19  
TC FREEDOM 104 AMF CAF NHF DDF  
EXAR RUTH 1233

C A FUTURE DIRECTION 5321 AMC CAF NHC DDF  
ALC HAZEL L12L AMF CAF  
G D A R EXECUTIVE 727 AMF NHF  
CO BOSS PRIDE 45Z

CARCASS EPDs	ACTUAL
MARB +0.19	% IMF 3.67
REA +0.55	REA 1.13
Fat +0.024	Rib Fat 0.39
	LMY 59.1

PERF	AOD	BW	205D	365D	2015 EPDs	BW	WW	YW	MILK
	7	89	696	1231		+1.9	48	89	22

From an Elite Dam with 4 calves with 106 ratio. She has sons at Ryan Chipman's and East Raymond and a full brother to Lot 10 at Baynton Ranch.

# Bulls Sired by Benchmark Midland 753

LOT  
**11**

## Benchmark Midland 101'14

Male BFL 101B March 16 2014 1779813



BR MIDLAND DMF AMF CAF NHF DDF  
Sire: **BENCHMARK MIDLAND 753 DDF (1417210)**  
PF 104 RUTH 3131

STANDARD HILL PAYOFF 20P AMF NHF  
Dam: **BENCHMARK RITA 073 (1565900)**  
BENCHMARK RITA 82

TWIN VALLEY PRECISION E161 AMF CAF NHC DDF  
BR ROYAL LASS 7036-19  
TC FREEDOM 104 AMF CAF NHF DDF  
EXAR RUTH 1233

C A FUTURE DIRECTION 5321 AMC CAF NHC DDF  
STANDARD HILL QUEEN MOTHER 13M  
S A V BANDOLIER 1916 AMF  
BIG COUNTRY RITA 4P AMF NHF

CARCASS EPDs	ACTUAL
MARB +0.19	% IMF 4.02
REA +0.45	REA 1.07
Fat +0.023	Rib Fat 0.33
	LMY 60.3

PERF	AOD	BW	205D	365D	2015 EPDs	BW	WW	YW	MILK
	4	101	706	1276		+4.0	44	80	25

A maternal sister to Lot 11 is in the herd with a son selling as Lot 30 with a 205D weight of 810 lbs.

LOT  
**12**

## Benchmark Midland 102'14

Male BFL 102B March 16 2014 1779815



BR MIDLAND DMF AMF CAF NHF DDF  
Sire: **BENCHMARK MIDLAND 753 DDF (1417210)**  
PF 104 RUTH 3131

ALC BIG EYE D09N AMF CAF NHF DDF  
Dam: **BENCHMARK ERELITE 042 (1565890)**  
BENCHMARK ERELITE 6225

TWIN VALLEY PRECISION E161 AMF CAF NHC DDF  
BR ROYAL LASS 7036-19  
TC FREEDOM 104 AMF CAF NHF DDF  
EXAR RUTH 1233

C A FUTURE DIRECTION 5321 AMC CAF NHC DDF  
ALC HAZEL L12L AMF CAF  
STEVENS ON AMBUSH 9731  
BENCHMARK ERELITE 877

CARCASS EPDs	ACTUAL
MARB +0.28	% IMF 4.99
REA +0.55	REA 1.04
Fat +0.019	Rib Fat 0.38
	LMY 58.8

PERF	AOD	BW	205D	365D	2014 EPDs	BW	WW	YW	MILK
	4	98	789	1273		+3.3	54	90	22

These Big Eye daughters get the job done. Erelite 042 has a Daybreak daughter in the herd and a son at our neighbour's, Keith Heppler.

LOT  
**13**

## Benchmark Midland 103'14

Male BFL 103B March 16 2014 1779815



BR MIDLAND DMF AMF CAF NHF DDF  
Sire: **BENCHMARK MIDLAND 753 DDF (1417210)**  
PF 104 RUTH 3131

B/R NEW DESIGN 036 AMF CAF NHF DDC  
Dam: **BENCHMARK PRIME BEAUTY 047 (1586162)**  
ISLA BANK PRIME BEAUTY 48A

TWIN VALLEY PRECISION E161 AMF CAF NHC DDF  
BR ROYAL LASS 7036-19  
TC FREEDOM 104 AMF CAF NHF DDF  
EXAR RUTH 1233

V D A R NEW TREND 315 AMF CAF NHF DDF  
B/R BLACKCAP EMPRESS 76  
RITO 2100 G D A R  
ABERLYNN PRIME BEAUTY 9'84

CARCASS EPDs	ACTUAL
MARB +0.24	% IMF 5.19
REA +0.19	REA 1.04
Fat +0.008	Rib Fat 0.30
	LMY 60.6

PERF	AOD	BW	205D	365D	2015 EPDs	BW	WW	YW	MILK
	4	99	732	1244		+3.3	46	79	17

A Daybreak son of Beauty 047 serves at Taylor's. Note 48A on the bottom side, the dam of Beauty 7E, the backbone of the Ebon Hill program.



# Bulls Sired by Benchmark Midland 753

LOT  
**14**

## Benchmark Midland 109'14

Male BFL 109B March 18 2014 1779820



BR MIDLAND DMF AMF CAF NHF DDF  
Sire: **BENCHMARK MIDLAND 753 DDF (1417210)**  
PF 104 RUTH 3131

STANDARD HILL PAYOFF 20P AMF NHF  
Dam: **BENCHMARK ERICA EVA 9147 (1499359)**  
RIR ERICA EVA 8M

TWIN VALLEY PRECISION E161 AMF CAF NHC DDF  
BR ROYAL LASS 7036-19  
TC FREEDOM 104 AMF CAF NHF DDF  
EXAR RUTH 1233

C A FUTURE DIRECTION 5321 AMC CAF NHC DDF  
STANDARD HILL QUEEN MOTHER 13M  
S A F 598 BANDO 5175 AMF CAC DDF  
RAFTER IR ERICA EVA 31E

CARCASS EPDs	ACTUAL
MARB +0.27	% IMF 5.42
REA +0.40	REA 1.27
Fat +0.019	Rib Fat 0.32
	LMY 61.0

PERF	AOD	BW	205D	365D	2015 EPDs	BW	WW	YW	MILK
	5	83	676	1108		+1.2	42	78	22

Full brother to Lot 14, works at Deer Creek.

LOT  
**15**

## Benchmark Midland 138'14

Male LAA 138B March 29 2014 1779932



BR MIDLAND DMF AMF CAF NHF DDF  
Sire: **BENCHMARK MIDLAND 753 DDF (1417210)**  
PF 104 RUTH 3131

G A R EFFICIENCY 7295 AMF CAF NHF DDF  
Dam: **BENCHMARK LAVENDER LADY 959 (1499454)**  
BENCHMARK LAVENDER LADY 6176


TWIN VALLEY PRECISION E161 AMF CAF NHC DDF  
BR ROYAL LASS 7036-19  
TC FREEDOM 104 AMF CAF NHF DDF  
EXAR RUTH 1233

S S OBJECTIVE T510 OT26 DMF AMF CAF NHF DDF  
G A R ENHAVER G113 NHF  
PF E161 PRECISION 2188  
LAVENDER LADY ALCAN 206

CARCASS EPDs	ACTUAL
MARB +0.18	% IMF 4.03
REA +0.31	REA 1.21
Fat +0.009	Rib Fat 0.35
	LMY 60.4

PERF	AOD	BW	205D	365D	2015 EPDs	BW	WW	YW	MILK
	5	95	693	1217		+2.5	47	87	18

Dam is Elite, with two daughters in the herd and a son at Blaine Walburgers.



**GATEWAY LIVESTOCK GROUP OF COMPANIES**  
MARKETING - EXCHANGE - CARRIERS

**Buying and Selling Angus Influenced Cattle**

Give us a Call Today

FF: 403-223-8872 FAX: 403-223-8272 5604 64TH STREET - TABER, ALBERTA  
WWW.GATEWAYLIVESTOCK.COM

**The world is your (prairie) oyster.**

We support Alberta's ranching community—and continue to raise our understanding of life on the land for over 70 years. Find out how we can help your ranch thrive and grow. Stop by one of our branches or agencies—we're in 242 Alberta communities. [atb.com](http://atb.com)

**ATB Agriculture™**

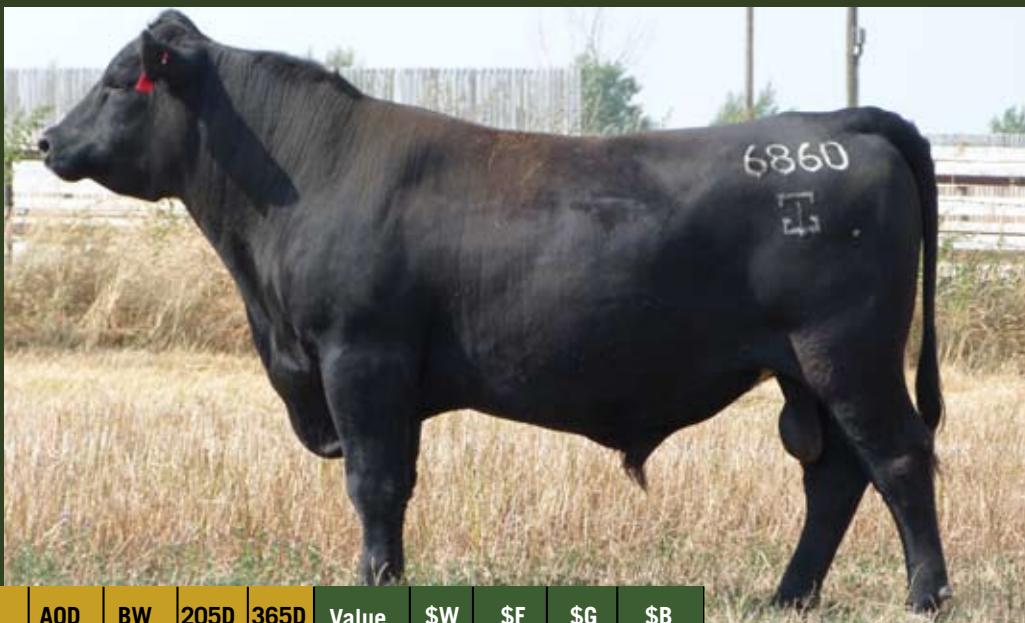
CASH FLOW | FINANCING | CLOSE TO HOME | AG KNOW HOW

# Reference Sire

## G A R Daybreak 6860

15 Sons Sell

Avg. BW: 79 lbs. Avg. 205 D: 720 lbs. Avg. 365 D: 1,254 lbs



### Genomic Enhanced EPDs

BW  
-1.1

WW  
+62

YW  
+111

Milk  
+26

MARB  
+1.00

REA  
+0.75

Fat  
-0.018

PERF	AOD	BW	205D	365D	Value Index	\$W	\$F	\$G	\$B
	ET	84	615	1277		54.46	58.51	50.30	117.29

Owned with Gardiner Angus Ranch

Sire: **BOYD NEW DAY 8005 994200 AMF NHF CAF DDF**  
**MCC DAYBREAK 1356843 AMF NHF CAF DDF**  
**MCC MISS FOCUS CHIEF 519 US12492816**

**A A R NEW TREND US9958634**  
**S V F FOREVER LADY 57D US12133159**  
**S A F FOCUS OF E R 940839**  
**M C C MISS CHIEF 519 US12492815**

Dam: **S S OBJECTIVE T510 OT26 AMF NHF CAF DDF DMF**  
**G A R OBJECTIVE 277L US16079546 AMF**  
**G A R RETAIL PRODUCT 2195 NHF**

**S S TRAVELER 6807 T510 AMF NHF CAF DDF DMF**  
**S S MISS RITA R011 7R8 AMF NHF**  
**GAR RETAIL PRODUCT AMF NHF CAF DDF**  
**G A R 1407 New Design 1223**

6860 WAS OUR PICK OF THE 61 DAYBREAK SONS at the 2012 Spring Gardiner Sale, where they sold 1,337 head of purebred Angus cattle in about five hours and gathered in just short of \$5.25 million. My notes on the bull that day read as follows, "Beautiful Angus head, quiet, long, deep, beautiful front end, good big foot, moves out nice on great feet and legs". His mother, an Objective daughter, was a Gardiner donor and had 21 calves averaging 70 lbs. at birth with 19 of them rationing 109 for % IMF and 102 for REA.

Study the genetics here, MCC Daybreak, Objective, Retail Product and then on the bottom side you have 1407, 1680, EXT, Traveler 23-4 and Scotch Cap, the backbone of Angus carcass genetics. Then study the enhanced EPDS and note that Daybreak 6860 ranks in the top 1% for BW, Calving Ease, Maternal Calving Ease, REA and Marbling, in the top 2% for REA, YW, top 3% for WW and top 8% for Milk. Wow! Better check out the Daybreak sons selling in this offering. They were a real hit in our December sale.



### COMMITTED TO QUALITY.

**COMM-FLEX**

LOCATIONS IN:

Lubbock, AB  
Zimbabwe  
Manitoba  
British Columbia

403.634.1615  
www.commflexsupply.com

OUR QUALITY PRODUCTS

WALL NET WRAP

HAY PRESERVATIVES

Slow-Guard

TWINE

SILAGE COVERS

BOOK NOW TO SAVE ON YOUR BOTTOM LINE

# Bulls Sired by G A R Daybreak 6860

LOT  
**16**

## Benchmark Daybreak 10'14

Male POKE 10B February 22 2014 1782663



MCC DAYBREAK AMF CAF NHF DDF  
Sire: **G A R DAYBREAK 6860 DDC (1693219)**  
G A R OBJECTIVE 277L AMF DDC

BENCHMARK MIDLAND 753 DDF  
Dam: **BENCHMARK BLACK LASS 109'12 (1671924)**  
BENCHMARK BLACK LASS 9141

BOYD NEW DAY 8005 AMF CAF NHF DDF  
MCC MISS FOCUS 134 AMF NHF  
S S OBJECTIVE T510 OT26 DMF AMF CAF NHF DDF  
G A R RETAIL PRODUCT 2195 NHF DDC

BR MIDLAND DMF AMF CAF NHF DDF  
PF 104 RUTH 3131  
GARDENS PRIME STAR 1029 AMF  
BENCHMARK BLACK LASS 745

CARCASS EPDs	ACTUAL
MARB +0.65	% IMF 4.79
REA +0.55	REA 0.91
Fat -0.002	Rib Fat 0.24
	LMY 60.8

PERF	AOD	BW	205D	365D	2015 EPDs	BW	WW	YW	MILK
	2	77	676	1228		+0.2	54	101	23

A heifer bull from a great Midland 753 two year old. Note that Black Lass 745 is Elite and dam of Lot 10.

LOT  
**17**

## Benchmark Daybreak 19'14

Male BFL 19B February 24 2014 1782664



MCC DAYBREAK AMF CAF NHF DDF  
Sire: **G A R DAYBREAK 6860 DDC (1693219)**  
G A R OBJECTIVE 277L AMF DDC

ROYAL PREDESTINED DRCC 8020U AMF NHF  
Dam: **BENCHMARK MAIDEN 239'11 (1649563)**  
BENCHMARK MAIDEN 33

BOYD NEW DAY 8005 AMF CAF NHF DDF  
MCC MISS FOCUS 134 AMF NHF  
S S OBJECTIVE T510 OT26 DMF AMF CAF NHF DDF  
G A R RETAIL PRODUCT 2195 NHF DDC

G A R PREDESTINED AMF CAF NHF DDC  
THOMAS LUCY 0775  
B/R NEW DESIGN 036 AMF CAF NHF DDC  
MAIDEN OF ALCAN 161

CARCASS EPDs	ACTUAL
MARB +0.78	% IMF 4.27
REA +0.63	REA 0.90
Fat -0.011	Rib Fat 0.31
	LMY 59.6

PERF	AOD	BW	205D	365D	2015 EPDs	BW	WW	YW	MILK
	2	84	737	1324		+1.6	55	96	25

The dam is by Casey, the largest REA bull ever measured at Dunford Royal. Lot 17 ranks in the top 5% for REA and Marbling.

LOT  
**18**

## Benchmark Daybreak 27'14

Male BFL 27B February 26 2014 1779775



MCC DAYBREAK AMF CAF NHF DDF  
Sire: **G A R DAYBREAK 6860 DDC (1693219)**  
G A R OBJECTIVE 277L AMF DDC

ROYAL PREDESTINED DRCC 8020U AMF NHF  
Dam: **BENCHMARK LUCY 231'11 (1649554)**  
ROYAL LUCY DRCC 5059R

BOYD NEW DAY 8005 AMF CAF NHF DDF  
MCC MISS FOCUS 134 AMF NHF  
S S OBJECTIVE T510 OT26 DMF AMF CAF NHF DDF  
G A R RETAIL PRODUCT 2195 NHF DDC

G A R PREDESTINED AMF CAF NHF DDC  
THOMAS LUCY 0775  
ALBERDA TRAVELER 416 AMF CAF NHF DDF  
THOMAS LUCY 9056

CARCASS EPDs	ACTUAL
MARB +0.81	% IMF 4.82
REA +0.65	REA 0.96
Fat +0.001	Rib Fat 0.31
	LMY 59.9

PERF	AOD	BW	205D	365D	2015 EPDs	BW	WW	YW	MILK
	2	97	743	1284		+3.4	54	95	26

Three-quarter brother to Lot 17 that traces to one of the thickest cows on the place in 5059R. This guy ranks in the top 4% for REA and Marbling and the top 15% for WW and YW.



# Bulls Sired by G A R Daybreak 6860

LOT  
**19**

## Benchmark Daybreak 46'14

Male BFL 46B March 5 2014 1779789



MCC DAYBREAK AMF CAF NHF DDF  
Sire: **G A R DAYBREAK 6860 DDC (1693219)**  
G A R OBJECTIVE 277L AMF DDC

TC ABERDEEN 759 AMF CAF NHF DDF  
Dam: **BENCHMARK QUEEN 221'11 (1654393)**  
G A R T510 TRAVELER 264 AMF

BOYD NEW DAY 8005 AMF CAF NHF DDF  
MCC MISS FOCUS 134 AMF NHF  
S S OBJECTIVE T510 OT26 DMF AMF CAF NHF DDF  
G A R RETAIL PRODUCT 2195 NHF DDC

C R A BEXTOR 872 5205 608 AMF CAF NHF DDFTHOM  
TC BLACKBIRD 4034 CAF  
S S TRAVELER 6807 T510 DMF AMF CAF NHF DDF  
G A R EXPECTATION 1151

CARCASS EPDs	ACTUAL
MARB +0.73	% IMF 4.35
REA +0.75	REA 1.01
Fat -.004	Rib Fat 0.28
	LMY 61.1

A heifer bull ranking in the top 1% for Calving Ease and Maternal Calving Ease, in the top 2% for BW and REA, top 6% for Marbling, top 7% for YW and top 10% for WW. The dam is a full sister to our 188Z herd sire with 14 calves on the ground, with the bull calves at 82 lbs. and the heifer calves at 78 lbs. at birth.

PERF	AOD	BW	205D	365D	2015 EPDs	BW	WW	YW	MILK
	2	74	728	1320		-0.8	56	102	26

LOT  
**20**

## Benchmark Daybreak 51'14

Male BFL 51B March 6 2014 1779790



MCC DAYBREAK AMF CAF NHF DDF  
Sire: **G A R DAYBREAK 6860 DDC (1693219)**  
G A R OBJECTIVE 277L AMF DDC

G A R EFFICIENCY 7295 AMF CAF NHF DDF  
Dam: **BENCHMARK BELLE 122'12 (1672088)**  
GAR 1407 NEW DESIGN N85

BOYD NEW DAY 8005 AMF CAF NHF DDF  
MCC MISS FOCUS 134 AMF NHF  
S S OBJECTIVE T510 OT26 DMF AMF CAF NHF DDF  
G A R RETAIL PRODUCT 2195 NHF DDC

S S OBJECTIVE T510 OT26 DMF AMF CAF NHF DDF  
G A R ENHAVER G113 NHF  
BON VIEW NEW DESIGN 1407 AMF CAF NHF DDC  
G A R PRECISION 1831

CARCASS EPDs	ACTUAL
MARB +0.82	% IMF 6.82
REA +0.56	REA 1.21
Fat -.022	Rib Fat 0.24
	LMY 62.6

A sure-fire heifer bull ranking in the top 10% or better for BW, REA, Marbling, Fat, Calving Ease and Maternal Calving Ease.

PERF	AOD	BW	205D	365D	2015 EPDs	BW	WW	YW	MILK
	2	58	632	1155		-3.9	51	91	21

### D & S INSURANCE SERVICES

DONNA MILLHAEM

304 - 2 STREET, P.O. BOX 357, WARNER, AB. T0K 2L0  
Telephone: (403) 642-2032 Fax: (403) 642-2112  
E-MAIL: [millhaem@shockware.com](mailto:millhaem@shockware.com)  
Toll Free in Alberta:  
1-888-488-0188

FOR ALL YOUR INSURANCE NEEDS

FARM HOME AUTO TRAVEL



**BUILT RIGHT. RIGHT HERE**

**Lethbridge, AB (403)380-7831**

# Bulls Sired by G A R Daybreak 6860

LOT  
**21**

## Benchmark Daybreak 52'14

Male BFL 52B March 6 2014 1779791



MCC DAYBREAK AMF CAF NHF DDF  
Sire: **G A R DAYBREAK 6860 DDC (1693219)**  
G A R OBJECTIVE 277L AMF DDC

G A R NEW DESIGN 5050 AMF CAF NHF DDC  
Dam: **BENCHMARK LUCY 9'12 (1672012)**  
BENCHMARK LUCY 0131

BOYD NEW DAY 8005 AMF CAF NHF DDF  
MCC MISS FOCUS 134 AMF NHF  
S S OBJECTIVE T510 OT26 DMF AMF CAF NHF DDF  
G A R RETAIL PRODUCT 2195 NHF DDC

B/R NEW DESIGN 036 AMF CAF NHF DDC  
G A R PRECISION 706 AMF NHC  
G A R EFFICIENCY 7295 AMF CAF NHF DDF  
BENCHMARK LUCY 769

CARCASS EPDs	ACTUAL
MARB +0.89	% IMF 4.93
REA +0.73	REA 0.95
Fat -.018	Rib Fat 0.22
	LMY 61.6

Here is a bull that ranks in the top 5% or better for WW, YW, Milk, REA, Marbling and Fat. Buy them for what they will do for you.

PERF	AOD	BW	205D	365D	2015 EPDs	BW	WW	YW	MILK
	2	88	772	1224		+1.8	61	106	28

LOT  
**22**

## Benchmark Daybreak 66'14

Male BFL 66B March 9 2014 1779796



MCC DAYBREAK AMF CAF NHF DDF  
Sire: **G A R DAYBREAK 6860 DDC (1693219)**  
G A R OBJECTIVE 277L AMF DDC

TC ABERDEEN 759 AMF CAF NHF DDF  
Dam: **BENCHMARK QUEEN 222'11 (1654392)**  
G A R T510 TRAVELER 264 AMF

BOYD NEW DAY 8005 AMF CAF NHF DDF  
MCC MISS FOCUS 134 AMF NHF  
S S OBJECTIVE T510 OT26 DMF AMF CAF NHF DDF  
G A R RETAIL PRODUCT 2195 NHF DDC

C R A BEXTOR 872 5205 608 AMF CAF NHF DDFTHOM  
TC BLACKBIRD 4034 CAF  
S S TRAVELER 6807 T510 DMF AMF CAF NHF DDF  
G A R EXPECTATION 1151

CARCASS EPDs	ACTUAL
MARB +0.73	% IMF 5.37
REA +0.75	REA 1.15
Fat -.004	Rib Fat 0.25
	LMY 62.2

Full brother to Lot 19, 66'14 ranks in the top 1% for BW, Calving Ease and Maternal Calving Ease and in the top 10% or better for YW, REA and Marbling.

PERF	AOD	BW	205D	365D	2015 EPDs	BW	WW	YW	MILK
	2	65	705	1205		-2.2	55	100	26

**the co-operators**  
A Better Place For You™  
MERRIMAN INSURANCE SERVICES LTD.  
Brent Merriman - Agent

502 5 Ave. S  
Lethbridge, AB T1J 0T8  
Ph (403) 382-2820  
Fax (403) 382-2823  
Email [brent\\_merriman@cooperators.ca](mailto:brent_merriman@cooperators.ca)

**DINE-IN, PICK UP & DELIVERY**  
The Finest Pizza, Pasta & Salads  
in Lethbridge for over 40 Years.

**2013 Lethbridge BEST OF THE BEST**

Monday to Thursday  
11:00 AM to 12:00 AM

Friday to Saturday  
11:00 AM to 1:00 AM

Sunday & Holidays  
4:00 PM to 11:00 PM

**403-327-1952**  
[www.top-pizza.com](http://www.top-pizza.com)

**1101 - 4th Ave. South.**

# Bulls Sired by G A R Daybreak 6860

LOT **23**

## Benchmark Daybreak 78'14

Male BFL 78B March 10 2014 1779806



MCC DAYBREAK AMF CAF NHF DDF  
Sire: **G A R DAYBREAK 6860 DDC (1693219)**  
G A R OBJECTIVE 277L AMF DDC

S A V BISMARCK 5682 AMF CAF NHF DDF  
Dam: **BENCHMARK ESTER 23'12 (1670098)**  
THOMAS ESTER 0190

BOYD NEW DAY 8005 AMF CAF NHF DDF  
MCC MISS FOCUS 134 AMF NHF  
S S OBJECTIVE T510 OT26 DMF AMF CAF NHF DDF  
G A R RETAIL PRODUCT 2195 NHF DDC

G A R GRID MAKER AMF CAF NHF DDF  
S A V ABIGALE 0451  
PARAMONT AMBUSH 2172 AMF CAF NHF DDF  
THOMAS ESTER 8380

CARCASS EPDs	ACTUAL
MARB +0.69	% IMF 4.11
REA +0.63	REA 1.08
Fat -.011	Rib Fat 0.30
	LMY 61.1

The two year old dam is a result of our embryo program. Lot 23 ranks in the top 10% or better for BW, Calving Ease, Maternal Calving Ease, REA, Marbling and Fat.

PERF	AOD	BW	205D	365D	2015 EPDs	BW	WW	YW	MILK
	2	79	717	1310		+0.0	53	92	24

LOT **24**

## Benchmark Daybreak 86'14

Male LAA 86B March 12 2014 1779927



MCC DAYBREAK AMF CAF NHF DDF  
Sire: **G A R DAYBREAK 6860 DDC (1693219)**  
G A R OBJECTIVE 277L AMF DDC

WHITSTONE BARON W279 AMF NHF  
Dam: **BENCHMARK EVA BLACKBIRD 95'12 (1696776)**  
BENCHMARK EVA BLACKBIRD 9122

BOYD NEW DAY 8005 AMF CAF NHF DDF  
MCC MISS FOCUS 134 AMF NHF  
S S OBJECTIVE T510 OT26 DMF AMF CAF NHF DDF  
G A R RETAIL PRODUCT 2195 NHF DDC

D H D TRAVELER 6807 AMF NHF  
G A R EXT 704 AMF  
S A V FINAL ANSWER 0035 AMF CAF NHF DDF  
BENCHMARK EVA BLACKBIRD 7136

CARCASS EPDs	ACTUAL
MARB +0.64	% IMF 4.64
REA +0.69	REA 1.13
Fat -.007	Rib Fat 0.32
	LMY 59.7

A heifer bull here ranking in the top 10% or better for BW, CE, MCE, REA and Marbling. Note the genetics of 6807 and Final Answer on the bottom side.

PERF	AOD	BW	205D	365D	2015 EPDs	BW	WW	YW	MILK
	2	61	657	1157		-2.1	51	89	24





# Bulls Sired by G A R Daybreak 6860

LOT  
**25**

## Benchmark Daybreak 106'14

Male BFL 106B March 17 2014 1779817



MCC DAYBREAK AMF CAF NHF DDF  
Sire: **G A R DAYBREAK 6860 DDC (1693219)**  
G A R OBJECTIVE 277L AMF DDC

ROYAL PREDESTINED DRCC 8020U AMF NHF  
Dam: **BENCHMARK ISABELLA 225'11 (1649549)**  
LCOG ISABELLA RG748

BOYD NEW DAY 8005 AMF CAF NHF DDF  
MCC MISS FOCUS 134 AMF NHF  
S S OBJECTIVE T510 OT26 DMF AMF CAF NHF DDF  
G A R RETAIL PRODUCT 2195 NHF DDC

G A R PREDESTINED AMF CAF NHF DDC  
THOMAS LUCY 0775  
O C C GREAT PLAINS 943G AMF CAF NHF DDF  
LCC ISABELLA K3153

CARCASS EPDs	ACTUAL
MARB +0.75	% IMF 3.63
REA +0.70	REA 1.08
Fat +.005	Rib Fat 0.31
	LMY 61.2

This guy ranks in the top 10% or better for WW, YW, Milk, Calving Ease, Maternal Calving Ease, REA and Marbling. Note "Casey" and OCC Great Plains on the bottom side.

PERF	AOD	BW	205D	365D	2015 EPDs	BW	WW	YW	MILK
	2	88	747	1380		+1.3	56	97	28

LOT  
**26**

## Benchmark Daybreak 107'14

Male BFL 107B March 17 2014 1779816



MCC DAYBREAK AMF CAF NHF DDF  
Sire: **G A R DAYBREAK 6860 DDC (1693219)**  
G A R OBJECTIVE 277L AMF DDC

BENCHMARK NEXT STEP 8289  
Dam: **BENCHMARK LUCY 236'11 (1649559)**  
BENCHMARK LUCY 9281

BOYD NEW DAY 8005 AMF CAF NHF DDF  
MCC MISS FOCUS 134 AMF NHF  
S S OBJECTIVE T510 OT26 DMF AMF CAF NHF DDF  
G A R RETAIL PRODUCT 2195 NHF DDC

THREE TREES NEXT STEP AMF CAF NHF DDF  
BALE 361Z AMBUSH 63E  
G A R EFFICIENCY 7295 AMF CAF NHF DDF  
ROYAL LUCY DRCC 2135M

CARCASS EPDs	ACTUAL
MARB +0.81	% IMF 5.75
REA +0.35	REA 1.13
Fat -.020	Rib Fat 0.19
	LMY 63.3

Heifer bull status on this guy with a top 4% for Marbling. The Next Step 8289 daughters are really moderate, very feminine with wonderful dispositions.

PERF	AOD	BW	205D	365D	2015 EPDs	BW	WW	YW	MILK
	2	68	696	1191		-2.7	49	89	22

LOT  
**27**

## Benchmark Daybreak 131'14

Male BFL 131B March 25 2014 1779836



MCC DAYBREAK AMF CAF NHF DDF  
Sire: **G A R DAYBREAK 6860 DDC (1693219)**  
G A R OBJECTIVE 277L AMF DDC

BENCHMARK PREDESTINED 8301 AMF DDF  
Dam: **BENCHMARK LASSIE 216'11 (1649543)**  
BENCHMARK LASSIE 7217

BOYD NEW DAY 8005 AMF CAF NHF DDF  
MCC MISS FOCUS 134 AMF NHF  
S S OBJECTIVE T510 OT26 DMF AMF CAF NHF DDF  
G A R RETAIL PRODUCT 2195 NHF DDC

G A R PREDESTINED AMF CAF NHF DDC  
G A R T510 TRAVELER 264 AMF  
SUGAR LOAF DIRECT HIT N021 AMF CAF NHF DDF  
BENCHMARK LASSIE 10'97

CARCASS EPDs	ACTUAL
MARB +0.81	% IMF 4.73
REA +0.55	REA 1.04
Fat -.001	Rib Fat 0.27
	LMY 60.4

From a "Catalyst" heifer that has done a great job. A heifer bull here ranking in the top 10% or better for BW, YW, Calving Ease, Maternal Calving Ease, REA, and Marbling. Excels at all the economic traits.

PERF	AOD	BW	205D	365D	2015 EPDs	BW	WW	YW	MILK
	2	78	707	1214		+1.0	55	98	24

# Bulls Sired by G A R Daybreak 6860

LOT 28

## Benchmark Daybreak 144'14

Male BFL 144B March 31 2014 1779842



MCC DAYBREAK AMF CAF NHF DDF  
Sire: **G A R DAYBREAK 6860 DDC (1693219)**  
G A R OBJECTIVE 277L AMF DDC

WHITSTONE BARON W279 AMF NHF  
Dam: **BENCHMARK LUCY 150'12 (1672108)**  
BENCHMARK LUCY 9189

BOYD NEW DAY 8005 AMF CAF NHF DDF  
MCC MISS FOCUS 134 AMF NHF  
S S OBJECTIVE T510 OT26 DMF AMF CAF NHF DDF  
G A R RETAIL PRODUCT 2195 NHF DDC

D H D TRAVELER 6807 AMF NHF  
TG A R EXT 704 AMF  
G A R EFFICIENCY 7295 AMF CAF NHF DDF  
BENCHMARK LUCY 66

CARCASS EPDs	ACTUAL
MARB +0.68	% IMF 7.07
REA +0.54	REA 1.12
Fat -.013	Rib Fat 0.26
	LMY 61.2

This guy ranks in the top 15% or better for WW, YW, Milk, Calving Ease, Maternal Calving Ease, REA, Marbling and Fat. Very impressive. Check out Lot 9, he is a Midland from the Elite cow Lucy 66.

PERF	AOD	BW	205D	365D	2015 EPDs	BW	WW	YW	MILK
	2	82	725	1209		+1.8	55	94	25

LOT 29

## Benchmark Daybreak 149'14

Male BFL 149B April 2 2014 1779847



MCC DAYBREAK AMF CAF NHF DDF  
Sire: **G A R DAYBREAK 6860 DDC (1693219)**  
G A R OBJECTIVE 277L AMF DDC

G A R PROPHET CAF NHF DDF  
Dam: **BENCHMARK PATRICIA 35'12 (1702240)**  
ROYAL PATRICIA DRCC 7022T

BOYD NEW DAY 8005 AMF CAF NHF DDF  
MCC MISS FOCUS 134 AMF NHF  
S S OBJECTIVE T510 OT26 DMF AMF CAF NHF DDF  
G A R RETAIL PRODUCT 2195 NHF DDC

C R A BEXTOR 872 5205 608 AMF CAF NHF DDF  
G A R OBJECTIVE 1885 AMF NHF DDF  
B/R NEW DESIGN 036  
ROYAL PATRICIA DRCC 2039M AMF NHF

CARCASS EPDs	ACTUAL
MARB +1.07	% IMF 7.15
REA +0.65	REA 1.18
Fat -.003	Rib Fat 0.24
	LMY 62.3

Two year old dam is by Prophet, the sire of Benchmark's Micah, the #1 Angus bull in all of Canada, ranked for Marbling. Lot 29 ranks in the top 1% for Marbling and Total Maternal, top 2% for Milk and Maternal Calving Ease, top 4% for WW, YW, Calving Ease and REA. Could use him on some registered cows.

PERF	AOD	BW	205D	365D	2015 EPDs	BW	WW	YW	MILK
	2	90	753	1225		+1.3	61	106	29

LOT 30

## Benchmark Daybreak 153'14

Male BFL 153B April 2 2014 1779848



MCC DAYBREAK AMF CAF NHF DDF  
Sire: **G A R DAYBREAK 6860 DDC (1693219)**  
G A R OBJECTIVE 277L AMF DDC

G A R NEW DESIGN 5050 AMF CAF NHF DDC  
Dam: **BENCHMARK RITA 8'12 (1672014)**  
BENCHMARK RITA 073

BOYD NEW DAY 8005 AMF CAF NHF DDF  
MCC MISS FOCUS 134 AMF NHF  
S S OBJECTIVE T510 OT26 DMF AMF CAF NHF DDF  
G A R RETAIL PRODUCT 2195 NHF DDC

B/R NEW DESIGN 036 AMF CAF NHF DDC  
G A R PRECISION 706 AMF NHC  
STANDARD HILL PAYOFF 20P AMF NHF  
BENCHMARK RITA 82

CARCASS EPDs	ACTUAL
MARB +0.79	% IMF 5.54
REA +0.81	REA 1.10
Fat -.006	Rib Fat 0.39
	LMY 59.0

Very impressive 205D weight on 153'14. He ranks in the top 5% or better for WW, YW, Milk, Total Maternal, REA and Marbling. Note Lot 11 is from Rita 073.

PERF	AOD	BW	205D	365D	2015 EPDs	BW	WW	YW	MILK
	2	90	810	1391		+2.4	60	104	32

# Reference Sire

## Triara Made to Order 366Y

### 13 Sons Sell

Avg. BW: 85 lbs. Avg. 205D: 659 lbs. Avg 365 D 1,151 lbs



#### Genomic Enhanced EPDs

BW  
+2.4

WW  
+51

YW  
+103

Milk  
+34

MARB  
+0.24

REA  
+0.49

Fat  
+0.037

PERF	AOD	BW	205D	365D	Value Index	\$W	\$F	\$G	\$B
	5	82	N/A	N/A		47.74	51.50	14.04	99.59



CONNEALY ONWARD AMF NHF CAF DDF DMF  
Sire: **SITZ UPWARD 307R 1385926 AMF NHF CAF DMF DDF**  
SITZ HENRIETTA PRIDE 81M

CONNEALY LEAD ON AMF NHF CAF DDF DMF  
ALTUNE OF CONANGA 6104  
SITZ VALUE 7097 NHF CAF DDF  
SITZ HENRIETTA PRIDE 1370

RITO 2A63 OF 2536 205 NHF CAF AMC  
Dam: **RBF RITA 6A98 4TV7 2A63 1433586 AMF**  
RBF ROTA 4TV7 6V18 8180

B A R EXT TRAVELER 205 AMF NHF CAF DDF DMF  
G A R PRECISION 2536 205 NHF CAF AMC  
SITZ TRAVELER 8180 AMF NHF CAF DDF  
RITA 6V18 OF 0M29 692



### RBF Rita 6A98 4TV7 2A63

Dam of **Made to Order** is by a son of **Traveler 205**, with the dam being the very elite **2536** cow.

We purchased Made to Order out of the Triara Genetics 2011 Fall Production Sale. Made to Order is sired by the ever popular Sitz Upward 307R out of a very complete dam featuring Traveler 205, G A R Precision 2536 and Sitz Traveler 8180. Made to Order ranks in the top 1% for Milk and Total Maternal, top 7% for Yearling Weight and Carcass Weight, top 15% for REA and top 25% for Weaning Weight. The sons of Made to Order will add a touch of frame and pounds to your calf crop.



# Bulls Sired by Triara Made to Order 366Y

LOT  
**31**

## Benchmark Made to Order 5'14

Male BFL 5B February 17 2014 1779761



CARCASS EPDs	ACTUAL
MARB +0.53	% IMF 4.06
REA +0.44	REA 1.10
Fat +.013	Rib Fat 0.29
	LMY 61.3

SITZ UPWARD 307R DMF AMF CAF NHF DDF  
Sire: **TRIARA MADE TO ORDER 366Y (1613766)**  
RBF RITA 6A98 4TV7 2A63 AMF

CONNELY ONWARD DMF AMF CAF NHF DDF  
SITZ HENRIETTA PRIDE 81M  
RITO 2A63 OF 2536 205 AMC CAF NHF  
RBF RITA 4TV7 6V18 8180

G A R PREDESTINED AMF CAF NHF DDC  
Dam: **BENCHMARK WENDY 94 (1521231)**  
PRIDE N083 OF WHITESTONE

B/R NEW DESIGN 036 AMF CAF NHF DDC  
G A R EXT 4206  
A A R NEW TREND  
FINKS PRIDE 6196 25 6148

PERF	AOD	BW	205D	365D	2015 EPDs	BW	WW	YW	MILK
	5	72	686	1128	+0.0	48	89	29	

Maternal brother at Wolfater Ranch and a maternal sister will calve this spring at Benchmark. Lot 31 ranks in the top 5% or better for BW, Milk and Maternal Calving Ease and in the top 20% or better for REA and Marbling.

LOT  
**32**

## Benchmark Made to Order 8'14

Male BFL 8B February 18 2013 1741619



CARCASS EPDs	ACTUAL
MARB +0.23	% IMF 3.37
REA +0.45	REA 1.04
Fat +.019	Rib Fat 0.30
	LMY 60.8

SITZ UPWARD 307R DMF AMF CAF NHF DDF  
Sire: **TRIARA MADE TO ORDER 366Y (1613766)**  
RBF RITA 6A98 4TV7 2A63 AMF

CONNELY ONWARD DMF AMF CAF NHF DDF  
SITZ HENRIETTA PRIDE 81M  
RITO 2A63 OF 2536 205 AMC CAF NHF  
RBF RITA 4TV7 6V18 8180

SITZ TRAVELER 043  
Dam: **BENCHMARK ELBINA 839 (1461702)**  
ROYAL ELBINA DRCC 2043M NHF

TRAVELER 124 G D A R  
SITZ EVERELDA ENTENSE 1137  
TWIN VALLEY PRECISION E161 AMF CAF NHC DDF  
THOMAS ELBINA 0183 AMF

PERF	AOD	BW	205D	365D	2015 EPDs	BW	WW	YW	MILK
	6	86	662	1180	+1.7	47	87	25	

Maternal brother at Seven Persons Grazing, Lot 32 ranks in the top 20% or better for Milk, Total Maternal, Maternal Calving Ease and REA.

LOT  
**33**

## Benchmark Made to Order 16'14

Male BFL 16B February 23 2013 179768



CARCASS EPDs	ACTUAL
MARB +0.49	% IMF 4.91
REA +0.41	REA 1.01
Fat +.019	Rib Fat 0.35
	LMY 59.9

SITZ UPWARD 307R DMF AMF CAF NHF DDF  
Sire: **TRIARA MADE TO ORDER 366Y (1613766)**  
RBF RITA 6A98 4TV7 2A63 AMF

CONNELY ONWARD DMF AMF CAF NHF DDF  
SITZ HENRIETTA PRIDE 81M  
RITO 2A63 OF 2536 205 AMC CAF NHF  
RBF RITA 4TV7 6V18 8180

LCC FEW DOLLARS MORE H013N AMF NHC  
Dam: **BENCHMARK LUCY 97 NHF (1499288)**  
FORBESVIEW LUCY 215R

C A FUTURE DIRECTION 5321 AMC CAF NHC DDF  
LCC LAKINA K3218  
KMK ALLIANCE 6595 187 AMF CAF NHF DDF  
TOEBBEN MISS LUCY 1086

PERF	AOD	BW	205D	365D	2015 EPDs	BW	WW	YW	MILK
	5	81	740	1275	-0.4	51	93	35	

The dam Lucy 97 is Elite with four calves ratioing 112. A son of Lucy 97 serves at Richard Hieberts' and a daughter is in the herd. 16'14 ranks in the top 1% for Milk and Total Maternal, top 4% for BW and Maternal Calving Ease, top 15% for YW.

LOT  
**34**

## Benchmark Made to Order 17'14

Male BFL 17B February 24 2014 1779770



CARCASS EPDs	ACTUAL
MARB +0.26	% IMF 2.99
REA +0.53	REA 1.19
Fat -.001	Rib Fat 0.23
	LMY 63.1

SITZ UPWARD 307R DMF AMF CAF NHF DDF  
Sire: **TRIARA MADE TO ORDER 366Y (1613766)**  
RBF RITA 6A98 4TV7 2A63 AMF

CONNELY ONWARD DMF AMF CAF NHF DDF  
SITZ HENRIETTA PRIDE 81M  
RITO 2A63 OF 2536 205 AMC CAF NHF  
RBF RITA 4TV7 6V18 8180

PAPA FORTE 1921 DMF  
Dam: **BENCHMARK RITA 812 (1461607)**  
BIG COUNTRY RITA 4P AMF NHF

PAPA OPTIMA 9818  
PAPA ENVIOS BLACKBIRD 8832  
TWIN VALLEY PRECISION E161 AMF CAF NHC DDF  
WHITESTONE RITA J054 OF F281

PERF	AOD	BW	205D	365D	2015 EPDs	BW	WW	YW	MILK
	6	82	644	1093	+1.4	41	77	31	

Rita 812 has got the job done with a daughter in the herd, and sons at Bayntons'. Hengerer and Oczkowski's. Lot 34 ranks in the top 1% for Milk and top 10% for REA.

# Bulls Sired by Triara Made to Order 366Y

LOT **35**

## Benchmark Made to Order 35'14

Male BFL 35B February 28 2014 1779780



SITZ UPWARD 307R DMF AMF CAF NHF DDF  
Sire: **TRIARA MADE TO ORDER 366Y (1613766)**  
RBF RITA 6A98 4TV7 2A63 AMF

G A R EFFICIENCY 7295 AMF CAF NHF DDF  
Dam: **BENCHMARK LADY HEATHER 91 NHF (1499287)**  
BENCHMARK LADY HEATHER 6293 AMF NHC

CONNELLY ONWARD DMF AMF CAF NHF DDF  
SITZ HENRIETTA PRIDE 81M  
RITO 2A63 OF 2536 205 AMC CAF NHF  
RBF RITA 4TV7 6V18 8180

S S OBJECTIVE T510 OT26 DMF AMF CAF NHF DDF  
G A R ENHAVER G113 NHF  
RITO 2V1 OF 2536 1407 AMC CAF NHF DDC  
BENCHMARK LADY HEATHER 4209

CARCASS EPDs	ACTUAL
MARB +0.29	% IMF 5.29
REA +0.54	REA 1.32
Fat +.007	Rib Fat 0.28
	LMY 62.6

This guy ranks in the top 7% for BW, top 8% for Milk, Maternal Calving Ease, top 10% for REA and top 20% for YW. Robert Johnston has a son of Lady Heather 91 from sale XVI.

PERF	AOD	BW	205D	365D	2015 EPDs	BW	WW	YW	MILK
	5	82	617	1077		+3	46	91	26

LOT **36**

## Benchmark Made to Order 36'14

Male BFL 36B March 1 2014 1779783



SITZ UPWARD 307R DMF AMF CAF NHF DDF  
Sire: **TRIARA MADE TO ORDER 366Y (1613766)**  
RBF RITA 6A98 4TV7 2A63 AMF

THREE TREES NEXT STEP AMF CAF NHF DDF  
Dam: **BENCHMARK ELBA 8263 (1488148)**  
BALE 361Z AMBUSH 63E

CONNELLY ONWARD DMF AMF CAF NHF DDF  
SITZ HENRIETTA PRIDE 81M  
RITO 2A63 OF 2536 205 AMC CAF NHF  
RBF RITA 4TV7 6V18 8180

SUMMITCREST HIGH PRIME OH29 AMF CAF NHF  
G A R PRECISION 706 AMF NHC  
PARAMONT AMBUSH 2172 AMF CAF NHF DDF  
JOHNSTON 361Z TRADITION 223C

CARCASS EPDs	ACTUAL
MARB +0.39	% IMF 3.26
REA +0.37	REA 1.06
Fat -.009	Rib Fat 0.29
	LMY 60.6

The Next Step cattle are moderate, real easy to work with and the females are the right kind. Elba 8263 has two of her three daughters in the herd.

PERF	AOD	BW	205D	365D	2015 EPDs	BW	WW	YW	MILK
	6	86	619	1126		+1.7	45	87	21

LOT **37**

## Benchmark Made to Order 37'14

Male BFL 37B March 1 2014 1779782



SITZ UPWARD 307R DMF AMF CAF NHF DDF  
Sire: **TRIARA MADE TO ORDER 366Y (1613766)**  
RBF RITA 6A98 4TV7 2A63 AMF

THREE TREES NEXT STEP AMF CAF NHF DDF  
Dam: **BENCHMARK ELBA 928 (1521124)**  
BALE 361Z AMBUSH 63E

CONNELLY ONWARD DMF AMF CAF NHF DDF  
SITZ HENRIETTA PRIDE 81M  
RITO 2A63 OF 2536 205 AMC CAF NHF  
RBF RITA 4TV7 6V18 8180

SUMMITCREST HIGH PRIME OH29 AMF CAF NHF DDF  
G A R PRECISION 706 AMF NHC  
PARAMONT AMBUSH 2172 AMF CAF NHF DDF  
JOHNSTON 361Z TRADITION 223C

CARCASS EPDs	ACTUAL
MARB +0.39	% IMF 2.64
REA +0.41	REA 1.18
Fat -.011	Rib Fat 0.22
	LMY 62.9

Lot 37 is 37B. What are the chances of that happening? Lot 37 is a full brother to Lot 36. Elba 928 has a Baron son at Taylor's. Notice the low Fat EPDs on these Made to Order bulls, they will improve yield.

PERF	AOD	BW	205D	365D	2015 EPDs	BW	WW	YW	MILK
	5	88	615	1069		+1.8	46	87	18

# Bulls Sired by Triara Made to Order 366Y

LOT  
**38**

## Benchmark Made to Order 42'14

Male BFL 42B March 3 2014 1779785



SITZ UPWARD 307R DMF AMF CAF NHF DDF  
Sire: **TRIARA MADE TO ORDER 366Y (1613766)**  
RBF RITA 6A98 4TV7 2A63 AMF

STANDARD HILL PAYOFF 20P AMF NHF  
Dam: **BENCHMARK EVERELDA ENTENSE 099 (1565912)**  
BENCHMARK EVERELDA ENTENSE 829

CONNELLY ONWARD DMF AMF CAF NHF DDF  
SITZ HENRIETTA PRIDE 81M  
RITO 2A63 OF 2536 205 AMC CAF NHF  
RBF RITA 4TV7 6V18 8180

C A FUTURE DIRECTION 5321 AMC CAF NHC DDF  
STANDARD HILL QUEEN MOTHER 13M  
G A R RETAIL PRODUCT AMF CAF NHF DDF  
EVERELDA ENTENSE DRLL 3089N

CARCASS EPDs	ACTUAL
MARB +0.38	% IMF 4.13
REA +0.37	REA 0.93
Fat +.005	Rib Fat 0.21
	LMY 62.5

This guy traces to the 1407 daughter 3089N, she a donor for Benchmark who traces to Sitz Everelda Entense 1905, the Beartooth Ranch donor. A Daybreak son from 099 works for Ike at Rosetown Farming Co.

PERF	AOD	BW	205D	365D	2015 EPDs	BW	WW	YW	MILK
	5	100	728	1286		+3.7	48	91	31

LOT  
**39**

## Benchmark Made to Order 44'14

Male BFL 44B March 4 2014 1779787



SITZ UPWARD 307R DMF AMF CAF NHF DDF  
Sire: **TRIARA MADE TO ORDER 366Y (1613766)**  
RBF RITA 6A98 4TV7 2A63 AMF

STANDARD HILL PAYOFF 20P AMF NHF  
Dam: **BENCHMARK SALLY 8197 (1444334)**  
SUPERB 410H LASS

CONNELLY ONWARD DMF AMF CAF NHF DDF  
SITZ HENRIETTA PRIDE 81M  
RITO 2A63 OF 2536 205 AMC CAF NHF  
RBF RITA 4TV7 6V18 8180

C A FUTURE DIRECTION 5321 AMC CAF NHC DDF  
STANDARD HILL QUEEN MOTHER 13M  
F A R KRUGERRAND 410H AMF CAF NHF DDF  
BEAU VALLEY LASS

CARCASS EPDs	ACTUAL
MARB +0.29	% IMF 3.67
REA +0.40	REA 1.21
Fat +.012	Rib Fat 0.26
	LMY 61.9

Sally 8197 has had four heifer calves prior to 44B. Two daughters are retained at Benchmark. Lot 39 ranks in the top 1% for Milk, top 6% for BW, Top 10% for Calving Ease and top 25% for YW and REA.

PERF	AOD	BW	205D	365D	2015 EPDs	BW	WW	YW	MILK
	6	79	666	1046		+.2	46	88	30

LOT  
**40**

## Benchmark Made to Order 64'14

Male LAA 64B March 8 2014 1779924



SITZ UPWARD 307R DMF AMF CAF NHF DDF  
Sire: **TRIARA MADE TO ORDER 366Y (1613766)**  
RBF RITA 6A98 4TV7 2A63 AMF

G A R EFFICIENCY 7295 AMF CAF NHF DDF  
Dam: **BENCHMARK LADY T 9134 (1499472)**  
BENCHMARK LADY T 6144

CONNELLY ONWARD DMF AMF CAF NHF DDF  
SITZ HENRIETTA PRIDE 81M  
RITO 2A63 OF 2536 205 AMC CAF NHF  
RBF RITA 4TV7 6V18 8180

S S OBJECTIVE T510 OT26 DMF AMF CAF NHF DDF  
G A R ENHAVER G113 NHF  
STEVENS ON AMBUSH 9731  
IRON SPRING JOHN HENRY MARSHA

CARCASS EPDs	ACTUAL
MARB +0.41	% IMF 3.18
REA +0.21	REA 0.96
Fat -.005	Rib Fat 0.18
	LMY 63.5

Lady T 9134 is Elite by Canadian Angus Association standards with 4 calves ratiing 106. She has a Midland heifer retained. 64B ranks in the top 30% for BW, WW, YW, Milk, Calving Ease, Marbling and Fat. Very useful bull in Lot 40.

PERF	AOD	BW	205D	365D	2015 EPDs	BW	WW	YW	MILK
	5	85	712	1282		+1.0	51	92	27



# Bulls Sired by Triara Made to Order 366Y

LOT  
**41**

## Benchmark Made to Order 70'14

Male LAA 70B March 9 2014 1779925



SITZ UPWARD 307R DMF AMF CAF NHF DDF  
Sire: **TRIARA MADE TO ORDER 366Y (1613766)**  
RBF RITA 6A98 4TV7 2A63 AMF

G A R EFFICIENCY 7295 AMF CAF NHF DDF  
Dam: **BENCHMARK TIBBIE D 0114 (1565628)**  
BENCHMARK TIBBIE D 744

CONNELLY ONWARD DMF AMF CAF NHF DDF  
SITZ HENRIETTA PRIDE 81M  
RITO 2A63 OF 2536 205 AMC CAF NHF  
RBF RITA 4TV7 6V18 8180

S S OBJECTIVE T510 OT26 DMF AMF CAF NHF DDF  
G A R ENHAVER G113 NHF  
N BAR EMULATION EXT AMF CAF NHF DDF  
BENCHMARK TIBBIE D 5203

CARCASS EPDs	ACTUAL
MARB +0.34	% IMF 4.62
REA +0.42	REA 1.12
Fat +0.16	Rib Fat 0.29
	LMY 61.3

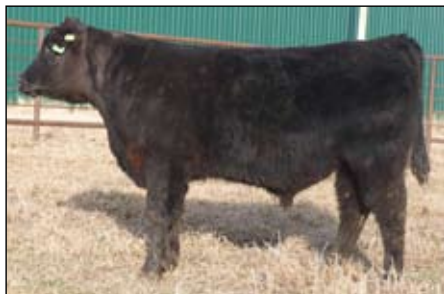
Brent McGlym has a Daybreak son from Tibbie D 0114 from sale XVIII. This bull carries a nice tabulation with Upward 307R, Efficiency 7295 and the immortal EXT.

PERF	AOD	BW	205D	365D	2015 EPDs	BW	WW	YW	MILK
	4	98	631	1195		+3.5	47	92	26

LOT  
**42**

## Benchmark Made to Order 94'14

Male BFL 94B March 14 2014 1779810



SITZ UPWARD 307R DMF AMF CAF NHF DDF  
Sire: **TRIARA MADE TO ORDER 366Y (1613766)**  
RBF RITA 6A98 4TV7 2A63 AMF

BON VIEW NEW DESIGN 1407 AMF CAF NHF DDC  
Dam: **G A R 1407 NEW DESIGN N85 AMF NHF (1385259)**  
G A R PRECISION 1831

CONNELLY ONWARD DMF AMF CAF NHF DDF  
SITZ HENRIETTA PRIDE 81M  
RITO 2A63 OF 2536 205 AMC CAF NHF  
RBF RITA 4TV7 6V18 8180

B/R NEW DESIGN 036 AMF CAF NHF DDC  
BON VIEW PRIDE 664  
G A R PRECISION 1680 AMC NHC  
G A R 6148 EMULATION 569

CARCASS EPDs	ACTUAL
MARB +0.51	% IMF 3.60
REA +0.53	REA 1.17
Fat +.002	Rib Fat 0.26
	LMY 61.8

The dam of Lot 42 ranks in the top 1% for BW, Calving Ease and Maternal Calving Ease. Lot 42 himself ranks in the top 1% for BW, top 2% for Maternal Calving Ease and top 10% for Calving Ease. He also ranks in the top 15% or better for Marbling, REA and Milk. N85 has had five sons sell in our bull sales and has two daughters in our cow herd.

PERF	AOD	BW	205D	365D	2015 EPDs	BW	WW	YW	MILK
	9	72	577	1113		-1.7	36	79	28



# RE/MAX

*Above the Crowd!*

**Bernie Schmid**  
Associate/Broker  
"28 years experience"

Cell (403) 642-7033  
Bus (403) 223-3344  
1-877-223-3658  
Fax (403) 223-3368

5309 - 48th Ave., Taber, AB T1G 1S7

Agricultural Specialist





# Bulls Sired by Triara Made to Order 366Y

LOT  
**43**

## Benchmark Made To Order 154'14

Male BFL 154B April 03 2014 1779851



SITZ UPWARD 307R DMF AMF CAF NHF DDF  
Sire: **TRIARA MADE TO ORDER 366Y (1613766)**  
RBF RITA 6A98 4TV7 2A63 AMF

S A V BANDOLIER 1916 AMF  
Dam: **BENCHMARK RITA 824 (1461678)**  
BIG COUNTRY RITA 4P AMF NHF

CONNELY ONWARD DMF AMF CAF NHF DDF  
SITZ HENRIETTA PRIDE 81M  
RITO 2A63 OF 2536 205 AMC CAF NHF  
RBF RITA 4TV7 6V18 8180

S V F BANDOLIER CAF  
BOYD FOREVER LADY 7122  
TWIN VALLEY PRECISION E161 AMF CAF NHF DDF  
WHITSTONE RITA J054 OF F281

CARCASS EPDs	ACTUAL
MARB +0.21	% IMF 3.92
REA +0.55	REA 1.26
Fat +0.013	Rib Fat 0.20
	LMY 63.6

PERF	AOD	BW	205D	365D	2014 EPDs	BW	WW	YW	MILK
	6	95	676	1096		+3.9	48	89	32

Rita 824 has sons at Arlin Cash and Darwin Balog's. If you are looking for more milk in your cows, these Made to Order bulls will sure do that. Lot 43 ranks in the top 1% for Milk and in the top 25% or better for YW and REA.

## Expected Progeny Differences

Expected Progeny Differences (EPDs) are the most powerful genetic tool we have for selecting the best animals for your breeding program. EPDs are values that predict how the future progeny of an animal will perform relative to the progeny of other animals in the same breed.

### EPDs:

- allow breeders to estimate a young animal's breeding value - that animal's value as a parent
- allow a fair comparison of breeding value by removing environmental bias such as climate, feed and special management
- the best tool available to compare animals between herds, countries and year of birth
- help breeders make informed decisions regarding breeding stock selection by evaluating numerous traits such as growth-related traits (BW, WW, YW, Milk), Carcass (REA, FAT, %IMF, etc.) and reproductive efficiency (CE, MCE, SC)
- estimate the group performance of one parent compared to the group performance of another parent, assuming similar mates. To evaluate seed stock, use EPDs, pedigree and visual assessment. With EPDs, the concept of "intermediate optimums: works best. Selection for one trait or for extremes generally results in unexpected consequences due to genetic correlations - for example, intense selection for high yearling weight will generally increase birth weight. Successful cattle breeding requires a thoughtful and balanced approach to optimize fertility, growth and carcass merit while improved profitability and efficiency.

With all the data that comes with each bull, I'm sure at times

it must be overwhelming. In order to use body composition EPDs of ultrasound data to their full potential, a breeder must have an understanding of the ultrasound terminology.

Several of the ultrasound measurements are comparable to the familiar carcass measurements. The data is simply collected on yearling bulls and heifers instead of market ready steers. Take a step back from looking at the numbers and become comfortable with the terminology.

**RIB FAT:** An external fat measurement taken between the 12th and 13th rib - the location a carcass would be split into quarters in the cooler reported in inches. Rib fat is the main factor in the USDA Yield Grade Equation.

**RIBEYE AREA (REA):** An area measurement of the longissimus dorsi, or ribeye muscle - reported in square inches. This image tends to be the most difficult to collect and requires the most highly skilled interpreting technician. Both the rib fat and ribeye area measurements are taken from the same image. The REA score is reported as sq. in. per 100 lbs. of body weight.

**RUMP FAT:** An external fat measurement taken from an image collected between the hooks and the pins of the animal, reported in inches. The rump fat measurement coupled with the rib fat measurement, is used to determine more accurately the overall external body fat, enhancing the accuracy of predicting percent retail product (PRP). In most cases, an animal will exhibit more fat over the rump than the rib due to

physiological process of "laying on fat." Therefore, more variation is often displayed in the rump fat measurements of a contemporary group than the rib fat. This image is highly repeatable and is the least difficult to collect or interpret.

**INTRAMUSCULAR FAT (%IMF):** This measurement determines the amount of fat within the muscle (similar to marbling) and is reported in "%." This measurement should be collected when cattle are maintaining a high level of nutrition. The field technician collects four images and the values generated by the interpreting software are averaged for an overall %IMF.

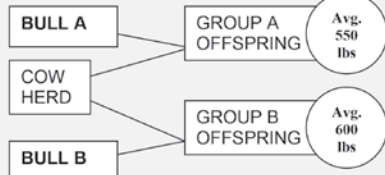
The Angus Associations, both AAA and CAA have adopted the CUP (Centralized Ultrasound Processing) Program for Ultrasound Carcass Data and are using this information for formulating Carcass EPDs. This is the 17th year we have provided ultrasound measurements as taken by certified technicians. We feel it is very important that you, our valued customer, know what is under the hide as that really does determine value. It has been determined through many studies that carcass traits are highly heritable and that feeding has only marginal effect on the resulting carcass - genetics determine carcass quality!



EPDs evaluate group averages and offspring's performance. They can not predict individual performance or weights.

For example, if Bull A (weaning weight EPD of +10) and Bull B (WW of +60) were randomly mated with ten similar cows, we would expect the group average weaning weight of Bull A's offspring to be 50 lbs lighter than that of Bull B's (60-10=50).

Calf	A	B
1	500	400
2	510	450
3	520	500
4	530	550
5	540	600
6	560	600
7	570	650
8	580	700
9	590	750
10	600	800
Avg.	550	600



**Accuracy** - reflects the reliability of the EPD value. High accuracy values (>.80) mean the EPD value is closer to the true breeding value than an EPD value with a lower accuracy (<.20).

Note that not all calves from Bull B have a higher weaning weight, but the average is 50 lbs higher.

### SPRING 2015 ANGUS EPD AVERAGES FOR ALL CALVES BORN IN 2014

#### Black Angus

BW: +2.7 WW: +45 YW: +79 Milk: +19 REA: +.27 Marb: +0.35 Fat: +0.013

#### Red Angus

BW: -0.6 WW: +49 YW: +75 Milk: +16 REA: +.04 Marb: +0.30 Fat: -0.012





# Reference Sire

## Benchmark Predestined 8301 "Catalyst"

7 Sons Sell

Avg. BW: 84 lbs. Avg. 205 D: 661 lbs. Avg. 365 D: 1,135 lbs



Genomic  
Enhanced  
EPDs

BW  
+1.9

WW  
+49

YW  
+93

Milk  
+21

MARB  
+0.96

REA  
+0.18

Fat  
+0.041

PERF	AOD	BW	205D	365D	Value Index	\$W	\$F	\$G	\$B
	4	81	631	1128		38.94	41.20	38.65	87.31



zoetis

B/R NEW DESIGN 036 AMF NHF CAF  
G A R PREDESTINED 1162499 AMF NHF CAF  
G A R EXT 4206

S S TRAVELER 6807 T510 AMF NHF CAF  
G A R T510 TRAVELER 264 1468234 AMF  
G A R EXPECTATION 1151



**G A R PREDESTINED**  
sire of Catalyst

V D A R NEW TREND 315 AMF NHF CAF  
B/R BLACKCAPEMPRESS 76  
N BAR EMULATION EXT AMF NHF CAF  
G A R 6807 TRAVELER 1432

D H D TRAVELER 6807 AMF NHF  
SS MISS HI SPADE A114  
G A R EXPECTATION 4915 AMF NHF  
G A R SLEEP EASY 2038



**G A R T510 TRAVELER 264**  
dam of Catalyst

Catalyst came in dam from Gardiner Angus Ranch who are the Premier Breeders of carcass genetics in North America and a charter member of US Premium Beef. As you can see from his picture he is phenotypically the best, so if you have an eye for cattle, he is the one. If you like to know what is under the hide and how his calves will perform, check out the numbers. He ranks #1 for Marbling of all bulls walking in Canada as listed on the CAA sire summary for Black Mature Sires. Quite a feat! He ranks in the top 9% for Yearling Weight and top 30% for Weaning Weight, 25% for Carcass Weight, so, if you are about top gaining cattle with the best in carcass capability, take a look at these Catalyst sons. His first daughters are in production and they certainly are the right kind being moderate in size with beautiful udders.

Catalyst is bred right being by the "Best Beef Bull in the Business", Predestined, and out of a very moderate T510 daughter that we have flushed with considerable success. Catalyst is the real deal.



# Bulls Sired by Benchmark Predestined 8301

LOT  
**44**

## Benchmark Catalyst 6'14

Male BFL 6B February 18 2014 1779762



G A R PREDESTINED AMF CAF NHF DDC  
Sire: **BENCHMARK PREDESTINED 8301 AMF DDF (1479702)**  
G A R T510 TRAVELER 264 AMF

STANDARD HILL PAYOFF 20P AMF NHF  
Dam: **BENCHMARK ROSEBUD 8192 AMF (1444332)**  
WILLABAR ROSEBUD 45P NHF

B/R NEW DESIGN 036 AMF CAF NHF DDC  
G A R EXT 4206  
S S TRAVELER 6807 T510 DMF AMF CAF NHF DDF  
G A R EXPECTATION 1151

C A FUTURE DIRECTION 5321 AMC CAF NHC DDF  
STANDARD HILL QUEEN MOTHER 13M  
C A FUTURE DIRECTION 5321 AMC CAF NHC DDF  
WILLABAR ROSBUD 110K

CARCASS EPDs	ACTUAL
MARB +0.78	% IMF 4.76
REA +0.27	REA 0.99
Fat +.039	Rib Fat 0.34
	LMY 59.6

A maternal brother by Baron serves at Kevin Huery and a maternal sister will calve this spring at Benchmark. Lot 44 ranks in the top 9% or better for BW, Calving Ease, Maternal Calving Ease and Marbling.

PERF	AOD	BW	205D	365D	2015 EPDs	BW	WW	YW	MILK
	6	81	689	1218		+5	43	78	24

LOT  
**45**

## Benchmark Catalyst 9'14

Male BFL 9B February 21 2014 1779765



G A R PREDESTINED AMF CAF NHF DDC  
Sire: **BENCHMARK PREDESTINED 8301 AMF DDF (1479702)**  
G A R T510 TRAVELER 264 AMF

G A R EFFICIENCY 7295 AMF CAF NHF DDF  
Dam: **BENCHMARK BLACKBIRD 923 (1499303)**  
BENCHMARK BLACKBIRD 661

B/R NEW DESIGN 036 AMF CAF NHF DDC  
G A R EXT 4206  
S S TRAVELER 6807 T510 DMF AMF CAF NHF DDF  
G A R EXPECTATION 1151

S S OBJECTIVE T510 OT26 DMF AMF CAF NHF DDF  
G A R ENHAVER G113 NHF  
STANDARD HILL PAYOFF 20P AMF NHF  
BENCHMARK BLACKBIRD 495 AMF

CARCASS EPDs	ACTUAL
MARB +0.75	% IMF 5.33
REA +0.22	REA 1.23
Fat +.010	Rib Fat 0.25
	LMY 62.2

A maternal sister is retained and a maternal brother by Baron is at Doug and Lee McClelland's. This guy ranks in the top 6% or better for BW, Calving Ease and Marbling.

PERF	AOD	BW	205D	365D	2015 EPDs	BW	WW	YW	MILK
	5	63	604	1012		-5	39	72	20

P  
R  
O  
C  
O  
R  
R  
A  
L

**403-892-2397**  
[procorralcleaners.com](http://procorralcleaners.com)

C  
L  
E  
A  
N  
E  
R  
S

Co-operative Limited

PO Box 284  
Milk River, Alberta TOK 1M0  
UFA.com

**LANE BELLEW**  
Agent  
Milk River Agency

DIRECT 403-647-3787  
CELL 406-450-8650  
FAX 403-674-2231  
[lane.bellew@agent.ufa.com](mailto:lane.bellew@agent.ufa.com)

# Bulls Sired by Benchmark Predestined 8301

LOT  
**46**



## Benchmark Catalyst 22'14

Male BFL 22B February 25 2014 1810463

G A R PREDESTINED AMF CAF NHF DDC  
Sire: **BENCHMARK PREDESTINED 8301 AMF DDF (1479702)**  
G A R T510 TRAVELER 264 AMF

G A R RETAIL PRODUCT AMF CAF NHF DDF  
Dam: **BENCHMARK BARBARA 70013 (1411692)**  
BENCHMARK BARBARA 271

B/R NEW DESIGN 036 AMF CAF NHF DDC  
G A R EXT 4206  
S S TRAVELER 6807 T510 DMF AMF CAF NHF DDF  
G A R EXPECTATION 1151

G A R PRECISION 1680 AMC NHC  
G A R EXT 4927  
EBON HILL MAGIC MAN 41'97  
BENCHMARK BARBARA 101'95

CARCASS EPDs	ACTUAL
MARB +0.71	% IMF 6.41
REA +0.25	REA 1.13
Fat +.018	Rib Fat 0.25
	LMY 61.9

22B ranks in the top 8% or better for BW, Calving Ease, Maternal Calving Ease and Marbling. A daughter from 70013 is a member of the Benchmark cow herd and Lance Schamber owns a son.

PERF	AOD	BW	205D	365D	2015 EPDs	BW	WW	YW	MILK
	7	74	656	1070		-.1	45	86	20

LOT  
**47**



## Benchmark Catalyst 33'14

Male BFL 33B February 28 2014 1810464

G A R PREDESTINED AMF CAF NHF DDC  
Sire: **BENCHMARK PREDESTINED 8301 AMF DDF (1479702)**  
G A R T510 TRAVELER 264 AMF

G A R EFFICIENCY 7295 AMF CAF NHF DDF  
Dam: **BENCHMARK NEW LASSIE 99 (1499292)**  
BENCHMARK NEW LASSIE 662 NHF

B/R NEW DESIGN 036 AMF CAF NHF DDC  
G A R EXT 4206  
S S TRAVELER 6807 T510 DMF AMF CAF NHF DDF  
G A R EXPECTATION 1151

S S OBJECTIVE T510 OT26 DMF AMF CAF NHF DDF  
G A R ENHAVER G113 NHF  
B/R PRECISE 242 AMF  
BENCHMARK NEW LASSIE 069

CARCASS EPDs	ACTUAL
MARB +0.79	% IMF 5.85
REA +0.10	REA 1.08
Fat +.013	Rib Fat 0.33
	LMY 59.3

A full brother sold to Bill Newton and a full sister is at Benchmark. Lot 47 ranks in the top 8% or better for BW, Calving Ease, Maternal Calving Ease and Marbling.

PERF	AOD	BW	205D	365D	2015 EPDs	BW	WW	YW	MILK
	5	84	631	1074		+.4	42	81	19

LOT  
**48**



## Benchmark Catalyst 55'14

Male LAA 55B March 06 2014 1810468

G A R PREDESTINED AMF CAF NHF DDC  
Sire: **BENCHMARK PREDESTINED 8301 AMF DDF (1479702)**  
G A R T510 TRAVELER 264 AMF

WHITESTONE BARON W279 AMF NHF  
Dam: **BENCHMARK LAVENDER LADY 037 (1565618)**  
BENCHMARK LAVENDER LADY 866 NHF

B/R NEW DESIGN 036 AMF CAF NHF DDC  
G A R EXT 4206  
S S TRAVELER 6807 T510 DMF AMF CAF NHF DDF  
G A R EXPECTATION 1151

D H D TRAVELER 6807 AMF NHF  
G A R EXT 704 AMF  
LCC FEW DOLLARS MORE H013N AMF NHC  
BENCHMARK LAVENDER LADY 6136

CARCASS EPDs	ACTUAL
MARB +0.69	% IMF 3.64
REA +0.28	REA 1.04
Fat +.024	Rib Fat 0.25
	LMY 61.6

The dam by Baron has a daughter in the herd. 55B ranks in the top 10% or better for BW, Calving Ease, Maternal Calving Ease and Marbling.

PERF	AOD	BW	205D	365D	2015 EPDs	BW	WW	YW	MILK
	4	83	682	1183		+1.0	46	82	23

# Bulls Sired by Benchmark Predestined 8301

LOT  
**49**



## Benchmark Catalyst 68'14

Male BFL 68B March 9 2014 1809831

G A R PREDESTINED AMF CAF NHF DDC  
Sire: **BENCHMARK PREDESTINED 8301 AMF DDF (1479702)**  
G A R T510 TRAVELER 264 AMF

PAPA FORTE 1921 DMF  
Dam: **BENCHMARK RITA 820 (1461654)**  
BIG COUNTRY RITA 4P AMF NHF

B/R NEW DESIGN 036 AMF CAF NHF DDC  
G A R EXT 4206  
S S TRAVELER 6807 T510 DMF AMF CAF NHF DDF  
G A R EXPECTATION 1151

PAPA OPTIMA 9818  
PAPA ENVIOUS BLACKBIRD 8832  
TWIN VALLEY PRECISION E161 AMF CAF NHC DDF  
WHITSTONE RITA J054 OF F281

CARCASS EPDs	ACTUAL
MARB +0.60	% IMF 5.66
REA +0.43	REA 1.14
Fat +.016	Rib Fat 0.28
	LMY 61.2

This guy ranks in the top 10% or better for Marbling, Calving Ease and Maternal Calving Ease, in the top 15% for BW and top 20% for REA ad Milk. The dam Rita 820 has a son at Baynton's and a daughter in Ontario.

PERF	AOD	BW	205D	365D	2015 EPDs	BW	WW	YW	MILK
	6	88	620	1115		+1.3	36	68	23

LOT  
**50**



## Benchmark Catalyst 74'14

Male BFL 74B March 09 2014 1809829

G A R PREDESTINED AMF CAF NHF DDC  
Sire: **BENCHMARK PREDESTINED 8301 AMF DDF (1479702)**  
G A R T510 TRAVELER 264 AMF

K C F BENNET COALITION SCC AMF CAF NHF DDF  
Dam: **BENCHMARK TIBBIE D 768 (1404636)**  
MVF TIBBIE 80J

B/R NEW DESIGN 036 AMF CAF NHF DDC  
G A R EXT 4206  
S S TRAVELER 6807 T510 DMF AMF CAF NHF DDF  
G A R EXPECTATION 1151

SITZ ALLIANCE 6595 DMF AMF CAF NHF DDF  
PLEASANT PILL OF CONANGA CAF  
CONNELLY DATELINE DDF  
MVF TIBBIE 14C

CARCASS EPDs	ACTUAL
MARB +0.72	% IMF 4.25
REA +0.06	REA 1.02
Fat +.038	Rib Fat 0.27
	LMY 60.8

Tibbie D 768 has had five daughters with two at Benchmark and one in Ontario. Lot 50 tells the same story as all of these Catalyst's low BW, ease of calving and top marbling with 74B ranking in the top 10% for BW, top 4% for Calving Ease, top 1% for Maternal Calving Ease and top 7% for Marbling.

PERF	AOD	BW	205D	365D	2015 EPDs	BW	WW	YW	MILK
	7	84	660	1155		+7	43	75	23

## BENCHMARK Beef

Your Carcass Source

Out of the problems that BSE inflicted on the cattle industry, we began our meat business, Benchmark Beef Inc. As you all remember, it was near impossible to get animals harvested unless you were a big player. We decided during that trying time period to harvest and merchandise our own beef. To begin with we fed and then merchandised our own purebred cattle that we didn't sell as breeding stock and today have expanded to merchandising our bull customers' cattle as well. Mike was able to "pedal meat" restaurant to restaurant in the beginning to now being the exclusive supplier to certain restaurants in Lethbridge. We have now evolved to having our own retail meat shop. BBI employs our own full time meat cutter (butcher) and our retail and wholesale business continues to grow.

We are forever grateful to those local people who gave us a chance by trying our product. We count Mocha Cabana, Top's Pizza, Pop's Pub, Sisters, D's Catering, Premium Sausage, Nutter's Natural Foods, Alberta Meat & Grocery and our relationship with the baseball fraternity among others as our valued customers.

It is one thing to talk carcass cattle. It is another to actually practice, "Pasture to Plate." It has not been easy but we have learned so much over the last years and the primary thing we learned is that there are cattle that make the grade and for sure there are cattle that don't.





# Bulls Sired by Benchmark Predestined 8301

LOT  
**51**

## Benchmark Catalyst 83'14

Male BFL 83B March 11 2014 1809832



CARCASS EPDs	ACTUAL
MARB +0.73	% IMF 3.95
REA +0.17	REA 1.01
Fat +.023	Rib Fat 0.28
	LMY 60.6

G A R PREDESTINED AMF CAF NHF DDC  
Sire: **BENCHMARK PREDESTINED 8301 AMF DDF (1479702)**  
G A R T510 TRAVELER 264 AMF

G A R EFFICIENCY 7295 AMF CAF NHF DDF  
Dam: **BENCHMARK TIBBIE D 090 (1565909)**  
BENCHMARK TIBBIE D 768

B/R NEW DESIGN 036 AMF CAF NHF DDC  
G A R EXT 4206  
S S TRAVELER 6807 T510 DMF AMF CAF NHF DDF  
G A R EXPECTATION 1151

S S OBJECTIVE T510 QT26 DMF AMF CAF NHF DDF  
G A R ENHAVER G113 NHF  
K C F BENNET COALITION SCC AMF CAF NHF DDF  
MVF TIBBIE 80J

PERF	AOD	BW	205D	365D	2015 EPDs	BW	WW	YW	MILK
	4	85	672	1201		+1.5	48	85	21

Check out the Grand Dam here. None other than the dam of Lot 50. A Daybreak daughter of Tibbie D 090 will calve this spring at Benchmark. 83B ranks in the top 7% or better for Calving Ease, Maternal Calving Ease and Marbling.

LOT  
**52**

## Benchmark Catalyst 90'14

Male BFL 90B March 13 2014 1820829



CARCASS EPDs	ACTUAL
MARB +0.72	% IMF 5.27
REA +0.37	REA 1.14
Fat +.033	Rib Fat 0.34
	LMY 60.4

G A R PREDESTINED AMF CAF NHF DDC  
Sire: **BENCHMARK PREDESTINED 8301 AMF DDF (1479702)**  
G A R T510 TRAVELER 264 AMF

STANDARD HILL PAYOFF 20P  
Dam: **Benchmark Lucy 895 (1444288)**  
BENCHMARK LUCY 4228

B/R NEW DESIGN 036 AMF CAF NHF DDC  
G A R EXT 4206  
S S TRAVELER 6807 T510 DMF AMF CAF NHF DDF  
G A R EXPECTATION 1151

C A FUTURE DIRECTION 5321 AMC CAF NHF DDF  
STANDARD HILL QUEEN MOTHER 13M  
PAPA FORTE 1921 DMF  
ROYAL LUCY DRCC 3029N

PERF	AOD	BW	205D	365D	2015 EPDs	BW	WW	YW	MILK
	6	86	697	1215		+9	42	79	25

From a Payoff daughter that has a son at Seven Persons Grazing and a daughter in the herd. This guy ranks in the top 10% or better for BW, Milk, Calving Ease, Maternal Calving Ease and Marbling. Consistent thru and thru and did you notice the birth weights on these Catalysts?

LOT  
**53**

## Benchmark Catalyst 98'14

Male BFL 98B March 15 2014 1809830



CARCASS EPDs	ACTUAL
MARB +0.91	% IMF 4.27
REA +0.32	REA 1.16
Fat +.020	Rib Fat 0.33
	LMY 59.9

G A R PREDESTINED AMF CAF NHF DDC  
Sire: **BENCHMARK PREDESTINED 8301 AMF DDF (1479702)**  
G A R T510 TRAVELER 264 AMF

G A R PREDESTINED AMF CAF NHF DDC  
Dam: **G A R PREDESTINED C F 2787 (1597819)**  
G A R 208 NEW DESIGN 2573 AMF CAF NHF DDF

B/R NEW DESIGN 036 AMF CAF NHF DDC  
G A R EXT 4206  
S S TRAVELER 6807 T510 DMF AMF CAF NHF DDF  
G A R EXPECTATION 1151

B/R NEW DESIGN 036 AMF CAF NHF DDC  
G A R EXT 4206  
BON VIEW NEW DESIGN 208 AMF CAC NHF DDF  
G A R EXPECTATION 461 AMF NHF

PERF	AOD	BW	205D	365D	2015 EPDs	BW	WW	YW	MILK
	7	95	703	1106		+3.0	51	89	22

From a cow we bought from Craigmore in Ontario. A full brother to Lot 53 is at Burke Creek Ranch. This guy ranks in the top 1% for Marbling.





**FORD LINCOLN COLLEGE**  
LETHBRIDGE • CANADA



3795 - 1st Ave. South, Lethbridge, AB T1J 0L4  
Bus: (403) 329-0333  
Toll Free: 1-800-461-5276  
Fax: (403) 329-3158  
E-Mail: cmsl@attcanada.net

**Taber Ford Sales Inc.**  
4402 - 46th Ave., Taber, AB T1G 2A4  
Bus: (403) 223-9654  
Toll Free: 1-800-223-9655  
Fax: (403) 223-4112

# Reference Sire

## G A R Ingenuity J2024

### 8 Sons Sell

Avg. BW: 87 lbs Avg. 205 D: 686 lbs. Avg. 365 D: 1213 lbs.



#### Genomic Enhanced EPDs

BW  
+3.4

WW  
+65

YW  
+114

Milk  
+30

MARB  
+1.09

REA  
+1.29

Fat  
-0.005

Owned by Gardiner Angus, Maplecrest Farms, Benchmark Angus.

PERF	AOD	BW	205D	365D	Value Index	\$W	\$F	\$G	\$B
	N/A	84	688	1323		49.63	73.45	53.12	153.68

G A R NEW DESIGN 5050  
Sire: **G A R INGENUITY**  
G A R OBJECTIVE 1067

TC TOTAL 410  
Dam: **MAPLECREST EVA 7010**  
MAPLECREST EVA 4108

B/R NEW DESIGN 036  
G A R PRECISION 706  
S S OBJECTIVE T510 OT26  
G A R RETAIL PRODUCT 2195

BON VIEW NEW DESIGN 208  
TC ERICA EILEEN 2047  
G A R EVEREST 9409  
MAPLECREST RBC EVA 133



Ingenuity J2024 is a bull we bought the spring of 2013 out of the Gardiner Spring Sale. We liked him as well as any of the 375 bulls selling and was the third high selling bull that day. He is a true meat machine and bred for economic superiority. Bulls that are greater than +1 for Marbling and REA are very rare. J2024 ranks in the top 1% for Yearling Weight, Milk, Total Maternal, REA, Carcass Weight and Marbling. The dam Maplecrest Eva 7010 is a donor for the Grimes Family in Ohio and has several high selling progeny to date.

J2024 scanned 7.03 for % IMF and 14.1 sq. inch REA with .27 inch of Rib Fat. His HD 50 K Zoetis score shows him scoring in the top 4% for CW and REA, top 8% for Marbling and top 25% for RFI.

# Bulls Sired by G A R Ingenuity J2024

LOT  
**54**

## Benchmark Ingenuity 76'14

Male BFL 76B March 10 2014 1779802



CARCASS EPDs	ACTUAL
MARB +0.73	% IMF 5.58
REA +0.88	REA 1.10
Fat -.002	Rib Fat 0.35
	LMY 58.9

G A R INGENUITY DDC  
Sire: **GAR INGENUITY J2024 DDC (1723492)**  
MAPLECREST EVA 7010 CAF NHF DDF

G A R NEW DESIGN 5050 AMF CAF NHF DDC  
G A R OBJECTIVE 1067 AMF DDF  
TC TOTAL 410 AMF CAF NHF DDF  
MAPLECREST EVA 4108

S A V BISMARCK 5682 AMF CAF NHF DDF  
Dam: **BENCHMARK NALIE 10'11 (1636601)**  
JOHNSTON MAX TRADITION 884C

G A R GRID MAKER AMF CAF NHF DDF  
S A V ABIGALE 0451  
G T MAXIMUM AMF CAF NHF DDF  
JOHNSTON LADY TRADITION 484X

PERF	AOD	BW	205D	365D	2015 EPDs	BW	WW	YW	MILK
	3	56	641	1136		+2.0	52	91	21

This bull is a twin. He ranks in the top 1% for REA, the top 6% for Marbling and top 20% or better for WW, YW, Calving Ease and Maternal Calving Ease. The Bismarck dam has a beautiful 2 year old heifer due to calve any day now.

LOT  
**55**

## Benchmark Ingenuity 85'14

Male BFL 85B March 12 2014 1779807



CARCASS EPDs	ACTUAL
MARB +0.92	% IMF 6.73
REA +0.68	REA 1.06
Fat -.012	Rib Fat 0.30
	LMY 60.1

G A R INGENUITY DDC  
Sire: **GAR INGENUITY J2024 DDC (1723492)**  
MAPLECREST EVA 7010 CAF NHF DDF

G A R NEW DESIGN 5050 AMF CAF NHF DDC  
G A R OBJECTIVE 1067 AMF DDF  
TC TOTAL 410 AMF CAF NHF DDF  
MAPLECREST EVA 4108

BENCHMARK NEXT STEP 8289  
Dam: **BENCHMARK BLACKBIRD 153'11 (1618330)**  
BENCHMARK BLACKBIRD 923

THREE TREES NEXT STEP AMF CAF NHF DDF  
BALE 361Z AMBUSH 63E  
G A R EFFICIENCY 7295 AMF CAF NHF DDF  
BENCHMARK BLACKBIRD 661

PERF	AOD	BW	205D	365D	2015 EPDs	BW	WW	YW	MILK
	3	79	620	1179		+0.0	48	86	22

Lot 55 ranks in the top 1% for marbling, top 3% for REA, top 5% for BW, top 9% for Fat and top 10% for Calving Ease.

LOT  
**56**

## Benchmark Ingenuity 104'14

Male BFL 104B March 17 2014 1779818



CARCASS EPDs	ACTUAL
MARB +0.88	% IMF 6.16
REA +0.73	REA 1.26
Fat +0.011	Rib Fat 0.29
	LMY 61.7

G A R INGENUITY DDC  
Sire: **GAR INGENUITY J2024 DDC (1723492)**  
MAPLECREST EVA 7010 CAF NHF DDF

G A R NEW DESIGN 5050 AMF CAF NHF DDC  
G A R OBJECTIVE 1067 AMF DDF  
TC TOTAL 410 AMF CAF NHF DDF  
MAPLECREST EVA 4108

BENCHMARK RIGHT TIME 9211  
Dam: **BENCHMARK BARBARA 94'11 (1618292)**  
BENCHMARK BARBARA 9149

ROYAL RIGHT TIME DRCC 6063S  
AAF BLACKCAP 15F DDF  
S S TRAVELER 6807 T510 DMF AMF CAF NHF DDF  
BENCHMARK BARBARA 70013

PERF	AOD	BW	205D	365D	2015 EPDs	BW	WW	YW	MILK
	3	90	659	1142		+1.9	49	92	25

94'11 first calf will calve this spring at Benchmark. 104B ranks in the top 2% for REA and Marbling and top 20% for Calving Ease and Maternal Calving Ease.

LOT  
**57**

## Benchmark Ingenuity 125'14

Male BFL 125B March 23 2014 1779832



CARCASS EPDs	ACTUAL
MARB +1.00	% IMF 5.91
REA +0.72	REA 1.5
Fat +0.025	Rib Fat 0.37
	LMY 59.5

G A R INGENUITY DDC  
Sire: **GAR INGENUITY J2024 DDC (1723492)**  
MAPLECREST EVA 7010 CAF NHF DDF

G A R NEW DESIGN 5050 AMF CAF NHF DDC  
G A R OBJECTIVE 1067 AMF DDF  
TC TOTAL 410 AMF CAF NHF DDF  
MAPLECREST EVA 4108

BENCHMARK PREDESTINED 8301 AMF DDF  
Dam: **BENCHMARK LUCY 54'11 (1618270)**  
BENCHMARK LUCY 97 NHF

G A R PREDESTINED AMF CAF NHF DDC  
G A R T510 TRAVELER 264 AMF  
LCC FEW DOLLARS MORE H013N AMF NHF  
FORBESVIEW LUCY 215R

PERF	AOD	BW	205D	365D	2015 EPDs	BW	WW	YW	MILK
	3	91	718	1259		+2.6	56	100	30

Special bull here! Top 1% for Marbling and Milk, top 2% for REA and Total Maternal, top 9% for YW and top 10% for WW and Maternal Calving Ease. A daughter from Lucy 54'11 is retained with a marbling EPD of +2.05. She is the third highest animal in all of Canada for Marbling.



# Bulls Sired by G A R Ingenuity J2024

LOT  
**58**

## Benchmark Ingenuity 140'14

Male BFL 140B March 30 2014 1779840



CARCASS EPDs	ACTUAL
MARB +0.80	% IMF 6.42
REA +0.74	REA 1.04
Fat -.004	Rib Fat 0.31
	LMY 59.7

G A R INGENUITY DDC  
Sire: **GAR INGENUITY J2024 DDC (1723492)**  
MAPLECREST EVA 7010 CAF NHF DDF

G A R NEW DESIGN 5050 AMF CAF NHF DDC  
G A R OBJECTIVE 1067 AMF DDF  
TC TOTAL 410 AMF CAF NHF DDF  
MAPLECREST EVA 4108

WHITSTONE BARON W279 AMF NHF  
Dam: **BENCHMARK ELBA 53'11 (1618271)**  
JOHNSTON MAX TRADITION 884C

D H D TRAVELER 6807 AMF NHF  
G A R EXT 704 AMF  
WOODHILL FORESIGHT AMF CAF NHF DDF  
BALE 361Z AMBUSH 63E

PERF	AOD	BW	205D	365D	2015 EPDs	BW	WW	YW	MILK
	3	94	735	1235		+2.3	55	94	26

Elba 53'11 has a son at Seven Persons Grazing from sale XVIII. Lot 58 traces to the Elite donor 63E. He ranks in the top 2% for REA, top 4% for Marbling, top 8% for Milk and top 15% for WW, YW and Carcass Weight. Selling your steers on the Grid?

LOT  
**59**

## Benchmark Ingenuity 146'14

Male LAA 146B April 1 2014 1779933



CARCASS EPDs	ACTUAL
MARB +0.92	% IMF 5.55
REA +0.73	REA 1.30
Fat +.021	Rib Fat 0.39
	LMY 59.1

G A R INGENUITY DDC  
Sire: **GAR INGENUITY J2024 DDC (1723492)**  
MAPLECREST EVA 7010 CAF NHF DDF

G A R NEW DESIGN 5050 AMF CAF NHF DDC  
G A R OBJECTIVE 1067 AMF DDF  
TC TOTAL 410 AMF CAF NHF DDF  
MAPLECREST EVA 4108

BENCHMARK PREDESTINED 8301 AMF DDF  
Dam: **BENCHMARK LAVENDER LADY 50'11 (1618156)**  
BENCHMARK LAVENDER LADY 918

G A R PREDESTINED AMF CAF NHF DDC  
G A R T510 TRAVELER 264 AMF  
STANDARD HILL PAYOFF 20P AMF NHF  
BENCHMARK LAVENDER LADY 5152

PERF	AOD	BW	205D	365D	2015 EPDs	BW	WW	YW	MILK
	3	96	690	1151		+4.2	52	97	26

A maternal brother by A011 was a top seller in sale XVIII to Rosetown Farming. 146B ranks in the top 1% for Marbling, top 2% for REA, top 8% for Milk and Carcass Weight, top 10% for YW and top 20% for WW



LOT  
**60**

## Benchmark Ingenuity 159'14

Male BFL 159B April 8 2014 1779853



CARCASS EPDs	ACTUAL
MARB +0.93	% IMF 5.71
REA +0.66	REA 1.14
Fat +.012	Rib Fat 0.31
	LMY 61.2

G A R INGENUITY DDC  
Sire: **GAR INGENUITY J2024 DDC (1723492)**  
MAPLECREST EVA 7010 CAF NHF DDF

G A R NEW DESIGN 5050 AMF CAF NHF DDC  
G A R OBJECTIVE 1067 AMF DDF  
TC TOTAL 410 AMF CAF NHF DDF  
MAPLECREST EVA 4108

BENCHMARK PREDESTINED 8301 AMF DDF  
Dam: **BENCHMARK NEW LASSIE 144'11 (1618321)**  
BENCHMARK NEW LASSIE 99

G A R PREDESTINED AMF CAF NHF DDC  
G A R T510 TRAVELER 264 AMF  
G A R EFFICIENCY 7295 AMF CAF NHF DDF  
BENCHMARK NEW LASSIE 662 NHF

PERF	AOD	BW	205D	365D	2015 EPDs	BW	WW	YW	MILK
	3	96	783	1324		+4.1	63	111	26

Maternal brother by A011 to Peter Boone at sale XVIII. Big time growth and carcass bull here, with rankings for Marbling and Carcass Weight in the top 1%, for REA 4%, for WW 3% and YW 2%.

LOT  
**61**

## Benchmark Ingenuity 160'14

Male LAA 160B April 8 2014 1779934



CARCASS EPDs	ACTUAL
MARB +.86	% IMF 4.76
REA +0.82	REA 0.96
Fat +.006	Rib Fat 0.22
	LMY 61.6

G A R INGENUITY DDC  
Sire: **GAR INGENUITY J2024 DDC (1723492)**  
MAPLECREST EVA 7010 CAF NHF DDF

G A R NEW DESIGN 5050 AMF CAF NHF DDC  
G A R OBJECTIVE 1067 AMF DDF  
TC TOTAL 410 AMF CAF NHF DDF  
MAPLECREST EVA 4108

ROYAL PREDESTINED DRCC 8020U AMF NHF  
Dam: **BENCHMARK BELLA 97'11 (1618165)**  
BENCHMARK BELLA 6208

G A R PREDESTINED AMF CAF NHF DDC  
THOMAS LUCY 0775  
BENCHMARK STRATEGY 332  
BELLA OF ALCAN 209

PERF	AOD	BW	205D	365D	2015 EPDs	BW	WW	YW	MILK
	3	95	648	1276		+4.6	50	90	27

This cow family takes me back a few years to a heifer I purchased from Alex Sera in 1969 who became the dam of Baros of Alcan Angus 40'73, the patriarch of the Crackerjack line of cattle. Boy, does time ever fly! Lot 61 shows top 1% for REA and top 3% for Marbling.

# Reference Sire

## G A R Efficiency 7295

1 Son Sells

Avg. BW: 86 lbs Avg. 205 D: 819 lbs Avg. 365 D: 1,251 lbs



### EPDs

BW	+1.3
WW	+49
YW	+85
Milk	+15
MARB	+0.61
REA	+0.23
Fat	-0.043

PERF	AOD	BW	205D	365D	Value Index	\$W	\$F	\$G	\$B
	2	83	808	1448		31.54	26.99	42.47	62.63

Efficiency is the bull selected by Mike and Myles Immerkar of Semex from the entire offering at Gardiner's in the spring of 2007. He was described by Mark Gardiner as "one of the true power bulls of 2007". His Sire, an ABS roster bull, ranks at the top of the list with respect to every trait measured.

Objective was the #2 bull for registrations in 2010 and has over 32,000 registered progeny. No sire can match his combination of \$B and \$W with such high accuracy. His dam is a paternal sister to Select Sires' Raindance bull who is renowned for thick sound females who have great udders with small teat size. The EXT 704 cow on the bottom side sold for \$40,000 and has generated in excess of \$750,000 in progeny sales and is a full sister to EXT 614 who sold for a valuation of

\$400,000. Efficiency's numbers are hard to beat, his sons are the right kind and his daughters are keepers.



**GAR EXT 704 Grand Dam**

Sire: S S TRAVELER 6807 T510 AMF NHF CAF  
**S S OBJECTIVE 5100T26N1179389 AMF NHF CAF**  
 S S MISS RITA R011 7R8 AMF NHF

DHD TRAVELER 6807 AMF NHF  
 S S MISS HI SPADE A114  
 S S RITO R011  
 S S MISS ULTRESS U56

Dam: G A R ENHANCER S365 AMF CAF  
**G A R ENHANCER G113 US14577479 NHF**  
 G A R PRECISION 2089 AMF NHF

PARAMOUNT AMBUSH 2172 AMF NHF CAF  
 G A R 5522 EMULATION G3  
 G A R PRECISION 1680 NHC AMC  
 G A R EXT 704 AMF

LOT  
**62**

## Benchmark Efficiency 134'14

Male BFL 134B March 27 2014 1779838



Sire: S S OBJECTIVE T510 OT26 DMF AMF CAF NHF DDF  
**G A R EFFICIENCY 7295 AMF CAF NHF DDF (1391447)**  
 G A R ENHAVER G113 NHF

Dam: S S TRAVELER 6807 T510 DMF AMF CAF NHF DDF  
**G A R T510 TRAVELER 264 AMF (1468234)**  
 G A R EXPECTATION 1151

S S TRAVELER 6807 T510 DMF AMF CAF NHF DDF  
 S S MISS RITA R011 7R8 AMF NHF  
 G A R ENHANCER 5365 AMF CAF NHF DDF  
 G A R PRECISION 2089 AMF NHF

D H D TRAVELER 6807 AMF NHF  
 S S MISS HI SPADE A114  
 G A R EXPECTATION 4915 AMF NHF  
 G A R SLEEP EASY 2038

CARCASS EPDs	ACTUAL
MARB +0.58	% IMF 5.05
REA +0.21	REA 1.16
Fat -0.16	Rib Fat 0.25
	LMY 62.9

PERF	AOD	BW	205D	365D	2015 EPDs	BW	WW	YW	MILK
	10	86	819	1251		+7	42	81	17

From the dam of Catalyst and 188Z, two bulls we are using in our program. She also has five daughters in service at Benchmark. If you are developing a cow herd and keeping the heifers, this guy will get the job done.



# Reference Sire

## Red LSF MEW Game Changer 1613Y 10 Sons Sell

Avg. BW: 90 lbs Avg. 205 D: 717 lbs. Avg. 365 D: 1253 lbs



### Genomic Enhanced EPDs

BW  
+4.5

WW  
+95

YW  
+149

Milk  
+10

MARB  
+0.91

REA  
+0.66

Fat  
+0.010

Owned by Orion Beef Group, Wood Red Angus, Benchmark Angus.

PERF	AOD	BW	205D	365D
	4	81	667	1401

RED PIE GRIDMASTER 589  
Sire: **RED L3JG-MEW GRIDIRON 806U RA1229644 OSF**  
RED LSF COVER GIRL LA414

RED LCB HOSS A444N  
RED PIE KRUGGER KANYON 353  
RED LCC NEW CHAPTER A705L  
RED LSF LOGAN H1375



RED LSF CANYON CLASSIC 3037N  
Dam: **RED MEW ELIZABETH 710T RA1199535 OSF**  
RED MS NSF MILLENIUM

RED BFCK CHEROKEE CNYN4912  
RED LSF LOGAN H1375 L1414  
RED NEO-SHO MILLENIUM 065G  
RED MS NSF KINGOFMATT G158

When you have Red Basin EXT 45T5 in the bull pen, it is difficult to find the next bull to take us forward in our quest to breed cattle, that will be economically better.

When you look at this bull's progeny you will see that he lives up to his name. He is a Game Changer! We love the performance, structural correctness and fleshing ability that he has and it is clear that he passes this on to his progeny as well as his superb carcass characteristics. Game Changer has one of the best maternal backgrounds that we have come across. His

paternal grand dam is from the #1 cow family at Ludvigson Stock Farms and sports a 108 MPPA. The high performance dam has a tremendous udder and is very easy keeping and has obtained a 101.3 MPPA and is backed up by 5 dams with over a 102 MPPA. We are very excited about getting his daughters into production.

Game Changer scanned 5.51% IMF with a big 15.4 sq. in. ribeye with 0.22 of fat cover and had a 365 day weight of 1401 lbs. He had the largest REA and 16th highest IMF score of

the Ludvigson 2012 Herd Builder Sale, and that is no small feat with 150 bulls selling.

Game Changer is the #1 Red Angus Bull on the Canadian Registry for Marbling and #1 for Ribeye for bulls with a better than +90 for Weaning Weight and a better than +130 for Yearling Weight. Terrific growth and carcass quality in Game Changer.

These Game Changer sons are thick and weigh up and carry out cross genetics to most Red Angus out there. Be sure to take a look at him prior to the sale.



# Bulls Sired by LSF MEW Game Changer 1613Y

LOT  
**63**

## Red Benchmark Momentum 10'14

Male BFR 10B February 26 2014 1777802



RED 3JG-MEW GRIDIRON 806U OSF  
Sire: **RED LSF MEW GAME CHANGER 1613Y OSF (1691731)**  
RED MEW ELIZABETH 710T OSF

RED BENCHMARK SURESHOT 8119  
Dam: **RED BENCHMARK LANA 60'11 (1618229)**  
RED BENCHMARK LANA 756

RED PIE GRIDMASTER 589 AMF OSF MAF  
RED LSF COVER GIRL LA414 P4046 OSF  
RED LSF CANYON CLASSIC 3037N OSF  
RED MS NSF MILLENIUM K145

RED CHAMPLAIN SERENADE 2513P OSF MAF  
RED PR BAR STAR 27R  
RED BASIN CHIEF JOSEPH 2751  
RED BAR-X LANA 133R

CARCASS EPDs	ACTUAL
MARB +0.64	% IMF 4.49
REA +0.38	REA 1.12
Fat +.020	Rib Fat 0.36
	LMY 59.8

This rascal carries some terrific numbers, being in the top 1% and 2% for Marbling and REA and top 10% or better for WW, YW, Calving Ease and Carcass Weight, Stay and HPG. Lana 60'11 has a Montana heifer in the replacement pen.

PERF	AOD	BW	205D	365D	2015 EPDs	BW	WW	YW	MILK
	3	66	663	1221		-2.0	64	102	20

LOT  
**64**

## Red Benchmark Momentum 25'14

Male BFR 25B March 03 2014 1777810



RED 3JG-MEW GRIDIRON 806U OSF  
Sire: **RED LSF MEW GAME CHANGER 1613Y OSF (1691731)**  
RED MEW ELIZABETH 710T OSF

RRED 5L TRAVLIN EXP 1892-6295 OSF MAF  
Dam: **RED FAYETTE OF BENCHMARK 993 OSF (1500243)**  
RED FAYETTE OF BENCHMARK 632

RED PIE GRIDMASTER 589 AMF OSF MAF  
RED LSF COVER GIRL LA414 P4046 OSF  
RED LSF CANYON CLASSIC 3037N OSF  
RED MS NSF MILLENIUM K145

RED 5L NORSEMAN EXPRESS  
5L SUNSHINE 699-1892 OSF  
RED SSS HIGH MARK 272D  
RED FAYETTE OF BENCHMARK 121

CARCASS EPDs	ACTUAL
MARB +0.69	% IMF 3.76
REA +0.43	REA 1.19
Fat +.000	Rib Fat 0.23
	LMY 64.4

It gets better. Lot 64 is in the top 1% for WW, YW, REA, Carcass Weight and Marbling. Wow! Note the dam here is a Fayette with Fayette 121, an Elite. The Fayette cow line produced Benchmark Better Beef, Grand Champion Denver 2013, who in turn sired Six Mile Kill Switch, Grand Champion, Denver 2015.

PERF	AOD	BW	205D	365D	2015 EPDs	BW	WW	YW	MILK
	5	85	644	1277		+0.5	74	116	11

LOT  
**65**

## Red Benchmark Momentum 34'14

Male BFR 34B March 6 2014 1777823



RED 3JG-MEW GRIDIRON 806U OSF  
Sire: **RED LSF MEW GAME CHANGER 1613Y OSF (1691731)**  
RED MEW ELIZABETH 710T OSF

RED LJC MISSION STATEMENT P27 OSF MAF  
Dam: **RED BENCHMARK SUNFLOWER 22'11 (1618199)**  
RED BENCHMARK SUNFLOWER 8118

RED PIE GRIDMASTER 589 AMF OSF MAF  
RED LSF COVER GIRL LA414 P4046 OSF  
RED LSF CANYON CLASSIC 3037N OSF  
RED MS NSF MILLENIUM K145

RED LJC LANCER 806 OSF  
RED LJC HANNAH 106 OSF  
RED CHAMPLAIN SERENADE 2513P OSF MAF  
RED MEADOW CK MDRY ABEL 30L

CARCASS EPDs	ACTUAL
MARB +0.60	% IMF 5.92
REA +0.63	REA 1.06
Fat +.000	Rib Fat 0.27
	LMY 61.9

This guy is a twin. He shows top 1% for WW, YW, REA, CW and HPG and top 2% for Marbling. Pretty impressive.

PERF	AOD	BW	205D	365D	2015 EPDs	BW	WW	YW	MILK
	3	78	690	1282		+1.8	79	129	16

# Bulls Sired by LSF MEW Game Changer 1613Y

LOT  
**66**

## Red Benchmark Momentum 43'14

Male BFR 43B March 8 2014 1777828



RED 3JG-MEW GRIDIRON 806U OSF  
Sire: **RED LSF MEW GAME CHANGER 1613Y OSF (1691731)**  
RED MEW ELIZABETH 710T OSF

RED 5L TRAVLIN EXP 1892-6295 OSF MAF  
Dam: **RED BENCHMARK DURUBA 010 (1563881)**  
RED BENCHMARK DURUBA 5102

RED PIE GRIDMASTER 589 AMF OSF MAF  
RED LSF COVER GIRL LA414 P4046 OSF  
RED LSF CANYON CLASSIC 3037N OSF  
RED MS NSF MILLENIUM K145

RED 5L NORSEMAN EXPRESS  
5L SUNSHINE 699-1892 OSF  
RED TED GLACIER MARIAS 103N OSF  
RED DURUBA BENCHMARK 314

CARCASS EPDs	ACTUAL
MARB +0.83	% IMF 3.67
REA +0.51	REA 1.10
Fat +0.30	Rib Fat 0.23
	LMY 63.2

Game Changer lives up to his name. This son is in the top 1% for WW, YW, REA, Carcass Weight and Marbling. Don't you want to be using bulls that rank at the top of the breed? Duruba 010 has two daughters retained.

PERF	AOD	BW	205D	365D	2015 EPDs	BW	WW	YW	MILK
	4	101	753	1248		+2.6	82	129	13

LOT  
**67**

## Red Benchmark Momentum 50'14

Male BFR 50B March 13 2014 1777837



RED 3JG-MEW GRIDIRON 806U OSF  
Sire: **RED LSF MEW GAME CHANGER 1613Y OSF (1691731)**  
RED MEW ELIZABETH 710T OSF

RED BFCK CHEROKEE CNYN 4912 OSF MAF  
Dam: **RED BENCHMARK LAKIMA 011 (1563883)**  
RED BENCHMARK LAKIMA 674

RED PIE GRIDMASTER 589 AMF OSF MAF  
RED LSF COVER GIRL LA414 P4046 OSF  
RED LSF CANYON CLASSIC 3037N OSF  
RED MS NSF MILLENIUM K145

RED BUF CRK CHF 824-1658 OSC MAF  
RED MRM 1431 8611 9109 OSF  
RED TED GLACIER MARIAS 103N OSF  
RED LAZY MC LAKIMA 11F

CARCASS EPDs	ACTUAL
MARB +0.69	% IMF 3.63
REA +0.55	REA 1.27
Fat +0.10	Rib Fat 0.25
	LMY 64.2

Lakima 011 has a daughter retained and a son at C.O. Johnson Ranching. Her grand dam 11F served as a donor and is Elite. Lot 67 is in the top 1% for WW, YW, REA, Carcass Weight and Marbling. Note the 205 D weight on these last two lots!

PERF	AOD	BW	205D	365D	2015 EPDs	BW	WW	YW	MILK
	4	103	723	1258		+3.3	78	119	12

LOT  
**68**

## Red Benchmark Momentum 56'14

Male BFR 56B March 15 2014 1777840



RED 3JG-MEW GRIDIRON 806U OSF  
Sire: **RED LSF MEW GAME CHANGER 1613Y OSF (1691731)**  
RED MEW ELIZABETH 710T OSF

RED BASIN EXT 45T5 AMF NHF OSF MAF  
Dam: **RED BENCHMARK LAKOTA 912 NHF (1500169)**  
RED BENCHMARK LAKOTA 755

RED PIE GRIDMASTER 589 AMF OSF MAF  
RED LSF COVER GIRL LA414 P4046 OSF  
RED LSF CANYON CLASSIC 3037N OSF  
RED MS NSF MILLENIUM K145

RED BASIN EXT 5233 OSF MAF  
BASIN ROSE 710P DMF AMF NHF OSF  
RED LAZY MC PRECISION 20N NHF  
RED TVB LAKOTA LEE 112L

CARCASS EPDs	ACTUAL
MARB +0.77	% IMF 5.51
REA +0.28	REA 1.06
Fat +0.000	Rib Fat 0.24
	LMY 62.1

Two maternal sisters are retained. Remember, the dam of Lot 68 is a paternal sister to Better Beef, the Denver Grand Champion, who in turn sired the 2015 Denver Grand champion for Six Mile and Randy Tetzlaf. Congratulations! This lot has a top 1% ranking for WW, YW, Carcass Weight and Marbling and top 4% for REA.

PERF	AOD	BW	205D	365D	2015 EPDs	BW	WW	YW	MILK
	5	96	708	1197		+2.8	76	116	16

# Bulls Sired by Red LSF MEW Game Changer 1613Y

LOT  
**69**

## Red Benchmark Momentum 58'14

Male BFR 58B March 16 2014 1777843



CARCASS EPDs	ACTUAL
MARB +0.57	% IMF 4.75
REA +0.54	REA 1.14
Fat +.010	Rib Fat 0.25
	LMY 62.8

RED 3JG-MEW GRIDIRON 806U OSF  
Sire: **RED LSF MEW GAME CHANGER 1613Y OSF (1691731)**  
RED MEW ELIZABETH 710T OSF

RED PIE GRIDMASTER 589 AMF OSF MAF  
RED LSF COVER GIRL LA414 P4046 OSF  
RED LSF CANYON CLASSIC 3037N OSF  
RED MS NSF MILLENNIUM K145

RED 5L TRAVLIN EXP 1892-6295 OSF MAF  
Dam: **RED BENCHMARK COCOA 11'11 (1618187)**  
RED MISS COCOA BENCHMARK 956

RED 5L NORSEMAN EXPRESS  
5L SUNSHINE 699-1892 OSF  
RED BASIN EXT 45T5 AMF NHF OSF MAF  
RED MISS COCOA BENCHMARK 324

PERF	AOD	BW	205D	365D	2015 EPDs	BW	WW	YW	MILK
	3	85	703	1273		+3	75	121	17

Cocoa 11'11 had our second high selling red bull to Ric Arthurs in sale XVIII. She carries our breeding program with 5L Travelin Exp, Basin EXT and further back, Get-A-Long Kayak and Moose Creek Slick. She has done it again with Lot 69 ranking in the top 1% for WW, YW, REA and Carcass Weight with Marbling at 2%.



LOT  
**70**

## Red Benchmark Momentum 68'14

Male BFR 68B March 20 2014 1777850



CARCASS EPDs	ACTUAL
MARB +0.64	% IMF 5.18
REA +0.60	REA 1.14
Fat +.010	Rib Fat 0.22
	LMY 62.4

RED 3JG-MEW GRIDIRON 806U OSF  
Sire: **RED LSF MEW GAME CHANGER 1613Y OSF (1691731)**  
RED MEW ELIZABETH 710T OSF

RED PIE GRIDMASTER 589 AMF OSF MAF  
RED LSF COVER GIRL LA414 P4046 OSF  
RED LSF CANYON CLASSIC 3037N OSF  
RED MS NSF MILLENNIUM K145

RED BENCHMARK GRAND CANYON 816  
Dam: **RED BENCHMARK FAYETTE 45'11 OSF (1618218)**  
RED FAYETTE OF BENCHMARK 424 OSC

RED BFCK CHEROKEE CNYN 4912 OSF MAF  
RED RIR REBELLO 35L  
RED COMPASS DIVIDEND 467M  
RED FAYETTE OF BENCHMARK 262

PERF	AOD	BW	205D	365D	2015 EPDs	BW	WW	YW	MILK
	3	95	741	1132		+2.7	78	117	14

Take a look here. The dam is a maternal sister to Benchmark Better Beef, the Denver Grand Champion 2013 who in turn sired the Denver Champion in 2015. Both Fayette 424 and 262 are Elite by Association standards. Great 205 D weight on this guy and he ranks in the top 1% for WW, YW, REA, Carcass Weight and Marbling.

LOT  
**71**

## Red Benchmark Momentum 75'14

Male BFR 75B March 22 2014 1777858



CARCASS EPDs	ACTUAL
MARB +0.64	% IMF 4.01
REA +0.53	REA 1.17
Fat -.020	Rib Fat 0.23
	LMY 63.7

RED 3JG-MEW GRIDIRON 806U OSF  
Sire: **RED LSF MEW GAME CHANGER 1613Y OSF (1691731)**  
RED MEW ELIZABETH 710T OSF

RED PIE GRIDMASTER 589 AMF OSF MAF  
RED LSF COVER GIRL LA414 P4046 OSF  
RED LSF CANYON CLASSIC 3037N OSF  
RED MS NSF MILLENNIUM K145

RED PRECISION OF BENCHMARK 776 NHF OSF  
Dam: **RED BENCHMARK ANNIE 982 NHF (1500233)**  
RED JALORMI MARIAS ANNIE 9K

RED LAZY MC PRECISION 20N NHF  
RED FAYETTE OF BENCHMARK 121  
RED GLACIER MARIAS 548 OSF MAF  
RED BRAMBLEBROOK ANNIE 2

PERF	AOD	BW	205D	365D	2015 EPDs	BW	WW	YW	MILK
	5	90	763	1246		+2.5	77	114	15

David Schapansky owns a maternal brother and if you need a building built in short order, be sure to contact David. He built our sale barn. Another top ranking bull being in the top 1% for WW, YW, REA, Carcass Weight and Marbling.

LOT  
**72**

## Red Benchmark Momentum 78'14

Male BFR 78B March 23 2014 1777860



CARCASS EPDs	ACTUAL
MARB +0.89	% IMF 5.14
REA +0.52	REA 1.17
Fat +.020	Rib Fat 0.33
	LMY 61.8

RED 3JG-MEW GRIDIRON 806U OSF  
Sire: **RED LSF MEW GAME CHANGER 1613Y OSF (1691731)**  
RED MEW ELIZABETH 710T OSF

RED PIE GRIDMASTER 589 AMF OSF MAF  
RED LSF COVER GIRL LA414 P4046 OSF  
RED LSF CANYON CLASSIC 3037N OSF  
RED MS NSF MILLENNIUM K145

RED BASIN EXT 45T5 AMF NHF OSF MAF  
Dam: **RED BENCHMARK DYNADEXAN 20'11 (1618197)**  
RED DYNA DEXAN BENCHMARK 514

RED BASIN EXT 5233 OSF MAF  
BASIN ROSE 710P DMF AMF NHF OSF  
RED TED GLACIER MARIAS 103N OSF  
RED DYNA DEXAN OF BENCHMARK 115

PERF	AOD	BW	205D	365D	2015 EPDs	BW	WW	YW	MILK
	3	102	782	1392		+3.1	85	134	14

A full brother is at Ewelme. Lot 72 carries the highest EPDs of the Game Changer's in the sale. His calves on average will be 36 lbs. heavier at weaning and 59 lbs. heavier at a year and when harvested the carcass will average 40 lbs. heavier than calves from the average Red Angus bull. 78B ranks in the top 1% for WW, YW, CW, REA and Marbling.



# Reference Sire

## Red LSF RAB Commitment 2792Z

### 10 Sons Sell

Avg. BW: 78 lbs Avg. 205 D: 680 lbs. Avg. 365 D: 1150 lbs



#### Genomic Enhanced EPDs

BW  
-6.0

WW  
+58

YW  
+93

Milk  
+26

MARB  
+1.52

REA  
+0.23

Fat  
+0.026

Owned by Orion Beef Group , R A Brown Ranch and Benchmark Angus

PERF	AOD	BW	205D	365D
	3	70	605	1158



RED LJC LANCER 806  
Sire: **RED BROWN COMMITMENT S7206**  
RED LJC LANCER 806

RED BECKTON LANCER T A664  
RED LJC HB LIZZIE 606 3  
RED BROWN SHAZZAM M6270  
RED BROWN MS MARIAS L7740

RED BIEBER MAKIN HAY 9913  
Dam: **RED BROWN MS MAKIN HAY W7901**  
RED BROWN C-MS ABIGRACE VP7502

RED BIEBER MAKE MIMI 7249  
RED BIEBER ADELLE 8958  
RED BROWN VACATION H7106  
RED BROWN MS ABIGRACE L7730

We lost Lorenzen Commitment to injury in 2012. He left us some very well accepted cattle with sons selling to Taylor's, Crystal Creek, Barbero's, Finstad's to name a few. Commitment left us with some very useful females as well. So when we came across another Commitment S7206 son at Ludvigson's spring 2013 sale, we were all over him. 2792Z carries an unbelievable lineage tracing to the living legend Brown Abigrace L7730.

She had 108 progeny sell in the Brown dispersal and she is the first Red Angus female to produce over \$1 million in progeny sales. His sire S7206 sires more marbling than any bull in the breed. 2792Z scanned a % IMF of 5.65, ratioing 126, and his marbling EPD ranks in the top 1% as does his BW and Milk EPD. He ranks in the top 8% for REA and the top 15% for WW & YW. Top notch rankings on Commitment 2792Z.

# Bulls Sired by Red LSF RAB Commitment 2792Z

LOT         
**73**

## Benchmark Committed 11'14

Male BFR 11B February 26 2014 1777801



RED BROWN COMMITMENT S7206 OSF MAF  
Sire: **RED LSF RAB COMMITMENT 2792Z** (1755392)  
RED BROWN MS MAKIN HAY W7901

RED 5L NORSEMAN KING 2291 OSF MAF  
Dam: **RED BENCHMARK PRINCESS 17'12** (1697726)  
RED CROWFOOT PRINCESS 8126H

RED LIC LANCER 806 OSF  
RED BROWN MS SHAZZAM P7940 OSF  
RED BIEBER MAKIN HAY 9913 OSF MAF  
RED BROWN C-MS ABIGRACE VP7502

RED VGW KING OF THE WEST OSF MAF  
RED NORSEMAN 1312 PJM  
RED CR HEAVENLY 11F  
RED CROWFOOT PRINCESS 647F

CARCASS EPDs	ACTUAL
MARB +0.93	% IMF 4.53
REA +0.18	REA 1.11
Fat +0.020	Rib Fat 0.30
	LMY 61.2

A heifer bull in Lot 73 from an own daughter of Norseman King, from the Elite Princess 8126H. This guy ranks in the top 1% for Marbling and Milk and the top 10% or better for BW, Calving Ease and REA.

PERF	AOD	BW	205D	365D	2015 EPDs	BW	WW	YW	MILK
	2	72	733	1239		-4.8	48	74	26

LOT         
**74**

## Benchmark Committed 16'14

Male BFR 16B March 01 2014 1777806



RED BROWN COMMITMENT S7206 OSF MAF  
Sire: **RED LSF RAB COMMITMENT 2792Z** (1755392)  
RED BROWN MS MAKIN HAY W7901

RED BADLANDS NET WORTH 23U OSF MAF  
Dam: **RED BENCHMARK FAYETTE 1'12** (1671928)  
RED BENCHMARK FAYETTE 017 OSF

RED LIC LANCER 806 OSF  
RED BROWN MS SHAZZAM P7940 OSF  
RED BIEBER MAKIN HAY 9913 OSF MAF  
RED BROWN C-MS ABIGRACE VP7502

PFFR SHAQ 607 OSF  
RED BADLANDS MEDORA 406 OSF  
RED 5L TRAVLIN EXP 1892-6295 OSF MAF  
RED FAYETTE OF BENCHMARK 610 OSC

CARCASS EPDs	ACTUAL
MARB +0.72	% IMF 3.32
REA +0.26	REA 1.12
Fat +0.030	Rib Fat 0.24
	LMY 61.7

Another heifer bull from a two year old Fayette dam. Ranking in the top 1% for Marbling and top 15% or better for BW, Calving Ease, Milk and REA.

PERF	AOD	BW	205D	365D	2015 EPDs	BW	WW	YW	MILK
	2	65	639	1129		-3.6	54	85	22

LOT         
**75**

## Benchmark Committed 26'14

Male BFR 26B March 4 2014 1777816



RED BROWN COMMITMENT S7206 OSF MAF  
Sire: **RED LSF RAB COMMITMENT 2792Z** (1755392)  
RED BROWN MS MAKIN HAY W7901

RED BADLANDS NET WORTH 23U OSF MAF  
Dam: **RED BENCHMARK LAKIMA 3'12** (1671929)  
RED BENCHMARK LAKIMA 011

RED LIC LANCER 806 OSF  
RED BROWN MS SHAZZAM P7940 OSF  
RED BIEBER MAKIN HAY 9913 OSF MAF  
RED BROWN C-MS ABIGRACE VP7502

PFFR SHAQ 607 OSF  
RED BADLANDS MEDORA 406 OSF  
RED BFCK CHEROKEE CNYN 4912 OSF MAF  
RED BENCHMARK LAKIMA 674

CARCASS EPDs	ACTUAL
MARB +0.78	% IMF 4.58
REA +0.23	REA 1.24
Fat +0.010	Rib Fat 0.19
	LMY 64.3

Three-quarter brother to previous lot tracing to the donor Lakima 11F. This guy ranks in the top 1% for Marbling, top 7% for BW, top 8% for REA and top 10% for Milk.

PERF	AOD	BW	205D	365D	2015 EPDs	BW	WW	YW	MILK
	2	66	671	1166		-3.7	54	83	22



# Bulls Sired by Red LSF RAB Commitment 2792Z

LOT  
**76**

## Benchmark Committed 28'14

Male BFR 28B March 4 2014 1777815



CARCASS EPDs	ACTUAL
MARB +0.99	% IMF 6.37
REA +0.26	REA 0.98
Fat +0.010	Rib Fat 0.18
	LMY 62.1

RED BROWN COMMITMENT S7206 OSF MAF  
Sire: **RED LSF RAB COMMITMENT 2792Z (1755392)**  
RED BROWN MS MAKIN HAY W7901

RED LJC LANCER 806 OSF  
RED BROWN MS SHAZZAM P7940 OSF  
RED BIEBER MAKIN HAY 9913 OSF MAF  
RED BROWN C-MS ABIGRACE VP7502

RED BADLANDS NET WORTH 23U OSF MAF  
Dam: **RED BENCHMARK FAYETTE 15'12 (1671941)**  
RED BENCHMARK FAYETTE 0102 OSF

PFFR SHAQ 607 OSF  
RED BADLANDS MEDORA 406 OSF  
RED BASIN EXT 45T5 AMF NHF OSF MAF  
RED FAYETTE OF BENCHMARK 121

PERF	AOD	BW	205D	365D	2015 EPDs	BW	WW	YW	MILK
	2	80	727	1110		-1.7	65	99	21

From a Net Worth two year old who is a Fayette and traces to Fayette 121, who is Elite. This guy has Marbling being in the top 1%, Growth being in the top 6% for WW and top 8% for YW and Muscle being in the top 6% for REA.

LOT  
**77**

## Benchmark Committed 29'14

Male BFR 29B March 05 2014 1777819



CARCASS EPDs	ACTUAL
MARB +1.07	% IMF 4.30
REA +0.35	REA 1.12
Fat +0.050	Rib Fat 0.31
	LMY 60.8

RED BROWN COMMITMENT S7206 OSF MAF  
Sire: **RED LSF RAB COMMITMENT 2792Z (1755392)**  
RED BROWN MS MAKIN HAY W7901

RED LJC LANCER 806 OSF  
RED BROWN MS SHAZZAM P7940 OSF  
RED BIEBER MAKIN HAY 9913 OSF MAF  
RED BROWN C-MS ABIGRACE VP7502

RED BASIN EXT 45T5 AMF NHF OSF MAF  
Dam: **RED BENCHMARK VIRGINIADOLL 050 (1563916)**  
RED VIRGINIADOLL BENCHMARK 353

RED BASIN EXT 5233 OSF MAF  
BASIN ROSE 710P DMF AMF NHF OSF  
RED LPC EMPEROR 42H OSF  
RED ROD SYSARAH 223L

PERF	AOD	BW	205D	365D	2015 EPDs	BW	WW	YW	MILK
	4	82	608	1181		-2.1	57	92	22

Great marbling EPD, ranking in the top 1%. He ranks in the top 2% for REA, top 8% for Calving Ease and top 10% for Milk. Note Montana and Emperor, a bull used extensively at Rodgers Red Angus. The dam has two daughters, retained one, the dam of Lot 78.

LOT  
**78**

## Benchmark Committed 33'14

Male BFR 33B March 05 2014 1777818



CARCASS EPDs	ACTUAL
MARB +0.98	% IMF 5.83
REA +0.20	REA 1.06
Fat +0.060	Rib Fat 0.27
	LMY 60.1

RED BROWN COMMITMENT S7206 OSF MAF  
Sire: **RED LSF RAB COMMITMENT 2792Z (1755392)**  
RED BROWN MS MAKIN HAY W7901

RED LJC LANCER 806 OSF  
RED BROWN MS SHAZZAM P7940 OSF  
RED BIEBER MAKIN HAY 9913 OSF MAF  
RED BROWN C-MS ABIGRACE VP7502

RED LCHMAN COPPER ROB 1204D OSF  
Dam: **RED BENCHMARK VIRGINIADOLL13'12 (1671939)**  
RED BENCHMARK VIRGINIADOLL 050

RED LMAN KING ROB 8621 OSF MAF  
COPPER LASS 2392  
RED BASIN EXT 45T5 AMF NHF OSF MAF  
RED VIRGINIADOLL BENCHMARK 353

PERF	AOD	BW	205D	365D	2015 EPDs	BW	WW	YW	MILK
	2	79	674	1088		-3.8	51	84	27

Really like these Copper Rob daughters. They are the right kind for sure. Lot 78 ranks in the top 1% for Marbling and Milk, top 5% for Calving Ease, top 7% for BW and top 10% for REA. Heifer bull here.

LOT  
**79**

## Benchmark Committed 48'14

Male BFR 48B March 11 2014 1777834



CARCASS EPDs	ACTUAL
MARB +0.86	% IMF 4.01
REA +0.15	REA 1.14
Fat +0.050	Rib Fat 0.30
	LMY 59.9

RED BROWN COMMITMENT S7206 OSF MAF  
Sire: **RED LSF RAB COMMITMENT 2792Z (1755392)**  
RED BROWN MS MAKIN HAY W7901

RED LJC LANCER 806 OSF  
RED BROWN MS SHAZZAM P7940 OSF  
RED BIEBER MAKIN HAY 9913 OSF MAF  
RED BROWN C-MS ABIGRACE VP7502

RED LCHMAN COPPER ROB 1204D OSF  
Dam: **RED BENCHMARK CHETA 1'12 (1671928)**  
RED BENCHMARK CHETA 028

RED LMAN KING ROB 8621 OSF MAF  
COPPER LASS 2392  
RED BASIN EXT 45T5 AMF NHF OSF MAF  
RED EMILY OF BENCHMARK 317

PERF	AOD	BW	205D	365D	2015 EPDs	BW	WW	YW	MILK
	2	72	691	1103		-4.7	47	80	27

Seven-Eighths brother to Lot 78 with a shot of Montana which sure doesn't hurt. The dam traces to Emily 13F, one of our first Red Angus acquisitions from Ken Stadlwisser. Committed 48'14 ranks in the top 1% for Marbling and Milk, top 3% for BW and Calving Ease and top 15% for REA. Heifer bull in Lot 79.



# Bulls Sired by Red LSF RAB Commitment 2792Z

LOT **80**

## Benchmark Committed 59'14

Male BFR 59B March 17 2014 1777844



CARCASS EPDs	ACTUAL
MARB +0.84	% IMF 4.26
REA +0.15	REA 1.17
Fat +0.010	Rib Fat 0.21
	LMY 62.7

RED BROWN COMMITMENT S7206 OSF MAF  
Sire: **RED LSF RAB COMMITMENT 2792Z (1755392)**  
RED BROWN MS MAKIN HAY W7901

RED LJC LANCER 806 OSF  
RED BROWN MS SHAZZAM P7940 OSF  
RED BIEBER MAKIN HAY 9913 OSF MAF  
RED BROWN C-MS ABIGRACE VP7502

RED BADLANDS NET WORTH 23U OSF MAF  
Dam: **RED BENCHMARK FAYETTE 14'12 OSF (1671942)**  
RED BENCHMARK FAYETTE 021 OSC

PFFR SHAQ 607 OSF  
RED BADLANDS MEDORA 406 OSF  
RED TED GLACIER MARIAS 103N OSF  
RED FAYETTE OF BENCHMARK 820 OSC

PERF	AOD	BW	205D	365D	2015 EPDs	BW	WW	YW	MILK
	2	83	653	1148		-1.6	60	92	19

From the Fayette cow family, the producers of the Denver Champion. Net Worth, a Brylor bull, adds some frame and growth. 59'14 ranks in the top 1% for Marbling and in the top 15% or better for WW, YW and REA.

LOT **81**

## Benchmark Committed 83'14

Male BFR 83B March 27 2014 1777819



CARCASS EPDs	ACTUAL
MARB +1.12	% IMF 5.07
REA +0.18	REA 1.18
Fat +0.040	Rib Fat 0.32
	LMY 60.0

RED BROWN COMMITMENT S7206 OSF MAF  
Sire: **RED LSF RAB COMMITMENT 2792Z (1755392)**  
RED BROWN MS MAKIN HAY W7901

RED LJC LANCER 806 OSF  
RED BROWN MS SHAZZAM P7940 OSF  
RED BIEBER MAKIN HAY 9913 OSF MAF  
RED BROWN C-MS ABIGRACE VP7502

RED BASIN EXT 45T5 AMF NHF OSF MAF  
Dam: **RED BENCHMARK DURUBA 71'12 (1671985)**  
RED BENCHMARK DURUBA 96

RED BASIN EXT 5233 OSF MAF  
BASIN ROSE 710P DMF AMF NHF OSF  
RED 5L TRAVLIN EXP 1892-6295 OSF MAF  
RED BENCHMARK DURUBA 5102

PERF	AOD	BW	205D	365D	2015 EPDs	BW	WW	YW	MILK
	2	85	708	1185		-1.6	63	98	23

Of all Red Angus bulls on the Canadian Registry, 83'14 is the number 12 bull for Marbling. And note his sire is number one and Montana is number three. This guy ranks in the top 1% for Marbling and top 10% or better for WW, YW, Milk and REA. Very useful bull here.

LOT **82**

## Benchmark Committed 87'14

Male BFR 87B April 2 2014 1777869



CARCASS EPDs	ACTUAL
MARB +1.04	% IMF 4.73
REA +0.15	REA 1.17
Fat +0.030	Rib Fat 0.25
	LMY 61.8

RED BROWN COMMITMENT S7206 OSF MAF  
Sire: **RED LSF RAB COMMITMENT 2792Z (1755392)**  
RED BROWN MS MAKIN HAY W7901

RED LJC LANCER 806 OSF  
RED BROWN MS SHAZZAM P7940 OSF  
RED BIEBER MAKIN HAY 9913 OSF MAF  
RED BROWN C-MS ABIGRACE VP7502

RED BASIN EXT 45T5 AMF NHF OSF MAF  
Dam: **RED BENCHMARK MAID 045 (1563913)**  
RED MAID OF BENCHMARK 373

RED BASIN EXT 5233 OSF MAF  
BASIN ROSE 710P DMF AMF NHF OSF  
RED BASIN SENSATION 702E OSF  
RED BENCHMARK MAID 18'95

PERF	AOD	BW	205D	365D	2015 EPDs	BW	WW	YW	MILK
	4	95	700	1155		-2.3	57	91	18

Terrific Marbling EPD on this son of a paternal sister to Better Beef, the Denver Champion 2013. Lot 83 ranks in the top 1% for Marbling and in the top 20% or better for BW, WW, YW and REA.



### DEPENDABLE IS WHAT WE DO.

We have over 35 locations across the Canadian Prairies. Visit us today or at [ROCKYMTN.COM](http://ROCKYMTN.COM).



TEL: 1-855-763-1427

**CASE IH**  
AGRICULTURE

# Reference Sire

## Red Basin EXT 45T5

7 Sons Sell

Avg. VW: 84 lbs Avg. 205 D: 675 lbs. Avg. 365 D: 1168lbs



Owned with Doug Stevenson and Towaw Cattle Co.

### Genomic Enhanced EPDs

BW  
+1.3

WW  
+77

YW  
+122

Milk  
+21

MARB  
+ 1.34

REA  
+ 0.57

Fat  
0.010

PERF	AOD	BW	205D	365D
	3	87	743	1331



Sire: RED BASIN EXT 1925 OSF  
**RED BASIN EXT5233 RA1051861 MAF OSF**  
 RED BASIN PRIMROSE 2043 OSF

BASIN EXT J695 OSF (RC)  
 RED BASIN LAKOTA J333  
 RED BFCKCHEROKEE CNYN 4912 OSF MAF  
 RED BASIN PRIMROSE 0854

Dam: C A FUTURE DIRECTION 5321 CAF NHCAMC  
**BASIN ROSE 710P RA1006811 AMF NHF (RC)**  
 RED BASIN ROSE F521 OSF

G A R PRECISION 1680 NHC AMC  
 C A MISS POWER FIX 308 AMF  
 RED LMAN NONE BETTER 9604 OSF MAF  
 RED BASIN PRIMROSE 258



**BENCHMARK BETTER BEEF**  
**GRAND CHAMPION BULL AT DENVER 2013**

Last year I said, "Red Basin EXT 45T5, alias, Montana, just gets better every day." Well it doesn't get any better than siring the Denver National Western Grand Champion Bull in 2013!! He does keep getting better every day. His enhanced EPD's via Pfizer 50K HD has him at the top of the list being in the top 1% for WW, YW, total maternal, carcass weight, marbling, heifer pregnancy, milk, maternal calving ease, REA and top 2% for calving ease. Is there a bull that comes close? We don't think so.

Montana carries an enviable pedigree tracing to the black legend N Bar Emulation EXT, Red Basin Sensation, Cherokee Canyon 4912, Glacier Logan with a shot of Scotch Cap, Traveler 23-4 and Rain-

maker 340. The dam of Montana is an own daughter of the carcass giant Future Direction and traces to such greats as None Better 9604, Rainmaker 340, Power Play, Sayre Patriot and Willabar Gay Gordon 67A. How could it be any better?

Montana himself had ratios of 111 for WW, 113 for YW, 110 for %IMF and 105 for REA. Montana is tested AMF, NHF AND OSF.

But the "proof is in the pudding." He continually sires calves that are very, very desirable from all aspects of the cattle business. His calves come easy, they grow extremely well, and when scanned for carcass attributes they come out on top. If you want them easy to look at, well having a Grand Champion son at the Denver National Western

speaks for itself. As well daughters of his son Benchmark Better Beef, were junior and intermediate Heifer Calf Champion at Agribition fall 2013 and a son of Better Beef was Grand Champion at Denver 2015. His daughters in production will soon be the backbone of our Red Angus herd having beautiful udders and being great mothers.

We thank Six Mile Red Angus for their purchase of Benchmark Better Beef in our 2011 Sale and applaud them on their care and nurturing of Benchie", as they call him, to be the Champion he is.

Take a good look at these Montana sons and grandsons, just could be a "Better Beef" among them.

# Bulls Sired by Red Basin EXT 45T5

LOT **83**

## Red Benchmark Montana 1'14

Male BFR 1B February 20 2014 1777794



RED BASIN EXT 5233 OSF MAF  
Sire: **RED BASIN EXT 45T5 AMF NHF OSF MAF (1429484)**  
BASIN ROSE 710P DMF AMF NHF OSF

RED 5L TRAVLIN EXP 1892-6295 OSF MAF  
Dam: **RED BENCHMARK BURGESS 020 (1563890)**  
RED BENCHMARK BURGESS 675

RED BASIN EXT 1925 OSF  
RED BASIN PRIMROSE 2043 DMF OSF  
C A FUTURE DIRECTION 5321 AMC CAF NHC DDF  
RED BASIN ROSE F521 OSF

RED 5L NORSEMAN EXPRESS  
5L SUNSHINE 699-1892 OSF  
RED LAZY MC PRECISION 20N NHF  
BENCHMARK BURGESS 207'97

CARCASS EPDs	ACTUAL
MARB +0.84	% IMF 2.89
REA +0.40	REA 1.15
Fat +0.000	Rib Fat 0.26
	LMY 61.9

PERF	AOD	BW	205D	365D	2015 EPDs	BW	WW	YW	MILK
	4	69	622	1093		-2.9	53	87	26

Basin EXT 45T5, known as 'Montana,' was lost in pasture the summer of 2013. He ranks as the #3 bull on the Canadian Registry for Marbling behind our Commitment bull and Expectation, a bull we use AI. Montana has left his mark. A son of Burgess 020 works at Rodgers Red Angus.

LOT **84**

## Red Benchmark Montana 3'14

Male BFR 3B February 23 2014 1777797



RED BASIN EXT 5233 OSF MAF  
Sire: **RED BASIN EXT 45T5 AMF NHF OSF MAF (1429484)**  
BASIN ROSE 710P DMF AMF NHF OSF

RED 5L TRAVLIN EXP 1892-6295 OSF MAF  
Dam: **RED BENCHMARK CHETA 048 (1563914)**  
RED BENCHMARK BURGESS 675

RED BASIN EXT 1925 OSF  
RED BASIN PRIMROSE 2043 DMF OSF  
C A FUTURE DIRECTION 5321 AMC CAF NHC DDF  
RED BASIN ROSE F521 OSF

RED 5L NORSEMAN EXPRESS  
5L SUNSHINE 699-1892 OSF  
RED GLACIER LOGAN OSF MAF  
RED CHETA OF BENCHMARK 459

CARCASS EPDs	ACTUAL
MARB +0.95	% IMF 4.84
REA +0.30	REA 0.98
Fat +0.010	Rib Fat 0.27
	LMY 60.7

PERF	AOD	BW	205D	365D	2015 EPDs	BW	WW	YW	MILK
	4	78	704	1153		-3.3	56	90	22

Top 1% for Calving Ease, Maternal Calving Ease and Marbling on this lot and in the top 4% for REA and top 20% or better for BW, WW, YW and Milk. Gets the job done. A daughter from Cheata 048 is retained and a full sister to 3'14 is at Scott Stockslagers in Ohio.

LOT **85**

## Red Benchmark Montana 32'14

Male BFR 32B March 5 2014 1777822



RED BASIN EXT 5233 OSF MAF  
Sire: **RED BASIN EXT 45T5 AMF NHF OSF MAF (1429484)**  
BASIN ROSE 710P DMF AMF NHF OSF

RED 5L TRAVLIN EXP 1892-6295 OSF MAF  
Dam: **RED BENCHMARK CARMELLA 933 (1500188)**  
RED GET-A-LONG CARMELLA 298

RED BASIN EXT 1925 OSF  
RED BASIN PRIMROSE 2043 DMF OSF  
C A FUTURE DIRECTION 5321 AMC CAF NHC DDF  
RED BASIN ROSE F521 OSF

RED 5L NORSEMAN EXPRESS  
5L SUNSHINE 699-1892 OSF  
RED BAKERS CENTURY  
GET-A-LONG CARMELLA 164

CARCASS EPDs	ACTUAL
MARB +0.75	% IMF 3.88
REA +0.32	REA 1.01
Fat +0.000	Rib Fat 0.33
	LMY 59.5

PERF	AOD	BW	205D	365D	2015 EPDs	BW	WW	YW	MILK
	5	90	644	1191		-1.7	56	90	21

A full sister to Lot 85 is at CT Ranches and a maternal sister is in the herd. 32'14 ranks in the top 20% or better for WW, YW, Milk, Calving Ease, Maternal Calving Ease, REA and Marbling with Marbling at 1% and REA at 3%.



# Bulls Sired by Red Basin EXT 45T5

## LOT 86 Red Benchmark Montana 42'14

Male BFR 42B March 8 2014 1777829



CARCASS EPDs	ACTUAL
MARB +073	% IMF 4.80
REA +0.34	REA 1.15
Fat +0.000	Rib Fat 0.34
	LMY 59.7

RED BASIN EXT 5233 OSF MAF  
**Sire:** RED BASIN EXT 45T5 AMF NHF OSF MAF (1429484)  
 BASIN ROSE 710P DMF AMF NHF OSF

RED BASIN EXT 1925 OSF  
 RED BASIN PRIMROSE 2043 DMF OSF  
 C A FUTURE DIRECTION 5321 AMC CAF NHC DDF  
 RED BASIN ROSE F521 OSF

RED BFCK CHEROKEE CNYN 4912 OSF MAF  
**Dam:** RED BENCHMARK LAKIMA 08 (1563879)  
 RED BENCHMARK LAKIMA 871

RED BUF CRK CHF 824-1658 OSC MAF  
 RED MRM 1431 8611 9109 OSF  
 RED 5L TRAVLIN EXP 1892-6295 OSF MAF  
 RED LAZY MC LAKIMA 11F

PERF	AOD	BW	205D	365D	2015 EPDs	BW	WW	YW	MILK
	4	88	678	1110		-0.4	61	95	22

Lakima 08 has a daughter in the herd and a full brother at Ric Arthurs'. Note Cherokee Cnyn 4912, the ABS Elite sire with over 10,000 sons and daughters. Also take note of the Elite donor Lakima 11F. Lot 86 is in the top 10% or better for WW, YW, Milk, Calving Ease, REA and Marbling with Marbling at 1% and REA 2%.

## LOT 87 Red Benchmark Montana 44'14

Male BFR 44B March 8 2014 1777830



CARCASS EPDs	ACTUAL
MARB +0.67	% IMF 3.43
REA +0.38	REA 1.00
Fat +0.000	Rib Fat 0.24
	LMY 61.8

RED BASIN EXT 5233 OSF MAF  
**Sire:** RED BASIN EXT 45T5 AMF NHF OSF MAF (1429484)  
 BASIN ROSE 710P DMF AMF NHF OSF

RED BASIN EXT 1925 OSF  
 RED BASIN PRIMROSE 2043 DMF OSF  
 C A FUTURE DIRECTION 5321 AMC CAF NHC DDF  
 RED BASIN ROSE F521 OSF

WK DATELINE 7270  
**Dam:** RED BENCHMARK DURUBA 07 (1563878)  
 RED DURUBA BENCHMARK 311

CONNELLY DATELINE DDF  
 GRUBBS MISS COUTNESS 185  
 RED GET-A-LONG KAYAK 024  
 RED DURUBA OF BENCHMARK 012

PERF	AOD	BW	205D	365D	2015 EPDs	BW	WW	YW	MILK
	4	83	663	1233		-1.5	57	94	18

Little different pedigree on this guy, with his dam being by a black Dateline son. He ranks in the top 1% for Marbling and Maternal Calving Ease, the top 2% for REA and Calving Ease and top 10% for YW.

## LOT 88 Red Benchmark Montana 49'14

Male BFR 49B March 11 2014 1777835



CARCASS EPDs	ACTUAL
MARB +0.72	% IMF 5.26
REA +0.36	REA 1.17
Fat +0.000	Rib Fat 0.20
	LMY 63.7

RED BASIN EXT 5233 OSF MAF  
**Sire:** RED BASIN EXT 45T5 AMF NHF OSF MAF (1429484)  
 BASIN ROSE 710P DMF AMF NHF OSF

RED BASIN EXT 1925 OSF  
 RED BASIN PRIMROSE 2043 DMF OSF  
 C A FUTURE DIRECTION 5321 AMC CAF NHC DDF  
 RED BASIN ROSE F521 OSF

RED TED GLACIER MARIAS 103N OSF  
**Dam:** RED CHEROKEE OF BENCHMARK 797 (1403766)  
 RED CHEROKEE OF BENCHMARK 929

RED GLACIER MARIAS 548 OSF MAF  
 RED TED KING 87G  
 RED MEM IMPACT 34E  
 RED SOUTHM CHEROKEE 19F

PERF	AOD	BW	205D	365D	2015 EPDs	BW	WW	YW	MILK
	7	92	678	1130		-0.1	62	95	16

A full brother is at Seven Persons Grazing, with maternal brothers at Sheldon Anderson's and G & J Farming with a full sister retained. Lot 89 ranks in the top 10% or better for WW, YW, REA and Marbling with Marbling and REA at 1% and 2%.

## LOT 89 Red Benchmark Montana 54'14

Male BFR 54B March 15 2014 1777838



CARCASS EPDs	ACTUAL
MARB +0.96	% IMF 4.24
REA +0.30	REA 1.15
Fat +0.000	Rib Fat 0.36
	LMY 60.1

RED BASIN EXT 5233 OSF MAF  
**Sire:** RED BASIN EXT 45T5 AMF NHF OSF MAF (1429484)  
 BASIN ROSE 710P DMF AMF NHF OSF

RED BASIN EXT 1925 OSF  
 RED BASIN PRIMROSE 2043 DMF OSF  
 C A FUTURE DIRECTION 5321 AMC CAF NHC DDF  
 RED BASIN ROSE F521 OSF

RED BADLANDS NET WORTH 23U OSF MAF  
**Dam:** RED BENCHMARK REBA 8'11 (1720221)  
 RED BENCHMARK REBA 8130

PFFR SHAQ 607 OSF  
 RED BADLANDS MEDORA 406 OSF  
 RED CHAMPLAIN SERENADE 2513P OSF MAF  
 RED DYNASTORM OF BENCHMARK

PERF	AOD	BW	205D	365D	2015 EPDs	BW	WW	YW	MILK
	3	89	736	1265		+0.7	70	110	19

Wanting growth, yet wanting the Red Angus carcass attributes, here you are. Top 1% for Marbling, top 2% for WW, YW, top 3% for Carcass Weight and top 4% for REA, and he is in the top 20% for Calving Ease.

## Other information...

**Canadian Elite Cow:** has a minimum of five calves, four of which must be registered, to determine her regularity of calving and ability to consistently produce calves with a superior weaning weight year after year, display early puberty, breeding and early calving, followed by regularity of calving and high performance offspring. The Canadian Angus Elite Cow Report identifies superior cows in the Canadian Angus herd book.

### Canadian Elite Cow Criteria:

1. The cow must be enrolled in the Canadian Angus Performance Program.
2. The cow must have a calf with a 205-day weight recorded with in the past 18 months.
3. The cow must have her first calf within 1000 days of her date of birth.
4. The cow must maintain a regular calving interval, calving within 395 days consecutively.
5. The cow must have four consecutive natural born

calves that are registered and have weaning weight ratio that averages over 105.

6. The cow's calf must be in a contemporary group with no less than 10 herd mates to determine the weaning weight ratio.
7. Once a cow is designated an Elite Cow, she is always an Elite Cow, however she will not be published in a year where she does not meet the above criteria.

### Time to sell your calves or yearling?

Do you sell your calves the same old way every year? Do you pay good money for bulls and heifers but fail to capitalize on your genetic investment? Let us help! Give us a call before you sell your calves or yearlings. Now more than ever before we can help generate a premium for your feeder cattle. We have buyers looking for Benchmark-sired cattle. Take advantage of the data, pedigree, EPD and ultrasound information provided on every bull selling and give us a call before you sell. **Buy a Benchmark Bull and we will bid on your calves!!!!**

### Premier Dam Criteria:

1. The cow must be enrolled in the Canadian Angus Performance Program.
2. The cow must have a calf with a 205-day weight recorded within the past 18 months
3. The cow must have her first calf within 1000 days of her date of birth.
4. The cow must maintain a regular calving interval, calving within 395 days consecutively.
5. The cow must have consecutive natural born calves that are registered.
6. The cow's four calves must have Weaning Weight EPDs that are above breed average and have an accuracy of over 25%.
7. The cow must have at least 2 registered grand calves.
8. Once a cow is designated a Premier Cow, she is always a Premier Cow, however she will not be published in a year where she does not meet the above criteria.

## Sale Terms & Conditions

### Terms:

The terms of the sale are cash or cheque payable at par to Balog Auction Services Ltd., Lethbridge, AB unless prior arrangements are made with the seller. The right of property shall not pass until full settlement is made. All arrangements and settlements must be made with the clerks of the sale before any cattle will be released.

### Bids

Every animal entering the sale ring will be sold to the highest bidder. A floor price will apply to each animal consigned.

### Disputes

In case of disputes, bidding will be reopened between the parties involved. If no further bid is made, the buyer will be the person from whom the auctioneer accepted the last bid. The auctioneer's decision in such matters will be final.

### Purchaser's Risk

Each animal becomes the risk of the purchaser as soon as sold.

### Announcements

Errors discovered in the catalogue will be corrected by announcements from the Auction Stand at sale time and such corrections will take precedence over the printed matter in the catalogue.

### Certificate of Registry

A certificate of registry duly transferred will be furnished to the buyer for each animal after settlement is made.



### Shipping

Assistance will be given in making shipment after the sale but no risk is assumed by Balog Auction Services Ltd., or the seller. Expenses incurred are the responsibility of the purchaser. Purchasers are requested to furnish shipping instructions when making settlement. Any additional expenses are the responsibility of the buyer, including duty, brokerage fees, etc.

### Breeder's Guarantee

Everything possible has been done to assure that every bull in this sale will be a breeder. Taber Veterinary Clinic semen tested, and physically evaluated every bull. However, should a problem arise, please inform the seller so further arrangements may be made.

### Accidents

Although every precaution will be taken to protect the safety and comfort of the buyers, neither the sales manager, auctioneer nor any owner assumes any responsibility in this matter and disclaims any liability, legal or otherwise, in the event of accident or loss of property.

### Liability

Balog Auction Services Ltd. are acting as agents only and assume no responsibility for representations made by the seller. Purchasers must look to the seller for fulfilment of all guarantees and representations made hereunder.

**Thank you!**

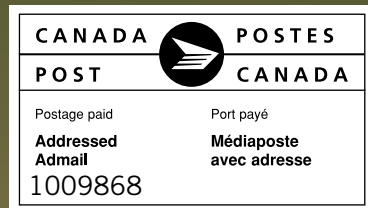
...to all who participated in the sale in any way. Your support is greatly appreciated. We wish you success with your purchases and remind you that we are here "for the long haul and if you have any questions or concerns, we are only a phone call away.



# Benchmark Farms

*Black and Red Angus Breeders*

Box 997, Lethbridge, AB  
T1J 4A2



*Makin' the Grade*



*Engineering Superior Beef*

[WWW.BENCHMARKANGUS.COM](http://WWW.BENCHMARKANGUS.COM)