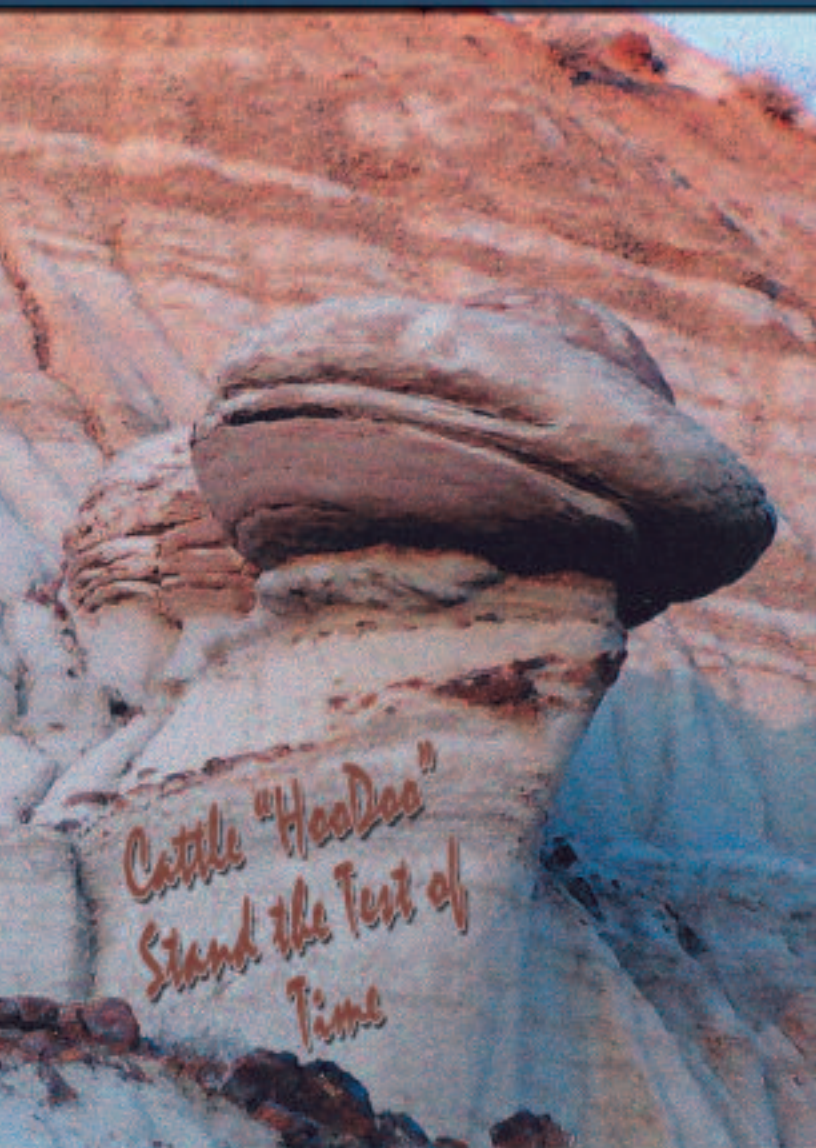


Bad Lands Angus
BAD LANDS ANGUS
Red & Black Angus Bull Sale



- 71 Black & Red Yearling Angus Bulls
- 31 Virgin Black & Red Two Year Old Bulls

1:00 pm Thursday

April 14 2011

@ Southern Alberta
Livestock Exchange

Fort Macleod, Alberta

with guest consignor Hoo Doo Angus

WELCOME TO THE BAD LANDS ANGUS BULL SALE!

WE STRONGLY BELIEVE THAT AGRICULTURE IS ROUNDING A CORNER AND IS HEADED TO A NEW PLATEAU. FOR THE FIRST TIME IN OUR HISTORY BOTH GRAIN AND LIVESTOCK PRODUCERS ARE FINALLY BEING REWARDED FOR THEIR EFFORTS. EVEN WITH THE CANADIAN DOLLAR OVER PAR, WE CONTINUE TO EXPERIENCE HIGHER GRAIN AND CATTLE PRICES THAN IN RECENT MEMORY. JUDGING BY THE SNOW IN OUR FIELDS, THERE SHOULD BE AN ABUNDANCE OF GRASS AND FEED FOR THE COMING YEAR.

IF YOU REMEMBER AT OUR SALE LAST SPRING, WE STATED THAT CALVES WOULD BE MODERATELY HIGHER IN THE FALL. IN THE END, WE DID SEE CALVES SELL FOR \$ 100 OR MORE OVER PREVIOUS YEARS. GRASS AND FEEDER CATTLE ARE NOW AT AN ALL TIME HIGH. IT LOOKS LIKE IT WILL TAKE OVER \$ 900 TO BUY A GRASSER THIS SPRING. MEANWHILE, FAT CATTLE ARE TRADING AT \$ 107 TO \$ 110 PER CWT. DURING THESE GOOD TIMES, IT'S IMPORTANT TO HAVE CATTLE THAT DELIVER A SOLID RETURN ON YOUR INVESTMENT. WE ARE PROUD OF OUR CATTLE IN THE RING TODAY. THIS STRONG GROUP OF YEARLING AND VIRGIN TWO-YEAR-OLD BULLS ORIGINATE FROM A HERD THAT HAS GENERATIONS STACKED WITH MODERATE BIRTH WEIGHTS, MATERNAL TRAITS AND GROWTH. WE ARE ON THE "TOTAL HERD REPORTING" PROGRAM WITH THE CANADIAN ANGUS ASSOCIATION SO YOU HAVE THE MOST ACCURATE INFORMATION AVAILABLE TO EVALUATE BULLS THAT WILL MEET YOUR NEEDS.

AS ALWAYS, YOUR SATISFACTION IS 100% GUARANTEED. THIS GUARANTEE IS BACKED UP BY A DEEP PEN OF SPARE BULLS PURPOSELY HELD BACK TO ENSURE YOU HAVE A BULL IF THE NEED ARISES.

WE APPRECIATE YOUR SUPPORT AND THANK YOU FOR TAKING TIME TO LOOK THROUGH OUR CATALOGUE AND PENS. WE BELIEVE IN THE BEEF INDUSTRY, APPRECIATE OUR VALUED CUSTOMERS AND THANK OUR MANY FRIENDS IN THE BUSINESS. INDEED, IT IS A GREAT TIME TO BE CATTLEMEN.

SEWALL BROTHERS



SEWALL CATTLE CO.

CHAD & SUE

H: 403-378-4475

C: 403-793-1726

F: 403-378-4475



SEWALL RANCHING CO.

DAN

H: 403-378-4653

C: 403-363-0632

PLEASE JOIN US...

...AFTER THE SALE FOR AN ANGUS STEAK (RICK IRWIN'S WELL KNOWN STEAK SUPPER!) AND A VISIT!



Steak duty....Rick, Dick, Randy Pierson and our sister, Janie

BAD LANDS ANGUS BULL SALE

THURSDAY • APRIL 14, 2011 • 1:00 P.M.

at Southern Alberta Livestock Exchange • Fort Macleod, AB

- SALE DAY PHONES -

AUCTION MART 403-553-3315

DAN'S CELL 403-363-0632

CHAD'S CELL 403-793-1726

GENE'S CELL 403-501-8067

ON OFFER:

- **71 BLACK & RED YEARLING BULLS**
- **31 VIRGIN BLACK & RED 2 YR OLD BULLS**

(Bulls that were too young for Sale last year; all born after April 8th. No Bulls Have Been Sold Prior to Sale)

AUCTIONEER:

BRANT HURLBURT - 403-330-8866

SALE STAFF - SOUTHERN ALBERTA LIVESTOCK EXCHANGE

JUSTIN KEELEY - PINCHER CREEK - 403-627-6534

DENNIS ERICSON - WETASKIWIN - 780-352-7630

ALLAN LIVELY - PINCHER CREEK - 430-627-7776

FRANK JENKINS - PINCHER CREEK - 403-627-6700

SIGHT UNSEEN:

IN THE EVENT YOU ARE UNABLE TO ATTEND THE SALE, BIDS CAN BE GIVEN TO SALES STAFF OR OWNERS WITH SATISFACTION GUARANTEED.

DELIVERY:

- **\$100.00 DISCOUNT** PER BULL IF TAKEN HOME SALE DAY.
- BULLS CAN BE SENT BACK TO SUNDIAL LIVESTOCK FEEDERS IN BASSANO (INSURED OR AT OWNERS RISK). BULLS TO BE PICKED UP BEFORE JUNE 1. PLEASE CALL CHRIS (403-633-0890) 24 HOURS AHEAD.
- BULLS WILL BE DELIVERED 300 MILES TO CENTRAL LOCATIONS AT NO CHARGE AND BEYOND AT COST. DELIVERY WILL BE ARRANGED AT THE CONVENIENCE OF SEWALL BROTHERS AND WILL BE DELIVERED AS SOON AS POSSIBLE AFTER THE SALE.

ACCOMMODATIONS:

RED COAT INN - FORT MACLEOD - 403-553-4434

DAYS INN - 100 3RD AVE. SOUTH, LETHBRIDGE - 403-327-6000

FOR MORE INFORMATION, PLEASE CONTACT:

SEWALL CATTLE CO.

CHAD & SUE
BOX 64, PATRICIA,
AB T0J 2K0
H: 403-378-4475
C: 403-793-1726
F: 403-378-4475

SEWALL RANCHING CO.

DAN SEWALL
BOX 149, PATRICIA,
AB T0J 2K0
H: 403-378-4653
C: 403-363-0632

Downloadable Catalogue Online in Full Color at:
www.coyotepub.com/badlandsangus

THANK YOU!!!

A BIG THANKS TO OUR CUSTOMERS OF 2010 AND TO PAST CUSTOMERS WHO DIDN'T REQUIRE A BULL LAST YEAR!!!!

OF BULLS PURCHASED

2010 BUYER

OVER THE YEARS

NEIL & GAIL ANDERSON	1*
RAND & NORMA BERG	16*
BIG COULEE RANCH	5*
BLOCKS RANCHING	50+*
CAN/AB RESEARCH	13*
CAROLSIDE RANCHING	4*
PETE & KELLY CONACHER	4*
COW CAMP RANCHES	22*
GLEN & BARB DUNBAR	1
EMELSON FARMS LTD.	1
EDITH EVANS	2*
PERCY EVANS	4*
EWELME COLONY	2
CHARLES FULLERTON	5*
G.W.K. FARMS LTD.	1
GRANUM COLONY	5*
H.D. RANCHING	1
HARBINSON RANCHES	19*
CURTIS HARBINSON	1
ALBERT & CAROLINE HENRICKSON	18*
WILL & SHAUNA HENRICKSON	4*
WARREN & JANET HENRY	3*
PAT HICKEY	1
TRAVIS HICKEY	1
LARRY & JORDY HUDEC	3*
RICK & LEE IRWIN	5*
TRENT & JANELLE LIEBREICH	1
LOST RIVER RANCHES	5*
M & H RANCH & FEEDLOT INC.	29*
STAN MCNAB	2
NORM & TAMMY MCNEIL	3*
HUGH & SUSAN MCPHERSON	8*
BILL & DIANE MIKULA	6*
G.W. MURRAY RANCHING	4*
DON & TRACY MUSGROVE	3*
NEELY AGRO	5*
NEWELL GRAZING	4*
NORTH SLOPE RANCHES	35+*
DARRELL OWEN	2
JEFF & TERRY OWEN	4*
BRUCE & CONNIE PIERSON	20*
RANDY & RITA PIERSON	16*
KATE & MARTIN PUCH	6*
ROCKIN CHAIR HOLDINGS	4*
RIBLONG RED ANGUS	3*
RIVERSIDE COLONY	11*
ANDREW SEKELLA	1
SNAKE LAKE RANCHES	1
SPEAR POINT CATTLE CO.	14*
STANDOFF COLONY	2*
RICHARD STEED	1
SUNDIAL LIVESTOCK FEEDERS	7*
THE HILLS BLACKSMITH	2*
KENT TORKELSON	1
LEON & CAROL TORKELSON	8*
WALPER RANCHES	4*
WELSCH RANCHING LTD.	8*
GORDON WUDRICH	3*
YU CATTLE CO. INC.	21*

HOO DOO ANGUS BUYERS

DERSCH RANCH	1
WILL & SHAUNA HENRICKSON	1
WARREN & JANET HENRY	3
CAM & LYNN MORRIS	2
JEFF & TERRY OWEN	2*

** DENOTES REPEAT CUSTOMERS*

OUR RECORDS FOR THE RED BULLS START AS OF 2008

SPECIAL THANKS TO...

- THE BUYER OF THE HIGH SELLING BLACK ANGUS BULL -



- H.D. RANCHING (VANESSA SPROULE ACCEPTING) -

- VOLUME BUYER - BLACK ANGUS BULLS -



- LEON TORKELSON (WIFE, CAROL, MISSING) -

- THE BUYER OF THE HIGH SELLING RED ANGUS BULL -



**- NEELY AGRO (JIM, SHERRY, LOGAN & RAE NEELY IN THE PICTURE
GEORGE, GAIL & COLE NEELY MISSING) -**

- VOLUME BUYER - RED ANGUS BULLS -



- WARREN HENRY (WIFE, JANET, MISSING) -

INFLUENTIAL FEMALES!



These dams can be found in the foundation of many of the pedigrees in this catalogue

SAV MISS BOBBIE
0305 - GRANDAM OF
INITIATIVE 52T

275M
DAM OF ALLIANCE 482T



CHAMPAGNE CHERRY BEE
DAM OF CORTACHY BOY

FULL SISTER TO RR
DAQUANTAE



DAM TO HERO

DAM TO ALLIANCE 187



DAM TO
AAR TREND

DAM TO
MTTY IN FOCUS



MORE INFLUENTIAL FEMALES!



These dams can be found in the foundation of many of the pedigrees in this catalogue

MB RACHEL 2173
DAM OF WIDESPREAD



N BAR PRIMROSE 2424
DAM OF EXT



HIGH VALLEY GLORIA 1Q2
DAM OF 4C6



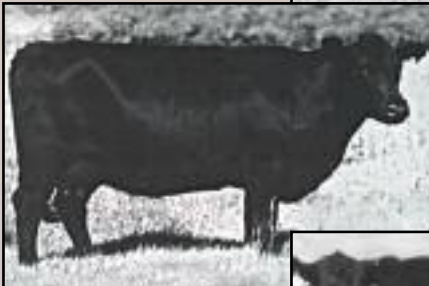
LCC SUNSET K3118
DAM OF NEW STANDARD



DIXIE ERICA OFCH 1019
DAM OF QUANTUM



LEACHMAN ERICA 0025
DAM OF RIGHT TIME



TINGE 23'92
DAM OF QUANTUM 066



SHOSHONE ESTER 3116
DAM OF ECLIPSE

BAD LANDS ANGUS "ELITE" DAMS

– THE "CANADIAN ELITE COW" CRITERIA –

1. THE COW MUST BE ENROLLED IN THE CANADIAN ANGUS PERFORMANCE PROGRAM.
2. THE COW MUST HAVE A CALF WITH A 205-DAY WEIGHT RECORDED WITHIN THE PAST 18 MONTHS.
3. THE COW'S FIRST CALF MUST BE BORN AND WEANED WITHIN 1,000 DAYS.
4. THE COW MUST MAINTAIN A REGULAR CALVING INTERVAL. REGULAR IS CONSIDERED TO BE 365 +/- 30 DAYS.
5. THE AVERAGE OF THE COW'S FIRST FOUR CALVES' WEANING WEIGHT RATIO (INDEX) MUST BE AT LEAST 105. IF SHE FAILS TO DO THIS WITH HER FIRST FOUR CALVES (IE. PRODUCES TWINS OR BECOMES DONOR DAM), SHE CAN QUALIFY LATER PROVIDING SHE HAS FOUR CALVES WITH AN AVERAGE PROGENY WEANING WEIGHT RATIO (INDEX) OF 105, AND SHE MEETS THE OTHER REQUIREMENTS.
6. ALL OF THE COW'S CALVES MUST BE IN CONTEMPORARY GROUPS WITH NO LESS THAN 10 HERD MATES TO DETERMINE THE WEANING WEIGHT RATIO.
7. THE COW'S PROGENY MUST BE Sired BY A REGISTERED ANGUS BULL.

THERE HAVE BEEN AS MANY AS 93 ELITE COWS IN THE BAD LANDS ANGUS HERD. WE CURRENTLY HAVE 50:

BAD LANDS ANNE 4015P
BAD LANDS BARBARA 82K
BAD LANDS BARBARA 243M
BAD LANDS BB BLOSSOM 4067P
BAD LANDS BLACKBIRD 33K
BAD LANDS BLACKBIRD 378N
BAD LANDS BLACKBIRD 4092P
BAD LANDS BLACKCAP 315N
BAD LANDS BLACKCAP 346N
BAD LANDS BLACKCAP 4042P
BAD LANDS BLACKCAP 5121R
BAD LANDS BLACK LASS 335N
BAD LANDS BLACK LASS 358N
BAD LANDS COUNTESS 0142
BAD LANDS COUNTESS 214M
BAD LANDS COUNTESS 350N
BAD LANDS COUNTESS 5032R
BAD LANDS ERICA 10K
BAD LANDS ERICA 60K
BAD LANDS ESTHER 17K
BAD LANDS HEDY 323N
BAD LANDS HYALITE HEDY 55K
BAD LANDS KYMA 388N
BAD LANDS LADY 26K
BAD LANDS LADY 311N
BAD LANDS LADY FANNY 57K
BAD LANDS LASSIE 161L
BAD LANDS LASSIE 305N
BAD LANDS LASSIE 312N
BAD LANDS LASSIE 313N
BAD LANDS LASSIE 5078R
BAD LANDS LASSIE 5124R
BAD LANDS LASSIE 964J
BAD LANDS PRIDE 5057R
BAD LANDS QUEEN 144L
BAD LANDS QUEEN 937J
BAD LANDS ROSETTE 5045R
BAD LANDS STETSON 260M
BAD LANDS STETSON 5053R
BAR LU DUCHESS 13'01
MJLC ANNIE K 37N
RED BRYLOR ZAMBA 75L
RED CROWFOOT SQUIRREL 1074L
RED SHODEREE CORISSA 47N
RED SHODEREE LEADING LADY 88N
RED SHODEREE LEADING LADY 96K
RED SHODEREE LINDY 50N
RED SHODEREE PRUDENCE 126N
RED SHODEREE QUINLA 28N
RED SHODEREE REGAL 193H

BAD LANDS ANGUS REFERENCE SIRES



A **KMK ALLIANCE 6595 187** MALE IMP 87J 1191922 FEBRUARY 1, 1999

SITZ TRAVELER 8180 AMF NHF CAF
SITZ ALLIANCE 6595 AMF NHF (1036949)
 SITZ BARBARAMERE JET 2698

N BAR EMULATION EXT 849773 AMF NHF CAF
GAR EXT 916 US12921677 AMF
 GAR BANDO 338 US11117490

2011	BW	WW	YW	Milk	TM	CE	MCE	%IMF	REA	FAT
EPD's	+1.9	+63	+106	+21	+53	+3	+9	-	+0.08	+0.062

POWERFUL MATERNAL GENETICS WITH CURVE-BENDER AND CARCASS APPEAL. ALLIANCE 187 IS MODERATE FRAMED, THICK AND EASY FLESHING WITH A PROVEN MATERNAL PEDIGREE. HE EXCEEDS HIS SIRE FOR BOTH CURVE-BENDER SPREAD AND MUSCLING.

THIS IS THE BULL WHO SIRED REFERENCE SIRES B & C.

B **REMINGTON ALLIANCE 482T**

MALE RCC 482T 1419171 JUNE 9, 2007
BW: 90 LBS ADJ 205D: 650 LBS ADJ 365D: 1503 LBS

SITZ ALLIANCE 6595 AMF NHF
KMK ALLIANCE 6595 187 AMF NHF CAF (1191922)
 GAR EXT 916 AMF

MINBURN ROGUE 37H
DRYLAND LADY BATE 275 (1140309)
 CRESCENT CREEK LADY BATE 44E

2011	BW	WW	YW	Milk	TM	CE	MCE	%IMF	REA	FAT
EPD's										

OUT OF AN AWESOME EMBRYO TRANSPLANT COW AND SIRED BY REFERENCE SIRE A, ALLIANCE 6595 187.



“ELITE” DAM OF ALLIANCE 44T - REF SIRE C (pg 8)

BAD LANDS ANGUS REFERENCE SIRES



HIGH VALLEY AMBUSH
MGS of Ref Sire C

C

BAD LANDS ALLIANCE 44T

MALE CDS 44T 1387816 MARCH 27, 2007

BW: 72 LBS ADJ 205D: 740 LBS ADJ 365D: 1264 LBS

SITZ ALLIANCE 6595 AMF NHF

KMK ALLIANCE 6595 187 AMF NHF CAF (1191922)

GAR EXT 916 AMF

HIGH VALLEY 4C6 AMBUSH AMF

BAD LANDS COUNTESS 214M AMF (1120996)

BAD LANDS COUNTESS 442D

2011	BW	WW	YW	Milk	TM	CE	MCE	%IMF	REA	FAT
EPD's	-1.1	+48	+85	+21	+45	+10	+11	-	-	-

HIGH SELLING BULL IN 2008 TO JACK BUNNEY. CALVING EASE WITH GROWTH AND THICKNESS OUT OF PROBABLY THE BEST COW ON THE PLACE. AWESOME TEMPERAMENT! FULL BROTHER TO HIGH SELLER IN 2010 TO H.D. RANCHING.

REFERENCE SIRE A IS THE SIRE OF 44T. DAM AND GRANDDAM ARE "ELITE DAMS".



Tom Boy 509R
Sire of Ref Sire D

D

LOOKOUT CANUCK 65U

MALE LSF 65U 1457403 FEBRUARY 15, 2008

BW: 93 LBS ADJ 205D: 749 LBS ADJ 365D: 1204 LBS

ADELPHI TOM BOY 20H

FIGURE 8 ANGUS TOM BOY 509R (1252270)

FIGURE 8 ANGUS LADY 604J

LOOKOUT PACESETTER 258M

LOOKOUT TRIM LASS 23R (1256730)

GEIS TRIM LASS 72'99

2011	BW	WW	YW	Milk	TM	CE	MCE	%IMF	REA	FAT
EPD's	+3	+39	+64	+16	+36	-2	+4	-	-	-

SIRE SOLD FOR \$60,000.00 1/3 INTEREST. DAM HAS LOTS OF POWER. SHE'S BARREL-CHESTED AND DEEP RIBBED.

BAD LANDS ANGUS REFERENCE SIRES



E WINDY WILLOWS KRUGERRAND 205T

MALE WW 205T 1412192 MARCH 28, 2007

BW: 92 LBS ADJ 205D: 668 LBS ADJ 365D: 1282 LBS

KRUGERRAND OF DONAMERE 490 AMF NHF
SOUTHERN KRUGERRAND 16H (948350)
 SOUTHERN TALL PRIDE 72W

YOUNG DALE HERCULES 810H
WWF HERCULES JENNIFER 142K (1011974)
 WWF INDEPENDENT JENNIFER 44W

2011	BW	WW	YW	Milk	TM	CE	MCE	%IMF	REA	FAT
EPD's	-0.7	+37	+67	+18	+37	+6	+6	-	-0.24	+0.005

HIGH SELLER IN WINDY WILLOWS 2008 BULL SALE. LARGER FRAMED BULL WITH GOOD MARBLING SCAN WITH LOTS OF MUSCLE AND CAPACITY.



F BAD LANDS DAQUANTAE 26L

MALE CDS 26L 1066872 MARCH 27, 2001

BW: 80 LBS ADJ 205D: 704 LBS ADJ 365D: 1136 LBS

D H D TRAVELER 6807
R R DAQUANTAE 789E
 BLACKCAP OF R R 5367

GLENRIO BANDOLIER 8X
BAD LANDS BLACKBIRD BLOSSOM
 BLACKBIRD BLOSSOM BRAZEAU 69U

2011	BW	WW	YW	Milk	TM	CE	MCE	%IMF	REA	FAT
EPD's	+4.6	+30	+60	+11	+26	-4	+3	-	-	-

AT 9 YEARS OF AGE BULL BRED 40 COWS FOR JACK BUNNEY IN 2010. JACK HAS LEASED HIM FOR 2011. 26L HAS BEEN DESIGNATED AN "ELITE SIRE" BY THE CANADIAN ANGUS ASSOCIATION.

BAD LANDS ANGUS REFERENCE SIRES



G KBJ ROGUE LL 203H

MALE KBJ 203H 917165 JANUARY 27, 1998

BW: 85 LBS ADJ 205D: 671 LBS ADJ 365D: 1248 LBS

DOUBLE BAR ROGUE

GDAR ROGUE 640 (888680)

GDAR FOREVER LADY 086

KBJ ROUND MR MAJOR 129T

KBJ QUEEN 69X (672887)

KBJ ROUND QUEEN 126S

2011	BW	WW	YW	Milk	TM	CE	MCE	%IMF	REA	FAT
EPD's	+1.7	+27	+58	+8	+22	+3	+3	-	-.04	-.004

203H LEAVES FEMALES THAT ARE TO DIE FOR - MODERATE, GREAT UDDERS AND DO NOTHING BUT RAISE GOOD CALVES! SONS HAVE GREAT HAIR AND LOOK THE PART!



H RED ML MAX 862U

MALE VENO 862U 1482414 APRIL 6, 2008

BW: 82 LBS ADJ 205D: 640 LBS ADJ 365D: N/A

CROWFOOT MAX 1743L

RED CROWFOOT 6253S (1316097)

CROWFOOT PIED PIPER 3859N

RED BECKTON CLIPPER D225 JM

RED BAR-X MISS LINETT 151K (1025896)

RED BAR-X MISS LINETT 284D

2011	BW	WW	YW	Milk	TM	CE	MCE	%IMF	REA	FAT
EPD's	-4.1	+22	+47	+18	+29	+9	+6	-	+.08	+.01

CALVING EASE WITH OUT-CROSS GENETICS.

BAD LANDS ANGUS REFERENCE SIRES



SAV Initiative 4406
Sire of Ref Sire I

I SANDY CREEK INITIATIVE 52T

MALE LSC 52T 1378063 FEBRUARY 15, 2007
BW: 88 LBS ADJ 205D: 683 LBS ADJ 365D: N/A

SAV 8180 TRAVELER 004 AMF NHF CAF

SAV INITIATIVE 4406 AMF NHF CAF (1298345)

SAV MISS BOBBIE 0405

LEACHMAN RIGHT TIME AMF

SANDY CREEK GERTIE 52'04 (1206369)
 RM GERTIE 99'91

2011	BW	WW	YW	Milk	TM	CE	MCE	%IMF	REA	FAT
EPD's	+4.7	+61	+107	+23	+54	-3	+3	-	-	-

HIGH GROWTH SIRE, WITH A TON OF MIDDLE, OUT OF AN AWESOME RIGHT TIME COW.

SONS WILL GIVE YOUR CALVES THAT EXTRA JAM AT WEANING TIME.



J DUNLOUISE CORTACHY BOY D137

MALE IMP 137P 1486724 SEPT 8, 2004 NHF AMF CAF
BW: N/A ADJ 205D: N/A ADJ 365D: N/A

EROCO OF BANKHEAD

ASHLEY EULAR (US15815538)

ASHLEY EULONA

ASHLEY ELMIGHTY

CHAMPAGNE CHERRY BEE B117 (US15726484)

CHERRY BEE W9 OF CHAMPAGNE

2011	BW	WW	YW	Milk	TM	CE	MCE	%IMF	REA	FAT
EPD's	+1.5	+12	+15	+2	+8	0	+1	-	+19	+018

THE HIGHEST PROBABILITY TO BE ONE OF THE BEST SCOTTISH BULLS FOR COMBINING CARCASS, PERFORMANCE AND MATERNAL GREATNESS. ONE OF THE THICKEST MUSCLED ANGUS BULLS AND HIGHEST MARBLING BULLS PRODUCED IN THE DUNLOUISE NATIVE SCOTTISH HERD.

BAD LANDS ANGUS REFERENCE SIRES



K **GDAR GAME DAY 449**

MALE IMP 449P 1385923 FEB 9, 2004 AMF NHF CAF
BW: N/A ADJ 205D: N/A ADJ 365D: N/A

AAR NEW TREND

BOYD NEW DAY 8005 AMF NHF CAF (994200)
 SVF FOREVER LADY 57D

TEHAMA BAND 207

GDAR MISS WIX 474 (US12190986)
 GDAR MISS WIX 749

2011	BW	WW	YW	Milk	TM	CE	MCE	%IMF	REA	FAT
EPD's	-.6	+49	+97	+25	+50	+9	+11	-	+.67	+.028

MAY WELL BE ONE OF THE MOST CONSISTENT A.I. PROVEN CALVING EASE SIRES IN THE ANGUS BUSINESS THAT DOESN'T SACRIFICE REA AND MATERNAL TRAITS TO GET LOW BIRTH WEIGHT.

HE SIRES ATTRACTIVE FEMALES THAT STAND OUT WITH PHENOTYPIC EXCELLENCE.



L **BAD LANDS FORTE 16U**

MALE CDS 16U 1429059 FEBRUARY 15, 2008
BW: 82 LBS ADJ 205D: 659 LBS ADJ 365D: 1131 LBS

PAPA OPTIMA 9818

PAPA FORTE 1921 (809754)
 PAPA ENVIOUS BLACKBIRD 8832

CH QUANTUM 3330

BAD LANDS ERICA 10K (1019325)
 BAD LANDS ERICA 532E

2011	BW	WW	YW	Milk	TM	CE	MCE	%IMF	REA	FAT
EPD's	+.1	+29	+52	+19	+34	+9	-	-	-	-

DAM IS AN "ELITE" 10 YEAR OLD. FORTE DAUGHTERS ARE KNOWN FOR FEMININITY AND UDDER QUALITY.
 KEEP ALL THE DAUGHTERS!!

BAD LANDS ANGUS REFERENCE SIRES



M

CAR TRENDSETTER 642

MALE IMP 642S 1423820 JANUARY 22, 2006

BW: N/A ADJ 205D: N/A ADJ 365D: N/A

AAR NEW TREND

NEW TREND 020 CAR (US11384054)

JUMBO LADY 032 CAR

VIKING 977 GDAR

LADY VIKING 131 CAR (US9875107)

REVELLA 423 OF DB

2011	BW	WW	YW	Milk	TM	CE	MCE	%IMF	REA	FAT
EPD's	+4.5	+22	+44	+17	+28	-3	+2	-	+0.06	-.022

SOME OLD ANGUS GENETICS.



RYANN WITH UNCLE DAN AND HIS HORSE

N

BAD LANDS FORTE 101S

MALE CDS 101S 1337023 APRIL 10, 2006

BW: 99 LBS ADJ 205D: 707 LBS ADJ 365D: 1236 LBS

PAPA OPTIMA 9818

PAPA FORTE 1921 - 809754

PAPA ENVIOUS BLACKBIRD 8832

BAD LANDS R TIME 061K

BAD LANDS HEDY 323N - 1156264

BAD LANDS HYALITE HEDY 55K

2011	BW	WW	YW	Milk	TM	CE	MCE	%IMF	REA	FAT
EPD's	+5	+34	+71	+22	+39	+8	+6	-	-	-

FORTE 101'S SIRE IS ALSO THE SIRE OF REFERENCE SIRE L.
MATERNAL SIDE DAM, GRANDDAM AND GREAT GRANDDAM ARE ALL "ELITE". ENOUGH SAID.

BAD LANDS ANGUS REFERENCE SIRES



O K C F BENNETT TOTAL

MALE IMP 0239J 1083033 SEPTEMBER 26, 1999
BW: 79 LBS ADJ. 205D: N/A ADJ. 365D: N/A

SITZ TRAVELER 8180 AMF NHF
SITZ ALLIANCE 6595 AMF NHF (1036949)
 SITZ BARBARAMERE JET 2698
 N BAR EMULATION EXT AMF NHF
EXT OF CONANGA 6790 (US12797613)
 LADY ENCHANTRESS OF CONANGA

2011	BW	WW	YW	Milk	TM	CE	MCE	%IMF	REA	FAT
EPD's	-.1	+45	+82	+20	+43	+8	+11	-	+.14	+.065

THE BEST SON OF SITZ ALLIANCE FOR COMBINING PHYSICAL SUPERIORITY, PERFORMANCE AND CARCASS EXCELLENCE.
 ONE OF A KIND PROGENY WITH SQUARE HIP, RIB DEPTH AND STUNNING PROFILE.



P RED SHODEREE RED SPREAD 87R

MALE SKG 87R 1274456 FEBRUARY 15, 2005
BW: 88 LBS ADJ 205D: 725 LBS ADJ 365D: 1230 LBS

RED LMAN KING ROB 8621OSF
RED LCHMAN RED SPREAD 1271F OSF (1090508)
 RED BJR MATTIE 002 – 1102 RA151351
 RED LUK COPPER 122Y
RED SHODEREE FLOWER 6E (821923)
 RED MCFLOW 6Y

2011	BW	WW	YW	Milk	TM	CE	MCE	%IMF	REA	FAT
EPD's	0	+39	+78	+18	+37	+3	+3	-	+.07	+.01

TONS OF HAIR AND CAPACITY. GREAT TRAVELING BULL!

GENERAL INFORMATION RE THE SALE OFFERING

- EXPLANATION OF PERFORMANCE DATA -

- A.O.D.** Age of Dam
BW. Actual Birth Weight
205 Weaning Weight (*in lbs.*) adjusted to 205 days and for Age of Dam
365 Yearling weight (*in lbs.*) adjusted to 365 days

- EXPLANATION OF EPD'S -

- BW:** A prediction of a sire's ability to transmit birth weight to his progeny.
WW: Predictor of a sire's ability to transmit weaning growth to his progeny.
YW: Predictor of a sire's ability to transmit yearling growth to his progeny.
Milk: A predictor of a sire's genetic merit for milk and mothering ability as expressed in his daughters.
TM: Total Maternal = 1/2 Weaning Weight + Milk.

The 2011 Angus Average EPD's are as follows and are the numbers to compare the bulls in this catalogue to.

	<u>BW</u>	<u>WW</u>	<u>YW</u>	<u>Milk</u>	<u>TM</u>
Black Angus	+2.9	+41	+72	+17	+37
Red Angus	+0.5	+25	+49	+15	+27

PLEASE NOTE - Black Angus EPDs CANNOT be compared to Red Angus EPDs. The numbers are calculated in separate and unrelated genetic evaluations.

SPECIAL THANKS TO DR. TIM KEOGAN

DR. TIM FROM NEWELL VET CLINIC LOOKS AFTER EVERYTHING FROM HERD HEALTH TO SEMEN TESTING

PLEASE NOTE:

- SEWALL BROTHERS RESERVE THE RIGHT TO DRAW 250 STRAWS OF SEMEN AT OUR EXPENSE AND AT YOUR CONVENIENCE ON ANY BULL SELLING IN THE SALE. FOR IN-HERD USE ONLY.
- NO BULLS HAVE BEEN SOLD PRIOR TO THIS SALE.
- UPDATED WEIGHTS AND SCROTAL MEASUREMENTS AVAILABLE SALE DAY.
- ALL THE BULLS IN THE CATALOG HAVE TESTED NEGATIVE FOR BVD AND HAVE BEEN VACCINATED TWICE WITH "NOVARTIS" FOR THE PREVENTION OF FOOTROT.

- BAD LANDS ANGUS TWO YEAR OLD BULLS -

WE ARE PLEASED TO BE BRINGING YOU 30 VIRGIN TWO YEAR OLD BULLS.

THESE BULLS WERE TOO YOUNG FOR LAST YEAR'S SALE AS ALL WERE BORN AFTER APRIL 8TH.

NONE HAVE BEEN SOLD PRIOR TO THE SALE.

Downloadable Catalogue Online in Full Color at:
www.coyotepub.com/badlandsangus

BAD LANDS ANGUS TWO YEAR OLDS**107 BAD LANDS FINAL ANSWER 107W**

Male CDS 107W April 12 2009 #1502449

SITZ TRAVELER 8180 AMF CAF NHF
S A V FINAL ANSWER 0035 AMF CAF NHF (1061938)
 S A V EMULOUS 8145

BAD LANDS WIDESPREAD 17J AMF
BAD LANDS BLACKBIRD 5004R (1261660)
 BAD LANDS BLACKBIRD 33K

AOD	BW	205	365	2011	BW	WW	YW	Milk
4	76	638		EPD's	+0.8	+47	+82	+12

109 BAD LANDS BENNETT TOTAL 109W

Male CDS 109W April 12 2009 #1502451

SITZ ALLIANCE 6595 AMF NHF
K C F BENNETT TOTAL AMF CAF NHF (1083033)
 EXT OF CONANGA 6790

BAD LANDS DAQUANTAE 26L
BAD LANDS LASSIE 302N (1156290)
 BAD LANDS LASSIE 23K

AOD	BW	205	365	2011	BW	WW	YW	Milk
6	84	633		EPD's	+1.9	+34	+61	+13

110 BAD LANDS BENNETT TOTAL 110W

Male CDS 110W April 12 2009 #1502452

SITZ ALLIANCE 6595 AMF NHF
K C F BENNETT TOTAL AMF CAF NHF (1083033)
 EXT OF CONANGA 6790

HIGH VALLEY 4C6 AMBUSH AMF
BAD LANDS ANNE 257M (1121000)
 BAD LANDS ANNE 471D

AOD	BW	205	365	2011	BW	WW	YW	Milk
7	87	620		EPD's	+2.6	+34	+62	+16

112 BAD LANDS MATRIX 112W

Male CDS 112W April 12 2009 #1502454

TRIPLE E MATRIX 908
EBON HILL MATRIX 55'06 (1335218)
 DURNESS BARDELLA 55C

HIGH VALLEY 4C6 AMBUSH AMF
BAD LANDS ESTHER 4007P (1201473)
 BAD LANDS ESTHER 17K

AOD	BW	205	365	2011	BW	WW	YW	Milk
5	80	671		EPD's	+1.5	+40	+61	+15

117 BAD LANDS QUANTUM 117W

Male CDS 117W April 15 2009 #1502470

C H QUANTUM 3330
BAD LANDS QUANTUM 030K (1021511)
 BAD LANDS BLACKCLASS 13'93

BAD LANDS ECLIPSE 046K
BAD LANDS LASSIE 313N (1156275)
 BAD LANDS LASSIE 102L

AOD	BW	205	365	2011	BW	WW	YW	Milk
6	98	748		EPD's	+5.4	+38	+66	+16

BAD LANDS ANGUS TWO YEAR OLDS



Cousin Brad, Uncle Tom and Sister Janie

120 BAD LANDS DAQUANTAE 120W

Male CDS 120W April 15 2009 #1502473

R R DAQUANTAE 789E AMF CAF NHF

BAD LANDS DAQUANTAE 26L (1066872)

BAD LANDS BLACKBIRD BLOSSOM

BAD LANDS R TIME 061K

BAD LANDS BELLE 329N (1156260)

BAD LANDS BELLE 49K

AOD	BW	205	365	2011	BW	WW	YW	Milk
6	80	617		EPD's	+2.5	+28	+58	+13

122 BAD LANDS NEW FRONTIER 122W

Male CDS 122W April 16 2009 #1502476

B/R NEW DESIGN 036 AMF CAF NHF

B/R NEW FRONTIER 095 AMF CAF NHF (1115831)

WHITE FENCE PRIDE H1

HIGH VALLEY 4C6 AMBUSH AMF

BAD LANDS GEORGINA 221M (1121080)

BAD LANDS GEORGINA 840H

AOD	BW	205	365	2011	BW	WW	YW	Milk
7	80	638		EPD's	+2.0	+37	+69	+20

126 BAD LANDS DAQUANTAE 126W

Male CDS 126W April 18 2009 #1502487

R R DAQUANTAE 789E AMF CAF NHF

BAD LANDS DAQUANTAE 26L (1066872)

BAD LANDS BLACKBIRD BLOSSOM

N BAR EMULATION EXT AMF CAF NHF

BAD LANDS ERICA 60K (1019264)

BAD LANDS ELLEN ERICA 142'93

AOD	BW	205	365	2011	BW	WW	YW	Milk
9	78	635		EPD's	+2.2	+30	+59	+12

130 BAD LANDS MATRIX 130W

Male CDS 130W April 18 2009 #1502489

TRIPLE E MATRIX 908

EBON HILL MATRIX 55'06 (1335218)

DURNESS BARDELLA 55C

HERO 6267 OF R R 2418

BAD LANDS PRIDE 5057R (1270164)

BAD LANDS PRIDE 371N

AOD	BW	205	365	2011	BW	WW	YW	Milk
4	84	716		EPD's	+1.1	+43	+63	+20

BAD LANDS ANGUS TWO YEAR OLDS

132

BAD LANDS QUANTUM 132W

Male CDS 132W April 19 2009 #1502492

C H QUANTUM 3330

BAD LANDS QUANTUM 030K (1021511)

BAD LANDS BLACKLASS 13'93

N BAR EMULATION EXT AMF CAF NHF

BAD LANDS ANNE 69K (1019310)

BAD LANDS ANNE 471D

AOD	BW	205	365	2011	BW	WW	YW	Milk
9	83	665		EPD's	+2.9	+37	+68	+15

133

BAD LANDS FORTE 133W

Male CDS 133W April 19 2009 #1502493

PAPA FORTE 1921

BAD LANDS FORTE 101S (1337023)

BAD LANDS HEDY 323N

KMK ALLIANCE 6595 I87 AMF CAF NHF

BAD LANDS PRIDE 6037S (1338506)

BAD LANDS PRIDE 363N

AOD	BW	205	365	2011	BW	WW	YW	Milk
3	82	687		EPD's	+1.6	+43	+76	+18

140

BAD LANDS INITIATIVE 140W

Male CDS 140W April 23 2009 #1502506

S A V INITIATIVE 4406 AMF CAF NHF

SANDY CREEK INITIATIVE 52T (1378063)

SANDY CREEK GERTIE 82'04

HBR ECLIPSE 7116

BAD LANDS ESTHER 17K (1040580)

BAD LANDS ESTHER 719G

AOD	BW	205	365	2011	BW	WW	YW	Milk
9	68	669		EPD's	+0.8	+46	+78	+14

141

BAD LANDS FORTE 141W

Male CDS 141W April 24 2009 #1502507

PAPA FORTE 1921

BAD LANDS FORTE 101S (1337023)

BAD LANDS HEDY 323N

SPRUCE VIEW ZEB 76N

BAD LANDS BEAUTY 5007R (1261668)

BAD LANDS BEAUTY 50K AMF

AOD	BW	205	365	2011	BW	WW	YW	Milk
4	78	687		EPD's	+1.0	+35	+63	+17

142

BAD LANDS INITIATIVE 142W

Male CDS 142W April 25 2009 #1502510

S A V INITIATIVE 4406 AMF CAF NHF

SANDY CREEK INITIATIVE 52T (1378063)

SANDY CREEK GERTIE 82'04

O C C HONESTY 962H

CROWFOOT PATTIE QUEEN 4841P (1208010)

GLADWALL PATTIE QUEEN 2232

AOD	BW	205	365	2011	BW	WW	YW	Milk
5	86	664		EPD's	+3.8	+45	+80	+17

BAD LANDS ANGUS TWO YEAR OLDS

148 BAD LANDS DAQUANTAE 148W

Male CDS 148W April 28 2009 #1502523

R R DAQUANTAE 789E AMF CAF NHF
BAD LANDS DAQUANTAE 26L (1066872)
 BAD LANDS BLACKBIRD BLOSSOM

BAD LANDS TONTO 2H
BAD LANDS ANNE 5070R (1270056)
 BAD LANDS ANNE 257M

AOD	BW	205	365	2011	BW	WW	YW	Milk
4	76	691		EPD's	+1.5	+31	+56	+12

149 BAD LANDS LEGACY 149W

Male CDS 149W April 28 2009 #1502524

HILLFIRE LEGACY 422
BAD LANDS LEGACY 80T (1417506)
 BAD LANDS BLACKBIRD BLOSSOM 54

C H QUANTUM 3330
BAD LANDS LADY FANNY 57K (1019286)
 BAD LANDS LADY FANNY 412D

AOD	BW	205	365	2011	BW	WW	YW	Milk
9	80	652		EPD's	+1.1	+28	+53	+11

150 BAD LANDS FORTE 150W

Male CDS 150W April 28 2009 #1520836

PAPA FORTE 1921
BAD LANDS FORTE 101S (1337023)
 BAD LANDS HEDY 323N

DOUBLE AA BARDOLIER 532'93
ANDERS ROSEBUD 26F (849352)
 BUFFALO COULEE ROSEBUD ROSE 8B

AOD	BW	205	365	2011	BW	WW	YW	Milk
13	86	628		EPD's	+2.7	+23	+45	+19

152 BAD LANDS FORTE 152W

Male CDS 152W April 29 2009 #1502526

PAPA FORTE 1921
BAD LANDS FORTE 101S (1337023)
 BAD LANDS HEDY 323N

R R DAQUANTAE 789E AMF CAF NHF
BAD LANDS RIBBON 6095S (1335909)
 IRON SPRING BLUR RIBBON HUSK

AOD	BW	205	365	2011	BW	WW	YW	Milk
3	77	634		EPD's	+1.5	+33	+65	+15



Peek-A-Boo!

BAD LANDS ANGUS TWO YEAR OLDS

156

BAD LANDS MATRIX 156W

Male CDS 156W April 30 2009 #1502529

TRIPLE E MATRIX 908
EBON HILL MATRIX 55'06 (1335218)
 DURNESS BARDELLA 55C

HERO 6267 OF R R 2418
BAD LANDS PEARL 5102R (1270099)
 BAD LANDS PEARL 321N

AOD	BW	205	365	2011	BW	WW	YW	Milk
4	84	725		EPD's	+1.4	+43	+63	+19

160 BAD LANDS KRUGERRAND 160W

Male CDS 160W May 01 2009 #1502533

SOUTHERN KRUGGERAND 16H
WINDY WILLOWS KRUGERRAND 205T (1412192)
 WWF HERCULES JENNIFER 142K

PAPA FORTE 1921
BAD LANDS ANNE 6058S (1337161)
 BAD LANDS ANNE 471D

AOD	BW	205	365	2011	BW	WW	YW	Milk
3	66	697		EPD's	-1.7	+35	+61	+18

162 RED BAD LANDS VECTOR 162W

Male CDS 162W May 02 2009 #1502540

RED TER-RON VECTOR 015R
RED SHODEREE VECTOR 98T (1395379)
 RED SHODEREE GEMMIE 12J

RED SSS STORM 87M
RED SHODEREE ZAMBA 166P (1219062)
 RED BRYLOR ZAMBA 75L

AOD	BW	205	365	2011	BW	WW	YW	Milk
5	78	724		EPD's	+0.1	+38	+72	+13

163 BAD LANDS DAQUANTAE 163W

Male CDS 163W May 02 2009 #1502541

R R DAQUANTAE 789E AMF CAF NHF
BAD LANDS DAQUANTAE 26L (1066872)
 BAD LANDS BLACKBIRD BLOSSOM

HOFF TRIUMPH S C 927 AMF CAF NHF
BAD LANDS GEORGINA 840H (933541)
 BAD LANDS GEORGINA 492D

AOD	BW	205	365	2011	BW	WW	YW	Milk
11	74	676		EPD's	+0.9	+30	+56	+11

164 BAD LANDS DAQUANTAE 164W

Male CDS 164W May 03 2009 #1502543

R R DAQUANTAE 789E AMF CAF NHF
BAD LANDS DAQUANTAE 26L (1066872)
 BAD LANDS BLACKBIRD BLOSSOM

N BAR EMULATION EXT AMF CAF NHF
BAD LANDS LADY 42K (1019303)
 BAD LANDS LADY 466D

AOD	BW	205	365	2011	BW	WW	YW	Milk
9	87	687		EPD's	+3.8	+36	+65	+12

BAD LANDS ANGUS TWO YEAR OLDS

165 BAD LANDS INITIATIVE 165W

Male CDS 165W May 03 2009 #1502544

S A V INITIATIVE 4406 AMF CAF NHF
SANDY CREEK INITIATIVE 52T (1378063)
 SANDY CREEK GERTIE 82'04

BAD LANDS QUANTUM 066K
BAD LANDS STETSON 260M AMF (1120989)
 BAD LANDS L A STETSON 407D

AOD	BW	205	365	2011	BW	WW	YW	Milk
7	85	784		EPD's	+3.7	+58	+96	+18

167 BAD LANDS DAQUANTAE 167W

Male CDS 167W May 05 2009 #1502546

R R DAQUANTAE 789E AMF CAF NHF
BAD LANDS DAQUANTAE 26L (1066872)
 BAD LANDS BLACKBIRD BLOSSOM

BAD LANDS WIDESPREAD 17J AMF
BAD LANDS PEARL 4010P (1201488)
 BAD LANDS PEARL 46K

AOD	BW	205	365	2011	BW	WW	YW	Milk
5	78	680		EPD's	+2.8	+37	+65	+7

168 BAD LANDS KRUGERRAND 168W

Male CDS 168W May 06 2009 #1502548

SOUTHERN KRUGGERAND 16H
WINDY WILLOWS KRUGERRAND 205T (1412192)
 WWF HERCULES JENNIFER 142K

BAD LANDS DAQUANTAE 26L
BAD LANDS COUNTESS 6096S (1337059)
 BAD LANDS COUNTESS 350N

AOD	BW	205	365	2011	BW	WW	YW	Milk
3	92	749		EPD's	+3.0	+40	+70	+17

180 BAD LANDS TRENDSETTER 180W

Male CDS 180W May 11 2009 #1502561

NEW TREND 020 C A R
CAR TRENDSETTER 642 (1423820)
 LADY VIKING 131 C A R

A A R RAINMAKER 2256
GLADWALL PRINCENE 8175 (990899)
 GLADWALL PRINCENE 6175

AOD	BW	205	365	2011	BW	WW	YW	Milk
3	78	674		EPD's	+1.7	+23	+40	+16

196 RED BAD LANDS VECTOR 196W

Male CDS 196W April 25 2009 #1502514

RED TER-RON VECTOR 015R
RED SHODEREE VECTOR 98T (1395379)
 RED SHODEREE GEMMIE 12J

RED LAZY MC BLAZE 23J
RED SHODEREE LARISSA 16N (1154351)
 RED SHODEREE LARISSA 159H

AOD	BW	205	365	2011	BW	WW	YW	Milk
6	86	657		EPD's	-0.7	+29	+53	+8





GUEST CONSIGNMENT FROM HOO DOO ANGUS

SEWALL BROTHERS ARE PLEASED TO AGAIN WELCOME THE WESTWICK RANCH, GENE, KELLY, BRETT AND LANE, IN OUR 2011 BULL SALE. THEY'VE BEEN GREAT FRIENDS AND NEIGHBOURS FOR MANY YEARS.

OUR BADLANDS GUARANTEE APPLIES TO THESE BULLS AS WELL; 100% SATISFACTION.



THE WESTWICK FAMILY - (l to r standing) Lane, Brett & Gene,
(seated) Kelly

PH: 403-378-4764 CELL: 403-501-8067

197

RED HOODOO DATA 6W

Male HDR 6W April 14 2009 #1529360

RED SHOCO DATA OSF MAF

RED SHODEREE DATA 55T (1383423)

RED BRYLOR ZAMBA 75L

RED CROWFOOT DYNAMO 616F

RED CROWFOOT JJ BIRD 9108J (958091)

RED CROWFOOT BIRD 706G

AOD	BW	205	365	2011	BW	WW	YW	Milk
10	78	643		EPD's	-0.3	+24	+48	+14

198

RED BADLANDS DATA 127W

Male GKW 127W April 17 2009 #1526458

RED SHOCO DATA OSF MAF

RED SHODEREE DATA 55T (1383423)

RED BRYLOR ZAMBA 75L

RED BJR HI HO 5168

RED SHODEREE REGAL 193H (924745)

RED MC REGAL 119A

AOD	BW	205	365	2011	BW	WW	YW	Milk
11	97	660		EPD's	+1.8	+27	+48	+20

199

RED BADLANDS LEAGUE 155W

Male GKW 155W April 29 2009 #1525222

RED LCC MAJOR LEAGUE A502M OSF MAF

RED SHODEREE MAJOR 21S (1340587)

RED QW CRISTINE 54N

RED SHODEREE LANDMARK 230R

RED SHODEREE LAKOTA 89T (1383525)

RED SHODEREE LAKOTA 191P

AOD	BW	205	365	2011	BW	WW	YW	Milk
2	55	600		EPD's	-5.7	+15	+27	+16

BAD LANDS ANGUS YEARLING BULLS**300 RED BAD LANDS FORTE 300X**

Male CDS 300X February 23 2010 #1555557

SHODEREE FORTE 97S

RED SHODEREE FORTE 131U (1443701)

RED SHODEREE CHIEF 90R

RED SHODEREE MARIAS 64H

RED SHODEREE LEADING LADY 88N (1154382)

RED SHODEREE LEADING LADY 80H

AOD	BW	205	365	2011	BW	WW	YW	Milk
7	82	638		EPD's	-0.1	+23	+47	+18

301 RED BAD LANDS DATA 301X

Male CDS 301X March 02 2010 #1555558

RED SHOCHO DATA OSF MAF

RED SHODEREE DATA 73U (1443844)

RED SHODEREE MISTY 8N

RED SHODEREE LANDMARK 19F

RED SHODEREE LEADING LADY 96K (1012413)

RED SHODEREE LEADING LADY 80H

AOD	BW	205	365	2011	BW	WW	YW	Milk
10	84	638	1046	EPD's	+0.6	+36	+56	+11

303 BAD LANDS ALLIANCE 303X

Male CDS 303X March 24 2010 #1555561

KMK ALLIANCE 6595 I87 AMF CAF NHF

REMINGTON ALLIANCE 482T (1419171)

DRYLAND LADY BATE 275

BAD LANDS WIDESPREAD 17J AMF

BAD LANDS DUCHESS 5006R (1261658)

BAD LANDS DUCHESS 27K

AOD	BW	205	365	2011	BW	WW	YW	Milk
5	73	607	1002	EPD's Proj	-0.6	+18	+31	-1

304 BAD LANDS INITIATIVE 304X

Male CDS 304X March 26 2010 #1555564

S A V INITIATIVE 4406 AMF CAF NHF

SANDY CREEK INITIATIVE 52T (1378063)

SANDY CREEK GERTIE 82'04

HIGH VALLEY 4C6 AMBUSH AMF

BAD LANDS ESTHER 4007P (1201473)

BAD LANDS ESTHER 17K

AOD	BW	205	365	2011	BW	WW	YW	Milk
6	86	606	1049	EPD's Proj	+3.0	+44	+75	+18

307 BAD LANDS ROGUE 307X

Male CDS 307X March 27 2010 #1555567

G D A R ROGUE 640

KBJ ROGUE II 203H (917165)

KBJ QUEEN 69X

HOFF TRIUMPH S C 927 AMF CAF NHF

BAD LANDS QUEEN 937J (971899)

BAD LANDS QUEEN 643F

AOD	BW	205	365	2011	BW	WW	YW	Milk
11	76	666	1196	EPD's Proj	+0.5	+25	+58	+11

BAD LANDS ANGUS YEARLING BULLS

308

BAD LANDS FORTE 308X

Male CDS 308X March 27 2010 #1555568

PAPA FORTE 1921
BAD LANDS FORTE 16U (1429059)
 BAD LANDS ERICA 10K

SITZ ALLIANCE 6595 AMF NHF
T Z PENNY 1P (1197165)
 TZ JANUARY 1J

AOD	BW	205	365	2011	BW	WW	YW	Milk
6	81	646	1168	EPD's Proj	+0.7	+35	+68	+21

309

BAD LANDS INITIATIVE 309X

Male CDS 309X March 28 2010 #1555570

S A V INITIATIVE 4406 AMF CAF NHF
SANDY CREEK INITIATIVE 52T (1378063)
 SANDY CREEK GERTIE 82'04

BAD LANDS R TIME 061K
BAD LANDS BLACKBIRD 4053P (1220077)
 BAD LANDS BLACKBIRD 126'93

AOD	BW	205	365	2011	BW	WW	YW	Milk
6	96	665	1150	EPD's Proj	+5.7	+47	+83	+18



Little Cowpoke...

312

BAD LANDS ALLIANCE 312X

Male CDS 312X March 29 2010 #1555576

KMK ALLIANCE 6595 I87 AMF CAF NHF
BAD LANDS ALLIANCE 44T (1387816)
 BAD LANDS COUNTESS 214M AMF

BAD LANDS TONTO 2H
BAD LANDS ANNE 8092U (1429191)
 BAD LANDS ANNE 4097P

AOD	BW	205	365	2011	BW	WW	YW	Milk
2	54	621	1049	EPD's Proj	-0.8	+34	+62	+18

313

BAD LANDS ROGUE 313X

Male CDS 313X March 31 2010 #1555578

G D A R ROGUE 640
KBJ ROGUE II 203H (917165)
 KBJ QUEEN 69X

LEACHMAN RIGHT TIME AMF
BAD LANDS DUCHESS 364N (1172010)
 BAD LANDS DUCHESS 408D

AOD	BW	205	365	2011	BW	WW	YW	Milk
7	98	677	1093	EPD's Proj	+3.8	+38	+63	+12

BAD LANDS ANGUS YEARLING BULLS**314 RED BAD LANDS DYNAMO 314X**

Male CDS 314X March 31 2010 #1555579

RED FLYING K DYNAMO 67K

RED FLYING K DYNAMO 130R (1270819)

RED FLYING K MS ROBO 81J

RED SSS STORM 87M

RED SHODEREE LARISSA 22S (1338977)

RED SHODEREE LARISSA 159H

AOD	BW	205	365	2011	BW	WW	YW	Milk
4	60	624	1010	EPD's	-4.1	+10	+32	+17

315 BAD LANDS INITIATIVE 315X

Male CDS 315X March 31 2010 #1555580

S A V INITIATIVE 4406 AMF CAF NHF

SANDY CREEK INITIATIVE 52T (1378063)

SANDY CREEK GERTIE 82'04

HBR ECLIPSE 7116

BADLANDS PRIDE 15K (1040579)

BAD LANDS PRIDE 815H

AOD	BW	205	365	2011	BW	WW	YW	Milk
10	84	678	1088	EPD's Proj	+3.0	+44	+73	+16



Our little cowgirls - Camryn, Alysen & Ryann

316 BAD LANDS ALLIANCE 316X

Male CDS 316X March 31 2010 #1555581

KMK ALLIANCE 6595 I87 AMF CAF NHF

REMINGTON ALLIANCE 482T (1419171)

DRYLAND LADY BATE 275

BAD LANDS ADVANTAGE 8P

BAD LANDS ERICA 6068S (1336982)

BAD LANDS ERICA 156L

AOD	BW	205	365	2011	BW	WW	YW	Milk
4	82	669	1194	EPD's Proj	+1.6	+30	+54	+5

317 BAD LANDS CANUCK 317X

Male CDS 317X April 01 2010 #1555588

FIGURE 8 ANGUS TOM BOY 509R

LOOKOUT CANUCK 65U (1457403)

LOOKOUT TRIM LASS 23R

GLENRIO BANDOLIER 8X

BAD LANDS GERTIE 4087P (1220131)

BAD LANDS GERTIE 47'93

AOD	BW	205	365	2011	BW	WW	YW	Milk
6	94	617	1049	EPD's Proj	+4.5	+29	+44	+11

BAD LANDS ANGUS YEARLING BULLS**318****BAD LANDS INITIATIVE 318X**

Male CDS 318X April 01 2010 #1555589

S A V INITIATIVE 4406 AMF CAF NHF

SANDY CREEK INITIATIVE 52T (1378063)

SANDY CREEK GERTIE 82'04

BAD LANDS DAQUANTAE 26L

BAD LANDS ERICA 326N (1156289)

BAD LANDS ERICA 22K

AOD	BW	205	365	2011	BW	WW	YW	Milk
7	92	620	1143	EPD's Proj	+4.4	+44	+83	+18

319 BAD LANDS TREND SETTER 319X

Male CDS 319X April 01 2010 #1555590

NEW TREND 020 C A R

CAR TRENDSETTER 642 (1423820)

LADY VIKING 131 C A R

BAD LANDS WIDESPREAD 17J AMF

BAD LANDS GAY MATILDA 331N (1172298)

BAD LANDS GAY MATILDA 423D

AOD	BW	205	365	2011	BW	WW	YW	Milk
7	82	602	1048	EPD's Proj	+2.9	+26	+45	+11

320**BAD LANDS ALLIANCE 320X**

Male CDS 320X April 01 2010 #1555591

KMK ALLIANCE 6595 I87 AMF CAF NHF

REMINGTON ALLIANCE 482T (1419171)

DRYLAND LADY BATE 275

PAPA FORTE 1921

BAD LANDS DUCHESS 7027T (1387805)

BAD LANDS DUCHESS 526E

AOD	BW	205	365	2011	BW	WW	YW	Milk
3	72	635	1145	EPD's Proj	-0.9	+13	+31	+8

321**BAD LANDS INITIATIVE 321X**

Male CDS 321X April 01 2010 #1555592

S A V INITIATIVE 4406 AMF CAF NHF

SANDY CREEK INITIATIVE 52T (1378063)

SANDY CREEK GERTIE 82'04

BAD LANDS DAQUANTAE 26L

BAD LANDS TINGE 6083S (1335905)

BAD LANDS TINGE 23'92

AOD	BW	205	365	2011	BW	WW	YW	Milk
4	70	640	1061	EPD's Proj	0.1	+35	+63	+19

322**BAD LANDS CANUCK 322X**

Male CDS 322X April 01 2010 #1555593

FIGURE 8 ANGUS TOM BOY 509R

LOOKOUT CANUCK 65U (1457403)

LOOKOUT TRIM LASS 23R

BAD LANDS TONTO 2H

BAD LANDS BARBARA 4070P (1220104)

BAD LANDS BARBARA 243M

AOD	BW	205	365	2011	BW	WW	YW	Milk
6	79	697	1130	EPD's Proj	+1.4	+38	+61	+17

BAD LANDS ANGUS YEARLING BULLS

323 BAD LANDS KRUGERRAND 323X

Male CDS 323X April 02 2010 #1555597

SOUTHERN KRUGGERAND 16H
WINDY WILLOWS KRUGERRAND 205T (1412192)
 WWF HERCULES JENNIFER 142K

BAD LANDS ADVANTAGE 8P
BAD LANDS ANNE 7050T (1387844)
 BAD LANDS ANNE 4015P

AOD	BW	205	365	2011	BW	WW	YW	Milk
3	66	679	1139	EPD's Proj	-2.7	+36	+68	+18

324 BAD LANDS FORTE 324X

Male CDS 324X April 02 2010 #1555598

PAPA FORTE 1921
BAD LANDS FORTE 5S (1321570)
 BAD LANDS PRINCESS 63K

LEACHMAN RIGHT TIME AMF
BAD LANDS COUNTESS 350N (1171996)
 BAD LANDS COUNTESS 44'91

AOD	BW	205	365	2011	BW	WW	YW	Milk
7	73	566	988	EPD's Proj	-0.7	+22	+38	+16

325 BAD LANDS CANUCK 325X

Male CDS 325X April 02 2010 #1555599

FIGURE 8 ANGUS TOM BOY 509R
LOOKOUT CANUCK 65U (1457403)
 LOOKOUT TRIM LASS 23R

BAD LANDS QUANTUM 035K
BAD LANDS BLACKCAP 346N (1171984)
 BAD LANDS BLACKCAP 162L

AOD	BW	205	365	2011	BW	WW	YW	Milk
7	87	624	1047	EPD's Proj	+2.4	+36	+60	+13

326 BAD LANDS ALLIANCE 326X

Male CDS 326X April 02 2010 #1555600

KMK ALLIANCE 6595 I87 AMF CAF NHF
BAD LANDS ALLIANCE 44T (1387816)
 BAD LANDS COUNTESS 214M AMF

MINBURN FORTUNE 87R
BAD LANDS COUNTESS 8083 (1429183)
 BAD LANDS COUNTESS 214M AMF

AOD	BW	205	365	2011	BW	WW	YW	Milk
47	651	1083		EPD's Proj	-1.9	+43	+80	+20

327 BAD LANDS FORTE 327X

Male CDS 327X April 03 2010 #1555607

PAPA FORTE 1921
BAD LANDS FORTE 5S (1321570)
 BAD LANDS PRINCESS 63K

HIGH VALLEY 4C6 AMBUSH AMF
BAD LANDS ROSETTE 4032P (1220050)
 BAD LANDS ROSETTE 823H

AOD	BW	205	365	2011	BW	WW	YW	Milk
6	80	666	1145	EPD's Proj	+2.2	+33	+56	+15

BAD LANDS ANGUS YEARLING BULLS

330 BAD LANDS KRUGERRAND 330X

Male CDS 330X April 03 2010 #1555610

SOUTHERN KRUGGERAND 16H
WINDY WILLOWS KRUGERRAND 205T (1412192)
 WWF HERCULES JENNIFER 142K

KMK ALLIANCE 6595 I87 AMF CAF NHF
BAD LANDS GEORGINA 7004T (1387761)
 BAD LANDS GEORGINA 38K

AOD	BW	205	365	2011	BW	WW	YW	Milk
3	74	687	1246	EPD's Proj	-0.5	+42	+81	+15

331 BAD LANDS ALLIANCE 331X

Male CDS 331X April 03 2010 #1555611

KMK ALLIANCE 6595 I87 AMF CAF NHF
REMINGTON ALLIANCE 482T (1419171)
 DRYLAND LADY BATE 275

PAPA FORTE 1921
BAD LANDS BELLE 7028T (1387806)
 BAD LANDS BELLE 329N

AOD	BW	205	365	2011	BW	WW	YW	Milk
3	60	604	1119	EPD's Proj	-4.0	+5	+21	+11

332 BAD LANDS GAME DAY 332X

Male CDS 332X April 03 2010 #1555612

BOYD NEW DAY 8005 AMF CAF NHF
GDAR GAME DAY 449 AMF CAF NHF (1385923)
 G D A R MISS WIX 474

BAD LANDS QUANTUM 030K
BAD LANDS PRINCESS 8041U (1429114)
 BAD LANDS PRINCESS 63K

AOD	BW	205	365	2011	BW	WW	YW	Milk
2	56	638	1128	EPD's Proj	+0.8	+42	+84	+19

333 BAD LANDS KRUGERRAND 333X

Male CDS 333X April 04 2010 #1555618

SOUTHERN KRUGGERAND 16H
WINDY WILLOWS KRUGERRAND 205T (1412192)
 WWF HERCULES JENNIFER 142K

SPRUCE VIEW ZEB 76N
BAD LANDS LADY 7011T (1387772)
 BAD LANDS LADY 311N

AOD	BW	205	365	2011	BW	WW	YW	Milk
2	72	714	1232	EPD's Proj	+0.6	+39	+70	+13

334 BAD LANDS CORTACHY BOY 334X

Male CDS 334X April 04 2010 #1555619

ASHLEY EULAR
DUNLOUISE CORTACHY BOY D137 AMF CAF NHF (1486724)
 CHAMPAGNE CHERRY BEE B117

N BAR EMULATION EXT AMF CAF NHF
BAD LANDS ANNE 69K (1019310)
 BAD LANDS ANNE 471D

AOD	BW	205	365	2011	BW	WW	YW	Milk
10	92	596	988	EPD's Proj	+3.3	+23	+33	+8

BAD LANDS ANGUS YEARLING BULLS

335

BAD LANDS FORTE 335X

Male CDS 335X April 04 2010 #1555620

PAPA FORTE 1921

BAD LANDS FORTE 5S (1321570)

BAD LANDS PRINCESS 63K

HERO 6267 OF R R 2418

BAD LANDS ROSETTE 5045R (1270150)

BAD LANDS ROSETTE 348N

AOD	BW	205	365	2011	BW	WW	YW	Milk
5	74	628	1113	EPD's Proj	0.5	+26	+45	+20

337

RED BAD LANDS MISSION 337X

Male CDS 337X April 04 2010 #1555621

RED LJC LANCER 806 OSF

RED LJC MISSION STATEMENT P27 OSF MAF (1318819)

RED LJC HANNAH 106 OSF

RED DIAMOND D HI HO 616K

WSS DUCHESS 0315 (1151000)

KBJ FRAN 76A

AOD	BW	205	365	2011	BW	WW	YW	Milk
	82	647	1111	EPD's	+0.3	+32	+70	+15

340

RED BAD LANDS MAX 340X

Male CDS 340X April 05 2010 #1580732

RED CROWFOOT 6253S

RED ML MAX 862U (1482414)

RED BAR-X MISS LINETT 151K

RED SSS STORM 87M

RED BAD LANDS QUIN 8035U (1429101)

RED SHODEREE QUIN 185P

AOD	BW	205	365	2011	BW	WW	YW	Milk
2	66	613	1038	EPD's	+0.1	+34	+66	+13

341

BAD LANDS FORTE 341X

Male CDS 341X April 05 2010 #1555625

PAPA FORTE 1921

BAD LANDS FORTE 16U (1429059)

BAD LANDS ERICA 10K

SITZ ALLIANCE 6595 AMF NHF

T Z PRINCESS 3P (1197164)

T Z HANNA 2H

AOD	BW	205	365	2011	BW	WW	YW	Milk
6	95	751	1240	EPD's Proj	+4.3	+45	+78	+20

342

BAD LANDS FORTE 342X

Male CDS 342X April 05 2010 #1555626

PAPA FORTE 1921

BAD LANDS FORTE 16U (1429059)

BAD LANDS ERICA 10K

HIGH VALLEY 4C6 AMBUSH AMF

BAD LANDS ZARA 205M (1121061)

LOMA LANES ZARA 22G

AOD	BW	205	365	2011	BW	WW	YW	Milk
8	70	625	1046	EPD's Proj	-0.6	+24	+46	+17

BAD LANDS ANGUS YEARLING BULLS**343****BAD LANDS ROGUE 343X**

Male CDS 343X April 06 2010 #1555629

G D A R ROGUE 640

KBJ ROGUE II 203H (917165)

KBJ QUEEN 69X

R R DAQUANTAE 789E AMF CAF NHF

BAD LANDS BB BLOSSOM 4067P (1220099)

BAD LANDS B B BLOSSOM 913J

AOD	BW	205	365	2011	BW	WW	YW	Milk
6	86	651	1159	EPD's Proj	+2.1	+32	+67	+11

345 BAD LANDS CORTACHY BOY 345X

Male CDS 345X April 06 2010 #1555630

ASHLEY EULAR

DUNLOUISE CORTACHY BOY D137 AMF CAF NHF (1486724)

CHAMPAGNE CHERRY BEE B117

SPRUCE VIEW ZEB 76N

BAD LANDS DELIA 5031R (1261652)

BAD LANDS DELIA 12K

AOD	BW	205	365	2011	BW	WW	YW	Milk
5	76	616	1007	EPD's Proj	+0.2	+18	+23	+7

346**BAD LANDS GAME DAY 346X**

Male CDS 346X April 06 2010 #1555631

BOYD NEW DAY 8005 AMF CAF NHF

GDAR GAME DAY 449 AMF CAF NHF (1385923)

G D A R MISS WIX 474

MINBURN FORTUNE 87R

BAD LANDS COUNTESS 8014U (1429062)

BAD LANDS COUNTESS 35K

AOD	BW	205	365	2011	BW	WW	YW	Milk
2	56	656	1109	EPD's Proj	+1.0	+43	+84	+17

349**BAD LANDS ALLIANCE 349X**

Male CDS 349X April 07 2010 #1555638

KMK ALLIANCE 6595 I87 AMF CAF NHF

REMINGTON ALLIANCE 482T (1419171)

DRYLAND LADY BATE 275

BAD LANDS DAQUANTAE 26L

BAD LANDS COUNTESS 6096S (1337059)

BAD LANDS COUNTESS 350N

AOD	BW	205	365	2011	BW	WW	YW	Milk
4	97	720	1246	EPD's Proj	+5.8	+32	+58	+8

350**BAD LANDS ROGUE 350X**

Male CDS 350X April 07 2010 #1555639

G D A R ROGUE 640

KBJ ROGUE II 203H (917165)

KBJ QUEEN 69X

C H QUANTUM 3330

BAD LANDS ERICA 10K (1019325)

BAD LANDS ERICA 532E

AOD	BW	205	365	2011	BW	WW	YW	Milk
10	85	669	1098	EPD's Proj	+1.5	+30	+57	+11

BAD LANDS ANGUS YEARLING BULLS**353 BAD LANDS TREND SETTER 353X**

Male CDS 353X April 07 2010 #1555642

NEW TREND 020 C A R

CAR TRENDSETTER 642 (1423820)

LADY VIKING 131 C A R

HIGH VALLEY 4C6 AMBUSH AMF

BAD LANDS HYALITE HEDY 4068P (1220102)

BAD LANDS HYALITE HEDY 921J

AOD	BW	205	365	2011	BW	WW	YW	Milk
6	85	612	1112	EPD's Proj	+1.9	+24	+53	+18

354 BAD LANDS CORTACHY BOY 354X

Male CDS 354X April 07 2010 #1555643

ASHLEY EULAR

DUNLOUISE CORTACHY BOY D137 AMF CAF NHF (1486724)

CHAMPAGNE CHERRY BEE B117

LEACHMAN RIGHT TIME AMF

BAD LANDS HYALITE HEDY 4031P (1220049)

BAD LANDS HYALITE HEDY 190L

AOD	BW	205	365	2011	BW	WW	YW	Milk
6	80	610	995	EPD's Proj	+0.5	+21	+32	+10

355 BAD LANDS CANUCK 355X

Male CDS 355X April 07 2010 #1555644

FIGURE 8 ANGUS TOM BOY 509R

LOOKOUT CANUCK 65U (1457403)

LOOKOUT TRIM LASS 23R

KMK ALLIANCE 6595 I87 AMF CAF NHF

BAD LANDS PRIDE 6037S (1338506)

BAD LANDS PRIDE 363N

AOD	BW	205	365	2011	BW	WW	YW	Milk
4	92	721	1152	EPD's Proj	+4.2	+51	+78	+15

356 BAD LANDS ROGUE 356X

Male CDS 356X April 07 2010 #1555645

G D A R ROGUE 640

KBJ ROGUE II 203H (917165)

KBJ QUEEN 69X

SITZ TRAVELER 8180 AMF CAF NHF

BAD LANDS HYALITE HEDY 55K (1019375)

BAD LANDS HYALITE HEDY 710G

AOD	BW	205	365	2011	BW	WW	YW	Milk
10	86	623	1092	EPD's Proj	+0.7	+29	+61	+14

357 RED BAD LANDS MAX 357X

Male CDS 357X April 08 2010 #1580734

RED CROWFOOT 6253S

RED ML MAX 862U (1482414)

RED BAR-X MISS LINETT 151K

RED SSS STORM 87M

RED BAD LANDS MISS PINK 8046U (1429122)

RED MAC MISS PINK 90F

AOD	BW	205	365	2011	BW	WW	YW	Milk
2	74	607	1005	EPD's	-0.7	+20	+45	+13

BAD LANDS ANGUS YEARLING BULLS**358 BAD LANDS CORTACHY BOY 358X**

Male CDS 358X April 08 2010 #1555651

ASHLEY EULAR

DUNLOUISE CORTACHY BOY D137 AMF CAF NHF (1486724)
CHAMPAGNE CHERRY BEE B117

BAD LANDS QUANTUM 035K

BAD LANDS COUNTESS 393N (1171885)

BAD LANDS COUNTESS 0142

AOD	BW	205	365	2011	BW	WW	YW	Milk
7	81	605	995	EPD's Proj	+0.9	+21	+36	+9

360 BAD LANDS CANUCK 360X

Male CDS 360X April 08 2010 #1555652

FIGURE 8 ANGUS TOM BOY 509R

LOOKOUT CANUCK 65U (1457403)

LOOKOUT TRIM LASS 23R

GLENRIO BANDOLIER 8X

BAD LANDS LADY 4090P (1220141)

BAD LANDS LADY 920J

AOD	BW	205	365	2011	BW	WW	YW	Milk
6	94	724	1158	EPD's Proj	+5.2	+43	+65	+11

361 BAD LANDS INITIATIVE 361X

Male CDS 361X April 08 2010 #1555653

S A V INITIATIVE 4406 AMF CAF NHF

SANDY CREEK INITIATIVE 52T (1378063)

SANDY CREEK GERTIE 82'04

SITZ TRAVELER 7594

BAD LANDS PRINCESS 5085R (1270076)

BAD LANDS PRINCESS 730G

AOD	BW	205	365	2011	BW	WW	YW	Milk
5	95	610	1055	EPD's Proj	+6.2	+51	+81	+13

362 BAD LANDS CANUCK 362X

Male CDS 362X April 10 2010 #1555666

FIGURE 8 ANGUS TOM BOY 509R

LOOKOUT CANUCK 65U (1457403)

LOOKOUT TRIM LASS 23R

BAD LANDS QUANTUM 035K

BAD LANDS BLACKCAP 5121R (1269953)

BAD LANDS BLACKCAP 372N

AOD	BW	205	365	2011	BW	WW	YW	Milk
5	90	668	1061	EPD's Proj	+3.6	+37	+59	+17

364 BAD LANDS ALLIANCE 364X

Male CDS 364X April 10 2010 #1555667

KMK ALLIANCE 6595 I87 AMF CAF NHF

REMINGTON ALLIANCE 482T (1419171)

DRYLAND LADY BATE 275

HOFF TRIUMPH S C 927 AMF CAF NHF

BAD LANDS GEORGINA 840H (933541)

BAD LANDS GEORGINA 492D

AOD	BW	205	365	2011	BW	WW	YW	Milk
12	79	632	1072	EPD's Proj	+0.4	+18	+33	+6

BAD LANDS ANGUS YEARLING BULLS**365 BAD LANDS KRUGERRAND 365X**

Male CDS 365X April 10 2010 #1555668

SOUTHERN KRUGGERAND 16H
WINDY WILLOWS KRUGERRAND 205T (1412192)
WWF HERCULES JENNIFER 142KMINBURN FORTUNE 87R
BAD LANDS BLACKBIRD 7037T (1392851)
BAD LANDS BLACKBIRD 928J

AOD	BW	205	365	2011	BW	WW	YW	Milk
3	79	639	1140	EPD's Proj	+0.5	+37	+72	+17

366 BAD LANDS ALLIANCE 366X

Male CDS 366X April 10 2010 #1555669

KMK ALLIANCE 6595 I87 AMF CAF NHF
REMINGTON ALLIANCE 482T (1419171)
DRYLAND LADY BATE 275BAD LANDS DAQUANTAE 26L
BAD LANDS HYALITE HEDY 6073S (1337020)
BAD LANDS HYALITE HEDY 921J

AOD	BW	205	365	2011	BW	WW	YW	Milk
4	92	717	1203	EPD's Proj	+4.2	+38	+67	+5

367 BAD LANDS FORTE 367X

Male CDS 367X April 10 2010 #1555670

PAPA FORTE 1921
BAD LANDS FORTE 16U (1429059)
BAD LANDS ERICA 10KQAS T Z MILLER 6M
T Z PRETTY 5P (1197170)
T Z MISS PRETTY 8M

AOD	BW	205	365	2011	BW	WW	YW	Milk
6	77	666	1176	EPD's Proj	+0.2	+32	+63	+17

369 BAD LANDS ALLIANCE 369X

Male CDS 369X April 11 2010 #1555681

KMK ALLIANCE 6595 I87 AMF CAF NHF
BAD LANDS ALLIANCE 44T (1387816)
BAD LANDS COUNTESS 214M AMFSPRUCE VIEW ZEB 76N
BAD LANDS LASSIE 8087U (1429186)
BAD LANDS LASSIE 4008P

AOD	BW	205	365	2011	BW	WW	YW	Milk
2	60	639	1072	EPD's Proj	+1.2	+43	+69	+13

370 BAD LANDS INITIATIVE 370X

Male CDS 370X April 12 2010 #1555688

S A V INITIATIVE 4406 AMF CAF NHF
SANDY CREEK INITIATIVE 52T (1378063)
SANDY CREEK GERTIE 82'04R R DAQUANTAE 789E AMF CAF NHF
BAD LANDS LADY FANNY 5086R (1270082)
BAD LANDS LADY FANNY 412D

AOD	BW	205	365	2011	BW	WW	YW	Milk
5	96	639	1069	EPD's Proj	+5.5	+47	+76	+15

BAD LANDS ANGUS YEARLING BULLS

371

BAD LANDS ALLIANCE 371X

Male CDS 371X April 12 2010 #1555689

KMK ALLIANCE 6595 I87 AMF CAF NHF
REMINGTON ALLIANCE 482T (1419171)
 DRYLAND LADY BATE 275

N BAR EMULATION EXT AMF CAF NHF
BAD LANDS ROSETTE 823H (933516)
 BAD LANDS ROSETTE 87'93

AOD	BW	205	365	2011	BW	WW	YW	Milk
12	87	694	1160	EPD's Proj	+3.8	+31	+55	+6

372

BAD LANDS INITIATIVE 372X

Male CDS 372X April 12 2010 #1555691

S A V INITIATIVE 4406 AMF CAF NHF
SANDY CREEK INITIATIVE 52T (1378063)
 SANDY CREEK GERTIE 82'04

BAD LANDS QUANTUM 066K
BAD LANDS LADY 4023P (1220180)
 BAD LANDS LADY 846H

AOD	BW	205	365	2011	BW	WW	YW	Milk
6	85	596	1022	EPD's Proj	+3.3	+35	+67	+17

374

BAD LANDS CANUCK 374X

Male CDS 374X April 12 2010 #1555692

FIGURE 8 ANGUS TOM BOY 509R
LOOKOUT CANUCK 65U (1457403)
 LOOKOUT TRIM LASS 23R

BAD LANDS WIDESPREAD 17J AMF
BAD LANDS HEDY 5019R (1261670)
 BAD LANDS HYALITE HEDY 55K

AOD	BW	205	365	2011	BW	WW	YW	Milk
5	76	677	1131	EPD's Proj	+0.7	+40	+68	+11

375

BAD LANDS INITIATIVE 375X

Male CDS 375X April 13 2010 #1555699

S A V INITIATIVE 4406 AMF CAF NHF
SANDY CREEK INITIATIVE 52T (1378063)
 SANDY CREEK GERTIE 82'04

BAD LANDS DAQUANTAE 26L
BAD LANDS LADY 311N (1156262)
 BAD LANDS BLACKCAP LADY 52K

AOD	BW	205	365	2011	BW	WW	YW	Milk
7	88	707	1189	EPD's Proj	+4.2	+49	+86	+18

378 BAD LANDS KRUGERRAND 378X

Male CDS 378X April 13 2010 #1555700

SOUTHERN KRUGGERAND 16H
WINDY WILLOWS KRUGERRAND 205T (1412192)
 WWF HERCULES JENNIFER 142K

KMK ALLIANCE 6595 I87 AMF CAF NHF
BAD LANDS PEARL 7057T (1387855)
 BAD LANDS PEARL 4033P

AOD	BW	205	365	2011	BW	WW	YW	Milk
3	85	671	1165	EPD's Proj	+1.8	+45	+79	+18

BAD LANDS ANGUS YEARLING BULLS

379

BAD LANDS ALLIANCE 379X

Male CDS 379X April 14 2010 #1555707

KMK ALLIANCE 6595 I87 AMF CAF NHF
REMINGTON ALLIANCE 482T (1419171)
 DRYLAND LADY BATE 275

BAD LANDS WIDESPREAD 17J AMF
BAD LANDS PEARL 4010P (1201488)
 BAD LANDS PEARL 46K

AOD	BW	205	365	2011	BW	WW	YW	Milk
6	96	659	1186	EPD's Proj	+5.4	+31	+51	+2

381

BAD LANDS ALLIANCE 381X

Male CDS 381X April 15 2010 #1555717

KMK ALLIANCE 6595 I87 AMF CAF NHF
BAD LANDS ALLIANCE 44T (1387816)
 BAD LANDS COUNTESS 214M AMF

PAPA FORTE 1921
BAD LANDS BELLE 8094U (1429193)
 BAD LANDS BELLE 329N

AOD	BW	205	365	2011	BW	WW	YW	Milk
2	64	632	1081	EPD's Proj	+1.0	+38	+73	+20

396

RED BAD LANDS MAX 396X

Male CDS 396X April 17 2010 #1580788

RED CROWFOOT 6253S
RED ML MAX 862U (1482414)
 RED BAR-X MISS LINETT 151K

RED SHODEREE RED SPREAD 87R
RED BAD LANDS CORALITE 8028U (1429087)
 RED SHODEREE CORALITE 4N

AOD	BW	205	365	2011	BW	WW	YW	Milk
2	61	598	973	EPD's	-1.7	+31	+61	+15

399

BAD LANDS ALLIANCE 399X

Male CDS 399X April 17 2010 #1555745

KMK ALLIANCE 6595 I87 AMF CAF NHF
BAD LANDS ALLIANCE 44T (1387816)
 BAD LANDS COUNTESS 214M AMF

BASIN MAX 602C AMF CAF NHF
T Z SASSY 1S (1309099)
 T Z HANNA 2H

AOD	BW	205	365	2011	BW	WW	YW	Milk
4	75	669	1163	EPD's Proj	+0.6	+43	+82	+16

404

BAD LANDS IN FOCUS 404X

Male CDS 404X April 18 2010 #1555757

S A F FOCUS OF E R AMF CAF NHF
MYTTY IN FOCUS AMF CAF NHF (1251205)
 MYTTY COUNTESS 906

SITZ ALLIANCE 6595 AMF NHF
T Z SNOWFLAKE 10S (1309098)
 T Z HOLLY 1H

AOD	BW	205	365	2011	BW	WW	YW	Milk
4	67	645	1106	EPD's Proj	-1.2	+41	+80	+24

BAD LANDS ANGUS YEARLING BULLS

409

RED BAD LANDS MAX 409X

Male CDS 409X April 19 2010 #1580799

RED CROWFOOT 6253S

RED ML MAX 862U (1482414)

RED BAR-X MISS LINETT 151K

RED BASIN HOBO 79E OSF MAF

RED BAD LANDS DUCHESS 8017U (1429066)

RED SHODEREE DUCHESS 42S

AOD	BW	205	365	2011	BW	WW	YW	Milk
2	65	641	1037	EPD's	-3.5	+27	+53	+19

ANGUS YEARLING BULL CONSIGNMENT FROM HOODOO



Brett, Gene & Lane Westwick with Kelly Laughlin

501

RED HOODOO RED SPREAD 1X

Male TW GKW 1X March 23 2010 #1581088

RED LCHMN RED SPREAD 1271F OSF MAF

RED SHODEREE RED SPREAD 87R (1274456)

RED SHODEREE FLOWER 6E

RED FLYING K CHISOLM 28K

RED SHODEREE ERYANN 107M (1101092)

SHODEREE ERYANN 185G

AOD	BW	205	365	2011	BW	WW	YW	Milk
8	70	578		EPD's	+1.1	+32	+64	+8

502

RED HOODOO RED SPREAD 2X

Male GKW 2X April 02 2010 #1572972

RED LCHMN RED SPREAD 1271F OSF MAF

RED SHODEREE RED SPREAD 87R (1274456)

RED SHODEREE FLOWER 6E

RED SHODEREE MAJESTIC 331E

RED SHODEREE PRUDENCE 211H (924759)

RED MC PRUDENCE 7A

AOD	BW	205	365	2011	BW	WW	YW	Milk
12	72	671		EPD's	+0.4	+34	+66	+13

503

RED HOODOO RED SPREAD 3X

Male GKW 3X April 04 2010 #1572974

RED LCHMN RED SPREAD 1271F OSF MAF

RED SHODEREE RED SPREAD 87R (1274456)

RED SHODEREE FLOWER 6E

RED LMN IMPRESSIVE ROB 1095B OSF

RED SANDY CREEK PATHY 69/00 (1009372)

RED SANDY CREEK PATHY 8'94

AOD	BW	205	365	2011	BW	WW	YW	Milk
	76	654		EPD's	-1.1	+25	+57	+19

ANGUS YEARLING BULL CONSIGNMENT FROM HOO DOO

504 **RED HOODOO RED SPREAD 4X**

Male GKW 4X April 04 2010 #1573004

RED LCHMN RED SPREAD 1271F OSF MAF
RED SHODEREE RED SPREAD 87R (1274456)
RED SHODEREE FLOWER 6E

RED SHODEREE MARIAS 64H
RED SHODEREE CORISSA 47N (1154442)
RED SHODEREE CORISSA 33K

AOD	BW	205	365	2011	BW	WW	YW	Milk
7	93	692		EPD's	+1.0	+32	+65	+17

507 **RED HOODOO RED SPREAD 7X**

Male GKW 7X April 09 2010 #1572976

RED LCHMN RED SPREAD 1271F OSF MAF
RED SHODEREE RED SPREAD 87R (1274456)
RED SHODEREE FLOWER 6E

RED BJR MAKE MY DAY 981 OSF MAF
RED SHODEREE MISS 1M (1101005)
RED OPEN A V MISS "T" 44K

AOD	BW	205	365	2011	BW	WW	YW	Milk
8	81	699		EPD's	-1.9	+29	+66	+20

508 **RED HOODOO RED SPREAD 8X**

Male GKW 8X April 11 2010 #1573088

RED LCHMN RED SPREAD 1271F OSF MAF
RED SHODEREE RED SPREAD 87R (1274456)
RED SHODEREE FLOWER 6E

RED SOO LINE LANCER 127M
RED SHODEREE VEROLA 66R (1267364)
RED SHODEREE VEROLA 77J

AOD	BW	205	365	2011	BW	WW	YW	Milk
5	90	729		EPD's	+0.7	+35	+64	+13

509 **RED HOODOO RED SPREAD 9X**

Male GKW 9X April 11 2010 #1573091

RED LCHMN RED SPREAD 1271F OSF MAF
RED SHODEREE RED SPREAD 87R (1274456)
RED SHODEREE FLOWER 6E

RED RUNNING BAR TMD 13E
RED SHODEREE DUCHESS 85S (1340584)
RED SHODEREE DUCHESS 171M

AOD	BW	205	365	2011	BW	WW	YW	Milk
4	97	788		EPD's	+1.4	+48	+84	+14



Our Hoo Doo Gal, Kelly Westwick

A BIG THANK YOU TO OUR SPONSORS!

We extend a heartfelt "THANK YOU" to our sponsors who help make our event possible. These businesses are true "Partners in Agriculture" and we encourage you, whenever possible, to please show them your support by patronizing their businesses.

1950 Brier Park Road
Medicine Hat, AB
T1A 7E4



Landmark Feeds

Ph: 403.527.5600
Fax: 403.526.2393

Owen Syverson
Territory Manager

1475 Wheatland Trail
Strathmore, AB Canada T1P 1K1

Direct Line: (403) 934-6024

Cellular: (403) 501-9102

Fax: (403) 934-6425

Toll Free: (800) 266-9365

e-mail: owen.syverson@nutreco.ca



Chartered Accountants

Tyler W. Mossey, CA
Partner

Box 460,

Bay 2, 320-8th Ave. W.

Brooks, Alberta T1R 1B5

Tel: (403) 362-3472

Fax: (403) 362-7448

tmossey@bevanandpartners.ca

Newell Veterinary Clinic



Box 339,
Brooks, AB T1R 1B4

DR. CATHY OLSEN
DR. TIM KEOGAN
& ASSOCIATES

Ph: 403-362-3273



RBC
Royal Bank

Commercial Markets
& Business Banking

Brooks, AB T1R 1B2

220-2nd St. West / P.O. Box 40

Jessica Gerrits
Account Manager Agriculture
jessica.gerrits@rbc.com

Ph: 403-793-6556

C.M. (Chuck) Eggen
Business Acct. Mgr.

Ph: 403-793-8910

Fax: 403-362-8252



Deanna Tomlinson CAB
Assistant Manager

315 2nd St. West, P.O. Box 1510
Brooks, Alberta T1R 1C4

Tel: 403.362.3301 Fax: 403.362.5379

800.561.1031

deanna.tomlinson@westernfg.ca

UFA

Co-operative Limited

P.O. Box 1843
Brooks, Alberta T1R 1C5

UFA.com

GERALD TREMBECKI

Agent

Books Agency

DIRECT: 403.462.8735

CELL: 403.793.0937

HOME: 403.378.4990

geraldtrembecki@xplornet.com

A BIG THANK YOU TO OUR SPONSORS!



Curtis Delver, B.S.A.
Technical Sales Representative



Merial Canada Inc.

Tel: 1-888-637-4251 / Fax: (403) 553-4282

Box 1196, Fort Macleod, Ab. TOL OZO

Curtis_Delver@Merial-ca.com



Canadian Farm Insurance Corp.

Heather Barr - 780-853-7067



Heather will be on hand Sale Day



K.B. HURLBURT AUCTIONEERS

Your Auctioneering Team
for livestock & horse sales

Brant Hurlburt
Auctioneer
Phone: 403-330-8866



**ANIMAL
NUTRITION**

PROTEIN & MINERAL SUPPLEMENTS

CLAYTON KEELEY

Territory Manager (Lethbridge)

Archer Daniels Midland Company

Animal Health & Nutrition Division

1310 - 41st Street North

Lethbridge, Alberta, Canada T1H 5V3

dwoodward@ahn.admworld.com

Ph: 403-320-2659

Fax: 403-328-9141

Cell: 403-330-4566

Toll Free: 800-661-8068



MORGAN CROSSLAND

Manager

Box 730
600 - Industrial Road
Brooks, AB
T1R 1B6



Bus: (403) 362-5700

Fax: (403) 362-7066

Res: (403) 363-0851

morgan@agcompetroleum.com

SUNDIAL LIVESTOCK FEEDERS LTD



BOX 359

PH: (403) 641-3500

EMAIL: SUNDIAL@EIDNET.ORG

BASSANO, AB. TOJ OBO

FAX: (403) 641-2234

CHRIS TETREAU

MANAGER

CELL: (403) 633-0890

Millennium Genetics Ltd.

Box 671, Lethbridge, AB T1J 3Z6

STAN SZWEDOWICZ

Area Sales Representative

Ph: (403) 329-0777 • Mobile (403) 330-9626

E-mail: stan@millennium-genetics.com

web: www.millenniumgenetics.com

Semen Sales • Storage • Liquid Nitrogen • Supplies

"PARTNERS IN GENETIC PROGRESS"



A BIG THANK YOU TO OUR SPONSORS!

UFA

Corporate Limited

P.O. Box 1883
Brooks, Alberta T9J 1C6

UFA.com

TOM TREMBECKI

Agent
Books Agency

DIRECT: 403.462.8735

CELL: 403.501.8901

HOME: 403.362.0403

RES: 403.378.3545



JOHN DEERE

Evergreen
Equipment Ltd.

Brooks • Bassano • Drumheller • Hanna

#101, 2248-13th Ave. S.E. • Medicine Hat, AB T1A 8G6



**BURNS
VALKENBURG**
& Associates Inc
Chartered Accountants

TODD K. VALKENBURG

B. Mgmt., C.A.
Partner

Medicine Hat: (403) 527-8114

Bow Island: (403) 545-2217

Brooks: (403) 362-5292

Fax: (403) 526-0908

Cell: (403) 548-4607

Res: (403) 52360-5984

Email: todd.valkenburg@bvateam.com



Ron Lowen

Brooks Market Centre Manager
Agri Products

Box 1209, Brooks, AB T1R 1C1 Canada

Tel: 403.382.2072

Cell: 403.634.0800

Fax: 403.362.3092

ron_lowen@viterria.ca

NEW WEST MILLING

BASSANO, ALBERTA

PH: 403-641-2200 FAX: 403-641-2233

EMAIL: newwestmilling@telus.net

For all of your Livestock nutritional needs.
Quality Feeds & Customer Feed Programs

Visit us on the web at:

www.newwestmilling.com



*Come
Join
us!!!*

BAD LANDS ANGUS BULL SALE

APRIL 14, 2011 - 1:00 P.M.

SOUTHERN ALBERTA LIVESTOCK EXCHANGE

FORT MACLEOD, ALBERTA

Red & Black Angus Yearling & 2 Year Old Bulls!!!

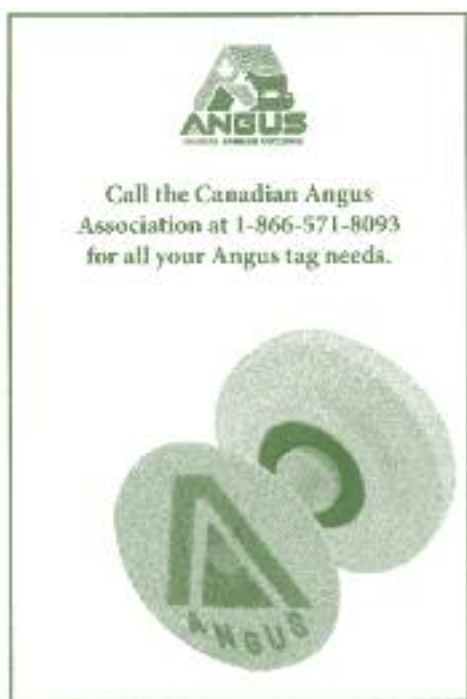


Yup, *EVERY* calf on the place gets weighed!

TAG 'EM GREEN THIS SPRING!!

IS THERE ANYTHING YOU CAN DO TO INCREASE
YOUR BOTTOM LINE THIS YEAR WITHOUT ADDING
STRESS & COST TO YOUR OPERATION?

YES, THERE IS!!



**BREED 'EM RED OR BLACK
AND TAG 'EM GREEN!**

Downloadable Catalogue Online in Full Color at:
www.coyotepub.com/badlandsangus

TERMS & CONDITIONS

TERMS - TERMS OF THIS SALE ARE CASH OR CHEQUE PAYABLE IN CANADIAN FUNDS. THE RIGHT TO PROPERTY SHALL NOT PASS UNTIL AFTER SETTLEMENT HAS BEEN MADE. ALL SETTLEMENTS MUST BE MADE WITH THE CLERKS OF THE SALE BEFORE CATTLE WILL BE RELEASED.

BIDS - EVERY ANIMAL ENTERING THE RING WILL BE SOLD TO THE HIGHEST BIDDER; AUCTIONEER'S DECISION WILL BE FINAL.

PURCHASERS RISK - EACH ANIMAL BECOMES THE RISK OF THE PURCHASER AS SOON AS SOLD. INSURANCE WILL BE AVAILABLE SALE DAY.

CATTLE INSPECTION - ALL CATTLE WILL CARRY IDENTIFICATION TAGS CORRESPONDING TO SALE LOT NUMBERS. THEY ALSO WILL HAVE R.F.I.D. TAGS.

ANNOUNCEMENTS - ERRORS OR OMMISIONS IN THE CATALOG WILL BE ANNOUNCED BEFORE SALE AND ANY CORRECTIONS WILL TAKE PRECIDENCE OVER PRINTED MATTER IN THE CATALOG.

BREEDING GUARANTEE - ALL CATTLE ARE SOUND AND RIGHT AND SELL WITH **"RESPONSIBLE BREEDER GUARANTEE AND SATISFACTION"**. ALL BULLS WILL BE SEMEN TESTED PRIOR TO SALE. IN THE EVENT OF AN UNLIKELY DISPUTE, THE REGULAR TERMS AND CONDITIONS STANDARD WITH THE CANADIAN ABERDEEN ANGUS ASSOCIATION SHALL APPLY. IN ANY CASE, THE SELLER IS NOT RESPONSIBLE FOR MORE THAN WHAT THE BULL SOLD FOR AT THE AUCTION MART.

ACCIDENTS - ANY PERSON ATTENDING THE SALE DOES SO AT THEIR OWN RISK AND RECOGNIZES THAT THERE ARE INHERENT DANGERS. ALTHOUGH EVERY PRECAUTION WILL BE TAKEN TO PROTECT THE SAFETY AND COMFORT OF BUYERS, NEITHER THE SALES MANAGER, AUCTIONEER NOR ANY OWNER ASSUMES ANY RESPONSIBILITY IN THIS MATTER AND DISCLAIMS ANY LIABILITY, LEGAL OR OTHERWISE, IN THE EVENT OF AN ACCIDENT OR LOSS OF PROPERTY.

LIABILITY - PURCHASERS MUST LOOK TO THE SELLER OF ANIMAL FOR FULFILLMENT OF ALL GUARANTEES AND REPRESENTATIONS MADE HEREUNDER. SOUTHERN ALBERTA LIVESTOCK EXCHANGE ARE ACTING AS AGENTS AND ASSUME NO RESPONSIBILITY FOR REPRESENTATIONS MADE BY THE SELLER.

PHONE, MAIL OR SIGHT UNSEEN BIDS - ALL BIDS WILL BE IN COMPLETE CONFIDENCE WITH SALES STAFF LISTED OR OWNERS.


THANKS FOR THE SUPPORT!!!!

AS ALWAYS WE WANT TO THANK OUR CUSTOMERS FROM PAST BULL SALES. YOUR SUPPORT IS GREATLY APPRECIATED. WE LOOK FORWARD TO SEEING YOU AT OUR SALE. TO OUR NEW CUSTOMERS, A WARM WELCOME. WHETHER A BULL GETS BOUGHT OR NOT, WE LOOK FORWARD TO VISITING WITH ALL OF YOU AFTER THE SALE. RICK IRWIN'S STEAK SUPPER IS ALWAYS A BIG HIT!!!

CHAD, SUE & DAN

BAD LANDS ANGUS

BOX 149, PATRICIA
ALBERTA T0J 2K0



Cattle "HooDoo"
Stand the Test of
Time

BAD LANDS ANGUS

Red & Black Angus Bull Sale

April 14 2011 • Fort Macleod, Alberta
@ Southern Alberta Livestock Exchange

with guest consignor Hoo Doo Angus