

# Atlasta Angus

## 7<sup>th</sup> Annual Bull Sale

### & Seriously Black Select Female Sale

*Saturday*

**December 8**  
**2012**

*At the Farm - Sylvan Lake, Alberta*



# *Schedule of Events*

## **FRIDAY, DECEMBER 7**

Afternoon - Cattle Viewing  
Social Evening to Follow

## **SATURDAY, DECEMBER 8**

*Join us for a pre-Christmas Lunch*

**1 PM**

**Seriously Black Select Female Sale**

*immediately followed by the*

**7th Annual**

**ATLASTA ANGUS BULL SALE**



# Atlasta Angus

## 7<sup>th</sup> Annual Bull Sale

86 Angus  
Bulls & 44  
Females Sell

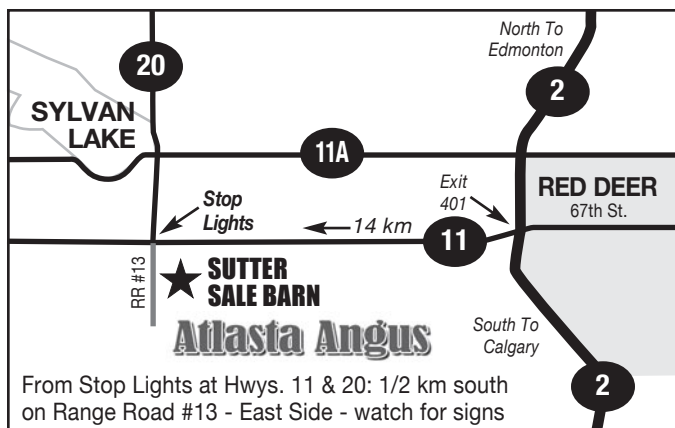
SATURDAY, DECEMBER 8, 2012

At the Farm, Sylvan Lake, Alberta

**Seriously Black Select Female Sale**

STARTS AT 1 PM to be followed immediately by the BULL SALE

### DIRECTIONS TO ATLASTA ANGUS



### SALE DAY PHONES

Doug: 403-350-8541

Brian: 403-505-7073

### HOTEL HEADQUARTERS COMFORT INN & SUITES

13 Beju Industrial Drive, Sylvan Lake, AB T4S 1J4

PH: 403-887-7884

Be sure to ask for the Atlasta/Seriously Black Room Rate

Other Options

#### COMFORT INN & SUITES

6846 66th St., Red Deer, Alberta T4P 3T5 PH: 403-348-0025

#### BLACK KNIGHT INN

PH: 403-343-6666

# Atlasta Angus

BRIAN & JUDY SUTTER  
& FAMILY

Sylvan Lake, Alberta

Ph/Fax: 403-887-4147 Cell: 403-505-7073

**TERMS ON YEARLING BULLS**  
50% Down - 50% Feb. 15  
See details page 2

### AUCTIONEER:

Don Raffan 250-546-9420; Cell: 250-558-6789

### SALE STAFF:

Mark Stock 403-357-8104 - Ringman  
Ryan Dorran 403-507-6483 - Ringman  
Peter Raffan 250-260-0758

### BUYERS REPRESENTATIVES:

Danny Daines Cell: 403-391-0580  
Work: 403-227-3166 Home: 403-227-1075  
Kyle Daines 403-598-2360

P&H Bull Marketing - Duane Parsonage  
Cell: 403-304-0661 Home: 403-227-2348

Peter Raffan Cell: 250-260-0758 Office: 250-546-9420  
Don Raffan Cell: 250-558-6789 Office: 250-546-9420  
Maury Grant Cell: 250-558-9099 Home: 250-503-5535

Clayton Cole 403-845-4042  
Bobbie Miller Jr. 403-358-1393  
Bob Miller Sr. 250-819-0858  
Dan Steen 306-361-6154  
Colin McNiven 403-793-1699

### SPECIAL REPRESENTATIVES:

Rob Smith, CEO, Canadian Angus Association  
Brian Good - Director, Canadian Angus Association Field Services  
Gary Latimer, President, Canadian Angus Association  
Dave Callaway, Angus World 403-549-2234

PHOTOS BY GRANT ROLSTON

SALE MANAGED BY

*DjH*  
**Douglas J. Henderson  
& Associates Ltd.**

Doug & Linda Henderson

P.O. Box 5900, Lacombe, Alberta T4L 1X4

Phone: (403) 782-3888 Fax: (403) 782-3849 Cell: (403) 350-8541  
email: djhenderson@platinum.ca website: www.hendersoncattle.com



## *Welcome from Atlasta!*

It is our pleasure to welcome you to the 7th Annual Atlasta Bull Sale and Seriously Black Select Female Sale.

The cattle industry seems to constantly test us with different challenges but for the most part, this past year has been a good one. Cow numbers are down, but the need for top quality Angus beef on both sides of the border has risen dramatically. Performance and pounds combined with easy fleshing ability in both our bulls and weaning weights are unquestioned priorities but our customers are becoming more aware of the importance of strong carcass values in their cattle. Producers are finally starting to get rewarded 1 – 3 cents a lb. for top quality finished cattle. For 30 years I've paid strict attention to these traits and values and implemented them in our cowherd and with every herd sire and A.I. bull used at Atlasta. It's rewarding in the fall when customers call and are pleased with their calf sales. To summarize what two great old cattlemen and friends, Louie Latimer and Gordon Parsonage used to say, if you don't respect your customers needs and values and nickel and dime on your bulls, then they'll get nickel and dimes when they sell their calves!

This year's sale offering included seventy plus yearling bulls born between January 1st and March plus twelve coming two year old bulls. We have also selected twenty-six of our very best bred heifers to be sold in thirteen pairs. You choose one and the other stays in our herd. Two of the very best from each sire used is represented.

We are very proud to have Jack and Barb Hart, Brookmore Farms provide eight top end bred heifers to our sale. Bryan and Annette Latimer, Remital West is also bringing ten quality top end heifer calves to our offering.

To all our past and present customers and both commercial and purebred breeders, I hope this selection of cattle will fulfill your needs. Please feel free to call or stop by the farm prior to sale day. Stop by for viewing and hospitality, Friday, December 7th or we look forward to seeing you sale day.

Brian and Judy Sutter  
Atlasta Angus



*Brian Owen & Saige - Judy & Summer*



**WE WILL WINTER YEARLING BULLS TO FEBRUARY 15**

***50% Down Sale Day - 50% February 15, 2013***

**\$100 OFF YEARLING BULLS  
TAKEN RIGHT AFTER THE SALE**

Buyer must insure all bulls left at Atlasta  
**\$2.50 per day after February 15**

**COMING TWO YEAR OLD BULLS & FEMALES TO GO RIGHT AFTER THE SALE**

**SATISFACTION GUARANTEED**

with our Sight Unseen Purchase Plan - Call Brian or Doug for Details

DjH

## Welcome to the 7th Annual Atlasta Bull Sale and Seriously Black Select Female Sale

Another year has rolled around and the Atlasta bulls look better than ever. Brian is very excited about this calf crop, his Atlasta breeding program is really coming together, nobody in the Angus business works harder than Brian Sutter, his goals are always set high and he works hard and stays extremely focused to achieve them.

Brian is very proud of his cowherd and rightfully so, he has achieved in breeding one of the top cowherds in the nation. Brian understands the great old breeding and continually improves on it.

The 2012 bulls really weighed up well, this herd has lots of milk and the weaning weights support that, there is built in performance and fertility in these young bulls. These are cattle that work very well, lots of performance easy calving, strong maternal traits and easy fleshing.

Remember Brian will winter the yearling bulls until February 15, 2013. 50% payment sale day and 50% February 15, 2013. The two-year-old bulls are to be picked up after the sale along with the females and need to be paid for sale day.

Again Brian is offering the choice of the top twenty-six bred heifers from the Atlasta program, you get to choose from the best at Atlasta this year, they are bred to some of the great proven and great young bulls of the breed.

Brian and Judy are also offering the exciting choice of any heifer calf in the 2013 Atlasta calf crop.

Brookmore Angus, Jack and Barb Hart are again bringing eight right off the top and selling them A.I.'d to the breed's great sires. The Brookmore females have proven time and time again that they have the ability to produce with the best of the breed.

Remitall West, Bryan and Annette Latimer and family are involved this year bringing ten of their very top heifer calves. These calves would make great show heifers, or brood cows.

Come early, look over the bulls and females Friday afternoon, enjoy the great hospitality Friday evening and take in the sale Saturday, enjoy Judy's famous pre-Christmas smoked turkey and enjoy more fun and fellowship.

If Brian, Judy, the Seriously Black consignors, Jack and Barb Hart, and Bryan and Annette Latimer, any of the sale staff or Linda and myself can be of assistance in anyway please give us a call.

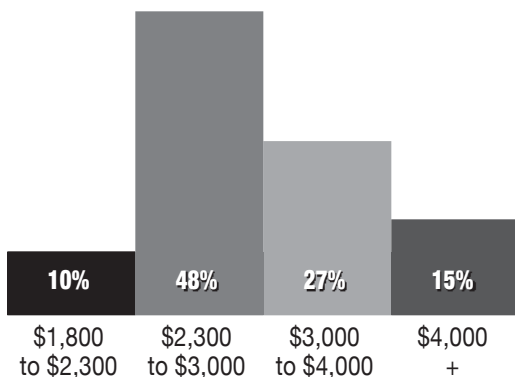
Hope to see you at this excellent fun filled Angus event.

Yours truly,  
Doug Henderson

**Douglas J. Henderson & Associates Ltd.**

P.O. Box 5900, Lacombe, Alberta T4L 1X4 Doug & Linda Henderson Phone: (403) 782-3888 Fax: (403) 782-3849 Cell: (403) 350-8541

### How the bulls have sold the last 5 years



Good genetics are derived from studying pedigrees. The return performance you get is priceless. And when you back up your program with real hide off carcass data, there is no guessing at what you have achieved in your herd. Add to this Atlasta's hard work ethic and you have the makings of a flawless herd with strong carcass - building sires and dams.

Previous cow carcass data proved the strong genetic make-up for marbling. Thank you to Atlasta Angus from the industry side for your continued dedication to improving meat quality and eating experience at the foundation of primary meat production.

Fred W. Taylor, Taylor Made Research





*Lot 1*

**Atlasta  
Final Answer  
209T-1Z**



Dam of Lot 1

NOBLE ACRES FLORA 60N

**1 ATLASTA FINAL ANSWER 209T-1Z**

MALE JBS 1Z 1685854 JANUARY 01 2012

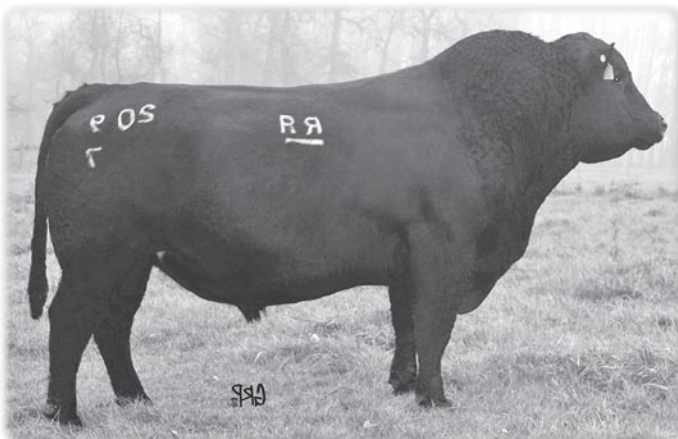
S A V FINAL ANSWER 0035 AMF CAF NHF  
**REMINGTON FINAL ANSWER 209T 1419050**  
 BOTANY ANGUS ELLEN 14G

SITZ TRAVELER 8180 AMF CAF NHF  
 S A V EMULOUS 8145 CAF  
 N BAR EMULATION EXT AMF CAF NHF  
 BOTANY ANGUS ELLEN 28B

PINE DRIVE BIG SKY AMF CAF NHF  
**NOBLE ACRES FLORA 60N 1156753**  
 NOBLE ACRES FLORA 1H

LE MAR EILEENMERE LAD 549  
 BENLOCK BLACKCAP 108K  
 G D A R TRAVELER 71 AMF CAF NHF  
 NOBLE ACRES FLORA 37E

ACTUAL BW	ADJ. 205D	EPDS			
		BW	WW	YW	MILK
90	779	+4.8 P+	+54 P+	+87 P+	+18 P



**REMINGTON FINAL ANSWER 209T**

EPDs: BW: +3.5 WW: +60 YW: +99 Milk: +15 TM: +45 SC: +0.58 CE: +3.0 MCE: +6.0

**2 ATLASTA FINAL ANSWER 209T-22Z**

MALE JBS 22Z 1685861 JANUARY 08 2012

S A V FINAL ANSWER 0035 AMF CAF NHF  
**REMINGTON FINAL ANSWER 209T 1419050**  
 BOTANY ANGUS ELLEN 14G

SITZ TRAVELER 8180 AMF CAF NHF  
 S A V EMULOUS 8145 CAF  
 N BAR EMULATION EXT AMF CAF NHF  
 BOTANY ANGUS ELLEN 28B

DMM STOCKMAN 106J  
**ATLASTA ELLEN ERICA 62N 1165260**  
 ATLASTA ELLEN 2H

TC STOCKMAN 365  
 DMM MISS ESSENCE 22B  
 ALSIKE ACRES EX NITRO BLAST 3F  
 ATLASTA REBA 6'96

ACTUAL BW	ADJ. 205D	EPDS			
		BW	WW	YW	MILK
86	789	+4.1 P+	+47 P+	+83 P+	+21 P



LOT 2 - ATLASTA FINAL ANSWER 209T-22Z

**Atlasta Angus**



### 3 ATLASTA FINAL ANSWER 209T-98Z

MALE JBS 98Z 1685883 JANUARY 22 2012

S A V FINAL ANSWER 0035 AMF CAF NHF  
**REMINGTON FINAL ANSWER 209T 1419050**  
 BOTANY ANGUS ELLEN 14G

SITZ TRAVELER 8180 AMF CAF NHF  
 S A V EMULOUS 8145 CAF  
 N BAR EMULATION EXT AMF CAF NHF  
 BOTANY ANGUS ELLEN 28B

DMM STOCKMAN 106J  
**ATLASTA ERICA 50N 1153329**  
 MLA ERICA 6'94

TC STOCKMAN 365  
 DMM MISS ESSENCE 22B  
 G D A R WHAM 021 AMF CAF NHF  
 MLA ERICA 4Y

ACTUAL BW	ADJ. 205D	EPDS			
		BW	WW	YW	MILK
90	691	+3.4 P+	+38 P+	+66 P+	+20 P



LOT 3 - ATLASTA FINAL ANSWER 209T-98Z

### 4 ATLASTA FINAL ANSWER 209T-27Z

MALE JBS 27Z 1685862 JANUARY 09 2012

S A V FINAL ANSWER 0035 AMF CAF NHF  
**REMINGTON FINAL ANSWER 209T 1419050**  
 BOTANY ANGUS ELLEN 14G

SITZ TRAVELER 8180 AMF CAF NHF  
 S A V EMULOUS 8145 CAF  
 N BAR EMULATION EXT AMF CAF NHF  
 BOTANY ANGUS ELLEN 28B

ATLASTA BATTLE CRY RAMMER 45L  
**ATLASTA BLACKCAP 58N 1168145**  
 MLA BLACKCAP 20'91

O G L BATTLE CRY 427 428  
 MLA ELLEN ERICA 4'86  
 ARGWEN ROCKY 15Y  
 MLA BLACKCAP 7'86

ACTUAL BW	ADJ. 205D	EPDS			
		BW	WW	YW	MILK
90	718	+4.0 P+	+41 P+	+68 P+	+14 P



LOT 4 - ATLASTA FINAL ANSWER 209T-27Z

### 5 ATLASTA FINAL ANSWER 209T-3Z

MALE JBS 3Z 1685856 JANUARY 03 2012

S A V FINAL ANSWER 0035 AMF CAF NHF  
**REMINGTON FINAL ANSWER 209T 1419050**  
 BOTANY ANGUS ELLEN 14G

SITZ TRAVELER 8180 AMF CAF NHF  
 S A V EMULOUS 8145 CAF  
 N BAR EMULATION EXT AMF CAF NHF  
 BOTANY ANGUS ELLEN 28B

DMM STOCKMAN 106J  
**ATLASTA BARBARA 84N 1153320**  
 MLA BARBARA 14'93

TC STOCKMAN 365  
 DMM MISS ESSENCE 22B  
 GET-A-LONG ALAMO 132  
 MLA BARBARA 34'88

ACTUAL BW	ADJ. 205D	EPDS			
		BW	WW	YW	MILK
85	628	+2.7 P+	+39 P+	+69 P+	+15 P



LOT 5 - ATLASTA FINAL ANSWER 209T-3Z

**Add Value to Your Angus**



For Angus tags & info contact:  
 Canadian Angus Association

**1-866-571-8093**

or visit [www.cdnangus.ca](http://www.cdnangus.ca)



**Atlasta Angus**



*Lot 6*

**Atlasta  
Net Worth  
69Z**



Dam of Lot 6

ATLASTA BLACKCAP 114M

**6**

**ATLASTA NET WORTH 69Z**

MALE JBS 69Z 1685873 JANUARY 15 2012

S A V 8180 TRAVELER 004 DMF DWF AMF CAF NHF  
**S A V NET WORTH 4200 AMF CAF NHF 1309743**  
 S A V MAY 2410

SITZ TRAVELER 8180 AMF CAF NHF  
 BOYD FOREVER LADY 8003  
 S A F 598 BANDO 5175 AMF CAC  
 S A V MAY 6269

SVF SIEBRINGS FOREVER RUSS AMF CAF NHF  
**ATLASTA BLACKCAP 114M 1180951**  
 MLA BLACKCAP 6'93

GDAR SVF RUSS 184B  
 GDAR SVF FOREVER LADY 214D  
 GET-A-LONG ALAMO 132  
 MLA BLACKCAP 4'90

ACTUAL BW	ADJ. 205D	EPDS			
		BW	WW	YW	MILK
93	734	+4.7 P+	+46 P+	+86 P+	+26 P

**7**

**ATLASTA NET WORTH 24Z**

MALE JBS 24Z 1686021 JANUARY 09 2012

S A V 8180 TRAVELER 004 DMF DWF AMF CAF NHF  
**S A V NET WORTH 4200 AMF CAF NHF 1309743**  
 S A V MAY 2410

SITZ TRAVELER 8180 AMF CAF NHF  
 BOYD FOREVER LADY 8003  
 S A F 598 BANDO 5175 AMF CAC  
 S A V MAY 6269

CONNELLY DATELINE  
**ATLASTA BLACKCAP 1R 1276742**  
 ATLASTA BLACKCAP 58N

D H D TRAVELER 6807 AMF NHF  
 EILA EILA OF CONANGA AMF  
 ATLASTA BATTLE CRY RAMMER 45L  
 MLA BLACKCAP 20'91

ACTUAL BW	ADJ. 205D	EPDS			
		BW	WW	YW	MILK
92	776	+3.8 P+	+48 P+	+87 P+	+22 P



**S A V NET WORTH 4200**

EPDs: BW: +4.6 WW: +59 YW: +110 Milk: +29 TM: +58 SC: +0.75 CE: +4.0 MCE: +9.0



LOT 7 - ATLASTA NET WORTH 24Z

**Atlasta Angus**



**8****ATLASTA NET WORTH 57Z**

MALE JBS 57Z 1685871 JANUARY 14 2012

S A V 8180 TRAVELER 004 DMF DWF AMF CAF NHF  
**S A V NET WORTH 4200 AMF CAF NHF 1309743**  
 S A V MAY 2410

SITZ TRAVELER 8180 AMF CAF NHF  
 BOYD FOREVER LADY 8003  
 S A F 598 BANDO 5175 AMF CAC  
 S A V MAY 6269

G T MAXIMUM AMF CAF NHF  
**ATLASTA MAXI GAL 116M 1169366**  
 MLA BUFFALO GAL 55'97

SCOTCH CAP AMF CAF NHF  
 GT MISS TRAVELER 58  
 MLA KOCHIESE 55E  
 MLA WENDY 7'89

ACTUAL BW	ADJ. 205D	EPDS			
		BW	WW	YW	MILK
92	705	+3.8 P+	+43 P+	+81 P+	+24 P



LOT 8 - ATLASTA NET WORTH 57Z

**9****ATLASTA NET WORTH 13Z**

MALE JBS 13Z 1685858 JANUARY 07 2012

S A V 8180 TRAVELER 004 DMF DWF AMF CAF NHF  
**S A V NET WORTH 4200 AMF CAF NHF 1309743**  
 S A V MAY 2410

SITZ TRAVELER 8180 AMF CAF NHF  
 BOYD FOREVER LADY 8003  
 S A F 598 BANDO 5175 AMF CAC  
 S A V MAY 6269

G D A R OSCAR 711 AMF NHF  
**ATLASTA WENDY JILL 125M 1131065**  
 MLA WENDY JILL 2F'96

BALDRIDGE OSCAR  
 L T FOREVER LADY 395 G D A R  
 WHS PLAYBOY 5B  
 MLA WENDY JILL 30'87

ACTUAL BW	ADJ. 205D	EPDS			
		BW	WW	YW	MILK
84	670	+2.7 P+	+35 P+	+67 P+	+22 P



LOT 9 - ATLASTA NET WORTH 13Z

**10****ATLASTA HEAVY HITTER 44Z**

MALE JBS 44Z 1686036 JANUARY 12 2012

S A V 8180 TRAVELER 004 DMF DWF AMF CAF NHF  
**S A V HEAVY HITTER 6347 AMF CAF NHF 1493580**  
 S A V BESSIE HEIRESS 1184 CAC

SITZ TRAVELER 8180 AMF CAF NHF  
 BOYD FOREVER LADY 8003  
 S A F 598 BANDO 5175 AMF CAC  
 S A V BESSIE HEIRESS 8067

CONNELLY TIMELINE CAF  
**BB ELSIEMERE 34S 1362469**  
 SITZ ELSIEMERE 3173

CONNELLY DATELINE  
 ENCHANTS FORTUNE CONANGA 6127  
 SITZ RAINMAKER 7541  
 SITZ ELSIEMERE 2471

ACTUAL BW	ADJ. 205D	EPDS			
		BW	WW	YW	MILK
86	704	+3.9 P+	+49 P+	+90 P+	+17 P



LOT 10 - ATLASTA HEAVY HITTER 44Z

**S A V HEAVY HITTER 6347**

EPDs: BW: +3.3 WW: +50 YW: +89 Milk: +31 TM: +56 SC: +1.51 CE: +2.0 MCE: +8.0

**Atlasta Angus**



**S A V FINAL ANSWER 0035**

EPDs: BW: -1.0 WW: +61 YW: +105 Milk: +25 TM: +56 SC: +1.12 CE: +12.0 MCE: +13.0



**LOT 13 - ATLASTA RIGHT TIME 29Z**



**LEACHMAN RIGHT TIME**

EPDs: BW: +2.1 WW: +42 YW: +79 Milk: +19 TM: +40 SC: +0.28 CE: +4.0 MCE: +9.0

**11 ATLASTA FINAL ANSWER 36Z**

MALE JBS 36Z 1686026 JANUARY 10 2012

SITZ TRAVELER 8180 AMF CAF NHF  
**S A V FINAL ANSWER 0035 AMF CAF NHF 1061938**  
 S A V EMULOUS 8145 CAF

G D A R TRAVELER 71 AMF CAF NHF  
 SITZ EVERELDA ENTENSE 1137  
 BON VIEW BANDO 598 AMF CAC  
 S A V SKY EMULOUS 2124

BON VIEW NEW DESIGN 1407 AMF CAF NHF  
**CHICO BEAUTY LASS 40S 1324039**  
 CHICO BEAUTY LASS 46F

B/R NEW DESIGN 036 AMF CAF NHF  
 BON VIEW PRIDE 664  
 V D A R NEW TREND 315 AMF CAF NHF  
 LLB BEAUTY LASS 67B

ACTUAL BW	ADJ. 205D	EPDS			
		BW	WW	YW	MILK
90	750	+2.1 P+	+44 P+	+83 P+	+25 P

**12 ATLASTA NATIONAL MERIT 71Z**

MALE JBS 71Z 1686055 JANUARY 16 2012

L F NEW TREND 4100 AMF CAF NHF  
**W V F HB ATLANTIC NATL MERIT 1140075**  
 L L A GEORGINA 419

V D A R NEW TREND 784  
 LAZY FOUR LUCY 003  
 G A R SLEEP EASY 1009 AMF CAF NHF  
 LYONS GEORGINA 2165

SITZ ALLIANCE 6595 DMF AMF CAF NHF  
**BB BLACKBIRD 39S 1362470**  
 BJ BLACKBIRD 8D

SITZ TRAVELER 8180 AMF CAF NHF  
 SITZ BARBARAMERE JET 2698  
 PROSPERITY ACCLAIM 158  
 BJ BLACKBIRD 1B

ACTUAL BW	ADJ. 205D	EPDS			
		BW	WW	YW	MILK
86	722	+3.3 P+	+39 P+	+67 P+	+23 P

**13 ATLASTA RIGHT TIME 29Z**

MALE JBS 29Z 1685863 TWIN JANUARY 09 2012

N BAR EMULATION EXT AMF CAF NHF  
**LEACHMAN RIGHT TIME AMF 779510**  
 LEACHMAN ERICA 0025

EMULATION N BAR 5522  
 N BAR PRIMROSE 2424  
 TEHAMA BANDO 155 AMF CAF NHF  
 LEACHMAN ERICA 8058

SITZ TRAVELER 8180 AMF CAF NHF  
**BB BARBARA PERFECTION 14N 1251139**  
 SITZ BARBARA PERFECTION 770

G D A R TRAVELER 71 AMF CAF NHF  
 SITZ EVERELDA ENTENSE 1137  
 TRAVELER 124 G D A R  
 SITZ BARBARA PERFECTION 1018

ACTUAL BW	ADJ. 205D	EPDS			
		BW	WW	YW	MILK
70	739	+1.2 P	+38 P	+73 P	+20 P

**14 ATLASTA RIGHT TIME 30Z**

MALE JBS 30Z 1685864 TWIN JANUARY 09 2012

N BAR EMULATION EXT AMF CAF NHF  
**LEACHMAN RIGHT TIME AMF 779510**  
 LEACHMAN ERICA 0025

EMULATION N BAR 5522  
 N BAR PRIMROSE 2424  
 TEHAMA BANDO 155 AMF CAF NHF  
 LEACHMAN ERICA 8058

SITZ TRAVELER 8180 AMF CAF NHF  
**BB BARBARA PERFECTION 14N 1251139**  
 SITZ BARBARA PERFECTION 770

G D A R TRAVELER 71 AMF CAF NHF  
 SITZ EVERELDA ENTENSE 1137  
 TRAVELER 124 G D A R  
 SITZ BARBARA PERFECTION 1018

ACTUAL BW	ADJ. 205D	EPDS			
		BW	WW	YW	MILK
68	647	+1.2 P	+38 P	+73 P	+20 P



Dam of Lots 13 & 14

**BB BARBARA PERFECTION 14N**

**Atlasta Angus**





**BB BARBARA PERFECTION 1075**

*Dam of Lot 15*



**LOT 15 - ATLASTA RIGHT TIME 60Z**

**15**

**ATLASTA RIGHT TIME 60Z**

MALE JBS 60Z 1686047 JANUARY 15 2012

N BAR EMULATION EXT AMF CAF NHF  
**LEACHMAN RIGHT TIME AMF 779510**  
 LEACHMAN ERICA 0025

EMULATION N BAR 5522  
 N BAR PRIMROSE 2424  
 TEHAMA BANDO 155 AMF CAF NHF  
 LEACHMAN ERICA 8058

SITZ TRAVELER 8180 AMF CAF NHF  
**BB BARBARA PERFECTION 1075 1415168**  
 SITZ BARBARA PERFECTION 770

G D A R TRAVELER 71 AMF CAF NHF  
 SITZ EVERELDA ENTENSE 1137  
 TRAVELER 124 G D A R  
 SITZ BARBARA PERFECTION 1018

ACTUAL BW	ADJ. 205D	EPDS			
		BW	WW	YW	MILK
85	707	+1.6 P+	+38 P+	+72 P+	+20 P

**16**

**ATLASTA CJ 74Z**

MALE JBS 74Z 1686056 JANUARY 16 2012

JUSTAMERE 1118 CASH 665P  
**REMITALL SUPEREVENT 532S 1338191**  
 KBJ ANNIE 829N

EXAR BIG TIMBER 1118  
 REMITALL KEEPSAKE 143L  
 LLB TRAVELER 297K  
 KBJ ANNIE 438L

S A V NET WORTH 4200 AMF CAF NHF  
**BYMAN'S MISS GOLDETTTE 3T 1415199**  
 BYMAN'S MISS FULLBACK 3P

S A V 8180 TRAVELER 004 DMF DWF AMF CAF NHF  
 S A V MAY 2410  
 RITO 9FB3 OF 5H11 FULLBACK AMF CAF NHF  
 TOMBET MISS VONDA LORI 3L

ACTUAL BW	ADJ. 205D	EPDS			
		BW	WW	YW	MILK
92	732	+5.4 P+	+55 P+	+96 P+	+23 P



**LOT 17 - ATLASTA CJ 55Z**

**17**

**ATLASTA CJ 55Z**

MALE JBS 55Z 1686044 JANUARY 14 2012

JUSTAMERE 1118 CASH 665P  
**REMITALL SUPEREVENT 532S 1338191**  
 KBJ ANNIE 829N

EXAR BIG TIMBER 1118  
 REMITALL KEEPSAKE 143L  
 LLB TRAVELER 297K  
 KBJ ANNIE 438L

TC FREEDOM 104 AMF CAF NHF  
**ATLASTA BLACKCAP FREEDOM 51T 1405373**  
 ATLASTA BLACKCAP 3L

CONNELLY FOREFRONT AMF CAF NHF  
 T C RUBY 9095 CAF  
 G D A R OSCAR 711 AMF NHF  
 MLA BLACKCAP 20'91

ACTUAL BW	ADJ. 205D	EPDS			
		BW	WW	YW	MILK
87	739	+5.1 P+	+50 P+	+87 P+	+20 P



**LOT 18 - ATLASTA CJ 20Z**

**18**

**ATLASTA CJ 20Z**

MALE JBS 20Z 1704827 JANUARY 8 2012

JUSTAMERE 1118 CASH 665P  
**REMITALL SUPEREVENT 532S 1338191**  
 KBJ ANNIE 829N

EXAR BIG TIMBER 1118  
 REMITALL KEEPSAKE 143L  
 LLB TRAVELER 297K  
 KBJ ANNIE 438L

HF COMMANDER 60P  
**ATLASTA BRIAR 45T 1704826**  
 BARNETT BRIAR 15P

TC FREEDOM 104 AMF CAF NHF  
 DURALTA 14C ECHO 32E  
 TC ADVANTAGE AMF CAF NHF  
 BARNETT BRIAR 15M

ACTUAL BW	ADJ. 205D	EPD ESTIMATE			
		BW	WW	YW	MILK
92	715	+4.2	+39	+64	+13

**Atlasta Angus**



**LVA 17M ASCENT 4X**

EPDs: BW: +4.3 WW: +50 YW: +89 Milk: +16 TM: +41 CE: +1.0 MCE: +7.0

**19**

**ATLASTA GRIDMAKER 4X-113Z**

MALE JBS 113Z 1686083 JANUARY 30 2012

G A R GRID MAKER AMF CAF NHF  
**LVA 17M ASCENT 4X 1543665**  
 NOBLE ACRES KARAMA 17M

G D A R TRAVELER 044 AMF CAF NHF  
 G A R PRECISION 2536 AMC NHF  
 NOBLE LINE RAIN BOY 1K  
 WAVY KARAMA 17K

REMITALL MOONSHINE 113M  
**ATLASTA BLACKBIRD 225U 1473663**  
 BJ BLACKBIRD 8D

VERMILION DATELINE 7078 AMF CAF NHF  
 LLB COUNTESS 635H  
 PROSPERITY ACCLAIM 158  
 BJ BLACKBIRD 1B

ACTUAL BW	ADJ. 205D	EPDS			
		BW	WW	YW	MILK
92	710	+5.2 P+	+43 P+	+75 P+	+14 P

**20**

**ATLASTA GRIDMAKER 4X-25Z**

MALE JBS 25Z 1686022 JANUARY 09 2012

G A R GRID MAKER AMF CAF NHF  
**LVA 17M ASCENT 4X 1543665**  
 NOBLE ACRES KARAMA 17M

G D A R TRAVELER 044 AMF CAF NHF  
 G A R PRECISION 2536 AMC NHF  
 NOBLE LINE RAIN BOY 1K  
 WAVY KARAMA 17K

REMITALL SUPEREVENT 532S  
**ATLASTA PATRICIA 155U 1473813**  
 ATLASTA PATRICIA 18R

JUSTAMERE 1118 CASH 665P  
 KBJ ANNIE 829N  
 VERMILION DATELINE 7078 AMF CAF NHF  
 MLA PATRICIA 29'94

ACTUAL BW	ADJ. 205D	EPDS			
		BW	WW	YW	MILK
85	674	+2.9 P+	+46 P+	+82 P+	+17 P



**LOT 21 - ATLASTA 120X-134Z**

**21**

**ATLASTA 120X-134Z**

MALE JBS 134Z 1686096 FEBRUARY 06 2012

BROOKMORE NETWORK 112U  
**ATLASTA RUSS 120X 1579639**  
 ATLASTA BLACKCAP 114M

S A V NET WORTH 4200 AMF CAF NHF  
 BROOKMORE RUBY 20K  
 SVF SIEBRINGS FOREVER RUSS AMF CAF NHF  
 MLA BLACKCAP 6'93

PEAK DOT FAME 414M  
**BB EMMA E 5R 1297925**  
 SITZ EMMA E 3003

S A R FAME 2089  
 DUCHESS OF PEAK DOT 642K  
 SITZ RITO 7491  
 SITZ EMMA E 2517

ACTUAL BW	ADJ. 205D	EPDS			
		BW	WW	YW	MILK
93	714	+4.9 P+	+46 P+	+81 P+	+20 P



**ATLASTA RUSS 120X**

EPDs: BW: +4.9 WW: +53 YW: +100 Milk: +21 TM: +48 CE: -1.0 MCE: +1.0  
 Co-owned with Swartz Angus, Colin & Wendy Swarbrick

# Creating Value for Angus Tagged Cattle

**www.rancherendorsed.com**

**Atlasta Angus**



# 22

## ATLASTA RUSS 87Z

MALE JBS 87Z 1685878 JANUARY 20 2012

SVF SIEBRINGS FOREVER RUSS AMF CAF NHF  
ATLASTA FOREVER RUSS 37S 1341988  
ATLASTA ERICA 34H

GDAR SVF RUSS 184B  
GDAR SVF FOREVER LADY 214D  
MACC INDIAN NATION 66F  
MLA ELLEN ERICA 34'95

TC ADVANTAGE AMF CAF NHF  
BARNETT BRIAR 15P 1646694  
BARNETT BRIAR 15M

KRUGERRAND OF DONAMERE 490 AMF NHF  
TC PRIDE 2010  
CFCC 76K  
FAQ MISS BRIAR 13T 4A

ACTUAL BW	ADJ. 205D	EPDS			
		BW	WW	YW	MILK
92	765	+4.4 P+	+38 P+	+62 P+	+13 P



LOT 22 - ATLASTA RUSS 87Z

# 23

## ATLASTA RUSS 37S-56Z

MALE JBS 56Z 1685872 JANUARY 14 2012

SVF SIEBRINGS FOREVER RUSS AMF CAF NHF  
ATLASTA FOREVER RUSS 37S 1341988  
ATLASTA ERICA 34H

GDAR SVF RUSS 184B  
GDAR SVF FOREVER LADY 214D  
MACC INDIAN NATION 66F  
MLA ELLEN ERICA 34'95

PINE DRIVE BIG SKY AMF CAF NHF  
BARNETT MISS WISEGUY 9P 1282416  
MYALTA MISS WISEGUY 9C

LE MAR EILEENMERE LAD 549  
BENLOCK BLACKCAP 108K  
WILLABAR WISEGUY 22Y  
FAQ MISS BRIAR 13T 4A

ACTUAL BW	ADJ. 205D	EPDS			
		BW	WW	YW	MILK
92	769	+5.7 P+	+38 P+	+63 P+	+22 P

# 24

## ATLASTA RUSS 122Z

MALE JBS 122Z 1685887 FEBRUARY 02 2012

SVF SIEBRINGS FOREVER RUSS AMF CAF NHF  
ATLASTA FOREVER RUSS 37S 1341988  
ATLASTA ERICA 34H

GDAR SVF RUSS 184B  
GDAR SVF FOREVER LADY 214D  
MACC INDIAN NATION 66F  
MLA ELLEN ERICA 34'95

G T MAXIMUM AMF CAF NHF  
ATLASTA ERICA 25P 1236638  
ATLASTA ERICA 50H

SCOTCH CAP AMF CAF NHF  
GT MISS TRAVELER 58  
ALSIKE ACRES EX NITRO BLAST 3F  
MLA ERICA 7'90

ACTUAL BW	ADJ. 205D	EPDS			
		BW	WW	YW	MILK
90	637	+4.2 P+	+37 P+	+70 P+	+13 P



ATLASTA FOREVER RUSS 37S

EPDs: BW: +4.3 WW: +44 YW: +79 Milk: +26 TM: +48 SC: +0.40 CE: -1.0 MCE: 0.0

*Grandpa's  
Helpers*



*Owen*

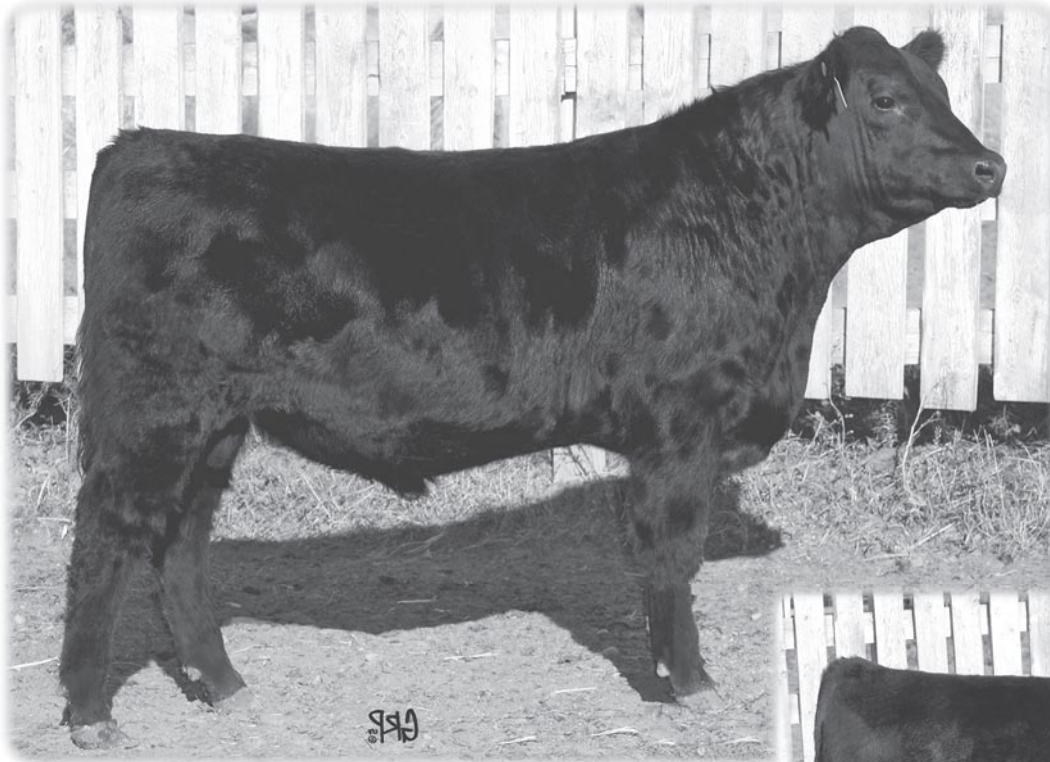


*Saige*



*Summer*

# Atlasta Angus



*Lot 25*

**Atlasta  
Cash  
44U-97Z**



LOT 26 - ATLASTA CASH 44U-154Z

**25**

**ATLASTA CASH 44U-97Z**

MALE JBS 97Z 1686069 JANUARY 22 2012

REMITALL SUPEREVENT 532S  
ATLASTA CASH 44U 1473810  
BB ANNIE 13R

JUSTAMERE 1118 CASH 665P  
KBJ ANNIE 829N  
PEAK DOT FAME 414M  
J L S ANNIE 893

SITZ ALLIANCE 6595 DMF AMF CAF NHF  
BB BARDOLIA 16S 1362476  
BARDOLIA OF PEAK DOT 413N

SITZ TRAVELER 8180 AMF CAF NHF  
SITZ BARBARAMERE JET 2698  
STEVENSON BRUNO 6371  
BARDOLIA OF PEAK DOT 627F

ACTUAL BW	ADJ. 205D	EPDS			
		BW	WW	YW	MILK
88	814	+3.4 P+	+51 P+	+90 P+	+25 P



LOT 27 - ATLASTA CASH 44U-175Z

**26**

**ATLASTA CASH 44U-154Z**

MALE JBS 154Z 1686110 FEBRUARY 14 2012

REMITALL SUPEREVENT 532S  
ATLASTA CASH 44U 1473810  
BB ANNIE 13R

JUSTAMERE 1118 CASH 665P  
KBJ ANNIE 829N  
PEAK DOT FAME 414M  
J L S ANNIE 893

SVF SIEBRINGS FOREVER RUSS AMF CAF NHF  
ATLASTA ERICA JANE 34S 1341977  
MLA ERICA JANE 52'97

GDAR SVF RUSS 184B  
GDAR SVF FOREVER LADY 214D  
MLA KOCHIESE 55E  
MLA ERICA 32'89

ACTUAL BW	ADJ. 205D	EPDS			
		BW	WW	YW	MILK
94	821	+5.6 P+	+50 P+	+89 P+	+23 P

**27**

**ATLASTA CASH 44U-175Z**

MALE JBS 175Z 1686129 MARCH 18 2012

REMITALL SUPEREVENT 532S  
ATLASTA CASH 44U 1473810  
BB ANNIE 13R

JUSTAMERE 1118 CASH 665P  
KBJ ANNIE 829N  
PEAK DOT FAME 414M  
J L S ANNIE 893

MYTTY IN FOCUS AMF CAF NHF  
BB ELSLOW 2S 1364908  
BB ELSLOW 23P

S A F FOCUS OF E R AMF CAF NHF  
MYTTY COUNTESS 906  
SITZ RAINMAKER 9422  
SITZ ELSLOW 203

ACTUAL BW	ADJ. 205D	EPDS			
		BW	WW	YW	MILK
86	918	+4.1 P+	+58 P+	+101 P+	+25 P

**Atlasta Angus**



# 28

## ATLASTA CASH 44U-168Z

MALE JBS 168Z 1686119 FEBRUARY 29 2012

REMITALL SUPEREVENT 532S  
ATLASTA CASH 44U 1473810  
BB ANNIE 13R

JUSTAMERE 1118 CASH 665P  
KBJ ANNIE 829N  
PEAK DOT FAME 414M  
J L S ANNIE 893

VERMILION DATELINE 7078 AMF CAF NHF  
ATLASTA BOOBOO 75S 1341958  
ATLASTA BOOBOO 2'96

CONNEALY DATELINE  
VERMILION BLACKBIRD 5044  
WHS PLAYBOY 5B  
MLA ELCON 32'91

ACTUAL BW	ADJ. 205D	EPDS			
		BW	WW	YW	MILK
92	845	+5.5 P+	+53 P+	+95 P+	+19 P



LOT 28 - ATLASTA CASH 44U-168Z

# 29

## ATLASTA CASH 44U-141Z

MALE JBS 141Z 1686100 FEBRUARY 09 2012

REMITALL SUPEREVENT 532S  
ATLASTA CASH 44U 1473810  
BB ANNIE 13R

JUSTAMERE 1118 CASH 665P  
KBJ ANNIE 829N  
PEAK DOT FAME 414M  
J L S ANNIE 893

G T MAXIMUM AMF CAF NHF  
ATLASTA TINA 24S 1342027  
ATLASTA DATELINE TINA 3J

SCOTCH CAP AMF CAF NHF  
GT MISS TRAVELER 58  
CONNEALY DATELINE  
ATLASTA TINA 14G

ACTUAL BW	ADJ. 205D	EPDS			
		BW	WW	YW	MILK
83	751	+2.8 P+	+46 P+	+83 P+	+17 P



ATLASTA CASH 44U

EPDs: BW: +4.7 WW: +49 YW: +85 Milk: +22 TM: +47 CE: -2.0 MCE: +4.0

# 30

## ATLASTA CASH 44U-179Z

MALE JBS 179Z 1686126 MARCH 12 2012

REMITALL SUPEREVENT 532S  
ATLASTA CASH 44U 1473810  
BB ANNIE 13R

JUSTAMERE 1118 CASH 665P  
KBJ ANNIE 829N  
PEAK DOT FAME 414M  
J L S ANNIE 893

CONNEALY TIMELINE CAF  
BB EMMA E 20S 1362467  
SITZ EMMA E 2873

CONNEALY DATELINE  
ENCHANTS FORTUNE CONANGA 6127  
LEACHMAN TWOPLY 0506  
SITZ EMMA E 4508

ACTUAL BW	ADJ. 205D	EPDS			
		BW	WW	YW	MILK
87	665	+3.9 P+	+42 P+	+72 P+	+17 P

# 31

## ATLASTA CASH 44U-88Z

MALE JBS 88U REG # PENDING JANUARY 20 2012

REMITALL SUPEREVENT 532S  
ATLASTA CASH 44U 1473810  
BB ANNIE 13R

JUSTAMERE 1118 CASH 665P  
KBJ ANNIE 829N  
PEAK DOT FAME 414M  
J L S ANNIE 893

DHD TRAVELER 6807 AMF NHF  
BB ATLASTA WENDY 61S -1417950-  
LEACHMAN WENDY 9031

QAS TRAVELER 23-4 AMF CAF NHF  
BEMINDFUL MAID D H D 0807  
LEACHMAN PARAGON  
LEACHMAN WENDY 1077

ACTUAL BW	ADJ. 205D	EPD ESTIMATE			
		BW	WW	YW	MILK
95	770	+2.9	+48	+89	+23



Bobby Miller & Scrappy

*Satisfaction Guaranteed  
with our Sight Unseen  
Purchase Plan  
Call Brian or Doug for details*

# Atlasta Angus



LOT 32 - ATLASTA HARTSWORTH 112U-155Z

## 32 ATLASTA HARTSWORTH 112U-155Z

MALE JBS 155Z 1685899 FEBRUARY 17 2012

S A V NET WORTH 4200 AMF CAF NHF  
**BROOKMORE NETWORK 112U 1441286**  
 BROOKMORE RUBY 20K

S A V 8180 TRAVELER 004 DMF DWF AMF CAF NHF  
 S A V MAY 2410  
 ALBERDA TRAVELER 416 AMF CAF NHF  
 BROOKMORE RUBY 77H

LLB O'RILEY 633F  
**ABSOLUTE ALLEGRA 12H 921025**  
 BUFFALO COULEE ALLEGRA 37B

NORTHLINE O'RILEY 94B  
 DOUBLE J FANNY 336A  
 LDR BARDOLENE 7Z  
 ANGUS ACRES ALLEGRA 223Y

ACTUAL BW	ADJ. 205D	EPDS			
		BW	WW	YW	MILK
90	764	+5.3 P+	+43 P+	+84 P+	+15 P

## 33 ATLASTA HARTSWORTH 112U-161Z

MALE JBS 161Z 1686112 FEBRUARY 22 2012

S A V NET WORTH 4200 AMF CAF NHF  
**BROOKMORE NETWORK 112U 1441286**  
 BROOKMORE RUBY 20K

S A V 8180 TRAVELER 004 DMF DWF AMF CAF NHF  
 S A V MAY 2410  
 ALBERDA TRAVELER 416 AMF CAF NHF  
 BROOKMORE RUBY 77H

CUDLOBE EXPEDITION 14N  
**ABSOLUTE ERELITE 6R 1274557**  
 ANB ERELITE 03E

STEVENSON EXPEDITION 859K  
 CUDLOBE ELINE 15J  
 HEATHAN'S BART 1B  
 CHICO ERELITE 42T

ACTUAL BW	ADJ. 205D	EPDS			
		BW	WW	YW	MILK
93	773	+4.9 P+	+46 P+	+88 P+	+17 P



LOT 33 - ATLASTA HARTSWORTH 112U-161Z

## 34 ATLASTA HARTSWORTH 112U-146Z

MALE JBS 146Z 1685895 FEBRUARY 11 2012

S A V NET WORTH 4200 AMF CAF NHF  
**BROOKMORE NETWORK 112U 1441286**  
 BROOKMORE RUBY 20K

S A V 8180 TRAVELER 004 DMF DWF AMF CAF NHF  
 S A V MAY 2410  
 ALBERDA TRAVELER 416 AMF CAF NHF  
 BROOKMORE RUBY 77H

ABSOLUTE STOCKMAN IMAGE 7K  
**ABSOLUTE 365 ALLEGRA 29N 1179402**  
 BUFFALO COULEE ALLEGRA 37B

TC STOCKMAN 365  
 HARMON BLACK LADY 7161  
 LDR BARDOLENE 7Z  
 ANGUS ACRES ALLEGRA 223Y

ACTUAL BW	ADJ. 205D	EPDS			
		BW	WW	YW	MILK
95	719	+5.9 P+	+44 P+	+83 P+	+14 P

## 35 ATLASTA HARTSWORTH 112U-43Z

MALE JBS 43Z 1685866 JANUARY 12 2012

S A V NET WORTH 4200 AMF CAF NHF  
**BROOKMORE NETWORK 112U 1441286**  
 BROOKMORE RUBY 20K

S A V 8180 TRAVELER 004 DMF DWF AMF CAF NHF  
 S A V MAY 2410  
 ALBERDA TRAVELER 416 AMF CAF NHF  
 BROOKMORE RUBY 77H

LOMA LANES CRACKER JACK 51J  
**DOUBLE AA ANNIE K 264'01 1051178**  
 DOUBLE AA ANNIE K 533'91

LOMA LANES CRACKER JACK 4F  
 DURNESS KATHLEEN 1W  
 DOUBLE AA ESTON 18'88  
 DOUBLE AA ANNIE K 645'83

ACTUAL BW	ADJ. 205D	EPDS			
		BW	WW	YW	MILK
93	620	+4.3 P+	+34 P+	+64 P+	+10 P



**BROOKMORE NETWORK 112U**

EPDs: BW: +6.6 WW: +56 YW: +115 Milk: +19 TM: +47 CE: -5.0 MCE: -1.0

## 36 ATLASTA HARTSWORTH 112U-132Z

MALE JBS 132Z 1685891 FEBRUARY 05 2012

S A V NET WORTH 4200 AMF CAF NHF  
**BROOKMORE NETWORK 112U 1441286**  
 BROOKMORE RUBY 20K

S A V 8180 TRAVELER 004 DMF DWF AMF CAF NHF  
 S A V MAY 2410  
 ALBERDA TRAVELER 416 AMF CAF NHF  
 BROOKMORE RUBY 77H

TC STOCKMAN 365  
**ATLASTA PRIDE 12K 995646**  
 MLA BARBARA 14'93

TC STOCKMAN  
 TC PRIDE 0014  
 GET-A-LONG ALAMO 132  
 MLA BARBARA 34'88

ACTUAL BW	ADJ. 205D	EPDS			
		BW	WW	YW	MILK
85	662	+4.0 P+	+37 P+	+75 P+	+16 P

# Atlasta Angus



# 37 ATLASTA RIGHT TIME 124R-171Z

MALE JBS 171Z 1686120 MARCH 02 2012

LEACHMAN RIGHT TIME AMF  
**REMINGTON RIGHT TIME 124R 1291957**  
 CRESCENT CREEK BLACKCAP 84E

N BAR EMULATION EXT AMF CAF NHF  
 LEACHMAN ERICA 0025  
 RITO 8094 PRAIRIELANE 2060 AMF  
 CRESCENT CREEK BLACKCAP 112A

SVF SIEBRINGS FOREVER RUSS AMF CAF NHF  
**ATLASTA BARBARA R 55T 1405340**  
 ATLASTA BARBARA 33H

GDAR SVF RUSS 184B  
 GDAR SVF FOREVER LADY 214D  
 MACC INDIAN NATION 66F  
 MLA BARBARA 4'95

ACTUAL BW	ADJ. 205D	EPDS			
		BW	WW	YW	MILK
86	971	+4.3 P+	+49 P+	+91 P+	+25 P



LOT 37 - ATLASTA RIGHT TIME 124R-171Z

# 38 ATLASTA RIGHT TIME 124R-92Z

MALE JBS 92Z 1686068 JANUARY 21 2012

LEACHMAN RIGHT TIME AMF  
**REMINGTON RIGHT TIME 124R 1291957**  
 CRESCENT CREEK BLACKCAP 84E

N BAR EMULATION EXT AMF CAF NHF  
 LEACHMAN ERICA 0025  
 RITO 8094 PRAIRIELANE 2060 AMF  
 CRESCENT CREEK BLACKCAP 112A

BON VIEW NEW DESIGN 878 AMF CAF NHF  
**ATLASTA BB OPERA 057T 1411448**  
 WINTERING HILLS OPERA 115P

B/R NEW DESIGN 036 AMF CAF NHF  
 BON VIEW GAMMER 85 CAC  
 RIVERCREST LAD CSP 10J  
 WHS JASMIN 44J

ACTUAL BW	ADJ. 205D	EPDS			
		BW	WW	YW	MILK
85	776	+2.4 P+	+39 P+	+72 P+	+22 P



LOT 38 - ATLASTA RIGHT TIME 124R-92Z

# 39 ATLASTA RIGHT TIME 124R-153Z

MALE JBS 153Z 1686109 FEBRUARY 13 2012

LEACHMAN RIGHT TIME AMF  
**REMINGTON RIGHT TIME 124R 1291957**  
 CRESCENT CREEK BLACKCAP 84E

N BAR EMULATION EXT AMF CAF NHF  
 LEACHMAN ERICA 0025  
 RITO 8094 PRAIRIELANE 2060 AMF  
 CRESCENT CREEK BLACKCAP 112A

SITZ TRAVELER 8180 AMF CAF NHF  
**ATLASTA BB BARBARA 055T 1415183**  
 SITZ BARBARA PERFECTION 770

G D A R TRAVELER 71 AMF CAF NHF  
 SITZ EVERELDA ENTENSE 1137  
 TRAVELER 124 G D A R  
 SITZ BARBARA PERFECTION 1018

ACTUAL BW	ADJ. 205D	EPDS			
		BW	WW	YW	MILK
82	759	+1.5 P+	+34 P+	+67 P+	+22 P



REMINGTON RIGHT TIME 124R

EPDS: BW: +2.2 WW: +29 YW: +59 Milk: +22 TM: +37 SC: +0.39 CE: -2.0 MCE: +3.0

# 40 ATLASTA RIGHT TIME 124R-126Z

MALE JBS 126Z 1686092 FEBRUARY 04 2012

LEACHMAN RIGHT TIME AMF  
**REMINGTON RIGHT TIME 124R 1291957**  
 CRESCENT CREEK BLACKCAP 84E

N BAR EMULATION EXT AMF CAF NHF  
 LEACHMAN ERICA 0025  
 RITO 8094 PRAIRIELANE 2060 AMF  
 CRESCENT CREEK BLACKCAP 112A

REMITALL MOONSHINE 113M  
**ATLASTA BLACKCAP 167T 1405357**  
 ATLASTA BLACKCAP 27J

VERMILION DATELINE 7078 AMF CAF NHF  
 LLB COUNTESS 635H  
 ALSIKE ACRES EX NITRO BLAST 3F  
 MLA BLACKCAP 20'91

ACTUAL BW	ADJ. 205D	EPDS			
		BW	WW	YW	MILK
86	722	+3.3 P+	+31 P+	+59 P+	+19 P

# Atlasta Angus



LOT 41 - ATLASTA PREDOMINANT 31W-76Z

## 41 ATLASTA PREDOMINANT 31W-76Z

MALE JBS 76Z 1686060 JANUARY 17 2012

S A V 004 PREDOMINANT 4438 AMF CAF NHF  
**ATLASTA PREDOMINANT 31W 1527926**  
 ATLASTA WENDY 35K

S A V 8180 TRAVELER 004 DMF DWF AMF CAF NHF  
 S A V EMBLYNETTE 1182  
 ALBERDA TRAVELER 416 AMF CAF NHF  
 ATLASTA WENDY 37H

ATLASTA FOREVER RUSS 25R  
**KBJ MISTY 204U 1448169**  
 KBJ MISTY 813N

SVF SIEBRINGS FOREVER RUSS AMF CAF NHF  
 ATLASTA ERICA 34H  
 LLB BATTLE CRY 97L  
 MINBURN MISTY 24K

ACTUAL BW	ADJ. 205D	EPDS			
		BW	WW	YW	MILK
86	728	+4.3 P+	+43 P+	+80 P+	+20 P

## 42 ATLASTA PREDOMINANT 31W-130Z

MALE JBS 130Z 1686094 FEBRUARY 05 2012

S A V 004 PREDOMINANT 4438 AMF CAF NHF  
**ATLASTA PREDOMINANT 31W 1527926**  
 ATLASTA WENDY 35K

S A V 8180 TRAVELER 004 DMF DWF AMF CAF NHF  
 S A V EMBLYNETTE 1182  
 ALBERDA TRAVELER 416 AMF CAF NHF  
 ATLASTA WENDY 37H

B/R NEW FRONTIER 095 AMF CAF NHF  
**ATLASTA WENDY 25U 1473661**  
 MLA WENDY 1'94

B/R NEW DESIGN 036 AMF CAF NHF  
 WHITE FENCE PRIDE H1  
 G D A R WHAM 021 AMF CAF NHF  
 MLA WENDY 20'87

ACTUAL BW	ADJ. 205D	EPDS			
		BW	WW	YW	MILK
92	741	+3.9 P+	+43 P+	+79 P+	+19 P



LOT 42 - ATLASTA PREDOMINANT 31W-130Z



LOT 43 - ATLASTA PREDOMINANT 31W-127ZZ

## 43 ATLASTA PREDOMINANT 31W-127Z

MALE JBS 127Z 1685889 FEBRUARY 04 2012

S A V 004 PREDOMINANT 4438 AMF CAF NHF  
**ATLASTA PREDOMINANT 31W 1527926**  
 ATLASTA WENDY 35K

S A V 8180 TRAVELER 004 DMF DWF AMF CAF NHF  
 S A V EMBLYNETTE 1182  
 ALBERDA TRAVELER 416 AMF CAF NHF  
 ATLASTA WENDY 37H

CONNELY DATELINE  
**ATLASTA DATELINE TINA 3J 956488**  
 ATLASTA TINA 14G

D H D TRAVELER 6807 AMF NHF  
 EILA EILA OF CONANGA AMF  
 MLA SHAMUS 45E  
 MLA ELCON 20'93

ACTUAL BW	ADJ. 205D	EPDS			
		BW	WW	YW	MILK
82	786	+2.5 P+	+47 P+	+86 P+	+18 P



Dam of Lot 43

ATLASTA DATELINE TINA 3J



ATLASTA PREDOMINANT 31W

EPDs: BW: +3.3 WW: +51 YW: +94 Milk: +23 TM: +49 CE: +5.0 MCE: +6.0  
 Co-owned with KBJ Round Farms & Dream Makers Angus

# Atlasta Angus



# 44 ATLASTA PREDOMINANT 31W-163Z

MALE JBS 163Z 1686114 FEBRUARY 23 2012

S A V 004 PREDOMINANT 4438 AMF CAF NHF  
**ATLASTA PREDOMINANT 31W 1527926**  
 ATLASTA WENDY 35K

S A V 8180 TRAVELER 004 DMF DWF AMF CAF NHF  
 S A V EMBLYNETTE 1182  
 ALBERDA TRAVELER 416 AMF CAF NHF  
 ATLASTA WENDY 37H

BASIN MAX 602C AMF CAF NHF  
**ATLASTA WENDY 27U 1473678**  
 ATLASTA WENDY 37H

G T MAXIMUM AMF CAF NHF  
 BASIN ELINE ERICA 315U  
 MACC INDIAN NATION 66F  
 MLA WENDY 3'95

ACTUAL BW	ADJ. 205D	EPDS			
		BW	WW	YW	MILK
86	824	+3.6 P+	+49 P+	+92 P+	+20 P



LOT 44 - ATLASTA PREDOMINANT 31W-163Z

# 45 ATLASTA PREDOMINANT 31W-103Z

MALE JBS 103Z 1685884 JANUARY 23 2012

S A V 004 PREDOMINANT 4438 AMF CAF NHF  
**ATLASTA PREDOMINANT 31W 1527926**  
 ATLASTA WENDY 35K

S A V 8180 TRAVELER 004 DMF DWF AMF CAF NHF  
 S A V EMBLYNETTE 1182  
 ALBERDA TRAVELER 416 AMF CAF NHF  
 ATLASTA WENDY 37H

GRANDVIEW WOMACK DIRECT  
**ATLASTA RITO ERICA 39P 1236613**  
 ATLASTA ERICA 10'96

B/R NEW DESIGN 036 AMF CAF NHF  
 MENGES MISS SKYMERE 78B  
 WHS PLAYBOY 5B  
 MLA ERICA 12'93

ACTUAL BW	ADJ. 205D	EPDS			
		BW	WW	YW	MILK
87	684	+3.8 P+	+41 P+	+74 P+	+19 P



ATLASTA RITO ERICA 39P

*Dam of Lot 45*



LOT 45 - ATLASTA PREDOMINANT 31W-103Z

# 46 ATLASTA PREDOMINANT 31W-167Z

MALE JBS 167Z 1686117 FEBRUARY 28 2012

S A V 004 PREDOMINANT 4438 AMF CAF NHF  
**ATLASTA PREDOMINANT 31W 1527926**  
 ATLASTA WENDY 35K

S A V 8180 TRAVELER 004 DMF DWF AMF CAF NHF  
 S A V EMBLYNETTE 1182  
 ALBERDA TRAVELER 416 AMF CAF NHF  
 ATLASTA WENDY 37H

SVF SIEBRINGS FOREVER RUSS AMF CAF NHF  
**ATLASTA ERICA 126U 1476204**  
 ATLASTA ERICA 8P

GDAR SVF RUSS 184B  
 GDAR SVF FOREVER LADY 214D  
 B/R NEW FRONTIER 095 AMF CAF NHF  
 ATLASTA ERICA 57H

ACTUAL BW	ADJ. 205D	EPDS			
		BW	WW	YW	MILK
92	779	+4.7 P+	+52 P+	+96 P+	+23 P



LOT 46 - ATLASTA PREDOMINANT 31W-167Z

# 47 ATLASTA PREDOMINANT 31W-104Z

MALE JBS 104Z 1686075 JANUARY 24 2012

S A V 004 PREDOMINANT 4438 AMF CAF NHF  
**ATLASTA PREDOMINANT 31W 1527926**  
 ATLASTA WENDY 35K

S A V 8180 TRAVELER 004 DMF DWF AMF CAF NHF  
 S A V EMBLYNETTE 1182  
 ALBERDA TRAVELER 416 AMF CAF NHF  
 ATLASTA WENDY 37H

SVF SIEBRINGS FOREVER RUSS AMF CAF NHF  
**ATLASTA ELSLOW 40U 1473788**  
 BB ELSLOW 23P

GDAR SVF RUSS 184B  
 GDAR SVF FOREVER LADY 214D  
 SITZ RAINMAKER 9422  
 SITZ ELSLOW 203

ACTUAL BW	ADJ. 205D	EPDS			
		BW	WW	YW	MILK
86	712	+3.9 P+	+48 P+	+93 P+	+21 P

# Atlasta Angus

# 48 ATLASTA PREDOMINANT 31W-35Z

MALE JBS 35Z 1686028 JANUARY 10 2012

S A V 004 PREDOMINANT 4438 AMF CAF NHF  
**ATLASTA PREDOMINANT 31W 1527926**  
 ATLASTA WENDY 35K

S A V 8180 TRAVELER 004 DMF DWF AMF CAF NHF  
 S A V EMBLYNETTE 1182  
 ALBERDA TRAVELER 416 AMF CAF NHF  
 ATLASTA WENDY 37H

REMITALL PILOT 103P  
**ATLASTA WENDY 1473669**  
 MLA BUFFALO GAL 55'97

REMITALL MERCEDES 146M  
 HAPPYVALE NEONIA 27E  
 MLA KOCHIESE 55E  
 MLA WENDY 7'89

ACTUAL BW	ADJ. 205D	EPDS			
		BW	WW	YW	MILK
90	677	+2.8 P+	+41 P+	+72 P+	+19 P

# 49 ATLASTA PREDOMINANT 31W-118Z

MALE JBS 118Z 1686087 FEBRUARY 01 2012

S A V 004 PREDOMINANT 4438 AMF CAF NHF  
**ATLASTA PREDOMINANT 31W 1527926**  
 ATLASTA WENDY 35K

S A V 8180 TRAVELER 004 DMF DWF AMF CAF NHF  
 S A V EMBLYNETTE 1182  
 ALBERDA TRAVELER 416 AMF CAF NHF  
 ATLASTA WENDY 37H

GGRR TRAFALGAR 19S  
**GGRR PRIDE 14U 1440883**  
 ENNS PRIDE 7R

SCA 03H OF IDEAL 1418  
 SCA LADY ANN 03K  
 G A R GRID MAKER AMF CAF NHF  
 W B PRIDE 2094

ACTUAL BW	ADJ. 205D	EPDS			
		BW	WW	YW	MILK
85	637	+2.6 P+	+42 P+	+79 P+	+19 P



LOT 50 - ATLASTA FINAL ANSWER 7Z

# 50 ATLASTA FINAL ANSWER 7Z

MALE JBS 7Z REG # PENDING JANUARY 4 2012

S A V FINAL ANSWER 0035 AMF CAF NHF  
**LFE BA LEWIS 809U 1496729**  
 SOUTHERN OX ERICA 51T

SITZ TRAVELER 8180 AMF CAF NHF  
 S A V EMULOUS 8145 CAF  
 SPRUCE VIEW EILEENMERE 74N  
 SOUTHERN OX ERICA 66J

REMINGTON RIGHT TIME 124R  
**ATLASTA BRIAR 10X (JBS 10X)**  
 ATLASTA BRIAR 45T

LEACHMAN RIGHT TIME  
 CRESCENT CREEK BLACKCAP 84E  
 HF COMMANDER 60P  
 BARNETT BRIAR 15P

**BW: 82 lbs. WW Sept 10/12: 910 lbs.**

# 51 ATLASTA FINAL ANSWER 809U-26Z

MALE JBS 26Z 1686024 JANUARY 09 2012

S A V FINAL ANSWER 0035 AMF CAF NHF  
**LFE BA LEWIS 809U 1496729**  
 SOUTHERN OX ERICA 51T

SITZ TRAVELER 8180 AMF CAF NHF  
 S A V EMULOUS 8145 CAF  
 SPRUCE VIEW EILEENMERE 74N  
 SOUTHERN OX ERICA 66J

REMITALL SUPEREVENT 532S  
**ATLASTA MISS ELSLOW 43X 1574872**  
 BB ELSLOW 2S

JUSTAMERE 1118 CASH 665P  
 KBJ ANNIE 829N  
 MYTTY IN FOCUS AMF CAF NHF  
 BB ELSLOW 23P

ACTUAL BW	ADJ. 205D	EPDS			
		BW	WW	YW	MILK
86	854	+3.9 P+	+58 P+	+97 P+	+26 P



**LFE BA LEWIS 809U**

EPDS: BW: +1.3 WW: +47 YW: +80 Milk: +24 TM: +48 CE: +6.0 MCE: +7.0



LOT 51 - ATLASTA FINAL ANSWER 809U-26Z

# Atlasta Angus



# 52 ATLASTA FINAL ANSWER 809U-32Z

MALE JBS 32Z 1686030 JANUARY 10 2012

S A V FINAL ANSWER 0035 AMF CAF NHF  
**LFE BA LEWIS 809U 1496729**  
 SOUTHERN OX ERICA 51T

SITZ TRAVELER 8180 AMF CAF NHF  
 S A V EMULOUS 8145 CAF  
 SPRUCE VIEW EILEENMERE 74N  
 SOUTHERN OX ERICA 66J

REMITALL SUPEREVENT 532S  
**ATLASTA LADY OF P.D. 39X 1582936**  
 BB LADY 35S

JUSTAMERE 1118 CASH 665P  
 KBJ ANNIE 829N  
 BASIN MAX 602C AMF CAF NHF  
 LADY OF PEAK DOT 713L

ACTUAL BW	ADJ. 205D	EPDS			
		BW	WW	YW	MILK
82	784	+3.0 P+	+45 P+	+81 P+	+22 P



LOT 52 - ATLASTA FINAL ANSWER 809U-32Z

# 53 ATLASTA FINAL ANSWER 809U-99Z

MALE JBS 99Z 1686074 JANUARY 23 2012

S A V FINAL ANSWER 0035 AMF CAF NHF  
**LFE BA LEWIS 809U 1496729**  
 SOUTHERN OX ERICA 51T

SITZ TRAVELER 8180 AMF CAF NHF  
 S A V EMULOUS 8145 CAF  
 SPRUCE VIEW EILEENMERE 74N  
 SOUTHERN OX ERICA 66J

REMINGTON RIGHT TIME 124R  
**ATLASTA ELISEMERE 88X 1573538**  
 ATLASTA MISS ESSO 28T

LEACHMAN RIGHT TIME AMF  
 CRESCENT CREEK BLACKCAP 84E  
 ATLASTA FOREVER RUSS 25R  
 ATLASTA MS. ESSO 60H

ACTUAL BW	ADJ. 205D	EPDS			
		BW	WW	YW	MILK
85	891	+3.3 P+	+53 P+	+89 P+	+22 P



LOT 52 - ATLASTA FINAL ANSWER 809U-99Z

# 54 ATLASTA FINAL ANSWER 809U-10Z

MALE JBS 10Z 1686012 JANUARY 06 2012

S A V FINAL ANSWER 0035 AMF CAF NHF  
**LFE BA LEWIS 809U 1496729**  
 SOUTHERN OX ERICA 51T

SITZ TRAVELER 8180 AMF CAF NHF  
 S A V EMULOUS 8145 CAF  
 SPRUCE VIEW EILEENMERE 74N  
 SOUTHERN OX ERICA 66J

GGRR TRAFALGAR 19S  
**ATLASTA GT MAXINE 14X 1573507**  
 BARNETT MAXINE 112P

SCA 03H OF IDEAL 1418  
 SCA LADY ANN 03K  
 PINE DRIVE BIG SKY AMF CAF NHF  
 F V MAXINE 112C

ACTUAL BW	ADJ. 205D	EPDS			
		BW	WW	YW	MILK
80	762	+2.5 P+	+43 P+	+74 P+	+19 P



LOT 54 - ATLASTA FINAL ANSWER 809U-10Z



*Driver in training*

# Atlasta Angus



LOT 56 - ATLASTA FINAL ANSWER 809U-96Z

## 58 ATLASTA FINAL ANSWER 809U-138Z

MALE JBS 138Z 1686098 FEBRUARY 07 2012

S A V FINAL ANSWER 0035 AMF CAF NHF  
**LFE BA LEWIS 809U 1496729**  
 SOUTHERN OX ERICA 51T

SITZ TRAVELER 8180 AMF CAF NHF  
 S A V EMULOUS 8145 CAF  
 SPRUCE VIEW EILEENMERE 74N  
 SOUTHERN OX ERICA 66J

CONNELLY DATELINE  
**ATLASTA BLACKCAP LADY 51X 1573521**  
 ATLASTA BLACK LADY 42L

D H D TRAVELER 6807 AMF NHF  
 EILA EILA OF CONANGA AMF  
 TC STOCKMAN 365  
 MLA BLACKCAP 21'95

ACTUAL BW	ADJ. 205D	EPDS			
		BW	WW	YW	MILK
75	828	+1.2 P+	+46 P+	+80 P+	+18 P

## 55 ATLASTA FINAL ANSWER 809U-65Z

MALE JBS 65Z 1686052 JANUARY 15 2012

S A V FINAL ANSWER 0035 AMF CAF NHF  
**LFE BA LEWIS 809U 1496729**  
 SOUTHERN OX ERICA 51T

SITZ TRAVELER 8180 AMF CAF NHF  
 S A V EMULOUS 8145 CAF  
 SPRUCE VIEW EILEENMERE 74N  
 SOUTHERN OX ERICA 66J

HF KODIAK 57U  
**ATLASTA ERICA 11X 1574833**  
 ATLASTA ERICA 125U

HF KODIAK 5R AMF CAF NHF MAF  
 HF ROSEBUD 94P  
 B/R NEW FRONTIER 095 AMF CAF NHF  
 ATLASTA NY ERICA 33P

ACTUAL BW	ADJ. 205D	EPDS			
		BW	WW	YW	MILK
76	775	+1.4 P+	+44 P+	+79 P+	+23 P

## 59 ATLASTA FINAL ANSWER 809U-120Z

MALE JBS 120Z 1686088 FEBRUARY 01 2012

S A V FINAL ANSWER 0035 AMF CAF NHF  
**LFE BA LEWIS 809U 1496729**  
 SOUTHERN OX ERICA 51T

SITZ TRAVELER 8180 AMF CAF NHF  
 S A V EMULOUS 8145 CAF  
 SPRUCE VIEW EILEENMERE 74N  
 SOUTHERN OX ERICA 66J

REMITALL SUPEREVENT 532S  
**ATLASTA MISS BANDO 74X 1573524**  
 ATLASTA BB BANDO 493 063T

JUSTAMERE 1118 CASH 665P  
 KBJ ANNIE 829N  
 N BAR EMULATION EXT AMF CAF NHF  
 GAR BANDO 493

ACTUAL BW	ADJ. 205D	EPDS			
		BW	WW	YW	MILK
84	796	+3.2 P+	+50 P+	+84 P+	+23 P

## 56 ATLASTA FINAL ANSWER 809U-96Z

MALE JBS 96Z 1686070 JANUARY 22 2012

S A V FINAL ANSWER 0035 AMF CAF NHF  
**LFE BA LEWIS 809U 1496729**  
 SOUTHERN OX ERICA 51T

SITZ TRAVELER 8180 AMF CAF NHF  
 S A V EMULOUS 8145 CAF  
 SPRUCE VIEW EILEENMERE 74N  
 SOUTHERN OX ERICA 66J

REMITALL SUPEREVENT 532S  
**ATLASTA VD BOOBOO 58X 1573522**  
 ATLASTA BOOBOO 75S

JUSTAMERE 1118 CASH 665P  
 KBJ ANNIE 829N  
 VERMILION DATELINE 7078 AMF CAF NHF  
 ATLASTA BOOBOO 2'96

ACTUAL BW	ADJ. 205D	EPDS			
		BW	WW	YW	MILK
86	809	+4.2 P+	+49 P+	+86 P+	+23 P

## 60 ATLASTA FINAL ANSWER 809U-21Z

MALE JBS 21Z 1686020 JANUARY 08 2012

S A V FINAL ANSWER 0035 AMF CAF NHF  
**LFE BA LEWIS 809U 1496729**  
 SOUTHERN OX ERICA 51T

SITZ TRAVELER 8180 AMF CAF NHF  
 S A V EMULOUS 8145 CAF  
 SPRUCE VIEW EILEENMERE 74N  
 SOUTHERN OX ERICA 66J

ATLASTA FOREVER RUSS 37S  
**ATLASTA DYNA 94X 1573546**  
 ATLASTA DYNA LADY 69N

SVF SIEBRINGS FOREVER RUSS AMF CAF NHF  
 ATLASTA ERICA 34H  
 COLDSTREAM SKUKUM 52K  
 ATLASTA DYNA E 14H

ACTUAL BW	ADJ. 205D	EPDS			
		BW	WW	YW	MILK
78	720	+1.7 P+	+36 P+	+63 P+	+23 P

## 57 ATLASTA FINAL ANSWER 809U-31Z

MALE JBS 31Z 1686025 JANUARY 09 2012

S A V FINAL ANSWER 0035 AMF CAF NHF  
**LFE BA LEWIS 809U 1496729**  
 SOUTHERN OX ERICA 51T

SITZ TRAVELER 8180 AMF CAF NHF  
 S A V EMULOUS 8145 CAF  
 SPRUCE VIEW EILEENMERE 74N  
 SOUTHERN OX ERICA 66J

REMITALL SUPEREVENT 532S  
**ATLASTA PRIDE 70X 1582937**  
 BB PRIDE 15S

JUSTAMERE 1118 CASH 665P  
 KBJ ANNIE 829N  
 CONNELLY TIMELINE CAF  
 BB PRIDE 2P

ACTUAL BW	ADJ. 205D	EPDS			
		BW	WW	YW	MILK
84	816	+3.6 P+	+55 P+	+92 P+	+23 P

## 61 ATLASTA FINAL ANSWER 809U-137Z

MALE JBS 137Z 1686097 FEBRUARY 07 2012

S A V FINAL ANSWER 0035 AMF CAF NHF  
**LFE BA LEWIS 809U 1496729**  
 SOUTHERN OX ERICA 51T

SITZ TRAVELER 8180 AMF CAF NHF  
 S A V EMULOUS 8145 CAF  
 SPRUCE VIEW EILEENMERE 74N  
 SOUTHERN OX ERICA 66J

S A V 004 PREDOMINANT 4438 AMF CAF NHF  
**ATLASTA LADY OF P.D. 20X 1582927**  
 WHS MARGARET 66M

S A V 8180 TRAVELER 004 DMF DWF AMF CAF NHF  
 S A V EMBLYNETTE 1182  
 DURALTA 6446D TRAVELER 5K  
 WHS ROSEBUD 1E

ACTUAL BW	ADJ. 205D	EPDS			
		BW	WW	YW	MILK
87	733	+3.7 P+	+44 P+	+75 P+	+22 P

# Atlasta Angus



# 62

## ATLASTA STOCKMAN 83W-37Z

MALE JBS 37Z 1686034 JANUARY 11 2012

TC STOCKMAN 365  
ATLASTA STOCKMAN 365-83W 1527978  
BB BARBARA PERFECTION 12N

TC STOCKMAN  
TC PRIDE 0014  
SITZ TRAVELER 8180 AMF CAF NHF  
SITZ BARBARA PERFECTION 770

CONNEALY TIMELINE CAF  
ATLASTA BB BARB JET 050T 1411491  
BB BARBARAMERE JET 20P

CONNEALY DATELINE  
ENCHANTS FORTUNE CONANGA 6127  
SITZ ALLIANCE 7002  
SITZ BARBARAMERE JET 3053

ACTUAL BW	ADJ. 205D	EPDS			
		BW	WW	YW	MILK
93	736	+3.7 P+	+49 P+	+84 P+	+19 P



LOT 62 - ATLASTA STOCKMAN 83W-37Z

# 63

## ATLASTA STOCKMAN 83W-89Z

MALE JBS 89Z 1686065 JANUARY 20 2012

TC STOCKMAN 365  
ATLASTA STOCKMAN 365-83W 1527978  
BB BARBARA PERFECTION 12N

TC STOCKMAN  
TC PRIDE 0014  
SITZ TRAVELER 8180 AMF CAF NHF  
SITZ BARBARA PERFECTION 770

MORGANS DIRECTION 111 9901 AMF CAF NHC  
ATLASTA BB DIRECTION 041T NHF 1475672  
LLB ELECTRA ERICA 521R

C A FUTURE DIRECTION 5321 AMC CAF NHC  
MCC BARBIE 9901 5205 797  
W C C SPECIAL DESIGN L309 AMF CAF NHF  
B F ROBERTA 4093

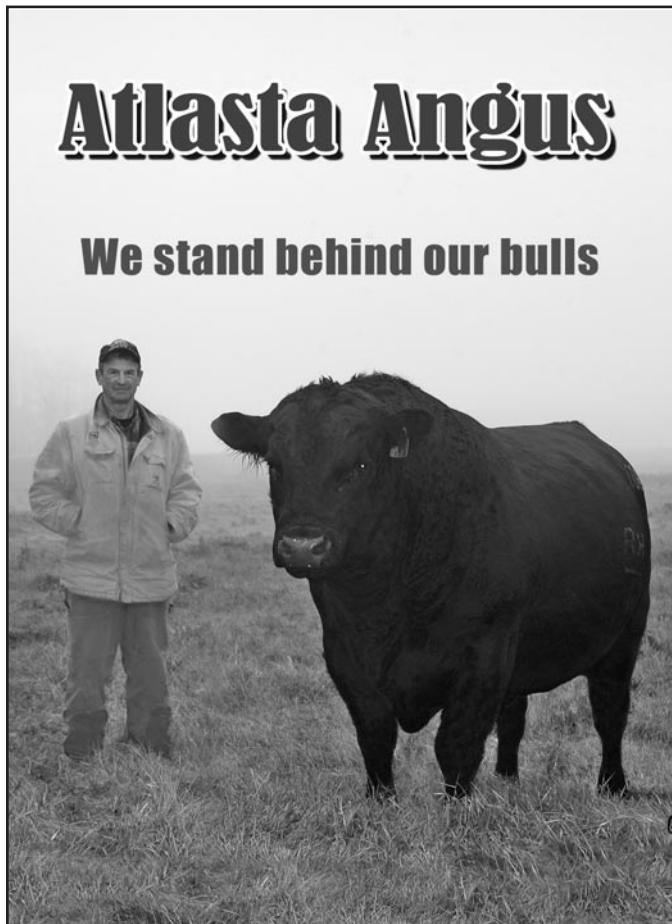
ACTUAL BW	ADJ. 205D	EPDS			
		BW	WW	YW	MILK
92	725	+3.5 P+	+44 P+	+77 P+	+25 P



LOT 63 - ATLASTA STOCKMAN 83W-89Z

# Atlasta Angus

## We stand behind our bulls



# 64

## ATLASTA STOCKMAN 83W-70Z

MALE JBS 70Z 1686048 JANUARY 15 2012

TC STOCKMAN 365  
ATLASTA STOCKMAN 365-83W 1527978  
BB BARBARA PERFECTION 12N

TC STOCKMAN  
TC PRIDE 0014  
SITZ TRAVELER 8180 AMF CAF NHF  
SITZ BARBARA PERFECTION 770

THREE TREES PRIME CUT 0145 AMF CAF NHF  
ATLASTA BB EISA EVERGREEN 09T 1411500  
BB EISA EVERGREEN 30R

SUMMITCREST PRIME CUT 1G42 AMF CAF NHF  
BLACK TOOTH LADY B 380  
PEAK DOT FAME 414M  
SITZ EISA EVERGREEN 2433

ACTUAL BW	ADJ. 205D	EPDS			
		BW	WW	YW	MILK
92	571	+3.1 P+	+35 P+	+61 P+	+20 P

# Atlasta Angus



LOT 65 - ATLASTA TRAVELER 047T-143Z

## 65 ATLASTA TRAVELLER 047T-143Z

MALE JBS 143Z 1686104 FEBRUARY 10 2012

D H D TRAVELER 6807 AMF NHF  
**ATLASTA BB TRAVELER 6807 047T 1417947**  
 LEACHMAN WENDY 9031

Q A S TRAVELER 23-4 AMF CAF NHF  
 BEMINDFUL MAID D H D 0807  
 LEACHMAN PARAGON  
 LEACHMAN WENDY 1077

REMINGTON RIGHT TIME 124R  
**ATLASTA 49R MISS RIGHT TIME 14 1528055**  
 ATLASTA PATRICIA 49R

LEACHMAN RIGHT TIME AMF  
 CRESCENT CREEK BLACKCAP 84E  
 HF FORMATION 13K  
 ATLASTA PATRICIA 220M

ACTUAL BW	ADJ. 205D	EPDS			
		BW	WW	YW	MILK
82	763	+2.5 P+	+37 P+	+67 P+	+15 P

## 66 ATLASTA TRAVELLER 047T-105Z

MALE JBS 105Z 1686077 JANUARY 25 2012

D H D TRAVELER 6807 AMF NHF  
**ATLASTA BB TRAVELER 6807 047T 1417947**  
 LEACHMAN WENDY 9031

Q A S TRAVELER 23-4 AMF CAF NHF  
 BEMINDFUL MAID D H D 0807  
 LEACHMAN PARAGON  
 LEACHMAN WENDY 1077

REMITALL PILOT 103P  
**ATLASTA BARBARA 134W 1527914**  
 ATLASTA BARBARA 33H

REMITALL MERCEDES 146M  
 HAPPYVALE NEONIA 27E  
 MACC INDIAN NATION 66F  
 MLA BARBARA 4'95

ACTUAL BW	ADJ. 205D	EPDS			
		BW	WW	YW	MILK
80	709	+2.1 P+	+32 P+	+57 P+	+12 P



LOT 66 - ATLASTA TRAVELER 047T-105Z

# Atlasta Angus



LOT 67 - ATLASTA TRAVELER 047T-110Z

## 67 ATLASTA TRAVELLER 047T-110Z

MALE JBS 110Z 1686081 JANUARY 29 2012

D H D TRAVELER 6807 AMF NHF  
**ATLASTA BB TRAVELER 6807 047T 1417947**  
 LEACHMAN WENDY 9031

Q A S TRAVELER 23-4 AMF CAF NHF  
 BEMINDFUL MAID D H D 0807  
 LEACHMAN PARAGON  
 LEACHMAN WENDY 1077

BB ATLASTA FOCUS 46S  
**ATLASTA OPERA 52W 1531261**  
 WINTERING HILLS OPERA 115P

S A F FOCUS OF E R AMF CAF NHF  
 LUKENS 6807 KEM 3956  
 RIVERCREST LAD CSP 10J  
 WHS JASMIN 44J

ACTUAL BW	ADJ. 205D	EPDS			
		BW	WW	YW	MILK
86	665	+3.6 P+	+33 P+	+54 P+	+17 P

## 68 ATLASTA TRAVELLER 047T-109Z

MALE JBS 109Z 1686079 JANUARY 28 2012

D H D TRAVELER 6807 AMF NHF  
**ATLASTA BB TRAVELER 6807 047T 1417947**  
 LEACHMAN WENDY 9031

Q A S TRAVELER 23-4 AMF CAF NHF  
 BEMINDFUL MAID D H D 0807  
 LEACHMAN PARAGON  
 LEACHMAN WENDY 1077

REMITALL PILOT 103P  
**ATLASTA BARBARA NELL 192W 1527907**  
 SITZ BARBARAMERE NELL 3093

REMITALL MERCEDES 146M  
 HAPPYVALE NEONIA 27E  
 LEACHMAN TWOPLY 0506  
 SITZ BARBARAMERE NELL 2088

ACTUAL BW	ADJ. 205D	EPDS			
		BW	WW	YW	MILK
84	717	+3.4 P+	+35 P+	+61 P+	+9 P



ATLASTA BB TRAVELER 6807 047T

EPDS: BW: +3.1 WW: +36 YW: +62 Milk: +9 TM: +27 SC: -0.41 CE: +2.0 MCE: +4.0



69

**ATLASTA TRAVELLER 047T-100Z**

MALE JBS 100Z 1686073 JANUARY 23 2012

D H D TRAVELER 6807 AMF NHF  
**ATLASTA BB TRAVELER 6807 047T 1417947**  
 LEACHMAN WENDY 9031

Q A S TRAVELER 23-4 AMF CAF NHF  
 BEMINDFUL MAID D H D 0807  
 LEACHMAN PARAGON  
 LEACHMAN WENDY 1077

S A V 004 PREDOMINANT 4438 AMF CAF NHF  
**ATLASTA LADY PREDOMINANT 80W 1528187**  
 ATLASTA LADY 125R

S A V 8180 TRAVELER 004 DMF DWF AMF CAF NHF  
 S A V EMBLYNETTE 1182  
 A C REMINGTON  
 ATLASTA LADY 7G

ACTUAL BW	ADJ. 205D	EPDS			
		BW	WW	YW	MILK
80	646	+2.2 P+	+36 P+	+61 P+	+13 P



LOT 70 - ATLASTA EXT-23Z

70

**ATLASTA EXT-23Z**

MALE JBS 23Z 1686019 JANUARY 08 2012

EMULATION N BAR 5522  
**N BAR EMULATION EXT AMF CAF NHF 849773**  
 N BAR PRIMROSE 2424

EMULATION 31 DWF  
 ANKONY 8F78 LASS 8F275  
 EMULATION 31 DWF  
 PRIMROSE N BAR 9962

S A V 004 PREDOMINANT 4438 AMF CAF NHF  
**ATLASTA 770 B. PERFECTION 3X 1582924**  
 BB BARBARA PERFECTION 107S

S A V 8180 TRAVELER 004 DMF DWF AMF CAF NHF  
 S A V EMBLYNETTE 1182  
 SITZ TRAVELER 8180 AMF CAF NHF  
 SITZ BARBARA PERFECTION 770

ACTUAL BW	ADJ. 205D	EPDS			
		BW	WW	YW	MILK
70	757	-1.1 P+	+38 P+	+73 P+	+20 P



Sire of Lots 70 & 71

N BAR EMULATION EXT

EPDs: BW: +1.8 WW: +41 YW: +77 Milk: +18 TM: +39 SC: -0.32 CE: +5.0 MCE: +13.0

71

**ATLASTA EXT 61Z**

MALE JBS 61Z 1686053 JANUARY 15 2012

EMULATION N BAR 5522  
**N BAR EMULATION EXT AMF CAF NHF 849773**  
 N BAR PRIMROSE 2424

EMULATION 31 DWF  
 ANKONY 8F78 LASS 8F275  
 EMULATION 31 DWF  
 PRIMROSE N BAR 9962

SVF SIEBRINGS FOREVER RUSS AMF CAF NHF  
**ATLASTA 34H ERICA RUSS 60X 1589932**  
 ATLASTA ERICA 34H

GDAR SVF RUSS 184B  
 GDAR SVF FOREVER LADY 214D  
 MACC INDIAN NATION 66F  
 MLA ELLEN ERICA 34'95

ACTUAL BW	ADJ. 205D	EPDS			
		BW	WW	YW	MILK
80	686	+2.0 P+	+31 P+	+61 P+	+21 P

**EPDs:**

- Expected Progeny Differences are values that predict how the future progeny of an animal will perform relative to the progeny of other animals in the same breed.
- Are expressed in the units measured for each trait.
- Allow a fair comparison of breeding value by removing environmental bias such as climate, feed and special management.
- Are the best tool available to compare animals between herds, countries and year of birth.

**BW: Birth Weight** - expressed in pounds, is a predictor of a sire's ability to transmit birth weight to his progeny compared to that of other sires.

**WW: Weaning Weight** - expressed in pounds, is a predictor of a sire's ability to transmit weaning growth to his progeny compared to that of other sires. WW is an indicator of growth from birth to weaning (205 days). The calf's growth during this period is influenced by its own ability to grow plus its mother's maternal abilities.

**YW: Yearling Weight** - expressed in pounds, is a predictor of a sire's ability to transmit yearling growth to his progeny compared to that of other sires.

**MILK: Milk** - is an indicator of milking ability in daughters. It represents the differences in weaning weight of calves due to the amount of milk produced by their mothers. It is expressed in pounds of calf weaned.

**TM: Total Maternal** - is a combination of the weaning weight and milk EPDs. It is calculated as: 1/2 WW EPD + Milk EPD = TM. This EPD represents the differences in weaning weights between calves due to mothering and milking ability of their dams.

**MCE: Maternal Calving Ease** - is expressed as a difference in percentage of unassisted births with a higher value indicating greater probability of unassisted births in first-calf daughters. It predicts the average ease with which a sire's daughters will calve as first-calf heifers when compared to daughters of other sires.

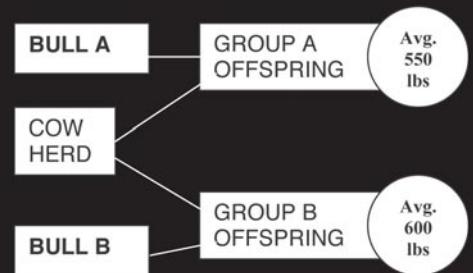
**CE: Calving Ease Direct** - the average difference in ease with which a sire's calves will be born when he is bred to first calf heifers. The higher the number the more probability that his calves will be born unassisted.

EPDs evaluate group averages and offspring's performance. They can not predict individual performance or weights.

For example, if Bull A (weaning weight EPD of +10) and Bull B (WW of +60) were randomly mated with ten similar cows, we would expect the group average weaning weight of Bull A's offspring to be 50 lbs lighter than that of Bull B's (60-10=50).

Calf	A	B
1	500	400
2	510	450
3	520	500
4	530	550
5	540	600
6	560	600
7	570	650
8	580	700
9	590	750
10	600	800
<b>Avg.</b>	<b>550</b>	<b>600</b>

Note that not all calves from Bull B have a higher weaning weight, but the average is 50 lbs higher.



AVERAGE EPDS				
BW	WW	YW	MILK	TM
+2.8	+41	+73	+18	+38

**Atlasta Angus**



LOT 72 - ATLASTA IN FOCUS 20X-18Z

# 72

## ATLASTA IN FOCUS 20X-18Z

MALE JBS 18Z 1686018 JANUARY 07 2012

MYTTY IN FOCUS AMF CAF NHF  
**CU MIGHTY FOCUS 20X 1592705**  
 CU K FRONTIER 050U OF 081

S A F FOCUS OF E R AMF CAF NHF  
 MYTTY COUNTESS 906  
 KCS NEW FRONTIER 095-5601  
 C U CONNIE 081K OF 620

JUSTAMERE 1118 CASH 665P  
**ATLASTA STOCK LADY 186X 1573580**  
 ATLASTA STOCK LADY 38L

EXAR BIG TIMBER 1118  
 REMITALL KEEPSAKE 143L  
 TC STOCKMAN 365  
 MLA MISS BRIDE 9'86

ACTUAL BW	ADJ. 205D	EPDS			
		BW	WW	YW	MILK
76	722	+1.2 P+	+13 P+	+27 P+	+12 P



LOT 73 - ATLASTA DATELINE 47Z

# 73

## ATLASTA DATELINE 47Z

MALE JBS 47Z 1686040 JANUARY 13 2012

CONNEALY DATELINE  
**ATLASTA CD DATELINE 24X 1582928**  
 BB BARBARA PERFECTION 12N

D H D TRAVELER 6807 AMF NHF  
 EILA EILA OF CONANGA AMF  
 SITZ TRAVELER 8180 AMF CAF NHF  
 SITZ BARBARA PERFECTION 770

REMINGTON FINAL ANSWER 209T  
**ATLASTA 37H WENDY 69X 1574837**  
 ATLASTA WENDY 27U

S A V FINAL ANSWER 0035 AMF CAF NHF  
 BOTANY ANGUS ELLEN 14G  
 BASIN MAX 602C AMF CAF NHF  
 ATLASTA WENDY 37H

ACTUAL BW	ADJ. 205D	EPDS			
		BW	WW	YW	MILK
74	706	+0.9 P+	+33 P+	+65 P+	+17 P



CU MIGHTY FOCUS 20X

Sire of Lot 72



ATLASTA CD DATELINE 24X

EPDs: BW: +1.5 WW: +37 YW: +71 Milk: +17 TM: +36 CE: +8.0 MCE: +11.0

# 74

## ATLASTA DATELINE 52Z

MALE JBS 52Z REG # PENDING JANUARY 13 2012

CONNEALY DATELINE  
**ATLASTA CD DATELINE 24X 1582928**  
 BB BARBARA PERFECTION 12N

D H D TRAVELER 6807 AMF NHF  
 EILA EILA OF CONANGA AMF  
 SITZ TRAVELER 8180 AMF CAF NHF  
 SITZ BARBARA PERFECTION 770

REMINGTON RIGHT TIME 124R  
**ATLASTA IDEAL ANN 135X**  
 ATLASTA BB IDEAL ANN 07T NHC

LEACHMAN RIGHT TIME  
 CRESCENT CREEK BLACKCAP 84E  
 MORGANS DIRECTION AMF CAF NHC  
 SCA LADY ANN 34R

BW: 82 lbs. WW: 730 lbs.

# Atlasta Angus

*Please join us for lunch before  
 the sale & refreshments after*



# Coming Two-Year-Old Bulls



LOT 75 - ATLASTA RIGHT TIME 210Y

## 75 ATLASTA RIGHT TIME 210Y

MALE JBS 210Y 1620556 MARCH 21 2011

LEACHMAN RIGHT TIME AMF  
**REMINGTON RIGHT TIME 124R 1291957**  
 CRESCENT CREEK BLACKCAP 84E

N BAR EMULATION EXT AMF CAF NHF  
 LEACHMAN ERICA 0025  
 RITO 8094 PRAIRIELANE 2060 AMF  
 CRESCENT CREEK BLACKCAP 112A

VERMILION DATELINE 7078 AMF CAF NHF  
**ATLASTA PATRICIA 18R 1276613**  
 MLA PATRICIA 29'94

CONNELY DATELINE  
 VERMILION BLACKBIRD 5044  
 MLA CRUSADER 2Z  
 MLA PATRICIA 24'86

ACTUAL BW	ADJ. 205D	EPDS			
		BW	WW	YW	MILK
86	776	+2.4 35%	+36 25%	+68 11%	+16 14%

## 76 ATLASTA CASH 212Y

MALE JBS 212Y 1620558 MARCH 24 2011

EXAR BIG TIMBER 1118  
**JUSTAMERE 1118 CASH 665P 1222961**  
 REMITALL KEEPSAKE 143L

NORTHERN IMPROVEMENT 4480 GF AMF CAF NHF  
 WK TILLIE 7277  
 SITZ ALLIANCE 6595 DMF AMF CAF NHF  
 REMITALL KEEPSAKE 103J

N BAR EMULATION EXT AMF CAF NHF  
**BB LULA 6N 1251143**  
 NICHOLS LULA Z88

EMULATION N BAR 5522  
 N BAR PRIMROSE 2424  
 LEACHMAN TONTO AMF NHF  
 NICHOLS LULA T79

ACTUAL BW	ADJ. 205D	EPDS			
		BW	WW	YW	MILK
92	912	+3.6 35%	+51 25%	+90 17%	+27 17%



LOT 76 - ATLASTA CASH 212Y



LOT 77 - ATLASTA TRAVELER 6068-207Y

## 77 ATLASTA TRAVELER 6068S-207Y

MALE JBS 207Y 1620437 JANUARY 19 2011

ALBERDA TRAVELER 416 AMF CAF NHF  
**ROYAL TRAVELER DRCC 6068S 1353251**  
 RALLY KATINKA 229B

D H D TRAVELER 6807 AMF NHF  
 ALBERDA QUEEN KIMBERLY 222  
 N BAR EMULATION EXT AMF CAF NHF  
 HARMONY HILL KATINKA 229

HILL TOP DYNASTY 146F  
**ATLASTA MS. ESSO 60H 918552**  
 MLA MISS ESSO 29'92

NORTHLINE JAKE 94A  
 G P BLACKCAP DYNASTY 146Y  
 MLA CRUSADER 2Z  
 PJM MISS ESSO 36R

ACTUAL BW	ADJ. 205D	EPDS			
		BW	WW	YW	MILK
87	673	+2.9 35%	+27 24%	+49 8%	+13 13%

## 78 ATLASTA TRAFALGER 192Y

MALE JBS 192Y 1620542 MARCH 05 2011

SCA 03H OF IDEAL 1418  
**GRR TRAFALGER 19S 1343847**  
 SCA LADY ANN 03K

IDEAL 1418 OF 8103 4286 AMF CAF NHF  
 SCA 20E OF IDEAL 033 7258  
 R R SCOTCHCAP 9440 AMF NHF  
 SCA LADY ANN 12X

ATLASTA FOREVER RUSS 25R  
**ATLASTA MISS ESSO 28T 1405348**  
 ATLASTA MS. ESSO 60H

SVF SIEBRINGS FOREVER RUSS AMF CAF NHF  
 ATLASTA ERICA 34H  
 HILL TOP DYNASTY 146F  
 MLA MISS ESSO 29'92

ACTUAL BW	ADJ. 205D	EPDS			
		BW	WW	YW	MILK
95	793	+5.3 34%	+48 23%	+83 8%	+16 11%



LOT 78 - ATLASTA TRAFALGER 192Y

# Atlasta Angus

## Coming Two-Year-Old Bulls



LOT 79 - ATLASTA WFA 181Y

# 79

### ATLASTA WFA 181Y

MALE JBS 181Y 1620531 FEBRUARY 22 2011

REMITALL RANCH 576R  
**WACHING FINAL ANSWER 6T 1370504**  
 WACHING BLACK EDELLA 5024

S A V FINAL ANSWER 0035 AMF CAF NHF  
 HAPPYVALE IDELETTE 6N  
 WACHING BLACK NITRO 270M  
 WACHING UNIVERSAL EDELLA 339

SVF SIEBRINGS FOREVER RUSS AMF CAF NHF  
**ATLASTA WENDY 42S 1341949**  
 MLA WENDY 1'94

GDAR SVF RUSS 184B  
 GDAR SVF FOREVER LADY 214D  
 G D A R WHAM 021 AMF CAF NHF  
 MLA WENDY 20'87

ACTUAL BW	ADJ. 205D	EPDS			
		BW	WW	YW	MILK
92	816	+3.8 34%	+45 23%	+82 9%	+21 10%

# 80

### ATLASTA STOCKMAN 365-49Y

MALE JBS 49Y 1620389 TWIN JANUARY 15 2011

TC STOCKMAN  
**TC STOCKMAN 365 876845**  
 TC PRIDE 0014

LEACHMAN PROMPTER AMF NHF  
 T C JESTRESS 6004  
 V D A R NEW TREND 315 AMF CAF NHF  
 TC PRIDE 8013

SITZ TRAVELER 8180 AMF CAF NHF  
**BB BARBARA PERFECTION 14N 1251139**  
 SITZ BARBARA PERFECTION 770

G D A R TRAVELER 71 AMF CAF NHF  
 SITZ EVERELDA ENTENSE 1137  
 TRAVELER 124 G D A R  
 SITZ BARBARA PERFECTION 1018

ACTUAL BW	ADJ. 205D	EPDS			
		BW	WW	YW	MILK
68	659	+2.4 P	+37 P	+69 P	+23 P



LOT 80 - ATLASTA STOCKMAN 365-49Y



LOT 81 - ATLASTA TRAVELER 047T-204Y

# 81

### ATLASTA TRAVELER 047T-204Y

MALE JBS 204Y 1620551 MARCH 15 2011

D H D TRAVELER 6807 AMF NHF  
**ATLASTA BB TRAVELER 6807 047T 1417947**  
 LEACHMAN WENDY 9031

Q A S TRAVELER 23-4 AMF CAF NHF  
 BEMINDFUL MAID D H D 0807  
 LEACHMAN PARAGON  
 LEACHMAN WENDY 1077

B/R NEW FRONTIER 095 AMF CAF NHF  
**ATLASTA ERICA 125U 1473792**  
 ATLASTA NY ERICA 33P

B/R NEW DESIGN 036 AMF CAF NHF  
 WHITE FENCE PRIDE H1  
 SVF SIEBRINGS FOREVER RUSS AMF CAF NHF  
 ATLASTA ERICA 13H

ACTUAL BW	ADJ. 205D	EPDS			
		BW	WW	YW	MILK
73	731	+1.1 34%	+37 23%	+69 11%	+16 12%

# 82

### ATLASTA TRAVELER 047T-202Y

MALE JBS 202Y 1620549 MARCH 14 2011

D H D TRAVELER 6807 AMF NHF  
**ATLASTA BB TRAVELER 6807 047T 1417947**  
 LEACHMAN WENDY 9031

Q A S TRAVELER 23-4 AMF CAF NHF  
 BEMINDFUL MAID D H D 0807  
 LEACHMAN PARAGON  
 LEACHMAN WENDY 1077

ATLASTA FOREVER RUSS 37S  
**ATLASTA ERICA 177U 1473672**  
 ATLASTA ERICA 13H

SVF SIEBRINGS FOREVER RUSS AMF CAF NHF  
 ATLASTA ERICA 34H  
 ALSIKE ACRES EX NITRO BLAST 3F  
 MLA ERICA 32'89

ACTUAL BW	ADJ. 205D	EPDS			
		BW	WW	YW	MILK
84	810	+2.5 34%	+42 22%	+70 8%	+15 10%



LOT 82 - ATLASTA TRAVELER 047T-202Y

# Atlasta Angus



# Coming Two-Year-Old Bulls

## 83

### ATLASTA NET WORTH 55Y

MALE JBS 55Y 1620396 JANUARY 15 2011

S A V 8180 TRAVELER 004 DMF DWF AMF CAF NHF  
**S A V NET WORTH 4200 AMF CAF NHF 1309743**  
 S A V MAY 2410

SITZ TRAVELER 8180 AMF CAF NHF  
 BOYD FOREVER LADY 8003  
 S A F 598 BANDO 5175 AMF CAC  
 S A V MAY 6269

BARDOLINE OF OLD POST 5  
**ATLASTA RITA 50T 1405350**  
 FISHER AVA 2J

BONNIE CHANCE BARDOLINE 10A  
 BAMBI OF OLD POST  
 STEVENSON FORTUNE 425C AMF CAF NHF  
 KILMAURS KINCHTRY ANN 2G

ACTUAL BW	ADJ. 205D	EPDS			
		BW	WW	YW	MILK
83	647	+2.6 37%	+29 28%	+61 20%	+20 21%

## 84

### ATLASTA NET WORTH 112U-182Y

MALE JBS 182Y 1620533 FEBRUARY 23 2011

S A V NET WORTH 4200 AMF CAF NHF  
**BROOKMORE NETWORK 112U 1441286**  
 BROOKMORE RUBY 20K

S A V 8180 TRAVELER 004 DMF DWF AMF CAF NHF  
 S A V MAY 2410  
 ALBERDA TRAVELER 416 AMF CAF NHF  
 BROOKMORE RUBY 77H

CENTURY TOUCHSTONE 131  
**LINDON LADY WREN 11G 899556**  
 BJ LADY WREN 4'91

GINGER HILL DUSTER 89 AMF CAF NHF  
 WAR SARA 7142 0003  
 CUDLOBE BLACK STAR 92X  
 BJ LADY WREN 83'85

ACTUAL BW	ADJ. 205D	EPDS			
		BW	WW	YW	MILK
86	765	+4.3 35%	+42 23%	+82 14%	+18 13%

## 85

### ATLASTA FOCUS 188Y

MALE JBS 188Y 1620538 FEBRUARY 26 2011

S A F FOCUS OF E R AMF CAF NHF  
**BB ATLASTA FOCUS 46S 1415100**  
 LUKENS 6807 KEM 3956

S A F FAME AMF CAF NHF  
 G D A R FOREVER LADY 246  
 D H D TRAVELER 6807 AMF NHF  
 G D A R KEM 956

WHS PLAYBOY 5B  
**MLA BARBARA 52'95 832876**  
 MLA BARBARA 27'88

MLA PLAYBOY 2Y  
 WINTERING HILLS BLK JANE 40Z  
 LARKSPUR NEW YORK TIMES  
 MLA BARBARA 14'86

ACTUAL BW	ADJ. 205D	EPDS			
		BW	WW	YW	MILK
88	800	+2.5 35%	+39 23%	+65 8%	+18 14%

**All Coming  
 Two-Year-Old Bulls  
 & Females are to be  
 picked up after the sale**

Yearling bulls may be left until Feb. 15/2013  
 but if you take them right after the sale \$100  
 per bull will be deducted from your invoice.

*Terms for Yearling Bulls*

*50% Down Sale Day*

*50% February 15, 2013*

Buyer must insure all bulls left at Atlasta  
 \$2.50 per day after February 15



LOT 83 - ATLASTA NET WORTH 55Y

## 86

### ATLASTA TRAVELER 6068S-215Y

MALE JBS 215Y 1620559 APRIL 01 2011

ALBERDA TRAVELER 416 AMF CAF NHF  
**ROYAL TRAVELER DRCC 6068S 1353251**  
 RALLY KATINKA 229B

D H D TRAVELER 6807 AMF NHF  
 ALBERDA QUEEN KIMBERLY 222  
 N BAR EMULATION EXT AMF CAF NHF  
 HARMONY HILL KATINKA 229

HARMON RANCHERS CHOICE 4860  
**RANCHER'S LADY TIBBIE 37G 911740**  
 BACC LADY TIBBIE 2E

BIG DRY RANCHERS CHOICE 1673  
 HARMON BLACK LADY 2979  
 MVF FUTURE TREND 68C  
 MG'S BLACKBIRD LADY 30'86

ACTUAL BW	ADJ. 205D	EPDS			
		BW	WW	YW	MILK
85	793	+2.9 34%	+36 23%	+60 11%	+12 12%



# Atlasta Angus

# Seriously Black Select Females

## Brookmore Angus

Jack & Barb Hart

Gen. Del., Brookdale, MB R0K 0G0

Ph: 204-476-2607 Cell: 204-476-6696 email: brookmoreangus@mts.net



Jack & Barb

Welcome to the Seriously Black Select Female Sale and what a pleasure it is to be back again this year. We'd like to thank our hosts, Brian and Judy for the opportunity to share our herd genetics with you.

We are excited about our offering of 8 bred heifers, representing four of the industries' leading AI sires. They are safe in calf to some of the top calving ease bulls. Vaccinations are up to date, the Pfizer way.

Should you need any more information on our offering please feel free to give us a call @ 204.476.2607, 204.476.6696 or email at brookmoreangus@mts.net.

Thank you for your continued support.

Jack & Barb Hart



Connealy Consensus 7229



TC Aberdeen 759

### Ref CONNEALY CONSENSUS 7229

Male IMP 9122W 1593730 CAF January 15 2009

KMK ALLIANCE 6595 187 AMF CAF NHF  
**CONNEALY CONSENSUS 15513367**  
 BLINDA OF CONANGA 004

SITZ ALLIANCE 6595 DMF AMF CAF NHF  
 G A R EXT 916 AMF  
 RITO 616 OF 4B20 6807 AMF CAF NHF  
 BLENDA OF CONANGA 129

WOODHILL ADMIRAL 77K AMF CAF NHF  
**BLUE LILLY OF CONANGA 16 CAF 15804270**  
 BLUE CASH OF CONANGA 6020 CAF

S A F FOCUS OF E R AMF CAF NHF  
 WOODHILL LASS 344-1178  
 CONNEALY TIMELINE CAF  
 BLUE TIME OF CONANGA

EPDs: BW: +1.6 90% WW: +71 85% YW: +119 75% Milk: +23 17%  
 TM: +59 CE: +6.0 72% MCE: +10.0 12% SC: +1.02 81%

Connealy Consensus 7229 is a phenomenal new sire, his progeny have topped over 30 of the top sales in the U.S. He is a bull with powerful stature and outstanding phenotype. A bull that produces low birth weights with excellent weaning, yearling and marbling genetics. Sons of Connealy Consensus, have been leased by such A.I. companies as, ABS, Genex and Origen. Fresh new genetics.

### Ref TC ABERDEEN 759

Male IMP 759T 1485453 AMF CAF NHF January 27 2007

B A R EXT TRAVELER 205 AMF CAF NHF  
**C R A BEXTOR 872 5205 608 AMF CAF NHF 1167526**  
 CRA LADY JAYE 608 498 S EASY

N BAR EMULATION EXT AMF CAF NHF  
 B A R QUEEN TRAVELER 3015  
 G A R SLEEP EASY 1009 AMF CAF NHF  
 HHF 917 LADY 975 498

BON VIEW NEW DESIGN 208 AMF CAC NHF  
**TC BLACKBIRD 4034 CAF 14844785**  
 TC BLACKBIRD 1013

B/R NEW DESIGN 036 AMF CAF NHF  
 BON VIEW ERICA 443  
 S A F FAME AMF CAF NHF  
 TC BLACKBIRD 9032

EPDs: BW: +0.8 95% WW: +57 93% YW: +104 90% Milk: +43 52%  
 TM: +72 CE: +10.0 88% MCE: +12.0 45% SC: +0.38 90%

TC Aberdeen 759, a sire of low birth weight, attractive, structurally correct cattle and he ranks in the top 10% of the breed for \$ weaning and \$ beef.

A breed leader for maternal traits, docility and udder quality. An Elite Carcass Merit sire, a bull with performance, style and calving ease.



# Brookmore Angus

## 87 BROOKMORE BELLE 215Y

Female JVJ 215Y 1603716 February 24 2011

CONNELLY ONWARD AMF CAF NHF  
SITZ UPWARD 307R DMF AMF CAF NHF 1385926  
SITZ HENRIETTA PRIDE 81M

CONNELLY LEAD ON AMF CAF NHF  
ALTUNE OF CONANGA 6104  
SITZ VALUE 7097 AMF CAF NHF  
SITZ HENRIETTA PRIDE 1370

SITZ ALLIANCE 6595 DMF AMF CAF NHF  
BROOKMORE BELLE 14R 1293369  
MADSEN'S BELLE 9N

SITZ TRAVELER 8180 AMF CAF NHF  
SITZ BARBARAMERE JET 2698  
BU'S KORONA 3L  
BOTANY ANGUS BELLE 93H

BW: 86 lbs. Adj. 205D: 504 lbs. Adj. 365D: 810 lbs.  
EPDs: BW: +2.7 37% WW: +51 29% YW: +103 29% Milk: +29 21%  
TM: +55 CE: +3.0 29% MCE: +8.0 17%

Brookmore Belle 215Y is a beautiful daughter of the very popular Upward. Upward sons are in huge demand and were a feature in Brookmore's Cattleman's Connection Sale.

Upward combines a high level of weaning and yearling growth. Upwards adds milking ability, frame size as well as added pounds. Note the great mating to Density. Preg checked safe to the A.I. date.  
Bred A.I.: May 2, 2012 o SAV 004 Density 4336 -1266311-.



Lot 87 - Brookmore Belle 215Y

## 88 BROOKMORE BELLE 82Y

Female JVJ 82Y 1603954 January 26 2011

CONNELLY ONWARD AMF CAF NHF  
SITZ UPWARD 307R DMF AMF CAF NHF 1385926  
SITZ HENRIETTA PRIDE 81M

CONNELLY LEAD ON AMF CAF NHF  
ALTUNE OF CONANGA 6104  
SITZ VALUE 7097 AMF CAF NHF  
SITZ HENRIETTA PRIDE 1370

S A V NET WORTH 4200 AMF CAF NHF  
BROOKMORE BELLE 223U 1476223  
MADSEN'S BELLE 9N

S A V 8180 TRAVELER 004 DMF DWF AMF CAF NHF  
S A V MAY 2410  
BU'S KORONA 3L  
BOTANY ANGUS BELLE 93H

BW: 82 lbs. Adj. 205D: 592 lbs. Adj. 365D: 937 lbs.  
EPDs: BW: +2.7 37% WW: +62 28% YW: +118 28% Milk: +30 21%  
TM: +61 CE: +4.0 29% MCE: +9.0 17%

Brookmore Belle 82Y combines the great maternal strengths of both Upward and Net Worth as well as their strong performance. This combined with the great mating to the low birth weight, attractive Aberdeen makes for a potential exciting outcome. Preg checked safe to the A.I. date.

Bred A.I.: April 8, 2012 to TC Aberdeen 759 -1485453-.



Lot 88 - Brookmore Belle 82Y

## 89 BROOKMORE ROSEBUD 35Y

Female JVJ 35Y 1604008 January 14 2011

SITZ TRAVELER 8180 AMF CAF NHF  
S A V FINAL ANSWER 0035 AMF CAF NHF 1061938  
S A V EMULOUS 8145 CAF

G D A R TRAVELER 71 AMF CAF NHF  
SITZ EVERELDA ENTENSE 1137  
BON VIEW BANDO 598 AMF CAC  
S A V SKY EMULOUS 2124

BROOKMORE DENSITY 111T  
BROOKMORE ROSEBUD 263W 1536852  
BROOKMORE ROSEBUD 36P

S A V 004 DENSITY 4336 AMF CAF NHF  
BROOKMORE LADY JANE 224N  
BUSH'S GRAND DESIGN AMF CAF NHF  
BROOKMORE ROSEBUD 72M

BW: 74 lbs. Adj. 205D: 540 lbs. Adj. 365D: 869 lbs.  
EPDs: BW: +1.1 36% WW: +57 27% YW: +99 27% Milk: +22 19%  
TM: +51 CE: +8.0 27% MCE: +9.0 16%

Brookmore Rosebud 35Y is a direct daughter of the breed Icon SAV Final Answer who will go down in history as one of the breeds most prolific and popular bulls of all time. Preg checked safe to the A.I. date.  
Bred A.I.: April 8, 2012 to SAV Bismarck 5682 -1369591-.



Lot 89 - Brookmore Rosebud 35Y

# Seriously Black



Lot 90 - Brookmore Aleta 144Y

## 90 BROOKMORE ALETA 144Y

Female JVJ 144Y 1604006 February 04 2011

SITZ TRAVELER 8180 AMF CAF NHF  
**S A V FINAL ANSWER 0035 AMF CAF NHF 1061938**  
 S A V EMULOUS 8145 CAF

G D A R TRAVELER 71 AMF CAF NHF  
 SITZ EVERELDA ENTENSE 1137  
 BON VIEW BANDO 598 AMF CAC  
 S A V SKY EMULOUS 2124

MOHNEN DYNAMITE 1356 AMF CAF NHF  
**BROOKMORE ALETA 234W 1513998**  
 BROOKMORE ALETA 3P

BALDRIDGE KABOOM K243 KCF CAF  
 MOHNEN JILT 910 CAF  
 BUSHS GRAND DESIGN AMF CAF NHF  
 BROOKMORE ALETA 22M

BW: 76 lbs. Adj. 205D: 549 lbs. Adj. 365D: 816 lbs.  
 EPDs: BW: +2.1 36% WW: +55 28% YW: +97 28% Milk: +19 20%  
 TM: +47 CE: +5.0 29% MCE: +8.0 17%

Brookmore Aleta 144Y is one of those beautiful Final Answer daughters and out of a first calf Mohnen Dynamite female. Note every bull represented in this four-generation pedigree is a top A.I. sire. Preg checked safe to the A.I. date.

Bred A.I.: April 8, 2012 to TC Aberdeen 759 -1485453-.



Lot 91 - Brookmore Aleta 73Y

## 91 BROOKMORE ALETA 73Y

Female JVJ 73Y 1655685 Twin January 25 2011

S A V FINAL ANSWER 0035 AMF CAF NHF  
**S A V PIONEER 7301 AMF CAF NHF 1481377**  
 S A V BLACKBIRD 5297 CAC

SITZ TRAVELER 8180 AMF CAF NHF  
 S A V EMULOUS 8145 CAF  
 BOYD NEW DAY 8005 AMF CAF NHF  
 S A V BLACKBIRD 1082 CAC

S A NEUTRON 377 AMF CAF NHF  
**BROOKMORE ALETA 60N 1186706**  
 BROOKMORE ALETA 30F

S A F NEUTRON AMF CAF NHF  
 S A QUEEN SUSAN 102  
 MINERTS FORTUNE 2000 AMF CAF NHF  
 BROOKMORE ALETA 121D

BW: 68 lbs. Adj. 205D: 592 lbs. Adj. 365D: 1054 lbs.  
 EPDs: BW: +3.4 P WW: +56 P YW: +108 P Milk: +22 P  
 TM: +49 CE: +1.0 P MCE: +7.0 P

Brookmore Aleta 73Y is sired by Pioneer a bull with ideal phenotype that stamps his progeny with eye appeal, sound structure, perfect balance, base width, depth and thickness. Again every sire in this pedigree is a top A.I. bull. Preg checked safe to the A.I. date.

Bred A.I.: April 7, 2012 to TC Aberdeen 759 -1485453-.



Lot 92 - Brookmore Lenlock 155Y

## 92 BROOKMORE LENLOCK 155Y

Female JVJ 155Y 1603925 February 06 2011

S A V FINAL ANSWER 0035 AMF CAF NHF  
**S A V PIONEER 7301 AMF CAF NHF 1481377**  
 S A V BLACKBIRD 5297 CAC

SITZ TRAVELER 8180 AMF CAF NHF  
 S A V EMULOUS 8145 CAF  
 BOYD NEW DAY 8005 AMF CAF NHF  
 S A V BLACKBIRD 1082 CAC

S A V NET WORTH 4200 AMF CAF NHF  
**BROOKMORE LENLOCK 64U 1441488**  
 BROOKMORE LENLOCK 93R

S A V 8180 TRAVELER 004 DMF DWF AMF CAF NHF  
 S A V MAY 2410  
 W C C SPECIAL DESIGN L309 AMF CAF NHF  
 BROOKMORE LENLOCK 140K

BW: 78 lbs. Adj. 205D: 560 lbs. Adj. 365D: 817 lbs.  
 EPDs: BW: +3.4 37% WW: +55 28% YW: +100 29% Milk: +25 17%  
 TM: +53 CE: +3.0 29% MCE: +7.0 14%

Brookmore Lenlock 155Y is a great example of the wonderful Pioneer daughters in production; they have beautiful udders that will please the most discriminating breeder. The service sire is the number one bull in the entire Angus breed for total progeny registrations; he is a low birth weight, early gestation progeny. Preg checked safe to the A.I. date.

Bred A.I.: April 30, 2012 to SA Bismarck 5682 -1369591-.



# Brookmore Angus

## 93 BROOKMORE MAIDEN 63Y

Female JVJ 63Y 1603724 January 23 2011

S A V FINAL ANSWER 0035 AMF CAF NHF  
**S A V PIONEER 7301 AMF CAF NHF 1481377**  
 S A V BLACKBIRD 5297 CAC

SITZ TRAVELER 8180 AMF CAF NHF  
 S A V EMULOUS 8145 CAF  
 BOYD NEW DAY 8005 AMF CAF NHF  
 S A V BLACKBIRD 1082 CAC

MVF STOCKMAN 45H  
**BROOKMORE MAIDEN 114R 1293228**  
 BROOKMORE MAIDEN 155J

TC STOCKMAN 365  
 DODSWOOD ENCHANTRESS MAX-90  
 BROOKMORE EXTRA 99D  
 BROOKMORE MAIDEN 47E

BW: 82 lbs. Adj. 205D: 554 lbs. Adj. 365D: 898 lbs.  
 EPDs: BW: +3.1 37% WW: +55 28% YW: +102 28% Milk: +24 17%  
 TM: +52 CE: +2.0 27% MCE: +7.0 12%

Brookmore Maiden 63Y is one of those ideal type, correct, balanced thick Pioneer daughters with bred in maternal traits who sells bred to the exciting Connealy Consensus 7229. Consensus is the phenomenal new sire whose progeny have topped over 30 of the top sales in the U.S. Preg checked safe to the A.I. date.  
 Bred A.I.: April 7, 2012 to Connealy Consensus 7229 -1593730-



Lot 93 - Brookmore Maiden 63Y

## 94 BROOKMORE SAPPHIRE 31Y

Female JVJ 31Y 1633898 AMF January 13 2011

G A R GRID MAKER AMF CAF NHF  
**S A V BISMARCK 5682 AMF CAF NHF 1369591**  
 S A V ABIGALE 0451

G D A R TRAVELER 044 AMF CAF NHF  
 G A R PRECISION 2536 AMC NHF  
 SCHOENES FIX IT 826 AMF CAF NHF  
 S A V ABIGALE 6062

S A V FINAL ANSWER 0035 AMF CAF NHF  
**BROOKMORE SAPPHIRE 21W AMC 1516082**  
 BROOKMORE SAPPHIRE 48T AMC

SITZ TRAVELER 8180 AMF CAF NHF  
 S A V EMULOUS 8145 CAF  
 BOYD BEEF MAKER 3069 AMC CAF NHF  
 BROOKMORE SAPPHIRE 103L

BW: 66 lbs. Adj. 205D: 640 lbs. Adj. 365D: 914 lbs.  
 EPDs: BW: -0.4 36% WW: +64 28% YW: +108 27% Milk: +28 20%  
 TM: +60 CE: +11.0 30% MCE: +13.0 17%

Brookmore Sapphire 31Y is a daughter of SAV Bismarck, the top bull of the Angus breed for registrations and the dominate sire at the recent U.S. National Junior Heifer Show. Bismarck daughters make beautiful cows with impeccable udders and abundant milk. Preg checked safe to the A.I. date.  
 Bred A.I.: April 7, 2012 o Connealy Consensus 7229 -1593730-



Lot 94 - Brookmore Sapphire 31Y

**Seriously Black Select Female Sale**  
 at 1 pm  
*immediately followed by the*  
**Atlasta Bull Sale**



**S A V Bismarck 5682**  
 Sire of Lot 94 & service sire to Lots 89 & 92

# Seriously Black Select Females

## Remitall West

Bryan, Annette, Emily, Isaac & Zachary Latimer  
 Box 16, Site 2, RR 4, Olds, AB T4H 1T8  
 Bryan's Cell: 403-556-0301 Annette's Cell: 403-556-0607



The Latimer Family at Remitall West

Welcome to the Atlasta Bull and Female Sale. We want to thank Brian & Judy Sutter and the guest consigners for allowing us to be a part of this special Angus event. We are bringing to this sale ten of our very best 2012 born heifer calves. The sires of these heifers Rachis, Wideload and 904U represent a large cross section of our current breeding program. The dams are all productive important members of our cowherd. We fully expect these heifer calves to make sound, excellent replacement and herd building females. Also make note all the sale heifer calves will be tie broke for interested juniors.

Thank you from all of us here at Remitall West we look forward to seeing you sale day. If we can be of any assistance please give us a call.

Bryan, Annette, Emily, Isaac & Zachary



Lot 95 - Remitall W Forever Lady 20Z

### 95 REMITALL W FOREVER LADY 20Z

Female REMI 20Z 1702358 January 24 2012

REMITALL NIGHTHAWK 37N  
 REMITALL H RACHIS 21R AMF NHF OSF 1274555  
 HENDERSON MISSIE 32'02

VERMILION DATELINE 7078 AMF CAF NHF  
 DIAMOND D EVERA 073G  
 O G L BATTLE CRY 427 128  
 HENDERSON MISSIE 2'97

F A R KRUGERRAND 410H AMF CAF NHF  
 REMITALL FOREVER LADY 799R 1349673  
 GDAR FOREVER LADY 0100

KRUGERRAND OF DONAMERE 490 AMF NHF  
 F A R ERIANNA 286F  
 SITZ TRAVELER 5804  
 G D A R FOREVER LADY 5106

BW: 70 lbs. Sept. 8th Wt: 670 lbs.  
 EPDs: BW: +1.2 P+ WW: +45 P+ YW: +102 P Milk: +19 P

A special heifer calf that comes from one of the most dominant cow families in the Angus breed the Forever Ladies. 20Z is a show quality female that is both fancy and broody. Her grandam 0100 is the former \$20,000 high selling female to Justamere Farms, SK. The sire Rachis 21R was the 2007 Edmonton Farmfair Supreme Champion Bull.



GDAR Forever Lady 0100 - Grandam of Lot 95



Remitall H Rachis 21R - Sire of Lots 95 - 98



# Remitall West

## 96 REMITALL W JILL 53Z

Female REMI 53Z 1702331 February 19 2012

REMITALL NIGHTHAWK 37N  
**REMITALL H RACHIS 21R AMF NHF OSF 1274555**  
 HENDERSON MISSIE 32'02

VERMILION DATELINE 7078 AMF CAF NHF  
 DIAMOND D EVERA 073G  
 O G L BATTLE CRY 427 128  
 HENDERSON MISSIE 2'97

REMITALL PILOT 103P  
**ATLASTA WENDY JILL 172U 1473727**  
 ATLASTA WENDY JILL 125M

REMITALL MERCEDES 146M  
 HAPPYVALE NEONIA 27E  
 G D A R OSCAR 711 AMF NHF  
 MLA WENDY JILL 2F'96

BW: 87 lbs. Sept. 8th Wt: 840 lbs.  
 EPDs: BW: +4.8 P+ WW: +52 P+ YW: +94 P Milk: +20 P

A powerful performance heifer that is easy fleshing, deep sided, and good. Her dam 172U is typical of the Pilot daughters exceptional udder quality and very maternal. Sired by the 2007 Edmonton Farmfair Supreme Champion Bull Rachis 21R.



Lot 96 - Remitall W Jill 53Z

## 97 REMITALL W MISTY 36Z

Female REMI 36Z 1702330 February 08 2012

REMITALL NIGHTHAWK 37N  
**REMITALL H RACHIS 21R AMF NHF OSF 1274555**  
 HENDERSON MISSIE 32'02

VERMILION DATELINE 7078 AMF CAF NHF  
 DIAMOND D EVERA 073G  
 O G L BATTLE CRY 427 128  
 HENDERSON MISSIE 2'97

REMITALL RESISTOR 602R  
**REMITALL MISTY 722T 1398947**  
 REMITALL MISTY 515R

REMITALL NETWORK 1N  
 CAYMEN ROSE 57'01  
 KBJ ROGUES BOY 840N  
 KBJ MISTY 79N

BW: 80 lbs. Sept. 8th Wt: 800 lbs.  
 EPDs: BW: +3.9 P+ WW: +44 P+ YW: +91 P Milk: +21 P

You will really appreciate the stoutness, volume and capacity this Rachis daughter carries. Her dam 722T is moderate framed, eye appealing with an ideal udder.



Lot 97 - Remitall W Misty 36Z

## 98 REMITALL W BLACKBIRD 46Z

Female REMI 46Z 1702351 February 15 2012

REMITALL NIGHTHAWK 37N  
**REMITALL H RACHIS 21R AMF NHF OSF 1274555**  
 HENDERSON MISSIE 32'02

VERMILION DATELINE 7078 AMF CAF NHF  
 DIAMOND D EVERA 073G  
 O G L BATTLE CRY 427 128  
 HENDERSON MISSIE 2'97

GDAR QUANTUM 0326  
**REMITALL BLACKBIRD 272M 1123151**  
 REMITALL BLACKBIRD 155K

C H QUANTUM 3330  
 G D A R PRIMROSE LADY 5308  
 MOUNTAIN SIDE EXTRA CLASSY  
 LLB BLACKBIRD 387G

BW: 86 lbs. Sept. 8th Wt: 750 lbs.  
 EPDs: BW: +5.0 P+ WW: +49 P+ YW: +95 P Milk: +17 P

Another very thick made Rachis daughter with more than ample eye appeal. Her dam is a power cow with superior udder quality and milk flow. Rachis is one of the breed's elite proven performance sires that is also siring beautiful productive females.



Lot 98 - Remitall W Blackbird 46Z

# Seriously Black



Remitall Wideload 595U - Sire of Lot 99

## 99 REMITALL W INA 47Z

Female REMI 47Z Reg # Pending February 16 2012

S A V MASTERPIECE 5289  
**REMITALL WIDELoad 595U** AMF CAF NHF OSF MAF 1472177  
 REMITALL NEONIA 237P AMF NHF

REMITALL NIGHTHAWK 37N  
**REMITALL INA 480T 1432197**  
 WILLABAR INA 138N CAC

S A V 8180 TRAVELER 004 AMF CAF NHF DWF  
 S A V QUEEN 8301  
 ROTHS MILLCREEK UNIQUE AMC NHC  
 REMITALL NEONIA 42J

VERMILION DATELINE 7078 AMF CAF NHF  
 DIAMOND D EVERA 073G  
 S A F 598 BANDO 5175 AMF CAC  
 WILLABAR INA 63C

BW 82 lbs. Sept. 8th Wt: 750 lbs.

A super eye appealing, stylish, daughter of Wideload 595U the 2008 Agribition Intermediate Bull Calf Champion and \$41,000 high selling bull from the 2008 Remitall Dispersal Sale. Her dam is a superior milking, great uddered, easy doing female.



Lot 100 - Remitall W Lady 87Z

## 100 REMITALL W LADY 87Z

Female REMI 87Z 1702356 March 11 2012

REMITALL NIGHTHAWK 794R  
**REMITALL WEST NIGHTHAWK 904U** AMF CAF NHF OSF MAF 1493929  
 HAPPYVALE NEONIA 129N CAF

FCR MAGISTRATE 07L  
**LADY OF PEAK DOT 767P 1221011**  
 LADY OF PEAK DOT 248X

REMITALL NIGHTHAWK 37N  
 REMITALL MISS TIBBIE 171M  
 S A F 598 BANDO 5175 AMF CAC  
 TAFIKA 22D NEONIA 96F

CALEDONIAN EXECUTIVE BARDOLENE  
 BATSCHOL LADY 42U  
 S V F RANCHERO  
 LADY OF PDAR 106M

BW: 90 lbs. Sept. 8th Wt: 660 lbs.  
 EPDs: BW: +4.2 P+ WW: +45 P+ YW: +71 P Milk: +20 P

One of the deepest, high volume, easy doing heifers of the Remitall West offering. Her dam is built the same way, a power cow that is also very maternal and productive. The sire 904U has seen heavy pasture service at Remitall West over several years and has performed admirably. Paternally he comes from the same Nighthawk sire line as Remitall H Rachis 21R.



Remitall West Nighthawk 904U - Sire of Lots 101 - 104

## 101 REMITALL W ERICA 97Z

Female REMI 97Z 1702354 March 19 2012

REMITALL NIGHTHAWK 794R  
**REMITALL WEST NIGHTHAWK 904U** AMF CAF NHF OSF MAF 1493929  
 HAPPYVALE NEONIA 129N CAF

REMITALL H RESONATOR 3R  
**REMITALL ERICA 692T 1399058**  
 REMITALL ERICA 771R

REMITALL NIGHTHAWK 37N  
 REMITALL MISS TIBBIE 171M  
 S A F 598 BANDO 5175 AMF CAC  
 TAFIKA 22D NEONIA 96F

REMITALL NIGHTHAWK 37N  
 PERRYVILLE ABBY 13M  
 REMITALL NETWORK 1N  
 REMITALL ERICA 110N

BW: 90 lbs. Sept. 8th Wt: 700 lbs.  
 EPDs: BW: +4.8 P+ WW: +49 P+ YW: +84 P Milk: +24 P

Youngest heifer of the Remitall West offering. This long bodied, thick made individual excels in her performance; check out her 700 lb. Sept. 8th weight with no creep. Line bred to the powerful performance sire Nighthawk 37N, this young heifer is a real genetic gem. Her superior dam 692T is also the dam of the 2012 Calgary Bull Sale Junior Champion Bull.



# Remitall West

## 102 REMITALL W NEONIA 95Z

Female REMI 95Z 1702339 March 18 2012

REMITALL NIGHTHAWK 794R  
**REMITALL WEST NIGHTHAWK 904U** AMF CAF NHF OSF MAF 1493929  
 HAPPYVALE NEONIA 129N CAF

REMITALL NIGHTHAWK 37N  
 REMITALL MISS TIBBIE 171M  
 S A F 598 BANDO 5175 AMF CAC  
 TAFIKA 22D NEONIA 96F

S A V MASTERPIECE 5289  
**REMITALL WEST NEONIA 12W 1493907**  
 REMITALL NEONIA 678T AMF

S A V 8180 TRAVELER 004 DMF DWF AMF CAF NHF  
 S A V QUEEN 8301  
 SITZ TRADITION RLS 8702  
 REMITALL NEONIA 237P AMF NHF

BW: 80 lbs. Sept. 8th Wt: 640 lbs.  
 EPDs: BW: +3.5 P+ WW: +50 P+ YW: +88 P Milk: +19 P

Just a March 18th born heifer but one that is exceptionally feminine, correct and easy on the eyes. Her dam 12W is sired by the 2007 Louisville Grand Champion Bull, Masterpiece 5289. Her great grandam 237P was one of the former renowned donor females at Remitall.



Remitall Eileen 170H - Grandam of Lot 104

## 103 REMITALL W WENDY 73Z

Female REMI 73Z 1704728 March 6 2012

REMITALL NIGHTHAWK 794R  
**REMITALL WEST NIGHTHAWK 904U** AMF CAF NHF OSF MAF 1493929  
 HAPPYVALE NEONIA 129N CAF

REMITALL NIGHTHAWK 37N  
 REMITALL MISS TIBBIE 171M  
 S A F 598 BANDO 5175 AMF CAC  
 TAFIKA 22D NEONIA 96F

REMINGTON RIGHT TIME 124R  
**ATLASTA WENDY 22W 1528025**  
 ATLASTA WENDY 22R

LEACHMAN RIGHT TIME AMF  
 CRESCENT CREEK BLACKCAP 84E  
 SVF SIEBRINGS FOREVER RUSS AMF CAF NHF  
 ATLASTA WENDY 37H

BW 88 lbs. Sept. 8th Wt: 645 lbs.  
 EPDs: BW: +4.8 P+ WW: +45 P+ YW: +75 P Milk: +21 P

A really nice made heifer with style to burn. Her dam 22W comes from the Wendy cow family at Atlasta, one of the top producing families in their program.

## 104 REMITALL W EILEEN 89Z

Female REMI 89Z 1702357 March 14 2012

REMITALL NIGHTHAWK 794R  
**REMITALL WEST NIGHTHAWK 904U** AMF CAF NHF OSF MAF 1493929  
 HAPPYVALE NEONIA 129N CAF

REMITALL NIGHTHAWK 37N  
 REMITALL MISS TIBBIE 171M  
 S A F 598 BANDO 5175 AMF CAC  
 TAFIKA 22D NEONIA 96F

VERMILION DATELINE 7078 AMF CAF NHF  
**REMITALL EILEEN 730R 1297278**  
 REMITALL EILEEN 170H

CONNELLY DATELINE  
 VERMILION BLACKBIRD 5044  
 MOUNTAIN SIDE EXTRA CLASSY  
 HAPPYVALE EILEEN 36C

BW: 80 lbs. Sept. 8th Wt: 530 lbs.  
 EPDs: BW: +3.1 P+ WW: +48 P+ YW: +86 P Milk: +18 P

This fancy middle of March heifer is destined to be a very productive female. She has three females in her pedigree alone that were donor cows in the former Remitall program. Her grandam Eileen 170H is one of those and is the dam of the renown herd sire for the late George Anderson and Remington herds - Remitall Linebacker 204L.



# Atlasta Angus



Lot 105A - Atlasta Erica 70T-37Y



Lot 106B - Atlasta Maggie 19Y

## Selling Choice

A pair of excellent heifers sired by the very popular SAV Net Worth. Both mamas are consistent, top producing young cows. 37Y's young dam, Erica 70T weaned off maybe the best heifer calf at Atlasta this year. Take your pick, you won't be wrong, both have unlimited potential.

### 105A ATLASTA ERICA 70T-37Y

Female JBS 37Y 1620371 January 13 2011

S A V 8180 TRAVELER 004 DMF DWF AMF CAF NHF  
S A V NET WORTH 4200 AMF CAF NHF 1309743  
S A V MAY 2410

SITZ TRAVELER 8180 AMF CAF NHF  
BOYD FOREVER LADY 8003  
S A F 598 BANDO 5175 AMF CAC  
S A V MAY 6269

SVF SIEBRINGS FOREVER RUSS AMF CAF NHF  
ATLASTA ERICA R 70T 1405341  
ATLASTA ERICA 34H

GDAR SVF RUSS 184B  
GDAR SVF FOREVER LADY 214D  
MACC INDIAN NATION 66F  
MLA ELLEN ERICA 34'95

BW: 87 lbs.  
EPDs: BW: +4.9 P WW: +51 P YW: +94 P Milk: +28 P  
TM: +53 CE: +0.0 P MCE: +4.0 P

Due Early February.

Bred A.I.: April 5, 2012 to Connealy Timeline -1039059-

Exposed: April 12 to August 30, 2012 to CU Mighty Focus 20X  
-1592705-

### 105B ATLASTA P. DOTTIE 58Y

Female JBS 58Y 1620384 January 15 2011

S A V 8180 TRAVELER 004 DMF DWF AMF CAF NHF  
S A V NET WORTH 4200 AMF CAF NHF 1309743  
S A V MAY 2410

SITZ TRAVELER 8180 AMF CAF NHF  
BOYD FOREVER LADY 8003  
S A F 598 BANDO 5175 AMF CAC  
S A V MAY 6269

HF MOST WANTED 46H  
LADY OF PEAK DOT 713L 1048496  
LADY OF PEAK DOT 315J

HF WALKER 107E  
HFRF ROSEBUD 72F  
PEAK DOT GENERAL STONE 25G  
LADY OF PEAK DOT 417D

BW: 86 lbs.  
EPDs: BW: +4.0 P WW: +42 P YW: +81 P Milk: +22 P  
TM: +43 CE: +3.0 P MCE: +7.5 P

Due Mid January.

Bred A.I.: April 5, 2012 to LFE BA Lewis 809U -1496729-

Exposed: April 12 to August 30, 2012 to CU Mighty Focus 20X  
-1592705-

## Selling Choice

Two outstanding females sired by two heavily used A.I. sires. 19Y's dam, WHS 9M is one of my favorites, deep volume with good feet and udder, a picture perfect Angus cow. 61Y has a little more frame but has plenty of depth and volume, lots of consistent top end maternal power in both! Enough can't be said of the progeny from Predominant and Net Worth.

### 106A ATLASTA GEMSTONE 61Y

Female JBS 61Y 1620408 January 16 2011

S A V 8180 TRAVELER 004 DMF DWF AMF CAF NHF  
S A V NET WORTH 4200 AMF CAF NHF 1309743  
S A V MAY 2410

SITZ TRAVELER 8180 AMF CAF NHF  
BOYD FOREVER LADY 8003  
S A F 598 BANDO 5175 AMF CAC  
S A V MAY 6269

JDM KRUGERRAND 1'04  
ATLASTA 101B MISSY 75T 1405486  
ATLASTA GEMSTONE 111R

F A R KRUGERRAND 410H AMF CAF NHF  
JDM BLOSSOM 9'98  
A C REMINGTON  
ALSIKE ACRES GEMSTONE 4H

BW: 90 lbs.  
EPDs: BW: +5.1 P WW: +50 P YW: +94 P Milk: +20 P  
TM: +45 CE: -0.5 P MCE: +5.5 P

Due Mid January.

Bred A.I.: April 4, 2012 to Connealy Timeline -1039059-

Exposed: April 12 to August 30, 2012 to CU Mighty Focus 20X  
-1592705-

### 106B ATLASTA MAGGIE 19Y

Female JBS 19Y 1620347 January 10 2011

S A V 8180 TRAVELER 004 DMF DWF AMF CAF NHF  
S A V 004 PREDOMINANT 4438 AMF CAF NHF 1291656  
S A V EMBLYNETTE 1182

SITZ TRAVELER 8180 AMF CAF NHF  
BOYD FOREVER LADY 8003  
S A F 598 BANDO 5175 AMF CAC  
S A V EMBLYNETTE 7319

DURALTA 6446D TRAVELER 5K  
WHS MAGGIE 9M 1140248  
WHS JANE 44E

ALBERDA TRAVELER 416 AMF CAF NHF  
WAYSIDE PRIDE 10H  
MLA PLAYBOY 2Y  
WINTERING HILLS BLK JANE 40Z

BW: 86 lbs.  
EPDs: BW: +2.0 P WW: +40 P YW: +71 P Milk: +19 P  
TM: +38 CE: +6.5 P MCE: +7.0 P

Due Mid January.

Bred A.I.: April 4, 2012 to Connealy Timeline -1039059-

Exposed: April 12 to August 30, 2012 to CU Mighty Focus 20X  
-1592705-



# Seriously Black



Lot 107B - Atlasta CD Blackcap 22Y



Lot 108A - Atlasta Maggie 8Y

## Selling Choice

Two broody, attractive females sired by SAV Heavy Hitter. Check out both dam's pedigrees; the grandsires are our breed's legends. Blackcap 1R's heifer last year was a top seller to Gary & Richard Latimer. This year she has an outstanding bull calf off Net Worth in the sale. All four of our 8180 daughters are can't miss cows. Some very special genetics combined with tons of performance give these two a special future.

### 107A ATLASTA BARBARA PERFECTION 20Y

Female JBS 20Y 1620344 January 10 2011

S A V 8180 TRAVELER 004 DMF DWF AMF CAF NHF  
S A V HEAVY HITTER 6347 AMF CAF NHF 1493580  
S A V BESSIE HEIRESS 1184 CAC

SITZ TRAVELER 8180 AMF CAF NHF  
BOYD FOREVER LADY 8003  
S A F 598 BANDO 5175 AMF CAC  
S A V BESSIE HEIRESS 8067

SITZ TRAVELER 8180 AMF CAF NHF  
BB BARBARA PERFECTION 1N 1251137  
SITZ BARBARA PERFECTION 770

G D A R TRAVELER 71 AMF CAF NHF  
SITZ EVERELDA ENTENSE 1137  
TRAVELER 124 G D A R  
SITZ BARBARA PERFECTION 1018

BW: 85 lbs.  
EPDs: BW: +2.7 P WW: +42 P YW: +78 P Milk: +27 P  
TM: +48 CE: +4.5 P MCE: +9.5 P

Due Mid January.

Bred A.I.: April 4, 2012 to Mytty in Focus -1251205-

Exposed: April 12 to August 30, 2012 to CU Mighty Focus 20X  
-1592705-

### 107B ATLASTA CD BLACKCAP 22Y

Female JBS 22Y 1620356 January 11 2011

S A V 8180 TRAVELER 004 DMF DWF AMF CAF NHF  
S A V HEAVY HITTER 6347 AMF CAF NHF 1493580  
S A V BESSIE HEIRESS 1184 CAC

SITZ TRAVELER 8180 AMF CAF NHF  
BOYD FOREVER LADY 8003  
S A F 598 BANDO 5175 AMF CAC  
S A V BESSIE HEIRESS 8067

CONNELLY DATELINE  
ATLASTA BLACKCAP 1R 1276742  
ATLASTA BLACKCAP 58N

D H D TRAVELER 6807 AMF NHF  
EILA EILA OF CONANGA AMF  
ATLASTA BATTLE CRY RAMMER 45L  
MLA BLACKCAP 20'91

BW: 78 lbs.  
EPDs: BW: +2.4 P WW: +40 P YW: +72 P Milk: +23 P  
TM: +43 CE: +5.5 P MCE: +9.0 P

Due Mid January.

Bred A.I.: April 4, 2012 to LFE BU Lewis 809U -1496729-

Exposed: April 12 to August 30, 2012 to CU Mighty Focus 20X  
-1592705-

## Selling Choice

Two clean fronted, deep-sided bred heifers whose young dams are equally as promising. Maggie 8Y's dam is a typical Net Worth daughter, smooth front ended, along with an excellent udder. Her grandma, WHS Maggie 9M, also produced JBS 19Y in the sale, an exceptional strong cow family.

JBS 90Y's dam is one of our best Remington Right Time 124R daughters. Their sire, Atlasta Cash 44U was a top seller to Remington Cattle. Two females with the looks and pedigree to build your herd!

### 108A ATLASTA MAGGIE 8Y

Female JBS 8Y 1620337 January 06 2011

REMITALL SUPEREVENT 532S  
ATLASTA CASH 44U 1473810  
BB ANNIE 13R

JUSTAMERE 1118 CASH 665P  
KBJ ANNIE 829N  
PEAK DOT FAME 414M  
J L S ANNIE 893

S A V NET WORTH 4200 AMF CAF NHF  
ATLASTA MAGGIE 29W 1527936  
WHS MAGGIE 9M

S A V 8180 TRAVELER 004 DMF DWF AMF CAF NHF  
S A V MAY 2410  
DURALTA 6446D TRAVELER 5K  
WHS JANE 44E

BW: 86 lbs.

Due Mid January

Exposed: March 28 to August 30, 2012 to Atlasta CD Dateline 24X  
-1582828-

### 108B ATLASTA PATRICIA 90Y

Female JBS 90Y 1620453 January 20 2011

REMITALL SUPEREVENT 532S  
ATLASTA CASH 44U 1473810  
BB ANNIE 13R

JUSTAMERE 1118 CASH 665P  
KBJ ANNIE 829N  
PEAK DOT FAME 414M  
J L S ANNIE 893

REMINGTON RIGHT TIME 124R  
ATLASTA 49R MISS RIGHT TIME 14 1528055  
ATLASTA PATRICIA 49R

LEACHMAN RIGHT TIME AMF  
CRESCENT CREEK BLACKCAP 84E  
HF FORMATION 13K  
ATLASTA PATRICIA 220M

BW: 86 lbs.  
EPDs: BW: +3.8 P WW: +41 P YW: +74 P Milk: +21 P  
TM: +42 CE: -3.0 P MCE: +2.0 P

Due Late January.

Exposed: March 28 to August 30, 2012 to Atlasta CD Dateline 24X  
-1582828-

# Atlasta Angus



Lot 109A - Atlasta Elslow 106Y



Lot 110B - Atlasta Alliance 165Y

## Selling Choice

Both mama cows are amongst the best at Atlasta. 135Y's dam, Barbara 133M produced the top seller last year to Glenn Smith in Ontario and also weaned off one of our best heifers this year. Her dam, Barbara 33H is an Elite Cow and is still going strong. These attractive females are sired by a powerful son of Net Worth, purchased from Brookmore Farms.

### 109A ATLASTA ELSLOW 106Y

Female JBS 106Y 1620469 January 24 2011

S A V NET WORTH 4200 AMF CAF NHF  
BROOKMORE NETWORTH 112U 1441286  
BROOKMORE RUBY 20K

S A V 8180 TRAVELER 004 DMF DWF AMF CAF NHF  
S A V MAY 2410  
ALBERDA TRAVELER 416 AMF CAF NHF  
BROOKMORE RUBY 77H

SITZ RAINMAKER 9422  
BB ELSLOW 23P 1240723  
SITZ ELSLOW 203

SITZ RAINMAKER 6169  
SITZ ELLUNAS ELITE 1920  
SITZ RITO 8980  
SITZ ELSLOW 1571

BW: 94 lbs. Adj. 205D: 697 lbs.  
EPDs: BW: +5.7 34% WW: +55 23% YW: +103 13% Milk: +19 13%  
TM: +47 CE: -3.0 20% MCE: +1.0 9%

Due Mid January.

Bred A.I.: April 15, 2012 to LFE BA Lewis 809U -1496729-

Exposed: April 12 to August 30, 2012 to CU Mighty Focus 20X -1592705-

### 109B ATLASTA NET WORTH 112U-135Y

Female JBS 135Y 1620496 February 05 2011

S A V NET WORTH 4200 AMF CAF NHF  
BROOKMORE NETWORTH 112U 1441286  
BROOKMORE RUBY 20K

S A V 8180 TRAVELER 004 DMF DWF AMF CAF NHF  
S A V MAY 2410  
ALBERDA TRAVELER 416 AMF CAF NHF  
BROOKMORE RUBY 77H

ATLASTA A. STOCKMAN 14K  
ATLASTA BARBARA 133M 1131066  
ATLASTA BARBARA 33H

TC STOCKMAN 365  
MLA ERICA 6'94  
MACC INDIAN NATION 66F  
MLA BARBARA 4'95

BW: 90 lbs. Adj. 205D: 681 lbs.  
EPDs: BW: +4.5 34% WW: +44 22% YW: +82 10% Milk: +21 13%  
TM: +43 CE: -2.0 20% MCE: +2.0 9%

Due Early February.

Bred A.I.: April 4, 2012 to LFE BA Lewis 809U -1496729-

Exposed: April 12 to August 30, 2012 to CU Mighty Focus 20X -1592705-

## Selling Choice

These heifers's sire was purchased from Remington Land & Cattle to add his sires powerful maternal genetics to our herd. He hasn't disappointed us. Both his bulls and females are low birth weight and top weaning weight calves. Lots of performance and eye appeal here and besides note the four herd sires in each pedigree. All are cornerstones in their programs and in the Angus breed.

### 110A ATLASTA ELLEN 13Y

Female JBS 13Y 1642352 January 09 2011

LEACHMAN RIGHT TIME AMF  
REMINGTON RIGHT TIME 124R 1291957  
CRESCENT CREEK BLACKCAP 84E

N BAR EMULATION EXT AMF CAF NHF  
LEACHMAN ERICA 0025  
RITO 8094 PRAIRIELANE 2060 AMF  
CRESCENT CREEK BLACKCAP 112A

HF FORMATION 13K  
ATLASTA ELLEN 48R 1276635  
ATLASTA ELLEN 2H

CONNELLY KINCAID  
DURALTA 14C ECHO 32E  
ALSIKE ACRES EX NITRO BLAST 3F  
ATLASTA REBA 6'96

BW: 82 lbs.  
EPDs: BW: +3.3 P WW: +35 P YW: +64 P Milk: +21 P  
TM: +39 CE: -6.0 P MCE: -1.0 P

Due Late January.

Exposed: March 28 to August 30, 2012 to Atlasta CD Dateline 24X -1582828-

### 110B ATLASTA ALLIANCE 165Y

Female JBS 165Y 1620520 February 13 2011

LEACHMAN RIGHT TIME AMF  
REMINGTON RIGHT TIME 124R 1291957  
CRESCENT CREEK BLACKCAP 84E

N BAR EMULATION EXT AMF CAF NHF  
LEACHMAN ERICA 0025  
RITO 8094 PRAIRIELANE 2060 AMF  
CRESCENT CREEK BLACKCAP 112A

SITZ TRADITION RLS 8702  
BB PRIDE 2P 1240731  
SITZ PRIDE 3113

VERMILION DATELINE 7078 AMF CAF NHF  
R L S EISA EVERGREEN 5018  
LEACHMAN TWOPLY 0506  
SITZ PRIDE 1698

BW: 86 lbs. Adj. 205D: 604 lbs.  
EPDs: BW: +3.4 35% WW: +37 26% YW: +69 13% Milk: +16 15%  
TM: +35 CE: -3.0 22% MCE: +4.0 11%

Due Late January.

Exposed: March 28 to August 30, 2012 to Atlasta CD Dateline 24X -1582828-



# Seriously Black



Lot 111A - Atlasta Barbara Jet 60Y



Lot 112A - Atlasta Blackbird 39S-41Y

## Selling Choice

Royal Traveler DRCC 6068S was purchased from Remington Land & Cattle because of his superior genetics in calving ease combined with the top end performance. Fred Taylor also added he was the best carcass bull in their entire sale. His females are attractive and deep bodied with very good udders and great dispositions. These two have the proven genetics top and bottom to become top producing cows.

### 111A ATLASTA BARBARA JET 60Y

Female JBS 60Y 1620406 January 16 2011

ALBERDA TRAVELER 416 AMF CAF NHF  
**ROYAL TRAVELER DRCC 6068S 1353251**  
 RALLY KATINKA 229B

D H D TRAVELER 6807 AMF NHF  
 ALBERDA QUEEN KIMBERLY 222  
 N BAR EMULATION EXT AMF CAF NHF  
 HARMONY HILL KATINKA 229

CONNELLY TIMELINE CAF  
**ATLASTA BB BARB JET 050T 1411491**  
 BB BARBARAMERE JET 20P

CONNELLY DATELINE  
 ENCHANTS FORTUNE CONANGA 6127  
 SITZ ALLIANCE 7002  
 SITZ BARBARAMERE JET 3053

BW: 88 lbs.  
 EPDs: BW: +1.0 P WW: +44 P YW: +78 P Milk: +17 P  
 TM: +39 CE: +8.0 P MCE: +8.0 P

Due Mid January.

Exposed: March 28 to August 30, 2012 to Atlasta CD Dateline 24X -1582828-

### 111B ATLASTA BLACKCAP 51T-96Y

Female JBS 96Y 1620464 January 21 2011

ALBERDA TRAVELER 416 AMF CAF NHF  
**ROYAL TRAVELER DRCC 6068S 1353251**  
 RALLY KATINKA 229B

D H D TRAVELER 6807 AMF NHF  
 ALBERDA QUEEN KIMBERLY 222  
 N BAR EMULATION EXT AMF CAF NHF  
 HARMONY HILL KATINKA 229

TC FREEDOM 104 AMF CAF NHF  
**ATLASTA BLACKCAP FREEDOM 51T 1405373**  
 ATLASTA BLACKCAP 3L

CONNELLY FOREFRONT AMF CAF NHF  
 T C RUBY 9095 CAF  
 G D A R OSCAR 711 AMF NHF  
 MLA BLACKCAP 20'91

BW: 85 lbs.  
 EPDs: BW: +3.4 P WW: +39 P YW: +70 P Milk: +17 P  
 TM: +36 CE: +4.5 P MCE: +6.5 P

Due Late January.

Exposed: March 28 to August 30, 2012 to Atlasta CD Dateline 24X -1582828-

## Selling Choice

I can't say enough for the results in both bulls and females, what Remitall Superevent 532S has produced since we purchased him from the Latimers. The 3/4 sisters might be the best in the sale. All his first and second calvers are attractive, good uddered, long, deep and are excellent mother cows. All progeny are at the top at weaning time. Both dam's sire is a breed legend, Sitz Alliance 6595, known for his powerful maternal traits. A pair of the best!

### 112A ATLASTA BLACKBIRD 39S-41Y

Female JBS 41Y 1620380 January 14 2011

JUSTAMERE 1118 CASH 665P  
**REMITALL SUPEREVENT 532S 1338191**  
 KBJ ANNIE 829N

EXAR BIG TIMBER 1118  
 REMITALL KEEPSAKE 143L  
 LLB TRAVELER 297K  
 KBJ ANNIE 438L

SITZ ALLIANCE 6595 DMF AMF CAF NHF  
**BB BLACKBIRD 39S 1362470**  
 BJ BLACKBIRD 8D

SITZ TRAVELER 8180 AMF CAF NHF  
 SITZ BARBARAMERE JET 2698  
 PROSPERITY ACCLAIM 158  
 BJ BLACKBIRD 1B

BW: 93 lbs.  
 EPDs: BW: +4.4 P WW: +53 P YW: +88 P Milk: +25 P  
 TM: +51 CE: -2.5 P MCE: +2.5 P

Due Mid January.

Bred A.I.: April 4, 2012 to Leachman Right Time -779510-  
 Exposed: April 12 to August 30, 2012 to CU Mighty Focus 20X -1592705-

### 112B ATLASTA BLACKBIRD 94Y

Female JBS 94Y 1620450 January 20 2011

JUSTAMERE 1118 CASH 665P  
**REMITALL SUPEREVENT 532S 1338191**  
 KBJ ANNIE 829N

EXAR BIG TIMBER 1118  
 REMITALL KEEPSAKE 143L  
 LLB TRAVELER 297K  
 KBJ ANNIE 438L

SITZ ALLIANCE 6595 DMF AMF CAF NHF  
**BB BLACKBIRD 33S 1362466**  
 SITZ BLACKBIRD 2723

SITZ TRAVELER 8180 AMF CAF NHF  
 SITZ BARBARAMERE JET 2698  
 SITZ TRAVELER 7641  
 SITZ BLACKBIRD 2451

BW: 92 lbs.  
 EPDs: BW: +4.8 P WW: +49 P YW: +87 P Milk: +27 P  
 TM: +52 CE: -3.5 P MCE: +2.5 P

Due Mid January.

Bred A.I.: April 4, 2012 to Leachman Right Time -779510-  
 Exposed: April 12 to August 30, 2012 to CU Mighty Focus 20X -1592705-

# Atlasta Angus



Lot 113B - Atlasta Blackcap 112Y



Lot 114B - Atlasta Eisa Evergreen 130Y

## Selling Choice

Justamere Cash was a champion in the showing and has passed those qualities on in these two young females. All his daughters have eye appeal, are easy fleshing, are moderately framed with good udders and feet. These are no exception, both dams trace back to generations of rock solid, consistent cow families. Tons of maternal strength, combined with some very proven bull power behind these two classy females.

### 113A ATLASTA ERICA 50N-44Y

Female JBS 44Y 1620374 January 14 2011

EXAR BIG TIMBER 1118  
JUSTAMERE 1118 CASH 665P 1222961  
REMITALL KEEPSAKE 143L

DMM STOCKMAN 106J  
ATLASTA ERICA 50N 1153329  
MLA ERICA 6'94

NORTHERN IMPROVEMENT 4480 GF AMF CAF NHF  
WK TILLIE 7277  
SITZ ALLIANCE 6595 DMF AMF CAF NHF  
REMITALL KEEPSAKE 103J

TC STOCKMAN 365  
DMM MISS ESSENCE 22B  
G D A R WHAM 021 AMF CAF NHF  
MLA ERICA 4Y

BW: 85 lbs.  
EPDs: BW: +3.6 P WW: +38 P YW: +71 P Milk: +25 P  
TM: +44 CE: -1.0 P MCE: +5.0 P

Due Late January.

Exposed: March 28 to August 30, 2012 to Atlasta CD Dateline 24X  
-1582828-

### 113B ATLASTA BLACKCAP 112Y

Female JBS 112Y 1620386 January 15 2011

EXAR BIG TIMBER 1118  
JUSTAMERE 1118 CASH 665P 1222961  
REMITALL KEEPSAKE 143L

ATLASTA BATTLE CRY RAMMER 45L  
ATLASTA BLACKCAP 58N 1168145  
MLA BLACKCAP 20'91

NORTHERN IMPROVEMENT 4480 GF AMF CAF NHF  
WK TILLIE 7277  
SITZ ALLIANCE 6595 DMF AMF CAF NHF  
REMITALL KEEPSAKE 103J

O G L BATTLE CRY 427 128  
MLA ELLEN ERICA 4'86  
ARGWEN ROCKY 15Y  
MLA BLACKCAP 7'86

BW: 85 lbs.  
EPDs: BW: +3.7 P WW: +34 P YW: +63 P Milk: +19 P  
TM: +36 CE: -1.5 P MCE: +5.0 P

Due Early February.

Exposed: March 28 to August 30, 2012 to Atlasta CD Dateline 24X  
-1582828-

## Selling Choice

These 3/4 sisters are sweet, clean fronted, moderately framed females. Both of their grandma's were exceptional cows at Sitz Angus. Their sire, an EXT son was used for his easy fleshing and top maternal genetics, along with excellent carcass numbers. 56Y and 130Y's sire, Atlasta Forever Russ 37S, co-owned with Dale Bushfield consistently leaves attractive smooth fronted long sided females with good feet and udders. You won't go wrong with either here!

### 114A ATLASTA LADY PRIDE 56Y

Female JBS 56Y 1620390 January 15 2011

SVF SIEBRINGS FOREVER RUSS AMF CAF NHF  
ATLASTA FOREVER RUSS 37S 1341988  
ATLASTA ERICA 34H

SITZ PCAR EMULATION EXT 8668  
BB LADY PRIDE 7P 1240726  
S L S LADY PRIDE 2803

GDAR SVF RUSS 184B  
GDAR SVF FOREVER LADY 214D  
MACC INDIAN NATION 66F  
MLA ELLEN ERICA 34'95

N BAR EMULATION EXT AMF CAF NHF  
SITZ ELSLOW 546  
SITZ TRAVELER 7641  
S L S LADY PRIDE 1611

BW: 93 lbs.  
EPDs: BW: +4.2 P WW: +39 P YW: +73 P Milk: +17 P  
TM: +37 CE: +1.0 P MCE: +3.0 P

Due Late January.

Bred A.I.: April 4, 2012 to Little Valley Net Worth 23Y -1602026-.  
Exposed: April 12 to August 30, 2012 to CU Mighty Focus 20X  
-1592705-

### 114B ATLASTA EISA EVERGREEN 130Y

Female JBS 130Y 1620493 February 03 2011

SVF SIEBRINGS FOREVER RUSS AMF CAF NHF  
ATLASTA FOREVER RUSS 37S 1341988  
ATLASTA ERICA 34H

SITZ PCAR EMULATION EXT 8668  
BB EISA EVERGREEN 18P 1246433  
SITZ EISA EVERGREEN 2313

GDAR SVF RUSS 184B  
GDAR SVF FOREVER LADY 214D  
MACC INDIAN NATION 66F  
MLA ELLEN ERICA 34'95

N BAR EMULATION EXT AMF CAF NHF  
SITZ ELSLOW 546  
G D A R TRAVELER 71 AMF CAF NHF  
SITZ EISA EVERGREEN 606

BW: 92 lbs. Adj. 205D: 628 lbs.  
EPDs: BW: +4.3 35% WW: +41 25% YW: +74 11% Milk: +23 13%  
TM: +44 CE: -1.0 20% MCE: +2.0 9%

Due Mid January.

Bred A.I.: April 6, 2012 to Little Valley Net Worth 23Y -1602026-  
Exposed: April 12 to August 30, 2012 to CU Mighty Focus 20X  
-1592705-



# Seriously Black



Lot 115A - Atlasta Pride 116Y



Lot 116B - Atlasta Elslow 109Y

## Selling Choice

Waching Final Answer 6T was purchased from Peter and Vicki Bradford, for some calving ease combined with some extra bone, volume and pure power. He has passed these traits to his females. They are moderate, larger framed, with tons of capacity combined with good udders and disposition. Moderate birth weight and top end weaning weights here. Brother Darryl bought a very good son last year.

### 115A ATLASTA PRIDE 116Y

Female JBS 116Y 1620476 January 26 2011

REMITALL RANCH 576R  
WACHING FINAL ANSWER 6T 1370504  
WACHING BLACK EDELLA 5024

S A V FINAL ANSWER 0035 AMF CAF NHF  
HAPPYVALE IDELETTE 6N  
WACHING BLACK NITRO 270M  
WACHING UNIVERSAL EDELLA 339

CONNEALY TIMELINE CAF  
BB PRIDE 15S 1362491  
BB PRIDE 2P

CONNEALY DATELINE  
ENCHANTS FORTUNE CONANGA 6127  
SITZ TRADITION RLS 8702  
SITZ PRIDE 3113

BW: 90 lbs. Adj. 205D: 682 lbs.  
EPDs: BW: +4.4 34% WW: +49 23% YW: +87 10% Milk: +19 10%  
TM: +44 CE: -3.0 21% MCE: +3.0 7%

Due Mid February.

Bred A.I.: April 4, 2012 to Little Valle Net Worth 23Y -1602026-  
Exposed: April 12 to August 30, 2012 to CU Mighty Focus 20X  
-1592705-

### 115B ATLASTA BLACKCAP 44S-158Y

Female JBS 158Y 1620517 February 11 2011

REMITALL RANCH 576R  
WACHING FINAL ANSWER 6T 1370504  
WACHING BLACK EDELLA 5024

S A V FINAL ANSWER 0035 AMF CAF NHF  
HAPPYVALE IDELETTE 6N  
WACHING BLACK NITRO 270M  
WACHING UNIVERSAL EDELLA 339

B/R NEW FRONTIER 095 AMF CAF NHF  
ATLASTA BLACKCAP 44S 1341947  
MLA BLACKCAP 51'93

B/R NEW DESIGN 036 AMF CAF NHF  
WHITE FENCE PRIDE H1  
GET-A-LONG ALAMO 132  
MLA BLACKCAP 24'83

BW: 86 lbs. Adj. 205D: 745 lbs.  
EPDs: BW: +3.4 34% WW: +46 22% YW: +80 9% Milk: +18 10%  
TM: +41 CE: -2.0 20% MCE: +1.0 7%

Due Early February.

Bred A.I.: April 4, 2012 to Little Valley Net Worth 23Y -1602026-  
Exposed: April 12 to August 30, 2012 to CU Mighty Focus 20X  
-1592705-

## Selling Choice

From different herd sires, these two heifers have a little more frame combined with some extra capacity and length. 70Y's dam is sired by Sitz Alliance 6595, legendary for his powerful maternal traits and 109Y's dam is a Mytty in Focus, popular for his calving ease and maternal numbers. Both dams are deep bodied, moderately framed females with excellent udders. Note 109Y's dam's mama BB Elslow 23P, has an awesome heifer Elslow 106Y in our sale selling as Lot 109A.

### 116A ATLASTA BARDOLIA 70Y

Female JBS 70Y 1620417 January 17 2011

JUSTAMERE 1118 CASH 665P  
REMITALL SUPEREVENT 532S 1338191  
KBJ ANNIE 829N

EXAR BIG TIMBER 1118  
REMITALL KEEPSAKE 143L  
LLB TRAVELER 297K  
KBJ ANNIE 438L

SITZ ALLIANCE 6595 DMF AMF CAF NHF  
BB BARDOLIA 16S 1362476  
BARDOLIA OF PEAK DOT 413N

SITZ TRAVELER 8180 AMF CAF NHF  
SITZ BARBARAMERE JET 2698  
STEVENSON BRUNO 6371  
BARDOLIA OF PEAK DOT 627F

BW: 85 lbs.  
EPDs: BW: +3.4 P WW: +54 P YW: +94 P Milk: +27 P  
TM: +54 CE: +1.0 P MCE: +4.5 P

Due Mid January.

Bred A.I.: April 4, 2012 LFE BA Lewis 809U -1496729-  
Exposed: April 12 to August 30, 2012 to CU Mighty Focus 20X  
-1592705-

### 116B ATLASTA ELSLOW 109Y

Female JBS 109Y 1620471 January 25 2011

REMITALL RANCH 576R  
WACHING FINAL ANSWER 6T 1370504  
WACHING BLACK EDELLA 5024

S A V FINAL ANSWER 0035 AMF CAF NHF  
HAPPYVALE IDELETTE 6N  
WACHING BLACK NITRO 270M  
WACHING UNIVERSAL EDELLA 339

MYTTY IN FOCUS AMF CAF NHF  
BB ELSLOW 2S 1364908  
BB ELSLOW 23P

S A F FOCUS OF E R AMF CAF NHF  
MYTTY COUNTESS 906  
SITZ RAINMAKER 9422  
SITZ ELSLOW 203

BW: 85 lbs. Adj. 205D: 752 lbs.  
EPDs: BW: +3.1 34% WW: +52 23% YW: +92 10% Milk: +24 10%  
TM: +50 CE: +1.0 21% MCE: +5.0 7%

Due Late February.

Bred A.I.: April 6, 2012 to Little Valley Net Worth 23Y -1602026-  
Exposed: April 12 to August 30, 2012 to CU Mighty Focus 20X  
-1592705-

# Atlasta Angus



Lot 117B - Atlasta Barbara 95Y

## Selling Choice

These two classy heifers are granddaughters to one of the greatest sires our breed has produced, DHD Traveler 6807. His son Atlasta BB Traveler 047T, consistently leaves attractive, easy fleshing females with perfect udders and good disposition. Both young dams descend from six and seven generations of exceptional productive cow families. Atlasta Wendy 77Y is one of five sisters in our herd. Barbara 95Y, great dam, Barbara 133M has a top heifer 135Y in our sale. Generations of two of our most productive cow families combined with Traveler 6807. Leachman Right Time and New Design 036 in their direct genetics give these two a head start to a solid future.

### **117A ATLASTA WENDY 25U- 77Y**

Female JBS 77Y 1649128 January 18 2011

D H D TRAVELER 6807 AMF NHF  
**ATLASTA BB TRAVELER 6807 047T 1417947**  
 LEACHMAN WENDY 9031

Q A S TRAVELER 23-4 AMF CAF NHF  
 BEMINDFUL MAID D H D 0807  
 LEACHMAN PARAGON  
 LEACHMAN WENDY 1077

B/R NEW FRONTIER 095 AMF CAF NHF  
**ATLASTA WENDY 25U 1473661**  
 MLA WENDY 1'94

B/R NEW DESIGN 036 AMF CAF NHF  
 WHITE FENCE PRIDE H1  
 G D A R WHAM 021 AMF CAF NHF  
 MLA WENDY 20'87

BW: 76 lbs.  
 EPDs: BW: +2.5 P WW: +32 P YW: +58 P Milk: +12 P  
 TM: +28 CE: +3.5 P MCE: +5.0 P

Due Mid January.  
 Exposed: March 28 to August 30, 2012 to Atlasta CD Dateline 24X  
 -1582828-

### **117B ATLASTA BARBARA 95Y**

Female JBS 95Y 1649131 January 20 2011

D H D TRAVELER 6807 AMF NHF  
**ATLASTA BB TRAVELER 6807 047T 1417947**  
 LEACHMAN WENDY 9031

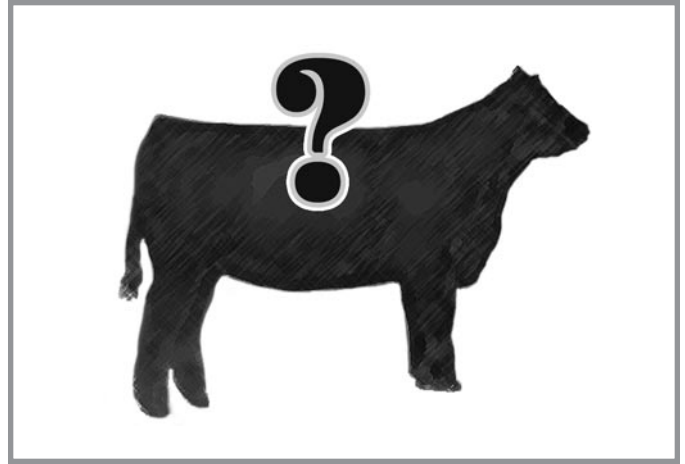
Q A S TRAVELER 23-4 AMF CAF NHF  
 BEMINDFUL MAID D H D 0807  
 LEACHMAN PARAGON  
 LEACHMAN WENDY 1077

REMINGTON RIGHT TIME 124R  
**ATLASTA BARBARA 188W 1528066**  
 ATLASTA BARBARA 66R

LEACHMAN RIGHT TIME AMF  
 CRESCENT CREEK BLACKCAP 84E  
 HF FORMATION 13K  
 ATLASTA BARBARA 133M

BW: 86 lbs.  
 EPDs: BW: +3.2 P WW: +35 P YW: +61 P Milk: +14 P  
 TM: +32 CE: -1.5 P MCE: +2.5 P

Due Early February.  
 Exposed: March 28 to August 30, 2012 to Atlasta CD Dateline 24X  
 -1582828-



## Mystery Lot

**Pick of the  
 2013 Atlasta  
 Heifer Calves**

**Every one born available  
 Selection must be made  
 by August 1/13**

*Thanks to Dyce & Dave Bolduc for purchasing last year's  
 pick of the Atlasta 2012 heifers, and Tanya Belsham  
 and Bryan Latimer for being runner up bidders.*

*Thanks to Jack and Barb Hart for purchasing  
 the pick of the Atlasta 2011 heifers.*



***A sincere Thank You  
 for your interest***

***Safe travels & Best of the Holidays***

***- Brian & Judy***



# Seriously Black

## Atlasta Service Sires



### Ref LFE BA LEWIS 809U

Male LFE 809U 1496729 December 26 2008

SITZ TRAVELER 8180 AMF CAF NHF  
S A V FINAL ANSWER 0035 AMF CAF NHF 1061938  
S A V EMULOUS 8145 CAF

SPRUCE VIEW EILEENMERE 74N  
SOUTHERN OX ERICA 51T 1403097  
SOUTHERN OX ERICA 66J

BW: 80 lbs. Adj. 205D: 780 lbs. Adj. 365D: 1354 lbs.  
EPDs: BW: +1.3 42% WW: +47 31% YW: +80 25% Milk: +24 20%  
TM: +48 CE: +6.0 33% MCE: +7.0 17%

LFE BA Lewis 809U is an excellent son of the calving ease and maternal great Final Answer. His dam is one of the top producing cows at Lewis Farms, a powerful individual.

G D A R TRAVELER 71 AMF CAF NHF  
SITZ EVERELDA ENTENSE 1137  
BON VIEW BANDO 598 AMF CAC  
S A V SKY EMULOUS 2124

BCC EILEENMERE LAD 23H  
SPRUCE VIEW BLACKBIRD 95E  
W A R JUMBO 1438  
SOUTHERN OX ERICA 175C



### Ref ATLASTA CD DATELINE 24X

Male JBS 24X 1582928 January 11 2010

D H D TRAVELER 6807 AMF NHF  
CONNELY DATELINE 894782  
EILA EILA OF CONANGA AMF

SITZ TRAVELER 8180 AMF CAF NHF  
BB BARBARA PERFECTION 12N 1251138  
SITZ BARBARA PERFECTION 770

BW: 86 lbs. Adj. 205D: 734 lbs.  
EPDs: BW: +1.5 36% WW: +37 28% YW: +71 22% Milk: +17 23%  
TM: +36 CE: +8.0 30% MCE: +11.0 20%

Atlasta CD Dateline 24X is a direct son of the great breeding Connealy Dateline. 24X possesses a powerful pedigree containing 6807, Scotch Cap, 8180 and Traveler 124. A great combination of calving ease, performance and maternal strength.

Q A S TRAVELER 23-4 AMF CAF NHF  
BEMINDFUL MAID D H D 0807  
SCOTCH CAP AMF CAF NHF  
ELLA EILA OF CONANGA

G D A R TRAVELER 71 AMF CAF NHF  
SITZ EVERELDA ENTENSE 1137  
TRAVELER 124 G D A R  
SITZ BARBARA PERFECTION 1018



### Ref CU MIGHTY FOCUS 20X

Male CU 20X 1592705 January 30 2010

S A F FOCUS OF E R AMF CAF NHF  
MYTTY IN FOCUS AMF CAF NHF 1251205  
MYTTY COUNTESS 906

KCS NEW FRONTIER 095-5601  
CU K FRONTIER 050U OF 081 1485383  
C U CONNIE 081K OF 620

BW: 72

S A F FAME AMF CAF NHF  
G D A R FOREVER LADY 24E  
SITZ ALLIANCE 6595 DMF AMF CAF NHF  
BALDRIDGE COUNTESS 357

B/R NEW FRONTIER 095 AMF CAF NHF  
LEACHMAN BLACKCAP 7062  
C A R TRAVELER 881  
C U GOLD 620F OF 332C

### Ref LITTLE VALLEY NET WORTH 23Y

Male VAW 23Y 1602026 January 16 2011

S A V 8180 TRAVELER 004 DMF DWF AMF CAF NHF  
S A V NET WORTH 4200 AMF CAF NHF 1309743  
S A V MAY 2410

WACHING TRADITION 309  
LVA TRENDY MADGE 636 1361484  
LVA MADGE 14J

BW: 93 lbs. Adj. 205D: 682 lbs. Adj. 365D: 1434 lbs.  
EPDs: BW: +4.2 35% WW: +46 26% YW: +88 24% Milk: +18 19%  
TM: +41 CE: +1.0 26% MCE: +5.0 15%

SITZ TRAVELER 8180 AMF CAF NHF  
BOYD FOREVER LADY 8003  
S A F 598 BANDO 5175 AMF CAC  
S A V MAY 6269

SOUTHERN TRADITION 65H  
WACHING DAKOTA DAIQUARI 21B  
DWAJO LANCER 7F  
VAW MADGE 30C



### LEACHMAN RIGHT TIME

EPDs: BW: +2.1 WW: +42 YW: +79 Milk: +19 TM: +40 SC: +0.28 CE: +4.0 MCE: +9.0

# Atlasta Angus

## *Notes*



## Terms & Conditions

**CATTLE INSPECTION:** All carry permanent identity tags, corresponding to Sale Lot Numbers. All shall be available for inspection prior to sale.

**ALL CATTLE ARE SOLD:** Subject to such tests as required for export under regulations of the Health of Animals Branch, Department of Agriculture for Canada - those corresponding to Bureau of Animal Industry requirements.

**BREEDING GUARANTEE:** All cattle are sound and sold with a responsible breeder guarantee of satisfaction. In the event of any unlikely dispute, the regular terms and conditions, standard with the Canadian Aberdeen Angus Association shall apply.

**HOLDING AND SHIPMENTS:** Approximately one week is required for export transfers and other documents to be processed. Export animals will be held at no charge and under excellent care. Joint export shipping arrangements to attain minimum shipping cost will gladly be made by the sale management if instructions to that effect are provided to clerk of the sale when settlement is made.

**MAIL BIDS:** May be entrusted in complete confidence to any of the Sale Staff listed or to Douglas J. Henderson & Associates Ltd.

**INSURANCE:** Ownership risk to purchaser commences when the Auctioneer's hammer falls. Livestock coverage will be available at the clerk's desk from the appointed representatives on sale day, also from the sale management at any time.

**TERMS OF SALE:** Are cash or cheque at par, payable to Clerks of the Sale on Sale Day. U.S. Funds will be accepted at the current rate of exchange. No release will be given until satisfactory settlement has been made. We reserve the right to withhold animals from export shipment for whom payments have not been received prior to departure times.

**ALL PERSONS** who attend the Sale do so at their own risk, and the Owners, Sale Management and Sale Staff assume no liability, legal or otherwise, for property loss or for any accidents that may occur.





**HEAD TO GRANDPA'S FOR THE SALE!**



*DjH* Douglas J. Henderson  
& Associates Ltd.

P.O. Box 5900, Lacombe, Alberta T4L 1X4



RETURN POSTAGE GUARANTEED  
PORT DE RETOUR GARANTI

# ATLASTA ANGUS

*7<sup>th</sup>* Annual  
Bull Sale

&  
Seriously Black  
Select Female Sale



**Saturday**  
**December 8, 2012**  
*At the Farm, Sylvan Lake, Alberta*