

Atlasta Angus

9th Annual Bull Sale

&
Seriously Black
Select Female Sale

Saturday

December 13
2014

1 pm at the Farm - Sylvan Lake, Alberta

In Memory of
Duane Parsonage



October 25, 1955 - May 14, 2014

—
Duane's friends will never forget him,
his enthusiasm was infectious.
He was a great friend of the cattle industry.

The bull on the cover of this catalog
was co-owned by Duane, Brian & Judy.

—

Schedule of Events

FRIDAY, DECEMBER 12

*Afternoon - Cattle Viewing
Social Evening to Follow*

SATURDAY, DECEMBER 13

Join us for a pre-Christmas Lunch

1 PM

**Seriously Black
Select Female Sale**

immediately followed by the

**9th Annual
ATLASTA ANGUS
BULL SALE**



Atlasta Angus

9th

Annual Bull Sale

82 Angus
Bulls & 39
Females Sell

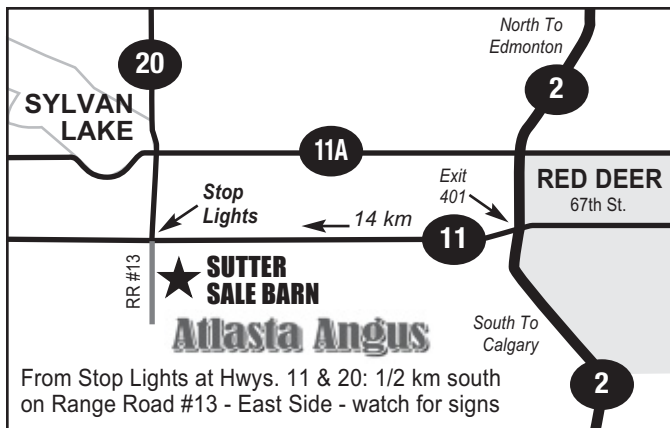
SATURDAY, DECEMBER 13, 2014

At the Farm, Sylvan Lake, Alberta

Seriously Black Select Female Sale

STARTS AT 1 PM to be followed immediately by the **BULL SALE**

DIRECTIONS TO ATLASTA ANGUS



SALE DAY PHONES

Doug: 403-350-8541

Brian: 403-505-7073

HOTEL HEADQUARTERS COMFORT INN & SUITES

13 Beju Industrial Drive, Sylvan Lake, AB T4S 1J4
PH: 403-887-7884

Be sure to ask for the Atlasta/Seriously Black Room Rate

Other Option

COMFORT INN & SUITES

6846 66th St., Red Deer, Alberta T4P 3T5
PH: 403-348-0025

Atlasta Angus

**BRIAN & JUDY SUTTER
& FAMILY**

Sylvan Lake, Alberta

Ph/Fax: 403-887-4147 Cell: 403-505-7073

TERMS ON YEARLING BULLS

50% Down - 50% Feb. 15
Details page 2

AUCTIONEER:

Don Raffan 250-546-9420; Cell: 250-558-6789

SALE STAFF:

Peter Raffan 250-260-0758

Dean Edge 403-704-0280

Grant Ellefson 403-501-9707

BUYERS REPRESENTATIVES:

Danny Daines Cell: 403-391-0580

Work: 403-227-3166 Home: 403-227-1075

Kyle Daines 403-598-2360

Peter Raffan Cell: 250-260-0758 Office: 250-546-9420

Don Raffan Cell: 250-558-6789 Office: 250-546-9420

Maury Grant Cell: 250-558-9099 Home: 250-503-5535

Clayton Cole 403-845-4042

Bobbie Miller Jr. 403-358-1393

Brody Malek 306-317-7714

Colin McNiven 403-793-1699

Dave Saretsky Cell: 403-896-9616

Roger Peters 403-828-9815

Online Bidding

via VIV - Details page 3

Craig Jacklin 403-783-1453

SPECIAL REPRESENTATIVES:

Rob Smith, CEO, Canadian Angus Association

Brian Good - Director, Canadian Angus Association Field Services

Corinne Gibson, President, Canadian Angus Association

Dave Callaway, Angus World 403-549-2234

CATTLE PHOTOGRAPHY: GRANT ROLSTON

BACK COVERS: JORDON PHOTOGRAPHY

SALE MANAGED BY

DJH
**Douglas J. Henderson
& Associates Ltd.**

Doug & Linda Henderson

P.O. Box 5900, Lacombe, Alberta T4L 1X4

Phone: (403) 782-3888 Fax: (403) 782-3849 Cell: (403) 350-8541

Brody Gardner 306-317-7714

email: djhenderson@platinum.ca website: www.hendersoncattle.com

9th **Atlasta Angus**
Annual Bull Sale

BRIAN & JUDY SUTTER & FAMILY
RR 1, Red Deer, AB T4N 5E1
Ph/Fax: 403-887-4147 Cell: 403-505-7073

Welcome from Atlasta

It is my pleasure to welcome you to the 9th Annual Atlasta Angus Bull Sale & Seriously Black Select Female Sale.

The past year has seen commercial calf prices go to a premium and then rise to record levels. Butcher cows and bulls also have kept pace along with feedlot steers. The question being asked is: are the prices going to stay the same and will this trend continue. Common sense tells me it will in the immediate future and even the next two to three years. Cattle numbers, especially younger breeding south of the border, have dropped traumatically in the past three to four years. The need for prime beef in the U.S. market is incredibly high and along with new International markets like China, our packing plants are extremely busy.

As a result, the need for quality, top end breeding cattle is imperative for the cattle industry in our country. Our bull calves came home off the cows looking good with the majority weaning off of over 3 lbs. a day. Sitz Upward, Connealy Consensus, Rito 9969, Zorzal and Final Answer progeny headline our bull roster.

Approximately 70 coming yearlings, 15 coming two year olds and 26 select bred heifers are on offer, Bryan and Annette Latimer, Remitall West and Jack and Barb Hart, Brookmore Angus will again bring a very select group of heifer calves and bred heifers.

I think the sale offering will satisfy both the commercial and purebred needs. Feel free to call or stop by the farm prior to sale day. Come for viewing Friday the 12th or we look forward to seeing you sale day.

Brian & Judy
Atlasta Farms



*Judy & Jack,
Sage, Brian, Summer & Owen*

WE WILL WINTER YEARLING BULLS TO FEBRUARY 15

50% Down Sale Day - 50% February 15, 2015

**\$100 OFF YEARLING BULLS
TAKEN RIGHT AFTER THE SALE**

Buyer must insure all bulls left at Atlasta
\$2.50 per day after February 15

COMING TWO YEAR OLD BULLS & FEMALES TO GO RIGHT AFTER THE SALE

SATISFACTION GUARANTEED

with our Sight Unseen Purchase Plan - Call Brian or Doug for Details



ONLINE BIDDING

- Can't make the sale?
Take advantage of
- Live streaming
 - Live audio
 - Live video
 - Real time bidding

Vold Jones Vold is proud to offer live real time bidding for the Atlasta & Seriously Black Sales. Real time, live video and audio available at anyone's finger tips.

All you need to do is **pre register** prior to sale day, log in and bid away.



To **register** visit our web site **www.vjvauction.com** and click the "Purebred Sales" tab on the VJV Ponoka page.

For any questions concerning online bidding

Call Craig Jacklin
(403) 783-1453

BID



Also
iPhone
compatible



DjH

Welcome to the 9th Annual Atlasta Bull Sale & Seriously Black Select Female Sale

It is such a great pleasure working with a breeder as enthusiastic as Brian Sutter. Brian's straightforward approach and strong work ethic are a real inspiration.

Brian's ability to breed high quality Angus seed stock is most impressive. The three important characteristics; growth, efficiency and reproductiveness are all important in the Atlasta Angus herd.

Brian will winter the yearling bulls until February 15, 2015, 50% payable sale day and 50% February 15, 2015. The two-year-old bulls are to be picked up after the sale along with the females and need to be paid for sale day.

This may well be the best set of bulls ever offered at Atlasta and the females are selected from the very top of the herd.

Come early, look over the bulls and females Friday afternoon, enjoy the great hospitality Friday evening and take in the sale Saturday. Enjoy Judy's famous pre Christmas smoked turkey and enjoy the Atlasta hospitality.

If Brian, Judy, the Seriously Black Consignors, Jack and Barb Hart and Brian and Annette Latimer, any of the sale staff or Linda and myself can be of assistance in anyway please give us a call.

Hope to see you at this excellent and fun filled Angus event.

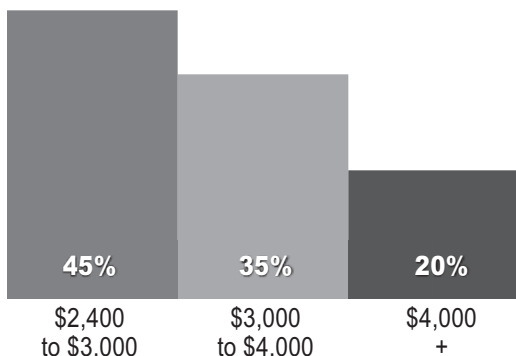
Doug Henderson

Douglas J. Henderson & Associates Ltd.

P.O. Box 5900, Lacombe, Alberta T4L 1X4 Doug & Linda Henderson
Phone: (403) 782-3888 Fax: (403) 782-3849 Cell: (403) 350-8541

Please bring this catalog with you to the sale

How the bulls sold last year



2014 has the best cattle prices in our life time and the most demand for your product ever. Large meat stores are sometimes out of product from Sunday to Wednesday because of high weekend demand and product supply shortages. We are having special runs at the plants, 2-3 days per week, just for China. We thought the consumer would not pay these record high prices for food, but they are. These issues are not going away for a few years either . . . so ride the wave.

Enjoy this time. Buy the cattle that will work for you today. There's no end in sight.

Fred W. Taylor, Taylor Made Research



Lot 1

ATLASTA UPWARD 75B



1

ATLASTA UPWARD 75B

MALE JBS 75B 1819879 JANUARY 16 2014

CONNEALY ONWARD DMF AMF CAF NHF DDF
SITZ UPWARD 307R DMF AMF CAF NHF DDF 1385926
SITZ HENRIETTA PRIDE 81M

CONNEALY LEAD ON DMF AMF CAF NHF DDF
ALTUNE OF CONANGA 6104
SITZ VALUE 7097 AMF CAF NHF DDF
SITZ HENRIETTA PRIDE 1370

SITZ ALLIANCE 6595 DMF AMF CAF NHF DDF
BB ANNIE 19P 1240737
J L S ANNIE 893

SITZ TRAVELER 8180 AMF CAF NHF DDF
SITZ BARBARAMERE JET 2698
Q A S TRAVELER 23-4 AMF CAF NHF DDF
J L S ANNIE 1301

ACTUAL	OCT.	ADJ.	EPDS			
			BW	WW	YW	MILK
88	865	703	+3.4 P+	+56 P+	+103 P+	+32 P



Lot 2 - Atlasta
Upward 77B



BB Annie 19P
Dam of Lot 1



Atlasta BB
Blackcap 012T
Dam of Lot 2

2

ATLASTA UPWARD 77B

MALE JBS 77B 1821192 JANUARY 16 2014

CONNEALY ONWARD DMF AMF CAF NHF DDF
SITZ UPWARD 307R DMF AMF CAF NHF DDF 1385926
SITZ HENRIETTA PRIDE 81M

CONNEALY LEAD ON DMF AMF CAF NHF DDF
ALTUNE OF CONANGA 6104
SITZ VALUE 7097 AMF CAF NHF DDF
SITZ HENRIETTA PRIDE 1370

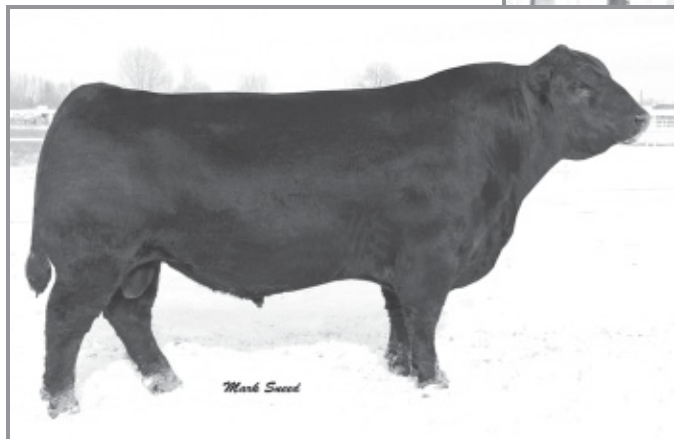
BON VIEW NEW DESIGN 878 AMF CAF NHF DDF
ATLASTA BB BLACKCAP 012T 1411485
BB BLACKCAP 15P

B/R NEW DESIGN 036 AMF CAF NHF DDF
BON VIEW GAMMER 85 CAC
SITZ TRADITION RLS 8702
SITZ BLACKCAP 2233

ACTUAL	OCT.	ADJ.	EPDS			
			BW	WW	YW	MILK
87	910	738	+2.5 P+	+61 P+	+110 P+	+33 P



Lot 3 - Atlasta Upward 88B



Sitz Upward 307R

EPDs: BW: +2.5 WW: +71 YW: +132 Milk: +40 TM: +76 CE: +6.0 MCE: +9.0 SC: +1.65

*Bid on bulls online!
Details on page 3*

3

ATLASTA UPWARD 88B

MALE JBS 88B 1821195 JANUARY 18 2014

CONNEALY ONWARD DMF AMF CAF NHF DDF
SITZ UPWARD 307R DMF AMF CAF NHF DDF 1385926
SITZ HENRIETTA PRIDE 81M

CONNEALY LEAD ON DMF AMF CAF NHF DDF
ALTUNE OF CONANGA 6104
SITZ VALUE 7097 AMF CAF NHF DDF
SITZ HENRIETTA PRIDE 1370

HF COMMANDER 60P
ATLASTA NF ERICA 83T 1405453
ATLASTA ERICA 8P

TC FREEDOM 104 AMF CAF NHF DDF
DURALTA 14C ECHO 32E
B/R NEW FRONTIER 095 AMF CAF NHF DDF
ATLASTA ERICA 57H

ACTUAL BW	OCT. 2/14	ADJ. 205D	EPDS			
			BW	WW	YW	MILK
82	910	742	+2.7 P+	+52 P+	+97 P+	+29 P

4

ATLASTA UPWARD 25B

MALE JBS 25B 1819884 JANUARY 07 2014

CONNEALY ONWARD DMF AMF CAF NHF DDF
SITZ UPWARD 307R DMF AMF CAF NHF DDF 1385926
SITZ HENRIETTA PRIDE 81M

CONNEALY LEAD ON DMF AMF CAF NHF DDF
ALTUNE OF CONANGA 6104
SITZ VALUE 7097 AMF CAF NHF DDF
SITZ HENRIETTA PRIDE 1370

MINBURN TRAVELER 74L
BARNETT ERICA 876P 1265464
SASKALTA ERICA 876H

GDAR SVF TRAVELER 228D
DWW MINBURN BLACKBIRD 44W
JOHNSTON 2100 TRADITION 485Y
ERICA OLE SASKALTA 7Y

ACTUAL BW	OCT. 2/14	ADJ. 205D	EPDS			
			BW	WW	YW	MILK
92	790	626	+4.1 P+	+47 P+	+82 P+	+26 P



Lot 4 - Atlasta Upward 25B



Barnett Erica 876P
Dam of Lot 4

Lot 5

**ATLATA
UPSHOT 81B**



5

ATLATA UPSHOT 81B

MALE JBS 81B 1821193 JANUARY 17 2014

SITZ UPWARD 307R DMF AMF CAF NHF DDF
EXAR UPSHOT 0562B AMF CAF NHF DDF 1695033
EXAR BARBARA T020 DDF

CONNELY ONWARD DMF AMF CAF NHF DDF
SITZ HENRIETTA PRIDE 81M
ISU IMAGING Q 9111 AMF CAF NHF DDF
LCC MC HENRY BARBAR MG382

CONNELY TIMELINE CAF DDF
ATLATA BB BARB JET 050T 1411491
BB BARBARAMERE JET 20P

CONNELY DATELINE DDF
ENCHANTS FORTUNE CONANGA 6127
SITZ ALLIANCE 7002
SITZ BARBARAMERE JET 3053



Atlata BB Barb Jet 050T
Dam of Lot 5

ACTUAL	OCT.	ADJ.	EPDS			
			BW	WW	YW	MILK
BW	2/14	205D	BW	WW	YW	MILK
84	885	720	+2.2 P+	+58 P+	+104 P+	+23 P



In Judy's garden



EXAR Upshot 0562B

EPDs: BW: +2.8 WW: +61 YW: +117 Milk: +31 TM: +62 CE: +9.0 MCE: +9.0 SC: +1.11



Atlata 1D Wendy 122X
Dam of Lot 6



Connealy Consensus 7229

EPDs: BW: +2.2 WW: +64 YW: +104 Milk: +35 TM: +67 CE: +4.0 MCE: +6.0 SC: +0.96

6

ATLATA CONSENSUS 76B

MALE JBS 76B 1821191 JANUARY 16 2014

CONNEALY CONSENSUS DDF
CONNEALY CONSENSUS 7229 AMF CAF NHF DDF 1593730
BLUE LILLY OF CONANGA 16 CAF

KMK ALLIANCE 6595 187 AMF CAF NHF DDF
BLINDA OF CONANGA 004
WOODHILL ADMIRAL 77K AMF CAF NHF DDF
BLUE CASH OF CONANGA 6020 CAF

ATLATA BB TRAVELER 6807 047T
ATLATA 1D WENDY 122X 1579652
ATLATA WENDY 72U

D H D TRAVELER 6807 AMF NHF
LEACHMAN WENDY 9031
S A V NET WORTH 4200 AMF CAF NHF DDF
ATLATA WW 32K

ACTUAL BW	OCT. 2/14	ADJ. 205D	EPDS			
			BW	WW	YW	MILK
92	990	819	+5.5 P+	+66 P+	+105 P+	+27 P

*Our
favourite
is #11*





Lot 7 - *Atlasta Consensus 115B*



Byman's Miss Goldette 3T
Dam of Lot 7

7

ATLASTA CONSENSUS 115B

MALE JBS 115B 1819906 JANUARY 23 2014

CONNEALY CONSENSUS DDF
CONNEALY CONSENSUS 7229 AMF CAF NHF DDF 1593730
BLUE LILLY OF CONANGA 16 CAF

KMK ALLIANCE 6595 187 AMF CAF NHF DDF
BLINDA OF CONANGA 004
WOODHILL ADMIRAL 77K AMF CAF NHF DDF
BLUE CASH OF CONANGA 6020 CAF

S A V NET WORTH 4200 AMF CAF NHF DDF
BYMAN'S MISS GOLDETTE 3T 1415199
BYMAN'S MISS FULLBACK 3P

S A V 8180 TRAVELER 004 DMF DWF AMF CAF NHF OSF DDF
S A V MAY 2410
RITO 9FB3 OF 5H11 FULLBACK AMF CAF NHF DDF
TOMBET MISS VONDA LORI 3L

ACTUAL BW	OCT. 2/14	ADJ. 205D	EPDS			
			BW	WW	YW	MILK
90	895	745	+4.8 P+	+61 P+	+102 P+	+27 P

8

ATLASTA CONSENSUS 63B

MALE JBS 63B 1819873 JANUARY 15 2014

CONNEALY CONSENSUS DDF
CONNEALY CONSENSUS 7229 AMF CAF NHF DDF 1593730
BLUE LILLY OF CONANGA 16 CAF

KMK ALLIANCE 6595 187 AMF CAF NHF DDF
BLINDA OF CONANGA 004
WOODHILL ADMIRAL 77K AMF CAF NHF DDF
BLUE CASH OF CONANGA 6020 CAF

SITZ PCAR EMULATION EXT 8668
BB EMMA E 14P 1240727
SITZ EMMA E 2873

N BAR EMULATION EXT AMF CAF NHF DDF
SITZ ELSLOW 546
LEACHMAN TWOPLY 0506
SITZ EMMA E 4508

ACTUAL BW	OCT. 2/14	ADJ. 205D	EPDS			
			BW	WW	YW	MILK
92	810	658	+4.8 P+	+53 P+	+86 P+	+23 P



Lot 8 - *Atlasta Consensus 63B*

9

ATLASTA CONSENSUS 103B

MALE JBS 103B 1819899 JANUARY 21 2014

CONNEALY CONSENSUS DDF
CONNEALY CONSENSUS 7229 AMF CAF NHF DDF 1593730
BLUE LILLY OF CONANGA 16 CAF

KMK ALLIANCE 6595 187 AMF CAF NHF DDF
BLINDA OF CONANGA 004
WOODHILL ADMIRAL 77K AMF CAF NHF DDF
BLUE CASH OF CONANGA 6020 CAF

SVF SIEBRINGS FOREVER RUSS AMF CAF NHF DDF
ATLASTA ERICA JANE 34S 1341977
MLA ERICA JANE 52'97

GDAR SVF RUSS 184B
GDAR SVF FOREVER LADY 214D
MLA KOCHIESE 55E
MLA ERICA 32'89

ACTUAL BW	OCT. 2/14	ADJ. 205D	EPDS			
			BW	WW	YW	MILK
92	780	647	+4.1 P+	+47 P+	+80 P+	+29 P



WAF Zorzal 321U

EPDs: BW:+3.4 WW:+32 YW:+43 Milk:-4 TM:+12 CE:+5.0 MCE:+5.0 SC:-0.08



Lot 10 - Atlasta Network 82B



SCA Lady Ann 34R
Dam of Lot 10

10

ATLASTA NETWORK 82B

MALE JBS 82B 1819890 JANUARY 17 2014

S A V 8180 TRAVELER 004 DMF DMF AMF CAF NHF OSF DDF
S A V NET WORTH 4200 AMF CAF NHF DDF 1309743
S A V MAY 2410

SITZ TRAVELER 8180 AMF CAF NHF DDF
BOYD FOREVER LADY 8003
S A F 598 BANDO 5175 AMF CAC DDF
S A V MAY 6269

SCA 3299 OF IDEAL 1418
SCA LADY ANN 34R 1292505
SCA LADY ANN 56G

IDEAL 1418 OF 8103 4286 AMF CAF NHF DDF
SCA 16E OF IDEAL 033 7258
LEACHMAN RIGHT TIME DMF AMF
SCA LADY ANN 12X

ACTUAL BW	OCT. 2/14	ADJ. 205D	EPDS			
			BW	WW	YW	MILK
86	840	685	+3.4 P+	+51 P+	+90 P+	+27 P



S A V Net Worth 4200

EPDs: BW: +4.7 WW: +58 YW: +107 Milk: +29 TM: +58 CE: +3.0 MCE: +9.0 SC: +0.97

*Please join us for lunch before
the sale & refreshments after*

11

ATLASTA ZORZAL 125B

MALE JBS 125B 1821198 JANUARY 26 2014

TRES MARIAS 6301 ZORZAL
WAF ZORZAL 321U AMF CAF NHF OSF 1485949
TRES MARIAS 6582 CUMELLEN 5632

TRES MARIAS 5887 HORNERO
TRES MARIAS 4850 WIND EXT
TRES MARIAS 5837 CUMELLEN
TRES MARIAS 5632 CHAPAR 5026

PINE DRIVE BIG SKY AMF CAF NHF DDF
BARNETT MISS WISEGUY 9P 1282416
MYALTA MISS WISEGUY 9C

LE MAR EILEENMERE LAD 549
BENLOCK BLACKCAP 108K
WILLABAR WISEGUY 22Y
FAQ MISS BRIAR 13T 4A

ACTUAL BW	OCT. 2/14	ADJ. 205D	ESTIMATED EPDS			
			BW	WW	YW	MILK
96	875	737	+5.1	+32	+44	+7



Lot 11 - Atlasta Zorzal 125B



Lot 12 - Atlasta Rito 128B



Atlasta Evergreen 109U
Dam of Lot 12

12

ATLASTA RITO 128B

MALE JBS 128B 1821211 JANUARY 27 2014

RITO 707 OF IDEAL 3407 7075
S A V 707 RITO 9969 DMF AMF CAF NHF DDF 1644747
BR POLLY 8077-472

R R RITO 707 AMF CAF NHF DDF
IDEAL 3407 OF 1418 076
PAPA EQUATOR 2928 AMF NHF
VDAR POLLY 8077

REMITALL MOONSHINE 113M
ATLASTA EVERGREEN 109U 1473782
BB EISA EVERGREEN 18P

VERMILION DATELINE 7078 AMF CAF NHF DDF
LLB COUNTESS 635H
SITZ PCAR EMULATION EXT 8668
SITZ EISA EVERGREEN 2313

ACTUAL BW	OCT. 2/14	ADJ. 205D	EPDS			
			BW	WW	YW	MILK
95	860	727	+6.1 P+	+54 P+	+96 P+	+25 P

13

ATLASTA RITO 91B

MALE JBS 91B 1821196 JANUARY 19 2014

RITO 707 OF IDEAL 3407 7075
S A V 707 RITO 9969 DMF AMF CAF NHF DDF 1644747
BR POLLY 8077-472

R R RITO 707 AMF CAF NHF DDF
IDEAL 3407 OF 1418 076
PAPA EQUATOR 2928 AMF NHF
VDAR POLLY 8077

SVF SIEBRINGS FOREVER RUSS AMF CAF NHF DDF
ATLASTA BARBARA R 55T 1405340
ATLASTA BARBARA 33H

GDAR SVF RUSS 184B
GDAR SVF FOREVER LADY 214D
MACC INDIAN NATION 66F
MLA BARBARA 4'95

ACTUAL BW	OCT. 2/14	ADJ. 205D	EPDS			
			BW	WW	YW	MILK
92	815	671	+5.7 P+	+45 P+	+87 P+	+29 P



Lot 13 - Atlasta Rito 91B



Atlasta Barbara 55T
Dam of Lot 13



S A V 707 Rito 9969

EPDs: BW: +6.6 WW: +67 YW: +127 Milk: +27 TM: +61 CE: -13.0 MCE: -4.0 SC: +1.52



Ranch tour

14

ATLASTA FINAL ANSWER 54B

MALE JBS 54B 1819897 JANUARY 14 2014

SITZ TRAVELER 8180 AMF CAF NHF DDF
S A V FINAL ANSWER 0035 AMF CAF NHF DDF **1061938**
 S A V EMULOUS 8145 CAF

G D A R TRAVELER 71 AMF CAF NHF DDF
 SITZ EVERELDA ENTENSE 1137
 BON VIEW BANDO 598 AMF CAC DDF
 S A V SKY EMULOUS 2124

BON VIEW NEW DESIGN 878 AMF CAF NHF DDF
BB BARBARAMERE NELL 24S 1362988
 SITZ BARBARAMERE NELL 3093

B/R NEW DESIGN 036 AMF CAF NHF DDF
 BON VIEW GAMMER 85 CAC
 LEACHMAN TWOPLY 0506
 SITZ BARBARAMERE NELL 2088



S A V Final Answer 0035

EPDs: BW: -0.9 WW: +61 YW: +103 Milk: +25 TM: +56 CE: +12.0 MCE: +14.0 SC: +1.43



Lot 14 - Atlasta Final Answer 54B



BB Barbaramere Nell 24S
 Dam of Lot 14



Lot 15 - Atlasta Basin Max 108B



Lady of Peak Dot 713L
Dam of Lot 15

15

ATLASTA BASIN MAX 108B

MALE JBS 108B 1821197 JANUARY 22 2014

G T MAXIMUM AMF CAF NHF DDF
BASIN MAX 602C AMF CAF NHF DDF 942987
BASIN ELINE ERICA 315U

SCOTCH CAP AMF CAF NHF DDF
GT MISS TRAVELER 58
G D A R RAINMAKER 340
BASIN ELINE ERICA 1313

HF MOST WANTED 46H
LADY OF PEAK DOT 713L 1048496
LADY OF PEAK DOT 315J

HF WALKER 107E
HFRF ROSEBUD 72F
PEAK DOT GENERAL STONE 25G
LADY OF PEAK DOT 417D

ACTUAL BW	OCT. 2/14	ADJ. 205D	EPDS			
			BW	WW	YW	MILK
85	785	679	+3.3 P+	+35 P+	+70 P+	+16 P

16

ATLASTA BASIN MAX 83B

MALE JBS 83B 1821194 JANUARY 11 2014

G T MAXIMUM AMF CAF NHF DDF
BASIN MAX 602C AMF CAF NHF DDF 942987
BASIN ELINE ERICA 315U

SCOTCH CAP AMF CAF NHF DDF
GT MISS TRAVELER 58
G D A R RAINMAKER 340
BASIN ELINE ERICA 1313

SITZ PCAR EMULATION EXT 8668
BB BLACKCAP 9P 1240715
SITZ BLACKCAP 232

N BAR EMULATION EXT AMF CAF NHF DDF
SITZ ELSLOW 546
K M A HIGHROLLER 5025
SITZ BLACKCAP 2738

ACTUAL BW	OCT. 2/14	ADJ. 205D	EPDS			
			BW	WW	YW	MILK
86	700	563	+2.4 P+	+32 P+	+64 P+	+11 P



Lot 16 - Atlasta Basin Max 83B



BB Blackcap 9P
Dam of Lot 16



Lot 17 - Atlasta RRT 152B



Chico Beauty Lass 405
Dam of Lot 17

17

ATLASTA RRT 152B

MALE JBS 152B 1819902 FEBRUARY 04 2014

LEACHMAN RIGHT TIME DMF AMF
REMINGTON RIGHT TIME 124R 1291957
 CRESCENT CREEK BLACKCAP 84E

N BAR EMULATION EXT AMF CAF NHF DDF
 LEACHMAN ERICA 0025
 RITO 8094 PRAIRIELANE 2060 AMF
 CRESCENT CREEK BLACKCAP 112A

BON VIEW NEW DESIGN 1407 AMF CAF NHF DDC
CHICO BEAUTY LASS 40S 1324039
 CHICO BEAUTY LASS 46F

B/R NEW DESIGN 036 AMF CAF NHF DDC
 BON VIEW PRIDE 664
 V D A R NEW TREND 315 AMF CAF NHF DDF
 LLB BEAUTY LASS 67B

ACTUAL BW	OCT. 2/14	ADJ. 205D	EPDS			
			BW	WW	YW	MILK
86	900	781	+2.9 P+	+33 P+	+67 P+	+25 P

18

ATLASTA RRT 137B

MALE JBS 137B 1819895 JANUARY 31 2014

LEACHMAN RIGHT TIME DMF AMF
REMINGTON RIGHT TIME 124R 1291957
 CRESCENT CREEK BLACKCAP 84E

N BAR EMULATION EXT AMF CAF NHF DDF
 LEACHMAN ERICA 0025
 RITO 8094 PRAIRIELANE 2060 AMF
 CRESCENT CREEK BLACKCAP 112A

SITZ ALLIANCE 6595 DMF AMF CAF NHF DDF
BB BARDOLIA 16S 1362476
 BARDOLIA OF PEAK DOT 413N

SITZ TRAVELER 8180 AMF CAF NHF DDF
 SITZ BARBARAMERE JET 2698
 STEVENSON BRUNO 6371
 BARDOLIA OF PEAK DOT 627F

ACTUAL BW	OCT. 2/14	ADJ. 205D	EPDS			
			BW	WW	YW	MILK
82	890	761	+1.6 P+	+40 P+	+73 P+	+27 P



Remington Right Time 124R

EPDs: BW: +1.9 WW: +30 YW: +61 Milk: +24 TM: +39
 CE: -2.0 MCE: +3.0 SC: +0.52



Lot 18 - Atlasta RRT 137B



Lot 19 - Atlasta RRT 166B



Lot 20 - Atlasta RRT 176B



BB Eslow 7R
Dam of Lot 20

*Satisfaction Guaranteed
with our Sight Unseen
Purchase Plan
Call Brian or Doug for details*

19

ATLASTA RRT 166B

MALE JBS 166B 1819894 FEBRUARY 09 2014

LEACHMAN RIGHT TIME DMF AMF
REMINGTON RIGHT TIME 124R 1291957
CRESCENT CREEK BLACKCAP 84E

N BAR EMULATION EXT AMF CAF NHF DDF
LEACHMAN ERICA 0025
RITO 8094 PRAIRIELANE 2060 AMF
CRESCENT CREEK BLACKCAP 112A

CONNEALY TIMELINE CAF DDF
BB PRIDE 15S 1362491
BB PRIDE 2P

CONNEALY DATELINE DDF
ENCHANTS FORTUNE CONANGA 6127
SITZ TRADITION RLS 8702
SITZ PRIDE 3113

ACTUAL BW	OCT. 2/14	ADJ. 205D	EPDS			
			BW	WW	YW	MILK
88	870	770	+3.7 P+	+46 P+	+79 P+	+21 P

20

ATLASTA RRT 176B

MALE JBS 176B 1819886 JANUARY 16 2014

LEACHMAN RIGHT TIME DMF AMF
REMINGTON RIGHT TIME 124R 1291957
CRESCENT CREEK BLACKCAP 84E

N BAR EMULATION EXT AMF CAF NHF DDF
LEACHMAN ERICA 0025
RITO 8094 PRAIRIELANE 2060 AMF
CRESCENT CREEK BLACKCAP 112A

PEAK DOT FAME 414M
BB ELSLOW 7R 1297916
SITZ ELSLOW 203

S A R FAME 2089
DUCHESS OF PEAK DOT 642K
SITZ RITO 8980
SITZ ELSLOW 1571

ACTUAL BW	OCT. 2/14	ADJ. 205D	EPDS			
			BW	WW	YW	MILK
84	855	694	+2.9 P+	+34 P+	+65 P+	+25 P

21

ATLASTA RRT 139B

MALE JBS 139B 1819900 JANUARY 31 2014

LEACHMAN RIGHT TIME DMF AMF
REMINGTON RIGHT TIME 124R 1291957
CRESCENT CREEK BLACKCAP 84E

N BAR EMULATION EXT AMF CAF NHF DDF
LEACHMAN ERICA 0025
RITO 8094 PRAIRIELANE 2060 AMF
CRESCENT CREEK BLACKCAP 112A

BASIN MAX 602C AMF CAF NHF DDF
BB LADY 35S 1418176
LADY OF PEAK DOT 713L

G T MAXIMUM AMF CAF NHF DDF
BASIN ELINE ERICA 315U
HF MOST WANTED 46H
LADY OF PEAK DOT 315J

ACTUAL BW	OCT. 2/14	ADJ. 205D	EPDS			
			BW	WW	YW	MILK
84	750	644	+2.3 P+	+29 P+	+61 P+	+20 P



Lot 22 - Atlasta CJ 18B

Geis Missie 29'07
Dam of Lot 22



22

ATLASTA CJ 18B

MALE JBS 18B 1819917 JANUARY 05 2014

JUSTAMERE 1118 CASH 665P
REMITALL SUPEREVENT 532S 1338191
KBJ ANNIE 829N

EXAR BIG TIMBER 1118
REMITALL KEEPSAKE 143L
LLB TRAVELER 297K
KBJ ANNIE 438L

HF KODIAK 5R AMF CAF NHF MAF DDF
GEIS MISSIE 29'07 1393213
GEIS MISSIE 85'00

SANDY BAR ADVANTAGE 43M DDF
WILBAR RUBY 955N
TERRLENE PRIDE ACHIEVER 10B
GEIS MISSIE 25'91

ACTUAL BW	OCT. 2/14	ADJ. 205D	EPDS			
			BW	WW	YW	MILK
90	880	690	+4.8 P+	+53 P+	+87 P+	+17 P



Lot 23 - Atlasta Russ 3B

23

ATLASTA RUSS 3B

MALE JBS 3B 1819868 JANUARY 01 2014

SVF SIEBRINGS FOREVER RUSS AMF CAF NHF DDF
ATLASTA FOREVER RUSS 37S 1341988
ATLASTA ERICA 34H

GDAR SVF RUSS 184B
GDAR SVF FOREVER LADY 214D
MACC INDIAN NATION 66F
MLA ELLEN ERICA 34'95

SITZ TRAVELER 8180 AMF CAF NHF DDF
BB BARBARA PERFECTION 1N 1251137
SITZ BARBARA PERFECTION 770

G D A R TRAVELER 71 AMF CAF NHF DDF
SITZ EVERELDA ENTENSE 1137
TRAVELER 124 G D A R
SITZ BARBARA PERFECTION 1018

ACTUAL BW	OCT. 2/14	ADJ. 205D	EPDS			
			BW	WW	YW	MILK
76	780	603	+0.5 P+	+28 P+	+55 P+	+22 P



Lot 24 - Atlasta FR 40Y-9B

24

ATLASTA FR 40Y-9B

MALE JBS 9B 1819943 JANUARY 01 2014

SVF SIEBRINGS FOREVER RUSS AMF CAF NHF DDF
ATLASTA FOREVER RUSS 40Y 1644733
B.B.A.R. LADY MONOGRAM 167'96

GDAR SVF RUSS 184B
GDAR SVF FOREVER LADY 214D
LEACHMAN RIGHT TIME DMF AMF
LADY MONOGRAM 67'94

NOBLE ACRES ELMO 1R
ATLASTA DYNA LADY 15U 1473749
ATLASTA DYNA LADY 69N

NOBLE ACRES JUMP START 50N
NOBLE ACRES FLORA 1H
COLDSTREAM SKUKUM 52K
ATLASTA DYNA E 14H

ACTUAL BW	OCT. 2/14	ADJ. 205D	EPDS			
			BW	WW	YW	MILK
86	905	699	+4.1 P+	+46 P+	+77 P+	+22 P



Lot 25 - Atlasta Predominant 31W-12B



Atlasta Erica 11X
Dam of Lot 25



Atlasta Predominant 31W

EPDs: BW: +3.7 WW: +45 YW: +74 Milk: +24 TM: +47 CE: +5.0 MCE: +6.0
Co-owned with KBJ Round Farms & Dream Makers Angus

25 **ATLASTA PREDOMINANT 31W-12B**

MALE JBS 12B 1819984 JANUARY 02 2014

S A V 004 PREDOMINANT 4438 AMF CAF NHF DDF
ATLASTA PREDOMINANT 31W 1527926
ATLASTA WENDY 35K

S A V 8180 TRAVELER 004 DMF DMF AMF CAF NHF OSF DDF
S A V EMBLYNETTE 1182
ALBERDA TRAVELER 416 AMF CAF NHF DDF
ATLASTA WENDY 37H

HF KODIAK 57U
ATLASTA ERICA 11X 1574833
ATLASTA ERICA 125U

HF KODIAK 5R AMF CAF NHF MAF DDF
HF ROSEBUD 94P
B/R NEW FRONTIER 095 AMF CAF NHF DDF
ATLASTA NY ERICA 33P

ACTUAL BW	OCT. 2/14	ADJ. 205D	EPDS			
			BW	WW	YW	MILK
85	940	743	+3.9 P+	+51 P+	+85 P+	+23 P



Lot 26 - Atlasta Predominant 31W-51B

26 **ATLASTA PREDOMINANT 31W-51B**

MALE JBS 51B UNREGISTERED JANUARY 13 2014

ATLASTA PREDOMINANT 31W 1527926

S A V 004 PREDOMINANT 4438 AMF CAF NHF DDF
ATLASTA WENDY 35K

ATLASTA 365 187U

REMITALL SUPEREVENT 532S
ATLASTA ABBY 37R

ACTUAL BW	OCT. 2/14	
86	855	SELLING WITH NO PAPERS

27

ATLASTA UPWARD 64Z-24B

MALE JBS 24B 1819975 JANUARY 07 2014

SITZ UPWARD 307R DMF AMF CAF NHF DDF
REMITALL F UPTOWN 64Z 1670376
SHANDEEN BLACK ANGEL 133T

CONNELLY ONWARD DMF AMF CAF NHF DDF
SITZ HENRIETTA PRIDE 81M
HF LIBERATOR 29P
K.D.F BLACK ANGEL 36P

S A V 004 PREDOMINANT 4438 AMF CAF NHF DDF
ATLASTA LADY PREDOMINANT 80W 1528187
ATLASTA LADY 125R

S A V 8180 TRAVELER 004 DMF DMF AMF CAF NHF OSF DDF
S A V EMBLYNETTE 1182
A C REMINGTON
ATLASTA LADY 7G

ACTUAL BW	OCT. 2/14	ADJ. 205D	EPDS			
			BW	WW	YW	MILK
82	860	677	+2.9 P+	+56 P+	+96 P+	+25 P



Lot 27 - Atlasta Upward 64Z-24B

28

ATLASTA UPWARD 64Z-146B

MALE JBS 146B 1819976 FEBRUARY 02 2014

SITZ UPWARD 307R DMF AMF CAF NHF DDF
REMITALL F UPTOWN 64Z 1670376
SHANDEEN BLACK ANGEL 133T

CONNELLY ONWARD DMF AMF CAF NHF DDF
SITZ HENRIETTA PRIDE 81M
HF LIBERATOR 29P
K.D.F BLACK ANGEL 36P

BB ATLASTA FOCUS 46S
ATLASTA NF ERICA 131W 1531278
ATLASTA ERICA 38P

S A F FOCUS OF E R AMF CAF NHF DDF
LUKENS 6807 KEM 3956
B/R NEW FRONTIER 095 AMF CAF NHF DDF
MLA ERICA 31'95

ACTUAL BW	OCT. 2/14	ADJ. 205D	EPDS			
			BW	WW	YW	MILK
84	845	729	+3.1 P+	+53 P+	+93 P+	+26 P



Lot 28 - Atlasta Upward 64Z-146B

29

ATLASTA UPWARD 64Z-100B

MALE JBS 100B 1819977 JANUARY 20 2014

SITZ UPWARD 307R DMF AMF CAF NHF DDF
REMITALL F UPTOWN 64Z 1670376
SHANDEEN BLACK ANGEL 133T

CONNELLY ONWARD DMF AMF CAF NHF DDF
SITZ HENRIETTA PRIDE 81M
HF LIBERATOR 29P
K.D.F BLACK ANGEL 36P

REMITALL PILOT 103P
ATLASTA BARBARA 134W 1527914
ATLASTA BARBARA 33H

REMITALL MERCEDES 146M
HAPPYVALE NEONIA 27E
MACC INDIAN NATION 66F
MLA BARBARA 4'95

ACTUAL BW	OCT. 2/14	ADJ. 205D	EPDS			
			BW	WW	YW	MILK
88	840	693	+3.5 P+	+48 P+	+86 P+	+26 P



Remitall F Uptown 64Z

EPDs: BW: +3.1 WW: +62 YW: +113 Milk: +34 TM: +65 CE: +3.0 MCE: +8.0



Lot 29 - Atlasta Upward 64Z-100B



Lot 30 - Atlasta Upward 141B

30

ATLASTA UPWARD 64Z-141B

MALE JBS 141B 1819952 JANUARY 31 2014

SITZ UPWARD 307R DMF AMF CAF NHF DDF
 REMITALL F UPTOWN 64Z 1670376
 SHANDEEN BLACK ANGEL 133T

CONNELLY ONWARD DMF AMF CAF NHF DDF
 SITZ HENRIETTA PRIDE 81M
 HF LIBERATOR 29P
 K.D.F BLACK ANGEL 36P

BB ATLASTA FOCUS 46S
 ATLASTA ELLEN ERICA 22P 25W 1531258
 ATLASTA ELLEN ERICA 65P

S A F FOCUS OF E R AMF CAF NHF DDF
 LUKENS 6807 KEM 3956
 W V F HB ATLANTIC NATL MERIT
 MLA ELLEN ERICA 36'93

ACTUAL BW	OCT. 2/14	ADJ. 205D	EPDS			
			BW	WW	YW	MILK
70	860	734	+0.1 P+	+48 P+	+88 P+	+25 P



Lot 31 - Atlasta Upward 25B



Atlasta 49R Miss Right Time 143W
 Dam of Lot 31

31

ATLASTA UPWARD 64Z-53B

MALE JBS 53B 1819978 JANUARY 13 2014

SITZ UPWARD 307R DMF AMF CAF NHF DDF
 REMITALL F UPTOWN 64Z 1670376
 SHANDEEN BLACK ANGEL 133T

CONNELLY ONWARD DMF AMF CAF NHF DDF
 SITZ HENRIETTA PRIDE 81M
 HF LIBERATOR 29P
 K.D.F BLACK ANGEL 36P

REMINGTON RIGHT TIME 124R
 ATLASTA 49R MISS RIGHT TIME 14 1528055
 ATLASTA PATRICIA 49R

LEACHMAN RIGHT TIME DMF AMF
 CRESCENT CREEK BLACKCAP 84E
 HF FORMATION 13K
 ATLASTA PATRICIA 220M

ACTUAL BW	OCT. 2/14	ADJ. 205D	EPDS			
			BW	WW	YW	MILK
85	800	644	+2.3 P+	+44 P+	+81 P+	+28 P



Bucket bath!

32

ATLASTA UPWARD 64Z-114B

MALE JBS 114B 1819980 JANUARY 23 2014

SITZ UPWARD 307R DMF AMF CAF NHF DDF
 REMITALL F UPTOWN 64Z 1670376
 SHANDEEN BLACK ANGEL 133T

CONNELLY ONWARD DMF AMF CAF NHF DDF
 SITZ HENRIETTA PRIDE 81M
 HF LIBERATOR 29P
 K.D.F BLACK ANGEL 36P

REMITALL PILOT 103P
 ATLASTA BARBARA NELL 192W 1527907
 SITZ BARBARAMERE NELL 3093

REMITALL MERCEDES 146M
 HAPPYVALE NEONIA 27E
 LEACHMAN TWOPLY 0506
 SITZ BARBARAMERE NELL 2088

ACTUAL BW	OCT. 2/14	ADJ. 205D	EPDS			
			BW	WW	YW	MILK
94	745	624	+4.7 P+	+43 P+	+79 P+	+24 P

33

ATLASTA RFA 109B

MALE JBS 109B 1819864 JANUARY 22 2014

S A V FINAL ANSWER 0035 AMF CAF NHF DDF
REMINGTON FINAL ANSWER 209T 1419050
BOTANY ANGUS ELLEN 14G

SITZ TRAVELER 8180 AMF CAF NHF DDF
S A V EMULOUS 8145 CAF
N BAR EMULATION EXT AMF CAF NHF DDF
BOTANY ANGUS ELLEN 28B

DMM STOCKMAN 106J
ATLASTA ELLEN ERICA 62N 1165260
ATLASTA ELLEN 2H

TC STOCKMAN 365 DDF
DMM MISS ESSENCE 22B
ALSIKE ACRES EX NITRO BLAST 3F
ATLASTA REBA 6'96

ACTUAL BW	OCT. 2/14	ADJ. 205D	EPDS			
			BW	WW	YW	MILK
84	900	772	+4.7 P+	+51 P+	+85 P+	+16 P



Lot 33 - Atlasta RFA 109B

34

ATLASTA RFA 70B

MALE JBS 70B 1819867 JANUARY 15 2014

S A V FINAL ANSWER 0035 AMF CAF NHF DDF
REMINGTON FINAL ANSWER 209T 1419050
BOTANY ANGUS ELLEN 14G

SITZ TRAVELER 8180 AMF CAF NHF DDF
S A V EMULOUS 8145 CAF
N BAR EMULATION EXT AMF CAF NHF DDF
BOTANY ANGUS ELLEN 28B

DMM STOCKMAN 106J
ATLASTA BARBARA 84N 1153320
MLA BARBARA 14'93

TC STOCKMAN 365 DDF
DMM MISS ESSENCE 22B
GET-A-LONG ALAMO 132
MLA BARBARA 34'88

ACTUAL BW	OCT. 2/14	ADJ. 205D	EPDS			
			BW	WW	YW	MILK
84	790	668	+3.8 P+	+46 P+	+75 P+	+10 P



Lot 34 - Atlasta RFA 70B

35

ATLASTA RFA 104B

MALE JBS 104B 1819865 JANUARY 21 2014

S A V FINAL ANSWER 0035 AMF CAF NHF DDF
REMINGTON FINAL ANSWER 209T 1419050
BOTANY ANGUS ELLEN 14G

SITZ TRAVELER 8180 AMF CAF NHF DDF
S A V EMULOUS 8145 CAF
N BAR EMULATION EXT AMF CAF NHF DDF
BOTANY ANGUS ELLEN 28B

COLDSTREAM SKUKUM 52K
ATLASTA DYNA LADY 69N 1153347
ATLASTA DYNA E 14H

COLDSTREAM DOMINATOR 7G
COLDSTREAM LADY HEATHER 80E
HILL TOP DYNASTY 146F
MLA ELLEN ERICA 4'86

ACTUAL BW	OCT. 2/14	ADJ. 205D	EPDS			
			BW	WW	YW	MILK
84	805	693	+3.3 P+	+41 P+	+66 P+	+11 P



Remington Final Answer 209T

EPDs: BW: +3.2 WW: +57 YW: +89 Milk: +7 TM: +36 CE: +4.0 MCE: +8.0 SC: +0.61



Lot 35 - Atlasta RFA 104B



Lot 36 - Atlasta BH Winton 127B

36

ATLASTA BH WINTON 127B

MALE JBS 127B 1819950 JANUARY 27 2014

BRESEE ACRES WINNIES LAD 4
BAR HEART WINTON LAD 219Z 1662879
 LINWOOD ELBA 19S

BRESEE ACRES ROSES LAD
 WINNIE OF REO 10
 STEVENSON BRUNO 561G CAF NHF DDF
 LINWOOD ELBA 3M

DRYLAND ICEBERG 411 AMF
LLB KINCHTRY BEAUTY 765U 1455346
 LLB KINCHTRY BEAUTY 138R

CAR ICEBERG 056
 CRESCENT CREEK DUCHESS 88E
 HF CONTROLLER 35L
 LLB KINCHTRY BEAUTY 214H

ACTUAL BW	OCT. 2/14	ADJ. 205D	EPDS			
			BW	WW	YW	MILK
92	840	710	+5.8 P+	+42 P+	+75 P+	+3 P



Bar Heart Winton Lad 219Z

EPDs: BW: +3.9 WW: +29 YW: +52 Milk: +7 TM: +22 CE: -2.0 MCE: +0.0

37

ATLASTA BH WINTON 175B

MALE JBS 175B 1819882 FEBRUARY 15 2014

BRESEE ACRES WINNIES LAD 4
BAR HEART WINTON LAD 219Z 1662879
 LINWOOD ELBA 19S

BRESEE ACRES ROSES LAD
 WINNIE OF REO 10
 STEVENSON BRUNO 561G CAF NHF DDF
 LINWOOD ELBA 3M

W V F HB ATLANTIC NATL MERIT
ATLASTA ELLEN ERICA 65P 1236598
 MLA ELLEN ERICA 36'93

L F NEW TREND 4100 AMF CAF NHF DDF
 L L A GEORGINA 419
 MLA CRUSADER 2Z
 MLA ELLEN ERICA 8'80

ACTUAL BW	OCT. 2/14	ADJ. 205D	EPDS			
			BW	WW	YW	MILK
86	775	703	+3.5 P+	+34 P+	+56 P+	+11 P



Atlasta Ellen Erica 65P
 Dam of Lot 37



Lot 37 - Atlasta BH Winton 175B

38

ATLASTA BH WINTON 191B

MALE JBS 191B 1820008 FEBRUARY 25 2014

BRESEE ACRES WINNIES LAD 4
BAR HEART WINTON LAD 219Z 1662879
LINWOOD ELBA 19S

BRESEE ACRES ROSES LAD
WINNIE OF REO 10
STEVENSUN BRUNO 561G CAF NHF DDF
LINWOOD ELBA 3M

REMITALL SUPEREVENT 532S
ATLASTA MISS BANDO 74X 1573524
ATLASTA BB BANDO 493 063T

JUSTAMERE 1118 CASH 665P
KBJ ANNIE 829N
N BAR EMULATION EXT AMF CAF NHF DDF
GAR BANDO 493

ACTUAL BW	OCT. 2/14	ADJ. 205D	EPDS			
			BW	WW	YW	MILK
86	700	677	+3.9 P+	+37 P+	+64 P+	+14 P



Lot 38 - Atlasta BH Winton 191B

39

ATLASTA BH WINTON 159B

MALE JBS 159B 1821200 FEBRUARY 06 2014

BRESEE ACRES WINNIES LAD 4
BAR HEART WINTON LAD 219Z 1662879
LINWOOD ELBA 19S

BRESEE ACRES ROSES LAD
WINNIE OF REO 10
STEVENSUN BRUNO 561G CAF NHF DDF
LINWOOD ELBA 3M

SVF SIEBRINGS FOREVER RUSS AMF CAF NHF DDF
ATLASTA MONOGRAM 167F-66Y 1821199
B.B.A.R. LADY MONOGRAM 167'96

GDAR SVF RUSS 184B
GDAR SVF FOREVER LADY 214D
LEACHMAN RIGHT TIME DMF AMF
LADY MONOGAM 67/94

ACTUAL BW	OCT. 2/14	ADJ. 205D	EPDS			
			BW	WW	YW	MILK
92	630	593	+4.7 P+	+16 P+	+27 P+	+4 P



Lot 39 - Atlasta BH Winton 159B



Definitely a treat

40

ATLASTA GRIDMAKER 199B

MALE JBS 199B 1819996 MARCH 01 2014

G A R GRID MAKER AMF CAF NHF DDF
LVA 17M ASCENT 4X 1543665
NOBLE ACRES KARAMA 17M

G D A R TRAVELER 044 AMF CAF NHF DDF
G A R PRECISION 2536 AMF NHF
NOBLE LINE RAIN BOY 1K
WAVY KARAMA 17K

CONNELLY DATELINE DDF
ATLASTA BLACKCAP LADY 51X 1573521
ATLASTA BLACK LADY 42L

D H D TRAVELER 6807 AMF NHF
EILA EILA OF CONANGA AMF DDF
TC STOCKMAN 365 DDF
MLA BLACKCAP 21'95

ACTUAL BW	OCT. 2/14	ADJ. 205D	EPDS			
			BW	WW	YW	MILK
85	805	788	+3.7 P+	+46 P+	+80 P+	+16 P



Lot 40 - Atlasta Gridmaker 199B



Lot 41 - Atlasta Gridmaker 181B



Atlasta 37H Wendy 69X
Dam of Lot 41

41

ATLASTA GRIDMAKER 181B

MALE JBS 181B 1820005 FEBRUARY 19 2014

G A R GRID MAKER AMF CAF NHF DDF
LVA 17M ASCENT 4X 1543665
NOBLE ACRES KARAMA 17M

G D A R TRAVELER 044 AMF CAF NHF DDF
G A R PRECISION 2536 AMC NHF
NOBLE LINE RAIN BOY 1K
WAVY KARAMA 17K

REMINGTON FINAL ANSWER 209T
ATLASTA 37H WENDY 69X 1574837
ATLASTA WENDY 27U

S A V FINAL ANSWER 0035 AMF CAF NHF DDF
BOTANY ANGUS ELLEN 14G
BASIN MAX 602C AMF CAF NHF DDF
ATLASTA WENDY 37H

ACTUAL BW	OCT. 2/14	ADJ. 205D	EPDS			
			BW	WW	YW	MILK
90	770	726	+5.2 P+	+48 P+	+83 P+	+13 P

*Pre-Sale Cattle Viewing
Friday afternoon December 12
Social evening to follow*



Royal Traveler DRCC 6068S

EPDs: BW: +1.4 WW: +44 YW: +76 Milk: +19 TM: +41 CE: +2.7 MCE: +5.9 SC: +0.70



Lot 42 - Atlasta AT 170B

42

ATLASTA AT 170B

MALE JBS 170B 1819919 FEBRUARY 11 2014

ALBERDA TRAVELER 416 AMF CAF NHF DDF
ROYAL TRAVELER DRCC 6068S 1353251
RALLY KATINKA 229B

D H D TRAVELER 6807 AMF NHF
ALBERDA QUEEN KIMBERLY 222
N BAR EMULATION EXT AMF CAF NHF DDF
HARMONY HILL KATINKA 229

JDM KRUGERRAND 1'04
ATLASTA 24B MISS KRUGS 40T 1405481
ATLASTA ERICA 58R

F A R KRUGERRAND 410H AMF CAF NHF DDF
JDM BLOSSOM 9'98
A C REMINGTON
MLA ERICA 24'92

ACTUAL BW	OCT. 2/14	ADJ. 205D	EPDS			
			BW	WW	YW	MILK
86	785	701	+3.8 P+	+37 P+	+67 P+	+16 P



Lot 43 - Atlasta AT 153B



Atlasta Briar 45T
Dam of Lot 43

43

ATLASTA AT 153B

MALE JBS 153B 1819922 FEBRUARY 05 2014

ALBERDA TRAVELER 416 AMF CAF NHF DDF
ROYAL TRAVELER DRCC 6068S 1353251
RALLY KATINKA 229B

D H D TRAVELER 6807 AMF NHF
ALBERDA QUEEN KIMBERLY 222
N BAR EMULATION EXT AMF CAF NHF DDF
HARMONY HILL KATINKA 229

HF COMMANDER 60P
ATLASTA BRIAR 45T 1704826
BARNETT BRIAR 15P

TC FREEDOM 104 AMF CAF NHF DDF
DURALTA 14C ECHO 32E
TC ADVANTAGE AMF CAF NHF DDC
BARNETT BRIAR 15M

ACTUAL BW	OCT. 2/14	ADJ. 205D	EPDS			
			BW	WW	YW	MILK
68	760	662	-1.1 P+	+26 P+	+53 P+	+18 P



Coach
Grandpa

EPD Definitions:

BW: Birth Weight - expressed in pounds, is a predictor of a sire's ability to transmit birth weight to his progeny compared to that of other sires.

WW: Weaning Weight - expressed in pounds, is a predictor of a sire's ability to transmit weaning growth to his progeny compared to that of other sires. WW is an indicator of growth from birth to weaning (205 days). The calf's growth during this period is influenced by its own ability to grow plus its mother's maternal abilities.

YW: Yearling Weight - expressed in pounds, is a predictor of a sire's ability to transmit yearling growth to his progeny compared to that of other sires.

MILK: Milk - is an indicator of milking ability in daughters. It represents the differences in weaning weight of calves due to the amount of milk produced by their mothers. It is expressed in pounds of calf weaned.

TM: Total Maternal - is a combination of the weaning weight and milk EPDs. It is calculated as: 1/2 WW EPD + Milk EPD = TM. This EPD represents the differences in weaning weights between calves due to mothering and milking ability of their dams.

CE: Calving Ease Direct - the average difference in ease with which a sire's calves will be born when he is bred to first calf heifers. The higher the number the more probability that his calves will be born unassisted.

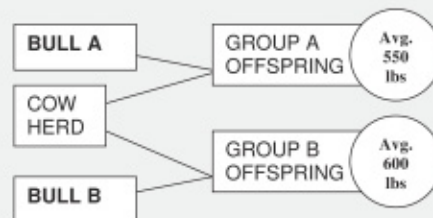
MCE: Maternal Calving Ease - is expressed as a difference in percentage of unassisted births with a higher value indicating greater probability of unassisted births in first-calf daughters. It predicts the average ease with which a sire's daughters will calve as first-calf heifers when compared to daughters of other sires.

EPDs are an indication of how an animal's calves will perform on average compared to another animal's calves.

For example, if Bull A (weaning weight EPD of +10) and Bull B (WW of +60) were randomly mated with ten similar cows, we would expect the group average weaning weight of Bull A's offspring to be 50 lbs lighter than that of Bull B's (60-10=50).

Calf	A	B
1	500	400
2	510	450
3	520	500
4	530	550
5	540	600
6	560	600
7	570	650
8	580	700
9	590	750
10	600	800
Avg.	550	600

Note that not all calves from Bull B have a higher weaning weight, but the average is 50 lbs higher.



AVERAGE EPDS			
BW	WW	YW	MILK
+2.8	+44	+76	+19



Lot 44 - Atlasta BA 809U-121B

44

ATLASTA BA 809U-121B

MALE JBS 121B 1819985 JANUARY 24 2014

S A V FINAL ANSWER 0035 AMF CAF NHF DDF
 LFE BA LEWIS 809U 1496729
 SOUTHERN OX ERICA 51T

SITZ TRAVELER 8180 AMF CAF NHF DDF
 S A V EMULOUS 8145 CAF
 SPRUCE VIEW EILEENMERE 74N
 SOUTHERN OX ERICA 66J

GGRR TRAFALGAR 19S
 ATLASTA GT MAXINE 14X 1573507
 BARNETT MAXINE 112P

SCA 03H OF IDEAL 1418
 SCA LADY ANN 03K
 PINE DRIVE BIG SKY AMF CAF NHF DDF
 F V MAXINE 112C

ACTUAL BW	OCT. 2/14	ADJ. 205D	EPDS			
			BW	WW	YW	MILK
84	910	775	+3.7 P+	+55 P+	+91 P+	+21 P



LFE BA Lewis 809U

EPDs: BW: +2.7 WW: +55 YW: +90 Milk: +24 TM: +52 CE: +3.0 MCE: +7.0

45

ATLASTA FA 809U-111B

MALE JBS 111B 1819999 JANUARY 22 2014

S A V FINAL ANSWER 0035 AMF CAF NHF DDF
 LFE BA LEWIS 809U 1496729
 SOUTHERN OX ERICA 51T

SITZ TRAVELER 8180 AMF CAF NHF DDF
 S A V EMULOUS 8145 CAF
 SPRUCE VIEW EILEENMERE 74N
 SOUTHERN OX ERICA 66J

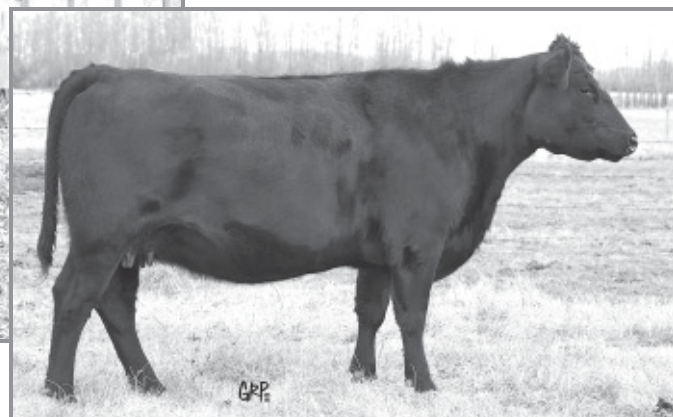
ATLASTA FOREVER RUSS 37S
 ATLASTA LADY AT P.D. 55X 1582935
 LADY OF PEAK DOT 713L

SVF SIEBRINGS FOREVER RUSS AMF CAF NHF DDF
 ATLASTA ERICA 34H
 HF MOST WANTED 46H
 LADY OF PEAK DOT 315J

ACTUAL BW	OCT. 2/14	ADJ. 205D	EPDS			
			BW	WW	YW	MILK
82	900	761	+3.1 P+	+52 P+	+88 P+	+20 P



Lot 41 - Atlasta FA 809U-111B



Atlasta Lady At P.D. 55X
 Dam of Lot 45

46

ATLASTA FA 809U-72B

MALE JBS 72B 1819988 JANUARY 15 2014

S A V FINAL ANSWER 0035 AMF CAF NHF DDF
LFE BA LEWIS 809U 1496729
SOUTHERN OX ERICA 51T

SITZ TRAVELER 8180 AMF CAF NHF DDF
S A V EMULOUS 8145 CAF
SPRUCE VIEW EILEENMERE 74N
SOUTHERN OX ERICA 66J

ATLASTA FOREVER RUSS 37S
ATLASTA 33H BARBARA 26X 1573511
ATLASTA BARBARA 77P

SVF SIEBRINGS FOREVER RUSS AMF CAF NHF DDF
ATLASTA ERICA 34H
ATLASTA BOMBER 96M
ATLASTA BARBARA 133M

ACTUAL BW	OCT. 2/14	ADJ. 205D	EPDS			
			BW	WW	YW	MILK
78	810	671	+1.2 P+	+43 P+	+72 P+	+21 P



Lot 48 - Atlasta FA 809U-149B



Lot 46 - ATLASTA FA 809U-72B



Lot 47 - Atlasta FA 809U-29B

47

ATLASTA FA 809U-29B

MALE JBS 29B 1820209 JANUARY 08 2014

S A V FINAL ANSWER 0035 AMF CAF NHF DDF
LFE BA LEWIS 809U 1496729
SOUTHERN OX ERICA 51T

SITZ TRAVELER 8180 AMF CAF NHF DDF
S A V EMULOUS 8145 CAF
SPRUCE VIEW EILEENMERE 74N
SOUTHERN OX ERICA 66J

S A V HEAVY HITTER 6347 AMF CAF NHF
ATLASTA BARBARA PERFECTION 20Y 1620344
BB BARBARA PERFECTION 1N

S A V 8180 TRAVELER 004 DMF DMF AMF CAF NHF OSF DDF
S A V BESSIE HEIRESS 1184 CAC
SITZ TRAVELER 8180 AMF CAF NHF DDF
SITZ BARBARA PERFECTION 770

ACTUAL BW	OCT. 2/14	ADJ. 205D	EPDS			
			BW	WW	YW	MILK
84	825	691	+3.0 P+	+50 P+	+83 P+	+23 P



Lot 49 - Atlasta FA 809U-31B

48

ATLASTA FA 809U-149B

MALE JBS 149B 1820034 FEBRUARY 03 2014

S A V FINAL ANSWER 0035 AMF CAF NHF DDF
LFE BA LEWIS 809U 1496729
SOUTHERN OX ERICA 51T

SITZ TRAVELER 8180 AMF CAF NHF DDF
S A V EMULOUS 8145 CAF
SPRUCE VIEW EILEENMERE 74N
SOUTHERN OX ERICA 66J

REMITALL SUPEREVENT 532S
ATLASTA LADY 35S-24Y 1620358
BB LADY 35S

JUSTAMERE 1118 CASH 665P
KBJ ANNIE 829N
BASIN MAX 602C AMF CAF NHF DDF
LADY OF PEAK DOT 713L

ACTUAL BW	OCT. 2/14	ADJ. 205D	EPDS			
			BW	WW	YW	MILK
76	710	653	+1.5 P+	+41 P+	+74 P+	+23 P

49

ATLASTA FA 809U-31B

MALE JBS 31B 1820031 JANUARY 09 2014

S A V FINAL ANSWER 0035 AMF CAF NHF DDF
LFE BA LEWIS 809U 1496729
SOUTHERN OX ERICA 51T

SITZ TRAVELER 8180 AMF CAF NHF DDF
S A V EMULOUS 8145 CAF
SPRUCE VIEW EILEENMERE 74N
SOUTHERN OX ERICA 66J

S A V NET WORTH 4200 AMF CAF NHF DDF
ATLASTA P. DOTTIE 58Y 1620384
LADY OF PEAK DOT 713L

S A V 8180 TRAVELER 004 DMF DMF AMF CAF NHF OSF DDF
S A V MAY 2410
HF MOST WANTED 46H
LADY OF PEAK DOT 315J

ACTUAL BW	OCT. 2/14	ADJ. 205D	EPDS			
			BW	WW	YW	MILK
80	795	669	+2.6 P+	+46 P+	+81 P+	+24 P



Lot 50 - Atlasta FA 809U-80B

50

ATLASTA FA 809U-80B

MALE JBS 80B 1820029 JANUARY 16 2014

S A V FINAL ANSWER 0035 AMF CAF NHF DDF
 LFE BA LEWIS 809U 1496729
 SOUTHERN OX ERICA 51T

SITZ TRAVELER 8180 AMF CAF NHF DDF
 S A V EMULOUS 8145 CAF
 SPRUCE VIEW EILEENMERE 74N
 SOUTHERN OX ERICA 66J

REMITALL SUPEREVENT 532S
 ATLASTA BARBARA PERFECTION 53Y 1620395
 BB BARBARA PERFECTION 107S

JUSTAMERE 1118 CASH 665P
 KBJ ANNIE 829N
 SITZ TRAVELER 8180 AMF CAF NHF DDF
 SITZ BARBARA PERFECTION 770

ACTUAL BW	OCT. 2/14	ADJ. 205D	EPDS			
			BW	WW	YW	MILK
84	790	681	+3.4 P+	+52 P+	+87 P+	+23 P

TERMS ON YEARLING BULLS
50% Down - 50% Feb. 15
Details on page 2



Lot 51 - Atlasta 809U-179B

51

ATLASTA FA 809U-179B

MALE JBS 179B 1820038 FEBRUARY 18 2014

S A V FINAL ANSWER 0035 AMF CAF NHF DDF
 LFE BA LEWIS 809U 1496729
 SOUTHERN OX ERICA 51T

SITZ TRAVELER 8180 AMF CAF NHF DDF
 S A V EMULOUS 8145 CAF
 SPRUCE VIEW EILEENMERE 74N
 SOUTHERN OX ERICA 66J

WACHING FINAL ANSWER 6T
 ATLASTA EMMA 223Y 1620563
 BB EMMA E 20S

REMITALL RANCH 576R
 WACHING BLACK EDELLA 5024
 CONNEALY TIMELINE CAF DDF
 SITZ EMMA E 2873

ACTUAL BW	OCT. 2/14	ADJ. 205D	EPDS			
			BW	WW	YW	MILK
85	725	704	+3.8 P+	+51 P+	+84 P+	+19 P

52

ATLASTA LFA-23B

MALE JBS 23B UNREGISTERED JANUARY 06 2014

LFE BA LEWIS 809U 1496729

S A V FINAL ANSWER 0035 AMF CAF NHF DDF
 SOUTHERN OX ERICA 51T

ATLASTA ABBY 37R

TC STOCKMAN 365
 GDAR SVF RUSS 184B

ACTUAL BW	OCT. 2/14	
82	770	SELLING WITH NO PAPERS



Lot 52 - Atlasta LFA-23B

53

ATLASTA LFA-36B

MALE JBS 36B UNREGISTERED JANUARY 10 2014

LFE BA LEWIS 809U 1496729

S A V FINAL ANSWER 0035 AMF CAF NHF DDF
 SOUTHERN OX ERICA 51T

ATLASTA 37R-16Y

REMINGTON RIGHT TIME 124R
 ATLASTA ABBY 37R

ACTUAL BW	OCT. 2/14	
80	745	SELLING WITH NO PAPERS



BB Elslow 23P
Dam of Lot 54



Lot 54 - Atlasta 6807-79B

54

ATLASTA 6807-79B

MALE JBS 79B 1819880 JANUARY 16 2014

D H D TRAVELER 6807 AMF NHF
ATLASTA BB TRAVELER 6807 047T 1417947
LEACHMAN WENDY 9031

Q A S TRAVELER 23-4 AMF CAF NHF DDF
BEMINDFUL MAID D H D 0807
LEACHMAN PARAGON
LEACHMAN WENDY 1077

SITZ RAINMAKER 9422
BB ELSLOW 23P 1240723
SITZ ELSLOW 203

SITZ RAINMAKER 6169
SITZ ELLUNAS ELITE 1920
SITZ RITO 8980
SITZ ELSLOW 1571

ACTUAL BW	OCT. 2/14	ADJ. 205D	EPDS			
			BW	WW	YW	MILK
87	860	699	+3.5 P+	+40 P+	+69 P+	+16 P

55

ATLASTA TRAVELER 047T-59B

MALE JBS 59B 1819947 JANUARY 14 2014

D H D TRAVELER 6807 AMF NHF
ATLASTA BB TRAVELER 6807 047T 1417947
LEACHMAN WENDY 9031

Q A S TRAVELER 23-4 AMF CAF NHF DDF
BEMINDFUL MAID D H D 0807
LEACHMAN PARAGON
LEACHMAN WENDY 1077

ATLASTA FOREVER RUSS 25R
KBJ MISTY 204U 1448169
KBJ MISTY 813N

SVF SIEBRINGS FOREVER RUSS AMF CAF NHF DDF
ATLASTA ERICA 34H
LLB BATTLE CRY 97L
MINBURN MISTY 24K

ACTUAL BW	OCT. 2/14	ADJ. 205D	EPDS			
			BW	WW	YW	MILK
76	795	641	+2.1 P+	+29 P+	+54 P+	+13 P



KBJ Misty 204U
Dam of Lot 55



Lot 55 - Atlasta Traveler 047T-59B



Lot 56 - Atlasta 6807-131B

56

ATLASTA 6807-131B

MALE JBS 131B 1819871 JANUARY 29 2014

D H D TRAVELER 6807 AMF NHF
 ATLASTA BB TRAVELER 6807 047T 1417947
 LEACHMAN WENDY 9031

B/R NEW FRONTIER 095 AMF CAF NHF DDF
 ATLASTA ERICA 8P 1236640
 ATLASTA ERICA 57H

Q A S TRAVELER 23-4 AMF CAF NHF DDF
 BEMINDFUL MAID D H D 0807
 LEACHMAN PARAGON
 LEACHMAN WENDY 1077

B/R NEW DESIGN 036 AMF CAF NHF DDC
 WHITE FENCE PRIDE H1
 WINDOVER MATRIX 14F
 ATLASTA GIDGET 5'96

ACTUAL BW	OCT. 2/14	ADJ. 205D	EPDS			
			BW	WW	YW	MILK
78	740	630	+0.6 P+	+27 P+	+50 P+	+12 P



Atlasta Blackbird 16U
 Dam of Lot 57



Lot 57 - Atlasta Traveler 047T-160B

57

ATLASTA TRAVELER 047T-160B

MALE JBS 160B 1819944 FEBRUARY 06 2014

D H D TRAVELER 6807 AMF NHF
 ATLASTA BB TRAVELER 6807 047T 1417947
 LEACHMAN WENDY 9031

REMINGTON RIGHT TIME 124R
 ATLASTA BLACKBIRD 16U 1475270
 BB BLACKBIRD 33S

Q A S TRAVELER 23-4 AMF CAF NHF DDF
 BEMINDFUL MAID D H D 0807
 LEACHMAN PARAGON
 LEACHMAN WENDY 1077

LEACHMAN RIGHT TIME DMF AMF
 CRESCENT CREEK BLACKCAP 84E
 SITZ ALLIANCE 6595 DMF AMF CAF NHF DDF
 SITZ BLACKBIRD 2723

ACTUAL BW	OCT. 2/14	ADJ. 205D	EPDS			
			BW	WW	YW	MILK
84	745	653	+2.5 P+	+27 P+	+54 P+	+14 P

58

ATLASTA TRAVELER 047T-122B

MALE JBS 122B 1819945 JANUARY 25 2014

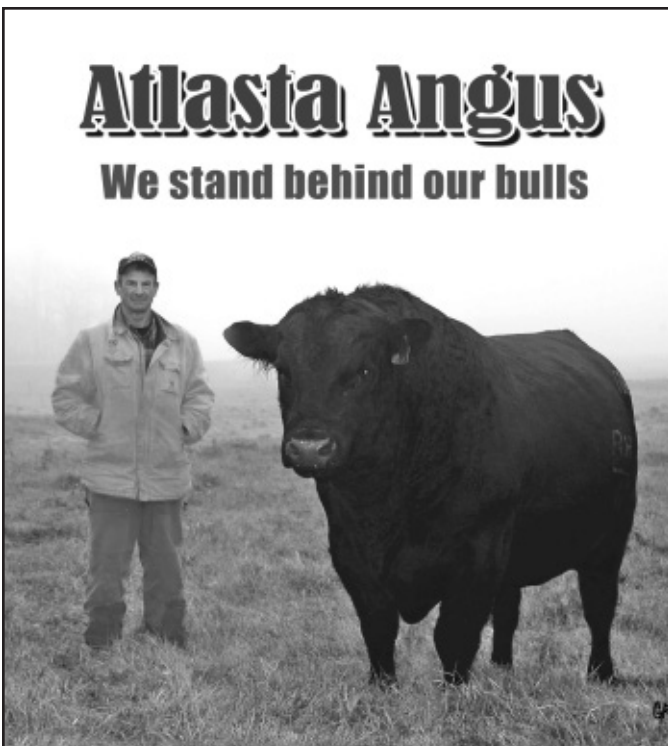
D H D TRAVELER 6807 AMF NHF
 ATLASTA BB TRAVELER 6807 047T 1417947
 LEACHMAN WENDY 9031

REMITALL SUPEREVENT 532S
 ATLASTA PATRICIA 155U 1473813
 ATLASTA PATRICIA 18R

Q A S TRAVELER 23-4 AMF CAF NHF DDF
 BEMINDFUL MAID D H D 0807
 LEACHMAN PARAGON
 LEACHMAN WENDY 1077

JUSTAMERE 1118 CASH 665P
 KBJ ANNIE 829N
 VERMLION DATELINE 7078 AMF CAF NHF DDF
 MLA PATRICIA 29'94

ACTUAL BW	OCT. 2/14	ADJ. 205D	EPDS			
			BW	WW	YW	MILK
86	670	565	+2.7 P+	+33 P+	+59 P+	+11 P



59

ATLASTA STOCKMAN 168B

MALE JBS 168B 1819876 FEBRUARY 10 2014

TC STOCKMAN 365 DDF
ATLASTA STOCKMAN 365-49Y 1620389
BB BARBARA PERFECTION 14N

TC STOCKMAN
TC PRIDE 0014
SITZ TRAVELER 8180 AMF CAF NHF DDF
SITZ BARBARA PERFECTION 770

SITZ TRADITION RLS 8702
BB BLACKCAP 15P 1240739
SITZ BLACKCAP 2233

VERMILION DATELINE 7078 AMF CAF NHF DDF
R L S EISA EVERGREEN 5018
G D A R TRAVELER 71 AMF CAF NHF DDF
SITZ BLACKCAP 1815

ACTUAL BW	OCT. 2/14	ADJ. 205D	EPDS			
			BW	WW	YW	MILK
84	820	729	+2.7 P+	+41 P+	+72 P+	+21 P



Lot 59 - Atlasta Stockman 168B

60

ATLASTA STOCKMAN 49Y-97B

MALE JBS 97B 1820069 JANUARY 20 2014

TC STOCKMAN 365 DDF
ATLASTA STOCKMAN 365-49Y 1620389
BB BARBARA PERFECTION 14N

TC STOCKMAN
TC PRIDE 0014
SITZ TRAVELER 8180 AMF CAF NHF DDF
SITZ BARBARA PERFECTION 770

ROYAL TRAVELER DRCC 6068S
ATLASTA EMMA E 177Z 1686124
BB EMMA E 15R

ALBERDA TRAVELER 416 AMF CAF NHF DDF
RALLY KATINKA 229B
PEAK DOT FAME 414M
SITZ EMMA E 2873

ACTUAL BW	OCT. 2/14	ADJ. 205D	EPDS			
			BW	WW	YW	MILK
82	700	653	+5.0 P+	+41 P+	+67 P+	+21 P



Lot 60 - Atlasta Stockman 97B

61

ATLASTA 37B

MALE JBS 37B UNREGISTERED JANUARY 10 2014

ATLASTA STOCKMAN 365-49Y 1620389

TC STOCKMAN 365 DDF
BB BARBARA PERFECTION 14N

ATLASTA BLACKCAP 232-162Z 1686115

LFE BA LEWIS 809U
ATLASTA 232 BLACKCAP 95X

ACTUAL BW	OCT. 2/14	
80	750	SELLING WITH NO PAPERS

62

ATLASTA 94B

MALE JBS 94B UNREGISTERED JANUARY 19 2014

ATLASTA STOCKMAN 365-49Y 1620389

TC STOCKMAN 365 DDF
BB BARBARA PERFECTION 14N

ATLASTA 37R-73Z

ATLASTA RUSS 120X
ATLASTA ABBY 37R

ACTUAL BW	OCT. 2/14	
88	710	SELLING WITH NO PAPERS



Atlasta Stockman 365-49Y

EPDs: BW: +2.7 WW: +36 YW: +65 Milk: +21 TM: +39 CE: +7.0 MCE: +14.0



Fun in the sun



Lot 63 - Atlasta Body Builder 174B

63 **ATLASTA BODY BUILDER 174B**

MALE JBS 174B 1820049 FEBRUARY 14 2014

DUFF BODY BUILDER 763
MWC BODY BUILDER 30Y 1659638
MWC ROSEBUD 71T

DCC 002 OUTLOOK 472 AMF NHF
O C C LADY BLACKCAP 753L
H A IMAGE MAKER 0415 AMF CAF NHF DDF
CRESCENT CREEK ROSEBUD 115F

LFE BA LEWIS 809U
ATLASTA GOLDETTE NW-84Z 1686063
ATLASTA CASH 54X

S A V FINAL ANSWER 0035 AMF CAF NHF DDF
SOUTHERN OX ERICA 51T
REMITALL SUPEREVENT 532S
BYMAN'S MISS GOLDETTE 3T

ACTUAL BW	OCT. 2/14	ADJ. 205D	EPDS			
			BW	WW	YW	MILK
78	780	778	+3.1 P+	+23 P+	+39 P+	+11 P

64 **ATLASTA BODY BUILDER RD-66B**

MALE JBS 66B 1820054 JANUARY 15 2014

DUFF BODY BUILDER 763
MWC BODY BUILDER 30Y 1659638
MWC ROSEBUD 71T

DCC 002 OUTLOOK 472 AMF NHF
O C C LADY BLACKCAP 753L
H A IMAGE MAKER 0415 AMF CAF NHF DDF
CRESCENT CREEK ROSEBUD 115F

ATLASTA FOREVER RUSS 37S
ATLASTA EVERGREEN BB 114Z 1685885
BB EISA EVERGREEN 18P

SVF SIEBRINGS FOREVER RUSS AMF CAF NHF DDF
ATLASTA ERICA 34H
SITZ PCAR EMULATION EXT 8668
SITZ EISA EVERGREEN 2313

ACTUAL BW	OCT. 2/14	ADJ. 205D	EPDS			
			BW	WW	YW	MILK
74	660	610	+1.5 P+	+19 P+	+33 P+	+10 P



KBJ Upmark 603

EPDs: BW: +2.7 WW: +45 YW: +87 Milk: +22 TM: +45 CE: +3.0 MCE: +6.0

65 **ATLASTA RD BODY BUILDER 30B**

MALE JBS 30B 1820039 JANUARY 09 2014

DUFF BODY BUILDER 763
MWC BODY BUILDER 30Y 1659638
MWC ROSEBUD 71T

DCC 002 OUTLOOK 472 AMF NHF
O C C LADY BLACKCAP 753L
H A IMAGE MAKER 0415 AMF CAF NHF DDF
CRESCENT CREEK ROSEBUD 115F

REMINGTON FINAL ANSWER 209T
ATLASTA DYNA LADY 2Z 1685855
ATLASTA DYNA LADY 69N

S A V FINAL ANSWER 0035 AMF CAF NHF DDF
BOTANY ANGUS ELLEN 14G
COLDSTREAM SKUKUM 52K
ATLASTA DYNA E 14H

ACTUAL BW	OCT. 2/14	ADJ. 205D	EPDS			
			BW	WW	YW	MILK
80	640	586	+2.9 P+	+19 P+	+30 P+	+6 P



MWC Body Builder 30Y

66 **ATLASTA RD BODY BUILDER 33B**

MALE JBS 33B 1820043 JANUARY 09 2014

DUFF BODY BUILDER 763
MWC BODY BUILDER 30Y 1659638
MWC ROSEBUD 71T

DCC 002 OUTLOOK 472 AMF NHF
O C C LADY BLACKCAP 753L
H A IMAGE MAKER 0415 AMF CAF NHF DDF
CRESCENT CREEK ROSEBUD 115F

ATLASTA BB TRAVELER 6807 047T
ATLASTA MAGGIE 62Z 1686051
ATLASTA MAGGIE 29W

D H D TRAVELER 6807 AMF NHF
LEACHMAN WENDY 9031
S A V NET WORTH 4200 AMF CAF NHF DDF
WHS MAGGIE 9M

ACTUAL BW	OCT. 2/14	ADJ. 205D	EPDS			
			BW	WW	YW	MILK
66	650	590	+0.2 P+	+12 P+	+25 P+	+8 P

67 **ATLASTA UPMARK 92B**

MALE JBS 92B 1820041 JANUARY 19 2014

JL UPMARK 0021
KBJ UPMARK 60Z 1675124
KBJ BLACKBIRD 345U

S A V BISMARCK 5682 AMF CAF NHF DDF
JL BALLOT 8070
CAR EFFICIENT 694
KBJ BLACKBIRD 536S

ATLASTA FOREVER RUSS 37S
ATLASTA BARNETT ERICA 9Z 1686011
BARNETT ERICA 876P

SVF SIEBRINGS FOREVER RUSS AMF CAF NHF DDF
ATLASTA ERICA 34H
MINBURN TRAVELER 74L
SASKALTA ERICA 876H

ACTUAL BW	OCT. 2/14	ADJ. 205D	EPDS			
			BW	WW	YW	MILK
85	790	724	+5.2 P+	+49 P+	+85 P+	+19 P

Coming Two-Year-Old Bulls



Lot 68 - Atlasta Cash Jr. 21A

68

ATLASTA CASH JR. 21A

MALE JBS 21A 1745742 JANUARY 01 2013

JUSTAMERE 1118 CASH 665P
REMITALL SUPEREVENT 532S 1338191
KBJ ANNIE 829N

EXAR BIG TIMBER 1118
REMITALL KEEPSAKE 143L
LLB TRAVELER 297K
KBJ ANNIE 438L

GGRR TRAFALGAR 19S
GGRR PRIDE 14U 1440883
ENNS PRIDE 7R

SCA 03H OF IDEAL 1418
SCA LADY ANN 03K
G A R GRID MAKER AMF CAF NHF DDF
W B PRIDE 209A

ACTUAL BW	ADJ. 205D	EPDS			
		BW	WW	YW	MILK
95	764	+5.4 34%	+63 23%	+104 7%	+17 13%

69

ATLASTA ZORZAL 10A

MALE JBS 10A 1746939 JANUARY 01 2013

TRES MARIAS 6301 ZORZAL
WAF ZORZAL 321U AMF CAF NHF OSF 1485949
TRES MARIAS 6582 CUMELLEN 563Z

TRES MARIAS 5887 HORNERO
TRES MARIAS 4850 WIND EXT
TRES MARIAS 5837 CUMELLEN
TRES MARIAS 5632 CHAPAR 502E

TC STOCKMAN 365 DDF
ATLASTA BLACK LADY 42L 1044413
MLA BLACKCAP 21'95

TC STOCKMAN
TC PRIDE 0014
WHS PLAYBOY 5B
MLA BLACKCAP 4'90

ACTUAL BW	ADJ. 205D	EPDS			
		BW	WW	YW	MILK
70	653	+1.2 37%	+29 27%	+46 18%	+5 12%



Lot 69 - Atlasta Zorzal 10A

70

ATLASTA ZORZAL 19A

MALE JBS 19A 1745808 JANUARY 01 2013

TRES MARIAS 6301 ZORZAL
WAF ZORZAL 321U AMF CAF NHF OSF 1485949
TRES MARIAS 6582 CUMELLEN 563Z

TRES MARIAS 5887 HORNERO
TRES MARIAS 4850 WIND EXT
TRES MARIAS 5837 CUMELLEN
TRES MARIAS 5632 CHAPAR 502E

DURALTA 6446D TRAVELER 5K
WHS MARGARET 66M 1140244
WHS ROSEBUD 1E

ALBERDA TRAVELER 416 AMF CAF NHF DDF
WAYSIDE PRIDE 10H
GLESBAR SAMSUN 7C
WHS ROSEBUD 78C

ACTUAL BW	ADJ. 205D	EPDS			
		BW	WW	YW	MILK
90	657	+4.1 35%	+28 25%	+44 16%	+6 11%



Lot 71 - Atlasta Traveller 6068S-199A

71

ATLASTA TRAVELLER 6068S-199A

MALE JBS 199A 1746930 FEBRUARY 23 2013

ALBERDA TRAVELER 416 AMF CAF NHF DDF
ROYAL TRAVELER DRCC 6068S 1353251
RALLY KATINKA 229B

D H D TRAVELER 6807 AMF NHF
ALBERDA QUEEN KIMBERLY 22Z
N BAR EMULATION EXT AMF CAF NHF DDF
HARMONY HILL KATINKA 229

HF COMMANDER 60P
ATLASTA GT WENDY 24T 1405456
ATLASTA WENDY 16P

TC FREEDOM 104 AMF CAF NHF DDF
DURALTA 14C ECHO 32E
G T MAXIMUM AMF CAF NHF DDF
MLA WENDY 1'94

ACTUAL BW	ADJ. 205D	EPDS			
		BW	WW	YW	MILK
85	678	+2.4 35%	+33 25%	+60 10%	+17 13%

Coming Two-Year-Old Bulls

72 ATLASTA TRAVELLER 6068S-221A

MALE JBS 221A 1745767 MARCH 28 2013

ALBERDA TRAVELER 416 AMF CAF NHF DDF
ROYAL TRAVELER DRCC 6068S 1353251
RALLY KATINKA 229B

D H D TRAVELER 6807 AMF NHF
ALBERDA QUEEN KIMBERLY 222
N BAR EMULATION EXT AMF CAF NHF DDF
HARMONY HILL KATINKA 229

DMM STOCKMAN 106J
ATLASTA ERICA 50N 1153329
MLA ERICA 6'94

TC STOCKMAN 365 DDF
DMM MISS ESSENCE 22B
G D A R WHAM 021 AMF CAF NHF DDF
MLA ERICA 4Y

ACTUAL BW	ADJ. 205D	EPDS			
		BW	WW	YW	MILK
78	651	+1.6 35%	+25 25%	+50 10%	+19 13%



Lot 73 - Atlasta LFA 809U-192A

73 ATLASTA LFA 809U-192A

MALE JBS 192A 1745673 FEBRUARY 17 2013

S A V FINAL ANSWER 0035 AMF CAF NHF DDF
LFE BA LEWIS 809U 1496729
SOUTHERN OX ERICA 51T

SITZ TRAVELER 8180 AMF CAF NHF DDF
S A V EMULOUS 8145 CAF
SPRUCE VIEW EILEENMERE 74N
SOUTHERN OX ERICA 66J

ROYAL TRAVELER DRCC 6068S
ATLASTA ERICA 213X 1645829
ATLASTA ERICA 51S

ALBERDA TRAVELER 416 AMF CAF NHF DDF
RALLY KATINKA 229B
G T MAXIMUM AMF CAF NHF DDF
MLA ERICA 24'92

ACTUAL BW	ADJ. 205D	EPDS			
		BW	WW	YW	MILK
80	661	+1.5 34%	+42 23%	+73 10%	+18 10%



Lot 74 - Atlasta LFA 809U-165A

74 ATLASTA LFA 809U-165A

MALE JBS 165A 1745669 FEBRUARY 01 2013

S A V FINAL ANSWER 0035 AMF CAF NHF DDF
LFE BA LEWIS 809U 1496729
SOUTHERN OX ERICA 51T

SITZ TRAVELER 8180 AMF CAF NHF DDF
S A V EMULOUS 8145 CAF
SPRUCE VIEW EILEENMERE 74N
SOUTHERN OX ERICA 66J

ATLASTA FOREVER RUSS 37S
ATLASTA 33H BARBARA 26X 1573511
ATLASTA BARBARA 77P

SVF SIEBRINGS FOREVER RUSS AMF CAF NHF DDF
ATLASTA ERICA 34H
ATLASTA BOMBER 96M
ATLASTA BARBARA 133M

ACTUAL BW	ADJ. 205D	EPDS			
		BW	WW	YW	MILK
83	726	+2.5 34%	+45 23%	+75 9%	+21 10%



Lot 76 - Atlasta RRT 200A

75 ATLASTA RRT 197A

MALE JBS 197A 1745776 FEBRUARY 20 2013

LEACHMAN RIGHT TIME DMF AMF
REMINGTON RIGHT TIME 124R 1291957
CRESCENT CREEK BLACKCAP 84E

N BAR EMULATION EXT AMF CAF NHF DDF
LEACHMAN ERICA 0025
RITO 8094 PRAIRIELANE 2060 AMF
CRESCENT CREEK BLACKCAP 112A

PEAK DOT FAME 414M
BB EMMA E 5R 1297925
SITZ EMMA E 3003

S A R FAME 2089
DUCHESS OF PEAK DOT 642K
SITZ RITO 7491
SITZ EMMA E 2517

ACTUAL BW	ADJ. 205D	EPDS			
		BW	WW	YW	MILK
82	752	+2.2 36%	+37 25%	+64 12%	+21 15%

76 ATLASTA RRT 200A

MALE JBS 200A 1745822 FEBRUARY 24 2013

LEACHMAN RIGHT TIME DMF AMF
REMINGTON RIGHT TIME 124R 1291957
CRESCENT CREEK BLACKCAP 84E

N BAR EMULATION EXT AMF CAF NHF DDF
LEACHMAN ERICA 0025
RITO 8094 PRAIRIELANE 2060 AMF
CRESCENT CREEK BLACKCAP 112A

HF FORMATION 13K
ATLASTA PATRICIA 49R 1276717
ATLASTA PATRICIA 220M

CONNELLY KINCAID
DURALTA 14C ECHO 32E
DMM STOCKMAN 106J
ATLASTA PATRICIA 12H

ACTUAL BW	ADJ. 205D	EPDS			
		BW	WW	YW	MILK
83	642	+2.6 35%	+27 25%	+55 9%	+21 15%

Coming Two-Year-Old Bulls



Lot 77 - Atlasta Net Worth 112U-224A

Lot 79 - Atlasta Focus 20X-198A

77 ATLASTA NET WORTH 112U-224A

MALE JBS 224A 1745757 APRIL 01 2013

S A V NET WORTH 4200 AMF CAF NHF DDF
BROOKMORE NETWORTH 112U 1441286
BROOKMORE RUBY 20K

S A V 8180 TRAVELER 004 DMF DWF AMF CAF NHF OSF DDF
S A V MAY 2410
ALBERDA TRAVELER 416 AMF CAF NHF DDF
BROOKMORE RUBY 77H

B/R NEW FRONTIER 095 AMF CAF NHF DDF
ATLASTA PRIDE 75U 1473691
ATLASTA PRIDE 12K

B/R NEW DESIGN 036 AMF CAF NHF DDF
WHITE FENCE PRIDE H1
TC STOCKMAN 365 DDF
MLA BARBARA 14'93

ACTUAL BW	ADJ. 205D	EPDS			
		BW	WW	YW	MILK
88	704	+4.8 35%	+43 25%	+86 13%	+13 13%

78 ATLASTA GRID MAKER 204A

MALE JBS 204A 1745823 FEBRUARY 27 2013

G A R GRID MAKER AMF CAF NHF DDF
LVA 17M ASCENT 4X 1543665
NOBLE ACRES KARAMA 17M

G D A R TRAVELER 044 AMF CAF NHF DDF
G A R PRECISION 2536 AMF NHF
NOBLE LINE RAIN BOY 1K
WAVY KARAMA 17K

MYTTY IN FOCUS AMF CAF NHF DDF
BB ELSLOW 2S 1364908
BB ELSLOW 23P

S A F FOCUS OF E R AMF CAF NHF DDF
MYTTY COUNTESS 906
SITZ RAINMAKER 9422
SITZ ELSLOW 203

ACTUAL BW	ADJ. 205D	EPDS			
		BW	WW	YW	MILK
64	690	+0.5 34%	+39 23%	+73 12%	+23 13%



Lot 78 - Atlasta Grid Maker 204A

79 ATLASTA FOCUS 20X-198A

MALE JBS 198A 1745674 FEBRUARY 22 2013

MYTTY IN FOCUS AMF CAF NHF DDF
CU MIGHTY FOCUS 20X 1592705
CU K FRONTIER 050U OF 081

S A F FOCUS OF E R AMF CAF NHF DDF
MYTTY COUNTESS 906
KCS NEW FRONTIER 095-5601
C U CONNIE 081K OF 620

ATLASTA FOREVER RUSS 37S
ATLASTA BRIAR 15P-26Y 1649132
BARNETT BRIAR 15P

SVF SIEBRINGS FOREVER RUSS AMF CAF NHF DDF
ATLASTA ERICA 34H
TC ADVANTAGE AMF CAF NHF DDF
BARNETT BRIAR 15M

ACTUAL BW	ADJ. 205D	EPDS			
		BW	WW	YW	MILK
70	647	+0.3 30%	+31 18%	+61 8%	+19 9%

80 ATLASTA CD 24X-121A

MALE JBS 121A 1762810 JANUARY 17 2013

CONNEALY DATELINE DDF
ATLASTA CD DATELINE 24X 1582928
BB BARBARA PERFECTION 12N

D H D TRAVELER 6807 AMF NHF
EILA EILA OF CONANGA AMF DDF
SITZ TRAVELER 8180 AMF CAF NHF DDF
SITZ BARBARA PERFECTION 770

ROYAL TRAVELER DRCC 6068S
ATLASTA BARBARA JET 60Y 1620406
ATLASTA BB BARB JET 050T

ALBERDA TRAVELER 416 AMF CAF NHF DDF
RALLY KATINKA 229B
CONNEALY TIMELINE CAF DDF
BB BARBARAMERE JET 20P

ACTUAL BW	ADJ. 205D	EPDS			
		BW	WW	YW	MILK
82	746	+2.4 31%	+47 20%	+79 9%	+17 10%



Lot 80 - Atlasta CD 24X-121A

Coming Two-Year-Old Bulls



Lot 82 - Atlasta 196A

81 **ATLASTA PREDOMINANT 335Y-150A**

MALE JBS 150A 1745750 JANUARY 24 2013

ATLASTA PREDOMINANT 31W
KBJ PREDOMINANT 335Y 1612645
KBJ QUEEN 203S

S A V 004 PREDOMINANT 4438 AMF CAF NHF DDF
ATLASTA WENDY 35K
BAR-E-L QUANTUM 124L
KBJ QUEEN 69X

BASIN MAX 602C AMF CAF NHF DDF
ATLASTA WENDY 27U 1473678
ATLASTA WENDY 37H

G T MAXIMUM AMF CAF NHF DDF
BASIN ELINE ERICA 315U
MACC INDIAN NATION 66F
MLA WENDY 3'95

ACTUAL BW	ADJ. 205D	EPDS			
		BW	WW	YW	MILK
88	729	+3.1 33%	+39 21%	+70 10%	+16 11%

82 **ATLASTA 196A**

MALE JBS 196A UNREGISTERED FEBRUARY 20 2013

BROOKMORE NET WORTH 112U 1441286

S A V NET WORTH 4200 AMF CAF NHF DDF
BROOKMORE RUBY 20K

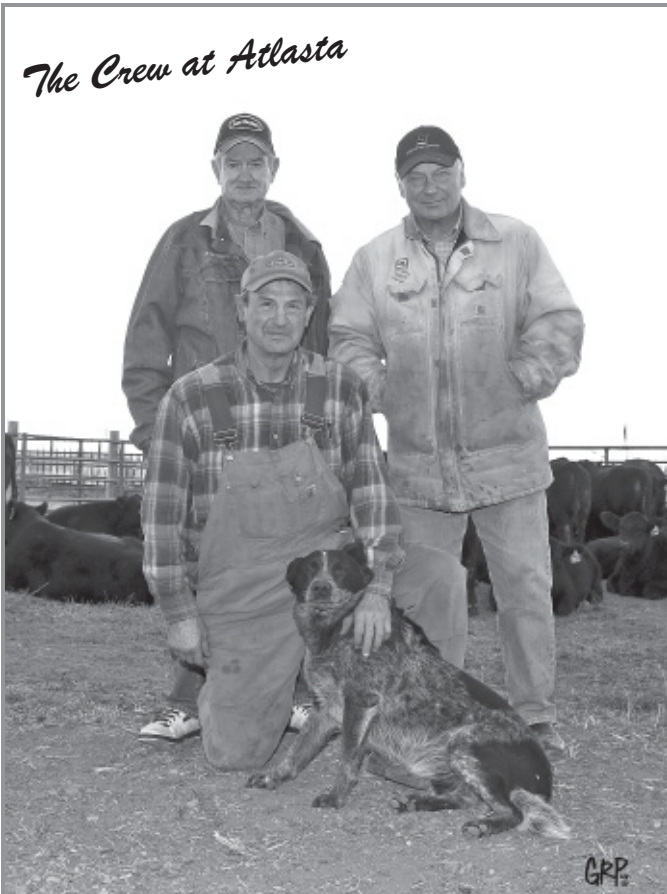
ATLASTA BRIDE 58W 1528069

REMINGTON RIGHT TIME 124R
ATLASTA BRIDE 137R

ACTUAL BW	ADJ. 205D	SELLING WITH NO PAPERS
95	N/A	

Thanks from all of us!

The Crew at Atlasta



All Coming Two-Year-Old Bulls & Females are to be picked up after the sale

Yearling bulls may be left until Feb. 15/2015
but if you take them right after the sale
\$100 per bull will be
deducted from your invoice.

Terms for Yearling Bulls

50% Down Sale Day
50% February 15, 2015

Buyer must insure all bulls left at Atlasta
\$2.50 per day after February 15



Seriously Black Select Females

Brookmore Angus

Jack & Barb Hart

General Delivery, Brookdale, MB R0K 0G0

Ph: 204-476-2607 Cell: 204-476-6696 email: brookmoreangus@mts.net



Jack & Barb

Jack and Barb would like to welcome you to the Seriously Black Select Female portion of this sale. They are pleased to bring eight females right off the top of the replacement pen, these heifers were a stand out when we selected them late summer as you will notice they represent generations of top A.I. breeding and are guaranteed safe in calf to some of the top A.I. bulls in the business known for calving ease.

Jack and Barb are very down to earth Angus breeders but they are extremely proud of the cattle they produce, these heifers are sisters to bulls featured in the Cattleman's Connection Bull Sale, one of the very best in Canada.

The females that have sold in the past Seriously Black segment of this sale have become some of the very top females in the herds they have gone into.

We would like to thank Jack and Barb for their commitment to this sale and the great Angus cattle they have bred.

Doug Henderson & Brian Sutter



S A V Angus Valley 1867



Jindra Double Vision

Ref S A V ANGUS VALLEY 1867

Male IMP 1867Y 1719214 ET AMF CAF NHF DDF January 05 2011

TC GRIDIRON 258 AMF CAF NHF DDF
S A V IRON MOUNTAIN 8066 AMF CAF NHF MAF DDF 1493936
S A V MADAME PRIDE 3249 CAF DDF

S A F 598 BANDO 5175 AMF CAC DDF
S A V MAY 2397 CAF 14140872
S A V MADAME PRIDE 3249 CAF DDF

G A R GRID MAKER AMF CAF NHF DDF
TC BLACKBIRD 7049
S A V 8180 TRAVELER 004 DMF DMF AMF CAF NHF OSF DDF
S A V MADAME PRIDE 8264 DDC

BON VIEW BANDO 598 AMF CAC DDF
S A F ROYAL LASS 1002
LEACHMAN RIGHT TIME DMF AMF
S A R PROSPECTOR MAY 9124 DDF

EPDs: BW: +3.2 P WW: +6.2 P YW: +10.2 P Milk: +22 P
TM: +5.2 CE: +4.5 P MCE: +9.0 P

This exciting next generation calving ease sire follows in the footsteps of Final Answer and Bismarck. This great Iron Mountain son has an excellent EPD profile and will add extra length and dimension.

Ref JINDRA DOUBLE VISION

Male IMP 730X 1764385 AMF CAF NHF DDF February 08 2010

BON VIEW NEW DESIGN 878 AMF CAF NHF DDF
CONNELLY REFLECTION AMF CAF NHF DDF 14528330
HAPPY GRILL OF CONANGA 6260

HOFF LIMITED EDITION SC 594 AMF CAF NHF DDF
HOFF RACHEL 8312 405 14806260
HOFF MISS EXPO S C 4223

EPDs: BW: -2.79% WW: +7.5 55% YW: +14.2 55% Milk: +26 28%
CE: +12.62% MCE: +13.20%

Jindra Double Vision is an outcross powerhouse offering double digit calving ease and docility along with breed leading growth EPDs, \$W and \$B. This is a powerful wide based, deep bodied bull with solid feet and legs; a heavy weight.

Brookmore Angus



Lot 83 - Brookmore Enchantress 2A

83 BROOKMORE ENCHANTRESS 2A

Female JVJ 2A 1765638 January 05 2013

S A V FINAL ANSWER 0035 AMF CAF NHF DDF
CONNELLY RIGHT ANSWER 746 AMF CAF NHF DDF **1547517**
 HAPPY DELL OF CONANGA 262

SITZ TRAVELER 8180 AMF CAF NHF DDF
 S A V EMULOUS 8145 CAF
 HYLINE RIGHT TIME 338 AMF CAF NHF DDF
 HAPPY DAZE OF CONANGA 6260

BROOKMORE NEUTRON 72R
BROOKMORE ENCHANTRESS 229Y 1603757
 BROOKMORE ENCHANTRESS 175S

S A NEUTRON 377 AMF CAF NHF DDF
 BROOKMORE TIBBIE 57M
 TC FOREMAN 016 DDF
 BROOKMORE ENCHANTRESS 190H

BW: 64 lbs. Adj. 205D: 641 lbs. Adj. 365D: 992 lbs.
 EPDs: BW: +0.9 37% WW: +67 28% YW: +119 28% Milk: +25 19%
 TM: +59 CE: +7.0 27% MCE: +9.0 15%

Brookmore Enchantress 2A is a stylish daughter of Connealy Right Answer, one of the breeds most heavily used bulls. He sires calving ease, high performance cattle with quiet attitudes.

This female is a daughter of a top producing Brookmore Neutron 72R daughter. 72R has left a very positive influence in the Brookmore program.

Bred A.I. April 30, 2014 to S A V Angus Valley 1867 -1719214-. Preg checked safe to the A.I. date.



Lot 84 - Brookmore Lucy 24A

84 BROOKMORE LUCY 24A

Female JVJ 24A 1753084 January 11 2013

S A V FINAL ANSWER 0035 AMF CAF NHF DDF
CONNELLY RIGHT ANSWER 746 AMF CAF NHF DDF **1547517**
 HAPPY DELL OF CONANGA 262

SITZ TRAVELER 8180 AMF CAF NHF DDF
 S A V EMULOUS 8145 CAF
 HYLINE RIGHT TIME 338 AMF CAF NHF DDF
 HAPPY DAZE OF CONANGA 6260

S A V BISMARCK 5682 AMF CAF NHF DDF
BROOKMORE LUCY 124Y 1603950
 BROOKMORE LUCY 187U

G A R GRID MAKER AMF CAF NHF DDF
 S A V ABIGALE 0451
 S A V NET WORTH 4200 AMF CAF NHF DDF
 BROOKMORE LUCY 143L

BW: 60 lbs. Adj. 205D: 603 lbs. Adj. 365D: 926 lbs.
 EPDs: BW: +0.5 37% WW: +68 28% YW: +114 29% Milk: +28 20%
 TM: +62 CE: +10.0 29% MCE: +11.0 17%

Brookmore Lucy 24A is a powerfully bred heifer with every sire in her pedigree a breed leading A.I. sire.

This female has the breeding to raise many top herdsires in her lifetime. Great EPDs and a very pleasant profile.

Bred A.I. April 27, 2014 to S A V Angus Valley 1867 -1719214-. Preg checked safe to the A.I. date.



Lot 85 - Brookmore Maxie 35A

85 BROOKMORE MAXIE 35A

Female JVJ 35A 1753095 January 14 2013

S A V FINAL ANSWER 0035 AMF CAF NHF DDF
CONNELLY RIGHT ANSWER 746 AMF CAF NHF DDF **1547517**
 HAPPY DELL OF CONANGA 262

SITZ TRAVELER 8180 AMF CAF NHF DDF
 S A V EMULOUS 8145 CAF
 HYLINE RIGHT TIME 338 AMF CAF NHF DDF
 HAPPY DAZE OF CONANGA 6260

SITZ UPWARD 307R DMF AMF CAF NHF DDF
BROOKMORE MAXIE 166Y CAF **1658725**
 BROOKMORE MAXIE 219S CAC

CONNELLY ONWARD DMF AMF CAF NHF DDF
 SITZ HENRIETTA PRIDE 81M
 S A F 598 BANDO 5175 AMF CAC DDF
 BATTLE LAKE MAXIE 9N

BW: 72 lbs. Adj. 205D: 640 lbs. Adj. 365D: 970 lbs.
 EPDs: BW: +2.2 37% WW: +67 28% YW: +120 29% Milk: +33 20%
 TM: +67 CE: +6.0 29% MCE: +9.0 17%

Brookmore Maxie 35A, also has a power packed pedigree with every sire representing a great proven A.I. sire. This is a sensational heifer's first calf out of one of those exceptional Sitz Upward daughters.

Bred A.I. April 8, 2014 to S A V Angus Valley 1867 -1719214-. Preg checked safe to the A.I. date.

Brookmore Angus

86 BROOKMORE HEROINE 108A

Female JVJ 108A 1752656 January 30 2013

CONNEALY ONWARD DMF AMF CAF NHF DDF
SITZ UPWARD 307R DMF AMF CAF NHF DDF 1385926
SITZ HENRIETTA PRIDE 81M

CONNEALY LEAD ON DMF AMF CAF NHF DDF
ALTUNE OF CONANGA 6104
SITZ VALUE 7097 AMF CAF NHF DDF
SITZ HENRIETTA PRIDE 1370

S A V 004 DENSITY 4336 AMF CAF NHF DDF
BROOKMORE HEROINE 52U 1441484
BROOKMORE HEROINE 59R

S A V 8180 TRAVELER 004 DMF DMF AMF CAF NHF OSF DDF
S A V MAY 7238 CAF DDF
MVF STOCKMAN 45H
BROOKMORE HEROINE 23K

BW: 86 lbs. Adj. 205D: 556 lbs. Adj. 365D: 906 lbs.
EPDs: BW: +3.6 37% WW: +57 28% YW: +103 28% Milk: +31 22%
TM: +60 CE: +4.0 29% MCE: +7.0 19%

Brookmore Heroine 108A has loads of maternal strength here, both Sitz Upward and Density have left some of the best females in the business this one is no exception.

There is a reason Sitz Upward is ranked #1 for registrations in 2013, he is ranked in the top 1% of the breed for growth and maternal milk.

Bred A.I. April 8, 2014 to Jindra Double Vision -1764385-. Preg checked safe to the A.I. date.



Lot 86 - Brookmore Heroine 108A

87 BROOKMORE DAISY 142A

Female JVJ 142A 1752727 February 03 2013

CONNEALY ONWARD DMF AMF CAF NHF DDF
SITZ UPWARD 307R DMF AMF CAF NHF DDF 1385926
SITZ HENRIETTA PRIDE 81M

CONNEALY LEAD ON DMF AMF CAF NHF DDF
ALTUNE OF CONANGA 6104
SITZ VALUE 7097 AMF CAF NHF DDF
SITZ HENRIETTA PRIDE 1370

S A V HERITAGE 6295 AMF CAF NHF DDF
BROOKMORE DAISY 163W 1516070
BROOKMORE DAISY 204S

CAR DUKE 104
S A V BLACKCAP MAY 4136 CAF
CONNEALY FREIGHTLINER AMF CAF NHF DDF
BROOKMORE DAISY 153N

BW: 82 lbs. Adj. 205D: 577 lbs. Adj. 365D: 915 lbs.
EPDs: BW: +3.2 37% WW: +62 29% YW: +114 29% Milk: +31 22%
TM: +62 CE: +3.0 29% MCE: +8.0 18%

Brookmore Daisy 142A, is an excellent Upward daughter out of a great young Heritage female. Great EPDs and a powerful pedigree with every sire represented, a breed leader.

Bred A.I. April 8, 2014 to Jindra Double Vision -1764385-. Preg checked safe to A.I. date.



Lot 87 - Brookmore Daisy 142A

88 BROOKMORE KARAMA 110A

Female JVJ 110A 1752624 January 30 2013

TRES MARIAS 6301 ZORZAL
WAF ZORZAL 321U AMF CAF NHF OSF 1485949
TRES MARIAS 6582 CUMELEN 5632

TRES MARIAS 5887 HORNERO
TRES MARIAS 4850 WIND EXT
TRES MARIAS 5837 CUMELEN
TRES MARIAS 5632 CHAPAR 5026

S A F 598 BANDO 5175 AMF CAC DDF
BROOKMORE KARAMA 174T CAF 1375974
BROOKMORE KARAMA 51P

BON VIEW BANDO 598 AMF CAC DDF
S A F ROYAL LASS 1002
S A NEUTRON 377 AMF CAF NHF DDF
BROOKMORE KARAMA 45H

BW: 94 lbs. Adj. 205D: 611 lbs. Adj. 365D: 947 lbs.
EPDs: BW: +5.3 36% WW: +47 27% YW: +74 26% Milk: +9 11%
TM: +33 CE: -2.0 22% MCE: +4.0 7%

Brookmore Karama 110A, a daughter of the outcross Argentine bull, Zorzal whose sons topped a number of major bull sales last spring. The Zorzal daughters are picture perfect and have all the makings of great cows.

Bred A.I. April 8, 2014 to Jindra Double Vision -1764385-. Preg checked safe to A.I. date.



Lot 88 - Brookmore Karama 110A

Brookmore Angus



Lot 89 - Brookmore Aleta 60A

89 BROOKMORE ALETA 60A

Female JVJ 60A 1752623 January 21 2013

TRES MARIAS 6301 ZORZAL
WAF ZORZAL 321U AMF CAF NHF OSF **1485949**
 TRES MARIAS 6582 CUMELLEN 5632

TRES MARIAS 5887 HORNERO
 TRES MARIAS 4850 WIND EXT
 TRES MARIAS 5837 CUMELLEN
 TRES MARIAS 5632 CHAPAR 5026

S A F 598 BANDO 5175 AMF CAC DDF
BROOKMORE ALETA 172T CAF **1375969**
 BROOKMORE ENCHANTRESS 26P

BON VIEW BANDO 598 AMF CAC DDF
 S A F ROYAL LASS 1002
 BUSHS GRAND DESIGN AMF CAF NHF DDF
 BROOKMORE ENCHANTRESS 55M

BW: 90 lbs. Adj. 205D: 548 lbs. Adj. 365D: 799 lbs.
 EPDs: BW: +4.8 36% WW: +43 27% YW: +65 27% Milk: +8 12%
 TM: +30 CE: +1.0 22% MCE: +5.0 8%

Brookmore Aleta 60A is a $\frac{3}{4}$ sister to the previous female, a Zorzal out of a Bando 5175. Loads of maternal strength here with style and type. The Zorzal females look like they will have lots of future.

Bred A.I. April 9, 2014 to Jindra Double Vision -1764385-. Preg checked safe to A.I. date.



Lot 90 - Brookmore Daisy 150A

90 BROOKMORE DAISY 150A

Female JVJ 150A 1765632 February 04 2013

S A V FINAL ANSWER 0035 AMF CAF NHF DDF
S A V PIONEER 7301 AMF CAF NHF DDF **1481377**
 S A V BLACKBIRD 5297 CAC

SITZ TRAVELER 8180 AMF CAF NHF DDF
 S A V EMULOUS 8145 CAF
 BOYD NEW DAY 8005 AMF CAF NHF DDF
 S A V BLACKBIRD 1082 CAC

MVF STOCKMAN 45H
BROOKMORE DAISY 264S 1345660
 BROOKMORE DAISY 208H

TC STOCKMAN 365 DDF
 DODSWOOD ENCHANTRESS MAX-90
 EBON HILL EQUALIZER 4996
 MVBF DAISY 4A

BW: 100 lbs. Adj. 205D: 575 lbs. Adj. 365D: 948 lbs.
 EPDs: BW: +6.4 37% WW: +52 29% YW: +94 28% Milk: +21 22%
 TM: +47 CE: -7.0 27% MCE: +0.0 17%

Brookmore Daisy 150A is sired by S A V Pioneer, one of Final Answers greatest sons. Pioneer is known for his great daughters that are broody and deep ribbed with outstanding udders. MVF Stockman, has many top daughters in the Brookmore program and he was one of the top 365 sons used in Canada.

Bred A.I. April 30, 2014 to S A V Angus Valley 1867 -1719214-. Preg checked safe to A.I. date.



WAF Zorzal 321U



S A V Pioneer 7301

Seriously Black Select Females

Remitall West

Bryan, Annette, Emily, Isaac & Zachary Latimer
Box 16, Site 2, RR 4, Olds, AB T4H 1T8
Bryan's Cell: 403-556-0301 Annette's Cell: 403-556-0607



The Latimer Family at Remitall West

Welcome to the Atlasta Bull and Seriously Black Select Female Sale. A special thank you to Brian & Judy Sutter for inviting us to again be a part of this leading Angus event. The five heifer calves we have selected for this sale are right off the top of this year's calf crop. They were raised on just their mommas and pasture till weaning in late October to endure soundness and future production. These elite heifer calves offer not only a great phenotype but are also sired by internationally recognized and proven sires. Take note this powerful set of show quality heifer calves will be tie broke and quiet for interested juniors.

We look forward to seeing you at the sale. If we can be of any assistance please give us a call.

Bryan, Annette, Emily, Isaac & Zachary Latimer
Remitall West

91 REMITALL WEST EVENING TINGE 98B

Female REMI 98B 1783609 February 25 2014

REMITALL NIGHTHAWK 37N
REMITALL H RACHIS 21R AMF NHF OSF 1274555
HENDERSON MISSIE 32'02

HF TIGER 5T AMF CAF NHF OSF DDF
HF EVENING TINGE 13W 1497018
HF EVENING TINGE 93T

VERMILION DATELINE 7078 AMF CAF NHF DDF
DIAMOND D EVERA 073G
O G L BATTLE CRY 427 128 DDF
HENDERSON MISSIE 2'97

HF KODIAK 5R AMF CAF NHF MAF DDF
HF ECHO 84R
RIVERBEND POWERLINE 0050
HF EVENING TINGE 48K

BW: 85 lbs.
EPDs: BW: +3.5 P WW: +57 P YW: +108 P Milk: +24 P
TM: +52 CE: -3.5 P MCE: +4.5 P

A powerful heifer to lead off our heifer calves. Made just the way you want with that extra thickness, depth of body, softness, beautiful hair coat and broody look. Her dam 13W is an excellent uddered female that is stout made and easy doing. 13W stood second in class at the 2009 World Angus Forum. The sire, Rachis 21R is a former Canadian National Champion bull, a breed leader for performance and is now renowned for his awesome daughters.



Lot 91 - Remitall West Evening Tinge 98B

92 REMITALL WEST FOREVER LADY 29B

Female REMI 29B 1783622 January 30 2014

SANDY BAR ADVANTAGE 43M DDF
HF KODIAK 5R AMF CAF NHF MAF DDF 1274305
WILBAR RUBY 955N

REMITALL TWENTY X 910T AMF CAF NHF OSF MAF
REMITALL W FOREVER LADY 79X 1607952
REMITALL FOREVER LADY 799R

TC ADVANTAGE AMF CAF NHF DDC
SANDY BAR JEMINA 44K
VERMILION YELLOWSTONE AMF CAF NHF DDF
WILBAR RUBY 161J

REMITALL PILOT 103P
REMITALL H FANCY 40R
F A R KRUGERRAND 410H AMF CAF NHF DDF
GDAR FOREVER LADY 0100

BW: 70 lbs.
EPDs: BW: +1.4 P WW: +46 P YW: +84 P Milk: +20 P
TM: +43 CE: +7.0 P MCE: +6.5 P

A very special heifer calf here, not only for her impressive phenotype but also for her stellar genetic makeup. This heifer is exceptionally deep bodied, wide topped, long bodied and angular in her design. A great daughter of the famous Forever Lady cow family, highly respected for their production and ability to produce breed leading herd sires. Kodiak daughters are a valued commodity; his semen is hard to get a hold of so take advantage here.



Lot 92 - Remitall West Forever Lady 29B

Remitall West



Lot 93 - Remitall West Countess 78B

93 REMITALL WEST COUNTESS 78B

Female REMI 78B 1783617 February 15 2014

SANDY BAR ADVANTAGE 43M DDF
HF KODIAK 5R AMF CAF NHF MAF DDF 1274305
 WILBAR RUBY 955N

TC ADVANTAGE AMF CAF NHF DDC
 SANDY BAR JEMINA 44K
 VERMILION YELLOWSTONE AMF CAF NHF DDF
 WILBAR RUBY 161J

REMITALL WIDELOAD 595U AMF CAF NHF OSF MAF
REMITALL W COUNTESS 10X 1550843
 REMITALL COUNTESS 588R

S A V MASTERPIECE 5289
 REMITALL NEONIA 237P AMF NHF
 L T 598 BANDO 9074 AMF CAF NHF DDF
 WILLBAR COUNTESS 82M

BW: 72 lbs.
 EPDs: BW: +2.0 P WW: +50 P YW: +84 P Milk: +18 P
 TM: +43 CE: +6.5 P MCE: +6.0 P

Another tremendous Kodiak 5R daughter that has a great balance, volume and natural eye appeal to her. Her dam 10X is beautiful in her design with a perfect udder and profile. Top Kodiak daughters don't come up for sale very often so here is a great opportunity.



Lot 94 - Remitall West Neonia 53B

94 REMITALL WEST NEONIA 53B

Female REMI 53B 1783751 February 05 2014

MYTTY IN FOCUS AMF CAF NHF DDF
CUDLOBE IN FOCUS 5S NHF DDF 1333991
 CUDLOBE ENCHANTRESS 55M

S A F FOCUS OF E R AMF CAF NHF DDF
 MYTTY COUNTESS 906
 BON VIEW NEW DESIGN 1407 AMF CAF NHF DDC
 CUDLOBE ENCHANTRESS 47H

REMITALL WEST NIGHTHAWK 904U AMF CAF NHF OSF MAF
REMITALL W NEONIA 57Z 1702352
 REMITALL NEONIA 442T

REMITALL NIGHTHAWK 794R
 HAPPYVALE NEONIA 129N CAF
 REMITALL RESISTOR 602R
 REMITALL NEONIA 791R

BW: 77 lbs.
 EPDs: BW: -0.4 P WW: +51 P YW: +95 P Milk: +24 P
 TM: +49 CE: +10.0 P MCE: +10.0 P

The In Focus 55 sire has worked tremendous here at Remitall West. He moderates birth and accelerates growth as good as any sire we have used. This fine heifer calf is no exception; she is eye appealing, wide based and possesses a wonderful muscle shape. The Neonia's have been the most dominant and productive cow family in the Remitall West program.



Lot 95 - Remitall West H Rosebud 125B

95 REMITALL WEST H ROSEBUD 125B

Female REMI 125B 1783696 March 14 2014

REMITALL TWENTY X 910T AMF CAF NHF OSF MAF
REMITALL W ROLLING STONE 101W 1539896
 REMITALL TIP TOP 509S

REMITALL PILOT 103P
 REMITALL H FANCY 40R
 SITZ TRADITION RLS 870Z
 C-JAY 11H BLACKBIRD 9P

S A V FINAL ANSWER 0035 AMF CAF NHF DDF
BROOKMORE ROSEBUD 35Y 1604008
 BROOKMORE ROSEBUD 263W

SITZ TRAVELER 8180 AMF CAF NHF DDF
 S A V EMULOUS 8145 CAF
 BROOKMORE DENSITY 111T
 BROOKMORE ROSEBUD 36P

BW: 73 lbs.
 EPDs: BW: +1.0 P WW: +42 P YW: +84 P Milk: +21 P
 TM: +42 CE: +6.0 P MCE: +7.5 P

A great profiling heifer calf with a tremendous hip and angularity to her. Super extended through her neck and front end, she is a picture of femininity. Her dam Rosebud 35Y was our selection from the 2012 Brookmore offering and she has not disappointed. 35Y is typical of the Final Answer daughters, perfectly uddered, broody, deep bodied and highly productive. A young heifer with a great pedigree and future!

Atlasta Angus

*Brian has picked two heifers from each herd sire; both heifers enter the ring at once.
The final bidder has the option to select his choice of the two heifers or he can take both at twice the money.
If the final bidder takes just one heifer then the runner up bidder
has the choice of taking the other heifer at the same money.
If he does not select the other heifer, she will go back into the Atlasta herd.*



Lot 96A - Atlasta Lady Anne 125A



Lot 97A - Atlasta 101 Gemstone 54A

96A ATLASTA LADY ANNE 125A

Female JBS 125A 1745817 January 18 2013

S A V 8180 TRAVELER 004 DMF DMF AMF CAF NHF OSF DDF
S A V NET WORTH 4200 AMF CAF NHF DDF 1309743
S A V MAY 2410

SITZ TRAVELER 8180 AMF CAF NHF DDF
BOYD FOREVER LADY 8003
S A F 598 BANDO 5175 AMF CAC DDF
S A V MAY 6269

SCA 3299 OF IDEAL 1418
SCA LADY ANN 34R 1292505
SCA LADY ANN 56G

IDEAL 1418 OF 8103 4286 AMF CAF NHF DDF
SCA 16E OF IDEAL 033 7258
LEACHMAN RIGHT TIME DMF AMF
SCA LADY ANN 12X

BW: 88 lbs.

EPDs: BW: +3.9 P+ WW: +53 P+ YW: +93 P+ Milk: +27 P
TM: +54 CE: +0.5 P MCE: +5.0 P

97A ATLASTA 101B GEMSTONE 54A

Female JBS 54A 1762822 January 08 2013

SITZ TRAVELER 8180 AMF CAF NHF DDF
S A V FINAL ANSWER 0035 AMF CAF NHF DDF 1061938
S A V EMULOUS 8145 CAF

G D A R TRAVELER 71 AMF CAF NHF DDF
SITZ EVERELDA ENTENSE 1137
BON VIEW BANDO 598 AMF CAC DDF
S A V SKY EMULOUS 2124

JDM KRUGERRAND 1'04
ATLASTA 101B MISSY 75T 1405486
ATLASTA GEMSTONE 111R

F A R KRUGERRAND 410H AMF CAF NHF DDF
JDM BLOSSOM 998
A C REMINGTON
ALSIKE ACRES GEMSTONE 4H

BW: 80 lbs.

EPDs: BW: +2.0 P+ WW: +51 P+ YW: +90 P Milk: +19 P
TM: +44 CE: +4.0 P MCE: +8.5 P

96B ATLASTA PERFECTION 107S-67A

Female JBS 67A 1746934 January 10 2013

S A V 8180 TRAVELER 004 DMF DMF AMF CAF NHF OSF DDF
S A V NET WORTH 4200 AMF CAF NHF DDF 1309743
S A V MAY 2410

SITZ TRAVELER 8180 AMF CAF NHF DDF
BOYD FOREVER LADY 8003
S A F 598 BANDO 5175 AMF CAC DDF
S A V MAY 6269

SITZ TRAVELER 8180 AMF CAF NHF DDF
BB BARBARA PERFECTION 107S 1415168
SITZ BARBARA PERFECTION 770

G D A R TRAVELER 71 AMF CAF NHF DDF
SITZ EVERELDA ENTENSE 1137
TRAVELER 124 G D A R
SITZ BARBARA PERFECTION 1018

BW: 86 lbs.

EPDs: BW: +3.1 P+ WW: +47 P+ YW: +85 P Milk: +25 P
TM: +48 CE: +5.5 P MCE: +11.0 P

97B ATLASTA MISS PINE DRIVE 84A

Female JBS 84A 1762818 January 13 2013

SITZ TRAVELER 8180 AMF CAF NHF DDF
S A V FINAL ANSWER 0035 AMF CAF NHF DDF 1061938
S A V EMULOUS 8145 CAF

G D A R TRAVELER 71 AMF CAF NHF DDF
SITZ EVERELDA ENTENSE 1137
BON VIEW BANDO 598 AMF CAC DDF
S A V SKY EMULOUS 2124

HF COMMANDER 60P
ATLASTA MISS PD 105T 1405454
BARNETT MISS WISEGUY 9P

TC FREEDOM 104 AMF CAF NHF DDF
DURALTA 14C ECHO 32E
PINE DRIVE BIG SKY AMF CAF NHF DDF
MYALTA MISS WISEGUY 9C

BW: 82 lbs.

EPDs: BW: +2.1 P+ WW: +46 P+ YW: +77 P Milk: +21 P
TM: +44 CE: +4.0 P MCE: +8.5 P

Two deep bodied, clean fronted females sired by the very popular S A V Net Worth. He consistently leaves very attractive easy fleshing females with good feet and udders. Both dams are consistent, top end matrons. 34R has an outstanding son and full brother to Annie 125A, JBS 82B selling as Lot 10 in the bull offering. Barbara Perfection 107S is a picture perfect Angus cow, a direct daughter of Sitz Traveler 8180. Powerful genetics on both the top and bottom, give both females a head start to a great future.

Both are bred A.I. to S A V Final Answer -1061938- April 11, 2014.
Both are exposed to MWC Body Builder -1659638- April 17, 2014.
JBS 67A is due mid to late January 2015.
JBS 125A is due mid January 2015.

This pair of heifers are deep bodied, moderately framed breds and sired by the heavily used S A V Final Answer. His daughters are can't miss Angus cows with excellent dispositions, easy fleshing, have top end weaning weights with excellent feet and udders. Two of my favourites, with a bright future.

Both are bred A.I. to Jindra Double Vision -1764385- April 11, 2014.
Both are exposed to MWC Body Builder -1659638- April 17, 2014.
54A is due late January 2015.
84A is due late January 2015.

Seriously Black



Lot 98A - Atlasta Barbara 187A



Lot 99A - Atlasta BB Barbara Jet 103A

98A ATLASTA BARBARA 187A

Female JBS 187A 1745672 February 13 2013

S A V FINAL ANSWER 0035 AMF CAF NHF DDF
LFE BA LEWIS 809U 1496729
SOUTHERN OX ERICA 51T

SITZ TRAVELER 8180 AMF CAF NHF DDF
S A V EMULOUS 8145 CAF
SPRUCE VIEW EILEENMERE 74N
SOUTHERN OX ERICA 66J

S A V NET WORTH 4200 AMF CAF NHF DDF
ATLASTA 14C BARBARA 48X 1573520
ATLASTA BARBARA 84N

S A V 8180 TRAVELER 004 DMF DWF AMF CAF NHF OSF DDF
S A V MAY 2410
DMM STOCKMAN 106J
MLA BARBARA 14'93

BW: 86 lbs. Adj. 205D: 756 lbs.
EPDs: BW: +3.7 35% WW: +57 24% YW: +95 12% Milk: +24 12%
TM: +53 CE: +0.0 23% MCE: +5.0 9%

99A ATLASTA BB BARBARA JET 103A

Female JBS 103A 1762827 January 15 2013

TRES MARIAS 6301 ZORZAL
WAF ZORZAL 321U AMF CAF NHF OSF 1485949
TRES MARIAS 6582 CUMELLEN 5632

TRES MARIAS 5887 HORNERO
TRES MARIAS 4850 WIND EXT
TRES MARIAS 5837 CUMELLEN
TRES MARIAS 5632 CHAPAR 5026

CONNELLY TIMELINE CAF DDF
ATLASTA BB BARB JET 050T 1411491
BB BARBARAMERE JET 20P

CONNELLY DATELINE DDF
ENCHANTS FORTUNE CONANGA 6127
SITZ ALLIANCE 7002
SITZ BARBARAMERE JET 3053

BW: 85 lbs.
EPDs: BW: +2.3 P+ WW: +39 P+ YW: +60 P+ Milk: +6 P
TM: +25 CE: +5.5 P MCE: +7.0 P

98B ATLASTA ERICA 87A

Female JBS 87A 1745662 January 13 2013

S A V FINAL ANSWER 0035 AMF CAF NHF DDF
LFE BA LEWIS 809U 1496729
SOUTHERN OX ERICA 51T

SITZ TRAVELER 8180 AMF CAF NHF DDF
S A V EMULOUS 8145 CAF
SPRUCE VIEW EILEENMERE 74N
SOUTHERN OX ERICA 66J

SVF SIEBRINGS FOREVER RUSS AMF CAF NHF DDF
ATLASTA 34H ERICA RUSS 60X 1589932
ATLASTA ERICA 34H

GDAR SVF RUSS 184B
GDAR SVF FOREVER LADY 214D
MACC INDIAN NATION 66F
MLA ELLEN ERICA 34'95

BW: 80 lbs.
EPDs: BW: +2.7 P+ WW: +44 P+ YW: +79 P Milk: +22 P
TM: +45 CE: +1.5 P MCE: +4.0 P

99B ATLASTA ANNIE 35A

Female JBS 35A 1745768 January 02 2013

TRES MARIAS 6301 ZORZAL
WAF ZORZAL 321U AMF CAF NHF OSF 1485949
TRES MARIAS 6582 CUMELLEN 5632

TRES MARIAS 5887 HORNERO
TRES MARIAS 4850 WIND EXT
TRES MARIAS 5837 CUMELLEN
TRES MARIAS 5632 CHAPAR 5026

PEAK DOT FAME 414M
BB ANNIE 13R 1297919
J L S ANNIE 893

S A R FAME 2089
DUCHESS OF PEAK DOT 642K
Q A S TRAVELER 23-4 AMF CAF NHF DDF
J L S ANNIE 1301

BW: 92 lbs.
EPDs: BW: +5.0 P+ WW: +39 P+ YW: +54 P Milk: +9 P
TM: +26 CE: +3.5 P MCE: +6.0 P

Both these bred are smooth shouldered, have some extra length and depth, square hips and good feet with lots of hair. The Lewis Final Answer progeny all have great dispositions, are easy fleshing with top end weaning weights. Both dams are from the very best producing cow families at Atlasta. I can't say enough about both of these heifers, they are going to be top producers with unlimited potential.

Both exposed to Brookmore Bismarck 19A -1764385- March 29, 2014.
87A is due late January 2015.
187A is due mid January 2015.

A pair of clean fronted, fancy bred with lots of hair. Zorzal has sired us very attractive females with lots of body, good hips and feet. The dams are powerful, consistent producers with excellent feet and udders. Annie 35A's dam gave us the top selling bull to Remington Cattle and the top selling bred heifer the same year. Barbara Jet 103A's dam, 050T has a powerful bull in the sale, Upshot 81B Lot 5. Zorzal is an exciting sire in our breed and has done a superb job at Atlasta. I'm excited about both these young cows future!

Both are bred A.I. to S A V Final Answer -1061938-.
Exposed April 10, 2014 to MWC Body Builder 30Y -1659638-.
JBS 35A is due late January 2015.
JBS 103A is due late January 2015.

Atlasta Angus



Lot 10A - Atlasta Dyna Lady 74A



Lot 101A - Atlasta Erica 102A

100A ATLASTA DYNA LADY 74A

Female JBS 74A 1745745 January 11 2013

JUSTAMERE 1118 CASH 665P
REMITALL SUPEREVENT 532S 1338191
KBJ ANNIE 829N

EXAR BIG TIMBER 1118
REMITALL KEEPSAKE 143L
LLB TRAVELER 297K
KBJ ANNIE 438L

NOBLE ACRES ELMO 1R
ATLASTA DYNA LADY 15U 1473749
ATLASTA DYNA LADY 69N

NOBLE ACRES JUMP START 50N
NOBLE ACRES FLORA 1H
COLDSTREAM SKUKUM 52K
ATLASTA DYNA E 14H

BW: 85 lbs.

EPDs: BW: +3.8 P+ WW: +50 P+ YW: +83 P Milk: +19 P
TM: +44 CE: -2.0 P MCE: +4.5 P

100B ATLASTA BJ BLACKBIRD 25A

Female JBS 25A 1745830 January 01 2013

JUSTAMERE 1118 CASH 665P
REMITALL SUPEREVENT 532S 1338191
KBJ ANNIE 829N

EXAR BIG TIMBER 1118
REMITALL KEEPSAKE 143L
LLB TRAVELER 297K
KBJ ANNIE 438L

REMITALL MOONSHINE 113M
ATLASTA BLACKBIRD 225U 1473663
BJ BLACKBIRD 8D

VERMILION DATELINE 7078 AMF CAF NHF DDF
LLB COUNTESS 635H
PROSPERITY ACCLAIM 158
BJ BLACKBIRD 1B

BW: 90 lbs.

EPDs: BW: +5.4 P+ WW: +49 P+ YW: +80 P Milk: +15 P
TM: +39 CE: -2.5 P MCE: +4.0 P

The Remitall Super Event daughters are clean fronted, long sided with some extra depth, good footed with tight udders. Good looking Angus mamas with nice dispositions and top end production. I can't say enough about the Super Event bloodlines and productions, giving these two breds a head start to a solid future.

Both exposed to Brookmore Bismarck 19A -1753067- March 29, 2014.
25A is due early February 2015.
74A is due late January 2015.

101A ATLASTA ERICA 102A

Female JBS 102A 1745779 January 14 2013

SVF SIEBRINGS FOREVER RUSS AMF CAF NHF DDF
ATLASTA FOREVER RUSS 40Y 1644733
B.B.A.R. LADY MONOGRAM 167'96

GDAR SVF RUSS 184B
GDAR SVF FOREVER LADY 214D
LEACHMAN RIGHT TIME DMF AMF
LADY MONOGAM 67/94

G T MAXIMUM AMF CAF NHF DDF
ATLASTA ERICA 25P 1236638
ATLASTA ERICA 50H

SCOTCH CAP AMF CAF NHF DDF
GT MISS TRAVELER 58
ALSIKE ACRES EX NITRO BLAST 3F
MLA ERICA 7'90

BW: 92 lbs.

EPDs: BW: +6.3 P+ WW: +56 P+ YW: +98 P+ Milk: +11 P
TM: +33 CE: -2.0 P MCE: +1.0 P

101B ATLASTA EMMA E 58A

Female JBS 58A 1745788 January 09 2013

SVF SIEBRINGS FOREVER RUSS AMF CAF NHF DDF
ATLASTA FOREVER RUSS 40Y 1644733
B.B.A.R. LADY MONOGRAM 167'96

GDAR SVF RUSS 184B
GDAR SVF FOREVER LADY 214D
LEACHMAN RIGHT TIME DMF AMF
LADY MONOGAM 67/94

SITZ PCAR EMULATION EXT 8668
BB EMMA E 14P 1240727
SITZ EMMA E 2873

N BAR EMULATION EXT AMF CAF NHF DDF
SITZ ELSLOW 546
LEACHMAN TWOPLY 0506
SITZ EMMA E 4508

BW: 94 lbs.

EPDs: BW: +6.3 P+ WW: +48 P+ YW: +79 P Milk: +18 P
TM: +41 CE: -2.0 P MCE: +3.5 P

These attractive females are sired by the top selling bull, Atlasta Forever Russ 40Y, co-owned with Dale Bushfield. Both are clean fronted with some extra length and depth. Check the sires in both pedigrees, Leachman Right Time, GT Maximum, EXT, Leachman Two Ply and GDAR Russ, all breed legends in producing top end females.

Both exposed to Brookmore Bismarck 19A -1753067- March 29, 2014.
58A is due mid to late January 2015.
102A is due mid to late January 2015.

Seriously Black



Lot 102A - Atlasta Emma E 154A



Lot 103A - Atlasta Blackcap 163A

102A ATLASTA EMMA E 154A

Female JBS 154A 1745772 January 25 2013

LEACHMAN RIGHT TIME DMF AMF
REMINGTON RIGHT TIME 124R 1291957
 CRESCENT CREEK BLACKCAP 84E

N BAR EMULATION EXT AMF CAF NHF DDF
 LEACHMAN ERICA 0025
 RITO 8094 PRAIRIELANE 2060 AMF
 CRESCENT CREEK BLACKCAP 112A

PEAK DOT FAME 414M
BB EMMA E 15R 1297924
 SITZ EMMA E 2873

S A R FAME 2089
 DUCHESS OF PEAK DOT 642K
 LEACHMAN TWOPLY 0506
 SITZ EMMA E 4508

BW: 85 lbs. Adj. 205D: 656 lbs.
 EPDs: BW: +4.7 36% WW: +39 25% YW: +63 12% Milk: +25 15%
 TM: +45 CE: -5.0 20% MCE: +2.0 10%

103A ATLASTA BLACKCAP 163A

Female JBS 163A 1745764 February 01 2013

S A V NET WORTH 4200 AMF CAF NHF DDF
BROOKMORE NETWORTH 112U 1441286
 BROOKMORE RUBY 20K

S A V 8180 TRAVELER 004 DMF DWF AMF CAF NHF OSF DDF
 S A V MAY 2410
 ALBERDA TRAVELER 416 AMF CAF NHF DDF
 BROOKMORE RUBY 77H

ATLASTA BATTLE CRY RAMMER 45L
ATLASTA BLACKCAP 58N 1168145
 MLA BLACKCAP 20'91

O G L BATTLE CRY 427 128 DDF
 MLA ELLEN ERICA 4'86
 ARGWEN ROCKY 15Y
 MLA BLACKCAP 7'86

BW: 92 lbs. Adj. 205D: 628 lbs.
 EPDs: BW: +5.6 35% WW: +34 23% YW: +69 9% Milk: +15 13%
 TM: +32 CE: -6.0 19% MCE: -1.0 8%

102B ATLASTA WENDY 188A

Female JBS 188A 1745775 February 14 2013

LEACHMAN RIGHT TIME DMF AMF
REMINGTON RIGHT TIME 124R 1291957
 CRESCENT CREEK BLACKCAP 84E

N BAR EMULATION EXT AMF CAF NHF DDF
 LEACHMAN ERICA 0025
 RITO 8094 PRAIRIELANE 2060 AMF
 CRESCENT CREEK BLACKCAP 112A

SVF SIEBRINGS FOREVER RUSS AMF CAF NHF DDF
ATLASTA WENDY 22R 1276646
 ATLASTA WENDY 37H

GDAR SVF RUSS 184B
 GDAR SVF FOREVER LADY 214D
 MACC INDIAN NATION 66F
 MLA WENDY 3'95

BW: 85 lbs. Adj. 205D: 653 lbs.
 EPDs: BW: +2.9 36% WW: +36 26% YW: +67 11% Milk: +22 16%
 TM: +40 CE: -2.0 21% MCE: +1.0 11%

103B ATLASTA BARBARA 90A

Female JBS 90A 1745798 January 13 2013

S A V NET WORTH 4200 AMF CAF NHF DDF
BROOKMORE NETWORTH 112U 1441286
 BROOKMORE RUBY 20K

S A V 8180 TRAVELER 004 DMF DWF AMF CAF NHF OSF DDF
 S A V MAY 2410
 ALBERDA TRAVELER 416 AMF CAF NHF DDF
 BROOKMORE RUBY 77H

DMM STOCKMAN 106J
ATLASTA BARBARA 84N 1153320
 MLA BARBARA 14'93

TC STOCKMAN 365 DDF
 DMM MISS ESSENCE 22B
 GET-A-LONG ALAMO 13Z
 MLA BARBARA 34'88

BW: 94 lbs.
 EPDs: BW: +6.4 P+ WW: +40 P+ YW: +77 P Milk: +15 P
 TM: +33 CE: -1.5 P MCE: +2.0 P

Remington Right Time 124R consistently leaves easy fleshing moderately framed offspring combined with some extra length and depth. Both cow families are rock solid producers. Emma E 154A's grandma was twenty-three years old and still going strong when we lost her, a Pathfinder cow in her own right. The sire of these heifers, gives you the total package in Angus cows. Two fancy heifers with rock solid pedigrees on the top and bottom to back them up.

154A was exposed HF Consensus March 28, 2014 to April 6, 2014 and then exposed to Brookmore Bismarck 19A -1753067- April 7, 2014. 188A was bred A.I. to LFE Lewis 809U March 28, 2014 and then exposed to Brookmore Bismarck 19A -1753067 April 7, 2014. 154A is due early January 2015. 188A is due mid January 2015.

The sire of these heifers is a son of S A V Net Worth, leaves easy fleshing, long sided females with lots of hair, good feet and udders. They are both backed by generations of top end producing cow families. Both dams bring top end calves year after year. You won't go wrong with either heifer.

Both exposed to Zaniabar Heads Up Lad 38A -1759977- March 29, 2014 to May 1, 2014. Exposed May 9, 2014 to MWC Body Builder 30Y -1659638-. 90A is due late January 2015. 163A is due late January 2015.

Atlasta Angus



Lot 104A - Atlasta Miss NW 171A



Lot 105A - Atlasta Patricia 214A

104A ATLASTA MISS NW 171A

Female JBS 171A 1745842 February 04 2013

BROOKMORE NETWORK 112U
ATLASTA RUSS 120X 1579639
ATLASTA BLACKCAP 114M

S A V NET WORTH 4200 AMF CAF NHF DDF
BROOKMORE RUBY 20K
SVF SIEBRINGS FOREVER RUSS AMF CAF NHF DDF
MLA BLACKCAP 6'93

BB ALLIANCE 40S
ATLASTA MISS NW 28W 1528126
BYMAN'S MISS GOLDETTE 3T

SITZ ALLIANCE 6595 DMF AMF CAF NHF DDF
WHS ISABELLA 3J
S A V NET WORTH 4200 AMF CAF NHF DDF
BYMAN'S MISS FULLBACK 3P

BW: 84 lbs. Adj. 205D: 646 lbs.
EPDs: BW: +4.7 31% WW: +48 19% YW: +86 6% Milk: +18 9%
TM: +42 CE: -2.0 17% MCE: +3.0 6%

105A ATLASTA PATRICIA 214A

Female JBS 214A 1745766 March 19 2013

G A R GRID MAKER AMF CAF NHF DDF
LVA 17M ASCENT 4X 1543665
NOBLE ACRES KARAMA 17M

G D A R TRAVELER 044 AMF CAF NHF DDF
G A R PRECISION 2536 AMF NHF
NOBLE LINE RAIN BOY 1K
WAVY KARAMA 17K

HF FORMATION 13K
ATLASTA PATRICIA 52N 1153330
MLA PATRICIA 29'94

CONNELLY KINCAID
DURALTA 14C ECHO 32E
MLA CRUSADER 2Z
MLA PATRICIA 24'86

BW: 93 lbs. Adj. 205D: 751 lbs.
EPDs: BW: +4.6 34% WW: +45 22% YW: +72 9% Milk: +17 12%
TM: +40 CE: -7.0 18% MCE: +1.0 8%

104B ATLASTA RT PATRICIA 131A

Female JBS 131A 1745841 January 19 2013

BROOKMORE NETWORK 112U
ATLASTA RUSS 120X 1579639
ATLASTA BLACKCAP 114M

S A V NET WORTH 4200 AMF CAF NHF DDF
BROOKMORE RUBY 20K
SVF SIEBRINGS FOREVER RUSS AMF CAF NHF DDF
MLA BLACKCAP 6'93

REMINGTON RIGHT TIME 124R
ATLASTA 49R MISS RIGHT TIME 14 1528055
ATLASTA PATRICIA 49R

LEACHMAN RIGHT TIME DMF AMF
CRESCENT CREEK BLACKCAP 84E
HF FORMATION 13K
ATLASTA PATRICIA 220M

BW: 88 lbs.
EPDs: BW: +4.3 P+ WW: +43 P+ YW: +80 P+ Milk: +21 P
TM: +42 CE: -3.5 P MCE: +0.0 P

105B ATLASTA TINA 174A

Female JBS 174A 1745820 February 06 2013

G A R GRID MAKER AMF CAF NHF DDF
LVA 17M ASCENT 4X 1543665
NOBLE ACRES KARAMA 17M

G D A R TRAVELER 044 AMF CAF NHF DDF
G A R PRECISION 2536 AMF NHF
NOBLE LINE RAIN BOY 1K
WAVY KARAMA 17K

G T MAXIMUM AMF CAF NHF DDF
ATLASTA TINA 24S 1342027
ATLASTA DATELINE TINA 3J

SCOTCH CAP AMF CAF NHF DDF
GT MISS TRAVELER 58
CONNELLY DATELINE DDF
ATLASTA TINA 14G

BW: 86 lbs. Adj. 205D: 632 lbs.
EPDs: BW: +3.4 34% WW: +41 23% YW: +75 12% Milk: +15 13%
TM: +36 CE: +1.0 20% MCE: +6.0 9%

Both these young cows are smooth fronted with some extra capacity and length. Their sire's progeny are easy fleshing combined with lots of growth. Both dams are rock solid producers with good feet and udders. Take your pick, you won't be wrong with either.

Both exposed to Brookmore Bismarck 19A -1753067- March 29, 2014.
131A is due mid January 2015.
171A is due mid February 2015.

Our Gridmaker son sires awesome females with good udders and feet. Both of these bred's dams, Patricia 52N and Tina 24A sires's GT Maximum and HF Formation 13K have gave us top producing both bulls and heifers. Patricia 214A and Tina 174A go back over 30 years in both cow families. Two well bred consistent producing younger heifers backed by two of my favourite cow families.

Both exposed to Zaniabar Heads Up Lad 38A -1759977- March 29, 2014 to May 1, 2014.
Exposed May 9, 2014 to MWC Body Builder 30Y -1659638-.
174A is due mid January 2015.
214A due in early February 2015.

Seriously Black



Lot 106A - Atlasta Monogram FR 217A



Lot 107A - Atlasta Wendy 79A

106A ATLASTA MONOGRAM FR 217A

Female JBS 217A 1745848 March 22 2013

ALBERDA TRAVELER 416 AMF CAF NHF DDF
ROYAL TRAVELER DRCC 6068S 1353251
RALLY KATINKA 229B

D H D TRAVELER 6807 AMF NHF
ALBERDA QUEEN KIMBERLY 222
N BAR EMULATION EXT AMF CAF NHF DDF
HARMONY HILL KATINKA 229

SVF SIEBRINGS FOREVER RUSS AMF CAF NHF DDF
ATLASTA F R MONOGRAM 15W 1526668
B.B.A.R. LADY MONOGRAM 16796

GDAR SVF RUSS 184B
GDAR SVF FOREVER LADY 214D
LEACHMAN RIGHT TIME DMF AMF
LADY MONOGAM 67/94

BW: 88 lbs. Adj. 205D: 654 lbs.
EPDs: BW: +4.2 34% WW: +4.2 24% YW: +7.7 13% Milk: +19 14%
TM: +4.0 CE: +1.0 20% MCE: +4.0 10%

107A ATLASTA WENDY 79A

Female JBS 79A 1745746 January 12 2013

S A V 004 PREDOMINANT 4438 AMF CAF NHF DDF
ATLASTA PREDOMINANT 31W 1527926
ATLASTA WENDY 35K

S A V 8180 TRAVELER 004 DMF DWF AMF CAF NHF OSF DDF
S A V EMBLYNETTE 1182
ALBERDA TRAVELER 416 AMF CAF NHF DDF
ATLASTA WENDY 37H

B/R NEW FRONTIER 095 AMF CAF NHF DDF
ATLASTA WENDY 25U 1473661
MLA WENDY 1'94

B/R NEW DESIGN 036 AMF CAF NHF DDC
WHITE FENCE PRIDE H1
G D A R WHAM 021 AMF CAF NHF DDF
MLA WENDY 20'87

BW: 86 lbs.
EPDs: BW: +3.0 P+ WW: +3.6 P+ YW: +6.3 P Milk: +20 P
TM: +3.8 CE: +4.0 P MCE: +6.0 P

106B ATLASTA BB BLACKCAP 175A

Female JBS 175A 1746929 February 06 2013

ALBERDA TRAVELER 416 AMF CAF NHF DDF
ROYAL TRAVELER DRCC 6068S 1353251
RALLY KATINKA 229B

D H D TRAVELER 6807 AMF NHF
ALBERDA QUEEN KIMBERLY 222
N BAR EMULATION EXT AMF CAF NHF DDF
HARMONY HILL KATINKA 229

BON VIEW NEW DESIGN 878 AMF CAF NHF DDF
ATLASTA BB BLACKCAP 012T 1411485
BB BLACKCAP 15P

B/R NEW DESIGN 036 AMF CAF NHF DDC
BON VIEW GAMMER 85 CAC
SITZ TRADITION RLS 8702
SITZ BLACKCAP 2233

BW: 82 lbs. Adj. 205D: 616 lbs.
EPDs: BW: +1.2 35% WW: +3.8 25% YW: +6.9 13% Milk: +22 14%
TM: +4.1 CE: +6.0 21% MCE: +8.0 11%

107B ATLASTA PEARL 24A

Female JBS 24A 1745829 January 01 2013

S A V 004 PREDOMINANT 4438 AMF CAF NHF DDF
ATLASTA PREDOMINANT 31W 1527926
ATLASTA WENDY 35K

S A V 8180 TRAVELER 004 DMF DWF AMF CAF NHF OSF DDF
S A V EMBLYNETTE 1182
ALBERDA TRAVELER 416 AMF CAF NHF DDF
ATLASTA WENDY 37H

REMITALL SUPEREVENT 532S
ATLASTA PEARL 220U 1473696
ATLASTA PEARL 67K

JUSTAMERE 1118 CASH 665P
KBJ ANNIE 829N
ALSKE ACRES PRO STAR 2G
ATLASTA PEARL 10G

BW: 85 lbs.
EPDs: BW: +3.9 P+ WW: +4.6 P+ YW: +7.9 P Milk: +18 P
TM: +4.2 CE: -0.5 P MCE: +3.5 P

Two breed legends, Traveler 6807 and N Bar Emulation EXT are in the direct pedigree of this pair's sires genetics. Both are well known in the Angus breed for producing top end females. These feminine, fancy heifers have both picture perfect mama cows with trait leaders, New Design 878 and Leachman Right Time in their pedigree. Two well bred females that will become front pasture cows.

Both exposed to Zaniabar Heads Up Lad 38A -1759977- March 29, 2014 to May 1, 2014.
Exposed May 9, 2014 to MWC Body Builder 30Y -1659638-.
217A is due early March 2015.
175A is due mid March 2015.

These heifers' sire, Atlasta Predominant 31W is co-owned with KBJ Angus, sires thick, stout, low birth weight bulls and moderate framed attractive females with lots of depth and volume and good feet and udders. Two sons of Atlasta Predominant, 31W - 51B (Lot 26) and 12B (Lot 25) are headliners in the sale. Again, both heifers are backed by generations of top end producing cow families. Unlimited potential here!

Both are exposed to Brookmore Bismarck 19A -1753067-.
24A is due early January 2015.
79A is due late January 2015.

Atlasta Angus



Lot 108A - Atlasta Annie K-41A

108A ATLASTA ANNIE K-41A

Female JBS 41A 1762802 January 05 2013

CONNEALY DATELINE DDF
ATLASTA CD DATELINE 24X 1582928
BB BARBARA PERFECTION 12N

D H D TRAVELER 6807 AMF NHF
EILA EILA OF CONANGA AMF DDF
SITZ TRAVELER 8180 AMF CAF NHF DDF
SITZ BARBARA PERFECTION 770

ROYAL TRAVELER DRCC 6068S
ATLASTA ANNIE K 132Y 1648874
ATLASTA BB ANNIE K 031T CAF

ALBERDA TRAVELER 416 AMF CAF NHF DDF
RALLY KATINKA 229B
BOYD ON TARGET 1083 AMF CAC NHF DDF
DOUBLE AA ANNIE K 264'01

BW: 80 lbs.
EPDs: BW: +2.1 P+ WW: +41 P+ YW: +73 P Milk: +15 P
TM: +35 CE: +5.0 P MCE: +8.0 P

108B ATLASTA PRINCESS 63A

Female JBS 63A 1762804 January 09 2013

CONNEALY DATELINE DDF
ATLASTA CD DATELINE 24X 1582928
BB BARBARA PERFECTION 12N

D H D TRAVELER 6807 AMF NHF
EILA EILA OF CONANGA AMF DDF
SITZ TRAVELER 8180 AMF CAF NHF DDF
SITZ BARBARA PERFECTION 770

BB ATLASTA FOCUS 46S
ATLASTA PRINCESS 217Y 1620560
ATLASTA PRINCESS 157J

S A F FOCUS OF E R AMF CAF NHF DDF
LUKENS 6807 KEM 3956
MACC INDIAN NATION 66F
ATLASTA SHEBA 46G

BW: 74 lbs.
EPDs: BW: +1.3 P+ WW: +40 P+ YW: +71 P Milk: +19 P
TM: +40 CE: +4.0 P MCE: +8.0 P

Smooth front ends and some extra depth and volume describe these attractive heifers. Calving ease and performance are bred into the heifers whose dams have strong maternal genetics, both top and bottom in their pedigrees. Both dams are picture perfect young Angus cows with good feet and udders.

Both exposed to Zaniabar Heads Up Lad 38A -1759977- March 29, 2014 to May 1, 2014.

Exposed May 9, 2014 to MWC Body Builder 30Y -1659638-.
41A is due late January 2015.
63A is due mid January 2015.

Mystery Lot

Pick of the 2015 Atlasta Heifer Calves

Every one born available
Selection must be made
by August 1/15

A special thank you to Dale Bushfield for his purchase of the pick of the 2014 heifer calves.

The heifer from the 2013 pick went to French River Cattle Co. The 2012 heifer was selected by Dyce and David Bolduc and the 2011 heifer went to Jack and Barb Hart.

A big thank you all these purchasers and to the runner up bidders!



Seriously Black

Atlasta Service Sires



Brookmore Bismarck 19A

Ref BROOKMORE BISMARCK 19A

Male JVJ 19A 1753067 January 11 2013

G A R GRID MAKER AMF CAF NHF DDF
S A V BISMARCK 5682 AMF CAF NHF DDF 1369591
S A V ABIGALE 0451

S A V PIONEER 7301 AMF CAF NHF DDF
BROOKMORE LENLOCK 53Y 1603721
BROOKMORE LENLOCK 93R

BW: 74 lbs. Adj. 205D: 735 lbs. Adj. 365D: 1403 lbs.
EPDs: BW: +1.9 37% WW: +61 28% YW: +103 29% Milk: +24 21%
TM: +55 CE: +7.0 29% MCE: +10.0 18%

Co-owned with Henderson Cattle Co.



MWC Body Builder 30Y

Ref MWC BODY BUILDER 30Y

Male MWC 30Y 1659638 ET September 09 2011

DCC 002 OUTLOOK 472 AMF NHF
DUFF BODY BUILDER 763 1654973
O C C LADY BLACKCAP 753L

H A IMAGE MAKER 0415 AMF CAF NHF DDF
MWC ROSEBUD 71T 1489048
CRESCENT CREEK ROSEBUD 115F

BW: 84 lbs.

Co-owned with KBJ.

DCC NEW LOOK 101
DCC MERLE 002
O C C HERCULES 941H AMF
O C C LADY BLACKCAP 822H

HERO 6267 OF R R 2418
H A RITO BLACKCAP 9038
RITO 8094 PRAIRIELANE 2060 AMF
CRESCENT CREEK ROSEBUD 4C



Remington Heads Up 25S - Sire of Zaniabar Heads Up Lad 38A

Ref ZANIABAR HEADS UP LAD 38A

Male ZLZ 38A 1759977 March 12 2013

SUMMIT ANGUS HEADS UP 17P
REMINGTON HEADS UP 25S 1315594
REMINGTON LADY LAWN 56P

ZANIABAR GIANT JOE 47K
ZANIABAR BARBARA ROSE 42T-07 1406572
ZANIABAR BARBARA ROSE 90N

BW: 82 lbs. Adj. 205D: 478 lbs.
EPDs: BW: +3.1 32% WW: +23 20% YW: +36 11% Milk: +8 8%
TM: +20 CE: -1.0 17% MCE: +1.0 5%

ANGUS ACRES HEADS UP 188L
SUMMIT ANGUS ELINE 56L
BELMORAL EXPIDITER 8'80
ANGUS ACRES LADY LAWN 15B

BRIMAR GIANT 51G
BLACKTOF PURE PRIDE 32G
HF NO SURRENDER 37J
RONAN BARBARA ROSE 45F



HF Consensus 235Y

Ref HF CONSENSUS 235Y

Male HAMI 235Y 1627577 February 01 2011

CONNELLY CONSENSUS DDF
CONNELLY CONSENSUS 7229 AMF CAF NHF DDF 1593730
BLUE LILLY OF CONANGA 16 CAF

HF TIGER 5T AMF CAF NHF OSF DDF
HF TIBBIE 1W 1511177
2HR TIBBIE 33P

BW: 84 lbs. Adj. 205D: 750 lbs. Adj. 365D: 1280 lbs.
EPDs: BW: +5.5 55% WW: +63 42% YW: +110 28% Milk: +30 20%
TM: +62 CE: -3.0 42% MCE: +3.0 17%

KMK ALLIANCE 6595 187 AMF CAF NHF DDF
BLINDA OF CONANGA 004
WOODHILL ADMIRAL 77K AMF CAF NHF DDF
BLUE CASH OF CONANGA 6020 CAF

HF KODIAK 5R AMF CAF NHF MAF DDF
HF ECHO 84R
S A F FOCUS OF E R AMF CAF NHF DDF
HF TIBBIE 100M

Terms & Conditions

CATTLE INSPECTION: All carry permanent identity tags, corresponding to Sale Lot Numbers. All shall be available for inspection prior to sale.

ALL CATTLE ARE SOLD: Subject to such tests as required for export under regulations of the Health of Animals Branch, Department of Agriculture for Canada - those corresponding to Bureau of Animal Industry requirements.

BREEDING GUARANTEE: All cattle are sound and sold with a responsible breeder guarantee of satisfaction. In the event of any unlikely dispute, the regular terms and conditions, standard with the Canadian Aberdeen Angus Association shall apply.

HOLDING AND SHIPMENTS: Approximately one week is required for export transfers and other documents to be processed. Export animals will be held at no charge and under excellent care. Joint export shipping arrangements to attain minimum shipping cost will gladly be made by the sale management if instructions to that effect are provided to clerk of the sale when settlement is made.

MAIL BIDS: May be entrusted in complete confidence to any of the Sale Staff listed or to Douglas J. Henderson & Associates Ltd.

INSURANCE: Ownership risk to purchaser commences when the Auctioneer's hammer falls. Livestock coverage will be available at the clerk's desk from the appointed representatives on sale day, also from the sale management at any time.

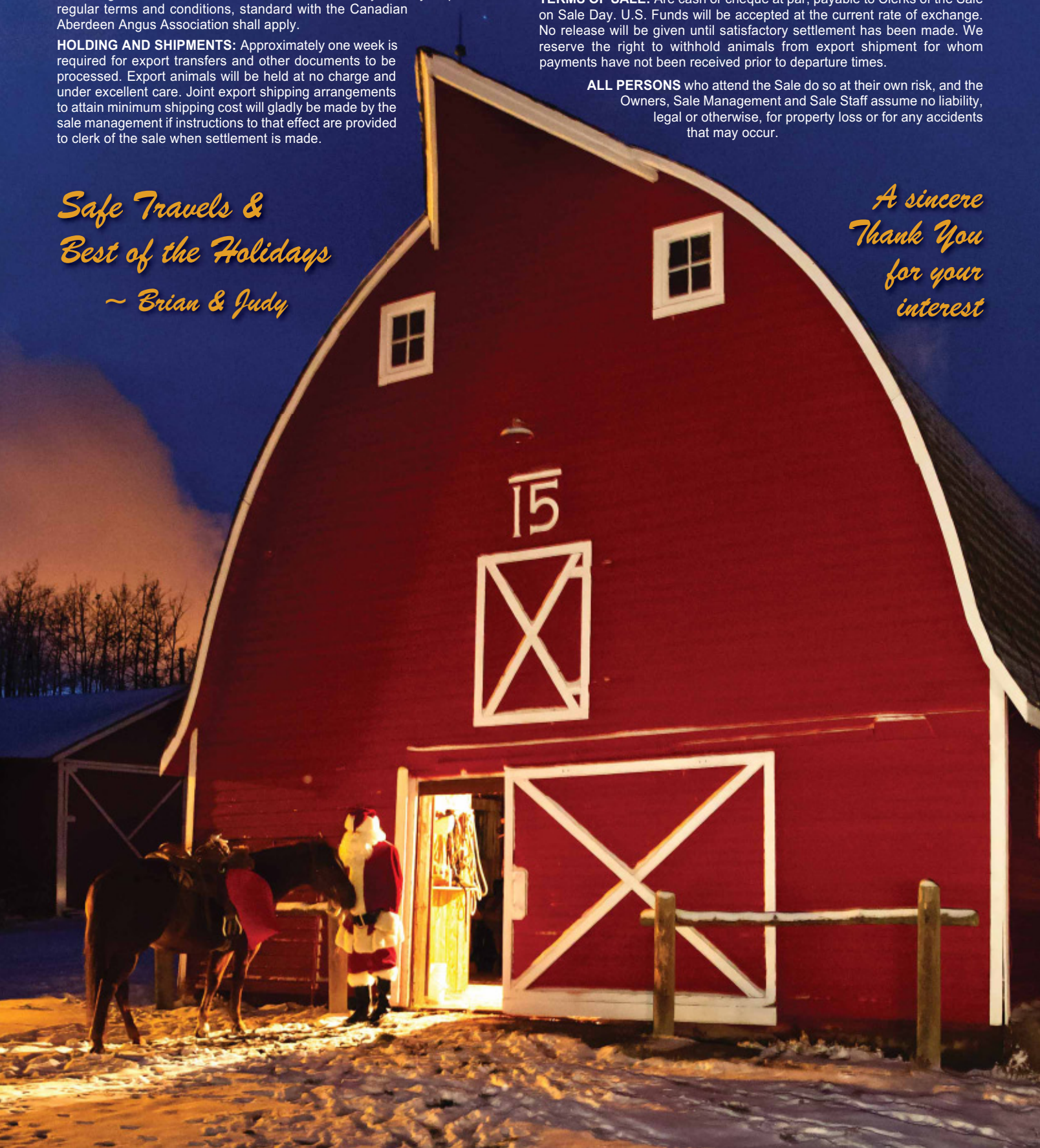
TERMS OF SALE: Are cash or cheque at par, payable to Clerks of the Sale on Sale Day. U.S. Funds will be accepted at the current rate of exchange. No release will be given until satisfactory settlement has been made. We reserve the right to withhold animals from export shipment for whom payments have not been received prior to departure times.

ALL PERSONS who attend the Sale do so at their own risk, and the Owners, Sale Management and Sale Staff assume no liability, legal or otherwise, for property loss or for any accidents that may occur.

*Safe Travels &
Best of the Holidays*

~ Brian & Judy

*A sincere
Thank You
for your
interest*



DjH Douglas J. Henderson
& Associates Ltd.

P.O. Box 5900, Lacombe, Alberta T4L 1X4



RETURN POSTAGE GUARANTEED
PORT DE RETOUR GARANTI

Atlasta Angus

9th Annual Bull Sale

& Seriously Black Select Female Sale



Saturday
December 13 2014
At the Farm, Sylvan Lake, Alberta