

Atlasta Angus

4th
Annual Bull Sale

**&
Seriously
Black
Select
Female Sale**



**Saturday
December 12, 2009**

At the Farm, Sylvan Lake, Alberta

Atlasta Angus



Schedule of Events

FRIDAY, DECEMBER 11

Afternoon - Cattle Viewing
Social Evening to Follow

SATURDAY, DECEMBER 12

Join us for a special pre-Christmas Lunch

1 PM

Seriously Black Select Female Sale

immediately followed by the

**4th Annual
ATLASTA ANGUS BULL SALE**



Atlasta Angus

4th Annual Bull Sale

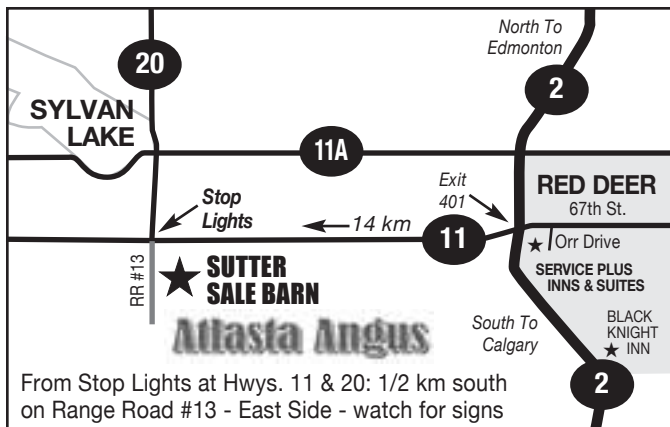
91 Angus
Bulls & 42
Females Sell

SATURDAY, DECEMBER 12, 2009

At the Farm, Sylvan Lake, Alberta

Seriously Black Select Female Sale
STARTS AT 1 PM to be followed immediately by the BULL SALE

DIRECTIONS TO ATLASTA ANGUS



PHOTOS BY
GRANT ROLSTON

HOTEL HEADQUARTERS SERVICE PLUS INNS & SUITES

6853 - 66 St., Red Deer, AB T4P 3T5
(Next to Tim Horton's)

Phone: (403) 342-4445 1-888-875-4667
www.serviceplusinns.com

Be sure to ask for the Atlasta/Seriously Black Room Rate

Alternate Recommended Accommodation

BLACK KNIGHT INN
(403) 343-6666

Atlasta Angus

**BRIAN & JUDY SUTTER
& FAMILY**

Sylvan Lake, Alberta

Ph/Fax: 403-887-4147 Cel: 403-505-7073

TERMS ON YEARLING BULLS
50% Down - 50% Feb. 15
See details page 2

AUCTIONEER:

Don Raffan 250-546-9420; cell: 250-558-6789

SALE STAFF:

Mark Stock 403-357-8104 - Ringman
Ryan Dorran 403-507-6483 - Ringman & Buyers Rep.
Peter Raffan 250-260-0758

BUYERS REPRESENTATIVES:

Danny Daines Cel: 403-391-0580
Work: 403-227-3166 Home: 403-227-1075
Don Pasqual Home: 403-880-0123
Kyle Daines 403-598-2360
P&H Bull Marketing - Duane Parsonage
Cel: 403-304-0661 Home: 403-227-2348
Peter Raffan Cel: 250-260-0758 Office: 250-546-9420
Don Raffan Cel: 250-558-6789 Office: 250-546-9420
Maury Grant Cel: 250-558-9099 Home: 250-503-5535

SALE DAY PHONES

Doug: 403-350-8541
Brian: 403-505-7073

SALE MANAGED BY

DjH **Douglas J. Henderson
& Associates Ltd.**

Doug & Linda Henderson

P.O. Box 5900, Lacombe, Alberta T4L 1X4
Phone: (403) 782-3888 Fax: (403) 782-3849 Cel: (403) 350-8541
email: djhenderson@platinum.ca website: www.hendersoncattle.com

Atlasta Angus

BRIAN & JUDY SUTTER & FAMILY
RR 1, Red Deer, AB T4N 5E1
Ph/Fax: 403-887-4147 Cel: 403-505-7073



2009 Family Photo

Welcome from Atlasta!

It is my pleasure to welcome you to the 4th Annual Atlasta Bull Sale and Seriously Black Select Female Sale.

The past year has been an interesting one, to say the least. Between the cattle markets, hail and drought, our industry has certainly been put to the test across our country, however, these "little" distractions that have been presented to us only make a person bear down a little more, be creative, pay strict attention to detail, make sure your product is the very best it can be and make damn sure when you think your customers are serviced as good as possible, try to be even better!

I know one thing, from traveling the country and listening to the heart and soul of our industry, top quality breeding cattle are required more than ever before I guess this feeling falls into place with exactly how I feel.

My goal is simple, if we're the same as we were yesterday; we're already behind today. Our customers require a bull that can survive and breed in tough country and climate and a cow that can bring in a top weaning weight calf with upper end performance and top cutability.

From our 250 head cowherd, I think our sale will give you these necessities and values. 70 yearling bulls born between January 1 and February 15 are offered along with 22 coming 2 yr olds. 36 of these yearlings weaned off at over 900 lbs. We've culled hard, feet, scrotal and what a bull should look like are important.

We have also selected 25 very top end bred heifers in which six lots will be sold at your choice. Jack & Barb Hart, Brookmore Farms; the Cookes', Cooke Livestock, Ken Frieson and Scott Brady, KFC Farms; and Gord and Laurie Rattray, Rattray Livestock will also contribute a very select group of outstanding females to our sale.

I am excited with our sale offering, both bulls and females alike. To both our past and present customers, your needs are also ours. Feel free to stop by the farm anytime or please call. We look forward to hearing from you or on sale day. Try to get by Friday, December 11th for viewing and hospitality.

Brian

WE WILL WINTER YEARLING BULLS TO FEBRUARY 15

*50% Down Sale Day
50% February 15, 2010*

**\$100 OFF YEARLING BULLS
TAKEN RIGHT AFTER THE SALE**

Buyer must insure all bulls left at Atlasta
\$2.50 per day after February 15
Long yearlings & females to go right after the sale

**SATISFACTION GUARANTEED
with our Sight Unseen Purchase Plan**

Call Brian or Doug for Details



*Paul & Carol - Louis & Dawson Theriault
Phone 403-598-6121*

DjH

Welcome to the 4th Annual Atlasta Bull Sale and Seriously Black Select Female Sale

Welcome to the Fourth Annual Atlasta Bull Sale and Seriously Black Select Female Sale.

Brian and Judy Sutter's Atlasta Angus farm have produced top Angus genetics for three decades and the program just gets stronger and stronger as the years roll by. This year Atlasta will present the greatest set of young bulls and females ever.

This fine group of young bulls are from top A.I. sires as well as Atlasta's own top herdsire battery, one of the best in the land, the weaning weights this year were phenomenal, this herd has lots of milk, performance and fertility. These are attractive productive cattle that work.

Brian is one of the most enthusiastic cattle breeders ever, he is dedicated to producing the best seedstock available and not only does his best to breed good Angus but goes the extra mile to service his customers.

Remember Brian will winter the yearling bulls until February 15, 2010. 50% down sale day, 50% February 15, 2010. The two year old bulls are to be picked up after the sale along with the females and need to be paid for sale day.

Again the Seriously Black Female Sale offers a very strong selection of bred heifers and heifer calves from Atlasta and Guest Consignors; Brookmore Angus; KFC Angus, Cooke Livestock and Rattray Livestock.

This is an amazing group of females from some of the top breeders in Western Canada.

Come early, look over the bulls and females Friday afternoon, enjoy the great hospitality Friday evening and take in the sale Saturday and enjoy more fun and Angus fellowship.

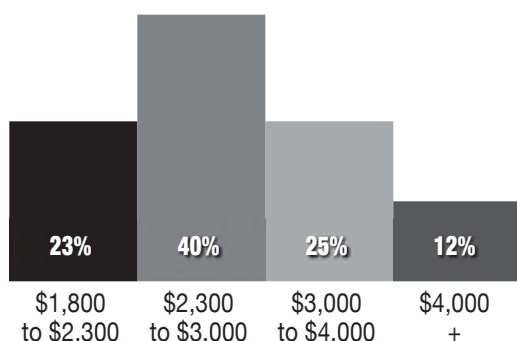
If Brian, Judy, the Seriously Black Consignors, Jack & Barb Hart, Ken & Judy Friesen, Scott Brady, Grant & Sharon Cooke, Krista & Grant Ball, Gordon & Laurie, Linda or myself can be of assistance in anyway please give us a call. Hope to see you at this fun filled Angus event.

Yours truly,
Doug Henderson

Douglas J. Henderson & Associates Ltd.

P.O. Box 5900, Lacombe, Alberta T4L 1X4 Doug & Linda Henderson Phone: (403) 782-3888 Fax: (403) 782-3849 Cel: (403) 350-8541

How the bulls have sold the last 3 years



Brian Sutter loves and knows his cattle as well as anyone I know. He demands good carcass data and high performance numbers. Calves are expected to gain a minimum of 3 pounds per day. If a cow can't consistently produce a calf with that rate of gain, she's down the road.

Today's packer buys on the grid for high cutability, yields and marbling levels - all in the right sized primal cuts.

Atlasta has done its part to provide you with all the power you need in your herd, right here in this catalogue.

Fred W. Taylor, Taylor Made Research
Canada's #1 Carcass Research Team

Atlasta Angus



LOT 1
ATLASTA PREDOMINANT 31W



S A V 004 PREDOMINANT - SIRE OF LOTS 1-6

1 ATLASTA PREDOMINANT 31W

MALE JBS 31W 1527926 JANUARY 07 2009

S A V 8180 TRAVELER 004 NHF AMF
S A V 004 PREDOMINANT 4438 NHF AMF 1291656
S A V EMBLYNETTE 1182

SITZ TRAVELER 8180 NHF AMF
BOYD FOREVER LADY 8003
S A F 598 BANDO 5175 AMF
S A V EMBLYNETTE 7319

ALBERDA TRAVELER 416 NHF AMF
ATLASTA WENDY 35K 995757
ATLASTA WENDY 37H

D H D TRAVELER 6807 NHF AMF
ALBERDA QUEEN KIMBERLY 222
MACC INDIAN NATION 66F
MLA WENDY 3'95

ACTUAL BW	ADJ. 205D	EPDS					
		BW	WW	YW	MILK	TM	YG
92	844	I+1.4 5%	I+41 5%	I+75 5%	I+19 5%	I+39	I+34 5%

2 ATLASTA PREDOMINANT 85W

MALE JBS 85W 1527999 JANUARY 12 2009

S A V 8180 TRAVELER 004 NHF AMF
S A V 004 PREDOMINANT 4438 NHF AMF 1291656
S A V EMBLYNETTE 1182

SITZ TRAVELER 8180 NHF AMF
BOYD FOREVER LADY 8003
S A F 598 BANDO 5175 AMF
S A V EMBLYNETTE 7319

SVF SIEBRINGS FOREVER RUSS NHF AMF
ATLASTA NY ERICA 33P 1236630
ATLASTA ERICA 13H

GDAR SVF RUSS 184B
GDAR SVF FOREVER LADY 214D
ALSIKE ACRES EX NITRO BLAST 3F
MLA ERICA 32'89

ACTUAL BW	ADJ. 205D	EPDS					
		BW	WW	YW	MILK	TM	YG
86	730	I+2.7 5%	I+46 5%	I+85 5%	I+23 5%	I+45	I+40 5%



LOT 2 - ATLASTA PREDOMINANT 85W



ATLASTA NY ERICA 33P
DAM OF LOT 2

Atlasta Angus



SCA
BLACKCAP 33N
DAM OF LOT 3



LOT 3 - ATLASTA PREDOMINANT 94W

3 ATLASTA PREDOMINANT 94W

MALE JBS 94W 1527954 JANUARY 10 2009

S A V 8180 TRAVELER 004 NHF AMF
S A V 004 PREDOMINANT 4438 NHF AMF 1291656
S A V EMBLYNETTE 1182

SITZ TRAVELER 8180 NHF AMF
BOYD FOREVER LADY 8003
S A F 598 BANDO 5175 AMF
S A V EMBLYNETTE 7319

SCA 3299 OF IDEAL 1418
SCA BLACKCAP 33N 1188839
PAPA BLACKCAP 425

IDEAL 1418 OF 8103 4286 NHF AMF
SCA 16E OF IDEAL 033 7258
PAPA RITO T INTENSE DHD 6844
PAPA BLACKCAP 2916

ACTUAL BW	ADJ. 205D	EPDS					
		BW	WW	YW	MILK	TM	YG
95	790	I+2.8 5%	I+53 5%	I+89 5%	I+21 5%	I+47	I+36 5%

4 ATLASTA PREDOMINANT 61W

MALE JBS 61W 1531164 JANUARY 10 2009

S A V 8180 TRAVELER 004 NHF AMF
S A V 004 PREDOMINANT 4438 NHF AMF 1291656
S A V EMBLYNETTE 1182

SITZ TRAVELER 8180 NHF AMF
BOYD FOREVER LADY 8003
S A F 598 BANDO 5175 AMF
S A V EMBLYNETTE 7319

G T MAXIMUM NHF AMF
ATLASTA JUDY ELLEN 42P 1236631
ATLASTA DYNA E 14H

SCOTCH CAP NHF AMF
GT MISS TRAVELER 58
HILL TOP DYNASTY 146F
MLA ELLEN ERICA 4'86

ACTUAL BW	ADJ. 205D	EPDS					
		BW	WW	YW	MILK	TM	YG
92	698	I+2.9 5%	I+48 5%	I+82 5%	I+13 5%	I+36	I+34 5%

LOT 4 - ATLASTA PREDOMINANT 61W

5 ATLASTA PREDOMINANT 9W

MALE JBS 9W 1527925 JANUARY 02 2009

S A V 8180 TRAVELER 004 NHF AMF
S A V 004 PREDOMINANT 4438 NHF AMF 1291656
S A V EMBLYNETTE 1182

SITZ TRAVELER 8180 NHF AMF
BOYD FOREVER LADY 8003
S A F 598 BANDO 5175 AMF
S A V EMBLYNETTE 7319

TC STOCKMAN 365
ATLASTA WW 32K 995679
MLA WENDY 1'94

TC STOCKMAN
TC PRIDE 0014
G D A R WHAM 021 NHF AMF
MLA WENDY 20'87

ACTUAL BW	ADJ. 205D	EPDS					
		BW	WW	YW	MILK	TM	YG
94	754	I+2.1 5%	I+43 5%	I+74 5%	I+16 5%	I+37	I+32 5%



ATLASTA
WW 32K
DAM OF LOT 5

Atlasta Angus



6

ATLASTA PREDOMINANT 56W

MALE JBS 56W 1527915 JANUARY 10 2009

S A V 8180 TRAVELER 004 NHF AMF
S A V 004 PREDOMINANT 4438 NHF AMF 1291656
 S A V EMBLYNETTE 1182

SITZ TRAVELER 8180 NHF AMF
 BOYD FOREVER LADY 8003
 S A F 598 BANDO 5175 AMF
 S A V EMBLYNETTE 7319

MACC INDIAN NATION 66F
ATLASTA WENDY 37H 918574
 MLA WENDY 3'95

HF JUST CRUISIN' 5C
 PEGGY OF ONEILL 2
 WHS PLAYBOY 5B
 MLA WENDY 20'87

ACTUAL BW	ADJ. 205D	EPDS					
		BW	WW	YW	MILK	TM	YG
86	711	+1.2 5%	+39 5%	+67 5%	+16 5%	+35	+28 5%

LOT 6 - ATLASTA PREDOMINANT 56W



7

ATLASTA STOCKMAN 365-83W

MALE JBS 83W 1527978 JANUARY 12 2009

TC STOCKMAN
TC STOCKMAN 365 876845
 TC PRIDE 0014

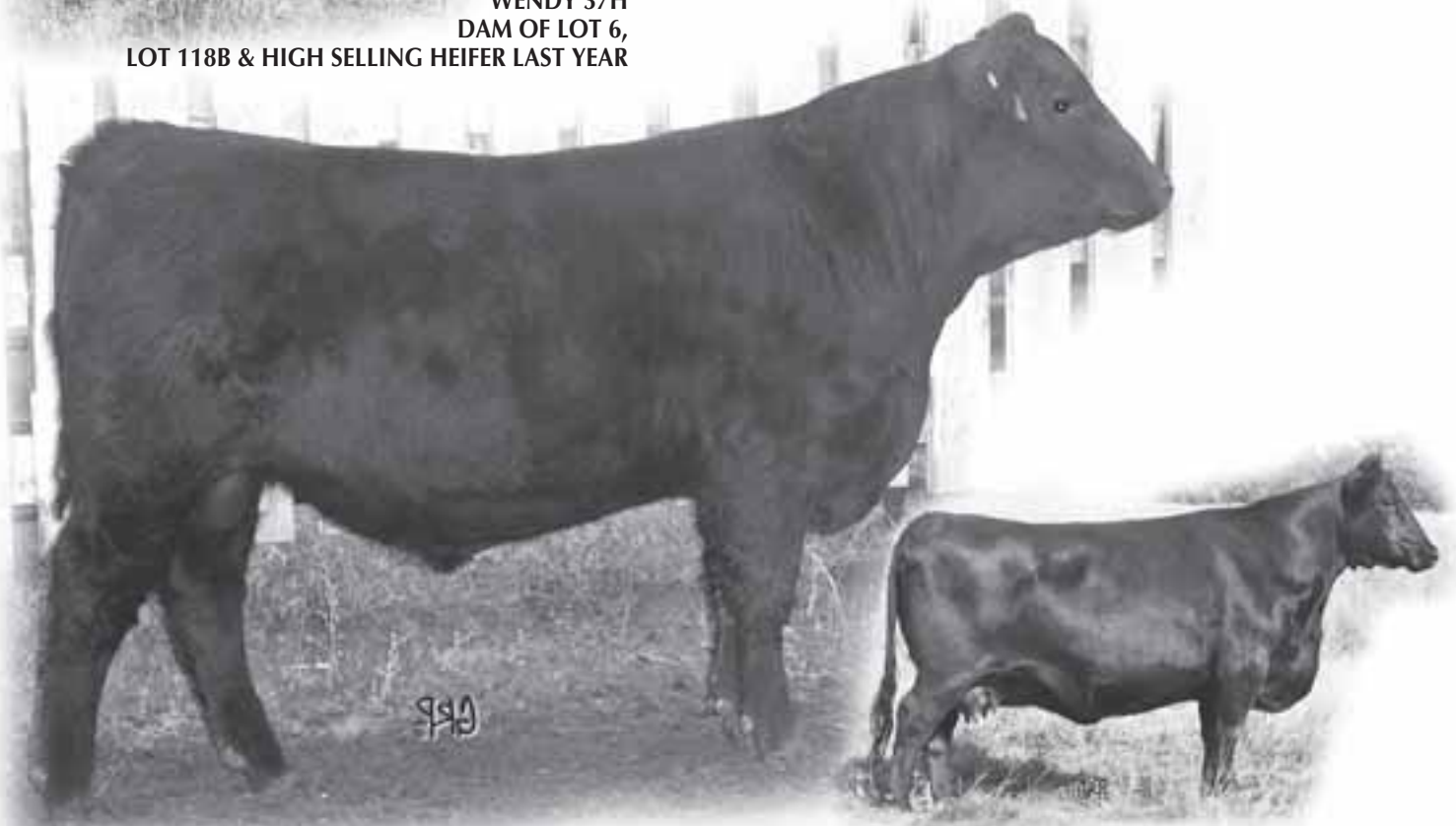
LEACHMAN PROMPTER NHF AMF
 T C JESTRESS 6004
 V D A R NEW TREND 315 NHF AMF
 TC PRIDE 8013

SITZ TRAVELER 8180 NHF AMF
BB BARBARA PERFECTION 12N 1251138
 SITZ BARBARA PERFECTION 770

G D A R TRAVELER 71 NHF AMF
 SITZ EVERELDA ENTENSE 1137
 TRAVELER 124 G D A R
 SITZ BARBARA PERFECTION 1018

ACTUAL BW	ADJ. 205D	EPDS					
		BW	WW	YW	MILK	TM	YG
92	815	+3.0 5%	+38 5%	+72 5%	+23 5%	+42	+34 5%

ATLASTA
 WENDY 37H
 DAM OF LOT 6,
 LOT 118B & HIGH SELLING HEIFER LAST YEAR



LOT 7 - ATLASTA STOCKMAN 365-83W

BB BARBARA PERFECTION 12N - DAM OF LOT 7
 & FLUSH SISTER TO THE DAM OF LOT 15

Atlasta Angus



SVF SIEBRINGS FOREVER RUSS
SIRE OF LOTS 8 & 9



B.B.A.R. LADY MONOGRAM
167'96
DAM OF LOT 8

8 **ATLASTA FOREVER RUSS 55W**

MALE JBS 55W 1526670 (ET) JANUARY 10 2009

GDAR SVF RUSS 184B
SVF SIEBRINGS FOREVER RUSS NHF AMF 1036951
GDAR SVF FOREVER LADY 214D

G D A R EXECUTIVE 727 NHF AMF
G D A R FOREVER LADY 719
TRAVELER 124 G D A R
G D A R FOREVER LADY 718

LEACHMAN RIGHT TIME
B.B.A.R. LADY MONOGRAM 167'96 875528
LADY MONOGAM 67/94

N BAR EMULATION EXT NHF AMF
LEACHMAN ERICA 0025
G T MAXIMUM NHF AMF
F V LADY MONOGRAM 607Y

ACTUAL BW	ADJ. 205D	EPDS						
		BW	WW	YW	MILK	TM	YG	
92	817	I+6.0 5%	I+53 5%	I+98 5%	I+27 5%	I+54	I+45 5%	



LOT 8 - ATLASTA FOREVER RUSS 55W

9 **ATLASTA FOREVER RUSS 64W**

MALE JBS 64W 1526671 (ET) JANUARY 11 2009

GDAR SVF RUSS 184B
SVF SIEBRINGS FOREVER RUSS NHF AMF 1036951
GDAR SVF FOREVER LADY 214D

G D A R EXECUTIVE 727 NHF AMF
G D A R FOREVER LADY 719
TRAVELER 124 G D A R
G D A R FOREVER LADY 718

LEACHMAN RIGHT TIME
B.B.A.R. LADY MONOGRAM 167'96 875528
LADY MONOGAM 67/94

N BAR EMULATION EXT NHF AMF
LEACHMAN ERICA 0025
G T MAXIMUM NHF AMF
F V LADY MONOGRAM 607Y

ACTUAL BW	ADJ. 205D	EPDS						
		BW	WW	YW	MILK	TM	YG	
95	837	I+6.0 5%	I+53 5%	I+98 5%	I+27 5%	I+54	I+45 5%	



LOT 9 - ATLASTA FOREVER RUSS 64W

Atlasta Angus



LOT 10
ATLASTA 34H NET WORTH 30W



ATLASTA ERICA 34H
DAM OF LOTS
10, 11, 12,
13, 14 & 75

10 ATLASTA 34H NET WORTH 30W

MALE JBS 30W 1526674 (ET) JANUARY 07 2009

S A V 8180 TRAVELER 004 NHF AMF
S A V NET WORTH 4200 NHF AMF 1309743
S A V MAY 2410

SITZ TRAVELER 8180 NHF AMF
BOYD FOREVER LADY 8003
S A F 598 BANDO 5175 AMF
S A V MAY 6269

MACC INDIAN NATION 66F
ATLASTA ERICA 34H 918583
MLA ELLEN ERICA 34'95

HF JUST CRUISIN' 5C
PEGGY OF ONEILL 2
WHS PLAYBOY 5B
MLA ELLEN ERICA 4'86

ACTUAL BW	ADJ. 205D	EPDS					
		BW	WW	YW	MILK	TM	YG
95	770	l+3.5 5%	l+44 5%	l+79 5%	l+24 5%	l+46	l+35 5%



11 ATLASTA 34H NET WORTH 35W

MALE JBS 35W 1526675 (ET) JANUARY 08 2009

S A V 8180 TRAVELER 004 NHF AMF
S A V NET WORTH 4200 NHF AMF 1309743
S A V MAY 2410

SITZ TRAVELER 8180 NHF AMF
BOYD FOREVER LADY 8003
S A F 598 BANDO 5175 AMF
S A V MAY 6269

MACC INDIAN NATION 66F
ATLASTA ERICA 34H 918583
MLA ELLEN ERICA 34'95

HF JUST CRUISIN' 5C
PEGGY OF ONEILL 2
WHS PLAYBOY 5B
MLA ELLEN ERICA 4'86

ACTUAL BW	ADJ. 205D	EPDS					
		BW	WW	YW	MILK	TM	YG
90	709	l+3.5 5%	l+44 5%	l+79 5%	l+24 5%	l+46	l+35 5%

LOT 11 - ATLASTA 34H NET WORTH 35W

Atlasta Angus



S A V NET WORTH 4200
SIRE OF LOTS 10 TO 17

LOT 12
ATLASTA 34H
NET WORTH 73W

12 ATLASTA 34H NET WORTH 73W

MALE JBS 73W 1526680 (ET) JANUARY 12 2009

S A V 8180 TRAVELER 004 NHF AMF
S A V NET WORTH 4200 NHF AMF 1309743
S A V MAY 2410

SITZ TRAVELER 8180 NHF AMF
BOYD FOREVER LADY 8003
S A F 598 BANDO 5175 AMF
S A V MAY 6269

MACC INDIAN NATION 66F
ATLASTA ERICA 34H 918583
MLA ELLEN ERICA 34'95

HF JUST CRUISIN' 5C
PEGGY OF ONEILL 2
WHS PLAYBOY 5B
MLA ELLEN ERICA 4'86

ACTUAL BW	ADJ. 205D	EPDS						
		BW	WW	YW	MILK	TM	YG	
85	722	l+3.5 5%	l+44 5%	l+79 5%	l+24 5%	l+46	l+35 5%	



13 ATLASTA 34H NET WORTH 66W

MALE JBS 66W 1526679 (ET) JANUARY 11 2009

S A V 8180 TRAVELER 004 NHF AMF
S A V NET WORTH 4200 NHF AMF 1309743
S A V MAY 2410

SITZ TRAVELER 8180 NHF AMF
BOYD FOREVER LADY 8003
S A F 598 BANDO 5175 AMF
S A V MAY 6269

MACC INDIAN NATION 66F
ATLASTA ERICA 34H 918583
MLA ELLEN ERICA 34'95

HF JUST CRUISIN' 5C
PEGGY OF ONEILL 2
WHS PLAYBOY 5B
MLA ELLEN ERICA 4'86

ACTUAL BW	ADJ. 205D	EPDS						
		BW	WW	YW	MILK	TM	YG	
94	757	l+3.5 5%	l+44 5%	l+79 5%	l+24 5%	l+46	l+35 5%	

14 ATLASTA 34H NET WORTH 78W

MALE JBS 78W 1526681 (ET) JANUARY 13 2009

S A V 8180 TRAVELER 004 NHF AMF
S A V NET WORTH 4200 NHF AMF 1309743
S A V MAY 2410

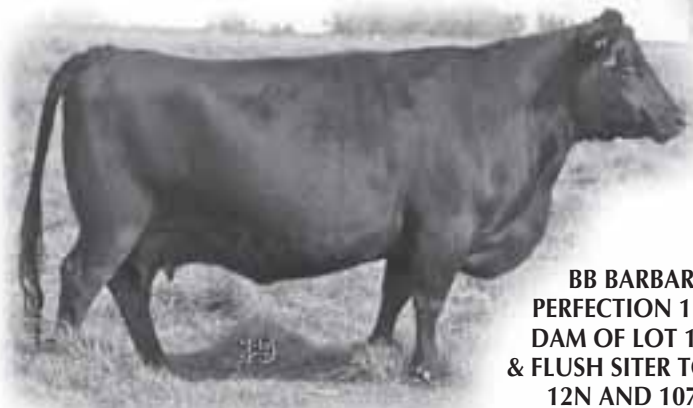
SITZ TRAVELER 8180 NHF AMF
BOYD FOREVER LADY 8003
S A F 598 BANDO 5175 AMF
S A V MAY 6269

MACC INDIAN NATION 66F
ATLASTA ERICA 34H 918583
MLA ELLEN ERICA 34'95

HF JUST CRUISIN' 5C
PEGGY OF ONEILL 2
WHS PLAYBOY 5B
MLA ELLEN ERICA 4'86

ACTUAL BW	ADJ. 205D	EPDS						
		BW	WW	YW	MILK	TM	YG	
94	786	l+3.5 5%	l+44 5%	l+79 5%	l+24 5%	l+46	l+35 5%	

Atlasta Angus



**BB BARBARA
PERFECTION 1N
DAM OF LOT 15
& FLUSH SITER TO
12N AND 107S**



LOT 15 - ATLASTA NET WORTH 8W

15 ATLASTA NET WORTH 8W

MALE JBS 8W 1527971 TWIN JANUARY 02 2009

S A V 8180 TRAVELER 004 NHF AMF
S A V NET WORTH 4200 NHF AMF 1309743
S A V MAY 2410

SITZ TRAVELER 8180 NHF AMF
BOYD FOREVER LADY 8003
S A F 598 BANDO 5175 AMF
S A V MAY 6269

SITZ TRAVELER 8180 NHF AMF
BB BARBARA PERFECTION 1N 1251137
SITZ BARBARA PERFECTION 770

G D A R TRAVELER 71 NHF AMF
SITZ EVERELDA ENTENSE 1137
TRAVELER 124 G D A R
SITZ BARBARA PERFECTION 1018

ACTUAL BW	ADJ. 205D	EPDS					
		BW	WW	YW	MILK	TM	YG
78	729	1+2.9 5%	1+47 5%	1+91 5%	1+27 5%	1+51	1+44 5%

16 ATLASTA NET WORTH 54W

MALE JBS 54W 1531178 JANUARY 10 2009

S A V 8180 TRAVELER 004 NHF AMF
S A V NET WORTH 4200 NHF AMF 1309743
S A V MAY 2410

SITZ TRAVELER 8180 NHF AMF
BOYD FOREVER LADY 8003
S A F 598 BANDO 5175 AMF
S A V MAY 6269

SITZ TRAVELER 8180 NHF AMF
BB BARBARA PERFECTION 107S 1415168
SITZ BARBARA PERFECTION 770

G D A R TRAVELER 71 NHF AMF
SITZ EVERELDA ENTENSE 1137
TRAVELER 124 G D A R
SITZ BARBARA PERFECTION 1018

BW: N/A Adj. 205D: 741 lbs.

**LOT 16
ATLASTA NET WORTH 54W**



**BB BARBARA
PERFECTION 107S
DAM OF LOT 16
& FLUSH SISTER
TO 12N & 1N**



17

ATLASTA NET WORTH 44W

MALE JBS 44W 1527935 JANUARY 08 2009

S A V 8180 TRAVELER 004 NHF AMF
S A V NET WORTH 4200 NHF AMF 1309743
 S A V MAY 2410

SITZ TRAVELER 8180 NHF AMF
 BOYD FOREVER LADY 8003
 S A F 598 BANDO 5175 AMF
 S A V MAY 6269

SVF SIEBRINGS FOREVER RUSS NHF AMF
ATLASTA ERICA 4M 1180949
 MLA ERICA 24'92

GDAR SVF RUSS 184B
 GDAR SVF FOREVER LADY 214D
 MLA CRUSADER 2Z
 MLA ERICA 4Y

ACTUAL BW	ADJ. 205D	EPDS					
		BW	WW	YW	MILK	TM	YG
92	682	I+4.2 5%	I+46 5%	I+90 5%	I+25 5%	I+48	I+44 5%



ATLASTA
 ERICA 4M
 DAM OF LOT 17

Atlasta Angus



LOT 17 - ATLASTA NET WORTH 44W

18

ATLASTA KRUGERAND 16W

MALE JBS 16W 1531166 JANUARY 05 2009

KRUGERRAND OF DONAMERE 490
F A R KRUGERRAND 410H NHF AMF 1140680
 F A R ERIANNA 286F

C H STACKER 7040
 DONAMERE BACHEL BEAUTY 288
 G M A R HI SPADE 039
 F A R ERIANNA 481D

SITZ ALLIANCE 6595 NHF AMF
BB BLACKBIRD 33S 1362466
 SITZ BLACKBIRD 2723

SITZ TRAVELER 8180 NHF AMF
 SITZ BARBARAMERE JET 2698
 SITZ TRAVELER 7641
 SITZ BLACKBIRD 2451

ACTUAL BW	ADJ. 205D	EPDS					
		BW	WW	YW	MILK	TM	YG
92	803	I+4.2 5%	I+38 5%	I+72 5%	I+20 5%	I+38	I+35 5%



LOT 18 - ATLASTA KRUGERAND 16W

19

ATLASTA ON TARGET 60W

MALE JBS 60W 1527908 JANUARY 11 2009

S A F 598 BANDO 5175 AMF
BOYD ON TARGET 1083 NHF AMF 1302247
 BOYD FOREVER LADY 7095

BON VIEW BANDO 598 AMF
 S A F ROYAL LASS 1002
 D H D TRAVELER 6807 NHF AMF
 S V F FOREVER LADY 57D

WHS PLAYBOY 5B
MLA BARBARA 52'95 832876
 MLA BARBARA 27'88

MLA PLAYBOY 2Y
 WINTERING HILLS BLK JANE 40Z
 LARKSPUR NEW YORK TIMES
 MLA BARBARA 14'86

ACTUAL BW	ADJ. 205D	EPDS					
		BW	WW	YW	MILK	TM	YG
88	778	I+2.1 5%	I+37 5%	I+73 5%	I+16 5%	I+34	I+35 5%



LOT 19 - ATLASTA ON TARGET 60W

Atlasta Angus



BOYD ON TARGET
SIRE OF LOTS
19 & 20

20 ATLASTA ON TARGET 34W

MALE JBS 34W 1527921 JANUARY 07 2009

S A F 598 BANDO 5175 AMF
BOYD ON TARGET 1083 NHF AMF 1302247
BOYD FOREVER LADY 7095

BON VIEW BANDO 598 AMF
S A F ROYAL LASS 1002
D H D TRAVELER 6807 NHF AMF
S V F FOREVER LADY 57D

RIVERCREST BLACK STAR 40F
WHS JASMIN 44J 992004
WHS BLACK JANE 19Y

CUDLOBE BLACK STAR 44C
RIVERCREST EUGENIE 11B
ALLEN CROFT CHESTER 03 27W
WHS BLACK JANE 1W

ACTUAL BW	ADJ. 205D	EPDS					
		BW	WW	YW	MILK	TM	YG
92	756	+3.5 5%	+39 5%	+75 5%	+18 5%	+38	+35 5%



LOT 21 - ATLASTA MAXIMUM 14W



ATLASTA DATELINE TINA 3J
DAM OF LOT 22

21 ATLASTA MAXIMUM 14W

MALE JBS 14W 1527929 JANUARY 04 2009

SCOTCH CAP NHF AMF
G T MAXIMUM NHF AMF 690529
GT MISS TRAVELER 58

P S POWER PLAY
HOFF BAND 07 OF S C 509
Q A S TRAVELER 23-4 NHF AMF
G T EVERGREEN 312

TC STOCKMAN 365
ATLASTA STOCK LADY 38L 1044380
MLA MISS BRIDE 9'86

TC STOCKMAN
TC PRIDE 0014
PREMIER SUN RISE
MLA MISS LILY BRIDE 2'80

ACTUAL BW	ADJ. 205D	EPDS					
		BW	WW	YW	MILK	TM	YG
95	790	+3.9 5%	+42 5%	+77 5%	+13 5%	+34	+35 5%

22 ATLASTA MAXIMUM 1W

MALE JBS 1W 1531167 JANUARY 01 2009

SCOTCH CAP NHF AMF
G T MAXIMUM NHF AMF 690529
GT MISS TRAVELER 58

P S POWER PLAY
HOFF BAND 07 OF S C 509
Q A S TRAVELER 23-4 NHF AMF
G T EVERGREEN 312

CONNELLY DATELINE
ATLASTA DATELINE TINA 3J 956488
ATLASTA TINA 14G

D H D TRAVELER 6807 NHF AMF
EILA EILA OF CONANGA AMF
MLA SHAMUS 45E
MLA ELCON 20'93

ACTUAL BW	ADJ. 205D	EPDS					
		BW	WW	YW	MILK	TM	YG
88	794	+3.3 5%	+43 5%	+80 5%	+8 5%	+29	+38 5%



ATLASTA STOCK LADY 38L
DAM OF LOT 21



LOT 22 - ATLASTA MAXIMUM 1W

Atlasta Angus

23X

ATLASTA ALLIANCE 48W

MALE JBS 48W 1527976 JANUARY 08 2009

SITZ TRAVELER 8180 NHF AMF
SITZ ALLIANCE 6595 NHF AMF 1036949
 SITZ BARBARAMERE JET 2698

G D A R TRAVELER 71 NHF AMF
 SITZ EVERELDA ENTENSE 1137
 3 BAR SPIKE 1766
 SITZ BARBAMERE JT 155

N BAR EMULATION EXT NHF AMF
BB LULA 6N 1251143
 NICHOLS LULA Z88

EMULATION N BAR 5522
 N BAR PRIMROSE 2424
 LEACHMAN TONTO NHF AMF
 NICHOLS LULA T79

ACTUAL BW	ADJ. 205D	EPDS					
		BW	WW	YW	MILK	TM	YG
93	832	I+2.7 5%	I+43 5%	I+81 5%	I+26 5%	I+47	I+38 5%

A SALE FEATURE



LOT 23X - ATLASTA ALLIANCE 48W

23

ATLASTA MAXIMUM 20W

MALE JBS 20W 1527930 JANUARY 05 2009

SCOTCH CAP NHF AMF
G T MAXIMUM NHF AMF 690529
 GT MISS TRAVELER 58

P S POWER PLAY
 HOFF BAND 07 OF S C 509
 Q A S TRAVELER 23-4 NHF AMF
 G T EVERGREEN 312

TC STOCKMAN 365
ATLASTA BLACK LADY 42L 1044413
 MLA BLACKCAP 21'95

TC STOCKMAN
 TC PRIDE 0014
 WHS PLAYBOY 5B
 MLA BLACKCAP 4'90

ACTUAL BW	ADJ. 205D	EPDS					
		BW	WW	YW	MILK	TM	YG
92	722	I+3.7 5%	I+42 5%	I+79 5%	I+9 5%	I+30	I+37 5%



LOT 24 - ATLASTA FOCUS 41W



ATLASTA BLACK
 LADY 42L
 DAM OF LOT 23



BB ELSLOW 23P
 DAM OF LOT 24

24

ATLASTA FOCUS 41W

MALE JBS 41W 1531274 JANUARY 08 2009

S A F FOCUS OF E R NHF AMF
BB ATLASTA FOCUS 46S 1415100
 LUKENS 6807 KEM 3956

S A F FAME NHF AMF
 G D A R FOREVER LADY 246
 D H D TRAVELER 6807 NHF AMF
 G D A R KEM 956

SITZ RAINMAKER 9422
BB ELSLOW 23P 1240723
 SITZ ELSLOW 203

SITZ RAINMAKER 6169
 SITZ ELLUNAS ELITE 1920
 SITZ RITO 8980
 SITZ ELSLOW 1571

BW: 86 lbs. Adj. 205D: 771 lbs.

Atlasta Angus

25

ATLASTA FOCUS 177W

MALE JBS 177W 1531275 FEBRUARY 18 2009

S A F FOCUS OF E R NHF AMF
BB ATLASTA FOCUS 46S 1415100
 LUKENS 6807 KEM 3956

S A F FAME NHF AMF
 G D A R FOREVER LADY 246
 D H D TRAVELER 6807 NHF AMF
 G D A R KEM 956

SVF SIEBRINGS FOREVER RUSS NHF AMF
ATLASTA BLACKCAP 28P 1236601
 MLA BLACKCAP 48'93

GDAR SVF RUSS 184B
 GDAR SVF FOREVER LADY 214D
 GET-A-LONG ALAMO 132
 MLA BLACKCAP 6'90

BW: 94 lbs. Adj. 205D: 858 lbs.



LOT 25 - ATLASTA FOCUS 177W



ATLASTA BLACKCAP 28P
 DAM OF LOT 25



LOT 26 - ATLASTA FOCUS 12W

26

ATLASTA FOCUS 12W

MALE JBS 12W 1531256 JANUARY 04 2009

S A F FOCUS OF E R NHF AMF
BB ATLASTA FOCUS 46S 1415100
 LUKENS 6807 KEM 3956

S A F FAME NHF AMF
 G D A R FOREVER LADY 246
 D H D TRAVELER 6807 NHF AMF
 G D A R KEM 956

HF FORMATION 13K
ATLASTA STOCK LADY 46P 1236652
 ATLASTA STOCK LADY 38L

CONNELLY KINCAID
 DURALTA 14C ECHO 32E
 TC STOCKMAN 365
 MLA MISS BRIDE 9'86

BW: 94 lbs. Adj. 205D: 794 lbs.



LOT 27 - ATLASTA FOCUS 159W

27

ATLASTA FOCUS 159W

MALE JBS 159W 1531251 FEBRUARY 09 2009

S A F FOCUS OF E R NHF AMF
BB ATLASTA FOCUS 46S 1415100
 LUKENS 6807 KEM 3956

S A F FAME NHF AMF
 G D A R FOREVER LADY 246
 D H D TRAVELER 6807 NHF AMF
 G D A R KEM 956

PINE DRIVE BIG SKY NHF AMF
BARNETT MISS WISEGUY 9P 1282416
 MYALTA MISS WISEGUY 9C

LE MAR EILEENMERE LAD 549
 BENLOCK BLACKCAP 108K
 WILLABAR WISEGUY 22Y
 FAQ MISS BRIAR 13T 4A

BW: 90 lbs. Adj. 205D: 805 lbs.

Atlasta Angus

28

ATLASTA FOCUS 84W

MALE JBS 84W 1531273 JANUARY 14 2009

S A F FOCUS OF E R NHF AMF
BB ATLASTA FOCUS 46S 1415100
 LUKENS 6807 KEM 3956

MINBURN TRAVELER 74L
BARNETT ERICA 876P 1265464
 SASKALTA ERICA 876H

S A F FAME NHF AMF
 G D A R FOREVER LADY 246
 D H D TRAVELER 6807 NHF AMF
 G D A R KEM 956

GDAR SVF TRAVELER 228D
 DWW MINBURN BLACKBIRD 44W
 JOHNSTON 2100 TRADITION 485Y
 ERICA OLE SASKALTA 7Y

BW: 94 lbs. Adj. 205D: 728 lbs.



LOT 28 - ATLASTA FOCUS 84W

29

ATLASTA FOCUS 97W

MALE JBS 97W 1531259 JANUARY 17 2009

S A F FOCUS OF E R NHF AMF
BB ATLASTA FOCUS 46S 1415100
 LUKENS 6807 KEM 3956

DMM STOCKMAN 106J
ATLASTA LADY 80P 1236617
 ATLASTA LADY 7G

S A F FAME NHF AMF
 G D A R FOREVER LADY 246
 D H D TRAVELER 6807 NHF AMF
 G D A R KEM 956

TC STOCKMAN 365
 DMM MISS ESSENCE 22B
 MLA SHAMUS 45E
 MLA MISS BRIDE 2'91

BW: 78 lbs. Adj. 205D: 745 lbs.

30

ATLASTA FOCUS 99W

MALE JBS 99W 1531276 JANUARY 17 2009

S A F FOCUS OF E R NHF AMF
BB ATLASTA FOCUS 46S 1415100
 LUKENS 6807 KEM 3956

SITZ ALLIANCE 7002
BB BLACKBIRD 28P 1240714
 SITZ BLACKBIRD 1323

S A F FAME NHF AMF
 G D A R FOREVER LADY 246
 D H D TRAVELER 6807 NHF AMF
 G D A R KEM 956

SITZ ALLIANCE 6595 NHF AMF
 SITZ EVERELDA ENTENSE 2466
 HBR VERSATILE 1111 OF 2003
 SITZ BLACKBIRD 1799

BW: 86 lbs. Adj. 205D: 649 lbs.

33

ATLASTA FOCUS 151W

MALE JBS 151W 1531249 FEBRUARY 06 2009

S A F FOCUS OF E R NHF AMF
BB ATLASTA FOCUS 46S 1415100
 LUKENS 6807 KEM 3956

SITZ PCAR EMULATION EXT 8668
BB LADY PRIDE 7P 1240726
 S L S LADY PRIDE 2803

S A F FAME NHF AMF
 G D A R FOREVER LADY 246
 D H D TRAVELER 6807 NHF AMF
 G D A R KEM 956

N BAR EMULATION EXT NHF AMF
 SITZ ELSLOW 546
 SITZ TRAVELER 7641
 S L S LADY PRIDE 1611

BW: 85 lbs. Adj. 205D: 711 lbs.

31 UNREGISTERED BLACK ANGUS BULL

MALE JBS 122W JANUARY 24 2009

SAF FOCUS OF ER
BB ATLASTA FOCUS 46S 1415100
 LUKENS 6807 KEM 3956

CFCC 76K
BARNETT BRIAR 15M 1321088
 FAQ MISS BRIAR 13T

SAF FAME
 GDAR FOREVER LADY 246
 DHD TRAVELER 6807
 GDAR KEM 956

STEVENSON ROYCE 741C
 BASIN TROJAN ERICA DS 637Y
 FISCHER DYNAMO SHOCKER 77R
 FISCHER MISS BRIAR 15F

BW: 76 lbs. WW.: 980 lbs. Oct. 1/09

32

ATLASTA FOCUS 135W

MALE JBS 135W 1531279 FEBRUARY 01 2009

S A F FOCUS OF E R NHF AMF
BB ATLASTA FOCUS 46S 1415100
 LUKENS 6807 KEM 3956

SITZ PCAR EMULATION EXT 8668
BB EISA EVERGREEN 18P 1246433
 SITZ EISA EVERGREEN 2313

S A F FAME NHF AMF
 G D A R FOREVER LADY 246
 D H D TRAVELER 6807 NHF AMF
 G D A R KEM 956

N BAR EMULATION EXT NHF AMF
 SITZ ELSLOW 546
 G D A R TRAVELER 71 NHF AMF
 SITZ EISA EVERGREEN 606

BW: 85 lbs. Adj. 205D: 723 lbs.



REMINGTON
 RIGHT TIME 124R
 SIRE OF LOTS 34 TO 41

Atlasta Angus

34 UNREGISTERED BLACK ANGUS BULL

MALE JBS 127W JANUARY 24 2009

LEACHMAN RIGHT TIME
REMINGTON RIGHT TIME 124R 1291957
 CRESCENT CREEK BLACKCAP 84E

TC STOCKMAN 365
37R UNREGISTERED BLACK ANGUS FEMALE
 AC ANDREA LEAH

N BAR EMULATION EXT
 LEACHMAN ERICA 0025
 RITO 8094 PRAIRIELANE 2060
 CRESCENT CREEK BLACKCAP 112A

TC STOCKMAN
 TC PRIDE 0014
 GDAR SVF RUSS 184B
 W B ALLIES LADY 2

BW: 87 lbs. WW: 975 lbs. Oct. 1/09



LOT 34 - JBS 127W

35 ATLASTA RIGHT TIME 169W

MALE JBS 169W 1528013 FEBRUARY 15 2009

LEACHMAN RIGHT TIME
REMINGTON RIGHT TIME 124R 1291957
 CRESCENT CREEK BLACKCAP 84E

PEAK DOT FAME 414M
BB EMMA E 5R 1297925
 SITZ EMMA E 3003

N BAR EMULATION EXT NHF AMF
 LEACHMAN ERICA 0025
 RITO 8094 PRAIRIELANE 2060
 CRESCENT CREEK BLACKCAP 112A

S A R FAME 2089
 DUCHESS OF PEAK DOT 642K
 SITZ RITO 7491
 SITZ EMMA E 2517

ACTUAL BW	ADJ. 205D	EPDS						
		BW	WW	YW	MILK	TM	YG	
89	810	I+3.8 5%	I+34 5%	I+63 5%	I+20 5%	I+37	I+29 5%	



LOT 35 - ATLASTA RIGHT TIME 169W



ATLASTA BLACKCAP 1R
 DAM OF LOT 36

36 ATLASTA RIGHT TIME 50W

MALE JBS 50W 1528006 JANUARY 09 2009

LEACHMAN RIGHT TIME
REMINGTON RIGHT TIME 124R 1291957
 CRESCENT CREEK BLACKCAP 84E

CONNELLY DATELINE
ATLASTA BLACKCAP 1R 1276742
 ATLASTA BLACKCAP 58N

N BAR EMULATION EXT NHF AMF
 LEACHMAN ERICA 0025
 RITO 8094 PRAIRIELANE 2060
 CRESCENT CREEK BLACKCAP 112A

D H D TRAVELER 6807 NHF AMF
 EILA EILA OF CONANGA AMF
 ATLASTA BATTLE CRY RAMMER 45L
 MLA BLACKCAP 20'91

ACTUAL BW	ADJ. 205D	EPDS						
		BW	WW	YW	MILK	TM	YG	
86	752	I+2.9 5%	I+30 5%	I+59 5%	I+16 5%	I+30	I+29 5%	



LOT 36 - ATLASTA RIGHT TIME 50W



SCA LADY ANN 34R - DAM OF LOT 37

Atlasta Angus



LOT 37
ATLASTA RIGHT
TIME 91W

37 ATLASTA RIGHT TIME 91W

MALE JBS 91W 1528034 JANUARY 15 2009

LEACHMAN RIGHT TIME
REMINGTON RIGHT TIME 124R 1291957
CRESCENT CREEK BLACKCAP 84E

N BAR EMULATION EXT NHF AMF
LEACHMAN ERICA 0025
RITO 8094 PRAIRIELANE 2060
CRESCENT CREEK BLACKCAP 112A

SCA 3299 OF IDEAL 1418
SCA LADY ANN 34R 1292505
SCA LADY ANN 56G

IDEAL 1418 OF 8103 4286 NHF AMF
SCA 16E OF IDEAL 033 7258
LEACHMAN RIGHT TIME
SCA LADY ANN 12X

ACTUAL BW	ADJ. 205D	EPDS						
		BW	WW	YW	MILK	TM	YG	
88	756	I+4.7 5%	I+40 5%	I+75 5%	I+19 5%	I+39	I+35 5%	

40 ATLASTA RIGHT TIME 113W

MALE JBS 113W 1528030 JANUARY 22 2009

LEACHMAN RIGHT TIME
REMINGTON RIGHT TIME 124R 1291957
CRESCENT CREEK BLACKCAP 84E

N BAR EMULATION EXT NHF AMF
LEACHMAN ERICA 0025
RITO 8094 PRAIRIELANE 2060
CRESCENT CREEK BLACKCAP 112A

PEAK DOT FAME 414M
BB LADY PRIDE 22R 1297923
S L S LADY PRIDE 2803

S A R FAME 2089
DUCHESS OF PEAK DOT 642K
SITZ TRAVELER 7641
S L S LADY PRIDE 1611

ACTUAL BW	ADJ. 205D	EPDS						
		BW	WW	YW	MILK	TM	YG	
86	724	I+4.4 5%	I+32 5%	I+62 5%	I+21 5%	I+37	I+29 5%	

38 ATLASTA RIGHT TIME 96W

MALE JBS 96W 1528068 JANUARY 16 2009

LEACHMAN RIGHT TIME
REMINGTON RIGHT TIME 124R 1291957
CRESCENT CREEK BLACKCAP 84E

N BAR EMULATION EXT NHF AMF
LEACHMAN ERICA 0025
RITO 8094 PRAIRIELANE 2060
CRESCENT CREEK BLACKCAP 112A

A C REMINGTON
ATLASTA GEMSTONE 111R 1276636
ALSIKE ACRES GEMSTONE 4H

GDAR SVF RUSS 184B
CHARTERED EMULOUS LADY D319
MOUNTAIN SIDE EXTRA PROVISION
GEM OF GUMBO GULCH 101B

ACTUAL BW	ADJ. 205D	EPDS						
		BW	WW	YW	MILK	TM	YG	
86	762	I+5.1 5%	I+34 5%	I+63 5%	I+14 5%	I+31	I+29 5%	



LOT 38 - ATLASTA RIGHT TIME 96W

39 ATLASTA RIGHT TIME 88W

MALE JBS 88W 1528050 JANUARY 15 2009

LEACHMAN RIGHT TIME
REMINGTON RIGHT TIME 124R 1291957
CRESCENT CREEK BLACKCAP 84E

N BAR EMULATION EXT NHF AMF
LEACHMAN ERICA 0025
RITO 8094 PRAIRIELANE 2060
CRESCENT CREEK BLACKCAP 112A

HF FORMATION 13K
ATLASTA ELLEN 48R 1276635
ATLASTA ELLEN 2H

CONNELLY KINCAID
DURALTA 14C ECHO 32E
ALSIKE ACRES EX NITRO BLAST 3F
ATLASTA REBA 6'96

ACTUAL BW	ADJ. 205D	EPDS						
		BW	WW	YW	MILK	TM	YG	
85	804	I+4.8 5%	I+35 5%	I+64 5%	I+15 5%	I+32	I+30 5%	

41 ATLASTA RIGHT TIME 160W

MALE JBS 160W 1528009 FEBRUARY 09 2009

LEACHMAN RIGHT TIME
REMINGTON RIGHT TIME 124R 1291957
CRESCENT CREEK BLACKCAP 84E

N BAR EMULATION EXT NHF AMF
LEACHMAN ERICA 0025
RITO 8094 PRAIRIELANE 2060
CRESCENT CREEK BLACKCAP 112A

TC FREEDOM 104 AMF
WESTERN ELBA 4R 1291877
ATLASTA ELBA 4J

CONNELLY FOREFRONT NHF AMF
T C RUBY 9095
A J NORTH STAR
MLA ERICA 44'95

BW: 85 lbs. Adj. 205D: 773 lbs.

Atlasta Angus



ATLASTA FOREVER RUSS 37S
SIRE OF LOTS 42-47

42

ATLASTA RUSS 7W

MALE JBS 7W 1528078 JANUARY 01 2009

SVF SIEBRINGS FOREVER RUSS NHF AMF
ATLASTA FOREVER RUSS 37S 1341988
ATLASTA ERICA 34H

GDAR SVF RUSS 184B
GDAR SVF FOREVER LADY 214D
MACC INDIAN NATION 66F
MLA ELLEN ERICA 34'95

CONNEALY TIMELINE
BB PRIDE 15S 1362491
BB PRIDE 2P

CONNEALY DATELINE
ENCHANTS FORTUNE CONANGA 6127
SITZ TRADITION RLS 8702
SITZ PRIDE 3113

ACTUAL BW	ADJ. 205D	EPDS						
		BW	WW	YW	MILK	TM	YG	
92	847	I+4.1 5%	I+48 5%	I+85 5%	I+18 5%	I+42	I+37 5%	



LOT 42 - ATLASTA RUSS 7W

43

ATLASTA RUSS 18W

MALE JBS 18W 1531177 JANUARY 05 2009

SVF SIEBRINGS FOREVER RUSS NHF AMF
ATLASTA FOREVER RUSS 37S 1341988
ATLASTA ERICA 34H

GDAR SVF RUSS 184B
GDAR SVF FOREVER LADY 214D
MACC INDIAN NATION 66F
MLA ELLEN ERICA 34'95

BON VIEW NEW DESIGN 1407 NHF AMF
CHICO BEAUTY LASS 40S 1324039
CHICO BEAUTY LASS 46F

B/R NEW DESIGN 036 NHF AMF
BON VIEW PRIDE 664
V D A R NEW TREND 315 NHF AMF
LLB BEAUTY LASS 67B

BW: 90 lbs. Adj. 205D: 779 lbs.



LOT 43 - ATLASTA RUSS 18W

44

ATLASTA RUSS 65W

MALE JBS 65W 1528100 JANUARY 11 2009

SVF SIEBRINGS FOREVER RUSS NHF AMF
ATLASTA FOREVER RUSS 37S 1341988
ATLASTA ERICA 34H

GDAR SVF RUSS 184B
GDAR SVF FOREVER LADY 214D
MACC INDIAN NATION 66F
MLA ELLEN ERICA 34'95

BASIN MAX 602C NHF AMF
BB BARBARAMERE JET 38S 1364902
SITZ BARBARAMERE JET 2773

G T MAXIMUM NHF AMF
BASIN ELINE ERICA 315U
SITZ EQUALIZER 8021
SITZ BARBARAMERE JET 2579

ACTUAL BW	ADJ. 205D	EPDS					
		BW	WW	YW	MILK	TM	YG
87	754	I+3.8 5%	I+40 5%	I+78 5%	I+18 5%	I+38	I+38 5%

Atlasta Angus



LOT 44 - ATLASTA RUSS 65W

45

ATLASTA RUSS 105W

MALE JBS 105W 1527961 JANUARY 19 2009

SVF SIEBRINGS FOREVER RUSS NHF AMF
ATLASTA FOREVER RUSS 37S 1341988
ATLASTA ERICA 34H

GDAR SVF RUSS 184B
GDAR SVF FOREVER LADY 214D
MACC INDIAN NATION 66F
MLA ELLEN ERICA 34'95

COLDSTREAM SKUKUM 52K
ATLASTA DYNA LADY 69N 1153347
ATLASTA DYNA E 14H

COLDSTREAM DOMINATOR 7G
COLDSTREAM LADY HEATHER 80E
HILL TOP DYNASTY 146F
MLA ELLEN ERICA 4'86

ACTUAL BW	ADJ. 205D	EPDS					
		BW	WW	YW	MILK	TM	YG
95	704	I+2.9 5%	I+32 5%	I+60 5%	I+16 5%	I+31	I+28 5%

46

ATLASTA RUSS 43W

MALE JBS 43W 1528103 JANUARY 08 2009

SVF SIEBRINGS FOREVER RUSS NHF AMF
ATLASTA FOREVER RUSS 37S 1341988
ATLASTA ERICA 34H

GDAR SVF RUSS 184B
GDAR SVF FOREVER LADY 214D
MACC INDIAN NATION 66F
MLA ELLEN ERICA 34'95

SITZ ALLIANCE 6595 NHF AMF
BB BLACKBIRD 39S 1362470
BJ BLACKBIRD 8D

SITZ TRAVELER 8180 NHF AMF
SITZ BARBARAMERE JET 2698
PROSPERITY ACCLAIM 158
BJ BLACKBIRD 1B

ACTUAL BW	ADJ. 205D	EPDS					
		BW	WW	YW	MILK	TM	YG
86	730	I+4.0 5%	I+43 5%	I+75 5%	I+23 5%	I+44	I+32 5%



LOT 45 - ATLASTA RUSS 105W



**BRIAN
& SUGAR**

47

ATLASTA RUSS 148W

MALE JBS 148W 1527968 FEBRUARY 05 2009

SVF SIEBRINGS FOREVER RUSS NHF AMF
ATLASTA FOREVER RUSS 37S 1341988
ATLASTA ERICA 34H

GDAR SVF RUSS 184B
GDAR SVF FOREVER LADY 214D
MACC INDIAN NATION 66F
MLA ELLEN ERICA 34'95

ATLASTA STOCKMAN 33K
WHS NETTIE 99N 1193788
WHS LASSIE 29G

TC STOCKMAN 365
MLA ELLEN ERICA 4'86
WHS CRUSADER 61X
WINTERING HILLS NEONIA 24Z

ACTUAL BW	ADJ. 205D	EPDS					
		BW	WW	YW	MILK	TM	YG
93	709	I+3.8 5%	I+34 5%	I+59 5%	I+17 5%	I+34	I+25 5%

Atlasta Angus



WACHING FINAL ANSWER 6T
SIRE OF LOTS 48-52

48 ATLASTA WACHING FA 32W

MALE JBS 32W 1528105 JANUARY 07 2009

REMITALL RANCH 576R
WACHING FINAL ANSWER 6T 1370504
WACHING BLACK EDELLA 5024

S A V FINAL ANSWER 0035 NHF AMF
HAPPYVALE IDELETTE 6N
WACHING BLACK NITRO 270M
WACHING UNIVERSAL EDELLA 339

B/R NEW FRONTIER 095 NHF AMF
ATLASTA BLACKCAP 44S 1341947
MLA BLACKCAP 51'93

B/R NEW DESIGN 036 NHF AMF
WHITE FENCE PRIDE H1
GET-A-LONG ALAMO 132
MLA BLACKCAP 24'83

ACTUAL BW	ADJ. 205D	EPDS					
		BW	WW	YW	MILK	TM	YG
92	808	I+4.4 5%	I+39 5%	I+72 5%	I+13 5%	I+32	I+34 5%



LOT 48 - ATLASTA WACHING FA 32W

49 ATLASTA WACHING FA 72W

MALE JBS 72W 1528108 JANUARY 12 2009

REMITALL RANCH 576R
WACHING FINAL ANSWER 6T 1370504
WACHING BLACK EDELLA 5024

S A V FINAL ANSWER 0035 NHF AMF
HAPPYVALE IDELETTE 6N
WACHING BLACK NITRO 270M
WACHING UNIVERSAL EDELLA 339

SVF SIEBRINGS FOREVER RUSS NHF AMF
ATLASTA MISS ERICA 63S 1341951
MLA ERICA 6'94

GDAR SVF RUSS 184B
GDAR SVF FOREVER LADY 214D
G D A R WHAM 021 NHF AMF
MLA ERICA 4Y

ACTUAL BW	ADJ. 205D	EPDS					
		BW	WW	YW	MILK	TM	YG
87	796	I+3.8 5%	I+42 5%	I+79 5%	I+21 5%	I+42	I+37 5%



LOT 49 - ATLASTA WACHING FA 72W



ATLASTA MISS ERICA 63S
DAM OF LOT 49

Atlasta Angus



BB FANNY 22S
DAM OF LOT 50

50 ATLASTA WACHING FA 123W

MALE JBS 123W 1528086 JANUARY 24 2009

REMITALL RANCH 576R
WACHING FINAL ANSWER 6T 1370504
WACHING BLACK EDELLA 5024

S A V FINAL ANSWER 0035 NHF AMF
HAPPYVALE IDELETTE 6N
WACHING BLACK NITRO 270M
WACHING UNIVERSAL EDELLA 339

CONNELY LEAD ON NHF AMF
BB FANNY 22S 1364912
SITZ FANNY 2383

CONNELY LEADTIME NHF AMF
ELIGENCE PLUS OF CONANGA
SITZ RAINMAKER 7541
SITZ FANNY 3141

ACTUAL BW	ADJ. 205D	EPDS					
		BW	WW	YW	MILK	TM	YG
88	774	I+3.3 5%	I+42 5%	I+83 5%	I+24 5%	I+45	I+41 5%



LOT 51 - ATLASTA WACHING 130W

51 ATLASTA WACHING 130W

MALE JBS 130W 1531180 JANUARY 27 2009

REMITALL RANCH 576R
WACHING FINAL ANSWER 6T 1370504
WACHING BLACK EDELLA 5024

S A V FINAL ANSWER 0035 NHF AMF
HAPPYVALE IDELETTE 6N
WACHING BLACK NITRO 270M
WACHING UNIVERSAL EDELLA 339

BASIN MAX 602C NHF AMF
BB LADY 35S 1418176
LADY OF PEAK DOT 713L

G T MAXIMUM NHF AMF
BASIN ELINE ERICA 315U
HF MOST WANTED 46H
LADY OF PEAK DOT 315J

ACTUAL BW	ADJ. 205D	EPDS					
		BW	WW	YW	MILK	TM	YG
87	748	I+3.5 5%	I+40 5%	I+79 5%	I+17 5%	I+36	I+39 5%

52 ATLASTA WACHING FA 161W

MALE JBS 161W 1528077 FEBRUARY 10 2009

REMITALL RANCH 576R
WACHING FINAL ANSWER 6T 1370504
WACHING BLACK EDELLA 5024

S A V FINAL ANSWER 0035 NHF AMF
HAPPYVALE IDELETTE 6N
WACHING BLACK NITRO 270M
WACHING UNIVERSAL EDELLA 339

CONNELY TIMELINE
BB BARBARA PERFECTION 8S 1362500
BB BARBARA PERFECTION 12N

CONNELY DATELINE
ENCHANTS FORTUNE CONANGA 6127
SITZ TRAVELER 8180 NHF AMF
SITZ BARBARA PERFECTION 770

ACTUAL BW	ADJ. 205D	EPDS					
		BW	WW	YW	MILK	TM	YG
82	709	I+2.9 5%	I+44 5%	I+82 5%	I+15 5%	I+37	I+39 5%



THE FORMER "CASH" - DECEASED 2009

Atlasta Angus



GRRR TRAFALGAR 19S

53 ATLASTA TRAFALGAR 104W

MALE JBS 104W 1527934 JANUARY 19 2009

SCA 03H OF IDEAL 1418
GRRR TRAFALGAR 19S 1343847
SCA LADY ANN 03K

IDEAL 1418 OF 8103 4286 NHF AMF
SCA 20E OF IDEAL 033 7258
R R SCOTCHCAP 9440 NHF AMF
SCA LADY ANN 12X

HF MOST WANTED 46H
LADY OF PEAK DOT 713L 1048496
LADY OF PEAK DOT 315J

HF WALKER 107E
HFRF ROSEBUD 72F
PEAK DOT GENERAL STONE 25G
LADY OF PEAK DOT 417D

ACTUAL BW	ADJ. 205D	EPDS					
		BW	WW	YW	MILK	TM	YG
94	782	l+4.7 5%	l+39 5%	l+75 5%	l+15 5%	l+35	l+36 5%



LOT 53 - ATLANTA TRAFALGAR 104W

54 ATLASTA TRAFALGAR 165W

MALE JBS 165W 1527932 FEBRUARY 12 2009

SCA 03H OF IDEAL 1418
GRRR TRAFALGAR 19S 1343847
SCA LADY ANN 03K

IDEAL 1418 OF 8103 4286 NHF AMF
SCA 20E OF IDEAL 033 7258
R R SCOTCHCAP 9440 NHF AMF
SCA LADY ANN 12X

CONNELLY DATELINE
ATLASTA PHOEBE 62L 1044536
ATLASTA PRINCESS 157J

D H D TRAVELER 6807 AMF NHF
EILA EILA OF CONANGA AMF
MACC INDIAN NATION 66F
ATLASTA SHEBA 46G

ACTUAL BW	ADJ. 205D	EPDS					
		BW	WW	YW	MILK	TM	YG
92	760	l+4.0 5%	l+40 5%	l+74 5%	l+13 5%	l+33	l+35 5%



LOT 54 - ATLANTA TRAFALGAR 165W

55 ATLASTA TRAFALGER 86W

MALE JBS 86W 1527933 JANUARY 14 2009

SCA 03H OF IDEAL 1418
GRRR TRAFALGAR 19S 1343847
SCA LADY ANN 03K

IDEAL 1418 OF 8103 4286 NHF AMF
SCA 20E OF IDEAL 033 7258
R R SCOTCHCAP 9440 NHF AMF
SCA LADY ANN 12X

LOMA LANES CRACKER JACK 51J
DOUBLE AA ANNIE K 264'01 1051178
DOUBLE AA ANNIE K 533'91

LOMA LANES CRACKER JACK 4F
DURNES KATHLEEN 1W
DOUBLE AA ESTON 18'88
DOUBLE AA ANNIE K 645'83

ACTUAL BW	ADJ. 205D	EPDS					
		BW	WW	YW	MILK	TM	YG
88	679	l+3.8 5%	l+36 5%	l+61 5%	l+7 5%	l+25	l+25 5%

Atlasta Angus



REMITALL PILOT 103P

56

ATLASTA PILOT 145W

MALE JBS 145W 1527992 FEBRUARY 04 2009

REMITALL MERCEDES 146M
REMITALL PILOT 103P 1227174
 HAPPYVALE NEONIA 27E

SITZ ALLIANCE 6595 NHF AMF
 HF TIBBIE 118J
 BALDRIDGE ALFALFA 951
 HAPPYVALE BLACK NEONIA 4X

G T MAXIMUM NHF AMF
ATLASTA ERICA 25P 1236638
 ATLASTA ERICA 50H

SCOTCH CAP NHF AMF
 GT MISS TRAVELER 58
 ALSIKE ACRES EX NITRO BLAST 3F
 MLA ERICA 7'90

ACTUAL BW	ADJ. 205D	EPDS					
		BW	WW	YW	MILK	TM	YG
87	741	I+3.8 5%	I+35 5%	I+69 5%	I+7 5%	I+24	I+34 5%



ATLASTA RITO ERICA 39P DAM OF LOT 58

57

ATLASTA PILOT 156W

MALE JBS 156W 1527923 FEBRUARY 07 2009

REMITALL MERCEDES 146M
REMITALL PILOT 103P 1227174
 HAPPYVALE NEONIA 27E

SITZ ALLIANCE 6595 NHF AMF
 HF TIBBIE 118J
 BALDRIDGE ALFALFA 951
 HAPPYVALE BLACK NEONIA 4X

TC STOCKMAN 365
ATLASTA PRIDE 12K 995646
 MLA BARBARA 14'93

TC STOCKMAN
 TC PRIDE 0014
 GET-A-LONG ALAMO 132
 MLA BARBARA 34'88

ACTUAL BW	ADJ. 205D	EPDS					
		BW	WW	YW	MILK	TM	YG
80	806	I+3.2 5%	I+35 5%	I+66 5%	I+12 5%	I+30	I+31 5%



LOT 56 - ATLASTA PILOT 145W

58

ATLASTA PILOT 137W

MALE JBS 137W 1528002 FEBRUARY 02 2009

REMITALL MERCEDES 146M
REMITALL PILOT 103P 1227174
 HAPPYVALE NEONIA 27E

SITZ ALLIANCE 6595 NHF AMF
 HF TIBBIE 118J
 BALDRIDGE ALFALFA 951
 HAPPYVALE BLACK NEONIA 4X

GRANDVIEW WOMACK DIRECT
ATLASTA RITO ERICA 39P 1236613
 ATLASTA ERICA 10'96

B/R NEW DESIGN 036 NHF AMF
 MENG'S MISS SKYMERE 78B
 WHS PLAYBOY 5B
 MLA ERICA 12'93

ACTUAL BW	ADJ. 205D	EPDS					
		BW	WW	YW	MILK	TM	YG
85	744	I+4.6 5%	I+39 5%	I+70 5%	I+15 5%	I+34	I+32 5%



LOT 57 - ATLASTA PILOT 156W

Atlasta Angus



ATLASTA KINCAID 11P

59

ATLASTA KINCAID 142W

MALE JBS 142W 1531499 FEBRUARY 04 2009

HF FORMATION 13K
ATLASTA KINCAID 111P 1236647
ATLASTA BLACKCAP 28K

CONNELLY KINCAID
DURALTA 14C ECHO 32E
ALBERDA TRAVELER 416 NHF AMF
ATLASTA BLACKCAP 29H

CUDLOBE EXPEDITION 14N
ABSOLUTE ERELITE 6R 1274557
ANB ERELITE 03E

STEVENSON EXPEDITION 859K
CUDLOBE ELINE 15J
HEATHAN'S BART 1B
CHICO ERELITE 42T

BW: 88 lbs. Adj. 205D: 794 lbs.



LOT 59 - ATLASTA KINCAID 142W

60

ATLASTA KINCAID 144W

MALE JBS 144W 1531504 FEBRUARY 04 2009

HF FORMATION 13K
ATLASTA KINCAID 111P 1236647
ATLASTA BLACKCAP 28K

CONNELLY KINCAID
DURALTA 14C ECHO 32E
ALBERDA TRAVELER 416 NHF AMF
ATLASTA BLACKCAP 29H

CENTURY TOUCHSTONE 131
LINDON LADY WREN 11G 899556
BJ LADY WREN 4'91

GINGER HILL DUSTER 89 NHF AMF
WAR SARA 7142 0003
CUDLOBE BLACK STAR 92X
BJ LADY WREN 83'85

BW: 90 lbs. Adj. 205D: 725 lbs.



61 UNREGISTERED BLACK ANGUS BULL

JBS 158W FEBRUARY 9 2009

REMITALL PLAYBOY 4P
REMITALL STOCKHOLDER 631S 1338197
HEATHERBROOK PRIDE 7'04

LLB NIGHT TRAIN 106M
BELVIN LADY BLOSSOM 28'02
REMITALL MERCEDES 146M
HENDERSON PRIDE 36'95

ABSOLUTE STOCKMAN IMAGE 7K
ABSOLUTE 365 ANN 37N 1179404
DOUBLE FOUR ANN 46E

TC STOCKMAN 365
HARMON BLACK LADY 7161
DOUBLE FOUR LEADER 47C
DOUBLE FOUR ANN 53C

BW: 90 lbs. WW: 835 lbs. Oct 1/09

LOT 61 - JBS 158W

Atlasta Angus



NOBLE ACRES FLORA 60N
DAM OF LOTS 62 & 76



BB ALLIANCE 40S

62 ATLASTA ROYAL TRAVELER 174W

MALE JBS 174W 1528203 FEBRUARY 17 2009

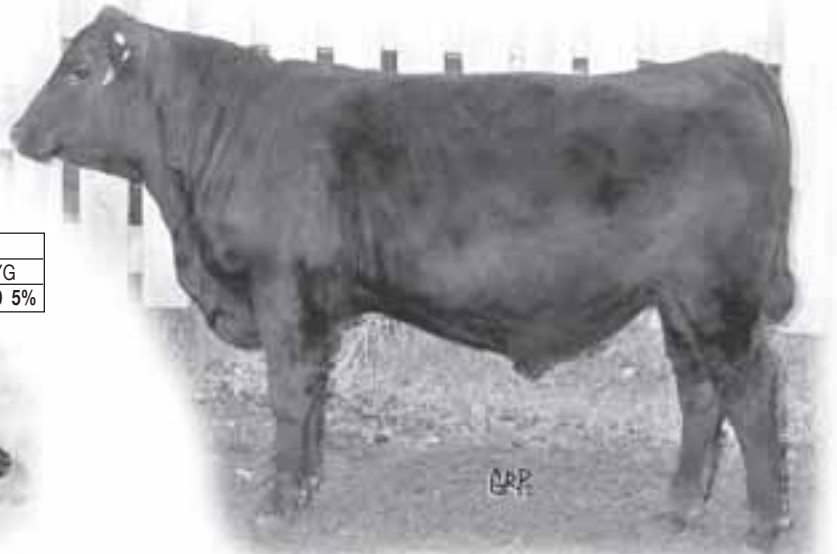
ALBERDA TRAVELER 416 NHF AMF
ROYAL TRAVELER DRCC 6068S 1353251
RALLY KATINKA 229B

D H D TRAVELER 6807 NHF AMF
ALBERDA QUEEN KIMBERLY 222
N BAR EMULATION EXT NHF AMF
HARMONY HILL KATINKA 229

PINE DRIVE BIG SKY NHF AMF
NOBLE ACRES FLORA 60N 1156753
NOBLE ACRES FLORA 1H

LE MAR EILEENMERE LAD 549
BENLOCK BLACKCAP 108K
G D A R TRAVELER 71 NHF AMF
NOBLE ACRES FLORA 37E

ACTUAL BW	ADJ. 205D	EPDS						
		BW	WW	YW	MILK	TM	YG	
86	775	1+3.7 5%	1+40 5%	1+70 5%	1+21 5%	1+41	1+30 5%	



LOT 62 - ATLASTA ROYAL TRAVELER 174W



ATLASTA BB BLACKCAP 012T - DAM OF LOT 63

63 ATLASTA ALLIANCE 82W

MALE JBS 82W 1528133 JANUARY 13 2009

SITZ ALLIANCE 6595 NHF AMF
BB ALLIANCE 40S 1362471
WHS ISABELLA 3J

SITZ TRAVELER 8180 NHF AMF
SITZ BARBARAMERE JET 2698
STEVENSON FORTUNE 425C AMF
WHS SUNSHINE 58G

BON VIEW NEW DESIGN 878 NHF AMF
ATLASTA BB BLACKCAP 012T 1411485
BB BLACKCAP 15P

B/R NEW DESIGN 036 NHF AMF
BON VIEW GAMMER 85
SITZ TRADITION RLS 8702
SITZ BLACKCAP 2233

ACTUAL BW	ADJ. 205D	EPDS						
		BW	WW	YW	MILK	TM	YG	
86	860	1+1.5 5%	1+44 5%	1+79 5%	1+21 5%	1+43	1+35 5%	



LOT 63 - ATLASTA ALLIANCE 82W

Atlasta Angus



64

ATLASTA ALLIANCE 116W

MALE JBS 116W 1528191 JANUARY 22 2009

SITZ ALLIANCE 6595 NHF AMF
BB ALLIANCE 40S 1362471
 WHS ISABELLA 3J

SITZ TRAVELER 8180 NHF AMF
 SITZ BARBARAMERE JET 2698
 STEVENSON FORTUNE 425C AMF
 WHS SUNSHINE 58G

S A F NEUTRON NHF AMF
ATLASTA BB BARBARA 061T 1417935
 SLS BARBARA PERFECTION 1331

V D A R NEW TREND 315 NHF AMF
 S A F DUCHESS 9029
 TRAVELER 124 G D A R
 SLS BARBARA PERFECTION 847

BW: 90 lbs. Adj. 205D: 802 lbs.

LOT 64 - ATLASTA ALLIANCE 116W

65

ATLASTA ALLIANCE 76W

MALE JBS 76W 1528152 JANUARY 12 2009

SITZ ALLIANCE 6595 NHF AMF
BB ALLIANCE 40S 1362471
 WHS ISABELLA 3J

SITZ TRAVELER 8180 NHF AMF
 SITZ BARBARAMERE JET 2698
 STEVENSON FORTUNE 425C AMF
 WHS SUNSHINE 58G

BOYD ON TARGET 1083 NHF AMF
ATLASTA BB ANNIE K 031T 1411467
 DOUBLE AA ANNIE K 264'01

S A F 598 BANDO 5175 AMF
 BOYD FOREVER LADY 7095
 LOMA LANES CRACKER JACK 51J
 DOUBLE AA ANNIE K 533'91

ACTUAL BW	ADJ. 205D	EPDS						
		BW	WW	YW	MILK	TM	YG	
86	713	I+2.1 5%	I+38 5%	I+69 5%	I+14 5%	I+33	I+31 5%	

66

ATLASTA ALLIANCE 87W

MALE JBS 87W 1528137 JANUARY 15 2009

SITZ ALLIANCE 6595 NHF AMF
BB ALLIANCE 40S 1362471
 WHS ISABELLA 3J

SITZ TRAVELER 8180 NHF AMF
 SITZ BARBARAMERE JET 2698
 STEVENSON FORTUNE 425C AMF
 WHS SUNSHINE 58G

BOYD ON TARGET 1083 NHF AMF
ATLASTA BB BELLE 013T 1411456
 SITZ BONNIE BELLE 123

S A F 598 BANDO 5175 AMF
 BOYD FOREVER LADY 7095
 IDEAL 0340 SUPER X 5189 8234
 SITZ BONNIE BELLE 2810

ACTUAL BW	ADJ. 205D	EPDS						
		BW	WW	YW	MILK	TM	YG	
84	788	I+2.2 5%	I+37 5%	I+74 5%	I+16 5%	I+34	I+37 5%	

Wild Kingdom



Judy calls this pen 'The Wild Kingdom' because of all the bellowing that goes on the in evenings!

Atlasta Angus



JDM KRUGERRAND 1'04

67 ATLASTA KRUGERAND 63W

MALE JBS 63W 1528145 JANUARY 11 2009

JDM KRUGERRAND 1'04
ATLASTA KRUGERAND 54T 1405473
 ATLASTA BLACKCAP 1R

F A R KRUGERRAND 410H NHF AMF
 JDM BLOSSOM 9'98
 CONNEALY DATELINE
 ATLASTA BLACKCAP 58N

HF COMMANDER 60P
ATLASTA GT WENDY 24T 1405456
 ATLASTA WENDY 16P

TC FREEDOM 104 AMF
 DURALTA 14C ECHO 32E
 G T MAXIMUM NHF AMF
 MLA WENDY 1'94

ACTUAL BW	ADJ. 205D	EPDS						
		BW	WW	YW	MILK	TM	YG	
84	822	I+3.3 5%	I+41 5%	I+75 5%	I+14 5%	I+35	I+34 5%	

LOT 67 - ATLASTA KRUGERAND 63W

68 ATLASTA KRUGERAND 59W

MALE JBS 59W 1528175 JANUARY 09 2009

JDM KRUGERRAND 1'04
ATLASTA KRUGERAND 54T 1405473
 ATLASTA BLACKCAP 1R

F A R KRUGERRAND 410H NHF AMF
 JDM BLOSSOM 9'98
 CONNEALY DATELINE
 ATLASTA BLACKCAP 58N

TC FREEDOM 104 AMF
ATLASTA ERICA 95T 1405326
 MLA ERICA 6'94

CONNEALY FOREFRONT NHF AMF
 T C RUBY 9095
 G D A R WHAM 021 NHF AMF
 MLA ERICA 4Y

ACTUAL BW	ADJ. 205D	EPDS						
		BW	WW	YW	MILK	TM	YG	
85	706	I+3.5 5%	I+36 5%	I+68 5%	I+18 5%	I+36	I+32 5%	

69 ATLASTA KRUGERAND 93W

MALE JBS 93W 1528189 JANUARY 16 2009

JDM KRUGERRAND 1'04
ATLASTA KRUGERAND 54T 1405473
 ATLASTA BLACKCAP 1R

F A R KRUGERRAND 410H NHF AMF
 JDM BLOSSOM 9'98
 CONNEALY DATELINE
 ATLASTA BLACKCAP 58N

N BAR EMULATION EXT NHF AMF
ATLASTA BB BANDO 493 063T 1415190
 GAR BANDO 493

EMULATION N BAR 5522
 N BAR PRIMROSE 2424
 TEHAMA BANDO 155 NHF AMF
 G A R TRAVELER 641

BW: 76 lbs. Adj. 205D: 720 lbs.



ATLASTA
 ERICA 95T
 DAM OF LOT 68



LOT 67 - ATLASTA KRUGERAND 63W



LOT 68 - ATLASTA KRUGERAND 59W

Atlasta Angus

Long Yearlings



LOT 70
TRAFALGER
144U

70

ATLASTA TRAFALGER 144U

MALE JBS 144U 1473774 FEBRUARY 04 2008

SCA 03H OF IDEAL 1418
GGRR TRAFALGAR 19S 1343847
SCA LADY ANN 03K

IDEAL 1418 OF 8103 4286 NHF AMF
SCA 20E OF IDEAL 033 7258
R R SCOTCHCAP 9440 NHF AMF
SCA LADY ANN 12X

PINE DRIVE BIG SKY NHF AMF
BARNETT MISS WISEGUY 9P 1282416
MYALTA MISS WISEGUY 9C

LE MAR EILEENMERE LAD 549
BENLOCK BLACKCAP 108K
WILLABAR WISEGUY 22Y
FAQ MISS BRIAR 13T 4A

ACTUAL BW	ADJ. 205D	EPDS					
		BW	WW	YW	MILK	TM	YG
102	774	+7.5 31%	+46 19%	+75 10%	+15 11%	+38	+30 10%



LOT 71
ATLASTA 37S
RUSS 103U

71

ATLASTA 37S RUSS 103U

MALE JBS 103U 1473695 JANUARY 23 2008

SVF SIEBRINGS FOREVER RUSS NHF AMF
ATLASTA FOREVER RUSS 37S 1341988
ATLASTA ERICA 34H

GDAR SVF RUSS 184B
GDAR SVF FOREVER LADY 214D
MACC INDIAN NATION 66F
MLA ELLEN ERICA 34'95

SCA KRUGERRAND 69G
SCA FLORA 57K 999418
GET-A-LONG FLORA 055

KRUGERRAND OF DONAMERE 490
SCA ERROLLINE 38C
RITO 2100 G D A R
DOUBLE FOUR FLORA 130U

ACTUAL BW	ADJ. 205D	EPDS					
		BW	WW	YW	MILK	TM	YG
88	717	+3.8 33%	+39 21%	+67 9%	+14 11%	+34	+28 9%



LOT 72
ATLASTA
RUSS 105W

72

ATLASTA RUSS 105W

MALE JBS 105W 1527961 JANUARY 19 2009

SVF SIEBRINGS FOREVER RUSS NHF AMF
ATLASTA FOREVER RUSS 37S 1341988
ATLASTA ERICA 34H

GDAR SVF RUSS 184B
GDAR SVF FOREVER LADY 214D
MACC INDIAN NATION 66F
MLA ELLEN ERICA 34'95

COLDSTREAM SKUKUM 52K
ATLASTA DYNA LADY 69N 1153347
ATLASTA DYNA E 14H

COLDSTREAM DOMINATOR 7G
COLDSTREAM LADY HEATHER 80E
HILL TOP DYNASTY 146F
MLA ELLEN ERICA 4'86

ACTUAL BW	ADJ. 205D	EPDS					
		BW	WW	YW	MILK	TM	YG
95	704	+2.9 5%	+32 5%	+60 5%	+16 5%	+31	+28 5%



LOT 73
ATLASTA
COMMANDER
48U

73

ATLASTA COMMANDER 48U

MALE JBS 48U 1473872 JANUARY 11 2008

TC FREEDOM 104 AMF
HF COMMANDER 60P 1215068
DURALTA 14C ECHO 32E

CONNELLY FOREFRONT NHF AMF
T C RUBY 9095
HF WALK-ON 14C
STONEHAVEN MISS PONDEROSA 9U

KEN CARYL BEST WESTERN 022C
HARMON BLACK LADY 7161 952383
HARMON BLACK LADY 4773

HOFF GREAT WESTERN S C 456
MISS GB INDEPENDENCE 7138
BIG DRY RANCHERS CHOICE 1673
HARMON BLACK LADY 3100

ACTUAL BW	ADJ. 205D	EPDS					
		BW	WW	YW	MILK	TM	YG
96	676	+5.7 35%	+30 24%	+56 11%	+15 13%	+30	+26 11%

74

ATLASTA 45J PILOT 209U

MALE JBS 209U 1473689 MARCH 30 2008

REMITALL MERCEDES 146M
REMITALL PILOT 103P 1227174
HAPPYVALE NEONIA 27E

SITZ ALLIANCE 6595 NHF AMF
HF TIBBIE 118J
BALDRIDGE ALFALFA 951
HAPPYVALE BLACK NEONIA 4X

TC STOCKMAN 365
ATLASTA PRIDE 45J 956433
MLA ELLEN ERICA 36'93

TC STOCKMAN
TC PRIDE 0014
MLA CRUSADER 2Z
MLA ELLEN ERICA 8'80

ACTUAL BW	ADJ. 205D	EPDS					
		BW	WW	YW	MILK	TM	YG
80	631	+2.5 34%	+30 24%	+59 14%	+14 11%	+29	+28 14%

Atlasta Angus



LOT 74
ATLASTA 45J
PILOT 209U

75

ATLASTA PILOT 164U

MALE JBS 164U 1473677 FEBRUARY 13 2008

REMITALL MERCEDES 146M
REMITALL PILOT 103P 1227174
HAPPYVALE NEONIA 27E

SITZ ALLIANCE 6595 NHF AMF
HF TIBBIE 118J
BALDRIDGE ALFALFA 951
HAPPYVALE BLACK NEONIA 4X

MACC INDIAN NATION 66F
ATLASTA ERICA 34H 918583
MLA ELLEN ERICA 34'95

HF JUST CRUISIN' 5C
PEGGY OF ONEILL 2
WHS PLAYBOY 5B
MLA ELLEN ERICA 4'86

ACTUAL BW	ADJ. 205D	EPDS					
		BW	WW	YW	MILK	TM	YG
86	721	+2.6 35%	+37 25%	+63 14%	+12 10%	+31	+26 14%



ATLASTA
ERICA 34H
DAM OF LOTS 75,
10, 11, 12, 13 & 14

76

ATLASTA PILOT 207U

MALE JBS 207U 1473742 MARCH 26 2008

REMITALL MERCEDES 146M
REMITALL PILOT 103P 1227174
HAPPYVALE NEONIA 27E

SITZ ALLIANCE 6595 NHF AMF
HF TIBBIE 118J
BALDRIDGE ALFALFA 951
HAPPYVALE BLACK NEONIA 4X

PINE DRIVE BIG SKY NHF AMF
NOBLE ACRES FLORA 60N 1156753
NOBLE ACRES FLORA 1H

LE MAR EILEENMERE LAD 549
BENLOCK BLACKCAP 108K
G D A R TRAVELER 71 NHF AMF
NOBLE ACRES FLORA 37E

ACTUAL BW	ADJ. 205D	EPDS					
		BW	WW	YW	MILK	TM	YG
85	666	+3.7 33%	+36 23%	+65 15%	+15 11%	+33	+30 15%

77

ATLASTA CASH 223U

MALE JBS 223U 1473730 MAY 05 2008

REMITALL MERCEDES 146M
REMITALL PILOT 103P 1227174
HAPPYVALE NEONIA 27E

JUSTAMERE 1118 CASH 665P
REMITALL SUPEREVENT 532S 1338191
KBJ ANNIE 829N

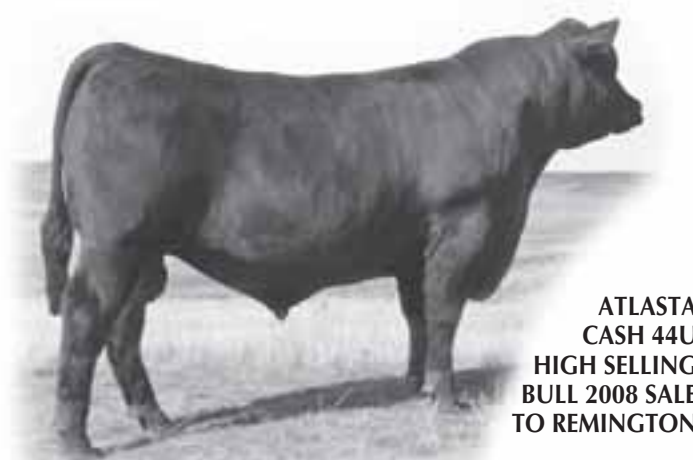
EXAR BIG TIMBER 1118
REMITALL KEEPSAKE 143L
LLB TRAVELER 297K
KBJ ANNIE 438L

PINE DRIVE BIG SKY NHF AMF
NOBLE ACRES FLORA 60N 1156753
NOBLE ACRES FLORA 1H

O G L BATTLE CRY 427 128
ATLASTA WENDY 135M 1131067
MLA WENDY 49'93

NICHOLS EUREKA W57
O G L DUSTY ROSE 128 902
GET-A-LONG ALAMO 132
MLA WENDY 10'88

ACTUAL BW	ADJ. 205D	EPDS					
		BW	WW	YW	MILK	TM	YG
84		+5.1 5%	+49 5%	+85 5%	+21 5%	+46	+36 5%



ATLASTA
CASH 44U
HIGH SELLING
BULL 2008 SALE
TO REMINGTON



LOT 77
ATLASTA
CASH 223U

Atlasta Angus

78 UNREGISTERED BLACK ANGUS BULL

JBS 228U JULY 14 2008

JUSTAMERE 1118 CASH 665P
REMITALL SUPEREVENT 532S 1338191
 KBJ ANNIE 829N

EXAR BIG TIMBER 1118
 REMITALL KEEPSAKE 143L
 LLB TRAVELER 297K
 KBJ ANNIE 438L

THREE TREES PRIME CUT 0145
ATLASTA BB ELSLOW 02T 1411450
 BB ELSLOW 7R

SUMMITCREST PRIME CUT 1G42
 BLACK TOOTH LADY B 380
 PEAK DOT FAME 414M
 SITZ ELSLOW 203

BW: 78 lbs.



LOT 79 - SWARTZ ULTIMATE DYNASTY

79 SWARTZ ULTIMATE DYNASTY

MALE SWAR 15U 1475401 APRIL 03 2008

DFI 03G MAN 36M
ATLASTA ST DYNASTY 21S 1342093
 ATLASTA PRINCESS 157J

DMM DYNASTY 03G
 MVF TIBBIE 058K
 MACC INDIAN NATION 66F
 ATLASTA SHEBA 46G

ATLASTA STOCKMAN 33K
SWARTZ PATRICIA 1239029
 SCC ALTA EDNA 23G

TC STOCKMAN 365
 MLA ELLEN ERICA 4'86
 LOR WIN DUDE 7B
 SCC ALTA EDNA 22C

ACTUAL BW	ADJ. 205D	EPDS					
		BW	WW	YW	MILK	TM	YG
99	754	+3.5 28%	+35 16%	+54 5%	+20 6%	+38	+18 5%



LOT 80 - SWARTZ UNTIL TIME

80 SWARTZ UNTIL TIME

MALE SWAR 3U 1475398 FEBRUARY 02 2008

LEACHMAN RIGHT TIME
REMINGTON RIGHT TIME 124R 1291957
 CRESCENT CREEK BLACKCAP 84E

N BAR EMULATION EXT NHF AMF
 LEACHMAN ERICA 0025
 RITO 8094 PRAIRIELANE 2060
 CRESCENT CREEK BLACKCAP 112A

SITZ TRAVELER 8180 NHF AMF
BB ATLASTA BARBARA 65S 1415066
 SITZ BARBARA PERFECTION 770

G D A R TRAVELER 71 NHF AMF
 SITZ EVERELDA ENTENSE 1137
 TRAVELER 124 G D A R
 SITZ BARBARA PERFECTION 1018

ACTUAL BW	ADJ. 205D	EPDS					
		BW	WW	YW	MILK	TM	YG
86	660	+3.0 31%	+33 20%	+66 11%	+19 12%	+36	+33 11%

82 SWARTZ UNCLE TIME

MALE SWAR 2U 1476615 JANUARY 17 2008

LEACHMAN RIGHT TIME
REMINGTON RIGHT TIME 124R 1291957
 CRESCENT CREEK BLACKCAP 84E

N BAR EMULATION EXT NHF AMF
 LEACHMAN ERICA 0025
 RITO 8094 PRAIRIELANE 2060
 CRESCENT CREEK BLACKCAP 112A

GRANDVIEW WOMACK DIRECT
ATLASTA ERICA 49S 1342172
 ATLASTA ERICA 4M

B/R NEW DESIGN 036 NHF AMF
 MENGS MISS SKYMERE 78B
 SVF SIEBRINGS FOREVER RUSS NHF AMF
 MLA ERICA 24'92

ACTUAL BW	ADJ. 205D	EPDS					
		BW	WW	YW	MILK	TM	YG
87	616	+4.6 32%	+36 20%	+67 10%	+17 11%	+35	+32 10%

81 SWARTZ UPTIME

MALE SWAR 1U 1475397 JANUARY 04 2008

LEACHMAN RIGHT TIME
REMINGTON RIGHT TIME 124R 1291957
 CRESCENT CREEK BLACKCAP 84E

N BAR EMULATION EXT NHF AMF
 LEACHMAN ERICA 0025
 RITO 8094 PRAIRIELANE 2060
 CRESCENT CREEK BLACKCAP 112A

G T MAXIMUM NHF AMF
ATLASTA GT WENDY 1S 1341992
 ATLASTA WENDY 37H

SCOTCH CAP NHF AMF
 GT MISS TRAVELER 58
 MACC INDIAN NATION 66F
 MLA WENDY 3'95

ACTUAL BW	ADJ. 205D	EPDS					
		BW	WW	YW	MILK	TM	YG
86		1+3.4 5%	1+34 5%	1+67 5%	1+13 5%	1+30	1+33 5%

83 FARVA URICK DYNASTY

MALE FFCN 13U 1479588 MARCH 30 2008

DFI 03G MAN 36M
ATLASTA ST DYNASTY 21S 1342093
 ATLASTA PRINCESS 157J

DMM DYNASTY 03G
 MVF TIBBIE 058K
 MACC INDIAN NATION 66F
 ATLASTA SHEBA 46G

ATLASTA STOCKMAN 33K
SWARTZ ALTA RUTH 1297437
 SCC ALTA EDNA 23G

TC STOCKMAN 365
 MLA ELLEN ERICA 4'86
 LOR WIN DUDE 7B
 SCC ALTA EDNA 22C

BW: 93 lbs. Adj. 205D: 661 lbs.

Atlasta Angus

84 ATLASTA NIGHT HAWK 32'08

MALE SJH 32U 1462044 APRIL 01 2008

VERMILION DATELINE 7078 NHF AMF
REMITALL NIGHTHAWK 37N 1171920
 DIAMOND D EVERA 073G

CONNEALY DATELINE
 VERMILION BLACKBIRD 5044
 LEACHMAN RIGHT TIME
 EVERA OF G G 73X

WK FREIGHTLINER
PERRYVILLE ECLAIR 20K 1035896
 PERRYVILLE NAV ECLAIR 26C

CONNEALY DATELINE
 WK MISS 2345
 WIWA CREEK NAVIGATOR 59'90
 PERRYVILLE ERICA 28S

ACTUAL BW	ADJ. 205D	EPDS					
		BW	WW	YW	MILK	TM	YG
103	672	+6.1 34%	+49 25%	+92 16%	+13 14%	+38	+42 16%



LOT 84 - ATLASTA NIGHT HAWK 32'08

85 ATLASTA NIGHT HAWK 35'08

MALE SJH 35U 1462040 APRIL 04 2008

VERMILION DATELINE 7078 NHF AMF
REMITALL NIGHTHAWK 37N 1171920
 DIAMOND D EVERA 073G

CONNEALY DATELINE
 VERMILION BLACKBIRD 5044
 LEACHMAN RIGHT TIME
 EVERA OF G G 73X

PERRYVILLE ZENITH 6F
PERRYVILLE PEARL 49H 944395
 PERRYVILLE MO PEARL 20X

WK STACKER 4386
 PERRYVILLE SAM NATASHA 39Z
 PERRYVILLE MOZART 7U
 PERRYVILLE ROSCOE PEARL 12R

ACTUAL BW	ADJ. 205D	EPDS					
		BW	WW	YW	MILK	TM	YG
90	644	+4.0 34%	+44 24%	+82 15%	+12 13%	+34	+38 15%



LOT 85 - ATLASTA NIGHT HAWK 35'08

86 ATLASTA NIGHT HAWK 6'08

MALE SJH 6U 1462038 MARCH 11 2008

VERMILION DATELINE 7078 NHF AMF
REMITALL NIGHTHAWK 37N 1171920
 DIAMOND D EVERA 073G

CONNEALY DATELINE
 VERMILION BLACKBIRD 5044
 LEACHMAN RIGHT TIME
 EVERA OF G G 73X

CRAVEN PINE TAR 33U
HENDERSON LADY EILEEN 29'95 828568
 HEATHERBROOK LADY EILEEN 22'84

J K PINE TAR
 CRAVEN PANSY 1N
 P S POWER PLAY
 HEATHERBROOK LADY 105'77

ACTUAL BW	ADJ. 205D	EPDS					
		BW	WW	YW	MILK	TM	YG
96	554	+5.4 35%	+31 25%	+64 16%	+17 14%	+33	+33 16%

87 ATLASTA SARATOGA 24'08

MALE SJH 24U 1462083 MARCH 21 2008

SITZ TRADITION RLS 8702
REMITALL SARATOGA 508S 1338077
 CAYMEN ROSE 57'01

VERMILION DATELINE 7078 NHF AMF
 R L S EISA EVERGREEN 5018
 HDAF CAVALIER 15H
 CAYMEN ROSE 17'96

REMITALL MERCEDES 146M
HENDERSON MISTY 43S 1348937
 PERRYVILLE MYSTIQUE 14K

SITZ ALLIANCE 6595 NHF AMF
 HF TIBBIE 118J
 WK FREIGHTLINER
 PERRYVILLE NAV MISTY 36D

ACTUAL BW	ADJ. 205D	EPDS					
		BW	WW	YW	MILK	TM	YG
82	486	+3.7 32%	+33 21%	+68 10%	+13 9%	+30	+35 10%

Atlasta Angus

88 ATLASTA SARATOGA 25'08

MALE SJH 25U 1462090 MARCH 21 2008

SITZ TRADITION RLS 8702
REMITALL SARATOGA 508S 1338077
 CAYMEN ROSE 57'01

VERMILION DATELINE 7078 NHF AMF
 R L S EISA EVERGREEN 5018
 HDAF CAVALIER 15H
 CAYMEN ROSE 17'96

SITZ TRADITION RLS 8702
REMITALL NATASHA 559S 1338210
 HENDERSON NATASHA 21P

VERMILION DATELINE 7078 NHF AMF
 R L S EISA EVERGREEN 5018
 PERRYVILLE RESOLVE 18M
 PERRYVILLE NICE 49M

ACTUAL BW	ADJ. 205D	EPDS					
		BW	WW	YW	MILK	TM	YG
82	640	+1.5 32%	+48 21%	+79 11%	+16 10%	+40	+31 11%



REMITALL H RACHIS 21R
 PATERNAL BROTHER TO LOST 84, 85, 86, 89, 90 & 91

89 ATLASTA NIGHT HAWK 34'08

MALE SJH 34U 1462066 APRIL 04 2008

VERMILION DATELINE 7078 NHF AMF
REMITALL NIGHTHAWK 37N 1171920
 DIAMOND D EVERA 073G

CONNELLY DATELINE
 VERMILION BLACKBIRD 5044
 LEACHMAN RIGHT TIME
 EVERA OF G G 73X

GRANDVIEW WOMACK DIRECT
VCF RUBY 34R 1282371
 SWENCO TIBBIE 4M

B/R NEW DESIGN 036 NHF AMF
 MENG S MISS SKYMERE 78B
 V D A R LUCYS BOY NHF AMF
 GREENBUSH TIBBIE 34K

ACTUAL BW	ADJ. 205D	EPDS					
		BW	WW	YW	MILK	TM	YG
104	698	+7.0 32%	+52 23%	+94 15%	+20 12%	+46	+42 15%

91 ATLASTA NIGHT HAWK 43'08

MALE SJH 43U 1462053 APRIL 13 2008

VERMILION DATELINE 7078 NHF AMF
REMITALL NIGHTHAWK 37N 1171920
 DIAMOND D EVERA 073G

CONNELLY DATELINE
 VERMILION BLACKBIRD 5044
 LEACHMAN RIGHT TIME
 EVERA OF G G 73X

WK ROCKER
PERRYVILLE ALLURE 25M 1141304
 PERRYVILLE MAGIC ANNE 4D

O G L BATTLE CRY 427 128
 WK BLACKBIRD 2065
 KESSLERS RAINMAN 002
 PERRYVILLE MAGIC ANNE 49B

ACTUAL BW	ADJ. 205D	EPDS					
		BW	WW	YW	MILK	TM	YG
98	594	+5.1 35%	+33 25%	+71 15%	+16 13%	+33	+38 15%

90 ATLASTA NIGHT HAWK 41'08

MALE SJH 41U 1462048 APRIL 10 2008

VERMILION DATELINE 7078 NHF AMF
REMITALL NIGHTHAWK 37N 1171920
 DIAMOND D EVERA 073G

CONNELLY DATELINE
 VERMILION BLACKBIRD 5044
 LEACHMAN RIGHT TIME
 EVERA OF G G 73X

NORTHERN IMPROVEMENT 4480 GF NHF AMF
PERRYVILLE LEXUS 9M 1141298
 PERRYVILLE LEXUS 7K

TC STOCKMAN 365
 BLACKCAP OF R R 5367
 WK ROCKER
 PERRYVILLE LEXUS 53C

ACTUAL BW	ADJ. 205D	EPDS					
		BW	WW	YW	MILK	TM	YG
88	631	+2.1 35%	+39 25%	+77 15%	+19 14%	+39	+38 15%

*All Long Yearling Bulls
 & Females are to be
 picked up after the sale*

Yearling bulls may be left until
 Feb. 15/2010 but if you take them
 right after the sale \$100 per bull
 will be deducted from your invoice.

Terms for Yearling Bulls

50% Down Sale Day

50% February 15, 2010

Buyer must insure all bulls left at Atlasta
 \$2.50 per day after February 15

SATISFACTION GUARANTEED
 with our Sight Unseen Purchase Plan

Call Brian or Doug for Details

*Please join us for lunch
 before the sale
 & refreshments after*

Seriously Black Select Females

Brookmore Angus

Jack & Barb Hart
Box 1, Brookdale, MB R0K 0G0 PH: 204-476-2607

It's a pleasure to be back at the Seriously Black Female Sale and to be working with Brian & Judy Sutter. We bring to you six bred heifers which Doug Henderson has selected from our group, sired by Net Worth, Density and Objective 3J15 carrying the service of Pendleton and Pioneer. Their health work is up to date and they are safe in calf to their A.I. service.

We are looking forward to meeting and visiting with you on sale day. If you have any questions about our offering please feel free to contact us anytime at 204-476-2607 or 204-476-6696. Or email us at brookmoreangus@mts.net.

Jack & Barb



Jack & Barb



S A V Pioneer 7301



HARB Pendleton 765 J H

A

S A V PIONEER 7301

Male IMP 7301T 1481377 NHF AMF February 27 2007

SITZ TRAVELER 8180 NHF AMF
S A V FINAL ANSWER 0035 NHF AMF 1061938
S A V EMULOUS 8145

G D A R TRAVELER 71 NHF AMF
SITZ EVERELDA ENTENSE 1137
BON VIEW BANDO 598 AMF
S A V SKY EMULOUS 2124

BOYD NEW DAY 8005 NHF AMF
S A V BLACKBIRD 5297 15108071
S A V BLACKBIRD 1082

A A R NEW TREND
S V F FOREVER LADY 57D
S A F 598 BANDO 5175 AMF
S A V BLACKBIRD 4036

EPDs: BW: +0.6 34% WW: +66 25% YW: +114 25% Milk: +30 18% SC: +2.21 94%

B

HARB PENDLETON 765 J H

Male IMP 765R 1471747 NHF AMF February 7 2005

SITZ TRAVELER 8180 NHF AMF
S A V FINAL ANSWER 0035 NHF AMF 1061938
S A V EMULOUS 8145

G D A R TRAVELER 71 NHF AMF
SITZ EVERELDA ENTENSE 1137
BON VIEW BANDO 598 AMF
S A V SKY EMULOUS 2124

H A R B HIGH PLAINS 975 JH AMF NHF
H A R B BLACK LADY 375 J H US14611224
H A R B BLACK LADY 073 J H

SITZ ALLIANCE 6595 AMF NHF
JUANADA ERICA 9024 H A R B
H A R B CINCHA 829 AMF
H A R B BLACK LADY G67 J H

EPDs: BW: -3.6 79% WW: +94 69% YW: +139 66% Milk: +27 19% SC: +1.42 67%

Seriously Black Select Females



Quaker Hill Objective 3J15 - Sire of Lots 101 & 102

101 BROOKMORE ENCHANTRESS 8U

Female JVJ 8U 1441564 January 08 2008

S S OBJECTIVE T510 OT26 NHF AMF
QUAKER HILL OBJECTIVE 3J15 NHF AMF 1385921
 QUAKER HILL QUEEN 1L4 NHF AMF

S S TRAVELER 6807 T510 AMF
 S S MISS RITA R011 7R8 AMF
 BW/QHF BLACKCAP LAD
 ANKONY QUEEN Q H F R981

TC FOREMAN 016
BROOKMORE ENCHANTRESS 175S 1345658
 BROOKMORE ENCHANTRESS 190H

CONNELY FOREFRONT NHF AMF
 TC PRIDE 8067
 EBON HILL EXTRA GOLD 31'95
 BROOKMORE ENCHANTRESS 14B

BW: 70 lbs. Adj. 205D: 659 lbs. Adj. 365D: 959 lbs.

EPDs: BW: +3.1 35% WW: +63 26% YW: +104 26% Milk: +22 13% TM: +54 YG: +41 26%

A daughter of the popular Genex performance sire, Quaker Hill Objective 3J15, whose weaning weight and yearling weight EPDs are in the top 1% for the breed and his milk is in the top 20%. This bull's ribeye EPD is in the top 1% and he has great carcass numbers.

The service sire SAV Pioneer offers great calving ease, performance carcass and milk EPDs.

Bred A.I.: April 10, 2009 to SAV Pioneer 7301 -1481377-. Preg checked safe in calf on Sept 29.



Lot 102 - Brookmore Lady Jane 18U

102 BROOKMORE LADY JANE 18U

Female JVJ 18U 1441569 January 09 2008

S S OBJECTIVE T510 OT26 NHF AMF
QUAKER HILL OBJECTIVE 3J15 NHF AMF 1385921
 QUAKER HILL QUEEN 1L4 NHF AMF

S S TRAVELER 6807 T510 AMF
 S S MISS RITA R011 7R8 AMF
 BW/QHF BLACKCAP LAD
 ANKONY QUEEN Q H F R981

S A F 598 BANDO 5175 AMF
BROOKMORE LADYJANE 183S 1345853
 BROOKMORE LADY JANE 86N

BON VIEW BANDO 598 AMF
 S A F ROYAL LASS 1002
 PF 7215 AVENGER 0232
 BROOKMORE LADY JANE 198K

BW: 72 lbs. Adj. 205D: 639 lbs. Adj. 365D: 900 lbs.

EPDs: BW: +3.8 35% WW: +60 26% YW: +102 26% Milk: +29 13% TM: +59 YG: +42 26%

Brookmore Lady Jane 18U is the second of the two excellent daughters of Objective. We think you will like their width and depth of body, they look very broody, and both these Objective heifers represent two generations of top Genex sires. Note this heifer is bred to the low birth to high growth Pendleton.

Bred A.I.: April 10, 2009 to HARB Pendleton 756 JH -1471747- Preg checked safe in calf on Sept 29.



S A V Net Worth 4200 - Sire of Lots 103 & 104

103 BROOKMORE RUBY 81U

Female JVJ 81U 1441345 January 22 2008

S A V 8180 TRAVELER 004 NHF AMF
S A V NET WORTH 4200 NHF AMF 1309743
 S A V MAY 2410

SITZ TRAVELER 8180 NHF AMF
 BOYD FOREVER LADY 8003
 S A F 598 BANDO 5175 AMF
 S A V MAY 6269

COLDSTREAM BONNIE DOON 29H
MADSEN'S RUBY 17M 1094469
 BROOKMORE RUBY 47H

TC STOCKMAN 365
 COLDSTREAM BONNIE LASS 29Y
 EBON HILL EQUALIZER 49'96
 BROOKMORE RUBY 86B

BW: 80 lbs. Adj. 205D: 564 lbs. Adj. 365D: 844 lbs.

EPDs: BW: +2.9 36% WW: +40 26% YW: +74 25% Milk: +25 12% TM: +45 YG: +34 25%

There are two superb Net Worth daughters in this Brookmore consignment. Net Worth is very highly regarded for his ability to sire overall mass of muscle, performance and eye appeal. These cattle are in a league of their own.

Net Worth ranks in the top 10% of the breed for weaning weight, yearling weight, milk, carcass weight and ribeye.

Bred A.I.: April 10, 2009 to HARB Pendleton 756 JH -1471747- Preg checked safe in calf on Sept 29.

Seriously Black Select Females

104 BROOKMORE ELLEN 192U

Female JVJ 192U 1441466 February 08 2008

S A V 8180 TRAVELER 004 NHF AMF
S A V 004 DENSITY 4336 NHF AMF 1266311
S A V MAY 7238

SITZ TRAVELER 8180 NHF AMF
BOYD FOREVER LADY 8003
LEACHMAN RIGHT TIME
S A R PROSPECTOR MAY 9124

PF 7215 AVENGER 0232
BROOKMORE ELLEN 180P 1212000
BROOKMORE ELLEN 133G

WK APPEAL
ALGOMA GOLDEN SUMMER T112
EARLY SUNSET EXTRA 56B
BROOKMORE ELLEN 110B

BW: 72 lbs. Adj. 205D: 550 lbs. Adj. 365D: 771 lbs.
EPDs: BW: +3.9 35% WW: +43 26% YW: +77 26% Milk: +21 15% TM: +43 YG: +34 26%

The two year old Net Worth daughters at Schaff Angus Valley weaned off the heaviest group of bull calves of all the two year olds there. These are highly productive females.

Note the dam here is a daughter of the great old Scotchcap perhaps Power Play's most famous son.

Bred A.I.: May 3, 2009 to SAV Pioneer 7301 -1481377- Preg checked safe in calf on Sept 29.



Lot 104 - Brookmore Ellen 192U

105 BROOKMORE ERICETTE 161U

Female JVJ 161U 1441277 February 03 2008

S A V 8180 TRAVELER 004 NHF AMF
S A V NET WORTH 4200 NHF AMF 1309743
S A V MAY 2410

SITZ TRAVELER 8180 NHF AMF
BOYD FOREVER LADY 8003
S A F 598 BANDO 5175 AMF
S A V MAY 6269

SCOTCH CAP NHF AMF
MVF ERICETTE 62J 983681
OLE SASKALTA ERICETTE 457D

P S POWER PLAY
HOFF BAND 07 OF S C 509
JOHNSTON 2100 TRADITION 485Y
ERICETTE OLE SASKALTA 97A

BW: 92 lbs. Adj. 205D: 637 lbs. Adj. 365D: 920 lbs.
EPDs: BW: +5.2 36% WW: +47 27% YW: +90 26% Milk: +22 13% TM: +46 YG: +44 26%

Those of you who were at the sale last year will remember the great daughters of Density that Jack and Barb consigned; well here are two more Density daughters from the top of their replacement pen. These females make awesome cows with good milk and excellent udders.

Bred A.I.: April 10, 2009 to HARB Pendleton 765 JH -1471747- Preg checked safe in calf on Sept 29.



Lot 105 - Brookmore Ericette 161U

106 BROOKMORE HEROINE 229U

Female JVJ 229U 1441487 February 15 2008

S A V 8180 TRAVELER 004 NHF AMF
S A V 004 DENSITY 4336 NHF AMF 1266311
S A V MAY 7238

SITZ TRAVELER 8180 NHF AMF
BOYD FOREVER LADY 8003
LEACHMAN RIGHT TIME
S A R PROSPECTOR MAY 9124

S A NEUTRON 377 NHF AMF
BROOKMORE HEROINE 81R 1293182
BROOKMORE HEROINE 90G

S A F NEUTRON NHF AMF
S A QUEEN SUSAN 102
EARLY SUNSET EXTRA 56B
BROOKMORE HEROINE 26C

BW: 90 lbs. Adj. 205D: 635 lbs. Adj. 365D: 889 lbs.
EPDs: BW: +5.9 35% WW: +54 26% YW: +93 26% Milk: +19 15% TM: +46 YG: +39 26%

Brookmore Heroine 229U is typical of the powerful maternal, broody daughters of Density, this should be of no surprise combining the bloodlines of Traveler 004 and Leachman Right Time. This group of bred heifers consigned by Brookmore was selected right off the very top of Jack and Barb's replacement pen.

Bred A.I.: HARB Pendleton 765 JH -1471747- on April 10, 2009. Preg checked safe in calf on Sept 29.



Lot 106 - Brookmore Heroine 229U

Seriously Black Select Females

Cooke Livestock

Grant & Sharon Cooke - Krista & Grant Ball
Box 127, Blackie, AB T0L 0J0

PH: 403-684-3377 Cell: 403-333-5235 403-601-1613 www.cookelivestock.com



Grant & Sharon



Krista & Grant

Welcome to the 2010 Seriously Black Select Sale. It is always a pleasure to be part of this sale. Many thanks to Brian & Judy Sutter for being our hosts.

This year we have brought the top end of our heifers to the sale. We believe that you'll appreciate the strong, proven genetics and excellent performance data.

In mid October we brought the heifers out of the pasture and took photos of them - unclipped. They have lots of hair. All five heifers are very thick and stout. They have sound feet and excellent maternal traits and EPDs. Any of these heifers will compliment a variety of breeding programs. In times like these it pays to feed the best and most efficient cows.

Thank you to our past buyers and it is always a pleasure to meet new Angus people.

We look forward to seeing you on December 12th. The conversation will be lively, the food will be fantastic and the cattle will represent the top genetics of the Canadian cattle industry.

Grant & Sharon
Krista & Grant



Lot 107 - CCL Neonia 26W

107 CCL NEONIA 26W

Female CGL 26W 1499678 January 17 2009

REMITALL NIGHTHAWK 37N
REMITALL H RACHIS 21R NHF AMF 1274555
HENDERSON MISSIE 32'02

S A V 004 PREDOMINANT 4438 NHF AMF
REMITALL NEONIA 519T 1398703
REMITALL NEONIA 36N

VERMILION DATELINE 7078 NHF AMF
DIAMOND D EVERA 073G
O G L BATTLE CRY 427 128
HENDERSON MISSIE 2'97

S A V 8180 TRAVELER 004 NHF AMF
S A V EMBLYNETTE 1182
REMITALL LOGAN 11L
REMITALL NEONIA 33L

BW: 80 lbs. Adj. 205D: 786 lbs.

EPDs: BW: +3.8 5% WW: +54 5% YW: +111 5% Milk: +16 5% TM: +43 YG: +57 5%

This stunning Rachis daughter has been a standout from birth; her dam from the famous Remitall Neonia cow family was a standout in the giant Remitall Dispersal Sale, a daughter of the very popular Predominant. These daughters of the 2007 Farmfair International Supreme Champion Remitall H Rachis 21R have it all when it comes to performance and eye appeal.

Seriously Black Select Females



Lot 109 - CCL Blacky 24W



Lot 111 - CCL Bardella 50W

108 CCL BLACKBIRD 13W

Female CGL 13W 1499668 January 13 2009

W C C SPECIAL DESIGN L309 NHF AMF
BROOKMORE SPECIAL DESIGN 178S 1345654
BROOKMORE BELLA 119H

ROTH REGULATOR 0405
JUSTAMERE 0405 BLACKBIRD 348N 1184526
RR ENVIOUS BLACKBIRD 9982

BON VIEW NEW DESIGN 878 NHF AMF
N BAR PRIMROSE 2424
EBON HILL STOCKMAN 55'95
BROOKMORE BELLA 89B

GDAR SVF RUSS 184B
BEAR MTN LADY ERALINE 302
LEACHMAN AXIOM
R R ENVIOUS BLACKBIRD 6454

BW: 87 lbs. Adj. 205D: 685 lbs.
EPDs: BW: I +4.0 5% WW: I +43 5% YW: I +68 5% Milk: I +22 5% TM: I +44 YG: I +25 5%

Brookmore Special Design 178S was selected from the 2007 Cattlemans Connection Bull Sale, he stood out as a bull with lots of breed character, thick, correct, lots of testical and an abundance of great hair. He has certainly passed this on to his offspring for he has one of the best groups of calves ever born at Cooke Livestock.

The dam of CGL 13W, Justamere Blackbird 348N has consistently produced outstanding heifers for Cooke Livestock that have remained in the herd.

109 CCL BLACKY 24W

Female CGL 24W 1499677 January 17 2009

W C C SPECIAL DESIGN L309 NHF AMF
BROOKMORE SPECIAL DESIGN 178S 1345654
BROOKMORE BELLA 119H

C&D 455 ROCKETT
CROWFOOT BLACKY 1610L 1051495
C H BLACKBIRD 9604

BON VIEW NEW DESIGN 878 NHF AMF
N BAR PRIMROSE 2424
EBON HILL STOCKMAN 55'95
BROOKMORE BELLA 89B

D H D TRAVELER 6807 NHF AMF
V F 722 LANDMARK FREDIA 5127
CELEBRATION CF 280 426
C H BLACKBIRD C5960

BW: 98 lbs. Adj. 205D: 674 lbs.
EPDs: BW: I +2.1 5% WW: I +31 5% YW: I +52 5% Milk: I +23 5% TM: I +38 YG: I +22 5%

Check out this great female, her dam is the mother of Cooke's famous Crowfoot 3770N bull that has left great daughters with ideal udders. Cooke's have an older sister in the herd that was a standout heifer calf last year. Lots of milk in this wonderful tabulation.

110 CCL RUTH 28W

Female CGL 28W 1499680 January 19 2009

W C C SPECIAL DESIGN L309 NHF AMF
BROOKMORE SPECIAL DESIGN 178S 1345654
BROOKMORE BELLA 119H

HF WALKER 107E
RIVERCREST RUTH 40J 987326
RIVERCREST RUTH 13A

BON VIEW NEW DESIGN 878 NHF AMF
N BAR PRIMROSE 2424
EBON HILL STOCKMAN 55'95
BROOKMORE BELLA 89B

HF WALK-ON 14C
R F ROSEBUD 116Y
BAR DOUBLE M RAMBO 12
RIVERCREST RUTH 76P

BW: 88 lbs. Adj. 205D: 691 lbs.
EPDs: BW: I +2.7 5% WW: I +33 5% YW: I +50 5% Milk: I +17 5% TM: I +33 YG: I +18 5%

These beautiful Brookmore Special Design 178S daughters are like peas in a pod, very uniform with lots of style and their brothers are a very impressive group.

They possess character, style, correctness and great hair combining all this with excellent EPDs and I think you have a complete package.

111 CCL BARDELLA 50W

Female CGL 50W 1499699 January 29 2009

W C C SPECIAL DESIGN L309 NHF AMF
BROOKMORE SPECIAL DESIGN 178S 1345654
BROOKMORE BELLA 119H

CROWFOOT 3770N
CCL BARDELLA 34R 1279604
LLB BARDELLA 331M

BON VIEW NEW DESIGN 878 NHF AMF
N BAR PRIMROSE 2424
EBON HILL STOCKMAN 55'95
BROOKMORE BELLA 89B

O C C HUNTER 928H
CROWFOOT BLACKY 1610L
EBON HILL VENTURE 48'2000
BAR DOUBLE M BARDELLA 55F

BW: 86 lbs. Adj. 205D: 722 lbs.
EPDs: BW: I +2.2 5% WW: I +30 5% YW: I +48 5% Milk: I +16 5% TM: I +31 YG: I +18 5%

Out of one of those very impressive Crowfoot 3770N daughters that Cooke Livestock have become known for. WCC Special Design L 309 was a featured Genex bull, his daughters were very special with great udder quality and flawless structure for which N Bar Primrose 2424 was noted.

These Special Design females are very attractive.

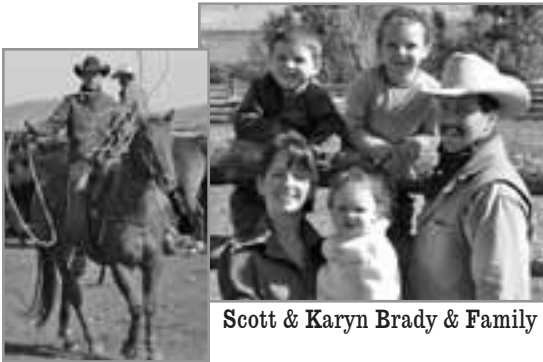
Seriously Black Select Females

KFC Farms Ltd.

Ken & Judy Friesen – Darryl, Scott & Cameron
 30125 Spallin Ave., Abbotsford, BC V4X 2A5 PH: 604-856-3900
 Mgr. Scott & Karyn Brady – Abbergayle, Gavin & Elizabeth
 Office: 250-257-9315 Fax: 250-457-9317 Home: 250-457-9319
 Email: scott@kfcfarms.com Website: www.kfcfarms.com



Ken, Judy, Darryl, Scott & Cameron



Scott & Karyn Brady & Family

Curtis Smith

We would like to thank the Sutters for giving us the opportunity once again to showcase our top Angus genetics.

We are offering four bred heifers that have come straight from our AI program. This includes two daughters of B A R EXT TRAVELER 205 as well as a daughter by SITZ ALLIANCE 6595 and one heifer by ROYAL TRAVELER 4129. These females are carrying service to CONNEALY FREIGHTLINER and CRA BEXTOR 872 5205 608. These are very popular, proven sires and currently FREIGHTLINER semen is unavailable. This is a chance to infuse some highly proven efficient maternal genetics into your herd. During the past several years while building a cow herd, we have paid close attention to traits that will directly affect our customers as well as our own herds' bottom line. To achieve this, the genetics selected for must reduce labor costs and enhance efficiency to increase profitability. These genetics can do this for you. If you are interested in the cattle or can't make it to the sale give us a call. We look forward to seeing you on Dec. 12th.

Scott Brady
 KFC Farms Ltd.

C CONNEALY FREIGHTLINER

Male IMP 7549G 964749 NHF AMF March 15 1997

TEHAMA BANDO 155 NHF AMF
BON VIEW BANDO 598 AMF 780142
 BON VIEW DORA 56

BAND 234 OF IDEAL 3163
 TEHAMA BLACKCAP G373
 VOLTAGE HK K142
 BON VIEW DORA 254

NICHOLS HEAVY DUTY X100
JOANA ERICA OF CONANGA 12015525
 JARNE ERICA OF CONANGA

NICHOLS SUPER SYSTEMS R43
 NICHOLS MISS BARBARA U238
 SCOTCH CAP NHF AMF
 JARA ERICA OF CONANGA

EPDs: BW: +1.8 97% WW: +47 96% YW: +91 95%
 Milk: +19 92% TM: +43 YG: +44 95% SC: +2.21 94%

D C R A BEXTOR 872 5205 608

Male IMP 872H 1167526 NHF AMF February 08 1998

N BAR EMULATION EXT NHF AMF
B A R EXT TRAVELER 205 NHF AMF 979739
 B A R QUEEN TRAVELER 3015

EMULATION N BAR 5522
 N BAR PRIMROSE 2424
 D H D TRAVELER 6807 NHF AMF
 MAGIC QUEEN 963

G A R SLEEP EASY 1009 NHF AMF
CRA LADY JAYE 608 498 S EASY 12559297
 HHF 917 LADY 975 498

TEHAMA BANDO 155 NHF AMF
 BLACKLASS G A R 103
 HHF TRAVELER 688 917
 HHF ESSO LADY 650 975

EPDs: BW: +1.5 95% WW: +51 93% YW: +95 91%
 Milk: +32 80% TM: +58 YG: +44 91% SC: +0.03 90%



Lot 112 - KFC NBA 4129 Luna 801U

112 KFC NBA 4129 LUNA 801U

Female KFC 801U 1446067 February 17 2008

ALBERDA TRAVELER 416 NHF AMF
ROYAL TRAVELER DRCC 4129P 1239744
 RALLY KATINKA 229B

D H D TRAVELER 6807 NHF AMF
 ALBERDA QUEEN KIMBERLY 222
 N BAR EMULATION EXT NHF AMF
 HARMONY HILL KATINKA 229

BLACK GEM RAIN AGAIN 340N
KFC 340N LUNA 6101 1320786
 BLACK GEM LUNA 144P

G D A R RAINMAKER 340
 LANDMARK FREDA 911
 BLACK GEM TARGET 23L
 BLACK GEM LUNA 9144M

BW: 70 lbs. Adj. 205D: 633 lbs.
 EPDs: BW: +0.9 33% WW: +37 21% YW: +71 12% Milk: +22 9% TM: +41 YG: +35 12%

This maternally bred feature is backed by breed legends Alberta Traveler 416, N BAR Emulation EXT and GDAR Rainmaker 340. She ranks in the top 11% of the breed for BW EPD while maintaining a balanced performance profile. 801U boasted a weaning ratio of 104 and carries service to the Genex/CRI sire Connealy Freightliner. Bred AI: April 9, 2009 to Connealy Freightliner -964749- Exposed: April 24 to July 30, 2009 KFC Krugerrand 7448T - 1388052-

Seriously Black Select Females

113 KFC 205 DAWN 8503U

Female KFC 8503U 1437674 January 01 2008

N BAR EMULATION EXT NHF AMF
B A R EXT TRAVELER 205 NHF AMF 979739
 B A R QUEEN TRAVELER 3015

EMULATION N BAR 5522
 N BAR PRIMROSE 2424
 D H D TRAVELER 6807 NHF AMF
 MAGIC QUEEN 963

ATLASTA A. STOCKMAN 14K
KFC 14K DAWN 6215 1320839
 SMYTH BARBARA 11D

TC STOCKMAN 365
 MLA ERICA 6'94
 BRYMOR BRUTUS 2B
 BRYMOR DELTA DAWN 1A

BW: 70 lbs. Adj. 205D: 640 lbs. Adj. 365D: 767 lbs.
 EPDs: BW: +0.8 33% WW: +35 23% YW: +59 22% Milk: +27 18% TM: +45 YG: +24 22%

Here is an own daughter of the maternal great BAR EXT Traveler 205 backed by the Dawn cow family. This heifer posted a WW ratio of 105, as well as a REA ratio of 108 and ranks in the top 5% for Milk EPD, as well as the top 10% for BW. A paternal sister to this female sold for \$6000 to Fraser Ireland at the 2008 Seriously Black Sale. 8503 carries service to the highly sought after Connealy Freightliner.

Bred AI: April 9, 2009 to Connealy Freightliner -964749-
 Exposed: April 24 to July 30, 2009 KFC Krugerrand 7448T - 1388052-



Lot 113 - KFC 205 Dawn 8503U

114 KFC 205 FAY 8509U

Female KFC 8509U 1437678 January 02 2008

N BAR EMULATION EXT NHF AMF
B A R EXT TRAVELER 205 NHF AMF 979739
 B A R QUEEN TRAVELER 3015

EMULATION N BAR 5522
 N BAR PRIMROSE 2424
 D H D TRAVELER 6807 NHF AMF
 MAGIC QUEEN 963

JUSTAMERE 1118 CASH 665P
KFC 665P FAY 6128 1320804
 JUSTAMERE 7704 FAY 829L

EXAR BIG TIMBER 1118
 REMITALL KEEPSAKE 143L
 EXAR SHOW ME THE MONEY
 JUSTA 088 FAY 818C

BW: 61 lbs. Adj. 205D: 589 lbs. Adj. 365D: 793 lbs.
 EPDs: BW: +0.0 35% WW: +41 26% YW: +74 25% Milk: +27 18% TM: +48 YG: +33 25%

This sale feature is a granddaughter to Justamere 7704 Fay 829L who produced the great show heifer Justamere 0405 Fay 669P. Her pedigree is loaded with bred greats like EXT. 6807, CASH and SHOW ME THE MONEY. 8509 ultra sound scanned a 5.58% IMF and posted a REA ratio of 108. She ranks in the top 5% of the breed for both BW and Milk EPDs. 8509U is due to calve Jan 17th, to the highly proven, maternal sire Connealy Freightliner.

Bred AI: April 9, 2009 to Connealy Freightliner -964749-
 Exposed: April 24 to July 30, 2009 KFC Krugerrand 7448T - 1388052-



Lot 114 - KFC 205 Fay 8509U

115 KFC 6595 MARY 8554U

Female KFC 8554U 1437700 February 02 2008

SITZ TRAVELER 8180 NHF AMF
SITZ ALLIANCE 6595 NHF AMF 1036949
 SITZ BARBARAMERE JET 2698

G D A R TRAVELER 71 NHF AMF
 SITZ EVERELDA INTENSE 1137
 3 BAR SPIKE 1766
 SITZ BARAMERE JET 155

JUSTAMERE NEW DEAL 726L
JUSTAMERE 726L MARY 601P 1222921
 BRANDEIS PRIDE 2Z

BON VIEW NEW DESIGN 1407 NHF AMF
 R R ENVIOUS BLACKBIRD 8417
 DMM TOP GUN 46X
 BRANDEIS PRIDE 4X

BW: 77 lbs. Adj. 205D: 626 lbs. Adj. 365D: 782 lbs.
 EPDs: BW: +2.4 35% WW: +45 26% YW: +74 25% Milk: +25 20% TM: +48 YG: +29 25%

A special sale feature backed by the Pathfinder sires Sitz Alliance 6595 and Bon View New Design 1407. 8554U posted ratios of 101 for WW, 114 for YW, 131 for IMF and 141 for REA, she also ranks in the top 4% of the breed for Milk EPD, the top 6% for REA EPD and the top 8% for IMF EPD. This heifer scanned a very high 7.98% IMF and ranked 2nd among 47 in her contemporary group. She has been nicknamed Tank by our herdsman Curtis due to her extra depth and thickness of body. This heifer definitely has the phenotype and pedigree to become a future donor cow in any leading program. 8554U is mated to the Select Sires Feature CRA Bextor 872 5205 608.

Bred AI: April 9, 2009 to CRA Bextor 872 5205 608 -1167526-
 Exposed: April 24 to July 30, 2009 KFC Krugerrand 7448T - 1388052-



Lot 115 - KFC 6595 Mary 8554U

Seriously Black Select Females

Rattray Livestock

Gord & Laurie Rattray
 Box 3, Blackfoot, AB T0B 0L0
 Home: 780-875-6271 Cell: 403-318-3154
 email: gordrattray@telus.net



Gord & Laurie

Welcome . . .

2009 has brought us one of the most promising set of calves yet here at Rattray Livestock. As we are limited in the number of females we can keep, we are able to offer some of our very top cattle to you. We truly enjoy striving to produce the best, utilizing top genetics and embryo transfer, and are very proud of our foundation cows, which are the basis for producing the best calves. We focus on breeding cattle with a balance of qualities desirable to both the purebred breeder and commercial cattle producer. Strong maternal traits, soundness, performance and good disposition are important qualities we strive to bring to the industry. We are pleased to offer you what we feel are some exceptional genetics to add to your program. We look forward to your appraisals of our cattle and welcome any comments or questions you might have. Please feel free to stop by the farm any time if you are in the area.



Lot 116 - GRRR 0699 Oakleaf 12W

116 GRRR 0699 OAKLEAF 12W

Female GRRR 12W 1486939 January 14 2009

S A F 598 BANDO 5175 AMF
S A V 5175 BANDO 0699 NHF AMF 1309261
 L L A GEORGINA 419

RONAN ACHIEVER 208K
RONAN OAKLEAF 35P 1200837
 RONAN OAKLEAF 23K

BON VIEW BANDO 598 AMF
 S A F ROYAL LASS 1002
 G A R SLEEP EASY 1009 NHF AMF
 LYONS GEORGINA 2165

CEDAR HILLS ACHIEVER 6150
 RONAN EILEEN 89C
 PAPA EQUATOR 2928 NHF AMF
 RONAN OAKLEAF 102U

BW: 84 lbs.

EPDs: BW: I +5.2 5% WW: I +44 5% YW: I +82 5% Milk: I +12 5% TM: I +34 YG: I +38 5%

Sired by the performance bull, Bando 0699. 12W's full sister, GRRR 2T weaned her first calf at 952 lbs. Sept 5 at 232 days! 12W has the potential to outperform her sister. She weaned off our heaviest heifer 856 lbs.! Deep, thick, hair, sound, and larger framed than average. She's the kind that will produce herd bulls or foundation females. You won't go wrong with her.



Lot 117 - GRRR FA Ruby 19W

117 GRRR FA RUBY 19W

Female GRRR 19W 1486941 January 26 2009

SITZ TRAVELER 8180 NHF AMF
S A V FINAL ANSWER 0035 NHF AMF 1061938
 S A V EMULOUS 8145

HI DIAMOND BLACKSTONE 4L
RIVERCREST RUBY CSP 16N 1154987
 RIVERCREST RUBY 7H

G D A R TRAVELER 71 NHF AMF
 SITZ EVERELDA ENTENSE 1137
 BON VIEW BANDO 598 AMF
 S A V SKY EMULOUS 2124

LEACHMAN SAUGHATCHEE 3000C NHF AMF
 LOMA LANES BLACKBIRD 24A
 BCC EILEENMERE LAD 215
 RIVERCREST RUBY 24D

BW: 84 lbs.

EPDs: BW: I +1.5 5% WW: I +48 5% YW: I +82 5% Milk: I +21 5% TM: I +45 YG: I +35 5%

Stout made Final Answer. Final Answer-Gridmaker-Saugahatchee, more maternal power than you'll find in any female. Take a good look at this exceptional calf, she's the type that will produce the easy fleshing stout calves.

Seriously Black Select Females

Atlasta Angus



Lot 118A - Atlasta Erica 126U



Lot 119A - Atlasta Erica 17U

Selling Choice

118A ATLASTA ERICA 126U

Female JBS 126U 1476204 January 26 2008

GDAR SVF RUSS 184B
SVF SIEBRINGS FOREVER RUSS NHF AMF 1036951
GDAR SVF FOREVER LADY 214D

G D A R EXECUTIVE 727 NHF AMF
G D A R FOREVER LADY 719
TRAVELER 124 G D A R
G D A R FOREVER LADY 718

B/R NEW FRONTIER 095 NHF AMF
ATLASTA ERICA 8P 1236640
ATLASTA ERICA 57H

B/R NEW DESIGN 036 NHF AMF
WHITE FENCE PRIDE H1
WINDOVER MATRIX 14F
ATLASTA GIDGET 5'96

BW: 92 lbs. Adj. 205D: 632 lbs.
EPDs: BW: +4.5 34% WW: +45 25% YW: +88 17% Milk: +23 20% TM: +46 YG: +43 17%

Exposed: March 30 to May 15, 2009 to HF Kodiak 57U -1447442-.
May 15 to July 3, 2009 to Atlasta BB Traveler 6807 047T -1417947-.
July 3 to August 25, 2009 to BB Alliance 40S -1362471- (Due Mid Feb)

118B ATLASTA WENDY 27U

Female JBS 27U 1473678 January 08 2008

G T MAXIMUM NHF AMF
BASIN MAX 602C NHF AMF 942987
BASIN ELINE ERICA 315U

SCOTCH CAP NHF AMF
GT MISS TRAVELER 58
G D A R RAINMAKER 340
BASIN ELINE ERICA 1313

MACC INDIAN NATION 66F
ATLASTA WENDY 37H 918574
MLA WENDY 3'95

HF JUST CRUISIN' 5C
PEGGY OF ONEILL 2
WHS PLAYBOY 5B
MLA WENDY 20'87

BW: 96 lbs. Adj. 205D: 600 lbs.
EPDs: BW: +2.9 36% WW: +33 27% YW: +66 15% Milk: +14 21% TM: +31 YG: +33 15%

Exposed: March 30 to July 3, 2009 to Remington Final Answer 209T -1419050-.
July 3 to August 25, 2009 to BB Alliance 40S -1362471- (Due mid Jan.)

This stylish pair of bred heifers come from two can't miss cow families at Atlasta. JBS 126U's dam is an excellent B/R New Frontier daughter and grandam JBS 57H is one of the best ever to walk here. Her sire, SVF Siebrings Forever Russ leaves attractive females with added length and depth, good udders and great dispositions. JBS 27U maternal sister was the \$7000 top selling female in last year's sale to Colin & Wendy Swarback. Their dam JBS 37H is a picture perfect Angus matriarch. I can't say enough about her. JBS 27U's sire is trait leader, Basin Max 602C, known for superior females, lots of performance and superior carcass numbers.

Two outstanding feature females with unlimited potential.

Selling Choice

119A ATLASTA ERICA 17U

Female JBS 17U 1473799 January 06 2008

B/R NEW DESIGN 036 NHF AMF
B/R NEW FRONTIER 095 NHF AMF 1115831
WHITE FENCE PRIDE H1

V D A R NEW TREND 315 NHF AMF
B/R BLACKCAP EMPRESS 76
CONNEALY DATELINE
PLEASANT PILL OF CONANGA

W V F HB ATLANTIC NATL MERIT
ATLASTA ELLEN ERICA 65P 1236598
MLA ELLEN ERICA 36'93

L F NEW TREND 4100 NHF AMF
L L A GEORGINA 419
MLA CRUSADER 2Z
MLA ELLEN ERICA 8'80

BW: 90 lbs. Adj. 205D: 582 lbs.
EPDs: BW: +3.7 36% WW: +40 26% YW: +72 17% Milk: +18 21% TM: +38 YG: +32 17%

Exposed: March 30 to July 3, 2009 to Remington Final Answer 209T -1419050-.
July 3 to August 25, 2009 to BB Alliance 40S -1362471- (Due mid Jan.)

119B ATLASTA MAXINE 88U

Female JBS 88U 1473801 January 19 2008

B/R NEW DESIGN 036 NHF AMF
B/R NEW FRONTIER 095 NHF AMF 1115831
WHITE FENCE PRIDE H1

V D A R NEW TREND 315 NHF AMF
B/R BLACKCAP EMPRESS 76
CONNEALY DATELINE
PLEASANT PILL OF CONANGA

PINE DRIVE BIG SKY NHF AMF
BARNETT MAXINE 112P 1282423
F V MAXINE 112C

LE MAR EILEENMERE LAD 549
BENLOCK BLACKCAP 108K
G T MAXIMUM NHF AMF
DOUBLE AA GLORY 12'91

BW: 92 lbs. Adj. 205D: 617 lbs.
EPDs: BW: +4.7 34% WW: +41 25% YW: +73 19% Milk: +18 21% TM: +39 YG: +32 19%

Exposed: March 30 to July 3, 2009 to Remington Final Answer 209T -1419050-.
July 3 to August 25, 2009 to BB Alliance 40S -1362471- (Due mid Feb.)

A sweet pair of paternal sisters sired by B/R New Frontier 095, known for superior females with excellent udders and performance. Both of their moderately framed young dams have generations of trait leaders on the top of their pedigrees, and solid consistent numbers on their dams side. JBS 17U traces back for generations, plus thirty years here. Outstanding proven genetics and performance give these eye appealing bred, front pasture status! Both carry service to Remington Final Answer 209T.

Seriously Black Select Females



Lot 120A - Atlasta Wendy Jill 172U



Remitall Pilot 103P

Moderately framed, with lots of volume and capacity describes these three classy females sired by Remitall Pilot 103P. All his progeny have lower birth weights along with some added meat and muscle. JBS 172U's dam is a stylish daughter of the breed legend, Oscar 711. JBS 179U and 211U's dams are consistent, sound mamas with good udders and feet. These three well balanced females will be easy fleshing with some extra depth. Excellent birth weight to yearling weight numbers in this group.

Selling Choice

120A ATLASTA WENDY JILL 172U

Female JBS 172U 1473727 February 17 2008

REMITALL MERCEDES 146M
REMITALL PILOT 103P 1227174
HAPPYVALE NEONIA 27E

SITZ ALLIANCE 6595 NHF AMF
HF TIBBIE 118J
BALDRIDGE ALFALFA 951
HAPPYVALE BLACK NEONIA 4X

G D A R OSCAR 711 NHF AMF
ATLASTA WENDY JILL 125M 1131065
MLA WENDY JILL 2F'96

BALDRIDGE OSCAR
L T FOREVER LADY 395 G D A R
WHS PLAYBOY 5B
MLA WENDY JILL 30'87

BW: 80 lbs. Adj. 205D: 653 lbs.
EPDs: BW: +1.9 34% WW: +36 23% YW: +63 14% Milk: +11 11% TM: +29 YG: +27 14%

Exposed: March 30 to July 3, 2009 to Atlasta BB Traveler 6807 047T - 1417947-.

July 3 to August 25, 2009 to BB Alliance 40S -1362471-. (Due late Jan.)

120B ATLASTA WENDY

Female JBS 179U 1473669 February 20 2008

REMITALL MERCEDES 146M
REMITALL PILOT 103P 1227174
HAPPYVALE NEONIA 27E

SITZ ALLIANCE 6595 NHF AMF
HF TIBBIE 118J
BALDRIDGE ALFALFA 951
HAPPYVALE BLACK NEONIA 4X

MLA KOCHIESE 55E
MLA BUFFALO GAL 55'97 887073
MLA WENDY 7'89

WHS PLAYBOY 5B
MLA ELCON 43'92
MLA SWAMPUM
MLA WENDY 7'83

BW: 80 lbs. Adj. 205D: 705 lbs.
EPDs: BW: +1.1 34% WW: +38 23% YW: +63 10% Milk: +14 10% TM: +33 YG: +25 10%

Exposed: March 30 to July 3, 2009 to Atlasta BB Traveler 6807 047T - 1417947-.

July 3 to August 25, 2009 to BB Alliance 40S -1362471-. (Due mid Feb.)

121 ATLASTA ERICA 21U

Female JBS 21U 1473737 January 07 2008

TC FREEDOM 104 AMF
HF COMMANDER 60P 1215068
DURALTA 14C ECHO 32E

CONNELLY FOREFRONT NHF AMF
T C RUBY 9095
HF WALK-ON 14C
STONEHAVEN MISS PONDEROSA 9U

DMM TRACTION 109J
ATLASTA ERICA 7N 1153323
MLA ERICA 37'93

TC STOCKMAN 365
DMM MISS ESSENCE 22B
GET-A-LONG ALAMO 132
MLA ERICA 1'89

BW: 88 lbs. Adj. 205D: 620 lbs.
EPDs: BW: +3.7 34% WW: +35 23% YW: +63 9% Milk: +18 11% TM: +36 YG: +28 9%

Exposed: March 30 to May 16, 2009 to HF Kodiak 57U -1447442-.
May 16 to July 3, 2009 to Remington Final Answer 209T -1419050-.
July 3 to August 25, 2009 to BB Alliance 40S -1362471-. (Due early Jan.)

YOUR CHOICE

5 doses of your pick of two great
TC Stockman 365 sons with the
purchase of each Atlasta female

#1 - Atlasta A. Stockman 14K -995680-

#2 - DMM Stockman 106J -985901-

Seriously Black Select Females



Lot 122A - Atlasta Wendy 157U



Lot 123A - Atlasta Black Nance 139U

Selling Choice

122A ATLASTA WENDY 157U

Female JBS 157U 1473721 February 11 2008

SVF SIEBRINGS FOREVER RUSS NHF AMF
ATLASTA FOREVER RUSS 37S 1341988
ATLASTA ERICA 34H

GDAR SVF RUSS 184B
GDAR SVF FOREVER LADY 214D
MACC INDIAN NATION 66F
MLA ELLEN ERICA 34'95

G T MAXIMUM NHF AMF
ATLASTA WENDY 19M 1169364
MLA WENDY 1'94

SCOTCH CAP NHF AMF
GT MISS TRAVELER 58
G D A R WHAM 021 NHF AMF
MLA WENDY 20'87

BW: 88 lbs. Adj. 205D: 642 lbs.
EPDs: BW: +3.2 32% WW: +44 20% YW: +79 8% Milk: +13 11% TM: +35 YG: +34 8%

Exposed: March 30 to May 16, 2009 to HF Kodiak 57U -1447442-.
May 16 to July 3, 2009 to Atlasta BB Traveler 6807 047T -1417947-.
July 3 to August 25, 2009 to BB Alliance 40S -1362471-. (Due mid Jan.)

122B ATLASTA PINE DRIVE 162U

Female JBS 162U 1473798 February 12 2008

SVF SIEBRINGS FOREVER RUSS NHF AMF
ATLASTA FOREVER RUSS 37S 1341988
ATLASTA ERICA 34H

GDAR SVF RUSS 184B
GDAR SVF FOREVER LADY 214D
MACC INDIAN NATION 66F
MLA ELLEN ERICA 34'95

PINE DRIVE BIG SKY NHF AMF
BARNETT ERROLLINE 1282421
SCA ERROLLINE 54L

LE MAR EILEENMERE LAD 549
BENLOCK BLACKCAP 108K
SCA KRUGERRAND 69G
SCA ERROLLINE 96G

BW: 85 lbs. Adj. 205D: 609 lbs.
EPDs: BW: +4.1 32% WW: +40 20% YW: +67 9% Milk: +19 11% TM: +39 YG: +27 9%

Exposed: March 30 to July 3, 2009 to Remington Final Answer 209T -1419050-.
July 3 to August 25, 2009 to BB Alliance 40S -1362471-. (Due early Feb.)

Smooth front ended, long and deep bodied describes these stylish, feminine breds. Their sire, Atlasta Forever Russ 37S has moderate BW's and top end WW's in both males and females. JBS 157U's dam is sired by carcass legend G.T. Maximum and 162U's dams sire is the immortal Pine Drive Big Sky. Tons of performance and excellent carcass numbers along with years of proven Angus genetics are bred into these two attractive front end females.

Check out these heifers sire's dam, JBS 34H. She is a dam of the Net Worth ET Bulls in our sale. All very good!

Selling Choice

123A ATLASTA BLACK NANCE 139U

Female JBS 139U 1473806 January 31 2008

JUSTAMERE 1118 CASH 665P
REMITALL SUPEREVENT 532S 1338191
KBJ ANNIE 829N

EXAR BIG TIMBER 1118
REMITALL KEEPSAKE 143L
LLB TRAVELER 297K
KBJ ANNIE 438L

SCC LONG BOW 34L
CCL BLACK NANCE 2R 1279282
BLACK NANCE OF NEEDMORE 7G

CONNELLY KINCAID
DURALTA 14C ECHO 32E
NEW PRIDE OF NEEDMORE 1E
BLACK NANCE OF NEEDMORE 41C

BW: 96 lbs. Adj. 205D: 629 lbs.
EPDs: BW: +5.6 31% WW: +49 19% YW: +80 7% Milk: +17 7% TM: +42 YG: +31 7%

Exposed: March 30 to July 3, 2009 to Atlasta BB Traveler 6807 047T -1417947-.
July 3 to August 25, 2009 to BB Alliance 40S -1362471-. (Due early Jan.)

123B ATLASTA PATRICIA 155U

Female JBS 155U 1473813 February 09 2008

JUSTAMERE 1118 CASH 665P
REMITALL SUPEREVENT 532S 1338191
KBJ ANNIE 829N

EXAR BIG TIMBER 1118
REMITALL KEEPSAKE 143L
LLB TRAVELER 297K
KBJ ANNIE 438L

VERMILION DATELINE 7078 NHF AMF
ATLASTA PATRICIA 18R 1276613
MLA PATRICIA 29'94

CONNELLY DATELINE
VERMILION BLACKBIRD 5044
MLA CRUSADER 2Z
MLA PATRICIA 24'86

BW: 85 lbs. Adj. 205D: 687 lbs.
EPDs: BW: +3.8 33% WW: +55 21% YW: +91 7% Milk: +21 8% TM: +49 YG: +36 7%

Exposed: March 30 to July 3, 2009 to Atlasta BB Traveler 6807 047T -1417947-.
July 3 to August 25, 2009 to BB Alliance 40S -1362471-. (Due mid Feb.)

Smooth front ended with some added capacity and depth describes these two well balanced heifers. Their sire, Remital Superevent 532S did a marvelous job here last year, giving us a powerful, top selling pen of bulls, top end performance and genetics bred into this pair. JBS 139U's dam is a Cooke Livestock bred young cow with some added volume and nice udders. JBS 155U descends from five generations of cows at Atlasta. Her dam is a nice daughter of the great cow maker Vermilion Dateline 7078, two very good heifers carry the service of our Traveler 6807 son.

Seriously Black Select Females



Lot 124A - Atlasta Tina 2U



Lot 125A - Atlasta BB 143U

Selling Choice

124A ATLASTA TINA 2U

Female JBS 2U 1475269 January 01 2008

LEACHMAN RIGHT TIME
REMINGTON RIGHT TIME 124R 1291957
 CRESCENT CREEK BLACKCAP 84E

N BAR EMULATION EXT NHF AMF
 LEACHMAN ERICA 0025
 RITO 8094 PRAIRIELANE 2060
 CRESCENT CREEK BLACKCAP 112A

G T MAXIMUM NHF AMF
ATLASTA TINA 24S 1342027
 ATLASTA DATELINE TINA 3J

SCOTCH CAP NHF AMF
 GT MISS TRAVELER 58
 CONNEALY DATELINE
 ATLASTA TINA 14G

BW: 80 lbs. Adj. 205D: 628 lbs.
 EPDs: BW: +3.5 32% WW: +38 21% YW: +73 10% Milk: +13 11% TM: +32 YG: +35 10%

Exposed: March 30 to July 3, 2009 to Atlasta BB Traveler 6807 047T -1417947-.
 July 3 to August 25, 2009 to BB Alliance 40S -1362471-. (Due end of Jan.)

124B ATLASTA WENDY 4U

Female JBS 4U 1475272 January 01 2008

LEACHMAN RIGHT TIME
REMINGTON RIGHT TIME 124R 1291957
 CRESCENT CREEK BLACKCAP 84E

N BAR EMULATION EXT NHF AMF
 LEACHMAN ERICA 0025
 RITO 8094 PRAIRIELANE 2060
 CRESCENT CREEK BLACKCAP 112A

SVF SIEBRINGS FOREVER RUSS NHF AMF
ATLASTA WENDY 42S 1341949
 MLA WENDY 1'94

GDAR SVF RUSS 184B
 GDAR SVF FOREVER LADY 214D
 G D A R WHAM 021 NHF AMF
 MLA WENDY 20'87

BW: 82 lbs. Adj. 205D: 583 lbs.
 EPDs: BW: +4.0 32% WW: +33 21% YW: +66 10% Milk: +17 11% TM: +34 YG: +33 10%

Exposed: March 30 to July 3, 2009 to Atlasta BB Traveler 6807-047T -1417947-.
 July 3 to August 25, 2009 to BB Alliance 40S -1362471-. (Due early Jan.)

Style, extra depth and capacity, good hindquarter describe two of my favorites. Their sire, Remington Right Time 124R stamps both his bulls and heifers with moderate birth weight and high end weaning weights. I'm really excited in what he's produced and these two lead the way. Their excellent young dams descend from proven 4th and 5th generation cow families. Top end genetics and carcass numbers, tons of performance are bred into these solid young females.

125A ATLASTA BB 143U

Female JBS 143U 1473831 February 03 2008

ATLASTA SPECIAL RUSS 21P
KBJ SPECIAL RUSS 214S 1336862
 CJCA ROSE 7N

SVF SIEBRINGS FOREVER RUSS NHF AMF
 ATLASTA ERICA 34H
 S A NEUTRON 377 NHF AMF
 KBJ ROSE 475K

BON VIEW NEW DESIGN 878 NHF AMF
BB BARBARAMERE NELL 24S 1362988
 SITZ BARBARAMERE NELL 3093

B/R NEW DESIGN 036 NHF AMF
 BON VIEW GAMMER 85
 LEACHMAN TWOPLY 0506
 SITZ BARBARAMERE NELL 2088

BW: 93 lbs. Adj. 205D: 651 lbs.
 EPDs: BW: +4.8 32% WW: +42 20% YW: +75 10% Milk: +20 9% TM: +41 YG: +33 10%

Exposed: March 30 to July 3, 2009 to Atlasta BB Traveler 6807 047T-1417947-.
 July 3 to August 25, 2009 to BB Alliance 40S -1362471-. (Due early Jan.)

125B ATLASTA WW 89U

Female JBS 89U 1476203 January 19 2008

ATLASTA SPECIAL RUSS 21P
KBJ SPECIAL RUSS 214S 1336862
 CJCA ROSE 7N

SVF SIEBRINGS FOREVER RUSS NHF AMF
 ATLASTA ERICA 34H
 S A NEUTRON 377 NHF AMF
 KBJ ROSE 475K

WHITESTONE WIDESPREAD MB NHF AMF
SCHOCHANEETQUA RACHEL 602S 1312837
 JESSI-D BRIAR ROSE MORRISON 2H

N BAR EMULATION EXT NHF AMF
 M B RACHEL 2173
 TM NEW POWER PLAY 5F
 ALBERN MISS MORRISON 251'94

BW: 73 lbs. Adj. 205D: 558 lbs.
 EPDs: BW: +3.2 30% WW: +39 18% YW: +71 9% Milk: +13 8% TM: +33 YG: +32 9%

Exposed: March 30 to July 3, 2009 to Atlasta BB Traveler 6807 047T -1417947-.
 July 3 to August 25, 2009 to BB Alliance 40S -1362471-. (Due mid Jan.)

Moderately framed, clean fronted with some extra depth and good hindquarters are all packaged into this pair. We bought their sire from Uncle Jim at KBJ to add some performance and calving ease and he sure did his job. Every sire and dam in these heifers immediate pedigree are proven top producers. Some impressive EPDs also! These two are the kind to start a herd with.

Seriously Black Select Females



Lot 126A - Atlasta Lady Pride 158U



Lot 127A - Atlasta Erica 177U

126A ATLASTA LADY PRIDE 158U

Female JBS 158U 1531163 February 11 2008

DFI 03G MAN 36M
ATLASTA 03G STOCKMAN 46S 1342019
 ATLASTA ELCON 67H

PEAK DOT FAME 414M
BB LADY PRIDE 22R 1297923
 S L S LADY PRIDE 2803

DMM DYNASTY 03G
 MVF TIBBIE 058K
 WINDOVER MATRIX 14F
 MLA ELCON 6'95

S A R FAME 2089
 DUCHESS OF PEAK DOT 642K
 SITZ TRAVELER 7641
 S L S LADY PRIDE 1611

BW: 88 lbs. Adj. 205D: 653 lbs.
 EPDs: BW: +1+3.3 5% WW: +1+38 5% YW: +1+63 5% Milk: +1+20 5% TM: +1+39 YG: +1+24 5%

Exposed: March 30 to July 3, 2009 to Atlasta BB Traveler 6807 047T - 1417947-..
 July 3 to August 25, 2009 to BB Alliance 40S -1362471-. (Due mid Jan.)

126B ATLASTA WINDIE ERICA 3U

Female JBS 3U 1532793 January 01 2008

G T MAXIMUM NHF AMF
ATLASTA PULLY 20P 1236611
 ATLASTA BOOBOO 2'96

HARMON MATRIX 4051
WINDOVER ERICA 14H 918478
 LAZY J ERICA 13E

SCOTCH CAP NHF AMF
 GT MISS TRAVELER 58
 WHS PLAYBOY 5B
 MLA ELCON 32'91

B J MAGNUM 9740
 HARMON BLACK LADY 4301
 DURNESS JACK 92A
 BLACKTOF ERICA 64B

BW: 94 lbs. Adj. 205D: 612 lbs.
 EPDs: BW: +1+2.7 5% WW: +1+36 5% YW: +1+63 5% Milk: +1+10 5% TM: +1+27 YG: +1+27 5%

Exposed: March 30 to July 3, 2009 to Remington Final Answer 209T - 1419050-..
 July 3 to August 25, 2009 to BB Alliance 40S -1362471-. (Due mid to late Jan.)

Two different pedigrees top and bottom in both these pedigrees, but one thing is the same, they both have very good consistent producers for mamas and both their dads have done a good job along with the sires dams. Some proven performance bulls and rock solid consistent cow families are behind these fancy females.

127A ATLASTA ERICA 177U

Female JBS 177U 1473672 February 20 2008

SVF SIEBRINGS FOREVER RUSS NHF AMF
ATLASTA FOREVER RUSS 37S 1341988
 ATLASTA ERICA 34H

ALSIKE ACRES EX NITRO BLAST 3F
ATLASTA ERICA 13H 918542
 MLA ERICA 32'89

GDAR SVF RUSS 184B
 GDAR SVF FOREVER LADY 214D
 MACC INDIAN NATION 66F
 MLA ELLEN ERICA 34'95

MOUNTAIN SIDE NITRO EXTRA 5D
 GEM OF GUMBO GULCH 101B
 LARKSPUR NEW YORK TIMES
 MLA ERICA 7'87

BW: 85 lbs. Adj. 205D: 717 lbs.
 EPDs: BW: +2.1 33% WW: +40 22% YW: +71 6% Milk: +17 11% TM: +37 YG: +30 6%

Exposed: March 30 to May 16, 2009 to HF Kodiak 57U -1447442-..
 May 16 to July 3, 2009 to Atlasta BB Traveler 6807 047T -1417947-..
 July 3 to August 25, 2009 to BB Alliance 40S -1362471-. (Due mid Jan.)

127B ATLASTA STOCK LADY 170U

Female JBS 170U 1473796 February 15 2008

SVF SIEBRINGS FOREVER RUSS NHF AMF
ATLASTA FOREVER RUSS 37S 1341988
 ATLASTA ERICA 34H

HF FORMATION 13K
ATLASTA STOCK LADY 46P 1236652
 ATLASTA STOCK LADY 38L

GDAR SVF RUSS 184B
 GDAR SVF FOREVER LADY 214D
 MACC INDIAN NATION 66F
 MLA ELLEN ERICA 34'95

CONNELLY KINCAID
 DURALTA 14C ECHO 32E
 TC STOCKMAN 365
 MLA MISS BRIDE 9'86

BW: 92 lbs. Adj. 205D: 657 lbs.
 EPDs: BW: +4.6 33% WW: +43 21% YW: +74 7% Milk: +21 10% TM: +43 YG: +31 7%

Exposed: March 30 to July 3, 2009 to Remington Final Answer 209T - 1419050-..
 July 3 to August 25, 2009 to BB Alliance 40S -1362471-. (Due mid Jan.)

Smooth front ended deep and long with good quarters describe another pair of heifers sired by Atlasta Forever Russ 37S, whom Dale Bushfield is a partner. His heifers are all attractive keepers and bulls are all at the front end in weaning weights. JBS 177U is a fourth generation cow family here and JBS 170U a fifth generation family at Atlasta. Every cow in both these pedigrees have been very good for us.

Seriously Black Select Females



Lot 128A - Atlasta Erelite 29U



Remittal Moonshine - Sire of Lots 129A, 129B & 130A

128A ATLASTA ERELITE 29U

Female JBS 29U 1532794 January 08 2008

G T MAXIMUM NHF AMF
ATLASTA PULLY 20P 1236611
ATLASTA BOOBOO 2'9E

SCOTCH CAP NHF AMF
GT MISS TRAVELER 58
WHS PLAYBOY 5B
MLA ELCON 32'91

HEATHAN'S BART 1B
ANB ERELITE 03E 830026
CHICO ERELITE 42T

V D A R NEW TREND 315 NHF AMF
TRAILVIEW COUNTESS 154'89
RIVERCREST REVOLUTION SSY 5N
CCC ERELITE JILT 27'78

BW: 78 lbs. Adj. 205D: 633 lbs.
EPDs: BW: +3.7 5% WW: +32 5% YW: +56 5% Milk: +7 5% TM: +22 YG: +24 5%

Exposed: March 30 to July 3, 2009 to Remington Final Answer 209T - 1419050-.
July 3 to August 25, 2009 to BB Alliance 40S -1362471-. (Due early Jan.)

129A ATLASTA EVERGREEN 109U

Female JBS 109U 1473782 January 24 2008

VERMILION DATELINE 7078 NHF AMF
REMITALL MOONSHINE 113M 1141755
LLB COUNTESS 635H

CONNEALY DATELINE
VERMILION BLACKBIRD 5044
WK RAINMAN 2051
PAT COUNTESS 635A

SITZ PCAR EMULATION EXT 8668
BB EISA EVERGREEN 18P 1246433
SITZ EISA EVERGREEN 2313

N BAR EMULATION EXT NHF AMF
SITZ ELSLOW 546
G D A R TRAVELER 71 NHF AMF
SITZ EISA EVERGREEN 606

BW: 90 lbs. Adj. 205D: 616 lbs.
EPDs: BW: +4.1 35% WW: +41 24% YW: +74 15% Milk: +16 13% TM: +37 YG: +32 15%

Exposed: March 30 to July 3, 2009 to Remington Final Answer 209T - 1419050-.
July 3 to August 25, 2009 to BB Alliance 40S -1362471-. (Due late Jan.)

128B ATLASTA BLACKCAP DAMON 128U

Female JBS 128U 1473720 January 27 2008

TC FREEDOM 104 AMF
HF COMMANDER 60P 1215068
DURALTA 14C ECHO 32E

CONNEALY FOREFRONT NHF AMF
T C RUBY 9095
HF WALK-ON 14C
STONEHAVEN MISS PONDEROSA 9U

DMM STOCKMAN 106J
ATLASTA BLACKCAP DAMON 11M 1131053
MLA BLACKCAP 48'93

TC STOCKMAN 365
DMM MISS ESSENCE 22B
GET-A-LONG ALAMO 132
MLA BLACKCAP 6'90

BW: 96 lbs. Adj. 205D: 671 lbs.
EPDs: BW: +4.7 33% WW: +39 22% YW: +69 8% Milk: +18 12% TM: +38 YG: +31 8%

Exposed: March 30 to July 3, 2009 to Remington Final Answer 209T - 1419050-.
July 3 to August 25, 2009 to BB Alliance 40S -1362471-. (Due early Jan.)

129B ATLASTA BARBARAMERE NELL 146U

Female JBS 146U 1473791 February 06 2008

VERMILION DATELINE 7078 NHF AMF
REMITALL MOONSHINE 113M 1141755
LLB COUNTESS 635H

CONNEALY DATELINE
VERMILION BLACKBIRD 5044
WK RAINMAN 2051
PAT COUNTESS 635A

SITZ ALLIANCE 7002
BB BARBARAMERE NELL 30P 1240732
SITZ BARBARAMERE NELL 3123

SITZ ALLIANCE 6595 NHF AMF
SITZ EVERELDA ENTENSE 2466
SITZ RITO 7491
SITZ BARBARAMERE NELL 438

BW: 92 lbs. Adj. 205D: 692 lbs.
EPDs: BW: +4.3 35% WW: +44 24% YW: +77 14% Milk: +21 13% TM: +43 YG: +33 14%

Exposed: March 30 to July 3, 2009 to Remington Final Answer 209T - 1419050-.
July 3 to August 25, 2009 to BB Alliance 40S -1362471-. (Due early Jan.)

Two bigger framed, powerful heifers sired by HF Commander 60P, a flush brother to HF Free Wheeler. Anyone who has seen Hamilton Farms or LLB's heifers from this bull will tell you they make awesome cows and these two are no different. Lots of hair, good feet and udders with some added length and volume describe the two ladies.

Both these heifers are sired by Remittal Moonshine a long sided deep ribbed son of Vermilion Dateline 7078. Their dams are moderate framed deep volumed cows with good feet and udders. These two bred females will carry the same qualities and make darn good brood cows.

Seriously Black Select Females



Lot 130A - Atlasta Nel 161U



Atlasta Pully 20P - Sire of Lots 130B & 126B

130A ATLASTA NEL 161U

Female JBS 161U 1473771 February 12 2008

VERMILION DATELINE 7078 NHF AMF
REMITALL MOONSHINE 113M 1141755
LLB COUNTESS 635H

CONNELLY DATELINE
VERMILION BLACKBIRD 5044
WK RAINMAN 2051
PAT COUNTESS 635A

SITZ TRAVELER 5556
BB BARBARAMERE NEL 5P 1240742
SITZ BARBARAMERE NEL 2812

TRAVELER 124 G D A R
SITZ EVERELDA ENTENSE 1137
HYLINE RITO 9J9 278 NHF AMF
SITZ BARBARAMERE NEL 8089

BW: 88 lbs. Adj. 205D: 618 lbs.
EPDs: BW: +4.3 34% WW: +41 24% YW: +73 14% Milk: +18 14% TM: +39 YG: +32 14%

Exposed: March 30 to July 3, 2009 to Remington Final Answer 209T - 1419050-.
July 3 to August 25, 2009 to BB Alliance 40S -1362471-. (Due late Jan.)

130B ATLASTA LADY WREN 43U

Female JBS 43U 1532795 January 11 2008

G T MAXIMUM NHF AMF
ATLASTA PULLY 20P 1236611
ATLASTA BOOBOO 2'96

SCOTCH CAP NHF AMF
GT MISS TRAVELER 58
WHS PLAYBOY 5B
MLA ELCON 32'91

CENTURY TOUCHSTONE 131
LINDON LADY WREN 11G 899556
BJ LADY WREN 4'91

GINGER HILL DUSTER 89 NHF AMF
WAR SARA 7142 0003
CUDLOBE BLACK STAR 92X
BJ LADY WREN 83'85

BW: 90 lbs. Adj. 205D: 626 lbs.
EPDs: BW: +3.1 5% WW: +40 5% YW: +69 5% Milk: +13 5% TM: +32 YG: +30 5%

Exposed: March 30 to July 3, 2009 to Remington Final Answer 209T - 1419050-.
July 3 to August 25, 2009 to BB Alliance 40S -1362471-. (Due early Jan.)

JBS 161U, sired by Remital Moonshine 113M, a power performance sire whose progeny will carry genetics to improve gain ability in both heifers and bulls. Her dam has tons of capacity and is moderate framed. JBS 43U is a larger framed heifer from a consistent 12 year old producer. Her sire is a long, powerful son of breed giant, G T Maximum.

Terms & Conditions

CATTLE INSPECTION: All carry permanent identity tags, corresponding to Sale Lot Numbers. All shall be available for inspection prior to sale.

ALL CATTLE ARE SOLD: Subject to such tests as required for export under regulations of the Health of Animals Branch, Department of Agriculture for Canada - those corresponding to Bureau of Animal Industry requirements.

BREEDING GUARANTEE: All cattle are sound and sold with a responsible breeder guarantee of satisfaction. In the event of any unlikely dispute, the regular terms and conditions, standard with the Canadian Aberdeen Angus Association shall apply.

HOLDING AND SHIPMENTS: Approximately one week is required for export transfers and other documents to be processed. Export animals will be held at no charge and under excellent care. Joint export shipping arrangements to attain minimum shipping cost will gladly be made by the sale management if instructions to that effect are provided to clerk of the sale when settlement is made.

MAIL BIDS: May be entrusted in complete confidence to any of the Sale Staff listed or to Douglas J. Henderson & Associates Ltd.

INSURANCE: Ownership risk to purchaser commences when the Auctioneer's hammer falls. Livestock coverage will be available at the clerk's desk from the appointed representatives on sale day, also from the sale management at any time.

TERMS OF SALE: Are cash or cheque at par, payable to Clerks of the Sale on Sale Day. U.S. Funds will be accepted at the current rate of exchange. No release will be given until satisfactory settlement has been made. We reserve the right to withhold animals from export shipment for whom payments have not been received prior to departure times.

ALL PERSONS who attend the Sale do so at their own risk, and the Owners, Sale Management and Sale Staff assume no liability, legal or otherwise, for property loss or for any accidents that may occur.

Atlasta Reference Sires



Atlasta BB Traveler 6807 047T



HF Kodiak 57U

E **ATLASTA BB TRAVELER 6807 047T**

Male JBS 047T 1417947 (ET) February 19 2007

Q A S TRAVELER 23-4 NHF AMF
D H D TRAVELER 6807 NHF AMF 773800
BEMINDFUL MAID D H D 0807

BAND 234 OF IDEAL 3163
Q A S BLACKBIRD EVE 601 1
PBC 707 1M F0203
BEMINDFUL MAID OF R R 1079

LEACHMAN PARAGON
LEACHMAN WENDY 9031 1363211
LEACHMAN WENDY 1077

BROST POWER DRIVE
LEACHMAN QUEEN 0589
LEACHMAN FULLBACK
WENDY N BAR 0375

BW: 78 lbs. Adj. 205D: 785 lbs. Adj. 365D: lbs.
EPDs: N/A

F **REMINGTON FINAL ANSWER 209T**

Male RCC 209T 1419050 (ET) May 07 2007

SITZ TRAVELER 8180 NHF AMF
S A V FINAL ANSWER 0035 NHF AMF 1061938
S A V EMULOUS 8145

G D A R TRAVELER 71 NHF AMF
SITZ EVERELDA ENTENSE 1137
BON VIEW BANDO 598 AMF
S A V SKY EMULOUS 2124

N BAR EMULATION EXT NHF AMF
BOTANY ANGUS ELLEN 14G 895906
BOTANY ANGUS ELLEN 28B

EMULATION N BAR 5522
N BAR PRIMROSE 2424
G T MAXIMUM NHF AMF
BOTANY ANGUS ELLEN 18W

BW: 73 lbs. Adj. 205D: 514 lbs. Adj. 365D: 1436 lbs.
EPDs: BW: +2.1 5% WW: +48 5% YW: +86 5%
Milk: +18 5% TM: +42 YG: +38 5% SC: +1+0.55 5%

G **HF KODIAK 57U**

Male HAMI 57U 1447442 January 08 2008

SANDY BAR ADVANTAGE 43M
HF KODIAK 5R 1274305
WILBAR RUBY 955N

TC ADVANTAGE NHF AMF
SANDY BAR JEMINA 44K
VERMILION YELLOWSTONE NHF AMF
WILBAR RUBY 161J

HF PROGRESS 20K
HF ROSEBUD 94P 1214861
HF ROSEBUD 198M

NORTHERN IMPROVEMENT 4480 GF NHF AMF
DURALTA 14C ECHO 32E
RIVERBEND POWERLINE 0050
HF ROSEBUD 23G

BW: 78 lbs. Adj. 205D: 719 lbs. Adj. 365D: 1336 lbs.
EPDs: BW: -0.1 35% WW: +46 25% YW: +84 24%
Milk: +23 9% TM: +46 YG: +37 24% SC: +0.52 33%

H **BB ALLIANCE 40S**

Male AB 40S 1362471 February 18 2006

SITZ TRAVELER 8180 NHF AMF
SITZ ALLIANCE 6595 NHF AMF 1036949
SITZ BARBARAMERE JET 2698

G D A R TRAVELER 71 NHF AMF
SITZ EVERELDA ENTENSE 1137
3 BAR SPIKE 1766
SITZ BARBARAMERE JET 155

STEVENSON FORTUNE 425C AMF
WHS ISABELLA 3J 993040
WHS SUNSHINE 58G

GARDENS FORTUNE 9213 S3
J R S ENCHANTRESS 235Z
GLESBAR SAMSUN 7C
WINTERING HILLS PRIDE 37D

BW: 88 lbs. Adj. 205D: 646 lbs. Adj. 365D: lbs.
EPDs: BW: +2.3 33% WW: +39 24% YW: +71 18%
Milk: +17 20% TM: +37 YG: +32 18%



Remington Final Answer 209T



BB Alliance 40S

Lot 131
Mystery Lot



Pick of the
2010
Heifer Calves

Every one born available
Selection must be made by
August 1



*Remington
Right Time 124R*

*A sincere Thank You
for your interest*

*Safe travels &
Best of the Holidays
- Brian & Judy*



DjH Douglas J. Henderson
& Associates Ltd.

P.O. Box 5900, Lacombe, Alberta T4L 1X4



RETURN POSTAGE GUARANTEED
PORT DE RETOUR GARANTI

Atlasta Angus

4th Annual Bull Sale



Grant Rolston



&
**Seriously
Black
Select
Female Sale**

**Saturday
December 12, 2009**

At the Farm, Sylvan Lake, Alberta